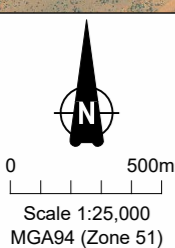
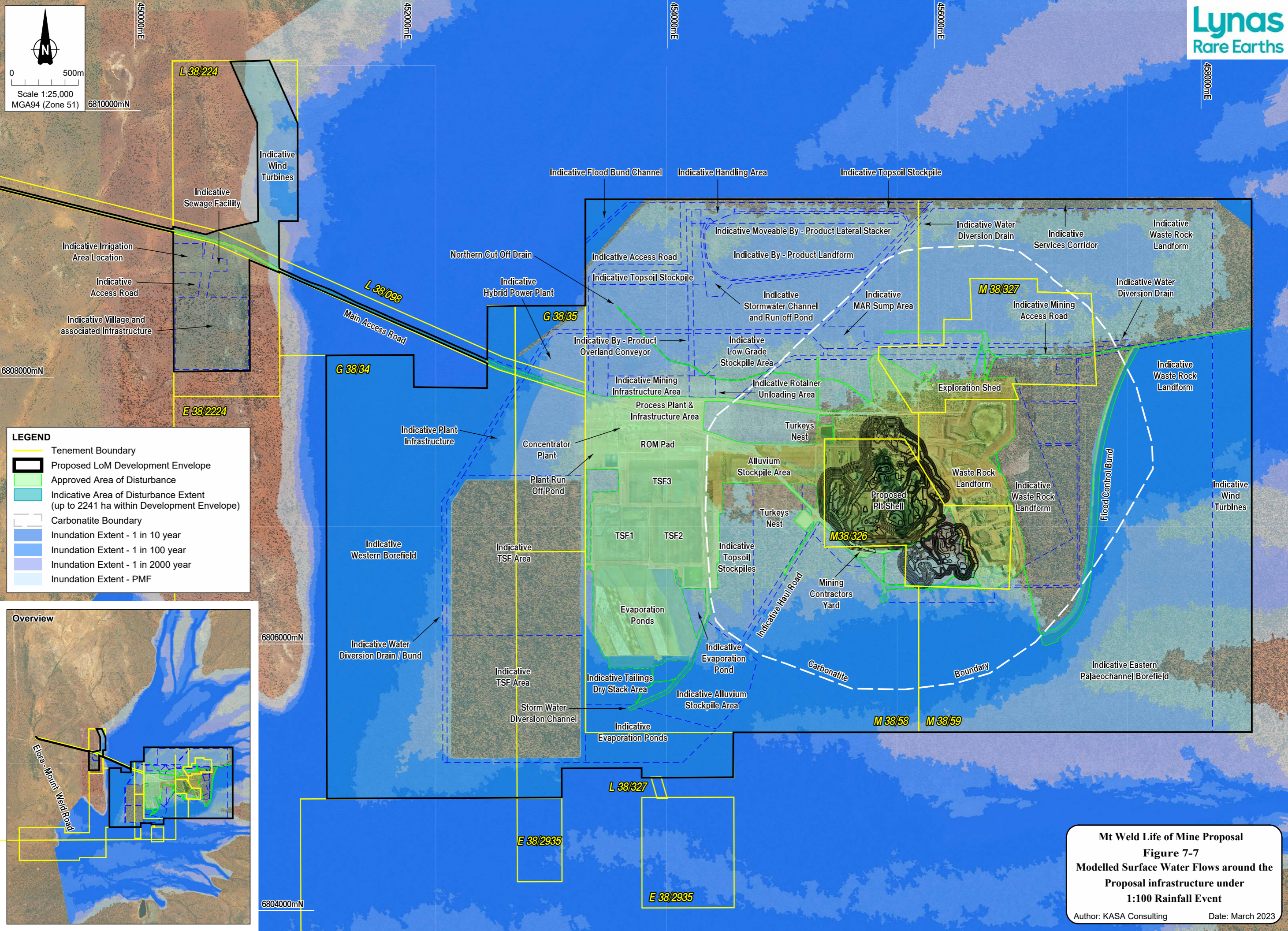
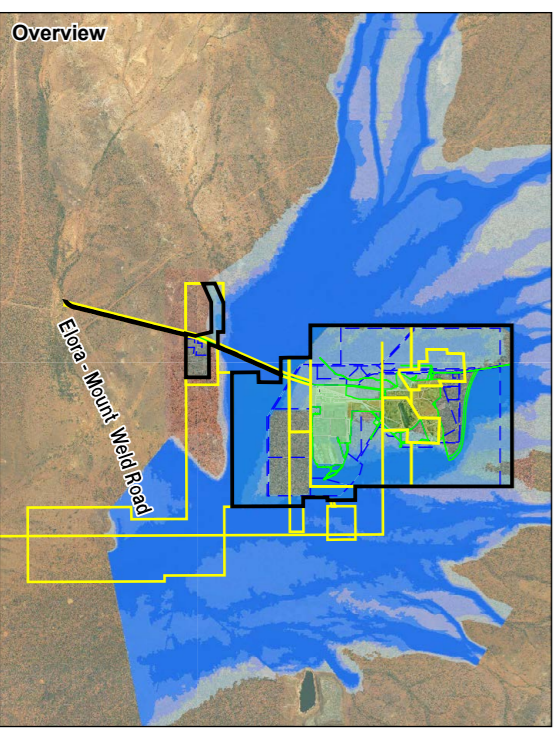


Author: KASA Consulting ~ Drawn: CAD Resources ~ Tel: 9246 3242 ~ Fax: 9246 3202 ~ www.cadresources.com.au ~ A3 ~ CAD Reference: g1942_MP23_F01_18 ~ Date: March 2023 ~ Rev A



LEGEND

- Tenement Boundary
- Proposed LoM Development Envelope
- Approved Area of Disturbance
- Indicative Area of Disturbance Extent (up to 2241 ha within Development Envelope)
- Carbonatite Boundary
- Inundation Extent - 1 in 10 year
- Inundation Extent - 1 in 100 year
- Inundation Extent - 1 in 2000 year
- Inundation Extent - PMF



Mt Weld Life of Mine Proposal
Figure 7-7
Modelled Surface Water Flows around the
Proposal infrastructure under
1:100 Rainfall Event

Author: KASA Consulting Date: March 2023