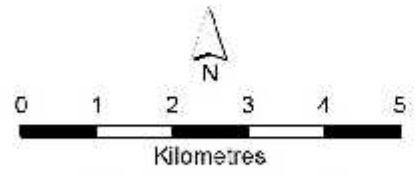
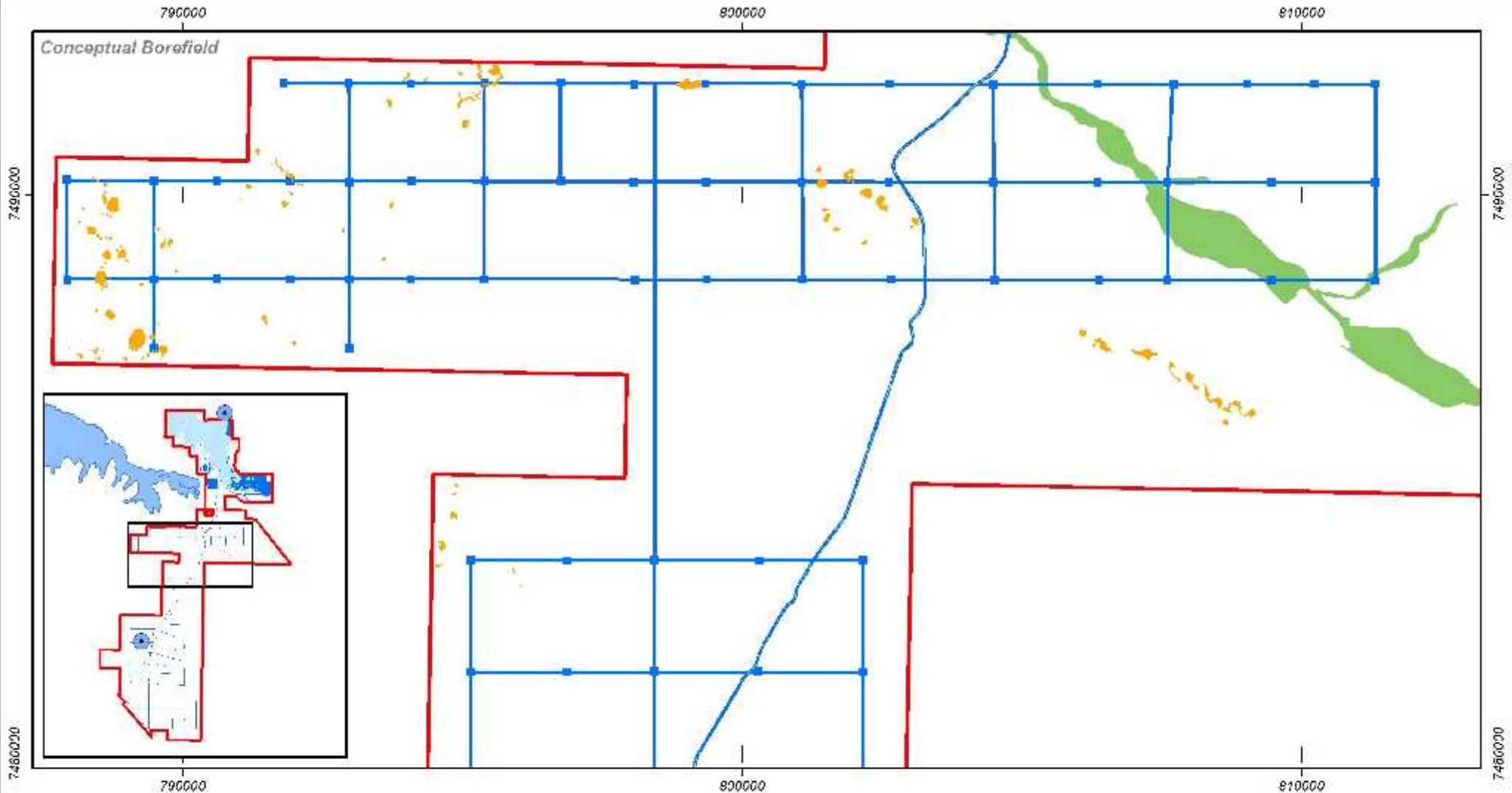


**Migratory Bird Habitat**

Revised Development Envelope	Fortescue Marsh
<b>Migratory Bird Habitat Types</b>	
Claypans	Semi-permanent waterbodies
Major Drainage Line	<b>S38 Clearing Area Approvals</b>
	Existing
	Proposed

0 1 2 3 4 5  
Kilometres  
Datum: GDM, 91 MGA Zone 50



Datum GDA 94 MGA Zone 50

**Migratory Bird Habitat**

- Revised development envelope
- Fortescue Marsh
- Claypans
- Major Drainage Line
- Semi-permanent waterbodies

**S38 Clearing Area Approvals**

- Existing
- Proposed

2/07/2020

sophia.delic@oil

