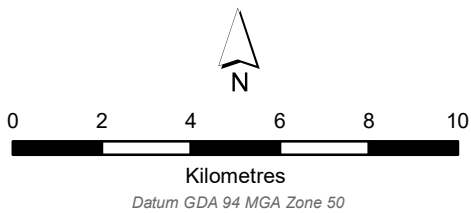
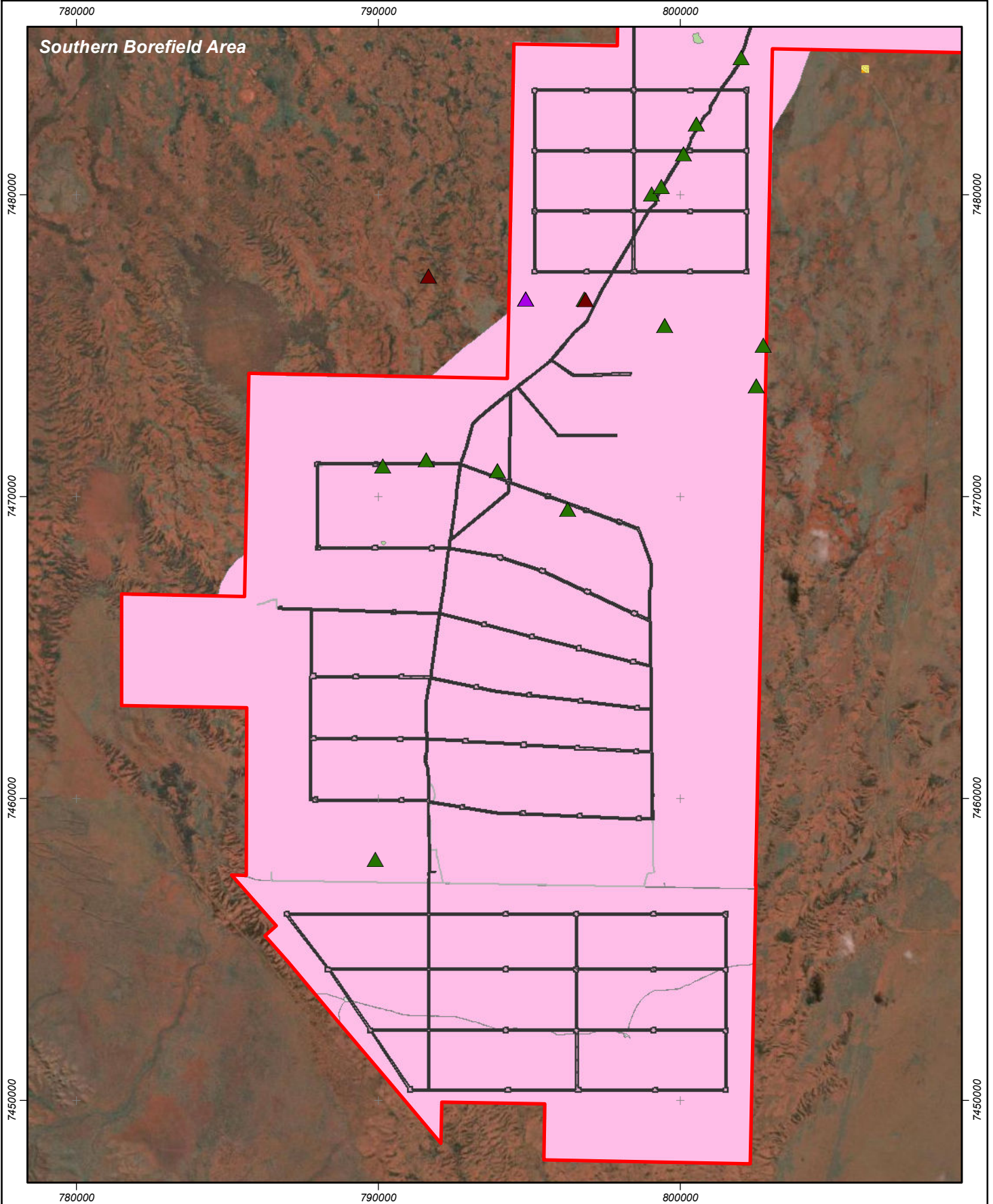


Datum GDA 94 MGA Zone 50

- Development Envelope
- S38 Clearing Area Approvals**
- Existing
- Proposed

- Indirect Impact Risk**
- Medium
 - Low

Southern Borefield Area



- Development Envelope
- S38 Clearing Area Approvals**
- Existing
- Proposed

- Indirect Impact Risk**
- Medium
 - Low

Legend

SRE Species Locations

Diplopoda

- ◉ Antichiropus sloanae
- Antichiropus sp. indet.

Gastropoda

- Bothriembryon sp. indet.

Mygalomorphae

- ▲ Aname sp. indet.
- ▲ Barychelidae sp. indet.
- ▲ Conothele `MYG537`
- ▲ Conothele `MYG538`
- ▲ Idiommata `MYG128`
- ▲ Idiosoma `MYG085`
- ▲ Idiosoma `MYG086`
- ▲ Idiosoma sp. indet.
- ▲ Kwonkan `MYG033`
- ▲ Missulena `MYG252`
- ▲ Missulena sp. indet.

Pseudoscorpiones

- ▲ Austrochthonius sp. indet.
- ▲ Beierolpium `sp. 8/2`
- ▲ Indolpium `sp. 1`
- ▲ Indolpium `sp. 2`
- ▲ Olpiidae sp. indet.

Scorpiones

- Lychas `sp. 3`
- Lychas sp. indet.
- Urodacus `Roy Hill keeled`
- Urodacus `Roy Hill smooth`
- Urodacus `sp. 9`
- Urodacus `sp. Pilbara 4`
- Urodacus `sp. nov.`
- Urodacus sp. indet.

Fauna Habitat Mapping (Extrapolated)

- Cleared Area
- Drainage Area/Floodplain
- Hillcrest/Hillslope
- Major Drainage Line
- Medium Drainage Line
- Minor Drainage Line
- Sandy/Stony Plains