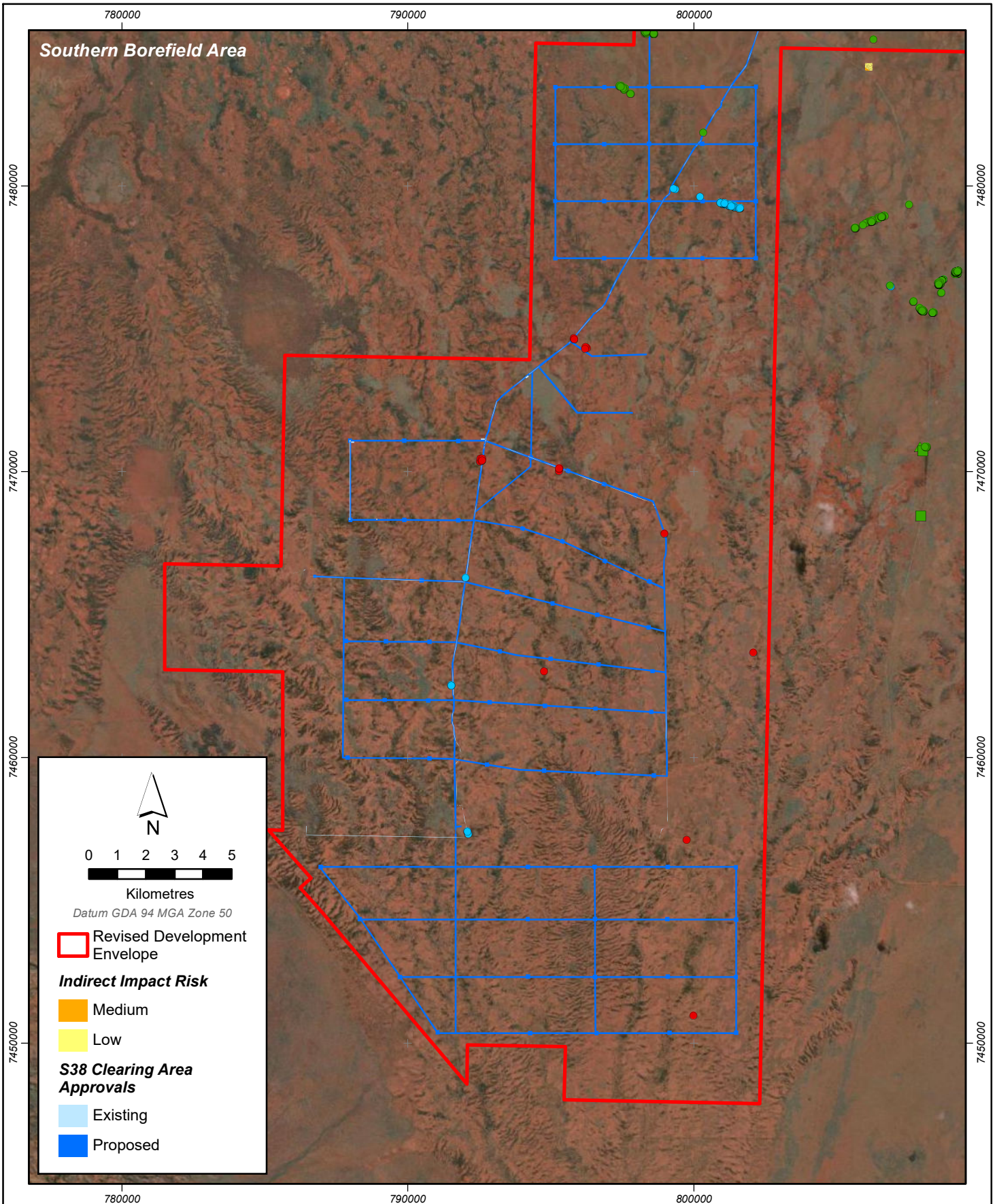


<b>Roy Hill Priority Flora</b>		<b>DPaW Priority Flora</b>	
● Eremophila pilosa	● Stemodia sp. Battle Hill (A.L. Payne 1006)	■ Eremophila pilosa	▲ Eremophila youngii subsp. lepidota
● Eremophila youngii subsp. lepidota	● Themedia sp. Hamersley Station (M.E. Trudgen 11431)	■ Eremophila spongiocarpa	▲ Goodenia nuda
● Goodenia nuda	● Triodia veniciae	■ Goodenia nuda	▲ Rhagodia sp. Hamersley (M. Trudgen 17794)
● Rhagodia sp. Hamersley (M. Trudgen 17794)		<b>WA Herbarium</b>	
		▲ Eremophila pilosa	▲ Samolus sp. Fortescue Marsh (A. Markey & R. Coppen FM 9702)
		▲ Eremophila spongiocarpa	▲ Stemodia sp. Battle Hill (A.L. Payne 1006)



**Southern Borefield Area**

0 1 2 3 4 5  
Kilometres

Datum GDA 94 MGA Zone 50

**Revised Development Envelope**

**Indirect Impact Risk**

Medium  
Low

**S38 Clearing Area Approvals**

Existing  
Proposed

Roy Hill Priority Flora		DPaW Priority Flora		WA Herbarium	
● Eremophila pilosa	● Stemodia sp. Battle Hill (A.L. Payne 1006)	■ Eremophila pilosa	▲ Eremophila youngii subsp. lepidota	▲ Eremophila pilosa	▲ Goodenia nuda
● Eremophila youngii subsp. lepidota	● Themedia sp. Hamersley Station (M.E. Trudgen 11431)	■ Eremophila spongiocarpa	▲ Rhagodia sp. Hamersley (M. Trudgen 17794)	▲ Eremophila spongiocarpa	▲ Rhagodia sp. Hamersley (M. Trudgen 17794)
● Goodenia nuda	● Triodia veniciae	■ Goodenia nuda	▲ Samolus sp. Fortescue Marsh (A. Markey & R. Coppen FM 9702)		▲ Samolus sp. Fortescue Marsh (A. Markey & R. Coppen FM 9702)
● Rhagodia sp. Hamersley (M. Trudgen 17794)			▲ Stemodia sp. Battle Hill (A.L. Payne 1006)		▲ Stemodia sp. Battle Hill (A.L. Payne 1006)