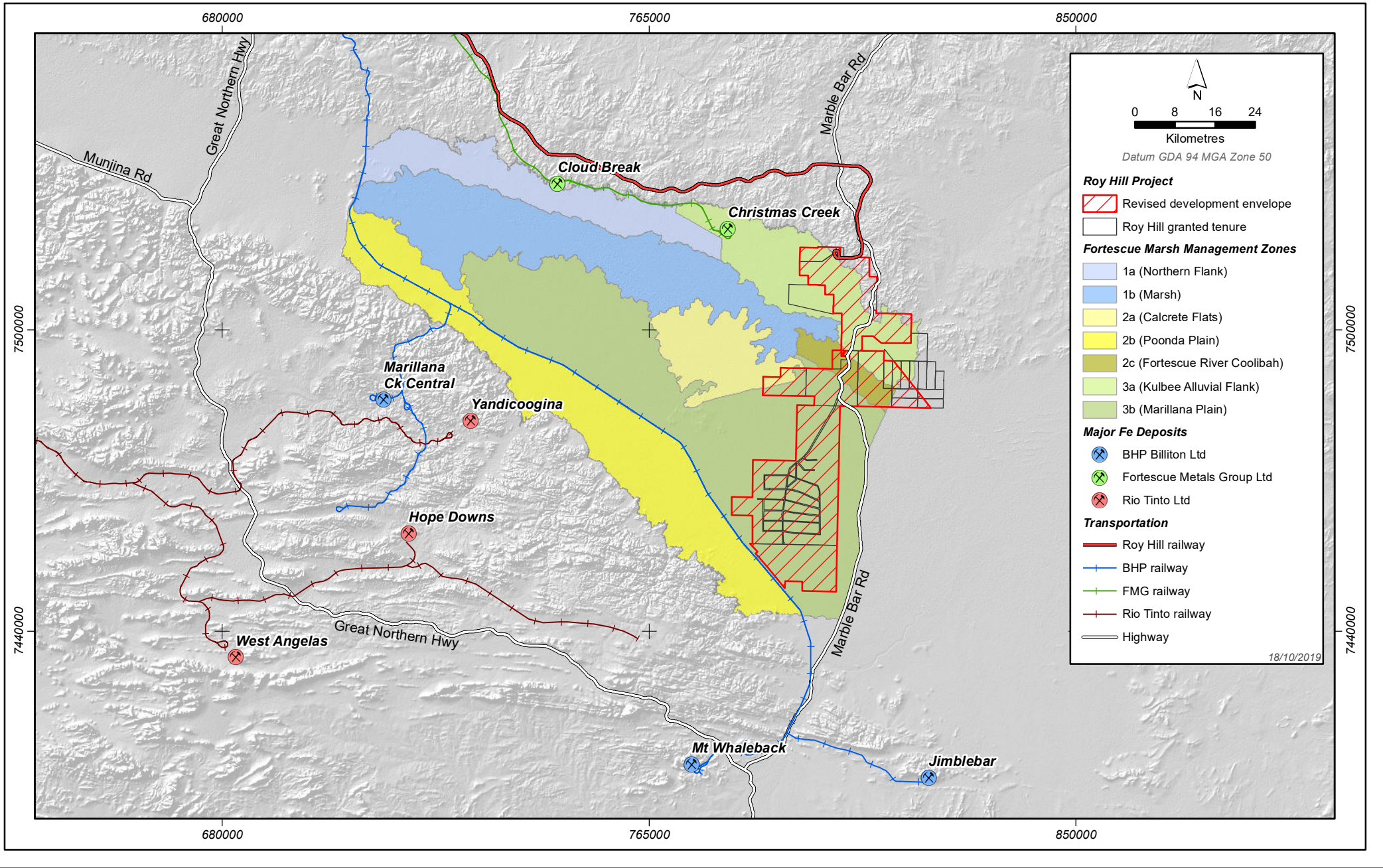



# ROY HILL PROJECT

## Proximity of Revised Development Envelope to Fortescue Marsh Management Area zones





0 8 16 24  
Kilometres

Datum GDA 94 MGA Zone 50

**Roy Hill Project**

- Revised development envelope
- Roy Hill granted tenure

**Fortescue Marsh Management Zones**

- 1a (Northern Flank)
- 1b (Marsh)
- 2a (Calcrete Flats)
- 2b (Poonda Plain)
- 2c (Fortescue River Coolibah)
- 3a (Kulbee Alluvial Flank)
- 3b (Marillana Plain)

**Major Fe Deposits**

- + BHP Billiton Ltd
- + Fortescue Metals Group Ltd
- + Rio Tinto Ltd

**Transportation**

- Roy Hill railway
- BHP railway
- FMG railway
- Rio Tinto railway
- Highway

18/10/2019