

Roy Hill Mine Area

Revised Development Envelope

S38 Clearing Area Approvals

Existing

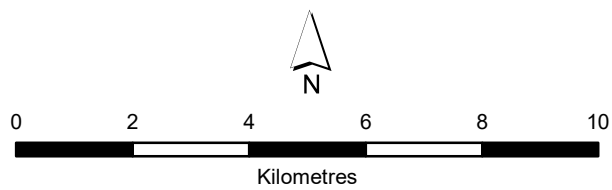
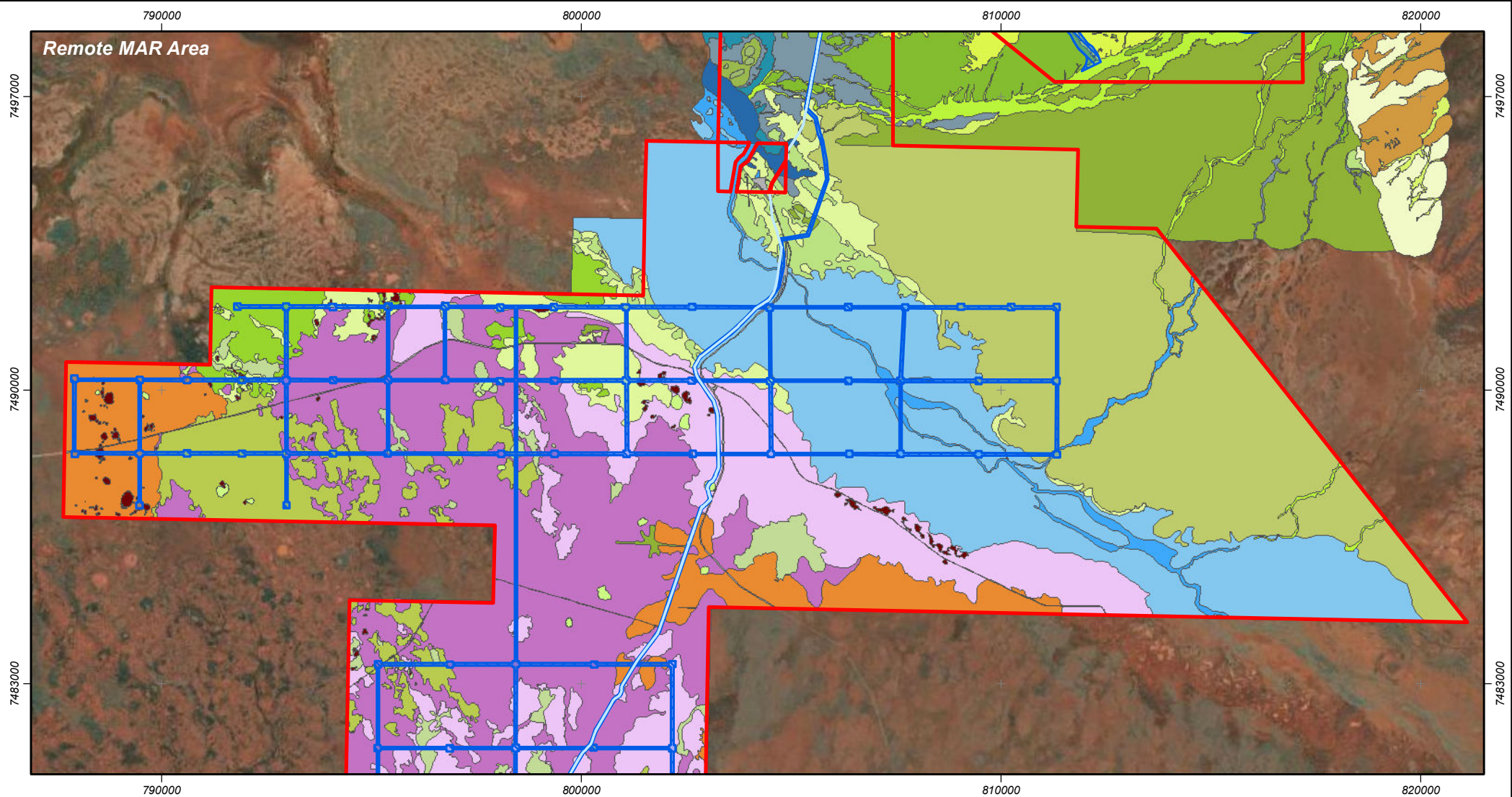
Proposed

0 2 4 6 8 10

Kilometres

Datum GDA 94 MGA Zone 50

Remote MAR Area



Datum GDA 94 MGA Zone 50

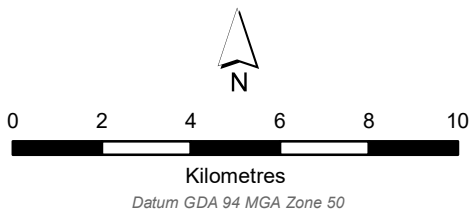
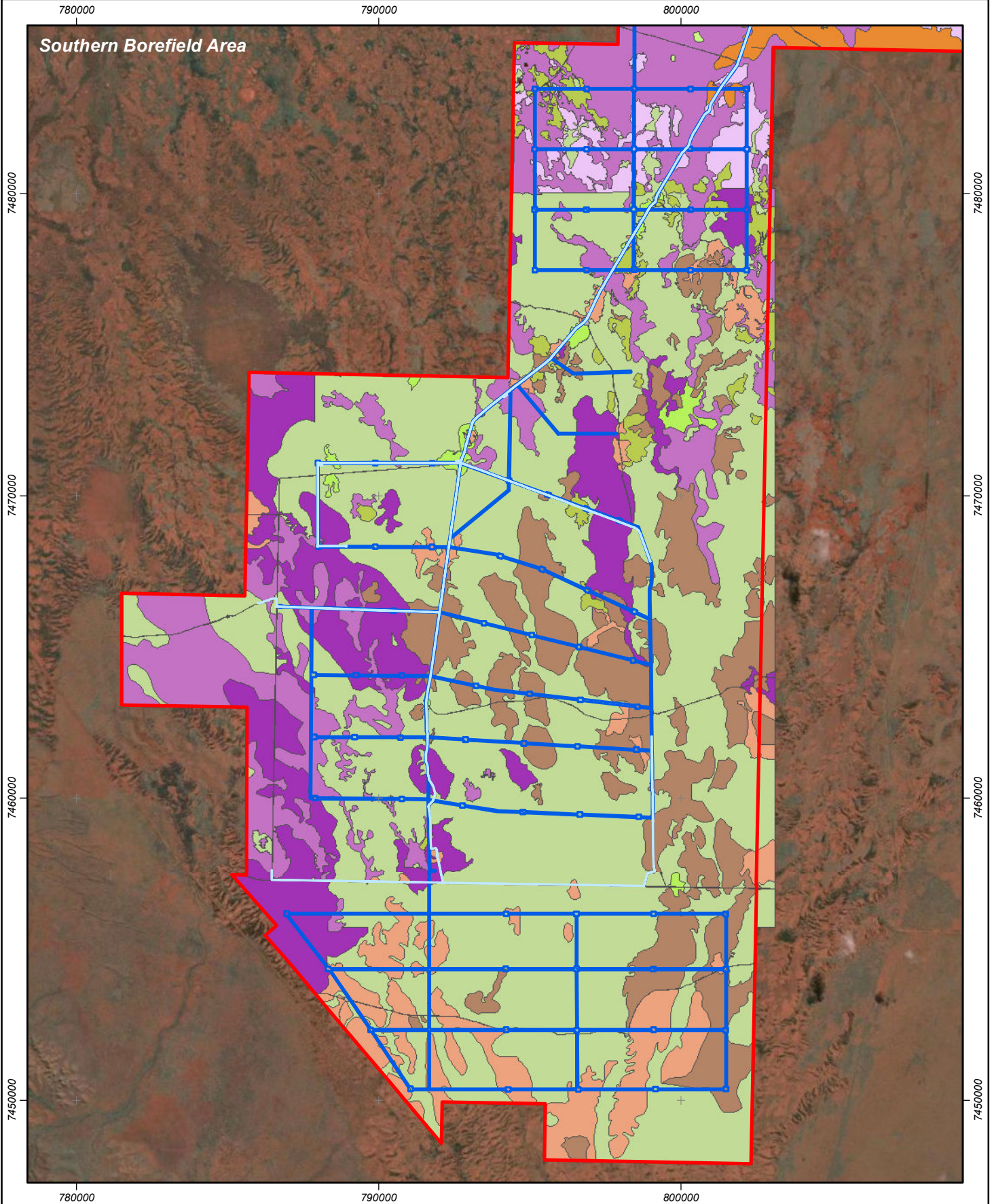
 Revised Development Envelope




S38 Clearing Area Approvals

 Existing

 Proposed

Southern Borefield Area



-  Revised Development Envelope
- S38 Clearing Area Approvals**
-  Existing
-  Proposed

	8 - Acacia (Mulga) open woodland Eucalyptus victrix scattered mid trees over Acacia aneura and allied genera/A. coriacea subsp. pendens/Atalaya hemiglauca low woodland over open shrubs over *Cenchrus ciliaris tussock grassland		23 - Acacia (Mulga) shrubland Eucalyptus victrix and occasionally Acacia aptaneura low sparse woodland over mid to tall shrubland dominated by Acacia (Acacia ancistrocarpa, Acacia tetragonophylla and Acacia sclerosperma subsp. sclerosperma) and Eremophila (Eremophila longifolia) species over Eulalia aurea, Chrysopogon fallax and Eriachne spp. mid to low open tussock grassland		19 - Mixed tussock grassland Closed tussock grassland of Eragrostis xerophila and Aristida latifolia with an open low shrubland of Senna symonii and Senna artemisioides subsp. Helmsii
	11 - Acacia (Mulga) open woodland Open woodland of Acacia pruinocarpa, A. aneura and allied genera over dense midstratum of Petalostylis labicheoides over sparse low shrubs over sparse tussock grasses and Triodia epacatia		28 - Acacia (Mulga) shrubland Isolated Eucalyptus victrix, Corymbia hamersleyana and C. aspera trees over open tall Acacia shrubland (A. aptaneura, A. macraneura, A. tetragonophylla, A. ancistrocarpa and/or A. sclerosperma subsp. sclerosperma) over isolated hummock grasses of Triodia angusta over open tussock grassland and sparse herbland		33 - Eucalypt open woodland Eucalyptus victrix and occasional patches of Acacia aptaneura low isolated trees over Acacia sclerosperma subsp. sclerosperma, *Vachellia farnesiana and Acacia tetragonophylla mid to tall isolated shrubs over disturbed understorey dominated by *Malvastrum
	12 - Acacia (Mulga) open woodland Acacia pruinocarpa, A. aneura and allied genera open woodland over open mixed shrubland over open grasses		1 - Triodia hummock grassland Isolated to open low trees and shrubs over Triodia brizoides hummock grasslands on slopes and crests		37 - Eucalypt open woodland Eucalyptus camaldulensis subsp. obtusa and/or E. victrix/Corymbia hamersleyana open low forest to woodland over Atalaya hemiglauca/Acacia pyrifolia tall open shrubland over low open shrubs over *Cenchrus ciliaris tussock grassland
	32 - Acacia (Mulga) open woodland Open forest to woodland of Eucalyptus victrix and Acacia aptaneura over mid to tall isolated shrubs of A. tetragonophylla, A. sclerosperma subsp. sclerosperma and Eremophila youngii subsp. lepidota over isolated mid hummock grasses of Triodia angusta over sparse mixed tussock grasses		2 - Triodia hummock grassland Isolated to open low trees and shrubs over Triodia brizoides and T. angusta hummock grasslands on slopes and plains		40 - Eucalypt open woodland Eucalyptus victrix open forest to woodland over Acacia tetragonophylla, A. sclerosperma subsp. sclerosperma and *Vachellia farnesiana mid open shrubland over sparse mixed tussock grasses and herbs
	35 - Acacia (Mulga) open woodland Acacia aneura and allied genera, A. rhodophloia open forest and woodland over sparse low shrubs and closed tussock grassland and herbland ± Triodia longiceps isolated clumps of hummock grassland		3 - Triodia hummock grassland Isolated low trees over sparse to open mid to low shrubland over Triodia scintillans hummock grasslands		10 - Eucalypt open woodland Eucalyptus victrix isolated mid trees to mid open woodland over Acacia synchronicia mid sparse shrubland over mixed low shrubs over open to closed mixed tussock grasses
	36 - Acacia (Mulga) open woodland Acacia aneura and allied genera tall open shrubland over A. tetragonophylla and Senna artemisioides subsp. helmsii sparse to open shrubs over Aristida contorta open grassland		4 - Triodia hummock grassland Isolated low trees over sparse to open mid to low shrubland over Triodia epacatia hummock grasslands		31 - Eucalypt sparse woodland Eucalyptus camaldulensis subsp. obtusa mid-low isolated trees with Eucalyptus victrix and Corymbia hamersleyana, Atalaya hemiglauca and Acacia coriacea subsp. pendens over disturbed hummock grassland with Triodia wiseana and T. sp. Warrawagine (A.L. Payne)
	39 - Acacia (Mulga) open woodland Groves of Acacia aneura and allied genera, A. rhodophloia woodland over Eremophila forrestii subsp. forrestii, Senna artemisioides subsp. helmsii and Eremophila latrobei subsp. filiformis mid sparse shrubland over open to sparse grasses		5 - Triodia hummock grassland Isolated low trees over sparse to open mid to low shrubland over Triodia wiseana hummock grasslands		20 - Mosaic of Acacia (Mulga) woodland with miscellaneous shrublands Mosaic of low woodland of Acacia aptaneura and A. macraneura with a mixed tussock grassland (Aristida latifolia, A. contorta and Enneapogon caeruleus) and an open low shrubland of Eremophila forrestii subsp. forrestii, Dodonaea petiolaris and/or Ptilot
	9 - Acacia shrubland Acacia spp. and Grevillea wickhamii subsp. hispidula tall shrubland over low shrubland over mixed tussock grassland		6 - Triodia hummock grassland Isolated low trees over sparse to open mid to low shrubland over Triodia scintillans hummock grasslands (±T. brizoides and T. angusta in minor flowlines)		25 - Mosaic of Acacia woodland with tussock and hummock grassland Mosaic of low open woodland with Acacia aptaneura, A. tetragonophylla, (+/- A. incurvaneura, A. macraneura, A. paraneura) over open mid to low shrubland of Eremophila forrestii subsp. forrestii or Eremophila cuneifolia (+/- Senna artemisioides subsp. oli
	14 - Acacia shrubland Acacia rhodophloia shrubland over sparse mixed shrubs and isolated herbs, and grasses		7 - Triodia hummock grassland Isolated low trees over sparse to open mid to low shrubland over Triodia wiseana hummock grasslands		26 - Mosaic of Acacia open woodland with hummock grassland Mosaic of open low woodland of Acacia aptaneura +/- A. macraneura, A. pruinocarpa, Eucalyptus gamophylla over sparse mixed tussock grassland of Aristida latifolia, A. contorta and Enneapogon caeruleus, open low shrubland of Eremophila forrestii subsp.
	13 - Acacia (Mulga) shrubland Acacia aneura and allied genera isolated clumps of tall shrubs shrubs over Ptilotus schwartzii open low shrubs		24 - Triodia hummock grassland Triodia angusta and/or T. pungens and/or T. schinzii mid open hummock grassland with isolated mid to tall shrubs dominated by Stylobasium spathulatum, Acacia sclerosperma subsp. sclerosperma and A. synchronicia		CL – Cleared Gazetted public roads, bore areas, etc.
	17 - Acacia (Mulga) shrubland Open mixed Acacia tall shrubland (commonly Acacia aptaneura, A. tetragonophylla, A. synchronicia) with an open low shrubland of Ptilotus obovatus var. obovatus, Sclerolaena cornishiana, Eremophila lanceolata over a sparse tussock grassland of Aristida latifolia, A. contorta and Eragrostis xerophila		38 - Triodia hummock grassland Isolated low trees and isolated to sparse shrubs over Triodia wiseana and T. scintillans hummock grasslands on colluvial deposits		
	21 - Open claypan Bare, open claypans, with occasional tussock grasses and shrubs, dominated by Eragrostis australasica, Diplachne fusca subsp. fusca and Sesbania cannabina		15 - Aristida tussock open grassland Open tussock grassland of Aristida contorta and A. latifolia with a sparse mid shrubland of Senna glaucifolia, S. artemisioides subsp. helmsii and Acacia synchronicia and isolated tall shrubs of Acacia synchronicia and A. tetragonophylla		