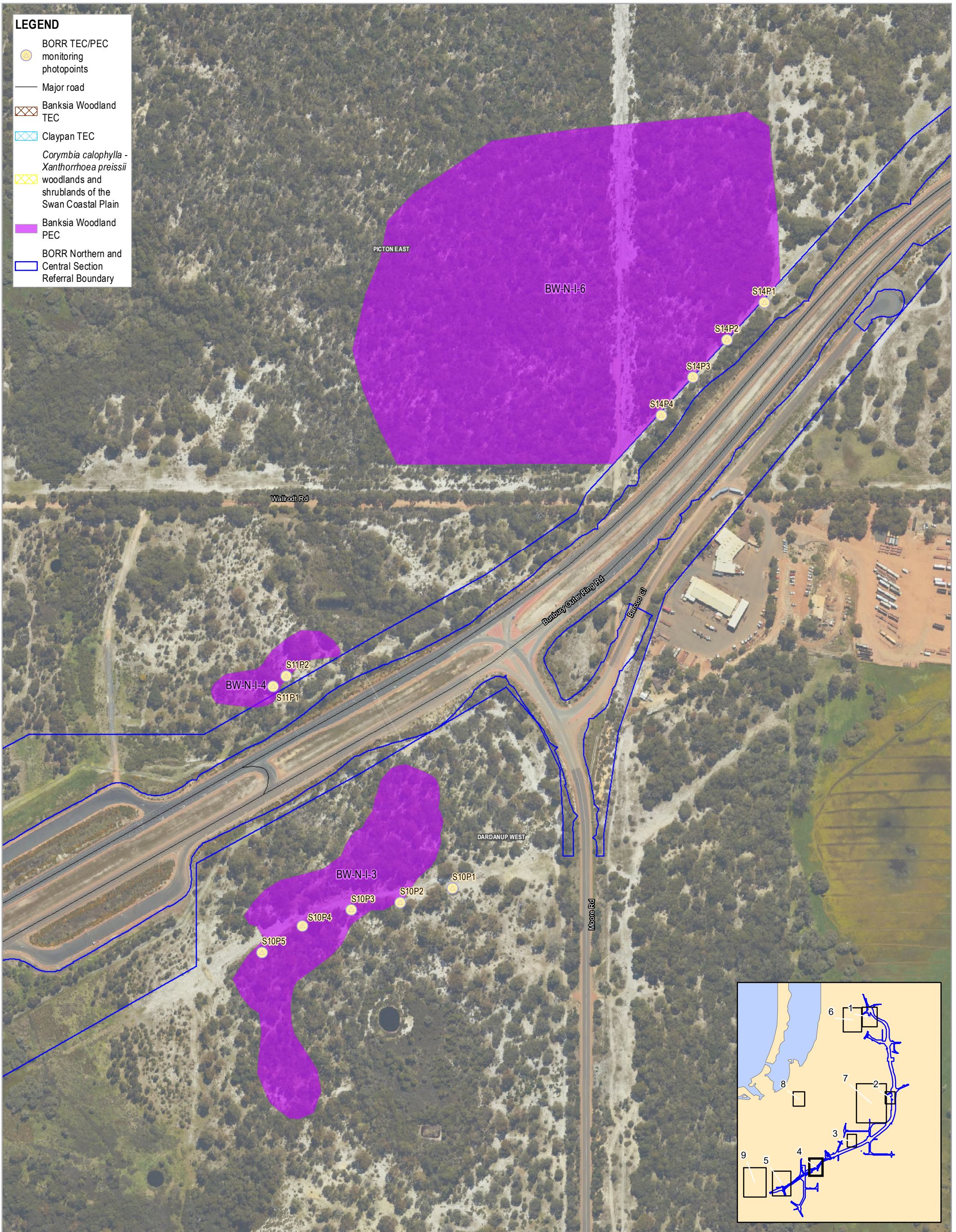
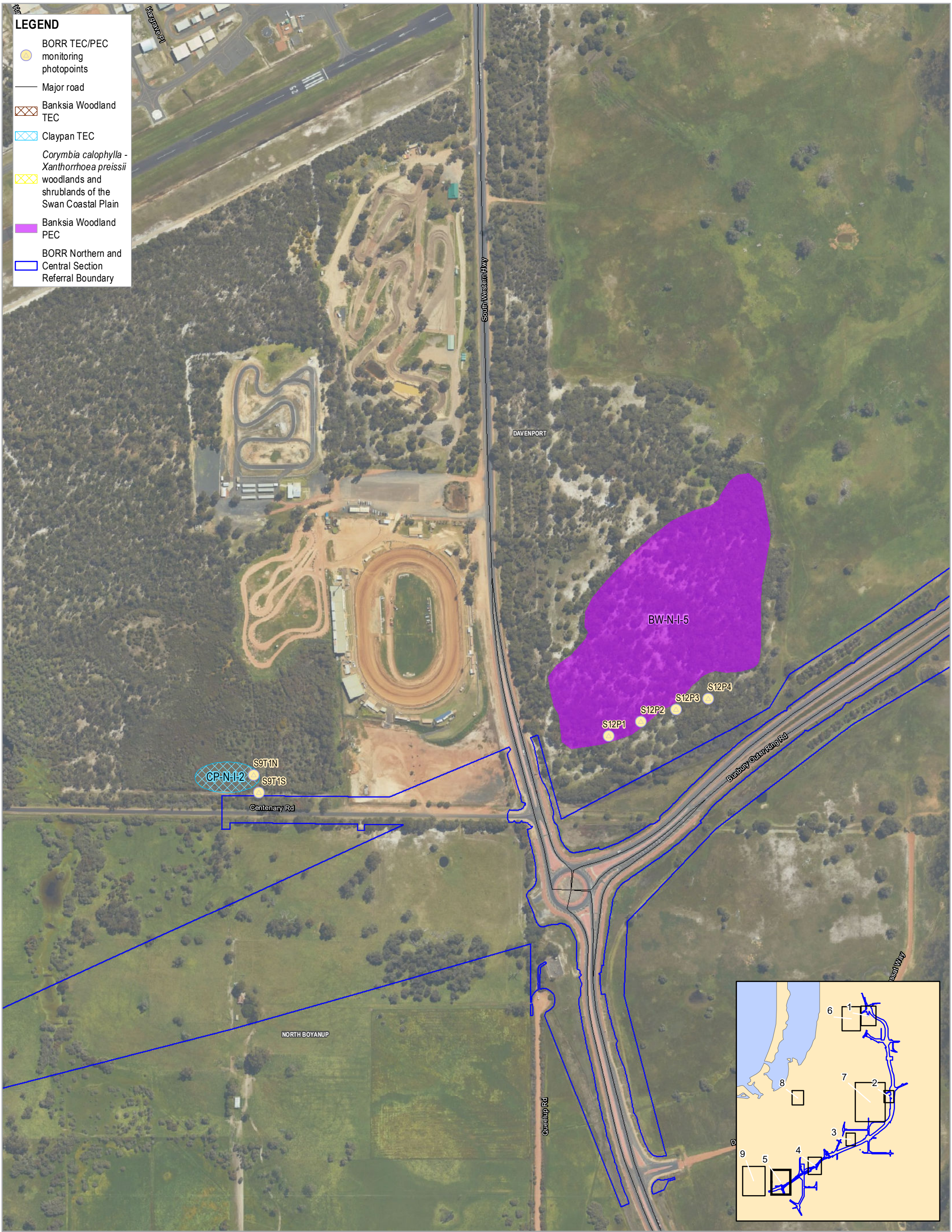


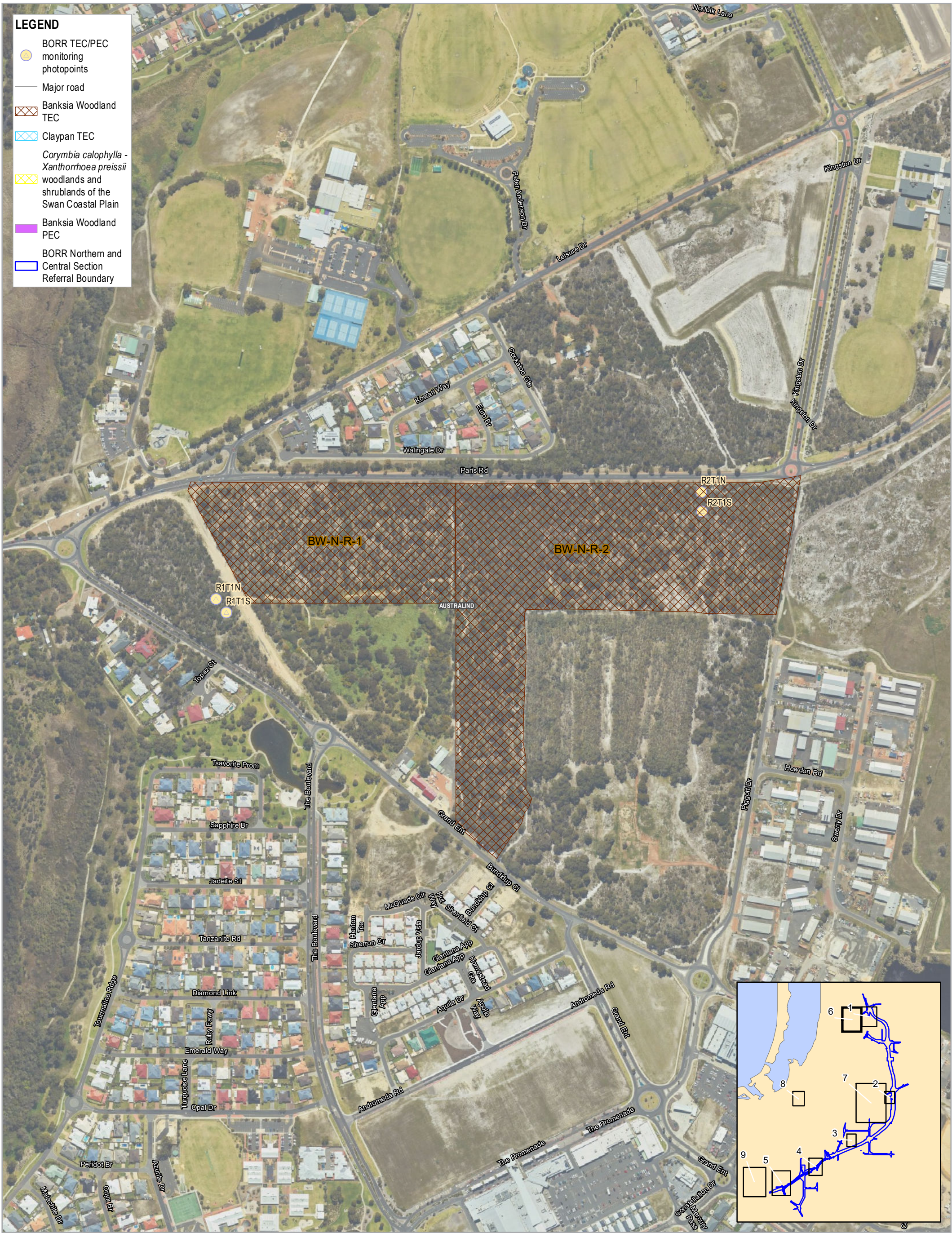
Data source: BORR team: North referral boundary - 20191016, TEC/PEC Monitoring locations - 201912; Landgate: Roads - 201805, Localities - 20180319, Imagery - WA Now accessed 20200131. Created by: mmikonen

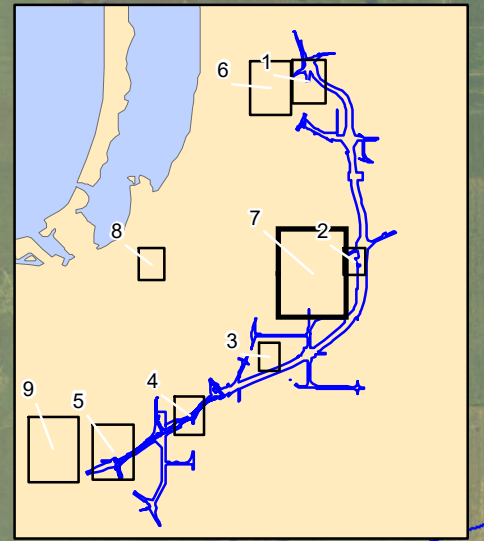
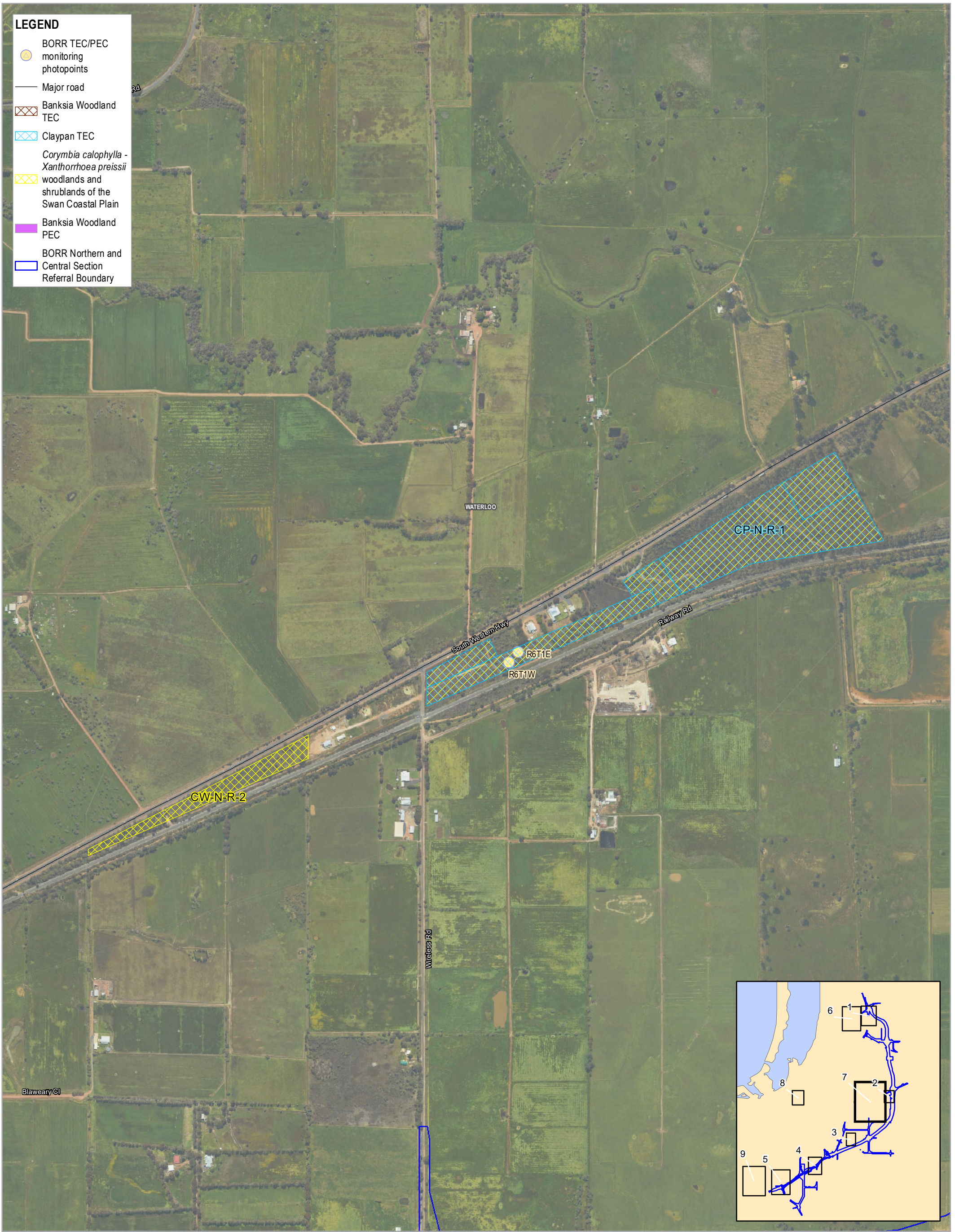


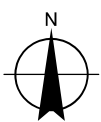


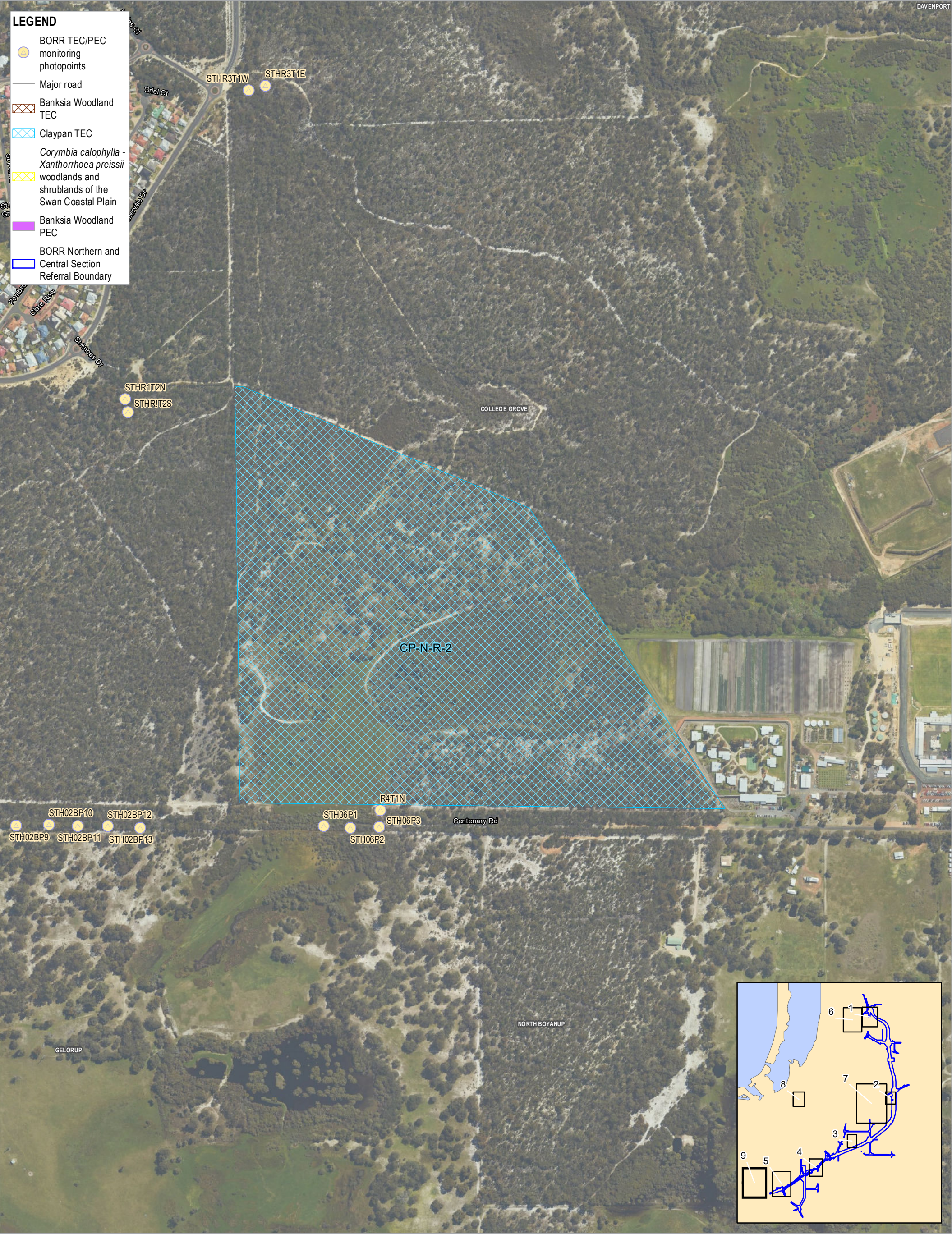
Data source: BORR team: North referral boundary - 20191016, TEC/PEC Monitoring locations - 201912; Landgate: Roads - 201805, Localities - 20180319, Imagery - WA Now accessed 20200131. Created by: mmikkonen

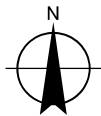
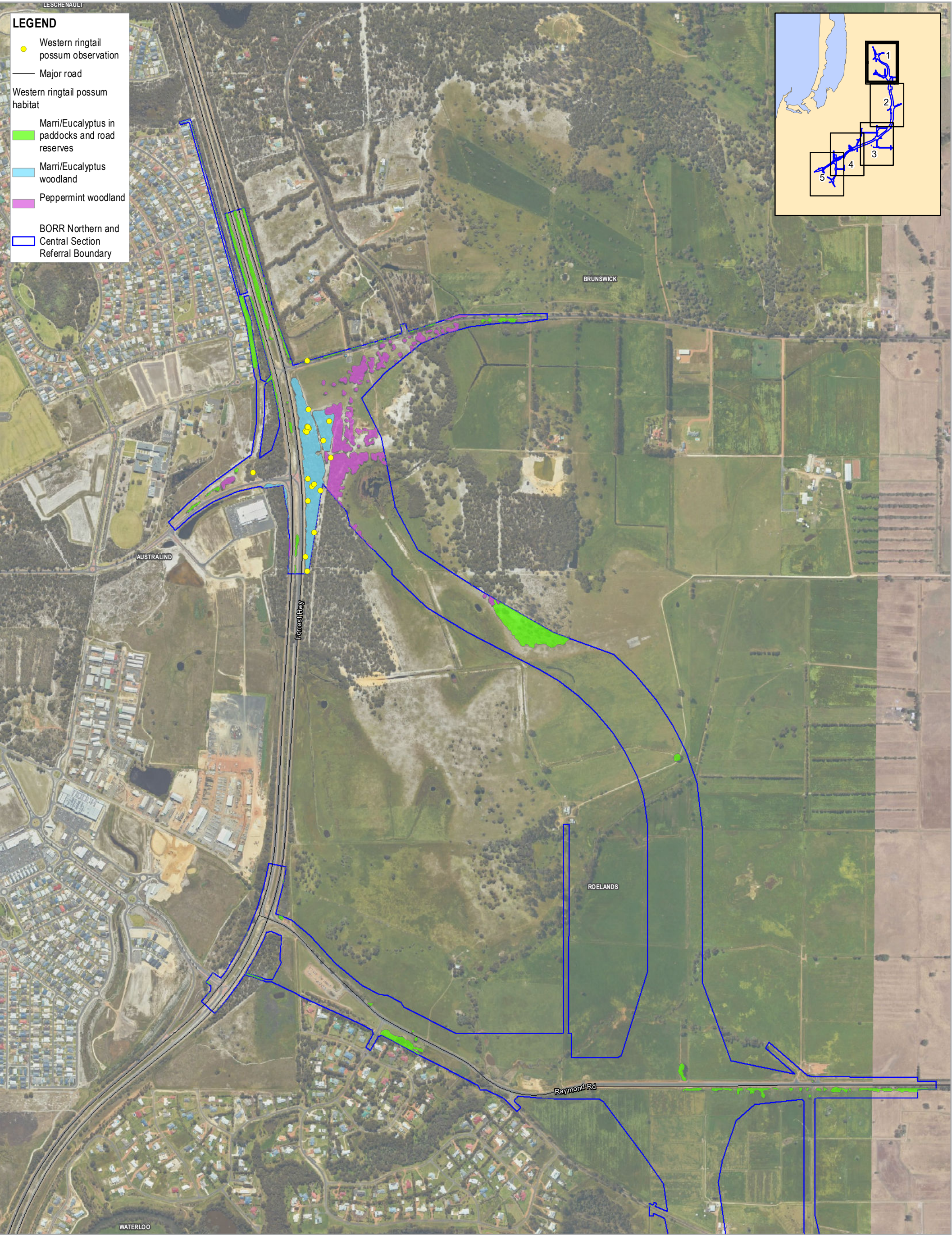


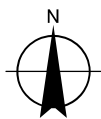
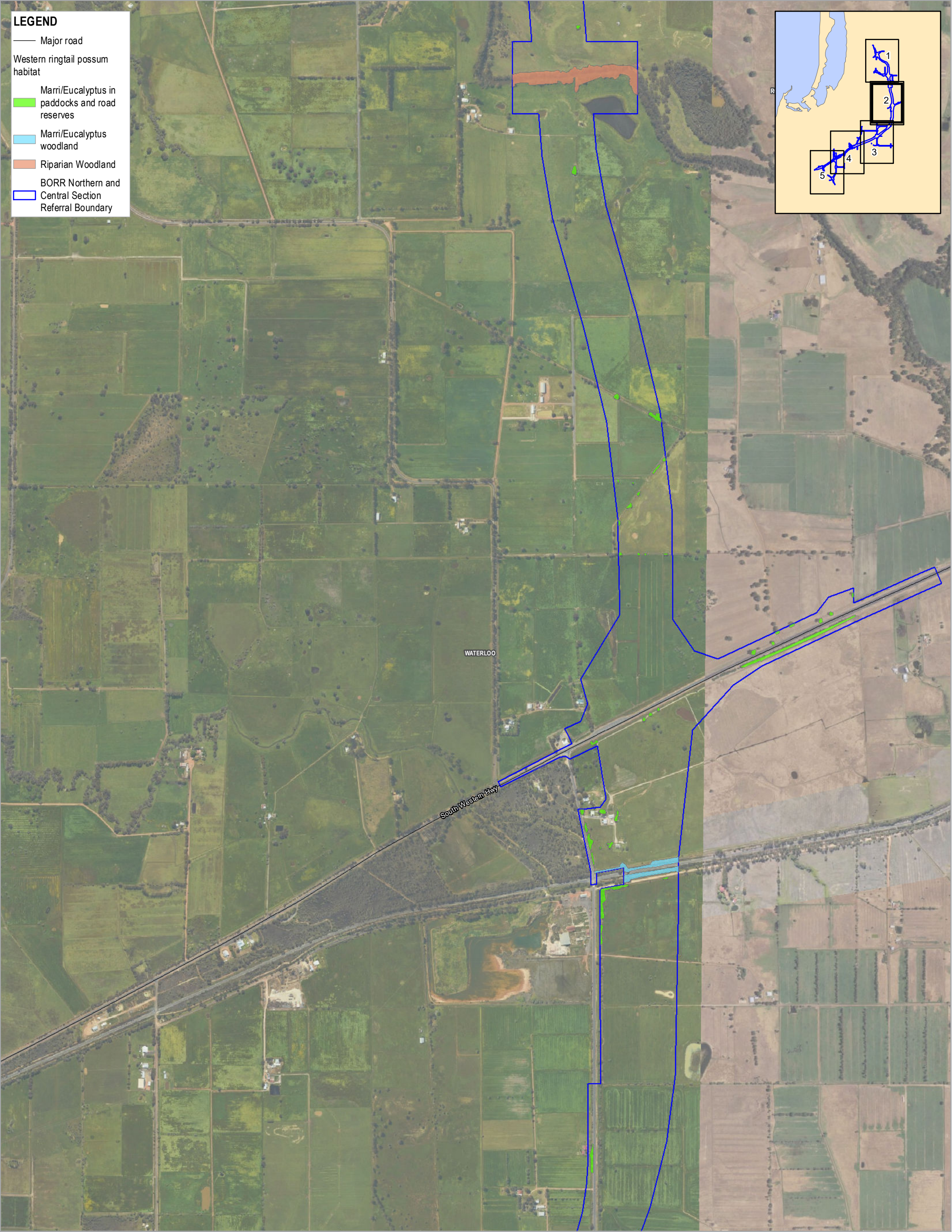


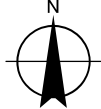
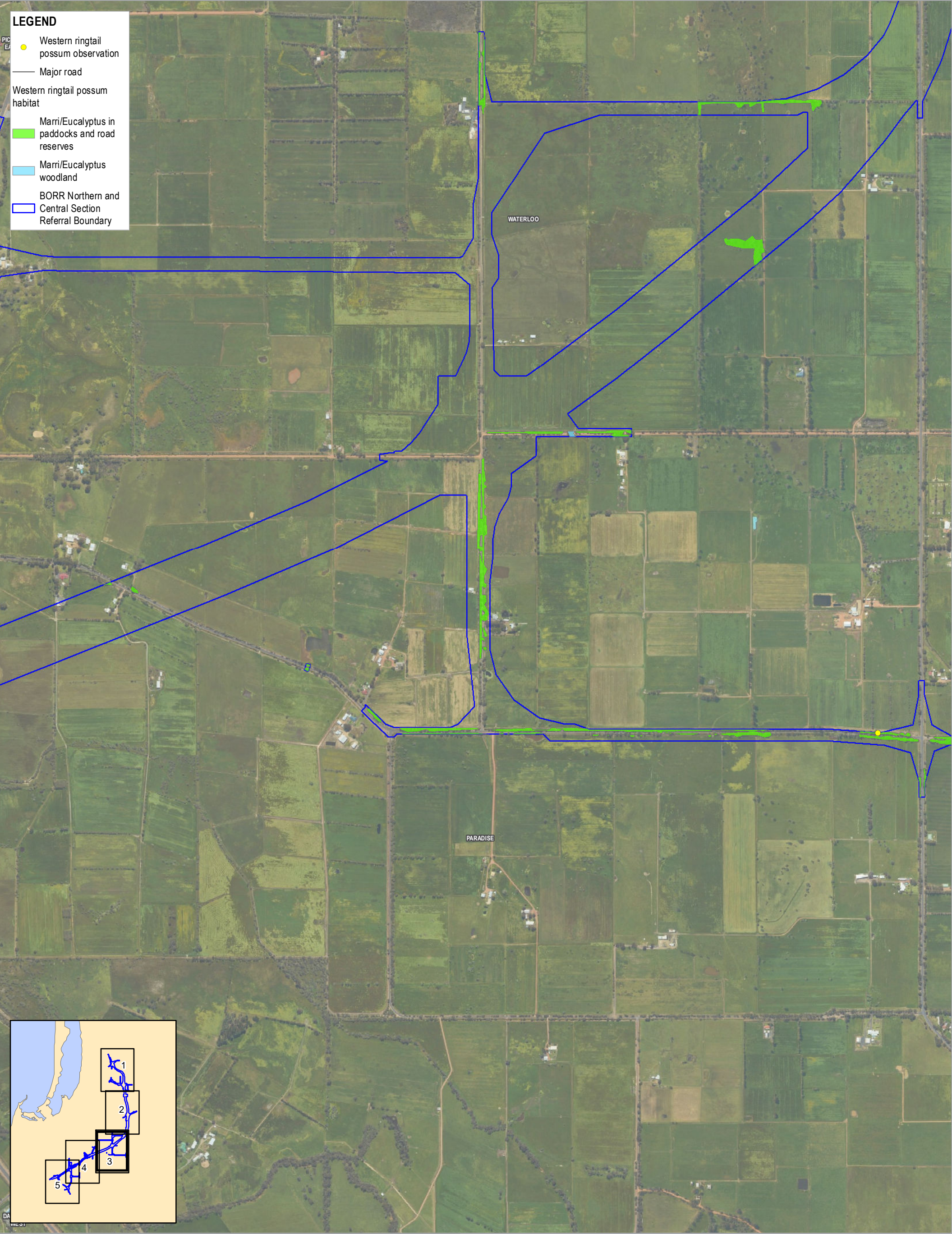


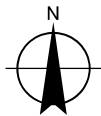
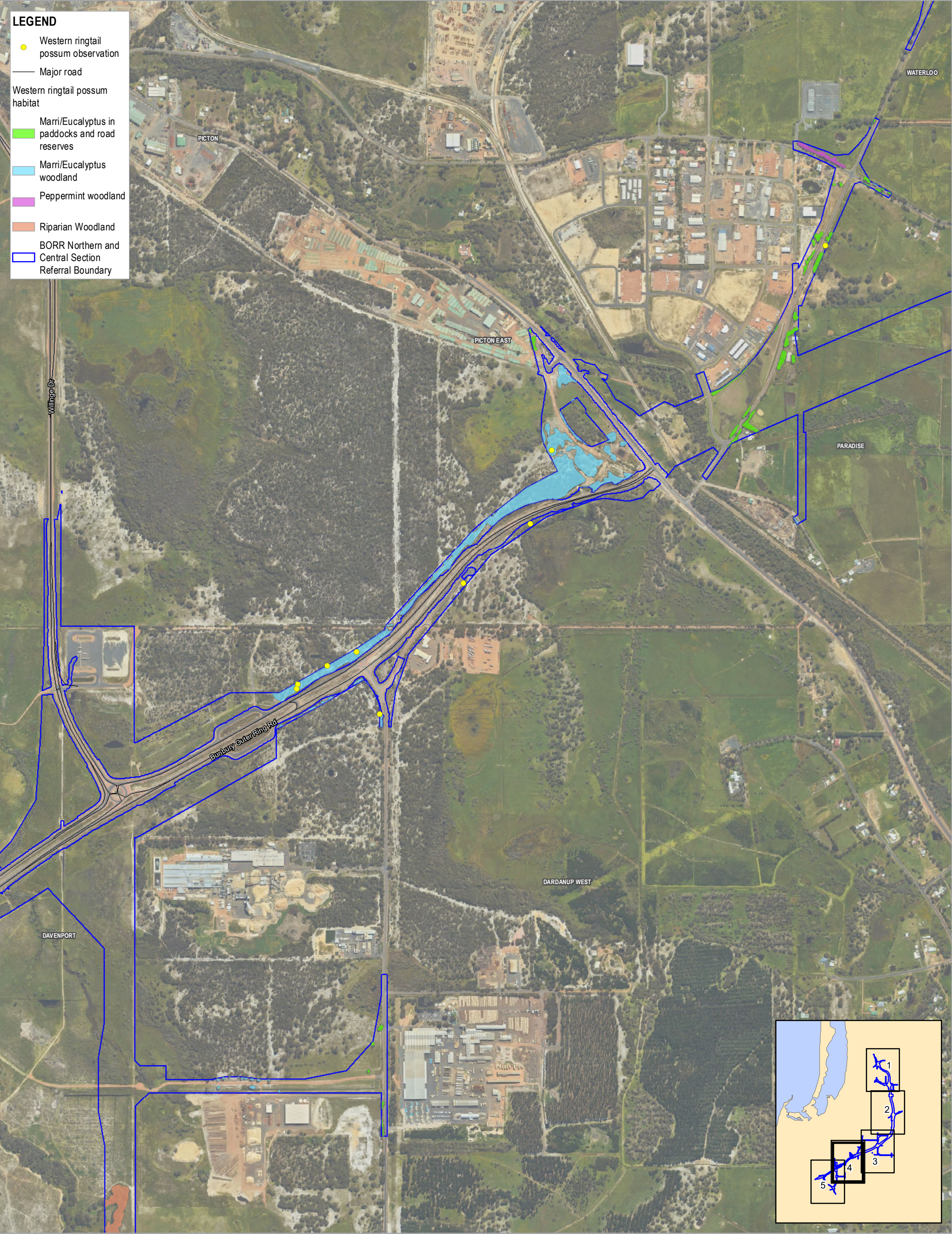


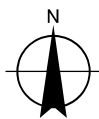
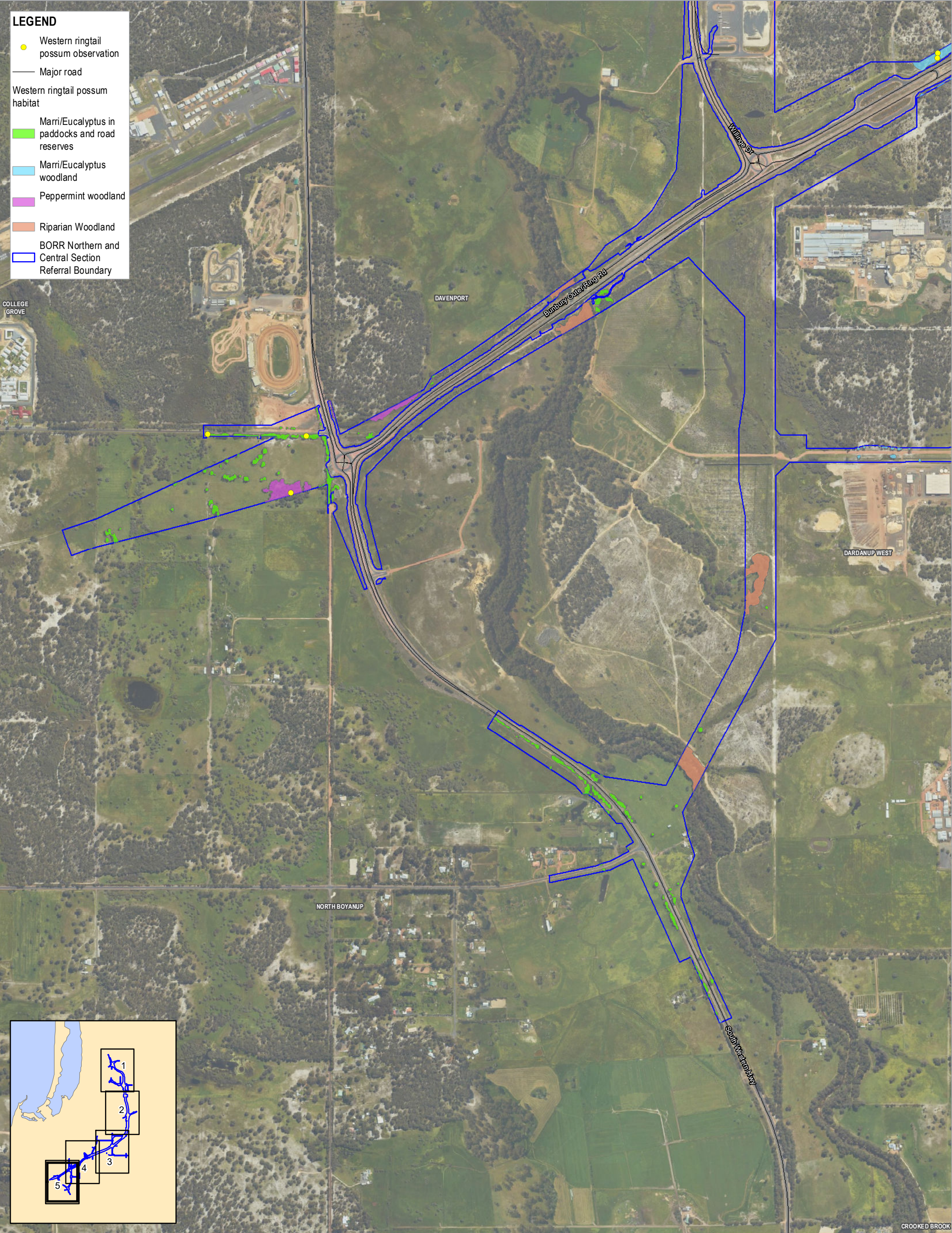


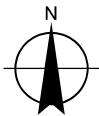
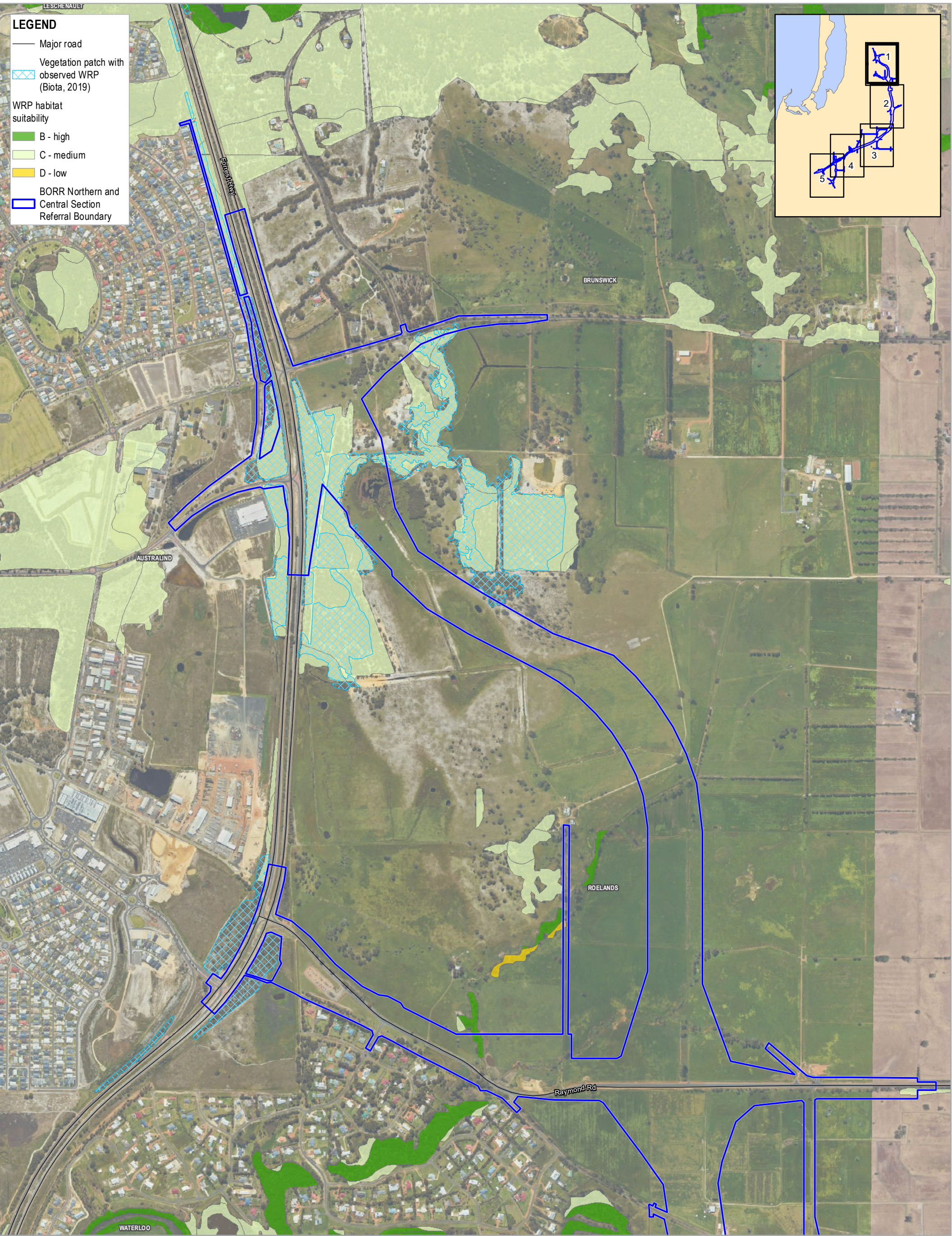












LEGEND

Major road

Vegetation patch with observed WRP (Biota, 2019)

WRP habitat suitability

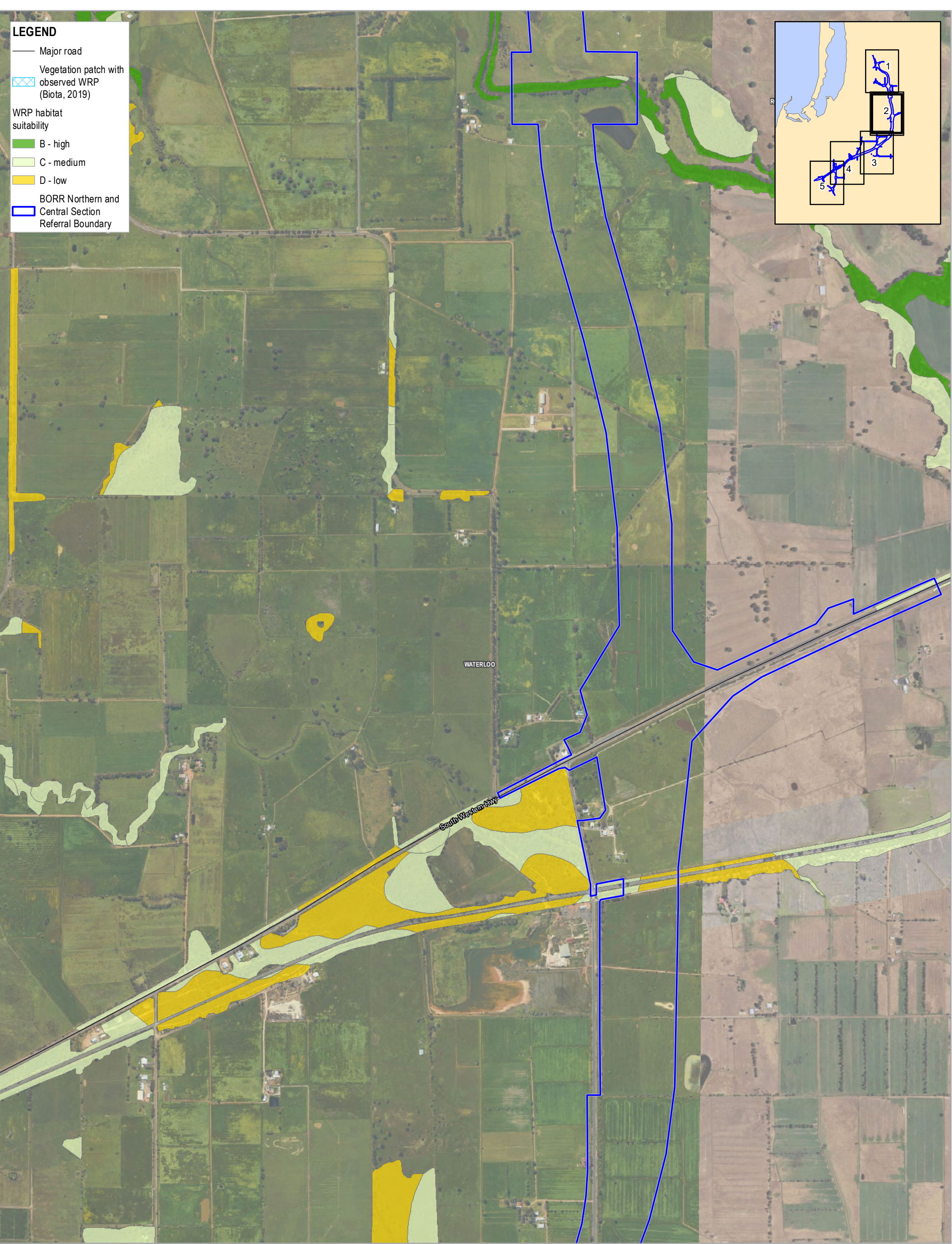
B - high

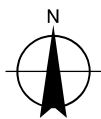
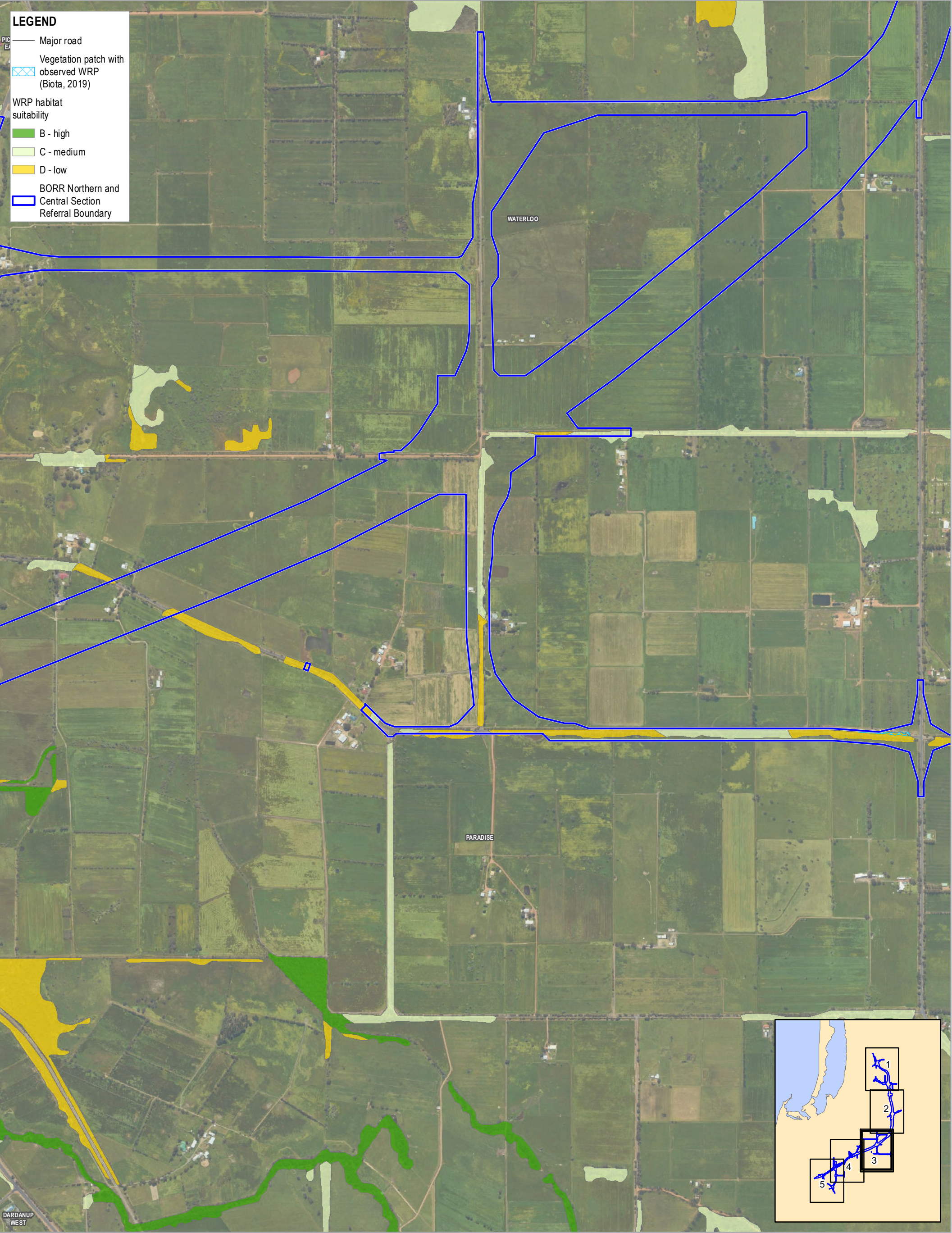
C - medium

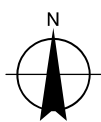
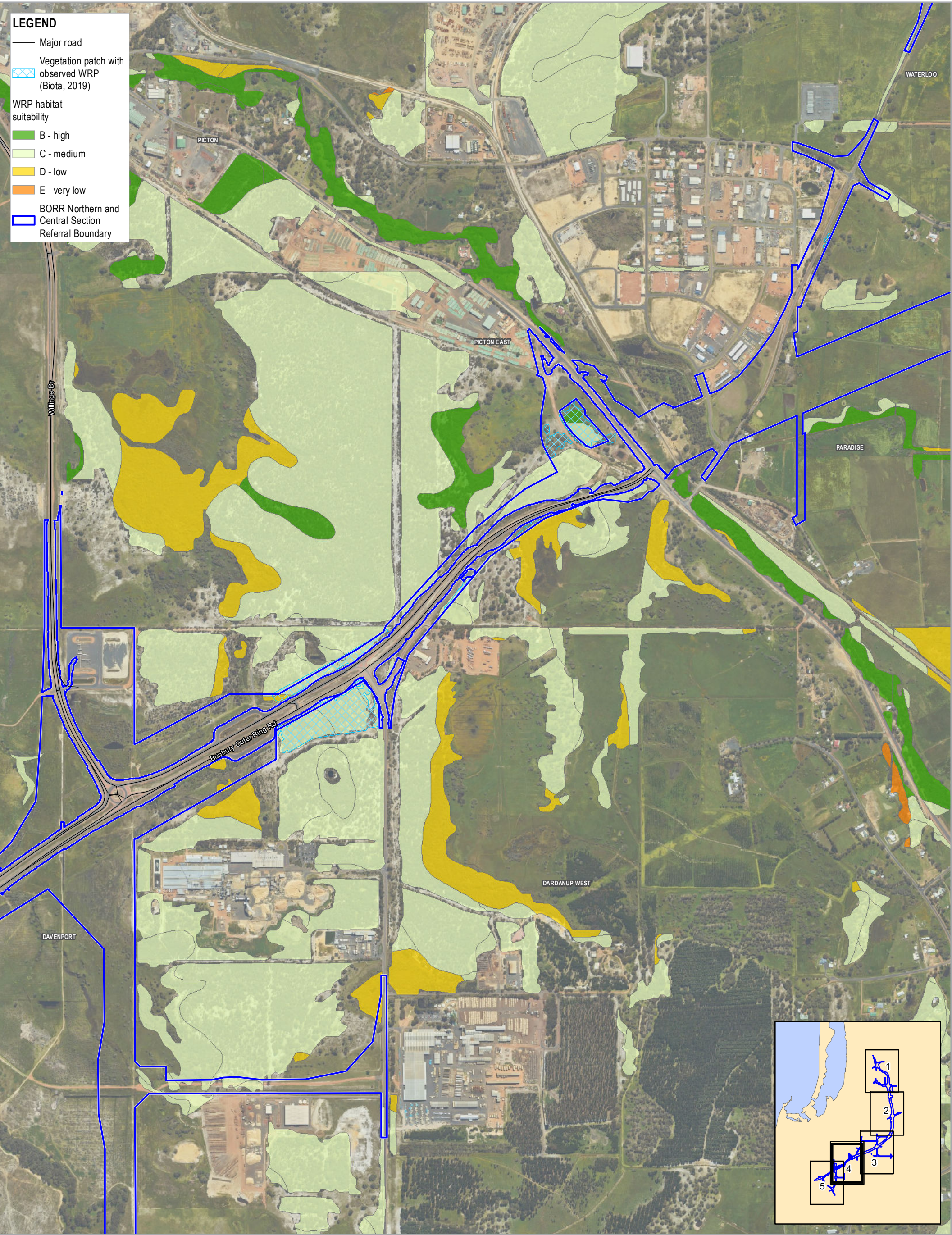
D - low

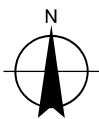
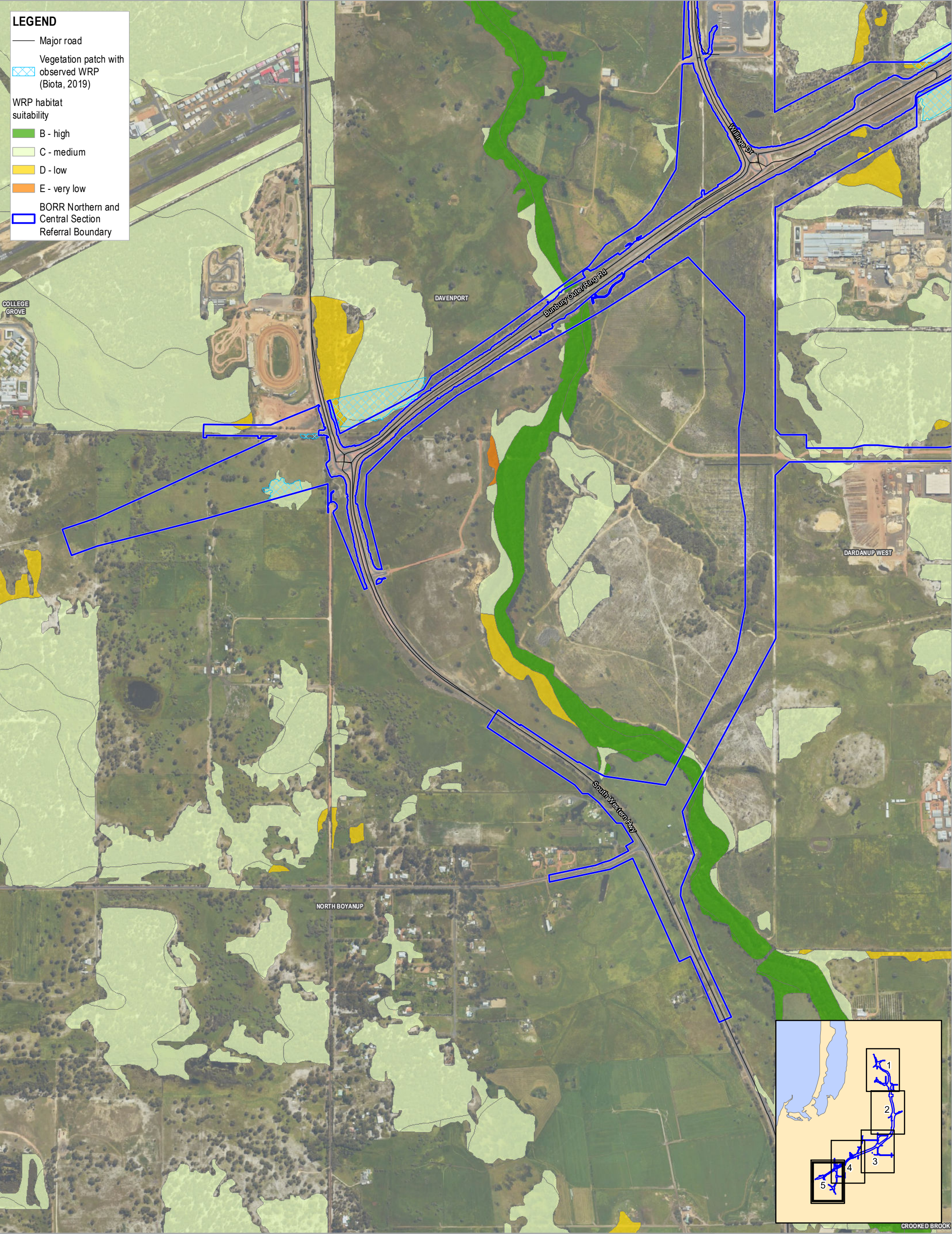
BORR Northern and Central Section

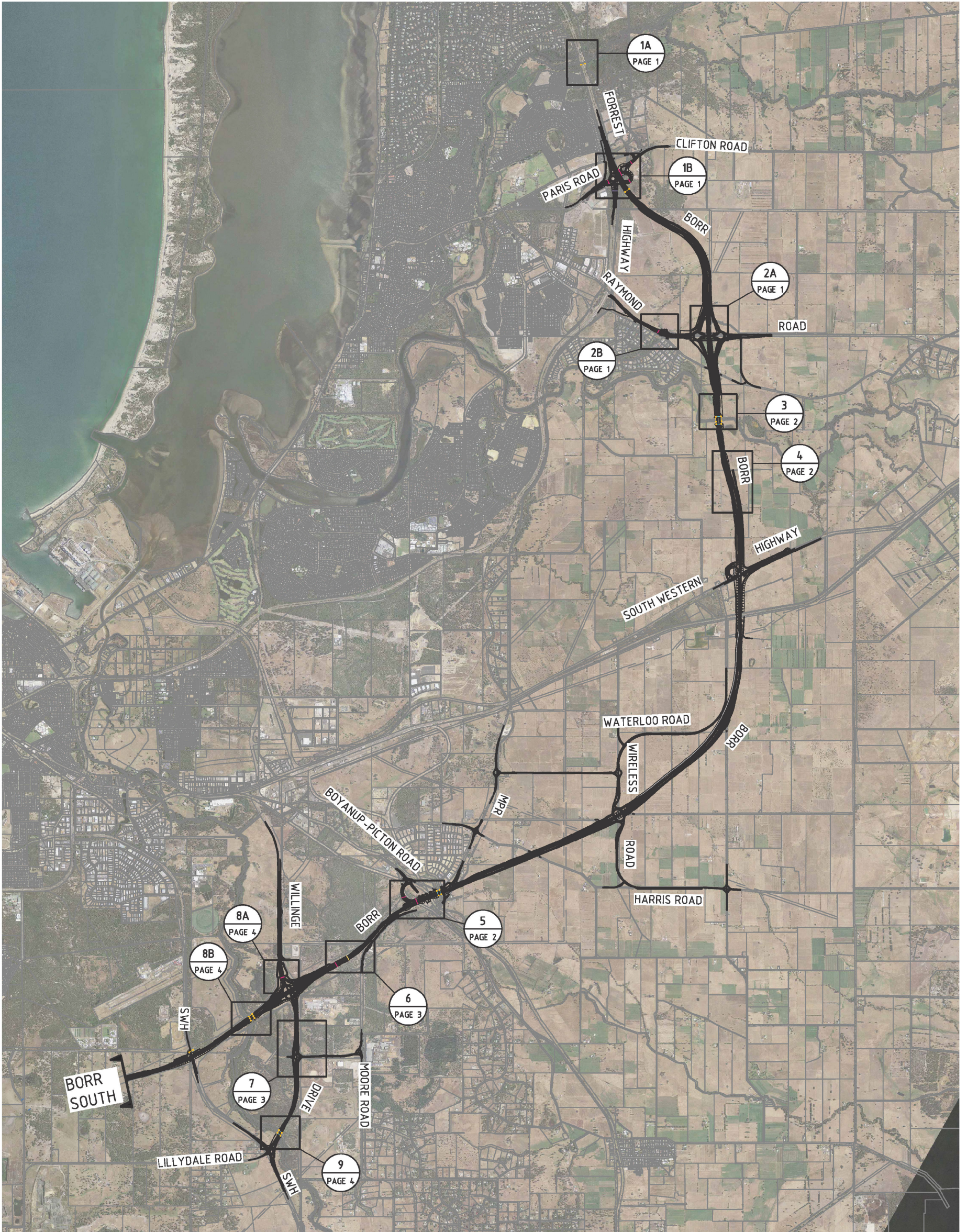
Referral Boundary



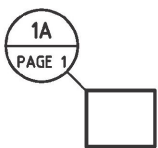








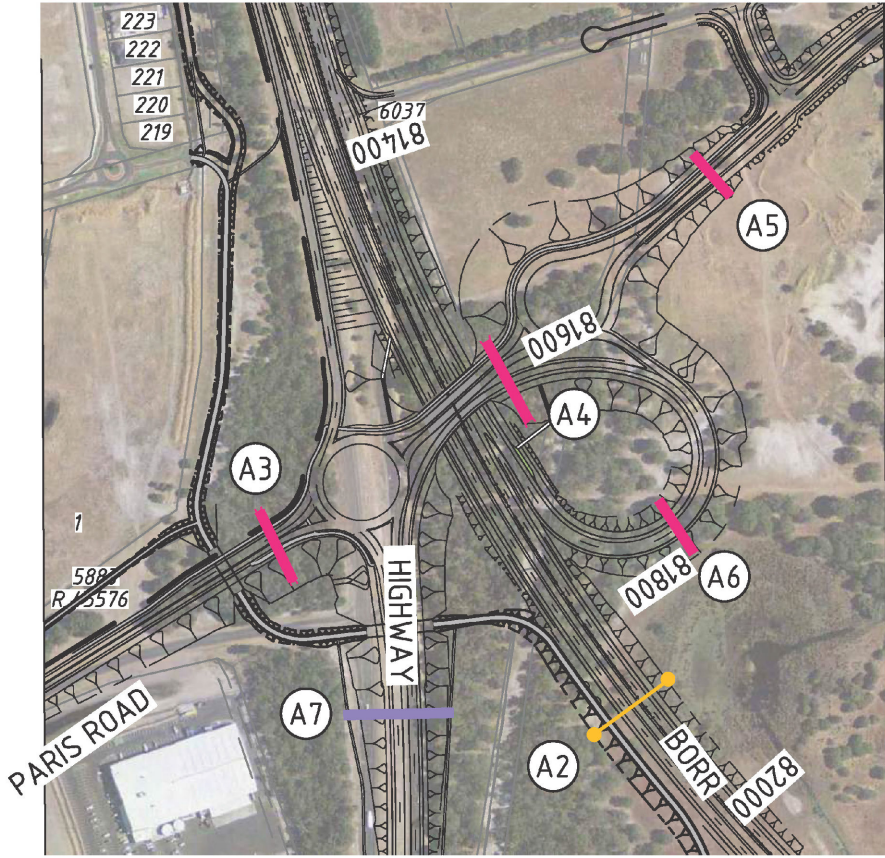
LEGEND



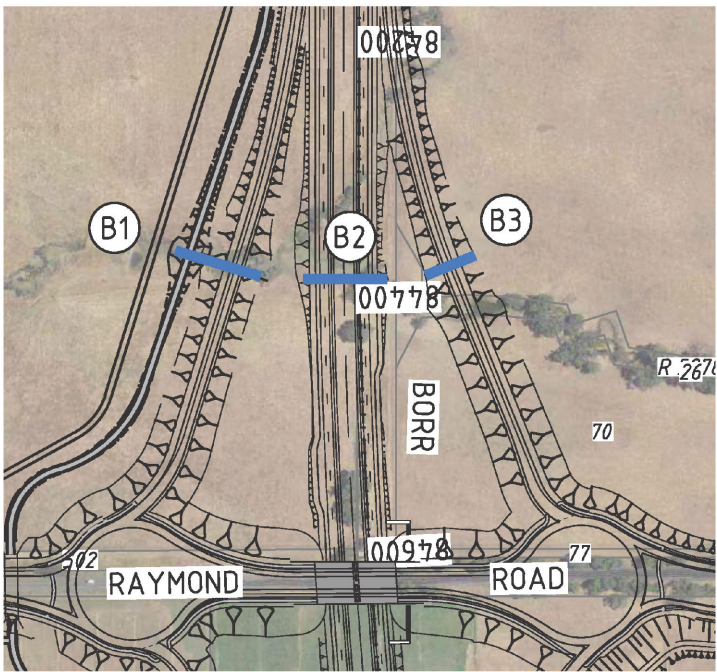
PROPOSED WESTERN RINGTAIL POSSUM CONNECTION - REFER TO CORRESPONDING DETAIL AND PAGE NUMBER FOR MORE INFORMATION



DETAIL 1A
1:5000



DETAIL 1B
1:5000



DETAIL 2A
1:5000



DETAIL 2B
1:5000



NOTES:

- DUAL USE CULVERTS INCLUDE A SHELF ABOVE THE 1YR ARI EVENT THAT IS AT LEAST 300mm WIDE AND 300mm HIGH.
- FAUNA UNDERPASSES TO INCLUDE 300mm WIDE SHELF NO MORE THAN 300mm FROM ROOF OF CULVERT.
- FAUNA ROPE BRIDGES TO BE DESIGNED TO MAIN ROADS APPROVAL.
- ALL LOCATIONS TO BE AGREED ON SITE.
- STRUCTURE SIZES PROVIDED ARE MINIMUM REQUIREMENTS.

LEGEND

- FAUNA UNDERPASS (BOX)
- FAUNA UNDERPASS (ARCH)
- DUAL USE CULVERT
- FAUNA ROPE BRIDGE
- FAUNA ROPE BRIDGE (UNDER BRIDGE)

FAUNA UNDERPASS		
STRUCTURE No.	SIZE (mm)	TYPE
A3 TO A6	2100 x 2100H	BOX
A7	6000 x 2100H	ARCH
B1 TO B3	2400 x 1200H	BOX
B4	600 x 600H	BOX

1:5000 0 25m 50 75 100 125 150 175 200 225 250 275 300 325 350 375