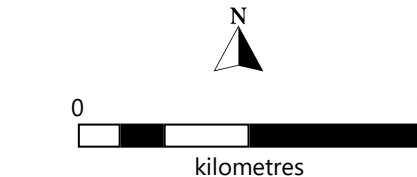


LEGEND

- Alternate case drawdown in meters at 0.1, 0.25, 0.5, 1 and 2
- Base case drawdown in meters at 0.1, 0.25, 0.5, 1 and 2
- Mining outline for year 2021
- Mining outline for year 2022
- Mining outline for year 2023
- Mining outline for year 2024
- Potential disturbance envelope

AUTHOR: GC
 DRAWN: LDS
 DATE: 14/05/2020

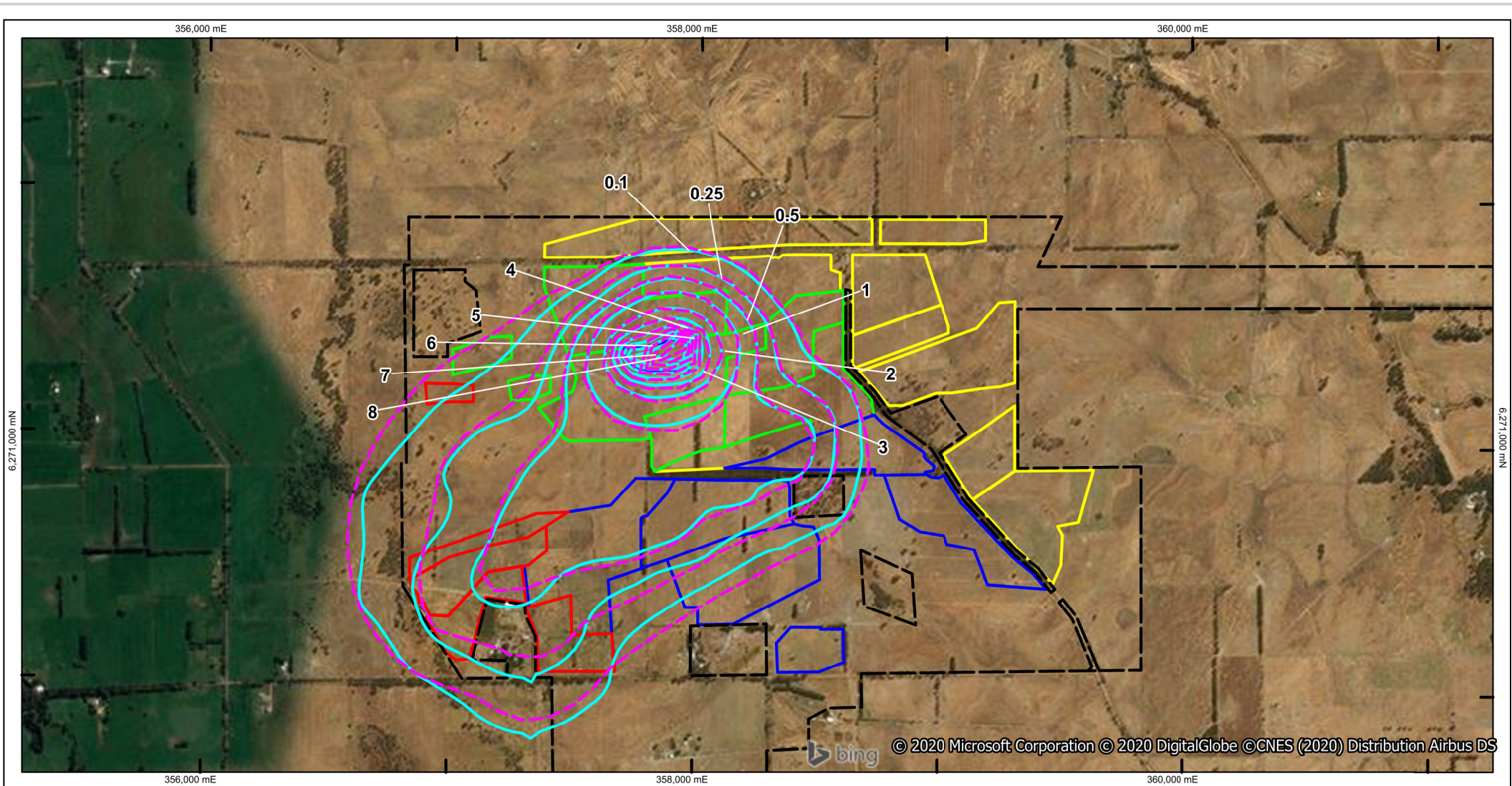
REPORT NO: 007
 REVISION: e
 JOB NO: 136



NOTES & DATA SOURCES:
 Mine outlines provide by Doral



FIGURE F32
Q4 – 2021
CONTOURS OF PREDICTED
DRAWDOWN IN SUPERFICIAL
AQUIFER DRY CONDITIONS
ALTERNATE CALIBRATION

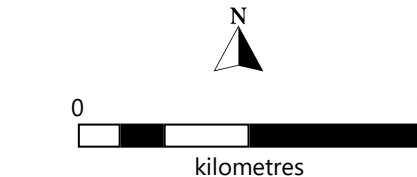


LEGEND

- Alternate case drawdown in meters at 0.1, 0.25, 0.5, 1 and 2
- Base case drawdown in meters at 0.1, 0.25, 0.5, 1 and 2
- Mining outline for year 2021
- Mining outline for year 2023
- Mining outline for year 2022
- Mining outline for year 2024
- Potential disturbance envelope

AUTHOR: GC
 DRAWN: LDS
 DATE: 14/05/2020

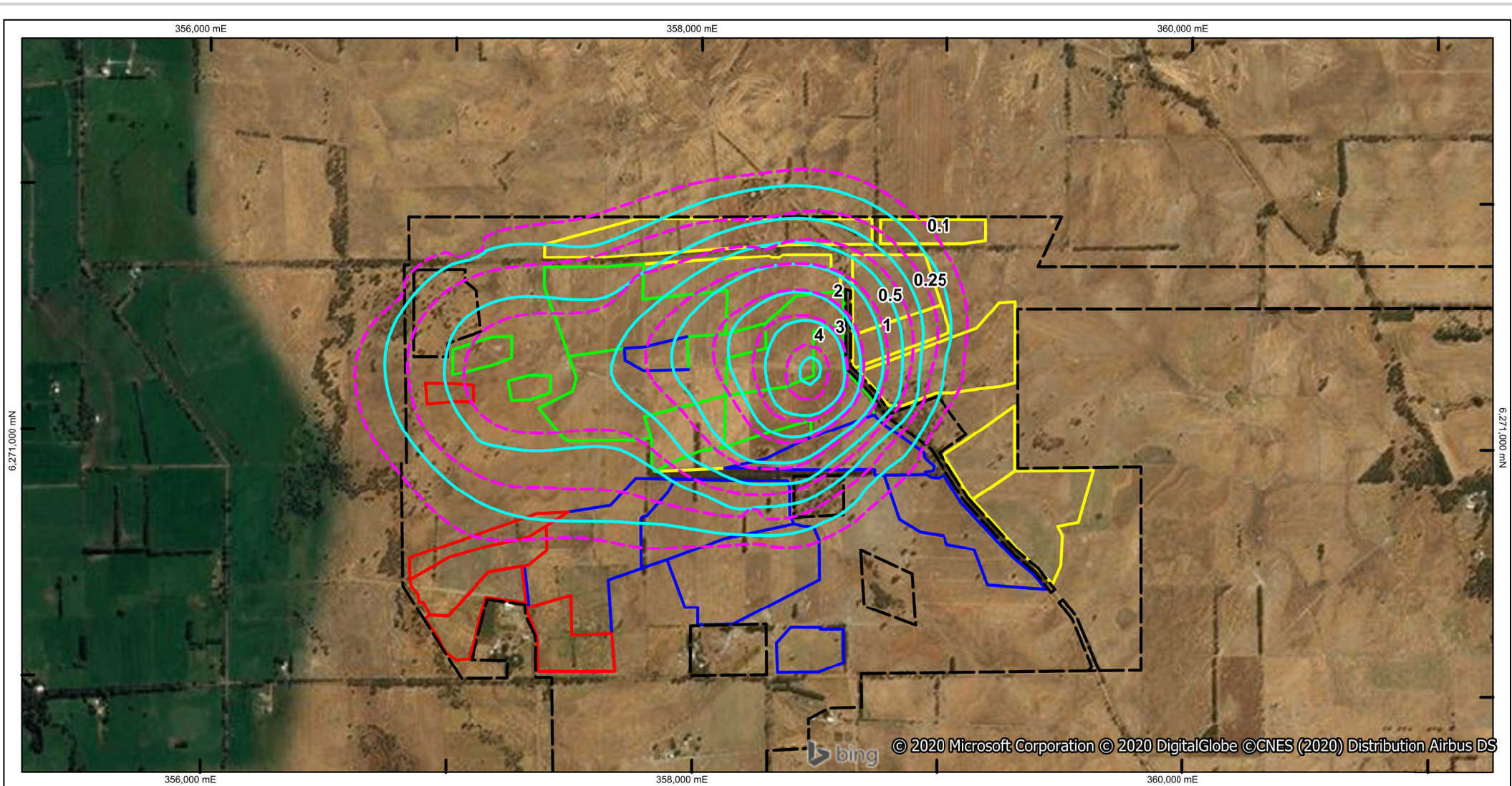
REPORT NO: 007
 REVISION: e
 JOB NO: 136



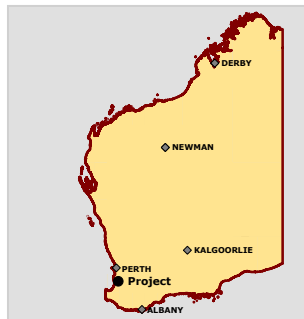
NOTES & DATA SOURCES:
 Mine outlines provide by Doral



FIGURE F33
Q4 – 2022
CONTOURS OF PREDICTED
DRAWDOWN IN SUPERFICIAL
AQUIFER DRY CONDITIONS
ALTERNATE CALIBRATION



LOCATION MAP



Location: F:\136\4 GIS\Workspaces\Groundwater Model

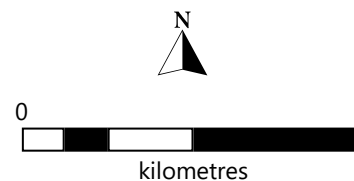
LEGEND

- Alternate case drawdown in meters at 0.1, 0.25, 0.5, 1, 2, 3 and 4
- - - Base case drawdown in meters at 0.1, 0.25, 0.5, 1, 2, 3 and 4
- Mining outline for year 2021
- Mining outline for year 2023
- Mining outline for year 2022
- Mining outline for year 2024
- - - Potential disturbance envelope

AUTHOR: GC
DRAWN: LDS
DATE: 14/05/2020

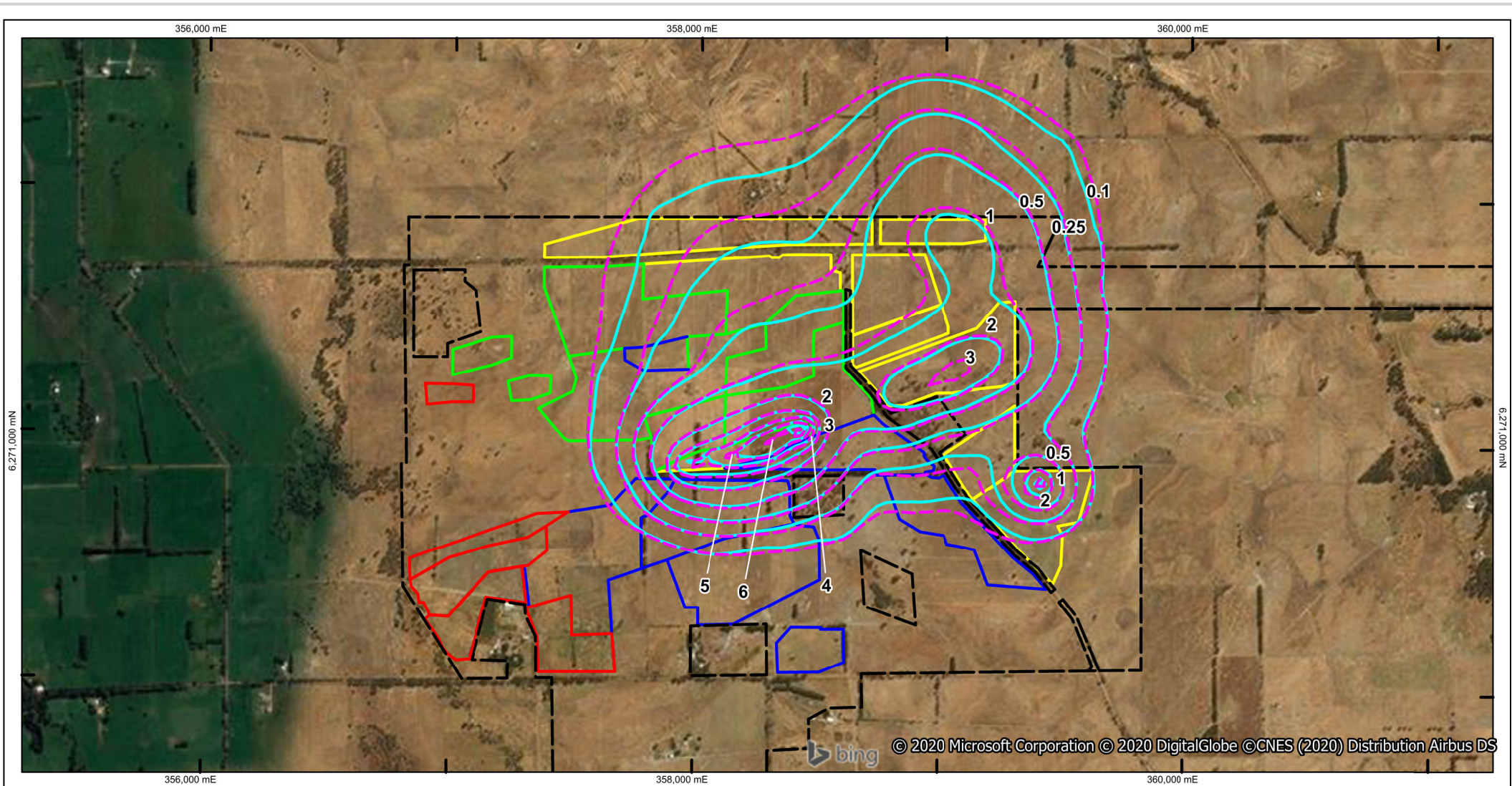
REPORT NO: 007
REVISION: e
JOB NO: 136

NOTES & DATA SOURCES:
Mine outlines provide by Doral

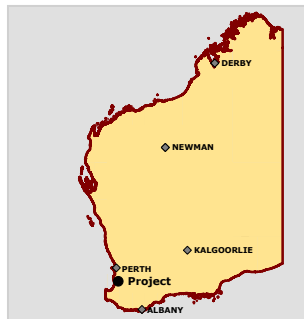


AQ2

FIGURE F34
Q4 – 2023
CONTOURS OF PREDICTED
DRAWDOWN IN SUPERFICIAL
AQUIFER DRY CONDITIONS
ALTERNATE CALIBRATION



LOCATION MAP



Location: F:\136\4 GIS\Workspaces\Groundwater Model

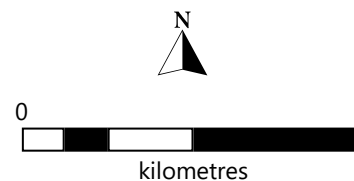
LEGEND

- Alternate case drawdown in meters at 0.1, 0.25, 0.5, 1, 2, 3 and 4
- Base case drawdown in meters at 0.1, 0.25, 0.5, 1, 2, 3 and 4
- Mining outline for year 2021
- Mining outline for year 2023
- Mining outline for year 2022
- Mining outline for year 2024
- Potential disturbance envelope

AUTHOR: GC
DRAWN: LDS
DATE: 14/05/2020

REPORT NO: 007
REVISION: e
JOB NO: 136

NOTES & DATA SOURCES:
Mine outlines provide by Doral



AQ2

FIGURE F35
Q4 – 2024
CONTOURS OF PREDICTED
DRAWDOWN IN SUPERFICIAL
AQUIFER DRY CONDITIONS
ALTERNATE CALIBRATION