



Arrowsmith Hydrogen Project (AHP)

## YSRC Heritage Survey

**Aboriginal Heritage Survey and Stakeholder Engagement**

*Comprising Women's cultural practice and additional Ethnographic aspects*

Document Control Project Cover Sheet Infinite Green Energy Pty Ltd Quality Management System		Reference Number: ARWD_EPA_9412 YSRC Heritage Survey Date: 28 Feb 2025 Approved by: SG			
<b>Project Acronym</b>	AHP				
<b>Project Title</b>	Arrowsmith Hydrogen Project				
<b>Managing Director / CEO</b>	Mr. Stephen Gauld				
<b>Lead – Project Manager</b>	Mr. Mick Hutt				
<b>Environmental Manager</b>	Mr. Peter Galloway				
<b>Parent Company</b>	Infinite Green Energy, Level 13, 99 St Georges Tce, Perth CDB WA 6000				
<b>IGE File No.</b>	ARWD - AHP				
<b>Document Title:</b> YSRC Heritage Survey					
<b>Document Issue</b>					
Author:		Peter Galloway			
Check by:		Michael Hutt			
Authorised by:		Stephen Gauld			
<b>Our Reference: Arrowsmith Hydrogen Project: EPA_9412 YSRC Heritage Survey</b>					
Issued for: Publication		<i>EPA: Pursuant to section 40(2)(a) of the Environmental Protection Act 1986</i>			
Date: 28 Feb 2025					
<b>Revision History</b>					
Rev	Description	Date	Author	Checked	Appr
A	Changes as per EPA requirements	24/08/24	PG	MH	SG
1	Update for Re-submission to EPA	23/02/25	PG	MH	SG

*IGE respectfully acknowledges traditional owners of the land and water it manages, and recognises their continuing connection to land, water and community*

## Acronyms

Acronyms	Definition
AHD	Arrowsmith Hydrogen Hub
AHP-1	Arrowsmith Hydrogen Project
AHA	Western Australian <i>Aboriginal Heritage Act 1972</i>
AHIS	Aboriginal Heritage Information System
AHP	Arrowsmith Hydrogen Project
DPLH	Department of Planning, Lands and Heritage
EPA	Environmental Protection Authority
IGE	Infinite Green Energy Pty Ltd
GPS	Global Positioning System
HISF	Heritage Information Submission Form
NTA	Commonwealth <i>Native Title Act 1993</i>
OHP/s	Other Heritage Place/s
PAD/s	Potential Archaeological Deposit/s
PDA	Project Development area
SandS	Sticks and Stones Cultural Resources Management Pty Ltd
YSRC	Yamatji Southern Regional Council

## 1. Context

Frequently women are absent during consultations in the EIA process. This is important because impacts from construction projects affect women and men differently, particularly from a cultural perspective

Environmental decision-making entails the processes by which decisions are made regarding activities that utilise natural resources or alter the cultural landscape in a particular way. These decisions will have consequences for the environment and the Yamatji people.

Surveys from an archaeological and ethnographic perspective help to identify, predict, educate, mitigate, minimise, and communicate to the public the cultural and social consequences of a proposed projects upon traditional owners of the land.

Stakeholder meetings, Impacts assessments and surveys create a key opportunity to ensure women and men's voices and concerns are heard and communicated. If conducted meaningfully, it can uphold the rights of women and men to participate in and influence decisions that will impact them both.

However, there are sometimes cultural inequality issues that prevent women from engaging in community consultations in comparison to men. Therefore, considering the gender dynamics at play is crucial to clearly understanding the context, cultural, and traditional norms, and practices of the impacted communities, and vital to ensuring potential cultural and historical impacts are identified and addressed.

Additionally, it is imperative to increase women's voices and input during impact mitigation and management processes, particularly in identifying potential impacts by capturing women's distinctive cultural, social, political, and economic realities; thus, allowing women themselves to identify how risks can be mitigated.

*Women have an essential role to ensure the critical minerals sector takes full advantage of the current context and that it does so in a manner consistent with a just and sustainable energy transition. Gender considerations should be included in impact assessments, regulations to ensure inclusive consultations take place for Australian critical projects domestically and overseas are of paramount importance. (Critical Minerals Strategy 2023)*

## 2. Yamatji Nation Country

The Mid-West region of Western Australia is approximately 472,336 km<sup>2</sup> in size, extending north and south of the administrative centre of Geraldton and includes parts of Carnamah, Chapman Valley, Cue, Greater Geraldton, Irwin, Meekatharra, Morawa, Mount Magnet, Perenjori, Three Springs, Wiluna and Yalgoo. The area is covered by multiple native title claims and determinations including Amangu, Badimia, Hutt River, Mullewa Wadjarri, Naaguja, Nanda, Wadjarri Yamatji, Widi Mob, Wutha, and Yugunga Nya.

The Yamatji Nation Native Title Determination Area (WCD2020/001) is the product of the combined settlement of four distinct native title claims, the Southern Yamatji, Hutt River, Widi Mob and Mullewa Wadjarri, over 48, 000 km<sup>2</sup> of land and water ways in the Mid-West region. The Traditional Owners continue to hunt in the region, as well as practice their traditional culture, such as performing ceremonies and paying respects to ancestral spirits.

The land specific to the Southern Yamatji Native Title Claim (WC2017/002) encompasses an area of approximately 28,000 km<sup>2</sup> within the Yamatji Nation Native Title Determination and covers the land along the coast from Coronation Beach Area (DPLH OHP ID 15859) south to the Mid-West town of Leeman, extending east as far as the Wangara Creek & Salt Lakes site (DPLH OHP ID 18906). Research undertaken in the region surrounding Geraldton in 1970s and 1980s indicated evidence for Pleistocene occupation along the Murchison and Greenough Rivers (Hallam, 1987).

The Mid-West includes seven of the Interim Biogeographic Regionalisation for Australia (IBRA) subregions as defined by Thackway and Cresswell (1995); Geraldton Sandplains, Yalgoo, Murchison, Avon Wheatbelt, Gascoyne, Little Sandy Desert, and Gibson Desert. Each subregion is associated with a defining topographical feature of the Mid West region. The project area discussed in this report is located within the Geraldton Sandplains and Swan Coastal Plain bioregions, in Western Australia, which cover a combined area of approximately 3,142,149 hectares.

### 3. Cultural Landscape

The ethnographic record reflects a diversity of views regarding the traditional organisation of social and linguistic boundaries within the Mid-West region; boundaries that have often been defined along the circumcision and subincision lines, which separated the Geraldton Coastal Region from Aboriginal groups further inland (Tindale 1974). Embedded within these topographical features are Law, stories, Dreamtime pathways, ancestral spirits and traditional travel routes through country. Pathways travelled by the mythical beings who transformed the lands were called 'Dreaming tracks' and the maps people used to travel across the country were often depicted

in songs. Thus, song lines or stories tell the journeys of ancestral spirits that moulded the earth as they travelled across country, including mythical water snakes called *Bimara* (Green 2001; Shaw and Martin 2011).

In 1926 anthropologist Radcliffe-Brown noted that the 'Rainbow- Serpent Myth' was widely distributed throughout Aboriginal Australia, and was associated with quartz-crystal, a substance constantly made use of by medicine-men and regarded as embodying "...great magical virtue" (Radcliffe-Brown 1926, p.19). Radcliffe-Brown referred to the Rainbow-Serpent as *Warlu* (alternative names also include *Bimara*), who is believed to live in deep, permanent waterholes and regarded as being dangerous to approach. Ceremonies associated with these areas often relate to the increase and maintenance of animal and plant species, and the reproduction of natural phenomenon like rain and sun (ibid.).

### 4. Water Resources

The Mid-West climate is described as being arid, so, consequently knowledge of reliable water sources was indispensable for human survival in the area. Ethnographic and archaeological sites are therefore concentrated along major water sources including the Murchison, Hutt, Hill, Moore, Irwin, Greenough and Gascoyne rivers and permanent lakes such as Mongers, Moore and Yaya Yara. Additionally, the Bully and Woonana Pools and the Cattle Pool on the Lyons River are permanent river pools. (Department of Environment 2004).

The Yamatji people of the Mid West region are also known to have utilised natural cavities forming in rocky outcrops, known as rock holes and gamma holes. These were often covered over with a movable stone in order to protect the gathered water from evaporating and being contaminated. To this day, Yamatji people continue to maintain these water sources by cleaning them and covering them up.

Within the (former) Southern Yamatji area of the Yamatji Nation Native Title Determination area, three main water ways can be considered significant to the Traditional Owners. Southern Yamatji country is dissected through the middle by the Irwin River, the main watercourse within the native title claim. To the north of Southern Yamatji Country lies the Greenough River, with the Wangara Creek & Salt Lakes, a site that encompasses a series of salt lakes, springs, dams and rock holes, situated along the easternmost boundary of the claim area. The creation of these rivers and their tributaries, and the Wangara Creek & Salt Lakes are attributed to the movement of two *Bimarra* from pool to pool up and down the waterways. *Bimara* are inherently linked to the 'Dreamtime' responsible for creating the landscape and water sources (Shaw and Martin 2011, p.53). Permanent water sources continue to be of high cultural importance, indicating the health of country, which in turn reflects the health of culture (Barber and Jackson 2011).

### **Key waterways**

- Greenough River Irwin
- River Lockier River
- Arrowsmith River
- Yarra Yarra Lakes
- Mongers Lake Waterway
- Wangara Creek & Salt Lakes
- Tenindewa Creek

## 5. IGE Scope

### **Infinite Green Energy Arrowsmith Hydrogen Project – Women's Ethnographic Consultation**

Sticks and Stones Cultural Resources Management (SandS CRM) have been engaged by the Yamatji Southern Regional Corporation (YSRC) under its Yamatji Proponent Standard Heritage Agreement (YPSHA) with the Infinite Green Energy (IGE) Arrowsmith Hydrogen Project AJHP-1 to undertake a women's cultural practice consultation and a further ethnographic heritage values consultation. The consultation is a response the Environmental Protection Authority (EPA) request for additional ethnographic information resulting from the previous IGE project submission.

Specifically, the EPA sought a position on if there were any women's ethnographic features in the project area, and if so, does the project impact these features. The EPA sought this response as they noted the initial consultation did not include women's representation.

The selection of knowledgeable Yamatji people was delegated to the Southern Yamatji Cultural Committee (SYCC) by the YSRC, where the SYCC is a Yamatji community designated body advising on culture and heritage issues. The participants were selected by the SYCC as being suitable representation for the consultation.

### Selected Groups: Women's Survey

The consultation was undertaken of two days with two separate groups. The group days were selected based on participant availability and were comprised of:

#### Group 1 – Monday 03 April 2023

Bobbi-lee Pearce (YSRC)	Rickisha Dann (YSRC)	Melanie Alone (YSRC)
Karen Bonney (YSRC)	Angelina Dann (YSRC)	Michaela Dann (YSRC)
Daniel Puletama (SandS)	Bianca Waldie (SandS)	

#### Group 2 – Tuesday 04 April 2023

Karen Whitby (YSRC)	Delveen Whitby (YSRC)	Wendy Callow (YSRC)
Lorelle Callow (YSRC)	Gail Eades (YSRC)	Bianca Waldie (SandS)
Daniel Puletama (SandS)	Michael Hutt (IGE Construction Mnager)	Peter Galloway (IGE Environmental Manager)

#### Mixed Group

#### Group 3 – Tuesday 04 April 2023

Karen Whitby (YSRC)	Delveen Whitby (YSRC)	Russell Bandy (YSRC)
William Little (YSRC)	Daniel Puletama (SandS)	

#### Group 4 – Wednesday 05 April 2023

Norman Little (YSRC)	Angelique Ronan (YSRC)	Bianca Waldie (SandS)
Daniel Puletama (SandS)	Michael Hutt (IGE)	Peter Galloway (IGE)

#### Group 5 – Thursday 06 April 2023

David Ronan (YSRC)	Lockie Ronan (YSRC)	Noel Taylor Snr (YSRC)
Noel Taylor Jnr (YSRC)	Cleave Narkle (YSRC)	Kierran Taylor (YSRC)
Daniel Puletama (SandS)	Bianca Waldie (SandS)	

## Survey Group Photos



Figure 1: The YSRC group 1 site inspection team (Women's)



Figure 2: The YSRC group 2 site inspection team

## **6. Background**

Infinite Green Energy are proposing to construct and operate the Arrowsmith Hydrogen Production facility (AHP-1). The facility is planned to initially produce enough hydrogen to displace 118,000 tons of CO<sub>2</sub> emissions from the atmosphere annually.

IGE, (formerly Infinite Blue Energy) have previously undertaken archaeological and ethnographic surveys at the AHP-1 project development area (PDA) to identify potential Aboriginal heritage sites or places. This initial survey was completed in 2021. An Additional ethnographic survey and consultation was requested by the Environmental Protection Authority (EPA) in 2022 to discuss, revise and respond to recommendations from the previous heritage survey. In particular, the importance of any identified sites relating to women's cultural practice.

The previous heritage survey activities identified seven heritage sites within the AHP-1 project area. These identified heritage sites will be avoided during construction and operations

## **7. Consultation**

The format for the site survey followed the same rigorous format as the previous site visits and heritage surveys. The survey participants were collected from their homes in Geraldton and then assembled and briefed at a meeting place in Geraldton.

The project requirements including the nature of the consultation, that supplemented the previous heritage survey findings and the nature of the proposed survey was explained to the survey group. The team then assembled at the site, where a site inspection was undertaken. The team visited key development areas and then stopped to discuss heritage aspects and values at each proposed infrastructure location, including the solar array site, turbine plant and Hydrogen processing area. The YSRC participants affirmed they understood the nature of the consultation and the survey obligations.



Figure 3: Group 1 YSRC site consultation



Figure 4: Group 2 YSRC site consultation



Figure 4: The group 5 site inspection team

Figure 5 : The group 4 site inspection team



## 8. Yamatji People Consultation

### Consultant: Sticks and Stones 2023

Sticks and Stones heritage consultants completed a follow-up heritage survey in April 2023 including Identifying women's heritage, ethnographic values, and women's cultural practice within the project site

The Consultation was undertaken over three days with two separate Yamatji groups that included women and men in each of the groups.

## 9. Update Focus

The previous Aboriginal heritage survey report had a strong focus on the archaeology of the surveyed area, with little discussion regarding the ethnographic aspects or findings. This updated survey focused on the ethnographic aspects of the survey area

Further survey requirements included: Discussing the Ethnographic importance of the area to Traditional Owners and relevant Knowledge Holders.

A discussion on the results of the ethnographic survey. In particular, the importance of any identified sites important to women's cultural practice were considered as the initial survey was undertaken by Yamatji men only.

## 10. Ethnographic Survey Methods and outcomes

Consistent with the methodology and philosophy of ethnographic surveys, the main focus was on total landscapes, and cultural sites within these landscapes that may have significance to Traditional Owners, rather than on archaeological sites *per se*.

The survey involved discussing the activities proposed by IGE at the AHP-1 project area and consultation with the YSRC representatives regarding the Aboriginal heritage values within the proposed development envelope. General discussion included traditional stories, histories, song lines and the totemic landscape including the importance of women's cultural practices relating to the surrounding country within context.

With these considerations in mind, an 'Aboriginal site' based on ethnography is defined as the following:

The ethnographic interest relates to the potential of contributing to understandings of Yamatji lifeways in the region. All recorded sites during this program can be considered related by spatial proximity; to all other sites with water components by environmental similarities; and to all other sites within Yamatji lands as part of the cultural landscape.

## 11. Archaeological Aboriginal sites

Most Aboriginal sites within the Mid-West region have been identified and registered as a result of cultural resource management surveys. Consequently, only those areas slated for future developments have been comprehensively surveyed for places of cultural significance. This is clearly illustrated by the distribution of Aboriginal sites and heritage places held by the DPLH(DPLH 2021).

A review of sites held by the DPLH, also highlights the importance of water sources to the Yamatji People with most sites located on major water sources including the Murchison, Hutt, Hill, Moore, Irwin, Greenough and Gascoyne rivers and permanent lakes such as Mongers, Moore, and Yaya Yara (ibid.). Heritage sites within the AHP-1 development envelope are clustered around the wetlands in the north East including Arramall lake as shown in Figure 1.

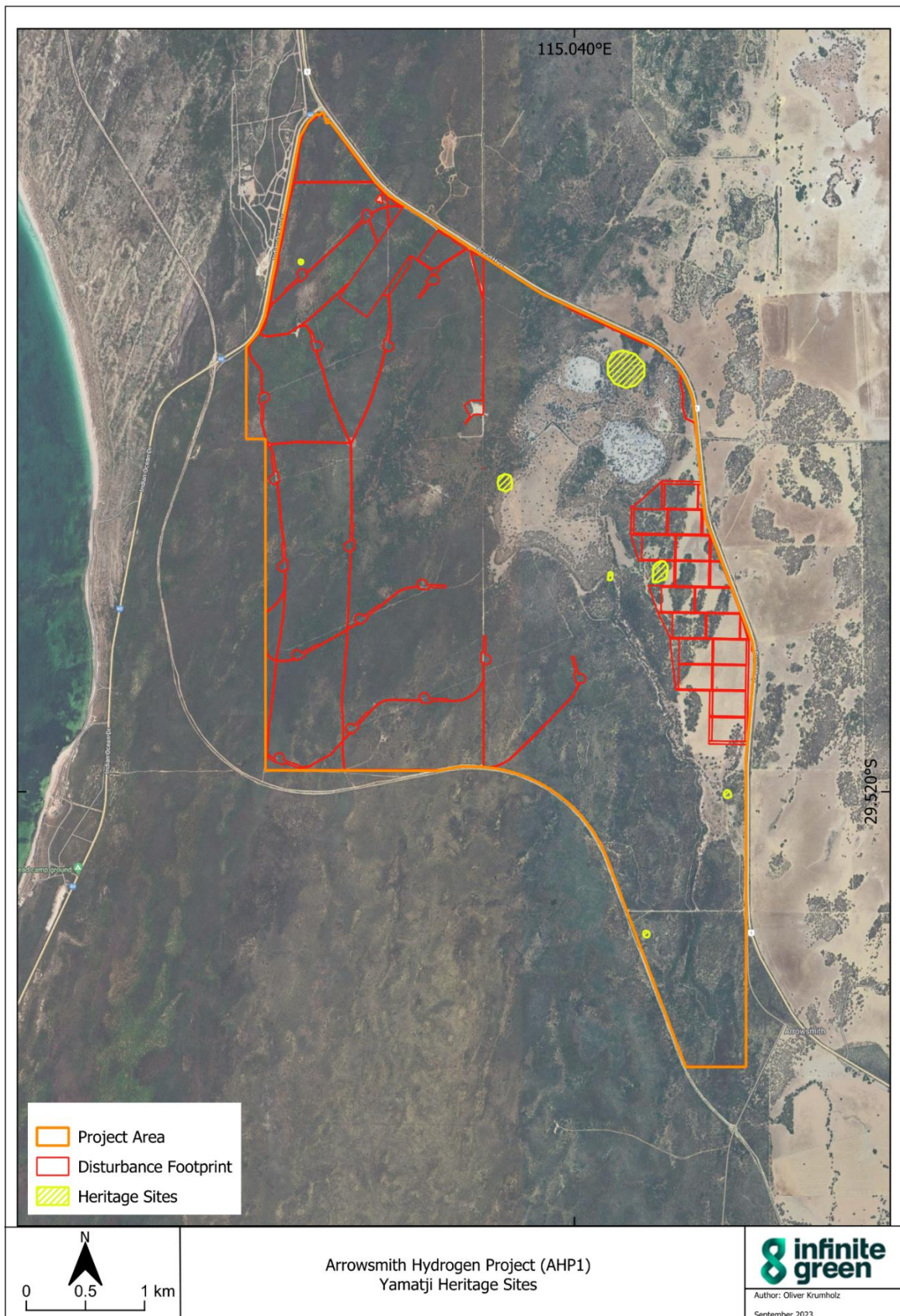


Figure 1 Yamatji Heritage sites (Previous Project Site Layout)



Figure 2 Yamatji Heritage sites (Project Site Update)

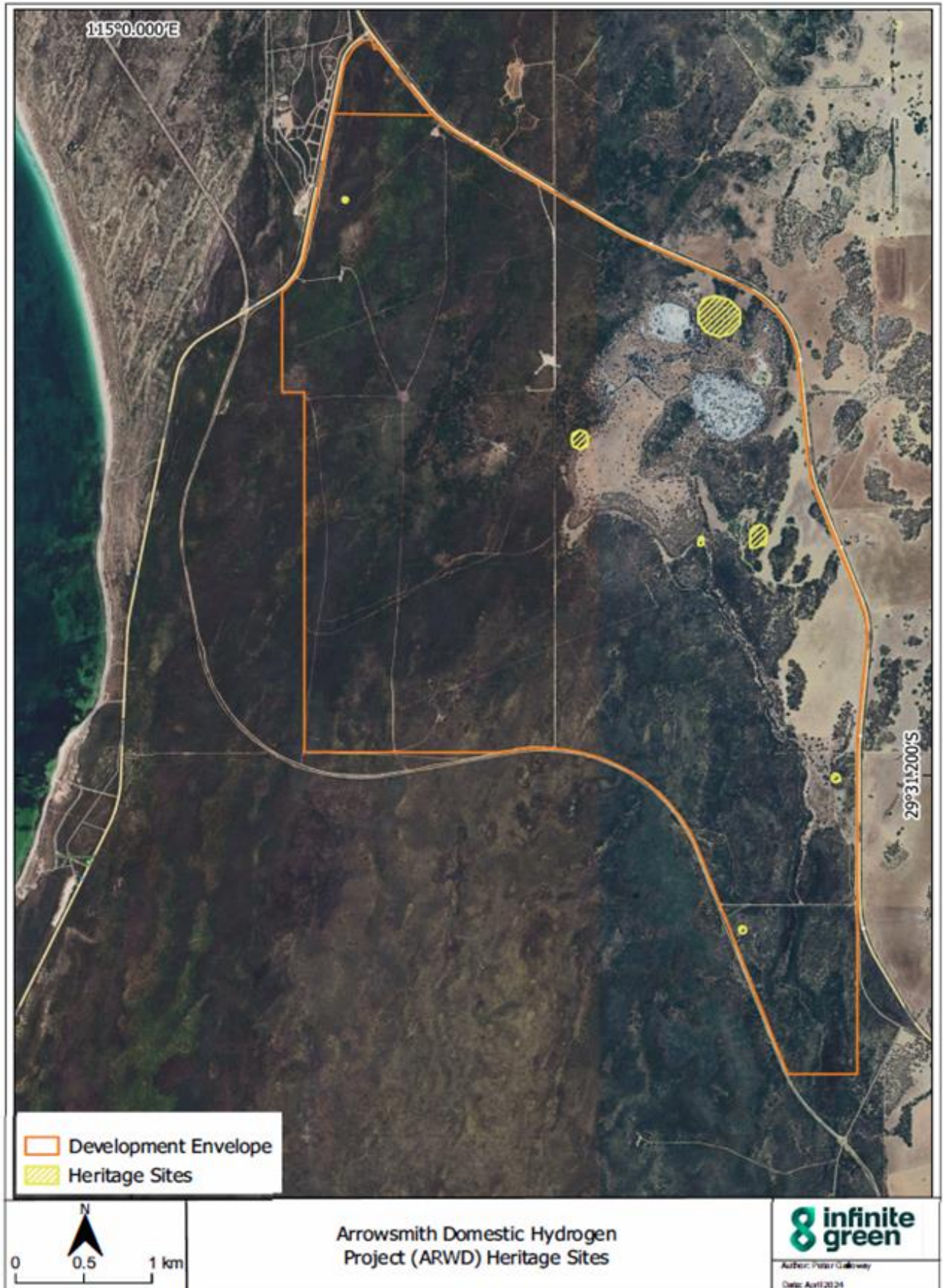


Figure 3 Yamatji Heritage sites

## 12. Ethnographic Importance

Primarily, this place is of importance and significance to the Yamatji people with a particular emphasis on those connected to the Dongara area. In general terms all Aboriginal sites located within Yamatji lands are of cultural importance to the Yamatji people.

Aboriginal sites located on the AHP-1 development envelope represent a connection to the past that are used to define origins of the Yamatji people. Due to increased industrial activity within this area, the remaining heritage values increase in importance and resource, as their rarity increases.

This place is also of importance upon the basis of tradition and historical association. This site may contribute to understandings of the coastal desert region in terms of resource exploitation, population movement, and trade.

Place by place type similarities linked to all other sites within Yamatji lands are part of the material cultural landscape.

Archaeological evidence and ethnographic data confirm the importance of fresh reliable water for hunting, gathering, births and burials. The lakes and wetlands of the Swan Coastal Plain clearly provided an abundant supply of food and resources for the Aboriginal People.

The records of the early settlers (Hammond 1933; Grey 1841) indicate that the chain of lakes which extended from Geraldton to Mandurah formed a major highway of movement for people along which a rich social and ceremonial life was enacted at the appropriate time of year.

## 13. Contemporary Context

Spiritual connections are just as important now as they were in the past, Yamatji people today maintain a watching brief over their traditional lands. They continue to hunt and gather bush food, continue to pass on knowledge to the younger generations, and continue to revisit certain locales for spiritual refreshment and to look after the land.

There are continuing associations between Yamatji families and the areas where they have lived for generations, as well as their homelands. They still consider waterways as highly significant and continue to pass on cultural knowledge to the younger generations to maintain cultural practices, such as hunting for turtles and jilgies.

It is noted that ethnographies are related to the scientific description of peoples and cultures within their customs, habits, and mutual differences and aesthetic values and can be subjective. Personal assessment rather than a quantifiable value used for meaningful comparative analysis is part of the traditional culture. Furthermore, applications of mid-range theory to objects from different cultural, geographical and time periods are of limited value (see Johnson 2009)

### **Recommendation 1**

*The project area has potential for subsurface Aboriginal sites:*

- *A clearing monitoring program will be adopted as a response to this potential*
- *Earthworks and clearing activities will be undertaken outside of known heritage areas*
- *Monitoring and inspections during earthworks and clearing activities (Including traditional owner observers) will be implemented and the Yamatji people will be informed immediately of heritage material discoveries.*
- **Recommendation 2**
- *Section 18 application under the Aboriginal Heritage Act 1972 may be required by IGE should they wish to disturb any of the heritage sites and features within the survey area.*

IGE will avoid disturbance of the seven demarcated heritage sites within the project development envelope or surrounds. (See figure 1)

### **Recommendation 3**

*The Southern Yamatji representatives recommendations:*

- *The recorded heritage places should be avoided. (No construction activity within the heritage places exclusion zones)*
- *No further research required on the caves, mounds (PADs) and stone arrangements. (The 2023 survey consultation and site walk concluded there was no more action required for further research)*
- *Southern Yamatji monitors are present for the ground disturbance work.*

*The Yamatji people have been invited to participate and monitor all Ground disturbance and clearing activities.*

## 14. Outcomes

The consultation was completed with full involvement of, and cooperation from, the Yamatji Nation representatives. Yamatji Marlpa Aboriginal Corporation (YMAC) representatives were involved in the consultation planning, were updated about the progress, and the results of the consultation were discussed. This collaborative approach results in no misunderstanding regarding the recommendations set out below:

The Yamatji Nation Indigenous survey participants provided consistent messaging during the consultation.

The participants stated:

- The area is a place of desirable plant resources for the Yamatji people as foods, medicines, and decorative features.
- Women's cultural practice was considered during the survey and there were no particular ethnographic findings.
- Women's cultural practice was discussed
  
- The previously identified heritage features are of importance to the Yamatji people and access to these areas should be restricted by physical and administrative tools.
  
- The works area retains general importance to the Yamatji people as a place where their ancestors camped, travelled, and gathered resources.

No specific use or significance was attributed to the site generally, however the area has been, and continues to be used, as a place where Yamatji people live, camp, hunt and travel. Recreational activities utilising the seasonal water resources are a regular feature of Yamatji community members' lives within the area.

## 15. Women's Cultural Practice

The Yamatji women provided evidence that women's knowledges is essential to supporting their families and their communities. Women's knowledges is critical to raising children, supporting young people through early childhood and into adulthood, by maintaining social cohesion, healing people from trauma and illness, and caring for the land, waters, and flora and fauna.

Throughout the Yamatji Stakeholder engagements, there were concern that many elements of culture and traditional law that maintained these knowledge systems were being eroded and lost to the older generations. There was also strong evidence that women and girls were counteracting this cultural loss with a resurgence of ceremony and language including active practices and the reacquisition of intimate cultural knowledge regarding relationships with kin and country.

Women and girls spoke of the importance of engaging with elders as part of this resurgence and re-learning cultural laws and knowledge across the region.

Senior Yamatji women described how they are applying their knowledges across diverse cultural sectors and fields including the arts, health, academia, and business. Furthermore with the real threat and present impacts of climate change, Yamatji women are now using their intimate knowledge of country to understand impacts upon ecological systems, to protect biodiversity, and are innovating to mitigate and adapt to new climate challenges.

First Nations women stressed that protecting and restoring their extensive knowledge systems are key to developing their own self determined social support networks, structures, and economies, This was communicated as being vital to their positive health and wellbeing going forward. (Australian Human Rights Commission 2022)

Following the field trip a debrief was conducted to discuss the results of the heritage survey, and to offer the Traditional Owners an opportunity to provide additional comments on the heritage places identified, the effectiveness of the methods used, and provide their recommendations for the management of cultural heritage values in the area.

## 16. Requests

Through discussion between the Yamatji participants and IGE, the following requests were presented:

- Access is afforded for Yamatji people to continue to use and enjoy the area conditional of relevant health and safety conditions.
- The identified heritage sites are to be avoided by the project and access to the cave locations is restricted through fencing demarcation and signage.
- The opportunity for a collaborative decorative indigenous design to be placed on the wind turbine blades and masts is continued to be pursued by both parties.

Should further information be required, please contact Daniel Puletama at [daniel.puletama@sandscrm.com](mailto:daniel.puletama@sandscrm.com).

## 17. Coordinate Capture

All coordinates provided in this report and in the spatial data package accompanying it (Appendix 1) were obtained with a *Spatial data captured for any archaeological sites in this report has been obtained by using a hand-held GPS unit using the GDA94 coordinate system.*

All grid references are projected in MGA Zone 50, unless otherwise stated. Dependent on external conditions, these units afford an optimal spatial accuracy of  $\pm 5$

## References

- Australian Human Rights Commission Submission (2022). Indigenous Women and the Development, Application, Preservation and Transmission of Scientific Knowledge. Special Rapporteur on the Rights of Indigenous Peoples
- Barber, M. and Jackson, S. (2011). Indigenous water values and water planning
- Bimara (Green 2001; Shaw and ... Radcliffe–Brown referred to the Rainbow-Serpent as Warlu including mythical water snakes.
- Department of Planning, Lands and Heritage 2019, Aboriginal Heritage Inquiry System, viewed 3 May 2021, <http://maps.dia.wa.gov.au/AHIS2/>
- Hammond J. (1933, quoted in Quartermaine et al 2001). Winjan's People: the story of the South-Western Aborigines. Imperial Printing, Perth.
- Johnson (2009). Aboriginal Ethnography in Australia. University press
- Transparency International Australia (2022) 'What does the Energy Transition mean for the Mining Sector?' Available at <https://mining.transparency.org.au/publications/what-does-the-energy-transition-mean-for-the-mining-sector/>

## Legislation

- Aboriginal and Torres Strait Islander Heritage Protection Act 1984* (Commonwealth of Australia), viewed 3 May 2021, <http://www.comlaw.gov.au/Details/C2010C00807>
- Aboriginal Heritage Act 1972* (Western Australia), viewed 3 May 2021, [http://www.austlii.edu.au/au/legis/wa/consol\\_act/aha1972164/](http://www.austlii.edu.au/au/legis/wa/consol_act/aha1972164/)

Appendix 1

Survey Spatial Data

SITE_ID	DIA ID	SITE_TYPE	BOUNDARY	EASTING	NORTHING	RECORD LEVEL	SIGNIFICANCE
			Complete/Partial			Site ID/Site Avoidance	Low /Medium/High
IBE_21_001		Water Source	Complete	311334.907	6732801.744	Site Avoidance	Medium
IBE_21_002		Stone Arrangement	Complete	310733.318	6734660.641	Site Avoidance	Medium
IBE_21_003		PAD	Complete	307652.028	6737213.477	Site Avoidance	Medium
IBE_21_004		PAD	Complete	310668.452	6731613.913	Site Avoidance	Medium
IBE_21_005		Stone Arrangement	Complete	310313.182	6734616.617	Site Avoidance	Medium
IBE_21_006		Rock Shelter	Complete	310414.829	6736358.953	Site Avoidance	Medium
IBE_21_007		Rock Shelter	Complete	309409.100	6735386.837	Site Avoidance	Medium

ARCHAEOLOGIST	DATE RECORDED	CLIENT	SCOPE OF WORK	ABORIGINAL GROUP	Perimeter	Area	Hectares	Major Axis	Minor Axis
Bob Sheppard	29/07/2021	IGE	IGE Arrowsmith Survey	SYRC	205.944	3090.566	0.309	66.759	58.857
Bob Sheppard	29/07/2021	IGE	IGE Arrowsmith Survey	SYRC	518.251	17995.879	1.800	184.521	124.211
Bob Sheppard	29/07/2021	IGE	IGE Arrowsmith Survey	SYRC	127.947	1222.967	0.122	41.127	37.955
Bob Sheppard	29/07/2021	IGE	IGE Arrowsmith Survey	SYRC	175.535	2361.042	0.236	57.744	52.104
Bob Sheppard	29/07/2021	IGE	IGE Arrowsmith Survey	SYRC	186.958	2130.227	0.213	72.919	37.157
Bob Sheppard	29/07/2021	IGE	IGE Arrowsmith Survey	SYRC	988.397	74536.148	7.454	323.607	293.067
Bob Sheppard	29/07/2021	IGE	IGE Arrowsmith Survey	SYRC	434.552	13919.410	1.392	142.016	124.503

