

Karara Iron Ore Project – Mine Life Extension

Proposal Content Document

Table 1: General proposal content description

Proposal title	Karara Iron Ore Project – Mine Life Extension (KIOP MLE)
Proponent name	Karara Mining Limited (KML)
Short description	<p>This Proposal is to revise the existing Karara Iron Ore Mine (KIOP), located 320 km north-northeast of Perth in the Midwest Region of Western Australia to include a Mine Life Extension (MLE).</p> <p>The Proposal includes an expansion to the development envelope, extension of the tailings storage facility and waste rock dump at the existing KIOP (MS 805) and incorporation of areas approved under MIOIP (MS 806), which will be utilized for the ongoing operations at Karara.</p>

Table 2: Proposal content elements

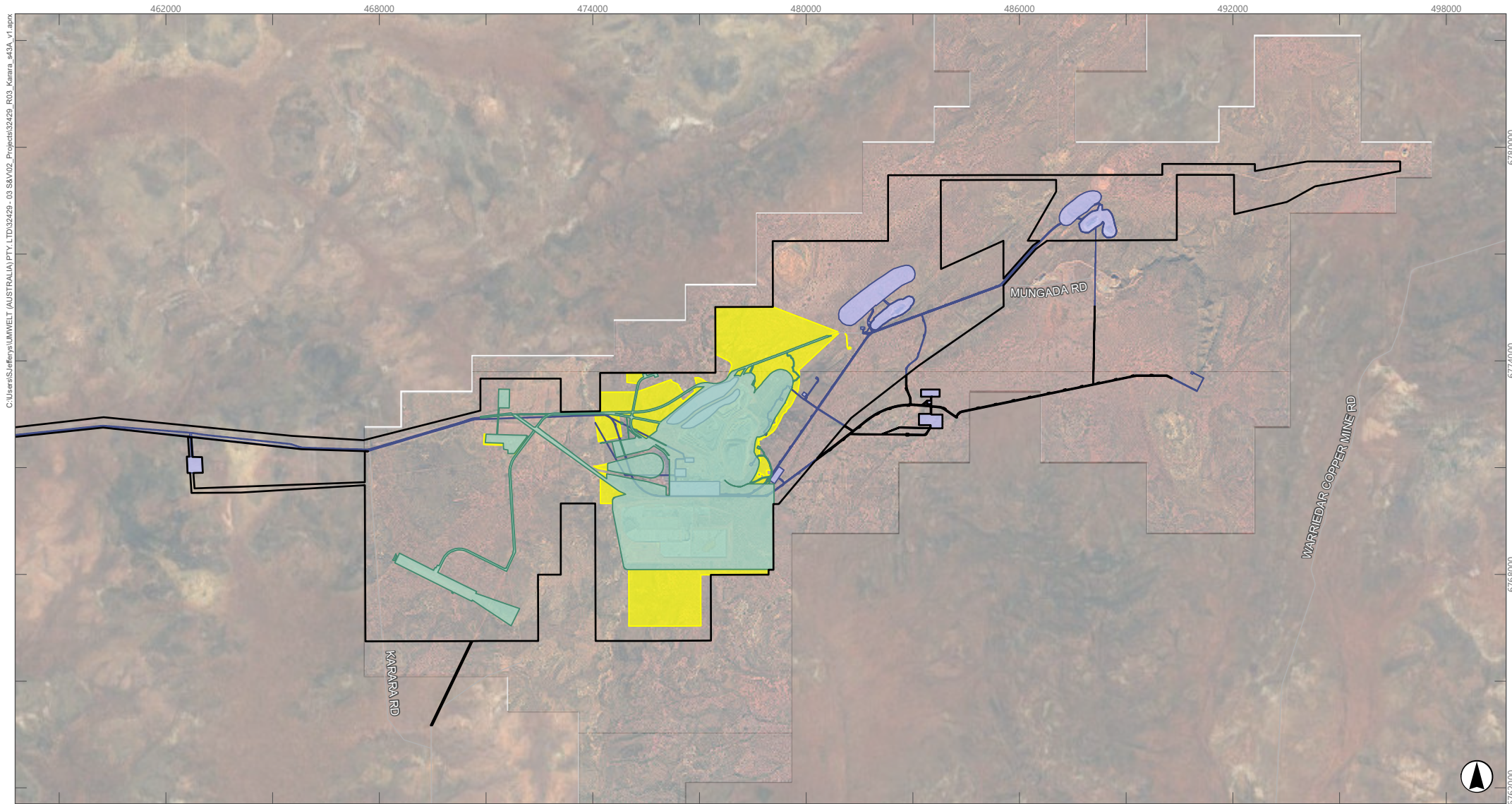
Proposal element	Location	Existing extent for approved proposals (MS 805 and MS 806)	Proposed MLE extent	Combined Proposal maximum extent
Physical elements				
Development envelope	Figures 1 to 3	Not defined	New element	Up to 13,481 ha
Area of disturbance	Figures 1 to 3	MS 805: 3,027 ha MS 806: 1,059.35 ha	1,186.3 ha new disturbance, of which 1,184.8 ha is native vegetation Removal of 568 ha of disturbance from MS 805 and MS 806.	Up to 4,698 ha
Pit dimensions	Figure 2	<ul style="list-style-type: none"> Karara: Approx. 3,400 m long, 1,300 m wide, 300 m deep Blue Hills North: 1,390 m long, 360 m wide, 133 m deep 	No change	Total combined pits 366 ha <ul style="list-style-type: none"> Karara: max 3,400 m long, max 1,300 m wide, average 300 m deep below natural ground level

		<ul style="list-style-type: none"> • Terapod: 1,440m long, 360 m wide, 140 m deep 		<ul style="list-style-type: none"> • Blue Hills North: 1,390 m long, 360 m wide, 133 m deep • Terapod: 1,440 m long, 360 m wide, 140 m deep
Waste rock dump (WRD)	Figure 2	MS 805: 365 ha MS 806: 193 ha (includes ROM and WRD)	Additional 179 ha for KIOP	<p>KIOP WRD:</p> <ul style="list-style-type: none"> • 544 ha • Max height 450 mAHD (106 m above ground level). <p>MIOP WRDs and ROM pads:</p> <ul style="list-style-type: none"> • Blue Hills North: 135 ha • Terapod: 58 ha
Tailings storage facility (TSF)	Figure 2	Area not defined	Additional 261 ha for KIOP	<p>KIOP TSF:</p> <ul style="list-style-type: none"> • 860 ha • Max height 402 mAHD
Site infrastructure	Figures 2 and 3	<ul style="list-style-type: none"> • Processing plant • ROM pad • Bulk fuel storage and refuelling pads • Explosive compound and magazine • Wastewater treatment facility • Reverse osmosis plant • Landfill • Air strip • Borefields • Powerline 	<p>New infrastructure areas surrounding the WRD and TSF expansion areas at KIOP.</p> <p>New infrastructure area for the abandonment bund adjacent to the pit at KIOP.</p> <p>Incorporate infrastructure approved under MIOP to support ongoing operations at KIOP.</p>	Combined infrastructure approximately 2,736 ha

		<ul style="list-style-type: none"> • Rail siding • Site access 		
Operational elements				
Pit stages and concentrate production rate	NA	MS 805: Stages 2-5, up to approx. 37.6 Mtpa (Stages 4 & 5) MS 806: Stages 1-2, approx. 3 Mtpa	Include additional stages 6-8 with a reduction in concentrate production rate by up to approx. 29.4 Mtpa.	Stage 2 to Stage 8: approx. 8.2 Mtpa of concentrate
Waste rock volumes	NA	MS 805: approx. 37.6 Mtpa MS 806: Not defined	Increase total waste rock volume by approx. 245 Mt.	Stage 2 to Stage 8: approx. 17 Mtpa. Over the Life of mine: approx. 462 Mt.
Dewatering	NA	MS 805: peak 1,300 kL/day [475 MLpa] MS 806: 0.72 GLpa [720 MLpa]	Increase of peak dewatering rate by 400 kL/day [145 MLpa]. This higher dewatering rate is expected to be required for about 5 years.	Dewatering flow rate up to approx. 0.6 GLpa to end of mine life
Proposal elements with greenhouse gas emissions				
Construction: The amendment is continuing operations, so there are no specific construction activities.				
Operation:				
Scope 1	Fuel combustion, rail haulage, land clearing	Not defined	Total 1,722,936 tonnes CO ₂ -e (2024–2053) Peak annual 143,653 tpa CO ₂ -e	Total 1,722,936 tonnes CO ₂ -e (2024–2053) Peak annual 143,653 tpa CO ₂ -e
Scope 2	Electricity	Not defined	Total 3,284,721 tonnes CO ₂ -e (2024–2053) Peak annual 265,000 tpa CO ₂ -e	Total 3,284,721 tonnes CO ₂ -e (2024–2053) Peak annual 265,000 tpa CO ₂ -e
Scope 3	Purchased goods and services, downstream transport,	Not defined	Total 353,766,597 tonnes CO ₂ -e (2024–2053) Peak annual 12,184,227 tpa CO ₂ -e	Total 353,766,597 tonnes CO ₂ -e (2024–2053)

	processing of products			Peak annual 12,184,227 tpa CO ₂ - e
Rehabilitation				
Rehabilitation will be undertaken in accordance with KML environmental procedures: Land Rehabilitation (CORP-EN-PRO-1002), Rehabilitation Performance Monitoring (CORP-EN-PRO-1040), Rehabilitation Schedule (CORP-EN-SCH-1006) and Mine Closure Plan (CORP-EN-PLN-1038).				
Commissioning				
Commissioning of the mine infrastructure are subject to the operational limits above. Construction and commissioning were completed as part of the Karara Iron Ore Project. The Mine Life Extension is for ongoing operations.				
Decommissioning				
Decommissioning of mine infrastructure will be managed through KML's Mine Closure Plan (CORP-EN-PLN-1038).				
Other elements which affect extent of effects on the environment				
Proposal time*	Maximum project life	MS 805: 25 years (commenced in 2010) MS 806: 10 years	Additional 21 years	About 46 years (completion of closure implementation by 2055)
	Construction phase	Not specified	No change	0 years
	Operations phase	Not specified	Additional 21 years	44 years (2010 to 2053)
	Decommissioning phase	Not specified	No change	3 years (2053 to 2055)

* Proponents should only provide realistic timeframes to avoid unnecessary change to proposal applications at referral (section 38C), assessment (section 43A) or post assessment (section 45C).



C:\Users\SJefferys\Umwelt (AUSTRALIA) PTY. LTD\32429 - 03 S3V\02 - Projects\32429_R03_Kamera_s43A_V1.aprx

Legend

- Combined Proposal Mitigated Disturbance Envelope
- Approved under KIOP (MS 805)
- Approved under MIOP (MS 806)
- Mine Life Extension (KIOP MLE) Mitigated Disturbance Footprint

Scale: 1:150,000 at A4, GDA2020 MGA Zone 50

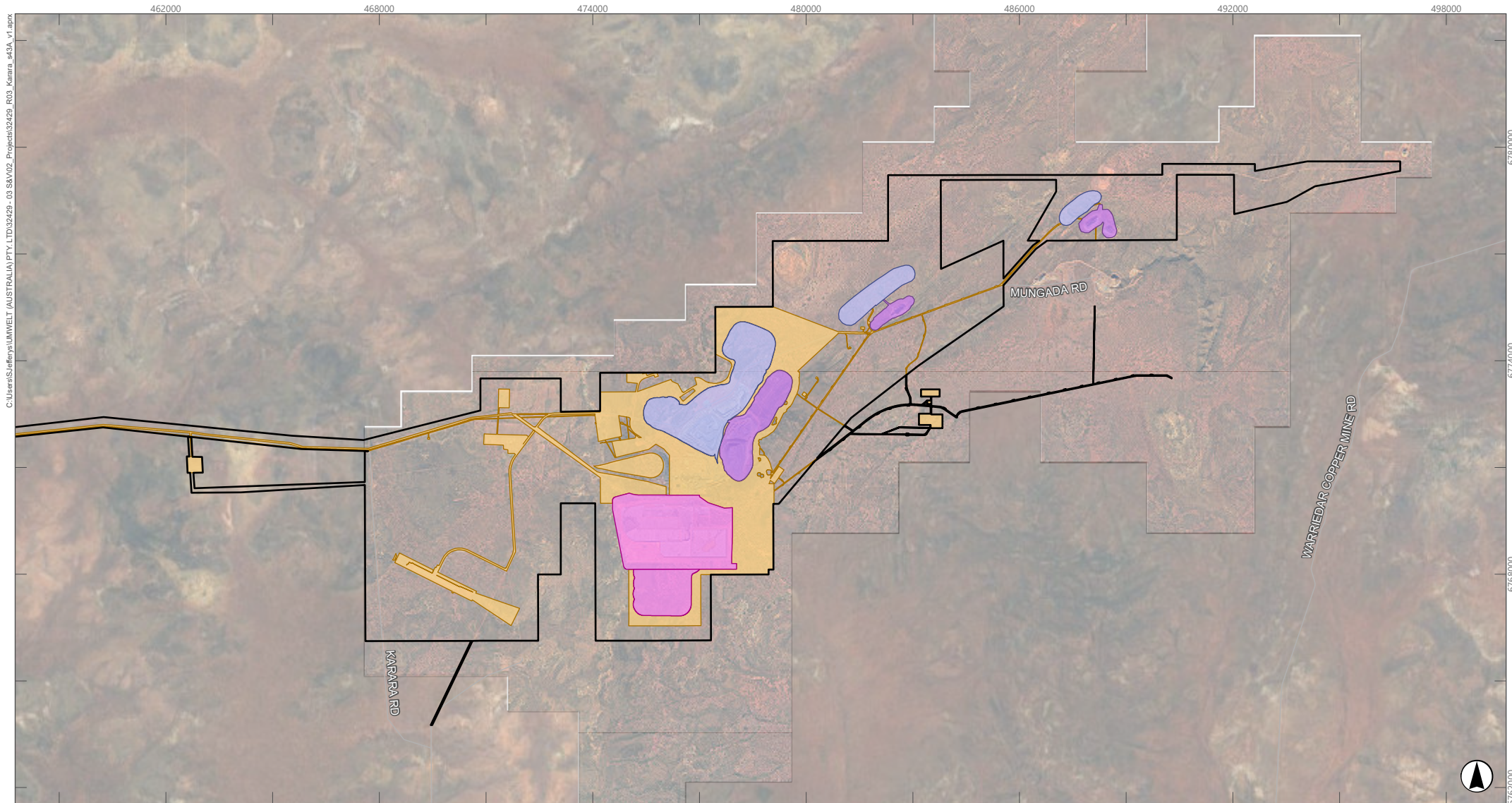
FIGURE 1
Combined Proposal Development Envelope with MS 805, MS 806 and New Disturbance Footprint – Mine Area

This document and the information are subject to Terms and Conditions and Umwelt (Australia) Pty Ltd ("Umwelt") Copyright in the drawings, information and data recorded ("the information") is the property of Umwelt. This document and the information are solely for the use of the authorized recipient and this document may not be used, copied or reproduced in whole or part for any purpose other than that which it was supplied by Umwelt. Umwelt makes no representation, undertakes no duty and accepts no responsibility to any third party who may use or rely upon this document or the information. APPROVED FOR AND ON BEHALF OF Umwelt.



Image Source: KML (2024), ESRI Basemap (2025) | Data Source: Landgate (2025), KML (2025)





Scale: 1:150,000 at A4, GDA2020 MGA Zone 50

Legend

Combined Proposal Mitigated Development Envelope

Combined Proposal Mitigated Disturbance Footprint

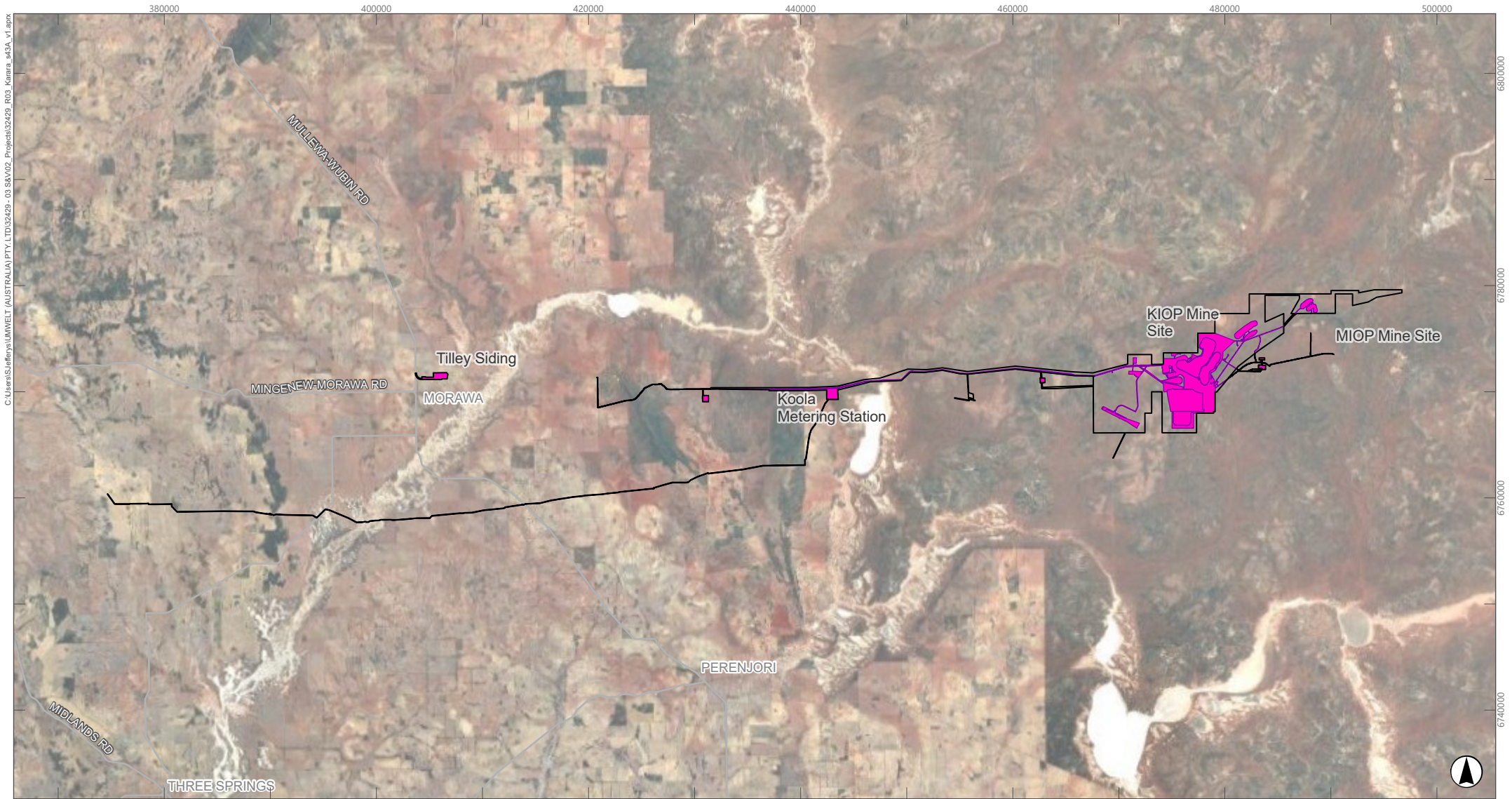
- Infrastructure
- Pit
- TSF
- WRD

FIGURE 2
Combined Proposal Development Envelope and Disturbance Footprint – Mine Area

This document and the information are subject to Terms and Conditions and Umwelt (Australia) Pty Ltd ("Umwelt") Copyright in the drawings, information and data recorded ("the information") is the property of Umwelt. This document and the information are solely for the use of the authorized recipient and this document may not be used, copied or reproduced in whole or part for any purpose other than that which it was supplied by Umwelt. Umwelt makes no representation, undertakes no duty and accepts no responsibility to any third party who may use or rely upon this document or the information. APPROVED FOR AND ON BEHALF OF Umwelt.



Image Source: KML (2024), ESRI Basemap (2025) | Data Source: Landgate (2025), KML (2025)






- Legend**
-  Combined Proposal Mitigated Development Envelope
 -  Combined Proposal Mitigated Disturbance Footprint
 -  Main Road

FIGURE 3
 Combined Proposal Development Envelope and Disturbance Footprint - Mine Area and Regional Infrastructure

This document and the information are subject to Terms and Conditions and Umwelt (Australia) Pty Ltd ("Umwelt") Copyright in the drawings, information and data recorded ("the information") is the property of Umwelt. This document and the information are solely for the use of the authorized recipient and this document may not be used, copied or reproduced in whole or part for any purpose other than that which it was supplied by Umwelt. Umwelt makes no representation, undertakes no duty and accepts no responsibility to any third party who may use or rely upon this document or the information. APPROVED FOR AND ON BEHALF OF Umwelt.



Image Source: ESRI Basemap (2024) | Data Source: Landgate (2022, 2025), DBCA (2025), Umwelt (2025)