



Ass # 590

Bull # 574

State # 208

WESTERN AUSTRALIA
MINISTER FOR THE ENVIRONMENT

**STATEMENT THAT A PROPOSAL MAY BE IMPLEMENTED
(PURSUANT TO THE PROVISIONS OF THE
ENVIRONMENTAL PROTECTION ACT 1986)**

MESA J IRON ORE DEVELOPMENT, PANNAWONICA (590)

ROBE RIVER IRON ASSOCIATES

This proposal may be implemented subject to the following conditions:

1 Proponent Commitments

In implementing the proposal, the proponent shall fulfil the commitments (which are not inconsistent with the conditions or procedures contained in this statement) made in the proponent's Consultative Environmental Review (a copy of the commitments is attached).

2 Implementation

Subject to these conditions, the manner of detailed implementation of the proposal shall conform in substance with that set out in any designs, specifications, plans or other technical material submitted by the proponent to the Environmental Protection Authority with the proposal. Where, in the course of that detailed implementation, the proponent seeks to change those designs, specifications, plans or other technical material in any way that the Minister for the Environment determines on the advice of the Environmental Protection Authority, is not substantial, those changes may be effected.

3 Environmentally Significant Areas

The Robe River - Jimmawurrada Creek environment, its vegetation, water levels and water quality, and particularly the permanent pools of the Robe River, are to be protected from unacceptable direct and indirect impacts by this project during the life of the project, recognising the requirements of mining and ore transport. This includes but is not necessarily limited to the following requirements:

1. Mining and other activities associated with the project shall be excluded from those areas of the Mesa J escarpment along the Robe River as delineated on the sketch plan of September 1991 prepared by the proponent and attached to this Statement; and
2. The alignment of the rail route from Mesa K to Mesa J shall utilise the Jimmawurrada Creek escarpment and not the creek bed, and accordingly shall be rail alignment option 2 as identified by the proponent in Addendum "A" to the Consultative Environmental Review.

4 Drainage Management

The Robe River - Jimmawurrada Creek system needs to be protected from pollution and unacceptable sedimentation, recognising the requirements of mining and ore transport.

Published on

16 JAN 1992

4-1 Prior to construction at the site, the proponent shall prepare a Drainage Management Programme, to protect the Robe River - Jimmawurrada Creek system from the deleterious impacts of sedimentation and pollution from the project, to the satisfaction of the Minister for the Environment on advice of the Environmental Protection Authority, the Department of Conservation and Land Management and the Water Authority of Western Australia. The plan is to include but is not necessarily limited to:

1. a monitoring programme to detect impacts;
2. procedures for protecting the ecology of the system;
3. procedures for reporting on the programme; and
4. a commitment to ameliorate environmental impacts to the satisfaction of the Environmental Protection Authority if impacts are detected which are deemed unacceptable by the Environmental Protection Authority.

4-2 Subsequent to condition 4-1, the proponent shall implement the approved Drainage Management Programme to the satisfaction of the Environmental Protection Authority on advice of the Water Authority of Western Australia and the Department of Conservation and Land Management.

5 Dewatering Management

The permanent pools and vegetation of the Robe River - Jimmawurrada Creek system are to be protected from unacceptable environmental impacts, recognising the requirements of mining and ore transport.

5-1 Prior to the commencement of dewatering, the proponent shall prepare a Dewatering Management Programme, to protect the Robe River - Jimmawurrada Creek system, to the satisfaction of the Environmental Protection Authority on advice of the Department of Conservation and Land Management and the Water Authority of Western Australia. The plan is to include but is not necessarily limited to:

1. a monitoring programme to detect impacts;
2. procedures for protecting the ecology and water quality of the permanent pools and associated vegetation;
3. procedures for reporting on the programme; and
4. a commitment to ameliorate environmental impacts to the satisfaction of the Environmental Protection Authority if impacts are detected which are deemed unacceptable by the Environmental Protection Authority.

5-2 Subsequent to condition 5-1, the proponent shall implement the approved Environmental Management Programme to the satisfaction of the Environmental Protection Authority on advice of the Water Authority of Western Australia and the Department of Conservation and Land Management.

6 Rehabilitation

Rehabilitation is an integral part of the project and requires management throughout the life of the project.

6-1 Within 12 months of the date of this statement, the proponent shall prepare a Rehabilitation Management Programme to the satisfaction of the Environmental Protection Authority on advice of the Department of Mines and the Department of Conservation and Land Management. The programme shall include but not necessarily be limited to:

1. proposals for rehabilitation of the project area; and
 2. a monitoring programme to determine success of the rehabilitation.
- 6-2 The initial programme shall be submitted to the Environmental Protection Authority, with subsequent programmes for the project to be updated annually in conjunction with reporting requirements under the Iron Ore (Robe River) Agreement Act.
- 6-3 At least twelve months prior to decommissioning, the proponent shall prepare a plan for decommissioning and rehabilitating the site, to the satisfaction of the Environmental Protection Authority on advice of the Department of Mines and the Department of Conservation and Land Management.
- 6-4 Subsequent to conditions 6-1 and 6-3, the proponent shall implement the approved programmes for rehabilitating and decommissioning the site, to the satisfaction of the Environmental Protection Authority on advice of the Department of Mines and the Department of Conservation and Land Management.

7 Environmental Management Programme

A comprehensive management programme for the project should be prepared to integrate the various components referred to in conditions 4, 5 and 6 above. This will allow reporting for the various aspects of the project to be done in one document.

- 7-1 Prior to construction, the proponent shall prepare an interim report outlining the key components of a comprehensive environmental management programme to the satisfaction of the Minister for the Environment on advice of the Environmental Protection Authority. The programme shall include but not necessarily be limited to:
1. drainage;
 2. rehabilitation; and
 3. dewatering.
- 7-2 Subsequent to condition 7-1 and prior to the commencement of mining, the proponent shall prepare a comprehensive environmental management programme to the satisfaction of the Minister for the Environment on advice of the Environmental Protection Authority. Whilst initial reporting would be to the Environmental Protection Authority, future reporting could be done under the Iron Ore (Robe River) Agreement Act. The programme shall include but not necessarily be limited to:
1. the plan for drainage management required by condition 4-1;
 2. the plan for rehabilitation required by condition 6-1; and
 3. a status report on the plan for dewatering management as per condition 5-1.

8 Proponent

Prior to any transfer of ownership, control or management of the project being effected which would give rise to the need for the replacement of the proponent, the Minister for the Environment shall be advised of the name and details of the transferee and invited to nominate a replacement proponent.

If the Minister nominates a replacement proponent, a copy of this statement endorsed with an undertaking by the replacement proponent to carry out the project in accordance with the conditions and procedures set out in the statement shall be

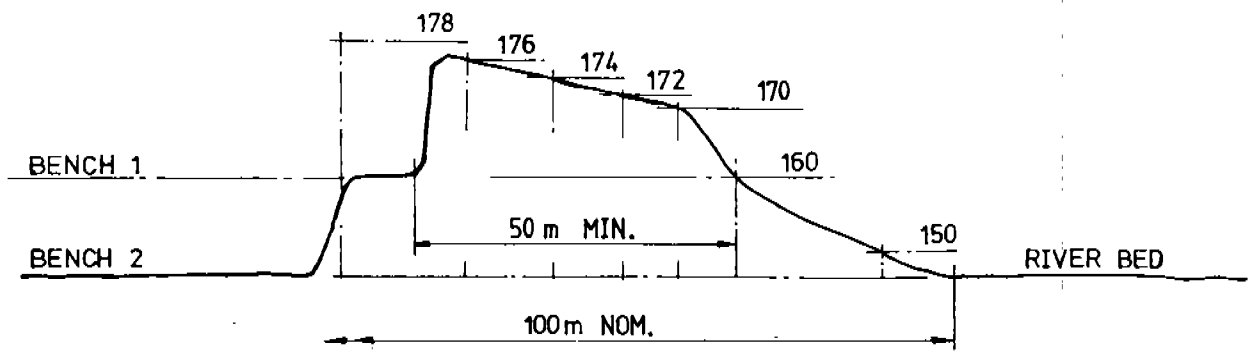
delivered to the Minister and thereupon the former proponent shall be released from the conditions of this statement to the extent of its interest transferred.

9 Time limit on approval

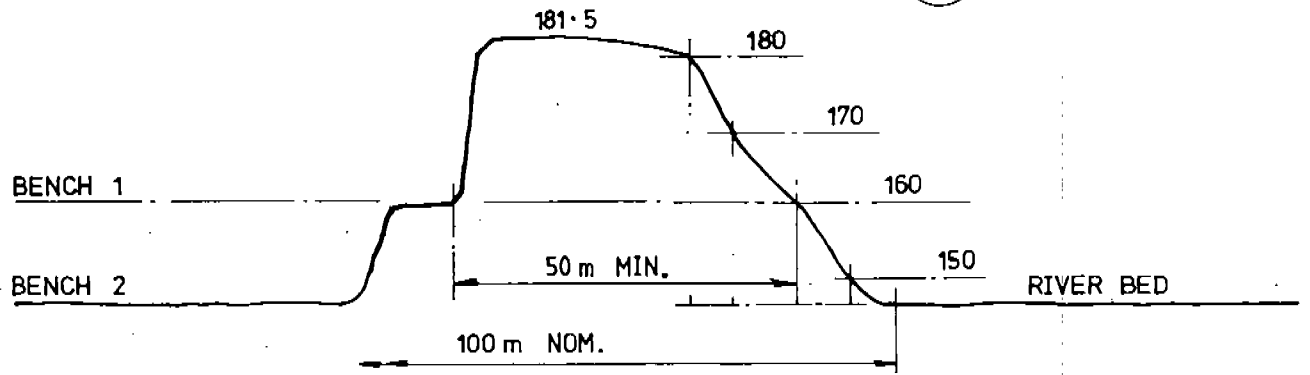
If the proponent has not substantially commenced the project within five years of the date of this statement, then the approval to implement the proposal as granted in this statement shall lapse and be void. The Minister for the Environment shall determine any question as to whether the project has been substantially commenced. Any application to extend the period of five years referred to in this condition shall be made before the expiration of that period, to the Minister for the Environment by way of a request for a change in the condition under Section 46 of the Environmental Protection Act. (On expiration of the five year period, further consideration of the proposal can only occur following a new referral to the Environmental Protection Authority).

Bob Pearce, MLA
MINISTER FOR THE ENVIRONMENT

14 JAN 1977

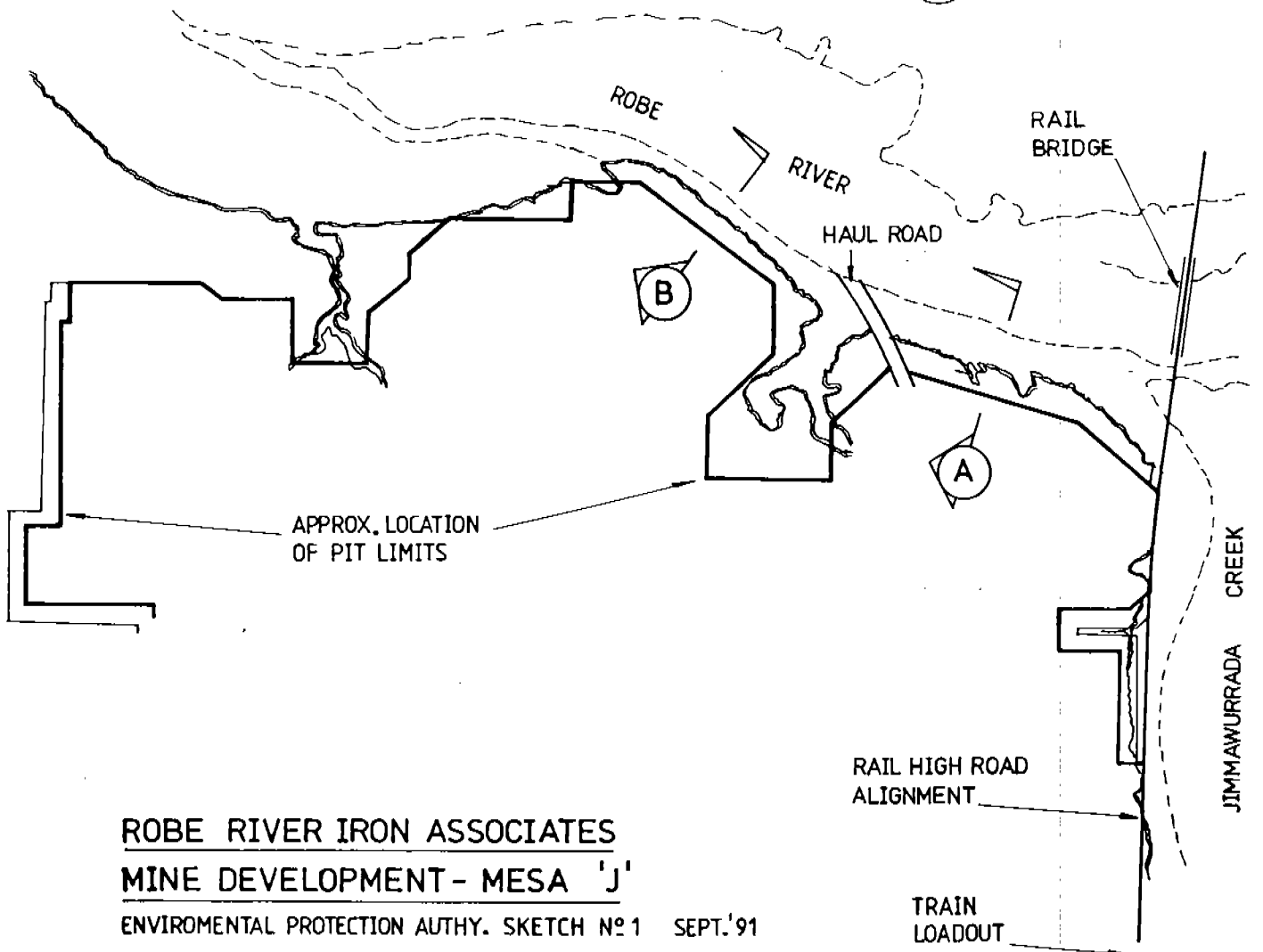


NOMINAL LEVELS THROUGH SECTION (A)



NOMINAL LEVELS THROUGH SECTION (B)

NORTH



ROBE RIVER IRON ASSOCIATES
MINE DEVELOPMENT - MESA 'J'

ENVIRONMENTAL PROTECTION AUTHY. SKETCH No 1 SEPT. '91

PROPONENT'S COMMITMENTS (CONSOLIDATED)

MESA J IRON ORE DEVELOPMENT, PANNAWONICA (590)

The proponent has made the following environmental commitments:

1. The proponent will develop and implement environmental monitoring and management programmes for the mining operation and associated activities in the course of project implementation.
2. The proponent will assign environmental monitoring and management responsibilities to appropriate personnel for the duration of the project.
3. The proponent will develop and implement an environmental awareness programme for all construction and operational workforce at the implementation phase of the project, and will continue it during ensuing years.
4. The proponent will minimise as far as practicable, recognising the requirements of mining and ore transfer, direct and indirect alteration of the physical environment for the duration of the project.
5. The proponent will control and monitor and manage noise, occupational and ambient dust, erosion, stormwater discharge, and sewage disposal for the duration of the project.
6. The proponent will implement landform stabilization and revegetation programs in the project area for the duration.
7. The proponent will monitor and manage dewatering of the mining area, and discharge of excess water to adjacent watercourses.
8. The proponent will take appropriate steps to protect, monitor and manage hydrology and vegetation within the adjacent riverine environment.
9. The proponent will monitor and manage any scour or siltation in the Robe River and Jimmawurrada Creek adjacent to the project, and will implement remedial works if deemed necessary by expert opinion.
10. The proponent will minimise, as far as practical, disturbance to culturally significant sites for the duration of the project.

11. At the completion of the project, the proponent will prepare the site for abandonment in accordance with the requirements of the Mines Department and in recognition of the requirements of the Iron Ore (Robe River) Agreement Act, 1964, including, as applicable:

1. Re-establishment of pre-existing drainage patterns as far as can be practicably achieved;
2. The initiation of stabilisation and revegetation activities to stabilise structures and communities; and
3. The mining plan will be modified to incorporate the return of as much waste rock to the mined out pit as can be practicably achieved during the life of the project.

Attachment to Statement 208

Change to Description of Proposal

Proposal: Mesa J Iron Ore Development

Proponent: Robe River Mining Co. Pty. Ltd.

Change: Mesa J Mine Pit Extension

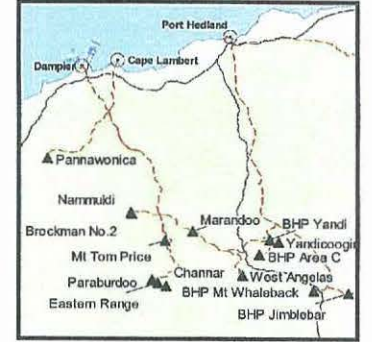
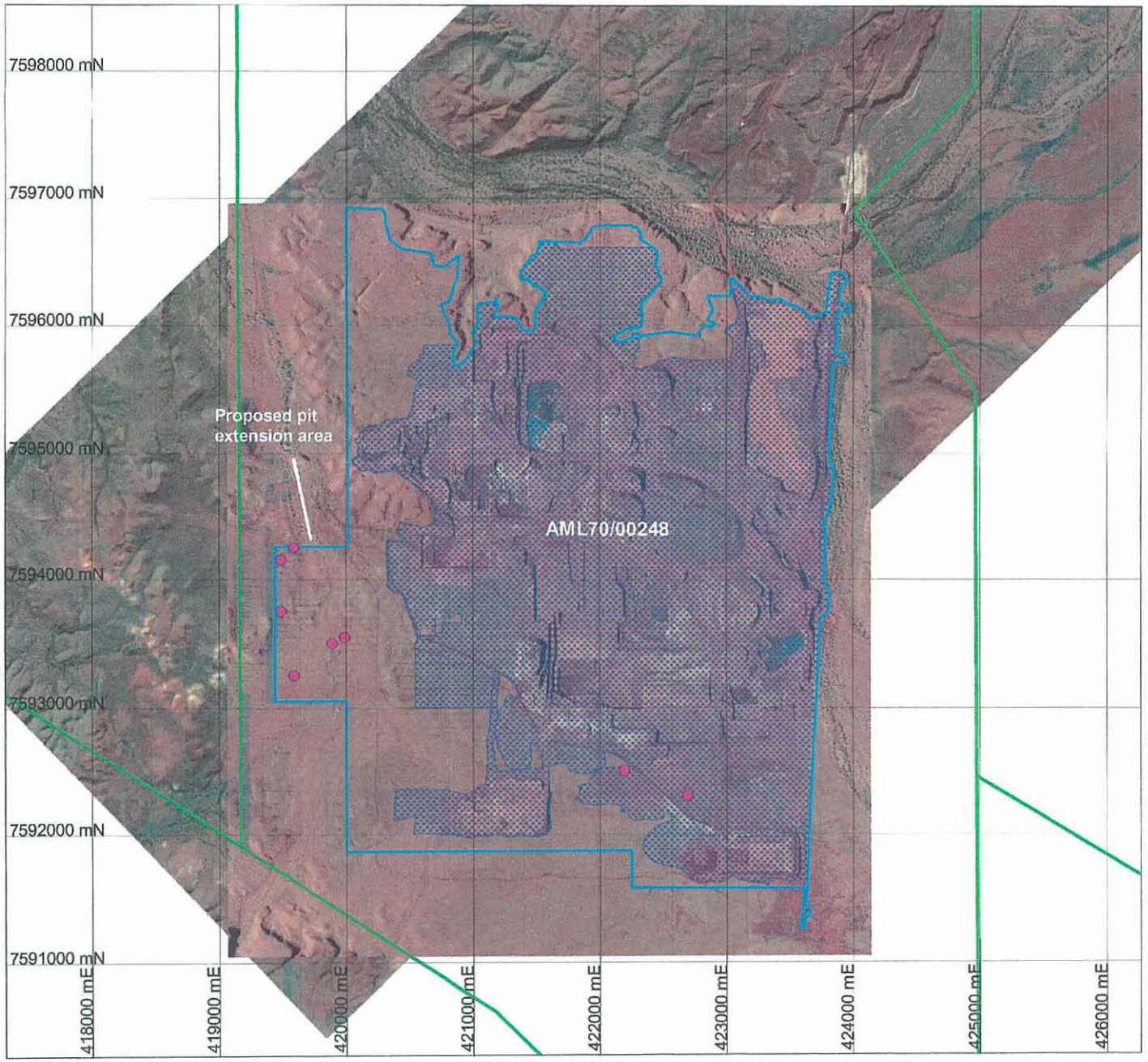
From:




To:

Element	Quantities/Description
Project life	18 - 25 years
Ore reserve	Approximately 600 million tonnes (Mt)
Percentage mining below water table and depth of mining	Approximately 42 per cent (%), to depth of approx. 120mRL
Total disturbance area (vegetation clearing)	1800 hectares (ha)

Figure 1. Proposed Pit Extension and Improved Boundary Definition

Approval Date: 20/12/05



-  Area disturbed to end December 2004
-  Proposed improved boundary definition
-  Troglobitic fauna sampling location

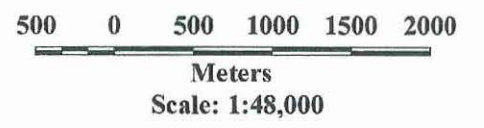


Figure 1
Proposed Pit Extension and Improved Boundary Definition

Author: Fiona Bell	Date: 22/8/05
Drawn:	Revised:
Dwg No.:	Report No.:
Projection: MGA Zone 50 (GDA94)	Scale: 1:48,000

Attachment to Statement 208

Change to Description of Proposal

Proposal: Mesa J Iron Ore Development, Pannawonica

Proponent: Pilbara Iron Pty Ltd for Robe River Mining Co. Pty. Ltd.

Change: New rail siding at Green Pool

Features of currently approved Proposal:

Element	Quantities/Description
Railway	Single standard railway line

Features of approved change to Proposal:

Element	Quantities/Description
Railway	Single standard railway line with a passing station at Green Pool, centre at 63km and a passing track, backtrack and spur.

Figure 1. Location

Approval Date: 13/11/06

Attachment to Statement 208

Change to description of Proposal

Proposal: Mesa J Iron Ore Development, Pannawonica

Proponent: Pilbara Iron (on behalf of Robe River Mining Co Pty Ltd)

Change: Installation of Fibre Optic Cable for railway communications system

Features of currently approved Proposal:

Element	Quantities/Description
Railway communications system	Single standard gauge railway line with a voice and data radio communications system.
Vegetation disturbance from railway communications construction	Unspecified in original approval.

Features of approved change to Proposal:

Element	Quantities/Description
Railway communications system	Single standard gauge railway line with a voice and data radio communications system with a Fibre Optic Cable from the 5 kilometre peg near Cape Lambert to the 71 kilometre peg near Western Creek.
Vegetation disturbance from railway communications construction	Unspecified plus 11 hectares permanent and 48 hectares temporary.

Approved: *6 March, 2007*

Attachment 2 to Statement 208

Change to Proposal

Proposal: Mesa J Iron Ore Development, Pannawonica

Proponent: Robe River Iron Associates

Change: Installation of Fibre Optic Cable for railway communications system from the Cape Lambert administration offices to the 5 kilometre peg and from the 71 kilometre peg to the Mesa J mine operations at Pannawonica (known as "the Deepdale Fibre Optic Cable").

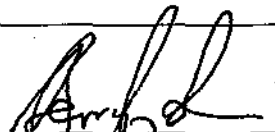
Features of previously approved Proposal:

Element	Quantities/Description
Railway communications system	Single standard gauge railway line with a voice and data radio communications system.
Vegetation disturbance from railway communications construction	Unspecified in original approval.

Features of changed Proposal:

Element	Quantities/Description
Railway communications system	Single standard gauge railway line with a voice and data radio communications system with a Fibre Optic Cable from the Cape Lambert administration offices to the 5 kilometre peg, and from the 71 kilometre peg to the Mesa J mine operations at Pannawonica (a total of approximately 130 kilometres).
Vegetation disturbance from railway communications construction	Unspecified plus 0.3 hectares permanent disturbance for construction of three 'communication shelters', and 68 hectares temporary disturbance.

Approved under delegation
from the Minister for the Environment:


EPA Chairman

Approval Date:

30/10/07