

A reliable and cost efficient solution to road asset management problems. Safe for use on all pavement materials.

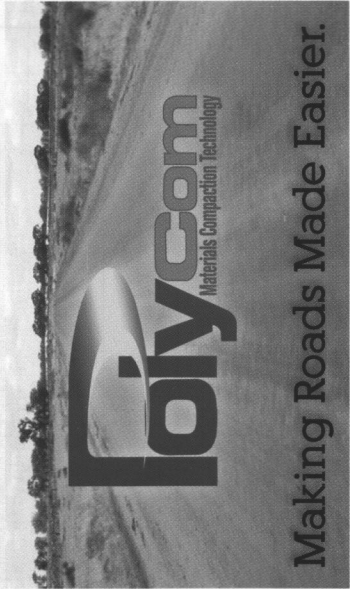
Using PolyCom will assist road builders achieve better results faster without making significant changes to the way they normally go about constructing roads. PolyCom is a totally ecologically safe product that has repeatedly demonstrated it can turn marginal material into good material and good material into excellent. This applies to sealed as well as unsealed road construction.

In the process of constructing a road, PolyCom will deliver an economic benefit by reducing construction time.

The unique performance characteristics of PolyCom will deliver superior compaction for greater structural integrity.

The function of PolyCom is to:

- Provide a safe, economical and durable all-weather surface.
- Minimise pavement construction operations and water costs.
- Provide a riding surface of suitable smoothness and reliability.
- Minimise vehicle operating and maintenance costs.
- Provide a relatively dust-free surface for unsealed roads.
- Minimise the rate of pavement wear, rutting and shape loss and maintenance costs.
- Reduce moisture ingress into the pavement.
- Provide suitable ecological properties for the local environment eg. Noise and dust reduction, non toxic properties and surface



Making Roads Made Easier.

PolyCom and DustChek are trade-marked products of BioCentral Laboratories Ltd. PolyCom Educator is a patented product of BioCentral Laboratories Ltd.

PolyCom is a co-polymer product developed in Australia by:

40c/m² sand application
in-stitch application
biocentral laboratories

BioCentral Laboratories Ltd.

Hilton Central,

46 Sir Donald Bradman Drive

Mile End

South Australia 5031

1800 886 886

www.biocentral-labs.com



Making Roads Made Easier.



SAVE ON CRITICAL ASSET MANAGEMENT COSTS WITH POLYCOM

Pavement Stabilisation & Compaction For Sealed & Unsealed Roads



Compaction & Stabilisation Binder

PolyCom provides significant savings on all compaction and stabilisation applications.

PolyCom acts as an enhancement to water performance. It ingeniously improves the binding and compaction characteristics of water to create greater efficiencies in achieving the desired pavement compaction with less water, time and resources spent on the project.

The most attractive feature of this product is its ability to bind granular materials.

PolyCom facilitates the inherent fines and crushed stone to slip into a tighter bound compacted pavement.

The polymer base of PolyCom works within the fine material to cause dilation and rapid densification under the compaction process.

- Reduced construction and maintenance costs.
- Improved pavement strength and durability.
- Reduced cracking and rutting due to fatigue.
- Improved pavement surface shape (reduced deformation)
- Skid resistance improvement.
- Improved surface texture and drainage.
- Improved permeability values - reduced ingress.
- Noise reduction.
- Less water requirement for construction and maintenance.
- Contributes significantly to responsible water conservation programs.



Road Construction Rip & Reform Resheeting

The PolyCom Educator.

Essential for dosing efficiently.

The educator is a simple piece of equipment specially designed in consultation with the civil construction industry. PolyCom is efficiently and most importantly, speedily added to the water stream, whether it is to fill a water truck, a standing tank, or a pug mill.

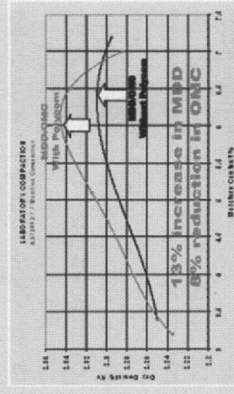
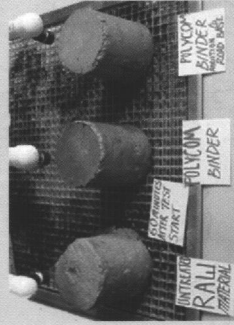


Laboratory and Road Trials Prove PolyCom a Cost Effective Solution.

PolyCom trials conducted under strict conditions in both laboratory and road trial sections by independent Roads Management specialist, Bob Andrews*, conclusively proved that PolyCom will improve compaction and shrink dry-back times, thereby significantly reducing construction and maintenance costs and extending the life of the asset.

Laboratory Tests

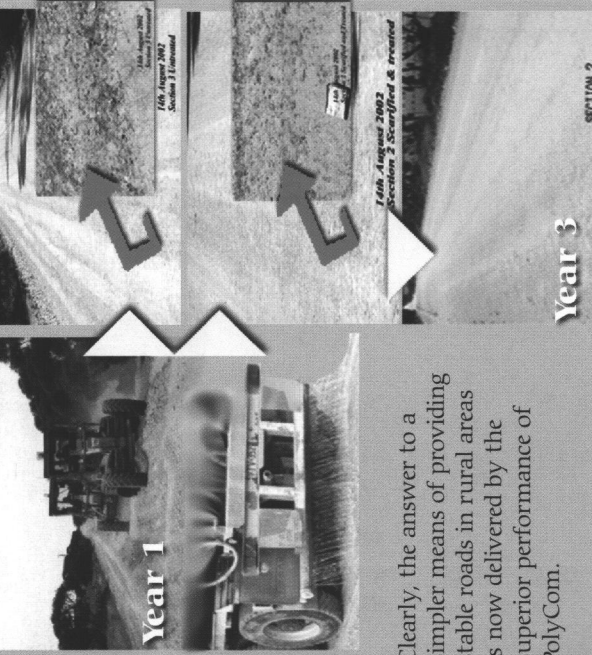
The stabilisation properties illustrated below are created by the bonding characteristics of PolyCom, producing a tight and relatively waterproof compacted surface. In addition, the polymeric action whilst being enhanced by source material plasticity or clay content is not totally dependent upon it to achieve an improvement.



Compacted samples subjected to saturation from dripping water on surface (note waterproofing characteristics)

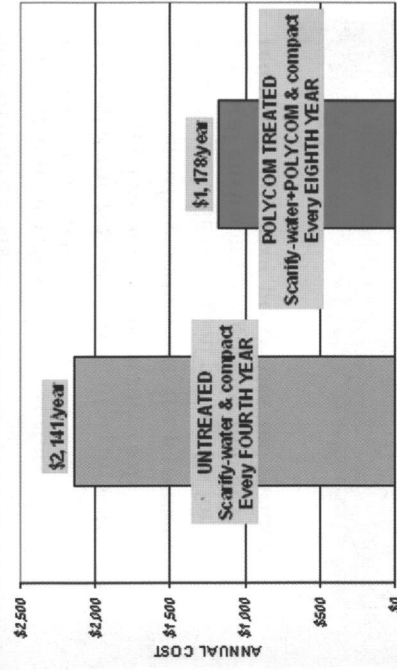
Dramatically reduces time, water and asset management costs on road construction and maintenance. Reduces incidence of rutting and degradation during constant use and changing weather conditions. Ensure surfaces remain consistently serviceable, especially in wet conditions.

Field Trial



LIFE CYCLE COSTING ESTIMATES

Both assessments assume sheeting life is 20 years.
NOTE: Sheetting life of the untreated section could be reduced to 15 years based upon rutting and aggregate exposure observations.



PolyCom surpasses all previous time consuming and costly methods for constructing roads and maintaining roads.

PolyCom is scientifically formulated and trial proven to improve compaction and wear resistance on pavement materials.

* Complete trial report available at www.biocentral-labs.com

