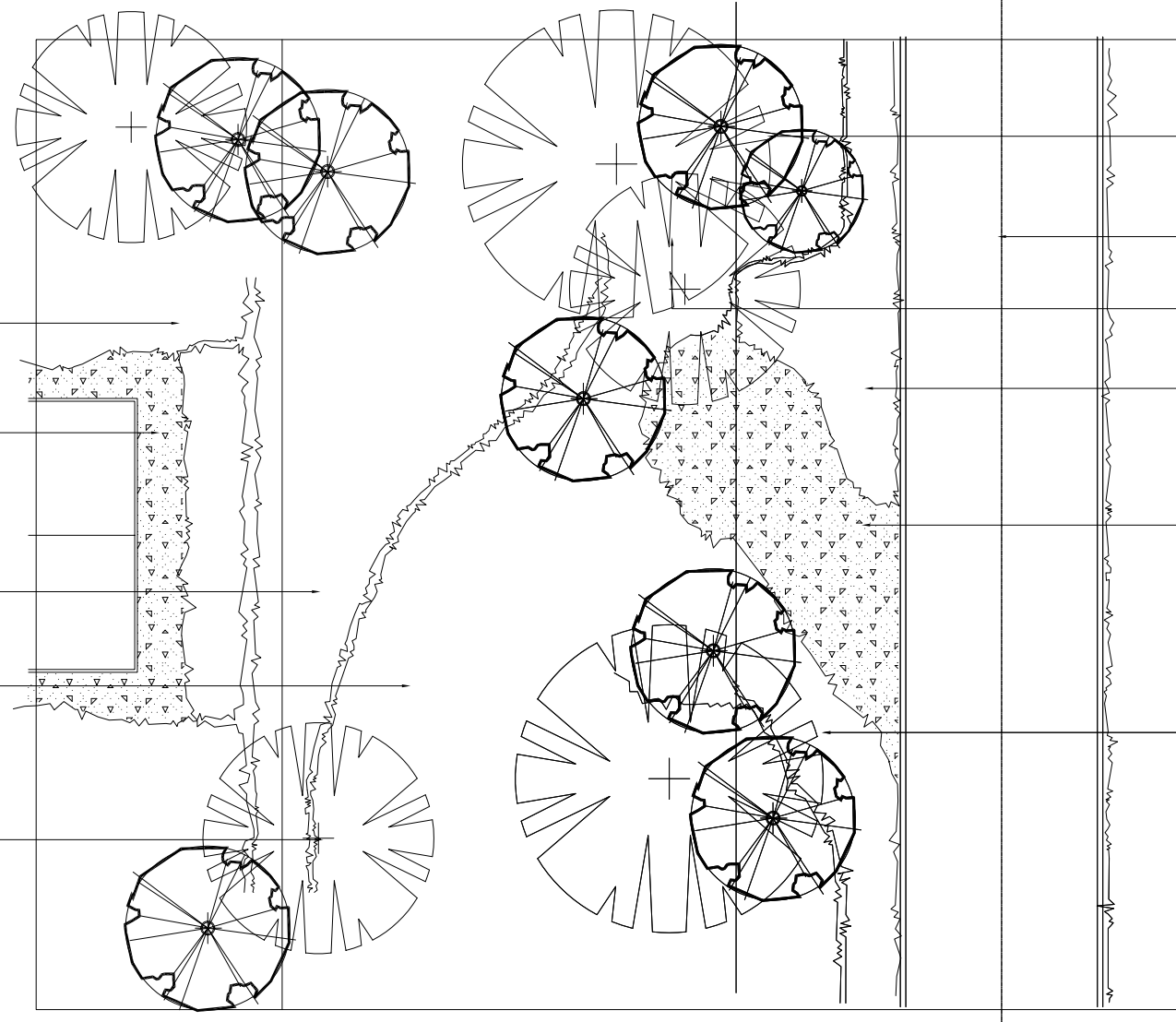
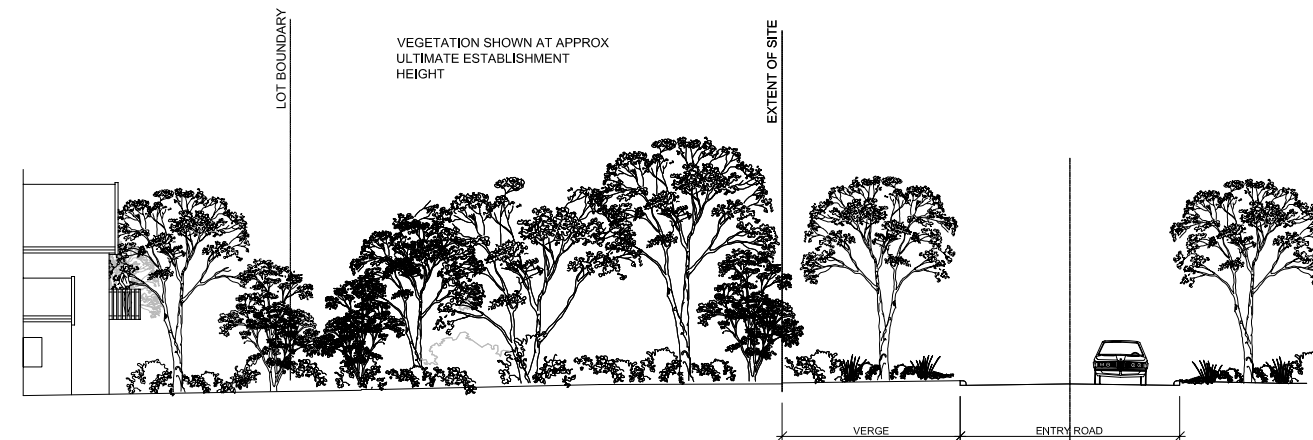


01 TYPICAL LANDSCAPE TREATMENT: ENTRY ROAD
PLAN / SECTION



RESIDENTIAL LOTS: EXISTING TREES TO BE RETAINED WHERE POSSIBLE. GARDEN PLANTING TO COMPLEMENT SURROUNDING BUSHLAND

LOCAL GRAVEL AND STONE MULCH TO RESIDENTIAL APARTMENT SURROUNDS

NATIVE GROUND COVER PLANTING AT 4 PER SQ. M OVERSEEDED WITH LOCAL VEGETATION

NATIVE SHRUB PLANTING AT 2 PER SQ. M

EXISTING TREES AND NATURAL GROUND LEVELS TO BE RETAINED

STREET TREES: TO HAVE RANDOM PLANTING STRUCTURE, NO AVENUES, PLANTING IN MIXED GROUPS OF 3.5 OR 7 IN ACCORDANCE WITH RECOMMENDED SPECIES SELECTION.

STREET TREES: TO HAVE RANDOM PLANTING STRUCTURE, NO AVENUES, PLANTING IN MIXED GROUPS OF 3.5 OR 7 IN ACCORDANCE WITH RECOMMENDED SPECIES SELECTION.

EXISTING TREES AND VEGETATION TO BE RETAINED WHERE POSSIBLE AND REHABILITATED IF NECESSARY.

LOW SHRUB AND GROUND COVER PLANTING WITHIN ROAD RESERVE.

LOCAL GRAVEL AND STONE MULCH BETWEEN GARDEN BEDS

REHABILITATION PLANTING TO BE IN ACCORDANCE WITH FESA REQUIREMENTS FOR FUEL REDUCTION.

ESTABLISHMENT IRRIGATION TO ALL GARDEN BEDS

02 TYPICAL LANDSCAPE TREATMENT: ENTRY ROAD
PLAN / SECTION





SIGNIFICANT TREES IDENTIFIED IN THIS AREA:
Cotinba callaphylla
Agonis flexuosa
Melaleuca lanceolata
Eucalyptus marginata
Banksia attenuata
 EXISTING TREES TO BE RETAINED WHERE POSSIBLE

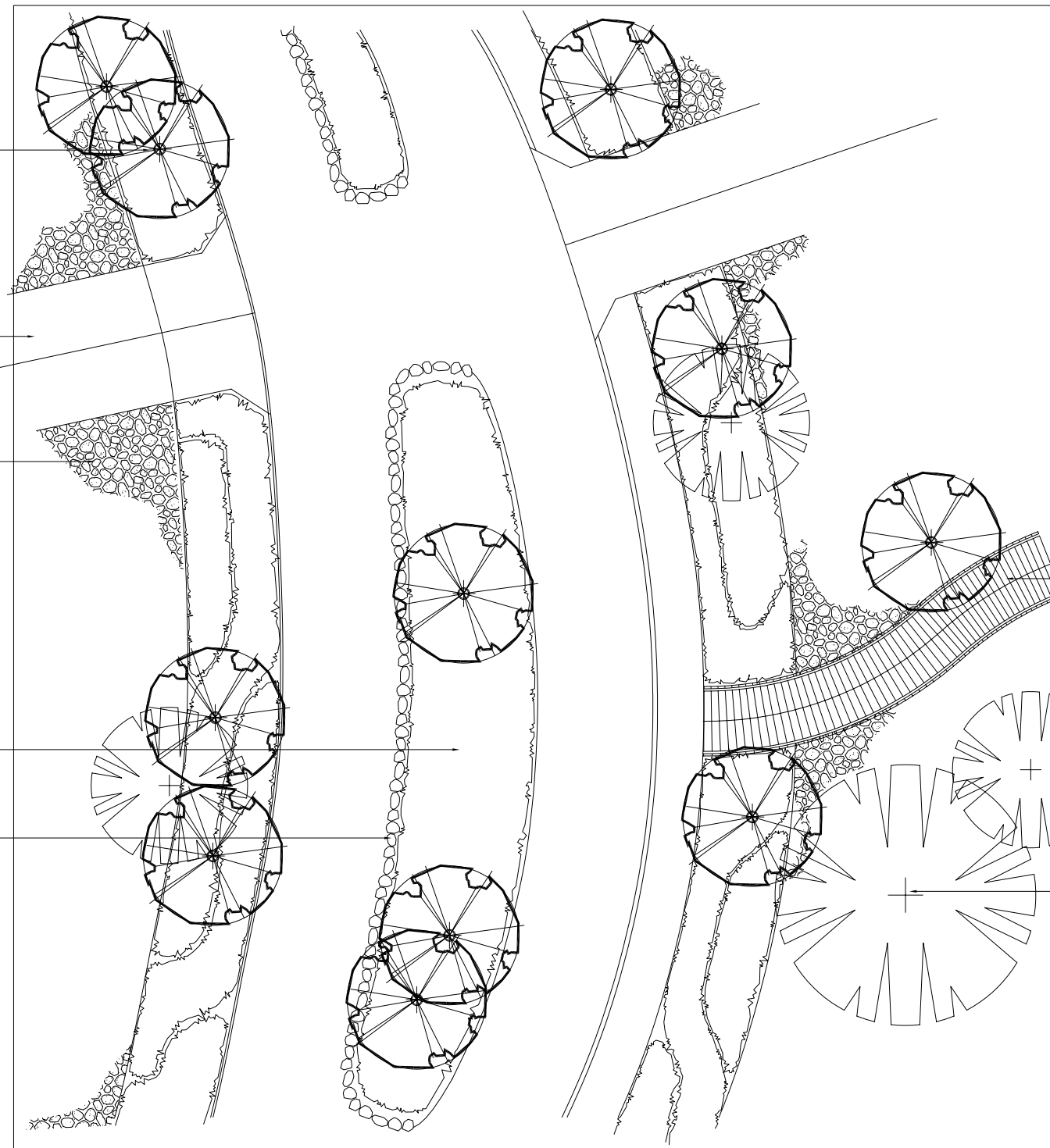
STREET TREES:
 AGONIS FLEXUOSA

COMBINED DRIVEWAY

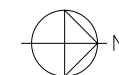
STONE PITCHING / RETAINING USING LOCAL STONE, INCORPORATED WITH GROUND COVER AND SHRUB PLANTING.

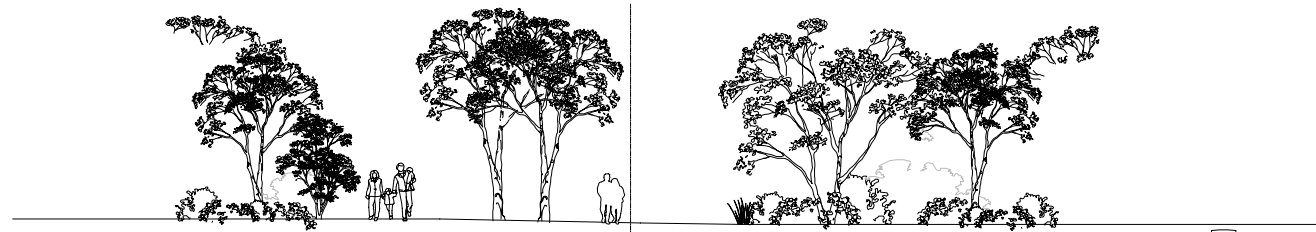
MEDIAN WITH GROUND COVER AND SHRUB PLANTING ALLOWING SPLIT LEVEL CARRIAGEWAY

INFORMAL BOULDER KERB TO MEDIAN UTILISING LOCAL STONE



03 TYPICAL LANDSCAPE TREATMENT: ROAD 1 MEDIAN
 PLAN / SECTION

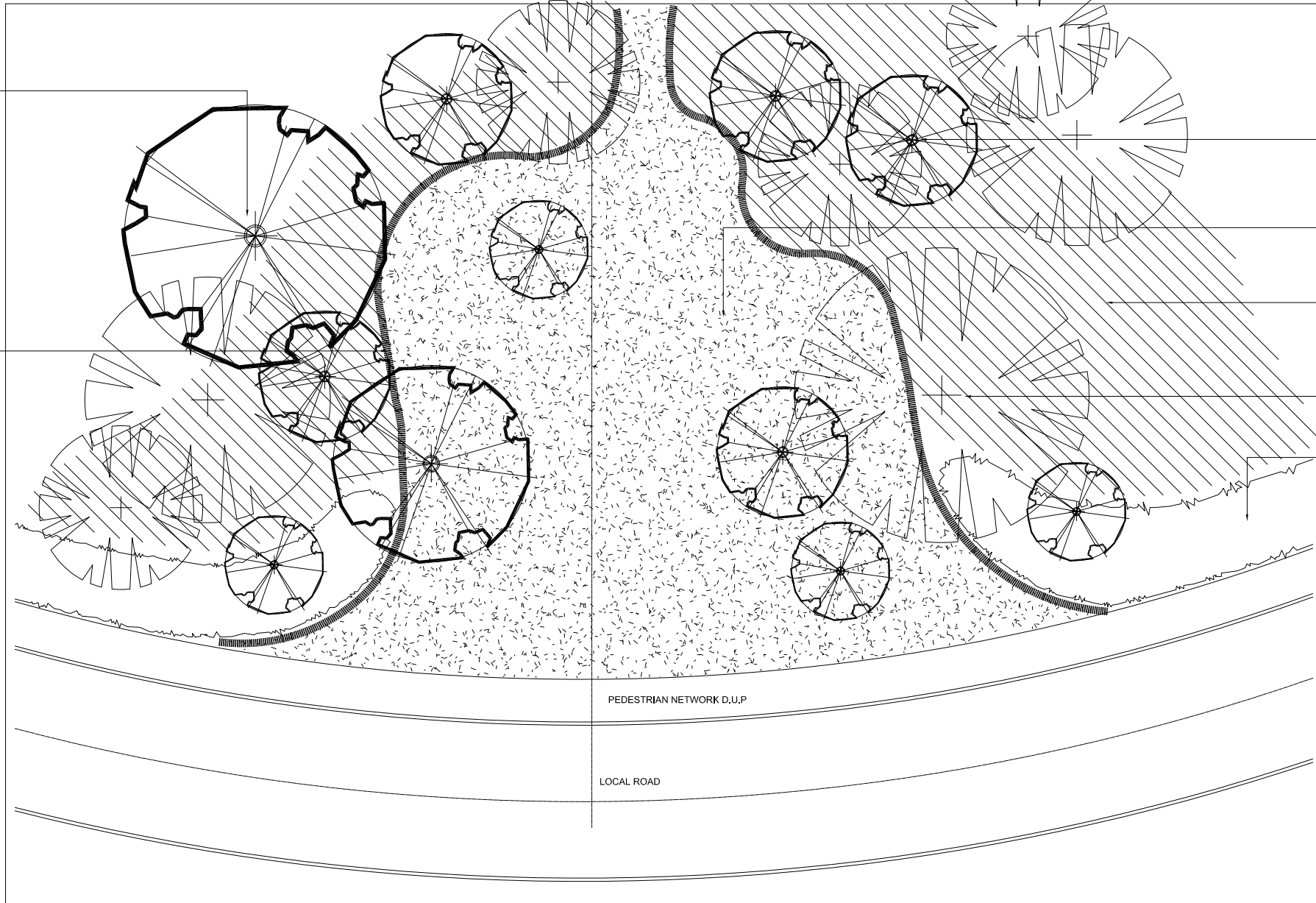




AREAS OF RETAINED VEGETATION TO BE REGULARLY SPRAYED TO ERADICATE WEEDS. RETAINED VEGETATION AREAS TO BE INCLUDED AS PART OF LONGTERM MAINTENANCE CONTRACTS.

RETAINED UNDERSTORY VEGETATION TO BE REHABILITATED WITH ADDITIONAL TUBESTOCK PLANTING IF NECESSARY.

MIN 350mm WIDE HARD EDGE TO SEPERATE GRASS AREAS FROM RETAINED VEGETATION. SPREAD 2m WIDE STRIP OF SITE MULCH AROUND PERIMETER OF RETAINED VEGETATION TO SUPPRESS WEED GROWTH.



SIGNIFICANT TREES IDENTIFIED IN THIS AREA:
Corimbia callaphylla
Aporosa flexuosa
Melaleuca lanceolata
Eucalyptus marginata
Banksia attenuata
 EXISTING TREES TO BE RETAINED

NEW TREE PLANTING (MEDIUM STOCK SIZE 45LT) WHERE NECESSARY. PLANTING DESIGN SHOULD REFLECT NATIVE VEGETATION STRUCTURE, SPECIES AS PER RECOMMENDED SPECIES LIST.

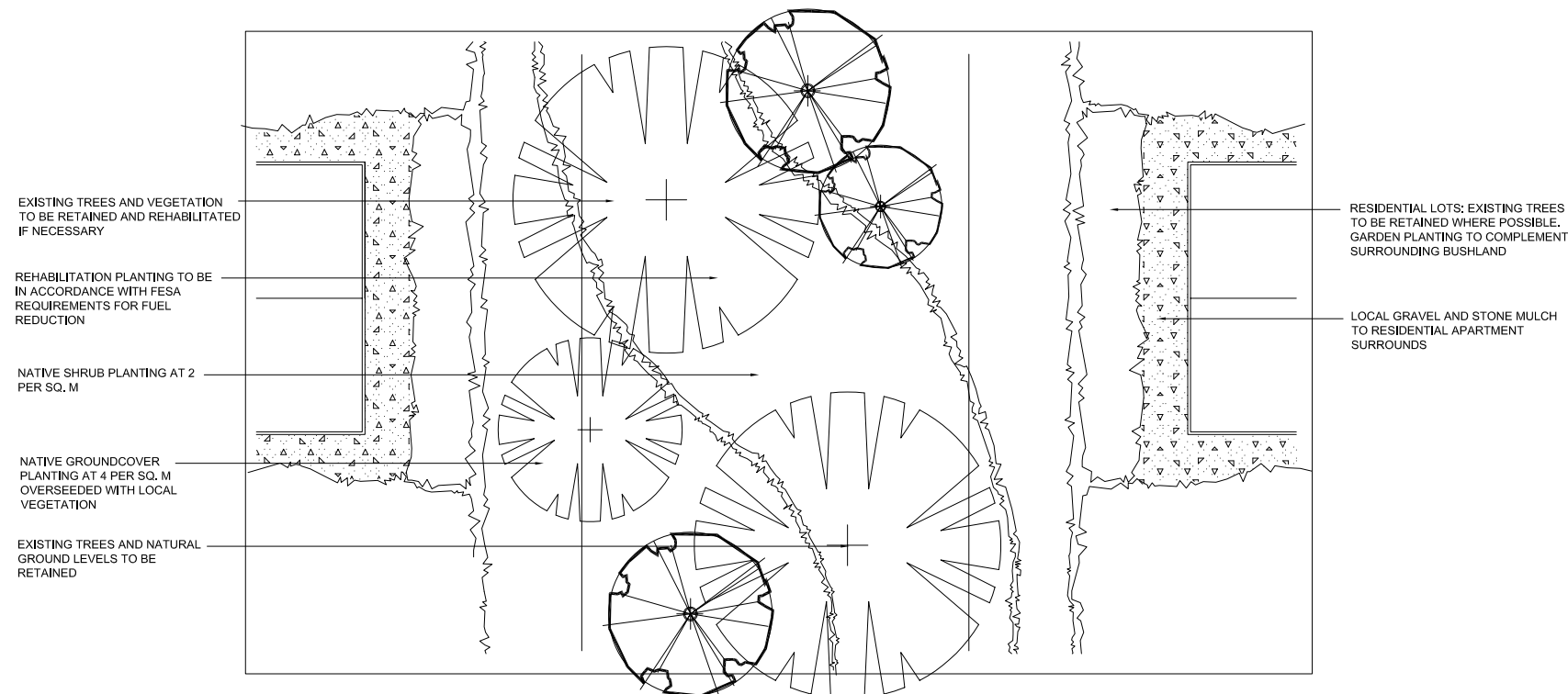
GRASS AREAS TO BE RESTRICTED TO AREAS OF NATURAL OPEN GROUND OR DEGRADED VEGETATION. AREAS SHOULD BE IDENTIFIED AND PEGGED ON SITE PRIOR TO FINALISATION OF POS DESIGN.

AREAS OF SIGNIFICANT EXISTING UNDERSTORY VEGETATION TO BE RETAINED. AREAS TO BE IDENTIFIED AND PEGGED OFF ON SITE PRIOR TO FINALISATION OF POS DESIGN.

EXISTING TREES AND NATURAL GROUND LEVELS TO BE RETAINED

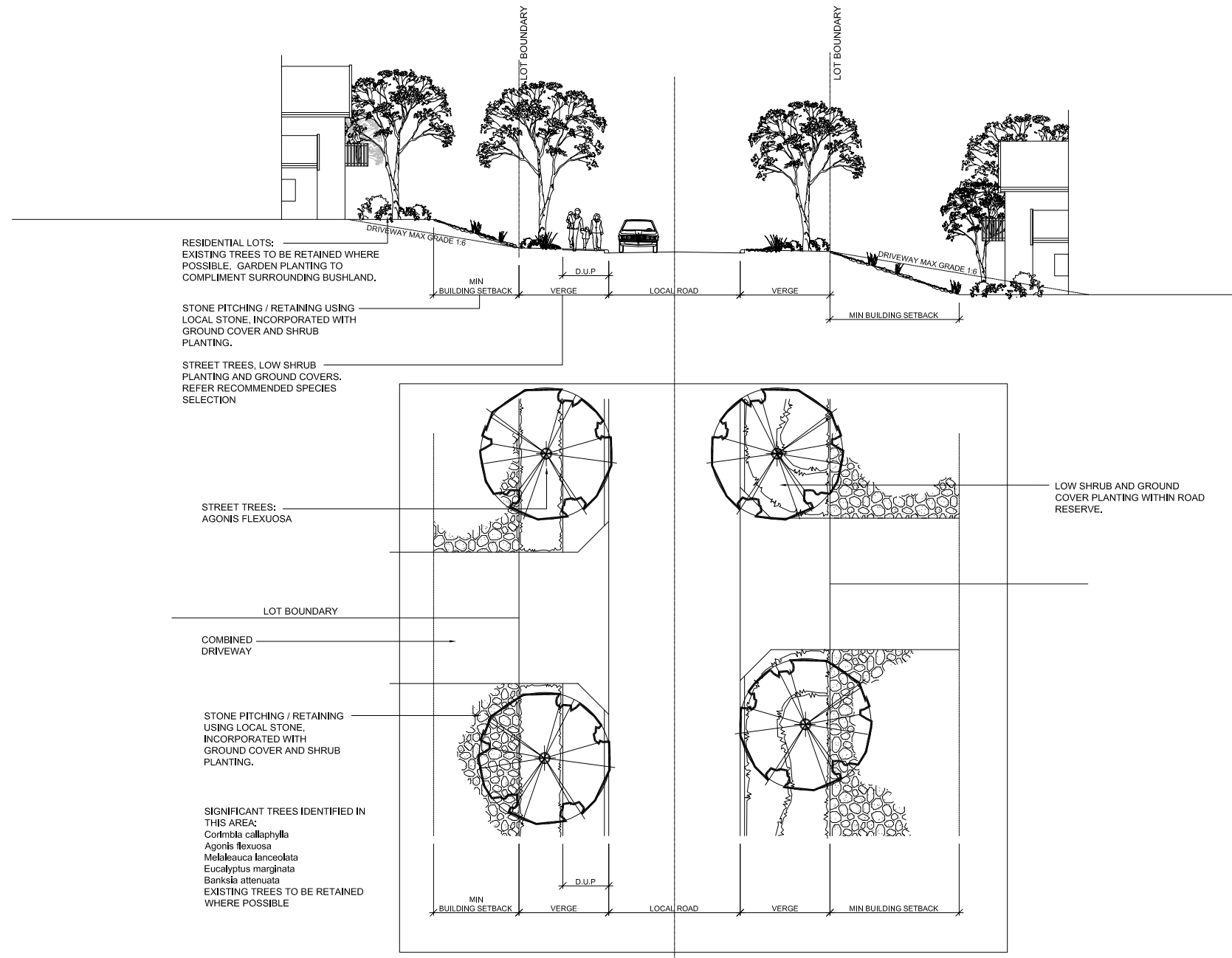
04 TYPICAL LANDSCAPE TREATMENT: POS 1
 PLAN / SECTION



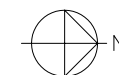


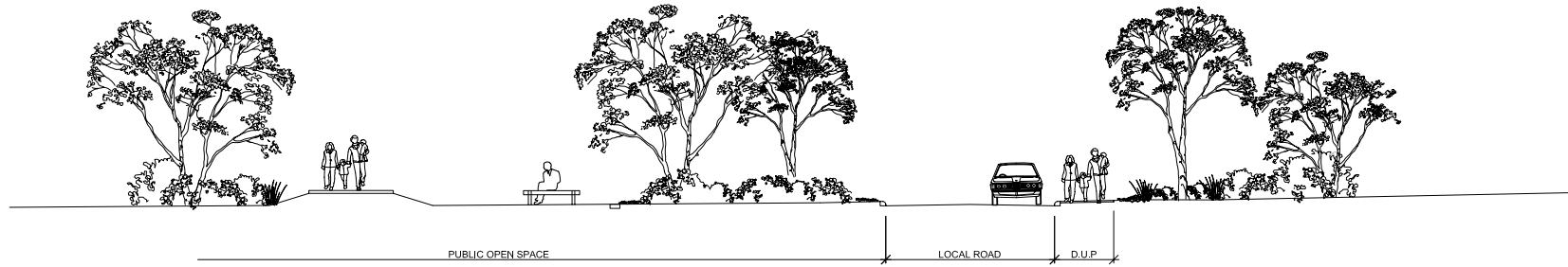
05 TYPICAL LANDSCAPE TREATMENT: APARTMENT SURROUNDS
PLAN / SECTION



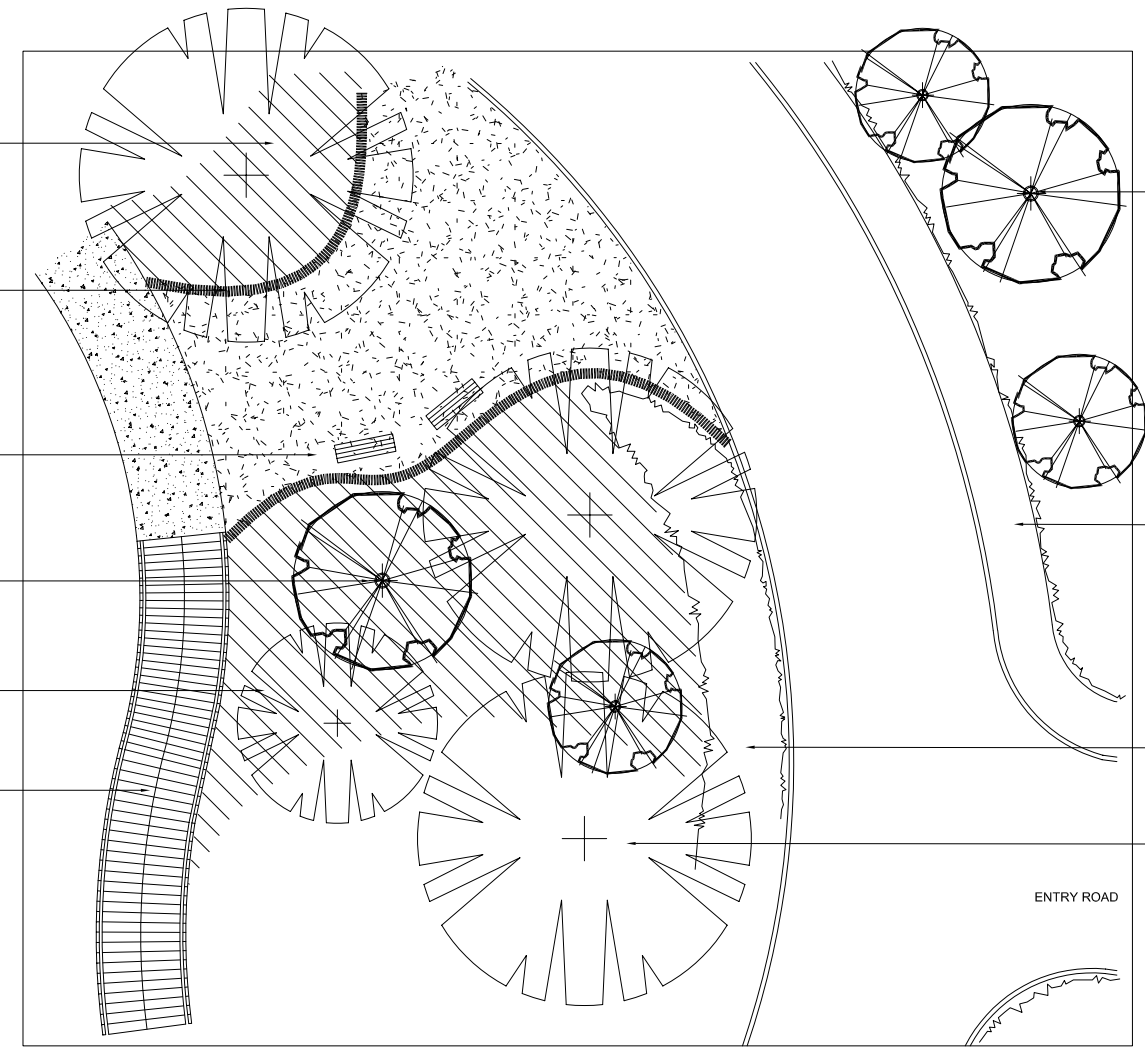


06 TYPICAL LANDSCAPE TREATMENT: ROAD 1
PLAN / SECTION



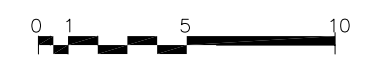
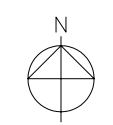


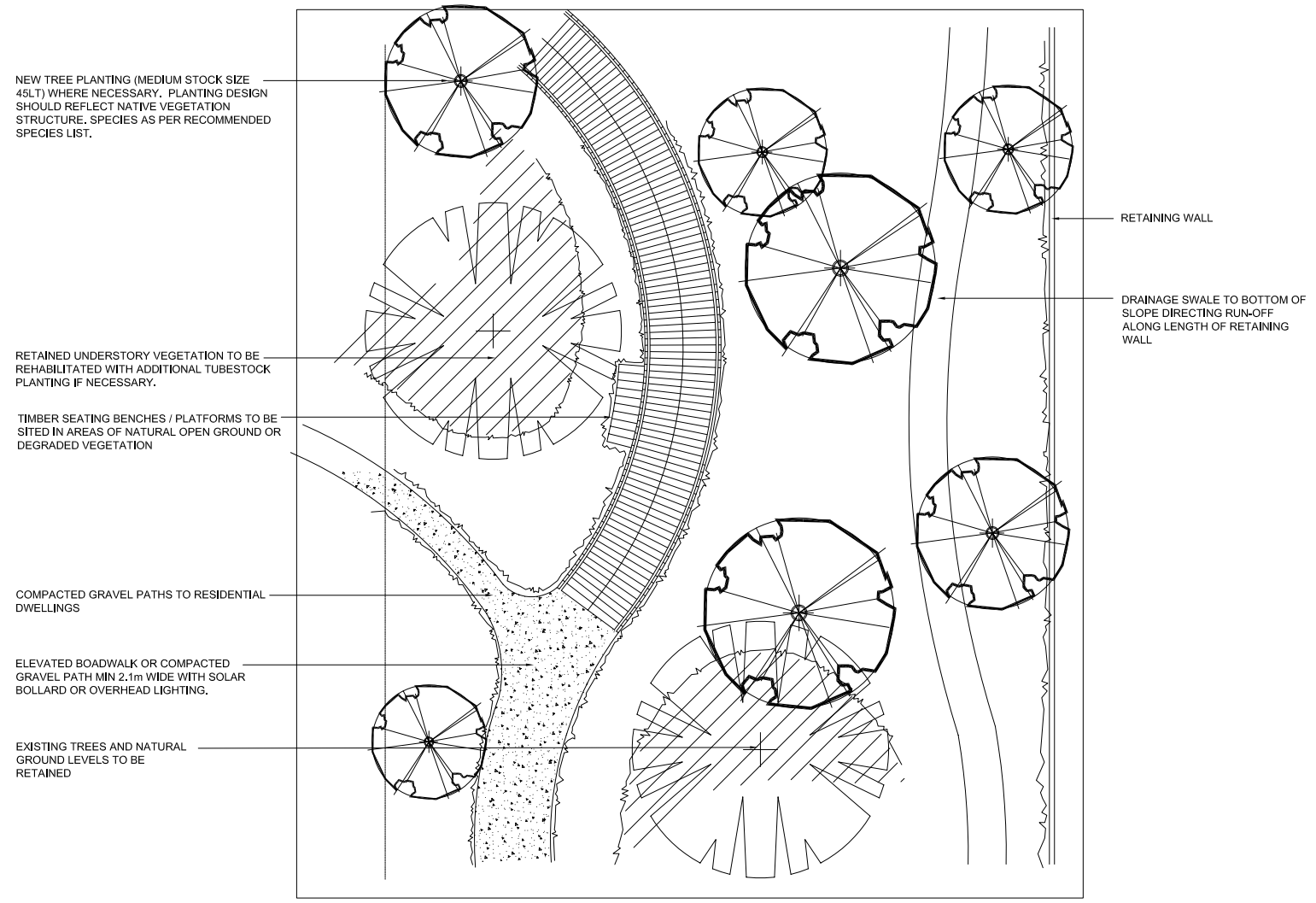
- AREAS OF RETAINED VEGETATION TO BE REGULARLY SPRAYED TO ERADICATE WEEDS. RETAINED VEGETATION AREAS TO BE INCLUDED AS PART OF LONGTERM MAINTENANCE CONTRACTS.
- MIN 350mm WIDE HARD EDGE TO SEPERATE GRASS AREAS FROM RETAINED VEGETATION. SPREAD 2m WIDE STRIP OF SITE MULCH AROUND PERIMTER OF RETAINED VEGETATION TO SUPPRESS WEED GROWTH.
- GRASS AREAS AND SEATING BENCHES TO BE RESTRICTED TO AREAS OF NATURAL OPEN GROUND OR DEGRADED VEGETATION. AREAS SHOULD BE IDENTIFIED AND PEGGED ON SITE PRIOR TO FINALISATION OF POS DESIGN.
- NEW TREE PLANTING (MEDIUM STOCK SIZE 45LT) WHERE NECESSARY. PLANTING DESIGN SHOULD REFLECT NATIVE VEGETATION STRUCTURE. SPECIES AS PER RECOMMENDED SPECIES LIST.
- AREAS OF SIGNIFICANT EXISTING UNDERSTORY VEGETATION TO BE RETAINED. AREAS TO BE IDENTIFIED AND PEGGED OFF ON SITE PRIOR TO FINALISATION OF POS DESIGN.
- ELEVATED BOADWALK OR COMPACTED GRAVEL PATH MIN 2.1m WIDE WITH SOLAR BOLLARD OR OVERHEAD LIGHTING.



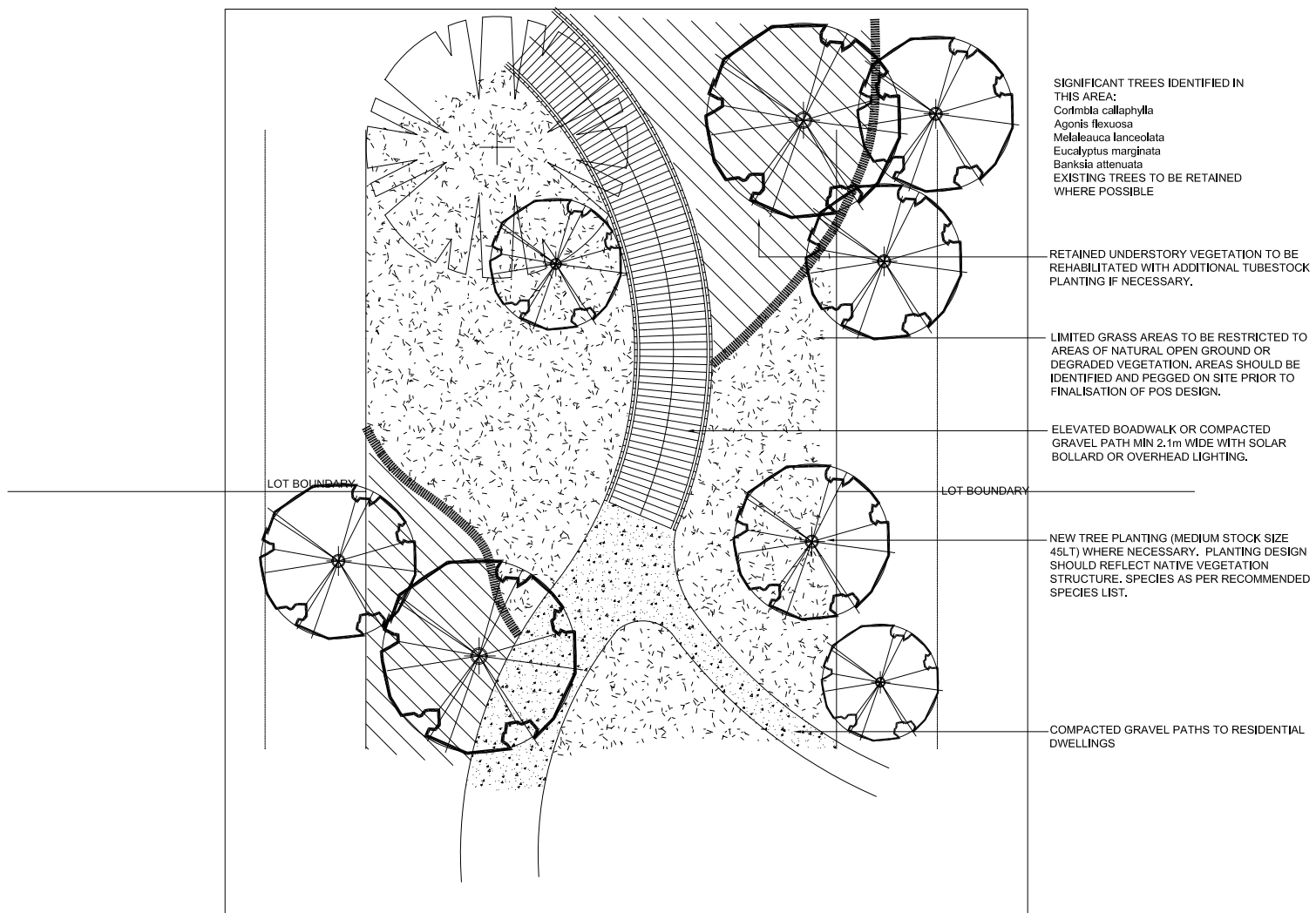
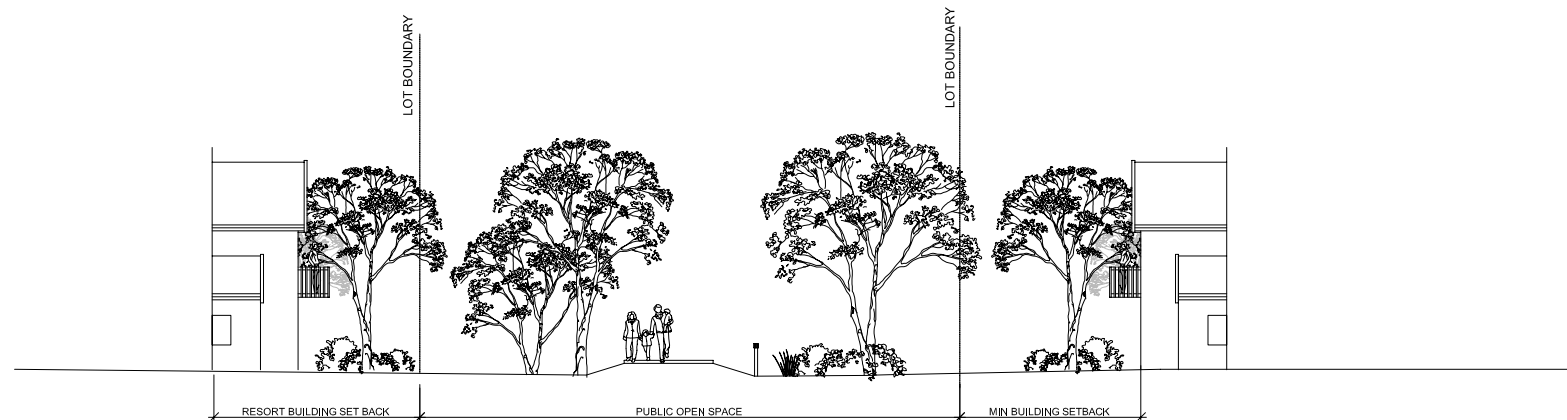
- STREET TREES: TO HAVE RANDOM PLANTING STRUCTURE. NO AVENUES. PLANTING IN MIXED GROUPS OF 3.5 OR 7 IN ACCORDANCE WITH RECOMMENDED SPECIES SELECTION.
- PEDESTRIAN NETWORK D.U.P.
- SUPPLEMENTARY ENDEMIC GROUND COVER PLANTING TO EDGE OF RETAINED VEGETATION
- RETAIN EXISTING VEGETATION TO JUNCTION OF ENTRY ROAD TO REINFORCE DOMINANCE OF VEGETATION IN KEY SIGHT LINES

07 TYPICAL LANDSCAPE TREATMENT: POS 1 / ENTRY ROAD
 PLAN / SECTION SCALE 1:125

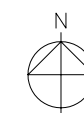


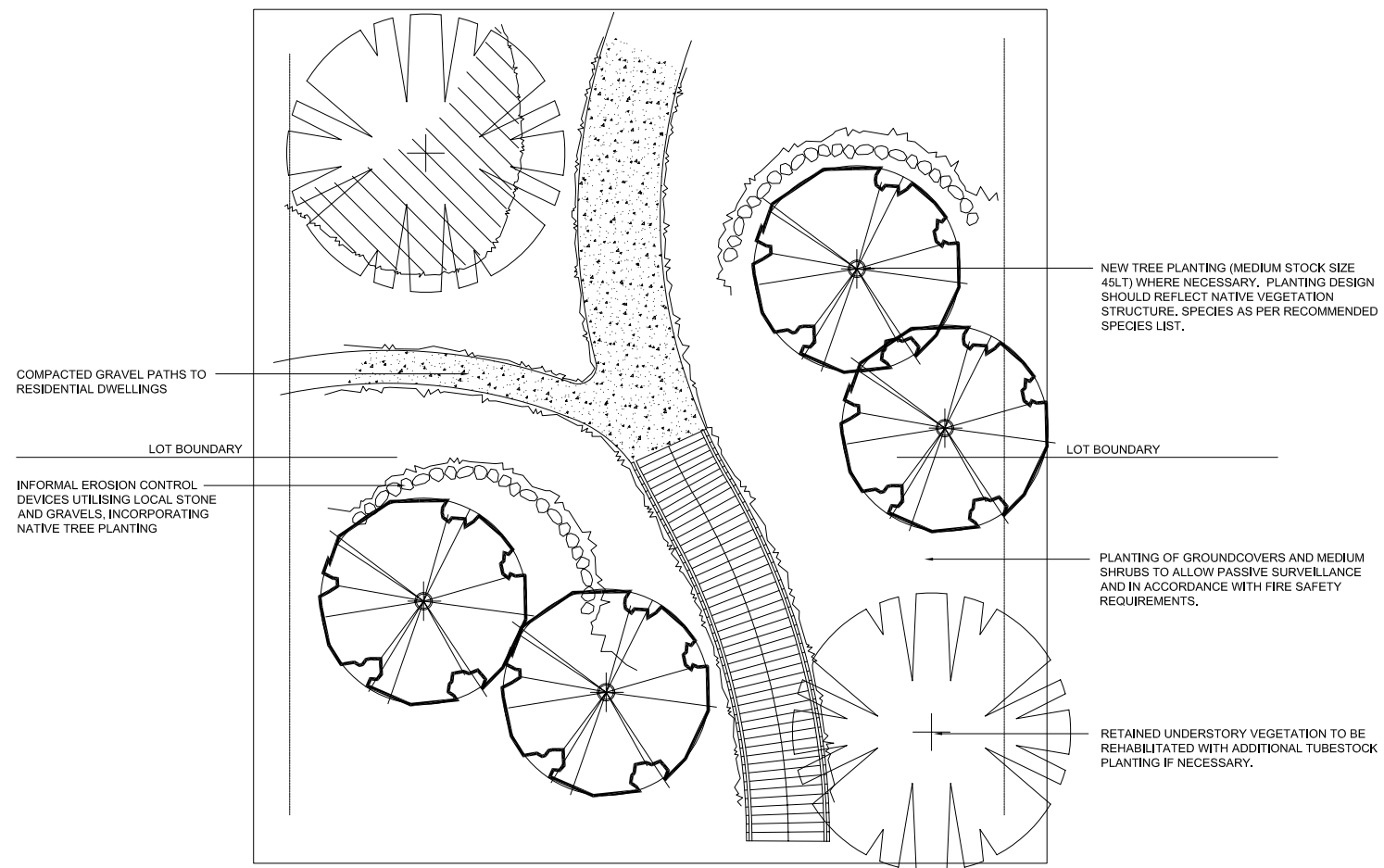
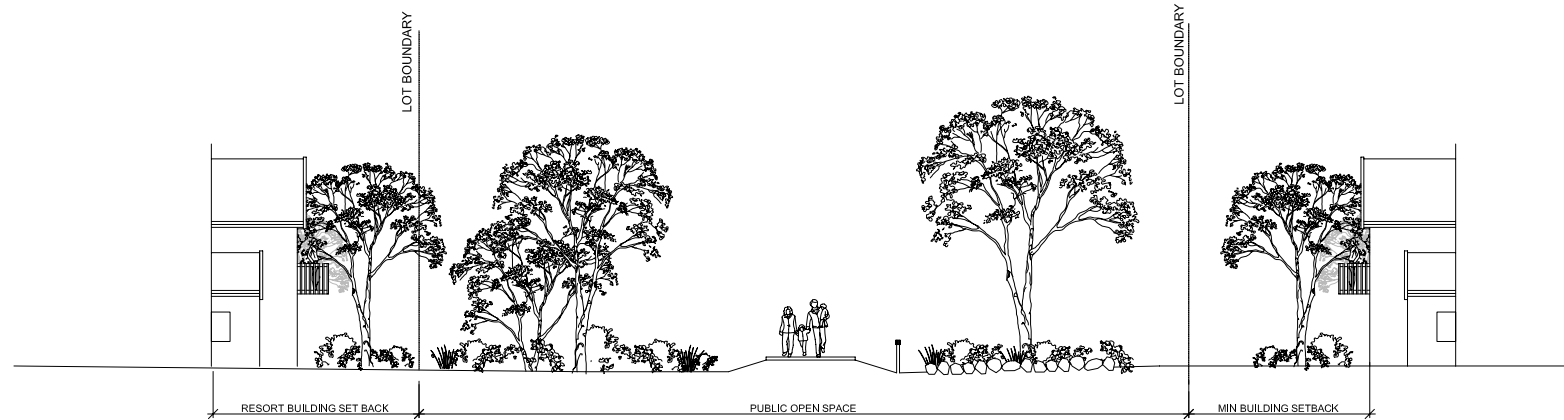


08 TYPICAL LANDSCAPE TREATMENT: POS 1
PLAN / SECTION SCALE 1:125



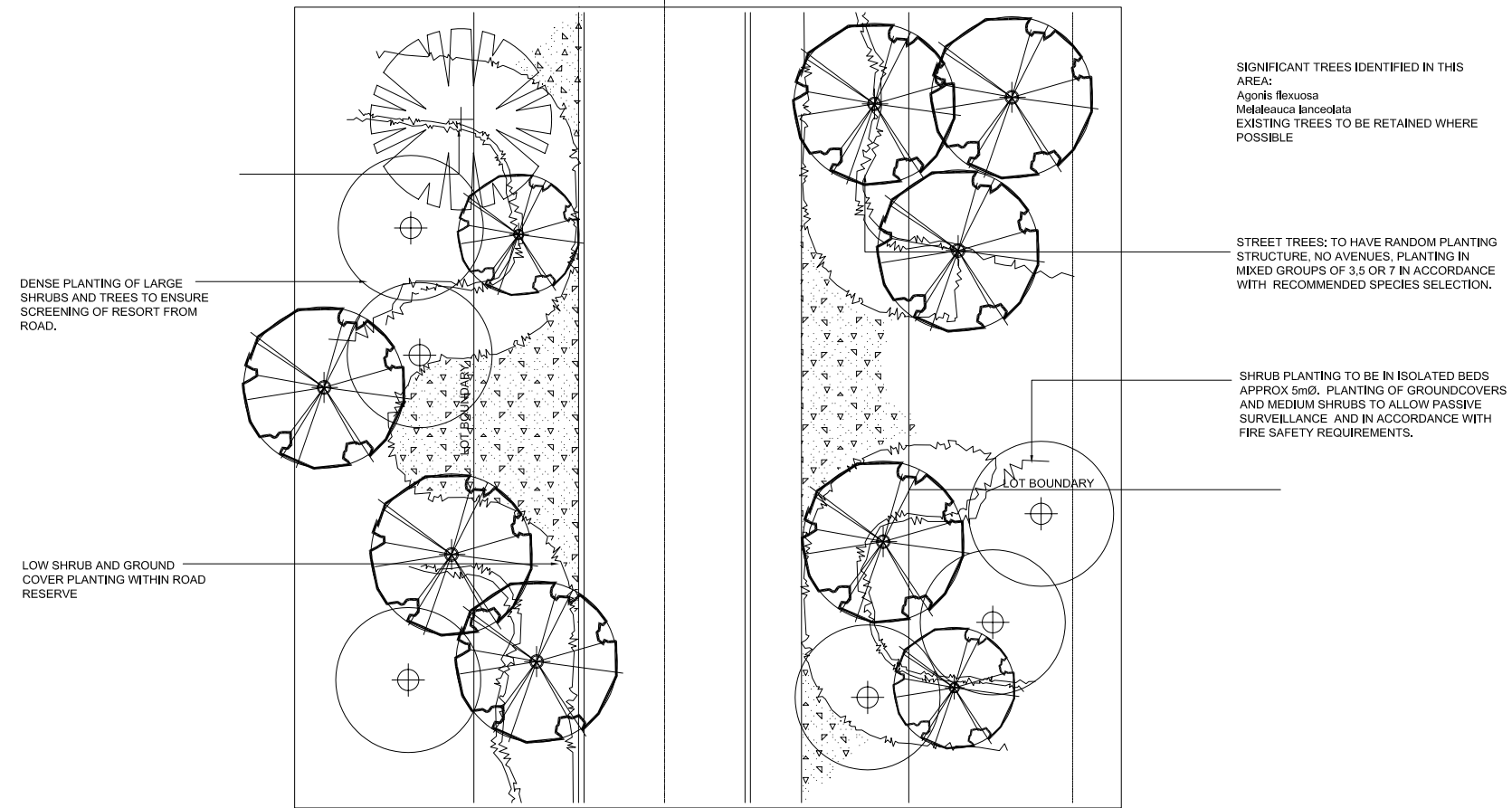
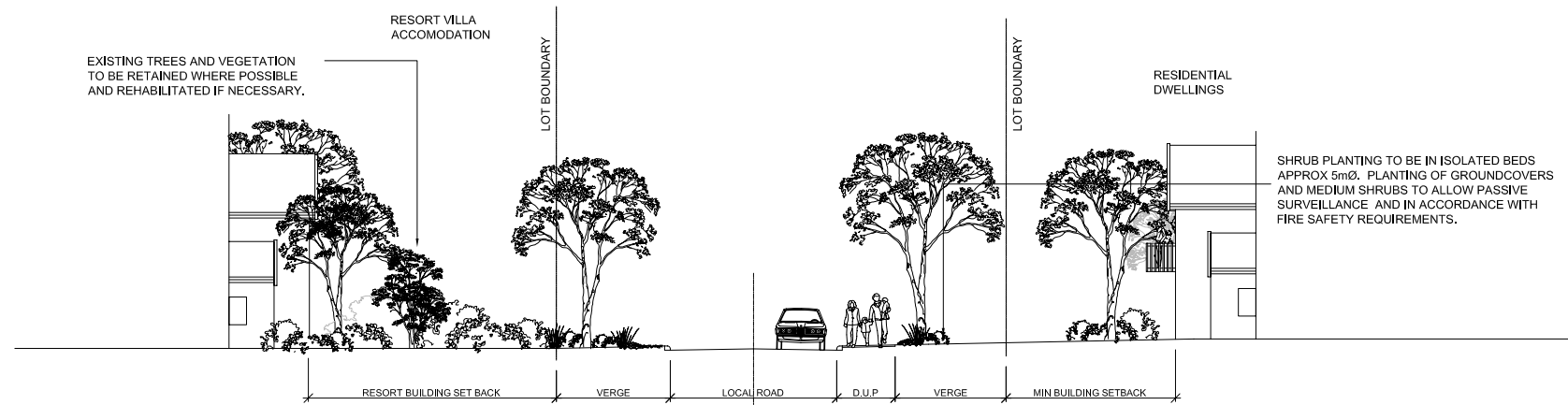
09 TYPICAL LANDSCAPE TREATMENT: POS 2
 PLAN / SECTION





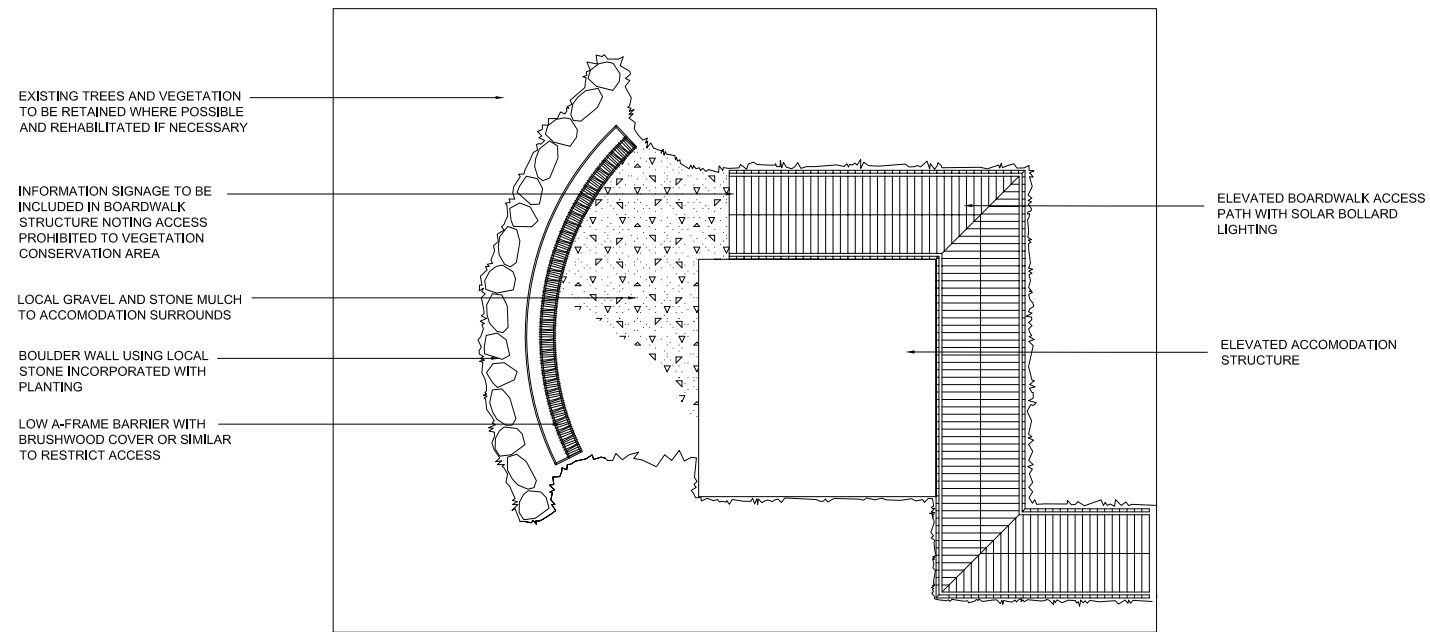
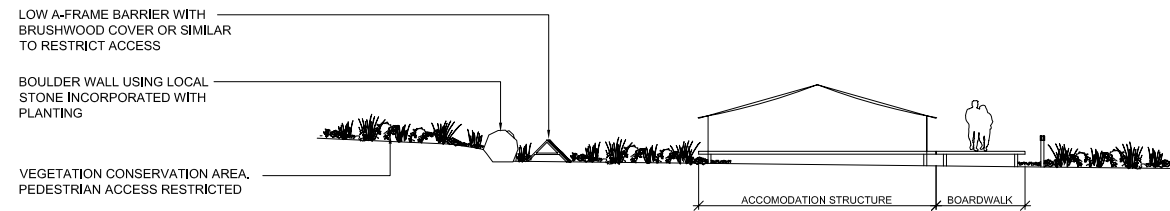
10 TYPICAL LANDSCAPE TREATMENT: POS 2
PLAN / SECTION SCALE 1:125





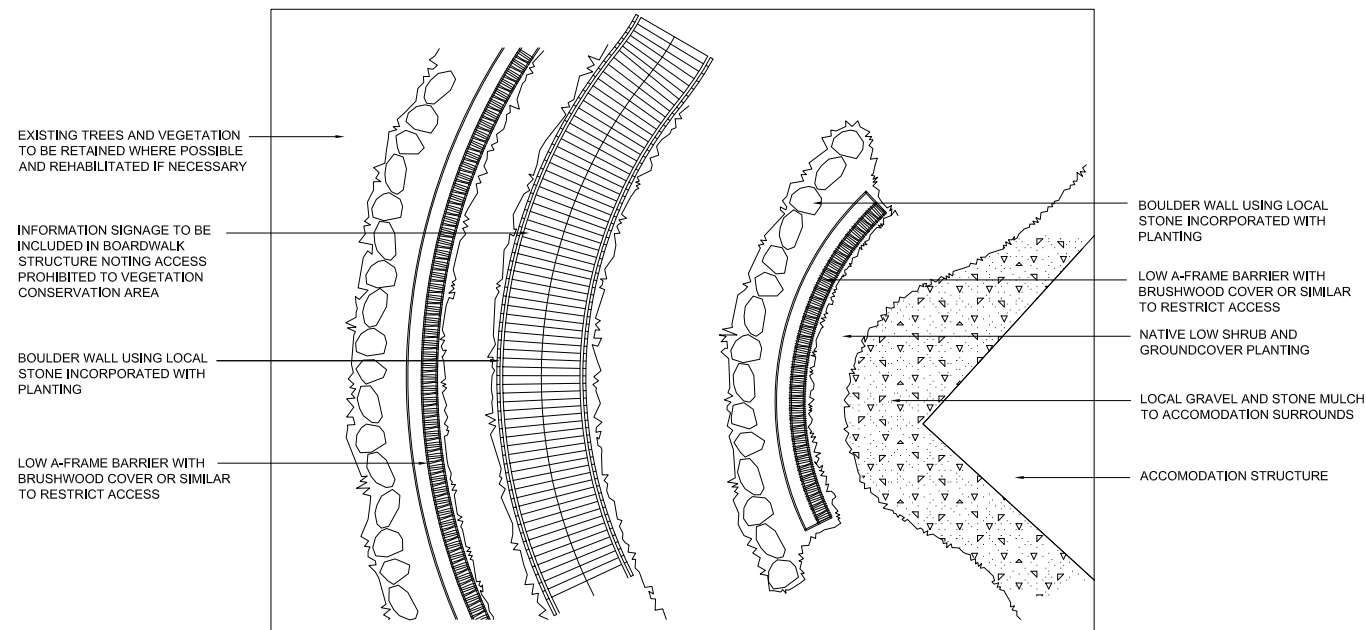
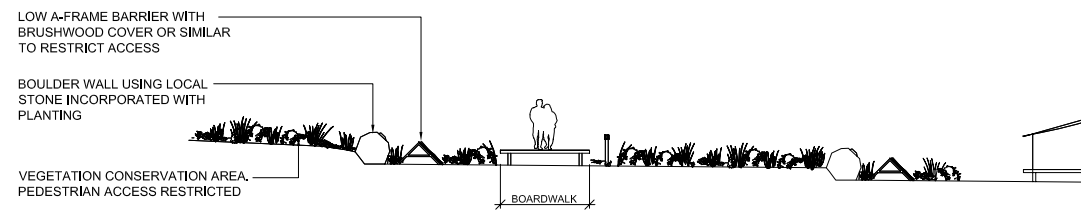
11 TYPICAL LANDSCAPE TREATMENT: ROAD 2
 PLAN / SECTION SCALE 1:125





12 TYPICAL LANDSCAPE TREATMENT: ECO RESORT
PLAN / SECTION SCALE 1:125





13 TYPICAL LANDSCAPE TREATMENT: ECO RESORT
 PLAN / SECTION SCALE 1:125

