

Template

Proposal Content Document

Table 1: General proposal content description

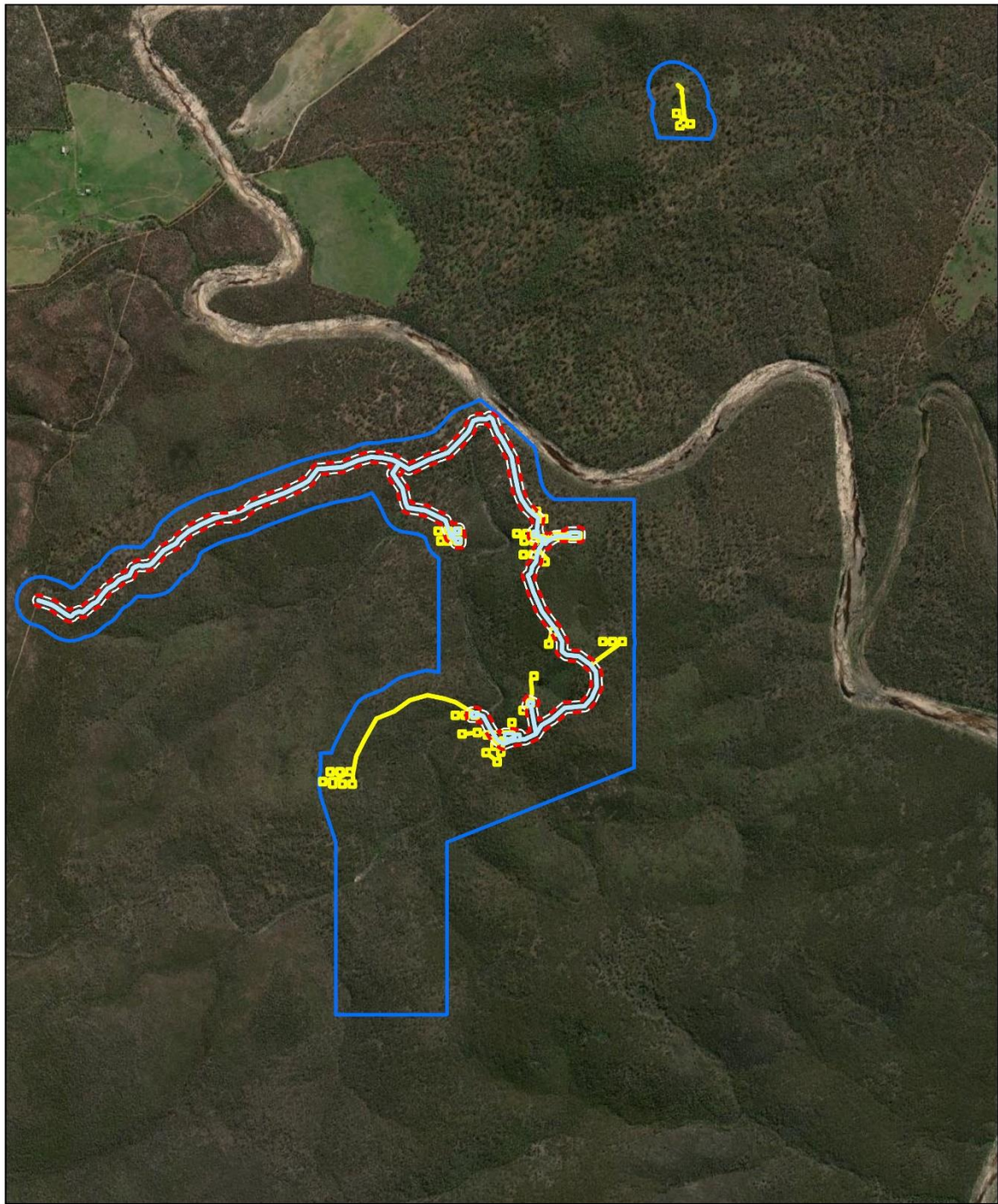
Proposal title	Ravensthorpe Lithium Project: Exploration Proposal	
Proponent name	Bulletin Resources Limited (ABN 81 144 590 858)	
Short description	Original Referral	Amended Referral
	Clearing of up to 7 ha of native vegetation within a 222 ha Project Area to provide for exploration access tracks and a drilling program on E74/655	The Proposal involves the disturbance of 2.3 ha for low-impact exploration within exploration tenement E74/680. The Proposal will require the temporary removal of 2.3 ha of native vegetation within a total Development Envelope of 22 ha.

Table 2: Proposal content elements

Proposal Element	Location/Description	Maximum Extent, Capacity or Range (Original Proposal)	Maximum Extent, Capacity or Range (Proposed Change)
Physical Elements			
Exploration Tracks and Pads	Figure 1 and Figure 2	7 ha	2.3 ha
Construction Elements			
N/A	N/A	N/A	N/A
Operational Elements			
N/A	N/A	N/A	N/A
Greenhouse Gas Emissions			
Scope 1 Emissions	565 t CO ₂ -e		565 t CO ₂ -e
Scope 2 Emissions	None		None
Scope 3 Emissions	None		None
Rehabilitation			
Rehabilitation of drill pads and tracks by: <ul style="list-style-type: none">• Removal of all rubbish (including drill sample bags) for off-site disposal• Re-contouring of land surfaces and on-contour ripping of compacted ground• Any sumps will be backfilled with excavated material and covered with topsoil and cleared vegetation• Re-spreading of stockpiled soil and vegetation material• Monitoring of rehabilitation (photographic records) to confirm successful rehabilitation• Rehabilitation measures are to be completed no later than six months after exploration concludes unless otherwise approved by DMIRS.• Disturbed areas will be reseeded with native species.			

Other elements which affect the extent of effects on the environment			
Proposal time	Maximum project life	2 years not including rehabilitation and associated monitoring/reporting)	12 months (not including rehabilitation and associated monitoring/reporting)

** Proponents should only provide realistic timeframes to avoid unnecessary change to proposal applications at referral (section 38C), assessment (section 43A) or post assessment (section 45C).*



Legend

- Development Envelope - Original Proposal
- Disturbance Footprint - Original Proposal
- Development Envelope - Revised Proposal
- Disturbance Footprint - Revised Proposal

Ravensthorpe Lithium Project

Figure 1 - Development Envelope and Disturbance Footprint (Overview)

Bulletin
RESOURCES

