

THIS DOCUMENT

This document has been produced by the Office of the Appeals Convenor as an electronic version of the original Statement for the proposal listed below as signed by the Minister and held by this Office. Whilst every effort is made to ensure its accuracy, no warranty is given as to the accuracy or completeness of this document.

The State of Western Australia and its agents and employees disclaim liability, whether in negligence or otherwise, for any loss or damage resulting from reliance on the accuracy or completeness of this document.

Copyright in this document is reserved to the Crown in right of the State of Western Australia. Reproduction except in accordance with copyright law is prohibited.

Published on: 13 February 2012

Statement No: 888

**STATEMENT TO AMEND CONDITIONS APPLYING TO A PROPOSAL
(PURSUANT TO THE PROVISIONS OF SECTION 46 OF THE
ENVIRONMENTAL PROTECTION ACT 1986)**

EXPANSION OF JURIEEN GYPSUM MINING OPERATION ML70/1161
SHIRE OF DANDARAGAN

Proposal: Refer to Ministerial Statement 730

Proponent: CSR Gyprock Fibre Cement

Proponent Address: 21 Sheffield Road
WELSHPOOL WA 6106

Assessment Number: 1916

Report of the Environmental Protection Authority: 1423

Previous report of the Environmental Protection Authority: 1219

Previous Statement Number: 730 (published on 27 September 2006)

The implementation of the proposal to which the above report of the Environmental Protection Authority relates is subject to the conditions and procedures contained in Ministerial Statement 730, as amended by the following:

8 Approved Area

8-1 The implementation of the proposal is restricted to the 12.7 hectare area designated "X" within Mining Lease 70/1161, as shown in Figure 2, Schedule 1, which is contained within the following co-ordinates, in eastings and northings:

Point 1 (308548.85 Easting; 6657270.11 Northing)

Point 2 (308622.89 Easting; 6657780.61 Northing)

Point 3 (308632.01 Easting; 6657843.00 Northing)

Point 4 (308857.64 Easting; 6657806.27 Northing)

Point 5 (308757.43 Easting; 6657238.31 Northing)

(Datum GDA 94; Projection MGA Zone 50)

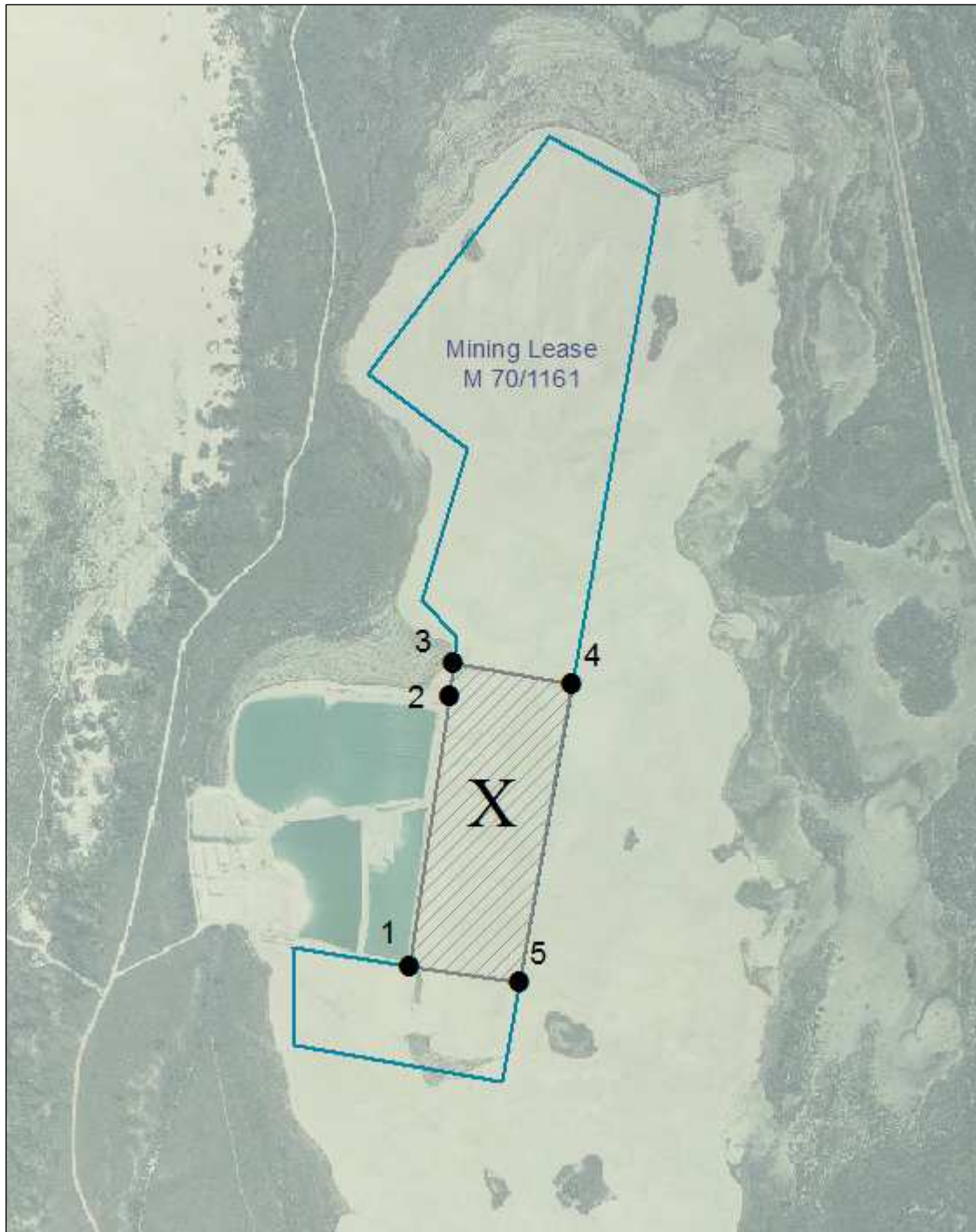


Figure 2: Implementation of the proposal restricted to 12.7 hectare area designated "X" within Mining Lease 70/1161 (refer to condition 8-1 for point coordinates and datum)

[Signed 13 February 2012]

**HON BILL MARMION MLA
MINISTER FOR ENVIRONMENT; WATER**