

**THIS DOCUMENT**

This document has been produced by the Office of the Appeals Convenor as an electronic version of the original Statement for the proposal listed below as signed by the Minister and held by this Office. Whilst every effort is made to ensure its accuracy, no warranty is given as to the accuracy or completeness of this document.

The State of Western Australia and its agents and employees disclaim liability, whether in negligence or otherwise, for any loss or damage resulting from reliance on the accuracy or completeness of this document.

Copyright in this document is reserved to the Crown in right of the State of Western Australia. Reproduction except in accordance with copyright law is prohibited.

Published on: 21 August 2015

Statement No. 1015

**STATEMENT THAT A PROPOSAL MAY BE IMPLEMENTED**  
**(*Environmental Protection Act 1986*)**

WEST ANGELAS - DEPOSIT A WEST AND DEPOSIT F – REVISED PROPOSAL

**Proposal:** West Angelas Deposit A west and Deposit F – Revised Proposal – a proposal to amend the West Angelas Iron Ore Project, the subject of Statement No. 970 dated 12 June 2014

**Proponent:** Robe River Mining Co. Pty. Ltd.  
Australian Company Number 008 694 246

**Proponent Address:** Robe River Mining Co. Pty Ltd.  
Central Park 152-158 St Georges Terrace  
PERTH WA 6000

**Assessment Number:** 2046

**Report of the Environmental Protection Authority:** 1551

**Previous Assessment Number:** 1914

**Previous Report of the Environmental Protection Authority:** 1508

**Previous Statement Number:** 970

Pursuant to section 45 of the *Environmental Protection Act 1986* (EP Act) it has been agreed that the Proposal described and documented in Table 1 of Schedule 1 may be implemented and that, pursuant to section 45B of EP Act, the implementation of the Proposal is subject to the implementation conditions in Ministerial Statement No. 970 dated 12 June 2014, and as further amended as follows.

**Insert** the following additional condition into Ministerial Statement No. 970:

## **10 Offsets**

- 10-1 In view of the significant residual impacts and risks as a result of implementation of the proposal, the proponent shall contribute funds to offset clearing of 'good to excellent' condition native vegetation, including the loss of habitat for conservation significant species, in the Hamersley IBRA subregion, and calculated pursuant to condition 10-2. This funding shall be provided to a government-established conservation offset fund or an alternative offset arrangement providing an equivalent outcome as determined by the Minister.
- 10-2 The proponent's contribution to the initiative identified in condition 10-1 shall be paid biennially, the first payment due two years after commencement of the additional ground disturbance defined in Table 2 of Schedule 1. The amount of funding will be \$750 AUD (excluding GST) per hectare of 'good to excellent' condition native vegetation cleared within the development envelope (delineated in Figure 1 and defined by the geographic coordinates in Schedule 2, within the Hamersley IBRA subregion.
- 10-3 The 4,667 ha of clearing of native vegetation previously approved under Ministerial Statement 970 is exempt from the requirement to offset under condition 10-1.
- 10-4 The proponent shall prepare and submit an Impact Reconciliation Procedure to the satisfaction of the CEO within six months of the date of this Statement, or as approved by the CEO.
- 10-5 The Impact Reconciliation Procedure required pursuant to condition 10-4 shall:
- (1) include a methodology to identify clearing of 'good to excellent' condition native vegetation in the Hamersley IBRA subregion.
  - (2) require the proponent to submit spatial data identifying areas of 'good to excellent' condition native vegetation that has been cleared;
  - (3) include a methodology for calculating the amount of clearing undertaken during each biennial time period; and
  - (4) state dates for the commencement of the biennial time period and for the submission of results of the Impact Reconciliation Procedure, to the satisfaction of the CEO.
- 10-6 The real value of contributions described in condition 10-2 will be maintained through indexation to the Perth Consumer Price Index (CPI), with the first adjustment to be applied to the first contribution.

[Signed 21 August 2015]

Albert Jacob MLA  
**MINISTER FOR ENVIRONMENT; HERITAGE**

**Table 1: Summary of the Proposal**

<b>Proposal Title</b>	West Angelas Deposit A west and Deposit F - Revised Proposal
<b>Short Description</b>	<p>Revision of the approved West Angelas Iron Ore Project located approximately 130 kilometres (km) northwest of Newman in the Pilbara Region of Western Australia.</p> <p>In addition to the proposal approved under Ministerial Statement 970, the revised proposal includes the development of the Deposits A west and F, and additional infrastructure such as waste rock dumps, access roads, accommodation and other supporting infrastructure.</p>

**Table 2: Location and authorised extent of physical and operational elements**

<b>Column 1</b>	<b>Column 2</b>	<b>Column 3</b>
<b>Element</b>	<b>Location</b>	<b>Authorised Extent</b>
Additional Mining Areas (Deposits A west and F)	Figure 1 and geographic coordinates in Schedule 2	Clearing no more than 920 hectares (ha) of native vegetation within 19,853 ha Development Envelope for Mining Activities in Ministerial Statement 970 and the 2,747 ha Additional Development Envelope.
Additional Waste Dumps	Figure 1 and geographic coordinates in Schedule 2	Clearing of no more than 1,853 ha within the 19,853 ha Development Envelope for Mining Activities in Ministerial Statement 970 and the 2,747 ha Additional Development Envelope.
Additional associated infrastructure, access and accommodation	Figure 1 and geographic coordinates in Schedule 2	Clearing of no more than 450 ha within the 19,853 ha Development Envelope for Mining Activities in Ministerial Statement 970 and the 2,747 ha Additional Development Envelope.

**Table 3: Abbreviations and Definitions**

<b>Acronym or Abbreviation</b>	<b>Definition or Term</b>
CPI	Consumer Price Index
ha	Hectares
km	kilometre
GL/a	gigalitre per annum
CEO	The Chief Executive Officer of the Department of the Public Service of the State responsible for the administration of section 48 of the <i>Environmental Protection Act 1986</i> , or his delegate.
EPA	Environmental Protection Authority
EP Act	<i>Environmental Protection Act 1986</i>

**Figures (attached)**

Figure 1 Additional Development Envelope (This figure is a representation of the coordinates in Schedule 2)

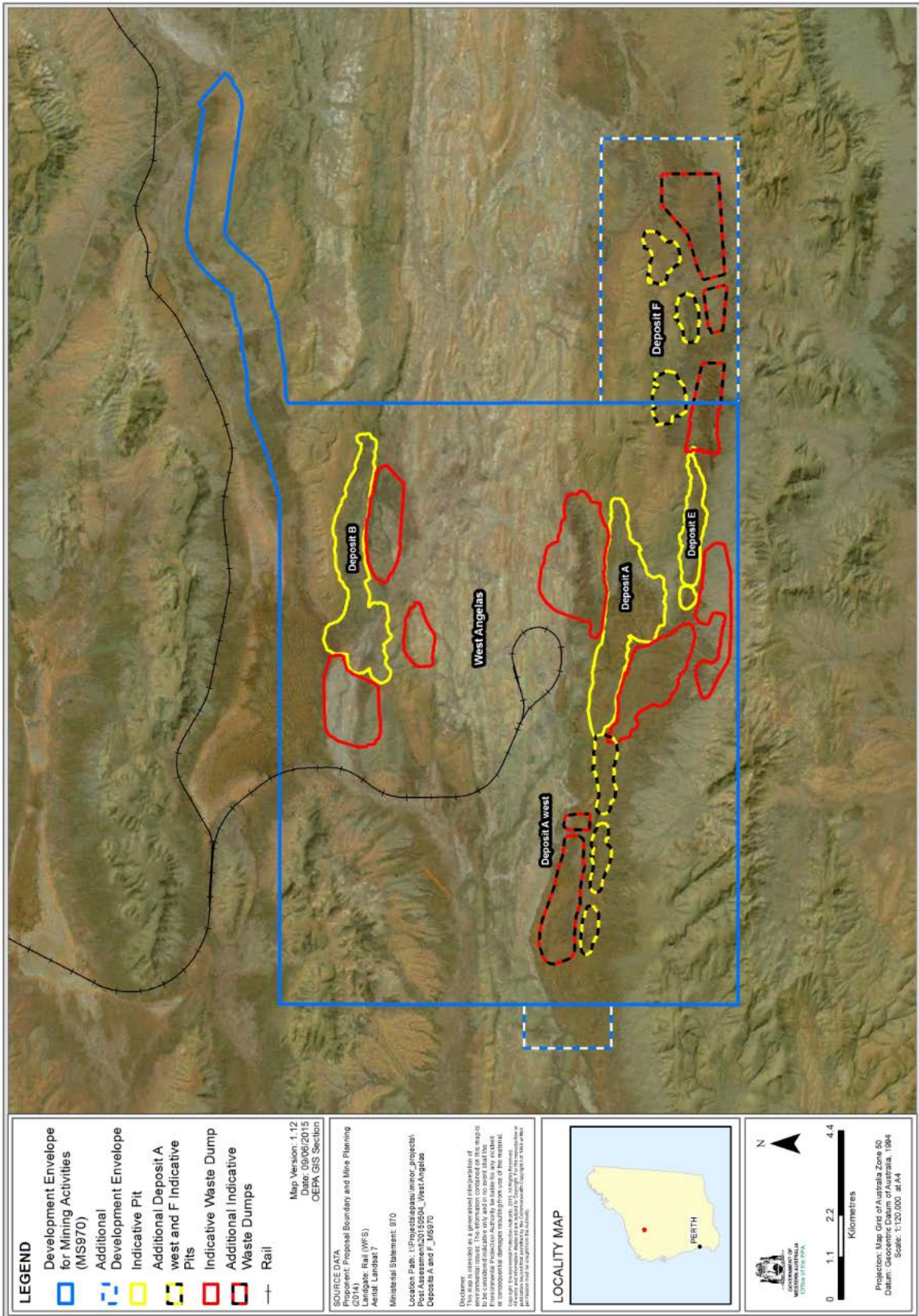


Figure 1 Additional Development Envelope

## **Schedule 2**

### **Geographic spatial data coordinates**

Coordinates defining the Additional Development Envelope are held by the Office of the Environmental Protection Authority, Document Reference Number 2015-0001166811, dated 12 June 2015.

## **Appendix 3**

### **Proponent's API Environmental Review documentation**

Provided on CD in hardcopies of this report and on the EPA's website at  
[www.epa.wa.gov.au](http://www.epa.wa.gov.au)