

THIS DOCUMENT

This document has been produced by the Office of the Appeals Convenor as an electronic version of the original Statement for the proposal listed below as signed by the Minister and held by this Office. Whilst every effort is made to ensure its accuracy, no warranty is given as to the accuracy or completeness of this document.

The State of Western Australia and its agents and employees disclaim liability, whether in negligence or otherwise, for any loss or damage resulting from reliance on the accuracy or completeness of this document.

Copyright in this document is reserved to the Crown in right of the State of Western Australia. Reproduction except in accordance with copyright law is prohibited.

Published on: 17 June 2015

Statement No. 1007

**STATEMENT TO CHANGE THE IMPLEMENTATION CONDITIONS APPLYING TO A
PROPOSAL
(Section 46 of the *Environmental Protection Act 1986*)**

HEAVY MINERAL SANDS MINE, BEENUP,
SHIRE OF AUGUSTA – MARGARET RIVER

Proposal: To rehabilitate the BHP Titanium Minerals Beenup Project Area located 17 km north-east of Augusta in the Shire of Augusta-Margaret River.

Proponent: BHP Titanium Minerals Pty Ltd
Australian Company Number 000 154 067

Proponent Address: Unit 1, 8 Owen Tucker Lane
MARGARET RIVER WA 6285

Report of the Environmental Protection Authority: 1545

Preceding Statements Relating to this Proposal: 140 and 434

Pursuant to section 45 of the *Environmental Protection Act 1986* (EP Act), as applied by s46(8), it has been agreed that implementation conditions set out in Ministerial Statement No. 434, be changed as specified in this Statement.

Words and expressions used in this Statement shall have the same respective meanings as in the EP Act or as provided for in Schedule 1 of this Statement.

This Statement authorises the implementation of the proposal described and documented in Table 1 and Table 2 of Schedule 1, and Schedule 2. The implementation of the proposal is subject to the following implementation conditions and procedures which replace and supersede all previous conditions and procedures of Statement 434.

1 Proposal Implementation

- 1-1 When implementing the proposal, the proponent shall not exceed the authorised extent of the proposal as defined in Table 2 in Schedule 1, unless amendments to the proposal and the authorised extent of the proposal have been approved under the EP Act.

2 Contact Details

- 2-1 The proponent shall notify the Chief Executive Officer (CEO) of any change of its name, physical address or postal address for the serving of notices or other correspondence within twenty eight (28) days of such change. Where the proponent is a corporation or an association of persons, whether incorporated or not, the postal address is that of the principal place of business or of the principal office in the State.

3 Compliance Reporting

- 3-1 The proponent shall prepare, submit and maintain a Compliance Assessment Plan to the CEO at least three (3) months prior to the Compliance Assessment Report required by condition 3-6.

- 3-2 The Compliance Assessment Plan shall indicate:

- (1) the frequency of compliance reporting;
- (2) the approach and timing of compliance assessments;
- (3) the retention of compliance assessment;
- (4) the method of reporting of potential non-compliance and corrective actions taken;
- (5) the table of contents of Compliance Assessment Reports; and
- (6) public availability of Compliance Assessment Reports.

- 3-3 After receiving notice in writing from the CEO that the Compliance Assessment Plan satisfies requirements of condition 3-2 the proponent shall assess compliance with conditions in accordance with the Compliance Assessment Plan required by condition 3-1.

- 3-4 The proponent shall retain reports of all compliance assessments described in the Compliance Assessment Plan required by condition 3-1 and shall make those reports available when requested by the CEO.

- 3-5 The proponent shall advise the CEO of any potential non-compliance within seven (7) days of that non-compliance being known.

- 3-6 The proponent shall submit to the CEO Compliance Assessment Reports addressing compliance in the previous calendar year. The first Compliance Assessment Report shall be submitted six (6) months from the date of issue of this Statement then annually from the date of submission of the first Compliance Assessment Report, or as agreed in writing by the CEO.

The Compliance Assessment Report shall:

- (1) be endorsed by the proponent's Chief Executive Officer or a person delegated to sign on the Chief Executive Officer's behalf;
- (2) include a statement as to whether the proponent has complied with the conditions;
- (3) identify all potential non-compliances and describe corrective and preventive actions taken;
- (4) be made publicly available in accordance with the approved Compliance Assessment Plan; and
- (5) indicate any proposed changes to the Compliance Assessment Plan required by condition 3-1.

4 Public Availability of Data

- 4-1 Subject to condition 4-2, within a reasonable time period approved by the CEO of the issue of this Statement and for the remainder of the life of the proposal, the proponent shall make publicly available, in a manner approved by the CEO, all validated environmental data (including sampling design, sampling methodologies, empirical data and derived information products (e.g. maps)) relevant to the assessment of this proposal and implementation of this Statement.

- 4-2 If any data referred to in condition 4-1 contains particulars of:

- (1) a secret formula or process; or
- (2) confidential commercially sensitive information;

the proponent may submit a request for approval from the CEO to not make these data publicly available. In making such a request, the proponent shall provide the CEO with an explanation and reasons why the data should not be made publicly available.

5 Rehabilitation and Decommissioning

- 5-1 The proponent shall ensure that the mine is decommissioned and rehabilitated in an ecologically sustainable manner.
- 5-2 The proponent shall implement the proposal in accordance with the "*Beenup Rehabilitation Project Environmental Management Programme 2012*", dated June 2012, or subsequent revisions approved by the CEO.

- 5-3 Revisions to the rehabilitation goals and completion criteria in the Environmental Management Programme may be approved by the CEO on the advice of the Department of Mines and Petroleum.
- 5-4 The proponent shall implement the revised rehabilitation goals; completion criteria and end land uses approved by the CEO.
- 5-5 The proponent shall make the Environmental Management Programme required by condition 5-2 publicly available, in a manner approved by the CEO.

[Signed 17 June 2015]

Albert Jacob MLA
MINISTER FOR ENVIRONMENT; HERITAGE

Table 1: Summary of the Proposal

Proposal title	Heavy Mineral Sands Mine, Beenup, Shire of Augusta – Margaret River
Short description	The proposal is to rehabilitate the BHP Titanium Minerals Beenup Project Area located 17 km north-east of Augusta in the Shire of Augusta-Margaret River (Figure 1). The Beenup Rehabilitation Project is located on retained portions of Mining Leases 70/574 and 70/575 (Figure 2).

Table 2: Location and authorised extent of physical and operational elements

Element	Location	Authorised Extent
Rehabilitation Area	Figure 2	Total rehabilitation area of no less than 336.2 ha within a 697 ha project envelope, comprising: <ul style="list-style-type: none"> • Former dredge ponds (now permanent wetlands) – 71.50 ha • Mine Development Storage Area – 42.60 ha • Trial Mining Areas – 25.46 ha • Disturbed but un-mined areas (decommissioned dams, stockpile areas, general project related disturbance) rehabilitated to pasture, native vegetation and ephemeral wetlands – 196.62 ha
Associated infrastructure (Access)	Figure 2	1 ha

Table 3: Abbreviations and Definitions

Acronym or Abbreviation	Definition or Term
CEO	The Chief Executive Officer of the Department of the Public Service of the State responsible for the administration of section 48 of the <i>Environmental Protection Act 1986</i> , or delegate.
EP Act	<i>Environmental Protection Act 1986</i>
ha	hectare
km	kilometre

Figures (attached)

Figure 1 – Regional Location of Beenup Rehabilitation Project

Figure 2 – Beenup Rehabilitation Project Envelope

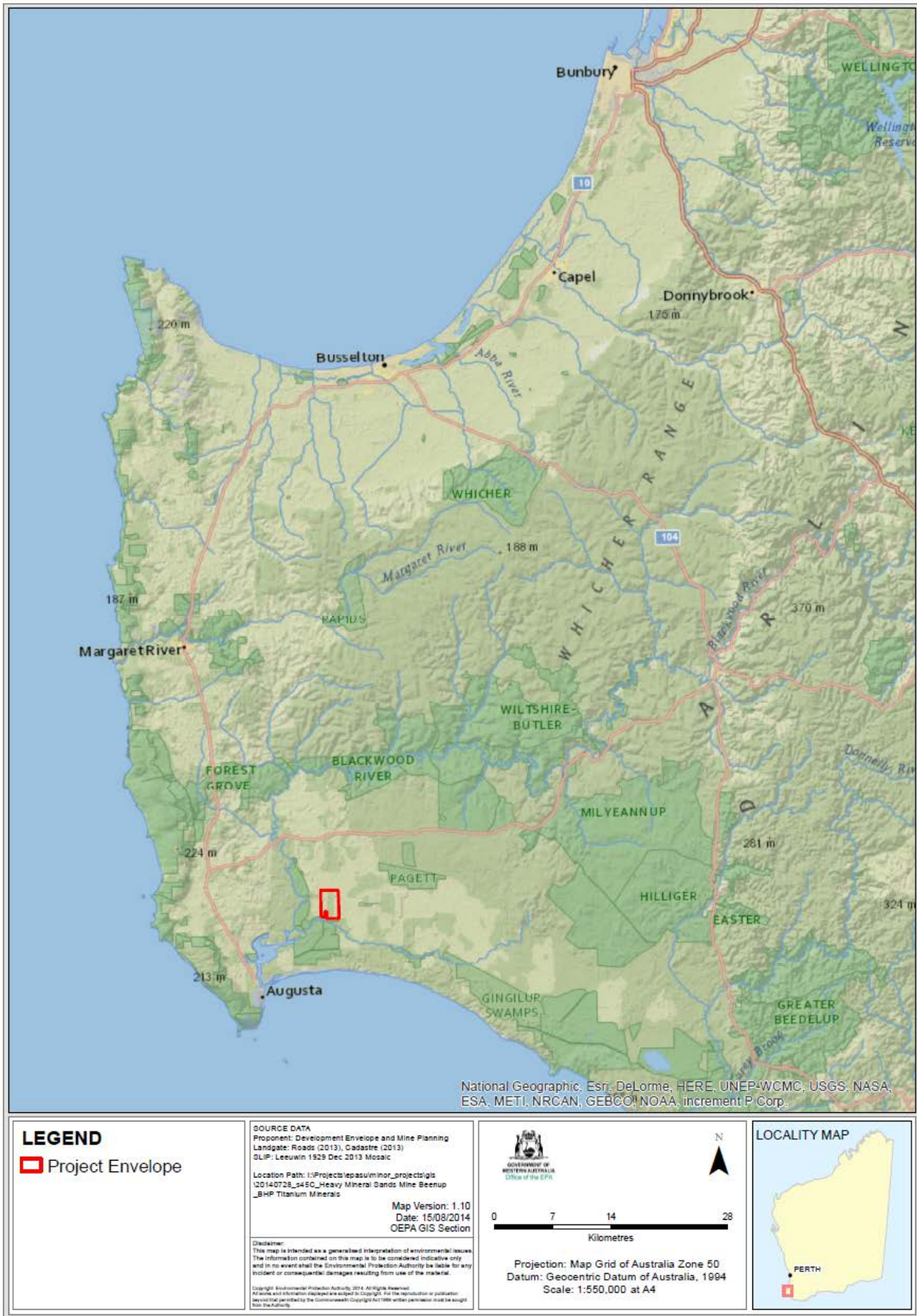


Figure 1 – Regional Location of Beenup Rehabilitation Project

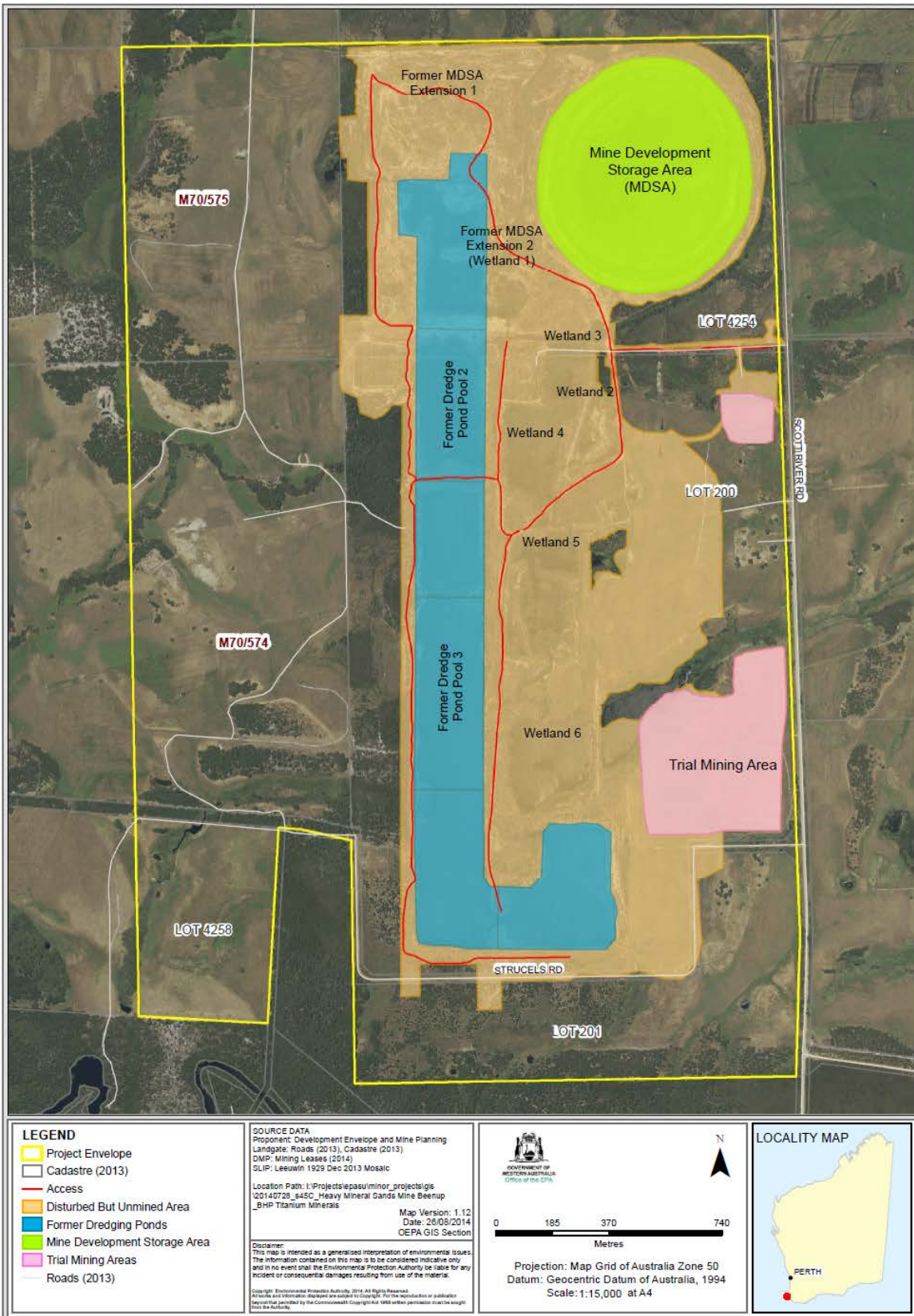


Figure 2 – Beenup Rehabilitation Project Envelope

Table 4: Coordinates defining Beenup Rehabilitation Project Envelope [Map Grid of Australia MGA94 zone 50]

Coordinate No.	Easting	Northing
1	338927	6209503
2	338927	6209503
3	338891	6208864
4	338470	6208888
5	338433	6211023
6	338413	6212056
7	340525	6212091
8	340560	6211099
9	340562	6211059
10	340617	6209506
11	340619	6209466
12	340620	6209426
13	340622	6209386
14	340631	6209151
15	340626	6208980
16	340621	6208779
17	340620	6208761
18	340619	6208690
19	339177	6208666
20	339164	6209462
21	338997	6209498
22	338947	6209502
23	338927	6209503