

**THIS DOCUMENT**

This document has been produced by the Office of the Appeals Convenor as an electronic version of the original Statement for the proposal listed below as signed by the Minister and held by this Office. Whilst every effort is made to ensure its accuracy, no warranty is given as to the accuracy or completeness of this document.

The State of Western Australia and its agents and employees disclaim liability, whether in negligence or otherwise, for any loss or damage resulting from reliance on the accuracy or completeness of this document. Copyright in this document is reserved to the Crown in right of the State of Western Australia. Reproduction except in accordance with copyright law is prohibited.

Published on: 24 September 2014

Statement No. 982

**STATEMENT THAT A PROPOSAL MAY BE IMPLEMENTED  
(PURSUANT TO THE PROVISIONS OF SECTION 46 OF THE  
ENVIRONMENTAL PROTECTION ACT 1986)**

YILGARN OPERATIONS – WINDARLING RANGE, MT JACKSON RANGE AND  
DECEPTION DEPOSIT – SHIRE OF YILGARN AND SHIRE OF MENZIES

**Proposal:** The proposal is to develop and operate iron ore mines at the Windarling Range, the Mt Jackson Range and the Deception Deposit, located in the Shire of Yilgarn and the Shire of Menzies.

**Proponent:** Cliffs Asia Pacific Iron Ore Pty Ltd (ACN 001 892 995)

**Proponent Address:** Level 11  
1 William Street  
PERTH WA 6000

**Assessment Number:** 2011

**Previous Assessment Number:** 1374, 1753, 1761, 1871, 1872, 1887

**Report of the Environmental Protection Authority Number:** 1521

**Previous Report Numbers:** 1082, 1303, 1347, 1405, 1426, 1433, 1438

**Previous Statement Numbers:** 627, 802, 843, 874, 900, 907, 909

This Statement authorises the implementation of the Proposal described and documented in Columns 1 and 2 of Table 2 of Schedule 1. The implementation of the Proposal is subject to the following implementation conditions and procedures which replace and supersede all previous conditions and procedures of Statements 627, 802, 843, 874, 900, 907, and 909. Schedule 2 details definitions of terms and phrases used in the implementation conditions and procedures.

## **1 Proposal Implementation**

1-1 When implementing the proposal, the proponent shall not exceed the authorised extent of the proposal as defined in Column 3 of Table 2 in Schedule 1, unless amendments to the proposal and the authorised extent of the proposal have been approved under the *Environmental Protection Act 1986* (EP Act).

## **2 Contact Details**

- 2-1 The proponent shall notify the CEO of any change of its name, physical address or postal address for the serving of notices or other correspondence within 28 days of such change. Where the proponent is a corporation or an association of persons, whether incorporated or not, the postal address is that of the principal place of business or of the principal office in the State.

## **3 Compliance Reporting**

- 3-1 The proponent shall maintain a Compliance Assessment Plan to the satisfaction of the CEO.
- 3-2 The proponent shall submit to the CEO the Compliance Assessment Plan required by condition 3-1 at least six months prior to the first compliance assessment report required by condition 3-6.

The Compliance Assessment Plan shall indicate:

- (1) the frequency of compliance reporting;
  - (2) the approach and timing of compliance assessments;
  - (3) the retention of compliance assessments;
  - (4) the method of reporting of potential non-compliances and corrective actions taken; and
  - (5) the table of contents of compliance assessment reports.
- 3-3 The proponent shall assess compliance with conditions in accordance with the Compliance Assessment Plan required by condition 3-1.
- 3-4 The proponent shall retain reports of all compliance assessments described in the compliance assessment plan required by condition 3-1 and shall make those reports available when requested by the CEO.
- 3-5 The proponent shall advise the CEO of any potential non-compliance within seven days of that non-compliance being known.
- 3-6 The proponent shall submit to the CEO an annual Compliance Assessment Report by 30 April of each year, or as otherwise agreed by the CEO, addressing the period of the preceding calendar year. The compliance assessment report shall:
- (1) be endorsed by the proponent's Managing Director / General Manager / Chief Executive Officer or a person delegated to sign on the Managing Director's / General Manager's / Chief Executive Officer's behalf;
  - (2) address the proponent's compliance with each condition of this Statement;
  - (3) describe corrective and preventative actions taken in the event of a non-compliance; and
  - (4) indicate any proposed changes to the Compliance Assessment Plan required by condition 3-1.

## **4 Public Availability of Plans and Reports**

- 4-1 Subject to condition 4-2, within a reasonable time period approved by the CEO of the issue of this Statement and for the remainder of the life of the proposal,

the proponent shall make publicly available, in a manner approved by the CEO, all environmental plans and reports required under this Statement.

4-2 If any parts of the plans or reports, referred to in condition 4-1 contains particulars of:

- (1) a secret formula or process; or
- (2) confidential commercially sensitive information;

the proponent may submit a request for approval from the CEO to not make those parts of the plans or reports publically available. In making such a request the proponent shall provide the CEO with an explanation and reasons why those parts of the plans or reports should not be made publically available.

## **5 Environmental Management Plans**

5-1 The proponent shall implement the proposal in accordance with the following approved Environmental Management Plans until condition 6-1 and condition 9-1 have been complied with, or unless otherwise agreed by the CEO:

- (1) Koolyanobbing Expansion Project – Northern Tenements Transport Corridor (Haul Road) Environmental Management Plan (2010).
- (2) Koolyanobbing Iron Ore Project – Biodiversity Research and Management Plan (2009).
- (3) Koolyanobbing Iron Ore Project – Malleefowl Conservation Plan (2009).
- (4) Yilgarn Operations Land Clearing Management Plan (2011).
- (5) Yilgarn Operations Dust Management Plan (2011).
- (6) Yilgarn Operations Fire Management Plan (2011).
- (7) Yilgarn Operations Weed Management Plan (2011).
- (8) Mt Jackson J1 Proposed Flora and Vegetation Monitoring Program (2012).

## **6 Flora and Vegetation Management Plan**

6-1 The proponent shall ensure that the implementation of the proposal is carried out in a manner that minimises the direct and indirect impacts to conservation significant flora and vegetation through implementation of the Flora and Vegetation Management Plan required by conditions 6-2 and 6-3.

6-2 Within 12 months of the date of this Statement, or as otherwise agreed by the CEO, the proponent shall submit to the CEO a Flora and Vegetation Management Plan for the Yilgarn Operations, to the requirements of the CEO, in consultation with Parks and Wildlife.

6-3 The Flora and Vegetation Management Plan shall include:

- (1) the management actions, targets and criteria to be applied to avoid and/or minimise the environmental impacts to conservation significant flora and vegetation from processes including, but not limited to, land clearing, changes in surface water flows, introduced flora (weeds), dust, fire, saline water and introduced fauna which may result from implementation of the proposal; and

- (2) monitoring to measure the performance of the management actions against the targets and criteria identified in the Flora and Vegetation Management Plan.
- 6-4 The proponent shall implement the approved Flora and Vegetation Management Plan required by condition 6-2, and continue implementation until otherwise agreed by the CEO, on advice of Parks and Wildlife.
- 6-5 In the event that monitoring required by condition 6-3 indicates a decline in the health or abundance of conservation significant flora and/or vegetation outside areas to be cleared the proponent shall:
  - (1) report such findings to the CEO within 21 days of the decline being identified;
  - (2) provide information which allows determination of the cause of the decline;
  - (3) submit actions to be undertaken to remediate the decline to the CEO within 21 days of the determination being made by the CEO if the decline is determined by the CEO to be a result of activities undertaken in implementing the proposal; and
  - (4) implement the actions to remediate the decline of conservation significant flora and vegetation upon approval of the CEO, on advice of Parks and Wildlife, and shall continue until such time as the CEO, on advice of Parks and Wildlife, determines that the remedial actions may cease.
- 6-6 Revisions to the Flora and Vegetation Management Plan may be approved by the CEO on the advice of Parks and Wildlife.
- 6-7 The proponent shall implement approved revisions of the Flora and Vegetation Management Plan required by condition 6-6.
- 7 Restricted Areas and Management of *Tetratheca paynterae* ssp. *paynterae* at the Windarling Range**
- 7-1 For the purposes of protecting the Rare Flora species *Tetratheca paynterae* ssp. *paynterae*, no ground disturbing activity shall occur in the area designated 'Area A', as identified in Figure 2 of Schedule 1.
- 7-2 For the purposes of protecting the Rare Flora species *Tetratheca paynterae* ssp. *paynterae* the proponent shall ensure that no ground disturbing activity shall occur in the area designated 'Area B' identified on Figure 2 of Schedule 1, unless the requirements of conditions 7-3, 7-4 and 7-5 have been complied with.
- 7-3 Where the proponent seeks to undertake ground disturbing activity within 'Area B', the proponent shall prepare a *Tetratheca paynterae* ssp. *paynterae* Research and Management Plan and a *Tetratheca paynterae* ssp. *paynterae* Recovery Plan to the requirements of the Minister for Environment on the advice of Parks and Wildlife.
- 7-4 The *Tetratheca paynterae* ssp. *paynterae* Research and Management Plan required by condition 7-3 shall include:
  - (1) monitoring of the numbers of *Tetratheca paynterae* ssp. *paynterae* individuals, their health, viability of the population, and reproductive success within 'Area A' and 'Area B';

- (2) research into the ecology and potential translocation of *Tetratheca paynterae* ssp. *paynterae* with a focus on the specific natural habitat requirements of the species;
  - (3) research into the pollination vector(s) of *Tetratheca paynterae* ssp. *Paynterae* to identify the vector(s) and the specific ecological requirements;
  - (4) management measures to protect the health, viability, and reproductive success of the *Tetratheca paynterae* ssp. *paynterae* population; and
  - (5) measures to support the secure conservation tenure for the remaining population of *Tetratheca paynterae* ssp. *paynterae*.
- 7-5 The proponent shall implement the approved *Tetratheca paynterae* ssp. *paynterae* Research and Management Plan and *Tetratheca paynterae* ssp. *paynterae* Recovery Plan required by condition 7-3, until advised by the Minister for Environment that implementation may cease.
- 7-6 Ground disturbing activity within the area designated 'Area B' may only occur when the Minister for Environment, on the advice of Parks and Wildlife, is satisfied and provides written advice stating that it has been demonstrated that ground disturbing activity in whole or part of the area designated 'Area B', will not result in a reduction in the viability of the population of *Tetratheca paynterae* ssp. *paynterae*, and may proceed.
- 7-7 The proponent shall report the results and outcomes of the *Tetratheca paynterae* ssp. *paynterae* Research and Management Plan and *Tetratheca paynterae* ssp. *paynterae* Recovery Plan annually to Parks and Wildlife.
- 8 Mitigation of impacts to *Calytrix viscida* for the Deception Deposit**
- 8-1 Prior to impacting the Priority Flora species *Calytrix viscida* at the Deception Deposit, the proponent shall collect seeds and plant material of the *Calytrix viscida* that will be impacted. The seeds and plant material will be stored in a facility that is capable of maintaining their viability for use during rehabilitation works at the Deception Deposit.
- 8-2 Where the *Calytrix viscida* is impacted by mining at the Deception Deposit, the proponent shall undertake a targeted regional flora survey to the satisfaction of the CEO to improve knowledge of the presence and abundance of *Calytrix viscida* outside of the approved disturbance area for the Deception Deposit. The survey shall be conducted in accordance with Environmental Protection Authority Guidance Statement 51 *Terrestrial Flora and Vegetation Surveys for Environmental Impact Assessment in Western Australia* (June 2004) or its revisions.
- 8-3 Unless otherwise agreed with the CEO, the proponent shall report to the CEO on the findings of the targeted regional flora survey required under condition 8-2 within 24 months of impact to *Calytrix viscida*.
- 9 Fauna Management Plan**
- 9-1 The proponent shall ensure that the implementation of the proposal is carried out in a manner that minimises the direct and indirect impacts to conservation significant fauna through implementation of the Fauna Management Plan required by conditions 9-2 and 9-3.

- 9-2 Within 12 months of the date of this Statement, or as otherwise agreed by the CEO, the proponent shall submit to the CEO a Fauna Management Plan for the Yilgarn Operations to the requirements of the CEO, in consultation with Parks and Wildlife.
- 9-3 The Fauna Management Plan shall include:
- (1) the management actions, targets and/or criteria to be applied to avoid and/or minimise the environmental impacts to conservation significant fauna, including Malleefowl (*Leipoa ocellata*), from processes including, but not limited to, land clearing, changes in surface water flows, introduced flora (weeds), dust, fire, saline water and introduced fauna resulting from implementation of the proposal; and
  - (2) monitoring to measure and report the performance of management actions against the targets and/or criteria identified in condition 9-3(1).
- 9-4 The proponent shall implement the Fauna Management Plan required by condition 9-2, and continue implementation unless otherwise agreed by the CEO, on the advice of Parks and Wildlife.
- 9-5 In the event that monitoring undertaken in accordance with condition 9-3 indicates a decline in the health or abundance of conservation significant fauna, including Malleefowl (*Leipoa ocellata*), populations within the proposal area:
- (1) report such findings to the CEO within 21 days of the decline being identified;
  - (2) provide information which allows determination of the cause of the decline;
  - (3) submit actions to be undertaken to remediate the decline to the CEO within 21 days of the determination being made by the CEO if the decline is determined by the CEO to be a result of activities undertaken in implementing the proposal; and
  - (4) implement the actions to remediate the decline of conservation significant fauna upon approval of the CEO, on advice of Parks and Wildlife, and shall continue until such time as the CEO, on advice of Parks and Wildlife, determines that the remedial actions may cease.
- 9-6 Revisions to the Fauna Management Plan may be approved by the CEO on the advice of Parks and Wildlife.
- 9-7 The proponent shall implement approved revisions of the Fauna Management Plan required by condition 9-6.
- 10 Residual Impacts and Risk Management Measures (Environmental Offsets)**
- 10-1 To offset the impact of mining at the Windarling Range W1 deposit on the landscape and geological features of the range and local area and related conservation values, within 12 months following the purchase of the former Ennuin Pastoral Lease by Parks and Wildlife, the proponent shall make a financial contribution of \$50,000 AUD per year over a 5-year period (total

\$250,000 AUD) to Parks and Wildlife, to assist with the management of the former Ennuin Pastoral Lease.

- 10-2 To offset the impact of mining at the Windarling Range W4 East deposit on the Rare Flora species *Ricinocarpus brevis*, the proponent shall provide a minimum financial contribution of \$640,000 AUD over a five year period for the purpose of undertaking works that seek to contribute to the scientific understanding of the long term recovery and protection of sustainable populations of *Ricinocarpus brevis* at the Windarling Range. The works will commence within 12 months following impact to *Ricinocarpus brevis* at the Windarling Range W4 East Deposit. The works will be implemented in consultation with Parks and Wildlife and to the satisfaction of the CEO.
- 10-3 To offset the impact of mining at the Windarling Range W4 East deposit on the Rare Flora species *Ricinocarpus brevis*, the proponent will provide a minimum financial contribution of \$40,000 AUD for the translocation of a proportion of individuals of *Ricinocarpus brevis* that will be removed by mining of the Windarling Range W4 East Deposit. The number of individuals to be translocated will be subject to practicability considerations such as plant size and site accessibility. A translocation plan shall be developed and implemented by the proponent in consultation with Parks and Wildlife, and to the satisfaction of the CEO.

## **11 Mine Closure and Rehabilitation**

- 11-1 The proponent shall ensure that the mining operations are closed, decommissioned and rehabilitated in an ecologically sustainable manner, consistent with agreed post-mining outcomes and land uses, without unacceptable liability to the State of Western Australia through implementation of a Mine Closure Plan required by condition 11-2.
- 11-2 Within 12 months of the date of this Statement, or as otherwise agreed by the CEO, the proponent shall submit a Mine Closure Plan for the Yilgarn Operations to the requirements of the CEO, in consultation with Parks and Wildlife and the DMP. The Mine Closure Plan shall:
- (1) be prepared in accordance with the *Guidelines for Preparing Mine Closure Plans, June 2011* (Department of Mines and Petroleum and Environmental Protection Authority) or its revisions;
  - (2) detail the methods to be used for progressive rehabilitation of disturbed areas with vegetation composed of native species of local provenance such that the percentage cover of living vegetation is comparable to natural vegetation surrounding the proposal;
  - (3) detail the methods, including monitoring and recording programs for feral animal populations and the health and condition of conservation significant flora and vegetation, and conservation significant fauna species, including Malleefowl (*Leipoa ocellata*), which will be used to ensure that surface water within pit lakes does not result in an increase in introduced fauna to a level that may have a measurable impact on conservation significant flora and vegetation or conservation significant fauna species;

- (4) detail the methods to ensure the effectiveness of backfilling in preventing the presence of permanent surface water in those pits approved for backfilling, following the completion of backfilling, unless otherwise approved by the CEO, in consultation with Parks and Wildlife; and
  - (5) examine opportunities for backfilling the Windarling W3/5 pit voids above the watertable, to ensure that impacts on important conservation values and any long term liabilities for future management are minimised.
- 11-3 The proponent shall implement the approved Mine Closure Plan required by condition 11-2 and continue implementation until otherwise agreed by the CEO, on the advice of Parks and Wildlife and the DMP.
- 11-4 Revisions to the Mine Closure Plan may be approved by the CEO on the advice of Parks and Wildlife and the DMP.
- 11-5 The proponent shall implement approved revisions of the Mine Closure Plan required by condition 11-4.

[Signed 24 September 2014]

Albert Jacob MLA  
**MINISTER FOR ENVIRONMENT; HERITAGE**



## Schedule 1

**Table 1: Summary of the Proposal**

<b>Proposal Title</b>	Yilgarn Operations – Windarling Range, Mt Jackson Range and Deception Deposit – Shire of Yilgarn and Shire of Menzies.
<b>Short Description</b>	The proposal is to develop and operate above and below groundwater table open cut iron ore mine pits, waste rock landforms, ore stockpiles, haul roads and support infrastructure at the W1, W2, W3/5, W4 West and W4 East pits at the Windarling Range, and the J1, J2 and J3 pits at the Mt Jackson Range; and the Deception Deposit; located in the Shire of Yilgarn and the Shire of Menzies.

**Table 2: Location and authorised extent of physical and operational elements**

<b>Column 1</b>	<b>Column 2</b>	<b>Column 3</b>
<b>Element</b>	<b>Location</b>	<b>Authorised Extent</b>
Iron ore mine pits	<p>Windarling Range – as defined in Figure 2 and by the spatial coordinates in Table 1 of Schedule 3.</p> <p>Mt Jackson Range – as defined in Figure 3 and by the spatial coordinates in Table 2 of Schedule 3.</p> <p>Deception Deposit – as defined in Figure 4 and by the spatial coordinates in Table 3 of Schedule 3.</p>	<p>Not more than 233 hectares.</p> <ul style="list-style-type: none"> <li>W1 East, W2 and W3/5 to be mined below groundwater table.</li> <li>W2 to be backfilled above groundwater table.</li> <li>W1 West, W4 West and W4 East to be mined above the groundwater table.</li> </ul> <p>Not more than 133 hectares.</p> <ul style="list-style-type: none"> <li>J1 East, J2 and J3 to be mined above groundwater table.</li> <li>J1 West to be mined below groundwater table.</li> </ul> <p>Not more than 118 hectares.</p> <ul style="list-style-type: none"> <li>Deception Deposit to be mined below groundwater table.</li> </ul>
Waste Rock Landforms	<p>Windarling Range – See Figure 2.</p> <p>Mt Jackson Range – See Figure 3.</p> <p>Deception Deposit – See Figure 4.</p>	<p>Not more than 410 hectares.</p> <p>Not more than 263 hectares.</p> <p>Not more than 258 hectares.</p>
Associated infrastructure (includes internal mine roads, ore stockpiles, rehabilitation material stockpiles, airstrip and mine camp)	<p>Windarling Range – See Figure 2.</p> <p>Mt Jackson Range – See Figure 3.</p> <p>Deception Deposit – See Figure 4.</p>	<p>Not more than 204 hectares, including 25.1 hectares for Windarling Range Airstrip.</p> <p>Not more than 259 hectares.</p> <p>Not more than 53 hectares.</p>
Haul Roads	Figures 1 to 4.	Not more than 609 hectares.

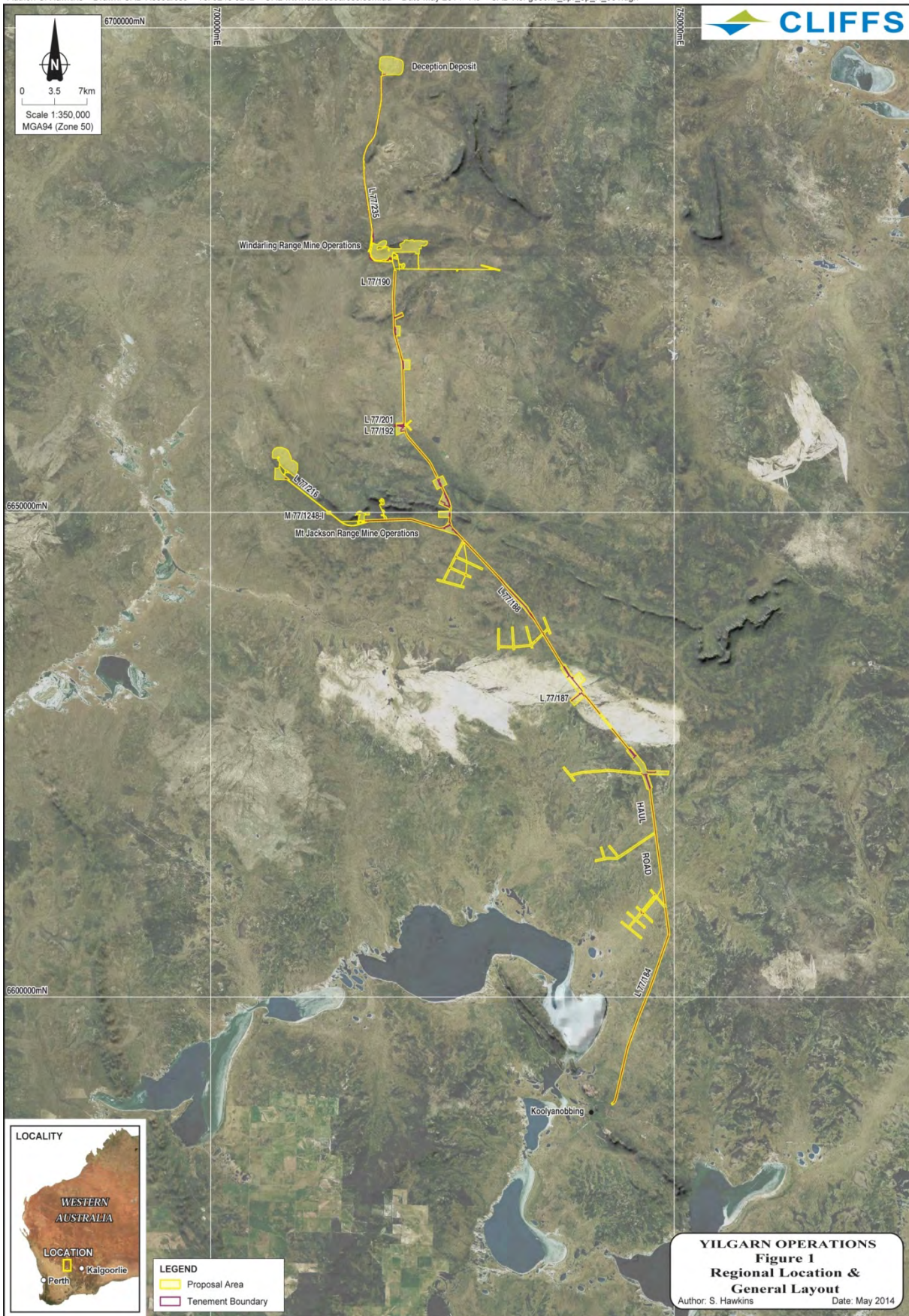
## **Figures**

Figure 1 Yilgarn Operations - Regional Location and General Layout

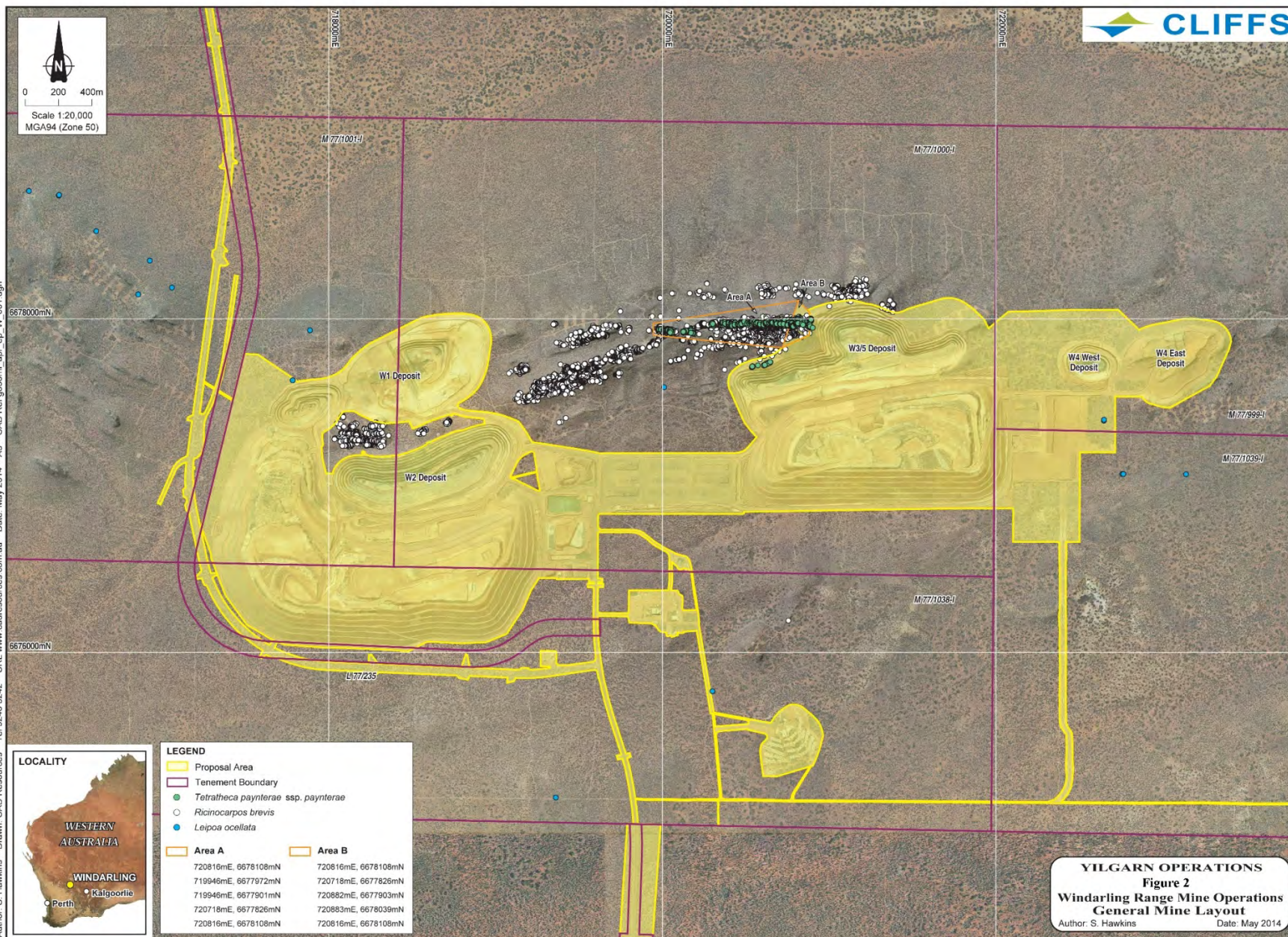
Figure 2 Yilgarn Operations - Windarling Range Mine Operations General Mine Layout

Figure 3 Yilgarn Operations - Mt Jackson Range Mine Operations General Mine Layout

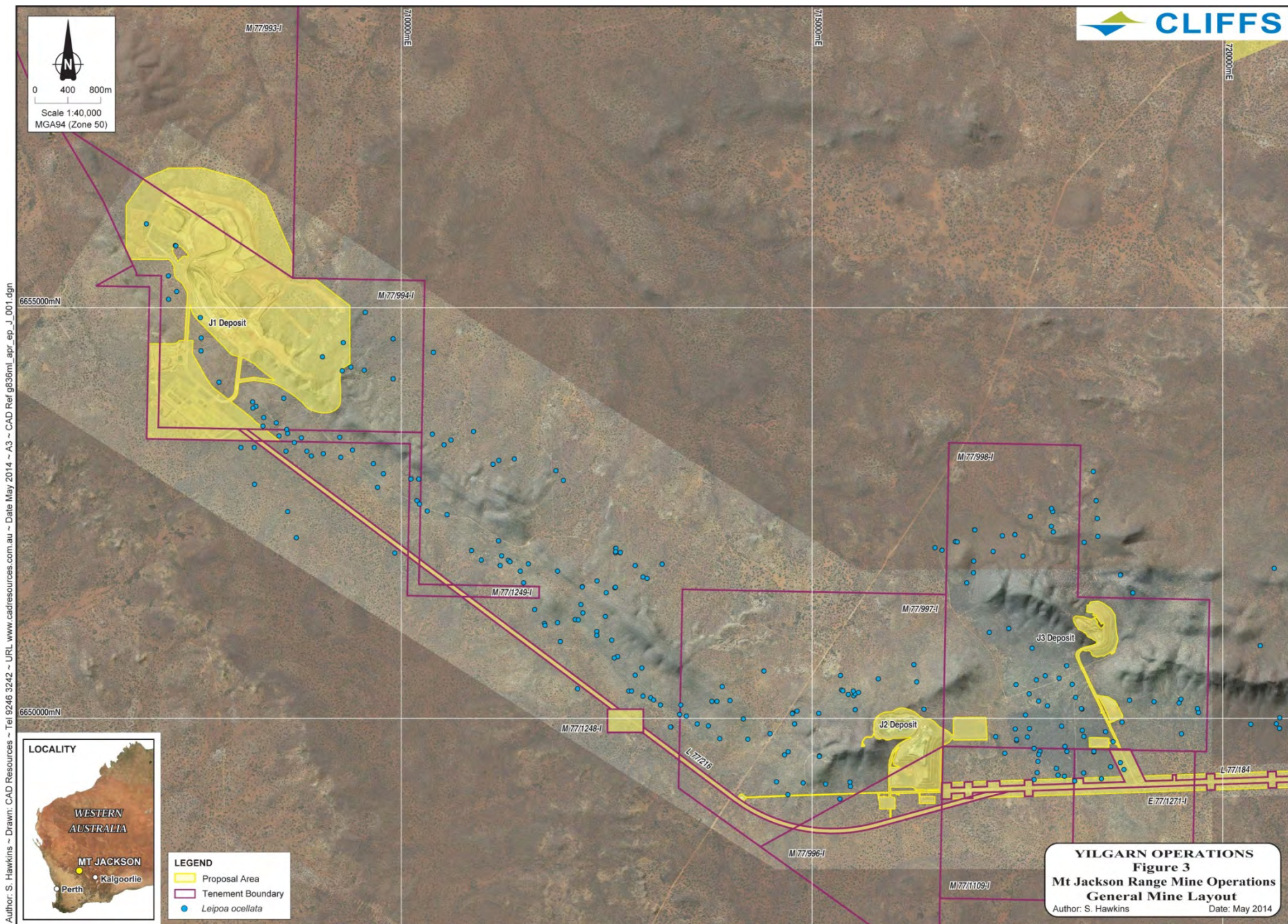
Figure 4 Yilgarn Operations - Deception Deposit Mine Operations General Mine Layout



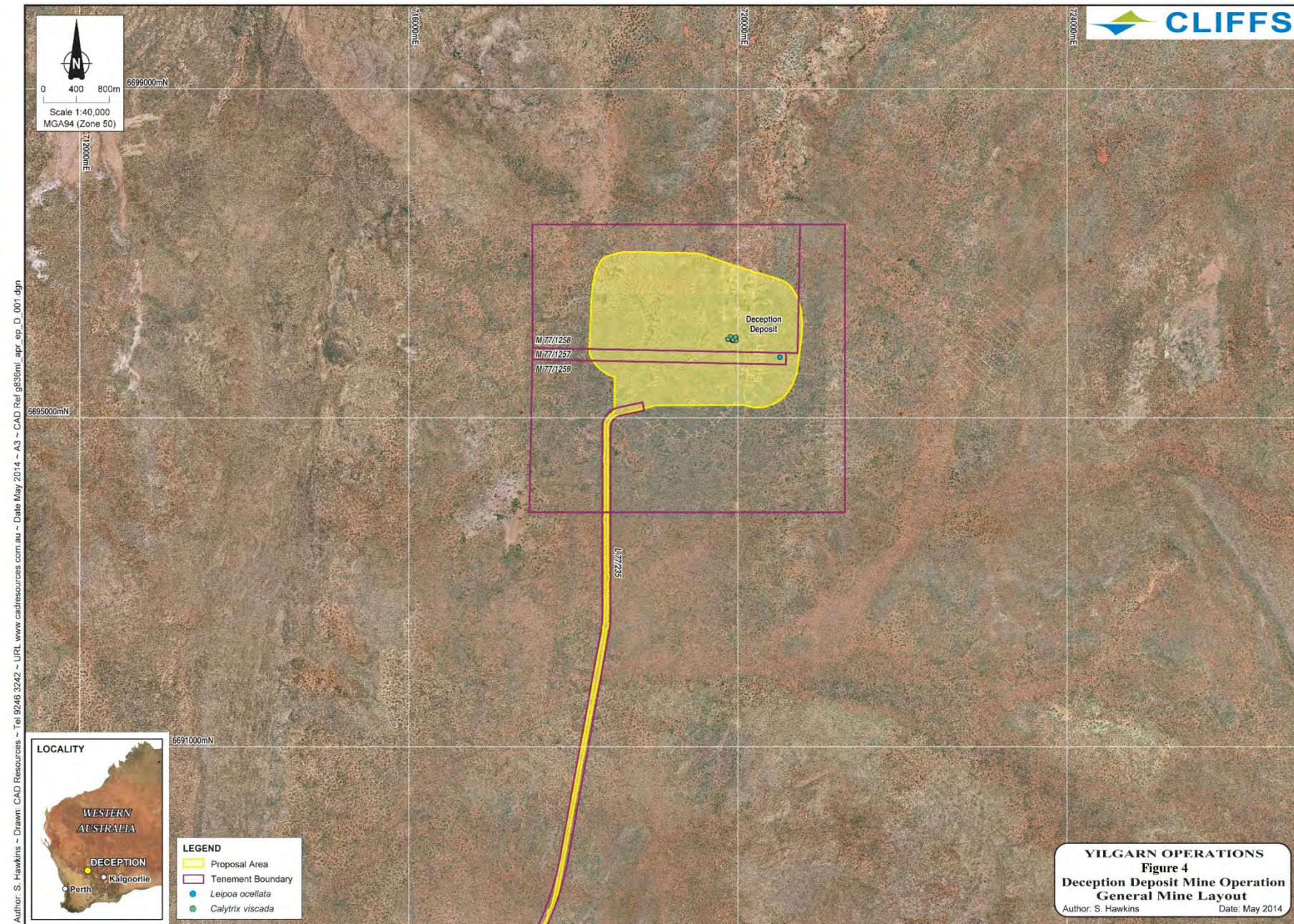














## Schedule 2

Term or Phrase	Definition
Area A	the land area labelled as 'Area A' on Figure 2 of Schedule 1 at the Windarling Range. Area A contains an estimated 50% of the recorded individuals of the Rare Flora taxon <i>Tetratheca paynterae</i> ssp. <i>paynterae</i> .
Area B	the land area labelled as 'Area B' on Figure 2 of Schedule 1 at the Windarling Range. Area B contains an estimated 20% of the recorded individuals of the Rare Flora taxon <i>Tetratheca paynterae</i> ssp. <i>paynterae</i>
AUD	Australian Dollar
CEO	The Chief Executive Officer of the Department of the Public Service of the State responsible for the administration of section 48 of the <i>Environmental Protection Act 1986</i> (WA), or his delegate.
conservation significant fauna	Includes, but not limited to: <i>Leipoa ocellata</i> (malleefowl)
conservation significant flora and vegetation	Includes (but not limited to): <i>Tetratheca paynterae</i> ssp. <i>paynterae</i> (Rare Flora) <i>Ricinocarpus brevis</i> (Rare Flora) <i>Calytrix viscida</i> (Priority 1) <i>Baeckea ochropetala</i> (Priority 1)
DMP	Department of Mines and Petroleum
EPA	Environmental Protection Authority
EP Act	<i>Environmental Protection Act 1986</i>
ground disturbing activity	Excludes activities for the collection of seeds and plant material, and environmental monitoring
Mine, or mining	Has the same meaning as in the <i>Mining Act 1978</i> (WA).
Parks and Wildlife	Department of Parks and Wildlife

### **Schedule 3**

## **YILGARN OPERATIONS – WINDARLING RANGE, MT JACKSON RANGE AND DECEPTION DEPOSIT – SHIRES OF YILGARN AND MENZIES**

### **Coordinates that define the Proposal Development Envelope**

Coordinates defining the mine, supporting infrastructure and haul road Development Envelope as shown in Figures 1 to 4 of the Ministerial Statement are held by the Office of the EPA, dated 4 June 2014.



## Notes

The following notes are provided for information and do not form a part of the implementation conditions of the Statement:

- The proponent for the time being nominated by the Minister for Environment under section 38(6) of the *Environmental Protection Act 1986* is responsible for the implementation of the proposal unless and until that nomination has been revoked and another person is nominated.
- If the person nominated by the Minister, ceases to have responsibility for the proposal, that person is required to provide written notice to the Environmental Protection Authority of its intention to relinquish responsibility for the proposal and the name of the person to whom responsibility for the proposal will pass or has passed. The Minister for Environment may revoke a nomination made under section 38(6) of the *Environmental Protection Act 1986* and nominate another person.
- To initiate a change of proponent, the nominated proponent and proposed proponent are required to complete and submit *Post Assessment Form 1 – Application to Change Nominated Proponent*.
- The General Manager of the Office of the Environmental Protection Authority was the Chief Executive Officer of the Department of the Public Service of the State responsible for the administration of section 48 of the *Environmental Protection Act 1986* at the time the Statement was signed by the Minister for Environment.

## Attachment 1 to Ministerial Statement 982

### Change to proposal under s45C of the *Environmental Protection Act 1986*

---

This Attachment replaces Schedule 1 of Ministerial Statement 982

---

**Proposal:** Yilgarn Operations – Windarling Range, Mt Jackson Range and Deception Deposit – Shire of Yilgarn and Shire of Menzies.

**Proponent:** Cliffs Asia Pacific Iron Ore Pty Ltd.

---

**Changes:**

- W1 West pit approval for mining below groundwater table.
- Inclusion of 6 hectare Haulage Road Train Parking Area at Windarling.
- Inclusion of Table 3 - Coordinates defining Haulage Road Train Parking Area at Windarling.

**Table 1: Summary of the Proposal**

<b>Proposal Title</b>	Yilgarn Operations – Windarling Range, Mt Jackson Range and Deception Deposit – Shire of Yilgarn and Shire of Menzies.
<b>Short Description</b>	The proposal is to develop and operate above and below groundwater table open cut iron ore mine pits, waste rock landforms, ore stockpiles, haul roads and support infrastructure at the W1, W2, W3/5, W4 West and W4 East pits at the Windarling Range, and the J1, J2 and J3 pits at the Mt Jackson Range; and the Deception Deposit; located in the Shire of Yilgarn and the Shire of Menzies.

**Table 2: Location and authorised extent of physical and operational elements**

<b>Column 1</b>	<b>Column 2</b>	<b>Column 3</b>	<b>Column 4</b>
<b>Element</b>	<b>Location</b>	<b>Authorised Extent</b>	<b>Previously Authorised Extent</b>
Iron ore mine pits	Windarling Range – as defined in Figure 2 and by the spatial coordinates in <del>Table 1 of</del> Schedule 3.	Not more than 233 ha. <ul style="list-style-type: none"><li>• W1 East, <b>W1 West</b>, W2 and W3/5 to be mined below groundwater table.</li><li>• W2 to be backfilled above groundwater table.</li><li>• W4 West and W4 East to be mined above the groundwater table.</li></ul>	Not more than 233 ha. <ul style="list-style-type: none"><li>• W1 East, W2 and W3/5 to be mined below groundwater table.</li><li>• W2 to be backfilled above groundwater table.</li><li>• W1 West, W4 West and W4 East to be mined above the groundwater table.</li></ul>
	Mt Jackson Range – as defined in Figure 3 and by the spatial coordinates in <del>Table 2 of</del> Schedule 3.	Not more than 133 ha. <ul style="list-style-type: none"><li>• J1 East, J2 and J3 to be mined above groundwater table.</li><li>• J1 West to be mined below groundwater table.</li></ul>	Not more than 133 ha. <ul style="list-style-type: none"><li>• J1 East, J2 and J3 to be mined above groundwater table.</li><li>• J1 West to be mined below groundwater table.</li></ul>

Column 1	Column 2	Column 3	Column 4
Element	Location	Authorised Extent	Previously Authorised Extent
	Deception Deposit – as defined in Figure 4 and by the spatial coordinates in <del>Table 3</del> of Schedule 3.	Not more than 118 ha. • Deception Deposit to be mined below groundwater table.	Not more than 118 ha. • Deception Deposit to be mined below groundwater table.
Waste Rock Landforms	Windarling Range – See Figure 2. Mt Jackson Range – See Figure 3. Deception Deposit – See Figure 4.	Not more than 410 ha.  Not more than 263 ha.  Not more than 258 ha.	Not more than 410 ha.  Not more than 263 ha.  Not more than 258 ha.
Associated infrastructure (internal mine roads, ore stockpiles, rehabilitation material stockpiles, airstrip and other mine support facilities)	Windarling Range – See Figure 2.  Mt Jackson Range – See Figure 3.  Deception Deposit – See Figure 4.	Not more than <b>210 ha</b> , including 25.1 hectares for Windarling Range Airstrip <b>and 6 ha for Road Train Haulage Parking Area.</b>  Not more than 259 ha.  Not more than 53 ha.	Not more than 204 ha, including 25.1 hectares for Windarling Range Airstrip.  Not more than 259 ha.  Not more than 53 ha.
Haul Roads	Figures 1 to 4.	Not more than 609 ha.	Not more than 609 ha.

Note: Text in **bold** in and strikethrough in Table 2 indicates the changes to the proposal.

**Figures - all previous Figures in Schedule 1 are replaced by the following:**

- Figure 1 Yilgarn Operations - Regional Location and General Layout
- Figure 2 Yilgarn Operations - Windarling Range Mine Operations General Mine Layout
- Figure 3 Yilgarn Operations - Mt Jackson Range Mine Operations General Mine Layout
- Figure 4 Yilgarn Operations - Deception Deposit Mine Operations General Mine Layout

**Inclusion of Table 3 (appended)**

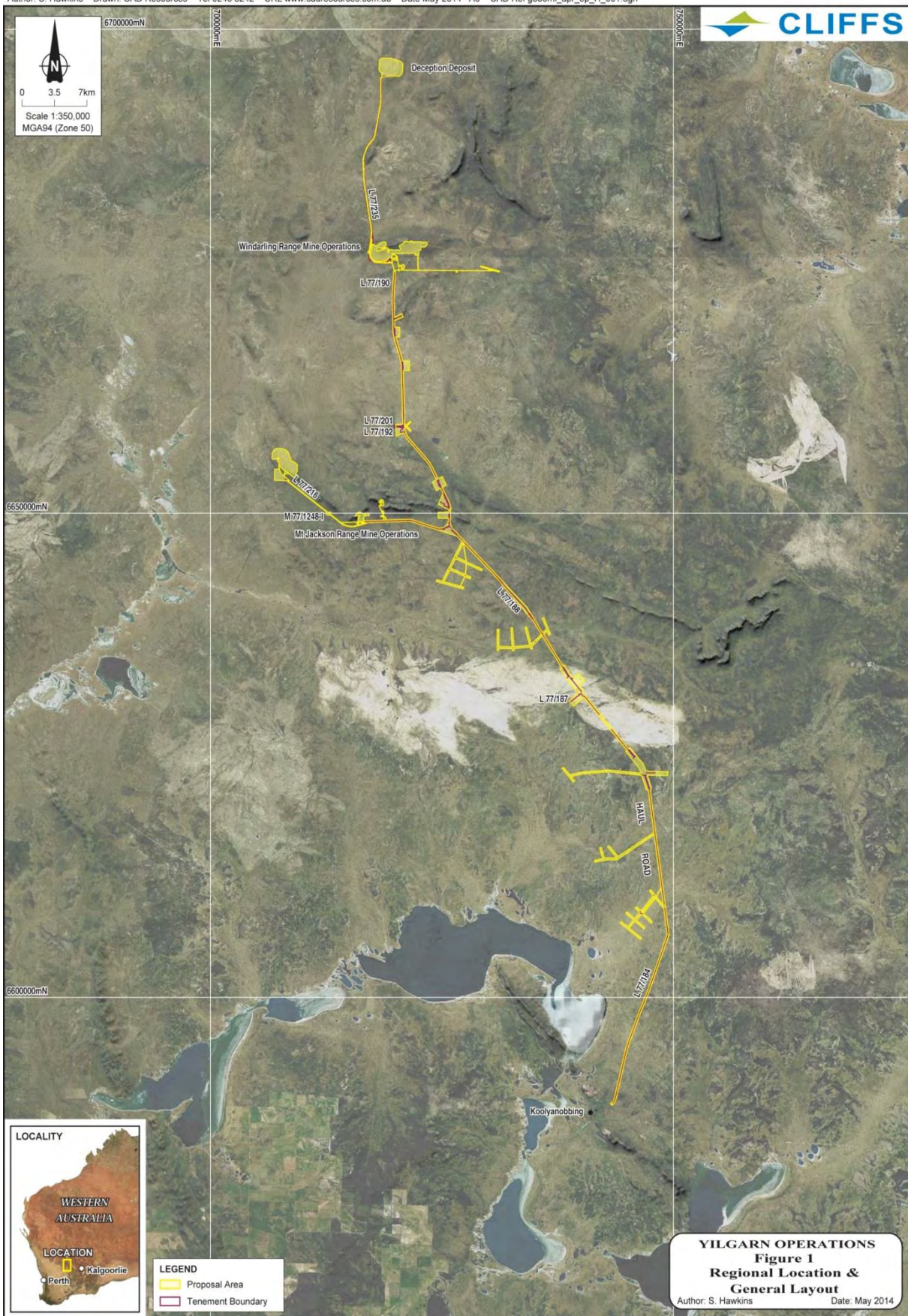
Coordinates defining Haulage Road Train Parking Area at Windarling - Map Grid of Australia (MGA) Zone 50 coordinates

[Signed 17 February 2015]

---

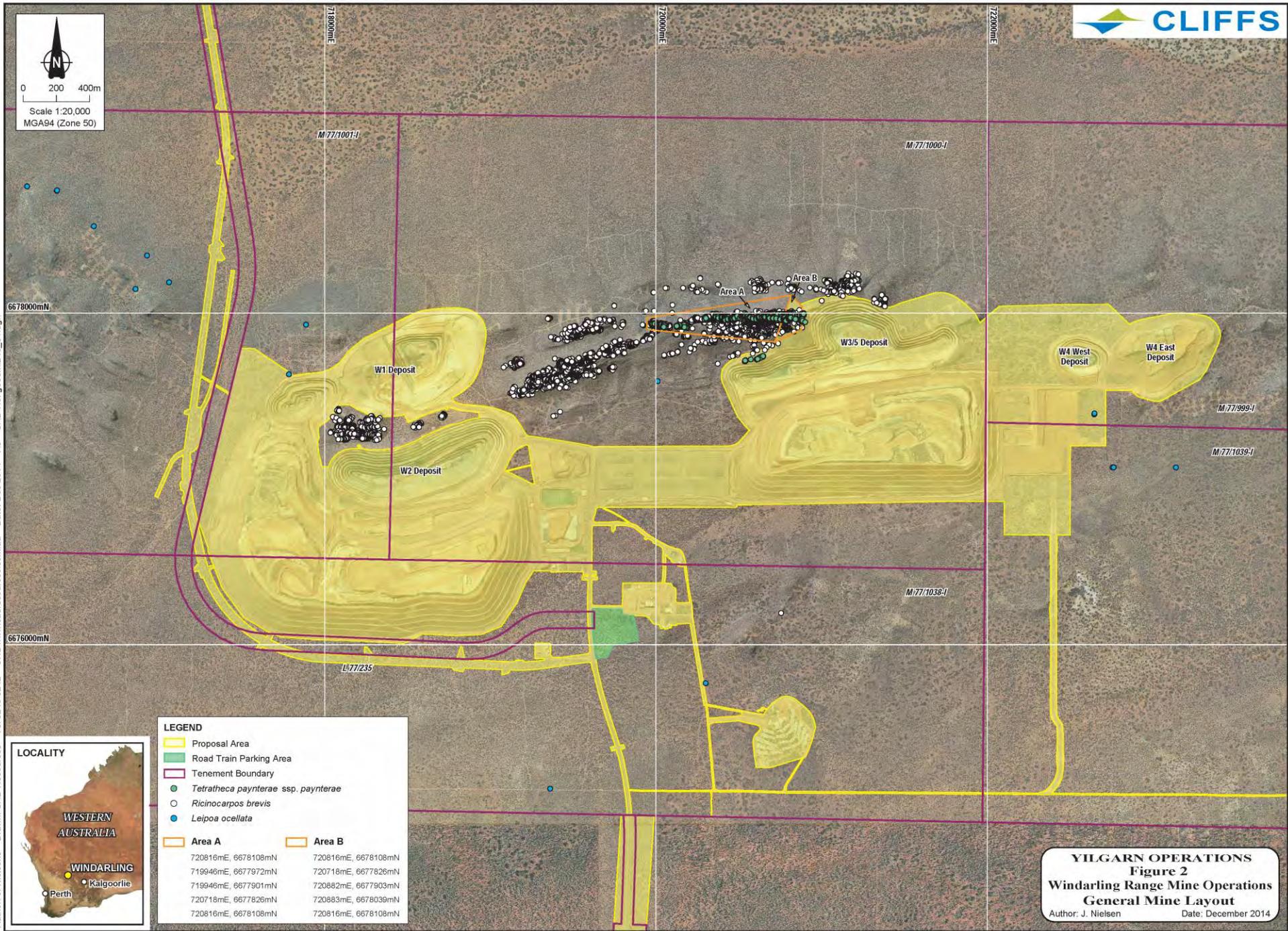
**Dr Paul Vogel**  
CHAIRMAN  
Environmental Protection Authority  
under delegated authority

Approval date: \_\_\_\_\_

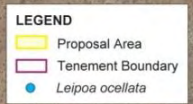
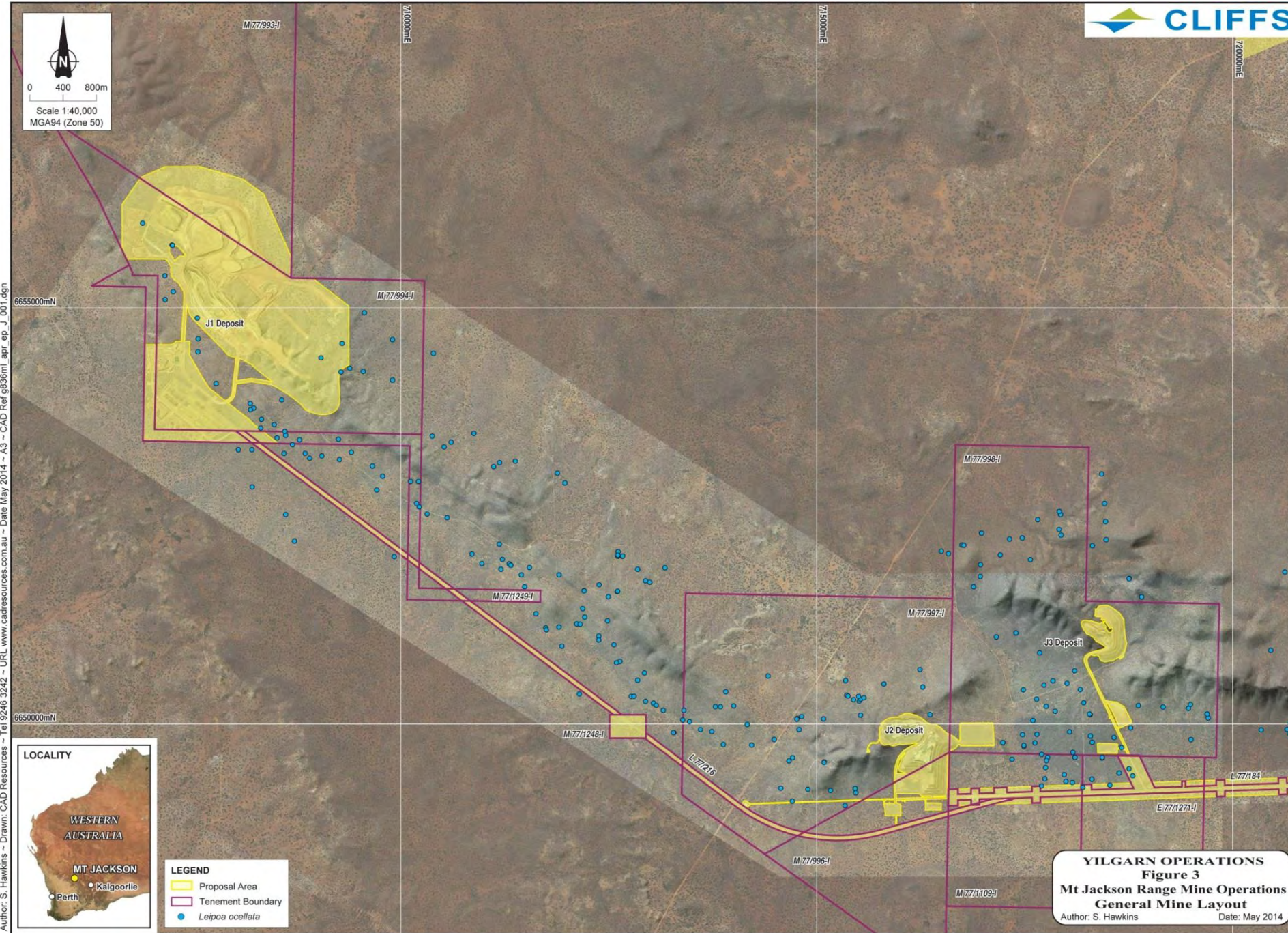
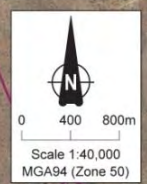




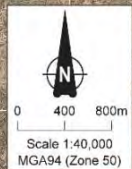
Author: J. Nielsen ~ Drawn: CAD Resources ~ Tel 9246 3242 ~ URL: www.cadresources.com.au ~ Date: Dec 2014 ~ A3 ~ CAD Ref: g836m243\_01.dgn







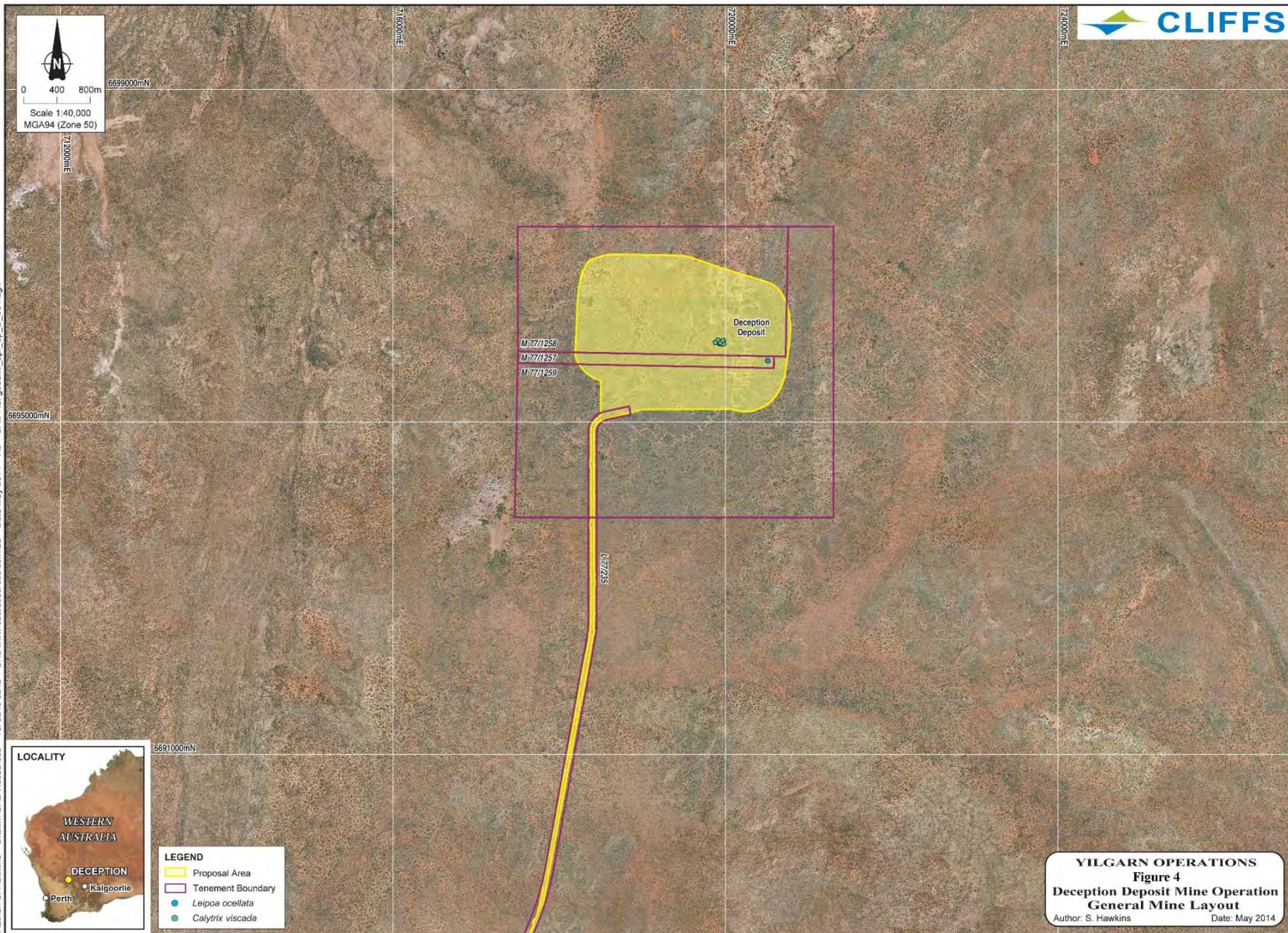




Author: S. Hawkins - Drawn: CAD Resources - Tel 9246 3242 - URL www.cadresources.com.au - Date May 2014 - A3 - CAD Ref g335ml\_apr\_ep\_D\_001.dgn



- LEGEND**
- Proposal Area
  - Tenement Boundary
  - Leipoa ocellata*
  - Calytrix viscida*





**Table 3 – Coordinates defining Haulage Road Train Parking Area at Windarling, Map Grid of Australia (MGA) Zone 50 coordinates**

<b>Coordinate Number</b>	<b>Easting</b>	<b>Northing</b>	<b>Coordinate Number</b>	<b>Easting</b>	<b>Northing</b>
1	719635	6675930	13	719759	6676216
2	719632	6675949	14	719790	6676216
3	719620	6676042	15	719793	6676211
4	719614	6676123	16	719797	6676205
5	719612	6676204	17	719799	6676186
6	719613	6676213	18	719803	6676178
7	719614	6676215	19	719866	6676176
8	719622	6676218	20	719895	6676025
9	719691	6676217	21	719741	6675995
10	719694	6676217	22	719710	6675932
11	719729	6676217	23	719699	6675923
12	719744	6676217	24	719638	6675915



## Attachment 2 to Ministerial Statement 982

### Change to proposal under s45C of the *Environmental Protection Act 1986*

---

This Attachment replaces Schedule 1 and Attachment 1 of Ministerial Statement 982

---

**Proposal:** Yilgarn Operations – Windarling Range, Mt Jackson Range and Deception Deposit – Shire of Yilgarn and Shire of Menzies.

**Proponent:** Cliffs Asia Pacific Iron Ore Pty Ltd.

---

**Changes:**

- Inclusion of the Windarling W7 Pit deposit
- Inclusion of Table 4 - Coordinates defining Windarling W7 Pit and Supporting Infrastructure.

**Table 1: Summary of the Proposal**

<b>Proposal Title</b>	Yilgarn Operations – Windarling Range, Mt Jackson Range and Deception Deposit – Shire of Yilgarn and Shire of Menzies.
<b>Short Description</b>	The proposal is to develop and operate above and below groundwater table open cut iron ore mine pits, waste rock landforms, ore stockpiles, haul roads and support infrastructure at the W1, W2, W3/5, W4 West, W4 East and <b>W7 Pits</b> at the Windarling Range; the J1, J2 and J3 Pits at the Mt Jackson Range, and the Deception Deposit; located in the Shire of Yilgarn and the Shire of Menzies.

**Table 2: Location and authorised extent of physical and operational elements**

<b>Column 1 Element</b>	<b>Column 2 Location</b>	<b>Column 3 Authorised Extent</b>	<b>Column 4 Previously Authorised Extent</b>
Iron ore mine pits	Windarling Range – as defined in Figure 2 and by the spatial coordinates in <b>Table 3, Table 4 and</b> Schedule 3.	Not more than 248 ha. <ul style="list-style-type: none"><li>• W1 East, W1 West, W2 and W3/5 <b>and W7</b> to be mined below groundwater table.</li><li>• W2 to be backfilled above groundwater table.</li><li>• W4 West and W4 East to be mined above the groundwater table.</li></ul>	Not more than 233 ha. <ul style="list-style-type: none"><li>• W1 East, W1 West, W2 and W3/5 to be mined below groundwater table.</li><li>• W2 to be backfilled above groundwater table.</li><li>• W4 West and W4 East to be mined above the groundwater table.</li></ul>
	Mt Jackson Range – as defined in Figure 3 and by the spatial coordinates in Schedule 3.	<ul style="list-style-type: none"><li>• Not more than 133 ha.</li><li>• J1 East, J2 and J3 to be mined above groundwater table.</li><li>• J1 West to be mined below groundwater table.</li></ul>	Not more than 133 ha. <ul style="list-style-type: none"><li>• J1 East, J2 and J3 to be mined above groundwater table.</li><li>• J1 West to be mined below groundwater table.</li></ul>

Column 1 Element	Column 2 Location	Column 3 Authorised Extent	Column 4 Previously Authorised Extent
	Deception Deposit – as defined in Figure 4 and by the spatial coordinates in Schedule 3.	Not more than 118 ha. • Deception Deposit to be mined below groundwater table.	Not more than 118 ha. • Deception Deposit to be mined below groundwater table.
Waste Rock Landforms	Windarling Range – See Figure 2. Mt Jackson Range – See Figure 3. Deception Deposit – See Figure 4.	Not more than <b>433 ha</b> .  Not more than 263 ha.  Not more than 258 ha.	Not more than 410 ha.  Not more than 263 ha.  Not more than 258 ha.
Associated infrastructure (internal mine roads, ore stockpiles, rehabilitation material stockpiles, airstrip and other mine support facilities)	Windarling Range – See Figure 2.  Mt Jackson Range – See Figure 3.  Deception Deposit – See Figure 4.	Not more than <b>229 ha</b> , including 25.1 hectares for Windarling Range Airstrip and 6 ha for Road Train Haulage Parking Area.  Not more than 259 ha.  Not more than 53 ha.	Not more than 210 ha, including 25.1 hectares for Windarling Range Airstrip and 6 ha for Road Train Haulage Parking Area.  Not more than 259 ha.  Not more than 53 ha.
Haul Roads	Figures 1 to 4.	Not more than 609 ha.	Not more than 609 ha.

Note: Text in **bold** in Table 2 indicates the changes to the proposal.

**Figures - all previous Figures in Attachment 1 are replaced by the following:**

- Figure 1 Yilgarn Operations - Regional Location and General Layout
- Figure 2 Yilgarn Operations - Windarling Range Mine Operations General Mine Layout
- Figure 3 Yilgarn Operations - Mt Jackson Range Mine Operations General Mine Layout
- Figure 4 Yilgarn Operations - Deception Deposit Mine Operations General Mine Layout

**Inclusion of Table 4 (appended)**

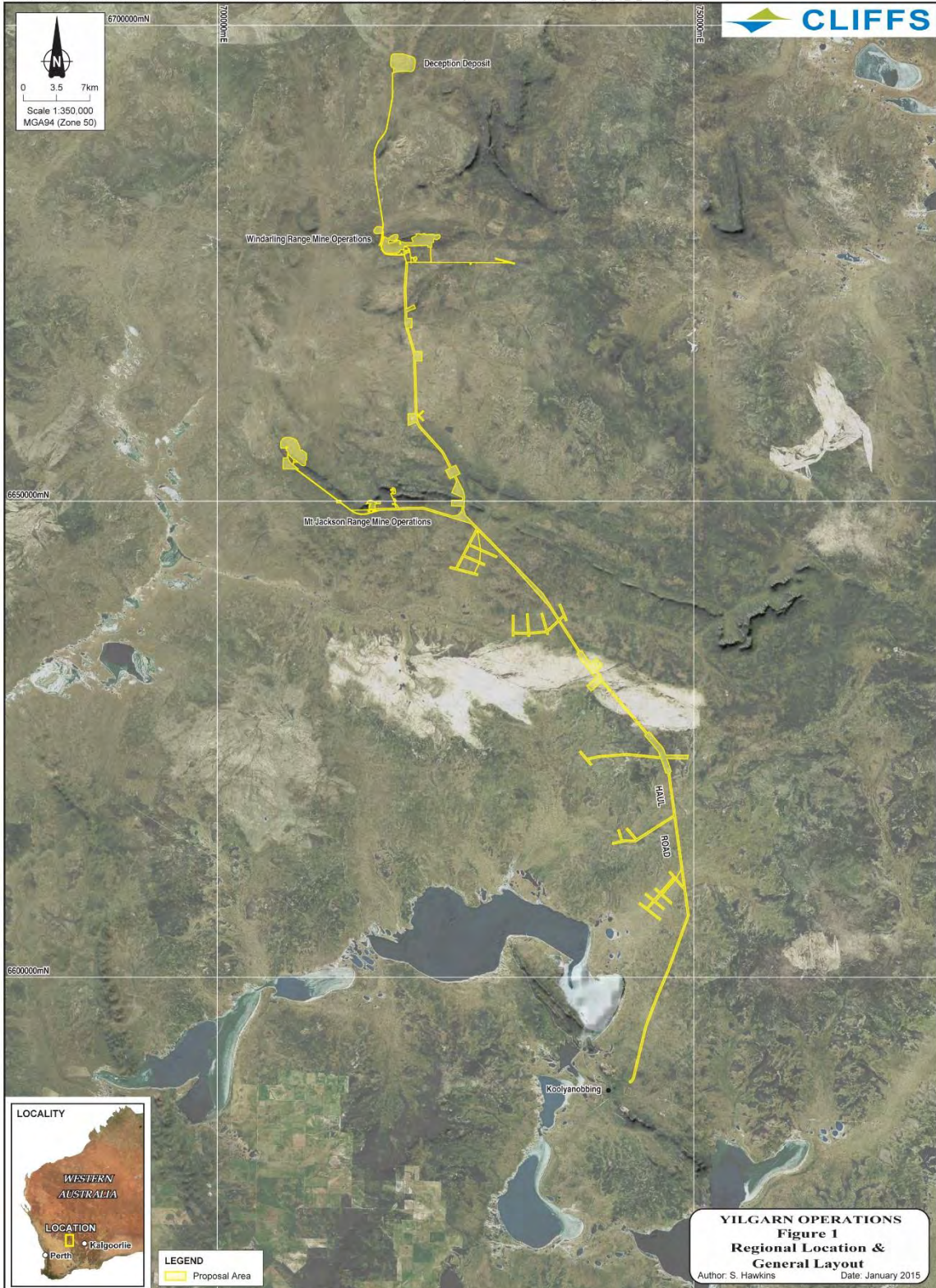
Coordinates defining Windarling W7 Pit and Supporting Infrastructure - Map Grid of Australia (MGA) Zone 50 coordinates

[Signed 27 November 2015]

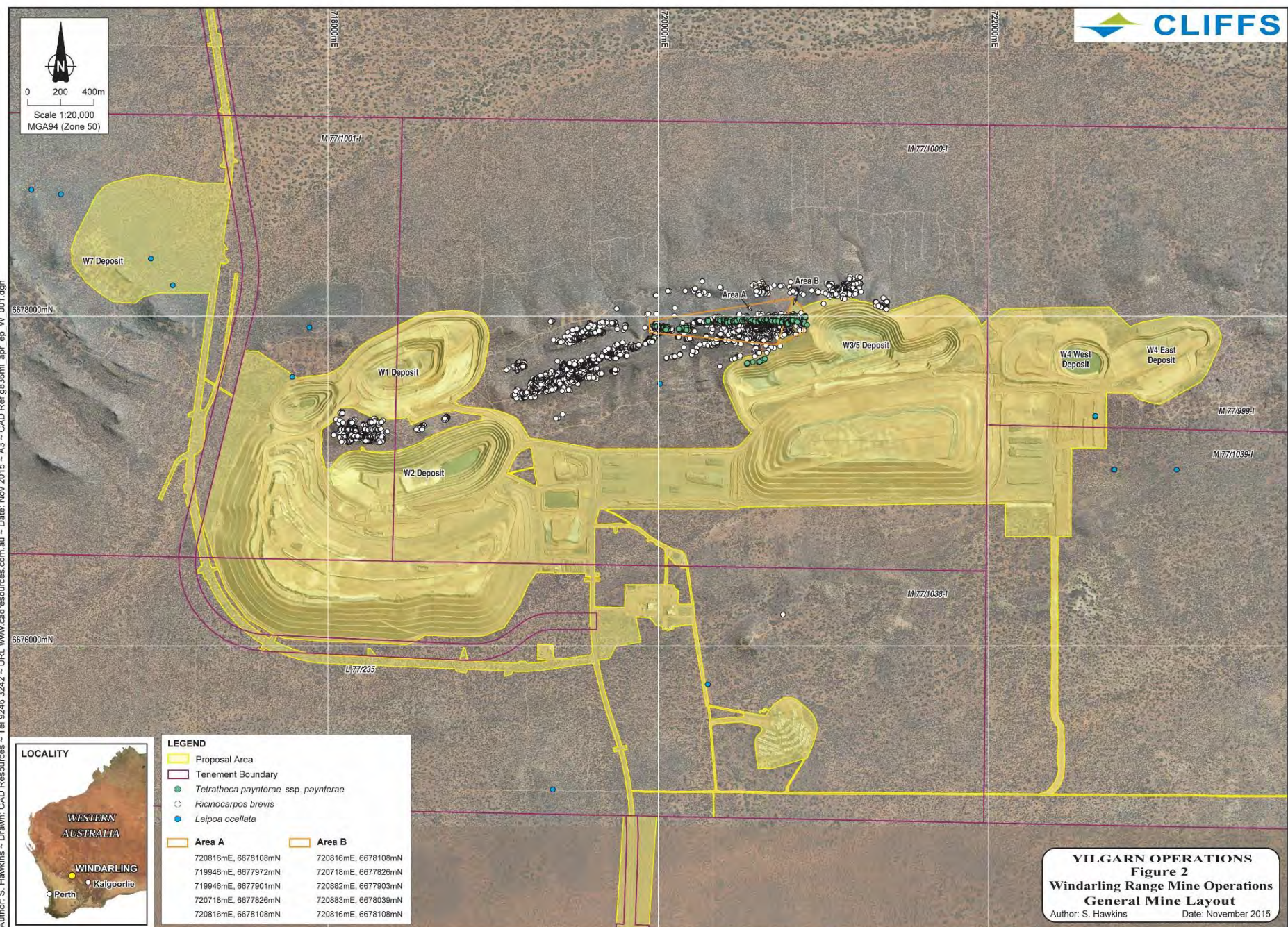
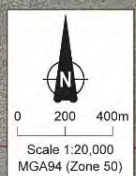
---

**Dr Tom Hatton**  
CHAIRMAN  
Environmental Protection Authority  
under delegated authority

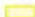




Approval date: \_\_\_\_\_



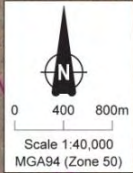




**LEGEND**

 Proposal Area	
 Tenement Boundary	
 <i>Tetratheca paynterae</i> ssp. <i>paynterae</i>	
 <i>Ricinocarpus brevis</i>	
 <i>Leipoa ocellata</i>	
 Area A	 Area B
720816mE, 6678108mN	720816mE, 6678108mN
719946mE, 6677972mN	720718mE, 6677826mN
719946mE, 6677901mN	720882mE, 6677903mN
720718mE, 6677826mN	720883mE, 6678039mN
720816mE, 6678108mN	720816mE, 6678108mN



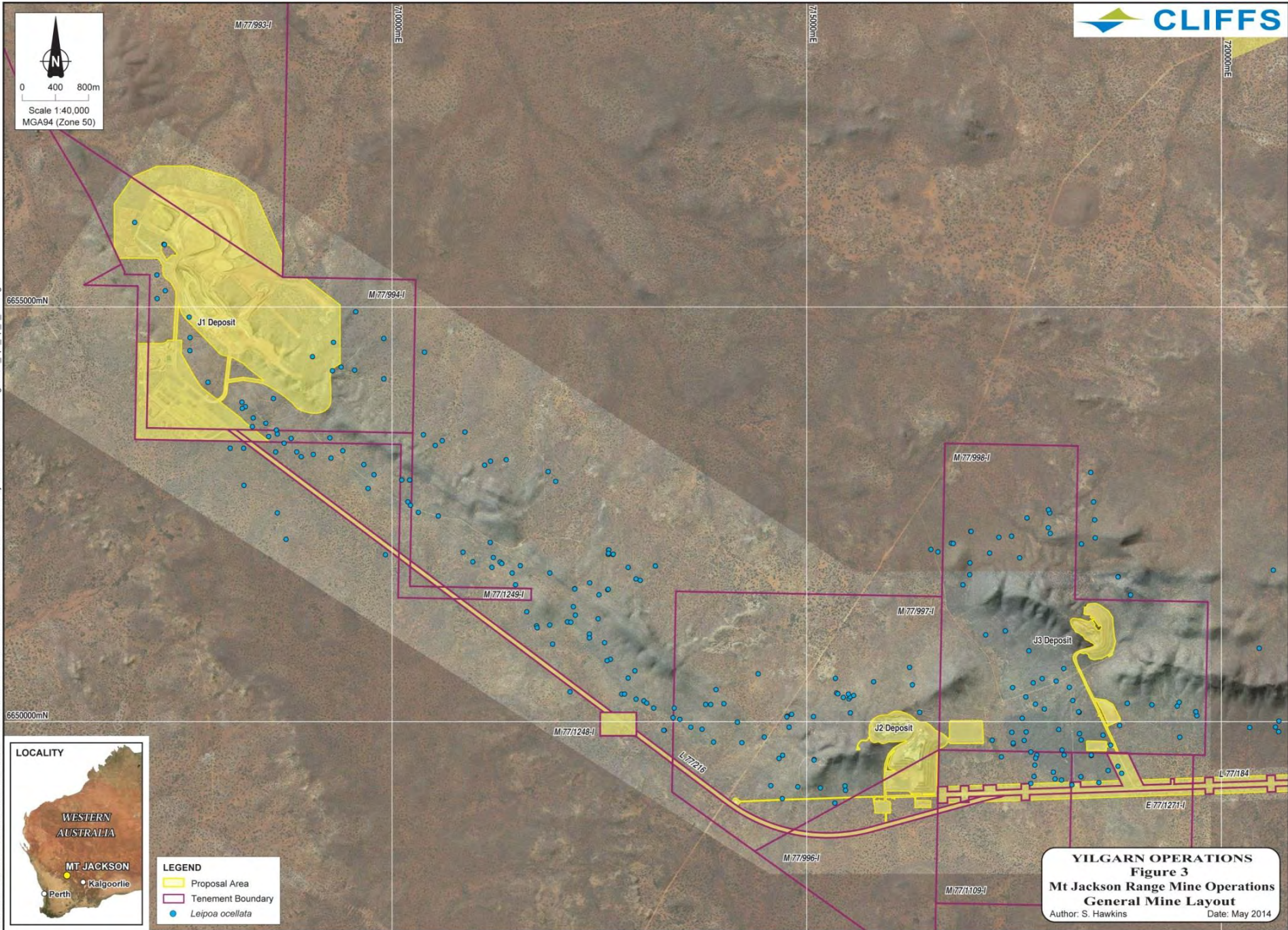


Author: S. Hawkins ~ Drawn: CAD Resources ~ Tel 9246 3242 ~ URL www.cadresources.com.au ~ Date May 2014 ~ A3 ~ CAD Ref g36ml\_apr\_ep\_j\_001.dgn



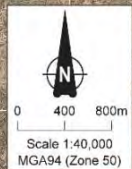
**LEGEND**

- Proposal Area
- Tenement Boundary
- Leipoa ocellata*



**YILGARN OPERATIONS**  
**Figure 3**  
**Mt Jackson Range Mine Operations**  
**General Mine Layout**  
 Author: S. Hawkins Date: May 2014





Author: S. Hawkins - Drawn: CAD Resources - Tel 9246 3242 - URL www.cadresources.com.au - Date May 2014 - A3 - CAD Ref g35m1\_apr\_ep\_D\_001.dgn



- LEGEND**
- Proposal Area
  - Tenement Boundary
  - Leipoa ocellata*
  - Calytrix viscida*





**Table 3 – Coordinates defining Haulage Road Train Parking Area at Windarling, Map Grid of Australia (MGA) Zone 50 coordinates**

Coordinate Number	Easting	Northing	Coordinate Number	Easting	Northing
1	719635	6675930	13	719759	6676216
2	719632	6675949	14	719790	6676216
3	719620	6676042	15	719793	6676211
4	719614	6676123	16	719797	6676205
5	719612	6676204	17	719799	6676186
6	719613	6676213	18	719803	6676178
7	719614	6676215	19	719866	6676176
8	719622	6676218	20	719895	6676025
9	719691	6676217	21	719741	6675995
10	719694	6676217	22	719710	6675932
11	719729	6676217	23	719699	6675923
12	719744	6676217	24	719638	6675915

**Table 4 – Coordinates defining Windarling W7 Pit and Supporting Infrastructure, Map Grid of Australia (MGA) Zone 50 coordinates**

Coordinate Number	Easting	Northing	Coordinate Number	Easting	Northing
1	716882	6678118	20	717374	6678803
2	716831	6678078	21	717372	6678790
3	716697	6678087	22	717355	6678668
4	716625	6678133	23	717324	6678440
5	716534	6678205	24	717321	6678419
6	716451	6678319	25	717314	6678415
7	716444	6678407	26	717304	6678409
8	716474	6678493	27	717302	6678398
9	716501	6678546	28	717299	6678372
10	716598	6678736	29	717302	6678368
11	716642	6678785	30	717312	6678355
12	716694	6678809	31	717311	6678348
13	716734	6678820	32	717288	6678176
14	716831	6678843	33	717284	6678151
15	716900	6678856	34	717283	6678140
16	716927	6678857	35	717211	6678140
17	717078	6678840	36	717132	6678140
18	717189	6678812	37	717048	6678140
19	717214	6678806	38	716967	6678140

## Attachment 3 to Ministerial Statement 982

### Change to proposal under s45C of the *Environmental Protection Act 1986*

This Attachment replaces Schedule 1 and Attachment 2 of Ministerial Statement 982

**Proposal:** Yilgarn Operations – Windarling Range, Mt Jackson Range and Deception Deposit – Shire of Yilgarn and Shire of Menzies.

**Proponent:** Cliffs Asia Pacific Iron Ore Pty Ltd.

**Changes:**

- Inclusion of the Windarling W10 Pit deposit with an additional 24 hectares of disturbance.
- Minor update to Table 4 – Coordinates defining Windarling W7 Pit and Supporting Infrastructure.
- Inclusion of Table 5 - Coordinates defining Windarling W10 Pit and Supporting Infrastructure.

**Table 1: Summary of the Proposal**

<b>Proposal Title</b>	Yilgarn Operations – Windarling Range, Mt Jackson Range and Deception Deposit – Shire of Yilgarn and Shire of Menzies.
<b>Short Description</b>	The proposal is to develop and operate above and below groundwater table open cut iron ore mine pits, waste rock landforms, ore stockpiles, haul roads and support infrastructure at the W1, W2, W3/5, W4 West, W4 East, W7 and <b>W10</b> Pits at the Windarling Range; the J1, J2 and J3 Pits at the Mt Jackson Range, and the Deception Deposit; located in the Shire of Yilgarn and the Shire of Menzies.

**Table 2: Location and authorised extent of physical and operational elements**

<b>Column 1 Element</b>	<b>Column 2 Location</b>	<b>Column 3 Authorised Extent</b>	<b>Column 4 Previously Authorised Extent</b>
Iron ore mine pits	Windarling Range – as defined in Figure 2 and by the spatial coordinates in <b>Table 3, Table 4, Table 5</b> and Schedule 3.	Not more than 266 ha. <ul style="list-style-type: none"><li>• W1 East, W1 West, W2, W3/5, W7 and <b>W10</b> to be mined below groundwater table.</li><li>• W2 to be backfilled above groundwater table.</li><li>• W4 West and W4 East to be mined above the groundwater table.</li></ul>	Not more than 248 ha. <ul style="list-style-type: none"><li>• W1 East, W1 West, W2 and W3/5 and W7 to be mined below groundwater table.</li><li>• W2 to be backfilled above groundwater table.</li><li>• W4 West and W4 East to be mined above the groundwater table.</li></ul>
	Mt Jackson Range – as defined in Figure 3 and by the spatial coordinates in Schedule 3.	Not more than 133 ha. <ul style="list-style-type: none"><li>• J1 East, J2 and J3 to be mined above groundwater table.</li><li>• J1 West to be mined below groundwater table.</li></ul>	Not more than 133 ha. <ul style="list-style-type: none"><li>• J1 East, J2 and J3 to be mined above groundwater table.</li><li>• J1 West to be mined below groundwater table.</li></ul>



Column 1 Element	Column 2 Location	Column 3 Authorised Extent	Column 4 Previously Authorised Extent
	Deception Deposit – as defined in Figure 4 and by the spatial coordinates in Schedule 3.	Not more than 118 ha. • Deception Deposit to be mined below groundwater table.	Not more than 118 ha. • Deception Deposit to be mined below groundwater table.
Waste Rock Landforms	Windarling Range – See Figure 2. Mt Jackson Range – See Figure 3. Deception Deposit – See Figure 4.	Not more than 433 ha.  Not more than 263 ha.  Not more than 258 ha.	Not more than 433 ha.  Not more than 263 ha.  Not more than 258 ha.
Associated infrastructure (internal mine roads, ore stockpiles, rehabilitation material stockpiles, airstrip and other mine support facilities)	Windarling Range – See Figure 2.  Mt Jackson Range – See Figure 3.  Deception Deposit – See Figure 4.	Not more than <b>235 ha</b> , including 25.1 hectares for Windarling Range Airstrip and 6 ha for Road Train Haulage Parking Area.  Not more than 259 ha.  Not more than 53 ha.	Not more than 229 ha, including 25.1 hectares for Windarling Range Airstrip and 6 ha for Road Train Haulage Parking Area.  Not more than 259 ha.  Not more than 53 ha.
Haul Roads	Figures 1 to 4.	Not more than 609 ha.	Not more than 609 ha.

Note: Text in **bold** in Table 2 indicates the changes to the proposal.

**Figures - all previous Figures in Attachment 2 are replaced by the following:**

- Figure 1 Yilgarn Operations - Regional Location and General Layout  
Figure 2 Yilgarn Operations - Windarling Range Mine Operations General Mine Layout  
Figure 3 Yilgarn Operations - Mt Jackson Range Mine Operations General Mine Layout  
Figure 4 Yilgarn Operations - Deception Deposit Mine Operations General Mine Layout

**Tables – all previous Tables in Attachment 2 are replaced by the following:**

- Table 3 Coordinates defining Haulage Road Train Parking Area at Windarling, Map Grid of Australia (MGA) Zone 50 coordinates.  
Table 4 Coordinates defining Windarling W7 Pit and Supporting Infrastructure - Map Grid of Australia (MGA) Zone 50 coordinates.  
Table 5 Coordinates defining Windarling W10 Pit and Supporting Infrastructure - Map Grid of Australia (MGA) Zone 50 coordinates.

[Signed 29 September 2016]

---

**Dr Tom Hatton**  
CHAIRMAN  
Environmental Protection Authority  
under delegated authority  
Approval date: \_\_\_\_\_



**Figure 1: Yilgarn Operations – Regional Location and General Layout**



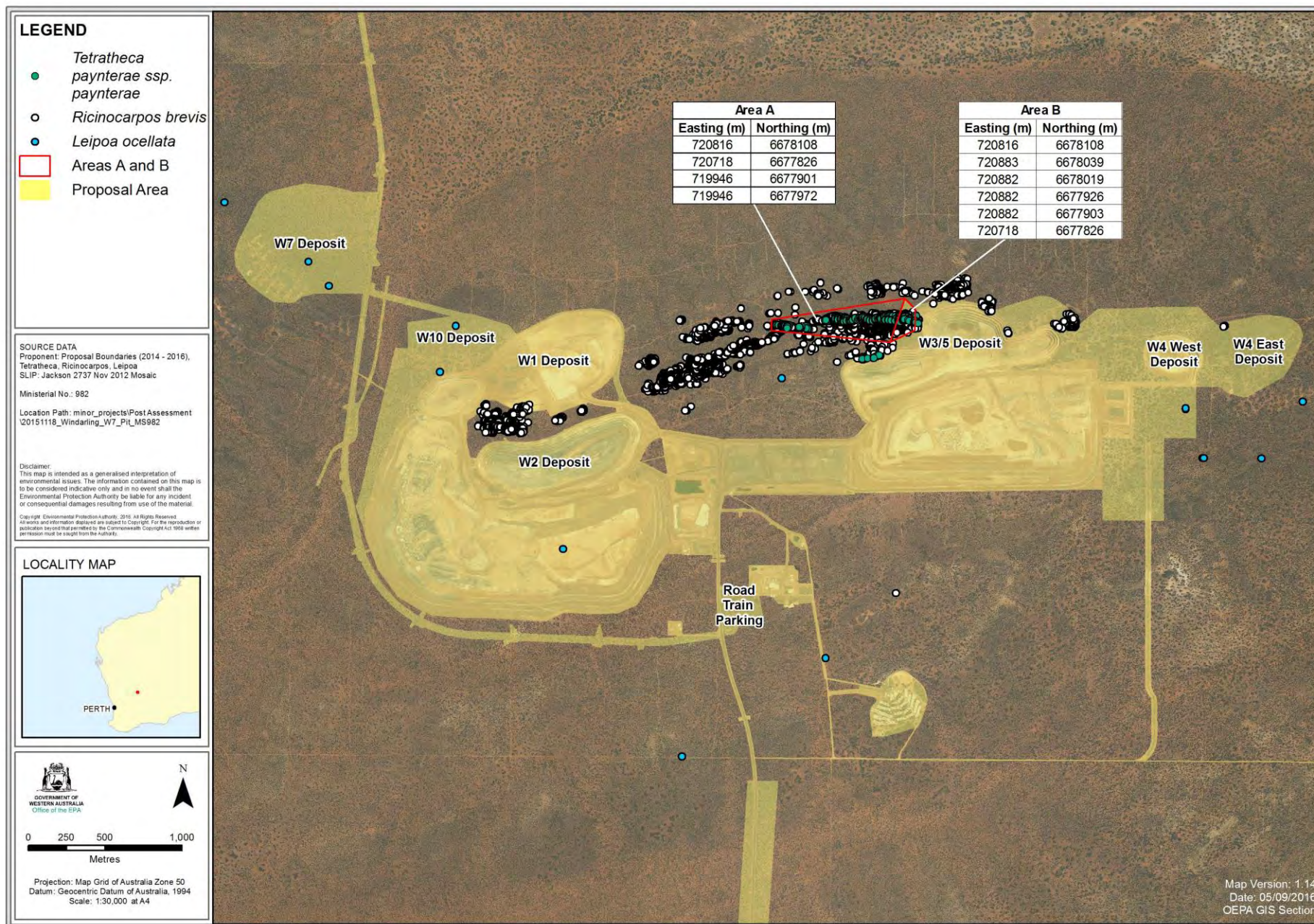


Figure 2: Yilgarn Operations – Windarling Range Mine Operations General Mine Layout



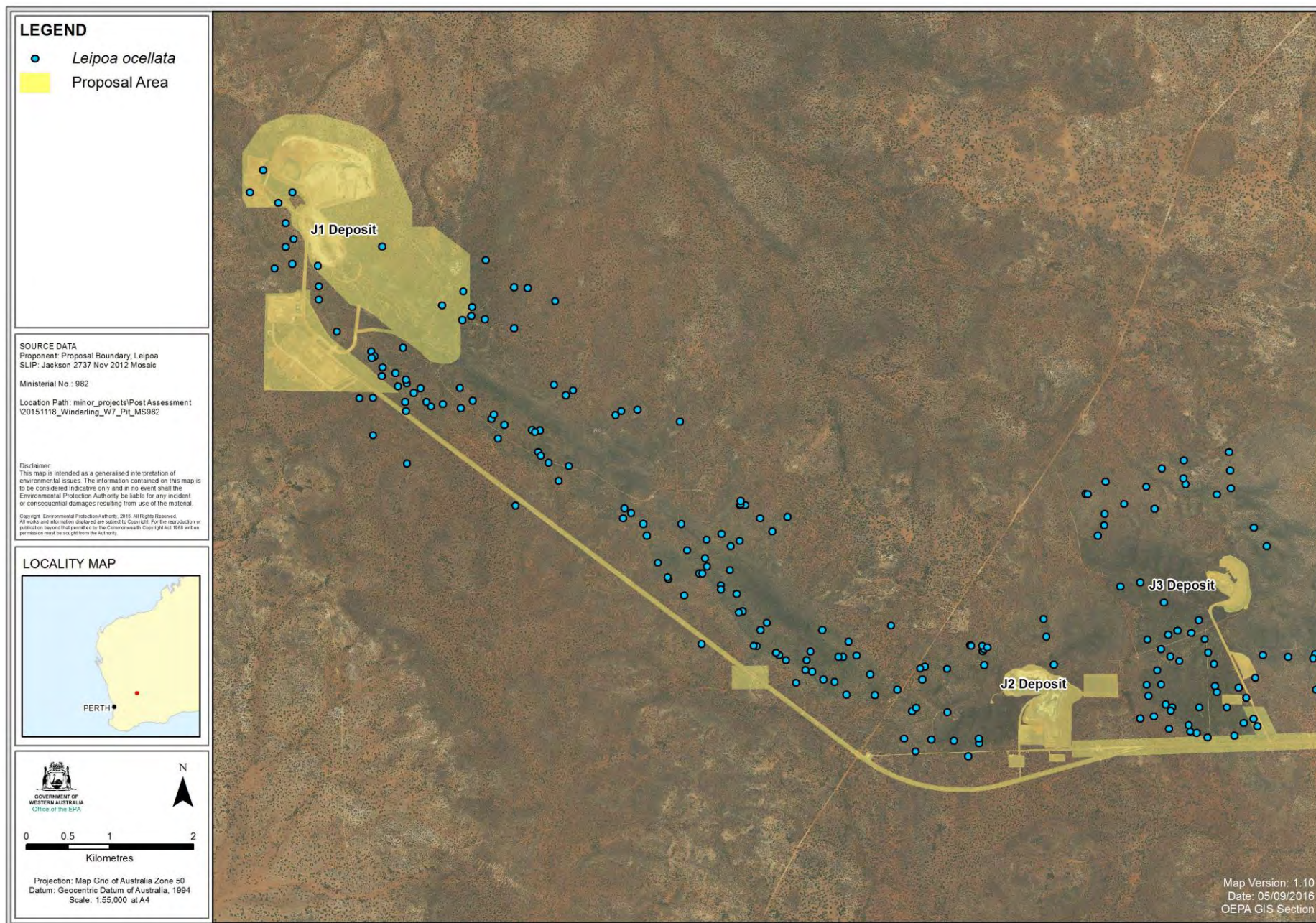
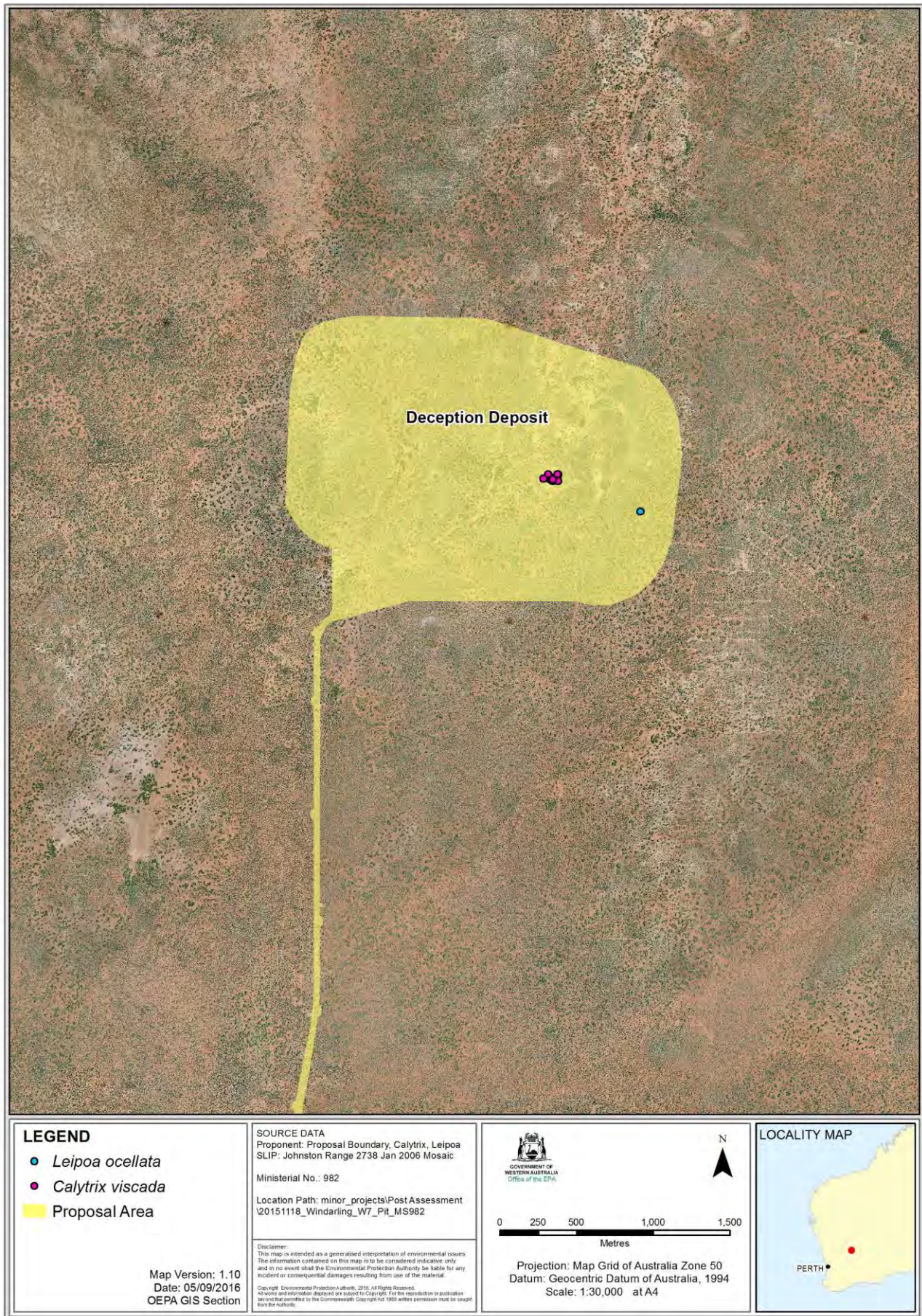


Figure 3: Yilgarn Operations – Mt Jackson Range Mine Operations General Mine Layout





**Figure 4: Yilgarn Operations – Deception Deposit Mine Operations General Mine Layout**



**Table 3 – Coordinates defining Haulage Road Train Parking Area at Windarling, Map Grid of Australia (MGA) Zone 50 coordinates**

Coordinate Number	Easting	Northing	Coordinate Number	Easting	Northing
1	719635	6675930	13	719759	6676216
2	719632	6675949	14	719790	6676216
3	719620	6676042	15	719793	6676211
4	719614	6676123	16	719797	6676205
5	719612	6676204	17	719799	6676186
6	719613	6676213	18	719803	6676178
7	719614	6676215	19	719866	6676176
8	719622	6676218	20	719895	6676025
9	719691	6676217	21	719741	6675995
10	719694	6676217	22	719710	6675932
11	719729	6676217	23	719699	6675923
12	719744	6676217	24	719638	6675915

**Table 4 – Coordinates defining Windarling W7 Pit and Supporting Infrastructure, Map Grid of Australia (MGA) Zone 50 coordinates**

Coordinate Number	Easting	Northing	Coordinate Number	Easting	Northing
1	716882	6678118	16	716927	6678857
2	716831	6678078	17	717078	6678840
3	716697	6678087	18	717189	6678812
4	716625	6678133	19	717214	6678806
5	716534	6678205	20	717374	6678803
6	716451	6678319	21	717373	6678800
7	716444	6678407	22	717321	6678419
8	716474	6678493	23	717304	6678409
9	716501	6678546	24	717299	6678372
10	716598	6678736	25	717312	6678355
11	716642	6678785	26	717283	6678140
12	716694	6678809	27	717211	6678140
13	716734	6678820	28	717132	6678140
14	716831	6678843	29	717048	6678140
15	716900	6678856	30	716967	6678140

**Table 5 – Coordinates defining Windarling W10 Pit and Supporting Infrastructure, Map Grid of Australia (MGA) Zone 50 coordinates**

Coordinate Number	Easting	Northing	Coordinate Number	Easting	Northing
1	719033	6677424	22	718927	6677532
2	719033	6677424	23	718926	6677534
3	719004	6677431	24	718923	6677544
4	718994	6677433	25	718922	6677546
5	718979	6677436	26	718920	6677552
6	718963	6677438	27	718919	6677555
7	718948	6677440	28	718917	6677559
8	718950	6677471	29	718916	6677562
9	718949	6677474	30	718914	6677568
10	718945	6677484	31	718914	6677574
11	718944	6677486	32	718913	6677575
12	718944	6677487	33	718913	6677576
13	718943	6677490	34	718913	6677578
14	718942	6677493	35	718913	6677579
15	718940	6677496	36	718913	6677579
16	718939	6677498	37	718913	6677588
17	718936	6677507	38	718913	6677589
18	718936	6677508	39	718913	6677590
19	718932	6677519	40	718912	6677597
20	718931	6677521	41	718912	6677600

Coordinate Number	Easting	Northing	Coordinate Number	Easting	Northing
21	718927	6677531	42	718912	6677608
43	718912	6677610	105	717576	6677798
44	718913	6677612	106	717576	6677803
45	718919	6677626	107	717576	6677803
46	718936	6677665	108	717576	6677804
47	718945	6677689	109	717576	6677810
48	718949	6677705	110	717576	6677811
49	718953	6677728	111	717576	6677818
50	718958	6677759	112	717576	6677819
51	718964	6677803	113	717576	6677819
52	718971	6677839	114	717576	6677819
53	718974	6677864	115	717576	6677819
54	718975	6677877	116	717576	6677827
55	718974	6677888	117	717576	6677831
56	718974	6677892	118	717576	6677833
57	718970	6677913	119	717576	6677837
58	718967	6677923	120	717576	6677839
59	718965	6677930	121	717575	6677846
60	718958	6677946	122	717575	6677850
61	718947	6677967	123	717575	6677855
62	718928	6677988	124	717575	6677864
63	718906	6678005	125	717575	6677867
64	718889	6678014	126	717575	6677870
65	718876	6678019	127	717575	6677872
66	718863	6678023	128	717575	6677877
67	718850	6678026	129	717575	6677880
68	718824	6678030	130	717575	6677890
69	718799	6678032	131	717575	6677895
70	718748	6678032	132	717574	6677901
71	718704	6678030	133	717574	6677906
72	718646	6678024	134	717574	6677910
73	718618	6678020	135	717574	6677913
74	718588	6678015	136	717574	6677920
75	718574	6678011	137	717574	6677923
76	718558	6678006	138	717574	6677928
77	718539	6677999	139	717574	6677932
78	718254	6677856	140	717574	6677936
79	718241	6677849	141	717574	6677941
80	718227	6677840	142	717574	6677944
81	718208	6677825	143	717573	6677953
82	718181	6677803	144	717573	6677954
83	718172	6677796	145	717580	6677955
84	718143	6677766	146	717585	6677956
85	718135	6677758	147	717590	6677956
86	718130	6677752	148	717599	6677958
87	718118	6677736	149	717600	6677958
88	718098	6677711	150	717603	6677958
89	718082	6677696	151	717603	6677958
90	718045	6677670	152	717605	6677958
91	718023	6677659	153	717611	6677959
92	718001	6677651	154	717615	6677960
93	717978	6677645	155	717620	6677960
94	717953	6677641	156	717630	6677962
95	717887	6677635	157	717635	6677962
96	717867	6677632	158	717642	6677963
97	717836	6677628	159	717645	6677964
98	717824	6677626	160	717652	6677965
99	717811	6677623	161	717660	6677966
100	717768	6677655	162	717662	6677966
101	717577	6677784	163	717662	6677966
102	717577	6677788	164	717675	6677968

Coordinate Number	Easting	Northing	Coordinate Number	Easting	Northing
103	717577	6677791	165	717677	6677968
104	717577	6677794	166	717690	6677970
167	717693	6677970	229	717615	6678055
168	717704	6677972	230	717609	6678057
169	717705	6677972	231	717600	6678059
170	717705	6677972	232	717599	6678059
171	717705	6677972	233	717599	6678059
172	717720	6677974	234	717597	6678060
173	717729	6677975	235	717596	6678060
174	717734	6677976	236	717594	6678060
175	717744	6677977	237	717593	6678061
176	717751	6677978	238	717593	6678061
177	717760	6677979	239	717588	6678062
178	717765	6677980	240	717586	6678062
179	717769	6677981	241	717585	6678063
180	717780	6677982	242	717575	6678065
181	717792	6677984	243	717570	6678066
182	717793	6677984	244	717561	6678069
183	717799	6677985	245	717555	6678070
184	717810	6677986	246	717541	6678074
185	717810	6677986	247	717540	6678074
186	717824	6677988	248	717536	6678075
187	717825	6677988	249	717527	6678077
188	717835	6677990	250	717525	6678078
189	717841	6677991	251	717521	6678079
190	717847	6677991	252	717510	6678082
191	717857	6677993	253	717503	6678083
192	717859	6677993	254	717495	6678085
193	717857	6677994	255	717481	6678089
194	717851	6677995	256	717480	6678089
195	717843	6677997	257	717477	6678090
196	717830	6678000	258	717467	6678092
197	717825	6678002	259	717465	6678093
198	717822	6678002	260	717461	6678094
199	717817	6678004	261	717449	6678097
200	717816	6678004	262	717435	6678101
201	717810	6678005	263	717433	6678101
202	717804	6678007	264	717439	6678145
203	717795	6678009	265	717444	6678143
204	717782	6678013	266	717450	6678142
205	717780	6678013	267	717460	6678139
206	717777	6678014	268	717465	6678138
207	717765	6678017	269	717468	6678137
208	717756	6678019	270	717477	6678135
209	717750	6678021	271	717480	6678134
210	717743	6678023	272	717491	6678131
211	717736	6678024	273	717495	6678130
212	717724	6678027	274	717502	6678128
213	717720	6678028	275	717510	6678126
214	717717	6678029	276	717515	6678125
215	717710	6678031	277	717525	6678122
216	717705	6678032	278	717527	6678122
217	717695	6678035	279	717533	6678120
218	717690	6678036	280	717540	6678118
219	717682	6678038	281	717543	6678118
220	717675	6678040	282	717555	6678114
221	717671	6678041	283	717561	6678113
222	717660	6678044	284	717570	6678110
223	717654	6678045	285	717583	6678107
224	717647	6678047	286	717586	6678106
225	717645	6678047	287	717586	6678106



Coordinate Number	Easting	Northing	Coordinate Number	Easting	Northing
226	717635	6678050	288	717589	6678105
227	717630	6678051	289	717589	6678105
228	717623	6678053	290	717590	6678105
291	717596	6678103	353	718040	6677995
292	717600	6678102	354	718047	6677993
293	717610	6678100	355	718048	6677993
294	717615	6678099	356	718050	6677992
295	717624	6678096	357	718060	6677990
296	717630	6678095	358	718063	6677989
297	717634	6678094	359	718147	6677963
298	717645	6678091	360	718147	6677963
299	717646	6678091	361	718233	6677936
300	717648	6678090	362	718241	6677927
301	717657	6678087	363	718242	6677926
302	717660	6678087	364	718243	6677924
303	717669	6678084	365	718244	6677923
304	717675	6678083	366	718248	6677919
305	717681	6678081	367	718249	6677918
306	717690	6678079	368	718254	6677912
307	717701	6678076	369	718281	6677879
308	717705	6678075	370	718289	6677883
309	717707	6678075	371	718289	6677883
310	717720	6678071	372	718290	6677883
311	717730	6678068	373	718291	6677884
312	717734	6678067	374	718304	6677890
313	717745	6678065	375	718308	6677891
314	717750	6678063	376	718308	6677891
315	717764	6678060	377	718316	6677895
316	717765	6678059	378	718317	6677896
317	717765	6678059	379	718320	6677897
318	717767	6678059	380	718325	6677900
319	717780	6678055	381	718335	6677905
320	717789	6678053	382	718335	6677905
321	717795	6678051	383	718339	6677907
322	717807	6678048	384	718345	6677910
323	717809	6678048	385	718348	6677912
324	717810	6678047	386	718350	6677912
325	717816	6678046	387	718350	6677912
326	717825	6678044	388	718355	6677915
327	717826	6678043	389	718357	6677916
328	717828	6678043	390	718364	6677920
329	717838	6678040	391	718365	6677921
330	717840	6678040	392	718366	6677921
331	717850	6678037	393	718366	6677922
332	717851	6678037	394	718367	6677922
333	717858	6678035	395	718367	6677922
334	717869	6678032	396	718372	6677925
335	717870	6678032	397	718373	6677925
336	717876	6678030	398	718380	6677929
337	717884	6678028	399	718389	6677933
338	717886	6678028	400	718400	6677938
339	717893	6678026	401	718400	6677938
340	717897	6678025	402	718401	6677939
341	717898	6678024	403	718402	6677939
342	717904	6678023	404	718410	6677943
343	717909	6678021	405	718417	6677947
344	717915	6678020	406	718423	6677950
345	717925	6678017	407	718424	6677950
346	717940	6678015	408	718425	6677951
347	717991	6678009	409	718426	6677951
348	718020	6678001	410	718428	6677952

Coordinate Number	Easting	Northing	Coordinate Number	Easting	Northing
349	718020	6678001	411	718429	6677953
350	718021	6678001	412	718435	6677956
351	718025	6678000	413	718441	6677959
352	718035	6677997	414	718443	6677961
415	718443	6677961	477	718650	6678033
416	718447	6677963	478	718651	6678033
417	718450	6677964	479	718663	6678034
418	718450	6677964	480	718670	6678034
419	718451	6677965	481	718673	6678035
420	718454	6677967	482	718682	6678035
421	718457	6677968	483	718689	6678036
422	718464	6677972	484	718694	6678037
423	718468	6677974	485	718696	6678037
424	718470	6677975	486	718697	6678037
425	718470	6677976	487	718698	6678037
426	718474	6677978	488	718700	6678037
427	718475	6677979	489	718701	6678037
428	718476	6677979	490	718701	6678037
429	718482	6677982	491	718702	6678037
430	718483	6677983	492	718715	6678039
431	718484	6677983	493	718717	6678039
432	718484	6677984	494	718719	6678039
433	718485	6677984	495	718721	6678039
434	718486	6677985	496	718730	6678040
435	718489	6677987	497	718737	6678041
436	718494	6677989	498	718740	6678041
437	718498	6677991	499	718743	6678041
438	718498	6677991	500	718744	6678041
439	718504	6677994	501	718752	6678042
440	718505	6677995	502	718755	6678042
441	718515	6678000	503	718770	6678042
442	718515	6678000	504	718772	6678042
443	718515	6678000	505	718773	6678042
444	718516	6678000	506	718784	6678042
445	718527	6678006	507	718787	6678042
446	718530	6678007	508	718792	6678042
447	718535	6678009	509	718856	6678041
448	718542	6678012	510	718860	6678040
449	718545	6678013	511	718867	6678038
450	718546	6678013	512	718874	6678036
451	718546	6678013	513	718876	6678035
452	718547	6678014	514	718877	6678035
453	718552	6678015	515	718887	6678032
454	718560	6678017	516	718889	6678031
455	718563	6678018	517	718889	6678031
456	718573	6678021	518	718889	6678031
457	718574	6678021	519	718890	6678030
458	718576	6678022	520	718890	6678030
459	718579	6678022	521	718891	6678030
460	718587	6678024	522	718902	6678025
461	718590	6678024	523	718904	6678024
462	718594	6678025	524	718909	6678022
463	718601	6678026	525	718910	6678021
464	718604	6678027	526	718915	6678018
465	718606	6678027	527	718916	6678018
466	718606	6678027	528	718916	6678018
467	718607	6678027	529	718919	6678015
468	718609	6678027	530	718919	6678015
469	718618	6678029	531	718919	6678015
470	718618	6678029	532	718920	6678015
471	718619	6678029	533	718923	6678013



Coordinate Number	Easting	Northing	Coordinate Number	Easting	Northing
472	718620	6678029	534	718927	6678011
473	718631	6678031	535	718927	6678011
474	718635	6678031	536	718935	6678003
475	718635	6678031	537	718937	6678002
476	718649	6678032	538	718938	6678000
539	718940	6677998	601	718972	6677730
540	718950	6677988	602	718970	6677723
541	718951	6677987	603	718969	6677716
542	718951	6677986	604	718968	6677711
543	718955	6677982	605	718966	6677701
544	718958	6677978	606	718966	6677700
545	718963	6677970	607	718966	6677699
546	718965	6677967	608	718965	6677696
547	718967	6677964	609	718951	6677618
548	718967	6677963	610	718952	6677616
549	718969	6677961	611	718952	6677611
550	718972	6677957	612	718952	6677610
551	718973	6677955	613	718952	6677602
552	718975	6677952	614	718952	6677599
553	718977	6677947	615	718953	6677592
554	718977	6677946	616	718953	6677591
555	718978	6677943	617	718953	6677590
556	718979	6677941	618	718953	6677581
557	718980	6677939	619	718953	6677581
558	718981	6677936	620	718953	6677580
559	718983	6677931	621	718953	6677578
560	718984	6677928	622	718953	6677577
561	718984	6677927	623	718953	6677576
562	718985	6677927	624	718953	6677576
563	718985	6677926	625	718954	6677576
564	718985	6677925	626	718955	6677573
565	718986	6677920	627	718956	6677569
566	718986	6677918	628	718957	6677566
567	718986	6677917	629	718960	6677559
568	718986	6677915	630	718960	6677558
569	718986	6677913	631	718964	6677548
570	718987	6677908	632	718965	6677546
571	718987	6677907	633	718965	6677545
572	718987	6677907	634	718969	6677535
573	718987	6677904	635	718970	6677532
574	718988	6677901	636	718973	6677522
575	718988	6677900	637	718974	6677521
576	718988	6677899	638	718977	6677512
577	718988	6677897	639	718978	6677510
578	718988	6677895	640	718979	6677506
579	718989	6677894	641	718980	6677504
580	718989	6677893	642	718981	6677500
581	718989	6677890	643	718982	6677500
582	718989	6677887	644	718982	6677498
583	718989	6677884	645	718985	6677490
584	718989	6677882	646	718985	6677489
585	718989	6677881	647	718991	6677479
586	718989	6677881	648	718992	6677477
587	718989	6677881	649	718992	6677476
588	718990	6677877	650	718993	6677475
589	718990	6677875	651	718993	6677474
590	718990	6677874	652	718993	6677474
591	718990	6677868	653	718993	6677474
592	718990	6677868	654	718994	6677472
593	718990	6677867	655	718994	6677472
594	718990	6677864	656	718995	6677470

<b>Coordinate Number</b>	<b>Easting</b>	<b>Northing</b>	<b>Coordinate Number</b>	<b>Easting</b>	<b>Northing</b>
595	718989	6677857	657	718996	6677469
596	718989	6677854	658	718996	6677469
597	718984	6677823	659	718998	6677465
598	718984	6677819	660	718998	6677465
599	718983	6677818	661	718998	6677465
600	718972	6677732	662	718999	6677462
663	719000	6677461	694	717322	6678129
664	719001	6677459	695	717334	6678215
665	719004	6677453	696	717343	6678213
666	719004	6677452	697	717345	6678212
667	719007	6677447	698	717350	6678211
668	719007	6677447	699	717363	6678208
669	719010	6677444	700	717365	6678207
670	719010	6677444	701	717364	6678199
671	719015	6677440	702	717363	6678195
672	719017	6677438	703	717362	6678184
673	719017	6677438	704	717361	6678183
674	719020	6677436	705	717360	6678176
675	719023	6677433	706	717359	6678166
676	719025	6677431	707	717359	6678166
677	719027	6677429	708	717359	6678166
678	719032	6677425	709	717361	6678165
679	719033	6677424	710	717362	6678165
680	717413	6678106	711	717365	6678164
681	717409	6678107	712	717372	6678162
682	717407	6678108	713	717375	6678161
683	717406	6678108	714	717379	6678160
684	717397	6678110	715	717389	6678158
685	717390	6678112	716	717400	6678155
686	717383	6678114	717	717405	6678153
687	717375	6678116	718	717407	6678153
688	717371	6678117	719	717410	6678152
689	717360	6678120	720	717413	6678152
690	717357	6678121	721	717413	6678151
691	717344	6678124	722	717415	6678151
692	717335	6678126	723	717418	6678150
693	717330	6678127	724	717420	6678150



## Attachment 4 to Ministerial Statement 982

### Change to proposal approved under section 45C of the *Environmental Protection Act 1986*

This Attachment replaces Schedules 1 and 3, and Attachments 1, 2 and 3 of Ministerial Statement 982

**Proposal:** Yilgarn Operations – Windarling Range, Mt Jackson Range and Deception Deposit – Shire of Yilgarn and Shire of Menzies.

**Proponent:** Yilgarn Iron Pty Ltd

#### Changes:

- Inclusion of the Altair Pit with an additional 8 hectares of disturbance
- Amend the Waste Rock Landform at Deception Deposit

**Table 1: Summary of the Proposal**

Proposal Title	Yilgarn Operations – Windarling Range, Mt Jackson Range and Deception Deposit – Shire of Yilgarn and Shire of Menzies.
Short Description	The proposal is to develop and operate above and below groundwater table open cut iron ore mine pits, waste rock landforms, ore stockpiles, haul roads and support infrastructure at the W1, W2, W3/5, W4 West, W4 East, W7 and W10 Pits at the Windarling Range; the J1, J2 and J3 Pits at the Mt Jackson Range, and the <b>Altair and Deception Pits</b> at Deception Deposit; located in the Shire of Yilgarn and the Shire of Menzies.

**Table 2: Location and authorised extent of physical and operational elements**

Element	Location	Previously Authorised Extent	Authorised Extent
Iron ore mine pits	Windarling Range – as defined in Figure 2 and by the spatial coordinates in Table 3, Table 4, Table 5 and Schedule 3.	Not more than 266 ha. <ul style="list-style-type: none"><li>• W1 East, W1 West, W2, W3/5, W7 and W10 to be mined below groundwater table.</li><li>• W2 to be backfilled above groundwater table.</li><li>• W4 West and W4 East to be mined above the groundwater table.</li></ul>	Not more than 266 ha. <ul style="list-style-type: none"><li>• W1 East, W1 West, W2, W3/5, W7 and W10 to be mined below groundwater table.</li><li>• W2 to be backfilled above groundwater table.</li><li>• W4 West and W4 East to be mined above the groundwater table.</li></ul>

Element	Location	Previously Authorised Extent	Authorised Extent
	<p>Mt Jackson Range – as defined in Figure 3 <del>and by the spatial coordinates in Schedule 3.</del></p> <p>Deception Deposit – as defined in Figure 4 <del>and by the spatial coordinates in Schedule 3.</del></p>	<p>Not more than 133 ha.</p> <ul style="list-style-type: none"> <li>• J1 East, J2 and J3 to be mined above groundwater table.</li> <li>• J1 West to be mined below groundwater table.</li> </ul> <p>Not more than 118 ha.</p> <ul style="list-style-type: none"> <li>• Deception Deposit to be mined below groundwater table.</li> </ul>	<p>Not more than 133 ha.</p> <ul style="list-style-type: none"> <li>• J1 East, J2 and J3 to be mined above groundwater table.</li> <li>• J1 West to be mined below groundwater table.</li> </ul> <p>Not more than <b>126</b> ha.</p> <ul style="list-style-type: none"> <li>• Deception to be mined below groundwater table.</li> <li>• <b>Altair Pit to be mined above groundwater table.</b></li> </ul>
Waste Rock Landforms	<p>Windarling Range – See Figure 2.</p> <p>Mt Jackson Range – See Figure 3.</p> <p>Deception Deposit – See Figure 4.</p>	<p>Not more than 433 ha.</p> <p>Not more than 263 ha.</p> <p>Not more than 258 ha.</p>	<p>Not more than 433 ha.</p> <p>Not more than 263 ha.</p> <p>Not more than <b>257</b> ha.</p>
Associated infrastructure (internal mine roads, ore stockpiles, rehabilitation material stockpiles, airstrip and other mine support facilities)	<p>Windarling Range – See Figure 2.</p> <p>Mt Jackson Range – See Figure 3.</p> <p>Deception Deposit – See Figure 4.</p>	<p>Not more than 235 ha, including 25.1 hectares for Windarling Range Airstrip and 6 ha for Road Train Haulage Parking Area.</p> <p>Not more than 259 ha.</p> <p>Not more than 53 ha.</p>	<p>Not more than 235 ha, including 25.1 hectares for Windarling Range Airstrip and 6 ha for Road Train Haulage Parking Area.</p> <p>Not more than 259 ha.</p> <p>Not more than 53 ha.</p>
Haul Roads	Figures 1 to 4.	Not more than 609 ha.	Not more than 609 ha.

Note: Text in **bold** and strikethrough in Table 2 indicates a change to the proposal.



**Figures - all previous Figures in Attachment 3 are replaced by the following:**

- Figure 1 Yilgarn Operations - Regional Location and General Layout
- Figure 2 Yilgarn Operations - Windarling Range Mine Operations General Mine Layout
- Figure 3 Yilgarn Operations - Mt Jackson Range Mine Operations General Mine Layout
- Figure 4 Yilgarn Operations - Deception Deposit Mine Operations General Mine Layout

**Tables – Tables 3, 4 and 5 in Attachment 3 are replaced by Schedule 4**

[Signed 26 October 2020]

**Dr Tom Hatton**

CHAIRMAN

Environmental Protection Authority  
under delegated authority



**Figure 1: Yilgarn Operations – Regional Location and General Layout**





Figure 2: Yilgarn Operations – Windarling Range Mine Operations General Mine Layout







**Figure 4: Yilgarn Operations – Deception Deposit Mine Operations General Mine Layout**

#### **Schedule 4**

Coordinates defining the areas shown in Figures 1, 2, 3 and 4 are held by the Department of Water and Environmental Regulation under the following reference number:

Development Envelope: DWERDT280557

All coordinates are in metres, listed in Map Grid of Australia Zone (MGA Zone 50), datum of Geocentric Datum of Australia 2020 (GDA2020).



## Attachment 5 to Ministerial Statement 982

### Change to proposal approved under section 45C of the *Environmental Protection Act 1986*

---

This Attachment replaces Attachment 4 of Ministerial Statement 982

---

**Proposal:** Yilgarn Operations – Windarling Range, Mt Jackson Range and Deception Deposit – Shire of Yilgarn and Shire of Menzies.

**Proponent:** Yilgarn Iron Pty Ltd

---

**Changes:**

- Altair Pit to be mined below groundwater table

**Table 1: Summary of the Proposal**

Proposal Title	Yilgarn Operations – Windarling Range, Mt Jackson Range and Deception Deposit – Shire of Yilgarn and Shire of Menzies.
Short Description	The proposal is to develop and operate above and below groundwater table open cut iron ore mine pits, waste rock landforms, ore stockpiles, haul roads and support infrastructure at the W1, W2, W3/5, W4 West, W4 East, W7 and W10 Pits at the Windarling Range; the J1, J2 and J3 Pits at the Mt Jackson Range, and the Altair and Deception Pits at Deception Deposit; located in the Shire of Yilgarn and the Shire of Menzies.

**Table 2: Location and authorised extent of physical and operational elements**

Element	Location	Previously Authorised Extent	Authorised Extent
Iron ore mine pits	Windarling Range – as defined in Figure 2.	Not more than 266 ha. <ul style="list-style-type: none"><li>• W1 East, W1 West, W2, W3/5, W7 and W10 to be mined below groundwater table.</li><li>• W2 to be backfilled above groundwater table.</li><li>• W4 West and W4 East to be mined above the groundwater table.</li></ul>	Not more than 266 ha. <ul style="list-style-type: none"><li>• W1 East, W1 West, W2, W3/5, W7 and W10 to be mined below groundwater table.</li><li>• W2 to be backfilled above groundwater table.</li><li>• W4 West and W4 East to be mined above the groundwater table.</li></ul>

Element	Location	Previously Authorised Extent	Authorised Extent
	Mt Jackson Range – as defined in Figure 3.	Not more than 133 ha. <ul style="list-style-type: none"> <li>• J1 East, J2 and J3 to be mined above groundwater table.</li> <li>• J1 West to be mined below groundwater table.</li> </ul>	Not more than 133 ha. <ul style="list-style-type: none"> <li>• J1 East, J2 and J3 to be mined above groundwater table.</li> <li>• J1 West to be mined below groundwater table.</li> </ul>
	Deception Deposit – as defined in Figure 4.	Not more than 126 ha. <ul style="list-style-type: none"> <li>• Deception Deposit to be mined below groundwater table.</li> <li>• Altair Pit to be mined above groundwater table.</li> </ul>	Not more than 126 ha. <ul style="list-style-type: none"> <li>• Deception to be mined below groundwater table.</li> <li>• <b>Altair Pit to be mined below groundwater table and backfilled above groundwater table.</b></li> </ul>
Waste Rock Landforms	Windarling Range – See Figure 2.	Not more than 433 ha.	Not more than 433 ha.
	Mt Jackson Range – See Figure 3.	Not more than 263 ha.	Not more than 263 ha.
	Deception Deposit – See Figure 4.	Not more than 257 ha.	Not more than 257 ha.
Associated infrastructure (internal mine roads, ore stockpiles, rehabilitation material stockpiles, airstrip and other mine support facilities)	Windarling Range – See Figure 2.	Not more than 235 ha, including 25.1 hectares for Windarling Range Airstrip and 6 ha for Road Train Haulage Parking Area.	Not more than 235 ha, including 25.1 hectares for Windarling Range Airstrip and 6 ha for Road Train Haulage Parking Area.
	Mt Jackson Range – See Figure 3.	Not more than 259 ha.	Not more than 259 ha.
	Deception Deposit – See Figure 4.	Not more than 53 ha.	Not more than 53 ha.
Haul Roads	Figures 1 to 4.	Not more than 609 ha.	Not more than 609 ha.

Note: Text in **bold** in Table 2 indicates a change to the proposal.



- Figure 1 Yilgarn Operations - Regional Location and General Layout
- Figure 2 Yilgarn Operations - Windarling Range Mine Operations General Mine Layout
- Figure 3 Yilgarn Operations - Mt Jackson Range Mine Operations General Mine Layout
- Figure 4 Yilgarn Operations - Deception Deposit Mine Operations General Mine Layout

A handwritten signature in blue ink, appearing to read 'MT' followed by a stylized flourish.

**Prof. Matthew Tonts**

CHAIR

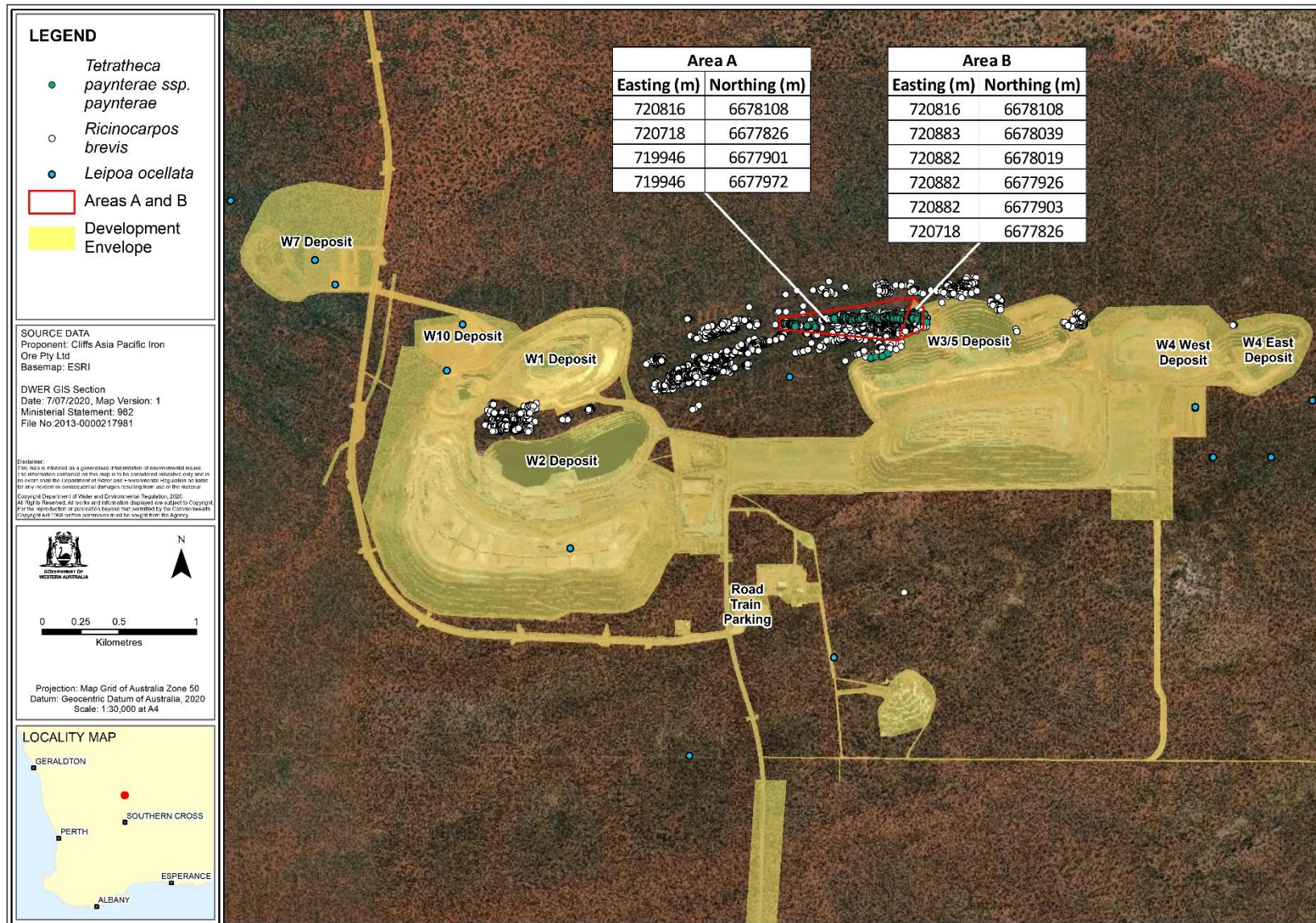
Environmental Protection Authority  
under delegated authority

Approval date: 22 December 2021



**Figure 1: Yilgarn Operations – Regional Location and General Layout**





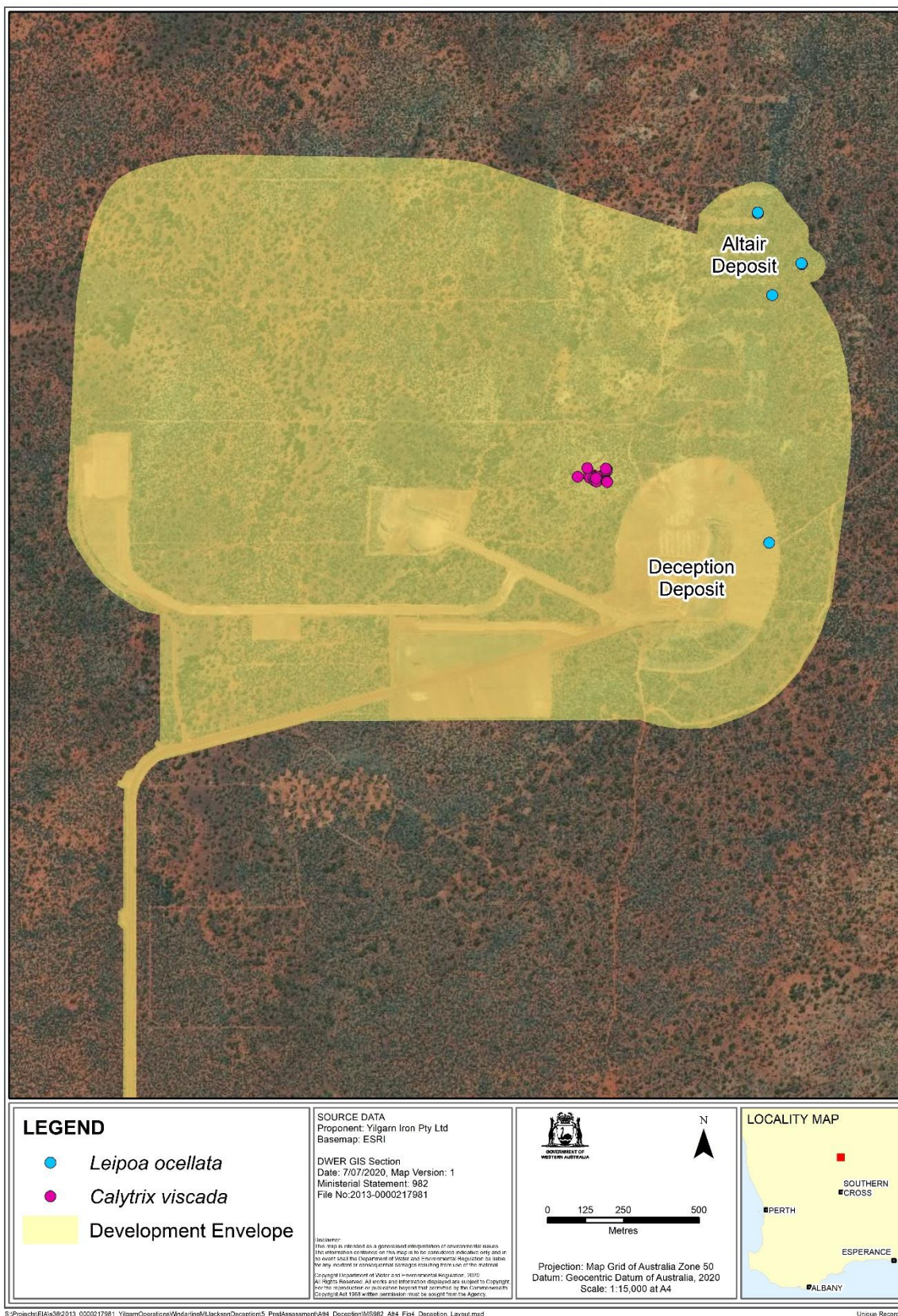
**Figure 2: Yilgarn Operations – Windarling Range Mine Operations General Mine Layout**





**Figure 3: Yilgarn Operations – Mt Jackson Range Mine Operations General Mine Layout**





**Figure 4: Yilgarn Operations – Deception Deposit Mine Operations General Mine Layout**

#### **Schedule 4**

Coordinates defining the areas shown in Figures 1, 2, 3 and 4 are held by the Department of Water and Environmental Regulation under the following reference number:

Development Envelope: DWERDT280557

All coordinates are in metres, listed in Map Grid of Australia Zone (MGA Zone 50), datum of Geocentric Datum of Australia 2020 (GDA2020).