

THIS DOCUMENT

This document has been produced by the Office of the Appeals Convenor as an electronic version of the original Statement for the proposal listed below as signed by the Minister and held by this Office. Whilst every effort is made to ensure its accuracy, no warranty is given as to the accuracy or completeness of this document.

The State of Western Australia and its agents and employees disclaim liability, whether in negligence or otherwise, for any loss or damage resulting from reliance on the accuracy or completeness of this document. Copyright in this document is reserved to the Crown in right of the State of Western Australia. Reproduction except in accordance with copyright law is prohibited.

Published on: 2 April 2014

Statement No:964

**STATEMENT THAT A PROPOSAL MAY BE IMPLEMENTED
(PURSUANT TO THE PROVISIONS OF THE
ENVIRONMENTAL PROTECTION ACT 1986)**

Sorby Hills Silver Lead Zinc Project

Proposal: The proposal is to develop a silver, lead and zinc mine, associated infrastructure and processing facilities approximately 50 kilometres north of Kununurra, with the concentrate produced transported by road and shipped through Wyndham Port.

The Proposal is further documented in Schedule 1 of this Statement.

Proponent: Sorby Management Pty Ltd
Australian Company Number 145 292 486

Proponent Address: Level 3
2 Elizabeth Plaza
NORTH SYDNEY NSW 2060

Assessment Number: 1920

Report of the Environmental Protection Authority Number: 1491

This Statement authorises the implementation of the proposal described and documented in Columns 1 and 2 of Table 2 of Schedule 1. The implementation of the proposal is subject to the following implementation conditions and procedures and Schedule 3 details definitions of terms and phrases used in the implementation conditions and procedures.

1 Proposal Implementation

1-1 When implementing the proposal, the proponent shall not exceed the authorised extent of the proposal as defined in Column 3 of Table 2 in Schedule 1, unless amendments to the proposal and the authorised extent of the proposal has been approved under the EP Act.

2 Contact Details

- 2-1 The proponent shall notify the CEO of any change of its name, physical address or postal address for the serving of notices or other correspondence within 28 days of such change. Where the proponent is a corporation or an association of persons, whether incorporated or not, the postal address is that of the principal place of business or of the principal office in the State.

3 Time Limit for Proposal Implementation

- 3-1 The proponent shall not commence implementation of the proposal after the expiration of five years from the date of this Statement, and any commencement, within this five year period, must be substantial.
- 3-2 Any commencement of implementation of the proposal, within five years from the date of this Statement, must be demonstrated as substantial by providing the CEO with written evidence, on or before the expiration of five years from the date of this Statement.

4 Compliance Reporting

- 4-1 The proponent shall prepare and maintain a compliance assessment plan to the satisfaction of the CEO.
- 4-2 The proponent shall submit to the CEO the compliance assessment plan required by condition 4-1 at least six months prior to the first compliance assessment report required by condition 4-6, or prior to implementation, whichever is sooner.

The compliance assessment plan shall indicate:

- (1) the frequency of compliance reporting;
 - (2) the approach and timing of compliance assessments;
 - (3) the retention of compliance assessments;
 - (4) the method of reporting of potential non-compliances and corrective actions taken;
 - (5) the table of contents of compliance assessment reports; and
 - (6) public availability of compliance assessment reports.
- 4-3 The proponent shall assess compliance with conditions in accordance with the compliance assessment plan required by condition 4-1.
- 4-4 The proponent shall retain reports of all compliance assessments described in the compliance assessment plan required by condition 4-1 and shall make those reports available when requested by the CEO.
- 4-5 The proponent shall advise the CEO of any potential non-compliance within seven days of that potential non-compliance being known.

- 4-6 The proponent shall submit to the CEO the first compliance assessment report 15 months from the date of issue of this Statement addressing the 12 month period from the date of issue of this Statement and then annually from the date of submission of the first compliance assessment report.

The compliance assessment report shall:

- (1) be endorsed by the proponent's Managing Director / General Manager / Chief Executive Officer or a person delegated to sign on the Managing Director's / General Manager's / Chief Executive Officer's behalf;
- (2) include a statement as to whether the proponent has complied with the conditions;
- (3) identify all potential non-compliances and describe corrective and preventative actions taken;
- (4) be made publicly available in accordance with the approved compliance assessment plan; and
- (5) indicate any proposed changes to the compliance assessment plan required by condition 4-1.

5 Public Availability of Data

- 5-1 Subject to condition 5-2, within a reasonable time period approved by the CEO of the issue of this statement and for the remainder of the life of the proposal the proponent shall make publicly available, in a manner approved by the CEO, all validated environmental data (including sampling design, sampling methodologies, empirical data and derived information products (e.g. maps)) relevant to the assessment of this proposal and implementation of this Statement.

- 5-2 If any data referred to in condition 5-1 contains particulars of:

- (1) a secret formula or process; or
- (2) confidential commercially sensitive information;

the proponent may submit a request for approval from the CEO to not make this data publicly available. In making such a request the proponent shall provide the CEO with an explanation and reasons why the data should not be made publicly available.

6 Vegetation

- 6-1 The proponent shall ensure that groundwater abstraction associated with implementation of the proposal does not cause the loss of vegetation in excess of the 573 hectares clearing approved within the 1045 ha Project Development Envelope as shown in Figure 2 of Schedule 1 and defined by geographic coordinates in Schedule 2.

- 6-2 To verify that condition 6-1 is being met, the proponent shall develop a Groundwater Dependent Vegetation Monitoring and Management Plan in consultation with the DoW and DPaW to the requirements of the CEO.

The Groundwater Dependent Vegetation Monitoring and Management Plan shall include:

- (1) identification of potential impact monitoring and control sites;
- (2) the design of a survey to acquire baseline data, including groundwater dependent vegetation health and abundance parameters;
- (3) definition of groundwater dependent vegetation health and abundance parameters;
- (4) definition of environmental parameters to be monitored, including groundwater drawdown;
- (5) definition of monitoring frequency and timing;
- (6) identification of criteria to measure decline in groundwater dependent vegetation health; and
- (7) details of management actions and strategies to be implemented should the criteria defined pursuant to condition 6-2 (6) indicate a decline in groundwater dependent vegetation health that is attributable to the extraction of groundwater for the Sorby Hills Mine.

6-3 The proponent shall implement the Groundwater Dependent Vegetation Monitoring and Management Plan required by condition 6-2 prior to the start of dewatering until advised otherwise by the CEO.

6-4 Prior to the commencement of dewatering, the proponent shall implement the baseline monitoring survey required by condition 6-2 (2) for all sites identified in condition 6-2 (1) and submit the results to the CEO.

6-5 In the event that monitoring required by condition 6-3 indicates a decline in groundwater dependent vegetation health compared with the control sites identified in condition 6-1, the proponent shall provide a report to the CEO within 21 days of the decline being identified which:

- (1) describes the decline or change;
- (2) provides information which allows determination of the likely root cause of the decline or change; and
- (3) if considered likely to be the result of activities undertaken in implementing the proposal, proposes the actions and associated timelines to remediate the decline or change.

6-6 The proponent shall implement the actions identified in condition 6-5 (3) until the CEO determines that the remedial actions may cease.

6-7 The proponent may review and revise the Groundwater Dependent Vegetation Monitoring and Management Plan, to the requirements of the CEO.

6-8 The proponent shall review and revise the Groundwater Dependent Vegetation Monitoring and Management Plan as and when directed by the CEO.

- 6-9 The proponent shall implement revisions of the Groundwater Dependent Vegetation Monitoring and Management Plan approved under condition 6-7 or required by condition 6-8.

7 Concentrate handling, storage and transport

- 7-1 The proponent shall ensure that lead, zinc, and/or silver ore concentrates are not emitted to the surrounding environment during unloading, loading, or storage at Wyndham Port.
- 7-2 Prior to the commencement of concentrate production the proponent shall prepare a Wyndham Port Heavy Metals Survey Plan to the requirements of the CEO with the objective of establishing a pre-development baseline. The Wyndham Port Heavy Metals Survey Plan shall:
- (1) identify sampling sites at Wyndham Port;
 - (2) specify the profile depth to be sampled at each site;
 - (3) specify the levels of analytical detection required;
 - (4) establish the current levels of lead (including the lead isotope signature of the Sorby Hills lead sulphide deposit), silver and zinc present in the sediment at monitoring sites required by condition 7-2 (1) at the time of sampling; and
 - (5) detail the sampling methodology in accordance with ANZECC Guidelines for sediment sampling and the CSIRO Handbook for Sediment Quality Assessment (2005).
- 7-3 Prior to the commencement of concentrate production the proponent shall implement the approved Wyndham Port Heavy Metals Survey Plan and submit the results of that survey to the CEO.
- 7-4 Prior to the commencement of concentrate production the proponent shall prepare a Heavy Metals Monitoring Plan to the requirements of the CEO. The Heavy Metals Monitoring Plan shall:
- (1) when implemented, substantiate whether condition 7-1 is being met;
 - (2) detail a sediment sampling program for lead, silver and/or zinc (including the lead isotope ratio specifically attributable to the Sorby Hills lead sulphide deposit), silver and/or zinc which shall include the following:
 - (a) location of sample sites;
 - (b) frequency of sampling;
 - (c) the profile depth to be sampled;
 - (d) the level of analytical detection required;
 - (e) the methodology for evaluating the data to determine whether lead, silver or zinc from the Sorby Hills project has been detected, including the statistical power for detecting the presence of lead, silver or zinc attributable to the proposal;
 - (f) the number of replicate samples required; and

- (g) detail the sampling methodology in accordance with ANZECC Guidelines for sediment sampling and the CSIRO Handbook for Sediment Quality Assessment (2005).

- 7-5 In the event that monitoring required by condition 7-4 detects the presence of lead, silver or zinc attributable to implementation of the proposal, the proponent shall:
- (1) immediately cease loading operations; and
 - (2) provide a report to the CEO within three days of the lead, zinc or silver being detected which identifies management and/or contingency measures to be implemented to prevent further loss of lead, silver and/or zinc to the environment and remediate previous contamination attributed to implementation of this proposal.
- 7-6 The proponent shall implement the actions identified in condition 7-5 (2) until the CEO determines that the remedial actions may cease.
- 7-7 Prior to the commencement of concentrate production the proponent shall implement the Heavy Metals Monitoring Plan required by condition 7-4.
- 7-8 The proponent may review and revise the Heavy Metals Monitoring Plan, to the requirements of the CEO.
- 7-9 The proponent shall review and revise the Heavy Metals Monitoring Plan as and when directed by the CEO.
- 7-10 The proponent shall implement revisions of the Heavy Metals Monitoring Plan approved under condition 7-8 or required by condition 7-9.

[Signed 2 April 2014]

Albert Jacob MLA
MINISTER FOR ENVIRONMENT; HERITAGE

Table 1: Summary of the Proposal

Proposal Title	Sorby Hills Silver Lead Zinc Project
Short Description	The proposal is to develop a silver, lead and zinc mine and processing facility approximately 50 kilometres north of Kununurra, including construction of associated mine infrastructure (ROM pad, haul roads, laboratory, two evaporation ponds, evaporation basin, access road, power generation, hardstand area, diesel storage and refuelling area, workshop, site office, explosives magazine, potable water storage tank, bioremediation facility, landfill site, fire breaks and perimeter fence), discharge of waste to a TSF and road train transport of the concentrate produced to Wyndham Port for export.

Table 2: Location and authorised extent of physical and operational elements

Column 1	Column 2	Column 3
Element	Location	Authorised Extent
Mine and associated infrastructure	Figure 2 and geographic coordinates of the Project Development Envelope detailed in Schedule 3.	Clearing of not more than 573 ha within a 1045 ha development envelope.
Mineralised waste materials		No permanent waste dumps.
Dewatering		Up to 1.0 gigalitre per annum of uncontaminated waste water not used for operations discharged to an evaporation basin.
Concentrate transport method to Wyndham Port		Sealed 'Rotabox' (or equivalent standard) containers
Moisture content of concentrate		A minimum of 7%

Figures (attached)

Figure 1 Regional location

Figure 2 Sorby Hills Project Development Envelope, Development Exclusion Boundary and conceptual layout

Figure 3 Sorby Hills facilities at Wyndham Port

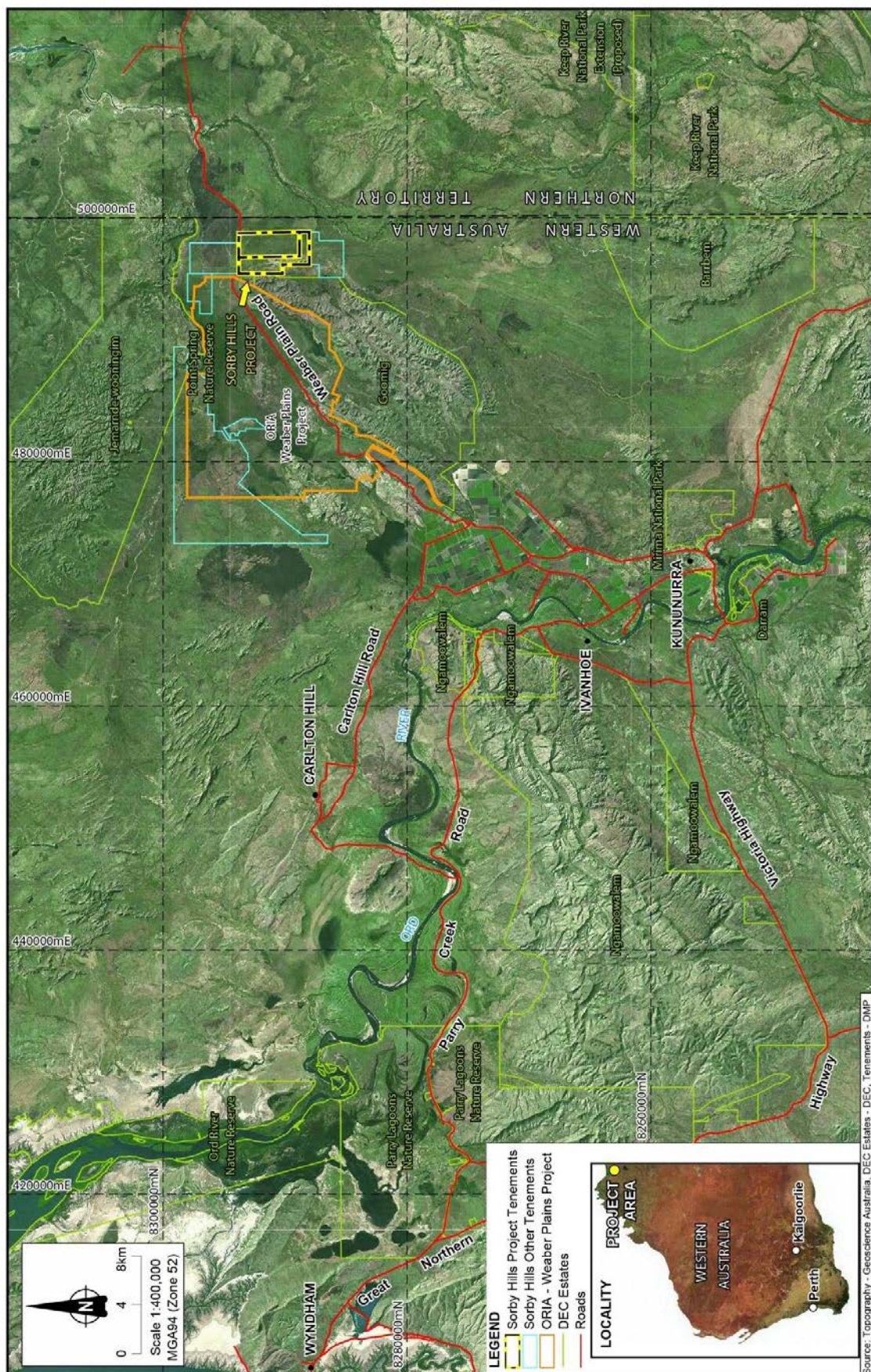


Figure 1: Regional location

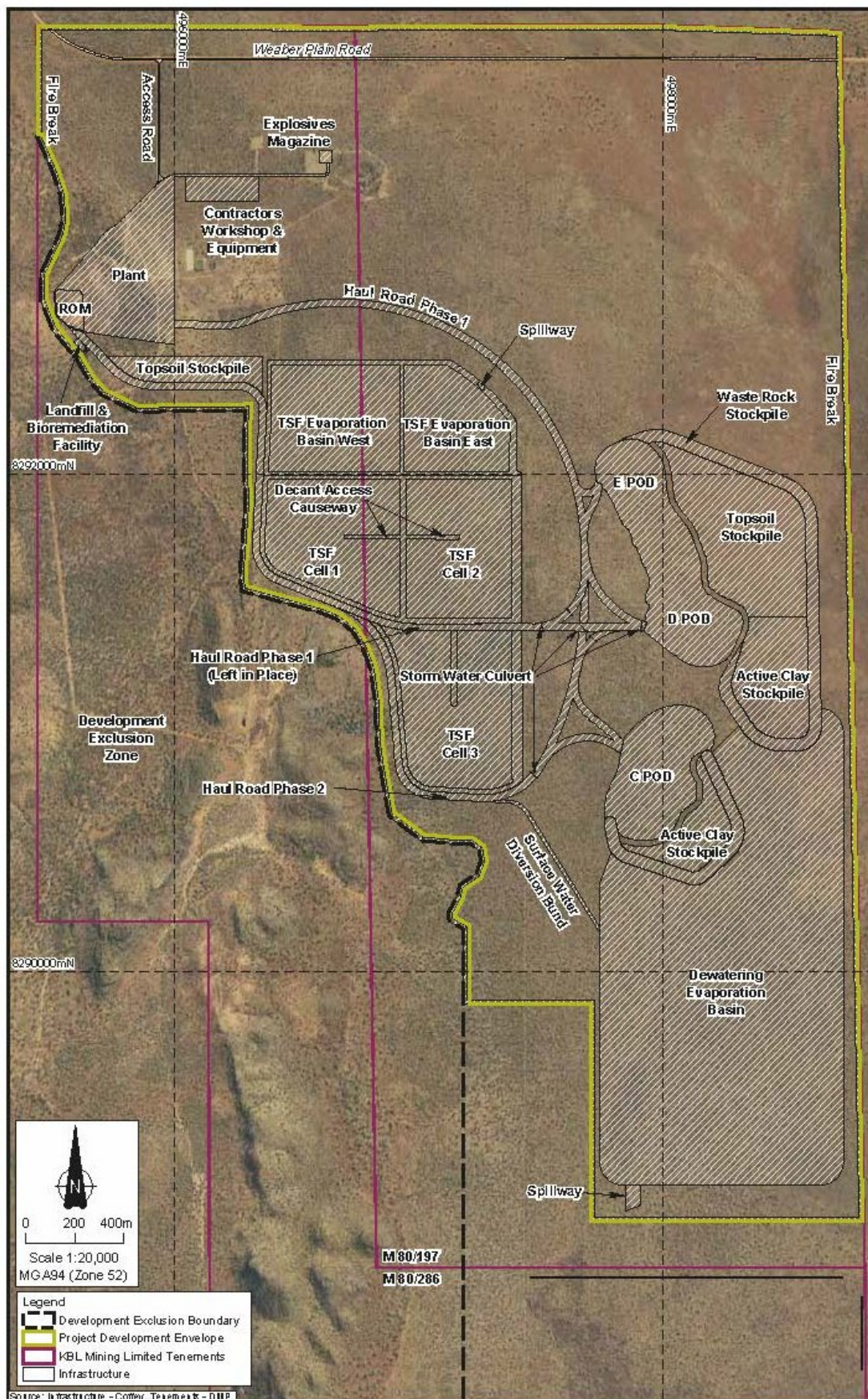


Figure 2: Sorby Hills Project Development Envelope, Development Exclusion Boundary and conceptual layout



Figure 3: Sorby Hills facilities at Wyndham Port

Schedule 2

Term or Phrase	Definition
ANZECC Guidelines for Sediment Sampling	The Australian and New Zealand Environment and Conservation Council and Agricultural and Resource Management Council of Australia <i>Australian Guidelines for Water Quality Monitoring and Reporting 2000</i> .
CEO	The Chief Executive Officer of the Department of the Public Service of the State responsible for the administration of section 48 of the <i>Environmental Protection Act 1986</i> , or his delegate.
DoW	Department of Water
DPaW	Department of Parks and Wildlife
EPA	Environmental Protection Authority
EP Act	<i>Environmental Protection Act 1986</i>
ha	hectare
TSF	Tailings Storage Facility
ROM	Run-of-mine

Notes

The following notes are provided for information and do not form a part of the implementation conditions of the Statement:

- The proponent for the time being nominated by the Minister for Environment under section 38(6) of the *Environmental Protection Act 1986* is responsible for the implementation of the proposal unless and until that nomination has been revoked and another person is nominated.
- If the person nominated by the Minister, ceases to have responsibility for the proposal, that person is required to provide written notice to the Environmental Protection Authority of its intention to relinquish responsibility for the proposal and the name of the person to whom responsibility for the proposal will pass or has passed. The Minister for Environment may revoke a nomination made under section 38(6) of the *Environmental Protection Act 1986* and nominate another person.
- To initiate a change of proponent, the nominated proponent and proposed proponent are required to complete and submit *Post Assessment Form 1 – Application to Change Nominated Proponent*.
- The General Manager of the Office of the Environmental Protection Authority was the Chief Executive Officer of the Department of the Public Service of the State responsible for the administration of section 48 of the *Environmental Protection Act 1986* at the time the Statement was signed by the Minister for Environment.

SORBY HILLS SILVER LEAD ZINC MINE

Coordinates that define the Project Development Envelope

Coordinates defining the Project Development Envelope are held by the Office of the EPA, dated 19 September 2013.

Attachment 1 to Ministerial Statement 964

Amendment to proposal and/or implementation conditions approved
under section 45C of the
Environmental Protection Act 1986

This Attachment replaces Schedule 1 and Schedule 3 of Ministerial Statement 964.

Proposal: Sorby Hills Silver Lead Zinc Project

Proponent: Sorby Management Pty Ltd

Changes:

- Access road extension to the realigned Moonamang Rd
- Inclusion of accommodation village
- Revision of Figures 1-3

Schedule 1

Table 1: Summary of the proposal

Proposal Title	Sorby Hills Silver Lead Zinc Project
Short Description	The proposal is to develop a silver, lead and zinc mine and processing facility approximately 50 kilometres north of Kununurra, including construction of associated mine infrastructure (ROM pad, haul roads, laboratory, two evaporation ponds, evaporation basin, access road, power generation, hardstand area, diesel storage and refuelling area, workshop, site office, explosives magazine, potable water storage tank, bioremediation facility, landfill site, fire breaks, accommodation village and perimeter fence), discharge of waste to a TSF and road train transport of the concentrate produced to Wyndham Port for export.

Table 2: Location and authorised extent of physical and operational elements

Proposal element	Location / description	Previously authorised maximum extent, capacity or range	Authorised maximum extent, capacity or range
Physical elements			
Mine and associated infrastructure	Figure 2 and geographic coordinates of the Project	Development Envelope detailed in Schedule 3. Clearing of not more than 573 ha within a 1045 ha development envelope	Development Envelope detailed in Schedule 3. Clearing of not more than 585 ha within a 1057 ha development envelope

Proposal element	Location / description	Previously authorised maximum extent, capacity or range	Authorised maximum extent, capacity or range
Mineralised waste materials		No permanent waste dumps.	No permanent waste dumps.
Dewatering		Up to 1.0 giganlitre per annum of uncontaminated waste water not used for operations discharged to an evaporation basin	Up to 1.0 giganlitre per annum of uncontaminated waste water not used for operations discharged to an evaporation basin
Concentrate transport method to Wyndham Port		Sealed 'Rotabox' (or equivalent standard) containers	Sealed 'Rotabox' (or equivalent standard) containers
Moisture content of concentrate		A minimum of 7%	A minimum of 7%

Note: Text in **bold** in Table 1 and Table 2 indicates a change to the proposal.

Figures (attached)

- Figure 1 Regional location
Figure 2 Sorby Hills Project Development Envelope and conceptual layout
Figure 3 Development Envelope at Wyndham Port

Schedule 3

Development Envelope Coordinates

Coordinates defining the Sorby Hills Silver Lead Zinc Project are held by the Department of Water and Environmental Regulation, document reference number **DWERDT534849** and **DWERDT599901**

Signed 20 June 2022

Professor Matthew Tonts

CHAIR

Environmental Protection Authority

Delegate of the Minister for Environment



Figure 1: Regional location

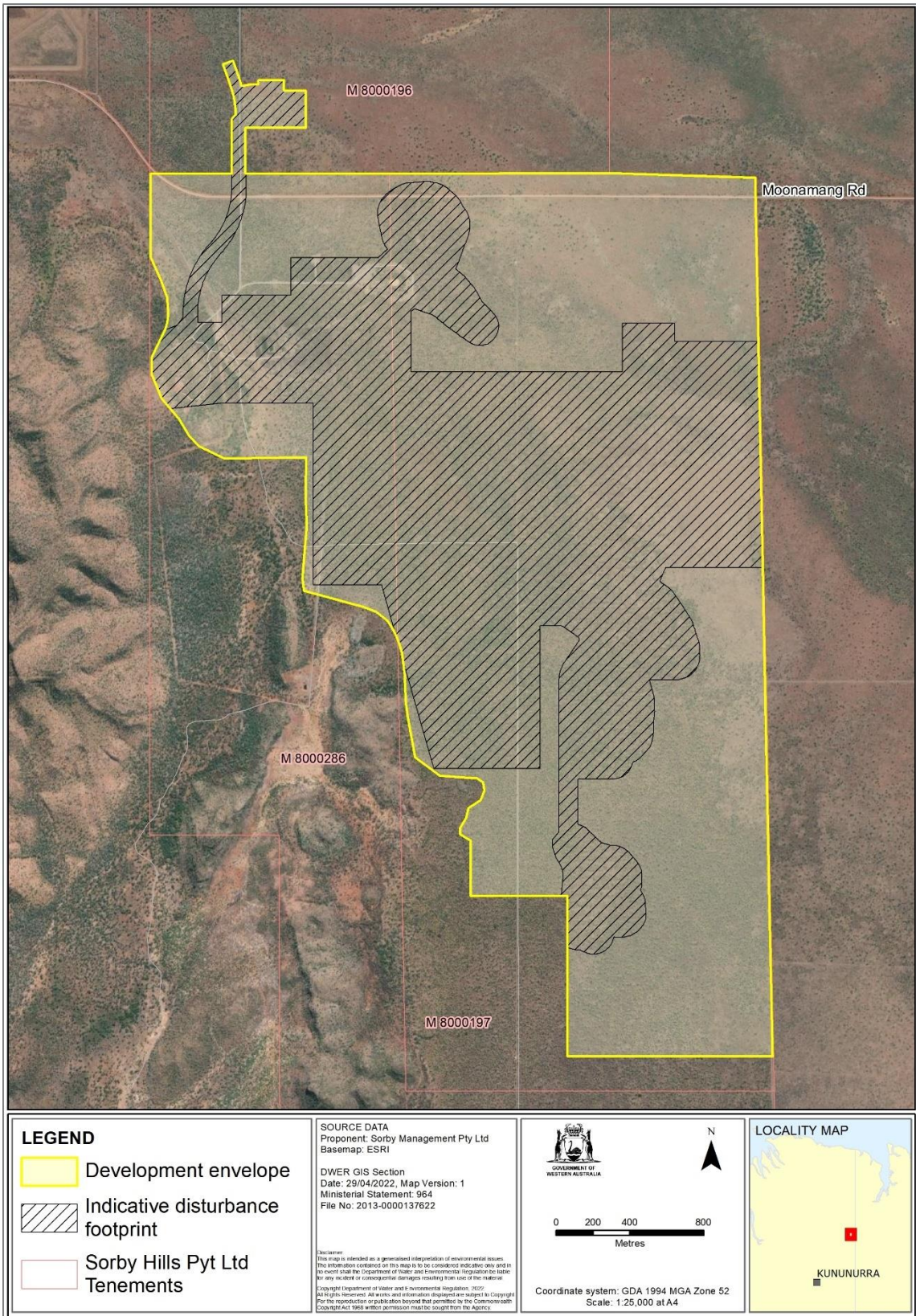


Figure 2: Sorby Hills Project Development Envelope and indicative disturbance footprint



Figure 3: Development Envelope at Wyndham Port

Attachment 2 to Ministerial Statement 964

Amendment to proposal and implementation conditions approved under section 45C of the *Environmental Protection Act 1986*

This Attachment replaces the introduction, condition 6-1, Schedule 1, Schedule 2, Schedule 3, and Attachment 1 of Ministerial Statement 964.

Proposal: Sorby Hills Silver Lead Zinc Project

Proponent: Sorby Hills Management Pty Ltd

Changes:

- An increase to the development envelope, and realignment of an access road.
 - Addition of three new pits, expansion of pits, and increase the maximum pit depth.
 - Removal of maximum excavation rate of ore, increase the construction timeframe, removal of maximum mineralised waste materials limit, increase to the storage volume of tailings, and change the tailings storage facility to an integrated waste landform.
 - Increase to the dewatering limit.
 - Increase to the maximum discharge limit and change the method of excess water disposal.
 - Remove the minimum moisture content of ore concentrate.
 - Amendment of the introduction of Ministerial Statement 964.
 - Amendment of condition 6-1 of Ministerial Statement 964.
 - Addition of condition 8 (Aboriginal Cultural Heritage) and condition 9 (Rehabilitation) to Ministerial Statement 964.
-

The introduction of Ministerial Statement 964 is deleted and replaced with:

Introduction: Pursuant to section 45 of the *Environmental Protection Act 1986*, it has been agreed that the proposal entitled Sorby Hills Silver Lead Zinc Project described in the 'Proposal Content Document' dated 17 December 2024, may be implemented and that the implementation of the proposal is subject to the following implementation conditions and procedures.

Condition 6-1 of Ministerial Statement 964 is deleted and replaced with:

- 6-1 The proponent shall ensure that **groundwater abstraction** associated with implementation of the proposal does not cause the loss of vegetation in excess of the authorised clearing extent of 585 hectares, within the

development envelope as shown in Figure 2 of Schedule 1 and defined by geographic coordinates in Schedule 3.

Addition of new conditions 8 and 9 to Ministerial Statement 964:

8 Aboriginal Cultural Heritage

- 8-1 The proponent must implement the proposal to meet the following environmental **outcome**:
- (1) subject to reasonable health and safety requirements, no interruption of ongoing access to land utilised for traditional use or custom by the **relevant Traditional Owners**; and
- 8-2 The proponent must implement the proposal to meet the following environmental **objective**:
- (1) avoid, where practicable, and otherwise minimise **adverse impacts** to **Aboriginal cultural heritage** within and surrounding the **development envelope**.
- 8-3 The proponent must take reasonable steps to consult with the **relevant Traditional Owners** about the achievement of the **outcomes** in condition 8-1 and condition 9-1 and the **objective** in condition 8-2 for the life of the proposal.

9 Rehabilitation

- 9-1 The proponent must implement the proposal to meet the following environmental **outcomes**:
- (1) rehabilitated landforms, including pit lakes, are stable and do not cause **adverse impacts** to adjacent areas, cause **pollution** or **environmental harm**;
 - (2) the post-mining profile, including rehabilitated landforms, will be designed in consideration of visually integrating into the surrounding undisturbed landscape;
 - (3) rehabilitated vegetation is **self-sustaining**;
 - (4) rehabilitated areas are consistent with the species diversity and abundance of native vegetation within comparative analogue or **reference sites**;
 - (5) rehabilitation includes the use of native seeds collected from native vegetation adjacent to the proposal; and
 - (6) closure planning and rehabilitation are undertaken in a progressive manner consistent with achievement of the above **outcomes** during operations, where practicable, and as soon as practicable upon closure.
- 9-2 The proponent must include the environmental **outcomes** of condition 9-1 in the Mine Closure Plan required under the *Mining Act 1978* and submitted for approval to the Department of Energy, Mines, Industry Regulation and Safety.

Schedule 1

Table 1: Summary of the proposal

Proposal title	Sorby Hills Silver Lead Zinc Project
Short description	The proposal is to develop a silver, lead and zinc mine and processing facility approximately 50 kilometres north of Kununurra, including construction of associated mine infrastructure (ROM pad, haul roads, laboratory, two evaporation ponds, evaporation basins , access road, power generation, hardstand area, diesel storage and refuelling area, workshop, site office, explosives magazine, potable water storage tank, bioremediation facility, landfill site, fire breaks, accommodation village and perimeter fence), discharge of waste to an integrated waste landform and road train transport of the concentrate produced to Wyndham Port for export.

Table 2: Location and authorised extent of physical and operational elements

Proposal element	Location/ description	Previously authorised maximum extent, capacity or range	Authorised maximum extent, capacity or range
Mine and associated infrastructure	Figure 2 and the geographic coordinates in Schedule 3.	Clearing of not more than 585 ha within a 1057 ha development envelope.	Clearing of not more than 585 ha within a 1,159 ha development envelope.
Mineralised waste materials	N/A	No permanent waste dumps.	No permanent waste dumps.
Dewatering	N/A	Up to 1.0 gigalitre per annum of uncontaminated waste water not used for operations discharged to an evaporation basin.	Up to 6.5 gigalitres per annum.
Discharge	Within the evaporation basins and mine pits in Figure 2 and the geographic coordinates in Schedule 3.	Up to 1.0 gigalitre per annum of uncontaminated waste water not used for operations discharged to an evaporation basin.	Up to 6.5 GL/a of uncontaminated waste water not used for operations, discharged: <ul style="list-style-type: none"> • to pit voids, or • via mechanical evaporation, or • to evaporation basins up to a

Proposal element	Location/ description	Previously authorised maximum extent, capacity or range	Authorised maximum extent, capacity or range
			maximum of 3.0 GL/a.
Concentrate transport method to Wyndham Port	N/A	Sealed 'Rotabox' (or equivalent standard) containers.	Sealed 'Rotabox' (or equivalent standard) containers.
Moisture content of concentrate	N/A	A minimum of 7%	Removed.

Note: Text in **bold** in Table 1 and Table 2 indicates a change to the proposal.

Figures (attached)

Figure 1: Regional location

Figure 2: Sorby Hills Silver Lead Zinc Project development envelope and indicative disturbance footprint.

Figure 3: Development Envelope at Wyndham Port

Schedule 2

Term or Phrase	Definition
Aboriginal cultural heritage	Means the tangible and intangible elements that are important to the Aboriginal people of the State, and are recognised through social, spiritual, historical, scientific or aesthetic values, as part of Aboriginal tradition to the extent they directly affect or are affected by physical or biological surroundings.
Adverse impacts	Negative change that is neither trivial nor negligible that could result in a reduction in health, diversity or abundance of the receptor/s being impacted, or a reduction in environmental value. Adverse impacts can arise from direct or indirect impacts, or other impacts from the proposal. In relation to Aboriginal cultural heritage , this includes but is not limited to, hydrological change, introduction or spread of non-indigenous flora and/or fauna, alteration of fauna behaviour, artificial light, dust, vibration, and noise emissions.
ANZECC Guidelines for Sediment Sampling	The Australian and New Zealand Environment and Conservation Council and Agricultural and Resource Management Council of Australia Australian Guidelines for Water Quality Monitoring and Reporting 2000.

Development envelope	The spatial area as depicted in Figure 2 and Figure 3 and defined by geographic coordinates in Schedule 3.
DoW	Department of Water.
DPaW	Department of Parks and Wildlife.
Environmental harm	Has the meaning provided by section 3A(2) of the EP Act .
EP Act	<i>Environmental Protection Act 1986</i> .
Groundwater abstraction	The process of taking water from a ground source.
ha	hectare(s).
Management actions	The identified actions implemented with the intent of to achieving the environmental objective.
Objective/s	An objective is the proposal-specific desired state for an environmental factor/s to be achieved from the implementation of management actions .
Outcome/s	A proposal-specific result to be achieved when implementing the proposal.
Pollution	Has the meaning provided by section 3A(1) of the EP Act .
Reference sites	A site with comparable condition and similar values considered to be a suitable benchmark or baseline.
Relevant Traditional Owners	In relation to the land subject to the proposal, means one or more of the following: <ul style="list-style-type: none"> - a registered native title body corporate for the land; or - a registered native title claimant for the land; or - a group of persons with Aboriginal traditional and cultural associations with the land
Self-sustaining	Refers to vegetation that can survive (continue indefinitely) without on-going management actions such as watering, weed control or infill planting.
ROM	Run-of-mine.

Schedule 3

Development Envelope Coordinates

Coordinates defining the Sorby Hills Silver Lead Zinc Project are held by the Department of Water and Environmental Regulation, document reference number DWER-801164602-350004.



Darren Walsh

CHAIR

Environmental Protection Authority
under delegated authority

Approval date: 18 December 2024

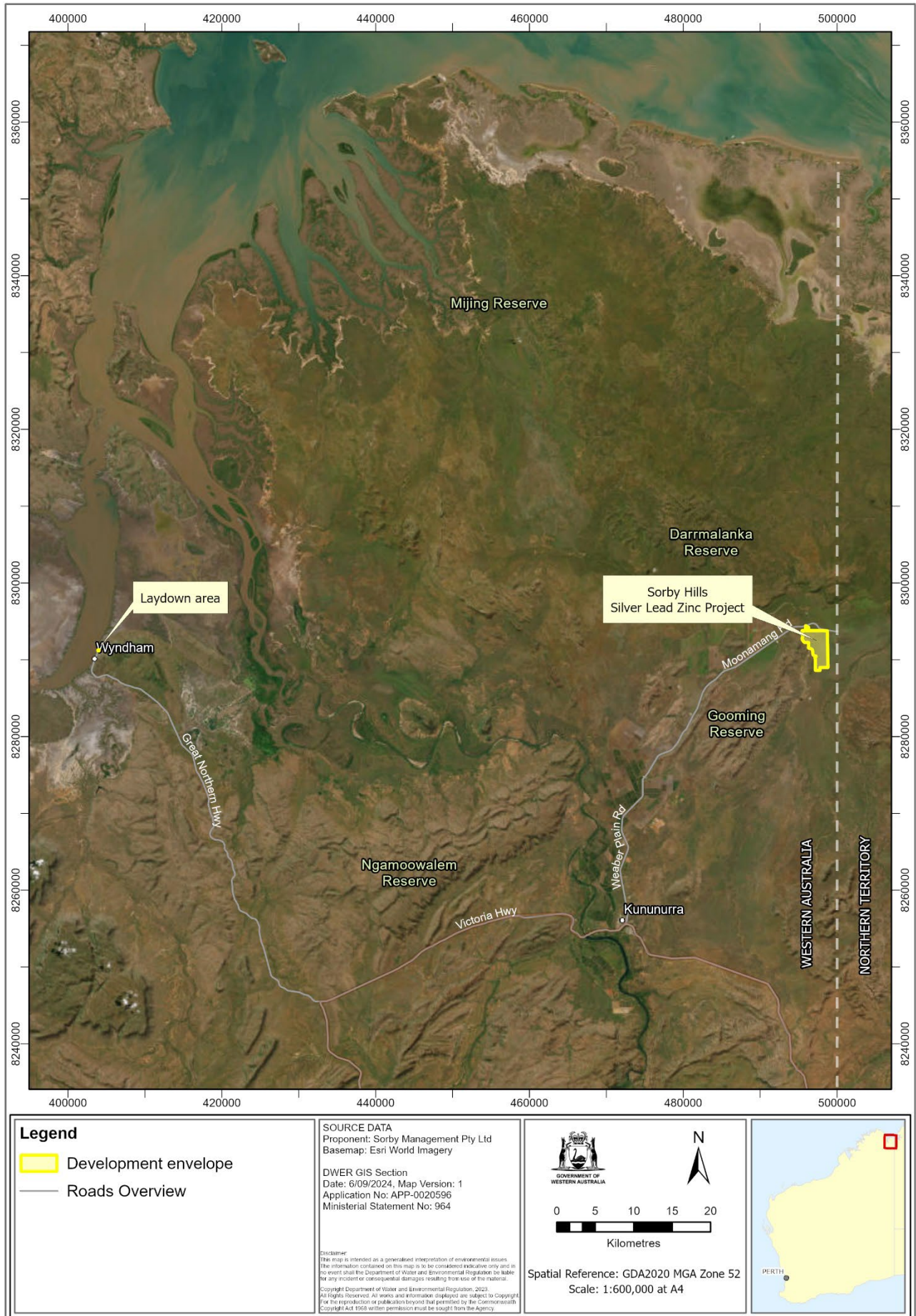


Figure 1: Regional location.

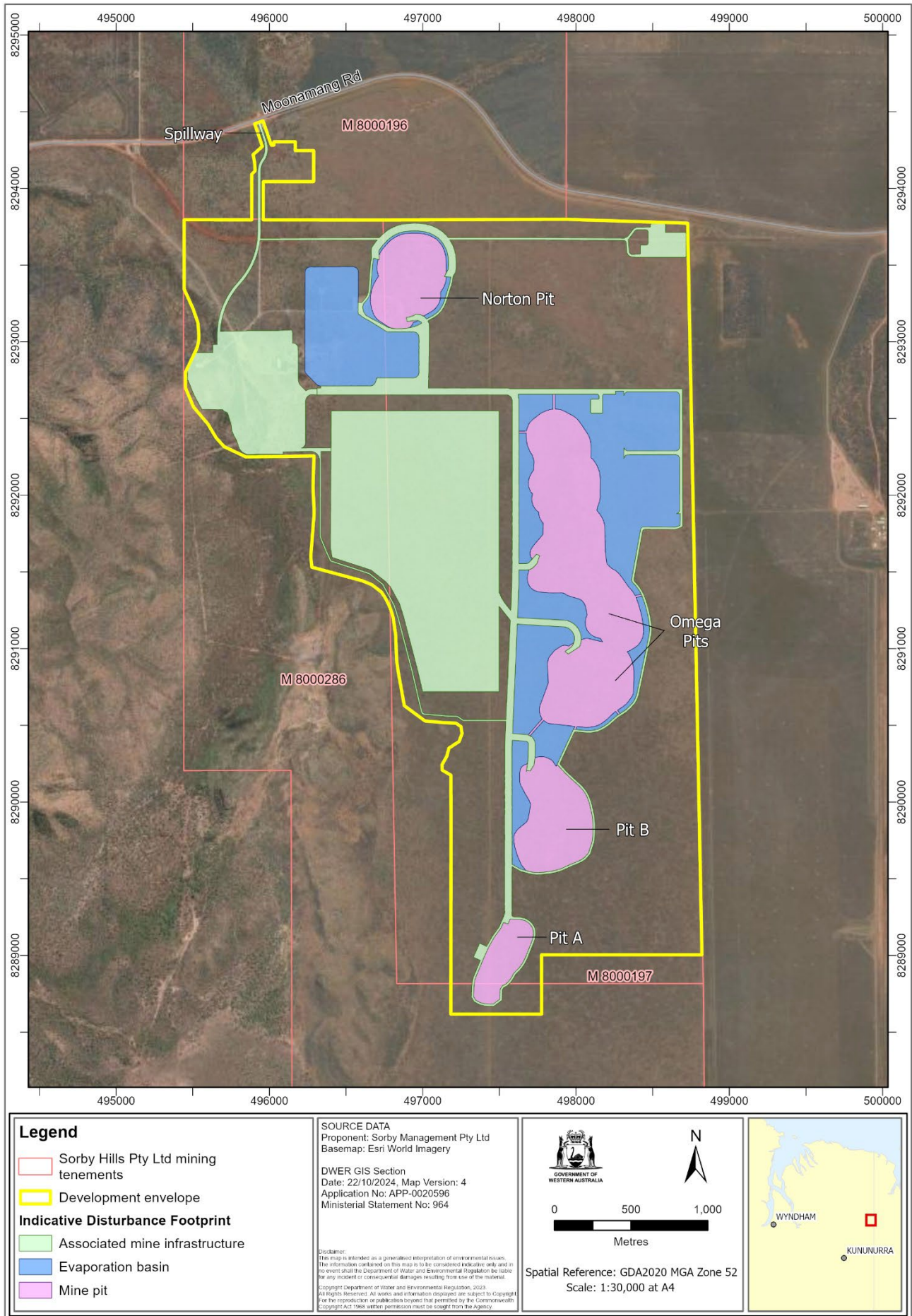


Figure 2: Sorby Hills Project Development Envelope and indicative disturbance footprint.



Figure 3: Development Envelope at Wyndham Port