

THIS DOCUMENT

This document has been produced by the Office of the Appeals Convenor as an electronic version of the original Statement for the proposal listed below as signed by the Minister and held by this Office. Whilst every effort is made to ensure its accuracy, no warranty is given as to the accuracy or completeness of this document.

The State of Western Australia and its agents and employees disclaim liability, whether in negligence or otherwise, for any loss or damage resulting from reliance on the accuracy or completeness of this document. Copyright in this document is reserved to the Crown in right of the State of Western Australia. Reproduction except in accordance with copyright law is prohibited.

Published on: 21 August 2013

Statement No. 945

**STATEMENT THAT A PROPOSAL MAY BE IMPLEMENTED
(PURSUANT TO THE PROVISIONS OF THE
ENVIRONMENTAL PROTECTION ACT 1986)**

Balla Balla Export Facilities

Proposal: The proposal is to construct and operate an iron ore export facility at Balla Balla midway between Port Hedland and Karratha, northwest of Whim Creek in the Pilbara region of WA.

Proponent: Forge Resources Swan Pty Ltd
Australian Company Number 149 783 068

Proponent Address: Level 24
56 Pitt Street
SYDNEY NSW 2000

Assessment Number: 1969

Report of the Environmental Protection Authority Number: 1481

This Statement authorises the implementation of the proposal described and documented in Columns 1 and 2 of Table 2 of Schedule 1. The implementation of the proposal is subject to the following implementation conditions and procedures and Schedule 2 details definitions of terms and phrases used in the implementation conditions and procedures.

1 Proposal Implementation

1-1 When implementing the proposal, the proponent shall not exceed the authorised extent of the proposal as defined in Column 3 of Table 2 in Schedule 1, unless amendments to the proposal and the authorised extent of the proposal has been approved under the EP Act.

2 Contact Details

- 2-1 The proponent shall notify the CEO of any change of its name, physical address or postal address for the serving of notices or other correspondence within twenty eight (28) days of such change. Where the proponent is a corporation or an association of persons, whether incorporated or not, the postal address is that of the principal place of business or of the principal office in the State.

3 Time Limit for Proposal Implementation

- 3-1 The proponent shall not commence implementation of the proposal after the expiration of five (5) years from the date of this Statement, and any commencement, within this five (5) year period, must be substantial.
- 3-2 Any commencement of implementation of the proposal, within five (5) years from the date of this Statement, must be demonstrated as substantial by providing the CEO with written evidence, on or before the expiration of five (5) years from the date of this Statement.

4 Compliance Reporting

- 4-1 The proponent shall prepare and maintain a compliance assessment plan to the satisfaction of the CEO.
- 4-2 The proponent shall submit to the CEO the compliance assessment plan required by condition 4-1 at least six (6) months prior to the first compliance assessment report required by condition 4-6, or prior to implementation, whichever is sooner.

The compliance assessment plan shall indicate:

- (1) the frequency of compliance reporting;
 - (2) the approach and timing of compliance assessments;
 - (3) the retention of compliance assessments;
 - (4) the method of reporting of potential non-compliances and corrective actions taken;
 - (5) the table of contents of compliance assessment reports; and
 - (6) public availability of compliance assessment reports.
- 4-3 The proponent shall assess compliance with conditions in accordance with the compliance assessment plan required by condition 4-1.
- 4-4 The proponent shall retain reports of all compliance assessments described in the compliance assessment plan required by condition 4-1 and shall make those reports available when requested by the CEO.
- 4-5 The proponent shall advise the CEO of any potential non-compliance within seven days of that potential non-compliance being known.

- 4-6 The proponent shall submit to the CEO the first compliance assessment report fifteen (15) months from the date of issue of this Statement addressing the twelve (12) month period from the date of issue of this Statement and then annually from the date of submission of the first compliance assessment report.

The compliance assessment report shall:

- (1) be endorsed by the proponent's Managing Director or a person delegated to sign on the Managing Director's behalf;
- (2) include a statement as to whether the proponent has complied with the conditions;
- (3) identify all potential non-compliances and describe corrective and preventative actions taken;
- (4) be made publicly available in accordance with the approved compliance assessment plan; and
- (5) indicate any proposed changes to the compliance assessment plan required by condition 4-1.

5 Public Availability of Data

- 5-1 Subject to condition 5-2, within a reasonable time period approved by the CEO of the issue of this statement and for the remainder of the life of the proposal the proponent shall make publicly available, in a manner approved by the CEO, all validated environmental data (including sampling design, sampling methodologies, empirical data and derived information products (e.g. maps)) relevant to the assessment of this proposal and implementation of this Statement.

- 5-2 If any data referred to in condition 5-1 contains particulars of:

- (1) a secret formula or process; or
- (2) confidential commercially sensitive information;

the proponent may submit a request for approval from the CEO to not make this data publicly available. In making such a request the proponent shall provide the CEO with an explanation and reasons why the data should not be made publicly available.

6 Benthic Communities and Habitat

- 6-1 The proponent shall ensure that implementation of the proposal is managed to minimise indirect impacts to benthic primary producer communities and ensure that the clearing of intertidal benthic primary producer communities does not exceed the authorised extent set out in Column 3 of Schedule 1.

- 6-2 Prior to the commencement of construction of the proposal, unless otherwise agreed by the CEO, the proponent shall prepare an Intertidal Benthic Primary Producer Habitat Survey Plan which is to be approved by the CEO.

- 6-3 The Intertidal Benthic Primary Producer Habitat Survey Plan required by condition 6-2 shall:
- (1) map the intertidal benthic primary producer habitats within and surrounding the development envelope; and
 - (2) identify the locations of intertidal benthic primary producer communities listed in Column 3 of Schedule 1 that will be cleared or disturbed as a result of the implementation of this proposal.
- 6-4 Prior to the commencement of construction of the proposal, unless otherwise agreed by the CEO, the proponent shall undertake the Intertidal Benthic Primary Producer Habitat Survey Plan required by condition 6-2 and submit the results, including the relevant spatial data for the intertidal benthic primary producer communities required by condition 6-3(2).
- 6-5 Prior to the commencement of construction of the proposal, unless otherwise agreed by the CEO, the proponent shall prepare a Benthic Communities and Habitat Plan which is to be approved by the CEO.
- 6-6 The Benthic Communities and Habitat Plan required by condition 6-5 shall:
- (1) detail the alignment, dimensions and locations of the proposal elements as referred to in Columns 1 and 2 of Schedule 1, within the development envelope shown in Figure 1;
 - (2) provide the surveyed locations and spacing of the causeway culverts, including the rationale to maintain surface water hydrology and minimise indirect impacts to intertidal benthic primary producer communities;
 - (3) detail management measures to ensure that the proposal will not result in indirect impacts to intertidal benthic primary producer communities;
 - (4) detail monitoring protocols and locations directly outside the intertidal benthic primary producer communities identified in condition 6-3(2) to demonstrate that the proposal will not result in indirect impacts beyond the authorised extent in Column 3 of Schedule 1 to intertidal benthic primary producer communities;
 - (5) include indicators and trigger levels for monitoring the health of intertidal benthic primary producer communities; and
 - (6) detail the corrective actions that will be implemented in the event the triggers identified in condition 6-6(5) are not met.
- 6-7 Prior to the commencement of construction of the proposal, unless otherwise agreed by the CEO, the proponent shall implement the approved Benthic Communities and Habitat Plan required by condition 6-5, to the satisfaction of the CEO.
- 6-8 In the event that trigger levels identified in condition 6-6(5) are exceeded, the proponent shall report the findings to the CEO as soon as practicable, but within fourteen (14) days, along with a description of the corrective management actions to be taken.

- 6-9 The proponent shall provide spatial data for the constructed elements of the proposal as set out in Columns 1 and 2 of Schedule 1 to the CEO, within two (2) months of completion of construction.

7 Marine Fauna

- 7-1 The proponent shall ensure that impacts from marine pile driving operations to cetaceans, dugongs and marine turtles are minimised.
- 7-2 Prior to marine pile driving operations and for the duration of the marine pile driving operations, the proponent shall engage dedicated Marine Fauna Observers who must:
- (1) demonstrate a knowledge of marine wildlife species in the Pilbara region, including Threatened and Migratory Species listed under the *Environment Protection and Biodiversity Conservation Act 1999* (EPBC Act), and *Wildlife Conservation (Specially protected fauna) Notice 2010(2)* and priority listing, and their behaviours;
 - (2) have the capacity, subject to safety considerations, to move independently of the proposal implementation activities and make observations and other relevant records independently within 500 metres of the marine pile driving activities;
 - (3) be on duty during all marine pile driving operations; and
 - (4) maintain a log of:
 - (a) observations of cetaceans in a format consistent with the National Cetacean Sightings and Strandings Database;
 - (b) observations of cetaceans, dugongs and marine turtles including injured or dead fauna within 500 metres of the marine pile driving activities referred to in condition 7-2(2);
 - (c) observations of cetaceans, dugongs and marine turtles behaviour, in particular any behaviour that could be interpreted as a display of disturbance or distress;
 - (d) management response by the proponent in relation to observation of disturbed or distressed fauna, and injured or dead fauna; and
 - (e) observation hours in relation to the duration of the marine pile driving activity.
- 7-3 The proponent shall within six (6) months of completing the marine pile driving operations, lodge cetacean records with the National Cetacean Sighting and Strandings Database at the Australian Antarctic Division and with the Department of Environment and Conservation.
- 7-4 The Marine Fauna Observer as required by condition 7-2 is to be present on each vessel undertaking marine pile driving operations, unless otherwise authorised by the CEO, and will be trained in marine fauna observations and mitigation measures, including the requirements of the *Wildlife Conservation (Closed Season Marine Mammals) Notice 1998*, as amended or replaced from

time to time, and maintain a watch and a log of fauna observed during transit and construction activity consisting of: GPS coordinates; species (if known); and behaviour. Logs are to be submitted to the Department of Environment and Conservation on an annual basis at the same time as submitting the compliance assessment report required by condition 4-6 to the CEO.

- 7-5 Subject to condition 7-9, no marine pile driving activities shall commence until the Marine Fauna Observer (or observers) required by condition 7-2 have verified that no cetacean(s) or dugong(s) have been observed within a radius of 1,000 metres or marine turtle(s) within a radius of 300 metres from any marine pile driving operations during the twenty (20) minute period immediately prior to commencement of marine pile driving operations.
- 7-6 Prior to commencement of full power marine pile driving, the proponent shall implement soft start-up procedures that slowly increase the intensity of noise emissions over a period of no less than fifteen (15) minutes.
- 7-7 If the Marine Fauna Observer(s) required by condition 7-2, or any other person, observes a marine turtle enter within 100 metres of marine pile driving operations, or cetacean or dugong within 500 metres of marine pile driving operations, that marine pile driving operation is to be suspended.
- 7-8 Marine pile driving that has been suspended in accordance with condition 7-7 shall not recommence until the cetacean, or dugong has moved beyond 1,000 metres from the suspended marine piling operation or the marine turtle beyond 300 metres of their own accord, or the cetacean, dugong or marine turtle has not been observed within 500 metres of the marine pile driving operations for a period of twenty (20) minutes. Marine pile driving that has been suspended for more than fifteen (15) minutes shall recommence with soft start-up procedures as required by condition 7-6.
- 7-9 Marine pile driving commenced prior to sunset can continue between the hours of sunset and sunrise, unless marine pile driving is suspended for more than 15 minutes.

8 Introduced Marine Pests

- 8-1 The proponent shall manage non-trading vessel activities and immersible equipment activities whilst engaged for the construction, operation, maintenance and decommissioning of the proposal so as to minimise the threat of the introduction of Introduced Marine Pests into and within State of Western Australian waters, and into and out of the Balla Balla Port Area as delineated in Figure 2.
- 8-2 Prior to any non-trading vessels or immersible equipment entering the Balla Balla Port Area as delineated in Figure 2, the proponent shall prepare an Introduced Marine Pest Risk Assessment Procedure to the satisfaction of the CEO in consultation with the Department of Fisheries which includes but is not limited to the following:
 - (1) all factors to be considered in the risk assessment;

- (2) limits for unacceptable risk of introducing an Introduced Marine Pest;
 - (3) a tool for performing Introduced Marine Pest Risk Assessments; and
 - (4) measures to be implemented to reduce risks to an acceptable level, where the risk assessment identifies an unacceptable risk.
- 8-3 The proponent shall ensure that any non-trading vessel or immersible equipment is subject to an Introduced Marine Pest Risk Assessment, prior to entering or demobilising from the Balla Balla Port Area as delineated in Figure 2, in accordance with the Introduced Marine Pest Risk Assessment Procedure approved required by condition 8-2.
- 8-4 The proponent shall ensure that any Introduced Marine Pest Risk Assessment undertaken required by condition 8-3 is recorded and that record is provided to the Department of Fisheries within seven (7) days of the Introduced Marine Pest Risk Assessment being undertaken.
- 8-5 The proponent shall ensure that any non-trading vessel or immersible equipment that poses an unacceptable risk, as defined by the limits identified under condition 8-2(2), of introducing Introduced Marine Pests, as determined by an Introduced Marine Pest Risk Assessment undertaken required by condition 8-3, does not enter the Balla Balla Port Area as delineated in Figure 2.
- 8-6 Prior to any non-trading vessel or immersible equipment entering the Balla Balla Port Area as delineated in Figure 2, the proponent shall prepare an Introduced Marine Pests Monitoring Program to the satisfaction of the CEO in consultation with the Department of Fisheries that:
- (1) is consistent with monitoring design, implementation and reporting standards as set out in the National System for the Prevention and Management of Marine Pest Incursions (National System);
 - (2) includes a minimum monitoring frequency of once per year; and
 - (3) requires opportunistic sampling and analysis of specimens removed during port, vessel and immersible equipment monitoring activities.
- 8-7 The proponent shall implement the approved Introduced Marine Pests Monitoring Program required by condition 8-6, or amended versions approved by the CEO for the life of the proposal, prior to any entry to the Balla Balla Port Area as delineated in Figure 2 by a non-trading vessel or immersible equipment.
- 8-8 The proponent shall provide the results of monitoring undertaken required by condition 8-7 to the CEO and the Department of Fisheries annually.
- 8-9 Prior to any non-trading vessel or immersible equipment entering the Balla Balla Port Area as delineated in Figure 2, the proponent shall prepare an Introduced Marine Pest Management Strategy to the satisfaction of the CEO in consultation with the Department of Fisheries, to prevent wherever practicable, the establishment and proliferation of any Introduced Marine Pest, aiming to control and potentially eradicate that Introduced Marine Pest, and to minimise the risk

of that Introduced Marine Pest being transferred to other locations within Western Australia.

8-10 The proponent shall notify the CEO, Department of Fisheries and any relevant Port Authority:

- (1) within 24 hours following initial detection of a suspected Introduced Marine Pest; and
- (2) within 24 hours following subsequent analysis and confirmation of species identification of the suspected Introduced Marine Pest.

8-11 In the event that any Introduced Marine Pests are suspected or detected, the Proponent shall, in consultation with the Department of Fisheries and the CEO implement the Introduced Marine Pests Management Strategy.

8-12 The proponent is to submit a report detailing the outcomes of any implementation of the Introduced Marine Pests Management Strategy to the Department of Fisheries and the CEO within thirty (30) days of the commencement of the implementation of the Introduced Marine Pests Management Strategy and thereafter as required by the CEO in consultation with the Department of Fisheries.

9 Flora and Vegetation

9-1 The proponent shall ensure that the elements of the proposal in Column 1 of Schedule 2, are located to minimise the adverse impacts from construction on DEC listed Priority Ecological Communities.

9-2 Prior to commencement of any ground disturbing activities or installation of terrestrial infrastructure, unless agreed by the CEO, the proponent shall prepare a Vegetation Management Plan which is to be approved by the CEO.

9-3 The Vegetation Management Plan required by condition 9-2 shall:

- (1) demonstrate the terrestrial infrastructure will be located to:
 - (a) minimise direct and indirect impacts on DEC listed Priority Ecological Communities of good or very good condition; and
- (2) include spatially accurate, rectified and geographically referenced maps showing the location of the terrestrial infrastructure.

9-4 Prior to commencement of any ground disturbing activities or installation of terrestrial infrastructure, the proponent shall implement the approved Vegetation Management Plan.

9-5 Revisions to the Vegetation Management Plan may be approved by the CEO.

[Signed 21 August 2013]

Albert Jacob MLA

MINISTER FOR ENVIRONMENT; HERITAGE

Table 1: Summary of the Proposal

Proposal Title	Balla Balla Export Facilities
Short Description	<p>The proposal is to construct and operate an iron ore export facility at Balla Balla midway between Port Hedland and Karratha, northwest of Whim Creek in the Pilbara region of WA.</p> <p>The following infrastructure to be constructed within the development envelope includes:</p> <p>Marine infrastructure:</p> <ul style="list-style-type: none"> • 2.6 km long trestle jetty • Four barge mooring towers • Navigation markers <p>Terrestrial infrastructure:</p> <ul style="list-style-type: none"> • Stockyard including dewatering filter plant • Corridor from the approved Balla Balla mine-site to the stockyard • Rock causeway from the stockyard to the laydown area <p>Laydown area</p>

Table 2: Location and authorised extent of physical and operational elements

Column 1	Column 2	Column 3
Element	Location	Authorised Extent
Clearing and disturbance	<p>Located within the proposal development envelope as shown in Figure 1.</p> <p>Includes clearing for a slurry pipeline corridor, stockyard and laydown area as shown in Figure 1.</p>	<p>Up to a total of 160 ha within a 515 ha development envelope.</p> <p>Within the sub-tidal zone, clearing and disturbance of up to 0.3 ha of sub-tidal habitat.</p> <p>Within the intertidal zone, clearing and disturbance of to:</p> <ul style="list-style-type: none"> • 2.2 ha mangrove communities; and • 22 ha algal mat communities.
Causeway	Located within the proposal development envelope as shown in Figure 1.	From the stockyard to the laydown area.
Trestle Jetty	Located within the proposal development envelope as shown in Figure 1.	Minimum length of 2.6 km

Table 3: Abbreviations

Abbreviation	Term
ha	hectares
km	kilometres

Figures (attached)

Figure 1 Proposal development envelope

Figure 2 Department of Transport Balla Balla Port Boundary and approved mine-site

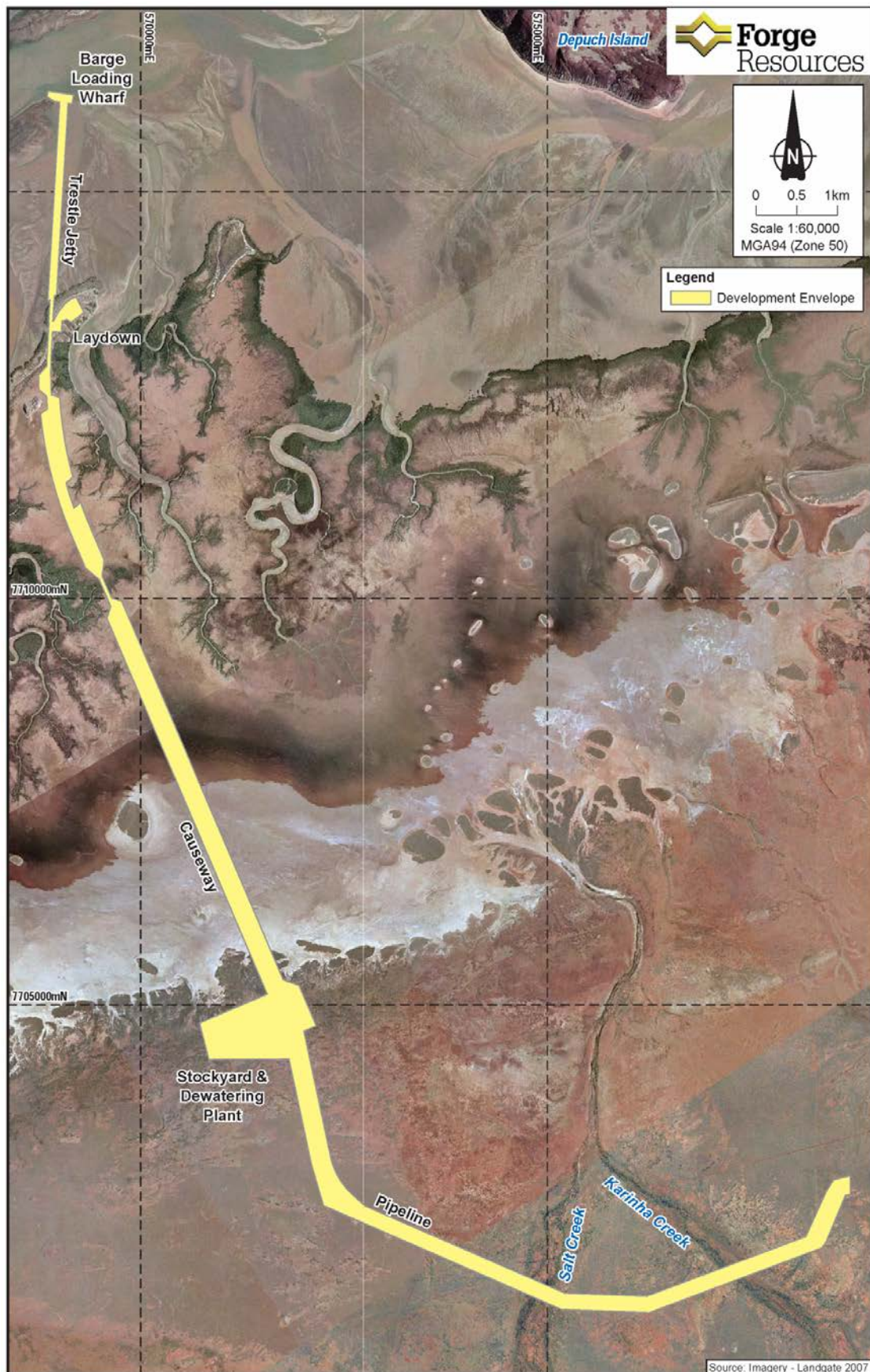


Figure 1 Proposal development envelope

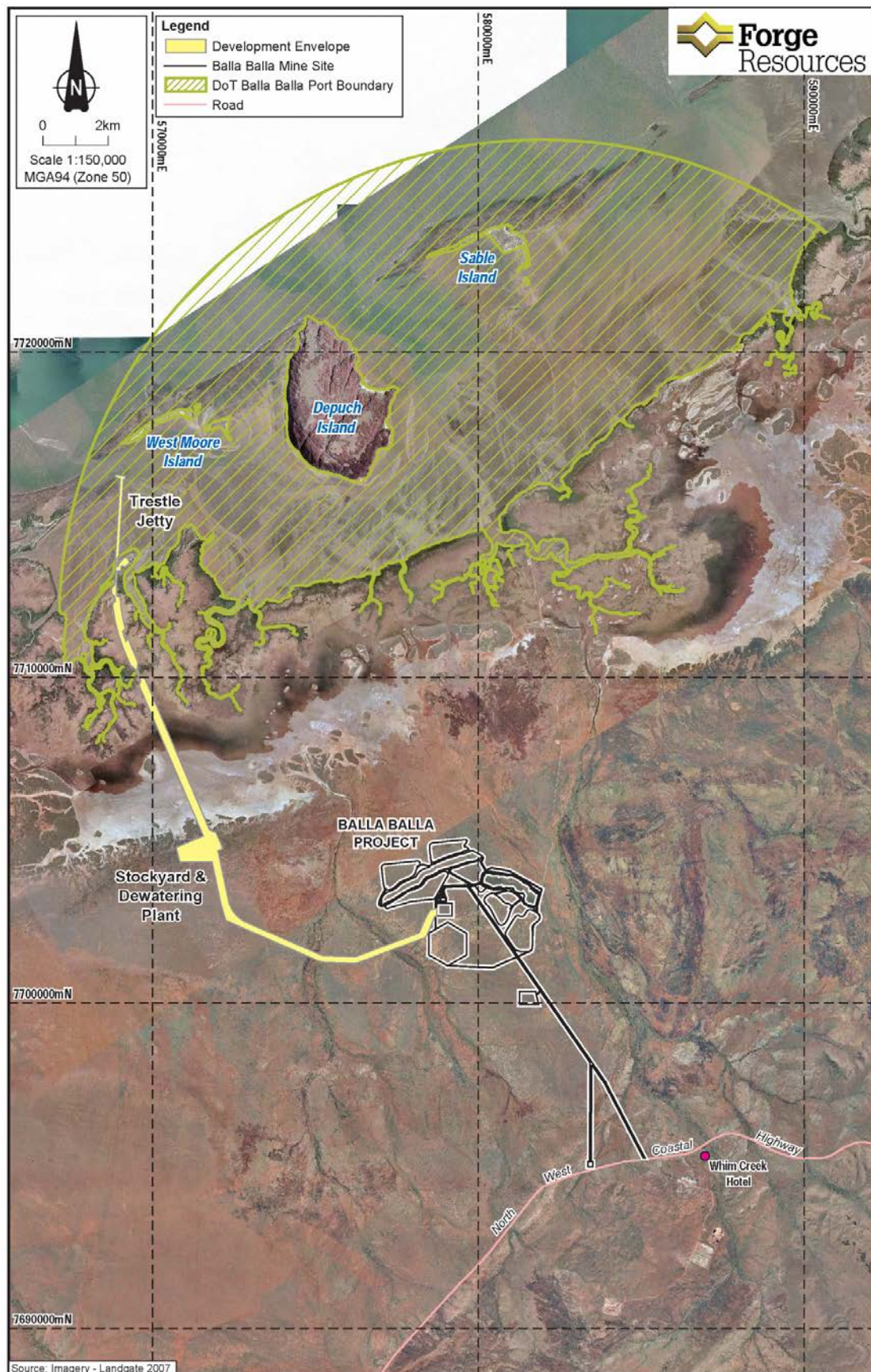


Figure 2 Department of Transport Balla Balla Port Boundary and approved mine-site

Schedule 2

Term or Phrase	Abbreviations and definition
CEO	The Chief Executive Officer of the Department of the Public Service of the State responsible for the administration of section 48 of the <i>Environmental Protection Act 1986</i> , or his delegate.
DEC	Department of Environment and Conservation
EPA	Environmental Protection Authority
EP Act	<i>Environmental Protection Act 1986</i>
Introduced Marine Pests	Any marine species that poses a threat to the Western Australian environment or industry, if introduced, established or translocated. The marine species that are considered to pose a threat as outlined above include those detailed in the Western Australian Prevention List for Introduced Marine Pests, Department of Fisheries (2012), as amended from time to time and other species that appear to have clear impacts or invasive characteristics.
Marine pile driving	Driving structural supports into the ground below the waterline.

Balla Balla Export Facilities

Coodinates defining development envelope Figure 1

Reference "Balla Balla Export Facilities spatial data" submitted to OEPA 10 May 2013.

Notes

The following notes are provided for information and do not form a part of the implementation conditions of the Statement:

- The proponent for the time being nominated by the Minister for Environment under section 38(6) of the *Environmental Protection Act 1986* is responsible for the implementation of the proposal unless and until that nomination has been revoked and another person is nominated.
- If the person nominated by the Minister, ceases to have responsibility for the proposal, that person is required to provide written notice to the Environmental Protection Authority of its intention to relinquish responsibility for the proposal and the name of the person to whom responsibility for the proposal will pass or has passed. The Minister for Environment may revoke a nomination made under section 38(6) of the *Environmental Protection Act 1986* and nominate another person.
- To initiate a change of proponent, the nominated proponent and proposed proponent are required to complete and submit *Post Assessment Form 1 – Application to Change Nominated Proponent*.
- The General Manager of the Office of the Environmental Protection Authority was the Chief Executive Officer of the Department of the Public Service of the State responsible for the administration of section 48 of the *Environmental Protection Act 1986* at the time the Statement was signed by the Minister for Environment.
- Post Assessment Forms and Guidelines may be found at www.epa.wa.gov.au

Attachment 1 to Ministerial Statement 945

Change to proposal approved under section 45C of the *Environmental Protection Act 1986*

This Attachment replaces Schedule 1 of Ministerial Statement 945

Proposal: Balla Balla Export Facilities

Proponent: Forge Resources Swan Pty Ltd

Changes:

- 110 metre extension of the trestle jetty resulting in increasing the development envelope from 515 hectares (ha) to 516 ha;
- Increase clearing and disturbance to the sub-tidal zone from 0.3 ha to 0.4 ha;
- Amendment to the “Short Description”; and
- Inclusion of Table 4 Coordinates defining development envelope.

Table 1: Summary of the Proposal

Proposal Title	Balla Balla Export Facilities
Short Description	<p>The proposal is to construct and operate an iron ore export facility at Balla Balla midway between Port Hedland and Karratha, northwest of Whim Creek in the Pilbara region of WA.</p> <p>The following infrastructure to be constructed within the development envelope includes:</p> <p>Marine infrastructure:</p> <ul style="list-style-type: none">• Trestle Jetty• Barge Loading Wharf <p>Terrestrial infrastructure:</p> <ul style="list-style-type: none">• Stockyard including dewatering filter plant• Corridor from the approved Balla Balla mine-site to the stockyard• Rock causeway from the stockyard to the laydown area• Laydown area

Table 2: Location and authorised extent of physical and operational elements

Column 1	Column 2	Column 3	Column 4
Element	Location	Authorised Extent	Previously Authorised Extent
Clearing and disturbance	<p>Located within the proposal development as shown in Figure 1.</p> <p>Includes clearing for a slurry pipeline corridor, stockyard and laydown area as shown in Figure 1.</p>	<p>Up to total of 160 ha within a 516 ha development envelope.</p> <p>Within the sub-tidal zone, clearing and disturbance of up to 0.4 ha of sub-tidal habitat.</p> <p>Within the intertidal zone, clearing and disturbance of up to:</p> <ul style="list-style-type: none"> • 2.2 ha mangrove communities; and • 22 ha algal mat communities. 	<p>Up to total of 160 ha within a 515 ha development envelope.</p> <p>Within the sub-tidal zone, clearing and disturbance of up to 0.3 ha of sub-tidal habitat.</p> <p>Within the intertidal zone, clearing and disturbance of to:</p> <ul style="list-style-type: none"> • 2.2 ha mangrove communities; and • 22 ha algal mat communities.
Causeway	Located within the proposal development envelope as shown in Figure 1.	From the stockyard to the laydown area.	From the stockyard to the laydown area.
Trestle Jetty	Located within the proposal development envelope as shown in Figure 1.	Minimum length of 2.6 km	Minimum length of 2.6 km

Note: Text in **bold** in Table 2 indicates a change to the proposal.

Table 3: Abbreviations

Abbreviation	Term
ha	hectare
km	kilometre

List of Replacement Figures – Figures 1 and 2 of Schedule 1 are replaced by the following:

Figure 1 Proposal development envelope; and

Figure 2 Balla Balla Port Area Boundary and approved mine-site.

Inclusion of Table 4 – Coordinates defining development envelope

Table 4 – Development envelope – Map Grid of Australia (MGA) Zone 50 coordinates

[Signed: 23 January 2015]

Dr Paul Vogel

CHAIRMAN

Environmental Protection Authority
under delegated authority

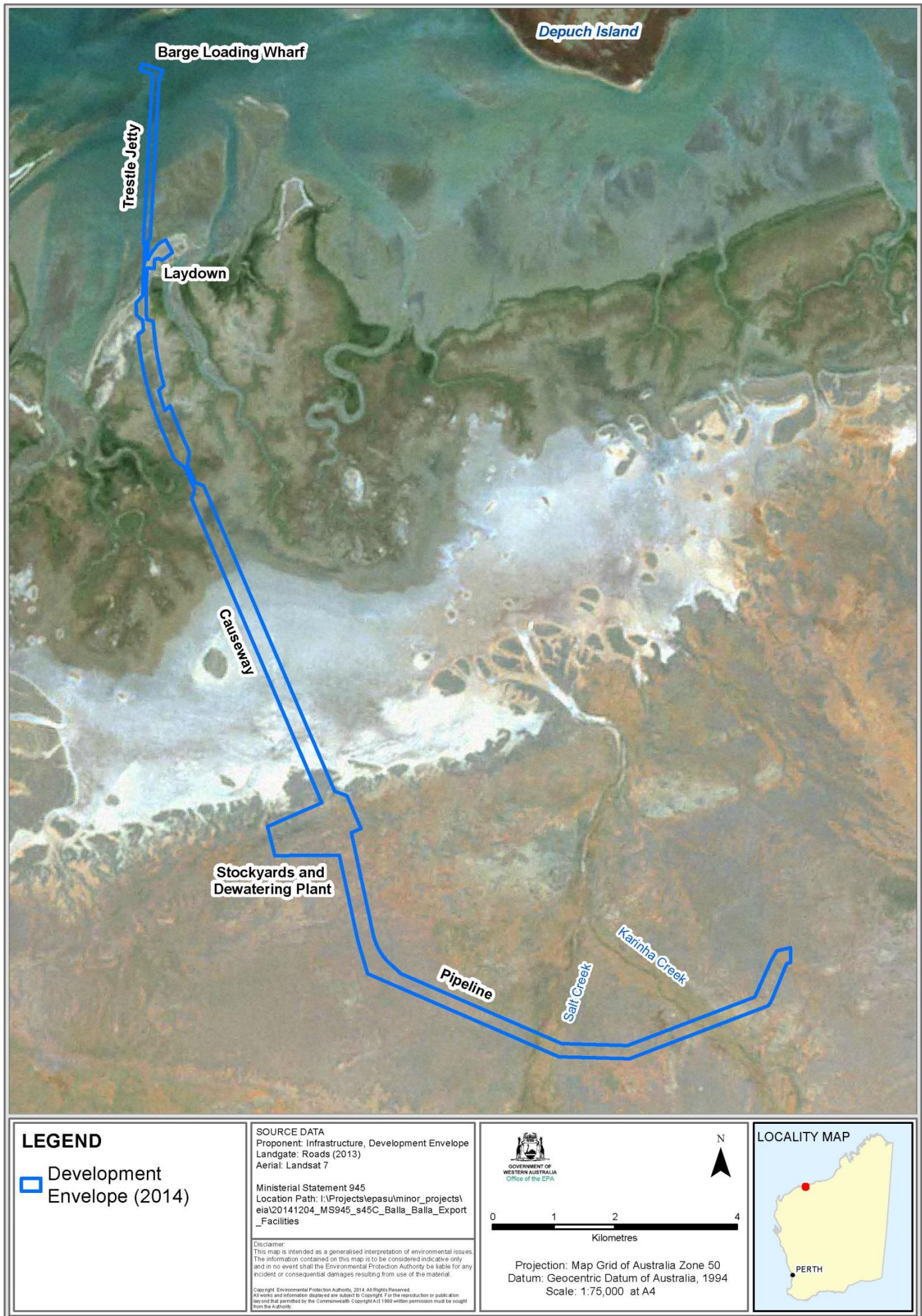


Figure 1: Proposal development envelope

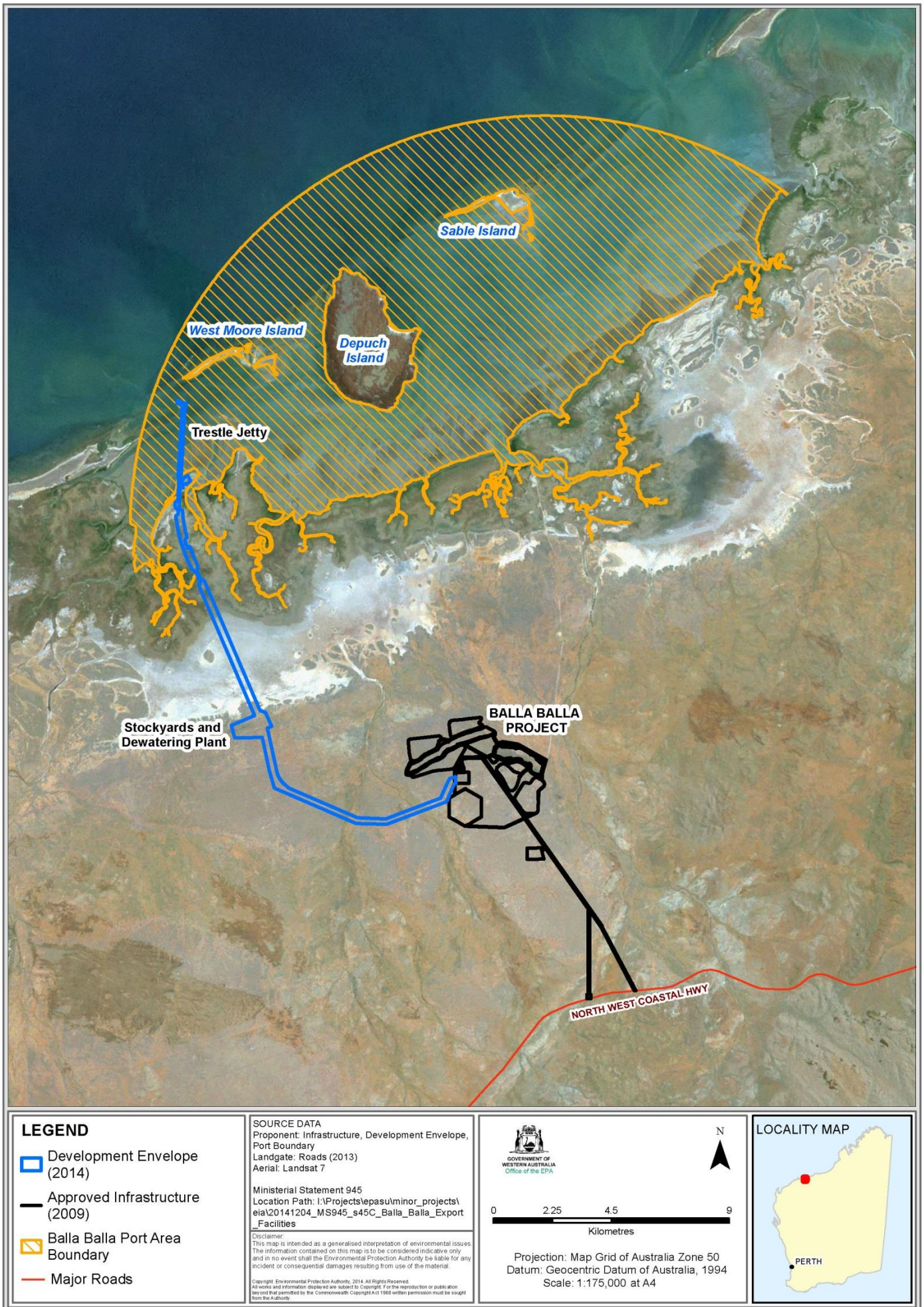


Figure 2: Balla Balla Port Area Boundary and approved mine-site

Table 4 – Coordinates defining development envelope

Development Envelope					
	Easting	Northing		Easting	Northing
1	578661.53	7702658.47	53	569061.54	7710997.56
2	578433.29	7702110.49	54	569054.51	7711016.75
3	578431.73	7702106.81	55	569047.56	7711035.97
4	578429.31	7702101.32	56	569040.68	7711055.22
5	578426.71	7702095.74	57	569033.89	7711074.49
6	578424.02	7702090.21	58	569027.17	7711093.80
7	578421.21	7702084.73	59	569020.52	7711113.13
8	578418.31	7702079.31	60	569013.96	7711132.48
9	578415.31	7702073.93	61	569007.47	7711151.87
10	578412.20	7702068.62	62	569001.06	7711171.27
11	578409.00	7702063.36	63	568994.72	7711190.70
12	578405.70	7702058.17	64	568988.47	7711210.17
13	578402.30	7702053.03	65	568982.28	7711229.64
14	578398.82	7702047.96	66	568976.19	7711249.16
15	578395.23	7702042.96	67	568970.16	7711268.68
16	578391.55	7702038.02	68	568964.22	7711288.24
17	578387.78	7702033.15	69	568958.35	7711307.82
18	578383.92	7702028.37	70	568952.57	7711327.42
19	578370.38	7702012.16	71	568946.86	7711347.05
20	576253.26	7701218.22	72	568941.23	7711366.69
21	575169.98	7701257.75	73	568935.67	7711386.37
22	572246.81	7702533.32	74	568930.20	7711406.06
23	572108.10	7703007.90	75	568924.80	7711425.77
24	572105.39	7703017.48	76	568919.48	7711445.51
25	572102.77	7703027.09	77	568914.25	7711465.26
26	572100.23	7703036.72	78	568909.09	7711485.04
27	572097.77	7703046.37	79	568904.01	7711504.84
28	572095.40	7703056.05	80	568899.00	7711524.66
29	572093.12	7703065.73	81	568894.09	7711544.50
30	572090.92	7703075.45	82	568889.24	7711564.35
31	572088.85	7703084.97	83	568884.48	7711584.23
32	571822.75	7704336.92	84	568879.80	7711604.13
33	570837.29	7704330.85	85	568875.19	7711624.04
34	570724.26	7704777.77	86	568870.66	7711643.97
35	571555.13	7705131.97	87	568866.22	7711663.92
36	569585.66	7709751.79	88	568861.85	7711683.89
37	569631.98	7709898.13	89	568857.57	7711703.88
38	569491.66	7710227.29	90	568853.36	7711723.87
39	569322.00	7710370.28	91	568849.23	7711743.89
40	569155.96	7710759.75	92	568845.19	7711763.92
41	569151.79	7710769.58	93	568841.22	7711783.98
42	569143.87	7710788.36	94	568837.33	7711804.05
43	569136.00	7710807.23	95	568833.53	7711824.12
44	569128.21	7710826.12	96	568829.80	7711844.22
45	569120.50	7710845.05	97	568826.16	7711864.33
46	569112.87	7710864.01	98	568822.59	7711884.46
47	569105.30	7710883.00	99	568819.11	7711904.60
48	569097.82	7710902.02	100	568815.70	7711924.75
49	569090.41	7710921.07	101	568812.38	7711944.92
50	569083.07	7710940.15	102	568809.13	7711965.10
51	569075.82	7710959.26	103	568805.97	7711985.29
52	569068.64	7710978.39	104	568802.89	7712005.49

Development Envelope (continued)					
	Easting	Northing		Easting	Northing
105	568799.89	7712025.71	158	568967.38	7713734.40
106	568796.96	7712045.95	159	568938.80	7713711.20
107	568794.12	7712066.18	160	568920.40	7713404.92
108	568791.36	7712086.44	161	568927.84	7713404.52
109	568788.69	7712106.70	162	568950.20	7713448.46
110	568786.08	7712126.97	163	568990.15	7713519.56
111	568783.57	7712147.26	164	569073.28	7713624.20
112	568781.14	7712167.55	165	569133.91	7713669.18
113	568778.78	7712187.86	166	569202.37	7713706.34
114	568776.51	7712208.16	167	569304.07	7713512.71
115	568774.32	7712228.49	168	569149.55	7713391.44
116	568772.20	7712248.82	169	569088.92	7713423.72
117	568770.37	7712267.16	170	569034.45	7713404.70
118	568855.04	7712328.75	171	569026.62	7713269.27
119	568854.24	7712337.91	172	568917.03	7713275.65
120	568852.56	7712357.91	173	568904.27	7713056.60
121	568850.97	7712377.93	174	568903.15	7713036.69
122	568849.45	7712397.95	175	568902.11	7713016.78
123	568848.02	7712417.98	176	568901.15	7712996.86
124	568846.66	7712438.02	177	568900.26	7712976.94
125	568845.39	7712458.05	178	568899.46	7712957.02
126	568843.76	7712485.28	179	568898.75	7712937.10
127	568749.88	7712563.85	180	568898.10	7712917.16
128	568748.75	7712595.42	181	568897.55	7712897.23
129	568748.10	7712615.85	182	568897.06	7712877.30
130	568747.54	7712636.29	183	568896.67	7712857.36
131	568747.06	7712656.71	184	568896.35	7712837.43
132	568746.65	7712677.15	185	568896.11	7712817.48
133	568746.34	7712697.58	186	568895.94	7712797.54
134	568745.82	7712742.08	187	568895.87	7712777.61
135	568846.62	7712855.11	188	568895.87	7712757.66
136	568846.69	7712859.27	189	568895.94	7712737.73
137	568847.10	7712879.31	190	568896.11	7712717.79
138	568847.59	7712899.33	191	568896.35	7712697.84
139	568848.15	7712919.37	192	568896.66	7712677.91
140	568848.80	7712939.39	193	568897.06	7712657.97
141	568849.53	7712959.43	194	568897.54	7712638.04
142	568850.33	7712979.45	195	568898.10	7712618.11
143	568851.22	7712999.47	196	568898.74	7712598.17
144	568852.18	7713019.49	197	568899.46	7712578.25
145	568853.23	7713039.49	198	568900.26	7712558.32
146	568854.35	7713059.51	199	568901.14	7712538.41
147	568867.11	7713278.55	200	568902.10	7712518.49
148	568874.62	7713407.38	201	568903.12	7712498.78
149	568870.47	7713407.60	202	569005.16	7712465.36
150	568886.15	7713668.43	203	569007.85	7712425.99
151	568857.57	7713645.22	204	569009.26	7712406.49
152	569012.70	7716227.00	205	569010.75	7712387.02
153	568824.38	7716288.18	206	569012.31	7712367.54
154	568855.29	7716383.28	207	569013.96	7712348.07
155	569170.68	7716280.80	208	569015.68	7712328.61
156	569139.77	7716185.70	209	569017.48	7712309.15
157	569115.16	7716193.70	210	569019.36	7712289.71

Development Envelope (continued)					
	Easting	Northing		Easting	Northing
211	569021.31	7712270.26	264	569146.50	7711209.15
212	569023.35	7712250.83	265	569152.79	7711190.23
213	569025.46	7712231.41	266	569159.16	7711171.33
214	569027.64	7712211.99	267	569165.61	7711152.46
215	569029.91	7712192.59	268	569172.12	7711133.61
216	569032.26	7712173.19	269	569181.59	7711106.59
217	569034.69	7712153.80	270	569262.43	7711178.28
218	569037.19	7712134.42	271	569273.02	7711148.05
219	569039.77	7712115.05	272	569279.56	7711129.64
220	569042.42	7712095.70	273	569286.17	7711111.25
221	569045.16	7712076.35	274	569292.85	7711092.89
222	569047.97	7712057.01	275	569299.60	7711074.55
223	569050.86	7712037.69	276	569306.43	7711056.25
224	569053.83	7712018.38	277	569313.34	7711037.97
225	569056.87	7711999.08	278	569320.31	7711019.73
226	569059.99	7711979.79	279	569327.36	7711001.50
227	569063.19	7711960.51	280	569334.48	7710983.30
228	569066.47	7711941.26	281	569341.68	7710965.14
229	569069.82	7711922.00	282	569348.94	7710947.00
230	569073.25	7711902.78	283	569356.28	7710928.89
231	569076.76	7711883.55	284	569363.70	7710910.82
232	569080.34	7711864.34	285	569371.18	7710892.77
233	569084.01	7711845.15	286	569378.74	7710874.74
234	569087.75	7711825.97	287	569385.99	7710857.65
235	569091.56	7711806.81	288	569552.20	7710467.79
236	569095.46	7711787.66	289	569526.59	7710272.84
237	569099.42	7711768.53	290	569640.99	7710004.51
238	569103.47	7711749.42	291	569766.70	7709964.60
239	569107.60	7711730.32	292	571751.73	7705308.31
240	569111.79	7711711.23	293	571946.81	7705237.46
241	569116.07	7711692.17	294	572158.26	7704741.49
242	569120.43	7711673.12	295	572006.13	7704676.63
243	569124.86	7711654.10	296	572333.30	7703137.38
244	569129.36	7711635.08	297	572335.03	7703129.39
245	569133.94	7711616.08	298	572336.79	7703121.63
246	569138.60	7711597.11	299	572338.62	7703113.89
247	569143.33	7711578.15	300	572340.52	7703106.18
248	569148.14	7711559.22	301	572342.48	7703098.48
249	569153.03	7711540.30	302	572344.52	7703090.79
250	569157.99	7711521.40	303	572346.63	7703083.12
251	569163.03	7711502.53	304	572348.81	7703075.47
252	569165.89	7711491.96	305	572351.05	7703067.84
253	569084.33	7711411.91	306	572353.37	7703060.24
254	569087.80	7711399.70	307	572355.74	7703052.66
255	569093.32	7711380.53	308	572358.20	7703045.09
256	569098.92	7711361.40	309	572360.71	7703037.55
257	569104.60	7711342.29	310	572363.30	7703030.03
258	569110.36	7711323.19	311	572365.96	7703022.53
259	569116.20	7711304.13	312	572368.68	7703015.06
260	569122.10	7711285.08	313	572371.47	7703007.63
261	569128.09	7711266.07	314	572374.33	7703000.20
262	569134.15	7711247.07	315	572377.25	7702992.81
263	569140.29	7711228.09	316	572380.24	7702985.44

Development Envelope (continued)					
	Easting	Northing		Easting	Northing
317	572383.30	7702978.10	346	572499.57	7702779.75
318	572386.42	7702970.79	347	572504.47	7702773.49
319	572389.61	7702963.51	348	572509.44	7702767.29
320	572392.86	7702956.26	349	572514.47	7702761.13
321	572396.19	7702949.03	350	572519.55	7702755.01
322	572399.57	7702941.83	351	572524.67	7702748.94
323	572403.02	7702934.67	352	572529.86	7702742.91
324	572406.54	7702927.54	353	572535.11	7702736.93
325	572410.11	7702920.44	354	572540.40	7702731.00
326	572413.76	7702913.38	355	572545.75	7702725.12
327	572417.46	7702906.34	356	572551.15	7702719.28
328	572421.24	7702899.34	357	572556.61	7702713.50
329	572425.06	7702892.37	358	572562.12	7702707.77
330	572428.96	7702885.44	359	572567.68	7702702.08
331	572432.92	7702878.54	360	572573.28	7702696.45
332	572436.95	7702871.68	361	572578.94	7702690.86
333	572441.03	7702864.87	362	572584.65	7702685.33
334	572445.17	7702858.08	363	572590.41	7702679.85
335	572449.37	7702851.33	364	572596.22	7702674.42
336	572453.64	7702844.62	365	572602.08	7702669.05
337	572457.97	7702837.95	366	572758.17	7702528.39
338	572462.35	7702831.32	367	575215.20	7701456.24
339	572466.80	7702824.72	368	576220.53	7701419.55
340	572471.31	7702818.17	369	578175.30	7702152.59
341	572475.87	7702811.67	370	578424.63	7702702.83
342	572480.49	7702805.20	371	578516.20	7702850.05
343	572485.18	7702798.77	372	578721.69	7702899.95
344	572489.91	7702792.39	373	578721.69	7702674.65
345	572494.71	7702786.05	374	578661.53	7702658.47

Attachment 2 to Ministerial Statement 945

Amendment to proposal approved under section 45C of the *Environmental Protection Act 1986*

Proposal: Balla Balla Export Facilities

Proponent: Forge Resources Swan Pty Ltd

Changes:

Change to the limits or extents of the proposal:

- increase in the development envelope of 58 hectares (ha) (from 516 to 574 ha)
- increase of 0.05 ha in the disturbance limit for sub-tidal habitat. In addition, updated bathymetric survey data redefines the lowest astronomical tide line, which has changed the sub-tidal disturbance limit from 0.4 ha to 2.5 ha
- increase of 4.3 ha in the clearing limit for algal mats communities (from 22 to 25.3 ha)
- introduction of a clearing limit for samphire communities of 22 ha, which is an increase of 5.8 ha from the Approved Proposal.


No changes to conditions.

Proposal Title	Balla Balla Export Facilities
Short Description	<p>The proposal is to construct and operate an iron ore export facility at Balla Balla midway between Port Hedland and Karratha, northwest of Whim Creek in the Pilbara region of WA.</p> <p>The following infrastructure to be constructed within the development envelope includes:</p> <p>Marine infrastructure:</p> <ul style="list-style-type: none">• Trestle Jetty• Barge Loading Wharf <p>Terrestrial infrastructure:</p> <ul style="list-style-type: none">• Stockyard including dewatering filter plant• Corridor from the approved Balla Balla mine-site to the stockyard• Rock causeway from the stockyard to the laydown area• Laydown area.

Table 2: Location and authorised extent of physical and operational elements

Column 1	Column 2	Column 3	Column 4
Element	Location	Authorised Extent	Previously Authorised Extent
Clearing and disturbance	<p>Located within the proposal development as shown in Figure 1.</p> <p>Includes clearing for a slurry pipeline corridor, stockyard and laydown area as shown in Figure 1.</p>	<p>Up to total of 160 ha within a 574 ha development envelope.</p> <p>Within the sub-tidal zone, clearing and disturbance of up to 2.5 ha of sub-tidal habitat.</p> <p>Within the intertidal zone, clearing and disturbance of up to:</p> <ul style="list-style-type: none"> • 2.2 ha mangrove communities; • 25.3 ha algal mat communities; and • 22 ha samphire flat communities * <p><small>* Previous assessment included an estimated 16.2 ha samphire flat communities in Development Envelope</small></p>	<p>Up to total of 160 ha within a 516 ha development envelope.</p> <p>Within the sub-tidal zone, clearing and disturbance of up to 0.4 ha of sub-tidal habitat.</p> <p>Within the intertidal zone, clearing and disturbance of up to:</p> <ul style="list-style-type: none"> • 2.2 ha mangrove communities; and • 22 ha algal mat communities.
Causeway	Located within the proposal development envelope as shown in Figure 1.	From the stockyard to the laydown area.	From the stockyard to the laydown area.
Trestle jetty	Located within the proposal development envelope as shown in Figure 1	Minimum length of 2.6 km	Minimum length of 2.6 km

Note: Text in **bold** in Table 2 indicates a change to the proposal.



Professor Matthew Tonts
 CHAIR
 Environmental Protection Authority
 Delegate of the Minister for Environment

Approval date: 1 July 2022

Table 3: Abbreviations

Abbreviation	Term
ha	hectare
km	kilometre
CEO	The Chief Executive Officer of the Department of the Public Service of the State responsible for the administration of section 48 of the <i>Environmental Protection Act 1986</i> , or his delegate.
DEC	The government agency responsible for administering the listing and prioritising species and communities.
EP Act	<i>Environmental Protection Act 1986</i>
Introduced Marine Pests	Any marine species that poses a threat to the Western Australian environment or industry, if introduced, established or translocated. The marine species that are considered to pose a threat as outlined above include those detailed in the Western Australian Prevention List for Introduced Marine Pests, Department of Fisheries (2012), as amended from time to time and other species that appear to have clear impacts or invasive characteristics.
Marine pile driving	Driving structural supports into the ground below the waterline.

Figures (attached)

Figure 1 Proposal development envelope

Figure 2 Department of Transport Balla Balla Port Boundary and approved mine-site



Figure 1 Proposal development envelope



Figure 2 Department of Transport Balla Balla Port Boundary and approved mine-site

Schedule 1

All co-ordinates are in metres, listed in Map Grid of Australia Zone 50 (MGA Zone 50), datum of Geocentric Datum of Australia 1994 (GDA94).

Spatial data depicting the figures are held by the Department of Water and Environmental regulation. Record no. DWERDT547624.