

**THIS DOCUMENT**

This document has been produced by the Office of the Appeals Convenor as an electronic version of the original Statement for the proposal listed below as signed by the Minister and held by this Office. Whilst every effort is made to ensure its accuracy, no warranty is given as to the accuracy or completeness of this document.

The State of Western Australia and its agents and employees disclaim liability, whether in negligence or otherwise, for any loss or damage resulting from reliance on the accuracy or completeness of this document.

Copyright in this document is reserved to the Crown in right of the State of Western Australia.

Reproduction except in accordance with copyright law is prohibited.

Published on: 25 May 2026

Statement No. 1273

**STATEMENT THAT A PROPOSAL MAY BE IMPLEMENTED**  
***(Environmental Protection Act 1986)***

**TELFER-HAVIERON GOLD MINING PROJECT**

**Proposal:**

Greatland Pty Ltd has approval for the recommencement and expansion of mining at the Telfer Gold mine to include the mining and processing of 400 million tonnes of gold ore at a rate of up to 23 million tonnes per annum, and the transport of copper concentrate to Port Hedland by road. The Telfer project also includes a power supply of up to 160 megawatts to the Telfer Gold mine using a 440 km long power supply and infrastructure corridor from Port Hedland.

The Telfer-Havieron Gold Mining Project proposal is for the expansion of the Telfer Gold mine to include the Havieron underground mine, within a development envelope encompassing both the Telfer-Havieron operations and inclusive of haul road for trucking ore from Havieron to Telfer for processing, waste rock landforms, evaporation ponds and expanded ground water abstraction, for a combined total of 32 million tonnes of ore production. The proposal is located about 400 km south-east of Port Hedland in the Great Sandy Desert region of Western Australia, with the Telfer Mine site located 55 km to the west of the Havieron Gold mine.

**Proponent:**

Greatland Pty Ltd  
Australian Company Number 108 498 997

**Proponent address:**

Level 2, 502 Hay Street  
Subiaco, WA, 6008

**Assessment number:** 2446

**Report of the Environmental Protection Authority:** 1806

**Introduction:** The Proposal is a significant amendment to the existing Telfer Gold Mining approved proposal which was agreed to be implemented under Ministerial Statements 605, 606, and 650. The EPA's Reports for the existing Telfer Gold Mining proposal are Report 1058, 1059, and 1127, EPA Assessment Numbers 1444, 1445, and 1518.

Pursuant to section 45 of the *Environmental Protection Act 1986*, it is now agreed that:

1. the significant amendment proposal described and documented in the proponent's Proposal Content Document (5 December 2025), may be implemented;
2. the following Ministerial Statements (MS) for the existing proposal are superseded under section 40AA(6)(b) of the *Environmental Protection Act 1986*:
  - a. MS 605 – Telfer Project, Power Supply and Infrastructure Corridor Port Hedland to Telfer Gold Mine, Great Sandy Desert;
  - b. MS 606 – Telfer Project, Expansion of Telfer Gold Mine, Great Sandy Desert;
  - c. MS 650 – Telfer Project Power Supply and Infrastructure Corridor Port Hedland to Telfer Gold Mine, Great Sandy Desert; and
3. the implementation of the significantly amended proposal (being the existing approved proposal as amended by the significant amendment significant amendment proposal) is subject to the following implementation conditions and procedures.

## **Conditions and procedures**

### **Part A: Proposal extent**

### **Part B: Environmental outcomes, prescriptions and objectives**

### **Part C: Environmental management plans and monitoring**

### **Part D: Compliance and other conditions**

## PART A: PROPOSAL EXTENT

### A1 Limitations and Extent of Proposal

A1-1 The proponent must ensure that the **proposal** is implemented in such a manner that the following limitations or maximum extents / capacities / ranges are not exceeded:

Proposal element	Location	Maximum extent
Physical elements		
<b>Development envelope</b>	Figure 1	No more than 36,647 ha
<b>Disturbance footprint</b>	Within the <b>development envelope</b> shown in Figure 2	<b>Disturbance</b> of no more than 7,516 ha within a 36,647 ha <b>development envelope</b>
Direct <b>disturbance</b> of native vegetation		<b>Clearing</b> of no more than 630 ha of <b>'Excellent' condition native vegetation</b> for the <b>significant amendment</b> within a 36,647 ha <b>development envelope</b>
<b>Critical habitat</b> for the greater bilby ( <i>Macrotis lagotis</i> )		<b>Clearing</b> of no more than 630 ha of <b>critical habitat</b> for the greater bilby ( <i>Macrotis lagotis</i> ) for the <b>significant amendment</b> within a 36,647 ha <b>development envelope</b>
<b>Supporting habitat</b> for the night parrot ( <i>Pezoporus occidentalis</i> )		<b>Clearing</b> of no more than 630 ha of <b>supporting habitat</b> for the night parrot ( <i>Pezoporus occidentalis</i> ) for the <b>significant amendment</b> within a 36,647 ha <b>development envelope</b>
Operational elements		
<b>Groundwater abstraction</b>	N/A	<b>Groundwater abstraction</b> of up to 31.9 GL/a
Timing elements		
Mine life	N/A	Up to 15 years from issue of this Statement

## **PART B – ENVIRONMENTAL OUTCOMES, PRESCRIPTIONS AND OBJECTIVES**

### **B1 Flora and Vegetation**

B1-1 The proponent must ensure the implementation of the **proposal** achieves the following environmental **outcomes**:

- (1) no **detectable** increase in the population of **environmental weeds** within the **flora survey study area** compared to **baseline**.

B1-2 The proponent must implement the **proposal** to meet the following environmental **objective**:

- (1) avoid, and where unavoidable, minimise **adverse impacts** to flora and vegetation within and surrounding the **proposal development envelope** from changes to hydrological regimes, sediment deposition, dust, and altered fire regimes compared to **baseline**.

### **B2 Terrestrial Fauna**

B2-1 The proponent must ensure the implementation of the **proposal** achieves the following environmental **outcomes**:

- (1) no **disturbance** to **critical habitat** for the night parrot (*Pezoporus occidentalis*) including roosting sites;
- (2) no mortality, injury or **disturbance** of **conservation significant fauna** due to **construction activities** and **operations**;
- (3) no **detectable** decrease in the **abundance** of greater bilby in the **greater bilby survey study area** from **baseline** levels, that is sustained for three consecutive years, over the life of the **proposal**; and
- (4) no **detectable** increase in feral animal **abundance** in the **greater bilby survey study area** from **baseline** levels over the life of the **proposal** relative to an established **baseline**.

B2-2 The proponent must ensure implementation of the **proposal** achieves the environmental **objective** of avoiding, and where unavoidable, minimising **adverse impacts** to **conservation significant fauna** from **proposal** related to artificial light.

B2-3 The proponent must:

- (1) install **fauna crossings** that:
  - (a) align with **ecological linkages**;
  - (b) connect areas of **'Excellent' condition native vegetation**; and/or

- (c) connect areas with high **environmental values** as described and recorded in the environmental management plan as required by condition B3;
- (2) ensure the **fauna crossings** required by condition B2-3(1):
    - (a) provide protection from feral predators to achieve the **outcomes** in B2-1;
    - (b) are able to be utilised by a variety of native fauna; and
    - (c) are installed during **construction activities**, with installation completed before works proceed beyond the construction phase; and
  - (3) maintain the **fauna crossings** required by condition B2-3(1) for the life of the **proposal**.

B2-4 Prior to **ground disturbing activities**, the proponent must undertake the following actions:

- (1) within two weeks prior to **clearing** activities, using a licensed **fauna spotter**, undertake **pre-clearance surveys** to detect the presence of night parrot (*Pezoporus occidentalis*), greater bilby (*Macrotis lagotis*) or **conservation significant fauna** within **clearing** areas; and
- (2) where night parrot (*Pezoporus occidentalis*), and greater bilby (*Macrotis lagotis*) or **conservation significant fauna** are identified, **ground disturbing activities** shall not commence in that location until:
  - (a) the finding has been notified to the **CEO** and **DBCA**; and
  - (b) either:
    - (i) the individual (with the exception of the night parrot (*Pezoporus occidentalis*)) has been relocated by a **fauna handler to critical habitat**; or
    - (ii) the individual has been observed by the **fauna spotter** to have moved on from the area to adjoining **critical habitat**; or
    - (iii) the **fauna spotter** considers that the individual no longer occurs in the area to be **cleared**.

B2-5 The proponent must implement the following measures:

- (1) **clearing** activities to be undertaken in **daylight hours**;

- (2) vehicle and machinery speed limits on the **Havieron to Telfer haul road**, excluding **emergency response vehicles**, must not exceed;
  - (a) **80 km/hr** on sealed roads or **60 km/hr** on unsealed roads during **daylight hours**; and
  - (b) **40 km/hr** during **night-time hours** for vehicles other than those undertaking **haulage operations**;
- (3) no **haulage operations** via **Havieron to Telfer haul road** during **night-time hours**;
- (4) no **disturbance**, vehicle movement or **construction activities** within the exclusion buffers specified below, applied to fauna habitat features recorded during **pre-clearance surveys**:
  - (a) **300 m** around **night parrot roosting sites**;
  - (b) **100 m** around **greater bilby occupied burrows**;
  - (c) **150 m** around **great desert skink occupied burrows**; and
  - (d) **300 m** around permanent and **prominent ephemeral water sources** located within **1.5 km** of night parrot nesting sites.
- (5) access to significant fauna buffer zones required by condition B2-5(4) is restricted to authorised personnel only; and

B2-6 The proponent must implement an adaptive management approach to address uncertainty in the potential significance of **proposal**-related impacts to the night parrot, greater bilby and great desert skink and the efficacy of proposed management approaches (including significant fauna avoidance buffers) in mitigating impacts, including:

- (1) **night parrot roosting sites, greater bilby occupied burrows, great desert skink occupied burrows** identified during **pre-clearance surveys** within the indicative **disturbance footprint** must be monitored during and post **clearing** for a minimum of two weeks to determine the efficacy of the **conservation significant fauna** buffer size and other management approaches; and
- (2) if monitoring indicates there has been any instance of **proposal** related **disturbance** to either night parrots, greater bilby or great desert skink, all work within the indicative **disturbance footprint** must stop until such a time as proposed alternative management measures have been approved by the **CEO**.

### **B3 Environmental Management Plan**

- B3-1 The proponent must review and update the *Significant Species Management Plan* (Revision 2, 30 September 2025) that satisfies the requirements of condition C4 and C5 and demonstrates how achievement of the **outcomes** in condition B2-1, the **objective** in condition B1-2, condition B2-2 and condition B4-2, and the prescriptive requirements in condition B2-3, condition B2-4, condition B2-5, and condition B2-6 will be monitored and substantiated and submit it to the **CEO**.
- B3-2 The environmental management plan as required by condition B3-1 must contain adaptive management measures for the night parrot (*Pezoporus occidentalis*), and **conservation significant species** in the event they are identified in the **pre-clearance surveys** as required under condition B2-4.

### **B4 Inland Waters and Subterranean Fauna**

- B4-1 The proponent must ensure the implementation of the **significant amendment** achieves the following environmental **outcomes**:
- (1) groundwater drawdown does not exceed the **predicted drawdown extent** defined in Figure 5; and
  - (2) maintain groundwater levels and quality to support stygofauna habitat beyond the **predicted drawdown extent**.
- B4-2 The proponent must implement the **proposal** to achieve the following environmental **objective**:
- (1) avoid, and where unavoidable, minimise **adverse impacts** to claypans, and fauna habitat from changes to surface water hydrology.

### **B5 Greenhouse Gas Emissions**

- B5-1 The proponent must notify the **CEO** in writing within one (1) month of it becoming aware that implementation of the **proposal** will not be or is not expected to be regulated under the **Safeguard Legislation** as a designated large facility (the notifiable event) and such notice must briefly describe the reasons for and expected duration of the notifiable event.
- B5-2 The proponent must, if requested in writing by the **CEO**, provide the **CEO** with a report on the implications for the **proposal** of any amendment or proposed amendment to the **Safeguard Legislation**, or a decision or proposed decision made under the **Safeguard Legislation** that is specified in the **CEO's** request.
- B5-3 The report required by condition B5-2 must:
- (1) be submitted to the **CEO** within three (3) months of the date of the **CEO's** request or such longer period as the **CEO** agrees in writing; and

- (2) explain the implications that the specified amendment or decision has had or is expected to have on:
  - (a) the obligation to reduce net **Scope 1 greenhouse gas emissions** from implementation of the **proposal** under **Safeguard Legislation**; and
  - (b) the quantity of actual and net **Scope 1 greenhouse gas emissions** likely to result from the future implementation of the **proposal**.

## **B6 Aboriginal Cultural Heritage**

B6-1 The proponent must implement the **proposal** to meet the following environmental **outcomes**:

- (1) no **disturbance** of the **Aboriginal sites** or to **Aboriginal cultural heritage** in the **proposal disturbance footprint** other than where consent is granted for the use of the land under the *Aboriginal Heritage Act 1972*; and
- (2) subject to reasonable health and safety requirements, no interruption of ongoing access to land utilised for traditional use or custom by the **native title party/parties**.

B6-2 The proponent must implement the **proposal** to meet the following environmental **objective**:

- (1) avoid, and where unavoidable, minimise **adverse impacts** to **Aboriginal cultural heritage** within and surrounding the **proposal development envelope**.

B6-3 The proponent must undertake ongoing consultation and engagement with the **native title party/parties** about the achievement of the **outcomes** in condition B1-1, condition B6-1(2), and condition B7-1, and **objectives** in condition B1-2, condition B4-2, and condition B6-2, and prescriptive requirements in condition B7-2, condition B3 and condition B8 for the life of the **proposal**.

## **B7 Rehabilitation and Closure**

B7-1 The proponent must ensure the implementation of the **proposal** achieves the following environmental **outcomes**:

- (1) rehabilitated vegetation and fauna habitat are **self-sustaining**, including not **adversely impacted** by **environmental weeds**;
- (2) rehabilitated areas are consistent with the species diversity and **abundance** of native vegetation relevant to **baseline** conditions;

- (3) rehabilitated landforms are stable and do not cause **pollution** or **environmental harm**;
- (4) the post-mining profile, including rehabilitated landforms, is designed in consideration of visually integrating into the surrounding undisturbed landscape; and
- (5) pre-mining surface water flow regimes are re-established.

B7-2 The proponent must ensure:

- (1) **rehabilitation** includes the preferential use of seeds and propagated material collected from native vegetation within the **proposal disturbance footprint**; and
- (2) closure planning and **rehabilitation** are undertaken in a **progressive manner** consistent with achievement of the **outcomes** in condition B7-1 and prescriptive requirements in condition B7-2(1) and condition B7-2(2) during **operations**; and
- (3) **rehabilitation** of areas **cleared** commences within eighteen (18) months of that area no longer being required.

B7-3 The proponent must include the environmental **outcomes** of condition B7-1 and prescriptive requirements of condition B7-2 in the Mine Development and Closure Proposal and subsequent Mine Closure Plans required under the *Mining Act 1978* and submit for approval to **DMPE**.

## **B8 Environmental Offsets**

B8-1 The proponent must implement offsets to counterbalance the significant residual impacts of the **significant amendment** on the following **environmental values**:

- (1) **supporting habitat** for night parrot (*Pezoporus occidentalis*); and
- (2) **critical habitat** for greater bilby (*Macrotis lagotis*).

B8-2 The proponent must ensure the implementation of offsets achieves the following environmental **outcomes** and **objectives**:

- (1) counterbalance the significant residual impacts to the **environmental values** identified in condition B8-1;
- (2) contribute to the preservation of the species listed in condition B8-1;
- (3) ensure **on-ground management** offsets include **revegetation** and/or **rehabilitation** activities, and incorporate threat abatement measures consistent with the relevant **Recovery and Threat Abatement Plans** to

achieve positive environmental **outcomes** for night parrot and greater bilby;

- (4) ensure **revegetation** provides **self-sustaining habitat** for night parrot and greater bilby;
- (5) deliver a **net-gain** in the quality of **critical habitat** for the night parrot, and greater bilby in the Great Sandy Desert bioregion, through alignment with key recovery actions including:
  - (a) predator and feral pest control;
  - (b) regional surveys which contribute to the understanding of distribution and population structure and patterns of habitat usage; and
  - (c) fire management;
- (6) ensure **on-ground management** takes place within the **Proposed Offset Management Area** as described in the **Offset Environmental Management Plan** required by condition B8-3;
- (7) threat abatement actions commencing, and adequate **baseline** monitoring being completed before construction commences;
- (8) contributes to the long-term post **proposal** viability of the species in the area; and
- (9) consistency with sustainable funded habitat and improvement models which are likely to be maintained beyond the life of the **proposal**.

B8-3 The proponent must review and revise the Havieron Gold Mining Project: Biodiversity Offset Management Strategy (**Offset Environmental Management Plan**) (V3 November 2025) to satisfy the requirements of condition C4 and demonstrate how the environmental **outcomes** and **objectives** in condition B8-2 will be achieved, and how this achievement will be substantiated, and submit it to the **CEO**. The Havieron Gold Mining Project: Biodiversity Offset Management Strategy (**Offset Environmental Management Plan**) must:

- (1) demonstrate that the environmental **outcomes** and **objectives** in condition B8-2 will be met;
- (2) identify an area, or areas, (the **Proposed Offset Management Area**) for **on-ground management** that contains **environmental values** identified in condition B8-1;
- (3) demonstrate how the **environmental values** within the **Proposed Offset Management Area** will be maintained, improved and managed in

order to counterbalance the significant residual impact to the **environmental values** in condition B8-1 and achieve the environmental **outcomes** and **objectives** in condition B8-2;

- (4) demonstrate application of the principles of the WA Environmental Offsets Policy, the WA Environmental Offsets Metric and the WA Offsets Template, as described in the WA Environmental Offsets Guidelines, and the *Environment Protection and Biodiversity Conservation Act 1999* Environmental Offsets Policy Assessment Guide, or any subsequent revisions of these documents;
- (5) identify the proportion of resources allocated for each specific offset addressed by the Havieron Gold Mining Project: Biodiversity Offset Management Strategy (**Offset Environmental Management Plan**);
- (6) identify how the performance of the offset measures, and whether they are achieving the **outcomes** and **objectives** in condition B8-2, will periodically be made publicly available;
- (7) identify how the **Proposed Offset Management Area** will be protected, being either the sites are ceded to the Crown for the purpose of management or conservation, or the sites are managed under other suitable mechanism for the purpose of conservation as agreed by the **CEO** by notice in writing;
- (8) where **on-ground management** is proposed:
  - (a) state the targets for each **environmental value** to be achieved by the **on-ground management**, including completion criteria, which will result in a **tangible improvement** to the **environmental values** listed in condition B8-1;
  - (b) demonstrate the consistency of the targets with the environmental **outcomes** and **objectives** in condition B8-2 and the **objectives** of any relevant guidance, including but not limited to, recovery plans or area management plans;
  - (c) detail the **on-ground management actions**, with associated timeframes for implementation and completion, to achieve the targets identified in condition B8-3(8)(a); and
  - (d) detail the monitoring, reporting and evaluation mechanisms for the targets and actions identified under condition B8-3(8)(a) and condition B8-3(8)(c).

### *Contingency Offset*

- B8-4 If, after receiving the performance review of the offset measures, reporting and evaluation required by condition B8-3(8)(d), the **CEO** determines that the **proposal** has not met the environmental **outcomes** and **objectives** in condition B8-2, and after notifying the proponent in writing, the proponent must undertake additional offsets to counterbalance the significant residual impact from the additional impact to night parrot and greater bilby.
- B8-5 Within twelve (12) months of receiving notice in writing from the **CEO** that an additional offset is required under condition B8-4 the proponent must update the **Offset Environmental Management Plan** required by condition B8-3 to include additional offsets to counterbalance the significant residual impacts to night parrot and greater bilby.

## **PART C – ENVIRONMENTAL MANAGEMENT PLANS AND MONITORING**

### **C1 Environmental Management Plans: Conditions Related to Commencement of Implementation of the Proposal**

C1-1 The proponent must not undertake:

- (1) **ground disturbing activities** associated with the **significant amendment** until the **CEO**, on advice from **DBCA**, has **confirmed** in writing that the environmental management plan required by condition B3-1 meets the requirements of that condition, condition B3-2, conditions C4 and C5.
- (2) **ground disturbing activities** associated with the **significant amendment** until the **CEO**, on advice from **DBCA**, has **confirmed** in writing that the Havieron Gold Mining Project: Biodiversity Offset Management Strategy (**Offset Environmental Management Plan**) required by condition B8-3 meets the requirements of that condition, condition B8-1, condition B8-2, conditions C4 and C5.

### **C2 Environmental Management Plans: Conditions Relating to Approval, Implementation, Review and Publication**

C2-1 Upon being required to implement an environmental management plan under Part B, or after receiving notice in writing from the **CEO** under condition C1-1 that the environmental management plan(s) required in Part B satisfies the relevant requirements, the proponent must:

- (1) implement the most recent version of the **confirmed** environmental management plan; and
- (2) continue to implement the **confirmed** environmental management plan referred to in condition C2-1(1), other than for any period which the **CEO** confirms by notice in writing that it has been demonstrated that the relevant requirements for the environmental management plan have been met, or are able to be met under another statutory decision-making process, in which case the implementation of the environmental management plan is no longer required for that period.

C2-2 The proponent:

- (1) may review and revise a **confirmed** environmental management plan provided it meets the relevant requirements of that environmental management plan, including any consultation that may be required when preparing the environmental management plan;
- (2) must review and revise a **confirmed** environmental management plan and ensure it meets the relevant requirements of that environmental

management plan, including any consultation that may be required when preparing the environmental management plan, as and when directed by the **CEO**; and

- (3) must revise and submit to the **CEO** the **confirmed** environmental management plan if there is a material risk that the **outcomes** or **objectives** it is required to achieve will not be complied with, including but not limited to as a result of a change to the **proposal**.

C2-3 Despite condition C2-1, but subject to conditions C2-4 and C2-5, the proponent may implement minor revisions to an environmental management plan if the revisions will not result in new or increased **adverse impacts** to the environment or result in a risk to the achievement of the limits, **outcomes** or **objectives** which the environmental management plan is required to achieve.

C2-4 If the proponent is to implement minor revisions to an environmental management plan under condition C2-3, the proponent must provide the **CEO** with the following at least twenty (20) business days before it implements the revisions:

- (1) the revised environmental management plan clearly showing the minor revisions;
- (2) an explanation of and justification for the minor revisions; and
- (3) an explanation of why the minor revisions will not result in new or increased **adverse impacts** to the environment or result in a risk to the achievement of the limits, **outcomes** or **objectives** which the environmental management plan is required to achieve.

C2-5 The proponent must cease to implement any revisions which the **CEO** notifies the proponent (at any time) in writing may not be implemented.

C2-6 **Confirmed** environmental management plans, and any revised environmental management plans under condition C2-4(1), must be published on the proponent's website and provided to the **CEO** in electronic form suitable for on-line publication by the Department of Water and Environmental Regulation within twenty (20) business days of being implemented, or being required to be implemented (whichever is earlier).

### **C3 Conditions Related to Monitoring**

C3-1 The proponent must undertake monitoring capable of:

- (1) substantiating whether the **proposal** limitations and extents in Part A are exceeded; and

- (2) **detecting** and substantiating whether the environmental **outcomes** identified in Part B are achieved (excluding any environmental **outcomes** in Part B where an environmental management plan is expressly required to monitor achievement of that **outcome**).

C3-2 The proponent must submit as part of the Compliance Assessment Report required by condition D2, a compliance monitoring report that:

- (1) outlines the monitoring that was undertaken during the implementation of the **proposal**;
- (2) identifies why the monitoring was capable of substantiating whether the **proposal** limitation and extents in Part A are exceeded;
- (3) for any environmental **outcomes** to which condition C3-1(2) applies, identifies why the monitoring was scientifically robust and capable of **detecting** whether the environmental **outcomes** in Part B are met;
- (4) the results of the monitoring;
- (5) reports whether the **proposal** limitations and extents in Part A were exceeded and (for any environmental **outcomes** to which condition C3-1(2) applies) whether the environmental **outcomes** in Part B were achieved, based on analysis of the results of the monitoring; and
- (6) reports any actions taken by the proponent to remediate any potential non-compliance.

#### **C4 Environmental Management Plans: Conditions Relating to Monitoring and Adaptive Management for Outcomes Based Conditions**

C4-1 The environmental management plans required under condition B3-1 must contain provisions which enable the substantiation of whether the relevant **outcomes** of those conditions are met, and must include:

- (1) **threshold criteria** that provide a limit beyond which the environmental **outcomes** are not achieved;
- (2) **trigger criteria** that will provide an early warning that the environmental **outcomes** are not likely to be met;
- (3) monitoring parameters, sites, control/reference sites, methodology, timing and frequencies which will be used to measure **threshold criteria** and **trigger criteria**. Include methodology for determining alternate monitoring sites as a contingency if proposed sites are not suitable in the future;
- (4) **baseline** data;

- (5) data collection and analysis methodologies;
- (6) adaptive management methodology;
- (7) **contingency measures** which will be implemented if **threshold criteria** or **trigger criteria** are not met; and
- (8) reporting requirements.

C4-2 Without limiting condition C3-1, failure to achieve an environmental **outcome**, or the exceedance of a **threshold criteria**, regardless of whether threshold **contingency measures** have been or are being implemented, represents a non-compliance with these conditions.

**C5 Environmental Management Plans: Conditions Related to Management Actions and Targets for Objective Based Conditions**

C5-1 The environmental management plans required under condition B3-1 must contain provisions which enable the achievement of the relevant **objectives** of those conditions and substantiation of whether the **objectives** are reasonably likely to be met, and must include:

- (1) **management actions**;
- (2) **management targets**;
- (3) **contingency measures** if **management targets** are not met; and
- (4) reporting requirements.

C5-2 Without limiting condition C2-1, the failure to achieve an environmental **objective**, or implement a **management action**, regardless of whether **contingency measures** have been or are being implemented, represents a non-compliance with these conditions.

## **PART D – COMPLIANCE, TIME LIMITS, AUDITS AND OTHER CONDITIONS**

### **D1 Non-compliance Reporting**

D1-1 If the proponent becomes aware of a potential non-compliance, the proponent must:

- (1) report this to the **CEO** within seven (7) days;
- (2) implement **contingency measures**;
- (3) investigate the cause;
- (4) investigate environmental impacts;
- (5) advise rectification measures to be implemented;
- (6) advise any other measures to be implemented to ensure no further impact;
- (7) advise timeframe in which contingency, rectification and other measures have and/or will be implemented; and
- (8) provide a report to the **CEO** within twenty-one (21) days of being aware of the potential non-compliance, detailing the measures required in conditions D1-1(1) to D1-1(7) above.

D1-2 Failure to comply with the requirements of a condition, or with the content of an environmental management plan required under a condition, constitutes a non-compliance with these conditions, regardless of whether the **contingency measures**, rectification or other measures in condition D1-1 above have been or are being implemented.

### **D2 Compliance Reporting**

D2-1 The proponent must provide an annual Compliance Assessment Report to the **CEO** for the purpose of determining whether the implementation conditions are being complied with.

D2-2 Unless a different date or frequency is approved by the **CEO**, the first annual Compliance Assessment Report must be submitted within fifteen (15) months of the date of this Statement, and subsequent reports must be submitted annually from that date.

D2-3 Each annual Compliance Assessment Report must be endorsed by the proponent's Chief Executive Officer, or a person approved by proponent's Chief Executive Officer to be delegated to sign on the Chief Executive Officer's behalf.

D2-4 Each annual Compliance Assessment Report must:

- (1) state whether each condition of this Statement has been complied with, including:
  - (a) exceedance of any **proposal** limits and extents;
  - (b) achievement of environmental **outcomes**;
  - (c) achievement of environmental **objectives**;
  - (d) requirements to implement the content of environmental management plans;
  - (e) monitoring requirements;
  - (f) implement **contingency measures**;
  - (g) requirements to implement adaptive management; and
  - (h) reporting requirements;
- (2) include the results of any monitoring (inclusive of any raw data) that has been required under Part C in order to demonstrate that the limits in Part A, and any **outcomes** or any **objectives** are being met;
- (3) provide evidence to substantiate statements of compliance, or details of where there has been a non-compliance;
- (4) include the corrective, remedial and preventative actions taken in response to any potential non-compliance;
- (5) be provided in a form suitable for publication on the proponent's website and online by the Department of Water and Environmental Regulation; and
- (6) be prepared and published consistent with the latest version of the Compliance Assessment Plan required by condition D2-5 which the **CEO** has **confirmed** by notice in writing satisfies the relevant requirements of Part C and Part D.

D2-5 The proponent must prepare a Compliance Assessment Plan which is submitted to the **CEO** at least six (6) months prior to the first Compliance Assessment Report required by condition D2-2, or prior to implementation of the **proposal**, whichever is sooner.

D2-6 The Compliance Assessment Plan must include:

- (1) what, when and how information will be collected and recorded to assess compliance;
- (2) the methods which will be used to assess compliance;

- (3) the methods which will be used to validate the adequacy of the compliance assessment to determine whether the implementation conditions are being complied with;
- (4) the retention of compliance assessments;
- (5) the table of contents of Compliance Assessment Reports, including audit tables; and
- (6) how and when Compliance Assessment Reports will be made publicly available, including being published on the proponent's website within sixty (60) days of being provided to the **CEO**.

### **D3 Contact Details**

D3-1 The proponent must notify the **CEO** of any change of its name, physical address or postal address for the serving of notices or other correspondence within twenty-eight (28) days of such change. Where the proponent is a corporation or an association of persons, whether incorporated or not, the postal address is that of the principal place of business or of the principal office in the State.

### **D4 Time Limit for Proposal Implementation**

D4-1 The **significant amendment** must be substantially commenced within five (5) years from the date of this Statement.

D4-2 The proponent must provide to the **CEO** documentary evidence demonstrating that they have complied with condition D4-1 no later than thirty (30) days after substantial commencement.

D4-3 If the **significant amendment** has not been substantially commenced within the period specified in condition D4-1, implementation of the **proposal** must not be commenced or continued after the expiration of that period.

### **D5 Public Availability of Data**

D5-1 Subject to condition D5-2, within a reasonable time period approved by the **CEO** upon the issue of this Statement and for the remainder of the life of the **proposal**, the proponent must make publicly available, in a manner approved by the **CEO**, all validated environmental data collected before and after the date of this Statement relevant to the **proposal** (including sampling design, sampling methodologies, monitoring and other empirical data and derived information products (e.g. maps)), environmental management plans and reports relevant to the assessment of this **proposal** and implementation of this Statement.

D5-2 If:

- (1) any data referred to in condition D5-1 contains trade secrets; or

- (2) any data referred to in condition D5-1 contains particulars of confidential information (other than trade secrets) that has commercial value to a person that would be, or could reasonably be expected to be, destroyed or diminished if the confidential information were published,

the proponent may submit a request for approval from the **CEO** to not make this data publicly available and the **CEO** may agree to such a request if the **CEO** is satisfied that the data meets the above criteria.

D5-3 In making such a request the proponent must provide the **CEO** with an explanation and reasons why the data should not be made publicly available.

#### **D6 Independent audit**

D6-1 The proponent must arrange for an independent audit of compliance with the conditions of this statement, including achievement of the environmental **outcomes** and/or the environmental **objectives** and/or environmental performance with the conditions of this statement, as and when directed by the **CEO**.

D6-2 The independent audit must be carried out by a person with appropriate qualifications who is nominated or approved by the **CEO** to undertake the audit under condition D6-1.

D6-3 The proponent must submit the independent audit report with the Compliance Assessment Report required by condition D2, or at any time as and when directed in writing by the **CEO**. The audit report is to be supported by credible evidence to substantiate its findings.

D6-4 The independent audit report required by condition D6-1 is to be made publicly available in the same timeframe, manner and form as a Compliance Assessment Report, or as otherwise directed by the **CEO**.

[signed on 25 May 2026]

Hon. Matthew Swinbourn BA LLB MLC  
**MINISTER FOR THE ENVIRONMENT; COMMUNITY SERVICES; HOMELESSNESS**

<b>Key decision-making authorities consulted under section 45(2):</b>
---

Minister for Aboriginal Affairs Minister for Mines and Petroleum Minister for Water
---

**Table 1: Abbreviations and definitions**

Acronym or abbreviation	Definition or term
<b>Aboriginal cultural heritage</b>	Means the tangible and intangible elements that are important to the Aboriginal people of the State, and are recognised through social, spiritual, historical, scientific or aesthetic values, as part of Aboriginal tradition to the extent they directly affect or are affected by physical or biological surroundings. This includes but is not limited to sand dunes, vegetation type 6i containing <i>Eucalyptus victrix</i> , and vegetation type 6b containing <i>Eucalyptus camaldulensis</i> .
<b>Aboriginal site(s)</b>	As defined in section 4 and 5 under the <i>Aboriginal Heritage Act 1972</i> .
<b>Abundance</b>	The total number of individuals of a particular species or group of species in a defined area measuring how common or numerous that species or group of species is.
<b>Adverse impact/ adversely impacted</b>	<p>Negative change that is neither trivial nor negligible that could result in a reduction in health, diversity or <b>abundance</b> of the receptor/s being impacted, or a reduction in <b>environmental value</b>. Adverse impacts can arise from direct or indirect impacts, or other impacts from the <b>proposal</b>.</p> <p>In relation to flora and vegetation, includes but is not limited to, a definable change in spatial coverage or a change in the health, species diversity, structure and plant density of vegetation, vegetation and flora mortality, spread or introduction of <b>environmental weeds</b>, introduction or spread of disease, and edge effects.</p> <p>In relation to terrestrial fauna, includes but is not limited to, habitat fragmentation, vehicle strike, collision with fencing, artificial light and vibration, noise emissions, and predation.</p> <p>In relation to <b>Aboriginal cultural heritage</b>, includes but is not limited to, hydrological change, structural damage, introduction or spread of non-indigenous flora and/or fauna, alteration of fauna behaviour, dust, light, and noise emissions.</p>
<b>Baseline</b>	Initial conditions measured before <b>disturbance</b> associated with the <b>proposal</b> , as captured in the environmental management plan required by condition B3-1, which is used for comparison with data collected during and after <b>disturbance</b> to identify and measure changes in conditions.
<b>CEO</b>	The Chief Executive Officer of the Department of the Public Service of the State responsible for the administration of section 48 of the <i>Environmental Protection Act 1986</i> , or the <b>CEO's</b> delegate.
<b>Cleared/ Clearing</b>	Has the same meaning as in section 51A of the <i>Environmental Protection Act 1986</i> .
<b>CO<sub>2</sub>-e</b>	Carbon dioxide equivalent

Acronym or abbreviation	Definition or term
<b>Confirmed</b>	<p>In relation to a plan required to be made and submitted to the <b>CEO</b>, means, at the relevant time, the plan that the <b>CEO</b> confirmed, by notice in writing, meets the requirements of the relevant condition.</p> <p>In relation to a plan required to be implemented without the need to be first submitted to the <b>CEO</b>, means that plan until it is revised, and then means, at the relevant time, the plan that the <b>CEO</b> confirmed, by notice in writing, meets the requirements of the relevant condition.</p>
<b>Conservation significant fauna</b>	Threatened fauna species listed under the <i>Environment Protection and Biodiversity Conservation Act 1999</i> and <i>Biodiversity Conservation Act 2016</i> , and Priority fauna listed by the <b>DBCA</b> .
<b>Construction activities</b>	Activities that are associated with the substantial implementation of a <b>proposal</b> including but not limited to, earthmoving, vegetation <b>clearing</b> , grading or construction of right of way. Construction activities do not include Geotechnical investigations (including potholing for services and the installation of piezometers) and other preconstruction activities where no <b>clearing</b> of vegetation is required.
<b>Contingency measures</b>	Planned actions for implementation if it is identified that an environmental <b>outcome</b> , environmental <b>objective</b> , <b>threshold criteria</b> , <b>environmental quality standard</b> or <b>management target</b> are likely to be, or are being, exceeded. Contingency measures include changes to <b>operations</b> or reductions in <b>disturbance</b> or <b>adverse impacts</b> to reduce impacts and must be decisive actions that will quickly bring the impact to below any relevant threshold, <b>management target</b> and to ensure that the environmental <b>outcome</b> and/or <b>objective</b> can be met.
<b>Critical habitat</b>	<p>For the greater bilby, as recorded in Greatland’s Revised Referral Supporting Document (rev9 December 2025) (claypan, saltpan, sand dune, sandplain, stony hill/breakaway and stony plain).</p> <p>For the night parrot, as recorded and described in NRM Adaptive’s Review of Greatland Pty Ltd’s Havieron Project Night Parrot Habitat Assessment (NRM Adaptive October 2025) (Appendix zHH of the revised referral supporting document rev9). Spatial data held as identified in Schedule 1.</p>
<b>Daylight hours</b>	The period between sunrise and sunset, as specified on the Australian Government Bureau of Meteorology weather station at Telfer (station number SITE 13030).
<b>DBCA</b>	The government agency responsible for the administration of the <i>Biodiversity Conservation Act 2016</i> , which at the time of publication of this Ministerial Statement is the Department of Biodiversity, Conservation and Attractions.

Acronym or abbreviation	Definition or term
<b>DCCEEW</b>	Department of Climate Change, Energy, the Environment and Water
<b>Detecting/ Detectable</b>	The smallest statistically discernible effect size that can be achieved with a monitoring strategy designed to achieve a statistical power value of at least 0.8 or an alternative value as determined by the <b>CEO</b> .
<b>Development envelope</b>	The maximum area within which the <b>proposal</b> will be located, and consistent with the Proposal Content Document for the <b>proposal</b> as referred to in the Introduction of this Statement, as depicted in Figure 1, and as defined by geographic coordinates in Schedule 1.
<b>Disturbance footprint</b>	The location within which the physical <b>proposal</b> elements will occur.
<b>Disturb/ Disturbance</b>	<p>Means directly has or materially contributes to the disturbance effect on health, diversity or <b>abundance</b> of the receptor/s being impacted or on an <b>environmental value</b>.</p> <p>In relation to flora, vegetation or fauna habitat, includes to result in the death, destruction, removal, severing or doing substantial damage to its detriment.</p> <p>In relation to fauna, includes to have the effect of altering the natural behaviour of fauna to its detriment.</p> <p>In relation to inland waters, includes to have the effect of altering hydrological regimes or water quality to the detriment of the <b>environmental values</b> supported by or dependent on surface water and/or groundwater.</p> <p>In relation to <b>Aboriginal cultural heritage</b>, includes direct physical or biological effects on the tangible and intangible elements that are important to Aboriginal people, and are recognised through social, spiritual, historical, scientific or aesthetic values, as part of Aboriginal tradition.</p>
<b>DMPE</b>	The Department of Mines, Petroleum and Exploration
<b>Ecological linkages</b>	Ecological linkages are a series (both contiguous and non-contiguous) of patches of native vegetation which, by virtue of their proximity to each other, act as habitat stepping stones that help maintain ecological processes. Ecological linkages support the movement of organisms within and across a landscape and enable them to access refugia during seasonal and climatic variability.
<b>Emergency response vehicles</b>	Vehicles responding to an emergency, as defined by section 5 of the <i>Emergency Management Act 2005</i> .
<b>Environmental harm</b>	Has the meaning provided by section 3A(2) of the <i>Environmental Protection Act 1986</i> .

Acronym or abbreviation	Definition or term
<b>Environmental value(s)</b>	A beneficial use, or ecosystem health condition.
<b>Environmental weeds</b>	Any plant species that is declared under section 22(2) of the <i>Biosecurity and Agriculture Management Act 2007</i> or any plant listed on the Weeds of National Significance List.
<b>‘Excellent’ condition native vegetation</b>	Means the condition of native vegetation rated in accordance with the <i>Technical guidance – Flora and vegetation surveys for environmental impact assessment</i> , Environmental Protection Authority, December 2016 including any revision to this technical guidance.
<b>Fauna crossing(s)</b>	Infrastructure to reduce fauna vehicle strike and facilitate fauna movement including, but not be limited to, fauna overpasses, fauna underpasses (which must contain furniture for ground-dwelling fauna), dual-use culverts (that is for fauna and drainage) and fencing to facilitate access to the fauna crossing structure.
<b>Fauna handler</b>	A person who is qualified and has attained the appropriate licence/s and authorisation/s under section 40 of the <i>Biodiversity Conservation Act 2016</i> and the Biodiversity Conservation Regulations 2018.
<b>Fauna spotter</b>	A person who is suitably trained in species identification, who does not perform any handling of animals where a licence to do so is required.
<b>Flora survey study area</b>	As depicted in Figure 3, and as defined by geographic coordinates in Schedule 1.
<b>GL/a</b>	Gigalitres(s) per annum
<b>Greater bilby occupied burrows</b>	As outlined in the conservation and management of the bilby ( <i>Macrotis lagotis</i> ) in the Pilbara (Department of Biodiversity, Conservation and Attractions, 2018) or any subsequent revisions.
<b>Greater bilby survey study area</b>	As depicted in Figure 4, and as defined by geographic coordinates in Schedule 1.
<b>Great desert skink occupied burrows</b>	As identified and recorded during <b>pre-clearance surveys</b> .
<b>Greenhouse gas or GHG</b>	Has the meaning given by Section 7A of the <i>National Greenhouse and Energy Reporting Act 2007</i> (Cth) or, if that definition is amended or repealed, the meaning set out in an Act, regulation or instrument concerning greenhouse gases as specified by the Minister.
<b>Greenhouse gas emissions</b>	<b>Greenhouse gas emissions</b> expressed in tonnes of carbon dioxide equivalent ( <b>CO<sub>2</sub>-e</b> ) as calculated in accordance with the definition of 'carbon dioxide equivalence' in Section 7 of the <i>National Greenhouse and Energy Reporting Act 2007</i> (Cth), or, if that definition is amended or repealed, the meaning set out in an

Acronym or abbreviation	Definition or term
	Act, regulation or instrument concerning greenhouse gases as specified by the Minister.
<b>Ground disturbing activities</b>	Any activity or activities undertaken in the implementation of the <b>proposal</b> , including any <b>clearing</b> , civil works or construction from the issue of this Ministerial Statement.
<b>Groundwater abstraction</b>	The process of taking water from a ground source.
ha	Hectare(s).
<b>Haulage operations</b>	The operation of haul trucks and other trucks on the <b>Havieron to Telfer haul road</b> , including loaded and unloaded movements directly associated with the <b>proposal</b> .
<b>Havieron to Telfer haul road</b>	The ~55 <b>km</b> haul road (and infrastructure corridor) between the Havieron and Telfer sites, as depicted in Figure 2 and defined by geographic coordinates in Schedule 1.
km	Kilometre(s).
km/hr	Kilometre(s) per hour.
m	Metre(s).
<b>Management action(s)</b>	The identified actions implemented with the intent of achieving the environmental <b>objective</b> .
<b>Management target(s)</b>	A type of indicator to evaluate whether an environmental <b>objective</b> is being achieved.
<b>Native title party/parties</b>	As defined in section 18(1AA) under the <i>Aboriginal Heritage Act 1972</i> .
<b>Net-gain</b>	The extent of the environmental benefit associated with the offset must exceed the extent of the significant residual impact, allowing for natural background variation, seasonal changes, or other factors outside the control of the proponent and as agreed to by the <b>CEO</b> in writing.
<b>Night parrot roosting sites</b>	As described in Guidelines for determining the likely presence and habitat usage of night parrot ( <i>Pezoporus occidentalis</i> ) in Western Australia (Department of Conservation and Attractions 2018) or any subsequent revisions, and identified and recorded during <b>pre-clearance surveys</b> .
<b>Night-time hours</b>	Means any time between 30 minutes prior to sunset and 30 minutes after sunrise, as specified on the Australian Government Bureau of Meteorology weather station at Telfer (station number SITE 13030).
<b>Objective(s)</b>	An objective is the proposal-specific desired state for an environmental factor/s to be achieved from the implementation of <b>management actions</b> .

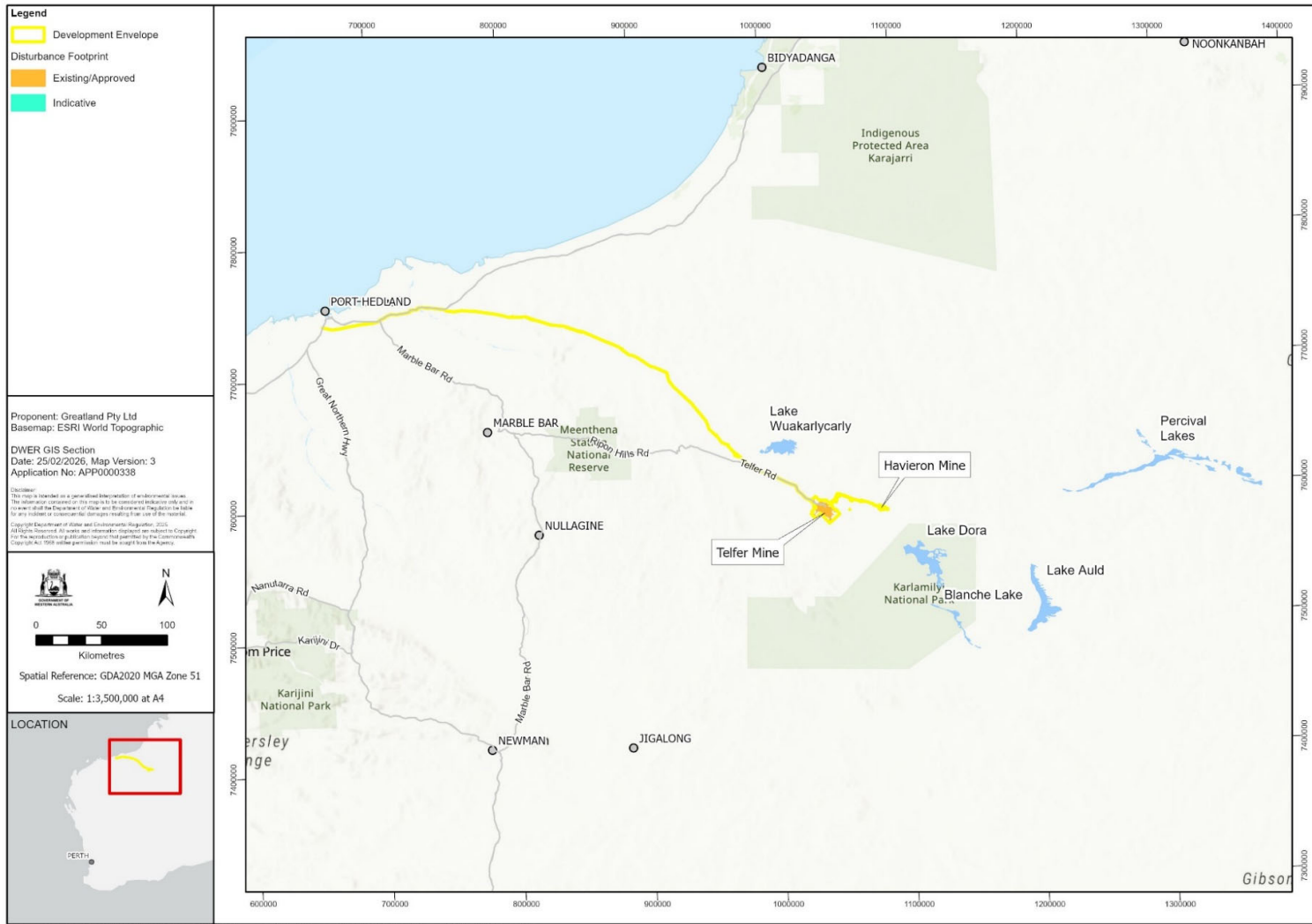
Acronym or abbreviation	Definition or term
<b>Offset Environmental Management Plan</b>	Biodiversity Offset Management Strategy: Havieron Gold Mine (V3, November 2025) or any subsequent revisions.
<b>Offset Management Area</b>	As described in Biodiversity Offset Management Strategy: Havieron Gold Mine (V3, November 2025) or any subsequent revisions.
<b>On-ground management</b>	This includes threat abatement actions such as feral animal control and fire management, revegetation (re-establishment of native vegetation in degraded areas) and <b>rehabilitation</b> (repair of ecosystem processes and management of weeds, disease, or feral animals) with the <b>objective</b> to achieve a <b>tangible improvement</b> to the <b>environmental values</b> in the <b>Proposed Offset Management Area</b> .
<b>Operations</b>	Operation of the plant infrastructure for the <b>proposal</b> and includes pre-commissioning, commissioning, start-up and operation of the plant infrastructure for the <b>proposal</b> .
<b>Outcome(s)</b>	A proposal-specific result to be achieved when implementing the <b>Proposal</b> .
<b>Pollution</b>	Has the meaning provided by section 3A(1) of the <i>Environmental Protection Act 1986</i> .
<b>Pre-clearance survey(s)</b>	Surveys designed to identify the presence or evidence of threatened fauna listed under the <i>Biodiversity Conservation Act 2016</i> prior to <b>ground disturbing activities</b> , undertaken by a suitably qualified specialist, in alignment with relevant <b>EPA technical guidance</b> , Commonwealth guidance and/or <b>DBCA</b> guidance. OR in alignment with relevant <b>EPA technical guidance</b> , and <b>DBCA</b> guidelines for surveys for threatened fauna, including but not limited to night parrot ( <b>DBCA 2024</b> ) and bilby ( <b>DBCA 2017</b> ) or any subsequent revisions of these guidance and guidelines.
<b>Predicted drawdown extent</b>	The modelled groundwater drawdown extent, as defined by the 2 m contour after 12 years of mining and, as depicted in Figure 5 and defined by the geographic coordinates in Schedule 1.
<b>Progressive manner</b>	In relation to <b>rehabilitation</b> , the staged treatment of <b>disturbed</b> areas during exploration, <b>construction</b> , development and <b>operations</b> as soon as these areas become available.
<b>Prominent ephemeral water sources</b>	Well-defined landscape features, such as ephemeral watercourses, drainage lines, or depressions, that intermittently hold or convey surface water following rainfall.
<b>Proposal</b>	The proposal is the entire <b>proposal</b> , which includes the existing approved proposal (Telfer mine, Telfer power supply and

Acronym or abbreviation	Definition or term
	Infrastructure corridor), plus the expansion (Havieron Stage 1 and Stage2).
<b>Proposal GHG emissions</b>	Scope 1 <b>GHG emissions</b> expressed in tonnes of carbon dioxide equivalent ( <b>CO<sub>2-e</sub></b> ) released to the atmosphere as a direct result of an activity or series of activities that comprise/s or form/s part of the <b>proposal</b> , calculated in accordance with: (a) the <i>National Greenhouse and Energy Reporting Act 2007</i> (Cth) and its subsidiary legislation; or (b) if that Act or the relevant subsidiary legislation is amended or repealed such that it does not provide a mechanism for calculating the Proposal Emissions, any other Act, regulation or instrument concerning greenhouse gases as specified by the <b>CEO</b> .
<b>Recovery and Threat Abatement Plans</b>	Recovery Plan for the Greater Bilby ( <i>Macrotis lagotis</i> ) (Department of Climate Change, Energy, the Environment and Water 2023), Threat abatement plan for predation by the European red fox (Department of Climate Change, Energy, the Environment and Water 2008), Threat abatement plan for predation by feral cats (Department of Climate Change, Energy, the Environment and Water 2024), Threat abatement plan to reduce the impacts on northern Australia’s biodiversity by the five listed grasses (Department of Climate Change, Energy, the Environment and Water 2012),The Threatened Species Action Plan 2022-2032 (Department of Climate Change, Energy, the Environment and Water 2022) or any subsequent revisions of these plans.
<b>Rehabilitation</b>	A process of ecosystem repair which aims to maximise the return of biodiversity to disturbed land by reinstating <b>self-sustaining</b> and functional ecosystems based on local species and management of weeds, disease and feral animals.
<b>Safeguard Legislation</b>	The Commonwealth <i>National Greenhouse and Energy Reporting Act 2007</i> and associated <i>National Greenhouse and Energy Reporting (Safeguard Mechanism) Rule 2015</i> .
<b>Scope 1 emissions/ Scope 1</b>	Scope 1 emissions of <b>greenhouse gas</b> , in relation to a facility, means the release of <b>greenhouse gas</b> into the atmosphere as a direct result of one or more activities, which are part of the <b>significant amendment proposal</b> , that generate <b>greenhouse gas emissions</b> .
<b>Self-sustaining</b>	Refers to vegetation or fauna habitat that can survive (continue indefinitely) without ongoing <b>management actions</b> such as watering, weed control or infill planting.
<b>Significant amendment</b>	Is the expansion of the approved <b>proposal</b> as described and documented in Table 2 of the proponents Proposal Content Document dated 5 December 2025.

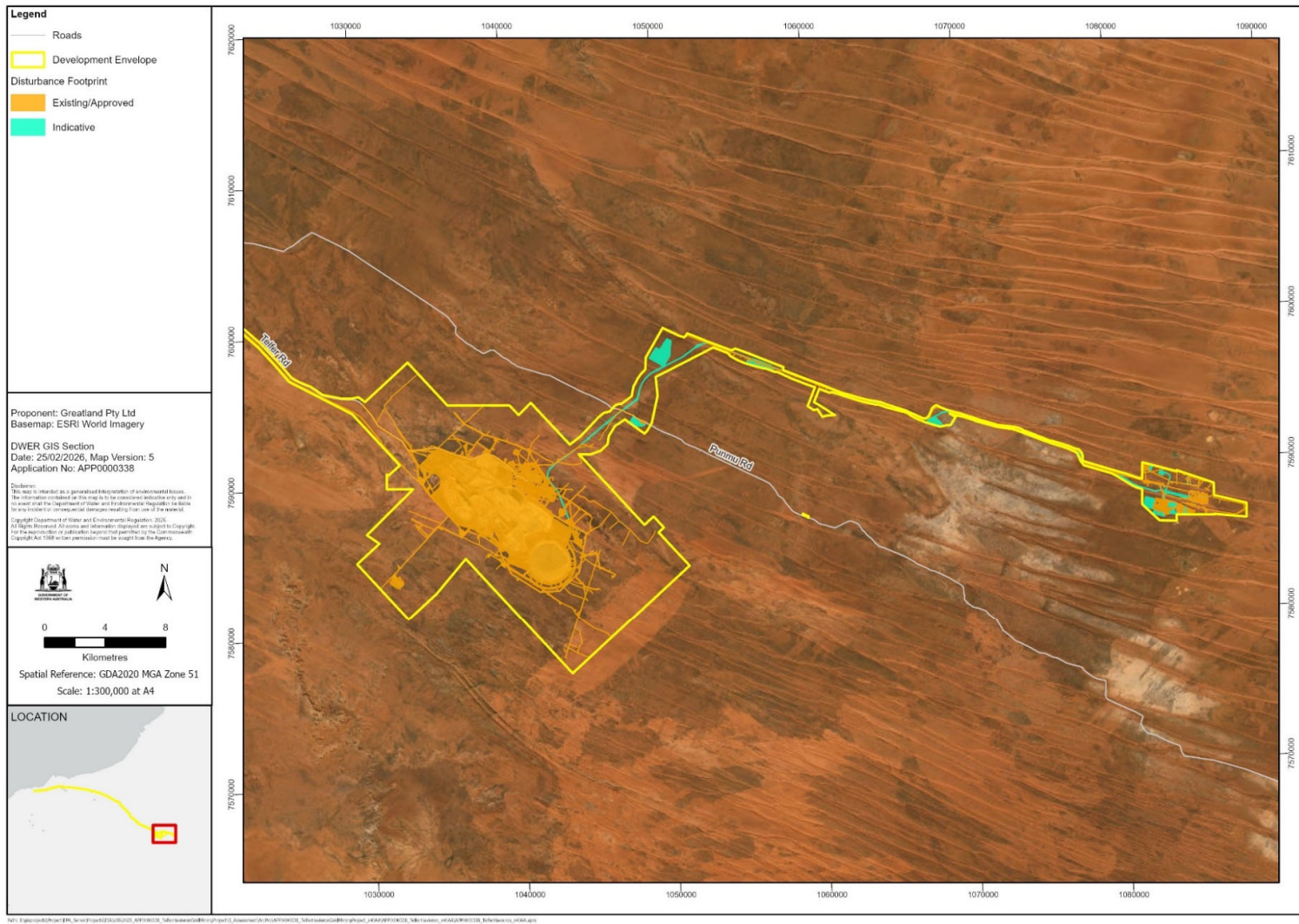
Acronym or abbreviation	Definition or term
<b>Supporting habitat</b>	For the night parrot, as recorded in Greatland's Revised Referral Supporting Document (rev9 December 2025) (claypan, saltpan, sand dune, sandplain, stony hill/breakaway and stony plain).
<b>Tangible improvement</b>	A perceptible, measurable and definable improvement that provides additional ecological benefit and/or value.
<b>Threshold criteria</b>	The indicators that have been selected to represent limits of impact beyond which the environmental <b>outcome</b> is not being met.
<b>Trigger criteria</b>	Indicators that have been selected for monitoring to provide a warning that, if exceeded, the environmental <b>outcome</b> may not be achieved. They are intended to forewarn of the approach of the <b>threshold criteria</b> and trigger response actions.
<b>Waste rock landforms</b>	Landform that consists of rocks removed in the mining process to provide access to the ore.

#### Figures (attached)

- Figure 1 Telfer – Havieron Gold Mining Project development envelope (This map is a representation of the co-ordinates referenced in Schedule 1)
- Figure 2 Telfer – Havieron Gold Mining Project development envelope and disturbance footprint (This map is a representation of the co-ordinates referenced in Schedule 1)
- Figure 3 Telfer – Havieron Gold Mining Project Flora survey study area (This map is a representation of the co-ordinates referenced in Schedule 1)
- Figure 4 Telfer – Havieron Gold Mining Project Greater bilby survey study area (This map is a representation of the co-ordinates referenced in Schedule 1)
- Figure 5 Telfer – Havieron Gold Mining Project Predicted drawdown extent (This map is a representation of the co-ordinates referenced in Schedule 1)



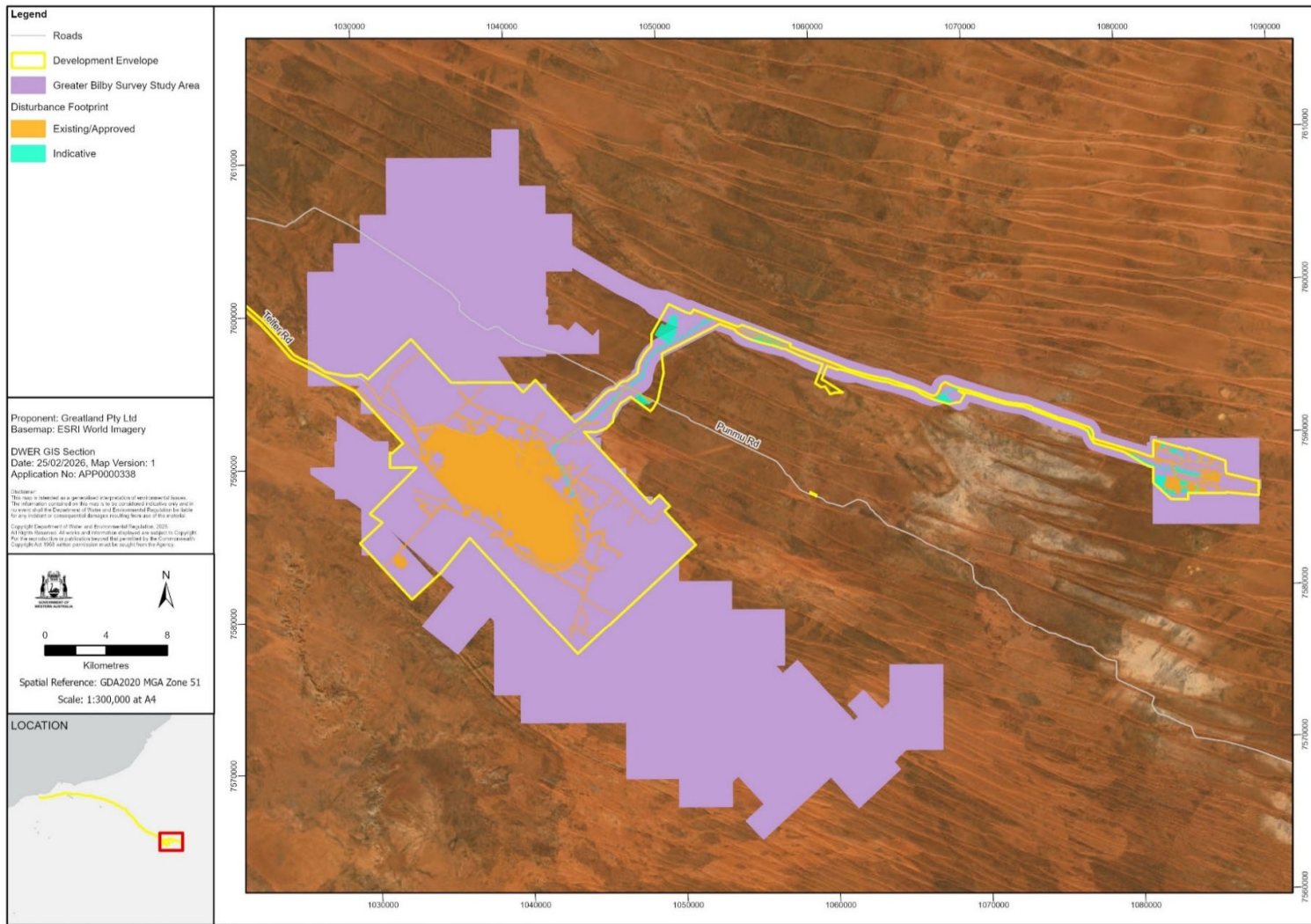
**Figure 1 : Telfer – Havieron Gold Mining Project - development envelope**



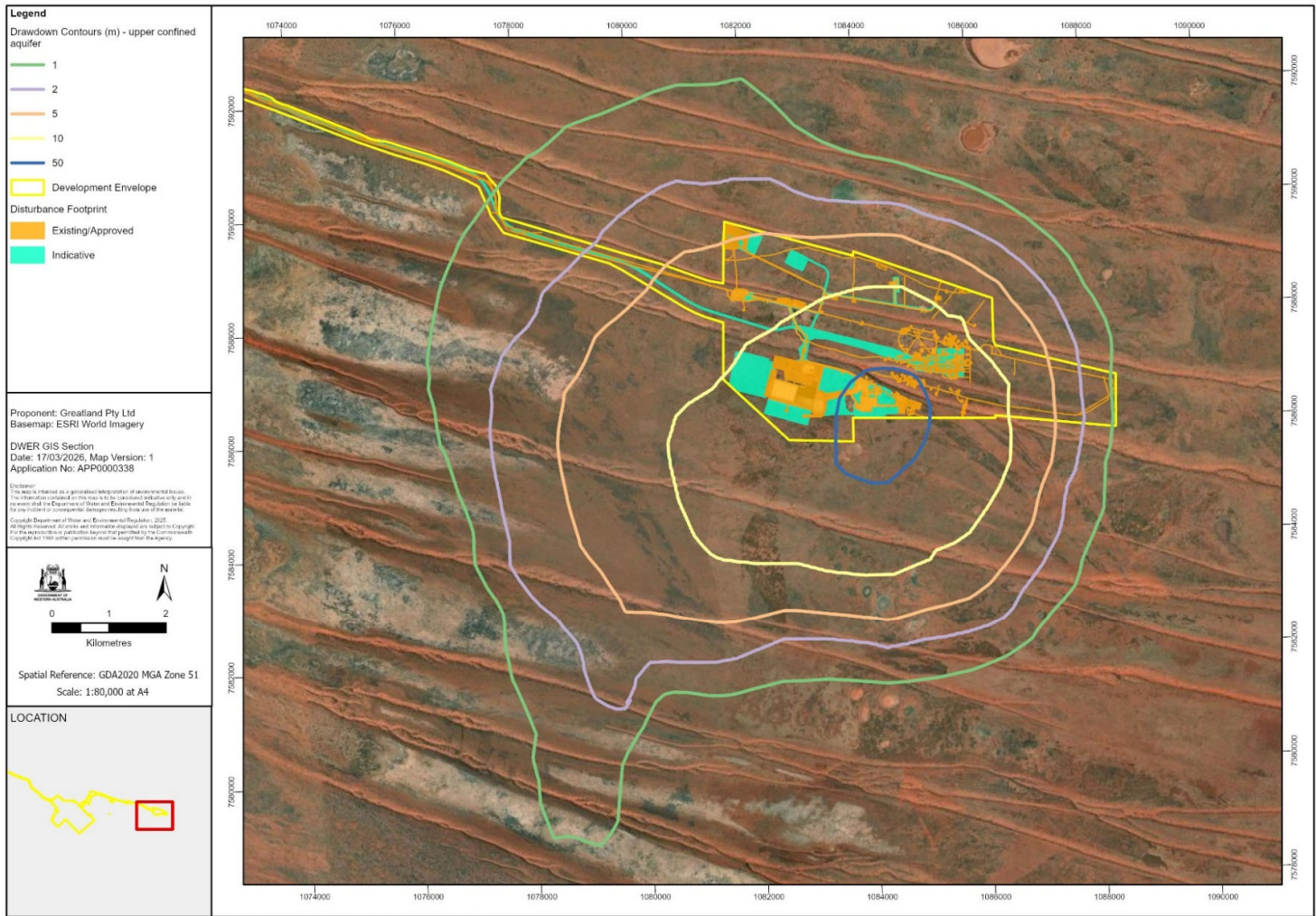
**Figure 2 : Telfer – Havieron Gold Mining Project - development envelope and disturbance footprint**



**Figure 3 : Telfer – Havieron Gold Mining Project – Flora survey study area**



**Figure 4 : Telfer – Havieron Gold Mining Project – Greater bilby survey study area**



**Figure 5 : Havieron Predicted drawdown extent – upper confined aquifer**

## **Schedule 1**

All co-ordinates are in metres, listed in Map Grid of Australia Zone 51 (MGA Zone 51), datum of Geocentric Datum of Australia 2020 (GDA20).

Spatial data depicting the figures are held by the Department of Water and Environmental Regulation. Record no. APP-0000338.