

THIS DOCUMENT

This document has been produced by the Office of the Appeals Convenor as an electronic version of the original Statement for the proposal listed below as signed by the Minister and held by this Office. Whilst every effort is made to ensure its accuracy, no warranty is given as to the accuracy or completeness of this document.

The State of Western Australia and its agents and employees disclaim liability, whether in negligence or otherwise, for any loss or damage resulting from reliance on the accuracy or completeness of this document.

Copyright in this document is reserved to the Crown in right of the State of Western Australia.

Reproduction except in accordance with copyright law is prohibited.

Published on: 1 February 2022

Statement No. 1183

STATEMENT THAT A PROPOSAL MAY BE IMPLEMENTED
(*Environmental Protection Act 1986*)

BYFORD RAIL EXTENSION

Proposal: The proposal is to construct and operate an 8 kilometre new railway, including dual tracks and associated rail infrastructure, between Armadale and Byford. The proposal includes modification to the existing Armadale station, construction a new Byford station, replacement of a number of existing at-grade line crossings (level crossings) with grade separated crossings, either road over rail or rail over road.

Proponent: Public Transport Authority of Western Australia
Australian Business Number 61 850 109 576

Proponent Address: Public Transport Centre, West Parade
PERTH WA 6000

Assessment Number: 2261

Report of the Environmental Protection Authority: 1710

Pursuant to section 45 of the *Environmental Protection Act 1986*, it has been agreed that the proposal described in section 2.2 of the proponent's referral (September 2020), as amended by the change to proposal approved under section 43A on 6 April 2021, may be implemented and that the implementation of the proposal is subject to the following implementation conditions and procedures:

1 Limitations and Extent of Proposal

When implementing the proposal, the proponent shall ensure the proposal does not exceed the following extents:

Element	Location	Limitation or maximum extent
Physical elements		
Development envelope	Figure 1	164.6 ha
Disturbance footprint	Figure 1	80.7 ha
Direct disturbance of native vegetation	within the development envelope in Figure 1	No more than 16 ha
Clearing of SCP3a <i>Corymbia calophylla</i> - <i>Kingia australis</i> woodlands on heavy soils, Swan Coastal Plain	within the development envelope in Figure 1	No more than 2.26 ha
Clearing of SCP3c <i>Corymbia calophylla</i> - <i>Xanthorrhoea preissii</i> woodlands and shrublands, Swan Coastal Plain	within the development envelope in Figure 1	No more than 0.48 ha
Clearing of native vegetation within the Guildford Complex	within the development envelope in Figure 1	No more than 4.44 ha
Clearing of <i>Johnsonia pubescens</i> subsp. <i>cygnorum</i>	within the development envelope in Figure 1	No more than three individuals
Clearing of <i>Drosera oreopodion</i>	within the development envelope in Figure 1	Clearing/taking of only those plants on the western side of the existing railway alignment.
Clearing of native vegetation within Bush Forever sites	within the development envelope in Figure 1	No more than 1.54 ha
Disturbance of Conservation Category Wetlands	within the development envelope in Figure 1	No more than 3.5 ha of which 2.6 ha retains wetland or conservation values
Clearing of foraging habitat for Carnaby's cockatoo (<i>Calyptorhynchus latirostris</i>)	within the development envelope in Figure 1	No more than 8.65 ha of moderate quality and 10.67 ha of low quality foraging habitat

Element	Location	Limitation or maximum extent
Clearing of foraging habitat for forest red-tailed black cockatoo (<i>Calyptorhynchus banksii naso</i>)	within the development envelope in Figure 1	No more than 8.65 ha of moderate to high quality and 52.49 ha of low quality foraging habitat
Clearing of foraging habitat for Baudin's cockatoo (<i>Calyptorhynchus baudinii</i>)	within the development envelope in Figure 1	No more than 8.65 ha of moderate foraging habitat
Clearing of black cockatoo potential breeding trees	within the development envelope in Figure 1	No more than 131 trees with no hollows present, no more than 8 with unsuitable hollows and no trees with suitable hollows.

2 Terrestrial Fauna

2-1 The proponent shall undertake the following actions to minimise impacts to terrestrial fauna:

- (1) during clearing activities, ensure the use of appropriately **qualified and licensed terrestrial fauna spotter(s)**;
- (2) within seven (7) days prior to clearing, using **qualified and licensed terrestrial fauna spotter(s)** with experience in surveying for **black cockatoos**, inspect all **potential nesting trees** with hollows at risk of being impacted by construction activities associated with the proposal to determine if any hollows are being used for nesting by **black cockatoos**; and
- (3) if any hollows are in use by **black cockatoos** for nesting, the proponent shall not **disturb** or clear the nesting tree, or vegetation within a ten (10) metre radius of the nesting tree, until after the cockatoos have naturally completed nesting (young have fledged and dispersed) and an appropriately **qualified and licensed terrestrial fauna spotter** has verified that the hollow(s) are no longer being used by the **black cockatoos**.

3 Wungong Brook

3-1 The proponent shall:

- (1) construct the new Wungong Brook crossing to ensure the hydrological regime of Wungong Brook is maintained during operation of the proposal;

- (2) construct the proposal to meet the following environmental objectives:
 - (a) avoid where possible, otherwise minimise, direct and **indirect impacts** to the ecological and hydrological functions of Wungong Brook from construction activities including but not limited to erosion, sedimentation, pollutants, weed and disease introduction, vegetation clearing, and changes to ecological values; and
 - (b) avoid where possible, otherwise minimise, direct and **indirect impacts** to Carter's freshwater mussel and suitable habitat.
- 3-2 To achieve the objectives of condition 3-1(2), prior to **ground-disturbing activities** for the purposes of constructing the Wungong Brook crossing unless otherwise agreed in writing by the **CEO**, the proponent shall prepare and submit a Wungong Brook Management Plan. This Plan shall:
 - (1) when implemented, substantiate and ensure that condition 3-1 is being met;
 - (2) describe measures to ensure the requirements of condition 3-1 will be met;
 - (3) detail how the banks of the Wungong Brook will be reinstated in the event they are altered or disturbed from activities associated with construction of the proposal, including for the removal of the existing Wungong Brook crossing;
 - (4) detail the management measures that will be implemented to minimise turbidity as a result of construction activities within the channel of Wungong Brook;
 - (5) detail the management measures that will be implemented to avoid direct discharge to Wungong Brook during dewatering activities; and
 - (6) be prepared in consultation with the South West Aboriginal Land and Sea Council and the Department of Biodiversity, Conservation and Attractions.
 - (7) The proponent:
 - (a) may review and revise the Wungong Brook Management Plan; or
 - (b) shall review and revise the Wungong Brook Management Plan as and when directed by the **CEO** by a notice in writing.
- 3-3 The proponent shall not commence **ground-disturbing activities** associated with the removal of the existing Wungong Brook crossing or construction of the new Wungong Brook crossings (whichever occurs earlier) until the **CEO** has approved by notice in writing the Wungong Brook Management Plan required

by condition 3-2. The proponent shall implement the version of the Wungong Brook Management Plan approved by the **CEO**.

- 3-4 Within twelve (12) months following completion of construction of the proposal, the proponent shall undertake rehabilitation of the banks of the Wungong Brook using locally native species to reinstate foreshore vegetation and fauna habitat in areas temporarily disturbed during construction along Wungong Brook.
- 3-5 When a notification to the **CEO** occurs in accordance with condition 9-5, the proponent shall provide a report to the **CEO** within sixty (60) days if the actions, objectives, or targets in the Wungong Brook Management Plan are unable to be met, and provide details and timing of **contingency actions** to be undertaken, to the satisfaction of the **CEO**.
- 3-6 The proponent shall report to the **CEO** on the outcomes of the **contingency actions** as required by condition 3-5 within sixty (60) days of completion.
- 3-7 The proponent shall continue to implement **contingency actions** as required by condition 3-5 until the **CEO** has confirmed by notice in writing that the proponent has demonstrated that the objective in condition 3-1 is being met.

4 Indirect Impacts – Lambert Lane, Fletcher Park and *Drosera oreopodion*

- 4-1 During construction of the proposal, the proponent shall undertake measures to avoid where possible, otherwise minimise, proposal attributable **indirect impacts** to **native vegetation** outside the **disturbance footprint** in Lambert Lane Nature Reserve, Bush Forever site 264 and Crown Reserve R14217.
- 4-2 Following construction of the proposal, the proponent shall undertake weed control for five (5) years within Lambert Lane Nature Reserve, Bush Forever site 264 and Crown Reserve R14217 within ten (10) metres of the **disturbance footprint** to ensure there is no change attributable to the proposal from the baseline composition and cover of weeds determined prior to construction.
- 4-3 The proponent shall undertake measures to avoid, where possible, otherwise minimise proposal attributable **indirect impacts** within the development envelope to the *Drosera oreopodion* plants on the eastern side of the existing railway alignment.
- 4-4 The proponent shall prepare and submit a report to demonstrate that the requirements of conditions 4-1, 4-2 and 4-3 have been met to the satisfaction of the **CEO**. The first report shall be submitted within three (3) months of the completion of construction and then annually with the Compliance Assessment Report.

5 Social Surroundings (Noise)

- 5-1 The proponent shall implement the proposal to meet the following environmental objective:

- (1) minimise operational noise and vibration impacts on existing noise sensitive receptors as far as practicable.
- 5-2 At least three (3) months prior to the operation of the proposal, in order to meet the requirements of condition 5-1(1), the proponent shall submit a revised Byford Rail Extension Operational Noise and Vibration Management Plan to include:
 - (1) the details of any relevant mitigation measures to confirm that noise and vibration criteria will be met;
 - (2) an update to Section 5 Management plan and Appendix C Noise and vibration mitigation extent options of the Byford Rail Extension Operational Noise and Vibration Management Plan (Reference: 675.11323.01500-R02 January 2021), to show the locations and minimum heights of noise walls, rail damper locations and ballast matting locations; and
 - (3) demonstration that the design and construction of mitigation measures will meet the noise and vibration objectives set out in section 2 Assessment framework and design objectives of the Byford Rail Extension Operational Noise and Vibration Management Plan (Reference: 675.11323.01500-R02 January 2021).
 - (4) The proponent:
 - (a) may review and revise the Byford Rail Extension Operational Noise and Vibration Management Plan; or
 - (b) shall review and revise the Byford Rail Extension Operational Noise and Vibration Management Plan as and when directed by the **CEO** by a notice in writing.
- 5-3 The proponent shall implement the revised Byford Rail Extension Operational Noise and Vibration Management Plan, or the most recent version, which the **CEO** has confirmed by notice in writing satisfies the requirements of condition 5-2.
- 5-4 The proponent shall continue to implement the revised Byford Rail Extension Operational Noise and Vibration Management Plan, or any subsequently approved revisions until the **CEO** has confirmed by notice in writing that the proponent has demonstrated that the objective in condition 5-1(1) is being and will continue to be met.
- 5-5 In the event of failure to implement management actions detailed in the approved Byford Rail Extension Operational Noise and Vibration Management Plan, the proponent shall meet the requirements of condition 9-5 (Compliance Reporting) and shall implement the corrective actions outlined in the approved

Byford Rail Extension Operational Noise and Vibration Management Plan, including, but not limited to, actions and investigations to be undertaken.

6 Offsets

6-1 The proponent shall implement offset measures to achieve the objective of counterbalancing the significant residual impact to the following environmental values:

- (1) 2.26 ha of SCP 3a *Corymbia calophylla* - *Kingia australis* woodlands on heavy soils, Swan Coastal Plain;
- (2) 0.48 ha of SCP 3c *Corymbia calophylla* - *Xanthorrhoea preissii* woodlands and shrublands, Swan Coastal Plain;
- (3) 4.44 ha of native vegetation within the Guildford Complex;
- (4) 1.54 ha of native vegetation within Bush Forever;
- (5) 8.65 ha of moderate quality Carnaby's cockatoo foraging habitat;
- (6) 8.65 ha of moderate to high quality forest red-tailed black cockatoo foraging habitat;
- (7) 8.65 ha of moderate quality Baudin's cockatoo foraging habitat;
- (8) 139 black cockatoo potential breeding trees; and
- (9) 2.6 ha of Conservation Category Wetlands.

6-2 To meet the requirement of condition 6-1 the proponent shall tangibly improve the environmental values by implementing **on-ground management** to the extent and at the locations as set out and described in Table 1:

Table 1: Location and extent of offset measures required to meet the requirement of condition 6-1

Environmental value	Offset location	Extent of location to receive offset measures
SCP 3a <i>Corymbia calophylla</i> - <i>Kingia australis</i> woodlands on heavy soils, Swan Coastal Plain	Lambert Lane Nature Reserve	At least 3.3 ha
	Brickwood Reserve	At least 6.5 ha
SCP 3c <i>Corymbia calophylla</i> - <i>Xanthorrhoea preissii</i> woodlands and shrublands, Swan Coastal Plain	Roman Road Nature Reserve	At least 3.0 ha
Guildford Complex	Lowlands Nature Reserve	4.4 ha
Bush Forever	Lambert Lane Nature Reserve	3.1 ha

Environmental value	Offset location	Extent of location to receive offset measures
Moderate quality Carnaby's cockatoo foraging habitat	Lowlands Nature Reserve	At least 47.05 ha
Moderate to high quality forest red-tailed black cockatoo foraging habitat	Lowlands Nature Reserve	At least 76.8 ha
Moderate quality Baudin's cockatoo foraging habitat	Lowlands Nature Reserve	At least 70.6 ha
Black cockatoo potential breeding trees	Lowlands Nature Reserve	417 trees
Conservation Category Wetlands	Lambert Lane Nature Reserve	3.6 ha
	Brickwood Reserve	4.2 ha

Byford Rail Extension Offset Management Plan

- 6-3 Prior to **ground-disturbing activities**, or as agreed by the **CEO**, the proponent shall prepare and submit a Byford Rail Extension Offset Management Plan to the requirements of the **CEO**.
- 6-4 The Byford Rail Extension Offset Management Plan shall:
- (1) demonstrate that the objective in condition 6-1 will be met;
 - (2) describe how and when the offset measures will be implemented consistent with condition 6-2;
 - (3) be prepared on advice of the Department of Biodiversity, Conservation and Attractions, the Department of Planning, Lands and Heritage and the Shire of Serpentine-Jarrahdale;
 - (4) spatially identify the **Proposed Offset Conservation Area(s)** for **on-ground management** offset extent and measures consistent with condition 6-2, and that contains the environmental values identified in condition 6-1. Submit shapefiles for each of the **Proposed Offset Conservation Area(s)**;
 - (5) identify and spatially define the values used to calculate the extent of offset required at each offset location as set out in condition 6-2 and as described in sections 3, 4 and 5 and Appendix B of the *Byford Rail Extension Offset Strategy, August 2021*;
 - (6) demonstrate how the environmental values within the **Proposed Offset Conservation Area(s)** will be maintained and improved in order to counterbalance the significant residual impact to the environmental values in condition 6-1 through application of the principles of the WA Environmental Offsets Policy and completion of the **WA Offsets Template**, as described in the *WA Environmental Offsets Guidelines*,

and the *Environment Protection and Biodiversity Conservation Act 1999* *Environmental Offsets Policy Assessment Guide*, or any subsequent revisions of these documents;

- (7) for each offset location as set out in Table 1:
- (a) include baseline information for vegetation quality and condition in the **Proposed Offset Conservation Area(s)** that reflects the offset quantification for each environmental value as set out in sections 3, 4 and 5 and Appendix B of the *Byford Rail Extension Offset Strategy, August 2021*;
 - (b) state the targets to be achieved, including completion criteria and vegetation condition, which result in a **tangible improvement** to the environmental values being offset;
 - (c) demonstrate the consistency of the targets with the objectives of any relevant guidance, including but not limited to, recovery plans or area management plans;
 - (d) detail the **on-ground management** actions with associated timeframes for implementation and completion, to achieve the targets and objectives identified in condition 6-4(7)(a) and condition 6-4(7)(b);
 - (e) define the role of the proponent and/or any relevant management authority or other third party involved in delivering the offset, including contribution of funds to maintain the offset for twenty (20) years; and
 - (f) detail the monitoring, reporting and evaluation mechanisms for the targets, objectives, and actions identified under condition 6-4(7)(a), condition 6-4(7)(b) and condition 6-4(7)(c).

Research Plan

6-5 The proponent shall prepare and submit a Research Plan, prepared to the **CEO's** satisfaction on advice from Department of Biodiversity, Conservation and Attractions, within twelve (12) months of the publication of this Statement, with the aim to:

- (1) develop cost effective methods for rehabilitating and improving the buffers and resilience of remnant occurrences of the SCP 3a *Corymbia calophylla* - *Kingia australis* woodlands on heavy soils community to apply to Fletcher Park, and/or other suitable location(s) as agreed by the **CEO**;

- (2) advance the current knowledge of *Drosera oreopodion* by undertaking research on the ecology, biology and taxonomy of the species. This includes research on the habitat requirements, propagation and breeding, and potential taxonomic status; and
- (3) locate potential populations by using the information obtained from the research in condition 6-5(2), to undertake additional surveys and searches of possible *Drosera oreopodion* habitat.

6-6 The Research Plan is to include:

- (1) a procedure for incorporating the findings and learnings from the research in relation to condition 6-5(1) into the Byford Rail Extension Offset Management Plan, or its future revisions, where relevant; and
- (2) in relation to condition 6-5(2), be prepared in consultation with an independent expert with specialist technical knowledge of *Drosera oreopodion*.

6-7 The proponent:

- (1) may review and revise the Byford Rail Extension Offset Management Plan and/or the Research Plan; or
- (2) shall review and revise the Byford Rail Extension Offset Management Plan and/or the Research Plan as and when directed by the **CEO** by a notice in writing.

6-8 The proponent shall implement the latest revision of the Byford Rail Extension Offset Management Plan and the Research Plan approved by the **CEO**.

6-9 The proponent shall continue to implement the Byford Rail Extension Offset Management Plan until the **CEO** has confirmed by notice in writing that the proponent has demonstrated that the objective in condition 6-1 is being met.

6-10 The proponent shall, within ninety (90) days of completing implementation of the plans, report to the **CEO** on the outcomes of the actions, objectives, and targets in the Byford Rail Extension Offset Management Plan, and where relevant, the findings from the Research Plan.

6-11 When a notification to the **CEO** occurs in accordance with condition 9-5, the proponent shall provide a report to the **CEO** within sixty (60) days if the actions, objectives, or targets in the Byford Rail Extension Offset Management Plan are unable to be met, and provide details and timing of **contingency actions** to be undertaken, to the satisfaction of the **CEO**.

6-12 The proponent shall report to the **CEO** on the outcomes of the **contingency actions** as required by condition 6-11 within sixty (60) days of completion.

6-13 The proponent shall continue to implement **contingency actions** as required by condition 6-11 until the **CEO** has confirmed by notice in writing that the proponent has demonstrated that the objective in condition 6-1 is being met.

7 Contact Details

7-1 The proponent shall notify the **CEO** of any change of its name, physical address or postal address for the serving of notices or other correspondence within twenty-eight (28) days of such change. Where the proponent is a corporation or an association of persons, whether incorporated or not, the postal address is that of the principal place of business or of the principal office in the State.

8 Time Limit for Proposal Implementation

8-1 The proponent shall not commence implementation of the proposal after five (5) years from the date of this Statement, and any commencement, prior to this date, must be substantial.

8-2 By the date that is five (5) years from the date of this Statement, the proponent shall notify the **CEO** in writing of the date of substantial commencement of the proposal, together with reasons why that date has been selected.

9 Compliance Reporting

9-1 The proponent shall prepare, and maintain a Compliance Assessment Plan which is submitted to the **CEO** at least six (6) months prior to the first Compliance Assessment Report required by condition 9-6, or prior to implementation of the proposal, whichever is sooner.

9-2 The Compliance Assessment Plan shall indicate:

- (1) the frequency of compliance reporting;
- (2) the approach and timing of compliance assessments;
- (3) the retention of compliance assessments;
- (4) the method of reporting of potential non-compliances and corrective actions taken;
- (5) the table of contents of Compliance Assessment Reports; and
- (6) public availability of Compliance Assessment Reports.

9-3 After receiving notice in writing from the **CEO** that the Compliance Assessment Plan satisfies the requirements of condition 9-2 the proponent shall assess compliance with conditions in accordance with the Compliance Assessment Plan required by condition 9-1.

- 9-4 The proponent shall retain reports of all compliance assessments described in the Compliance Assessment Plan required by condition 9-1 and shall make those reports available when requested by the **CEO**.
- 9-5 The proponent shall advise the **CEO** of any potential non-compliance within seven (7) days of that non-compliance being known.
- 9-6 The proponent shall submit to the **CEO** the first Compliance Assessment Report fifteen (15) months from the date of issue of this Statement addressing the twelve (12) month period from the date of issue of this Statement and then annually from the date of submission of the first Compliance Assessment Report, or as otherwise agreed in writing by the **CEO**.

The Compliance Assessment Report shall:

- (1) be endorsed by the proponent's Chief Executive Officer or a person delegated to sign on the Chief Executive Officer's behalf;
- (2) include a statement as to whether the proponent has complied with the conditions;
- (3) identify all potential non-compliances and describe corrective and preventative actions taken;
- (4) be made publicly available in accordance with the approved Compliance Assessment Plan; and
- (5) indicate any proposed changes to the Compliance Assessment Plan required by condition 9-1.

10 Public Availability of Data

- 10-1 Subject to condition 10-2, within a reasonable time period approved by the **CEO** of the issue of this Statement and for the remainder of the life of the proposal, the proponent shall make publicly available, in a manner approved by the **CEO**, all validated environmental data (including sampling design, sampling methodologies, empirical data and derived information products (e.g. maps)), management plans and reports relevant to the assessment of this proposal and implementation of this Statement.
- 10-2 If any data referred to in condition 10-1 contains particulars of:
- (1) a secret formula or process; or
 - (2) confidential commercially sensitive information,

the proponent may submit a request for approval from the **CEO** to not make these data publicly available. In making such a request the proponent shall provide the **CEO** with an explanation and reasons why the data should not be made publicly available.

[signed on 1 February 2022]

Hon Reece Whitby MLA

MINISTER FOR ENVIRONMENT; CLIMATE ACTION

Key decision-making authorities consulted under section 45(2):
Minister for Water Minister for Aboriginal Affairs Minister for Lands Minister for Planning; and Transport

Table 2: Abbreviations and definitions

Acronym or abbreviation	Definition or term
Black cockatoos	Includes Carnaby's cockatoo (<i>Calyptorhynchus latirostris</i>), forest red-tailed black cockatoo (<i>Calyptorhynchus banksii naso</i>) and Baudin's cockatoo (<i>Calyptorhynchus baudinii</i>).
Black cockatoo potential breeding trees	Any existing tree of a species known to support black cockatoo breeding which has a hollow or has a diameter at breast height of 500 millimetres or greater and therefore may develop a breeding hollow.
<i>Byford Rail Extension Offset Strategy, August 2021</i>	Public Transport Authority 2021 <i>Byford Rail Extension Offset Strategy</i> , Final/Rev 0, August 2021.
CEO	The Chief Executive Officer of the Department of the Public Service of the State responsible for the administration of section 48 of the <i>Environmental Protection Act 1986</i> , or his/her delegate.
Conservation Category Wetlands	As identified in the Geomorphic Wetlands of the Swan Coastal Plain (DBCA-019) dataset.
Contingency actions	Actions to be implemented when monitoring determines that a management target may not be met, and where the actions will bring the impact within the management target.
Development envelope	The area within the red line marked in Figure 1 of this Statement and defined by co-ordinates in Schedule 1.
Disturbance footprint	The blue shaded area within the blue line marked in Figure 1 of this Statement and defined by co-ordinates in Schedule 1.
Disturb	Is to be defined as per the definition of 'disturb' in section 5 [subsection disturb – (a)(i)(ii)(iii) and (iv)] of the <i>Biodiversity Conservation Act 2016</i> .
Ground-disturbing activities	Activities that are associated with the substantial implementation of a proposal including but not limited to, digging (with mechanised equipment), blasting, earthmoving, vegetation clearance, grading, gravel extraction, construction of new or widening of existing roads and tracks. Ground-disturbing activities does not include Geotechnical investigations (including potholing for services and the installation of piezometers) and other preconstruction activities where no clearing of vegetation is required.
Guildford complex	A mixture of open forest to tall open forest of <i>Corymbia calophylla</i> (Marri) - <i>Eucalyptus wandoo</i> (Wandoo) - <i>Eucalyptus marginata</i> (Jarrah) and woodland of <i>Eucalyptus wandoo</i> (Wandoo) (with rare occurrences of <i>Eucalyptus lane-poolei</i> (Salmon White Gum)). Minor components include <i>Eucalyptus rudis</i> (Flooded Gum) – <i>Melaleuca raphiophylla</i> (Swamp Paperbark) (GIS dataset: Vegetation Complexes – Swan Coastal Plain (DBCA-046)).
ha	Hectare

Acronym or abbreviation	Definition or term
Indirect impacts	Any potential impacts outside the development envelope, and any potential impacts outside the disturbance footprint specifically related to the eastern population of <i>Drosera oreopodion</i> , Lambert Lane Nature Reserve, Bush Forever site 264 and Crown Reserve R14217, as a result of authorised clearing and disturbance or other project activities. This includes but is not limited to hydrological change, weed invasion, altered fire regimes, introduction or spread of disease, changes in erosion/deposition/accretion and edge effects.
Native vegetation	Defined in sections 3(1) and 51A of the <i>Environmental Protection Act 1986</i>
On-ground management	<p>This includes revegetation (re-establishment of native vegetation in degraded areas) and/or rehabilitation (repair of ecosystem processes and management of weeds, disease or feral animals) with the objective to achieve a tangible improvement to the environmental values in the offset area.</p> <p>Actions associated with on-ground management must be additional to those undertaken by the land manager as required by legislation.</p>
Potential nesting trees	Any existing tree of a species known to support black cockatoo breeding which has a hollow and therefore may be being used for nesting.
Proposed Offset Conservation Area(s)	The areas of land identified in condition 6-4(4).
Qualified and licensed terrestrial fauna spotter(s)	Minimum of 3 years' experience for someone with appropriate qualifications, or a minimum of 5 years' experience for someone without appropriate qualifications, and licensed under section 10 of the <i>Biodiversity Conservation Act 2016</i> .
Revegetation	Deliberate re-establishment of native vegetation in degraded areas.
Tangible improvement	Demonstrated improvement of environmental values being offset as a direct result of on-ground management and/or revegetation.
WA Offsets Template	Template to be used to quantify the quantum of impact and offset extent required to counterbalance the proposal's significant residual impacts, as detailed in the <i>WA Environmental Offsets Guidelines</i> .

Figure (attached)

Figure 1 Byford rail extension development envelope and disturbance footprint
(This figure is a representation of the co-ordinates held by DWER (Doc Ref DWERDT505054))

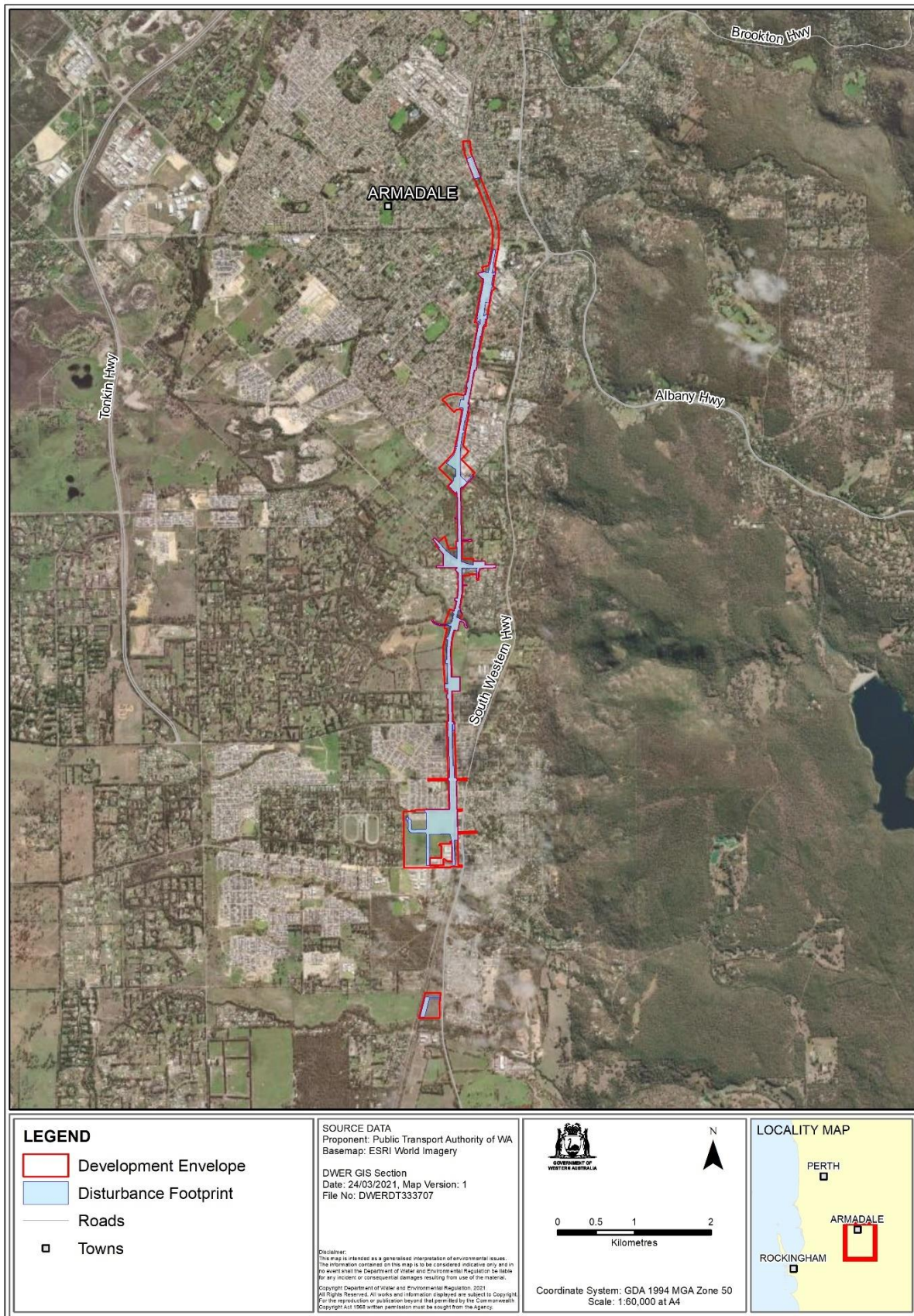


Figure 1: Byford rail extension development envelope and disturbance footprint

Schedule 1

All co-ordinates are in metres, listed in Map Grid of Australia Zone 50 (MGA Zone 50) datum of Geocentric Datum of Australia 1994 (GDA94)

Spatial data depicting Figure 1 are held by the Department of Water and Environmental Regulation as follows:

- Figure 1: Byford rail extension development envelope and disturbance footprint (DWERDT505054).

Attachment 1 to Ministerial Statement 1183

Amendment to proposal approved under section 45C of the *Environmental Protection Act 1986*

This Attachment replaces Schedule 1 and Figure 1 of Ministerial Statement 1183

Proposal: BYFORD RAIL EXTENSION

Proponent: Public Transport Authority of Western Australia

Changes:

- Change to the extent of the development envelope and locations of disturbance footprint, as depicted in Figure 1 of Attachment 1. There is no change to the total area of the disturbance footprint.
- Change to Figure 1 and associated spatial data

Spatial data depicting Figure 1 are held by the Department of Water and Environmental Regulation: Record no: [DWER-1176098282-200538](#)

All co-ordinates are in metres, listed in Map Grid of Australia Zone 50 (MGA Zone 50), datum of Geocentric Datum of Australia 2020 (GDA2020)

Figures (attached)

Figure 1: Byford rail extension development envelope and disturbance footprint



Lee McIntosh
DEPUTY CHAIR
Environmental Protection Authority
under delegated authority

Approval date: 10 October 2024

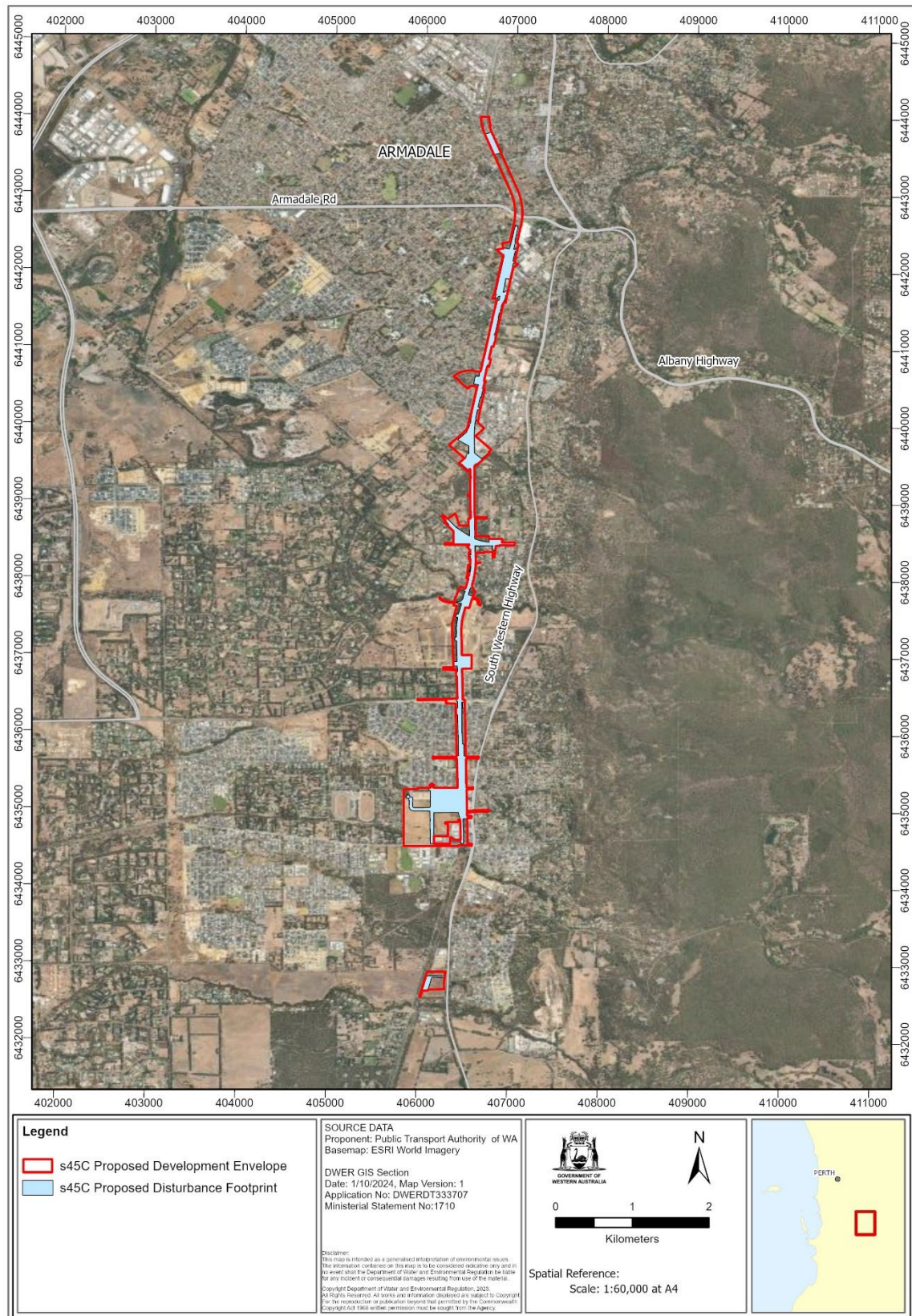


Figure 1: Byford rail extension development envelope and disturbance footprint.