

Disclaimer**THIS DOCUMENT**

This document has been produced by the Office of the Appeals Convenor as an electronic version of the original Statement for the proposal listed below as signed by the Minister and held by this Office. Whilst every effort is made to ensure its accuracy, no warranty is given as to the accuracy or completeness of this document.

The State of Western Australia and its agents and employees disclaim liability, whether in negligence or otherwise, for any loss or damage resulting from reliance on the accuracy or completeness of this document.

Copyright in this document is reserved to the Crown in right of the State of Western Australia. Reproduction except in accordance with copyright law is prohibited.

Statement No. 1243

STATEMENT THAT A PROPOSAL MAY BE IMPLEMENTED
(*Environmental Protection Act 1986*)

YARNIMA POWER STATION STAGE 4 (GAS RECIPROCATING ENGINES)

Proposal: The Proposal is to increase power generation at the existing Yarnima Power Station, through the installation and operation of gas reciprocating engines, approximately 2 kilometres north-west of Newman in the Pilbara.

Proponent: BHP Iron Ore Pty Ltd
Australian Company Number 008 700 981

Proponent address: 125 St Georges Terrace
Perth WA 6000

Assessment number: 2433

Report of the Environmental Protection Authority: 1776

Introduction: Pursuant to section 45 of the *Environmental Protection Act 1986*, it has been agreed that the proposal entitled Yarnima Power Station Stage 4 described in the 'Proposal Content Document' attachment of the referral of 29 April 2024, may be implemented and that the implementation of the proposal is subject to the following implementation conditions and procedures.

Conditions and procedures**Part A: Proposal extent****Part B: Environmental outcomes, prescriptions and objectives****Part C: Other conditions**

Published on: 20 January 2025

PART A: PROPOSAL EXTENT

A1 Limitations and Extent of Proposal

A1-1 The proponent must ensure that the proposal is implemented in such a manner that the following limitations or maximum extents / capacities / ranges are not exceeded:

Proposal element	Location	Maximum extent
Physical elements		
Overall extent of the Proposal	Within the development envelope shown in Figure 1	47 ha
Operational Elements		
Power Generation via Gas Reciprocating Engines	Within the development envelope shown in Figure 1	120 MW
Timing elements		
Proposal time	Maximum project life	Up to 38 years
	Construction	Up to 3 years
	Operations	Up to 26 years

PART B – ENVIRONMENTAL OUTCOMES, PRESCRIPTIONS AND OBJECTIVES

B1 Greenhouse Gas Emissions

B1-1 The proponent must notify the CEO in writing within one month of it becoming aware that implementation of the proposal will not be or is not expected to be regulated under the **Safeguard Legislation** as a designated large facility (the **notifiable event**) and such notice must briefly describe the reasons for and expected duration of the notifiable event.

B1-2 The proponent must, if requested in writing by the CEO, provide the CEO with a report on the implications for the proposal of any amendment or proposed amendment to the **Safeguard Legislation**, or a decision or proposed decision made under the **Safeguard Legislation** that is specified in the CEO's request.

B1-3 The report required by condition B1-2 must:

- (1) be submitted to the CEO within three months of the date of the CEO's request or such longer period as the CEO agrees to in writing; and
- (2) explain the implications that the specified amendment or decision has had or is expected to have on:
 - (a) the obligation to reduce net Scope 1 greenhouse gas emissions from implementation of the proposal under the **Safeguard Legislation**; and
 - (b) the quantity of actual and net Scope 1 greenhouse gas emissions likely to result from the future implementation of the proposal.

PART C – OTHER CONDITIONS

C1 Contact Details

C1-1 The proponent must notify the **CEO** of any change of its name, physical address or postal address for the serving of notices or other correspondence within twenty-eight (28) days of such change. Where the proponent is a corporation or an association of persons, whether incorporated or not, the postal address is that of the principal place of business or of the principal office in the State.

C2 Time Limit for Proposal Implementation

C2-1 The proposal must be **substantially commenced** within five (5) years from the date of this Statement.

C2-2 The proponent must provide to the **CEO** documentary evidence demonstrating that they have complied with condition C2-1 no later than fourteen (14) days after the expiration of period specified in condition C2-1.

C2-3 If the proposal has not been **substantially commenced** within the period specified in condition C2-1, implementation of the proposal must not be commenced or continued after the expiration of that period.

[signed on 17 January 2025]

Hon Reece Whitby MLA
MINISTER FOR ENVIRONMENT; CLIMATE ACTION

Key decision-making authorities consulted under section 45(2):

Minister for State Development

Table 1: Abbreviations and definitions

Acronym or abbreviation	Definition or term
CEO	The Chief Executive Officer of the Department of the Public Service of the State responsible for the administration of section 48 of the <i>Environmental Protection Act 1986</i> , or the CEO's delegate.
GHG emissions	Greenhouse gas emissions expressed in tonnes of carbon dioxide equivalent (CO ₂ -e) as calculated in accordance with the definition of 'carbon dioxide equivalence' in Section 7 of the <i>National Greenhouse and Energy Reporting Act 2007</i> (Cth), or, if that definition is amended or repealed, the meaning set out in an Act, regulation or instrument concerning greenhouse gases as specified by the Minister.
ha	Hectare(s)
Operations / Commencement of operations	Operation of the plant infrastructure for the proposal and includes pre-commissioning, commissioning, start-up and operation of the plant infrastructure for the proposal.
Proposal GHG emissions	Scope 1 GHG Emissions released to the atmosphere as a direct result of an activity or series of activities that comprise/s or form/s part of the proposal, calculated in accordance with: (a) the <i>National Greenhouse and Energy Reporting Act 2007</i> (Cth) and its subsidiary legislation; or if that Act or the relevant subsidiary legislation is amended or repealed such that it does not provide a mechanism for calculating the Proposal Emissions, any other Act, regulation or instrument concerning greenhouse gases as specified by the CEO.
Safeguard Legislation	The Commonwealth <i>National Greenhouse and Energy Reporting Act 2007</i> and associated National Greenhouse and Energy Reporting (Safeguard Mechanism) Rule 2015.
Scope 1 emissions	Scope 1 emissions of greenhouse gas, in relation to a facility, means the release of greenhouse gas into the atmosphere as a direct result of one or more activities, which are part of the proposal, that generate greenhouse gas emissions.
Substantially commenced	Physical construction activities for, and progress of an important or essential element or elements of the Proposal scope

Figure (attached)

Figure 1 Development envelope (This map is a representation of the co-ordinates referenced in Schedule 1)

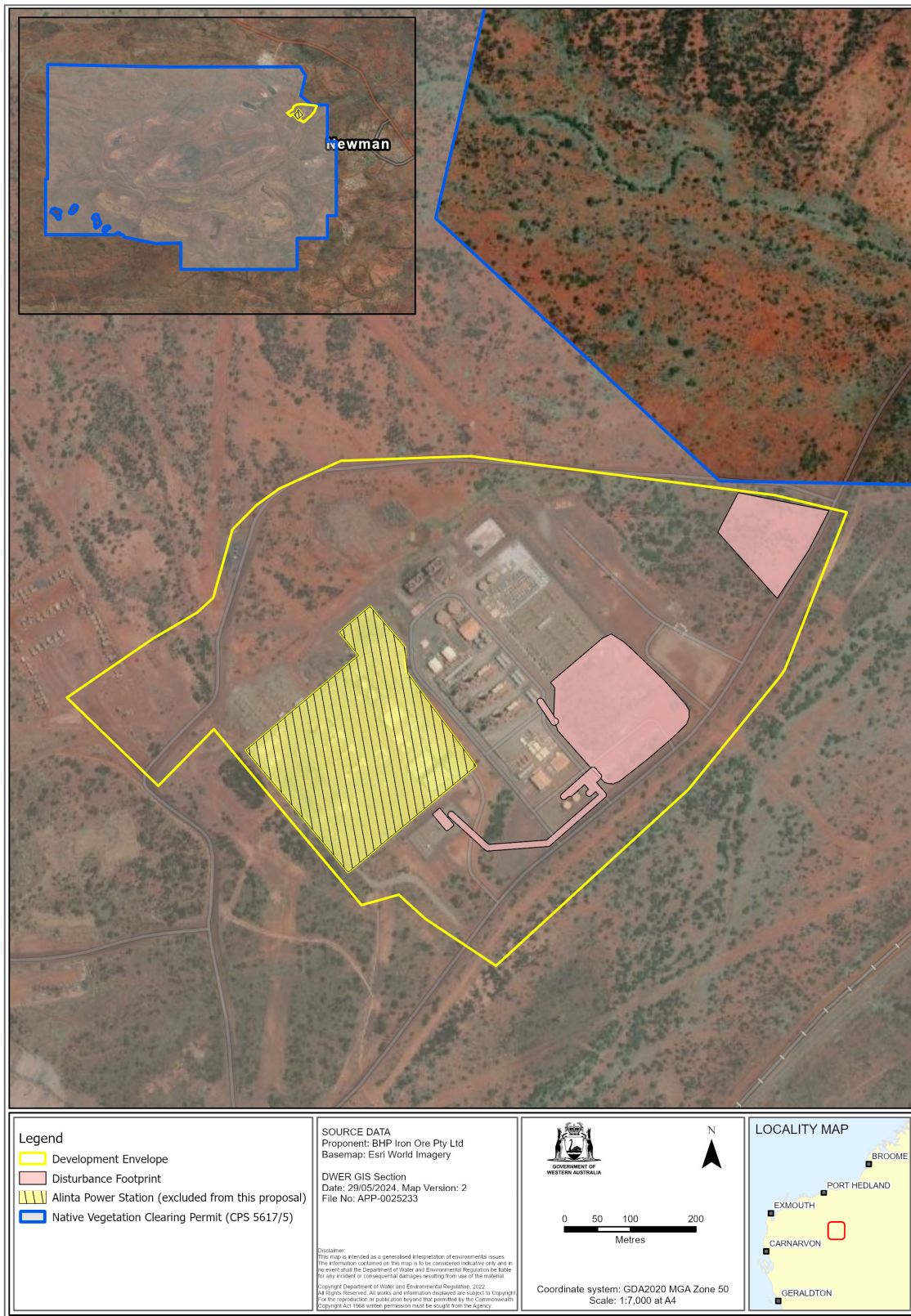


Figure 1: Development envelope and disturbance footprint for the proposal

Schedule 1

All co-ordinates are in metres, listed in Map Grid of Australia Zone 50 (MGA Zone 50), datum of Geocentric Datum of Australia 2020 (GDA 2020).

Spatial data depicting the figures are held by the Department of Water and Environmental Regulation (DWER) Environment Online.