

THIS DOCUMENT

This document has been produced by the Office of the Appeals Convenor as an electronic version of the original Statement for the proposal listed below as signed by the Minister and held by this Office. Whilst every effort is made to ensure its accuracy, no warranty is given as to the accuracy or completeness of this document.

The State of Western Australia and its agents and employees disclaim liability, whether in negligence or otherwise, for any loss or damage resulting from reliance on the accuracy or completeness of this document.

Copyright in this document is reserved to the Crown in right of the State of Western Australia. Reproduction except in accordance with copyright law is prohibited.

Published on: 20 October 2014

Statement No. 986

STATEMENT THAT A PROPOSAL MAY BE IMPLEMENTED
(*Environmental Protection Act 1986*)

BROWNS RANGE RARE EARTHS PROJECT

Proposal: A proposed rare earth elements (REE) mine and ore processing facility at Browns Range, approximately 160 kilometres (km) southeast of Halls Creek in the Shire of Halls Creek.

Proponent: Northern Minerals Limited
Australian Company Number 119 966 353

Proponent Address: Level 1, 675 Murray Street
West Perth WA 6005

Assessment Number: 1973

Report of the Environmental Protection Authority: 1523

Pursuant to section 45 of the *Environmental Protection Act 1986* it has been agreed that the proposal described and documented in Schedule 1 may be implemented and that the implementation of the proposal is subject to the following implementation conditions and procedures:

Note: Words and expressions used in this Statement shall have the same respective meanings as in the Act or as provided for in Schedule 1 of this Statement.

1 Proposal Implementation

1-1 When implementing the proposal, the proponent shall not exceed the authorised extent of the proposal as defined in Table 2 in Schedule 1, unless amendments to the proposal and the authorised extent of the proposal have been approved under the EP Act.

2 Contact Details

- 2-1 The proponent shall notify the CEO of any change of its name, physical address or postal address for the serving of notices or other correspondence within twenty eight (28) days of such change. Where the proponent is a corporation or an association of persons, whether incorporated or not, the postal address is that of the principal place of business or of the principal office in the State.

3 Time Limit for Proposal Implementation

- 3-1 The proponent shall not commence implementation of the proposal after the expiration of five (5) years from the date of this Statement, and any commencement, within this five (5) year period, must be substantial.
- 3-2 Any commencement of implementation of the proposal, within five (5) years from the date of this Statement, must be demonstrated as substantial by providing the CEO with written evidence, on or before the expiration of five (5) years from the date of this Statement.

4 Compliance Reporting

- 4-1 The proponent shall prepare, submit and maintain a Compliance Assessment Plan to the CEO at least six (6) months prior to the first Compliance Assessment Report required by condition 4-6, or prior to implementation, whichever is sooner.
- 4-2 The Compliance Assessment Plan shall indicate:
- (1) the frequency of compliance reporting;
 - (2) the approach and timing of compliance assessments;
 - (3) the retention of compliance assessments;
 - (4) the method of reporting of potential non-compliances and corrective actions taken;
 - (5) the table of contents of Compliance Assessment Reports; and
 - (6) public availability of Compliance Assessment Reports.
- 4-3 After receiving notice in writing from the CEO that the Compliance Assessment Plan satisfies the requirements of condition 4-2 the proponent shall assess compliance with conditions in accordance with the Compliance Assessment Plan required by condition 4-1.
- 4-4 The proponent shall retain reports of all compliance assessments described in the Compliance Assessment Plan required by condition 4-1 and shall make those reports available when requested by the CEO.

- 4-5 The proponent shall advise the CEO of any potential non-compliance within fourteen (14) days of that non-compliance being known.
- 4-6 The proponent shall submit to the CEO the first Compliance Assessment Report fifteen (15) months from the date of issue of this Statement addressing the twelve (12) month period from the date of issue of this Statement and then annually from the date of submission of the first Compliance Assessment Report, or as agreed in writing by the CEO.

The Compliance Assessment Report shall:

- (1) be endorsed by the proponent's Chief Executive Officer or a person delegated to sign on the Chief Executive Officer's behalf;
- (2) include a statement as to whether the proponent has complied with the conditions;
- (3) identify all potential non-compliances and describe corrective and preventative actions taken;
- (4) be made publicly available in accordance with the approved Compliance Assessment Plan; and
- (5) indicate any proposed changes to the Compliance Assessment Plan required by condition 4-1.

5 Public Availability of Data

5-1 Subject to condition 5-2, within a reasonable time period approved by the CEO of the issue of this Statement and for the remainder of the life of the proposal the proponent shall make publicly available, in a manner approved by the CEO, all validated environmental data (including sampling design, sampling methodologies, empirical data and derived information products (e.g. maps)) relevant to the assessment of this proposal and implementation of this Statement.

5-2 If any data referred to in condition 5-1 contains particulars of:

- (1) a secret formula or process; or
- (2) confidential commercially sensitive information;

the proponent may submit a request for approval from the CEO to not make these data publicly available. In making such a request the proponent shall provide the CEO with an explanation and reasons why the data should not be made publicly available.

6 Terrestrial Vertebrate Fauna

- 6-1 The proponent shall ensure construction and operational activities of the proposal are carried out in a manner that minimises impacts to conservation significant species of terrestrial vertebrate fauna.
- 6-2 Prior to the commencement of ground-disturbing activities, the proponent shall prepare a Conservation Significant Fauna Management Plan in consultation with the Department of Parks and Wildlife to the requirements of the CEO to demonstrate condition 6-1 has been met.

The Conservation Significant Fauna Management Plan shall include:

- (1) details of a survey to be undertaken prior to clearing, to identify any conservation significant fauna that may have moved into disturbance areas prior to construction;
 - (2) protocols and procedures to monitor conservation significant fauna, identified by the survey required by condition 6-2(1), during construction and operation; and
 - (3) detailed contingency responses, including translocation, if monitoring required by condition 6-2(2) identifies conservation significant fauna within areas that could be potentially impacted during construction and operation.
- 6-3 After receiving notice in writing from the CEO that the Conservation Significant Fauna Management Plan satisfies the requirements of condition 6-2, the proponent shall undertake the survey identified in condition 6-2(1) in accordance with the Conservation Significant Fauna Management Plan.
- 6-4 On completion of the survey required by condition 6-2(1) the proponent shall report to the CEO the results of the survey identified in condition 6-2(1).
- 6-5 Prior to ground-disturbing activities, the proponent shall implement the management actions in accordance with the requirements of conditions 6-2(2) and 6-2(3).
- 6-6 The proponent shall continue to implement the management actions in accordance with the Conservation Significant Fauna Management Plan until the CEO has confirmed by notice in writing that it has been demonstrated that the objective in condition 6-1 has been met and therefore the implementation of the management actions is no longer required.
- 6-7 The proponent may review and revise the Conservation Significant Fauna Management Plan.
- 6-8 The proponent shall review and revise the Conservation Significant Fauna Management Plan as and when directed by the CEO.

6-9 The proponent shall implement the latest revision of the Conservation Significant Fauna Management Plan, which the CEO has confirmed by notice in writing, satisfies the requirements of condition 6-2.

[Signed 20 October 2014]

Albert Jacob MLA
MINISTER FOR ENVIRONMENT; HERITAGE

Table 1: Summary of the Proposal

Proposal Title	Browns Range Rare Earths Project
Short Description	A proposed rare earth elements (REE) mine and ore processing facility at Browns Range, approximately 160 kilometres (km) southeast of Halls Creek in the Shire of Halls Creek.

Table 2: Location and authorised extent of physical and operational elements

Column 1	Column 2	Column 3
Element	Location	Authorised Extent
Physical Components		
Mine pits and underground operations, infrastructure area and haul road.	Figure 1 of Schedule 1 and geographic co-ordinates as defined in Schedule 2.	Clearing of not more than 711 ha of vegetation within the development envelope of 2,590 ha.

Table 3: Abbreviations and Definitions

Acronym or Abbreviation	Definition or Term
CEO	The Chief Executive Officer of the Department of the Public Service of the State responsible for the administration of section 48 of the <i>Environmental Protection Act 1986</i> , or their delegate.
EPA	Environmental Protection Authority
EP Act	<i>Environmental Protection Act 1986</i>
OEPA	Office of the Environmental Protection Authority
ha	Hectare

Figures (attached)

Figure 1 Development envelope of the Browns Range Rare Earths Project (This figure is a representation of the co-ordinates shown in Schedule 2)

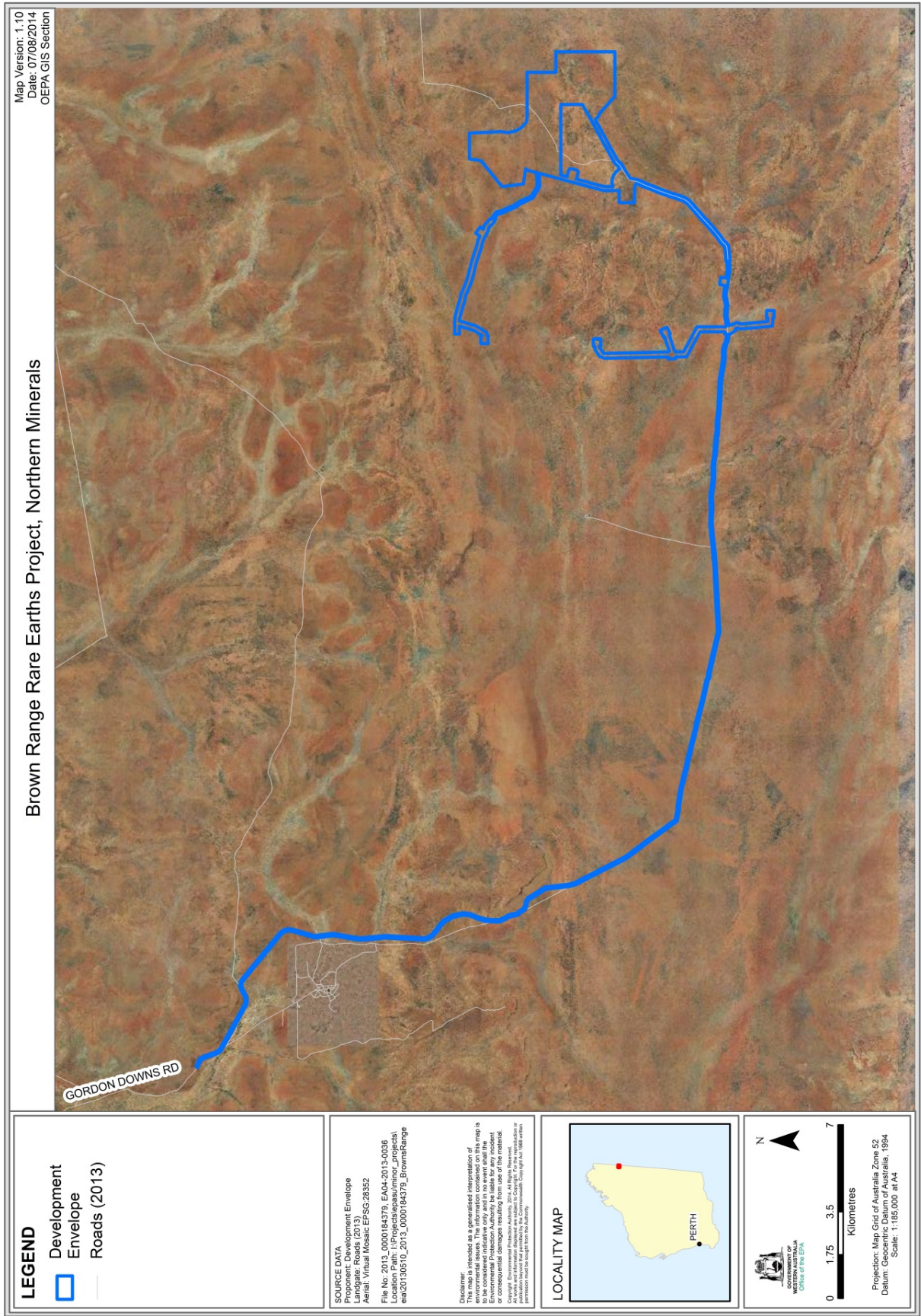


Figure 1: Development envelope of the Browns Range Rare Earths Project

Schedule 2

Development Envelope Coordinates (MGA Zone 52)

No	Easting	Northing	No	Easting	Northing	No	Easting	Northing	No	Easting	Northing
1	458903	7925204	55	469390	7907164	109	485180	7907783	163	485522	7915664
2	459008	7925200	56	469421	7907156	110	485183	7907459	164	485822	7915664
3	459112	7925221	57	469392	7907165	111	486196	7906913	165	485822	7915614
4	459351	7925355	58	470441	7906911	112	486193	7905797	166	486048	7915939
5	459479	7925402	59	471925	7906553	113	486210	7905738	167	486222	7916522
6	459640	7925406	60	472100	7906486	114	486607	7905796	168	485939	7916522
7	459807	7925344	61	472186	7906491	115	487061	7905765	169	485907	7916522
8	460015	7925179	62	473863	7906086	116	487420	7905849	170	485907	7916682
9	460762	7924567	63	476099	7906214	117	487861	7905784	171	485907	7916722
10	460796	7924539	64	478178	7906402	118	487898	7906005	172	486518	7916717
11	460796	7924539	65	479410	7906388	119	488195	7905959	173	486602	7916712
12	461725	7923771	66	480176	7906302	120	488170	7905740	174	487298	7916506
13	461855	7923509	67	480557	7906310	121	488530	7905688	175	487489	7916476
14	461855	7923326	68	481003	7906245	122	488850	7905714	176	488075	7916230
15	461585	7922378	69	482143	7906136	123	488851	7905744	177	488265	7916179
16	461670	7921727	70	482388	7906135	124	489405	7905793	178	488896	7916017
17	461670	7921589	71	484116	7906014	125	491197	7907348	179	489592	7915803
18	461565	7921015	72	484912	7905881	126	491297	7907532	180	489868	7915706
19	461506	7920590	73	485243	7905886	127	491991	7909385	181	489983	7915867
20	461586	7919512	74	485387	7905858	128	491836	7909444	182	490227	7915692
21	461509	7917915	75	485643	7905757	129	491217	7909452	183	490135	7915564
22	461588	7917718	76	485907	7905730	130	491217	7909593	184	490268	7915542
23	461748	7917555	77	485907	7905789	131	491217	7909707	185	490301	7915502
24	462078	7917308	78	485993	7905786	132	491217	7910063	186	490377	7915468
25	462146	7917237	79	485996	7906794	133	491706	7910063	187	490449	7915382
26	462194	7917187	80	484984	7907339	134	491709	7910709	188	490556	7915291
27	462194	7917186	81	484981	7907775	135	492406	7913324	189	490560	7915235
28	462243	7917133	82	484909	7907773	136	492215	7913293	190	490837	7915040
29	462417	7916824	83	484898	7908073	137	491879	7913279	191	490852	7914951
30	462506	7916406	84	484976	7908075	138	491405	7913559	192	490929	7914735
31	462482	7916104	85	484946	7909574	139	491158	7914051	193	491086	7914364
32	462340	7915745	86	484925	7910661	140	491026	7914265	194	491247	7914120
33	462262	7915485	87	484995	7910853	141	490762	7914881	195	491480	7913625
34	462246	7915328	88	485281	7911046	142	490748	7914989	196	491891	7913381
35	462238	7914896	89	485405	7911054	143	490557	7915121	197	492246	7913395
36	462402	7914590	90	485403	7911103	144	490556	7915060	198	492435	7913432
37	462465	7914406	91	485701	7911122	145	490342	7915195	199	492528	7913778
38	462505	7914206	92	485720	7910825	146	490247	7915310	200	492578	7913851
39	462562	7914143	93	485422	7910806	147	490163	7915355	201	491971	7913937
40	462701	7913942	94	485419	7910857	148	490112	7915354	202	491860	7914802
41	462782	7913895	95	485349	7910853	149	489946	7915434	203	492907	7915675
42	462901	7913872	96	485124	7910701	150	489546	7915609	204	492976	7916120
43	463034	7913828	97	485149	7909428	151	488785	7915844	205	494027	7916119
44	463097	7913787	98	485176	7908083	152	488275	7915969	206	494077	7914822
45	463357	7913379	99	485197	7908084	153	488011	7916041	207	494084	7914822
46	463552	7913049	100	485199	7908036	154	487432	7916283	208	494056	7914535
47	463664	7912094	101	485798	7908229	155	487253	7916311	209	494101	7914304
48	463745	7911830	102	485778	7908269	156	486640	7916493	210	494223	7914066
49	464761	7909873	103	486046	7908404	157	486439	7916522	211	494405	7913876
50	466266	7907800	104	486181	7908136	158	486232	7915856	212	494515	7913803
51	466676	7907722	105	485913	7908001	159	485954	7915415	213	496492	7913785
52	466829	7907721	106	485889	7908049	160	485822	7915414	214	496492	7912627
53	467634	7907583	107	485207	7907828	161	485822	7915364	215	497313	7912627
54	469390	7907165	108	485209	7907784	162	485522	7915364	216	497313	7910239

No	Easting	Northing	No	Easting	Northing	No	Easting	Northing	No	Easting	Northing
217	495511	7910238	275	480547	7906214	333	459957	7925110	391	492052	7910356
218	494818	7910862	276	480155	7906206	334	459764	7925266	392	492278	7910313
219	494746	7910885	277	479394	7906292	335	459636	7925320	393	492441	7910211
220	494672	7910930	278	478186	7906307	336	459483	7925317	394	492565	7910061
221	494622	7910979	279	476100	7906119	337	459383	7925274	395	492683	7910104
222	494584	7911033	280	473841	7905992	338	459162	7925150			
223	492921	7910126	281	472173	7906396	339	459121	7925139			
224	492795	7909989	282	472077	7906393	340	459121	7925136			
225	492656	7909904	283	471972	7906421	341	459075	7925127			
226	492553	7909840	284	471880	7906467	342	459035	7925118			
227	492291	7909676	285	471498	7906553	343	458906	7925118			
228	492206	7909621	286	471442	7906566	344	458800	7925140			
229	492180	7909525	287	471420	7906572	345	458674	7925198			
230	492179	7909525	288	469511	7907038	346	457336	7925935			
231	492145	7909342	289	469189	7907115	347	457318	7925945			
232	491453	7907494	290	469189	7907116	348	457319	7925945			
233	491416	7907394	291	467608	7907493	349	456949	7926151			
234	491316	7907240	292	466810	7907630	350	456908	7926190			
235	489594	7905732	293	466654	7907631	351	456863	7926255			
236	489446	7905637	294	466212	7907722	352	456813	7926331			
237	488850	7905583	295	465042	7909302	353	456772	7926418			
238	488850	7905612	296	464661	7909866	354	456652	7926760			
239	488568	7905587	297	464649	7909865	355	456589	7926893			
240	488153	7905639	298	464609	7909942	356	456557	7926958			
241	487429	7905750	299	464608	7909944	357	456515	7926993			
242	487058	7905665	300	464608	7909944	358	456281	7927101			
243	486622	7905697	301	463660	7911778	359	456261	7927116			
244	486238	7905641	302	463584	7912020	360	456254	7927133			
245	486310	7905496	303	463462	7913009	361	456262	7927157			
246	486279	7905477	304	463259	7913349	362	456291	7927178			
247	486365	7905337	305	463025	7913723	363	456324	7927175			
248	486312	7905130	306	462750	7913809	364	456605	7927037			
249	486407	7904058	307	462636	7913873	365	456643	7926997			
250	486559	7904052	308	462477	7914093	366	456716	7926853			
251	486561	7904109	309	462417	7914156	367	456779	7926696			
252	486860	7904097	310	462374	7914367	368	456829	7926542			
253	486848	7903797	311	462143	7914873	369	456879	7926412			
254	486549	7903809	312	462152	7915331	370	456902	7926365			
255	486550	7903852	313	462208	7915633	371	456983	7926244			
256	486224	7903870	314	462388	7916109	372	457006	7926219			
257	486110	7905146	315	462412	7916381	373	457487	7925951			
258	486150	7905304	316	462327	7916778	374	458716	7925275			
259	486110	7905370	317	462153	7917093	375	458818	7925225			
260	486052	7905342	318	462005	7917247	376	492828	7910257			
261	485907	7905570	319	461849	7917357	377	494548	7911195			
262	485905	7905630	320	461581	7917576	378	495186	7911558			
263	485611	7905663	321	461442	7917785	379	495186	7912425			
264	485356	7905763	322	461404	7918020	380	492332	7912425			
265	485230	7905786	323	461490	7919494	381	492261	7912159			
266	484899	7905783	324	461409	7920581	382	492322	7912162			
267	484100	7905916	325	461459	7920956	383	492554	7912091			
268	482374	7906038	326	461578	7921652	384	492590	7912014			
269	482140	7906043	327	461489	7922373	385	492529	7911779			
270	482140	7906038	328	461714	7923163	386	492447	7911722			
271	482084	7906044	329	461764	7923381	387	492195	7911786			
272	481997	7906045	330	461731	7923584	388	492168	7911809			
273	482006	7906051	331	461636	7923730	389	491865	7910676			
274	480973	7906150	332	460674	7924523	390	491865	7910321			

All co-ordinates are in whole metres, listed in Map Grid of Australia Zone 52 (MGA Zone 52), datum of Geodetic Datum of Australia 1994 (GDA94). Points numbered 376 and higher represent the inner part of the development envelope (within which no development will occur).

Attachment 1 to Ministerial Statement 986

Change to proposal approved under section 45C of the *Environmental Protection Act 1986*

This Attachment replaces Schedule 1 of Ministerial Statement 986

Proposal: Browns Range Rare Earths Project

Proponent: Northern Minerals Limited

Changes:

- Revise the development envelope boundaries; and
- Update Figures and reference to coordinates.

Table 1: Summary of the Proposal

Proposal Title	Browns Range Rare Earths Project
Short Description	A rare earth elements (REE) mine and ore processing facility at Browns Range, approximately 160 (km) southeast of Halls Creek in the Shire of Halls Creek.

Table 2: Location and authorised extent of physical and operational elements

Element	Location	Authorised Extent
Mine pits and underground operations, infrastructure area and haul road.	Figure 1 and geographic coordinates held by the OEPA	Clearing of not more than 711 ha of vegetation within the development envelope of 2,590 ha.

Note: Text in **bold** in Table 2 indicates a change to the proposal.

Table 3: Abbreviations and definitions

Acronym or Abbreviation	Definition of Term
CEO	The Chief Executive Officer of the Department of the Public Service of the State responsible for administration of section 48 of the <i>Environmental Protection Act 1986</i> , or their delegate.
EPA	Environmental Protection Authority
EP Act	<i>Environmental Protection Act 1986</i>
OEPA	Office of the Environmental Protection Authority
ha	Hectare

Figures – All previous Figures are replaced by the following:

Figure 1 Development envelope of the Browns Range Rare Earths Project.

Coordinates defining the development envelope are held by the Office of the Environmental Protection Authority (Reference Number 2017-1491376935989).

Dr Tom Hatton
CHAIRMAN
Environmental Protection Authority
under delegated authority

Approval date: 12 April 2017

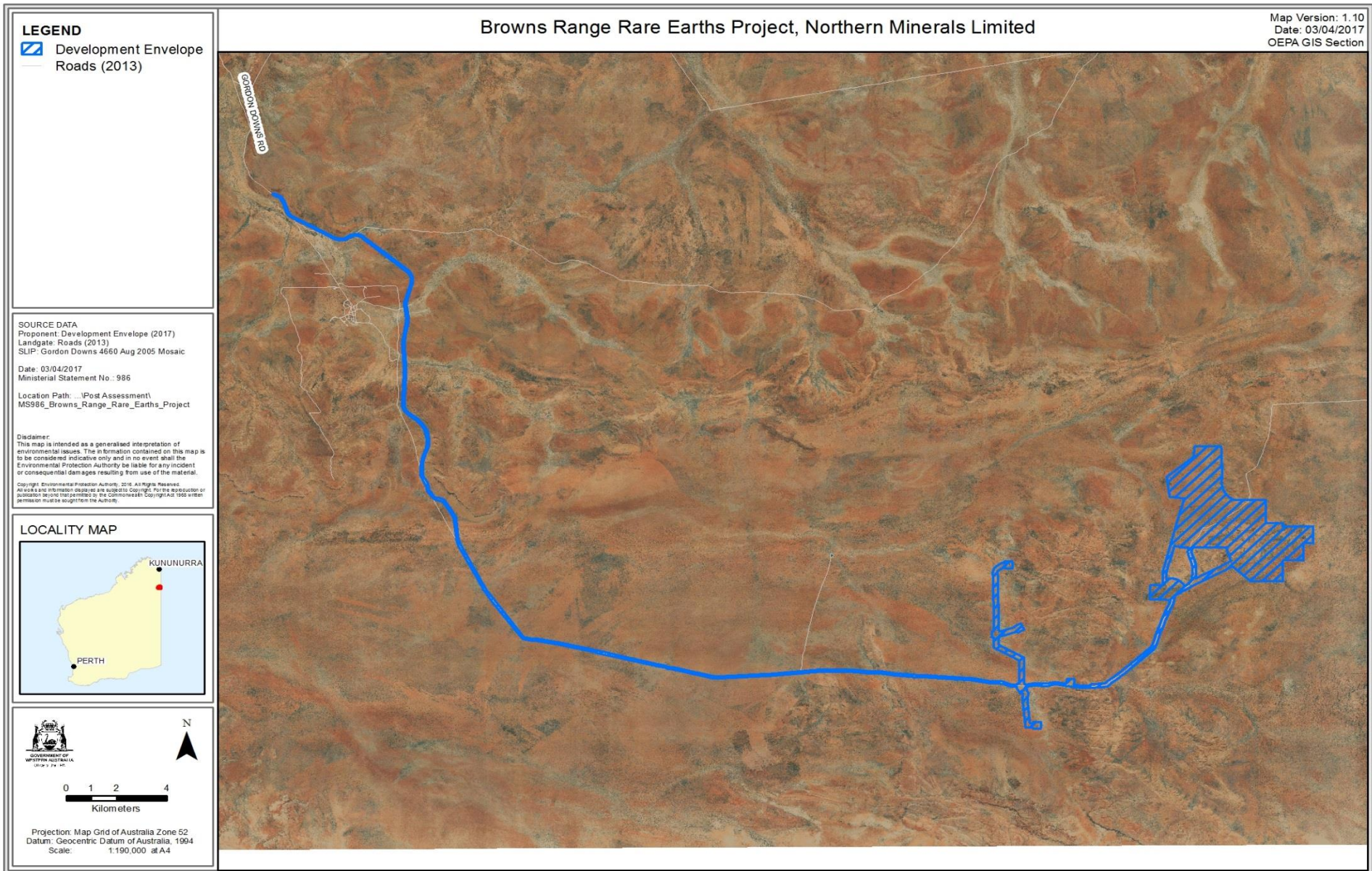


Figure 1 Development envelope of the Browns Range Rare Earths Project

ATTACHMENT 2 TO STATEMENT 986

NOTICE OF CHANGE TO A PROPOSAL

(section 45C of the *Environmental Protection Act 1986*)

BROWNS RANGE RARE EARTH PROJECT

The following changes to the proposal are approved pursuant to section 45C of the *Environmental Protection Act 1986*:

- Installation and operation of an Ore Sorting Circuit, resulting in higher radionuclide concentrations in sorted ore, intermediate process streams and the long-term storage of low-level radioactive waste (tailings).



Dr Tom Hatton
CHAIRMAN

Environmental Protection Authority
under delegated authority

4 September 2020

Attachment 3 to Ministerial Statement 986

Amendment to proposal approved under section 45C of the
Environmental Protection Act 1986

This Attachment replaces Schedules 1 and 2 as well as Attachments 1 and 2 of Ministerial Statement 986

Proposal: Browns Range Rare Earths Project

Proponent: Northern Minerals Limited

Changes:

- Increase the disturbance footprint from 711 ha to 771 ha (8.4% increase), predominantly for the inclusion of renewable energy infrastructure, and an increase in the development envelope from 2,590 ha to 4,384 ha (70% increase), predominantly for the expansion and relocation of the borefield.
- Realignment of the development envelope to reflect changes to the alignment of the access road, inclusion of associated borrow pits, relocation and expansion of the borefield, and to account for changes to drainage infrastructure.

Table 1: Summary of the proposal

Proposal title	Browns Range Rare Earths Project
Short description	A rare earth elements (REE) mine and ore processing facility at Browns Range, approximately 160 (km) southeast of Halls Creek in the Shire of Halls Creek.

Table 2: Location and authorised extent of physical and operational elements

Element	Location	Previously authorised extent	Authorised extent
Physical elements			
Mine pits and underground operations, infrastructure area, including an ore sorting circuit, and haul road.	Figure 1- 4	Clearing of not more than 711 ha of vegetation within the development envelope of 2,590 ha.	Clearing of not more than 771 ha of vegetation within the development envelope of 4,384 ha.

Note: Text in **bold** in Table 2 indicates a change to the proposal.

Table 3: Abbreviations and definitions

Acronym or Abbreviation	Definition of Term
CEO	The Chief Executive Officer of the Department of the Public Service of the State responsible for administration of section 48 of the <i>Environmental Protection Act 1986</i> , or their delegate.
EPA	Environmental Protection Authority
EP Act	<i>Environmental Protection Act 1986</i>
ha	Hectare

Figures (attached)

Figure 1: Browns Range Rare Earths Mine Project Development Envelope

Figure 2: Browns Range Rare Earths Mine Access Road (1) Development Envelope and Indicative Disturbance Footprint

Figure 3: Browns Range Rare Earths Mine Access Road (2) Development Envelope and Indicative Disturbance Footprint

Figure 4: Browns Range Rare Earths Borefield and Mine Area Development Envelope and Indicative Disturbance Footprint

All co-ordinates are in metres, listed in Map Grid of Australia Zone 51 (MGA Zone 51), datum of Geocentric Datum of Australia 2020 (GDA2020).

Spatial data depicting the figures are held by the Department of Water and Environmental Regulation. Record no. DWER-801164602-335019.

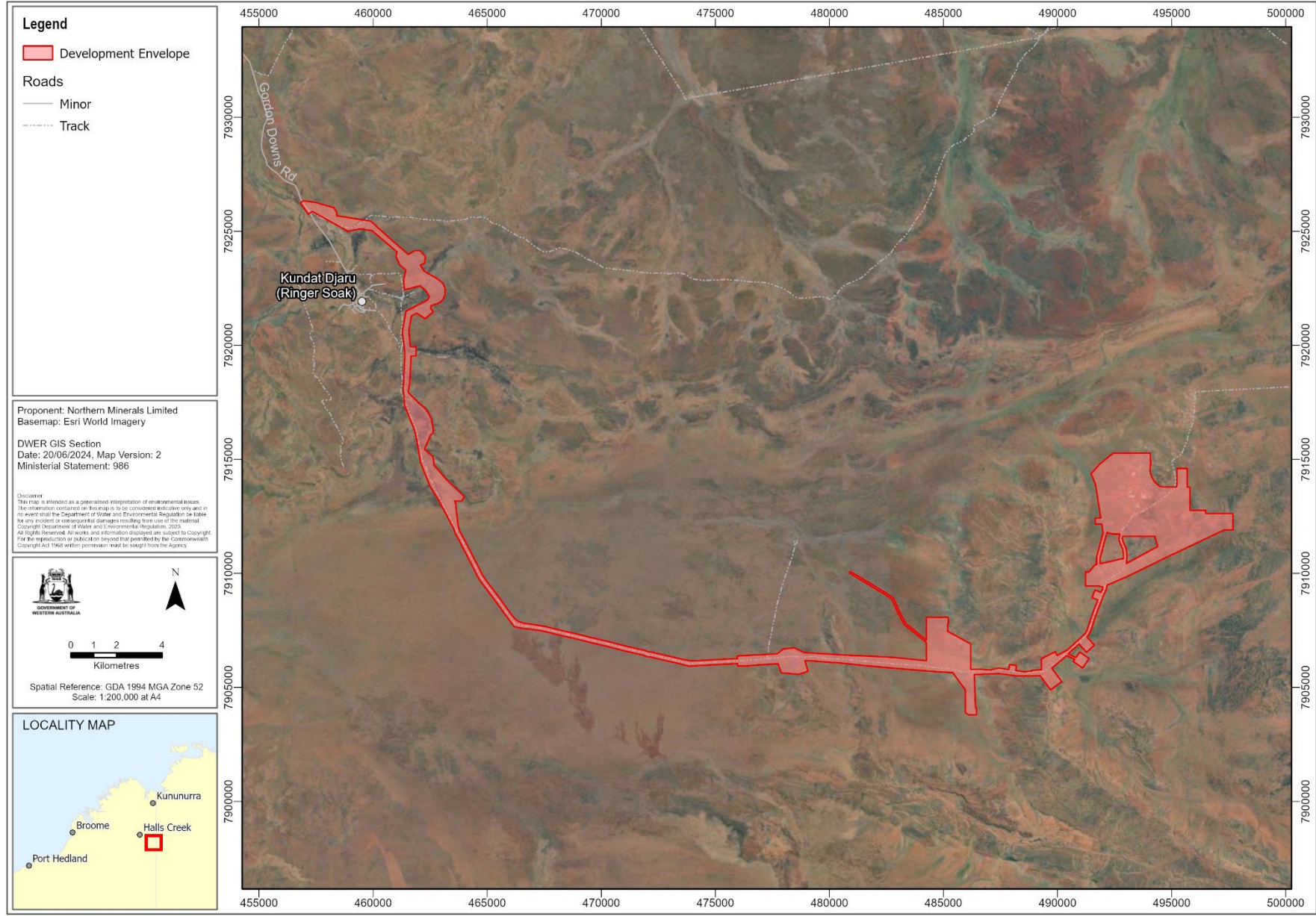


Ms Lee McIntosh

DEPUTY CHAIR

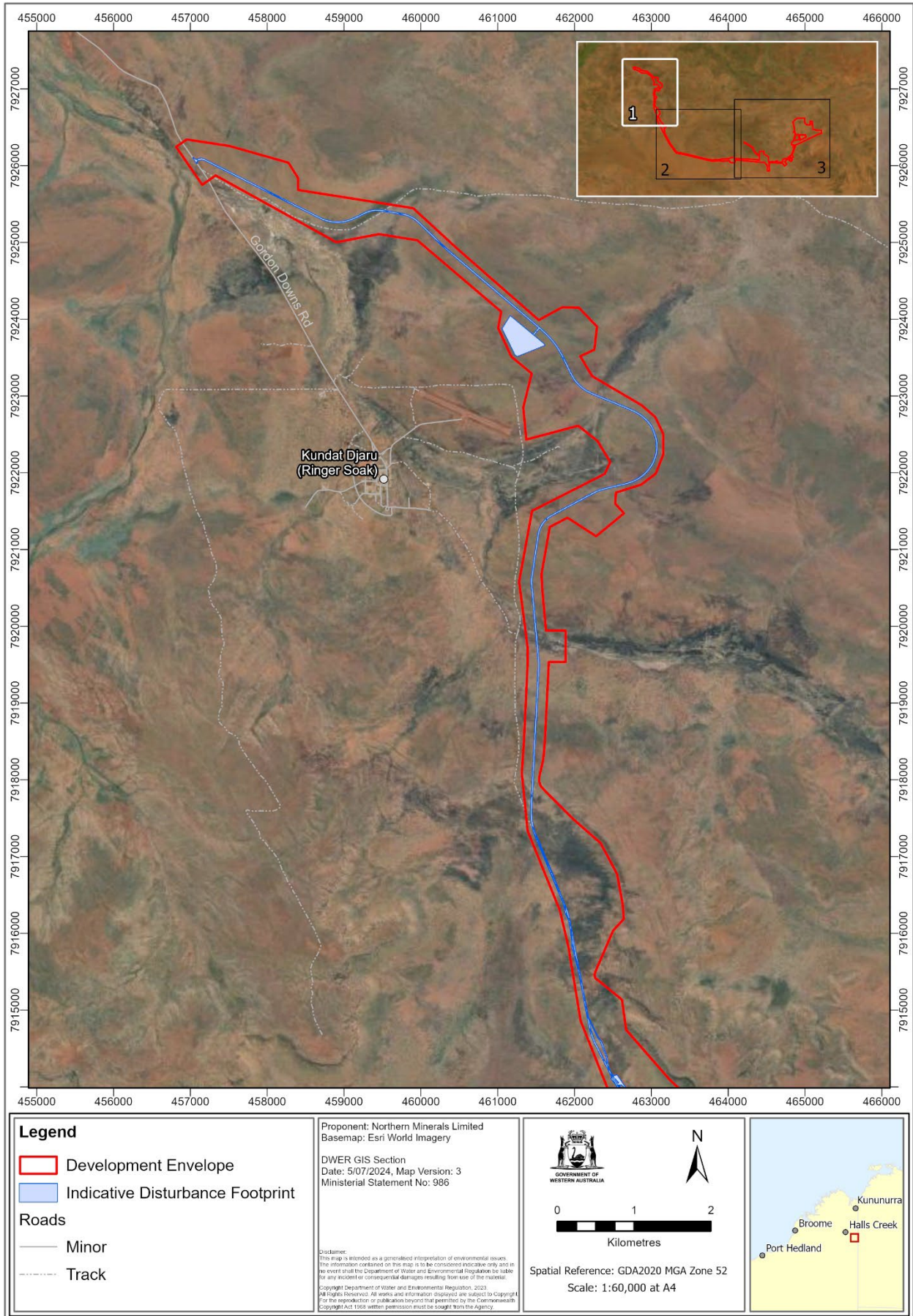
Environmental Protection Authority under delegated authority

Approval date: 26 August 2024



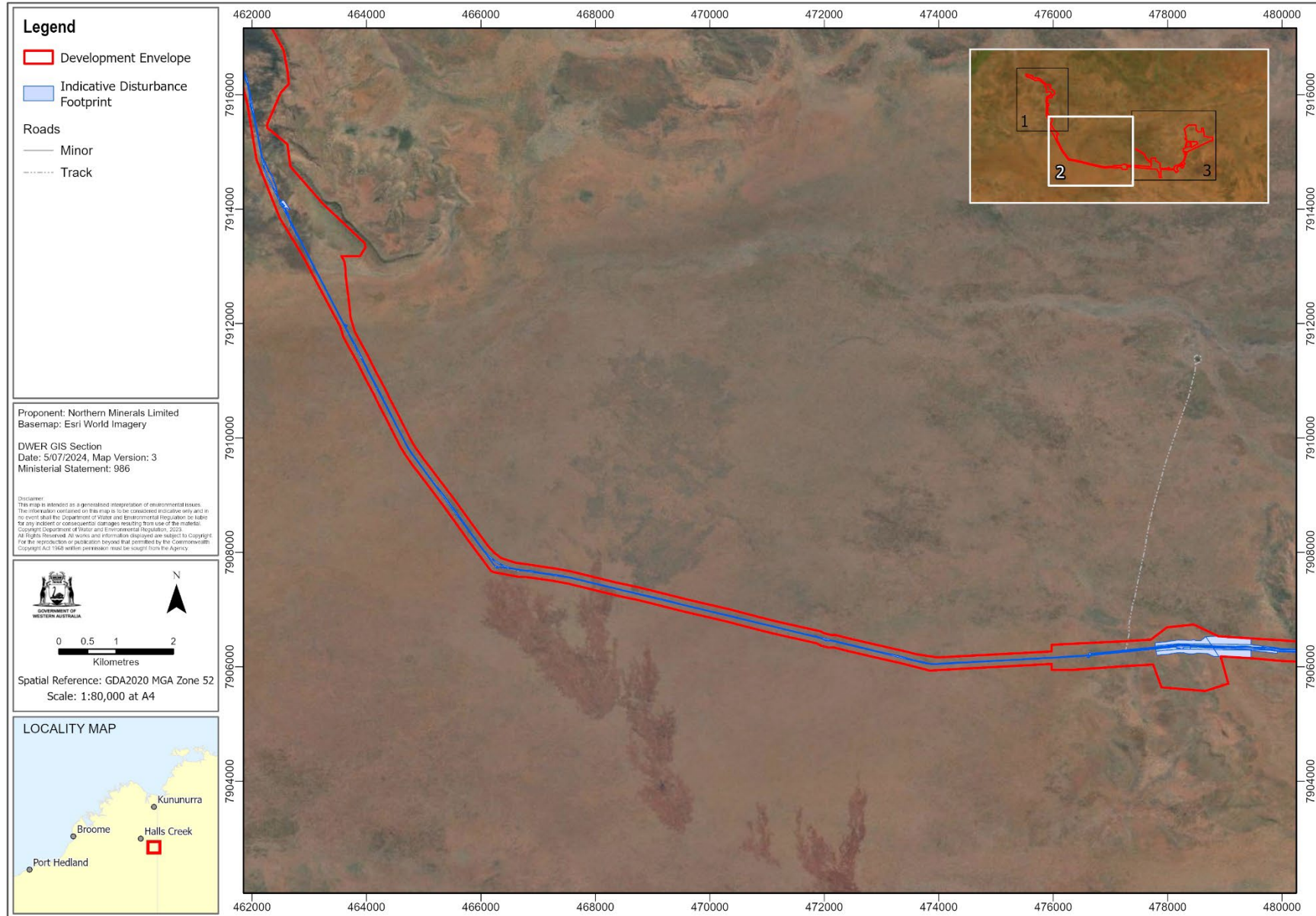
Path: S:\Projects\EA\928\2013_0000184379_BrownsRange\20040612_APP_0025063_ATT_IncreaseDevelopmentEnvelope\ArcGIS_1\0\2013_0000184379_BrownsRange\2013_0000184379_BrownsRange.aprx

Figure 1: Browns Range Rare Earths Project Development Envelope



Path: S:\Projects\EIAs\381\2013_0000184379_BrownsRange\5_PostAssessment\20240612_APP_0025663_Att3_IncreaseDevelopmentEnvelope\ArcGIS_Pro\2013_0000184379_BrownsRange\2013_0000184379_BrownsRange.aprx

Figure 2: Browns Range Rare Earths Mine Access Road (1) Development Envelope and Indicative Disturbance Footprint



Path: S:\Projects\EA\38\2013_0000184370_BrownsRange\5_DealAssessment\20240612_APP_0025963_AIC_IncreaseDevelopmentEnvelope\ArcGIS_Proj\2013_0000184370_BrownsRange\2013_0000184370_BrownsRange.aprx

Figure 3: Browns Range Rare Earths Mine Access Road (2) Development Envelope and Indicative Disturbance Footprint

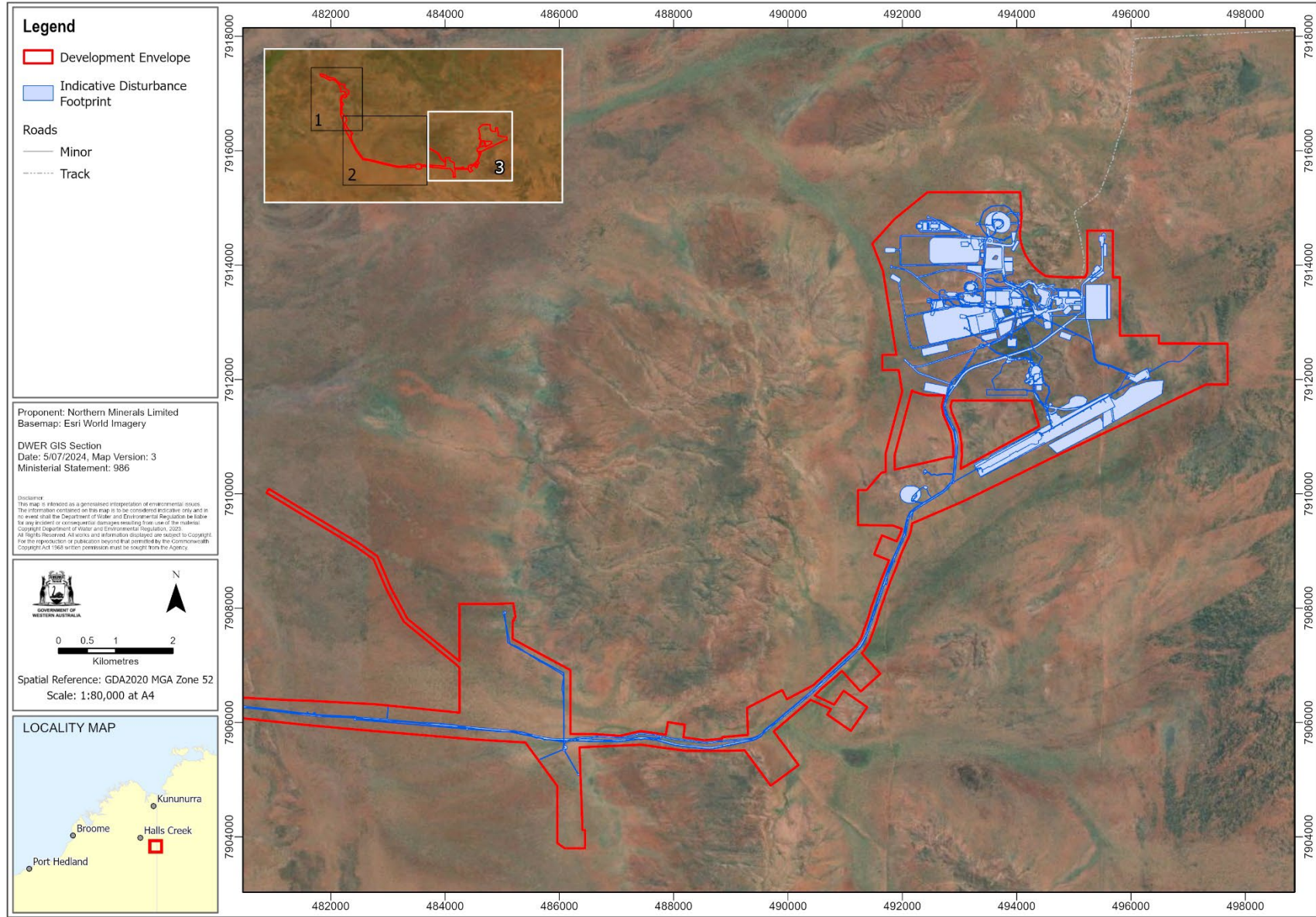


Figure 4: Browns Range Rare Earths Borefield and Mine Area Development Envelope and Indicative Disturbance Footprint

Attachment 4 to Ministerial Statement 986

Amendment to proposal approved under section 45C of the
Environmental Protection Act 1986

This Attachment replaces Schedules 1 and 2 as well as Attachments 1, 2, and 3 of Ministerial Statement 986

Proposal: Browns Range Rare Earths Project

Proponent: Northern Minerals Limited

Changes:

- Inclusion of an alternative access road
- Increase in the development envelope from 4,384 ha to 4,753 ha (8.4% increase)
- Increase in the disturbance footprint from 771 ha to 841 ha (9.1% increase)

Table 1: Summary of the proposal

Proposal title	Browns Range Rare Earths Project
Short description	A rare earth elements (REE) mine and ore processing facility at Browns Range, approximately 160 km southeast of Halls Creek in the Shire of Halls Creek.

Table 2: Location and authorised extent of physical and operational elements

Element	Location	Previously authorised extent	Authorised extent
Physical elements			
Mine pits and underground operations, infrastructure area, including an ore sorting circuit, and haul and access road.	Figure 1-4	Clearing of not more than 771 ha of vegetation within the development envelope of 4,384 ha.	Clearing of not more than 841 ha of vegetation within the development envelope of 4,753 ha.

Note: Text in **bold** in Table 2 indicates a change to the proposal.

Table 3: Abbreviations

Abbreviation	Term
CEO	Chief Executive Officer
EPA	Environmental Protection Authority

Abbreviation	Term
EP Act	<i>Environmental Protection Act 1986</i>
ha	hectare
km	kilometre

Figures (attached)

Figure 1: Browns Range Rare Earths Mine Project Development Envelope.

Figure 2: Browns Range Rare Earths Mine Haul Road (1) Development Envelope and Indicative Disturbance Footprint.

Figure 3: Browns Range Rare Earths Mine Haul Road (2) Development Envelope and Indicative Disturbance Footprint.

Figure 4: Browns Range Rare Earths Borefield and Mine Area Development Envelope and Indicative Disturbance Footprint.

All co-ordinates are in metres, listed in Map Grid of Australia Zone 52 (MGA Zone 52), datum of Geocentric Datum of Australia 2020 (GDA2020).

Spatial data depicting the figures are held by the Department of Water and Environmental Regulation. Record no. DWER-801164602-335019.



Darren Walsh

CHAIR

Environmental Protection Authority

For the Minister for Environment under Notice of Delegation under section 18 of the *Environmental Protection Act 1986*

Approval date: 24 April 2026

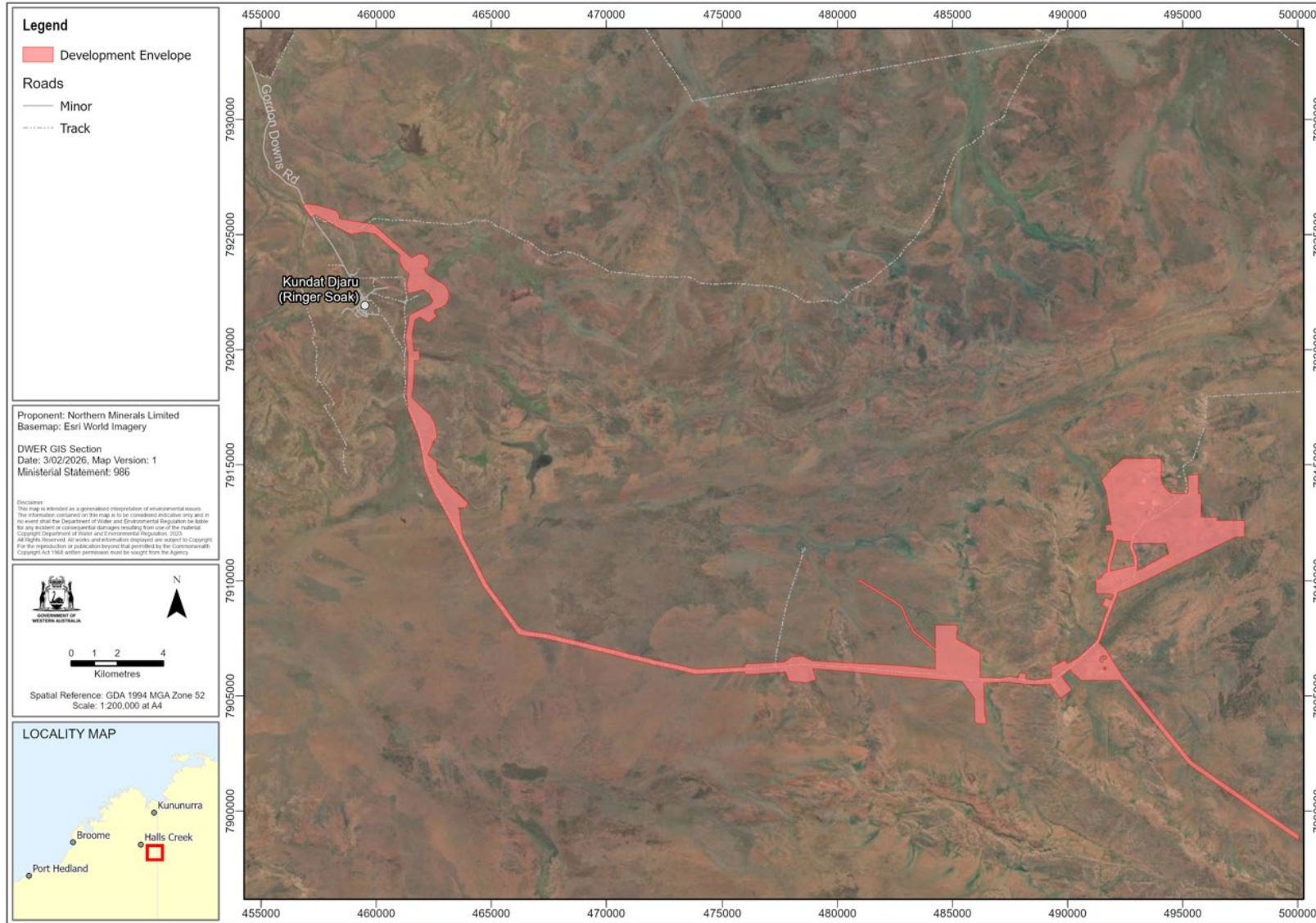


Figure 1: Browns Range Rare Earths Mine Project Development Envelope

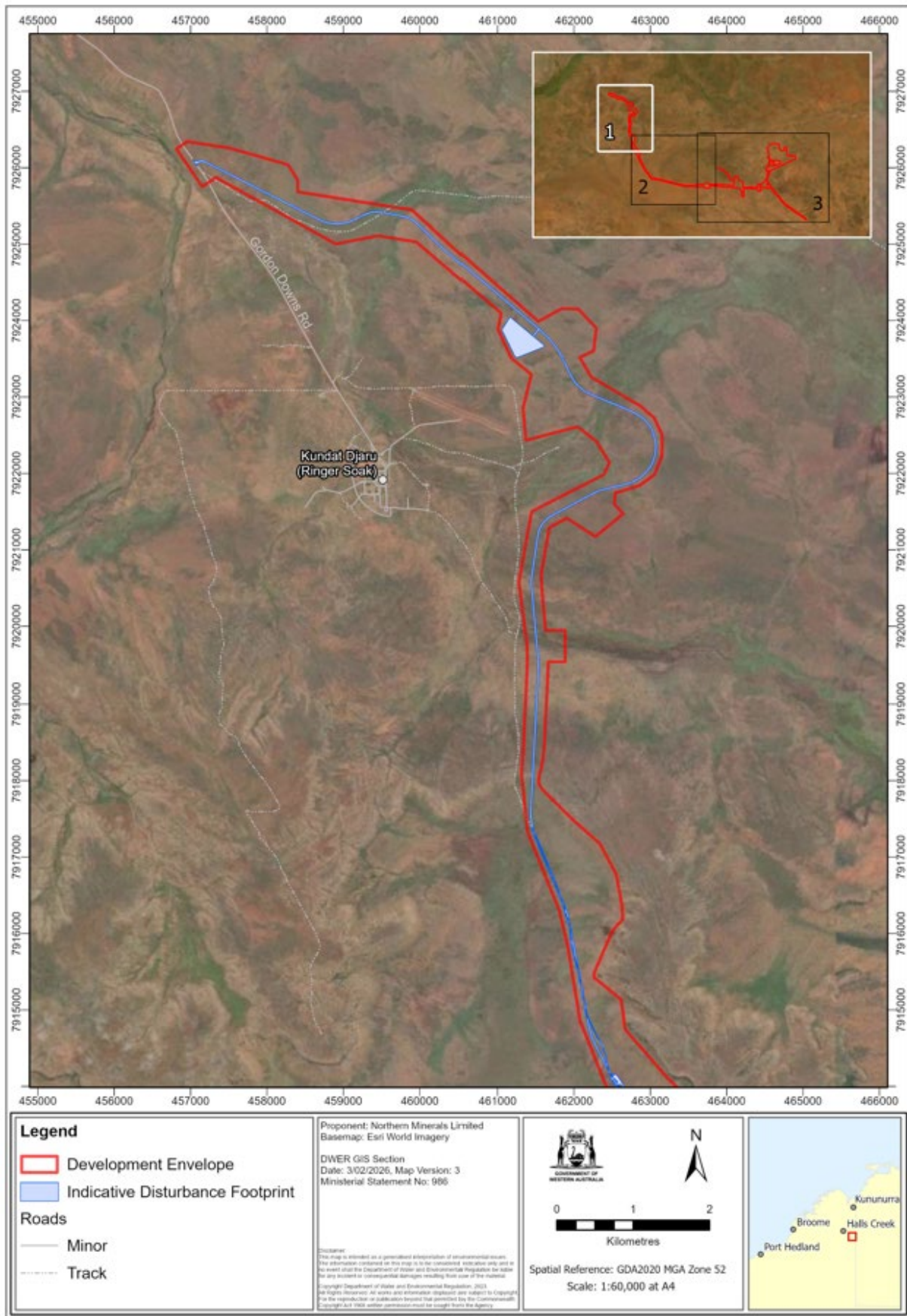


Figure 2: Browns Range Rare Earths Mine Haul Road (1) Development Envelope and Indicative Disturbance Footprint

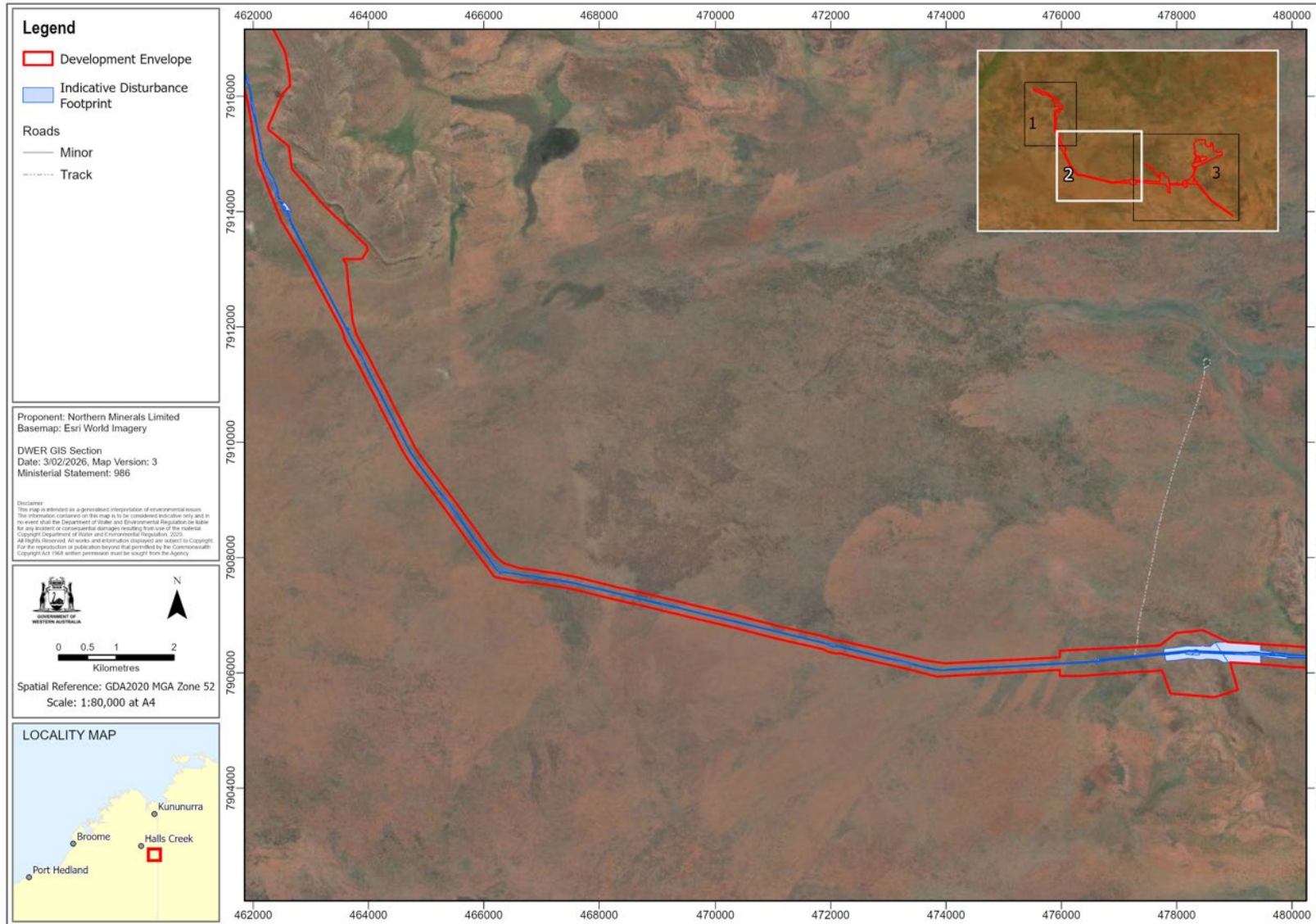


Figure 3: Browns Range Rare Earths Mine Haul Road (2) Development Envelope and Indicative Disturbance Footprint

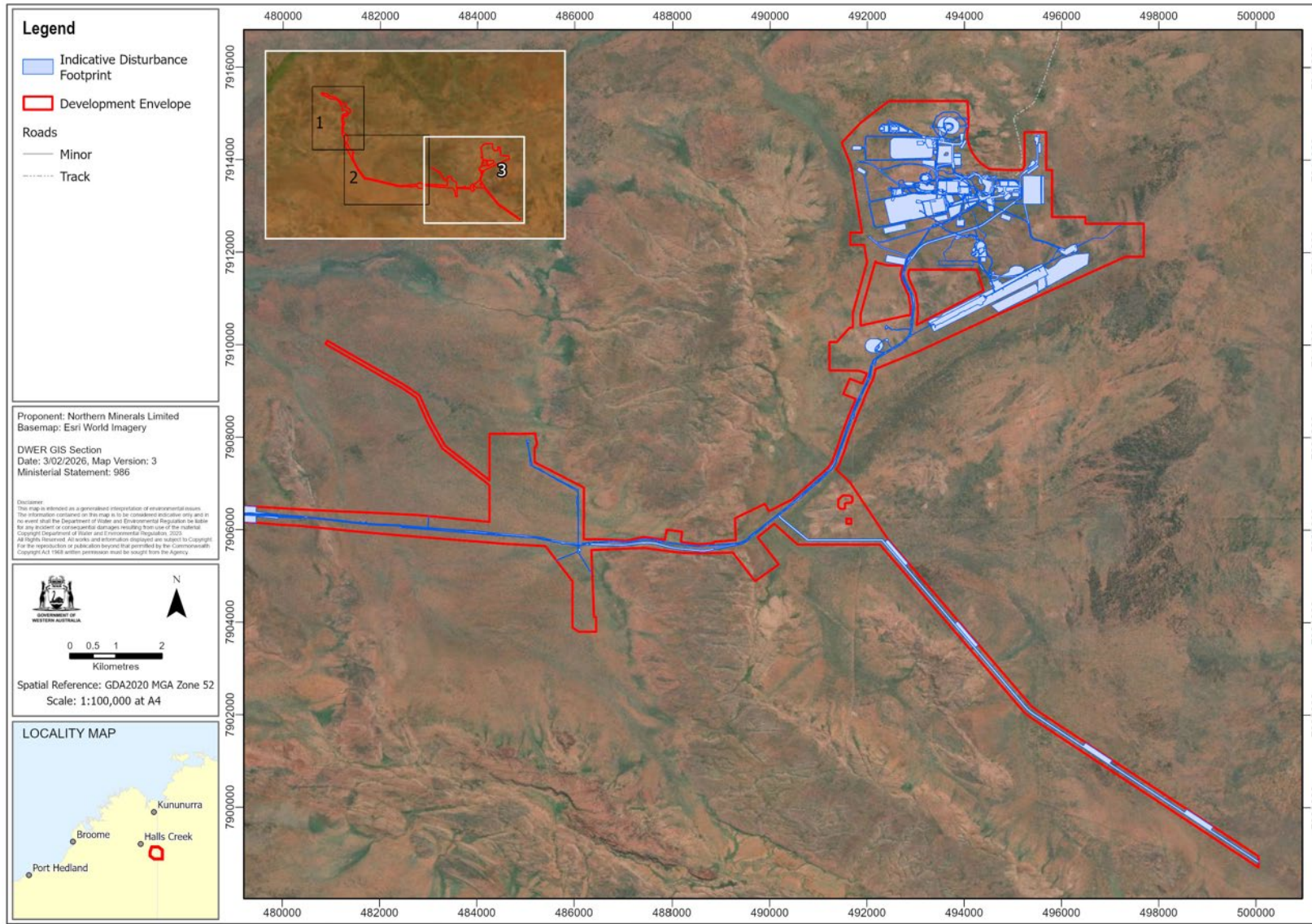


Figure 4: Browns Range Rare Earths Borefield and Mine Area Development Envelope and Indicative Disturbance Footprint