

STATUS OF THIS DOCUMENT

This document has been produced by the Office of the Appeals Convenor as an electronic version of the original Statement for the proposal listed below as signed by the Minister and held by this Office. Whilst every effort is made to ensure its accuracy, no warranty is given as to the accuracy or completeness of this document. The State of Western Australia and its agents and employees disclaim liability, whether in negligence or otherwise, for any loss or damage resulting from reliance on the accuracy or completeness of this document. Copyright in this document is reserved to the Crown in right of the State of Western Australia. Reproduction except in accordance with copyright law is prohibited.

Published on: 24 September 2010

Statement No. 839

**STATEMENT THAT A PROPOSAL MAY BE IMPLEMENTED
(PURSUANT TO THE PROVISIONS OF THE
ENVIRONMENTAL PROTECTION ACT 1986)**

**TROPICANA GOLD PROJECT,
SHIRE OF MENZIES, SHIRE OF LAVERTON AND
THE CITY OF KALGOORLIE – BOULDER**

- Proposal:** The proposal is the construction and operation of an open-cut gold mine and associated infrastructure, located approximately 330 km east northeast of Kalgoorlie and 200 km east of Laverton. The proposal is further documented in schedule 1 of this statement.
- Proponent:** Tropicana Joint Venture (AngloGold Ashanti Australia Limited and Independence Group NL)
- Proponent Address:** Level 13 St Martin's Tower
44 St Georges Terrace
PERTH WA 6000
- Assessment Number:** 1745
- Report of the Environmental Protection Authority:** 1361

The proposal referred to in the above report of the Environmental Protection Authority may be implemented. The implementation of that proposal is subject to the following conditions and procedures:

1 Proposal Implementation

- 1-1 The proponent shall implement the proposal as assessed by the Environmental Protection Authority and described in Schedule 1 of this statement subject to the condition and procedures of this statement.

2 Proponent Nomination and Contact Details

- 2-1 The proponent for the time being nominated by the Minister for Environment under sections 38(6) or 38(7) of the *Environmental Protection Act 1986* is responsible for the implementation of the proposal.
- 2-2 The proponent shall notify the Chief Executive Officer of the Office of the Environmental Protection Authority of any change of the name and address of the proponent for the serving of notices or other correspondence within 30 days of such change.

3 Time Limit of Authorisation

- 3-1 The authorisation to implement the proposal provided for in this statement shall lapse and be void five years after the date of this statement if the proposal to which this statement relates is not substantially commenced.
- 3-2 The proponent shall provide the Chief Executive Officer of the Office of the Environmental Protection Authority with written evidence which demonstrates that the proposal has substantially commenced on or before the expiration of five years from the date of this statement.

4 Compliance Reporting

- 4-1 The proponent shall prepare and maintain a compliance assessment plan to the satisfaction of the Chief Executive Officer of the Office of the Environmental Protection Authority.
- 4-2 The proponent shall submit to the Chief Executive Officer of the Office of the Environmental Protection Authority, the compliance assessment plan required by condition 4-1 at least 6 months prior to the first compliance report required by condition 4-6, or prior to ground disturbing activity, whichever is sooner.

The compliance assessment plan shall indicate:

- 1 the frequency of compliance reporting;
 - 2 the approach and timing of compliance assessments;
 - 3 the retention of compliance assessments;
 - 4 the method of reporting of potential non-compliances and corrective actions taken;
 - 5 the table of contents of compliance reports; and
 - 6 public availability of compliance reports.
- 4-3 The proponent shall assess compliance with conditions in accordance with the compliance assessment plan required by condition 4-1.

- 4-4 The proponent shall retain reports of all compliance assessments described in the compliance assessment plan required by condition 4-1 and shall make those reports available when requested by the Chief Executive Officer of the Office of the Environmental Protection Authority.
- 4-5 The proponent shall advise the Chief Executive Officer of the Office of the Environmental Protection Authority of any potential non-compliance within seven days of that non-compliance being known.
- 4-6 The proponent shall submit to the Chief Executive Officer of the Office of the Environmental Protection Authority the first compliance assessment report fifteen months from the date of issue of this Statement addressing the twelve month period from the date of issue of this Statement and then annually from the date of submission of the first compliance assessment report.

The compliance assessment report shall:

- 1 be endorsed by the proponent's Chief Executive Officer or a person delegated to sign on the Chief Executive Officer's behalf;
- 2 include a statement as to whether the proponent has complied with the conditions;
- 3 identify all potential non-compliances and describe corrective and preventative actions taken;
- 4 be made publicly available in accordance with the approved compliance assessment plan; and
- 5 indicate any proposed changes to the compliance assessment plan required by condition 4-1.

5 Flora and Vegetation

- 5-1 The proponent shall ensure that there is no loss of plants of Declared Rare Flora species due to construction or operational activities unless otherwise approved.
- 5-2 The proponent shall undertake monitoring of the condition and abundance of vegetation and flora at reference and potential impact sites in accordance with the "Tropicana Gold Project Environmental Monitoring Strategy, Version: 1.0, Author: B Bastow, Issue Date: 18 February 2010" or subsequent revisions approved by the Chief Executive Officer of the Office of the Environmental Protection Authority. This monitoring is to be carried out to the requirements of the Chief Executive Officer of the Office of the Environmental Protection Authority on advice of the Department of Environment and Conservation.
- 5-3 Should the potential impact sites show a 25 per cent (or greater) decline in cover or productivity as compared to the reference sites, the proponent shall provide a report to

the Chief Executive Officer of the Office of the Environmental Protection Authority within 21 days of the decline being identified which:

1. describes the decline;
2. provides information which allows determination of the likely root cause of the decline; and
3. if likely to be caused by activities undertaken in implementing the proposal, states the actions and associated timelines proposed to remediate the decline.

5-4 The proponent shall, on approval of the Chief Executive Officer of the Office of the Environmental Protection Authority, implement the actions identified in 5-3 (3) and continue to implement such actions until the Chief Executive Officer of the Office of the Environmental Protection Authority determines that the remedial actions may cease.

5-5 The proponent shall make the Environmental Monitoring Strategy referred to in 5-2 publically available in a manner approved by the Chief Executive Officer of the Office of the Environmental Protection Authority.

6 Threatened Species

6-1 The proponent shall implement the “Tropicana Gold Project Threatened Species and Communities Management Strategy, Version 2.0, Author: B Bastow, Issue Date: July 2009”, or subsequent revisions approved by the Chief Executive Officer of the Office of the Environmental Protection Authority. The objective of this strategy is to minimise adverse impacts to conservation significant species and communities.

6-2 The proponent shall review and revise the Tropicana Gold Project Threatened Species and Communities Management Strategy referred to in 6-1, in consultation with the Department of Environment and Conservation, every three years to ensure that the mitigation and management techniques remain valid and incorporate any relevant new research.

6-3 The proponent shall make the Tropicana Gold Project Threatened Species and Communities Management Strategy referred to in 6-1 publically available in a manner approved by the Chief Executive Officer of the Office of the Environmental Protection Authority.

7 Trapped Fauna

7-1 The proponent shall ensure that open trenches associated with construction of the water pipeline and the communications link are cleared of trapped fauna by fauna-rescue personnel at least twice daily. Details of all fauna recovered shall be recorded. The first daily clearing shall take place no later than three hours after sunrise and shall be repeated between the hours of 3:00 pm and 6:00 pm.

The open trenches shall also be cleared, and fauna details recorded, by fauna-rescue personnel no more than one hour prior to backfilling of trenches.

Note: “fauna-rescue personnel” means employees of the proponent whose responsibility it is to walk the open trench to recover and record fauna found within the trench.

- 7-2 The fauna-rescue personnel shall be trained in the following, through a program that meets the requirements of the Chief Executive Officer of the Office of the Environmental Protection Authority:
1. fauna identification, capture and handling (including venomous snakes);
 2. identification of tracks, scats, burrows and nests of conservation-significant species;
 3. fauna vouchering (of deceased animals);
 4. assessing injured fauna for suitability for release, rehabilitation or euthanasia;
 5. familiarity with the ecology of the species which may be encountered in order to be able to appropriately translocate fauna encountered; and
 6. performing euthanasia.
- 7-3 Open trench lengths shall not exceed a length capable of being inspected and cleared by the fauna-clearing personnel within the required times as set out in condition 7-1.
- 7-4 Ramps providing egress points and/or fauna refuges providing suitable shelter from the sun and predators for trapped fauna are to be placed in the trench at intervals not exceeding 50 metres.
- 7-5 The proponent shall produce a report on fauna management within the water pipeline lateral easement and communication corridor at the completion of pipeline and communication link construction. The report shall include the following:
1. details of all fauna inspections;
 2. the number of fauna cleared from trenches;
 3. fauna mortalities; and
 4. all actions taken.

The report shall be provided to the Chief Executive Officer of the Office of the Environmental Protection Authority no later than 21 days after the completion of pipeline installation, and shall be made publicly available in a manner approved by the Chief Executive Officer of the Office of the Environmental Protection Authority.

8 Groundwater and Surface Water Quality

- 8-1 The proponent shall ensure that run-off and/or seepage from the tailings storage facility and waste material landforms does not impact the quality of surface water or groundwater within or adjacent to the proposal area to exceed the trigger values for a slightly to moderately disturbed ecosystem provided for in Table 3.4.2 of Chapter 3 of the Australian and New Zealand Environment and Conservation Council and Agriculture and Resource Management Council of Australia and New Zealand 2000, *Australian Water Quality Guidelines for Fresh and Marine Waters* and its updates, taking into consideration natural background water quality.

- 8-2 The proponent shall monitor the quality of surface water and groundwater upstream and downstream of the tailings storage facility and waste material landforms to ensure that the requirements of condition 8-1 are met. This monitoring is to be carried out using methods consistent with Australian and New Zealand Environment and Conservation Council and Agriculture and Resource Management Council of Australia and New Zealand 2000, *Australian Guidelines for Water Quality Monitoring and Reporting* (and its updates) and to the satisfaction of the Chief Executive Officer of the Office of the Environmental Protection Authority.
- 8-3 The proponent shall commence the water quality monitoring required by 8-2 before ground disturbing activities in order to collect baseline data.
- 8-4 The proponent shall submit annually the results of monitoring required by condition 8-2 to the Chief Executive Officer of the Office of the Environmental Protection Authority.
- 8-5 In the event that monitoring required by condition 8-2 indicates that the requirements of condition 8-1 are not being met, the proponent shall:
1. report such findings to the Chief Executive Officer of the Office of the Environmental Protection Authority within 21 days of the decline in water quality being identified;
 2. provide evidence which allows determination of the root cause of the decline in water quality; and
 3. if determined to be a result of activities undertaken in implementing the proposal, state the actions and associated timelines proposed to be taken to remediate the water quality.
- 8-6 The proponent shall, on approval of the Chief Executive Officer of the Office of the Environmental Protection Authority, implement the actions identified in 8-5 (3) and continue to implement such actions until the Chief Executive Officer of the Office of the Environmental Protection Authority determines that the remedial actions may cease.
- 8-7 The proponent shall make the monitoring reports required by condition 8-2 publicly available in a manner approved by the Chief Executive Officer of the Office of the Environmental Protection Authority.

9 Rehabilitation

- 9-1 The proponent shall undertake progressive rehabilitation over the life of the proposal to achieve the following outcomes:
1. The waste material landforms and tailings storage facility shall be non-polluting and shall be constructed so that their stability, surface drainage, resistance to erosion and ability to support local native vegetation are similar to undisturbed natural analogue landforms as demonstrated by Ecosystem Function Analysis or

other methodology acceptable to the Chief Executive Officer of the Office of the Environmental Protection Authority.

2. Waste material landforms, tailings storage facility and other areas disturbed through implementation of the proposal (excluding mine pits), shall be progressively rehabilitated with vegetation composed of native plant species of local provenance (defined as seed or plant material collected within the Great Victoria Desert Bioregions 1 and 2).
3. The percentage cover and species diversity of living self sustaining native vegetation in all rehabilitation areas shall be comparable to that of undisturbed natural analogue sites as demonstrated by Ecosystem Function Analysis or other methodology acceptable to the Chief Executive Officer of the Office of the Environmental Protection Authority.
4. No new species of weeds (including both declared weeds and environmental weeds) shall establish in the area as a result of the implementation of the proposal.
5. The coverage of weeds (including both declared weeds and environmental weeds) within rehabilitated areas shall be no greater than the average of three reference sites on nearby land, with the reference sites to be chosen in consultation with the Department of Environment and Conservation.

Note: The methodology for Ecosystem Function Analysis is set out in Tongway DJ and Hindley 2004 *Landscape Function Analysis – Procedures for Monitoring and Assessing Landscapes*, Commonwealth Scientific and Industrial Research Organisation Sustainable Ecosystems, Canberra.

- 9-2 Rehabilitation activities shall continue until such time as the requirements of condition 9-1 are met, and are demonstrated by inspections and reports to be met, for a minimum of five years following mine completion to the satisfaction of the Chief Executive Officer of the Office of the Environmental Protection Authority, on advice of the Department of Mines and Petroleum.

10 Final Closure and Decommissioning Plan

- 10-1 At least five years prior to mine completion, the proponent shall prepare and submit a Final Closure and Decommissioning Plan to the requirements of the Chief Executive Officer of the Office of the Environmental Protection Authority, on advice of the Department of Mines and Petroleum.

- 10-2 The Final Closure and Decommissioning Plan shall be prepared consistent with:

1. ANZMEC/MCA 2000, *Strategic Framework for Mine Closure Planning*; and
2. Department of Industry Tourism and Resources 2006 *Mine Closure and Completion* (Leading Practice Sustainable Development Program for the Mining Industry), Commonwealth Government, Canberra;

- 10-3 The Final Closure and Decommissioning Plan shall provide detailed technical information on the following:
1. final closure of all areas disturbed through implementation of the proposal so that they are safe, stable and non-polluting;
 2. decommissioning of all plant and equipment;
 3. disposal of waste materials;
 4. final rehabilitation of waste dumps; tailings storage facilities and other areas (outside the mine pit(s));
 5. management and monitoring following mine completion; and
 6. inventory of all contaminated sites and proposed management.
- 10-4 The proponent shall close, decommission and rehabilitate the proposal in accordance with the approved Final Closure and Decommissioning Plan.
- 10-5 The proponent shall make the Final Closure and Decommissioning Plan required by conditions 10-1 and 10-2 publicly available in a manner approved by the Chief Executive Officer of the Office of the Environmental Protection Authority.

Procedures

1. Where a condition states “on advice of the Department of Environment and Conservation” or “on advice from the Department of Mines and Petroleum”, the Office of the Environmental Protection Authority will obtain that advice and provide that advice to the proponent.
2. The Environmental Protection Authority may seek advice from other agencies or organisations, as required, in order to provide its advice.
3. The proponent is required to apply for a Works Approval and operating Licence for this project under the provisions of Part V of the *Environmental Protection Act 1986*.

Hon Donna Faragher JP MLC
MINISTER FOR ENVIRONMENT; YOUTH

The Proposal (Assessment No. 1745)

General Description

The proposal is to develop and operate an open-cut gold mine with infrastructure and utilities located approximately 330 kilometres (km) east northeast of Kalgoorlie and 200 km east of Laverton. The proposal is described in the following document – *Tropicana Gold Project Public Environmental Review, September 2009*.

Summary Description

A summary of the key proposal characteristics is presented in Table 1.

Table 1: Summary of key proposal characteristics

Element	Description
General	
Project life	Approximately 15 years of mining; total project duration up to 25 years (including post closure monitoring)
Mining and Processing	
Mining rate	Up to 75 million tonnes per annum (ore and waste)
Stripping ratio	8:1
Number of pits	Up to 4
Open pit void/s	Not more than 400 hectares
Maximum length of pit/s	6 kilometres (if pits combine)
Maximum width of pit	1.5 kilometres
Overburden and waste	Not more than 800 million tonnes
Waste landform	Not more than 1,200 hectares. Maximum height 375 mRL. Slope with maximum angle of 15 degrees
Water supply	Up to 7 gigalitres per annum
Dewatering rate	1,000 – 5,000 kilolitres per day
Infrastructure	
Mine access road	Pinjin Option – 370 kilometres (~210 kilometres of road construction)
Communications	Fibre Optic or Microwave via either Pinjin or Tropicana Transline Corridor
Aerodrome	All weather strip 2.4 kilometres long
Main power supply	Onsite power station with an installed capacity of up to 40 megawatts
Water pipeline	Approximately 50 kilometres in length from the borefield (located north northwest of Operational Area) to the process plant.
Tailings Storage Facility	Up to 7 million tonnes per annum; two-cell paddock tailings storage facility with possible in-pit deposition. Maximum height of 372 mRL. Approximately 1330 metres wide by 1850 metres.
Disturbance Areas	
Disturbance area	Not more than 3,440 hectares comprising: <ul style="list-style-type: none"> • operational area – 2,570 hectares. • water supply area – 200 hectares. • infrastructure areas – 670 hectares.

Figures:

Figure 1: Regional location of mine site.

Figure 2: Proposal footprint and conceptual layout of key components.

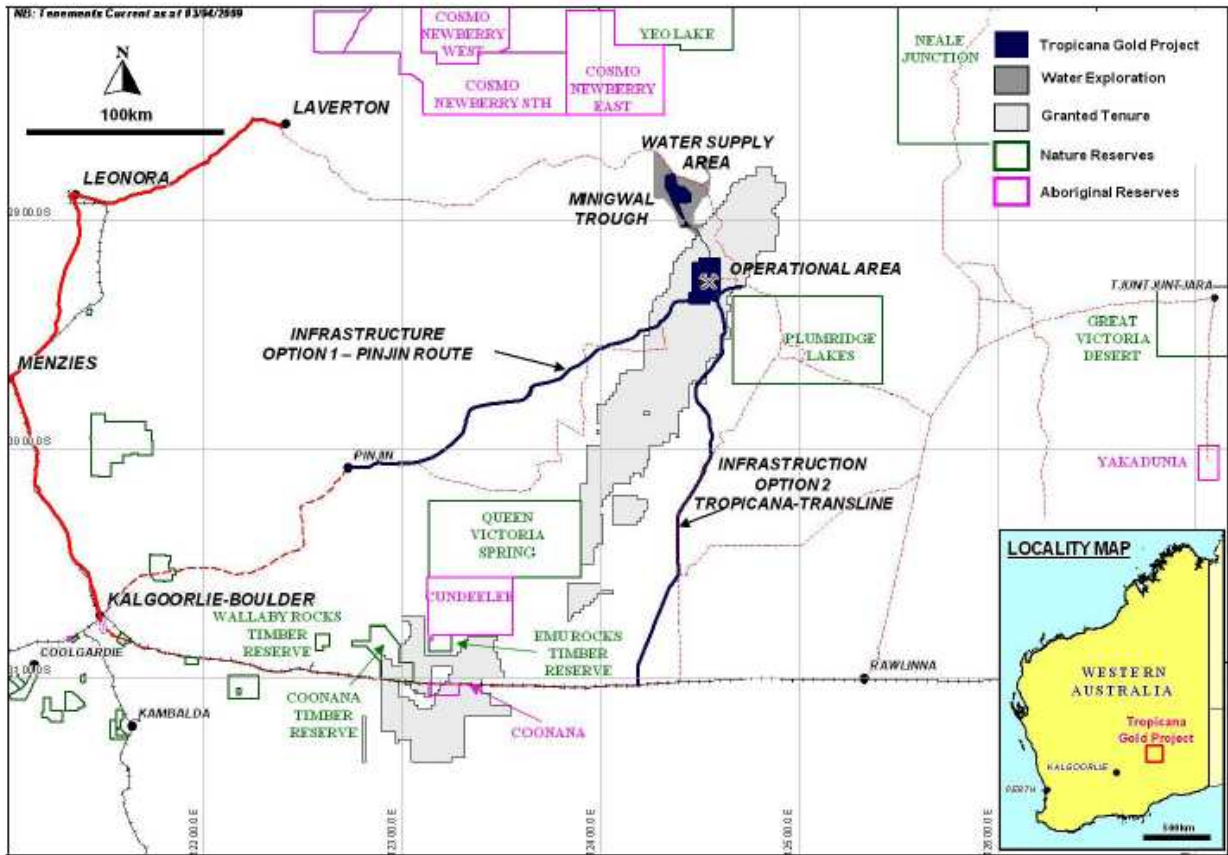


Figure 1: Regional location of mine site

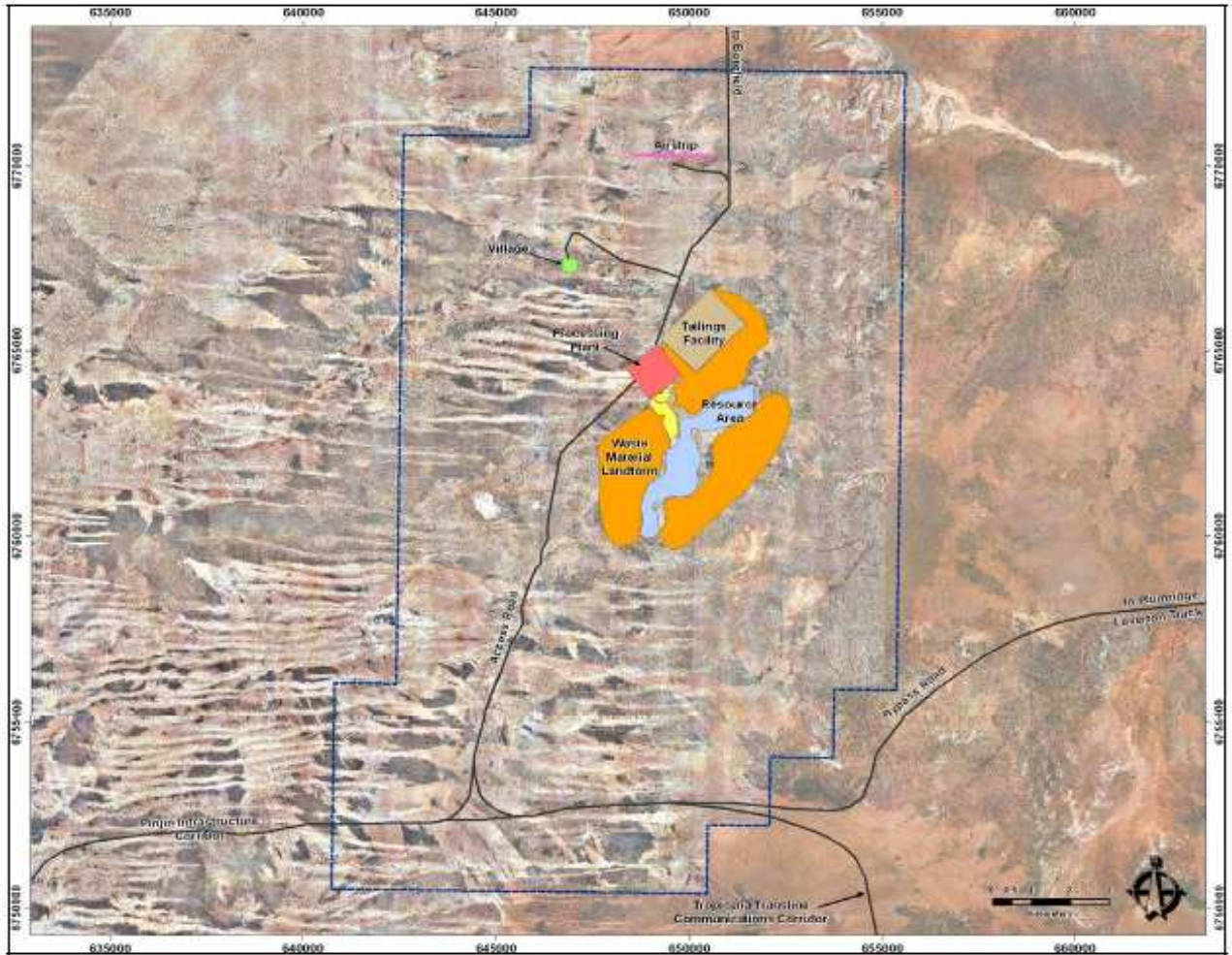


Figure 2: Proposal footprint and conceptual layout of key components

Attachment 1 to Ministerial Statement 839

Change to proposal under s45C of the *Environmental Protection Act 1986*

Proposal: Tropicana Gold Project, Shire of Menzies, Shire of Laverton and the City of Kalgoorlie – Boulder

Proponent: Tropicana Joint Venture (AngloGold Ashanti Australia Limited and Independence Group NL)

Change: Implement a single cell tailings storage facility.

Key Characteristics Table: This table replaces Table 1 in Schedule 1

<u>Element</u>	<u>Description of proposal</u>	<u>Description of approved change to proposal</u>
General		
Project life	Approximately 15 years of mining; total project duration up to 25 years (including post closure monitoring)	Approximately 15 years of mining; total project duration up to 25 years (including post closure monitoring)
Mining and Processing		
Mining rate	Up to 75 mtpa (ore and waste)	Up to 75 mtpa (ore and waste)
Stripping ratio	8:1	8:1
Number of pits	Up to 4	Up to 4
Open pit void/s	Not more than 400 ha	Not more than 400 ha
Maximum length of pit/s	6 km (if pits combine)	6 km (if pits combine)
Maximum width of pit	1.5 km	1.5 km
Overburden and waste	Not more than 800 mt	Not more than 800 mt
Waste landform	Not more than 1,200 hectares. Maximum height 375 mRL. Slope with maximum angle of 15 degrees	Not more than 1,200 hectares. Maximum height 375 mRL. Slope with maximum angle of 15 degrees
Water supply	Up to 7 gl/year	Up to 7 gl/year
Dewatering rate	1,000 – 5,000 kl/day	1,000 – 5,000 kl/day
Infrastructure		
Mine access road	Pinjin Option – 370 km (~210 km of road construction)	Pinjin Option – 370 km (~210 km of road construction)
Communications	Fibre Optic or Microwave via either Pinjin or	Fibre Optic or Microwave via either Pinjin or

	Tropicana Transline Corridor	Tropicana Transline Corridor
Aerodrome	All weather strip 2.4 km long	All weather strip 2.4 km long
Main power supply	Onsite power station with an installed capacity of up to 40 Mw	Onsite power station with an installed capacity of up to 40 Mw
Water pipeline	Approximately 50 km in length from the borefield (located north northwest of Operational Area) to the process plant.	Approximately 50 km in length from the borefield (located north northwest of Operational Area) to the process plant.
Tailings Storage Facility	Up to 7 mtpa; two-cell paddock tailings storage facility with possible in-pit deposition. Maximum height of 372 mRL. Approximately 1330 m wide by 1850 m.	Up to 7 mtpa; single-cell paddock tailings storage facility with possible in-pit deposition. Maximum height of 372 mRL. Maximum 292ha footprint.
Disturbance Areas		
Disturbance Area	Not more than 3,440 ha comprising: <ul style="list-style-type: none"> operational area – 2,570 ha. water supply area – 200 ha. infrastructure areas – 670 ha. 	Not more than 3,440 ha comprising: <ul style="list-style-type: none"> operational area – 2,570 ha. water supply area – 200 ha. infrastructure areas – 670 ha.

Note: Text in **bold** in the Key Characteristics Table, indicates change/s to the proposal.

Abbreviations

Mtpa	Million tons per annum	kl/day	Kilo litres per day
Mt	Million tons	gl/year	Giga Litres per year
mAHD	metres Australian Height Datum	m/sec	Metres per second
ha	Hectares	ML	Mega Litres
Mw	Megawatts	kl	Kilo litres

Note there are no change(s) to figure 1 or 2 in schedule 1.

Dr Paul Vogel
CHAIRMAN
Environmental Protection Authority
under delegated authority

Approval date: 19 November 2012

Attachment 2 to Ministerial Statement 839

Change to proposal approved under section 45C of the *Environmental Protection Act 1986*

This Attachment replaces Schedule 1 and Attachment 1 of Ministerial Statement 839

Proposal: Tropicana Gold Project, Shire of Menzies, Shire of Laverton and the City of Kalgoorlie – Boulder

Proponent: Tropicana Joint Venture (AngloGold Ashanti Australia Limited and Independence Group NL)

The Proposal (Assessment No. 1745)

General Description

The proposal is to develop and operate an open-cut gold mine with infrastructure and utilities located approximately 330 kilometres (km) east northeast of Kalgoorlie and 200 km east of Laverton.

Changes:

- remove reference to 'Mining rate'; 'Stripping ratio', 'Communications', and 'Main power supply';
- increase water supply from 'Up to 7 gl/year' to 'Up to 9 GI per year';
- increase the 'Disturbance Area' for the water supply area from 200 to 300 hectares; and
- update the figures and provide a table of coordinates defining development envelopes (Table 2).

Table 1: Key Characteristics Table

Element	Description of proposal	Description of approved change to proposal
General		
Project life	Approximately 15 years of mining; total project duration up to 25 years (including post closure monitoring)	Approximately 15 years of mining; total project duration up to 25 years (including post closure monitoring)
Mining and Processing		
Mining rate	Up to 75 mtpa (ore and waste)	Removed as not a significant key characteristic relevant to the environment.
Stripping ratio	8:1	Removed as not a significant key characteristic relevant to the environment.
Number of pits	Up to 4	Up to 4
Open pit void/s	Not more than 400 ha	Not more than 400 ha

Element	Description of proposal	Description of approved change to proposal
Maximum length of pit/s	6 km (if pits combine)	6 km (if pits combine)
Maximum width of pit	1.5 km	1.5 km
Overburden and waste	Not more than 800 mt	Not more than 800 mt
Waste landform	Not more than 1,200 hectares. Maximum height 375 mRL. Slope with maximum angle of 15 degrees	Not more than 1,200 hectares. Maximum height 375 mRL. Slope with maximum angle of 15 degrees
Water supply	Up to 7 gl/year	Up to 9 Gl/year
Dewatering rate	1,000 – 5,000 kl/day	1,000 – 5,000 kl/day
Infrastructure		
Mine access road	Pinjin Option – 370 km (~210 km of road construction)	Pinjin Route – 370 km (~210 km of road construction)
Communications	Fibre Optic or Microwave via either Pinjin or Tropicana Transline Corridor	Removed as not a significant key characteristic relevant to the environment.
Aerodrome	All weather strip 2.4 km long	All weather strip 2.4 km long
Main power supply	Onsite power station with an installed capacity of up to 40 Mw	Removed as regulated under Part V of the <i>Environmental Protection Act 1986</i>.
Water pipeline	Approximately 50 km in length from the borefield (located north northwest of Operational Area) to the process plant.	Approximately 50 km in length from the borefield (located north northwest of Operational Area) to the process plant.
Tailings Storage Facility	Up to 7 mtpa; single-cell paddock tailings storage facility with possible in-pit deposition. Maximum height of 372 mRL. Maximum 292ha footprint.	Up to 7 mtpa; single-cell paddock tailings storage facility with possible in-pit deposition. Maximum height of 372 mRL. Maximum 292ha footprint.
Disturbance Areas		
Disturbance Area	Not more than 3,440 ha comprising: <ul style="list-style-type: none"> operational area – 2,570 ha. water supply area – 200 ha. infrastructure areas – 670 ha. 	Not more than 3,540 ha comprising: <ul style="list-style-type: none"> operational area – 2,570 ha within 27,241 ha Operational Development Envelope. water supply area – 300 ha within 19,663 ha Water Supply Area Development Envelope. infrastructure areas – 670 ha within 4,269 ha Infrastructure Development Envelope.

Note: Text in **bold** in Table 1 indicates a change to the proposal.

Abbreviations

mtpa	million tons per annum	Mw	megawatts
kl/day	kilolitres per day	Gl/year	Gigalitres per year
mRL	meters Relative Level	ha	hectares

List of Replacement Figures - Figures 1 and 2 of Schedule 1 are replaced by the following:

Figure 1: Development Envelopes

Table 2: Development Envelopes - Map Grid of Australia (MGA) Zone 51 coordinates

[Signed 17 December 2014]

Dr Paul Vogel
CHAIRMAN
Environmental Protection Authority
under delegated authority

Tropicana Gold Project

Map Version: 1.10
Date: 15/12/2014
OEPA GIS Section



Legend

-  Infrastructure Development Envelope
-  Operational Development Envelope
-  Water Supply Area Development Envelope
-  Geonoma
-  Roads

SOURCE DATA

Landgate: Roads (2013)
SLIP: Geonoma (2014)
Imagery: Landsat7_123.ecw

Location Path: L:\minor_projects\Post Assessment\2014\215_Tropicana_Gold_Project_ms_850_a45c

Disclaimer:
This map is intended as a generalised interpretation of environmental issues. The information contained on this map is to be considered indicative only and it is not intended to be used for any purpose other than the Environmental Protection Authority's use of the material. Copyright: Environmental Protection Authority, 2014. All rights reserved. All words and information displayed are subject to copyright. For the reproduction or publication of this map, permission must be obtained from the Environmental Protection Authority. All other permissions remain the copyright holder's liability.



0 12,500 25,000 50,000
Metres

Projection: Map Grid of Australia Zone 51
Datum: Geocentric Datum of Australia, 1994
Scale: 1:1,000,000

LOCALITY MAP



Figure 1: Development Envelopes

Table 2: Development Envelopes - Map Grid of Australia (MGA) Zone 51 coordinates

Water Supply Development Envelope					
	Easting	Northing		Easting	Northing
0	651062.81	6772549.53	46	632952.86	6805845.19
1	650736.61	6772554.95	47	632679.92	6806211.37
2	650929.95	6774608.16	48	632338.03	6806385.4
3	650479.16	6776567.22	49	631942.91	6806733.78
4	649597.54	6777903.46	50	631684.7	6807499.83
5	648674.65	6779900.94	51	631694.7	6808053.04
6	646895.45	6782056.94	52	631692.25	6808129.53
7	646738.1	6782382.36	53	631837.35	6808130.54
8	646418.61	6783705.67	54	631835.63	6808039.8
9	646126.64	6784466.69	55	631794.45	6808039.05
10	645478.01	6785473.62	56	631785.17	6807515.2
11	644959.1	6786041.98	57	631981.28	6806933.6
12	643892.56	6786856.24	58	632394.98	6806468.31
13	642493.8	6787574.33	59	632746.37	6806289.52
14	641937.23	6787880.67	60	633015.57	6805928.36
15	636753.33	6788205.5	61	633376.51	6805843.2
16	636751.83	6788447.45	62	633808.62	6805485.69
17	638749.88	6788298.28	63	634425.73	6804975.07
18	639052.88	6790382.25	64	638701.2	6807739.52
19	638586.64	6791008.06	65	642738.67	6809282.46
20	638093.97	6790442.01	66	647646.05	6806944.34
21	635801.03	6789468	67	649187.7	6805685.29
22	635151.22	6791478.8	68	648930.73	6802345.22
23	636811.26	6793390.42	69	648160.98	6801984.17
24	635238.56	6795499.57	70	643689.3	6794714.3
25	634147.16	6794587.28	71	641283.25	6794841.46
26	633866.54	6795456.29	72	639659.09	6794861.26
27	633514.28	6795883.72	73	638519.74	6792678.78
28	634663.93	6796711.72	74	639148.87	6791633.53
29	633356.31	6799470.2	75	640168.63	6789874.98
30	631705.47	6803034.31	76	640925.62	6788804.45
31	631761.09	6803037.23	77	641805.57	6788080.79
32	631799.61	6803096.74	78	642542.6	6787661.39
33	632322.14	6803171.67	79	643942.54	6786942.72
34	632451.47	6803155.34	80	645023.66	6786118.41
35	632556.74	6803166.55	81	645560.05	6785530.88
36	632560.26	6803167.95	82	646213.84	6784516.12
37	632606.5	6803194.23	83	646514.78	6783734.14
38	632770.09	6803222.94	84	646832.11	6782417.51
39	632918.9	6803263.12	85	646983.11	6782105.58
40	633391.75	6803291.26	86	648760.88	6779952.35
41	634000.96	6804700.29	87	649698.05	6777938.72
42	633849.22	6804880.8	88	650575.6	6776597.32
43	633718.73	6805430.54	89	651032.85	6774612.35
44	633332.04	6805751.29	90	651062.81	6772549.53
45	633160.26	6805769.11			

Operational Development Envelope					
	Easting	Northing		Easting	Northing
0	655599.94	6772489.89			
1	655373.12	6755867.16			
2	653754.4	6755889.19			
3	653729.4	6754042.28			
4	652111.05	6754064.08			
5	652086.29	6752217.06			
6	650468.11	6752238.64			
7	650443.61	6750391.63			
8	640736.45	6750516.28			
9	640805.18	6756057.07			
10	642412.52	6756040.02			
11	642597.36	6770815.6			
12	645850.15	6770771.32			
13	645873.73	6772618.15			
14	655599.94	6772489.89			
Infrastructure Development Envelope					
	Easting	Northing		Easting	Northing
0	640100.24	6752172.04	29	623975.81	6739734.71
1	639022.29	6751957.67	30	621553.74	6739358.02
2	638330.43	6751892.14	31	620420.81	6738629.93
3	637690.02	6751964.8	32	619766.62	6738401.95
4	636898.51	6751981.38	33	617456.79	6738283.99
5	635388.09	6751825.12	34	616804.25	6738131.11
6	634560.85	6751688.95	35	616317.02	6737902.4
7	633829.01	6751451.87	36	615901.29	6737605.33
8	633384.8	6751176.04	37	614965.8	6736228.45
9	632921.75	6750544.06	38	614320.43	6735617.94
10	632102.65	6749007.58	39	613452.16	6734958.49
11	631728.34	6748180.54	40	612164.96	6734275.76
12	631633.17	6747704.63	41	609849.24	6733433.57
13	631383.98	6746925.66	42	607890.97	6732908.82
14	630971.64	6746168.47	43	605896.48	6732174.25
15	630168.6	6745263.59	44	603686.04	6731787.64
16	629254.62	6744408.13	45	602013.92	6731404.49
17	628274.85	6743288.01	46	600598.01	6730955.57
18	627790.22	6742995.74	47	599648.29	6730324.83
19	627508.92	6742932.27	48	597515.85	6729450.87
20	627171.81	6742910.64	49	596086.55	6728997.36
21	626935.3	6742841.9	50	595196.31	6728449.41
22	626585.71	6742591.97	51	594330.48	6727652.86
23	626197.87	6742100.72	52	592967.47	6726324.78
24	625637.38	6741038.53	53	592261.47	6725689.66
25	625267.6	6740436.51	54	590512.21	6724395.15
26	625058.56	6740207.2	55	589286	6723414.32
27	624666.6	6739968.64	56	586174.73	6721176.99
28	624448.81	6739869.31	57	585375.97	6721056.23

Infrastructure Development Envelope (continued)					
	Easting	Northing		Easting	Northing
58	583049.93	6719945.27	105	483730.99	6672210.35
59	581320.99	6719011.86	106	480236.46	6672339.48
60	580422.5	6717975.05	107	473896.47	6667704.18
61	578673.99	6716051.73	108	470342.67	6667472.99
62	577626.05	6715083.57	109	470329.98	6667672.59
63	572471.8	6713365.44	110	473823.13	6667894.69
64	569811.24	6712910.01	111	480168.37	6672533.59
65	568409.57	6712559.83	112	483691.58	6672407.07
66	565827.36	6712106.23	113	484606.43	6672667.27
67	564827.5	6711830.35	114	485437.03	6673300.74
68	563737.28	6711285.27	115	486136.69	6673588.64
69	563204.44	6710619.22	116	486446.51	6673915.58
70	562931.44	6709629.68	117	487183.44	6674173.82
71	562685.84	6708262.92	118	488211.76	6674777.78
72	562535.13	6707922.52	119	490164.82	6674370.28
73	562216.4	6707391.88	120	492216.25	6674236.38
74	560200.62	6705760.31	121	504373.22	6674445.97
75	559240.37	6705156.41	122	508134.44	6674933.47
76	558406.01	6704833.21	123	514618.04	6677025.01
77	543863.14	6703085.18	124	518866.89	6679532.49
78	541593.2	6702840.72	125	522148.67	6682255.6
79	539256.5	6702422.28	126	524175.3	6683793.16
80	537548.93	6702038.9	127	525426.09	6684904.97
81	534835.64	6701238.84	128	525843.91	6685388.54
82	533396.02	6700450.49	129	527771.15	6687385.59
83	532720.22	6699538.17	130	529160.52	6688601.42
84	531677.44	6696097.02	131	529496.13	6689171.95
85	531116.94	6693680.82	132	530924.94	6693736.96
86	529683.58	6689101.26	133	531484.38	6696149.44
87	529315.54	6688473	134	532533.84	6699612.76
88	527909.29	6687240.83	135	533280.7	6700615.36
89	525989.75	6685251.65	136	534761.99	6701425.37
90	525568.68	6684764.42	137	537495.53	6702231.66
91	524305.26	6683641.1	138	539219.1	6702618.76
92	522273.2	6682099.07	139	541565.59	6703038.87
93	518988.45	6679373.48	140	543840.05	6703283.84
94	514703.68	6676843.63	141	558369.52	6705030.26
95	508181.24	6674738.62	142	559152.88	6705336.73
96	504385.02	6674246.18	143	560083.41	6705922.62
97	492209.36	6674036.42	144	562058.55	6707516.99
98	490137.65	6674171.87	145	562360.43	6708020.1
99	488249.45	6674573.9	146	562492.87	6708318.05
100	487271.02	6673993.49	147	562735.42	6709669.61
101	486550.74	6673741.51	148	563019.59	6710699.96
102	486248.38	6673419.88	149	563620.64	6711450.14
103	485540.63	6673128.7	150	564752.67	6712016.3
104	484700.14	6672488.61	151	565783.1	6712301.39

Infrastructure Development Envelope (continued)					
	Easting	Northing		Easting	Northing
152	568371.46	6712756.2	200	628142.95	6743439.2
153	569773.79	6713106.51	201	629107.3	6744543.49
154	572423.11	6713559.72	202	630027.78	6745405.71
155	577534.2	6715263.39	203	630809.65	6746286.82
156	578529.1	6716189.66	204	631198.47	6747001.52
157	580273.03	6718107.95	205	631439.8	6747756.32
158	581194.11	6719168.36	206	631538.54	6748245.53
159	582958.91	6720123.37	207	631922.79	6749095.15
160	585304.69	6721243.73	208	632751.02	6750648.69
161	586078.17	6721353.9	209	633262.83	6751335.73
162	589167.15	6723575.2	210	633755.75	6751638.37
163	590391.72	6724554.8	211	634514.94	6751883.89
164	592135.79	6725845.38	212	635361.38	6752023.37
165	592829.99	6726470.07	213	636889.91	6752181.38
166	594192.61	6727797.76	214	637701.38	6752164.58
167	595067.98	6728603.12	215	638322.13	6752092.25
168	595999.3	6729178.11	216	638994.36	6752155.84
169	597443.8	6729637.48	217	640083.38	6752371.77
170	599563.21	6730506.11	218	643282.39	6752400.92
171	600524.09	6731141.94	219	643666.41	6752474.65
172	601965.27	6731598.52	220	643949.11	6752678.13
173	603647.21	6731983.84	221	644194.02	6753026.43
174	605842.54	6732367.3	222	644321.33	6754119.54
175	607829.78	6733099.34	223	644645.25	6755368.05
176	609788.26	6733624.15	224	645480.16	6757710.79
177	612084.94	6734459.31	225	645553.31	6758201.26
178	613344.26	6735127.28	226	645798.8	6758851.63
179	614193.31	6735772.5	227	645985.89	6758780.93
180	614810.65	6736355.55	228	645746.53	6758147.54
181	615758.58	6737746.43	229	645671.84	6757652.86
182	616217.59	6738075.95	230	644837.61	6755313.06
183	616734.24	6738318.47	231	644518.63	6754084.73
184	617013.82	6738404.83	232	644384.84	6752958.34
185	617433.95	6738482.73	233	644097.93	6752542.68
186	619802.87	6738616.4	234	643742.47	6752287.13
187	620325.05	6738805.77	235	643298.62	6752201.17
188	621481.12	6739545.62	236	640100.24	6752172.04
189	623939.54	6739931.42			
190	624379.95	6740057.16			
191	624830.94	6740292.4			
192	625105.31	6740553.55			
193	625463.54	6741137.48			
194	626027.21	6742205.11			
195	626447.29	6742736.5			
196	626857.34	6743026.21			
197	627138.68	6743107.99			
198	627484.89	6743130.89			
199	627724.24	6743184.64			

Attachment 3 to Ministerial Statement 839

Change to proposal approved under section 45C of the *Environmental Protection Act 1986*

This Attachment replaces Schedule 1, Attachments 1 and 2 of Ministerial Statement 839

Proposal: Tropicana Gold Project, Shire of Menzies, Shire of Laverton and the City of Kalgoorlie – Boulder

Proponent: Tropicana Joint Venture (AngloGold Ashanti Australia Limited and Independence Group NL)

Changes:

- Increase the height of the waste landforms from the approved 375 mRL to 417 mRL including the rehabilitation cover;
- Remove the tailings storage facility (TSF) specifications including the tailings deposition rate, number of TSF cells, disturbance footprint of the TSF, and the maximum height of the TSF; and
- Clarify that the overburden and waste is for disposal in the waste landforms.

Table 1: Summary of the Proposal

Proposal Title	Tropicana Gold Project, Shire of Menzies, Shire of Laverton and the City of Kalgoorlie – Boulder
Short Description	The construction and operation of an open-cut gold mine and associated infrastructure, located approximately 330 km east northeast of Kalgoorlie and 200 km east of Laverton.

Table 2: Key Characteristics Table:

Element	Description of approved proposal	Description of approved change to proposal
General		
Project Life	Approximately 15 years of mining; total project duration up to 25 years (including post closure monitoring)	Approximately 15 years of mining; total project duration up to 25 years (including post closure monitoring)
Mining and Processing		
Number of pits	Up to 4	Up to 4
Open pit void/s	Not more than 400 ha	Not more than 400 ha
Maximum length of pit/s	6 km (if pits combine)	6 km (if pits combine)
Maximum width of pit	1.5 km	1.5 km
Overburden and waste	Not more than 800 mt	Not more than 800 mt placed in waste landforms.

Element	Description of approved proposal	Description of approved change to proposal
Waste landform	Not more than 1,200 hectares. Maximum height 375 mRL. Slope with maximum angle of 15 degrees	Not more than 1,200 hectares. Maximum height 417 mRL including rehabilitation cover . Slope with maximum angle of 15 degrees
Water supply	Up to 9 Gl/year	Up to 9 Gl/year
Dewatering rate	1,000 – 5,000 kl/day	1,000 – 5,000 kl/day
Infrastructure		
Mine access road	Pinjin Route – 370 km (~210 km of road construction)	Pinjin Route – 370 km (~210 km of road construction)
Aerodrome	All weather strip 2.4 km long	All weather strip 2.4 km long
Water pipeline	Approximately 50 km in length from the borefield (located north northwest of Operational Area) to the process plant	Approximately 50 km in length from the borefield (located north northwest of Operational Area) to the process plant
Tailings Storage Facility (TSF)	Up to 7 mtpa; single-cell paddock tailings storage facility with possible in-pit deposition. Maximum height of 372 mRL. Maximum 292 ha footprint.	Single-cell tailings storage facility with possible in-pit deposition. Other TSF specifications have been deleted as they are not relevant to the environment or regulated under other legislation.
Disturbance Areas		
Disturbance Area	Not more than 3,540 ha comprising: <ul style="list-style-type: none"> operational area – 2,570 ha within 27,241 ha Operational Development Envelope. water supply area – 300 ha within 19,663 ha Water Supply Area Development Envelope. infrastructure areas – 670 ha within 4,269 ha Infrastructure Development Envelope. 	Not more than 3,540 ha comprising: <ul style="list-style-type: none"> operational area – 2,570 ha within 27,241 ha Operational Development Envelope. water supply area – 300 ha within 19,663 ha Water Supply Area Development Envelope. infrastructure areas – 670 ha within 4,269 ha Infrastructure Development Envelope.

Note: Text in **bold** in Table 2 indicates a change to the proposal.

Table 3: Abbreviations

Abbreviation	Term
mt	million tonnes
kl/day	Kilolitres per day
mRL	metres Relative Level
Gl/year	Gigalitres per year
ha	hectares
km	kilometres

Figures – All previous Figures are replaced by the following:

Figure 1: Development Envelopes

Tables – Table 4 is inserted:

Table 4 coordinates of Development Envelopes for Tropicana Gold Project

[Signed 8 December 2016]

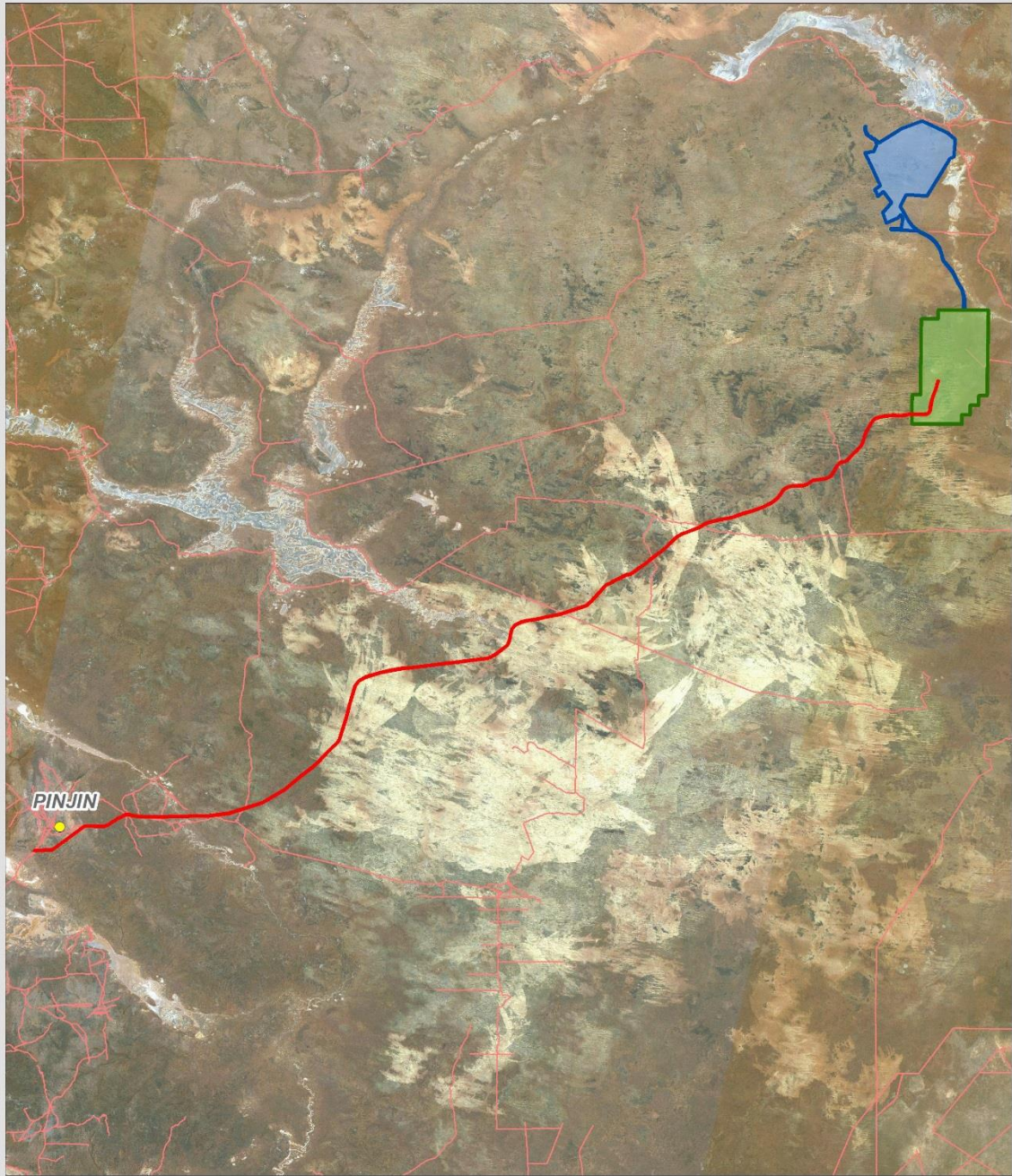
Dr Tom Hatton

CHAIRMAN

Environmental Protection Authority
under delegated authority

Tropicana Gold Project

Map Version: 1.10
Date: 15/12/2014
OEPA GIS Section



Legend

- Infrastructure Development Envelope
- Operational Development Envelope
- Water Supply Area Development Envelope
- Geonoma
- Roads

SOURCE DATA

Landgate: Roads (2013)
SLIP: Geonoma (2014)
Imagery: Landsat7_123.ecw

Location Path: \\.\minor_projects\Post
Assessment\20141215_Tropicana_Gold_Project
_ms_839_s46c

Disclaimer:
This map is intended as a generalised interpretation of environmental issues.
The information contained on this map is to be considered indicative only
and in no event shall the Environmental Protection Authority be liable for any
incident or consequential damages resulting from use of the material.
Copyright: Environmental Protection Authority, 2014. All Rights Reserved.
All works and information displayed are subject to Copyright. For the reproduction or publication
of works that are protected by the Commonwealth Copyright Act, written permission must be sought
from the Authority.



0 12,500 25,000 50,000
Metres

Projection: Map Grid of Australia Zone 51
Datum: Geocentric Datum of Australia, 1994
Scale: 1:1,000,000



LOCALITY MAP



Figure 1: Development Envelopes

Table 4 – Development Envelopes – Map Grid of Australia (MGA) Zone 51 coordinates

Water Supply Development Envelope					
ID	Easting (MGA)	Northing (MGA)	ID	Easting (MGA)	Northing (MGA)
1	651062.81	6772549.53	47	632952.86	6805845.19
2	650736.61	6772554.95	48	632679.92	6806211.37
3	650929.95	6774608.16	49	632338.03	6806385.4
4	650479.16	6776567.22	50	631942.91	6806733.78
5	649597.54	6777903.46	51	631684.7	6807499.83
6	648674.65	6779900.94	52	631694.7	6808053.04
7	646895.45	6782056.94	53	631692.25	6808129.53
8	646738.1	6782382.36	54	631837.35	6808130.54
9	646418.61	6783705.67	55	631835.63	6808039.8
10	646126.64	6784466.69	56	631794.45	6808039.05
11	645478.01	6785473.62	57	631785.17	6807515.2
12	644959.1	6786041.98	58	631981.28	6806933.6
13	643892.56	6786856.24	59	632394.98	6806468.31
14	642493.8	6787574.33	60	632746.37	6806289.52
15	641937.23	6787880.67	61	633015.57	6805928.36
16	636753.33	6788205.5	62	633376.51	6805843.2
17	636751.83	6788447.45	63	633808.62	6805485.69
18	638749.88	6788298.28	64	634425.73	6804975.07
19	639052.88	6790382.25	65	638701.2	6807739.52
20	638586.64	6791008.06	66	642738.67	6809282.46
21	638093.97	6790442.01	67	647646.05	6806944.34
22	635801.03	6789468	68	649187.7	6805685.29
23	635151.22	6791478.8	69	648930.73	6802345.22
24	636811.26	6793390.42	70	648160.98	6801984.17
25	635238.56	6795499.57	71	643689.3	6794714.3
26	634147.16	6794587.28	72	641283.25	6794841.46
27	633866.54	6795456.29	73	639659.09	6794861.26
28	633514.28	6795883.72	74	638519.74	6792678.78
29	634663.93	6796711.72	75	639148.87	6791633.53
30	633356.31	6799470.2	76	640168.63	6789874.98
31	631705.47	6803034.31	77	640925.62	6788804.45
32	631761.09	6803037.23	78	641805.57	6788080.79
33	631799.61	6803096.74	79	642542.6	6787661.39
34	632322.14	6803171.67	80	643942.54	6786942.72
35	632451.47	6803155.34	81	645023.66	6786118.41
36	632556.74	6803166.55	82	645560.05	6785530.88
37	632560.26	6803167.95	83	646213.84	6784516.12
38	632606.5	6803194.23	84	646514.78	6783734.14
39	632770.09	6803222.94	85	646832.11	6782417.51
40	632918.9	6803263.12	86	646983.11	6782105.58
41	633391.75	6803291.26	87	648760.88	6779952.35
42	634000.96	6804700.29	88	649698.05	6777938.72
43	633849.22	6804880.8	89	650575.6	6776597.32
44	633718.73	6805430.54	90	651032.85	6774612.35
45	633332.04	6805751.29	91	651062.81	6772549.53
46	633160.26	6805769.11			

Operational Development Envelope					
ID	Easting (MGA)	Northing (MGA)	ID	Easting (MGA)	Northing (MGA)
1	655599.94	6772489.89	9	640736.45	6750516.28
2	655373.12	6755867.16	10	640805.18	6756057.07
3	653754.4	6755889.19	11	642412.52	6756040.02
4	653729.4	6754042.28	12	642597.36	6770815.6
5	652111.05	6754064.08	13	645850.15	6770771.32
6	652086.29	6752217.06	14	645873.73	6772618.15
7	650468.11	6752238.64	15	655599.94	6772489.89
8	650443.61	6750391.63			

Infrastructure Development Envelope					
ID	Easting (MGA)	Northing (MGA)	ID	Easting (MGA)	Northing (MGA)
1	640100.24	6752172.04	37	615901.29	6737605.33
2	639022.29	6751957.67	38	614965.8	6736228.45
3	638330.43	6751892.14	39	614320.43	6735617.94
4	637690.02	6751964.8	40	613452.16	6734958.49
5	636898.51	6751981.38	41	612164.96	6734275.76
6	635388.09	6751825.12	42	609849.24	6733433.57
7	634560.85	6751688.95	43	607890.97	6732908.82
8	633829.01	6751451.87	44	605896.48	6732174.25
9	633384.8	6751176.04	45	603686.04	6731787.64
10	632921.75	6750544.06	46	602013.92	6731404.49
11	632102.65	6749007.58	47	600598.01	6730955.57
12	631728.34	6748180.54	48	599648.29	6730324.83
13	631633.17	6747704.63	49	597515.85	6729450.87
14	631383.98	6746925.66	50	596086.55	6728997.36
15	630971.64	6746168.47	51	595196.31	6728449.41
16	630168.6	6745263.59	52	594330.48	6727652.86
17	629254.62	6744408.13	53	592967.47	6726324.78
18	628274.85	6743288.01	54	592261.47	6725689.66
19	627790.22	6742995.74	55	590512.21	6724395.15
20	627508.92	6742932.27	56	589286	6723414.32
21	627171.81	6742910.64	57	586174.73	6721176.99
22	626935.3	6742841.9	58	585375.97	6721056.23
23	626585.71	6742591.97	59	583049.93	6719945.27
24	626197.87	6742100.72	60	581320.99	6719011.86
25	625637.38	6741038.53	61	580422.5	6717975.05
26	625267.6	6740436.51	62	578673.99	6716051.73
27	625058.56	6740207.2	63	577626.05	6715083.57
28	624666.6	6739968.64	64	572471.8	6713365.44
29	624448.81	6739869.31	65	569811.24	6712910.01
30	623975.81	6739734.71	66	568409.57	6712559.83
31	621553.74	6739358.02	67	565827.36	6712106.23
32	620420.81	6738629.93	68	564827.5	6711830.35
33	619766.62	6738401.95	69	563737.28	6711285.27
34	617456.79	6738283.99	70	563204.44	6710619.22
35	616804.25	6738131.11	71	562931.44	6709629.68
36	616317.02	6737902.4	72	562685.84	6708262.92

Infrastructure Development Envelope (continued)					
ID	Easting (MGA)	Northing (MGA)	ID	Easting (MGA)	Northing (MGA)
73	562535.13	6707922.52	122	504373.22	6674445.97
74	562216.4	6707391.88	123	508134.44	6674933.47
75	560200.62	6705760.31	124	514618.04	6677025.01
76	559240.37	6705156.41	125	518866.89	6679532.49
77	558406.01	6704833.21	126	522148.67	6682255.6
78	543863.14	6703085.18	127	524175.3	6683793.16
79	541593.2	6702840.72	128	525426.09	6684904.97
80	539256.5	6702422.28	129	525843.91	6685388.54
81	537548.93	6702038.9	130	527771.15	6687385.59
82	534835.64	6701238.84	131	529160.52	6688601.42
83	533396.02	6700450.49	132	529496.13	6689171.95
84	532720.22	6699538.17	133	530924.94	6693736.96
85	531677.44	6696097.02	134	531484.38	6696149.44
86	531116.94	6693680.82	135	532533.84	6699612.76
87	529683.58	6689101.26	136	533280.7	6700615.36
88	529315.54	6688473	137	534761.99	6701425.37
89	527909.29	6687240.83	138	537495.53	6702231.66
90	525989.75	6685251.65	139	539219.1	6702618.76
91	525568.68	6684764.42	140	541565.59	6703038.87
92	524305.26	6683641.1	141	543840.05	6703283.84
93	522273.2	6682099.07	142	558369.52	6705030.26
94	518988.45	6679373.48	143	559152.88	6705336.73
95	514703.68	6676843.63	144	560083.41	6705922.62
96	508181.24	6674738.62	145	562058.55	6707516.99
97	504385.02	6674246.18	146	562360.43	6708020.1
98	492209.36	6674036.42	147	562492.87	6708318.05
99	490137.65	6674171.87	148	562735.42	6709669.61
100	488249.45	6674573.9	149	563019.59	6710699.96
101	487271.02	6673993.49	150	563620.64	6711450.14
102	486550.74	6673741.51	151	564752.67	6712016.3
103	486248.38	6673419.88	152	565783.1	6712301.39
104	485540.63	6673128.7	153	568371.46	6712756.2
105	484700.14	6672488.61	154	569773.79	6713106.51
106	483730.99	6672210.35	155	572423.11	6713559.72
107	480236.46	6672339.48	156	577534.2	6715263.39
108	473896.47	6667704.18	157	578529.1	6716189.66
109	470342.67	6667472.99	158	580273.03	6718107.95
110	470329.98	6667672.59	159	581194.11	6719168.36
111	473823.13	6667894.69	160	582958.91	6720123.37
112	480168.37	6672533.59	161	585304.69	6721243.73
113	483691.58	6672407.07	162	586078.17	6721353.9
114	484606.43	6672667.27	163	589167.15	6723575.2
115	485437.03	6673300.74	164	590391.72	6724554.8
116	486136.69	6673588.64	165	592135.79	6725845.38
117	486446.51	6673915.58	166	592829.99	6726470.07
118	487183.44	6674173.82	167	594192.61	6727797.76
119	488211.76	6674777.78	168	595067.98	6728603.12
120	490164.82	6674370.28	169	595999.3	6729178.11
121	492216.25	6674236.38	170	597443.8	6729637.48

Infrastructure Development Envelope (continued)					
ID	Easting (MGA)	Northing (MGA)	ID	Easting (MGA)	Northing (MGA)
171	599563.21	6730506.11	205	631198.47	6747001.52
172	600524.09	6731141.94	206	631439.8	6747756.32
173	601965.27	6731598.52	207	631538.54	6748245.53
174	603647.21	6731983.84	208	631922.79	6749095.15
175	605842.54	6732367.3	209	632751.02	6750648.69
176	607829.78	6733099.34	210	633262.83	6751335.73
177	609788.26	6733624.15	211	633755.75	6751638.37
178	612084.94	6734459.31	212	634514.94	6751883.89
179	613344.26	6735127.28	213	635361.38	6752023.37
180	614193.31	6735772.5	214	636889.91	6752181.38
181	614810.65	6736355.55	215	637701.38	6752164.58
182	615758.58	6737746.43	216	638322.13	6752092.25
183	616217.59	6738075.95	217	638994.36	6752155.84
184	616734.24	6738318.47	218	640083.38	6752371.77
185	617013.82	6738404.83	219	643282.39	6752400.92
186	617433.95	6738482.73	220	643666.41	6752474.65
187	619802.87	6738616.4	221	643949.11	6752678.13
188	620325.05	6738805.77	222	644194.02	6753026.43
189	621481.12	6739545.62	223	644321.33	6754119.54
190	623939.54	6739931.42	224	644645.25	6755368.05
191	624379.95	6740057.16	225	645480.16	6757710.79
192	624830.94	6740292.4	226	645553.31	6758201.26
193	625105.31	6740553.55	227	645798.8	6758851.63
194	625463.54	6741137.48	228	645985.89	6758780.93
195	626027.21	6742205.11	229	645746.53	6758147.54
196	626447.29	6742736.5	230	645671.84	6757652.86
197	626857.34	6743026.21	231	644837.61	6755313.06
198	627138.68	6743107.99	232	644518.63	6754084.73
199	627484.89	6743130.89	233	644384.84	6752958.34
200	627724.24	6743184.64	234	644097.93	6752542.68
201	628142.95	6743439.2	235	643742.47	6752287.13
202	629107.3	6744543.49	236	643298.62	6752201.17
203	630027.78	6745405.71	237	640100.24	6752172.04
204	630809.65	6746286.82			

Attachment 4 to Ministerial Statement 839

Change to proposal approved under section 45C of the *Environmental Protection Act 1986*

This Attachment replaces Schedule 1 and Attachments 1, 2 and 3 of Ministerial Statement 839

Proposal: Tropicana Gold Project

Proponent: Tropicana Joint Venture (AngloGold Ashanti Australia Limited and Independence Group NL)

Changes:

- change in the Short Description to include underground mining methods (Table 1); and
- correct an administrative error for the authorised extent of the Infrastructure Development Envelope from 4269 ha to 18,494 ha (Table 2, Figure 1 and Table 4).

Table 1: Summary of the Proposal

Proposal Title	Tropicana Gold Project, Shire of Menzies, Shire of Laverton and the City of Kalgoorlie-Boulder
Short Description	The construction and operation of a gold mine utilising open-cut and underground mining methods , and associated infrastructure located approximately 330 km east northeast of Kalgoorlie and 200 km east of Laverton.

Table 2: Location and authorised extent of physical and operational elements

Element	Location	Previously Authorised Extent	Authorised Extent
<i>General</i>			
Project life	NA	Approximately 15 years of mining; total project duration up to 25 years (including post closure monitoring)	Approximately 15 years of mining; total project duration up to 25 years (including post closure monitoring)
Disturbance footprint	Figure 1	Not more than 3540 ha comprising: <ul style="list-style-type: none"> • Operational area – 2570 ha within a 27,241 ha Operational Development Envelope. • Water supply area – 300 ha within a 19,663 ha Water Supply Area Development Envelope. • Infrastructure areas – 670 ha within a 4269 ha Infrastructure Development 	Not more than 3540 ha comprising: <ul style="list-style-type: none"> • Operational area – 2570 ha within a 27,241 ha Operational Development Envelope. • Water supply area – 300 ha within a 19,663 ha Water Supply Area Development Envelope. • Infrastructure areas – 670 ha within a 18,494 ha Infrastructure Development

Element	Location	Previously Authorised Extent	Authorised Extent
		Envelope.	Envelope.
<i>Physical elements</i>			
Number of pits	Figure 1	Up to 4	Up to 4
Open pit voids	Figure 1	Not more than 400 ha	Not more than 400 ha
Maximum length of pit/s	Figure 1	6 km (if pits combine)	6 km (if puts combine)
Maximum width of pit	Figure 1	1.5 km	1.5 km
Waste Landform	Figure 1	Not more than 1200 ha. Maximum height 417 mRL including rehabilitation cover. Slope with maximum angle of 15 degrees	Not more than 1200 ha. Maximum height 417 mRL including rehabilitation cover. Slope with maximum angle of 15 degrees
Mine access road	Figure 1	Pinjin Route – 370 km (~ 210 km of road construction)	Pinjin Route – 370 km (~ 210 km of road construction)
Aerodrome	Figure 1	All weather strip 2.4 km	All weather strip 2.4 km
Water pipeline	Figure 1	Approximately 50 km in length from the borefield (located north northwest of Operational Area) to process plant	Approximately 50 km in length from the borefield (located north northwest of Operational Area) to process plant
Tailings Storage Facility	Figure 1	Single-cell tailings storage facility with possible in-pit deposition.	Single-cell tailings storage facility with possible in-pit deposition.
<i>Operational elements</i>			
Overburden and waste	NA	Not more than 800 mt placed in waste landforms	Not more than 800 mt placed in waste landforms
Water supply	NA	Up to 9 GL/year	Up to 9 GL/year
Dewatering Rate	NA	1000 to 5000 kL/day	1000 to 5000 kL/day

Note: Text in **bold** in Table 2 indicates a change to the proposal.

Table 3: Abbreviations

Abbreviation	Term
ha	hectare
kL/day	kilolitres per day
km	kilometre
GL/year	gigalitres per year
mRL	metres relative level
mt	million tonnes

Figures – all previous Figures in Attachment 3 are replaced by the following:

Figure 1 Tropicana Gold Project Development Envelope

Table 4: Development Envelope Coordinates

Coordinates defining the Tropicana Gold Project development envelope are held by the Department of Water and Environmental Regulation, document reference number 2019-1554437706567.

[Signed 18 April 2019]

Dr Tom Hatton

CHAIRMAN

Environmental Protection Authority
under delegated authority

Approval date: _____



Figure 1: Development Envelopes

Attachment 5 to Ministerial Statement 839

Change to proposal approved under section 45C of the *Environmental Protection Act 1986*

This Attachment replaces Schedule 1 and Attachments 1, 2, 3 and 4 of Ministerial Statement 839

Proposal: Tropicana Gold Project, Shire of Menzies, Shire of Laverton and the City of Kalgoorlie - Boulder

Proponent: Tropicana Joint Venture (AngloGold Ashanti Australia Limited and Independence Group NL)

Change: Addition of the reference to the Kamikaze borefield in the key characteristics table.

Table 1: Summary of the Proposal

Proposal Title	Tropicana Gold Project, Shire of Menzies, Shire of Laverton and the City of Kalgoorlie-Boulder
Short Description	The construction and operation of a gold mine utilising open-cut and underground mining methods, and associated infrastructure located approximately 330 km east northeast of Kalgoorlie and 200 km east of Laverton.

Table 2: Location and authorised extent of physical and operational elements

Element	Location	Previously Authorised Extent	Authorised Extent
<i>General</i>			
Project life	NA	Approximately 15 years of mining; total project duration up to 25 years (including post closure monitoring)	Approximately 15 years of mining; total project duration up to 25 years (including post closure monitoring)
Disturbance footprint	Figure 1	Not more than 3540 ha comprising: <ul style="list-style-type: none"> • Operational area – 2570 ha within a 27,241 ha Operational Development Envelope. • Water supply area – 300 ha within a 19,663 ha Water Supply Area Development Envelope. • Infrastructure areas – 670 ha within a 18,494 ha Infrastructure Development Envelope. 	Not more than 3540 ha comprising: <ul style="list-style-type: none"> • Operational area – 2570 ha within a 27,241 ha Operational Development Envelope. • Water supply area – 300 ha within a 19,663 ha Water Supply Area Development Envelope. • Infrastructure areas – 670 ha within a 18,494 ha Infrastructure Development Envelope.
<i>Physical elements</i>			
Number of pits	Figure 1	Up to 4	Up to 4
Open pit voids	Figure 1	Not more than 400 ha	Not more than 400 ha

Maximum length of pit/s	Figure 1	6 km (if pits combine)	6 km (if pits combine)
Maximum width of pit	Figure 1	1.5 km	1.5 km
Waste Landform	Figure 1	Not more than 1200 ha. Maximum height 417 mRL including rehabilitation cover. Slope with maximum angle of 15 degrees	Not more than 1200 ha. Maximum height 417 mRL including rehabilitation cover. Slope with maximum angle of 15 degrees
Mine access road	Figure 1	Pinjin Route – 370 km (~ 210 km of road construction)	Pinjin Route – 370 km (~ 210 km of road construction)
Aerodrome	Figure 1	All weather strip 2.4 km	All weather strip 2.4 km
Water pipeline	Figure 1	Approximately 50 km in length from the borefield (located north northwest of Operational Area) to process plant	Approximately 50 km in length from the borefield (located north northwest of Operational Area) to process plant
Tailings Storage Facility	Figure 1	Single-cell tailings storage facility with possible in-pit deposition.	Single-cell tailings storage facility with possible in-pit deposition.
<i>Operational elements</i>			
Overburden and waste	NA	Not more than 800 mt placed in waste landforms	Not more than 800 mt placed in waste landforms
Water supply	NA	Up to 9 GL/year	Up to 9 GL/year with no more than 4 GL/year from the Kamikaze borefield
Dewatering Rate	NA	1000 to 5000 kL/day	1000 to 5000 kL/day

Note: Text in **bold** in Table 1 and Table 2 indicates a change to the proposal.

Table 3: Abbreviations

Abbreviation	Term
ha	hectare
kL/day	kilolitres per day
km	kilometre
GL/year	gigalitres per year
mRL	metres relative level
mt	million tonnes

Figures (attached)

Figure 1 Tropicana Gold Project Development Envelopes

Figure 2 Location of the Kamikaze Borefield within the Operational Development Envelope

Table 4: Development Envelope Coordinates

Coordinates defining the three Tropicana Gold Project development envelopes and the Kamikaze borefield footprint are held by the Department of Water and Environmental Regulation, document reference number DWERDT310716.

[Signed 13 October 2020]

Dr Tom Hatton

CHAIRMAN

Environmental Protection Authority
under delegated authority

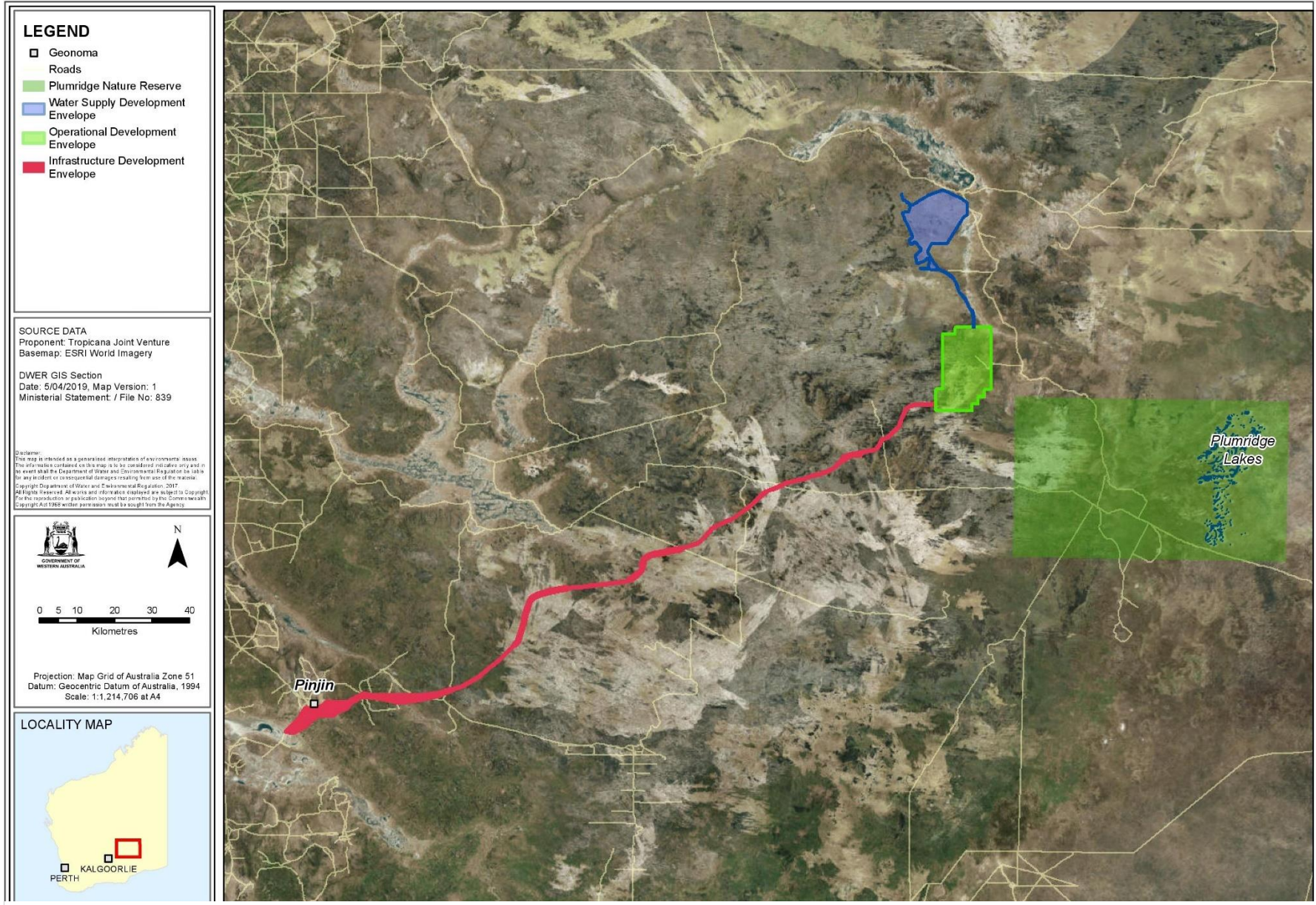


Figure 1: Tropicana Gold Mine Development Envelopes (the Kamikaze borefield is within the green Operational Development Envelope)

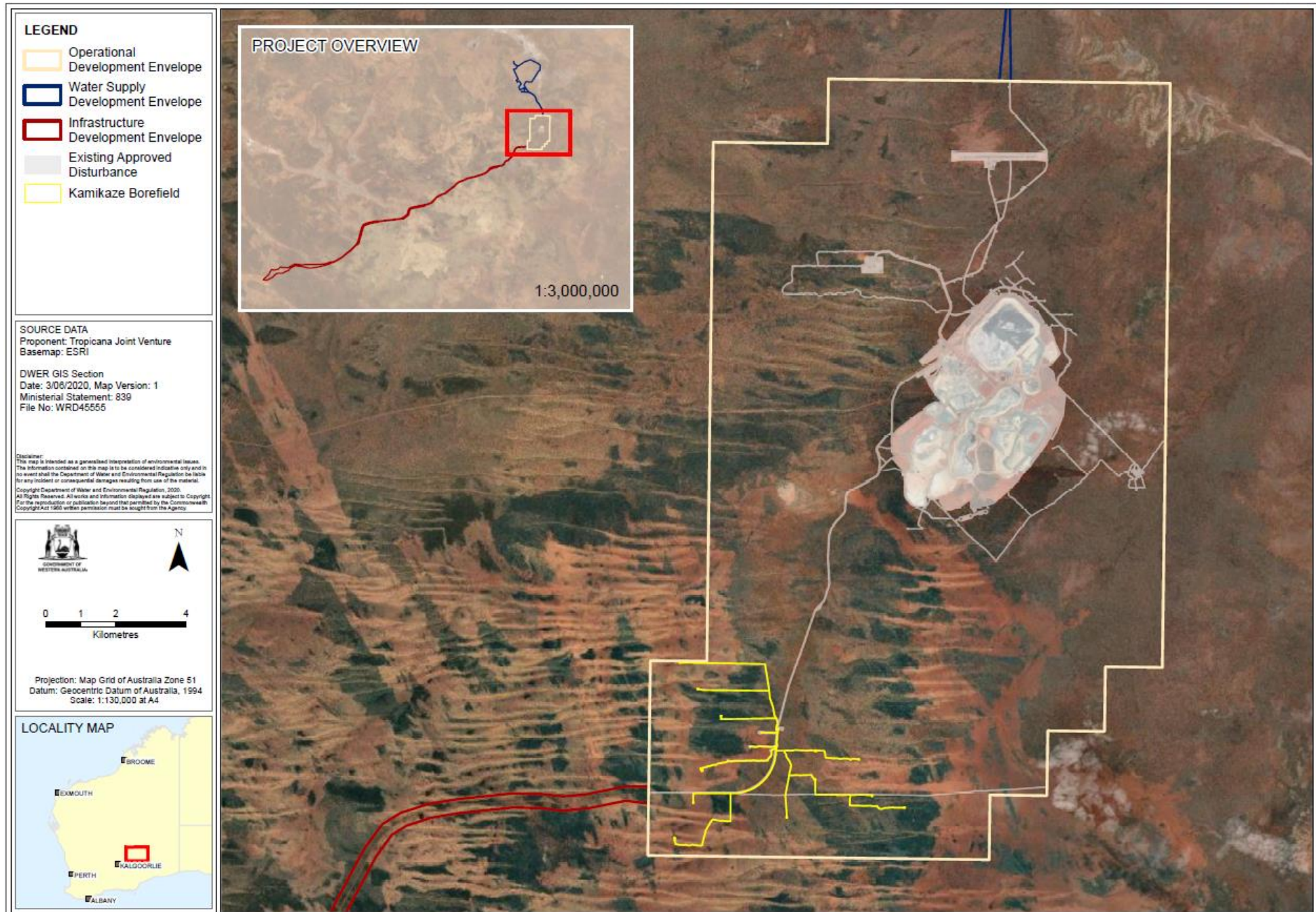


Figure 1: Location of the Kamikaze Borefield within the Operational Development Envelope

Attachment 6 to Ministerial Statement 839

Amendment to proposal and/or implementation conditions approved under section 45C of the *Environmental Protection Act 1986*

This Attachment replaces Schedule 1 and Attachments 1, 2, 3, 4 and 5 of Ministerial Statement 839.

Proposal: Tropicana Gold Project, Shire of Menzies, Shire of Laverton and the City of Kalgoorlie-Boulder

Proponent: Tropicana Joint Venture (AngloGold Ashanti Australia Limited and Independence Group NL)

Changes:

- Amendment to Proposal: Increase the authorised extent of the open pit voids from 400 ha to 420 ha.
- Amendment to Proposal: Remove the maximum number, length and width of pits as physical elements of the proposal.
- No amendments to implementation conditions.

Table 1: Summary of the proposal

Proposal Title	Tropicana Gold Project, Shire of Menzies, Shire of Laverton and the City of Kalgoorlie-Boulder
Short Description	The construction and operation of a gold mine utilising open-cut and underground mining methods, and associated infrastructure located approximately 330 km east northeast of Kalgoorlie and 200 km east of Laverton.

Table 2: Location and authorised extent of physical and operational elements

Proposal element	Location / description	Previously authorised maximum extent, capacity or range	Authorised maximum extent, capacity or range
Physical elements			
Disturbance footprint	Figure 1	Not more than 3,540 ha comprising: <ul style="list-style-type: none"> • Operational area – 2,570 ha within 27,241 ha Operational Development Envelope. • Water supply area – 300 ha within 19,663 ha Water Supply Area 	Not more than 3,540 ha comprising: <ul style="list-style-type: none"> • Operational area – 2,570 ha within 27,241 ha Operational Development Envelope. • Water supply area – 300 ha within 19,663 ha Water Supply Area

Proposal element	Location / description	Previously authorised maximum extent, capacity or range	Authorised maximum extent, capacity or range
		Development Envelope. <ul style="list-style-type: none"> Infrastructure areas – 670 ha within 18,494 ha Infrastructure Development Envelope. 	Development Envelope. <ul style="list-style-type: none"> Infrastructure areas – 670 ha within 18,494 ha Infrastructure Development Envelope.
Number of pits	Figure 1	Up to 4	Removed
Open pit void	Figure 1	Not more than 400 ha	Not more than 420 ha in total
Maximum length of pit/s	Figure 1	6 km (if pits combine)	Removed
Maximum width of pit	Figure 1	1.5 km	Removed
Waste Landform	Figure 1	Not more than 1,200 ha. Maximum height 417 mRL including rehabilitation cover. Slope with maximum angle of 15 degrees	Not more than 1,200 ha. Maximum height 417 mRL including rehabilitation cover. Slope with maximum angle of 15 degrees
Mine access road	Figure 1	Pinjin Route – 370 km (~210 km of road construction)	Pinjin Route – 370 km (~210 km of road construction)
Aerodrome	Figure 1	All weather strip 2.4 km	All weather strip 2.4 km
Water pipeline	Figure 1	Approximately 50 km in length from the borefield (located north northwest of Operational Area) to process plant	Approximately 50 km in length from the borefield (located north northwest of Operational Area) to process plant
Tailings Storage Facility	Figure 1	Single-cell tailings storage facility with possible in-pit deposition	Single-cell tailings storage facility with possible in-pit deposition
Operational elements			
Overburden and waste		Not more than 800 mt placed in waste landforms	Not more than 800 mt placed in waste landforms
Water supply	Figure 2	Up to 9 GL/year with no more than 4 GL/year from the Kamikaze borefield	Up to 9 GL/year with no more than 4 GL/year from the Kamikaze borefield
Dewatering rate		1,000 to 5,000 kL/day	1,000 to 5,000 kL/day

Proposal element	Location / description	Previously authorised maximum extent, capacity or range	Authorised maximum extent, capacity or range
Other elements which affect extent of effects on the environment			
Proposal time	Maximum project life	Approximately 15 years of mining; total project duration up to 25 years (including post closure monitoring)	Approximately 15 years of mining; total project duration up to 25 years (including post closure monitoring)

Note: Text in **bold** in Table 1 and Table 2 indicates a change to the proposal.

Table 1: Abbreviations

Abbreviation	Term
GL	gigalitre
ha	hectare
kL/day	kilolitres per day
km	kilometre
GL/year	gigalitres per year
mRL	metres relative level
mt	million tonnes

Figures (attached)

Figure 1 Tropicana Gold Project Development Envelopes

Figure 2 Location of the Kamikaze Borefield within the Operational Development Envelope

Development Envelope Coordinates

Coordinates defining the three Tropicana Gold Project development envelopes and the Kamikaze borefield footprint are held by the Department of Water and Environmental Regulation, document reference number DWERDT310716.



Professor Matthew Tonts

CHAIR

Environmental Protection Authority

Delegate of the Minister for Environment

3 June 2022

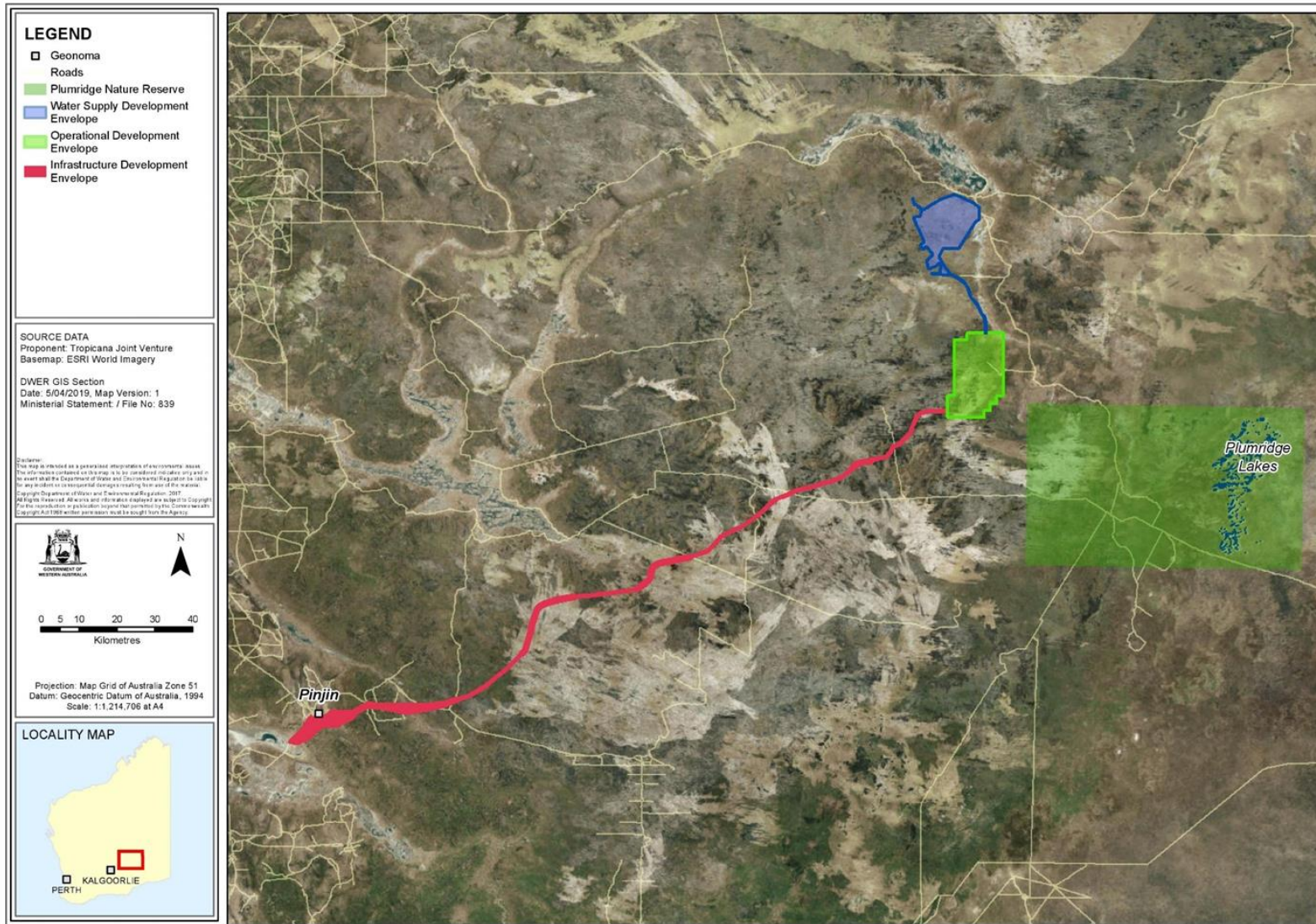


Figure 1: Tropicana Gold Mine Development Envelopes

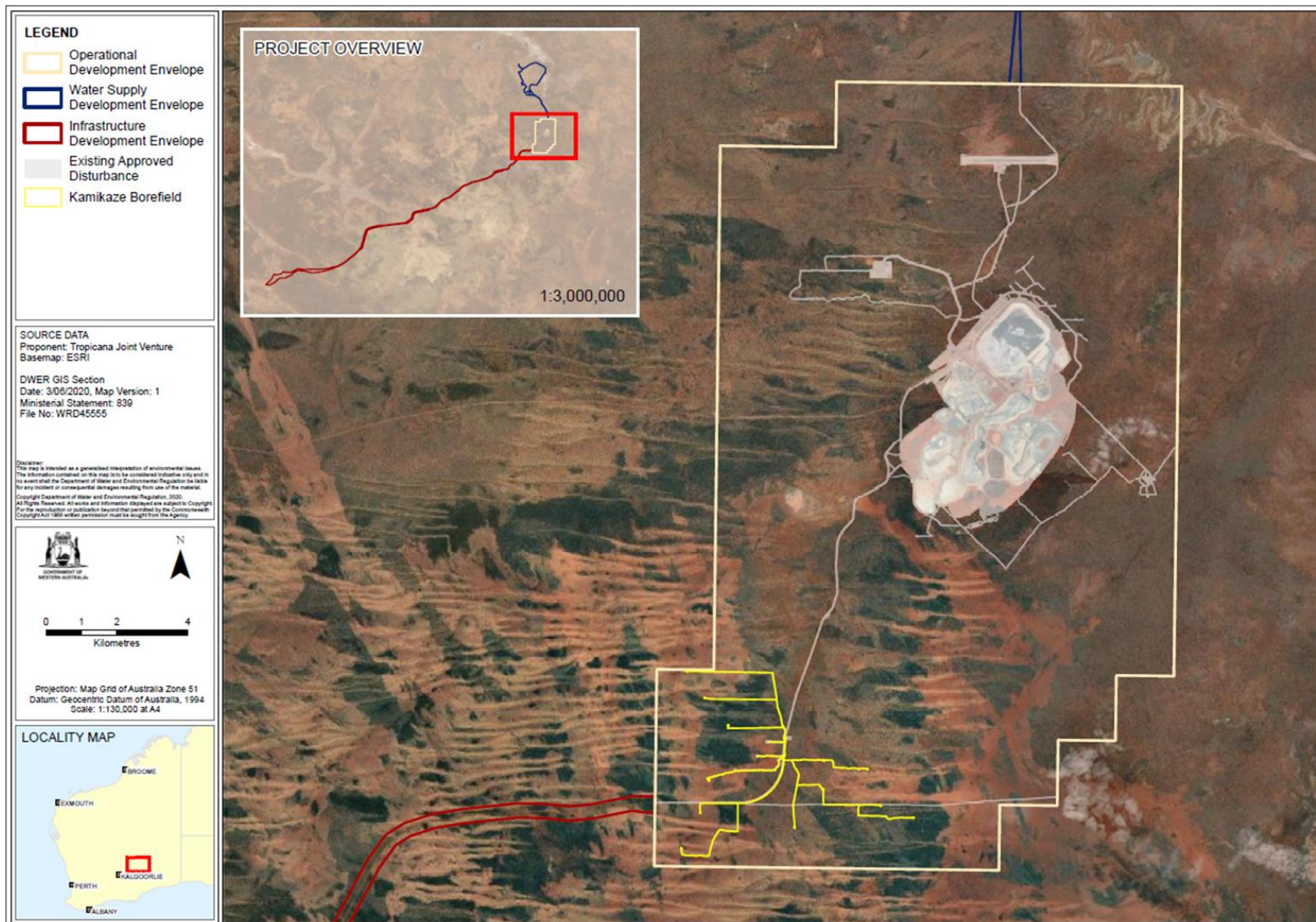


Figure 2: Location of the Kamikaze Borefield within the Operational Development Envelope

Attachment 7 to Ministerial Statement 839

Amendment to proposal approved under section 45C of the *Environmental Protection Act 1986*

This Attachment replaces Schedule 1 and Attachments 1, 2, 3, 4, 5 and 6 of Ministerial Statement 839

Proposal: Tropicana Gold Project, Shire of Menzies, Shire of Laverton and the City of Kalgoorlie-Boulder

Proponent: Tropicana Joint Venture (AngloGold Ashanti Australia Limited and Independence Group NL)

Changes:

- An increase in disturbance footprint within the Operational Development Envelope, for the construction and operation of infrastructure for the Renewable Energy Project comprising wind turbines, a solar farm and Battery Energy Storage System.
- No amendments to implementation conditions.

Table 1: Summary of the proposal

Proposal title	Tropicana Gold Project, Shire of Menzies, Shire of Laverton and the City of Kalgoorlie-Boulder
Short description	The construction and operation of a gold mine utilising open-cut and underground mining methods, and associated infrastructure located approximately 330 km east northeast of Kalgoorlie and 200 km east of Laverton.

Table 2: Location and authorised extent of physical and operational elements

Element	Location	Previously authorised extent	Authorised extent
Physical elements			
Disturbance footprint	Figure 1	Not more than 3,540 ha comprising: <ul style="list-style-type: none"> • Operational area – 2,570 ha within 27,241 ha Operational Development Envelope. • Water supply area – 300 ha within 19,663 ha Water Supply Area 	Not more than 3,650 ha comprising: <ul style="list-style-type: none"> • Operational area – 2,680 ha within 27,241 ha Operational Development Envelope. • Water supply area – 300 ha within 19,663 ha Water Supply Area

Element	Location	Previously authorised extent	Authorised extent
		Development Envelope. • Infrastructure areas – 670 ha within 18,494 ha Infrastructure Development Envelope.	Development Envelope. • Infrastructure areas – 670 ha within 18,494 ha Infrastructure Development Envelope.
Open pit void	Figure 1	Not more than 420 ha in total	Not more than 420 ha in total
Waste landform	Figure 1	Not more than 1,200 ha. Maximum height 417 mRL including rehabilitation cover. Slope with maximum angle of 15 degrees	Not more than 1,200 ha. Maximum height 417 mRL including rehabilitation cover. Slope with maximum angle of 15 degrees
Mine access road	Figure 1	Pinjin Route – 370 km (~210 km of road construction)	Pinjin Route – 370 km (~210 km of road construction)
Aerodrome	Figure 1	All weather strip 2.4 km	All weather strip 2.4 km
Water pipeline	Figure 1	Approximately 50 km in length from the borefield (located north northwest of Operational Area) to process plant	Approximately 50 km in length from the borefield (located north northwest of Operational Area) to process plant
Tailings storage facility	Figure 1	Single-cell tailings storage facility with possible in-pit deposition	Single-cell tailings storage facility with possible in-pit deposition
Operational elements			
Overburden and waste		Not more than 800 mt placed in waste landforms	Not more than 800 mt placed in waste landforms
Water supply	Figure 2	Up to 9 GL/year with no more than 4 GL/year from the Kamikaze borefield	Up to 9 GL/year with no more than 4 GL/year from the Kamikaze borefield
Dewatering rate		1,000 to 5,000 kL/day	1,000 to 5,000 kL/day
Other elements which affect extent of effects on the environment			
Proposal time	Maximum project life	Approximately 15 years of mining; total project duration up to 25 years (including post closure monitoring)	Approximately 15 years of mining with mining ceasing in 2030 ; total project duration up to 25 years (including post closure monitoring)

Note: Text in **bold** in Table 2 indicates a change to the proposal.

Condition 11 is added

- 11-1 The proponent must take measures to ensure that the proposal **Net GHG Emissions** do not exceed:
- (1) 740,000 tonnes of CO₂-e for the period between 1 January 2024 and 31 December 2026;
 - (2) 320,000 tonnes of CO₂-e for the period between 1 January 2027 and 31 December 2029;
 - (3) zero tonnes of CO₂-e from 1 January 2030 thereafter.
- 11-2 At least within six (6) months from Attachment 7 to Ministerial Statement 839 being issued, unless otherwise agreed by the **CEO**, the proponent shall develop and submit to the CEO, a Greenhouse Gas Emissions Environmental Management Plan to:
- (1) be consistent with the achievement of the **Net GHG Emission** limits in condition 11-1 (or the achievement of Net GHG Emissions reductions beyond those required by those limits);
 - (2) specify the estimated proposal **GHG emissions** and **emissions intensity** for the proposal from the date Attachment 7 to Ministerial Statement 839 is issued;
 - (3) include a comparison of the estimated proposal **GHG emissions** and **emissions intensity** for the proposal against other comparable facilities;
 - (4) identify and describe any measures that the proponent will implement to avoid, reduce and/or offset **proposal GHG emissions** and/or reduce the **emissions intensity** of the proposal.
 - (5) provide a program for the future review of the plan to:
 - (a) assess the effectiveness of measures referred to in condition 11-2(4); and
 - (b) identify and describe options for future measures that the proponent may or could implement to avoid, reduce, and/or offset proposal **GHG emissions** and/or reduce the **emissions intensity** of the proposal.
- 11-3 The proponent:
- (1) may revise and submit to the **CEO** the **confirmed** Greenhouse Gas Emissions Environmental Management Plan at any time;
 - (2) must revise and submit to the **CEO** the **confirmed** Greenhouse Gas Emissions Environmental Management Plan if there is a material risk that condition 11-1 will not be complied with, including but not limited to as a result of a change to the proposal;

- 11-4 The proponent shall implement the most recent version of the **confirmed** Greenhouse Gas Environmental Management Plan until the **CEO** has confirmed by notice in writing that it has been demonstrated that the net **GHG emission** limits in condition 11-1 have been met.
- 11-5 In accordance with condition 4-6 of Ministerial Statement 839 the proponent shall submit an annual report to the CEO each year by 24 December, commencing on the first 23 December after Attachment 7 to Ministerial Statement 839 is issued, or such other date within that financial year as is agreed by the CEO to align with other reporting requirements for GHG, specifying for the previous financial year:
- (1) the quantity of proposal **GHG emissions**; and
 - (2) the **emissions intensity** for the proposal.
- 11-6 The proponent shall make the **confirmed** Greenhouse Gas Environmental Management Plan publicly available on the proponent's website two (2) weeks of receiving written confirmation from the **CEO** as referred to in condition 11-2 or in any other manner or time specified by the **CEO**.

Table 3: Abbreviations

Abbreviation	Term
Authorised offsets	<p>Units representing GHG emissions issued under one of the following schemes and cancelled or retired in accordance with any rules applicable at the relevant time governing the cancellation or retiring of units of that kind:</p> <ol style="list-style-type: none"> (a) Australian Carbon Credit Units issued under the <i>Carbon Credits (Carbon Farming Initiative) Act 2011</i> (Cth); (b) Verified Emission Reductions issued under the Gold Standard program; (c) Verified Carbon Units issued under the Verified Carbon Standard program; or <p>other offset units that the Minister has notified the proponent in writing meet integrity principles and are based on clear, enforceable and accountable methods.</p>
CEO	The Chief Executive Officer of the Department of the Public Service of the State responsible for the administration of section 48 of the Environmental Protection Act 1986, or the CEO's delegate.
Confirmed	In relation to a plan required to be made and submitted to the CEO, means, at the relevant time, the plan that the CEO confirmed, by notice in writing, meets the requirements of the relevant condition. In relation to a plan required to be implemented without the need to be first submitted to the CEO, means that plan until it is revised, and then means, at

Abbreviation	Term
	the relevant time, the plan that the CEO confirmed, by notice in writing, meets the requirements of the relevant condition
Emissions intensity	Proposal GHG emissions per tonnes per annum of gold produced.
GL	Gigalitre
GL/year	Gigalitres per year
Greenhouse gas / GHG	Has the meaning given by Section 7A of the National Greenhouse and Energy Reporting Act 2007 (Cth) or, if that definition is amended or repealed, the meaning set out in an Act, regulation or instrument concerning greenhouse gases as specified by the Minister.
GHG emissions	Greenhouse gas emissions expressed in tonnes of carbon dioxide equivalent (CO ₂ -e) as calculated in accordance with the definition of 'carbon dioxide equivalence' in Section 7 of the <i>National Greenhouse and Energy Reporting Act 2007</i> (Cth), or, if that definition is amended or repealed, the meaning set out in an Act, regulation or instrument concerning greenhouse gases as specified by the Minister.
ha	Hectare
kL/day	Kilolitres per day
km	Kilometre

Figures (attached)

Figure 1: Tropicana Gold Project Development Envelopes

Figure 2: Operational Development Envelope

Development Envelope Coordinates

Spatial data depicting the figures are held on Environment Online by the Department of Water and Environmental Regulation.

Prof Matthew Tonts

CHAIR

Environmental Protection Authority
under delegated authority

Approval date: 1 September 2023

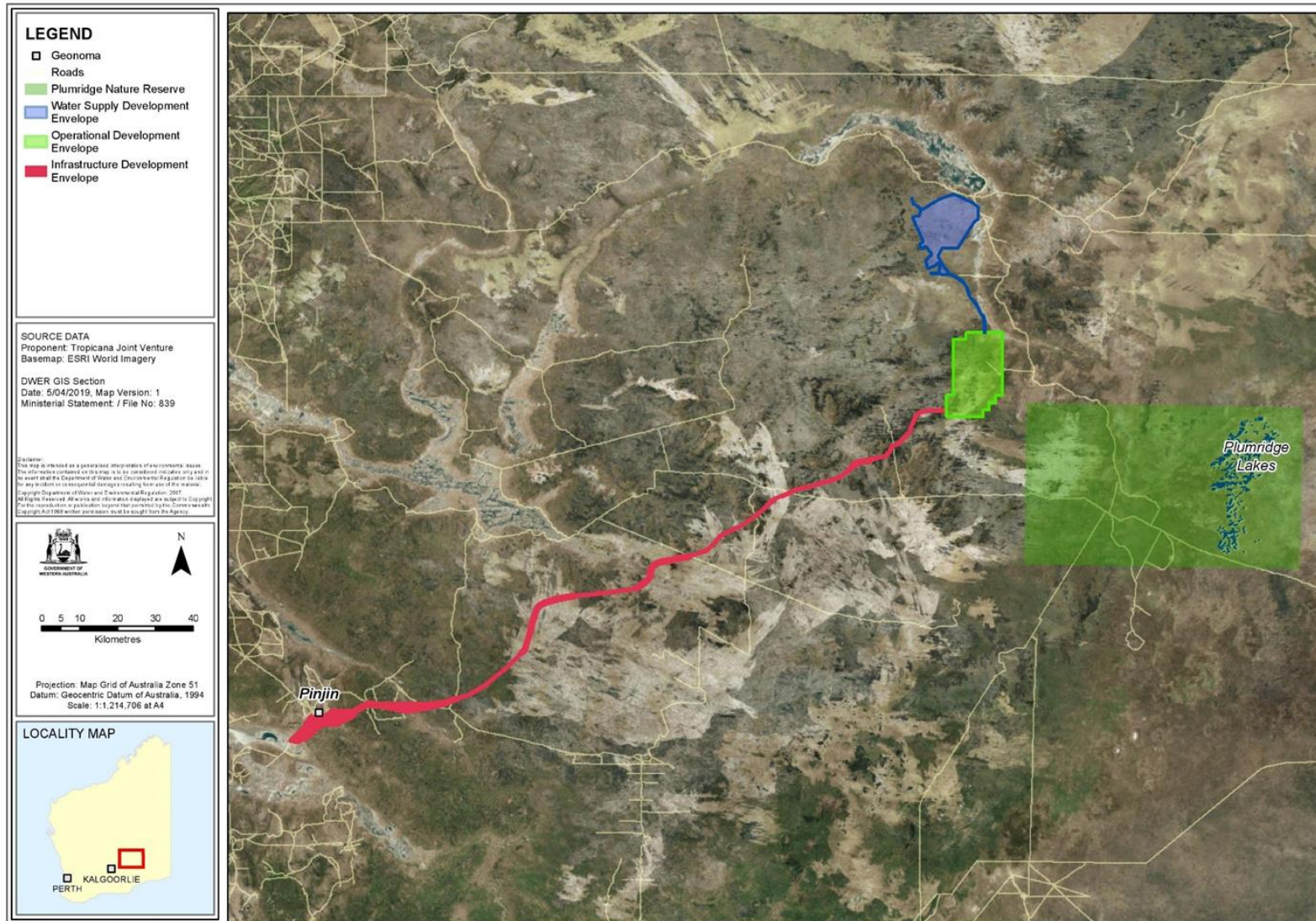


Figure 1: Tropical Gold Mine Development Envelopes

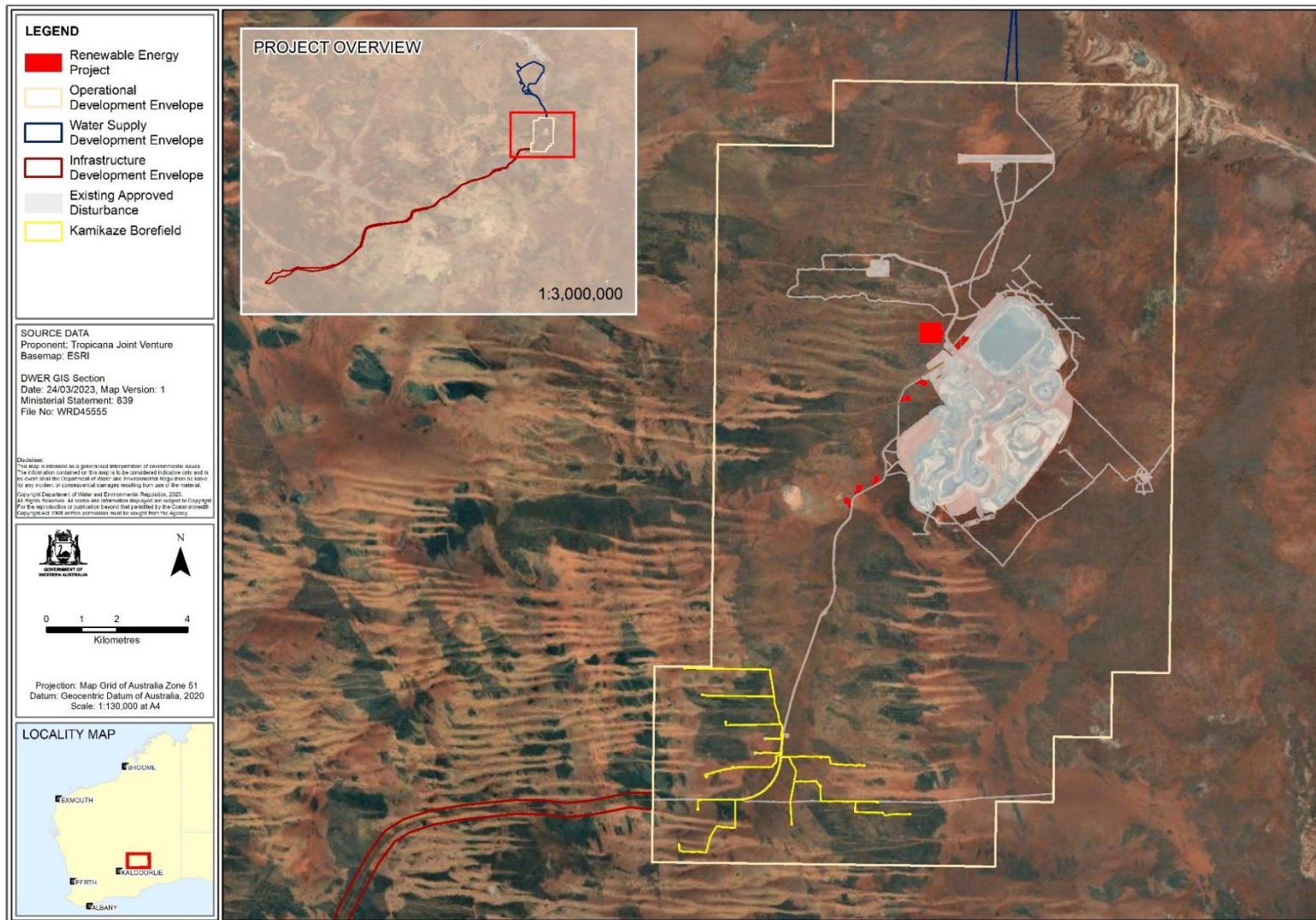


Figure 2: Operational Development Envelope

Attachment 8 to Ministerial Statement 839

Amendment to proposal approved under section 45C of the
Environmental Protection Act 1986

This Attachment replaces Schedule 1 and Attachments 1, 2, 3, 4, 5, 6 and 7 of Ministerial Statement 839

Proposal: Tropicana Gold Project, Shire of Menzies, Shire of Laverton and the City of Kalgoorlie-Boulder

Proponent: Tropicana Joint Venture (AngloGold Ashanti Australia Limited and Independence Group NL)

Changes:

- Single cell tailings storage facility with in-pit deposition.

Table 1: Summary of the proposal

Proposal title	Tropicana Gold Project, Shire of Menzies, Shire of Laverton and the City of Kalgoorlie-Boulder
Short description	The construction and operation of a gold mine utilising open-cut and underground mining methods, and associated infrastructure located approximately 330 km east northeast of Kalgoorlie and 200 km east of Laverton.

Table 2: Location and authorised extent of physical and operational elements

Element	Location	Previously authorised extent	Authorised extent
Physical elements			
Disturbance footprint	Figure 1	Not more than 3,650 ha comprising: <ul style="list-style-type: none"> • Operational area – 2,680 ha within 27,241 ha Operational Development Envelope. • Water supply area – 300 ha within 19,663 ha Water Supply Area Development Envelope. • Infrastructure areas – 670 ha within 18,494 ha 	Not more than 3,650 ha comprising: <ul style="list-style-type: none"> • Operational area – 2,680 ha within 27,241 ha Operational Development Envelope. • Water supply area – 300 ha within 19,663 ha Water Supply Area Development Envelope. • Infrastructure areas – 670 ha within 18,494 ha

Element	Location	Previously authorised extent	Authorised extent
		Infrastructure Development Envelope.	Infrastructure Development Envelope.
Open pit void	Figure 1	Not more than 420 ha in total	Not more than 420 ha in total
Waste landform	Figure 1	Not more than 1,200 ha. Maximum height 417 mRL including rehabilitation cover. Slope with maximum angle of 15 degrees	Not more than 1,200 ha. Maximum height 417 mRL including rehabilitation cover. Slope with maximum angle of 15 degrees
Mine access road	Figure 1	Pinjin Route – 370 km (~210 km of road construction)	Pinjin Route – 370 km (~210 km of road construction)
Aerodrome	Figure 1	All weather strip 2.4 km	All weather strip 2.4 km
Water pipeline	Figure 1	Approximately 50 km in length from the borefield (located north northwest of Operational Area) to process plant	Approximately 50 km in length from the borefield (located north northwest of Operational Area) to process plant
Tailings storage facility	Figure 1	Single-cell tailings storage facility with possible in-pit deposition	Single-cell tailings storage facility with in-pit deposition
Operational elements			
Overburden and waste		Not more than 800 mt placed in waste landforms	Not more than 800 mt placed in waste landforms
Water supply	Figure 2	Up to 9 GL/year with no more than 4 GL/year from the Kamikaze borefield	Up to 9 GL/year with no more than 4 GL/year from the Kamikaze borefield
Dewatering rate		1,000 to 5,000 kL/day	1,000 to 5,000 kL/day
Other elements which affect extent of effects on the environment			
Proposal time	Maximum project life	Approximately 15 years of mining; with mining ceasing in 2030 total project duration up to 25 years (including post closure monitoring)	Approximately 15 years of mining with mining ceasing in 2030; total project duration up to 25 years (including post closure monitoring)

Note: Text in **bold** in Table 2 indicates a change to the proposal.

Condition 11 is added

11-1 The proponent shall take measures to ensure that **net GHG emissions** do not exceed:

- (1) 740,000 tonnes of CO₂-e for the period between 1 January 2024 and 31 December 2026;
- (2) 320,000 tonnes of CO₂-e for the period between 1 January 2027 and 31 December 2029;
- (3) zero tonnes of CO₂-e from 1 January 2030 thereafter.

11-2 At least within six (6) months from Attachment 7 to Ministerial Statement 839 being issued, unless otherwise agreed by the **CEO**, the proponent shall develop and submit to the CEO, a Greenhouse Gas Emissions Environmental Management Plan to:

- (1) be consistent with the achievement of the **Net GHG Emission** limits in condition 11-1 (or the achievement of Net GHG Emissions reductions beyond those required by those limits);
- (2) specify the estimated proposal **GHG emissions** and **emissions intensity** for the proposal from the date Attachment 7 to Ministerial Statement 839 is issued;
- (3) include a comparison of the estimated proposal **GHG emissions** and **emissions intensity** for the proposal against other comparable facilities;
- (4) identify and describe any measures that the proponent will implement to avoid, reduce and/or offset **proposal GHG emissions** and/or reduce the **emissions intensity** of the proposal.
- (5) provide a program for the future review of the plan to:
 - (a) assess the effectiveness of measures referred to in condition 11-2(4);
and
 - (b) identify and describe options for future measures that the proponent may or could implement to avoid, reduce, and/or offset proposal **GHG emissions** and/or reduce the **emissions intensity** of the proposal.

11-3 The proponent:

- (1) may revise and submit to the **CEO** the **confirmed** Greenhouse Gas Emissions Environmental Management Plan at any time;
- (2) must revise and submit to the **CEO** the **confirmed** Greenhouse Gas Emissions Environmental Management Plan if there is a material risk that condition

11-1 will not be complied with, including but not limited to as a result of a change to the proposal;

11-4 The proponent shall implement the most recent version of the **confirmed** Greenhouse Gas Environmental Management Plan until the **CEO** has confirmed by notice in writing that it has been demonstrated that the net **GHG emission** limits in condition 11-1 have been met.

11-5 In accordance with condition 4-6 of Ministerial Statement 839 the proponent shall submit an annual report to the **CEO** each year by 24 December, commencing on the first 23 December after Attachment 7 to Ministerial Statement 839 is issued, or such other date within that financial year as is agreed by the **CEO** to align with other reporting requirements for GHG, specifying for the previous financial year:

- (1) the quantity of proposal **GHG emissions**; and
- (2) the **emissions intensity** for the proposal.

11-5 The proponent shall make the **confirmed** Greenhouse Gas Environmental Management Plan publicly available on the proponent’s website two (2) weeks of receiving written confirmation from the **CEO** as referred to in condition 11-2 or in any other manner or time specified by the **CEO**.

Table 3: Abbreviations

Abbreviation	Term
Authorised offsets	Units representing GHG emissions issued under one of the following schemes and cancelled or retired in accordance with any rules applicable at the relevant time governing the cancellation or retiring of units of that kind: (a) Australian Carbon Credit Units issued under the Carbon Credits (Carbon Farming Initiative) Act 2011 (Cth); (b) Verified Emission Reductions issued under the Gold Standard program; (c) Verified Carbon Units issued under the Verified Carbon Standard program; or other offset units that the Minister has notified the proponent in writing meet integrity principles and are based on clear, enforceable and accountable methods.
CEO	The Chief Executive Officer of the Department of the Public Service of the State responsible for the administration of section 48 of the Environmental Protection Act 1986, or the CEO’s delegate.
Confirmed	In relation to a plan required to be made and submitted to the CEO, means, at the relevant time, the plan that the CEO confirmed, by notice in writing, meets the requirements of the relevant condition. In relation to a plan required to be implemented without the need to be first submitted to the CEO, means that plan until it is revised, and then means, at

Abbreviation	Term
	the relevant time, the plan that the CEO confirmed, by notice in writing, meets the requirements of the relevant condition
Emissions intensity	Proposal GHG emissions per tonnes per annum of gold produced.
GL	Gigalitre
GL/year	Gigalitres per year
Greenhouse gas / GHG	Has the meaning given by Section 7A of the National Greenhouse and Energy Reporting Act 2007 (Cth) or, if that definition is amended or repealed, the meaning set out in an Act, regulation or instrument concerning greenhouse gases as specified by the Minister.
GHG emissions	Greenhouse gas emissions expressed in tonnes of carbon dioxide equivalent (CO ₂ -e) as calculated in accordance with the definition of 'carbon dioxide equivalence' in Section 7 of the National Greenhouse and Energy Reporting Act 2007 (Cth), or, if that definition is amended or repealed, the meaning set out in an Act, regulation or instrument concerning greenhouse gases as specified by the Minister.
ha	Hectare
kL/day	Kilolitres per day
km	Kilometre

Figures (attached)

Figure 1: Tropicana Gold Project Development Envelopes

Figure 2: Operational Development Envelope

Development Envelope Coordinates

Spatial data depicting the figures are held on Environment Online by the Department of Water and Environmental Regulation.

[Signed 22 March 2024]

Prof Matthew Tonts

CHAIR

Environmental Protection Authority

under delegated authority

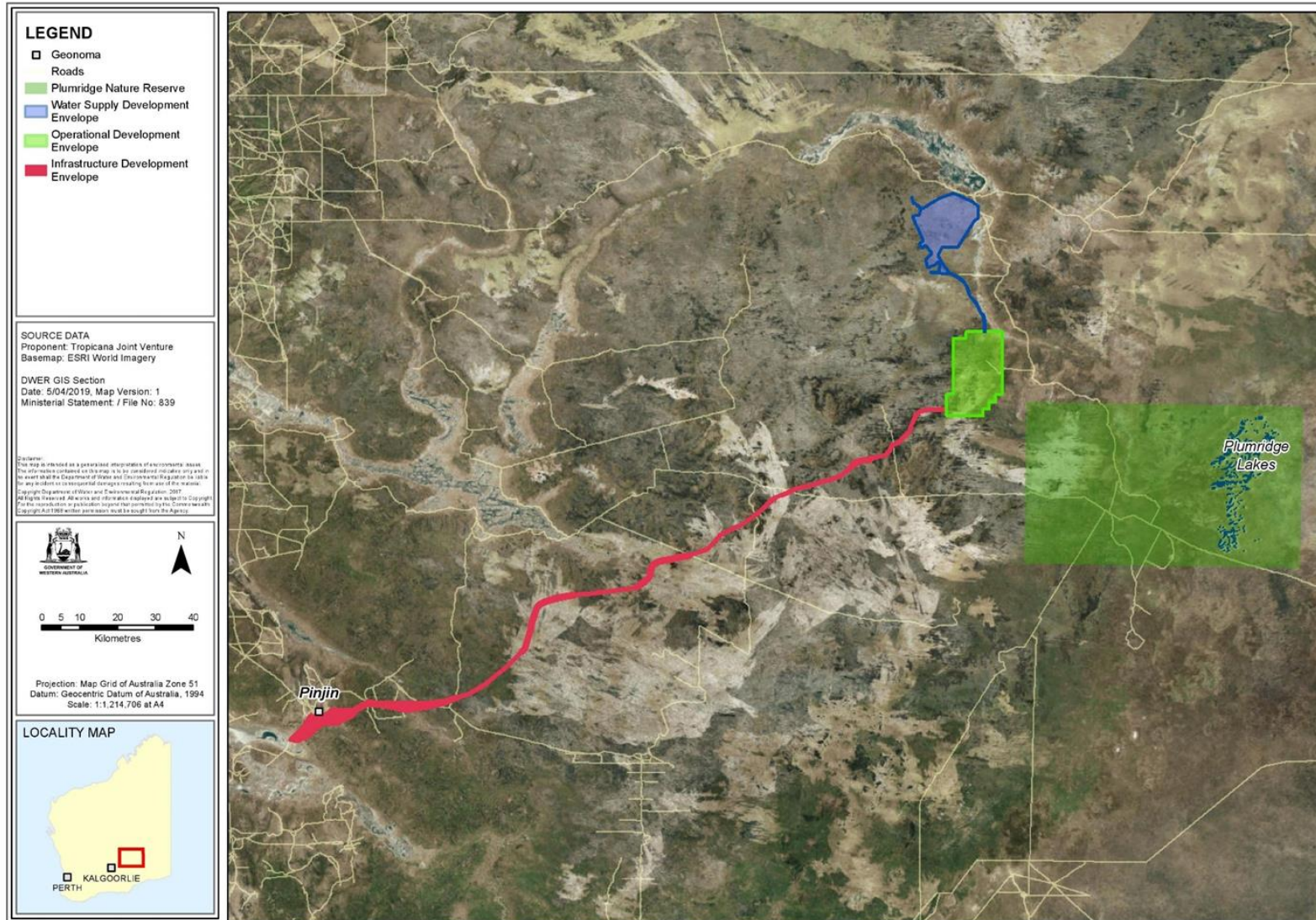


Figure 1: Tropical Gold Mine Development Envelopes

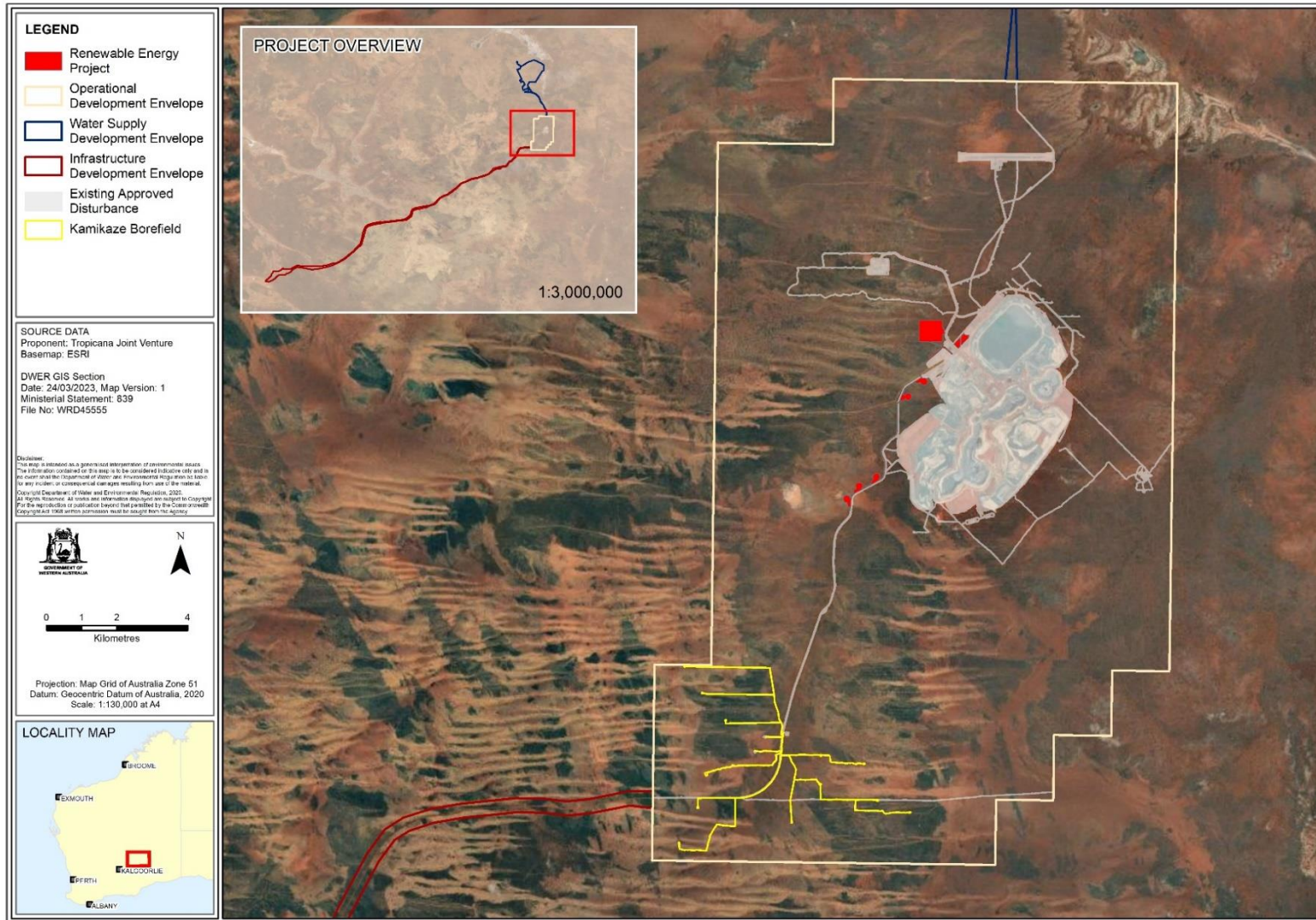


Figure 2: Operational Development Envelope

Attachment 9 to Ministerial Statement 839

Notice of amendment to implementation conditions approved under section 45C of the *Environmental Protection Act 1986*

TROPICANA GOLD PROJECT, SHIRE OF MENZIES, SHIRE OF LAVERTON AND THE CITY OF KALGOORLIE – BOULDER

Pursuant to section 45C(1)(c) of the *Environmental Protection Act 1986*, the implementation conditions applying to the above proposal are changed in accordance with this Notice. I do not consider these changes to be a significant amendment to the conditions.

LEE MCINTOSH
DEPUTY CHAIR
ENVIRONMENTAL PROTECTION AUTHORITY

For the Minister for Environment under Notice of Delegation under section 18 of the *Environmental Protection Act 1986*

Approval date: 23 August 2024

Condition 11 is deleted and replaced with:

11 Greenhouse Gas Emissions

11-1 The proponent shall take measures to ensure that **net GHG emissions** do not exceed:

- (1) 935,000 tonnes of CO₂-e for the period between 1 January 2024 and 31 December 2026;
- (2) 320,000 tonnes of CO₂-e for the period between 1 January 2027 and 31 December 2029;
- (3) zero tonnes of CO₂-e from 1 January 2030 thereafter.

11-2 At least within six (6) months from Attachment 7 to Ministerial Statement 839 being issued, unless otherwise agreed by the **CEO**, the proponent shall develop and submit to the **CEO**, a Greenhouse Gas Emissions Environmental Management Plan to:

- (1) be consistent with the achievement of the **Net GHG Emission** limits in condition 11-1 (or the achievement of Net GHG Emissions reductions beyond those required by those limits);

- (2) specify the estimated proposal **GHG emissions** and **emissions intensity** for the proposal from the date Attachment 7 to Ministerial Statement 839 is issued;
- (3) include a comparison of the estimated proposal **GHG emissions** and **emissions intensity** for the proposal against other comparable facilities;
- (4) identify and describe any measures that the proponent will implement to avoid, reduce and/or offset proposal **GHG emissions** and/or reduce the **emissions intensity** of the proposal;
- (5) provide a program for the future review of the plan to:
 - (a) assess the effectiveness of measures referred to in condition 11-2(4);
and
 - (b) identify and describe options for future measures that the proponent may or could implement to avoid, reduce, and/or offset proposal **GHG emissions** and/or reduce the **emissions intensity** of the proposal.

11-3 The proponent:

- (1) may revise and submit to the **CEO** the **confirmed** Greenhouse Gas Emissions Environmental Management Plan at any time;
- (2) must revise and submit to the **CEO** the **confirmed** Greenhouse Gas Environmental Management Plan if there is a material risk that condition 11-1 will not be complied with, including but not limited to as a result of a change to the proposal;

11-4 The proponent shall implement the most recent version of the **confirmed** Greenhouse Gas Environmental Management Plan until the **CEO** has confirmed by notice in writing that it has been demonstrated that the net **GHG emission** limits in condition 11-1 have been met.

11-5 In accordance with condition 4-6 of Ministerial Statement 839 the proponent shall submit an annual report to the **CEO** each year by 24 December, commencing on the first 23 December after Attachment 7 to Ministerial Statement 839 is issued, or such other date within that financial year as is agreed by the **CEO** to align with other reporting requirements for GHG, specifying for the previous financial year:

- (1) the quantity of proposal **GHG emissions**; and
- (2) the **emissions intensity** for the proposal.

11-6 The proponent shall make the **confirmed** Greenhouse Gas Environmental Management Plan publicly available on the proponent's website two (2) weeks

of receiving written confirmation from the **CEO** as referred to in condition 11-2 or in any other manner or time specified by the **CEO**.