



**MINISTER FOR THE ENVIRONMENT;  
LABOUR RELATIONS**

Statement No.

**000556**

**STATEMENT THAT A PROPOSAL MAY BE IMPLEMENTED  
(PURSUANT TO THE PROVISIONS OF THE  
ENVIRONMENTAL PROTECTION ACT 1986)**

**UPGRADING OF WESFARMERS LIQUEFIED PETROLEUM GAS PLANT  
MASON ROAD, KWINANA**

**Proposal:**

The upgrading of Wesfarmers liquefied petroleum gas plant at Mason Road, Kwinana, consisting of the construction of a parallel extraction plant that is capable of processing 120 terajoules per day of natural gas.

The upgrade coincides with a decrease in the concentration of liquefied petroleum gas in the natural gas feed stock. Liquefied petroleum gas production will remain at the current maximum production rate of approximately 845 tonnes per day, as documented in schedule 1 of this statement.

**Proponent:** Wesfarmers LPG Pty Ltd

**Proponent Address:** Mason Road, KWINANA WA 6167

**Assessment Number:** 1354

**Report of the Environmental Protection Authority:** Bulletin 993

The proposal to which the above report of the Environmental Protection Authority relates may be implemented subject to the following conditions and procedures:

**1 Implementation**

- 1-1 Subject to these conditions and procedures, the proponent shall implement the proposal as documented in schedule 1 of this statement.

Published on

**31 OCT 2000**

- 1-2 Where the proponent seeks to change any aspect of the proposal as documented in schedule 1 of this statement in any way that the Minister for the Environment determines, on advice of the Environmental Protection Authority, is substantial, the proponent shall refer the matter to the Environmental Protection Authority.
- 1-3 Where the proponent seeks to change any aspect of the proposal as documented in schedule 1 of this statement in any way that the Minister for the Environment determines, on advice of the Environmental Protection Authority, is not substantial, those changes may be effected.

## **2 Proponent Commitments**

- 2-1 The proponent shall implement the consolidated environmental management commitments documented in schedule 2 of this statement.
- 2-2 The proponent shall implement subsequent environmental management commitments which the proponent makes as part of the fulfilment of conditions and procedures in this statement.

## **3 Proponent**

- 3-1 The proponent for the time being nominated by the Minister for the Environment under section 38(6) or (7) of the Environmental Protection Act 1986 is responsible for the implementation of the proposal until such time as the Minister for the Environment has exercised the Minister's power under section 38(7) of the Act to revoke the nomination of that proponent and nominate another person in respect of the proposal.
- 3-2 Any request for the exercise of that power of the Minister referred to in condition 3-1 shall be accompanied by a copy of this statement endorsed with an undertaking by the proposed replacement proponent to carry out the proposal in accordance with the conditions and procedures set out in the statement.
- 3-3 The proponent shall notify the Department of Environmental Protection of any change of proponent contact name and address within 30 days of such change.

## **4 Commencement**

- 4-1 The proponent shall provide evidence to the Minister for the Environment within five years of the date of this statement that the proposal has been substantially commenced.
- 4-2 Where the proposal has not been substantially commenced within five years of the date of this statement, the approval to implement the proposal as granted in this statement shall lapse and be void. The Minister for the Environment will determine any question as to whether the proposal has been substantially commenced.
- 4-3 The proponent shall make application to the Minister for the Environment for any extension of approval for the substantial commencement of the proposal beyond five years from the date of this statement at least six months prior to the expiration of the five year period referred to in conditions 4-1 and 4-2.

- 4-4 Where the proponent demonstrates to the requirements of the Minister for the Environment on advice of the Environmental Protection Authority that the environmental parameters of the proposal have not changed significantly, then the Minister may grant an extension not exceeding five years for the substantial commencement of the proposal.

## **5 Decommissioning Plans**

- 5-1 Prior to commissioning of the upgraded plant, the proponent shall prepare a Preliminary Decommissioning Plan that provides the framework to ensure that the site is left in a suitable condition, with no liability to the State, to the requirements of the Environmental Protection Authority on advice of the Department of Environmental Protection.

The Preliminary Decommissioning Plan shall address:

- 1 rationale for the siting and design of the upgraded section of plant and infrastructure and conceptual plans for its removal or, if appropriate, retention;
  - 2 conceptual rehabilitation plans for all disturbed areas and a process to agree on the end land use(s); and
  - 3 management of noxious materials to avoid the creation of contaminated areas.
- 5-2 At least six months prior to the anticipated date of decommissioning, or at a time agreed with the Department of Environmental Protection, the proponent shall prepare a Final Decommissioning Plan designed to ensure that the site is left in a suitable condition, with no liability to the State, to the requirements of the Environmental Protection Authority on advice of the Department of Environmental Protection.

The Final Decommissioning Plan shall address:

- 1 removal or, if appropriate, retention of plant and infrastructure;
  - 2 rehabilitation of all disturbed areas to a standard suitable for the agreed new land use(s); and
  - 3 identification of contaminated areas, including provision of evidence of notification to relevant statutory authorities.
- 5-3 The proponent shall implement the Final Decommissioning Plan required by condition 5-2 until such time as the Minister for the Environment determines that decommissioning is complete.
- 5-4 The proponent shall make the Final Decommissioning Plan required by condition 5-2 publicly available, to the requirements of the Environmental Protection Authority.

## **6 Compliance Auditing**

- 6-1 The proponent shall submit periodic Compliance Reports, in accordance with an audit program prepared in consultation between the proponent and the Department of Environmental Protection.

- 6-2 Unless otherwise specified, the Chief Executive Officer of the Department of Environmental Protection is responsible for assessing compliance with the conditions, procedures and commitments contained in this statement and for issuing formal, written advice that the requirements have been met.
- 6-3 Where compliance with any condition, procedure or commitment is in dispute, the matter will be determined by the Minister for the Environment.

**Note**

- 1 The proponent is required to apply for a Works Approval and Licence for this project under the provisions of Part V of the Environmental Protection Act.



CHERYL EDWARDES (Mrs) MLA  
MINISTER FOR THE ENVIRONMENT

31 OCT 2000

## **Schedule 1**

### **The Proposal (1354)**

The proposal is to upgrade the existing Wesfarmers liquefied petroleum gas (LPG) plant at Mason Road, Kwinana by the addition of a parallel LPG extraction section. The additional section is to be constructed at the north end of the existing process plant as shown in Figure 1 (attached).

The extraction process for the upgraded plant is the same as that used in the existing plant. The new parallel LPG extraction section has a maximum design natural gas flow of 120 terajoules per day.

The plant upgrade will allow the natural gas flow-rate to the LPG plant to be increased by approximately 25%. The additional natural gas is required by the proponent to maintain current LPG production levels, since in the near future the concentration of LPG in the contracted natural gas supply will decrease. The LPG production will remain essentially the same, therefore requiring no additional LPG storage (refrigerated or pressurised), loading facilities or transport.

The main characteristics of the proposal are summarised in Table 1. They provide an outline of the proposal and should not be viewed as restricting improvements in environmental outcomes.

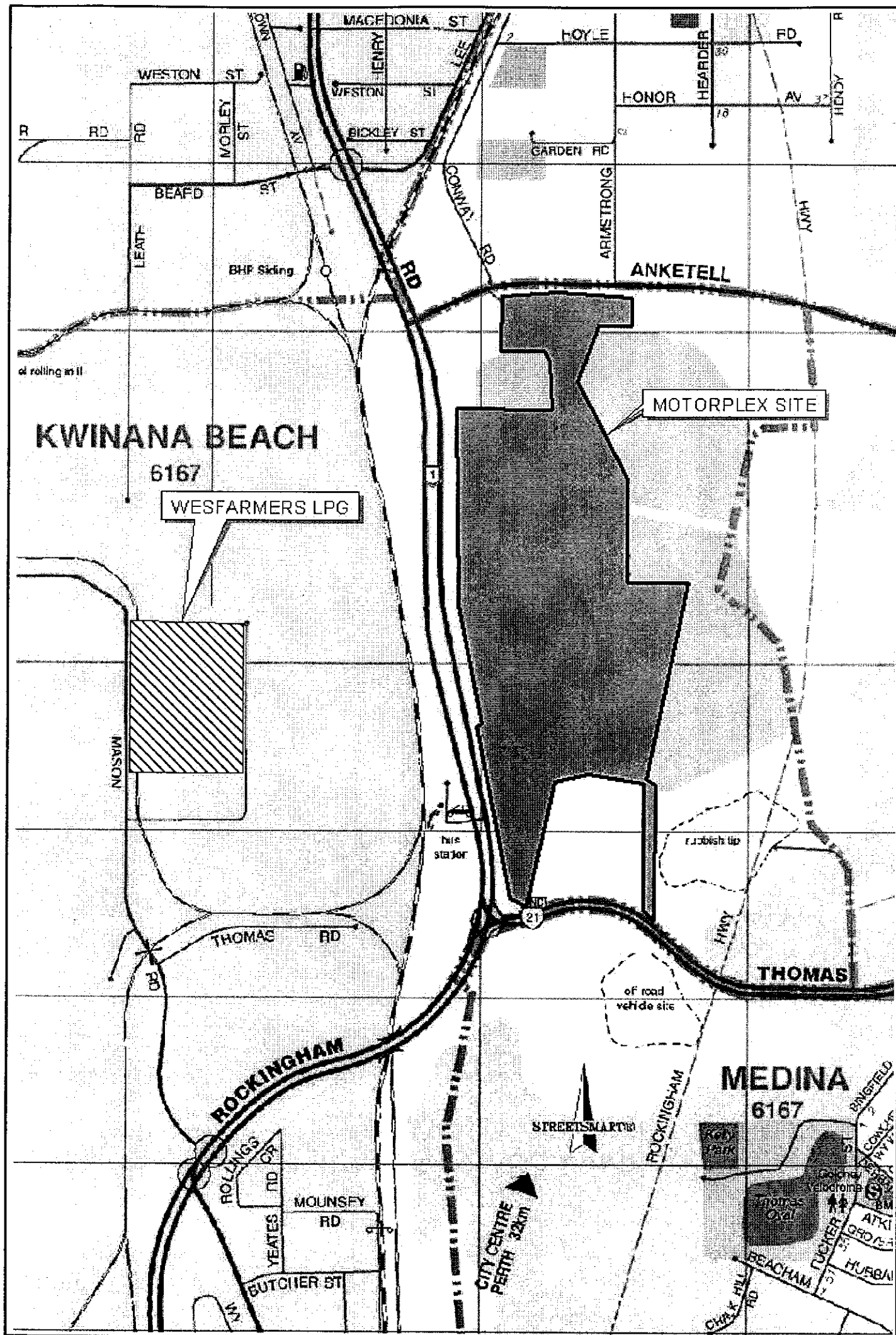


Figure 1. Location of Wesfarmers LPG Plant

**Table 1: Summary of key proposal characteristics (1354)**

Element	Description
Project purpose	To upgrade the existing LPG plant by the addition of a parallel extraction plant. The plant upgrade will allow a nominal increase of 25% feed gas flow and enable the proponent to maintain existing production rates of LPG, after the concentration of LPG in natural gas is reduced.
Plant Location	Mason Road, Kwinana. The additional plant is directly adjacent to the north end of existing process plant.
Plant site area	The site area is approximately 1200 square metres which is 20% of the total process area.
New plant equipment	<ol style="list-style-type: none"> <li>1. Turbo expander / compressor.</li> <li>2. Aluminium plate fin heat exchangers (2 units).</li> <li>3. Gas turbine driven gas centrifugal re-compressor.</li> <li>4. Absorber distillation column.</li> <li>5. De-ethaniser distillation column.</li> <li>6. Cold separator vessel.</li> <li>7. Re-compressor scrubber vessel.</li> <li>8. De-ethaniser feed centrifugal pumps (2 units).</li> <li>9. De-ethaniser kettle type reboiler.</li> <li>10. Residue gas air cooler.</li> </ol>
Plant operation	Continuous – up to 24 hours per day, 365 days per year.
Plant storage capacities:	
Propane	No increase. (48,000 kilolitres refrigerated storage, 625 kilolitres pressure storage.)
Butane	No increase. (24,000 kilolitres refrigerated storage, 625 kilolitres pressure storage.)
Condensate	No increase. (136 kilolitres pressure storage.)
Ethyl Mercaptan	No increase. (3.6 kilolitres pressure storage.)
Plant inputs:	
Natural gas feed stock	Nominal increase of 25% to approximately 500 terajoules per day.
Natural gas consumption	Nominal increase of 19% to approximately 30,200 tonnes per annum.
Electricity consumption	Nominal increase of 8% to approximately 4.3 MW.
Production capacity:	
LPG	Nominally 845 tonnes per day.
Condensate	Nominally 30,000 tonnes per annum.
Plant Emissions:	
Carbon monoxide	Increased by 4% to approximately 23 tonnes per annum.
Carbon dioxide	Increased by 19% to approximately 77,600 tonnes per annum.
Oxides of nitrogen	Increased by 6% to approximately 435 tonnes per annum.
Liquid waste	No increase.
Solid waste	No increase.
Noise emissions	No significant increase.
Risk	No net increase in off-site risk following implementation of risk reduction measures arising from approved Quantitative Risk Assessment.

**Proponent's Consolidated Environmental Management  
Commitments**

26 October 2000

**UPGRADING OF WESFARMERS LIQUEFIED  
PETROLEUM GAS PLANT,  
MASON ROAD, KWINANA (1354)**

**WESFARMERS LPG PTY LTD**

## Schedule 2

### Proponent's Consolidated Commitments - Upgrading of Wesfarmers LPG Plant, Mason Road, Kwinana (1354)

No	Topic	Action	Objective	Timing	Advice
1	Risk	Provide a QRA to the satisfaction of the DEP and DME for the existing plant and the expansion.	To demonstrate that the EPA's Individual Risk from Hazardous Plants will be met. Any net increase above current off-site individual risk levels as a result of the plant upgrade will be offset through a real reduction in risk in the existing plant.	Prior to commissioning the new LPG extraction section.	DEP/DME
2	Risk	Implement the risk reduction measures identified in the risk assessment to achieve no net increase in risk and meet the "As Low As Reasonably Practical" (ALARP) principle.	To reduce off-site individual risk.	Within a time frame approved by the DEP/DME.	DEP/DME
3	Risk	Consult with BHP on the results of the QRA, including provision of a summary of results of the QRA.	To ensure that BHP and any future occupiers of BHP land is aware of the exceedance.	Prior to commissioning the new LPG extraction section.	
4	Risk	Update the Safety Report to incorporate the outcomes of the QRA, HAZOP of the new facilities and the latest plant audits.	Ensure the current safety standards are maintained.	As agreed with DME.	DME
5	Noise	Develop a Noise Reduction Management Plan for the gas extraction plant. The plan will be a comprehensive action plan that specifies the noise reduction measures.	To determine a strategy to reduce noise emissions from major noise sources in the plant to the DEP's satisfaction.	Plan completed by 31 December 2000.	DEP

6	Noise	Implement the Noise Reduction Management Plan.	To achieve compliance with the Environmental Protection (Noise) Regulations 1997 or to reduce noise emissions to as low as reasonably practicable.	(a) For practicable noise reduction measures, within 12 months of commissioning. (b) Other noise reduction measures, within a time frame agreed with the DEP.	DEP
7	Noise	Conduct a noise signature analysis of the plant at the nearest residence in Medina and implement noise reduction measures.	To achieve compliance with the Environmental Protection (Noise) Regulations 1997 or to reduce noise emissions to as low as reasonably practicable.	(a) For practicable noise reduction measures, within 12 months of commissioning. (b) Other noise reduction measures, within a time frame agreed with the DEP.	DEP
8	Noise	Participate and be actively involved in the Kwinana Industries Council's cumulative noise impact study.	To reduce cumulative noise impacts from Kwinana Industrial Area.	As required until completion of the study.	DEP

9	Gas Emissions	Install NOx reduction equipment on the gas turbine for the new parallel extraction section and operate the gas turbine such that it meets the AEC/NHMRC (1985) National Guidelines for the Control of Emissions of Air Pollutants from New Stationary Sources.	To reduce emissions of NOx to atmosphere.	Within a time frame approved by the DEP.	DEP
10	Gas Emissions	Minimise discharges from the accidental release of hydrocarbons and PSV emissions, including flaring.	To achieve "best practice" for the plant.	Within a time frame approved by DEP.	DEP/DME

**Abbreviations:**

AEC/NHMRC = Australian Environmental Council / National Health and Medical Research Council.

DEP = Department of Environmental Protection.

DME = Department of Minerals and Energy.

EPA = Environmental Protection Authority.

LPG = Liquefied Petroleum Gas.

NOx = Oxides of nitrogen.

PSV = Pressure safety valve.

QRA = Quantitative Risk Assessment.

## Attachment 1 to Ministerial Statement 556

### Change to proposal approved under section 45C of the *Environmental Protection Act 1986*

This Attachment replaces Schedule 1 of Ministerial Statement 556

**Proposal:** Upgrading of Wesfarmers Liquefied Petroleum Gas Plant, Mason Road, Kwinana

**Proponent:** Wesfarmers LPG Pty Ltd

#### Changes:

- Update 'Short Description' in Table 1.
- Remove description of elements from Table 2 which are duplicated in Table 1: Summary of the Proposal.
- Increase to plant pressure storage capacities for Propane, Butane and Condensate.
- Amalgamation of LPG and Condensate storage capacities.
- Increase in carbon dioxide emissions.
- Remove elements which are not considered to be key characteristics relevant to the environment.
- Remove elements which are managed under other appropriate legislation and regulations.

**Table 1: Summary of the Proposal**

Proposal Title	LPG Plant Upgrade
Short Description	Wesfarmers Liquefied Petroleum Gas (LPG) is located off Mason Road, Kwinana. The original proposal in 2000 involved upgrading the LPG plant by the addition of a parallel extraction plant, directly adjacent to the north end of the existing process plant. The plant upgrade allowed an increase in feed gas flow enabling the proponent to maintain existing production rates of LPG, coinciding with a decrease in the concentration of LPG in the natural gas feed stock.

**Table 2: Key Proposal Characteristics**

Element	Previously Authorised Extent	Authorised Extent
Project Purpose	To upgrade the existing LPG plant by the addition of a parallel extraction plant. The plant upgrade will allow a nominal increase of 25% feed gas flow and enable the proponent to maintain existing production rates of LPG, after the concentration of LPG in natural gas is reduced.	<b>Removed as this detail has been included in Table 1: Summary of the Proposal.</b>
Plant Location	Mason Road, Kwinana. The additional plant is directly adjacent to the north end of existing process plant.	<b>Removed as this detail has been included in Table 1: Summary of the Proposal and presented in Figure 1 – Site location.</b>

Element	Previously Authorised Extent	Authorised Extent
Plant Site Area	The site area is approximately 1200 square metres which is 20% of the total process area.	<b>Removed as this area is presented in Figure 2 – LPG Plant and Storage Areas.</b>
<b>Plant Equipment</b> (formerly New plant equipment)	<ol style="list-style-type: none"> <li>1. Turbo expander/compressor.</li> <li>2. Aluminium plate fin heat exchangers (2 units).</li> <li>3. Gas turbine driven gas centrifugal re-compressor.</li> <li>4. Absorber distillation column.</li> <li>5. De-ethaniser distillation column.</li> <li>6. Cold separator vessel.</li> <li>7. Re-compressor scrubber vessel.</li> <li>8. De-ethaniser feed centrifugal pumps (2 units).</li> <li>9. De-ethaniser kettle type reboiler.</li> <li>10. Residue gas air cooler.</li> </ol>	<ol style="list-style-type: none"> <li>1. Turbo expander/compressor.</li> <li>2. Aluminium plate fin heat exchangers (2 units).</li> <li>3. Gas turbine driven gas centrifugal re-compressor.</li> <li>4. Absorber distillation column.</li> <li>5. De-ethaniser distillation column.</li> <li>6. Cold separator vessel.</li> <li>7. Re-compressor scrubber vessel.</li> <li>8. De-ethaniser feed centrifugal pumps (2 units).</li> <li>9. De-ethaniser kettle type reboiler.</li> <li>10. Residue gas air cooler.</li> </ol>
Plant Operation	Continuous – up to 24 hours per day, 365 days per year.	<b>Removed as not a key characteristic relevant to the environment.</b>
Plant Storage Capacities:		
Propane / <b>LPG</b>	No increase. (48,000 kilolitres refrigerated storage, 625 kilolitres pressure storage.)	48,000 kilolitres refrigerated storage, <b>1,625 kilolitres pressure storage.</b>
Butane / <b>LPG</b>	No increase. (24,000 kilolitres refrigerated storage, 625 kilolitres pressure storage.)	24,000 kilolitres refrigerated storage, <b>1,625 kilolitres pressure storage.</b>
Condensate	No increase. (136 kilolitres pressure storage.)	<b>1,136 kilolitres pressure storage.</b>
Ethyl Mercaptan	No increase. (3.6 kilolitres pressure storage.)	3.6 kilolitres pressure storage.
Plant Inputs:		
Natural gas feed stock	Nominal increase of 25% to approximately 500 terajoules per day.	<b>Removed as not a key characteristic relevant to the environment.</b>
Natural gas consumption	Nominal increase of 19% to approximately 30,200 tonnes per annum.	<b>Removed as not a key characteristic relevant to the environment.</b>
Electricity consumption	Nominal increase of 8% to approximately 4.3MW.	<b>Removed as not a key characteristic relevant to the environment.</b>

Element	Previously Authorised Extent	Authorised Extent
Production Capacity: LPG Condensate	Nominally 845 tonnes per day. Nominally 30,000 tonnes per annum.	<b>Combined LPG and Condensate Up to 350,000 tonnes per annum.</b>
Net Plant Emissions:		
Carbon monoxide	Increased by 4% to approximately 23 tonnes per annum.	<b>Up to 23 tonnes per annum.</b>
Carbon dioxide	Increased by 19% to approximately 77,600 tonnes per annum.	<b>Up to 85,360 tonnes per annum.</b>
Oxides of nitrogen	Increased by 6% to approximately 435 tonnes per annum.	<b>Up to 435 tonnes per annum.</b>
Liquid waste	No increase.	<b>Removed as liquid waste and hazardous solid waste is managed under the <i>Environmental Protection (Controlled Waste) Regulations 2004</i></b>
Solid waste	No increase.	
Noise Emissions	No significant increase.	<b>Removed as noise emissions are managed under the <i>Environmental Protection (Noise) Regulations 1997</i>.</b>
Risk	No net increase in off-site risk following implementation of risk reduction measures arising from approved Quantitative Risk Assessment.	<b>Removed as risk is managed under the <i>Dangerous Goods Safety (Major Hazard Facilities) Regulations 2007</i>, administered by the Department of Mines, Industry Regulation and Safety.</b>

Note: Text in **bold** in Table 2 indicates a change to the proposal.

**Figures – All previous figures are replaced by the following:**

Figure 1 – Site Location

Figure 2 – LPG Plant and Storage Areas

[Signed 13 August 2018]

Hon Stephen Dawson MLC  
**MINISTER FOR ENVIRONMENT**

Approval date: \_\_\_\_\_

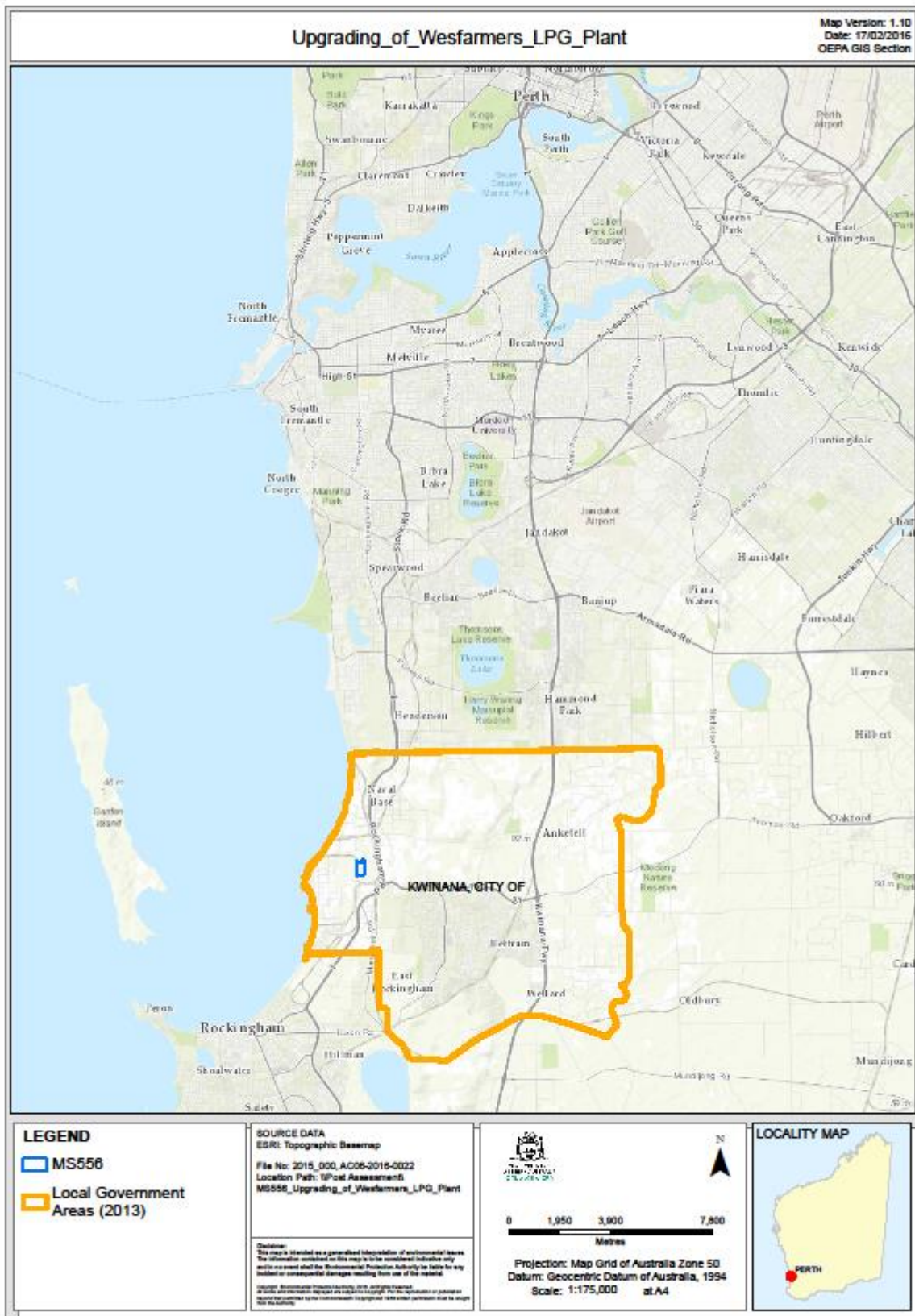


Figure 1 – Site Location

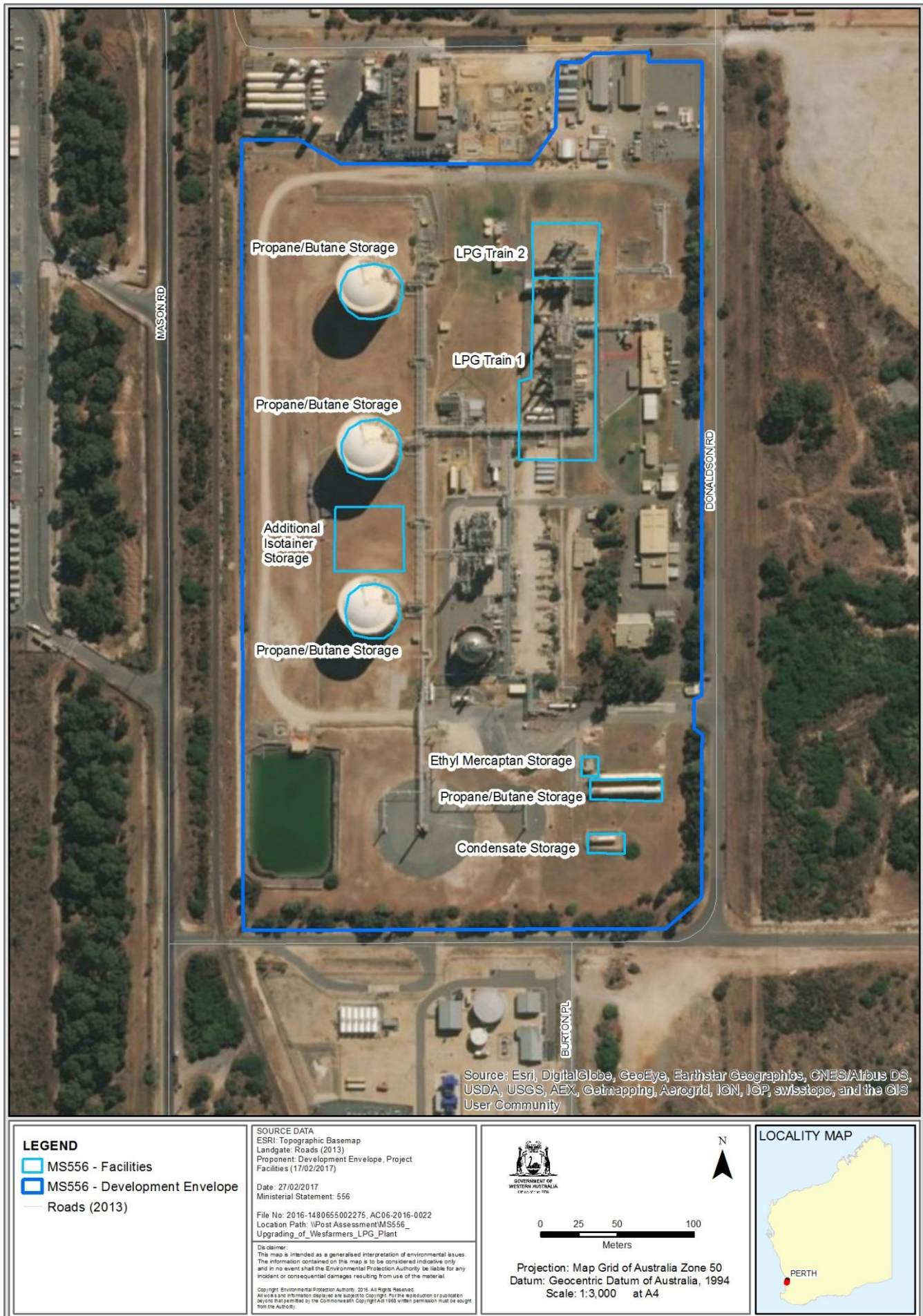


Figure 2 – LPG Plant and Storage Areas

## Attachment 2 to Ministerial Statement 556

### Change to proposal approved under section 45C of the *Environmental Protection Act 1986*

This Attachment replaces Schedule 1 and Attachment 1 of Ministerial Statement 556

**Proposal: Upgrading of Wesfarmers Liquefied Petroleum Gas Plant, Mason Road, Kwinana**

**Proponent: Wesfarmers LPG Pty Ltd**

#### Changes:

- Remove element "Plant Storage Capacities", which are managed under other appropriate legislation.

**Table 1: Summary of the Proposal**

Proposal Title	LPG Plant Upgrade
Short Description	Wesfarmers Liquefied Petroleum Gas (LPG) is located off Mason Road, Kwinana. The original proposal in 2000 involved upgrading the LPG plant by the addition of a parallel extraction plant, directly adjacent to the north end of the existing process plant. The plant upgrade allowed an increase in feed gas flow enabling the proponent to maintain existing production rates of LPG, coinciding with a decrease in the concentration of LPG in the natural gas feed stock.

**Table 2: Location and authorised extent of physical and operational elements**

Element	Previously Authorised Extent	Authorised Extent
Plant Equipment (formerly New plant equipment)	<ol style="list-style-type: none"><li>1. Turbo expander/compressor.</li><li>2. Aluminium plate fin heat exchangers (2 units).</li><li>3. Gas turbine driven gas centrifugal re-compressor.</li><li>4. Absorber distillation column.</li><li>5. De-ethaniser distillation column.</li><li>6. Cold separator vessel.</li><li>7. Re-compressor scrubber vessel.</li><li>8. De-ethaniser feed centrifugal pumps (2 units).</li><li>9. De-ethaniser kettle type reboiler.</li><li>10. Residue gas air cooler.</li></ol>	<ol style="list-style-type: none"><li>1. Turbo expander/compressor.</li><li>2. Aluminium plate fin heat exchangers (2 units).</li><li>3. Gas turbine driven gas centrifugal re-compressor.</li><li>4. Absorber distillation column.</li><li>5. De-ethaniser distillation column.</li><li>6. Cold separator vessel.</li><li>7. Re-compressor scrubber vessel.</li><li>8. De-ethaniser feed centrifugal pumps (2 units).</li><li>9. De-ethaniser kettle type reboiler.</li><li>10. Residue gas air cooler.</li></ol>
Plant Storage Capacities:  Propane / LPG	  48,000 kilolitres refrigerated storage, 1,625 kilolitres pressure storage.	<b>Removed as plant storage capacities are managed under the <i>Dangerous Goods Safety Act 2004</i>, administered by the Department of Mines, Industry Regulation and Safety.</b>

Element	Previously Authorised Extent	Authorised Extent
Butane / LPG	24,000 kilolitres refrigerated storage 1,625 kilolitres pressure storage.	
Condensate	1,136 kilolitres pressure storage.	
Ethyl Mercaptan	3.6 kilolitres pressure storage.	
Production Capacity:		
LPG Condensate	Combined LPG and Condensate Up to 350,000 tonnes per annum.	Combined LPG and Condensate Up to 350,000 tonnes per annum.
Net Plant Emissions:		
Carbon monoxide	Up to 23 tonnes per annum.	Up to 23 tonnes per annum.
Carbon dioxide	Up to 85,360 tonnes per annum.	Up to 85,360 tonnes per annum.
Oxides of nitrogen	Up to 435 tonnes per annum.	Up to 435 tonnes per annum.

Note: Text in **bold** in Table 2 indicates a change to the proposal.

**Figures – All previous figures are replaced by the following:**

Figure 1 – Regional location

Figure 2 – LPG Plant

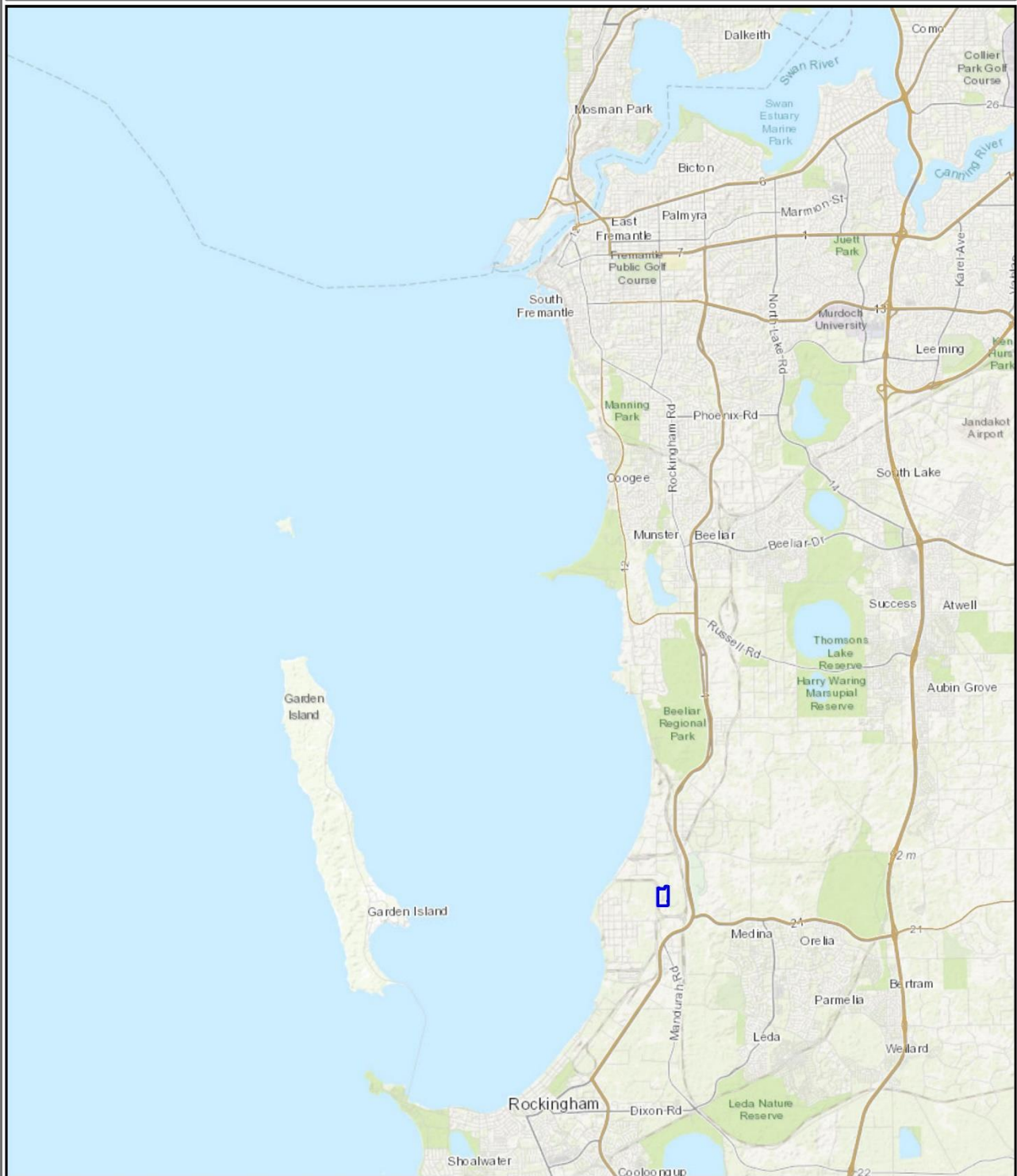
[Signed 26 March 2019]

**Dr Tom Hatton**

CHAIRMAN

Environmental Protection Authority  
under delegated authority

# MS556 Upgrade of Wesfarmers LPG Plant Overview



## LEGEND

- Major Roads
- Development Envelope

**SOURCE DATA**  
 Proponent: Wesfarmers LPG Pty Ltd  
 Basemap: BaseMap World Imagery

**DWER GIS Section**  
 Date: 5/02/2019, Map Version: 123  
 Ministerial Statement: 556

Disclaimer:  
 This map is intended as a generalised interpretation of environmental issues.  
 The information contained on this map is to be considered indicative only and in  
 no event shall the Department of Water and Environmental Regulation be liable  
 for any incident or consequential damages resulting from use of the material.  
 Copyright Department of Water and Environmental Regulation, 2019.  
 All Rights Reserved. All works and information displayed are subject to Copyright.  
 For the reproduction or publication beyond that permitted by the Commonwealth  
 Copyright Act 1969 written permission must be sought from the Agency.



0 1,550 3,100 6,200  
 Meters

Projection: Map Grid of Australia Zone 50  
 Datum: Geocentric Datum of Australia, 1994  
 Scale: 1:150,000 at A4

## LOCALITY MAP



S:\Projects\EIA\38\URI\_UpgradeOfWesfarmersLPGPlant\5\_PostAssessment\A1\_UpgradeLPGPlant\20190205\_MS556\_Upgrade\_of\_Wesfarmers\_LPG\_Plant\_Overview.mxd

Unique Record ID:

**Figure 1: Regional location**

# MS556 Upgrade of Wesfarmers LPG Plant Detail



## LEGEND

- Roads
- Activity Areas
- Development Envelope

**SOURCE DATA**  
Proponent: Wesfarmers LPG Pty Ltd  
Basemap: BaseMap World Imagery

**DWER GIS Section**  
Date: 5/02/2019, Map Version: 123  
Ministerial Statement: 556

Disclaimer:  
This map is intended as a generalised interpretation of environmental issues.  
The information contained on this map is to be considered indicative only and in no event shall the Department of Water and Environmental Regulation be liable for any incident or consequential damage resulting from use of the material.  
Copyright Department of Water and Environmental Regulation, 2019.  
All Rights Reserved. All works and information displayed are subject to Copyright.  
For the reproduction or publication beyond that permitted by the Commonwealth Copyright Act 1968 written permission must be sought from the Agency.



0 90 180 360  
Meters

Projection: Map Grid of Australia Zone 50  
Datum: Geocentric Datum of Australia, 1994  
Scale: 1:8,846 at A4

## LOCALITY MAP



S:\Projects\EIA\38\IURI\_UpgradeOfWesfarmersLPGPlant\6\_PosAssessment\A81\_UpgradeLPGPlant\20190206\_MS556\_Upgrade\_of\_Wesfarmers\_LPG\_Plant\_Detail.mxd

Unique Record ID:

**Figure 2: LPG Plant**