

**THIS DOCUMENT**

This document has been produced by the Office of the Appeals Convenor as an electronic version of the original Statement for the proposal listed below as signed by the Minister and held by this Office. Whilst every effort is made to ensure its accuracy, no warranty is given as to the accuracy or completeness of this document.

The State of Western Australia and its agents and employees disclaim liability, whether in negligence or otherwise, for any loss or damage resulting from reliance on the accuracy or completeness of this document.

Copyright in this document is reserved to the Crown in right of the State of Western Australia.

Reproduction except in accordance with copyright law is prohibited.

Published on: 3 October 2017

Statement No. 1062

**STATEMENT THAT A REVISED PROPOSAL MAY BE IMPLEMENTED**  
***(Environmental Protection Act 1986)***

**SOLOMON IRON ORE PROJECT – SUSTAINING PRODUCTION**

**Proposal:** Proposal to develop and operate the Solomon Iron Ore Mine, located approximately 60 kilometres north of Tom Price, including the Southern Borefield and Lower Fortescue Borefield, and operate the existing Hamersley Rail line.

The proposal is a revision of the Solomon Iron Ore Project, the subject of Statement No. 862 dated 20 April 2011.

**Proponent:** Fortescue Metals Group Limited  
Australian Company Number 002 594 872

**Proponent Address:** Level 2, 87 Adelaide Terrace  
EAST PERTH WA 6004

**Assessment Number:** 2019

**Report of the Environmental Protection Authority:** 1588

**Previous Report of the Environmental Protection Authority:** 1386

**Previous Statement Number:** 862

Pursuant to section 45, read with section 45B of the *Environmental Protection Act 1986*, it has been agreed that:

1. the revised proposal described and documented in Schedule 1 may be implemented;
2. the implementation of the revised proposal, being the *Solomon Iron Ore Project* as amended, is subject to the following implementation conditions: and

3. from the date of this Statement, each of the implementation conditions in Statement 862 no longer apply in relation to the revised proposal.

## **1 Proposal Implementation**

- 1-1 When implementing the Revised Proposal, the proponent shall not exceed the authorised extent of the Revised Proposal as defined in Table 2 in Schedule 1, unless amendments to the Revised Proposal and the authorised extent of the Revised Proposal have been approved under the EP Act.

## **2 Contact Details**

- 2-1 The proponent shall notify the CEO of any change of its name, physical address or postal address for the serving of notices or other correspondence within twenty-eight (28) days of such change. Where the proponent is a corporation or an association of persons, whether incorporated or not, the postal address is that of the principal place of business or of the principal office in the State.

## **3 Compliance Reporting**

- 3-1 The proponent shall prepare, submit and maintain a Compliance Assessment Plan to the CEO at least six (6) months prior to the first Compliance Assessment Report required by condition 3-6.
- 3-2 The Compliance Assessment Plan shall indicate:
  - (1) the frequency of compliance reporting;
  - (2) the approach and timing of compliance assessments;
  - (3) the retention of compliance assessments;
  - (4) the method of reporting of potential non-compliances and corrective actions taken;
  - (5) the table of contents of Compliance Assessment Reports; and
  - (6) public availability of Compliance Assessment Reports.
- 3-3 After receiving notice in writing from the CEO that the Compliance Assessment Plan satisfies the requirements of condition 3-2 the proponent shall assess compliance with conditions in accordance with the Compliance Assessment Plan required by condition 3-1.
- 3-4 The proponent shall retain reports of all compliance assessments described in the Compliance Assessment Plan required by condition 3-1 and shall make those reports available when requested by the CEO.

- 3-5 The proponent shall advise the CEO of any potential non-compliance within seven (7) days of that non-compliance being known.
- 3-6 The proponent shall submit to the CEO Compliance Assessment Reports addressing compliance in the previous calendar year. Compliance Assessment Reports shall be submitted by the submission date defined in the Compliance Assessment Plan required by condition 3-2, or as otherwise agreed in writing by the CEO.

The Compliance Assessment Report shall:

- (1) be endorsed by the proponent's CEO or a person delegated to sign on the CEO's behalf;
- (2) include a statement as to whether the proponent has complied with the conditions;
- (3) identify all potential non-compliances and describe corrective and preventative actions taken;
- (4) be made publicly available in accordance with the approved Compliance Assessment Plan; and
- (5) indicate any proposed changes to the Compliance Assessment Plan required by condition 3-1.

#### **4 Public Availability of Plans and Reports**

4-1 Subject to condition 4-2, within a reasonable time period approved by the CEO of the issue of this Statement and for the remainder of the life of the proposal the proponent shall make publicly available, in a manner approved in writing by the CEO, all environmental plans and reports required under this Statement.

4-2 If any parts of the plans and reports referred to in condition 4-1 contains particulars of:

- (1) a secret formula or process; or
- (2) confidential commercially sensitive information;

the proponent may submit a request for approval from the CEO to not make those parts of the plans and reports publicly available. In making such a request the proponent shall provide the CEO with an explanation and reasons why the data should not be made publicly available.

## **5 Baseline surveys - Groundwater and surface water dependent vegetation and permanent pools**

- 5-1 Within six months of the issue of this Statement, or as otherwise agreed in writing by the CEO, the proponent shall prepare and submit a Baseline Survey Plan to the satisfaction of the CEO.
- 5-2 The Baseline Survey Plan shall:
- (1) identify areas where further surveys are required to meet the requirements of conditions 10-1, noting that information collected during pre-mining surveys should be identified and used in wherever available;
  - (2) detail the proposed methodology for further baseline surveys and monitoring;
  - (3) detail the proposed criteria for identification of analogue sites to inform monitoring and management of groundwater levels in permanent pools, with particular regard to Weelumurra Creek pools; and
  - (4) detail the proposed frequency and timing of the proposed surveys and monitoring.
- 5-3 After receiving notice in writing from the CEO that the Baseline Survey Plan satisfies the requirements of condition 10-1, the proponent shall undertake additional baseline surveys and confirm the suitability of proposed analogue sites in accordance with the baseline survey review and plan.
- 5-4 On completion of the baseline surveys and monitoring the proponent shall report to the CEO on the following:
- (1) completion of the baseline surveys and monitoring in accordance with the plan;
  - (2) the results of the baseline surveys and monitoring;
  - (3) the location of suitable analogue sites for monitoring and management of groundwater levels in permanent pools; and
  - (4) a consolidated document detailing the pre-mining baseline condition of groundwater levels and vegetation health, and analogue sites suitable to inform monitoring required to demonstrate that conditions 10-1 will be met.

## **6 Inland waters environmental quality – lignite studies**

- 6-1 Within 12 months of the issue of this Statement, or as otherwise agreed in writing by the CEO, the proponent shall prepare and submit a Lignite Study Plan and a Hydraulic Barrier Study Plan to the CEO to demonstrate that condition 11-1 can be met.
- 6-2 The Lignite Study Plan shall:
- (1) provide a clear description of the extent and nature of the lignite body identified in the Western end of the Queens area;
  - (2) describe the methodology and timing of proposed investigations designed to select and justify appropriate vertical and horizontal buffer distances between the lignite body and the mining surface;
  - (3) describe the methodology and timing of proposed investigations to identify and quantify contaminants that will be generated should the lignite oxidise in the Queens area. Investigations should define the chemical and physical processes relevant to the transport and interaction of identified contaminants within the subsurface and surface-water environments; and
  - (4) describe the methodology and timing of proposed investigations to determine the net acid producing potential of lignite in the Queens area.
- 6-3 The Hydraulic Barrier Study Plan shall:
- (1) identify the process for selection of the proposed material to be used in construction of the hydraulic barrier including testing to confirm that no reaction to lignitic material would occur;
  - (2) describe the methodology and timing of investigations to determine the likely performance of the hydraulic barrier in the event of lignite oxidation, and consequent contaminant production (acid, sulphate metals and metalloids), including contaminant migration pathways and travel times; and
  - (3) describe the methodology and timing of investigations to confirm that the proposed construction method for the hydraulic barrier would not result in oxidisation of lignitic material intersected by the barrier.
- 6-4 After receiving notice that the Lignite Study Plan and the Hydraulic Barrier Study Plan satisfy the requirements of conditions 6-2 and 6-3, the proponent shall undertake the studies in accordance with the plan.

6-5 Within three months of completion of the background studies described conditions 6-2 and 6-3, the proponent shall report to the CEO on the results of the background studies.

## **7 Management-based Condition Environmental Management Plans**

7-1 The proponent shall prepare and submit Condition Environmental Management Plans:

- (1) within 12 months of issue of this Statement or as otherwise agreed in writing by the CEO, to demonstrate that the environmental objectives in conditions 8-1, 9-1, 12-1 and 14-1 will be met; and
- (2) within 24 months of the issue of this Statement or as otherwise agreed in writing by the CEO, to demonstrate that the environmental objectives in conditions 10-1, 11-1, 17-1 and 18-1 will be met.

7-2 The Condition Environmental Management Plans shall:

- (1) specify the environmental objectives to be achieved, as specified in conditions 8-1, 9-1, 10-1, 11-1, 12-1, 14-1, 17-1 and 18-1;
- (2) specify risk-based management actions that will be implemented to demonstrate compliance with the environmental objectives specified in conditions 8-1, 9-1, 10-1, 11-1, 12-1, 14-1, 17-1 and 18-1. Failure to implement one or more of the management actions represents non-compliance with these conditions;
- (3) specify measurable management target(s) to determine the effectiveness of the risk-based management actions;
- (4) specify monitoring and analysis to measure the effectiveness of management actions against management targets, including but not limited to, parameters to be measured, baseline data, monitoring locations, and frequency and timing of monitoring;
- (5) specify a process for revision of management actions and changes to proposed activities that could be undertaken, in the event that the management targets are not achieved;
- (6) provide the format and timing to demonstrate that conditions 8-1, 9-1, 10-1, 11-1, 12-1, 14-1, 17-1 and 18-1 have been met for the reporting period in the Compliance Assessment Report required by condition 3-1 including, but not limited to:
  - (a) verification of the implementation of management actions; and

- (b) reporting on the effectiveness of management actions against management target(s).

7-3 After receiving notice in writing from the CEO that the Condition Environmental Management Plan(s) satisfies the requirements of condition 7-2 for conditions 8-1, 9-1, 10-1, 11-1 12-1, 14-1, 17-1 and 18-1, the proponent shall:

- (1) implement the provisions of the Condition Environmental Management Plan(s); and
- (2) continue to implement the Condition Environmental Management Plan(s) until the CEO has confirmed by notice in writing that the proponent has demonstrated the objectives specified in conditions 8-1, 9-1, 10-1, 11-1, 12-1, 14-1, 17-1 and 18-1 have been met.

7-4 In the event that monitoring, tests, surveys or investigations indicate exceedance of management target(s) specified in the Condition Environmental Management Plan(s), the proponent shall:

- (1) report the exceedance in writing to the CEO within 21 days of the exceedance being identified;
- (2) investigate to determine the cause of the management targets being exceeded;
- (3) provide a report to the CEO within 90 days of the exceedance being reported as required by condition 7-4(1). The report shall include:
  - (a) cause of management targets being exceeded;
  - (b) the findings of the investigation required by conditions 7-4(2);
  - (c) details of revised and/or additional management actions to be implemented to prevent exceedance of the management target(s);
  - (d) relevant changes to proposal activities.

7-5 In the event that one or more of the management actions specified in the Condition Environmental Management Plan have not been implemented, the proponent shall:

- (1) report the failure to implement management action/s in writing to the CEO within 7 days of identification;
- (2) investigate to determine the cause of the management action(s) not being implemented;

- (3) investigate to provide information for the CEO to determine potential environmental harm or alteration of the environment that occurred due to the failure to implement management actions;
- (4) provide a report to the CEO within 21 days of the reporting required by condition 7-5(1). The report shall include:
  - (a) cause for failure to implement management actions;
  - (b) the findings of the investigation required by conditions 7-5(2) and 7-5(3);
  - (c) relevant changes to proposal activities; and
  - (d) measures to prevent, control or abate the environmental harm which may have occurred.

7-6 The proponent:

- (1) may review and revise the Condition Environmental Management Plan(s); or
- (2) shall review and revise the Condition Environmental Management Plan(s) as and when directed by the CEO.

7-7 The proponent shall implement the latest revision of the Condition Environmental Management Plan(s), which the CEO has confirmed by notice in writing, satisfies the requirements of condition 7-2.

## **Mine and Borefield**

### **8 Flora and Vegetation – conservation significant flora species and vegetation**

8-1 The proponent shall manage the implementation of the proposal to meet the following environmental objectives:

- (1) maintain the health of populations of *Gompholobium karijini* within the Mine Development Envelope, and the Lower Fortescue Borefield development envelope that are not authorised to be cleared;
- (2) minimise impacts to regionally and locally significant flora species and ecological communities within the Mine Development Envelope and the Lower Fortescue Borefield development envelope not authorised to be cleared under Schedule 1, including but not limited to the Brockman Iron Cracking Clay (PEC);
- (3) minimise the impacts to *Triodia basitricha* to maintain the species conservation status; and

- (4) maintain the health of the Threatened Ecological Community (TEC) Themeda Grassland within the Mine Development Envelope;
- 8-2 The proponent shall consult with the Department of Biodiversity, Conservation and Attractions in the preparation of the plan/s required by condition 7-1 that satisfies the objectives required by condition 8-1.
- 8-3 The plan/s required by condition 7-1 shall include provisions required by condition 7-2 to address impacts to conservation significant flora and vegetation health including but not limited to: changes to groundwater levels and groundwater quality; changes to surface flows; dust and weeds.

## **9 Flora and Vegetation – weeds**

- 9-1 The proponent shall manage the implementation of the proposal to meet the following environmental objective:
  - (1) prevent any increase in the diversity of weed species or the abundance of weeds attributable to the proposal.
- 9-2 The proponent shall prepare a plan required by condition 7-1 that satisfies the requirements of condition 7-2, to meet the outcome required by condition 9-1.
- 9-3 The proponent shall continue to implement the version most recently approved by the CEO of the *Weed Management Plan 45-PL-EN-0013* until the CEO has confirmed by notice in writing that the plan required by condition 7-1 satisfies the requirements of condition 7-2 to meet the objective required by condition 9-1.

## **10 Flora and vegetation – Groundwater and surface water dependent vegetation and water levels**

- 10-1 The proponent shall manage the proposal to meet the following environmental objectives:
  - (1) maintain the health of Groundwater Dependent Ecosystems, Potentially Groundwater Dependent Ecosystems, and other riparian vegetation associated with Weelumurra Creek, as shown in Figure 3 of Schedule 1 and defined by the geographical coordinates in Schedule 2, consistent with baseline surveys conducted in accordance with condition 5-3: and
  - (2) maintain the health of vegetation described as ‘potentially groundwater dependent’ within the drawdown cone of the Lower Fortescue Borefield as shown in Figure 4 of Schedule 1 and defined by the geographical coordinates in Schedule 2, consistent with baseline surveys conducted in accordance with condition 5-3;

- (3) maintain water levels in permanent pools in Kangeenarina Creek, which are not authorised to be removed by Schedule 1, consistent with pre-mining surveys;
  - (4) maintain the health of riparian vegetation associated with permanent pools and semi-permanent pools in Kangeenarina Creek that are not authorised to be removed by Schedule 1 consistent with pre-mining surveys;
  - (5) maintain water levels in permanent and semi-permanent pools associated with Weelumurra Creek at a level that approximates natural seasonal variability as determined using baseline data and analogue sites selected and described in accordance with condition 5-3; and
  - (6) minimise impacts to the health of vegetation associated with Zalamea Creek south of the existing rail line, which is not authorised to be cleared by Schedule 1, consistent with baseline surveys undertaken in accordance with condition 5-3 to maintain habitat values of the vegetation.
- 10-2 The plan required by condition 7-1 shall include provisions required by condition 7-2 which are informed by baseline data collected prior to mining or in accordance with condition 5-3, and which address changes to groundwater levels, changes to surface water flows, and vegetation health for the areas of vegetation defined in condition 10-1.
- 10-3 The proponent shall prepare a plan required by condition 7-1 that satisfies the requirements of condition 7-2 to meet the outcomes of condition 10-1.
- 10-4 The proponent shall continue to implement the *Kangeenarina Pools Supplementation Plan – Northern Pools Addendum 600SO-00018-RP-HY-0003* until notified by the CEO that the plan meets the requirements of conditions 10-1(3), and 10-1(4).

**11 Inland waters environmental quality – prevent impacts to groundwater from exposure or interaction with Lignite**

- 11-1 The proponent shall manage the implementation of the proposal to meet the following environmental objectives:
- (1) prevent contamination of groundwater as a result of oxidation of lignite or mobilisation of metals and metalloids from areas of lignite identified in the Queen's mine area as shown in Figure 5 of Schedule 1 and delineated in the coordinates in Schedule 2.
  - (2) prevent subsequent contamination of surface water as a result of groundwater discharge contaminated by the oxidation of lignite or

mobilisation of metals and metalloids from areas of lignite in the Queens mine area as shown in Figure 5 of Schedule 1 and delineated in the coordinates in Schedule 2.

- 11-2 The proponent shall prepare the plan/s required by condition 7-1 that satisfies the requirements of condition 7-2, to meet the outcomes required by condition 11-1.
- 11-3 The plan required by condition 7-1 shall:
- (1) be informed by the investigations required by condition 6-2;
  - (2) include details of management actions required to maintain an appropriate buffer distance from the lignite as determined in studies required by condition 6-2(2);
  - (3) provide details of how groundwater would be managed during operations and prior to any decommissioning or fracturing of the hydraulic barrier in the event that contamination of groundwater occurs.
- 11-4 The proponent shall ensure that the extent of dewatering in the Queens area does not approach within 10m horizontally or vertically of the lignite body shown in Figure 5 of Schedule 1 and described by the coordinates in Schedule 2 prior to approval in writing by the CEO of a management plan required by condition 7-1 that meets the outcomes required by condition 11-1.

## **12 Terrestrial Fauna – conservation significant fauna**

- 12-1 The proponent shall manage the implementation of the proposal to meet the following environmental objective:
- (1) minimise direct and indirect impacts on conservation significant fauna species and their habitat, including, but not limited to the Pilbara Olive Python, Northern Quoll, and Pilbara Leaf-nosed Bat.
- 12-2 The plans required by condition 7-1 shall include provisions required by condition 7-2 to manage impacts on conservation significant fauna including from, but not limited to, loss of habitat, changes to surface water flows, vehicle strike, noise and light.
- 12-3 The proponent shall continue to implement the version most recently approved by the CEO of the *Conservation Significant Fauna Management Plan 100-PL-EN-0022* until the CEO in consultation with the Department of Biodiversity, Conservation and Attractions has confirmed by notice in writing that the plan required by condition 7-1 satisfies the requirements of condition 7-2 to meet the objective required by condition 12-1.

### **13 Hydrological Processes – groundwater drawdown within Karijini National Park**

13-1 Within 12 months of issue of this Statement, the proponent shall prepare and submit a Condition Environmental Management Plan to meet the following outcome:

- (1) ensure that there is no drawdown of groundwater associated with the proposal at the boundary of, or within, Karijini National Park.

13-2 The Condition Environmental Management Plan shall:

- (1) specify trigger criteria that must provide an early warning that the threshold criteria identified in condition 13-2 may not be met;
- (2) specify threshold criteria to demonstrate compliance with the environmental outcomes specified in condition 13-1. Exceedance of the threshold criteria represents non-compliance with these conditions;
- (3) specify monitoring to determine if trigger criteria and threshold criteria are exceeded;
- (4) specify trigger level actions to be implemented in the event that trigger criteria have been exceeded;
- (5) specify threshold contingency actions to be implemented in the event that threshold criteria are exceeded; and
- (6) provide the format and timing for the reporting of monitoring results against trigger criteria and threshold criteria to demonstrate that condition 13-1 has been met over the reporting period in the Compliance Assessment Report required by condition 3-1.

13-3 After receiving notice in writing from the CEO in consultation with the Department of Biodiversity, Conservation and Attractions that the Condition Environmental Management Plan satisfies the requirements of condition 13-2 the proponent shall:

- (1) implement the provisions of the Condition Environmental Management Plan; and
- (2) continue to implement the Condition Environmental Management Plan until the CEO has confirmed by notice in writing that the proponent has demonstrated the outcomes specified in conditions 13-1 have been met.

13-4 In the event that monitoring indicates exceedance of threshold criteria specified in the Condition Environmental Management Plans, the proponent shall:

- (1) report the exceedance in writing to the CEO within 7 days of the exceedance being identified;

- (2) implement the threshold contingency actions specified in the Condition Environmental Management Plans within 24 hours and continue implementation of those actions until the CEO has confirmed by notice in writing that it has been demonstrated that the threshold criteria are being met and the implementation of the threshold contingency actions is no longer required;
- (3) investigate to determine the cause of the threshold criteria being exceeded;
- (4) investigate to provide information for the CEO to determine potential environmental harm or alteration of the environment that occurred due to threshold criteria being exceeded; and
- (5) provide a report to the CEO within 21 days of the exceedance being reported as required by condition 13-4(1). The report shall include:
  - (a) details of threshold contingency actions implemented;
  - (b) the effectiveness of the threshold contingency actions implemented, against the threshold criteria;
  - (c) the findings of the investigations required by condition 13-4(3) and 13-4(4);
  - (d) measures to prevent the threshold criteria being exceeded in the future;
  - (e) measures to prevent, control or abate the environmental harm which may have occurred; and
  - (f) justification of the threshold remaining, or being adjusted based on better understanding, demonstrating that outcomes will continue to be met.

13-5 The proponent:

- (1) may review and revise the Condition Environmental Management Plans, or
- (2) shall review and revise the Condition Environmental Management Plans as and when directed by the CEO.

13-6 The proponent shall implement the latest revision of the Condition Environmental Management Plans, which the CEO has confirmed by notice in writing, satisfies the requirements of condition 13-2.

## **14 Subterranean Fauna**

14-1 The proponent shall manage the implementation of the proposal to meet the following environmental objectives:

- (1) maintain the biodiversity and ecological integrity of troglofauna which have been identified through baseline surveys to have potentially restricted distributions or potentially restricted habitat; and
  - (2) manage groundwater drawdown at the Southern Borefield and Lower Fortescue Borefield to minimise impacts to stygofauna species, including each of the thirteen stygofauna species which have been identified through baseline surveys to have potentially restricted distributions or potentially restricted habitat.
- 14-2 The proponent shall prepare a Subterranean Fauna Management Plan required by condition 7-1 that satisfies the requirements of condition 7-2, to meet the objectives required by condition 14-1.
- 14-3 The plan required by condition 7-1 shall include provisions required by condition 7-2 to address the following in relation to excavation and dewatering both within and outside the development envelopes for the proposal:
- (1) a detailed targeted sampling plan and habitat investigations to demonstrate that troglofauna species are not restricted to the mine development envelope;
  - (2) a detailed stygofauna sampling plan to validate predictions that stygofauna will persist in groundwater within areas of drawdown associated with the Southern Borefield and the Lower Fortescue Borefield; and
  - (3) details of management actions, including exclusions zones and changes to groundwater abstraction regimes, to be implemented in the event that targeted sampling and investigations indicate that the objectives required by condition 14-1 may not be met.
- 14-4 The proponent shall continue to implement the version of the plan most recently approved by the CEO until the CEO has confirmed by notice in writing that the plan required by condition 7-1 satisfies the requirements of condition 7-2 to meet the objectives required by condition 7-1.

## **15 Rehabilitation and Closure – Rehabilitation and decommissioning of the mine and borefield**

- 15-1 The proponent shall manage the implementation of the proposal to meet the following environmental objective:
- (1) ensure that the proposal is rehabilitated and decommissioned in an ecologically sustainable manner.
- 15-2 Within six months of the issue of this Statement, or as otherwise agreed in writing by the CEO, the proponent shall prepare and submit a Mine Closure

Plan addressing the cumulative revised proposal in accordance with the *Guidelines for Preparing Mine Closure Plans*, May 2015 (or any subsequent revisions of the guidelines), on advice of the Department of Mines, Industry Regulation and Safety; and the Department of Biodiversity, Conservation and Attractions.

- 15-3 The proponent shall continue to implement the version of the *Solomon Project Mine Closure Plan (SO-PL-EN-002)* most recently approved by the CEO in writing until the CEO has confirmed by notice in writing that that the Mine Closure Plan satisfies the requirements of condition 15-2 to meet the objective required by 15-1.
- 15-4 The plan shall include completion criterion for each domain of the mine to enable the proponent to demonstrate that closure objectives will be met, including, but not limited to, backfilling of pits to preclude the formation of mine pit lakes, prevention of impacts to groundwater quality adjacent to Weelumurra Creek, reinstatement of groundwater flows to Weelumurra Creek, reinstatement of groundwater flows to permanent pools in Kangeenarina Creek, and maintenance of vegetation in Zalamea Creek south of the existing rail line.
- 15-5 The plan shall include a schedule of progressive rehabilitation for all areas of clearing within the mine development envelope.
- 15-6 The plan shall include a monitoring framework for the monitoring of groundwater levels and groundwater quality to enable the proponent to demonstrate that groundwater associated with Weelumurra Creek and permanent pools in Kangeenarina Creek meets the following objectives:
- (1) groundwater flows have returned to a level which supports water levels in the permanent pools consistent with pre-mining conditions;
  - (2) groundwater flows are self-supporting; and
  - (3) groundwater quality is consistent with pre-mining groundwater quality as determined by baseline surveys conducted in accordance with condition 5-3.
- 15-7 The plan shall include a performance report for the period since the last revision of the plan, including, but not limited to:
- (1) a gap analysis and risk assessment to determine what further information is required in relation to rehabilitation and decommissioning of each domain or feature;
  - (2) progress towards meeting information gaps, including results of research activities and rehabilitation trials;

- (3) identification of actual progressive rehabilitation against the schedule of progressive rehabilitation required in condition 15-5; and
- (4) progress against completion criteria.

15-8 Three years prior to the closure of the Solomon Iron Ore Mine, the proponent shall prepare and submit a Final Mine Closure Plan addressing the cumulative revised proposal in accordance with the *Guidelines for Preparing Mine Closure Plans*, May 2015 (or any subsequent revisions of the guidelines), and addressing the requirements of conditions 15-1, 15-4, 15-6 and 15-7 to the satisfaction of the CEO on advice of the Department of Mines, Industry Regulation and Safety; and the Department of Biodiversity, Conservation and Attractions.

## **16 Offsets – Mine and Borefield**

16-1 In view of the significant residual impacts and risks as a result of implementation of the proposal, including the clearing of 'Good to Excellent' condition native vegetation, the Priority Ecological Community 'Brockman Iron cracking clay communities of the Hamersley Range', and riparian vegetation, the proponent shall contribute funds calculated pursuant to condition 16-2. This funding shall be provided to a government-established conservation offset fund or an alternative offset arrangement providing an equivalent outcome as determined by the Minister.

16-2 The proponent's contribution to the fund identified in condition 16-1 shall be paid biennially, the first payment due on 31 May in the second year following the issue of this Statement. The amount of funding will be made on the following basis and in accordance with the approved Impact Reconciliation Procedure required by condition 16-4:

- (1) \$750 AUD (excluding GST) per hectare of 'Good to Excellent' condition native vegetation cleared within the Mine Development Envelope or Lower Fortescue Borefield Development Envelope (Development envelopes are delineated in Figure 1 and defined by the geographic coordinates in Schedule 2) within the Hamersley IBRA subregion; or
- (2) \$1500 AUD (excluding GST) per hectare of 'Good to Excellent' condition native vegetation cleared within the Mine Development Envelope or Lower Fortescue Borefield Development Envelope (Development envelopes are delineated in Figure 1 and defined by the geographic coordinates in Schedule 2) within the Fortescue IBRA subregion; or

- (3) \$1500 AUD (excluding GST) per hectare of riparian vegetation (as defined in Table 3 of Schedule 1) or Priority Ecological Community “Brockman Iron Cracking clays’ cleared within the Mine Development Envelope or Lower Fortescue Borefield Development Envelope (Development envelopes are delineated in Figure 1 and defined by the geographic coordinates in Schedule 2) within the Hamersley IBRA subregion; or
  - (4) \$3000 AUD (excluding GST) per hectare of riparian vegetation or Priority Ecological Community “Brockman Iron Cracking clays’ cleared within the Mine Development Envelope or Lower Fortescue Borefield Development Envelope (Development envelopes are delineated in Figure 1 and defined by the geographic coordinates in Schedule 2) within the Fortescue IBRA subregion.
- 16-3 The 4416 ha of clearing in the mine development envelope approved under Ministerial Statement 862 is exempt from the requirement to offset under condition 16-2.
- 16-4 Within 12 months of the date of this Statement, the proponent shall prepare an Impact Reconciliation Procedure to the satisfaction of the CEO.
- 16-5 The Impact Reconciliation Procedure required pursuant to condition 16-4 shall:
  - (1) include a methodology to identify clearing of ‘Good to Excellent’ condition native vegetation in the Hamersley and Fortescue IBRA subregions; Priority Ecological Community “Brockman Iron Cracking clays’ and riparian vegetation;
  - (2) require the proponent to submit spatial data identifying areas of each environmental value that has been cleared;
  - (3) include a methodology for calculating the amount of clearing undertaken during each biennial time period; and
  - (4) state that the biennial time period commences on 1 March prior the date of this Statement, and that the due date for submitting the results of the Procedure for approval of the CEO is 31 March following the end of each biennial time period.
- 16-6 The real value of contributions described in condition 16-2 will be maintained through indexation to the Perth Consumer Price Index (CPI), with the first adjustment to be applied to the first contribution.
- 16-7 Should the proponent be required to provide an offset under a condition of approval of the Australian Government under the *Environment Protection and*

*Biodiversity Conservation Act 1999*, the proponent may write to the CEO seeking a reduction in the funding required under condition 16-2, provided that the total offset amount provided for any given hectare of clearing does not fall below that specified in condition 16-2.

## **Hamersley Rail Line**

### **17 Flora and vegetation and Hydrological Processes – Flora and vegetation including Mulga within and downstream of the Rail Development Envelope.**

17-1 The proponent shall manage the implementation of the proposal to meet the following environmental objectives;

- (1) maintain the health of populations of regionally and locally significant flora species and ecological communities not authorised to be cleared in Schedule 1; including but not limited to *Gompholobium karijini*, within the rail development envelope; and
- (2) Maintain the health of Mulga and other significant vegetation downstream of the rail line consistent with pre-development surveys.

17-2 The proponent shall prepare a plan required by condition 7-1 that satisfies the requirements of condition 7-2, to meet the objective required by condition 17-1.

17-3 The proponent shall continue to implement the version most recently approved by the CEO of the *Solomon Rail Project Mulga Management Plan (SO-PL-EN-0011)* until the CEO has confirmed by notice in writing that the plan/s required by condition 7-1 satisfies the requirements of condition 7-2 to meet the objective required by condition 17-1(2).

### **18 Rehabilitation and Decommissioning - Rail**

18-1 The proponent shall manage the implementation of the proposal to meet the following environmental objective:

- (1) ensure that the rail line within the rail development envelope is decommissioned and rehabilitated consistent with the requirements of the *Railway and Port (The Pilbara Infrastructure Pty Ltd) Agreement Act 2004*.

18-2 The proponent shall prepare a plan required by condition 7-1 that satisfies the requirements of condition 7-2, to meet the objective required by condition 18-1.

## **19 Offsets - Rail**

- 19-1 In view of the significant residual impacts and risks as a result of implementation of the proposal, including the clearing of 'Good to Excellent' condition native vegetation, the proponent shall contribute funds calculated pursuant to condition 16-2. This funding shall be provided to a government-established conservation offset fund or an alternative offset arrangement providing an equivalent outcome as determined by the Minister.
- 19-2 The proponent's contribution to the fund identified in condition 16-1 shall be paid biennially, the first payment due on 31 May in the second year following the issue of this Statement. The amount of funding will be made on the following basis and in accordance with the approved Impact Reconciliation Procedure required by condition 16-4:
- (1) \$750 AUD (excluding GST) per hectare of 'Good to Excellent' condition native vegetation cleared within the Rail Corridor Development Envelope (Development envelopes are delineated in Figure 1 and defined by the geographic coordinates in Schedule 2) within the Chichester or Hamersley IBRA subregions; or
  - (2) \$1500 AUD (excluding GST) per hectare of 'Good to Excellent' condition native vegetation cleared within the Rail Corridor Development Envelope (Development envelopes are delineated in Figure 1 and defined by the geographic coordinates in Schedule 2) within the Fortescue IBRA subregion.
- 19-3 The 1897 ha of clearing in the rail corridor envelope approved under Ministerial Statement 862 is exempt from the requirement to offset under condition 19-2.
- 19-4 Within 12 months of the date of this Statement, the proponent shall prepare an Impact Reconciliation Procedure to the satisfaction of the CEO.
- 19-5 The Impact Reconciliation Procedure required pursuant to condition 19-4 shall:
- (1) include a methodology to identify clearing of 'Good to Excellent' condition native vegetation in the Chichester, Hamersley and Fortescue IBRA subregions;
  - (2) require the proponent to submit spatial data identifying areas of 'Good to Excellent' native vegetation that has been cleared;
  - (3) include a methodology for calculating the amount of clearing undertaken during each biennial time period;

- (4) include a methodology for calculating the amount of temporary vegetation clearing for the railway line and related infrastructure that has commenced rehabilitation within twelve months of clearing;
  - (5) state that the biennial time period commences on 1 March prior the date of this Statement, and that the due date for submitting the results of the Procedure for approval of the CEO is 31 March following the end of each biennial time period.
  - (6) identify that any areas cleared within the Rail Development Envelope (Development envelopes are delineated in Figure 1 and defined by the geographic coordinates in Schedule 2) in the Pilbara bioregion that have not commenced rehabilitation within 12 months of clearing are to be considered part of the “railway line and related infrastructure” and must be included in the area subject to condition 19-2.
- 19-6 The real value of contributions described in condition 19-2 will be maintained through indexation to the Perth CPI, with the first adjustment to be applied to the first contribution.
- 19-7 Should the proponent be required to provide an offset under a condition of approval of the Australian Government under the *Environment Protection and Conservation Biodiversity Act 1999*, the proponent may write to the CEO seeking a reduction in the funding required under condition 19-2, provided that the total offset amount provided for any given hectare of clearing does not fall below that specified in condition 19-2.

[Signed on 2 October 2017]

Hon Stephen Dawson MLC  
**MINISTER FOR ENVIRONMENT**

**Table 1: Summary of the Proposal**

<b>Proposal Title</b>	Solomon Iron Ore Project
<b>Short Description</b>	Develop and operate the Solomon Iron Ore Mine, located approximately 60 kilometres north of Tom Price, including the Southern Borefield and Lower Fortescue Borefield, and operate the existing Hamersley Rail line.

**Table 2: Location and authorised extent of physical and operational elements**

<b>Column 1</b>	<b>Column 2</b>	<b>Column 3</b>
<b>Element</b>	<b>Location</b>	<b>Authorised Extent</b>
Mine and associated infrastructure, including the Southern Borefield	Figure 1 and Figure 2	Clearing of no more than 16,131 ha of native vegetation within the 36,602 ha mine development envelope, including no more than 11 ha of direct clearing within the Brockman Iron Cracking Clay PEC.
Hamersley Rail line and associated rail infrastructure, water infrastructure for Lower Fortescue Borefield	Figure 1	Clearing of no more than 2,174 ha of native vegetation within the 29,257 ha combined rail and rail spur corridor development envelopes.
Lower Borefield and Associated Infrastructure	Figure 1	Clearing of no more than 154 ha of native vegetation within the 25,092 ha Lower Borefield development envelope.
Water supply – Lower Fortescue Borefield	Figure 1	Up to 14 Gigalitres per annum (GL/a) from the Lower Fortescue Borefield within the Lower Fortescue Borefield development envelope
Water Supply – Southern Borefield	Figure 2	Up to 12 GL/a from the Southern Borefield within the mine development envelope.
Dewatering		Dewatering for mining to be confined within the Channel Iron Deposit and within the mine development envelope.
Dewater disposal		Processing and operational water supply requirements

Backfilling of mine pits		Pits to be backfilled to an extent that prevents the formation of pit lakes
--------------------------	--	-----------------------------------------------------------------------------

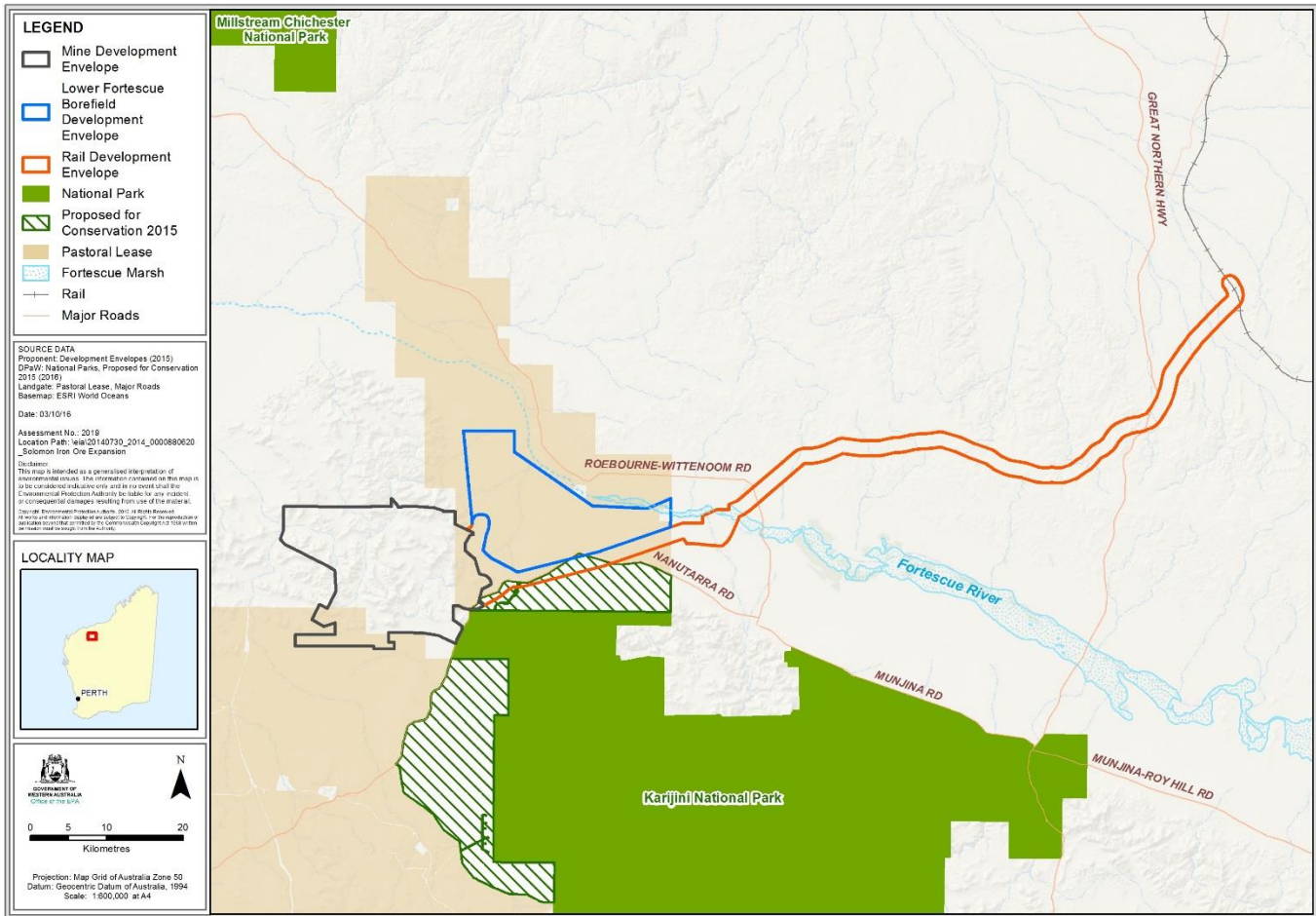
**Table 3: Abbreviations and Definitions**

Acronym or Abbreviation	Definition or Term
CEO	The Chief Executive Officer of the Department of the Public Service of the State responsible for the administration of section 48 of the <i>Environmental Protection Act 1986</i> , or his delegate.
EPA	Environmental Protection Authority
EP Act	<i>Environmental Protection Act 1986</i>
ha	Hectare
Conservation Significant	Species that are listed under the <i>Environment Protection and Biodiversity Conservation Act 1999</i> and <i>Wildlife Conservation Act 1950</i> , and the Department of Biodiversity, Conservation and Attractions Priority Species that are likely to have their conservation status changed by the proposal.
'Good to Excellent' condition native vegetation	As defined in Technical Guide – Flora and Vegetation Surveys for Environmental Impact Assessment (EPA, 2015) or any subsequent revisions of this guide.
Riparian Vegetation	The distinctive vegetation associated with a wetland or watercourse. [Department of Environment and Conservation – <i>Native vegetation clearing legislation in Western Australia</i> (Version 2 April 2010)].  For the purpose of the offset calculation, riparian vegetation is classified as vegetation units within the riparian zone, comprising the eleven vegetation mapping units described in Figure 8 of the Response to Submissions document (FMG, 2016)
Semi-permanent pools	A pool that is present in most years but will dry out during periods of drought when groundwater levels fall below the level of the pool.

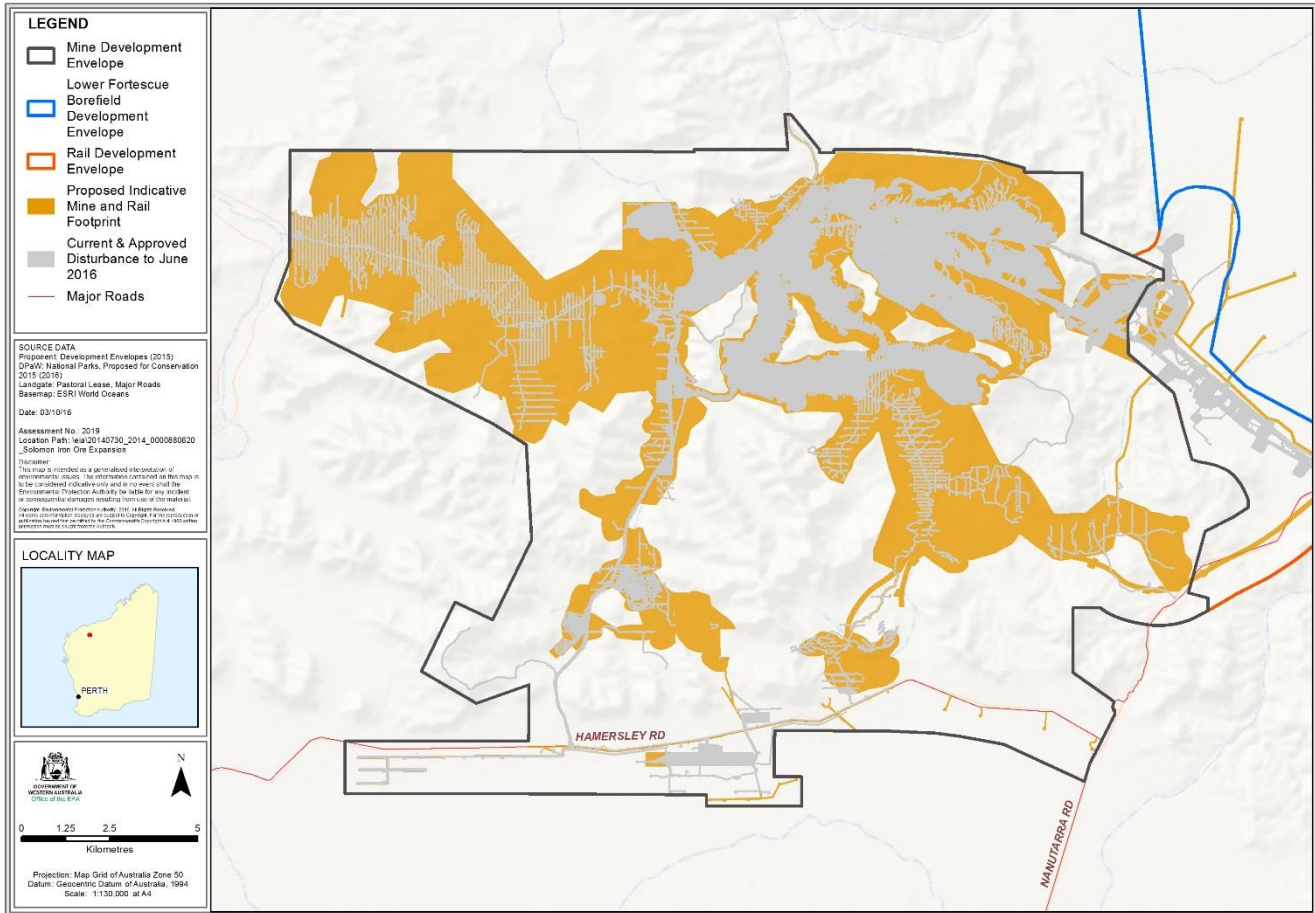
## Figures

Figure 1 Regional Location and Development Envelopes

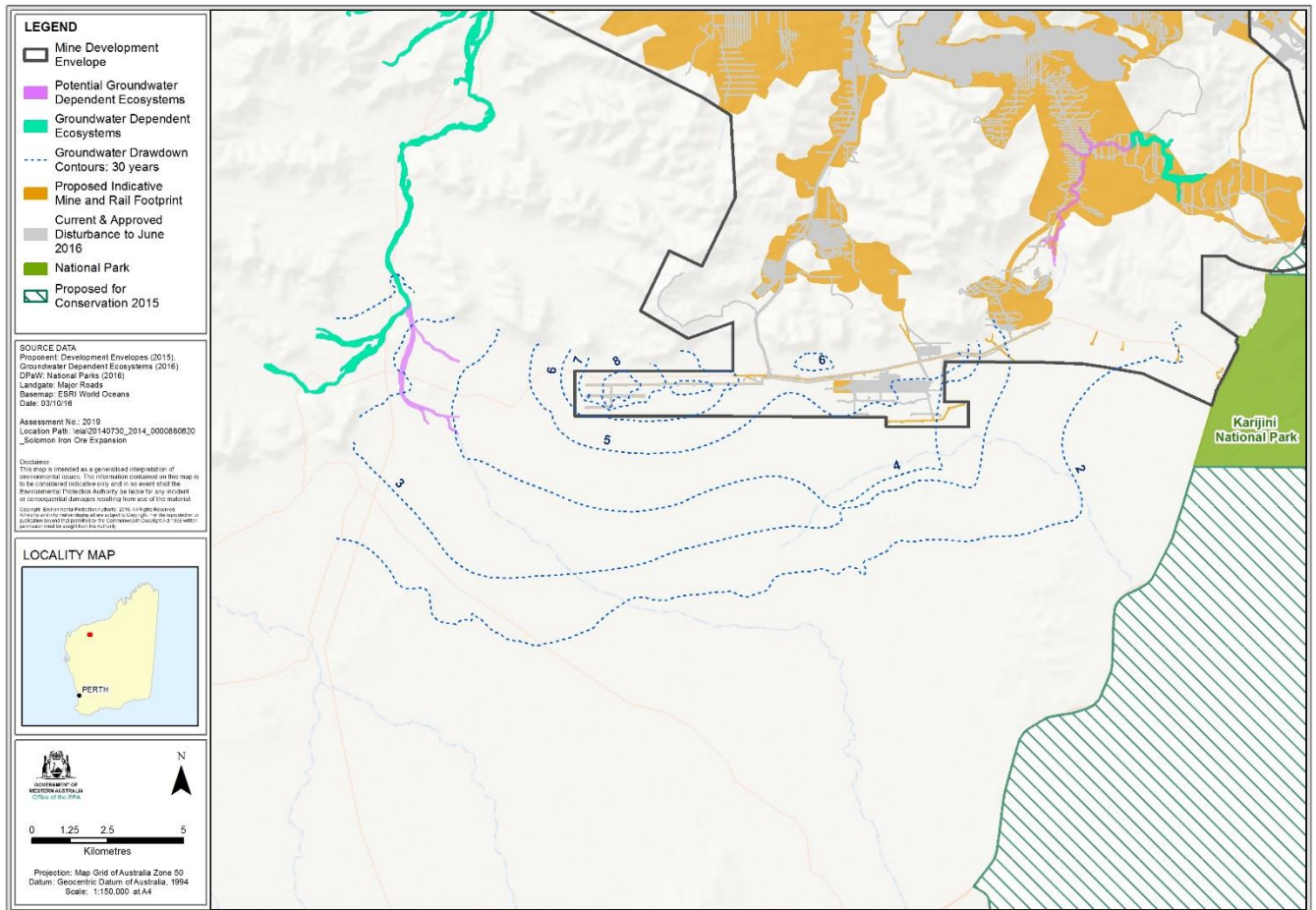
- Figure 2 Mine Development Envelope including location of Southern Borefield
- Figure 3 Groundwater Dependent Vegetation and Potentially groundwater dependent vegetation associated with Weelumurra Creek
- Figure 4 Potentially groundwater dependent vegetation associated with the Lower Fortescue Borefield
- Figure 5 Extent of Lignite in the Queens area



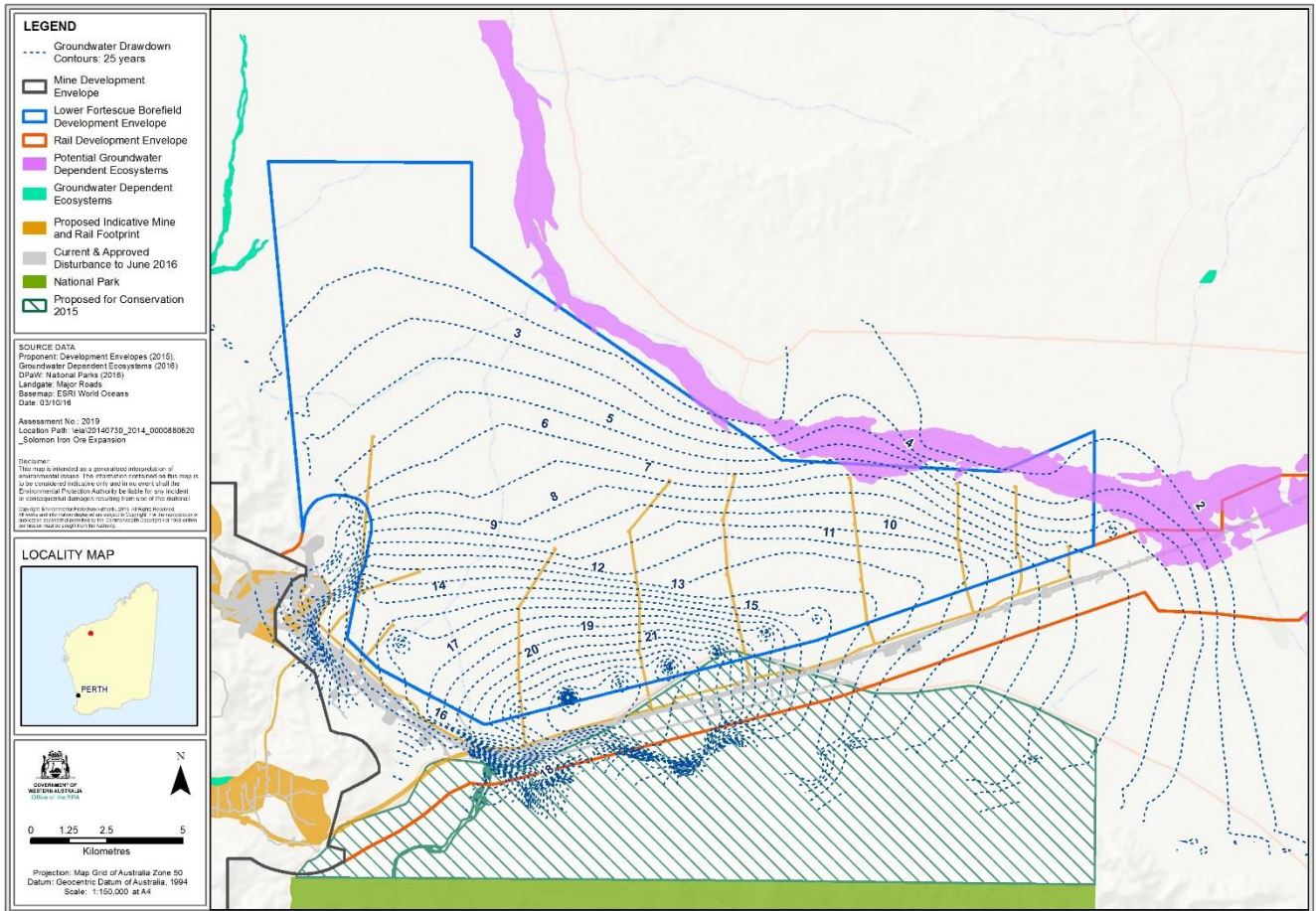
**Figure 1 Regional Location and Development Envelopes**



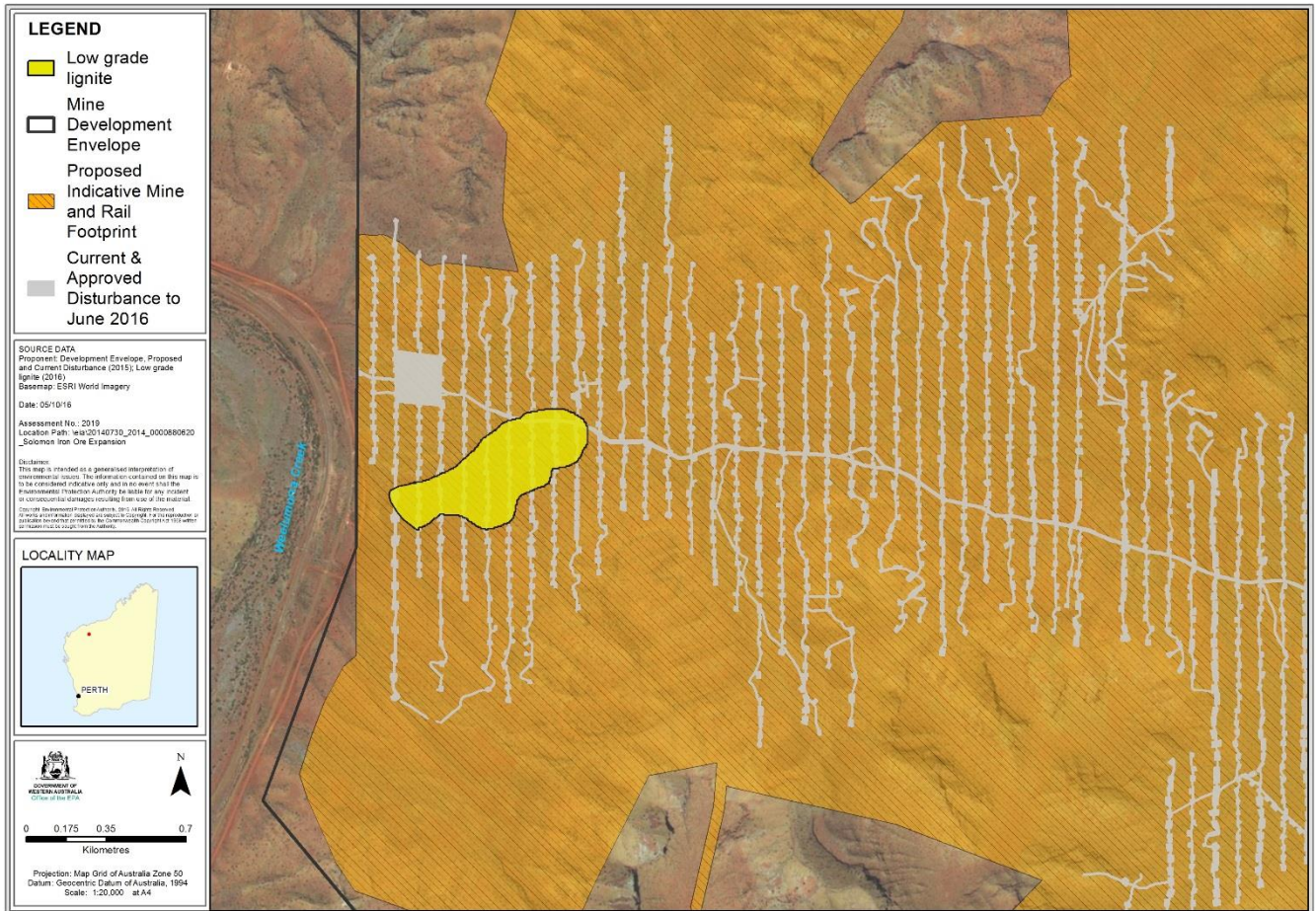
**Figure 2 Mine Development Envelope including location of Southern Borefield**



**Figure 3 Groundwater Dependent Vegetation and Potentially groundwater dependent vegetation associated with Weelumurra Creek**



**Figure 4 Potentially groundwater dependent vegetation associated with the Lower Fortescue Borefield**



**Figure 5** Extent of Lignite identified in the Queens area.

**Geographic Coordinates**

Coordinates defining the Solomon Mine Development Envelope are held by the Department of Water and Environmental Regulation, Document Reference Number (2016-1478676856293).

Coordinates defining the Solomon Lower Borefield Development Envelope are held by the Department of Water and Environmental Regulation, Document Reference Number (2016-1478676855627).

Coordinates defining the Solomon Rail Development Envelope are held by the Department of Water and Environmental Regulation, Document Reference Number (2016-1478676857524).

Coordinates defining the extent of Groundwater Dependent Ecosystems and Potential Groundwater Dependent Ecosystems associated with Weelumurra Creek are held by the Department of Water and Environmental Regulation Document Reference Number (2016-1478676854331).

Coordinates defining the extent of Potential Groundwater Dependent Ecosystems associated with the Lower Fortescue Borefield are held by the Department of Water and Environmental Regulation, Document Reference Number (2016-1478676856931).

Coordinates defining the extent of the Lignitic layer in the Queens mine area are held by the Department of Water and Environmental Regulation, Document Reference Number (2016-1478676855160).

## Attachment 1 to Ministerial Statement 1062

### Change to proposal approved under section 45C of the *Environmental Protection Act 1986*

This Attachment replaces Schedule 1 and Schedule 2 of Ministerial Statement 1062

**Proposal: Solomon Iron Ore Project – Sustaining Production**

**Proponent: Fortescue Metals Group Limited**

#### Changes:

- Expand the Mine Development Envelopment (MDE) from 36,602 ha to 37,061 ha (an increase of 459 ha) to cater for the creation of three separate groundwater supplementation areas (Collectively referred to as the Groundwater Supplementation Area (GSA)).
- Increase the authorised extent of clearing within the Railway Development Envelope (RDE) from 2,174 ha to a revised total of 2,324 ha (an increase of 150 ha).
- Allow water supply for the Lower Fortescue Borefield to be abstracted from within the RDE.

**Table 1: Summary of the Proposal**

Proposal Title	Solomon Iron Ore Project
Short Description	Develop and operate the Solomon Iron Ore Mine, located approximately 60 kilometres north of Tom Price, including the Southern Borefield and Lower Fortescue Borefield, and operate the existing Hamersley Rail line.

**Table 2: Location and authorised extent of physical and operational elements**

Element	Location	Previously Authorised Extent	Authorised Extent
Mine and associated infrastructure, including the Southern Borefield <b>and Groundwater Supplementation Area.</b>	Figure 1 and Figure 2	Clearing of no more than 16,131 ha of native vegetation within the 36,602 ha mine development envelope, including no more than 11 ha of direct clearing within the Brockman Iron Cracking Clay PEC.	Clearing of no more than 16,131 ha of native vegetation within the <b>37,061</b> ha mine development envelope, including: <ul style="list-style-type: none"> <li>• no more than 11 ha of direct clearing within the Brockman Iron Cracking Clay PEC; <b>and</b></li> <li>• <b>no more than 68 ha of clearing within the Groundwater</b></li> </ul>

Element	Location	Previously Authorised Extent	Authorised Extent
			<b>Supplementation Area.</b>
Hamersley Rail line and associated rail infrastructure, water infrastructure for Lower Fortescue Borefield.	Figure 1	Clearing of no more than 2,174 ha of native vegetation within the 29,257 ha combined rail and rail spur corridor development envelopes.	Clearing of no more than <b>2,324</b> ha of native vegetation within the 29,257 ha combined rail and rail spur corridor development envelopes.
Lower Borefield and Associated Infrastructure.	Figure 1	Clearing of no more than 154 ha of native vegetation within the 25,092 ha Lower Borefield development envelope.	No change.
Water supply – Lower Fortescue Borefield	Figure 1	Up to 14 Gigalitres per annum (GL/a) from the Lower Fortescue Borefield within the Lower Fortescue Borefield development envelope.	Up to 14 Gigalitres per annum (GL/a) from the Lower Fortescue Borefield within the Lower Fortescue Borefield Development Envelope <b>and the Railway Development Envelope.</b>
Water Supply – Southern Borefield	Figure 2	Up to 12 GL/a from the Southern Borefield within the mine development envelope.	No change.
Dewatering		Dewatering for mining to be confined within the Channel Iron Deposit and within the mine development envelope.	No change.
Dewater disposal		Processing and operational water supply requirements.	No change.
Backfilling of mine pits		Pits to be backfilled to an extent that prevents the formation of pit lakes.	No change.

Note: Text in **bold** in Table 2 indicates a change to the proposal.

**Table 3: Abbreviations**

Abbreviation	Term
CEO	The Chief Executive Officer of the Department of the Public Service of the State responsible for the administration of section 48 of the <i>Environmental Protection Act 1986</i> , or his delegate.
EPA	Environmental Protection Authority
EP Act	<i>Environmental Protection Act 1986</i>
<b>GL</b>	<b>gigalitre</b>
ha	Hectare
Conservation Significant	Species that are listed under the <i>Environment Protection and Biodiversity Conservation Act 1999</i> and <i>Wildlife Conservation Act 1950</i> , and the Department of Biodiversity, Conservation and Attractions Priority Species that are likely to have their conservation status changed by the proposal.
'Good to Excellent' condition native vegetation	As defined in Technical Guide – Flora and Vegetation Surveys for Environmental Impact Assessment (EPA, <b>2016</b> ) or any subsequent revisions of this guide.
Riparian Vegetation	<p>The distinctive vegetation associated with a wetland or watercourse. [Department of Environment and Conservation – <i>Native vegetation clearing legislation in Western Australia</i> (Version 2 April 2010)].</p> <p>For the purpose of the offset calculation, riparian vegetation is classified as vegetation units within the riparian zone, comprising the eleven vegetation mapping units described in Figure 8 of the Response to Submissions document (FMG, 2016)</p>
Semi-permanent pools	A pool that is present in most years but will dry out during periods of drought when groundwater levels fall below the level of the pool.

**Figures (attached)**

Figure 1 Regional Location and revised Development Envelopes

Figure 2 Revised Mine Development Envelope including location of Southern Borefield

Figure 3 Groundwater Dependent Vegetation and Potentially groundwater dependent vegetation associated with Weelumurra Creek

Figure 4 Potentially groundwater dependent vegetation associated with the Lower Fortescue Borefield

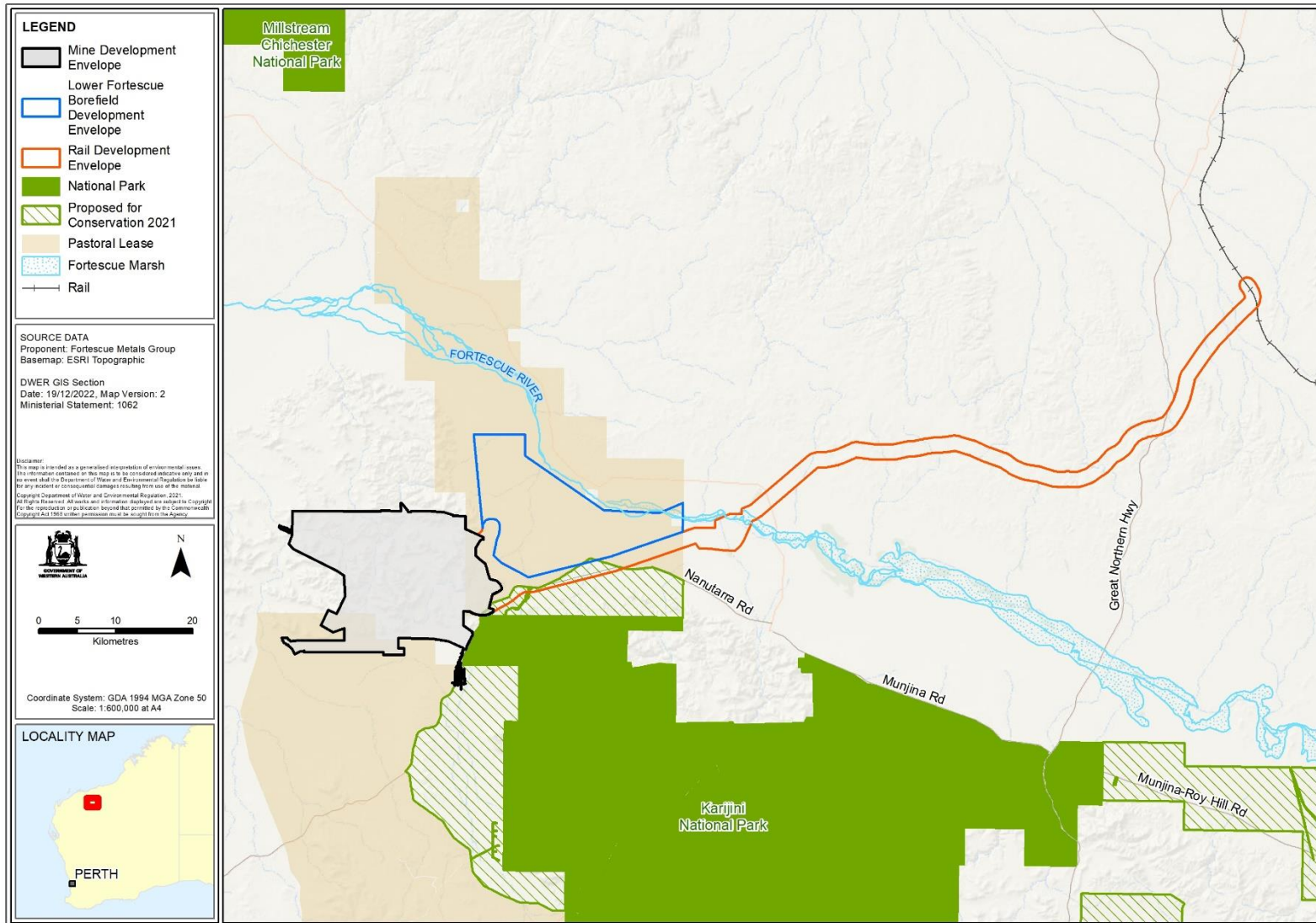
Figure 5 Extent of Lignite in the Queens area

Co-ordinates defining the mine development envelope, indicative disturbance for the Groundwater Supplementation area and indicative disturbance footprint for the Railway Development Envelope are held by the Department of Water and Environmental Regulation, Document Reference Number DWERDT701984.

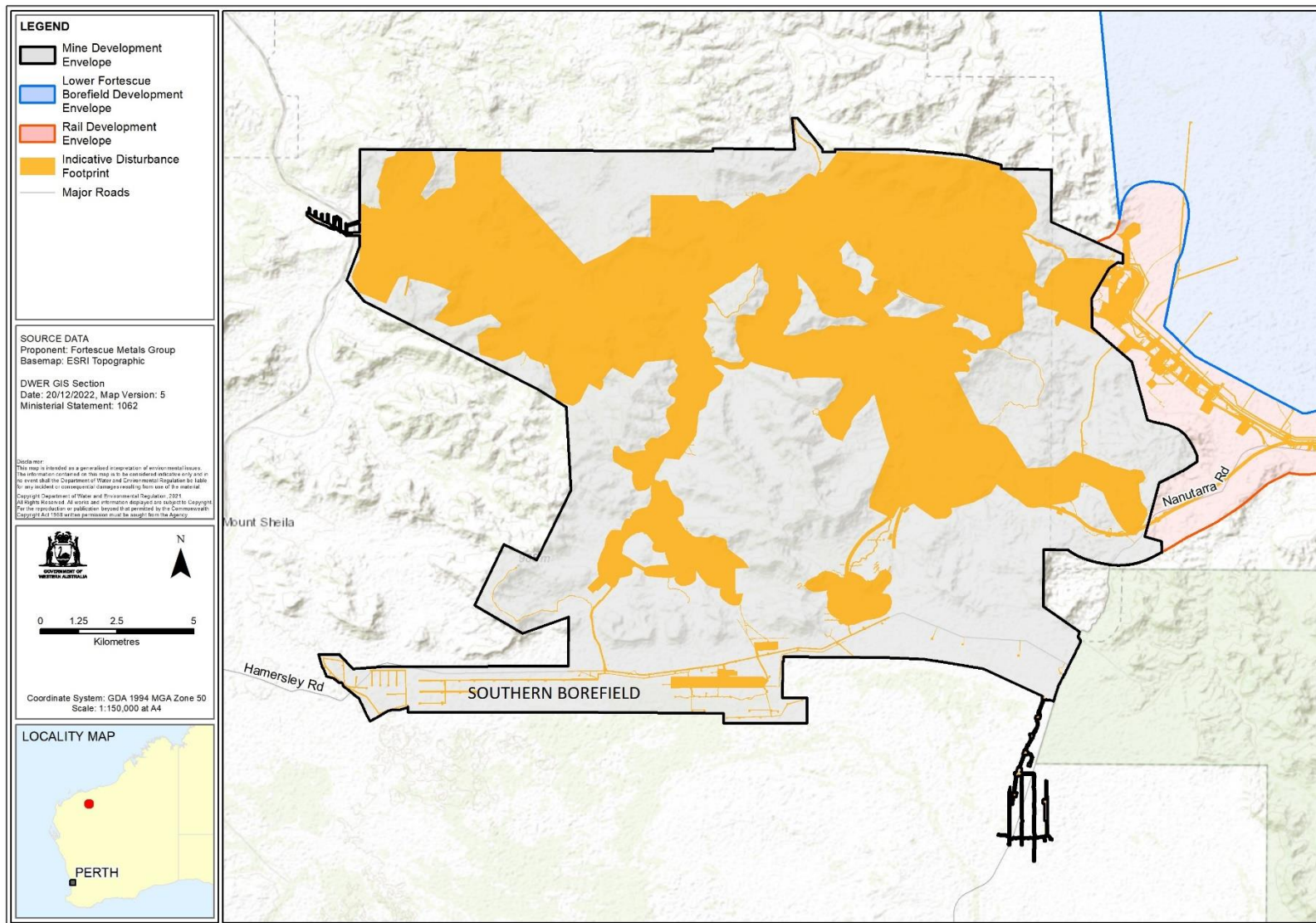
[Signed 7 June 2023]

**Hon Reece Whitby MLA**

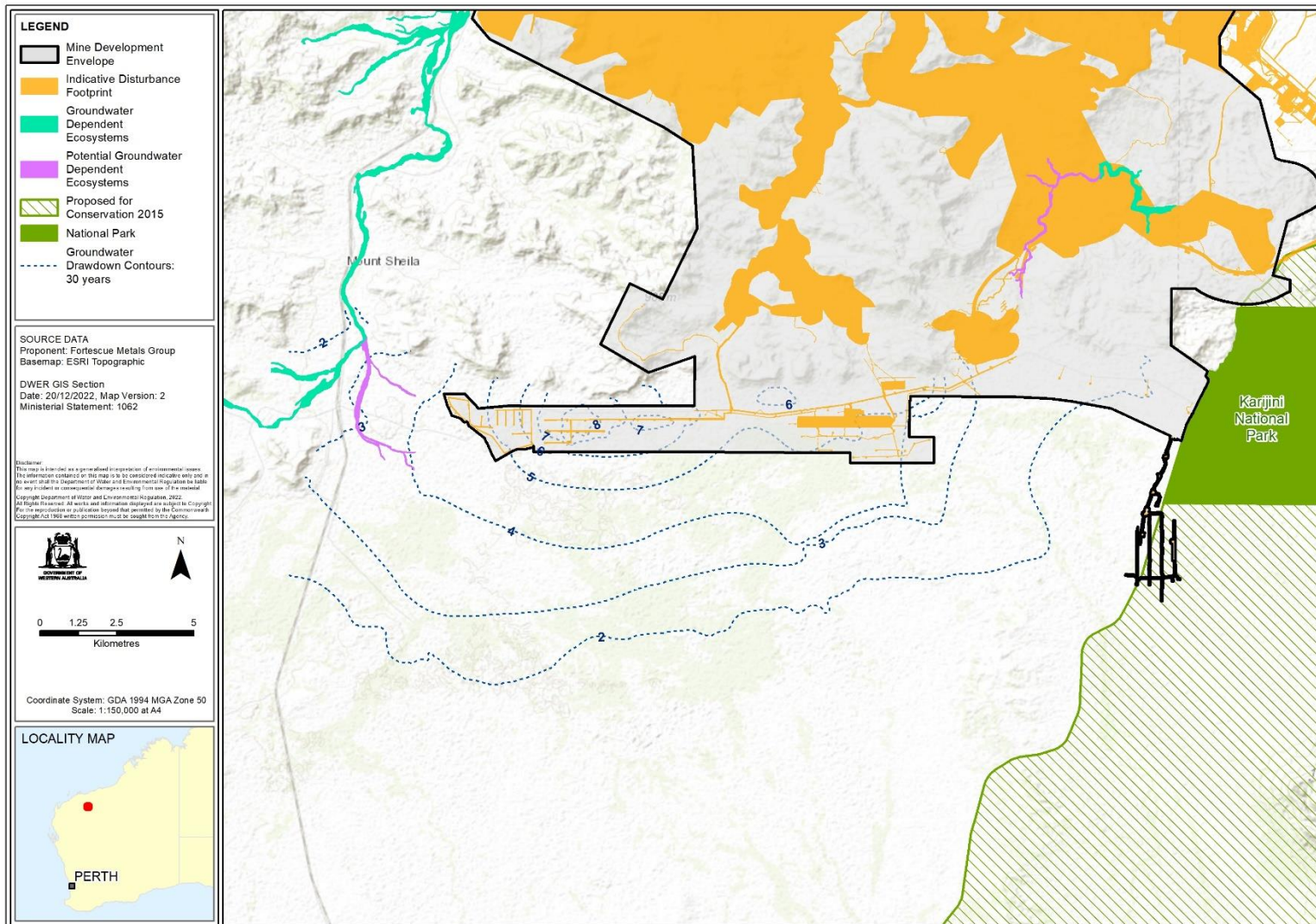
MINISTER FOR ENVIRONMENT; CLIMATE ACTION



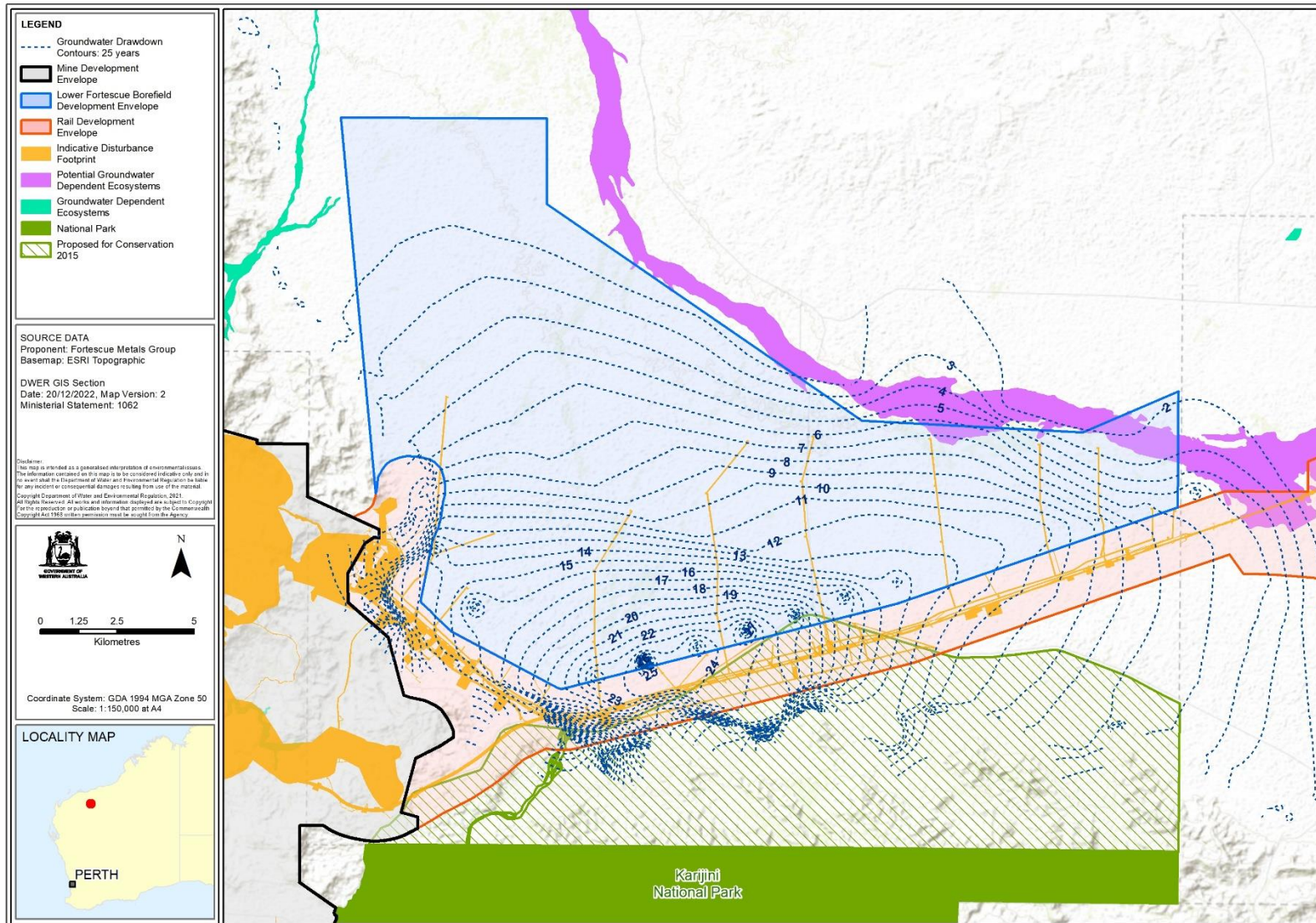
**Figure 1 Regional Location and Revised Development Envelopes**



**Figure 2 Revised Mine Development Envelope including location of Southern Borefield**



**Figure 3 Groundwater Dependent Vegetation and Potentially groundwater dependent vegetation associated with Weelumurra Creek**



**Figure 4 Potentially groundwater dependent vegetation associated with the Lower Fortescue Borefield**



Figure 5 Extent of Lignite in the Queens area

## Attachment 2 to Ministerial Statement 1062

Amendment to proposal approved under section 45C of the  
*Environmental Protection Act 1986*


---

This Attachment replaces the Attachment 1 of Ministerial Statement 1062.

---

**Proposal: Solomon Iron Ore Project – Sustaining Production****Proponent: Fortescue Ltd****Changes:**

- Change to the existing proposal description to account for the construction and operation of power generation facilities including a solar photovoltaic (PV) farm.
- Change in the indicative disturbance footprint within the authorised Development Envelope.

**Table 1: Summary of the proposal**

Proposal title	Solomon Iron Ore Project – Sustaining Production
Short description	Proposal to develop and operate the Solomon Iron Ore Mine, located approximately 60 kilometres north of Tom Price, including the Southern Borefield and Lower Fortescue Borefield, and operate the existing Hamersley Rail line <b>and construction and operation of power generation facilities including a solar PV farm.</b>

**Table 2: Location and authorised extent of physical and operational elements**

Element	Location	Previously Authorised Extent	Authorised Extent
Mine and associated infrastructure, including the Southern Borefield and Groundwater Supplementation Area.	Figure 1 and Figure 2	Clearing of no more than 16,131 ha of native vegetation within the 37,061 ha mine development envelope, including: <ul style="list-style-type: none"> <li>• no more than 11 ha of direct clearing within the Brockman Iron Cracking Clay PEC; and</li> <li>• no more than 68 ha of clearing within the</li> </ul>	Clearing of no more than 16,131 ha of native vegetation within the 37,061 ha mine development envelope, including: <ul style="list-style-type: none"> <li>• no more than 11 ha of direct clearing within the Brockman Iron Cracking Clay PEC; and</li> <li>• no more than 68 ha of clearing within the Groundwater</li> </ul>

Element	Location	Previously Authorised Extent	Authorised Extent
		Groundwater Supplementation Area.	Supplementation Area.
Hamersley Rail line and associated rail infrastructure, water infrastructure for Lower Fortescue Borefield.	Figure 1	Clearing of no more than 2,324 ha of native vegetation within the 29,257 ha combined rail and rail spur corridor development envelopes.	Clearing of no more than 2,324 ha of native vegetation within the 29,257 ha combined rail and rail spur corridor development envelopes.
Lower Borefield and Associated Infrastructure.	Figure 1	Clearing of no more than 154 ha of native vegetation within the 25,092 ha Lower Borefield development envelope.	Clearing of no more than 154 ha of native vegetation within the 25,092 ha Lower Borefield development envelope.
Water supply – Lower Fortescue Borefield	Figure 1	Up to 14 Gigalitres per annum (GL/a) from the Lower Fortescue Borefield within the Lower Fortescue Borefield Development Envelope and the Railway Development Envelope.	Up to 14 Gigalitres per annum (GL/a) from the Lower Fortescue Borefield within the Lower Fortescue Borefield Development Envelope and the Railway Development Envelope.
Water Supply – Southern Borefield	Figure 2	Up to 12 GL/a from the Southern Borefield within the mine development envelope.	Up to 12 GL/a from the Southern Borefield within the mine development envelope.
<b>Power supply</b>	<b>Figure 2</b>	N/A	<b>Construction and operation of power generation facilities including renewable energy within the mine development envelope.</b>
Dewatering	Figure 1 and Figure 2	Dewatering for mining to be confined within the Channel Iron Deposit and within the mine development envelope.	Dewatering for mining to be confined within the Channel Iron Deposit and within the mine development envelope.

Element	Location	Previously Authorised Extent	Authorised Extent
Dewater disposal	Figure 1 and Figure 2	Processing and operational water supply requirements.	Processing and operational water supply requirements.
Backfilling of mine pits	Figure 1 and Figure 2	Pits to be backfilled to an extent that prevents the formation of pit lakes.	Pits to be backfilled to an extent that prevents the formation of pit lakes.

Note: Text in **bold** in Table 2 indicates a change to the proposal.

**Table 3: Abbreviations**

Abbreviation	Term
<b>CEO</b>	The Chief Executive Officer of the Department of the Public Service of the State responsible for the administration of section 48 of the Environmental Protection Act 1986, or the <b>CEO's</b> delegate.
<b>'Good to Excellent' condition native vegetation</b>	Means the condition of native vegetation rated in accordance with the <i>Technical guidance – Flora and vegetation surveys for environmental impact assessment (EPA 2016)</i> including any revision to this technical guidance.
<b>Conservation Significant</b>	Species that are listed under the <i>Environment Protection and Biodiversity Conservation Act 1999</i> and <i>Wildlife Conservation Act 1950</i> , and the Department of Biodiversity, Conservation and Attractions Priority Species that are likely to have their conservation status changed by the proposal.
<b>EP Act</b>	<i>Environmental Protection Act 1986</i>
<b>EPA</b>	Environmental Protection Authority
<b>GL/a</b>	Gigalitre per annum
<b>ha</b>	Hectare
<b>Mine Development Envelope</b>	The maximum area within which the proposal will be located and defined by coordinates in Schedule 1 of Attachment 2.
<b>Riparian Vegetation</b>	The distinctive vegetation associated with a wetland or watercourse. [Department of Environment and Conservation – <i>Native vegetation clearing legislation in Western Australia (Version 2 April 2010)</i> ].  For the purpose of the offset calculation, riparian vegetation is classified as vegetation units within the riparian zone, comprising the eleven vegetation mapping units described in Figure 8 of the Response to Submissions document (FMG, 2016)
<b>Semi-permanent pools</b>	A pool that is present in most years but will dry out during periods of drought when groundwater levels fall below the level of the pool.

**Figures (attached)**

Figure 1: Regional Location of Proposal

Figure 2: Mine Development Envelope and Revised Indicative Disturbance Footprint

Figure 3: Groundwater Dependent Vegetation and Potentially groundwater dependent vegetation associated with Weelumurra Creek

Figure 4: Potentially groundwater dependent vegetation associated with the Lower Fortescue Borefield

Figure 5: Extent of Lignite in the Queens area

All figures represent the coordinates referenced in Schedule 1 of Attachment 2.



**Darren Walsh**

CHAIR

Environmental Protection Authority

*For the Minister for Environment under Notice of Delegation under section 18 of the Environmental Protection Act 1986*

Approval date: 04 March 2026

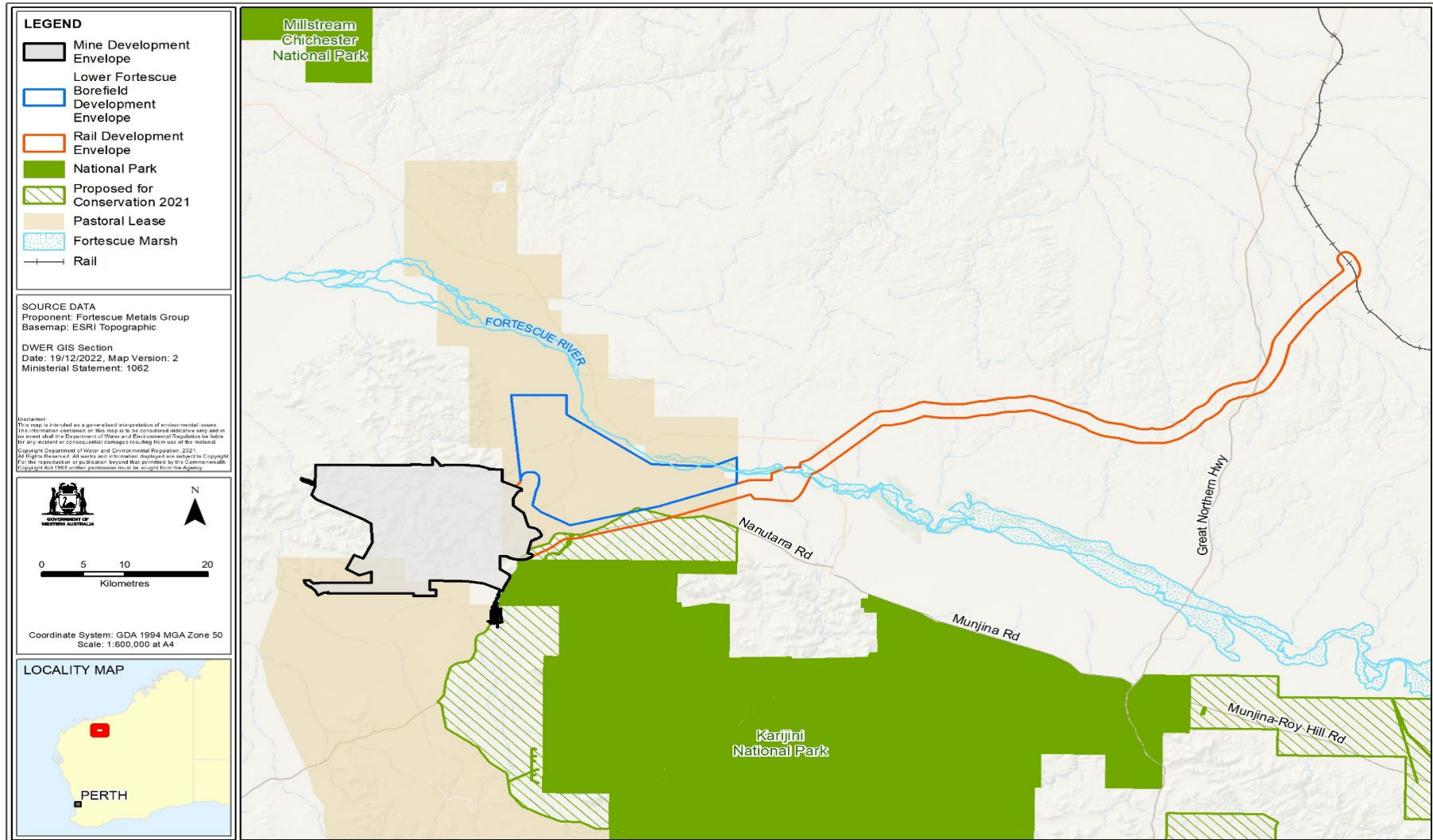
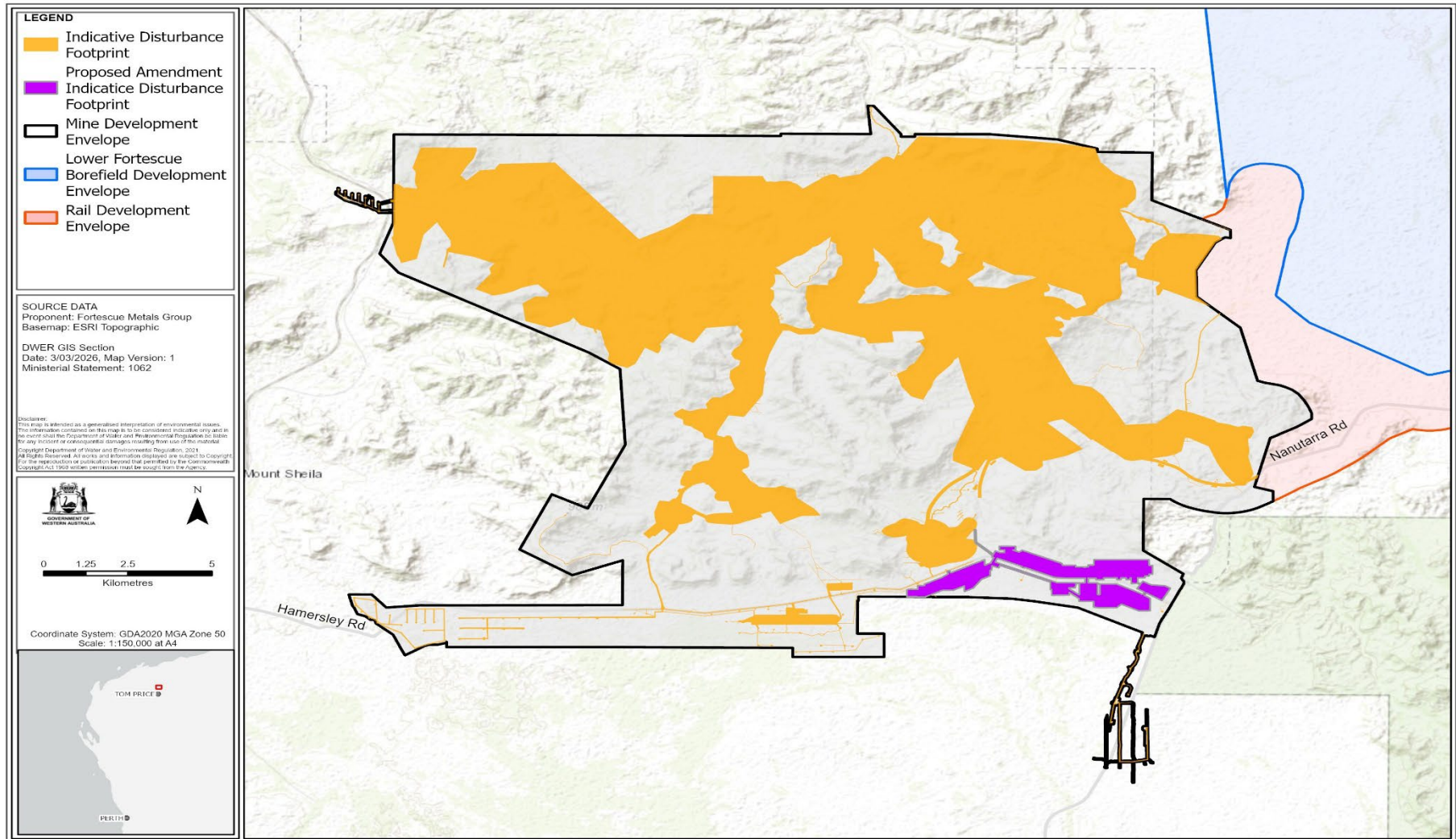


Figure 1 Regional Location of Proposal



Path: \\?J:\gis\projects\Project\EPA\_Series\Projects\EIA\s38\2014\_0000880620\_SolomonIronOreSustainingProduction\5\_PostAssessment\Att2\_UpdatedIndicativeFootprint\_20260220\ArcPro\2014\_0000880620\_SolomonIronOreSustainingProduction\_Att2\2014\_0000880620\_SolomonIronOreSustainingProduction\_A

Figure 2 Mine Development Envelope and Revised Indicative Disturbance Footprint

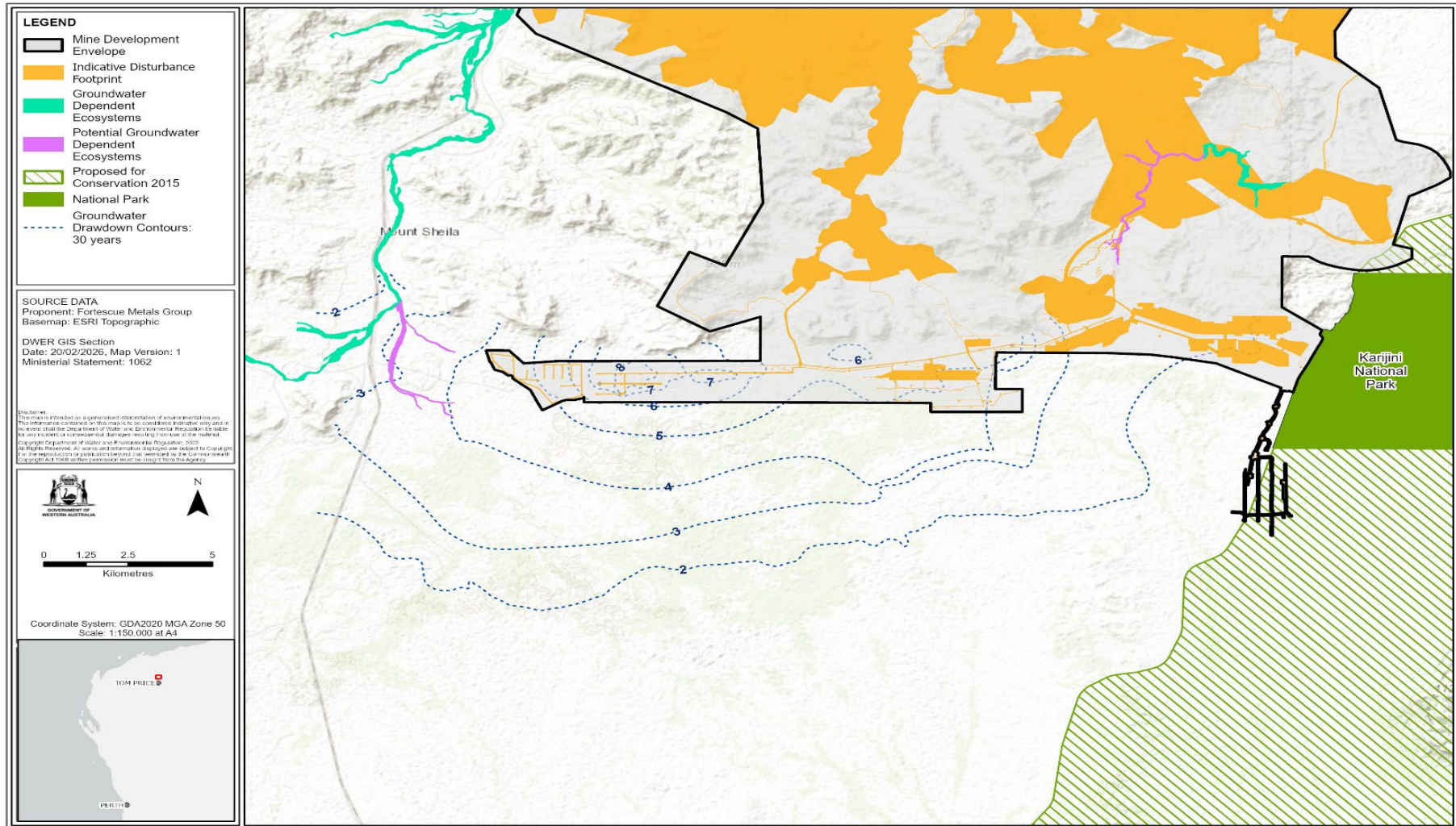


Figure 3 Groundwater Dependent Vegetation and Potentially groundwater dependent vegetation associated with Weelumurra Creek

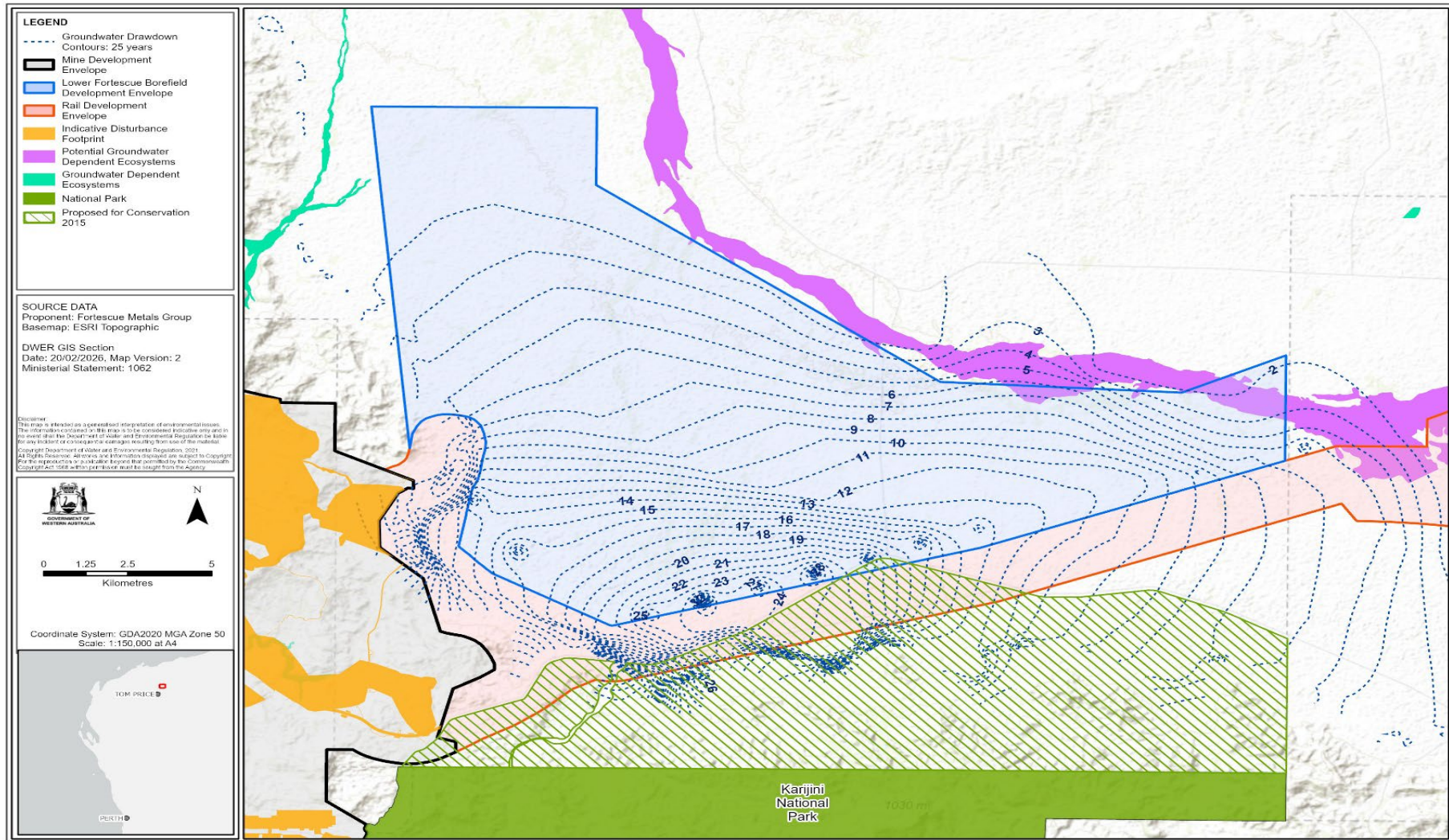


Figure 4 Potentially groundwater dependent vegetation associated with the Lower Fortescue Borefield



Figure 5 Extent of Lignite in the Queens area

**Schedule 1**

All co-ordinates are in metres, listed in Map Grid of Australia Zone 51 (MGA Zone 51), datum of Geocentric Datum of Australia 2020 (GDA 2020).

Spatial data depicting the figures are held by the Department of Water and Environmental Regulation. Record no. DWER-595873189-23298.