

THIS DOCUMENT

This document has been produced by the Office of the Appeals Convenor as an electronic version of the original Statement for the proposal listed below as signed by the Minister and held by this Office. Whilst every effort is made to ensure its accuracy, no warranty is given as to the accuracy or completeness of this document.

The State of Western Australia and its agents and employees disclaim liability, whether in negligence or otherwise, for any loss or damage resulting from reliance on the accuracy or completeness of this document.

Copyright in this document is reserved to the Crown in right of the State of Western Australia.

Reproduction except in accordance with copyright law is prohibited.

Published on: 29 May 2024

Statement No. 1222

**STATEMENT TO AMEND THE IMPLEMENTATION CONDITIONS
APPLYING TO A PROPOSAL
(Section 46 of the *Environmental Protection Act 1986*)**

PARKER RANGE (MOUNT CAUDAN) IRON ORE PROJECT

Proposal: The proposal is to develop and operate the Parker Range (Mount Caudan) Iron Ore Project located approximately 15 kilometres south-east of Marvel Loch in the Shire of Yilgarn. The proposal consists of a mining area and haul road area. The mining area includes an above and below the watertable iron ore mine, associated infrastructure and the Parker Range Bypass Road.

Proponent: Polaris Metals Pty Ltd
Australian Company Number 085 223 570

Proponent address: 1 Sleat Road
APPLECROSS WA 6153

Report of the Environmental Protection Authority: 1763

Preceding Statement/s relating to this proposal: 892, 1060, 1166

Pursuant to section 45 of the *Environmental Protection Act 1986*, as applied by section 46(8), it has been agreed that the implementation conditions set out in Ministerial Statement No. 892, be amended as specified in this Statement.

Conditions 10-1 to 10-7 of Ministerial Statement 892 are deleted and replaced with:

10 Environmental Offsets

10-1 The proponent must implement offsets to counter-balance the significant residual impacts of the proposal on the following **environmental values**:

- (1) **Malleefowl (*Leipoa ocellata*) habitat;**
- (2) **Western Rosella (*Platycercus icterotis xanthogenys*) habitat;** and
- (3) Remnant vegetation and priority flora species in a highly fragmented area

10-2 The proponent must ensure the implementation of the offsets achieves the following environmental objectives:

- (1) counterbalance the significant residual impacts listed in condition 10-1;
- (2) measurable and **tangible improvement** of habitat quality for Malleefowl (*Leipoa ocellata*) and Western Rosella (*Platycercus icterotis xanthogenys*) which is part of the *Parker Range Iron Ore Project Offset Management Plan*;
- (3) demonstrate a **strategic conservation benefit** for Malleefowl (*Leipoa ocellata*) and Western Rosella (*Platycercus icterotis xanthogenys*); and
- (4) improve connectivity of remnant vegetation through rehabilitation that achieves consistency with the species diversity and abundance of native vegetation in adjacent remnant vegetation.

Offset Environmental Management Plan

10-3 The proponent must implement the *Parker Range Iron Ore Project Offset Management Plan (ENV-TS-RP-0308-Rev 2)* that demonstrates how the environmental objectives in condition 10-2 will be achieved, and how this achievement will be substantiated.

10-4 The *Parker Range Iron Ore Project Offset Management Plan (ENV-TS-RP-0308-Rev 2)* must include the implementation of the offset measures to the extent and at the location as set out and described in Table 1:

Table 1: Environmental values, locations and extent and type of offset measures required to meet condition 10-1

Environmental value	Offset location	Extent of area to receive offset measures (hectares)	Type of offset measures
Malleefowl (<i>Leipoa ocellata</i>) Western Rosella (<i>Platycercus icterotis xanthogenys</i>) breeding and foraging habitat and remnant vegetation and priority flora species in a highly fragmented area	Lot 451 (Plan 204149) in the Shire of Yilgarn (Figure 1)	630	- land acquisition -on-ground management

10-5 The *Parker Range Iron Ore Project Offset Management Plan (ENV-TS-RP-0308-Rev 2)* must:

- (1) demonstrate how the environmental objectives in condition 10-2 will be met;
- (2) describe how the offset measures will be implemented consistent with condition 10-4;
- (3) be prepared in consultation with **DBCA** and **DCCEE**W;
- (4) spatially identify the area (**Proposed Offset Conservation Area**) in condition 10-4 as:
 - (a) **acquired** lands offset area to receive **on-ground management** offset measures; and
 - (b) offset area or lands to receive **on-ground management** offset measures.
- (5) demonstrate how the **environmental values** within the **Proposed Offset Conservation Area** will be maintained and managed in order to counterbalance the significant residual impact to the environmental value elements in condition 10-1 and achieve the environmental objectives in condition 10-2;
- (6) demonstrate application of the principles of the WA Environmental Offsets Policy, the *WA Environmental Offsets Metric* and the WA Offsets Template, as described in the *WA Environmental Offsets Guidelines*, and the *Environment Protection and Biodiversity Conservation Act 1999 Environmental Offsets Policy Assessment Guide*, or any subsequent revisions of these documents and recovery plans;
- (7) identify how the ongoing performance of the offset measures, and whether they are achieving the objectives in condition 10-2, will be made publicly available;
- (8) for the land acquisition offsets identified in condition 10-4:
 - (a) demonstrate that the **Proposed Offset Conservation Area** contain the minimum extents of the environmental values identified in condition 10-1;
 - (b) identify how the **Proposed Offset Conservation Area** will be protected, being either the sites are ceded to the Crown for the purpose of management for conservation, or the sites are managed under other suitable mechanism for the purpose of conservation as agreed by the **CEO** by notice in writing;

- (c) specify the quantum of works associated with establishing the **Proposed Offset Conservation Area**; and
 - (d) identify the **relevant management body** for the on-going management of the **Proposed Offset Conservation Area**, including its role, and the role of the proponent, and confirmation in writing that the **relevant management body** accepts responsibility for its role.
- (9) For **on-ground management** offsets identified in condition 10-4:
- (a) state the targets for each **environmental value** to be achieved by the **on-ground management**, including completion criteria, which will result in a **tangible improvement** to the **environmental values** being offset.
 - (b) demonstrate the consistency of the targets with the environmental objectives in condition 10-2 and the objectives of any relevant guidance, including but not limited to, recovery plans or area management plans;
 - (c) detail the **on-ground management** actions, with associated timeframes for implementation and completion, to achieve the targets identified in condition 10-5(9)(a); and
 - (d) detail the monitoring, reporting and evaluation mechanisms for the targets identified under condition 10-5(9)(a).

10-6 Upon being required to implement the Parker Range Iron Ore Project Offset Management Plan (ENV-TS-RP-0308-Rev 2) under Condition 10-3, the proponent must:

- (1) implement the most recent version of the **confirmed** *Parker Range Iron Ore Project Offset Management Plan*; and
- (2) continue to implement the *Parker Range Iron Ore Project Offset Management Plan* referred to in condition 10-6 (1) until the **CEO** has confirmed by notice in writing that it has been demonstrated that the relevant requirements for the *Parker Range Iron Ore Project Offset Management Plan* have been met, or are able to be met, under another statutory decision-making process, and the implementation of the *Parker Range Iron Ore Project Offset Management Plan* is no longer required.

10-7 The proponent:

- (1) may review and revise the *Parker Range Iron Ore Project Offset Management Plan* provided it meets the relevant requirements of that environmental management plan, including any consultation that may be required when preparing the environmental management plan; and

- (2) must review and revise the *Parker Range Iron Ore Project Offset Management Plan* and ensure it meets the relevant requirements of that plan, including any consultation that may be required when preparing the environmental management plan, as and when directed by the **CEO**.
- 10-8 Despite condition 10-6, but subject to conditions 10-9 and 10-10, the proponent may implement minor revisions to the *Parker Range Iron Ore Project Offset Management Plan* if the revisions will not result in new or increased adverse impacts to the environment or result in a risk to the achievement of the limits, outcomes or objectives which the *Parker Range Iron Ore Project Offset Management Plan* is required to achieve.
- 10-9 If the proponent is to implement minor revisions to the *Parker Range Iron Ore Project Offset Management Plan* under condition 10-8, the proponent must provide the **CEO** and **DCCEEW** with the following at least twenty (20) business days before it implements the revisions:
- (1) the revised offset management plan clearly showing the minor revisions;
 - (2) an explanation of and justification for the minor revisions; and
 - (3) an explanation of why the minor revisions will not result in new or increased adverse impacts to the environment or result in a risk to the achievement of the limits, outcomes or objectives which the offset management plan is required to achieve.
- 10-10 The proponent must cease to implement any revisions of the *Parker Range Iron Ore Project Offset Management Plan* which the **CEO** notifies the proponent (at any time) in writing may not be implemented.
- 10-11 The *Parker Range Iron Ore Project Offset Management Plan*, and any revision to this plan under condition 10-7, must be published on the proponent's website and provided to the **CEO** in electronic form suitable for online publication by the Department of Water and Environmental Regulation within twenty (20) business days of being implemented, or being required to be implemented (whichever is earlier).

Contingency offsets

- 10-12 If, after receiving the ongoing performance review of the offsets and monitoring, reporting and evaluation required by condition 10-5 (7) and 10-5 (9) (d), the **CEO**, in consultation with **DCCEEW**, determines that the proposal has not met the environmental objectives in condition 10-2, and after notifying the proponent in writing, the proponent must undertake an additional offset to counterbalance the significant residual impact that is not counterbalanced to Malleefowl (*Leipoa ocellata*) habitat, Western Rosella (*Platycercus icterotis xanthogenys*) habitat and remnant vegetation and priority flora species.

10-13 Within twelve (12) months of receiving notice in writing from the **CEO** that an additional offset is required under condition 10-12 the proponent must update the *Parker Range Iron Ore Project Offset Management Plan (ENV-TS-RP-0308-Rev 2)* required by condition 10-3 to include acquiring additional offsets to counterbalance the significant residual impacts to Malleefowl (*Leipoa ocellata*) habitat, Western Rosella (*Platycercus icterotis xanthogenys*) habitat and remnant vegetation and priority flora species.

[signed on 29 May 2024]

Hon Reece Whitby MLA

MINISTER FOR ENVIRONMENT; CLIMATE ACTION

Affected decision-making authorities consulted under section 46(8A):
Minister for Water Minister for Aboriginal Affairs Minister for Lands

Table 2: Abbreviations and definitions

Acronym or abbreviation	Definition or term
Acquired	The protection of environmental values on an area of initially unprotected land for the purpose of conservation through improved security of tenure or restricting the use of land (e.g. ceding land to the Crown or perpetual conservation covenants). This includes upfront costs of establishing the offset site and the on-going management of costs of maintaining the offset for the long term (e.g. 20 years).
CEO	The Chief Executive Officer of the Department of the Public Service of the State responsible for the administration of section 48 of the <i>Environmental Protection Act 1986</i> , or the CEO's delegate.
DBCA	The government agency responsible for the administration of the <i>Biodiversity Conservation Act 2016</i> , which at the time of this Ministerial Statement is the Department of Biodiversity, Conservation and Attractions.
DCCEEW	The government agency responsible for the administration of the Environment Protection and Biodiversity Conservation Act, which at the time of this Ministerial Statement is the Department of Climate Change, Energy, the Environment and Water.
Environmental value	A beneficial use, or ecosystem health condition (from EP Act)
Malleefowl (<i>Leipoa ocellata</i>) habitat	Habitat types including Mallee over Shrubland, Mid to Tall Shrubland, Open Woodland and Low Open Shrubland.
On-ground management	This includes revegetation (re-establishment of native vegetation in degraded areas) and rehabilitation (repair of ecosystem processes and management of weeds, disease or feral animals) with the objective to achieve a tangible improvement to the environmental values in the offset area.
Proposed Offset Conservation Area	The land identified in condition 10-4
Relevant management body	A party or parties that has a role in the establishment and/or ongoing management of the Proposed Offset Conservation Area. Note: This includes the role of the proponent.
Strategic conservation benefit	Overall or long-term improvements in ecological resilience and/or function.
Tangible improvement	A perceptible, measurable and definable improvement that provides additional ecological benefit and/or value.
Western Rosella (<i>Platycercus icterotis xanthogenys</i>) habitat	Habitat types including Open Eucalypt woodland

Figures (attached)

Figure 1 Lot 451 offset and rehabilitation area

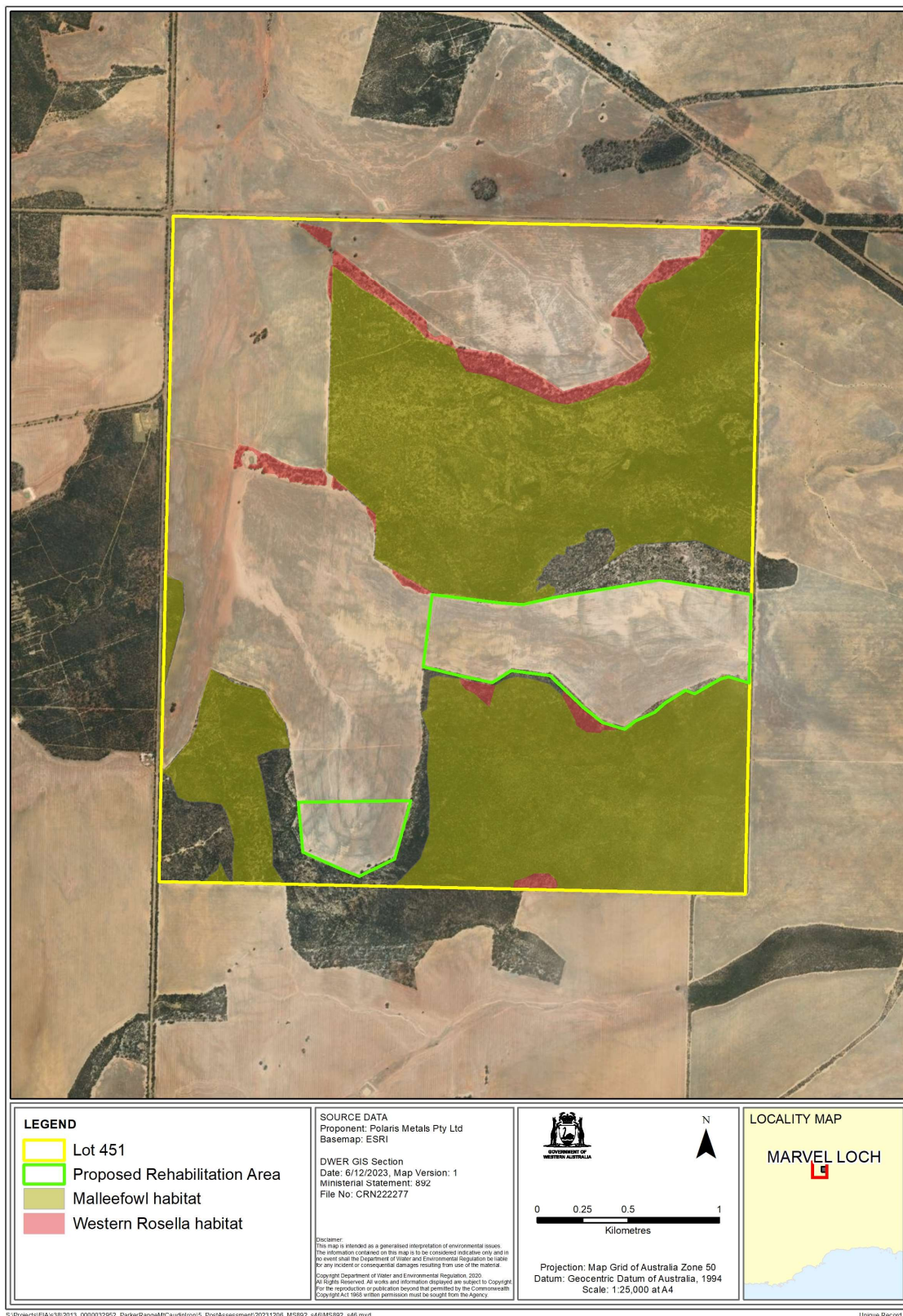


Figure 1 Lot 451 offset and rehabilitation area

All coordinates are in metres, listed in Map Grid of Australia Zone 50 (MGA Zone 50), datum of Geocentric Datum of Australia 2020 (GDA20).

Spatial data depicting the figures are held by the Department of Water and Environmental regulation. Record no. APP-0000556.