

STATUS OF THIS DOCUMENT

This document has been produced by the Office of the Appeals Convenor as an electronic version of the original Statement for the proposal listed below as signed by the Minister and held by this Office. Whilst every effort is made to ensure its accuracy, no warranty is given as to the accuracy or completeness of this document. The State of Western Australia and its agents and employees disclaim liability, whether in negligence or otherwise, for any loss or damage resulting from reliance on the accuracy or completeness of this document. Copyright in this document is reserved to the Crown in right of the State of Western Australia. Reproduction except in accordance with copyright law is prohibited.

Published on: 4 November 2010

Statement No: 845

**STATEMENT THAT A PROPOSAL MAY BE IMPLEMENTED
(PURSUANT TO THE PROVISIONS OF THE
ENVIRONMENTAL PROTECTION ACT 1986)**

Southern Sources Integration Assets (SSIA) Pipeline Corridor

Proposal: Identification of potential corridors and areas for future installation of water and wastewater pipelines and associated infrastructure throughout the southern suburbs of Perth.

Proponent: Water Corporation

Proponent Address: Water Corporation
John Tonkin Centre
629 Newcastle Street
Leederville WA 6007

Assessment Number: 1659

Report of the Environmental Protection Authority: Report 1367

The derived proposals identified in the strategic proposal referred to in the above report of the Environmental Protection Authority may be implemented. The implementation of the derived proposals shall be subject to the following conditions and procedures (subject to the Minister for Environment's identification of relevant conditions under section 45A(3) of the *Environmental Protection Act 1986*).

1 Proponent Nomination and Contact Details

- 1-1 The proponent for the time being nominated by the Minister for Environment under sections 38(6) or 38(7) of the *Environmental Protection Act 1986* is responsible for the implementation of the proposal.
- 1-2 The proponent shall notify the Chief Executive Officer of the Office of the Environmental Protection Authority of any change of the name and address of the proponent for the serving of notices or other correspondence within 30 days of such change.

2 Time Limit of Authorisation for Strategic Proposal

- 2-1 The authorisation provided for in this statement to request a derived proposal under section 39B(1) of the *Environmental Protection Act 1986* shall lapse and be void 50 years after the date of this statement.

3 Time Limit of Authorisation for a Derived Proposal

- 3-1 The authorisation to implement a derived proposal provided for in this statement shall lapse and be void five years after the declaration by the Environmental Protection Authority under section 39B(3) of the *Environmental Protection Act 1986* that the proposal is a derived proposal.

4 Compliance Reporting

- 4-1 The proponent shall prepare and maintain a compliance assessment plan to the satisfaction of the Chief Executive Officer of the Office of the Environmental Protection Authority.
- 4-2 The proponent shall submit to the Chief Executive Officer of the Office of the Environmental Protection Authority, the compliance assessment plan required by Condition 4-1 at least 6 months prior to the first compliance report required by Condition 4-6, or prior to ground disturbing activities, whichever is sooner.

The compliance assessment plan shall indicate:

- 1 the frequency of compliance reporting;
 - 2 the approach and timing of compliance assessments;
 - 3 the retention of compliance assessments;
 - 4 reporting of potential non-compliances and corrective actions taken;
 - 5 the table of contents of compliance reports; and
 - 6 public availability of compliance reports.
- 4-3 The proponent shall assess compliance with conditions in accordance with the compliance assessment plan required by Condition 4-1.
- 4-4 The proponent shall retain reports of all compliance assessments described in the compliance assessment plan required by Condition 4-1 and shall make those reports available when requested by the Chief Executive Officer of the Office of the Environmental Protection Authority.
- 4-5 The proponent shall advise the Chief Executive Officer of the Office of the Environmental Protection Authority of any potential non-compliance within 7 days of such awareness.

- 4-6 The proponent shall submit a compliance assessment report, annually from the date of this statement addressing the previous twelve month period or other frequency or period as agreed by the Chief Executive Officer of the Office of the Environmental Protection Authority. The compliance assessment report shall:
- 1 be endorsed by the proponent's Managing Director or a person, approved in writing by the Office of the Environmental Protection Authority, delegated to sign on the Managing Director's behalf;
 - 2 include a statement as to whether the proponent has complied with the conditions;
 - 3 identify all potential non-compliances and describe corrective and preventative actions taken;
 - 4 be made publicly available in accordance with the approved compliance assessment plan; and
 - 5 indicate any proposed changes to the compliance assessment plan required by Condition 4-1.

5 Construction Environmental Management System

- 5-1 The proponent shall implement future proposals in accordance with the Construction Environmental Management System (Appendix A, of Southern Sources Integration Assets, draft Strategic Environmental Assessment Report, Water Corporation, October 2009) or revisions of it approved under Condition 5-2.
- 5-2 The proponent shall submit any revisions of the Construction Environmental Management System to the Chief Executive Officer of the Office of the Environmental Protection Authority. The revisions shall be prepared to the satisfaction of the Chief Executive Officer of the Office of the Environmental Protection Authority.

6 Construction Audit Report

- 6-1 The proponent shall undertake a compliance audit against performance indicators defined in the approved Construction Environmental Management System of Condition 5-1 and prepare a Construction Audit Report within six months of the completion of construction of the derived proposal.
- 6-2 The Construction Audit Report will be submitted with any subsequent request by the proponent for a referred proposal to be considered a derived proposal under section 39B(1) of the Environmental Protection Act 1986, and will be taken into account as 'new information' (as referred to in section 39B[4][b] of the Environmental Protection Act 1986) in the Environmental Protection Authority's decision on that request.

[signed 3 November 2010]

Hon Donna Faragher JP MLC
MINISTER FOR ENVIRONMENT; YOUTH

The Strategic Proposals and Identification of Derived Proposals (Assessment No.1659)

The Strategic Proposal is to secure corridors necessary for future installation of potable and/or wastewater in the South Metropolitan area by the year 2050. This also includes the Tamworth Hill Reservoir duplication and upgrade of chlorination and pumping facilities and intermediate booster pump station.

Derived proposals are expected to:

- include the construction of;
 - pipelines along various routes (A,B,C,D,E,1,2,3,4,5,6)
 - a pump station;
 - a reservoir at Tamworth Hill; and

- be consistent with the description of;
 - location;
 - proposed environmental management; and
 - predicated environmental impacts,

provided in the Southern Sources Integration Assets, draft Strategic Environmental Assessment Report, Water Corporation, October 2009.

The main characteristics of the derived proposals are summarised in Table 1 below. These characteristics will be used by the Environmental Protection Authority to guide its decision on any request to declare the referred proposal to be a derived proposal. A detailed description of the strategic proposal, in relation to potential environmental impacts, is provided in Executive Summary Table 2 Matrix of Route vs. Environmental Issues and Chapter 3 of Southern Sources Integration Assets, Strategic Environmental Assessment Report, Water Corporation, October 2009.

Summary of Key Derived Proposal Characteristics

Table 1: Summary of Key Proposal Characteristics for Pipeline Route A

Location	As per Figure 1 Route Alignments proposed in the project area and the document Southern Sources Integration Assets, Strategic Environmental Assessment Report, Water Corporation, October 2009 and as recorded in the OEPA spatial database of EIA referrals from data provided by the proponent.
Significant flora and vegetation	
Site	Potential impact
Bush Forever Site 356 Tamworth Hill Reservoir, Baldivis.	Clearing of approximately 0.6 hectares.
Bush Forever Site 360 Munjong Road, Mundijong.	No impact, as tunnel boring will be used at this site.
TEC Eighty Road, Baldivis.	Clearing of approximately 1.5 hectares of SCP20b.
TEC Mundijong Road.	No impact as tunnel boring will be used under SCP03a at crossing, aligning pipeline to avoid tap roots of large trees (specifically

	<i>Corumbia calophylla</i>).
DRF Mundijong Road.	No impact as tunnel boring will be used at crossings.
Heddles Vegetation Complex – Guildford.	Clearing of approximately 0.35 hectares of vegetation assessed to be of ‘degraded’ or better condition.
Heddles Vegetation Complex – Serpentine River.	Clearing of approximately 0.02 hectares of vegetation assessed to be of ‘degraded’ or better condition.
Wetlands	
Site	Potential impact
UFI 7003,7115,7873,7874 CCW	Buffer of the wetland is intersected by pipeline corridor.
Environmental Offsets for clearing CCW and their buffers, TEC, DRF and Bush Forever Sites will be provided prior to submission of the derived proposal.	

Table 2: Summary of Key Proposal Characteristics for Pipeline Route B

Location	As per Figure 1 Route Alignments proposed in the project area and the document Southern Sources Integration Assets, Strategic Environmental Assessment Report, Water Corporation, October 2009 and as recorded in the OEPA spatial database of EIA referrals from data provided by the proponent.
No significant environmental impact by construction of Route B.	

Table 3: Summary of Key Proposal Characteristics for Pipeline Route C

Location	As per Figure 1 Route Alignments proposed in the project area and the document Southern Sources Integration Assets, Strategic Environmental Assessment Report, Water Corporation, October 2009 and as recorded in the OEPA spatial database of EIA referrals from data provided by the proponent.
Significant flora and vegetation	
Site	Potential impact
TECs Bishop Road	TECs SCP03a , SCPO9 will be tunnel bored if final alignment of pipeline cannot avoid these vegetation types.
Heddles Vegetation Complex - Beermullah	Clearing of approximately 0.58 hectares of vegetation assessed to be of ‘degraded’ or better condition.
Environmental Offsets for clearing TEC will be provided prior to submission of the derived proposal.	

Table 4: Summary of Key Proposal Characteristics for Pipeline Route D

Location	As per Figure 1 Route Alignments proposed in the project area and the document Southern Sources Integration Assets, Strategic Environmental Assessment Report, Water Corporation, October 2009 and as recorded in the OEPA spatial database of EIA referrals from data provided by the proponent.
Wetlands	
Site	Potential impact
UFI 13001,13002 CCW	Buffer of the wetlands are intersected by pipeline corridors.
UFI 13003 CCW	Part of this wetland is within pipeline corridor.
Environmental Offsets for clearing CCW and their buffers will be provided prior to submission of the derived proposal.	

Table 5: Summary of Key Proposal Characteristics for Pipeline Route E

Location	As per Figure 1 Route Alignments proposed in the project area and the document Southern Sources Integration Assets, Strategic Environmental Assessment Report, Water Corporation, October 2009 and as recorded in the OEPA spatial database of EIA referrals from data provided by the proponent.
Significant flora and vegetation	
Site	Potential impact
Bush Forever Site 266 – Wungong Brook	Clearing of approximately 0.5 hectares of vegetation that has been identified as a pasture community.
TEC Mitchell Street, Wungong.	Clearing of approximately 1.62 hectares of SCP3a. Pipeline will be aligned within dirt tracks where possible. Tunnel boring of vegetation at railway crossing, aligning pipeline to avoid tap roots of large trees (specifically <i>Corumbia calophylla</i>).
TEC Alexander Road, Wungong	Clearing of approximately 0.19 hectares of SCP03a. Pipeline will be aligned within dirt tracks where possible. Tunnel boring of vegetation at railway crossing, aligning pipeline to avoid tap roots of large trees (specifically <i>Corumbia calophylla</i>).
Heddles Vegetation Complex-Guildford	Clearing of approximately 0.19 hectares of vegetation assessed to be 'degraded' or better condition.
Heddles Vegetation Complex-Beermullah	Clearing of less than 0.01 hectares of vegetation assessed to be 'degraded' or better condition.
Heddles Vegetation Complex-Forrestfield	Clearing of approximately 1.87hectares of vegetation assessed to be 'degraded' or better condition.
Wetlands	
Site	Potential impact
UFI 12152 CCW Part of series of wetland associated with Wungong Brook (Bush Forever Site 266)	Potential impact to stream bank and associated vegetation.
UFI 12149 CCW Part of series of wetland associated with Wungong Brook (Bush Forever Site 266)	Potential impact to stream bank.
UFI 12183,12186 CCW Part of small cluster of CCWs.	Wetlands are within the pipeline corridor.
UFI 12189 Part of small cluster of CCWs.	Part of the wetland is within pipeline corridor.
UFI 14179 CCW Other CCWS within close proximity.	Pipeline corridor intersects this wetland.
UFI 12150 CCW	Unlikely to be any significant impact to this remnant of palusplain vegetation.
Contamination	
Site	Potential Impact
Registered contaminated site adjacent to the proposed Route E and Route 4 pipeline corridors in Byford.	No contaminates will be drawn from the site by dewatering activities. Site will be subject to a detailed geotechnical site investigation prior to construction. A hydrological assessment to confirm no contaminates will be drawn from the site will be undertaken at time of the derived proposal.
Environmental Offsets for clearing CCW and their buffers, TEC and Bush Forever will be provided prior to submission of the derived proposal.	

Table 6: Summary of Key Proposal Characteristics for Pipeline Route 1

Location	As per Figure 1 Route Alignments proposed in the project area and the document Southern Sources Integration Assets, Strategic Environmental Assessment Report, Water Corporation, October 2009 and as recorded in the OEPA spatial database of EIA referrals from data provided by the proponent.
Wetlands	
Site	Potential Impacts
UFI 7115,7233,7280,7284 CCW	Pipeline corridors intersect these wetlands.
UFI 7090,7237,7241,7242, 7874 CCW	Buffer of the wetland is intersected by pipeline corridor
UFI 7215,7249,7283,7292, 13341,13822 RE	Pipeline corridors intersect these wetlands.
UFI 7239,7281,7282 RE	Buffer of the wetland is intersected by pipeline corridor.
Forrestdale Lake UFI 7479	The alignment runs nearby Forrestdale Lake. No environmental impacts to the lake.
Acid Sulphate Soils	
Site	Potential Impacts
The portion of Route 1 near Forrestdale Lake (UFI 7479) wetland system.	There will be no residual soil or groundwater acidity generated as a result of construction of the Southern Source Integration Asset Pipeline Corridor infrastructure. Presence of potential and actual acid sulfate soils will be determined during geotechnical surveys undertaken prior to construction. Where potential or actual acid sulfate soils are identified, they will be managed in accordance with DEC's Acid Sulfate Soils Guideline Series. Soil management will include neutralisation with an appropriate dose of Ag-lime (pulverised limestone product). Disposal of any dewatering effluent and/or disturbed groundwater will be in accordance with DEC's Acid Sulfate Soils Guideline Series.
Environmental Offsets for clearing CCW and their buffers, RE and their buffers, TEC and Bush Forever will be provided prior to submission of the derived proposal.	

Table 7: Summary of Key Proposal Characteristics for Pipeline Route 2

Location	As per Figure 1 Route Alignments proposed in the project area and the document Southern Sources Integration Assets, Strategic Environmental Assessment Report, Water Corporation, October 2009 and as recorded in the OEPA spatial database of EIA referrals from data provided by the proponent.
Significant flora and vegetation	
Site	Potential Impact
TEC Kargotich Road	No impact as tunnel boring will implemented at crossing of SCP09.
Heddles Veg Complex-Beermullah	Clearing of not more than 0.5 hectares of vegetation assessed to be 'degraded' condition.
Environmental Offsets for clearing TEC will be provided prior to submission of the derived proposal.	

Table 8: Summary of Key Proposal Characteristics for Pipeline Route 3

Location	As per Figure 1 Route Alignments proposed in the project area and the document Southern Sources Integration Assets, Strategic Environmental Assessment Report, Water Corporation, October 2009 and as recorded in the OEPA spatial database of EIA referrals from data provided by the proponent.
-----------------	---

Significant flora and vegetation	
Site	Potential Impact
Bush Forever Site 351-Cardup Brook Bushland.	Clearing of approximately 0.5 hectares of vegetation. Tunnel boring cannot be implemented at this site as it conflicts with Aboriginal Heritage values.
TEC Tonkin Highway Alignment	No impact as tunnel boring will implemented at crossing of SCP09 and SCP3a. Pipeline will be aligned to avoid tap roots of large trees (specifically <i>Corumbia calophylla</i>).
Heddles Vegetation Complex-Guildford	Clearing of approximately than 0.7 hectares of vegetation assessed as 'degraded' condition.
Heddles Vegetation Complex-Beermullah	Clearing of approximately 0.3 hectares of vegetation assessed as 'degraded' condition.
Wetlands	
Site	Potential Impact
UFI 7115,7688 CCW	Pipeline corridor intersects these wetlands.
UFI 7874 CCW	Buffer of the wetland is intersected by pipeline corridor.
UFI 13901,14090,14091 RE	Pipeline corridors intersect these wetlands . This area is also within Bush Forever Site 351. Some vegetation will be required to be cleared as tunnel boring can not be implemented at this site as it conflicts with Aboriginal Heritage values.
Environmental Offsets for clearing CCW and their buffers, RE and their buffers, TEC and Bush Forever will be provided prior to submission of the derived proposal.	

Table 9: Summary of Key Proposal Characteristics for Pipeline Route 4

Location	As per Figure 1 Route Alignments proposed in the project area and the document Southern Sources Integration Assets, Strategic Environmental Assessment Report, Water Corporation, October 2009 and as recorded in the OEPA spatial database of EIA referrals from data provided by the proponent.
Significant flora and vegetation	
Site	Potential Impact
Bush Forever Site 350 – Soldiers Road, Robertson Road, Patterson Road.	No clearing of significant vegetation at this site. The remnant vegetation is considered to be suitable habitat for Carnaby's Black Cockatoo. Pipeline will be instated underneath the road along Soldiers and Patterson Roads.
TECs SCP08, SCP09 Soldiers and Patterson Roads	No impact as the pipeline will be going underneath existing bitumen and tunnel boring techniques will be implemented at crossings.
Heddles Vegetation Complex-Forrestfield	Clearing of approximately 1.78 hectares of vegetation assessed as 'degraded' or 'better' condition. No vegetation will be cleared along Soldiers and Patterson Roads as the pipeline will go underneath the road. Where the route crosses the railway reserve, tunnel boring techniques will be employed.
Heddles Vegetation Complex-Guildford	Clearing of approximately 0.5 hectares of vegetation assessed as 'degraded' or better condition. No vegetation will be cleared along Soldiers and Patterson Roads as pipeline will go underneath the road. Where the route crosses the railway reserve, tunnel boring techniques will be employed.
Wetlands	
Site	Potential Impact
UFI 7115, 7841, 7992, 8008, 12152, 12154, 13010, 14268, 14271 CCW.	Pipeline corridor intersect these wetlands.
UFI 7835,7837,7874,12158, 13001,13002,13005,13006,14265,14273 CCW	Buffer of the wetland is intersected by pipeline corridor.
UFI 13004,13008 RE	Pipeline corridor intersect these wetlands.
UFI 13009, 13911 RE	Buffer of the wetland is intersected by pipeline corridor.

Contamination	
Site	Potential Impacts
Registered contaminated site adjacent to the proposed Route E and Route 4 pipeline corridors in Byford.	No contaminants will be drawn from the site by dewatering activities. Site will be subject to a detailed geotechnical site investigation prior to construction. A hydrological assessment to confirm no contaminants will be drawn from the site will be undertaken at time of the derived proposal.
Environmental Offsets for clearing CCW and their buffers, RE and their buffers, TEC and Bush Forever will be provided prior to submission of the derived proposal.	

Table 10: Summary of Key Proposal Characteristics for Pipeline Route 5

Location	As per Figure 1 Route Alignments proposed in the project area and the document Southern Sources Integration Assets, Strategic Environmental Assessment Report, Water Corporation, October 2009 and as recorded in the OEPA spatial database of EIA referrals from data provided by the proponent.
Significant flora and vegetation	
Site	Potential Impact
Bush Forever Site 345 – Nicholson Road, Forrestdale	Clearing of approximately 0.1 hectares of vegetation assessed to be ‘completely degraded’ to ‘degraded’ condition.
Wetlands	
Site	Potential Impact
UFI 14172 CCW	Pipeline corridor intersects this wetland.
Acid Sulphate Soils	
Site	Potential Impact
Northern Portion of Route 5	There will be no residual soil or groundwater acidity generated as a result of construction of the Southern Source Integration Asset Pipeline Corridor infrastructure. Presence of potential and actual acid sulfate soils will be determined during geotechnical surveys undertaken prior to construction. Where potential or actual acid sulfate soils are identified, they will be managed in accordance with DEC’s Acid Sulfate Soils Guideline Series. Soil management will include neutralisation with an appropriate dose of Ag-lime (pulverised limestone product). Disposal of any dewatering effluent and/or disturbed groundwater will be in accordance with DEC’s Acid Sulfate Soils Guideline Series.
Environmental Offsets for clearing CCW and their buffers and Bush Forever will be provided prior to submission of the derived proposal.	

Table 11: Summary of Key Proposal Characteristics for Pipeline Route 6

Location	As per Figure 1 Route Alignments proposed in the project area and the document Southern Sources Integration Assets, Strategic Environmental Assessment Report, Water Corporation, October 2009 and as recorded in the OEPA spatial database of EIA referrals from data provided by the proponent.
Significant flora and vegetation	
Site	Potential Impact
Bush Forever Site 365- Wright Road, Mardella	Clearing of approximately 2.5 hectares of vegetation assessed to be ‘completely degraded’ to ‘degraded’ condition.
TEC’s Wright Road, Mardella	Clearing of approximately 0.3 hectares of SCP09 at Southern portion of route. At crossing of SCP09, SCP20b within rail reserves, tunnel boring techniques will be implemented.
Heddle’s Vegetation Complex-Guildford	Clearing of less than 0.5 hectares vegetation assessed to be ‘degraded’ condition.

Wetlands	
Site	Potential Impact
UFI 7873,7875,7250,7850 CCW	Buffer of wetland is intersected by pipeline corridor.
Environmental Offsets for clearing CCW and their buffers, TEC and Bush Forever will be provided prior to submission of the derived proposal.	

Table 12: Summary of Key Proposal Characteristics for Tamworth Hill Reservoir

Location	As per Figure 1 Route Alignments proposed in the project area and the document Southern Sources Integration Assets, Strategic Environmental Assessment Report, Water Corporation, October 2009 and as recorded in the OEPA spatial database of EIA referrals from data provided by the proponent.
Significant flora and vegetation	
Site	Potential Impact
Bush Forever 356	Clearing of approximately 4.0 hectares of vegetation in the Bush Forever Site 356. Impact to be offset by the transfer of Water Corporation owned freehold land to be vested with the Conservation Commission of Western Australia under the <i>Conservation and Land Management Act 1984 (CALM Act 1984)</i> . The freehold land to be vested is Lots 1-6 Henderson Road and Lots 21-25 Lorimer Road, Munster as shown in Figure 5.1of the Southern Sources Integration Assets, Strategic Environmental Assessment Report, Water Corporation, October 2009.

Table 13: Summary of Key Proposal Characteristics for Booster Pump Station.

Location	As per Figure 1 Route Alignments proposed in the project area and the document Southern Sources Integration Assets, Strategic Environmental Assessment Report, Water Corporation, October 2009 and as recorded in the OEPA spatial database of EIA referrals from data provided by the proponent.
No significant impact arising from construction of booster pump station.	

Note:

TEC	Threatened Ecological Community
SCPXXx	Swan Coastal Plain vegetation community type XXx (for example SCP20b)
UFI xxx CCW	Unique Feature Identifier xxx Conservation Category Wetlands
UFI xxx RE	Unique Feature Identifier xxx Resource Enhancement Category Wetlands
'Degraded'	As defined in Keighery BJ, 1994 Bushland Plant Survey: A Guide to Plant Community Survey for the Community, Wildflower Society of WA (Inc.), Nedlands Western Australia.
'Completely Degraded'	As defined in Keighery BJ, 1994 Bushland Plant Survey: A Guide to Plant Community Survey for the Community, Wildflower Society of WA (Inc.), Nedlands Western Australia.

Figure:

Figure 1: Route Alignments Proposed in the SSIA Project Area

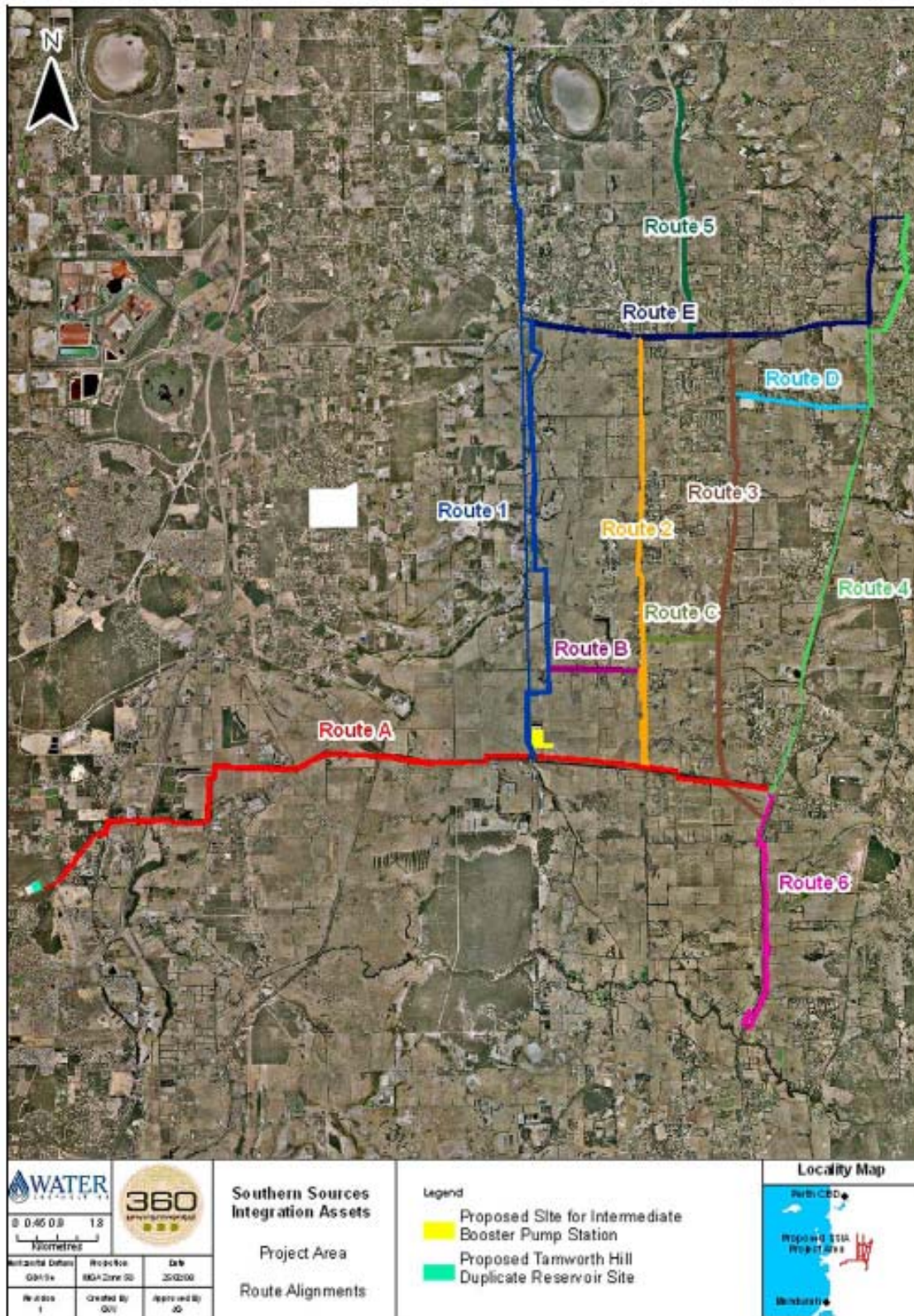


Figure 1: Route Alignments Proposed in the SSIA Project Area