

## ***STATUS OF THIS DOCUMENT***

*This document has been produced by the Office of the Appeals Convenor as an electronic version of the original Statement for the proposal listed below as signed by the Minister and held by this Office. Whilst every effort is made to ensure its accuracy, no warranty is given as to the accuracy or completeness of this document. The State of Western Australia and its agents and employees disclaim liability, whether in negligence or otherwise, for any loss or damage resulting from reliance on the accuracy or completeness of this document. Copyright in this document is reserved to the Crown in right of the State of Western Australia. Reproduction except in accordance with copyright law is prohibited.*

Published on 3 December 2008

Statement No.000776

### **STATEMENT THAT A REVISED PROPOSAL MAY BE IMPLEMENTED (PURSUANT TO THE PROVISIONS OF THE ENVIRONMENTAL PROTECTION ACT 1986)**

MESA K REMNANT MINING PROJECT, 11KM SOUTH-WEST OF THE TOWN OF  
PANNAWONICA, SHIRE OF ASHBURTON

**Proposal:** To undertake mining of up to 12 – 13 Mt of remnant iron ore in the previously mined Mesa K deposit to meet the shortfall of dry ore produced from Mesa J. The proposal will utilise the existing Mesa J equipment fleet, personnel and infrastructure.

**Proponent:** Robe River Mining Company Pty Ltd

**Proponent Address:** 152-158 St Georges Terrace, Perth 6000

**Assessment number:** 1728

**Report of the Environmental Protection Authority:** Bulletin 1283

**Minister's appeal determination:** 025 and 026 of 2008

The proposal referred to in the above report of the Environmental Protection Authority may be implemented. The implementation of that proposal is subject to the following conditions and procedures:

#### **1 Proposal Implementation**

1-1 The proponent shall implement the proposal as assessed by the Environmental Protection Authority and described in schedule 1 of this statement subject to the condition and procedures of this statement.

#### **2 Proponent Nomination and Contact Details**

2-1 The proponent for the time being nominated by the Minister for the Environment under sections 38(6) or 38(7) of the *Environmental Protection Act 1986* is responsible for the implementation of the proposal.

Published on

2-2 The proponent shall notify the Chief Executive Officer of the Department of Environment and Conservation (CEO) of any change of the name and address of the proponent for the serving of a notice or other correspondence within 30 days of such change.

### **3 Time Limit of Authorisation**

3-1 The authorisation to implement the proposal provided for in this statement shall lapse and be void within five years after the date of this statement if the proposal to which this statement relates is not substantially commenced.

3-2 The proponent shall provide the CEO with written evidence which demonstrates that the proposal has substantially commenced on or before the expiration of five years from the date of this statement.

### **4 Compliance Reporting**

4-1 The proponent shall submit to the CEO environmental compliance reports annually reporting on the previous twelve-month period, unless required by the CEO to report more frequently.

4-2 The environmental compliance reports shall address each element of an audit program approved by the CEO and shall be prepared and submitted in a format acceptable to the CEO.

4-3 The environmental compliance reports shall:

1. be endorsed by signature of the proponent's chief executive officer or a person, approved in writing by the CEO, delegated to sign on behalf of the proponent's chief executive officer;
2. state whether the proponent has complied with each condition and procedure contained in this statement;
3. provide verifiable evidence of compliance with each condition and procedure contained in this statement;
4. state whether the proponent has complied with each key action contained in any environmental management plan or program required by this statement;
5. provide verifiable evidence of conformance with each key action contained in any environmental management plan or program required by this statement;
6. identify all non-compliances and non-conformances and describe the corrective and preventative actions taken in relation to each non-compliance or non-conformance;
7. provide an assessment of the effectiveness of all corrective and preventative actions taken; and
8. describe the state of implementation of the proposal.

4-4 The proponent shall make the environmental compliance reports required by condition 4-1 publicly available in a manner approved by the CEO.

## **5 Performance Review and Reporting**

5-1 The proponent shall submit to the CEO a Performance Review Report at the conclusion of the first, second, third and fifth years after the start of production and then, at such intervals as the CEO may regard as reasonable, which addresses:

1. the major environmental risks and impacts, the performance objectives, standards and criteria related to these, the success of risk reduction/impact mitigation measures and results of monitoring related to management of the major risks and impacts;
2. the level of progress in the achievement of sound environmental performance, including industry benchmarking, and the use of best available technology where practicable; and
3. significant improvements gained in environmental management that could be applied to this and other similar projects.

## **6 Protection of troglofauna**

6-1 The proponent shall implement the proposal to avoid disturbance of areas where troglofauna taxa represented by only one individual have been recorded as shown in Figure 4 attached and delineated by AMG coordinates listed in Schedule 2.

6-2 The proponent shall establish a monitoring regime to the requirements of the Minister for the Environment on advice of the Environmental Protection Authority to demonstrate the effectiveness of the disturbance avoidance areas as shown in Figure 4 attached and delineated by AMG coordinates listed in Schedule 2.

## **7 Rehabilitation**

7-1 The proponent shall implement the proposal to achieve stable, self-sustaining and functioning ecosystem(s) that is/are consistent with the surrounding landscape and maintain(s) key environmental values over the long-term and to the satisfaction of the CEO of the Department of Environment and Conservation.

### **Notes**

1. The Environmental Protection Authority may seek advice from other agencies or organisations, as required, in order to provide its advice to the Department of Environment and Conservation.
2. The Minister for the Environment will determine any dispute between the proponent and the Environmental Protection Authority or the Department of Environment and Conservation over the fulfilment of the requirements of the conditions.

Hon Donna Faragher JP MLC  
**MINISTER FOR ENVIRONMENT; YOUTH**

**The Proposal (Assessment No. 1728)**

**General Description**

The proposal is to mine the remnant iron ore in the previously mined Mesa K deposit located on Mining Lease AML 70/00248 Sec 104. The Mesa K deposit was previously mined from 1988 to 1995, producing approximately 48.2 Mt of pisolite ore. The Mesa J iron ore mining operation, managed by the proponent, is also located on Mining Lease AML 70/00248 Sec 104. The proposed Mesa K Remnant Mining Project is intended to meet the shortfall of dry ore produced from Mesa J and will be operated as a satellite project to the current Mesa J operation. The proposal will utilise the existing Mesa J equipment fleet, personnel and infrastructure.

The proposal is described in the following document – *Mesa K Remnant Mining Project Environmental Protection Statement, January 2008*.

**Summary Description**

A summary of the key proposal characteristics is presented in Table 1.

**Table 1 – Summary of Key Proposal Characteristics**

<b>Element</b>	<b>Description</b>
<b>General</b>	
Project life	Approximately 2 – 3 years
Ore deposit	Approximately 12 – 13 Mt high grade ore Approximately 6 Mt low grade ore
Area of new disturbance	Approximately 10 ha clearing of native vegetation
<b>Mine and mining</b>	
Ore type	Pisolite iron ore
Ore location	Above watertable
Stripping ratio	The ratio of waste and low grade ore to high grade ore will be approximately 1:1
Waste rock disposal	Initially directed to surface waste dumps and, thereafter, used in progressive backfilling of mine pits as far as practicable
<b>Product transport</b>	
Product transport	By existing mine access road from Mesa K to Mesa J (4km), then via existing rail infrastructure from Mesa J to Cape Lambert
<b>Infrastructure</b>	
Power	On-site portable generator (diesel powered)
Access roads	Upgrade of existing mine access road from Mesa K to Mesa J.
Other facilities	Transportable office, portable crib room, toilets, septic tank and water tank at Mesa K
<b>Water</b>	
Water use	Water requirements are low and will be limited to the purposes of dust suppression, crib room and ablutions. Water will be supplied from the existing Mesa J operation via trucks and will be stored in on-site water tanks. Potable water will be supplied separately. Supply will be within the current licence limits for Mesa J.

Workforce	
Workforce	Existing Mesa J workforce
Accommodation	Existing accommodation in Pannawonica

**Abbreviations**

Mt million tonnes

Mtpa million tonnes per annum

**Figures (attached):**

Figure 1 – Regional location

Figure 2 – Conceptual Mine Site Layout

Figure 3 - Locations where troglofauna recorded at Mesa K

Figure 4 - Singleton troglofauna locations and associated avoidance areas

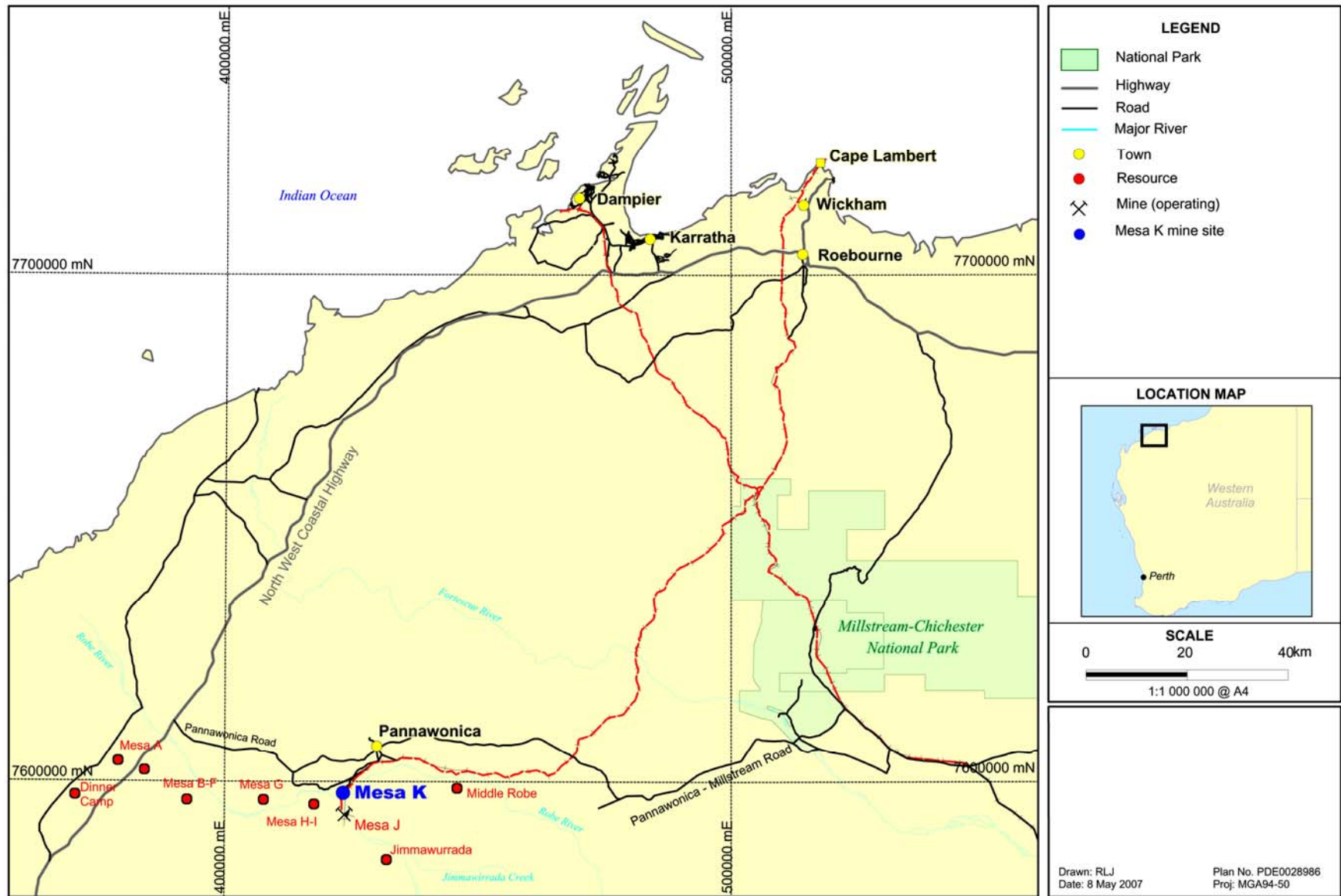
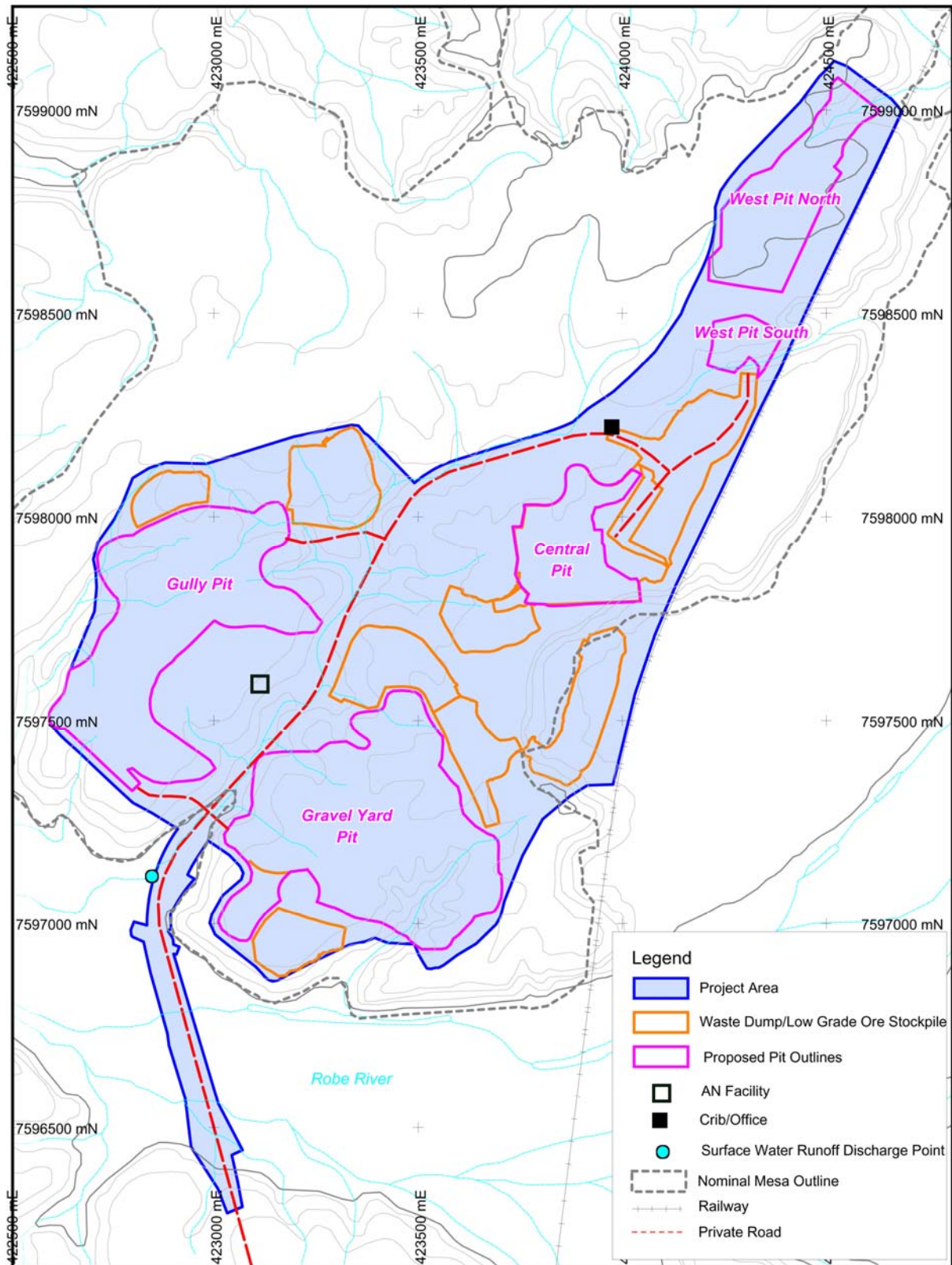


Figure 1: Regional location of Mesa K mine site



**Figure 2: Mesa K conceptual mine site layout**



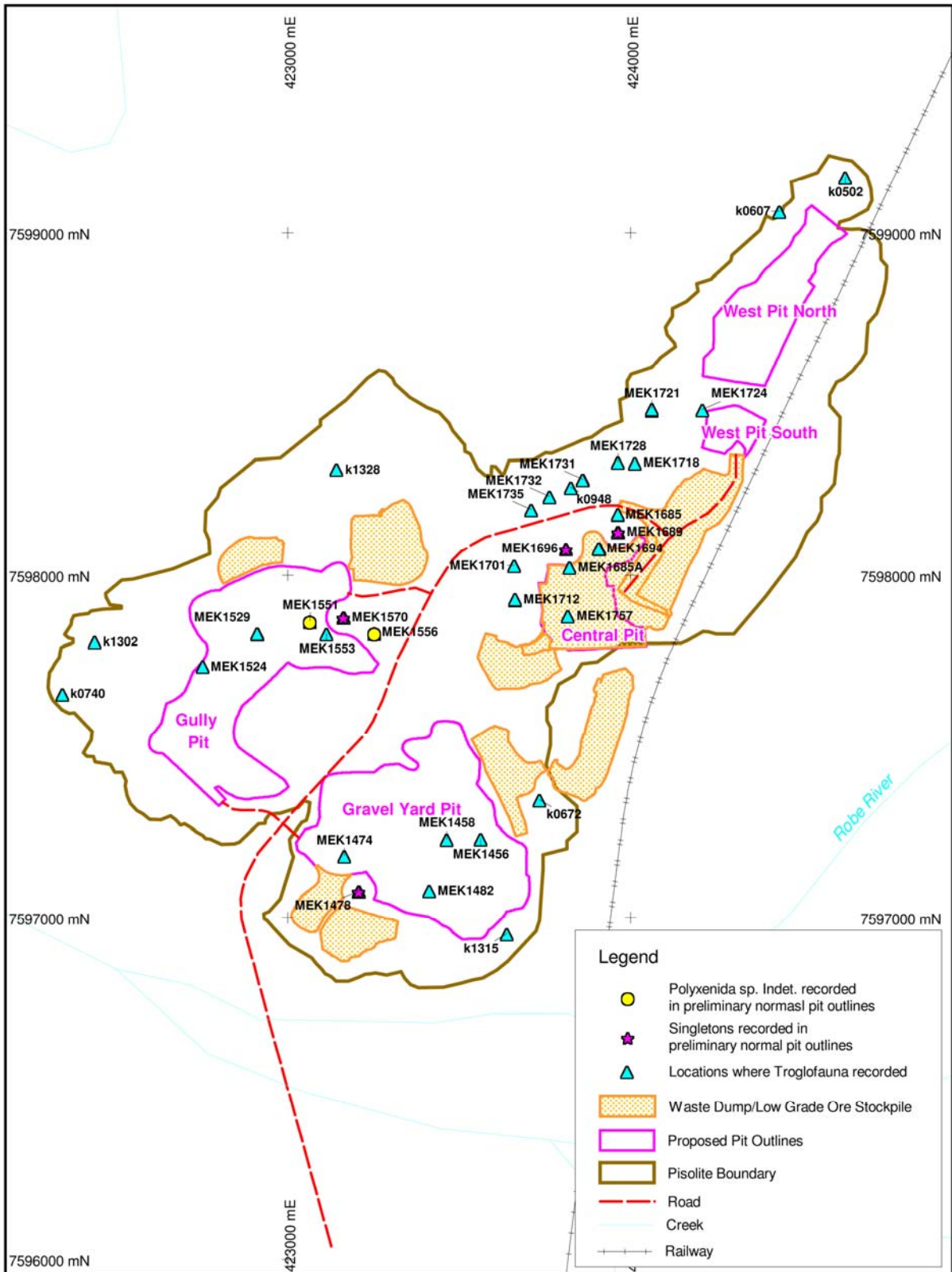


Figure 3: Locations where troglofauna were recorded at Mesa K

## Schedule 2

### The Proposal (Assessment No. 1728)

AMG coordinates for troglofauna avoidance areas

Avoidance Area 1		Avoidance Area 2		Avoidance Area 3		Avoidance Area 4	
Eastings	Northings	Eastings	Northings	Eastings	Northings	Eastings	Northings
423167.1	7597930	423863.3	7598078	424014.9	7598128	423256.4	7597077
423182.6	7597923	423863.2	7598081	424014.9	7598131	423256.3	7597080
423273.6	7597876	423862.9	7598084	424014.6	7598134	423256	7597083
423287.9	7597867	423862.4	7598087	424014.1	7598137	423255.5	7597086
423294	7597859	423861.7	7598090	424013.4	7598140	423254.9	7597089
423300.4	7597846	423860.9	7598093	424012.6	7598143	423254	7597092
423302.7	7597834	423859.8	7598096	424011.5	7598146	423253	7597095
423302.6	7597827	423858.6	7598099	424010.3	7598149	423251.7	7597098
423301.2	7597818	423857.2	7598102	424008.9	7598152	423250.3	7597101
423299.4	7597813	423855.6	7598105	424007.3	7598154	423248.8	7597104
423298.5	7597810	423853.9	7598107	424005.6	7598157	423247	7597106
423296.9	7597807	423852	7598110	424003.7	7598159	423245.2	7597109
423291.2	7597797	423850	7598112	424001.7	7598162	423243.1	7597111
423284.6	7597793	423847.8	7598114	423999.5	7598164	423240.9	7597113
423281.9	7597791	423845.5	7598116	423997.2	7598166	423238.6	7597115
423276.3	7597787	423843	7598118	423994.7	7598168	423236.2	7597117
423268.3	7597784	423840.5	7598120	423992.2	7598170	423233.6	7597119
423264.1	7597782	423837.8	7598122	423989.5	7598171	423231	7597121
423258.3	7597781	423835.1	7598123	423986.8	7598173	423228.2	7597122
423233.1	7597782	423832.2	7598124	423983.9	7598174	423225.4	7597123
423209.9	7597804	423829.3	7598125	423981	7598175	423222.5	7597124
423204.9	7597809	423826.4	7598126	423978	7598176	423219.5	7597125
423193	7597818	423823.3	7598127	423975	7598177	423216.5	7597126
423189.5	7597820	423820.3	7598128	423972	7598177	423213.4	7597127
423177.7	7597825	423817.2	7598128	423968.9	7598178	423210.3	7597127
423172	7597826	423814.1	7598128	423965.8	7598178	423207.2	7597127
423163	7597827	423811	7598128	423962.7	7598178	423204.1	7597127
423152.1	7597828	423807.9	7598128	423959.6	7598177	423201	7597127
423142.9	7597831	423804.8	7598127	423956.5	7598177	423197.9	7597126
423131.7	7597838	423801.7	7598127	423953.4	7598176	423194.9	7597126
423125.3	7597844	423798.7	7598126	423950.4	7598176	423191.9	7597125
423121.3	7597850	423795.8	7598125	423947.5	7598175	423188.9	7597124
423117.7	7597856	423792.9	7598124	423944.6	7598173	423186.1	7597123
423115.3	7597862	423790.1	7598122	423941.8	7598172	423183.3	7597121
423113.9	7597869	423787.4	7598121	423939.1	7598171	423180.6	7597120
423113.4	7597876	423784.8	7598119	423936.5	7598169	423178	7597118
423113.6	7597883	423782.3	7598117	423934	7598167	423175.5	7597116
423117	7597895	423779.9	7598115	423931.6	7598165	423173.1	7597114
423120.9	7597903	423777.7	7598113	423929.4	7598163	423170.8	7597112
423125.6	7597910	423775.6	7598111	423927.3	7598161	423168.7	7597110
423134.6	7597918	423773.6	7598108	423925.3	7598158	423166.8	7597107
423142.2	7597922	423771.8	7598106	423923.5	7598156	423164.9	7597105
423150.1	7597925	423770.2	7598103	423921.8	7598153	423163.3	7597102

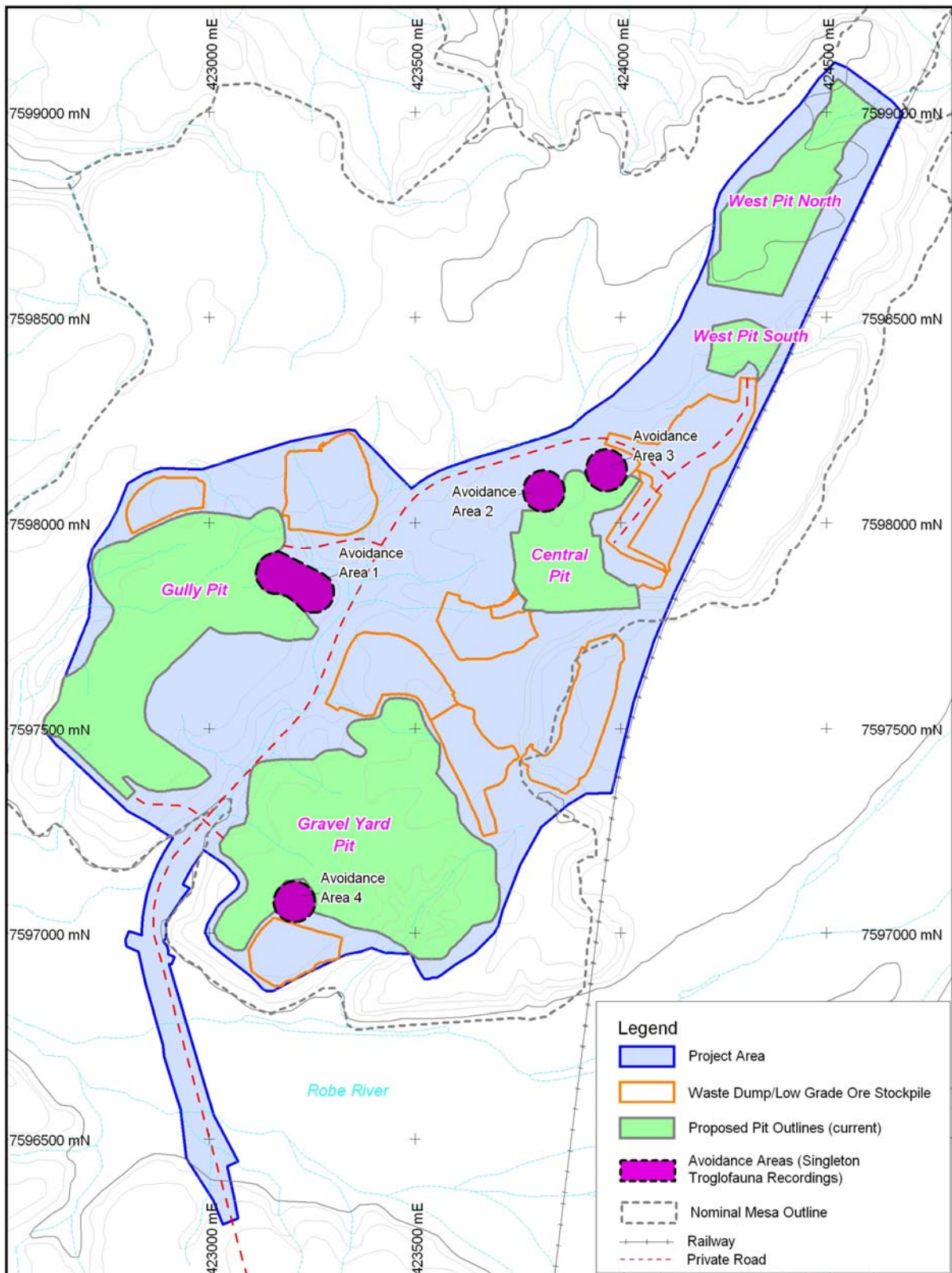
423161.7	7597929
423167.1	7597930

423768.7	7598101
423767.4	7598098
423766.2	7598095
423765.3	7598092
423764.5	7598089
423763.9	7598086
423763.5	7598083
423763.3	7598080
423763.3	7598077
423763.5	7598073
423763.9	7598070
423764.5	7598067
423765.3	7598064
423766.2	7598061
423767.4	7598058
423768.7	7598056
423770.2	7598053
423771.8	7598050
423773.6	7598048
423775.6	7598045
423777.7	7598043
423779.9	7598041
423782.3	7598039
423784.8	7598037
423787.4	7598035
423790.1	7598034
423792.9	7598032
423795.8	7598031
423798.7	7598030
423801.7	7598029
423804.8	7598029
423807.9	7598028
423811	7598028
423814.1	7598028
423817.2	7598028
423820.3	7598029
423823.3	7598029
423826.4	7598030
423829.3	7598031
423832.2	7598032
423835.1	7598033
423837.8	7598035
423840.5	7598036
423843	7598038
423845.5	7598040
423847.8	7598042
423850	7598044
423852	7598047
423853.9	7598049
423855.6	7598052
423857.2	7598054
423858.6	7598057

423920.3	7598150
423919	7598147
423917.9	7598145
423917	7598142
423916.2	7598139
423915.6	7598136
423915.2	7598132
423915	7598129
423915	7598126
423915.2	7598123
423915.6	7598120
423916.2	7598117
423917	7598114
423917.9	7598111
423919	7598108
423920.3	7598105
423921.8	7598103
423923.5	7598100
423925.3	7598097
423927.3	7598095
423929.4	7598093
423931.6	7598091
423934	7598089
423936.5	7598087
423939.1	7598085
423941.8	7598084
423944.6	7598082
423947.5	7598081
423950.4	7598080
423953.4	7598079
423956.5	7598079
423959.6	7598078
423962.7	7598078
423965.8	7598078
423968.9	7598078
423972	7598078
423975	7598079
423978	7598080
423981	7598080
423983.9	7598082
423986.8	7598083
423989.5	7598084
423992.2	7598086
423994.7	7598088
423997.2	7598090
423999.5	7598092
424001.7	7598094
424003.7	7598096
424005.6	7598099
424007.3	7598101
424008.9	7598104
424010.3	7598107

423161.8	7597100
423160.5	7597097
423159.4	7597094
423158.4	7597091
423157.6	7597088
423157.1	7597085
423156.7	7597082
423156.5	7597079
423156.5	7597076
423156.7	7597072
423157.1	7597069
423157.6	7597066
423158.4	7597063
423159.4	7597060
423160.5	7597057
423161.8	7597055
423163.3	7597052
423164.9	7597049
423166.8	7597047
423168.7	7597044
423170.8	7597042
423173.1	7597040
423175.5	7597038
423178	7597036
423180.6	7597034
423183.3	7597033
423186.1	7597031
423188.9	7597030
423191.9	7597029
423194.9	7597028
423197.9	7597028
423201	7597027
423204.1	7597027
423207.2	7597027
423210.3	7597027
423213.4	7597028
423216.5	7597028
423219.5	7597029
423222.5	7597030
423225.4	7597031
423228.2	7597032
423231	7597034
423233.6	7597035
423236.2	7597037
423238.6	7597039
423240.9	7597041
423243.1	7597043
423245.2	7597046
423247	7597048
423248.8	7597051
423250.3	7597053
423251.7	7597056

423859.8	7598060	424011.5	7598110	423253	7597059
423860.9	7598063	424012.6	7598113	423254	7597062
423861.7	7598066	424013.4	7598115	423254.9	7597065
423862.4	7598069	424014.1	7598119	423255.5	7597068
423862.9	7598072	424014.6	7598122	423256	7597071
423863.2	7598075	424014.9	7598125	423256.3	7597074
423863.3	7598078	424014.9	7598128	423256.4	7597077



**Figure 4: Singleton troglofauna locations and associated avoidance areas**

## Attachment 1 to Ministerial Statement 776

Change to proposal under s45C of the *Environmental Protection Act 1986*

---

**Proposal:** Mesa K Remnant Mining Operation

**Proponent:** Rio Tinto Iron Ore Pty Ltd

---

**Change:** Increase in disturbance footprint and amendment of troglofauna mining avoidance areas.

**Key Characteristics Table:** This table replaces Table 1 in Schedule 1

<u>Element</u>	<u>Description of proposal</u>	<u>Description of approved change to proposal</u>
<b>General</b>		
Project life	2-3 years	Removed as not a key characteristic relevant to the environment
Ore deposit	Approximately 12-13 Mt high grade ore Approximately 6 Mt of low grade ore	Removed as not a key characteristic relevant to the environment
Area of new disturbance	Approximately 10 ha clearing of native vegetation	Up to approximately 31 ha clearing of native vegetation within the development envelope
<b>Mine and Mining</b>		
Ore type	Pisolite iron ore	Removed as not a key characteristic relevant to the environment
Ore location	Above watertable	Removed as not a key characteristic relevant to the environment and replaced with 'Mining depth'
Mining depth	Above watertable	Added to replace Ore location element
Stripping ratio	The ratio of waste and low grade ore to high grade ore will be approximately 1:1	Removed as not a key characteristic relevant to the environment
Waste rock	Disposal initially directed to surface waste dumps and, thereafter, used in progressive backfilling of mine pits as far as practicable	Disposal initially directed to surface waste dumps and, thereafter, used in progressive backfilling of mine pits as far as

		practicable
<b>Product transport</b>		
Product transport	By existing mine access road from Mesa K to Mesa J (4km), then via existing rail infrastructure from Mesa J to Cape	<b>Removed as not a key characteristic relevant to the environment</b>
<b>Infrastructure</b>		
Power	On-site portable generator (diesel powered)	<b>Removed as not a key characteristic relevant to the environment</b>
Access roads	Upgrade of existing mine access road from Mesa K to Mesa J.	Upgrade of existing mine access road from Mesa K to Mesa J.
Other facilities	Transportable office, portable crib room, toilets, septic tank and water tank at Mesa K	<b>Removed as not a key characteristic relevant to the environment</b>
<b>Water</b>		
Water use	Water requirements are low and will be limited to the purposes of dust suppression, crib room and ablutions. Water will be supplied from the existing Mesa J operation via trucks and will be stored in on-site water tanks. Potable water will be supplied separately. Supply will be within the current licence limits for Mesa J.	<b>Removed as not a key characteristic relevant to the environment</b>
<b>Workforce</b>		
Workforce	Existing Mesa J workforce	<b>Removed as not a key characteristic relevant to the environment</b>
Accommodation	Existing accommodation in Pannawonica	<b>Removed as not a key characteristic relevant to the environment</b>

Note: Text in **bold** in the Key Characteristics Table, indicates change/s to the proposal.

**List of Replacement Figures and Schedules:**

**Figure 2 – Approved change in disturbance footprint and mine avoidance areas,** replaces ‘Figure 2: Mesa K conceptual mine site layout’ in Schedule 1 and ‘Figure 4 – Singleton troglofauna and associated avoidance areas’ in Schedule 2

**Schedule 2 – Revised GDA coordinates for troglofauna avoidance areas – replaces original table of coordinates in Schedule 2**

---

**Dr Paul Vogel**  
CHAIRMAN  
Environmental Protection Authority  
under delegated authority

Approval date: 25 February 2013



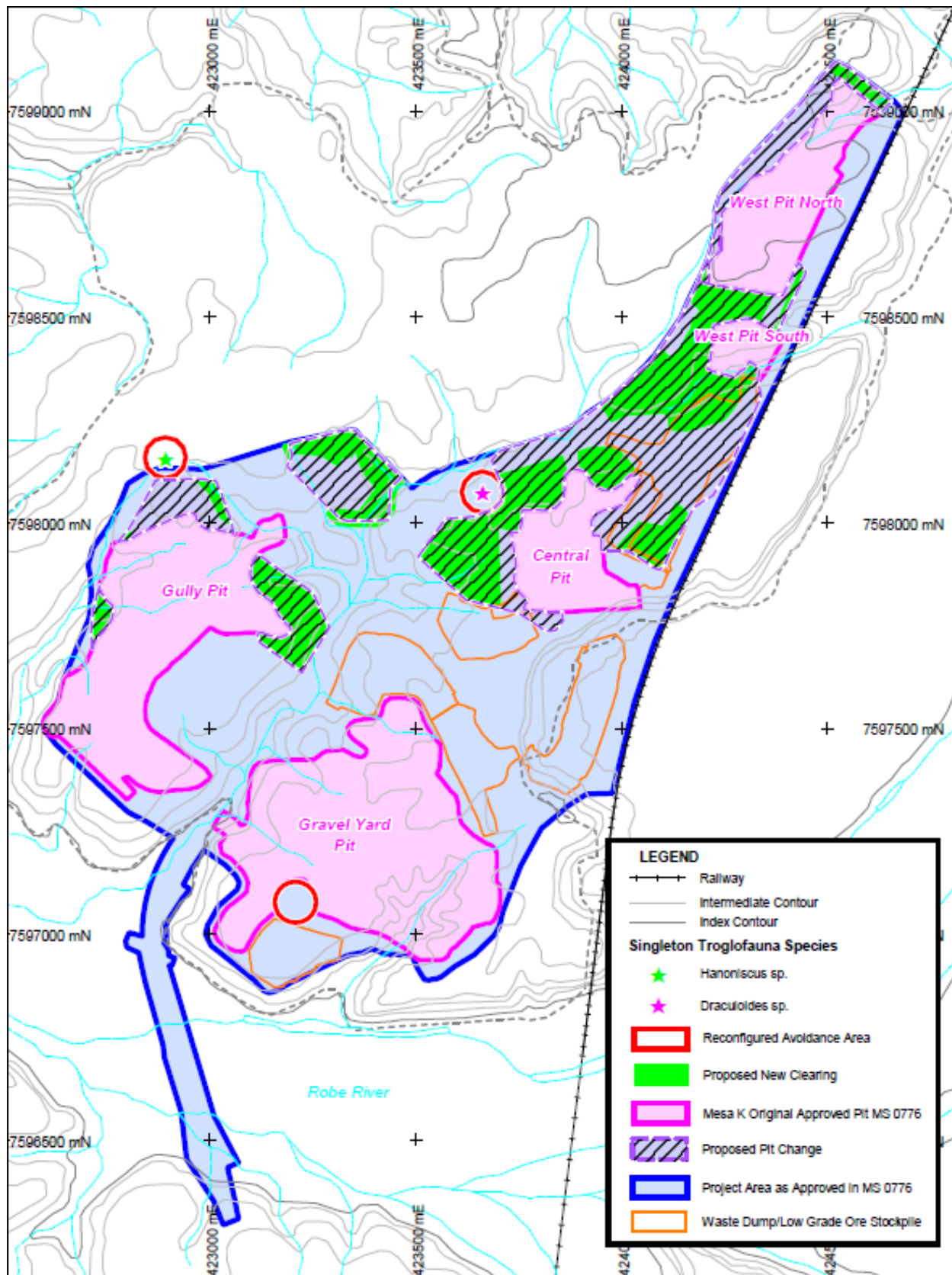


Figure 2 – Approved change in disturbance footprint and mine avoidance areas

## Schedule 2

### The Proposal (Assessment No. 1728)

Coordinates for troglofauna avoidance areas (GDA 94 MGA Z50)

Avoidance Area 1		Avoidance Area 2		Avoidance Area 3	
Easting	Northing	Easting	Northing	Easting	Northing
422892.02	7598208.03	423662.06	7598124.49	423208.02	7597127.98
422898.29	7598207.64	423668.33	7598124.10	423214.29	7597127.59
422904.45	7598206.46	423674.49	7598122.92	423220.45	7597126.41
422910.43	7598204.52	423680.47	7598120.98	423226.43	7597124.47
422916.11	7598201.85	423686.15	7598118.31	423232.11	7597121.80
422921.41	7598198.48	423691.45	7598114.94	423237.41	7597118.43
422926.25	7598194.48	423696.29	7598110.94	423242.25	7597114.43
422930.55	7598189.90	423700.59	7598106.36	423246.55	7597109.85
422934.24	7598184.82	423704.28	7598101.28	423250.24	7597104.77
422937.26	7598179.32	423707.30	7598095.78	423253.26	7597099.27
422939.57	7598173.48	423709.61	7598089.94	423255.57	7597093.43
422941.13	7598167.40	423711.17	7598083.86	423257.13	7597087.35
422941.92	7598161.17	423711.96	7598077.63	423257.92	7597081.12
422941.92	7598154.89	423711.96	7598071.35	423257.92	7597074.84
422941.13	7598148.66	423711.17	7598065.12	423257.13	7597068.61
422939.57	7598142.58	423709.61	7598059.04	423255.57	7597062.53
422937.26	7598136.74	423707.30	7598053.20	423253.26	7597056.69
422934.24	7598131.24	423704.28	7598047.70	423250.24	7597051.19
422930.55	7598126.16	423700.59	7598042.62	423246.55	7597046.11
422926.25	7598121.58	423696.29	7598038.04	423242.25	7597041.53
422921.41	7598117.58	423691.45	7598034.04	423237.41	7597037.53
422916.11	7598114.21	423686.15	7598030.67	423232.11	7597034.16
422910.43	7598111.54	423680.47	7598028.00	423226.43	7597031.49
422904.45	7598109.60	423674.49	7598026.06	423220.45	7597029.55
422898.29	7598108.42	423668.33	7598024.88	423214.29	7597028.37
422892.02	7598108.03	423662.06	7598024.49	423208.02	7597027.98
422885.75	7598108.42	423655.79	7598024.88	423201.75	7597028.37
422879.59	7598109.60	423649.63	7598026.06	423195.59	7597029.55
422873.61	7598111.54	423643.65	7598028.00	423189.61	7597031.49
422867.93	7598114.21	423637.97	7598030.67	423183.93	7597034.16
422862.63	7598117.58	423632.67	7598034.04	423178.63	7597037.53
422857.79	7598121.58	423627.83	7598038.04	423173.79	7597041.53
422853.49	7598126.16	423623.53	7598042.62	423169.49	7597046.11
422849.80	7598131.24	423619.84	7598047.70	423165.80	7597051.19
422846.78	7598136.74	423616.82	7598053.20	423162.78	7597056.69
422844.47	7598142.58	423614.51	7598059.04	423160.47	7597062.53
422842.91	7598148.66	423612.95	7598065.12	423158.91	7597068.61
422842.12	7598154.89	423612.16	7598071.35	423158.12	7597074.84
422842.12	7598161.17	423612.16	7598077.63	423158.12	7597081.12

422842.91	7598167.40
422844.47	7598173.48
422846.78	7598179.32
422849.80	7598184.82
422853.49	7598189.90
422857.79	7598194.48
422862.63	7598198.48
422867.93	7598201.85
422873.61	7598204.52
422879.59	7598206.46
422885.75	7598207.64
422892.02	7598208.03

423612.95	7598083.86
423614.51	7598089.94
423616.82	7598095.78
423619.84	7598101.28
423623.53	7598106.36
423627.83	7598110.94
423632.67	7598114.94
423637.97	7598118.31
423643.65	7598120.98
423649.63	7598122.92
423655.79	7598124.10
423662.06	7598124.49

423158.91	7597087.35
423160.47	7597093.43
423162.78	7597099.27
423165.80	7597104.77
423169.49	7597109.85
423173.79	7597114.43
423178.63	7597118.43
423183.93	7597121.80
423189.61	7597124.47
423195.59	7597126.41
423201.75	7597127.59
423208.02	7597127.98