



WESTERN AUSTRALIA

MINISTER FOR THE ENVIRONMENT

Ass # 936

Bull # 783

State # 391

**STATEMENT TO AMEND CONDITIONS APPLYING TO A PROPOSAL
(PURSUANT TO THE PROVISIONS OF SECTION 46 OF THE
ENVIRONMENTAL PROTECTION ACT 1986)**

PROPOSAL: PORT GEOGRAPHE - STAGE 1 (006/936)
CURRENT PROPONENT: TALLWOOD NOMINEES PTY LTD
CONDITIONS SET ON: 16 JANUARY 1990

The implementation of this proposal is now subject to the following conditions which replace all previous conditions:

1 Proponent Commitments

The proponent has made a number of environmental management commitments in order to protect the environment.

- 1-1 In implementing the proposal, including the documented modifications of March 1995 described in the document "Port Geographe Section 46 Report", the proponent shall fulfil the relevant environmental management commitments made in the Environmental Review and Management Programme (as subsequently revised) and reported on in Environmental Protection Authority Bulletin 386, in documentation on the modifications to the proposal (March 1995), and those made in response to issues raised following public submissions; provided that the commitments are not inconsistent with the conditions or procedures contained in this statement.

A schedule of environmental management commitments to be audited by the Department of Environmental Protection was published in Environmental Protection Authority Bulletin 783 and a copy (as revised on 1 August 1995) is attached.

2 Implementation

Changes to the proposal which are not substantial may be carried out with the approval of the Minister for the Environment.

- 2-1 Subject to these conditions, the manner of detailed implementation of the proposal shall conform in substance with that set out in any designs, specifications, plans or other technical material submitted by the proponent to the Environmental Protection Authority with the proposal.

Published on
11 AUG 1995

2-2 Where, in the course of the detailed implementation referred to in condition 2-1, the proponent seeks to change the designs, specifications, plans or other technical material submitted to the Environmental Protection Authority in any way that the Minister for the Environment determines, on the advice of the Environmental Protection Authority, is not substantial, those changes may be effected.

3 Vasse-Wonnerup Estuary

3-1 The Vasse-Wonnerup Estuary and adjacent Crown land shall be protected and managed for conservation purposes. To achieve this, the following shall be undertaken at times to be determined by, and to the requirements of the Minister for the Environment:

- (1) the application of appropriate mechanisms through the Ministry for Planning and the Shire of Busselton to avoid development (of land areas adjacent to the estuary) which is likely to have a detrimental effect on the estuary;
- (2) the nomination by the Minister for the Environment of the Vasse-Wonnerup System for inclusion under the RAMSAR Convention so as to recognise and acknowledge the waterbird habitat value of the estuary system;
- (3) the development and implementation by the Integrated Catchment Management Coordinating Group of an Integrated Catchment Management Plan which will include practical means of encouraging appropriate management practices on privately owned agricultural land adjacent to the estuary, and within the overall estuary catchment;
- (4) the implementation of an overall Vasse-Wonnerup Conservation Plan prepared and co-ordinated by the Department of Conservation and Land Management in consultation with other appropriate agencies and groups and the proponent;
- (5) further studies of the Vasse-Wonnerup wetland system conducted by the relevant agencies as recommended in the Vasse-Wonnerup Conservation Plan to determine the most appropriate method of management of the waterways and adjacent land areas; and
- (6) the referral of proposals of environmental significance in the locality of the estuary to the Environmental Protection Authority.

4 Foreshore

4-1 Prior to construction of the groynes and establishment of new foreshore beach profiles, the proponent shall provide to the Département of Environmental Protection:

- (1) final design details of their construction with adequate supporting data, to the requirements of the Department of Environmental Protection on advice of the Department of Transport, the Fisheries Department and the Shire of Busselton; and
- (2) a suitable beach monitoring programme with adequate provision for reporting to the Shire of Busselton, the Department of Transport and the Ministry for Planning.

4-2 The proponent shall not cause any long-term loss or erosion of the existing beaches east or west of the foreshore works as a consequence of this project.

4-3 The proponent shall make adequate provision for any possible shoreline restoration as part of the legal agreement to be concluded with the State Government (Department of Transport) and the Shire of Busselton.

5 Sand Trap and Sand Bypass

- 5-1 Prior to construction of the breakwater and harbour entrance, the proponent shall provide to the Department of Environmental Protection final details of the sand trap and sand bypass system, including details of adequate sand budget, timing of the operation, an accurate estimate of costs and details of funding.
- 5-2 Prior to construction of the development area north of Layman Road, the proponent shall prepare a sand dune stabilisation and management programme, to the requirements of the Department of Environmental Protection on advice of the Department of Transport, the Department of Agriculture and the Shire of Busselton.
- 5-3 The proponent shall implement the sand dune stabilisation and management programme required by condition 5-2, to the requirements of the Department of Environmental Protection on advice of the Department of Transport, the Department of Agriculture and the Shire of Busselton.
- 5-4 Prior to construction of the breakwater and harbour entrance, the proponent shall prepare a seagrass wrack management programme, to the requirements of the Department of Environmental Protection on advice of the Department of Transport, the Department of Agriculture and the Shire of Busselton.
- 5-5 The proponent shall implement the seagrass wrack management programme required by condition 5-4, to the requirements of the Department of Environmental Protection on advice of the Department of Transport, the Department of Agriculture and the Shire of Busselton.

6 Sediment Plume Monitoring

- 6-1 Prior to construction, the proponent shall provide details of a sediment plume monitoring and management programme to be undertaken at the time of construction and during subsequent dredging programmes, to monitor the effect on the seagrass meadows and to provide for effective action should a potential problem be detected, to the requirements of the Minister for the Environment on advice of the Department of Environmental Protection, the Department of Transport and the Fisheries Department.

7 Flushing of Canal and Harbour

- 7-1 Within six months following construction of each stage of the canal and harbour development, the proponent shall prepare a programme for an investigation (eg. dye trace or similar) to verify the flushing time and efficiency of water circulation within and from the canal and harbour system, to the requirements of the Department of Environmental Protection on advice of the Department of Transport.
- 7-2 The proponent shall implement the flushing time and efficiency of water circulation programme required by condition 7-1.
- 7-3 If appropriate, the proponent shall ensure adequate flushing through artificial means to the requirements of the Department of Environmental Protection on advice of the Department of Transport.

8 Western Ringtail Possums

- 8-1 Prior to commencement of site works, the proponent shall implement the programme submitted to the Department of Environmental Protection for the protection of the population of Western Ringtail Possums in the project area, to the requirements of the

Minister for the Environment on advice of the Department of Environmental Protection and the Department of Conservation and Land Management.

- 8-2 Prior to commencement of site works, the proponent shall conduct a short term study of the Western Ringtail Possums utilising the project area, to the requirements of the Minister for the Environment on advice of the Department of Environmental Protection and the Department of Conservation and Land Management.
- 8-3 Prior to clearing of the *Agonis flexuosa* woodlands, the proponent shall ensure the capture of as many as possible Western Ringtail Possums occupying the site and their translocation to an approved zoo or other site, under the supervision of the Department of Conservation and Land Management, to the requirements of the Minister for the Environment on advice of the Department of Environmental Protection and the Department of Conservation and Land Management.
- 8-4 Prior to commencement of site works, the proponent shall make provision for contribution to a fund for the maintenance of the captured Western Ringtail Possums, to the requirements of the Minister for the Environment on advice of the Department of Environmental Protection and the Department of Conservation and Land Management.
- 8-5 Prior to commencement of site works, the proponent shall make provision for contribution to a fund for a three year study of the conservation requirements of the local Western Ringtail Possum population with a view to the re-establishment of Western Ringtail Possums in the project area, to the requirements of the Minister for the Environment on advice of the Department of Environmental Protection and the Department of Conservation and Land Management.
- 8-6 Prior to commencement of site works, the proponent shall retain and plant *Agonis flexuosa* as recommended in Environmental Protection Authority Bulletin 386 (Section 5.4), to the requirements of the Minister for the Environment on advice of the Department of Environmental Protection and the Department of Conservation and Land Management.

9 Conservation Area

- 9-1 Prior to construction, the proponent shall revise and implement the layout and landscape treatment of all lands to be included in the conservation area to retain the maximum possible area and range of habitats for waterbirds, to the requirements of the Department of Environmental Protection on advice of the Department of Conservation and Land Management.
- 9-2 Prior to construction, the proponent shall revise and implement the layout and landscape treatment of all lands to be included in the conservation area to provide high waterbird habitat value in all artificial lakes and moats, to the requirements of the Department of Environmental Protection on advice of the Department of Conservation and Land Management.
- 9-3 Prior to construction, the proponent shall revise and implement the layout and landscape treatment of all lands to be included in the conservation area to establish a buffer between the development and the estuary (to be continuous along the Vasse Estuary boundary of the development, and of sufficient height, width and density) to achieve the following:
 - (1) the minimisation of all forms of disturbance to waterbirds;
 - (2) the maintenance of the habitat value of the estuary; and
 - (3) the control of midges and mosquitos,

to the requirements of the Department of Environmental Protection on advice of the Department of Conservation and Land Management.

10 Mosquito and Midge Control

10-1 Mosquito and midge control on the site shall specifically exclude larvicides and be limited to fogging of commercial and residential areas with adulticides. These controls shall be carried out with the concurrence of the Department of Conservation and Land Management, giving consideration to the water level in the lagoon and the suitability of weather conditions, and shall be accompanied by monitoring of the waterbird population to ensure that no detrimental effects are occurring. The controls and monitoring shall be carried out to the requirements of the Department of Conservation and Land Management.

Any other control methods proposed shall be referred to the Environmental Protection Authority.

11 Public Education

11-1 To explain and inform future residents and owners of the purpose and extent of limitations placed on midge and mosquito control, the proponent shall provide to residents a suitable public education package concerning the midge and mosquito control programme, to the requirements of the Department of Environmental Protection on advice of the Department of Conservation and Land Management.

12 Groundwater

12-1 The proponent shall not cause any unacceptable impacts on the groundwater outside the project area as a result of dewatering operations.

12-2 The proponent shall remedy any adverse impacts to the groundwater in the locality to the requirements of the Minister for the Environment on advice of the Department of the Environmental Protection and the Water Authority of Western Australia.

12-3 Prior to and during construction, the proponent shall monitor groundwater quality and levels in and adjacent to the site.

12-4 If any changes in groundwater quality and levels are found, the proponent shall immediately notify the Department of Environmental Protection, the Department of Conservation and Land Management and the Water Authority of Western Australia.

13 Seepage from Canals

13-1 The proponent shall prepare a programme to monitor seepage from the canals.

13-2 The proponent shall implement the programme to monitor seepage from the canals required by condition 13-1.

13-3 The proponent shall regularly report monitoring results of the seepage from the canals to the Department of Environmental Protection.

14 Groundwater Seepage

14-1 In the event of seepage of groundwater in either direction between the estuarine and canal systems resulting in adverse impacts on water quality or quantity of the estuary, the proponent shall undertake to seal by appropriate means as much of the canal waterway system as is considered necessary by the Department of Environmental Protection. Adequate financial provision for such action shall be included in the legal agreement

between the proponent, the State Government (Department of Transport) and the Shire of Busselton.

15 Land Transfers

- 15-1 The land areas to be transferred to the Crown for conservation purposes, including the estuary foreshore east of the development and the area identified in the Environmental Review and Management Programme as 'Reserve for Recreation 190', should be amalgamated into one reserve and gazetted for the purpose of "Conservation of Flora and Fauna" with vesting in the National Parks and Nature Conservation Authority as an A class Reserve.
- 15-2 The Waterfowl Study Centre and its associated site should be gazetted for the purpose of "Waterfowl Study Centre" with vesting in the Executive Director of the Department of Conservation and Land Management.

16 Short and Long-Term Management

- 16-1 Prior to construction of the canal waterways, harbour and entrance breakwaters and groynes, the proponent shall finalise a suitable legal agreement with the State Government (Department of Transport) and the Shire of Busselton, to cover short and long-term waterways management and sand bypassing, to the requirements of the Minister for the Environment on advice of the Department of Transport, the Fisheries Department and the Ministry for Planning.

17 Time Limit on Approval

The environmental approval for the proposal is limited.

- 17-1 If the proponent has not substantially commenced the modified project within two years of the date of this statement, then the approval to implement the proposal shall lapse and be void. The Minister for the Environment shall determine any question as to whether the modified project has been substantially commenced.

Any application to extend the period of two years referred to in this condition shall be made before the expiration of that period, to the Minister for the Environment by way of a request for a change in the condition under Section 46 of the Environmental Protection Act. (On expiration of the two year period, further consideration of the proposal can only occur following a new referral to the Environmental Protection Authority).

18 Proponent

These conditions legally apply to the nominated proponent.

- 18-1 No transfer of ownership, control or management of the project which would give rise to a need for the replacement of the proponent shall take place until the Minister for the Environment has advised the proponent that approval has been given for the nomination of a replacement proponent. Any request for the exercise of that power of the Minister shall be accompanied by a copy of this statement endorsed with an undertaking by the proposed replacement proponent to carry out the project in accordance with the conditions and procedures set out in the statement.

19 Compliance Auditing

To help determine environmental performance, periodic reports on progress in implementation of the proposal are required.

- 19-1 The proponent shall submit periodic Progress and Compliance Reports, in accordance with an audit programme prepared by the Department of Environmental Protection in consultation with the proponent.

Procedure

- 1 Unless otherwise specified, the Department of Environmental Protection is responsible for assessing compliance with the conditions contained in this statement and for issuing formal clearance of conditions.
- 2 Where compliance with any condition is in dispute, the matter will be determined by the Minister for the Environment.

Peter Foss, MLC
MINISTER FOR THE ENVIRONMENT

09 AUG 1995

**Schedule of Proponent's Environmental Management
Commitments**

which will be audited

by the Department of Environmental Protection

1 August 1995

**PORT GEOGRAPHE - STAGE 1
(006/936)**

TALLWOOD NOMINEES PTY LTD

During Construction

1 Salinity of Estuary Water

- 1.1 The salinity of estuary water at a number of selected sites will be monitored both prior to, during and subsequent to completion of construction of the waterways to confirm that the waterways have not contaminated the freshwater resource utilised by the waterfowl.
- 1.2 Loss of water to the estuary could occur only if a hydraulic connection is found to exist between the development and the estuary. This situation is covered by the proponent's commitment to construct an impermeable seal between the development and the estuary should a hydraulic connection be detected in the course of proposed monitoring.

2 Groundwater Quality and Levels in Coastal Dunes

A series of piezometers will be installed at selected locations emanating away from the development and extending into nearby residential areas. These bores will be used to monitor the effects of the dewatering operation and provide warning to construction management of potential inconvenience to domestic users of the resource.

3 Water Quality in the Harbour and Waterways

- 3.1 Water quality in the harbour and waterways will be monitored at selected sites on a semi annual basis during the first four years of operation and on a quarterly basis on the fifth year.

The parameters to be monitored will include:

- 1 aesthetics (by visual observation);
- 2 salinity (throughout water column to check for stratification);
- 3 dissolved oxygen (surface and 0.5m from bottom of waterways);
- 4 total suspended solids (midway between top and bottom of water);
- 5 total nitrogen (midway between top and bottom of water);
- 6 total phosphorus (midway between top and bottom of water); and
- 7 chlorophyll 'a' (midway between top and bottom of water).

- 3.2 In addition bacterial levels will be monitored five times over a 30 day period during the summer holiday period each year.

4 Sediment Quality in the Harbour

- 4.1 Contamination of the sediments by antifouling metals will be monitored once during the first year of operation and subsequently in year three and year five to determine whether or not metal accumulation is occurring.
- 4.2 Nutrient concentrations will also be monitored at the same frequency to determine if accumulation of nutrients is taking place.

5 Metals in Harbour Biota

Concentration of antifouling metals in filter feeder organisms (mussels) within the harbour will be monitored at the same frequency as for sediments.

6 Annual Report

An annual report containing the results of each years monitoring programme will be submitted to the EPA and other State Government agencies as specified.

7 Dewatering Stilling Basins

Notwithstanding the available evidence that the impact of construction would have negligible impact, the proponent has undertaken to discharge dewatering liquids into stilling basins if necessary to settle out any silt before the water is discharged to the ocean.

8 Beach Nourishment

During the construction period the proponent will place sufficient volumes of sand from the development site to the east of the development to ensure that no scouring of the adjacent coastline occurs in the period before sand bypassing is undertaken.

9-1 Foredune Stabilisation

Following reconstruction of the beaches in front of the development site, the reconstituted foredune will be established with plant species appropriate for the coast and similar to species occurring in adjacent areas of coastline. Brush matting may be required for a period until the plants establish themselves. Public access to these areas will be restricted by appropriately located fencing.

9-2 Public Access and Foreshore Reserve

Public access will also be provided to the breakwaters and groynes for sightseeing and fishing.

10 Coastal Stability

10.1 Subsequent to completion of beach nourishment works, a series of transects normal to the beach will be established to monitor beach profiles and sediment volumes accumulated or lost. The transects will be established in front of the development site and extend for 0.5km on either side. Monitoring surveys will be undertaken on a semi annual basis toward the end of summer and the end of winter every year.

10.2 Additional monitoring will be conducted after significant storm events.

11 Securing Conservation and Education Values

The conservation value will be secured by:

- 1 donation of prime waterfowl habitat to the State for reservation as a Waterfowl Conservation Area;

- 2 provision of additional drought refuge areas and source of fresh water;
- 3 construction of a channel to form a conservation island; and
- 4 construction and donation to the State of a waterfowl study centre.

12 Minimising Disturbance to Waterfowl

Disturbance to the waterfowl will be minimised by:

- 1 removing all stock animals and horses from the land donated as reserve;
- 2 providing a buffer zone of 50m width between the development and the landward edge of the wetlands fringing the edge of the estuary;
- 3 constructing a dog proof 1.5m high wire link fence around the border of the Waterfowl Conservation Area and the development. The fence will basically be constructed along the southern border of the development;
- 4 providing appropriate landscaping and revegetation of the estuary edge of the development;
- 5 controlling public access to the Waterfowl Conservation Area via defined pathways and viewing areas;
- 6 The development / conservation reserve boundary will be a carefully designed interface meeting the following criteria:
 - (1) A dual use path bordering the development of the Vasse Estuary landscape along most of its length.
 - (2) An alignment which, together with its edge treatment, minimises the noise and light intrusion into the estuary environment;
 - (3) A construction standard which ensures that all surface runoff from the urban development and the road and dual use path will be entrapped as far as possible on site.
 - (4) Bunding, landscaping and fencing along the estuary edge will be sufficient to deter human and prevent animal access into the Vasse Estuary system.

The proponent accepts CALM's requests for:

- 7 A vegetated buffer zone between the development and the estuary.
- 8 The orientation of all public lighting to north away from the estuary.
- 9 The use of adulticides to control nuisance level of insects as necessary and as currently practised by the Busselton Shire Council.

13 Waterfowl Study Centre

The proponent is happy to accept that:

- 1 The area adjacent to the Study Centre will be developed so that it satisfies CALM's reasonable requirements;
- 2 Final siting, design, operations etc will be assessed in conjunction with CALM; and
- 3 The amount of money spent on the Study Centre and Support Facilities can be at a greater level than \$100, 000 if the development is programmed further in to the project. This programming would result in a better facility being established and one which would more quickly be self-supporting and a revenue earner.

14 Western Ringtail Possums

The proponent will work with CALM, local groups, museums and wildlife parks to arrive at the best solution and timing of action to ensure the safety of ringtailed possums in the Development area.

15 Estuary Research

The proponent will contribute \$40,000 per year for two years of estuary research.

16 Project Agreements

Deeds of Agreement have been finalised between the State (Department of Transport), the Busselton Shire and the proponent to cover waterways management and sand bypassing.

Commitments made in the Deeds are:

- 1 the proponent accepts total responsibility for waterways management and sand bypassing for a period of five years subsequent to completion of construction of Stage 3;
- 2 revenue created from within the project will be paid into a trust fund (or similar) to pay for waterways management and sand bypassing after the five year period; and
- 3 the proponent will provide a bank guarantee in support of the trust fund until such time that the fund has reached its operating minimum level.

After Construction

17 Reporting

A final report presenting the results and an analysis of all monitoring undertaken will be submitted to the EPA and other State Government agencies as specified in the agreement before the hand over of management responsibility to the State.

Attachment to Statement 391

Change to Description of Proposal as detailed within the
Environmental Monitoring and Management Programme (EMMP)
for the Port Geographe development

Proposal: Port Geographe

Proponent: Tallwood Nominees Pty Ltd

Change: Modifications to Beach Alignments at Wonnerup Beach
Changes to Ministerial Statement not required

From:

Element	Quantities/Description
4-1 Foreshore	Figure 3.2 “Port Geographe: Sand Bypassing Pre and Post Nourishment Sand Deposit Zone” (Riedel and Byrne, October 1990). Sourced from the “Port Geographe Environmental Monitoring and Management Programme” (LeProvost Environmental Consultants, 21 December 1990)

To:

Element	Quantities/Description
4-1 Foreshore	Drawing MJP-1235-7-1 Revision C “Port Geographe Coastal Management Study 2005 Wonnerup Beach Profile Monitoring MSL Shoreline Management Limits Actual Shoreline Movements at MSL” (MJ Paul and Associates, February 2006). Sourced from “Port Geographe Marina Development Proposed Amendments to Coastal Management Aspects of the Project’s Approved Environmental Monitoring And Management Program” (MJ Paul and Associates, March 2006)
	Monitoring (pre and post-construction) and management to be in accordance with requirements outlined within the “Port Geographe Environmental Monitoring and Management Programme” (Le Provost Environmental Consultants, 21 December 1990) and “Port Geographe Four-Year Works Programme” (Cardno BSD, April 2006)

Approval Date: 19/9/06

Attachment 2 to Statement 391

Change to Proposal

Proposal: Port Geographe – Stage 1

Proponent: Tallwood Nominees Pty Ltd.

Change: To harvest wrack for a two (2) year trial period between Guerin Street groyne and the western breakwater of the Port Geographe development.

Features of approved Proposal:

Component	Quantities/Description
Seagrass/Wrack on beach	Deposited seagrass/wrack to remain on beach and return offshore naturally through tidal and wave action. Where large amounts of wrack are not readily dispersed and the accumulation is excessive or results in a greater than normal nuisance, or banks of seagrass have remained when other beaches have cleared up then the wrack will be removed with the aid of front-end loaders and tip-tray trucks.

Features of approved change to Proposal:

Component	Quantities/Description
Seagrass/Wrack harvesting trial.	Trial harvest and removal for two years as described in amended Seagrass Wrack Management Program. <ul style="list-style-type: none">• Area to be harvested is less than 1 km of coastline from the western breakwater of Port Geographe to the Guerin Street groyne.• 75% of deposited wrack to be harvested (25% to remain on beach)

Dr Paul Vogel
CHAIRMAN
Environmental Protection Authority
under delegated authority

Approval date:

15-5-09

Attachment 3 to Ministerial Statement 391

Change to proposal under s45C of the *Environmental Protection Act 1986*

Proposal: Port Geographe – Stage 1

Proponent: Tallwood Nominees Pty Ltd and the Minister for Transport

Change: To define the spatial components of the Port Geographe Development, identifying the Land Development Component and the Coastal Structures Component.

List of Replacement Figures and Schedules:

Figure 1: Port Geographe Components

Dr Paul Vogel
CHAIRMAN
Environmental Protection Authority
under delegated authority

Approval date: 5 February 2013



Figure 1: Port Geographe Components

Proposal: Port Geographe – Stage 1

Proponent: Tallwood Nominees Pty Ltd and the Minister for Transport

Change: Delete Figure 1 and replace with a revised Figure 1 (Mar 2013).

Provide a conceptual layout of coastal structures (Figure 2).

Provide the key characteristics of the proposal (Table 1).

List of Replacement Figures and Tables:

Figure 1 (Mar 2013): Port Geographe Components

Figure 2: Port Geographe Coastal Structures (Conceptual Layout)

Table 1: Key Characteristics

Table 1: Key Characteristics

Element	Description of proposal
Location	Geographe Bay, East of Busselton
Infrastructure	Coastal structures including: - Western training wall , and - Eastern seawall
Materials	Rock and rock armour
Materials transport	Road
Channel dimensions	Max depth: -2.8m Chart Datum
Excavation works	Approximately 15,000 cubic metres of dredge spoil to beach or offshore disposal area.
Area of seabed disturbance	Conceptual outline Figure 2.

Dr Paul Vogel
CHAIRMAN
Environmental Protection Authority
under delegated authority

Approval date: 12 April 2013



Figure 1 (Mar 2013): Port Geographe Components

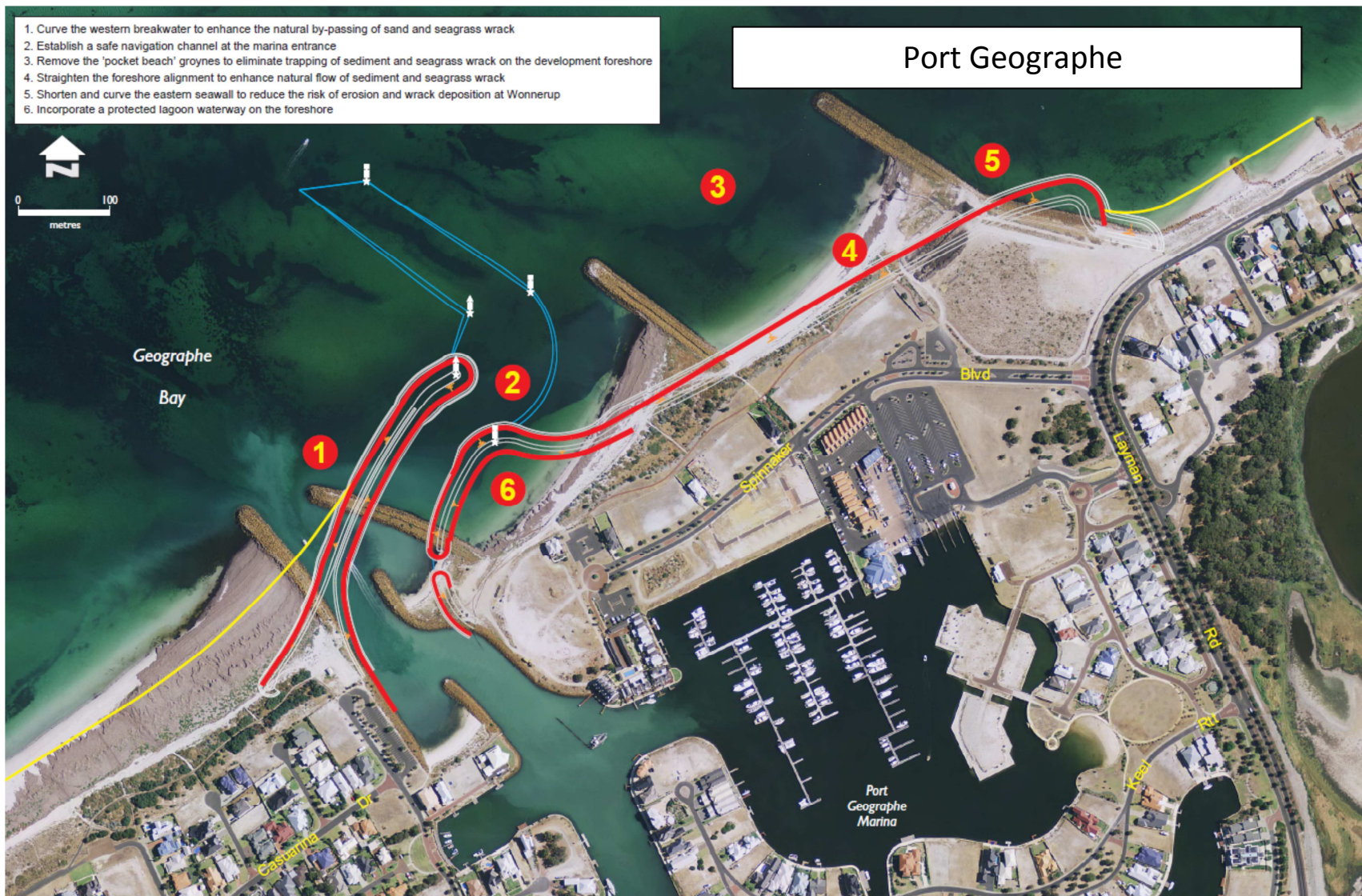


Figure 2: Port Geographe Coastal Structures (Conceptual Layout)

Attachment 5 to Ministerial Statement 391

Change to proposal under s45C of the *Environmental Protection Act 1986*

Proposal: Port Geographe – Stage 1

Proponents: Tallwood Nominees Pty Ltd and the Minister for Transport

Change: Amendment to the channel dimensions and excavation works in the Key Characteristics Table

Table 1: Key Characteristics Table

Element	Description of proposal	Description of change to proposal
Location	Geographe Bay, East of Busselton	Geographe Bay, East of Busselton
Infrastructure	Coastal structures including: - Western training wall , and - Eastern seawall	Coastal structures including: - Western training wall , and - Eastern seawall
Materials	Rock and rock armour	Rock and rock armour
Materials transport	Road	Road
Channel dimensions	Channel location in Figure 1. Channel detailed in Figure 2. Max channel depth: -2.8m Chart Datum	Channel location in Figure 1. Channel detailed in Figure 2. Design depth: -2.8m Chart Datum (to a maximum -3.3m Chart Datum with over dredge
Excavation works	Approximately 15,000 cubic metres of dredge spoil to beach or offshore disposal area.	Capital dredge material transferred to beach and/or offshore disposal area.
Area of seabed disturbance	Detailed in Figure 2.	Detailed in Figure 2.

Dr Paul Vogel
CHAIRMAN
Environmental Protection Authority
under delegated authority

Approval date: 13 September 2013