

Proposal Content Document

Table 1: General proposal content description

Proposal title	Kemerton Strategic Industrial Area Strategic Proposal
Proponent name	DevelopmentWA
Short description	<p>The Proponent is seeking to develop the Kemerton Strategic Industrial Area (KSIA) for the purpose of industrial and infrastructure development as a Strategic Proposal. The KSIA is located within the Shire of Harvey, 17 km north of Bunbury in the southwest of Western Australia (Figure 1). Originally established in 1985, the KSIA is approximately 7,510 ha in size, consisting of an Industry Core ('Core' 2,012 ha in size), and a surrounding Buffer (5,498 ha in size).</p> <p>A range of land uses, and landowners currently exist within the KSIA. Some current land uses will continue, with the potential for future activities including but not limited to:</p> <ul style="list-style-type: none"> - Basic raw materials extraction (sand) - Noxious/heavy industry - Light and general industry - Renewable energy developments - Infrastructure - Telecommunications - Conservation <p>The Strategic Proposal is to develop the Core over an approximate 50-year time period while providing protection for the Buffer, the majority of which is likely to be managed by the Department of Biodiversity, Conservation and Attractions in the future.</p>

Table 2: Proposal content elements

Proposal elements	Location / description	Maximum extent, capacity or range
Physical elements		
Land development within the Core	Core (Figure 1)	Clearing of no more than 920 ha within the 2,012 ha Core to facilitate future industrial development.
Infrastructure within the Buffer	Buffer (Figure 1)	Clearing of no more than 530 ha of native vegetation within the 5,498 ha Buffer to facilitate installation/upgrades of infrastructure servicing the Core, limited basic raw materials extraction (sand) for fill requirements in the Core, and implementation of conservation activities.
Construction elements		
Clearing of native vegetation	Within the KSIA Strategic Proposal Area (Figure 1)	A total native vegetation clearing maximum of up to 1,450 ha is proposed within the KSIA Strategic Proposal Area for ongoing construction of industrial facilities and associated infrastructure.

Operational elements		
Dewatering/groundwater abstraction/dewater management	Within the KSIA Strategic Proposal Area (Figure 1)	The maximum extent of dewatering/groundwater abstraction required to support development within the Core will be determined as part of more detailed water management studies and planning.
Air emissions	Within the KSIA Strategic Proposal Area (Figure 1)	Airshed analysis and air quality modelling will confirm the anticipated maximum extent of emissions and thresholds to be established, including for sulphur dioxide and nitrogen dioxide.
Noise emissions	Within the KSIA Strategic Proposal Area (Figure 1)	Noise emissions will be in accordance with the <i>Environmental Protection (Noise) Regulations 1997</i> and maximum thresholds will be determined during the assessment process.
Waste discharges	Within the KSIA Strategic Proposal Area (Figure 1)	Potential type of future wastes will be identified during the assessment process.
Rehabilitation		
Rehabilitation for environmental offsetting purposes	Within the KSIA Strategic Proposal Area (Figure 1)	Rehabilitation potential will be identified as a means of offsetting significant residual environmental impacts where appropriate.
Commissioning		
N/A		
Decommissioning		
N/A		
Other elements which affect extent of effects on the environment		
Proposal time	Maximum project life	There is an approximate 50-year time period proposed for development.
	Construction phase	To be undertaken as per approved Derived Proposal timeline.
	Operations phase	
	Decommissioning phase	

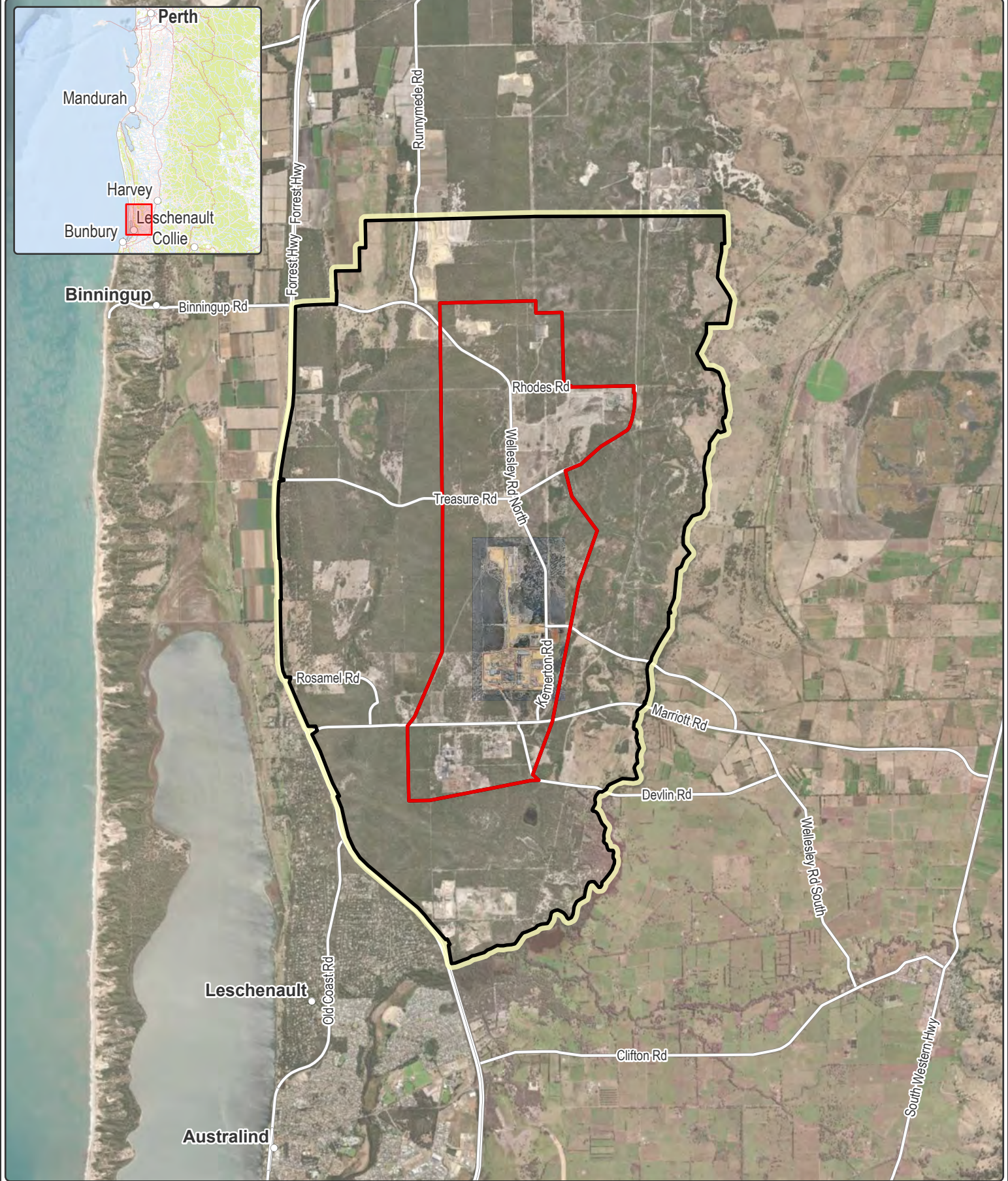


Figure 1: KSIA Strategic Proposal Area

- Kemerton Strategic Proposal Area
- Core
- Buffer
- Major Road



Datum/Projection:
GDA 1994 MGA Zone 50
22PER1466-JP Date: 24/01/2024