

**NOTICE OF SECTION 38E DECLARATION
THAT PROPOSAL IS A DERIVED PROPOSAL
(Section 38E of the *Environmental Protection Act 1986*)**

Strategic proposal: Pilbara Expansion Strategic Proposal

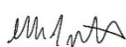
Strategic proposal statement: Ministerial Statement 1105 published on 11 July 2019

The Environmental Protection Authority (EPA) at its meeting 1180 dated 17 August 2023, declared the Orebody 32 Below Water Table proposal to be a derived proposal in accordance with section 38E of the *Environmental Protection Act 1986*. I have today as Chair of the EPA, given written notice of the EPA's declaration to the Minister for Environment pursuant to section 38E(6) of the Act.



Prof. Matthew Tonts
CHAIR

24 August 2023




**Ms Lee
McIntosh**
DEPUTY
CHAIR

28 August
2023



Mr Hamish Beck
MEMBER

24 August 2023



**Dr Jennifer
Pope**
MEMBER

25 August 2023

Schedule 1 – Description of derived proposal

Derived proposal: Orebody 32 Below Water Table

Proponent: BHP Iron Ore Pty Ltd

Proponent address: 125 St Georges Terrace, PERTH WA 6000

Description of the derived proposal: As detailed in the Table 1 and Figures 1 and 2 attached to this Notice.

Table 1: Element, Location and Extent of the proposal.

Element	Location	Description of limits/extents
<i>Physical elements</i>		
Expansion of existing mining at Newman Hub - Orebody 32 deposit, Eastern Ridge, to below the water table and associated infrastructure and activities	Figure 1 and Figure 2	No clearing (0 hectares (ha)) of native vegetation within the existing Orebody 32 mine development envelope of 933 ha
Surplus water discharge and associated infrastructure and activities	Figure 1	Clearing of up to 224 ha of native vegetation within the pipeline corridor area of the 933 ha development envelope (to be undertaken within the 98,500 ha clearing limit of Ministerial Statement 1105)
<i>Operational elements</i>		
Dewatering and water supply	-	Dewatering and abstraction of up to 25.7 gigalitres per annum
Management of surplus water	Figure 1	Controlled discharge of up to 21.9 gigalitres per annum to Ophthalmia Dam.
Pit lake	Figure 1	Open void and formation of pit lake within Orebody 32 mine pit
Carbon dioxide equivalent (CO ₂ -e) emissions	-	1.13 million tonnes CO ₂ -e over the life of proposal
<i>Timing elements</i>		
Operational life of proposal	-	30 years



Figure 1: Location of the Orebody 32 Below Water Table proposal.

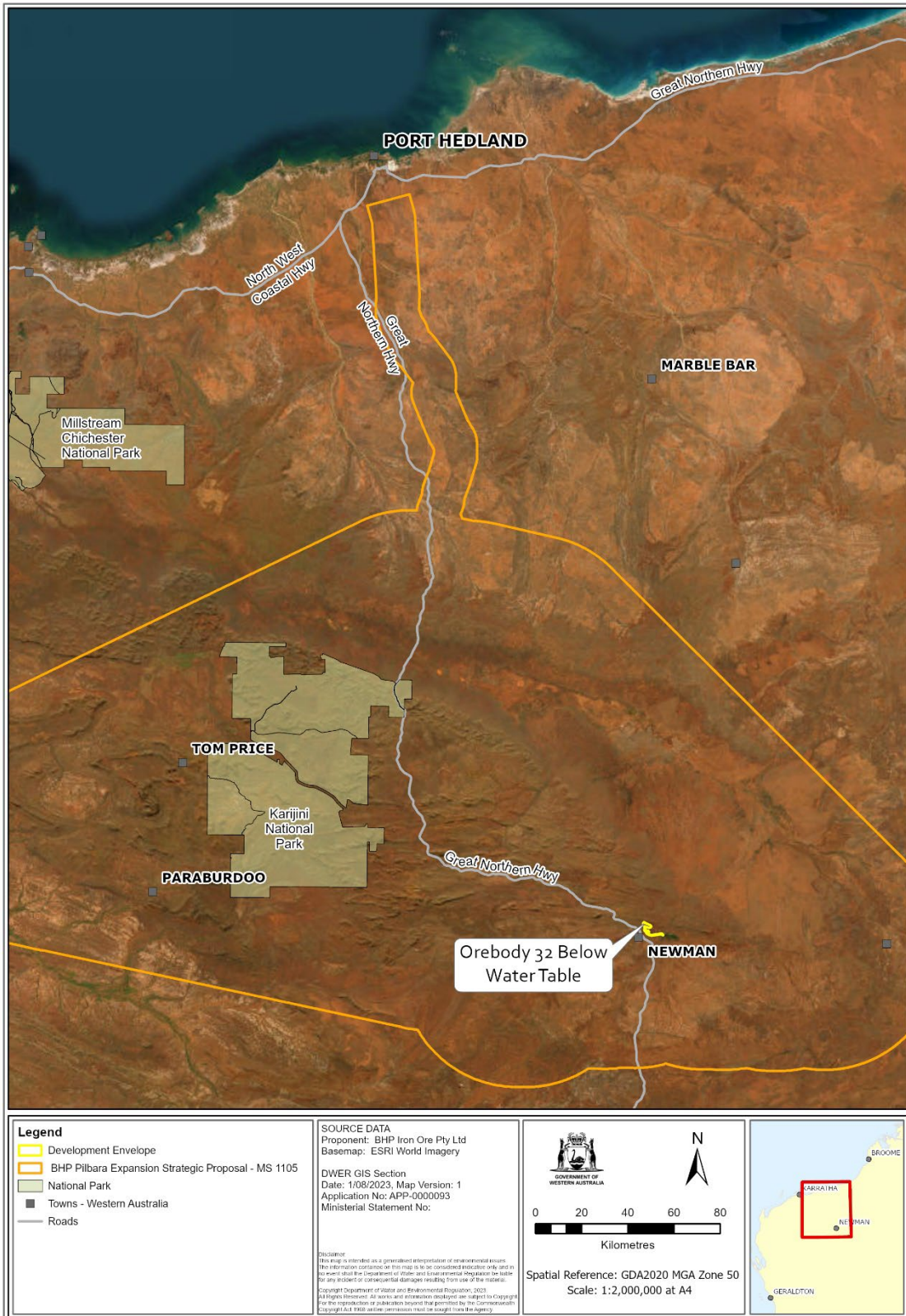


Figure 2: Derived proposal location within the Pilbara Expansion Strategic Proposal.