

Cloudbreak Iron Ore Mine

Proposal Content Document

Table 1: General proposal content description

	Existing Project	Proposed Change
Proposal title	Cloudbreak Life of Mine	No change
Proponent name	Fortescue Metals Group Limited	No change
Short description	<p>The proposal includes the existing mine and the proposed expansion. The existing mine includes open pit strip mining, backfilling of pits, progressive rehabilitation and ore processing.</p> <p>The expansion includes increasing ore production, development of new pits and waste dumps, the development of new infrastructure and additional dewatering and water disposal activities over the life of mine.</p> <p>The expansion also involves an upgrade of the ore processing facility to include a “wet-front end” and ore washing plant, and in-pit disposal of tailings resulting from the wet processing (beneficiation) of ore.</p> <p>The main components of the proposal are:</p> <ul style="list-style-type: none">• additional mine pits and depth of mining;• permanent waste landforms;• in-pit tailings disposal;• an overland ore conveyor;• upgrading the ore processing facility to include a “wet-front end” and wash plant;• additional groundwater abstraction bores;• fresh, saline and brackish groundwater reinjection bores;• roads;• drainage;• sewage;	No change

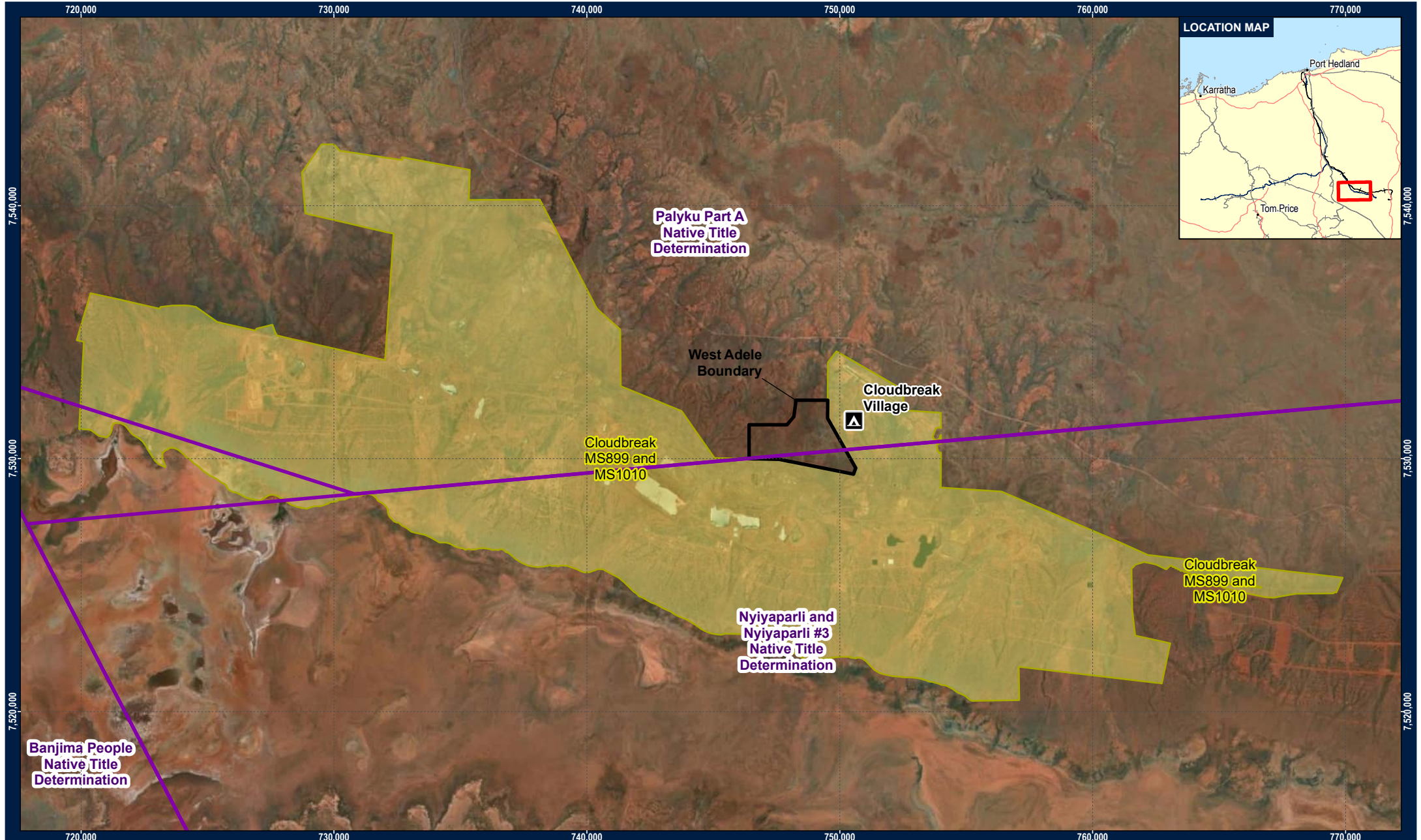
	<ul style="list-style-type: none"> possible reverse osmosis water treatment plant; and increased accommodation footprint 	
--	--	--

Table 2: Proposal content elements





Proposal element	Location / description	Existing maximum extent, capacity or range	Proposed maximum extent, capacity or range
Physical elements			
Location	Figure 1	Cloudbreak (approximately 100 km NNW of Newman)	No change
Area Disturbed	Figure 1	Up to 13, 633 ha within a 37,688 ha Project Area, where 5,500 ha applies to Existing Mine and 8,133 ha applies to Expansion.	Up to 13,882.19 ha within a 38,399 ha Project Area, where 5,500 ha applies to Existing Mine and 8,382.19 ha applies to Expansion.
Operational elements			
Tailings Disposal	Figure 1	Deposition of tailings both below and above the watertable.	No change
Dewatering	Figure 1	Groundwater abstraction up to 175 GL/a	No change
Surplus dewater management	Figure 1	Groundwater reinjection up to 175 GL/annum	No change
Temporary Presence of water in Mining Pits	Figure 1	Temporary presence of water in inactive mining pits during mine operations. Water in inactive mining pits to be removed after the cessation of mining operations and backfilled to a level which will not allow the	No change

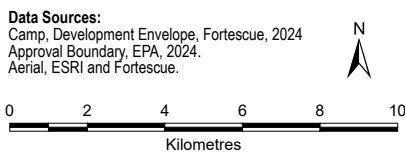
		formation of permanent pit lakes.	
Proposal elements with greenhouse gas emissions			
Construction elements:			
Scope 1	N/A		No change
Scope 2	N/A		No change
Operation elements:			
Scope 1	N/A		No change
Scope 2	N/A		No change
Rehabilitation			
N/A			No change
Commissioning			
N/A			No change
Decommissioning			
N/A			No change
Other elements which affect extent of effects on the environment			
Proposal time*	Maximum project life	N/A	No change
	Construction phase	N/A	No change
	Operations phase	N/A	No change
	Decommissioning phase	N/A	No change

* Proponents should only provide realistic timeframes to avoid unnecessary change to proposal applications at referral (section 38C), assessment (section 43A) or post assessment (section 45C).




LEGEND

-  Camp
-  Proposed Amendment Area
-  Existing Approval Boundary (MS899 and MS1010)
-  Native Title Determination



Requested By: J. Abery
 Drawn By: S. Law
 Revised By: scostello
 Approved By:
 Scale: 1:195,000
 Coordinate System: GDA 1994 MGA Zone 50
 Document Name: CB_MP_EN_0467_013_r3

Date: 23/01/2025
 Size: A4L
 Revision: 3
 Confidentiality: No



MS899 and MS1010 and Proposed Boundary West Adele
Figure 1



Fortescue accepts no liability and gives no representation or warranty, express or implied, as to the information provided including its accuracy, completeness, merchantability or fitness for purpose. All information provided is to be used in accordance with any relevant Licence Agreements, Terms and Conditions and all applicable laws.