

THIS DOCUMENT

This document has been produced by the Office of the Appeals Convenor as an electronic version of the original Statement for the proposal listed below as signed by the Minister and held by this Office. Whilst every effort is made to ensure its accuracy, no warranty is given as to the accuracy or completeness of this document.

The State of Western Australia and its agents and employees disclaim liability, whether in negligence or otherwise, for any loss or damage resulting from reliance on the accuracy or completeness of this document.

Copyright in this document is reserved to the Crown in right of the State of Western Australia. Reproduction except in accordance with copyright law is prohibited.

Published on: 4 March 2015

Statement No: 997

**STATEMENT THAT A PROPOSAL MAY BE IMPLEMENTED
(PURSUANT TO THE PROVISIONS OF THE
ENVIRONMENTAL PROTECTION ACT 1986)**

Kintyre Uranium Project

Proposal: The proposal is to construct and operate an open-cut uranium mine, and associated infrastructure, approximately 270 kilometres (km) north east of Newman.

Proponent: Cameco Australia Pty Ltd
ACN 001 513 088

Proponent Address: 24 Hasler Road
Osborne Park WA 6017

Assessment Number: 1845

Report of the Environmental Protection Authority Number: 1522

Appeal numbers: 136-152 of 2014

This Statement authorises the implementation of the Proposal described and documented in Columns 1 and 2 of Table 2 of Schedule 1. The implementation of the Proposal is subject to the following implementation conditions and procedures and Schedule 2 details definitions of terms and phrases used in the implementation conditions and procedures.

1 Proposal Implementation

1-1 When implementing the proposal, the proponent shall not exceed the authorised extent of the proposal as defined in Column 3 of Table 2 in Schedule 1, unless amendments to the proposal and the authorised extent of the Proposal has been approved under the EP Act.

2 Contact Details

2-1 The proponent shall notify the CEO of any change of its name, physical address or postal address for the serving of notices or other correspondence within twenty eight (28) days of such change. Where the proponent is a corporation or an association of persons, whether incorporated or not, the postal address is that of the principal place of business or of the principal office in the State.

3 Time Limit for Proposal Implementation

- 3-1 The proponent shall not commence implementation of the proposal after the expiration of five (5) years from the date of this statement, and any commencement, within this five (5) year period, must be substantial.
- 3-2 Any commencement of implementation of the proposal, within five (5) years from the date of this statement, must be demonstrated as substantial by providing the CEO with written evidence, on or before the expiration of five (5) years from the date of this statement.

4 Compliance Reporting

- 4-1 The proponent shall prepare and maintain a compliance assessment plan to the satisfaction of the CEO.
- 4-2 The proponent shall submit to the CEO the compliance assessment plan required by condition 4-1 at least six (6) months prior to the first compliance assessment report required by condition 4-6, or prior to implementation, whichever is sooner.

The compliance assessment plan shall indicate:

- (i) the frequency of compliance reporting;
 - (ii) the approach and timing of compliance assessments;
 - (iii) the retention of compliance assessments;
 - (iv) the method of reporting of potential non-compliances and corrective actions taken;
 - (v) the table of contents of compliance assessment reports; and
 - (vi) public availability of compliance assessment reports.
- 4-3 The proponent shall assess compliance with conditions in accordance with the compliance assessment plan required by condition 4-1.
 - 4-4 The proponent shall retain reports of all compliance assessments described in the compliance assessment plan required by Condition 4-1 and shall make those reports available when requested by the CEO.
 - 4-5 The proponent shall advise the CEO of any potential non-compliance within seven (7) days of that non-compliance being known.
 - 4-6 The proponent shall submit to the CEO the first compliance assessment report fifteen (15) months from the date of issue of this Statement addressing the twelve (12) month period from the date of issue of this Statement and then annually from the date of submission of the first compliance assessment report, or as otherwise agreed in writing by the CEO.

The compliance assessment report shall:

- (i) be endorsed by the proponent's Managing Director or a person delegated to sign on the Managing Director's behalf;
- (ii) include a statement as to whether the proponent has complied with the conditions;
- (iii) identify all potential non-compliances and describe corrective and preventative actions taken;
- (iv) be made publicly available in accordance with the approved compliance assessment plan; and
- (v) indicate any proposed changes to the compliance assessment plan required by condition 4-1.

5 Public Availability of Data

5-1 Subject to condition 5-2, within a reasonable time period approved by the CEO of the issue of this statement and for the remainder of the life of the proposal the proponent shall make publicly available, in a manner approved by the CEO, all validated environmental data (including sampling design, sampling methodologies, empirical data and derived information products (e.g. maps)) relevant to the assessment of this proposal and implementation of this Statement.

5-2 If any data referred to in condition 5-1 contains particulars of:

- (1) a secret formula or process; or
- (2) confidential commercially sensitive information;

the proponent may submit a request for approval from the CEO to not make this data publically available. In making such a request the proponent shall provide the CEO with an explanation and reasons why the data should not be made publically available.

6 Terrestrial Fauna – Conservation Significant Fauna

6-1 Prior to the commencement of ground-disturbing activities, the proponent shall prepare a Conservation Significant Fauna Management Plan in consultation with Department of Parks and Wildlife to the requirements of the CEO to demonstrate Condition 6-2 has been met.

6-2 The objective of the Conservation Significant Fauna Management Plan is to ensure mine construction and operational activities are carried out in a manner that minimises impacts to conservation significant species of terrestrial fauna.

6-3 The Conservation Significant Fauna Management Plan shall include:

- (1) a pre-clearing survey for Bilby, Mulgara and Rock Wallabies, to identify any animals within the Development Envelope, as shown in Figure 1, and Access Road Development Envelope, as shown in Figure 2, prior to construction;
- (2) protocols and procedures to monitor Bilby, Mulgara and Rock Wallaby presence identified by Condition 6-3(1) during construction and operation;
- (3) detailed management measures, including refinement of the disturbance footprint, relocation of infrastructure, and contingency responses including translocation, if monitoring required by Condition 6-3(2) identifies animals within areas that could be potentially impacted during construction and operation;
- (4) SMART (specific, measurable, achievable, reliable and timely) criteria if monitoring required by Condition 6-3(2) identifies animals within areas that could be potentially impacted during operation; and
- (5) Contingency responses should an exceedance of criteria required by Condition 6-3(4) result in an impact to conservation significant species. The proponent shall implement the contingency responses and provide a report to the CEO within 21 days of the exceedance being identified.

6-4 Prior to the commencement of ground disturbing activities, unless otherwise agreed by the CEO, the proponent shall implement the approved Conservation Significant Fauna Management Plan required by Condition 6-1.

6-5 The proponent shall review the Conservation Significant Fauna Management Plan annually, and revise where required, or as directed by the CEO.

6-6 Revisions to the Conservation Significant Fauna Management Plan may be approved by the CEO.

6-7 The proponent shall implement approved revisions of the Conservation Significant Fauna Management Plan required by Condition 6-6, until advised otherwise by the CEO.

7 Terrestrial Fauna – Non-human Biota

7-1 Prior to the commencement of ground-disturbing activities, the proponent shall prepare a Non-Human Biota Management Plan in consultation with the Supervising Scientist to the requirements of the CEO to demonstrate Condition 7-2 has been met.

7-2 The objective of the Non-Human Biota Management Plan is to ensure mine construction and operational activities are carried out in a manner that minimise impacts to conservation significant species of terrestrial fauna.

7-3 The Non-Human Biota Management Plan shall include:

- (1) a methodology for assessing radiological impacts to conservation significant fauna using concentration ratios from Australian species where applicable;
 - (2) protocols and procedures to monitor pathways of radiation, including dust for the methodology developed under Condition 7-3(1);
 - (3) detailed management responses, including further assessment methodologies and radiation source management protocols if monitoring required by Condition 7-3(2) identifies an exceedance of a radiation dose target; and
 - (4) Should monitoring required by Condition 7-3(2) identify an exceedance of a radiation dose target, the proponent shall implement the management responses detailed by Condition 7-3(3) and provide a report to the CEO within 21 days of the dose target exceedance being identified.
- 7-4 Prior to the commencement of ground disturbing activities, unless otherwise agreed by the CEO, the proponent shall implement the approved Non-Human Biota Management Plan required by Condition 7-1.
- 7-5 The proponent shall review the Non-Human Biota Management Plan annually, and revise where required, or as directed by the CEO.
- 7-6 Revisions to the Non-Human Biota Management Plan may be approved by the CEO.
- 7-7 The proponent shall implement approved revisions of the Non-Human Biota Management Plan required by Condition 7-6, until advised otherwise by the CEO.

[Signed 4 March 2015]

Albert Jacob MLA
MINISTER FOR ENVIRONMENT; HERITAGE

Table 1: Summary of the Proposal

Proposal Title	Kintyre Uranium Project
Short Description	Construction and operation of an open cut uranium mine and associated infrastructure (airstrip, processing plant, waste rock landform, tailings storage facility, offices, accommodation and haul road), located approximately 270 km north east of Newman, Western Australia.

Table 2: Location and authorised extent of physical and operational elements

Column 1	Column 2	Column 3
Element	Location	Authorised Extent
Open-cut mine pit, waste rock dumps, tailing storage facility and associated infrastructure	Figure 1	Clearing of no more than 510 ha within a Mine Development Envelope of 1981 ha.
Haul road	Figure 2	Clearing of no more than 280 ha within an Access Road Development Envelope of 1880 ha.

Table 3: Abbreviations

Abbreviation	Term
ha	hectares
km	kilometres

Figures (attached)

- Figure 1 Mine Development Envelope
- Figure 2 Access Road Development Envelope

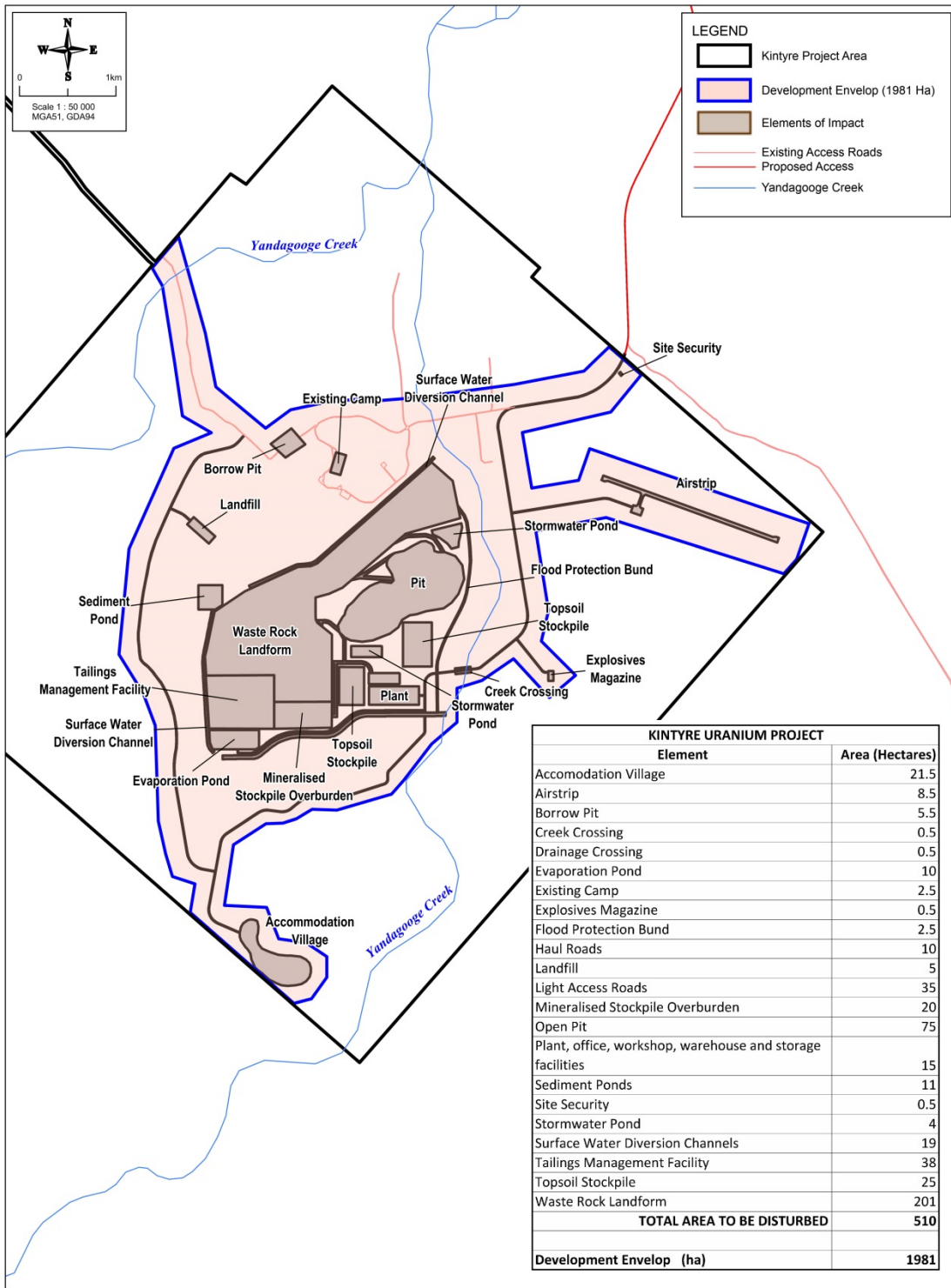


Figure 1 Mine Development Envelope

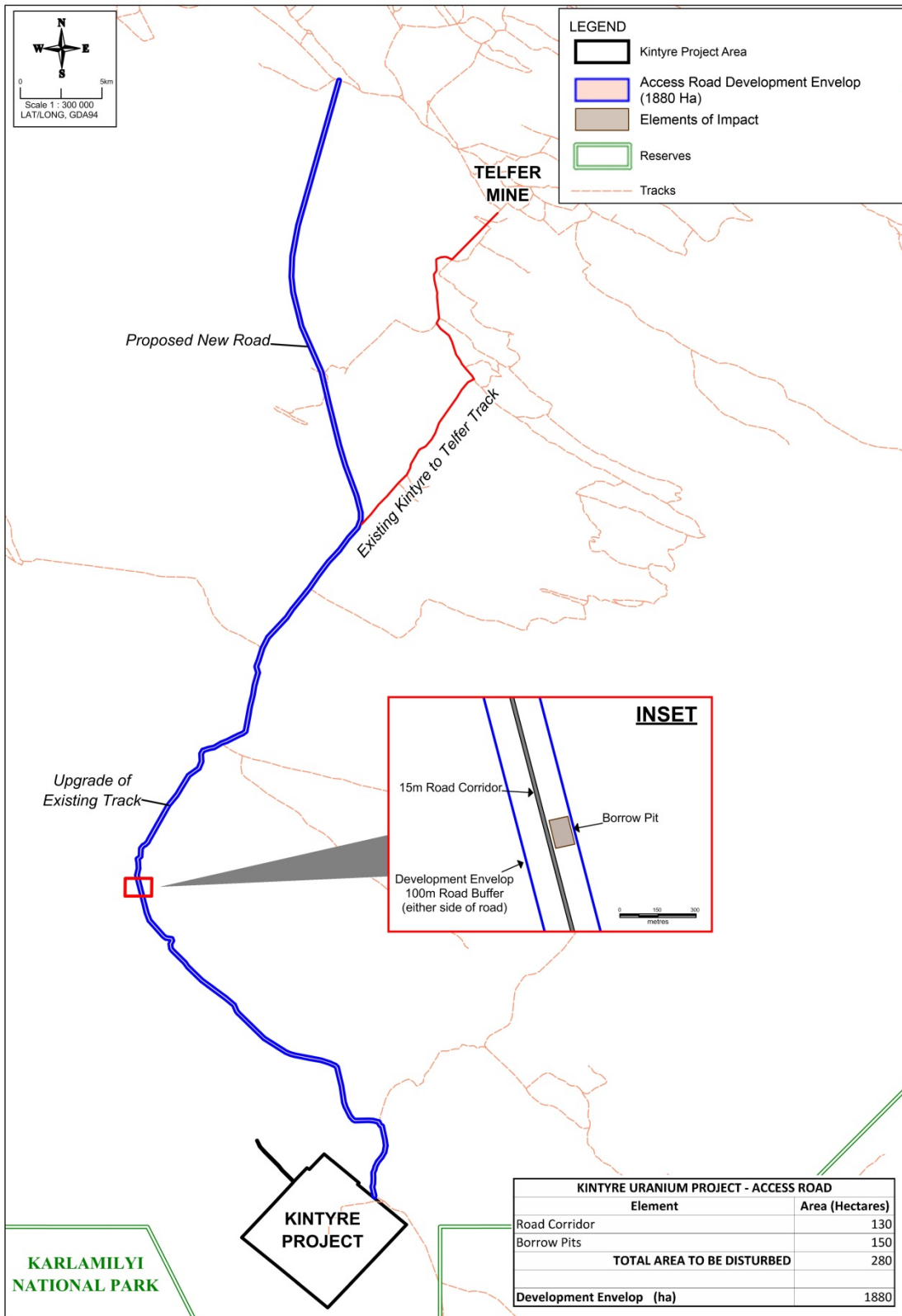


Figure 2 Access Road Development Envelope

Schedule 2

Term or Phrase	Definition
CEO	The Chief Executive Officer of the Department of the Public Service of the State responsible for the administration of section 48 of the <i>Environmental Protection Act 1986</i> , or his delegate.
Conservation Significant Fauna	Species declared under the <i>Wildlife Conservation Act 1950</i> as likely to become extinct, or rare, or otherwise in need of special protection.
EPA	Environmental Protection Authority
EP Act	<i>Environmental Protection Act 1986</i>
Supervising Scientist	Supervising Scientist is statutory position established under the Commonwealth <i>Environment Protection (Alligator Rivers Region) Act 1978</i> , presently within the Commonwealth Department of the Environment.

KINTYRE URANIUM PROJECT

All coordinates are in metres, listed in Map Grid of Australia Zone 51 (MGA Zone 51), Geocentric Datum of Australia 1994 (GDA94).

Mine Development Envelop (Figure 1)

No.	Easting	Northing
1	402445.10	7532997.44
2	402718.07	7533318.95
3	402996.24	7532321.82
4	403104.35	7531769.59
5	403618.59	7531343.00
6	403875.72	7531532.92
7	404273.09	7531617.65
8	404559.42	7531641.03
9	404763.95	7531626.42
10	405164.25	7531658.55
11	406189.82	7531795.89
12	406908.59	7531933.21
13	407169.21	7532183.19
14	407501.45	7531895.25
15	407186.17	7531509.54
16	406272.27	7531297.20
17	406367.77	7530724.20
18	406853.23	7530803.79
19	406967.03	7531129.70
20	409234.38	7530355.41
21	409106.54	7529989.10
22	408973.77	7529840.67
23	407136.50	7530419.70
24	406411.88	7530279.44
25	406542.85	7529458.82
26	406467.40	7529142.85
27	406821.39	7528790.33
28	406550.81	7528559.53
29	406181.05	7528961.69
30	405853.81	7528736.71
31	405596.68	7528657.82
32	405595.81	7528304.87

No.	Easting	Northing
33	405333.18	7528082.03
34	405044.45	7527705.30
35	404918.82	7527562.13
36	404354.90	7527398.50
37	404097.78	7527407.27
38	403937.08	7527307.93
39	403796.82	7527264.10
40	403621.52	7527258.26
41	403285.51	7527039.11
42	403192.01	7526413.84
43	403627.35	7526393.39
44	403753.00	7526069.06
45	404035.97	7526028.78
46	404250.85	7525885.53
47	404250.85	7525670.65
48	404091.68	7525447.82
49	403910.61	7525402.54
50	402839.32	7526342.78
51	402888.13	7526635.91
52	402654.39	7526711.87
53	402584.26	7526945.61
54	402507.97	7527286.19
55	402476.15	7528272.13
56	402353.44	7528599.39
57	402102.10	7529005.20
58	402205.56	7530095.49
59	402668.99	7531135.55
60	403057.60	7531296.25
61	402759.57	7531468.63
62	402677.75	7532015.02
63	402552.12	7532812.69
64	402445.10	7532997.44

Haul Road (Figure 2)

No.	Easting	Northing
1	402202.06	7541553.40
2	402502.70	7541457.42
3	403372.65	7541280.61
4	404097.25	7541139.06
5	404103.03	7541137.76
6	404103.86	7541137.55
7	404109.02	7541136.25
8	404612.15	7540973.62
9	404613.08	7540973.29
10	404622.69	7540969.58
11	404989.01	7540794.13
12	404994.28	7540791.40
13	404994.90	7540791.07
14	404998.94	7540788.56
15	405000.39	7540787.57
16	405014.78	7540776.69
17	405127.80	7540664.46
18	405135.06	7540656.98
19	405136.41	7540655.32
20	405147.53	7540640.01
21	405152.33	7540630.63
22	405153.17	7540628.64
23	405159.14	7540611.62
24	405450.21	7539350.27
25	405451.70	7539343.30
26	405452.02	7539341.20
27	405603.35	7538312.02
28	405712.56	7537990.31
29	405981.16	7537432.55
30	406136.09	7537234.33
31	406203.81	7537196.88
32	407011.79	7537222.97
33	407014.26	7537222.99
34	407014.47	7537222.99
35	407015.09	7537222.99
36	407022.92	7537222.82
37	407322.90	7537199.15
38	407330.23	7537198.31
39	407331.56	7537198.09
40	407342.81	7537195.72

No.	Easting	Northing
41	407655.55	7537105.70
42	407667.22	7537101.89
43	407668.97	7537101.13
44	407680.95	7537095.33
45	407697.41	7537083.58
46	407700.21	7537080.94
47	407720.55	7537056.49
48	407723.36	7537051.19
49	407723.88	7537050.09
50	407727.74	7537041.69
51	407755.28	7536966.91
52	407807.47	7536871.57
53	407883.84	7536832.28
54	407890.26	7536829.00
55	407900.29	7536822.41
56	407900.71	7536822.08
57	407907.12	7536816.92
58	407909.92	7536814.27
59	407930.26	7536789.82
60	407936.52	7536777.02
61	407937.35	7536774.81
62	407942.50	7536758.46
63	408123.96	7535865.05
64	408125.24	7535858.30
65	408180.07	7535470.06
66	408180.61	7535465.63
67	408180.73	7535464.52
68	408181.30	7535454.67
69	408180.25	7535439.50
70	408180.06	7535438.06
71	408179.26	7535433.63
72	408100.44	7534998.10
73	408095.28	7534980.69
74	408094.47	7534978.47
75	408088.88	7534966.59
76	407941.19	7534680.10
77	407940.68	7534678.99
78	407933.13	7534667.66
79	407932.41	7534666.66
80	407689.12	7534347.17

No.	Easting	Northing
-----	---------	----------

No.	Easting	Northing
-----	---------	----------

81	407551.35	7534057.75
82	407511.26	7533886.24
83	407509.34	7533879.70
84	407509.04	7533878.70
85	407506.71	7533872.27
86	407428.01	7533663.02
87	407440.97	7533286.03
88	407441.09	7533282.93
89	407441.10	7533282.71
90	407441.10	7533282.27
91	407440.93	7533276.95
92	407426.43	7532943.65
93	407425.36	7532932.57
94	407425.16	7532931.24
95	407423.66	7532923.82
96	407382.92	7532741.46
97	407507.73	7532178.07
98	407509.42	7532168.77
99	407509.65	7532167.12
100	407510.65	7532153.94
101	407508.41	7532132.35
102	407507.81	7532129.36
103	407502.14	7532111.50
104	407471.71	7532034.27
105	407466.72	7532024.27
106	407466.31	7532023.50
107	407466.11	7532023.05
108	407446.06	7531998.35
109	407443.30	7531995.69
110	407426.99	7531983.74
111	407407.10	7531977.02
112	407266.47	7532098.89
113	407273.85	7532117.89
114	407291.30	7532162.05
115	407168.51	7532716.72
116	407166.80	7532726.01
117	407166.59	7532727.67
118	407165.58	7532740.83
119	407166.33	7532753.24
120	407166.52	7532755.01

121	407168.52	7532766.43
122	407212.26	7532962.63
123	407226.11	7533282.54
124	407212.63	7533676.67
125	407212.51	7533679.66
126	407212.51	7533679.88
127	407214.95	7533702.26
128	407215.55	7533705.15
129	407220.41	7533720.67
130	407304.06	7533943.35
131	407345.26	7534119.28
132	407347.88	7534127.82
133	407348.39	7534129.38
134	407353.67	7534141.92
135	407501.20	7534451.66
136	407503.35	7534455.54
137	407503.54	7534455.88
138	407506.92	7534461.32
139	407511.11	7534467.21
140	407511.82	7534468.21
141	407756.03	7534789.05
142	407892.11	7535052.99
143	407965.03	7535456.16
144	407913.09	7535824.28
145	407742.45	7536664.17
146	407682.61	7536694.92
147	407676.30	7536698.21
148	407666.27	7536704.79
149	407665.86	7536705.12
150	407659.44	7536710.29
151	407656.64	7536712.92
152	407636.40	7536737.27
153	407636.30	7536737.38
154	407561.61	7536873.99
155	407561.09	7536875.09
156	407557.22	7536883.48
157	407545.81	7536914.63
158	407295.93	7536986.54
159	407012.65	7537008.87
160	406180.89	7536981.97

No.	Easting	Northing
161	406178.42	7536981.96
162	406178.21	7536981.95
163	406158.01	7536983.83
164	406154.50	7536984.58
165	406128.17	7536993.94
166	406124.66	7536995.69
167	406124.14	7536996.13
168	406011.76	7537058.33
169	406001.73	7537064.91
170	405999.66	7537066.56
171	405982.56	7537082.51
172	405805.09	7537309.71
173	405804.36	7537310.70
174	405800.10	7537316.54
175	405796.67	7537321.95
176	405796.47	7537322.28
177	405793.97	7537326.91
178	405517.43	7537900.89
179	405512.83	7537911.05
180	405511.99	7537913.37
181	405396.16	7538254.63
182	405395.74	7538256.07
183	405392.35	7538270.33
184	405240.15	7539304.82
185	404957.01	7540531.91
186	404878.93	7540609.48
187	404539.07	7540772.24
188	404051.12	7540929.99
189	403332.72	7541070.25
190	402455.55	7541248.55
191	402444.93	7541251.03
192	402129.42	7541351.79
193	402128.49	7541352.12
194	402119.20	7541355.60
195	401870.06	7541473.60
196	401860.96	7541478.20
197	401860.14	7541478.73
198	401860.03	7541478.73
199	401856.62	7541480.82
200	400527.55	7542370.22

No.	Easting	Northing
201	400520.92	7542374.72
202	400519.68	7542375.71
203	400509.84	7542383.95
204	398966.89	7543980.15
205	398966.47	7543980.59
206	398960.87	7543986.53
207	398819.84	7544162.75
208	398819.00	7544163.85
209	398810.37	7544176.20
210	398810.17	7544176.64
211	398809.74	7544177.41
212	398804.63	7544187.33
213	398649.70	7544566.50
214	398144.97	7545009.91
215	396683.82	7546151.76
216	396682.98	7546152.42
217	396673.03	7546160.77
218	395802.31	7547063.45
219	395801.48	7547064.44
220	395794.62	7547072.81
221	395621.64	7547330.59
222	394862.48	7548122.70
223	394861.55	7548123.80
224	394853.12	7548134.38
225	394764.56	7548272.16
226	394760.28	7548278.78
227	394752.65	7548294.78
228	394751.70	7548297.54
229	394746.72	7548317.32
230	394708.78	7548591.62
231	394708.35	7548594.61
232	394708.25	7548595.60
233	394707.55	7548606.55
234	394711.08	7548633.48
235	394711.98	7548637.03
236	394720.20	7548657.56
237	394811.66	7548841.96
238	394805.45	7548862.06
239	394524.39	7548901.13
240	394505.08	7548905.54

No.	Easting	Northing
241	394502.39	7548906.51
242	394486.46	7548913.49
243	394485.01	7548914.26
244	394484.08	7548914.81
245	394472.06	7548922.81
246	394304.78	7549062.72
247	394303.85	7549063.60
248	394295.86	7549071.29
249	393446.57	7550069.98
250	393445.63	7550071.19
251	393436.36	7550084.29
252	393433.54	7550089.59
253	393433.02	7550090.69
254	393429.04	7550099.30
255	393254.30	7550575.03
256	393253.98	7550575.92
257	393250.50	7550586.63
258	393099.80	7551211.09
259	392633.54	7553076.74
260	392631.83	7553084.59
261	392631.51	7553086.47
262	392629.85	7553103.73
263	392630.69	7553116.91
264	392630.89	7553118.57
265	392632.47	7553127.65
266	392724.13	7553571.22
267	392701.91	7553969.39
268	392664.10	7554158.32
269	392663.03	7554164.40
270	392662.81	7554165.95
271	392661.68	7554180.01
272	392665.62	7554208.15
273	392666.62	7554211.92
274	392675.76	7554233.69
275	392687.51	7554250.04
276	392689.14	7554252.04
277	392699.70	7554262.41
278	392845.89	7554395.49
279	392863.30	7554882.60
280	392867.87	7554908.64

No.	Easting	Northing
281	392868.88	7554912.08
282	392877.30	7554931.40
283	392883.84	7554941.40
284	392884.45	7554942.29
285	393024.28	7555132.67
286	393041.70	7555149.83
287	393043.85	7555151.62
288	393053.00	7555157.88
289	393053.51	7555158.22
290	393054.95	7555159.12
291	393062.97	7555163.27
292	393167.01	7555215.90
293	393291.11	7555351.80
294	393372.69	7555538.45
295	393376.25	7555545.34
296	393376.56	7555545.89
297	393476.08	7555732.88
298	394545.54	7557785.93
299	394545.84	7557786.71
300	394555.44	7557800.61
301	395072.18	7558493.53
302	395778.17	7559753.29
303	395779.39	7559755.39
304	395793.93	7559773.98
305	395794.03	7559774.09
306	395796.07	7559776.32
307	395809.52	7559787.70
308	396388.11	7560226.36
309	396536.09	7560634.07
310	396506.24	7561109.56
311	396506.00	7561115.54
312	396505.99	7561115.98
313	396509.93	7561144.12
314	396510.94	7561147.89
315	396520.09	7561169.66
316	396646.55	7561399.64
317	396647.36	7561400.97
318	396662.30	7561420.34
319	396662.40	7561420.45
320	396669.48	7561427.24

No.	Easting	Northing
321	396685.71	7561438.97
322	396696.30	7561444.36
323	396697.74	7561445.03
324	396706.80	7561448.41
325	397045.25	7561566.43
326	397045.87	7561566.65
327	397046.59	7561566.88
328	397056.18	7561569.60
329	397361.89	7561643.44
330	397798.91	7561919.93
331	397799.12	7561920.05
332	397804.36	7561922.85
333	397805.70	7561923.52
334	397817.13	7561928.47
335	398157.16	7562059.64
336	398625.04	7562324.80
337	398625.55	7562325.25
338	398631.72	7562328.50
339	398893.18	7562467.56
340	399099.26	7562568.18
341	399231.11	7562672.42
342	399379.40	7563564.64
343	399480.42	7564232.81
344	399480.92	7564235.70
345	399481.01	7564236.25
346	399481.92	7564240.35
347	399654.38	7565022.12
348	399746.08	7565633.68
349	399748.39	7565644.54
350	399748.58	7565645.21
351	399960.37	7566465.96
352	399852.50	7566823.18
353	399849.74	7566833.67
354	399849.31	7566835.88
355	399847.23	7566855.36
356	399849.36	7566876.52
357	399849.87	7566879.06
358	399853.60	7566892.04
359	399904.26	7567044.02
360	400001.29	7567324.16

No.	Easting	Northing
361	400205.77	7568031.51
362	400209.83	7568075.48
363	400213.12	7568093.00
364	400213.83	7568095.66
365	400220.84	7568113.41
366	400563.19	7568836.24
367	400565.43	7568840.47
368	400565.64	7568840.80
369	400569.01	7568846.24
370	400575.36	7568854.80
371	400576.38	7568856.14
372	401731.47	7570193.44
373	402070.61	7570737.42
374	402075.31	7570743.87
375	402075.73	7570744.43
376	403092.32	7572092.93
377	403623.85	7572940.15
378	404257.88	7573841.00
379	404264.65	7573848.91
380	404684.01	7574338.40
381	404938.88	7574636.72
382	405442.39	7575381.85
383	405448.95	7575389.86
384	406012.98	7576075.01
385	406187.28	7576592.02
386	406184.70	7577026.38
387	405938.97	7578052.32
388	405225.56	7580071.54
389	405223.25	7580078.17
390	404835.91	7581439.66
391	404834.54	7581444.52
392	404167.23	7584256.47
393	403723.48	7586219.90
394	402490.61	7589189.96
395	402488.30	7589195.82
396	402487.88	7589197.03
397	402484.72	7589206.87
398	402206.55	7590366.39
399	401955.96	7591438.52
400	401953.83	7591449.68

No.	Easting	Northing
401	401953.51	7591451.67
402	401838.91	7592466.63
403	401838.11	7592478.79
404	401838.11	7592479.13
405	401838.18	7592483.45
406	401884.17	7593818.53
407	401884.64	7593825.17
408	401884.74	7593826.17
409	401885.73	7593833.37
410	402225.72	7595866.64
411	402228.04	7595876.29
412	404692.64	7605408.83
413	404697.11	7605421.59
414	404697.83	7605423.36
415	404702.84	7605433.36
416	404722.97	7605458.05
417	404725.75	7605460.72
418	404742.13	7605472.67
419	404767.94	7605483.12
420	404771.66	7605484.13
421	404795.96	7605487.27
422	404820.31	7605484.42
423	404824.03	7605483.45
424	404849.97	7605473.30
425	404866.49	7605461.56
426	404869.29	7605458.91
427	404889.73	7605434.47
428	404899.17	7605412.82
429	404900.22	7605409.06
430	404904.53	7605380.98
431	404903.28	7605364.58
432	404902.98	7605362.59
433	404900.56	7605351.83
434	402437.57	7595825.87
435	402099.46	7593804.01
436	402053.98	7592483.55
437	402167.03	7591482.54
438	402415.69	7590418.37
439	402692.15	7589266.25
440	403925.19	7586295.50

No.	Easting	Northing
441	403928.44	7586287.11
442	403928.86	7586285.78
443	403931.40	7586277.17
444	404376.73	7584306.65
445	405043.36	7581497.47
446	405429.10	7580141.50
447	406143.22	7578120.18
448	406146.90	7578108.90
449	406396.75	7577065.71
450	406399.00	7577053.99
451	406399.21	7577052.22
452	406400.11	7577039.84
453	406402.85	7576575.58
454	406400.70	7576554.43
455	406400.20	7576551.88
456	406396.36	7576538.57
457	406210.08	7575986.18
458	406207.32	7575979.41
459	406206.82	7575978.19
460	406202.42	7575969.53
461	406193.31	7575956.31
462	406192.39	7575955.09
463	405616.15	7575255.26
464	405112.13	7574509.34
465	405104.23	7574499.88
466	404842.69	7574193.90
467	404429.07	7573711.07
468	403802.41	7572820.80
469	403270.57	7571972.92
470	403266.07	7571966.69
471	403265.66	7571966.13
472	402249.06	7570617.75
473	401908.08	7570070.66
474	401900.60	7570060.87
475	401899.88	7570059.98
476	400750.33	7568729.26
477	400422.34	7568036.64
478	400419.15	7568001.42
479	400417.16	7567989.34
480	400416.87	7567987.90

No.	Easting	Northing
480	400416.87	7567987.90
481	400414.75	7567980.14
482	400206.62	7567260.37
483	400204.79	7567254.71
484	400106.86	7566972.03
485	400067.75	7566854.54
486	400174.36	7566501.08
487	400177.10	7566490.58
488	400177.53	7566488.37
489	400179.62	7566468.90
490	400178.38	7566452.51
491	400178.08	7566450.51
492	400175.67	7566439.65
493	399957.94	7565595.50
494	399866.42	7564985.72
495	399865.93	7564982.73
496	399865.83	7564982.18
497	399864.92	7564978.07
498	399692.45	7564196.31
499	399591.83	7563530.35
500	399436.58	7562595.58
501	399430.92	7562575.95
502	399430.01	7562573.51
503	399424.10	7562561.40
504	399409.98	7562542.50
505	399407.92	7562540.16
506	399394.48	7562528.22
507	399220.94	7562390.95
508	399216.83	7562388.27
509	399216.22	7562387.82
510	399210.76	7562384.36
511	399201.61	7562379.65
512	398988.74	7562275.77
513	398731.50	7562138.95
514	398258.28	7561870.77
515	398257.77	7561870.32
516	398254.17	7561868.41
517	398244.91	7561864.05
518	398243.88	7561863.60
519	397902.20	7561731.75
520	397459.12	7561451.45

No.	Easting	Northing
521	397458.91	7561451.34
522	397445.95	7561445.05
523	397443.89	7561444.15
524	397428.14	7561439.18
525	397110.26	7561362.38
526	396814.65	7561259.37
527	396722.97	7561092.49
528	396752.13	7560625.85
529	396752.38	7560619.87
530	396752.38	7560619.43
531	396750.55	7560599.93
532	396750.06	7560597.16
533	396745.01	7560579.86
534	396578.77	7560121.56
535	396573.38	7560109.90
536	396572.88	7560108.90
537	396572.06	7560107.46
538	396556.30	7560086.77
539	396554.15	7560084.43
540	396540.71	7560073.05
541	395954.83	7559628.91
542	395256.48	7558382.84
543	395255.26	7558380.72
544	395250.24	7558373.84
545	395246.87	7558368.94
546	394730.95	7557677.02
547	393663.72	7555628.54
548	393567.05	7555446.55
549	393480.09	7555247.58
550	393476.53	7555240.69
551	393476.23	7555240.13
552	393475.41	7555238.69
553	393468.36	7555228.35
554	393467.24	7555226.80
555	393459.56	7555218.11
556	393310.06	7555054.35
557	393292.20	7555039.95
558	393290.56	7555038.83
559	393288.51	7555037.61
560	393287.07	7555036.71

No.	Easting	Northing
561	393279.05	7555032.56
562	393180.36	7554982.73
563	393077.12	7554841.98
564	393059.27	7554342.81
565	393054.70	7554316.75
566	393053.69	7554313.31
567	393045.26	7554294.00
568	393033.51	7554277.64
569	393031.87	7554275.64
570	393021.32	7554265.27
571	392886.51	7554142.47
572	392914.06	7554004.61
573	392914.28	7554003.50
574	392916.13	7553989.23
575	392939.62	7553569.81
576	392939.87	7553564.61
577	392939.87	7553564.16
578	392939.03	7553550.99
579	392938.84	7553549.33
580	392937.24	7553540.24
581	392847.68	7553106.77
582	393308.18	7551264.55
583	393457.82	7550644.17
584	393623.52	7550193.06
585	394451.40	7549219.58
586	394583.42	7549108.99
587	394901.73	7549064.85
588	394921.05	7549060.44
589	394923.74	7549059.47
590	394941.12	7549051.72
591	394957.59	7549039.99
592	394960.39	7549037.35
593	394980.77	7549012.91
594	394985.05	7549004.85
595	394985.68	7549003.42
596	394989.98	7548992.50
597	395028.98	7548866.55
598	395032.26	7548854.39
599	395032.69	7548852.07
600	395034.56	7548833.49
601	395031.03	7548806.56

No.	Easting	Northing
601	395031.03	7548806.56
602	395030.12	7548803.01
603	395021.91	7548782.48
604	394926.07	7548589.43
605	394956.30	7548370.65
606	395026.53	7548261.41
607	395785.38	7547469.63
608	395786.21	7547468.64
609	395793.07	7547460.27
610	395965.94	7547202.59
611	396819.85	7546317.28
612	398281.01	7545175.52
613	398807.72	7544712.88
614	398816.64	7544704.63
615	398818.40	7544702.65
616	398832.45	7544684.25
617	398832.65	7544683.81
618	398833.07	7544683.03
619	398838.18	7544673.10
620	398996.88	7544284.89
621	399123.25	7544126.85
622	400653.75	7542543.51
623	401966.57	7541664.95

Notes

The following notes are provided for information and do not form a part of the implementation conditions of the Statement:

- The proponent for the time being nominated by the Minister for Environment under section 38(6) of the *Environmental Protection Act 1986* is responsible for the implementation of the proposal unless and until that nomination has been revoked and another person is nominated.
- If the person nominated by the Minister, ceases to have responsibility for the proposal, that person is required to provide written notice to the Environmental Protection Authority of its intention to relinquish responsibility for the proposal and the name of the person to whom responsibility for the proposal will pass or has passed. The Minister for Environment may revoke a nomination made under section 38(6) of the *Environmental Protection Act 1986* and nominate another person.
- To initiate a change of proponent, the nominated proponent and proposed proponent are required to complete and submit *Post Assessment Form 1 – Application to Change Nominated Proponent*.
- The General Manager of the Office of the Environmental Protection Authority was the Chief Executive Officer of the Department of the Public Service of the State responsible for the administration of section 48 of the *Environmental Protection Act 1986* at the time the Statement was signed by the Minister for Environment.