

**THIS DOCUMENT**

This document has been produced by the Office of the Appeals Convenor as an electronic version of the original Statement for the proposal listed below as signed by the Minister and held by this Office. Whilst every effort is made to ensure its accuracy, no warranty is given as to the accuracy or completeness of this document.

The State of Western Australia and its agents and employees disclaim liability, whether in negligence or otherwise, for any loss or damage resulting from reliance on the accuracy or completeness of this document.

Copyright in this document is reserved to the Crown in right of the State of Western Australia. Reproduction except in accordance with copyright law is prohibited.

Published on: 24 October 2014

Statement No. 988

**STATEMENT THAT A PROPOSAL MAY BE IMPLEMENTED  
(PURSUANT TO THE PROVISIONS OF THE  
ENVIRONMENTAL PROTECTION ACT 1986)**

JACKSON 4 (J4) IRON ORE MINE AND HAUL ROAD ON M77/1242, L77/250,  
L77/252 AND L77/254

**Proposal:** To develop the Jackson 4 (J4) deposit and construct and operate an iron ore mine and supporting infrastructure, access track and haul road in the Goldfields region of Western Australia, approximately 60 kilometres north-west of Koolyanobbing, as documented in Schedule 1 of this Statement.

**Proponent:** Polaris Metals Pty Ltd  
Australian Company Number 085 223 570

**Proponent Address:** 1 Sleat Road  
APPLECROSS WA 6153

**Assessment Number:** 1998

**Report of the Environmental Protection Authority Number:** 1511

This Statement authorises the implementation of the proposal described and documented in Columns 1 and 2 of Table 2 of Schedule 1. The implementation of the proposal is subject to the following implementation conditions and procedures and Schedule 2 details definitions of terms and phrases used in the implementation conditions and procedures.

**1 Proposal Implementation**

1-1 When implementing the proposal, the proponent shall not exceed the authorised extent of the proposal as defined in Column 3 of Table 2 in Schedule 1, unless amendments to the proposal and the authorised extent of the proposal has been approved under the EP Act.

Published on:

## **2 Contact Details**

- 2-1 The proponent shall notify the CEO of any change of its name, physical address or postal address for the serving of notices or other correspondence within twenty eight (28) days of such change. Where the proponent is a corporation or an association of persons, whether incorporated or not, the postal address is that of the principal place of business or of the principal office in the State.

## **3 Time Limit for Proposal Implementation**

- 3-1 The proponent shall not commence implementation of the proposal after the expiration of five (5) years from the date of this Statement, and any commencement, within this five (5) year period, must be substantial.
- 3-2 Any commencement of implementation of the proposal, within five (5) years from the date of this Statement, must be demonstrated as substantial by providing the CEO with written evidence, on or before the expiration of five (5) years from the date of this Statement.

## **4 Compliance Reporting**

- 4-1 The proponent shall prepare and maintain a compliance assessment plan to the satisfaction of the CEO.
- 4-2 The proponent shall submit to the CEO the compliance assessment plan required by condition 4-1 at least six (6) months prior to the first compliance assessment report required by condition 4-6, or prior to implementation, whichever is sooner.

The compliance assessment plan shall indicate:

- (1) the frequency of compliance reporting;
  - (2) the approach and timing of compliance assessments;
  - (3) the retention of compliance assessments;
  - (4) the method of reporting of potential non-compliances and corrective actions taken;
  - (5) the table of contents of compliance assessment reports; and
  - (6) public availability of compliance assessment reports.
- 4-3 The proponent shall assess compliance with conditions in accordance with the compliance assessment plan required by condition 4-1.
- 4-4 The proponent shall retain reports of all compliance assessments described in the compliance assessment plan required by condition 4-1 and shall make those reports available when requested by the CEO.
- 4-5 The proponent shall advise the CEO of any potential non-compliance within seven days of that potential non-compliance being known.
- 4-6 The proponent shall submit to the CEO the first compliance assessment report 15 months from the date of issue of this Statement addressing the twelve (12) month period from the date of issue of this Statement and then annually from the date of submission of the first compliance assessment report, or as otherwise agreed in writing by the CEO.

The compliance assessment report shall:

- (1) be endorsed by the proponent's CEO or a person delegated to sign on the CEO behalf;
- (2) include a statement as to whether the proponent has complied with the conditions;
- (3) identify all potential non-compliances and describe corrective and preventative actions taken;
- (4) be made publicly available in accordance with the approved compliance assessment plan; and
- (5) indicate any proposed changes to the compliance assessment plan required by condition 4-1.

## **5 Public Availability of Data**

5-1 Subject to condition 5-2, within a reasonable time period approved by the CEO of the issue of this Statement and for the remainder of the life of the proposal the proponent shall make publicly available, in a manner approved by the CEO, all validated environmental data (including sampling design, sampling methodologies, empirical data and derived information products (e.g. maps)) relevant to the assessment of this proposal and implementation of this Statement.

5-2 If any data referred to in condition 5-1 contains particulars of:

- (1) a secret formula or process; or
- (2) confidential commercially sensitive information;

the proponent may submit a request for approval from the CEO to not make this data publicly available. In making such a request the proponent shall provide the CEO with an explanation and reasons why the data should not be made publicly available.

## **6 Design, Construction and Closure of the Haul Road**

6-1 The proponent shall ensure that the Haul Road, including borrow pit sites, within the Proposal Development Envelope defined in Figure 1 of Schedule 1 and geographic coordinates in Schedule 3, is sited and constructed to avoid DRF and TECs, and minimise the impact to Priority 1 Listed Flora species and other conservation significant flora and vegetation.

6-2 The proponent shall ensure that the design, construction and operation of the Haul Road does not impact the surrounding environment and existing infrastructure from the effects of surface water flow impedance, dust, use of saline water, weed encroachment and fire.

6-3 Prior to construction of the Haul Road, the proponent shall update, and submit to the CEO, its Operational Management System (MRL-OHM-PLN-004) which shall include information that demonstrates the outcomes as specified in conditions 6-1 and 6-2 can be met.

6-4 In the event the management actions/strategies outlined in the Operational Management System are not meeting the requirements of 6-1 and 6-2, then the proponent shall implement contingency actions to the requirements of the CEO.

- 6-5 At the completion of mining and related activities at the minesite, the proponent shall completely remove and rehabilitate the Haul Road to the requirements of the CEO on the advice of Parks and Wildlife, unless an alternate arrangement for the retention of the Haul Road is approved to the requirements of the CEO.
- 6-6 The design and operation of the Haul Road shall ensure continued access to the Mount Manning – Helena-Aurora Ranges Conservation Park to the requirements of the CEO on the advice of Parks and Wildlife for the following publically accessible access tracks:
- (1) Bullfinch-Evanston Road to the Helena-Aurora Ranges via Marda Dam (referred to in condition 8);
  - (2) southern access to the Helena-Aurora Ranges from Koolyanobbing; and
  - (3) northern and southern access through the former Jaurdi Pastoral Lease.

## **7 Trenching for the Haul Road**

- 7-1 To avoid adverse impacts on fauna species, the proponent shall ensure that open trenches associated with construction of the Haul Road in the Proposal Development Envelope defined in Figure 1 of Schedule 1 and geographic coordinates in Schedule 3, are cleared of trapped fauna by fauna-rescue personnel at least twice daily. Details of all fauna recovered shall be recorded. The first daily clearing shall be completed prior to any construction or backfilling or no later than three hours after sunrise, whichever event occurs first, and shall be repeated between the hours of 3:00pm and 6:00pm of that same day.
- 7-2 The open trenches shall also be cleared, and fauna details recorded, by fauna-rescue personnel no more than one hour prior to backfilling of trenches.
- 7-3 The fauna-rescue personnel shall obtain the appropriate licences required for fauna rescue under the *Wildlife Conservation Act 1950* and be trained in the following:
- (1) fauna identification, capture and handling (including specially protected fauna and venomous snakes likely to occur in the area);
  - (2) identification of tracks, scats, burrows and nests of conservation-significant species;
  - (3) fauna vouchering (of deceased animals);
  - (4) assessing injured fauna for suitability for release, rehabilitation or euthanasia;
  - (5) familiarity with the ecology of the species which may be encountered in order to be able to appropriately translocate fauna encountered; and
  - (6) performing euthanasia.
- 7-4 Open trench lengths shall not exceed a maximum of 2.5 km at any time.
- 7-5 Ramps providing egress points and/or fauna refuges providing suitable shelter from the sun and predators for trapped fauna are to be placed in the trench at intervals not exceeding 50 m.

- 7-6 The proponent shall produce a report detailing fauna management within the open trenches associated with construction of the Haul Road in the Proposal Development Envelope. The report shall include the following:
- (1) details of all fauna inspections;
  - (2) the number and type of fauna cleared from trenches;
  - (3) fauna mortalities; and
  - (4) all actions taken.
- 7-7 The report shall be provided to the CEO and Parks and Wildlife, 21 days after the completion of the construction of the Haul Road in the Proposal Development Envelope, or at a timeframe agreed by the CEO.

## **8 Construction of the Diverted Access Track**

- 8-1 Subject to satisfaction of conditions 8-2 to 8-4, the proponent is to construct an Access Track diversion (Diverted Access Track) to a standard suitable for single vehicular use within the Access Track Development Envelope which is delineated in Figure 3 of Schedule 1 and defined by the spatial co-ordinates provided in Schedule 3.
- 8-2 The proponent shall ensure that the siting and construction of the Diverted Access Track avoids and minimises, where practicable, impacts to significant fauna, flora species, communities, habitat trees, soil and surface water flows.
- 8-3 The proponent shall not cause or allow any ground disturbing activities within the Access Track Development Envelope prior to:
- (1) undertaking a Flora and Vegetation Survey in accordance with the EPA GS 51 Terrestrial Flora and Vegetation Surveys for Environmental Impact Assessment in Western Australia. The Survey is to identify and spatially define the location of all DRF and Priority flora, TECs and other conservation significant flora and vegetation within the Access Track Development Envelope;
  - (2) undertaking a fauna survey in accordance with the EPA GS 56 Terrestrial Fauna Surveys for Environmental Impact Assessment in Western Australia. The Survey is to identify significant fauna and spatially define significant fauna habitat in Access Track Development Envelope;
  - (3) reporting the results of the Fauna, Flora and Vegetation Surveys to the CEO and the DPAW;
  - (4) providing a plan of the preferred alignment for the Diverted Access Track which meets the objective provided for in condition 8-2 and which has been endorsed by the Department of Lands;
  - (5) receiving written notice from the CEO, on advice from Parks and Wildlife, that the Fauna, Flora and Vegetation Surveys undertaken satisfy the requirements of EPA GS 51 and EPA GS 56 and the preferred alignment for the Diverted Access Track meets the objective provided for in condition 8-2.

8-4 The proponent shall ensure that access along the Diverted Access Track is maintained to a standard suitable for single vehicular use during the life of mining operations and related activities at the minesite.

[Signed on 24 October 2014]

Albert Jacob MLA  
**MINISTER FOR ENVIRONMENT; HERITAGE**

**Table 1: Summary of the Proposal**

<b>Proposal Title</b>	Jackson 4 (J4) Iron Ore Mine and Haul Road on M77/1242, L77/250, L77/252, L77/254.
<b>Short Description</b>	The proposal is to develop and operate an iron ore mine and supporting mine infrastructure, access track and haul road, 60 km north-west of Koolyanobbing, in the Goldfields region of Western Australia.

**Table 2: Location and authorised extent of physical and operational elements**

<b>Column 1</b>	<b>Column 2</b>	<b>Column 3</b>
<b>Element</b>	<b>Location</b>	<b>Authorised Extent</b>
Mine pit, waste dumps, accommodation camp and other supporting mine infrastructure	Figure 2 and geographic coordinates of the Proposal Development Envelope in Schedule 3.	Clearing of no more than 538 ha of native vegetation within the 4,576 ha Proposal Development Envelope.
Haul road	Figure 1 and geographic coordinates of the Proposal Development Envelope in Schedule 3.	Clearing of no more than 293 ha of native vegetation within the 4,576 ha Proposal Development Envelope.
Access track	Figure 3 and geographic coordinates for the diversion of the Access Track Development Envelope in Schedule 3.	Clearing of no more than 2 ha of native vegetation within the 64 ha Access Track Development Envelope.

**Figures (attached)**

- Figure 1: Proposal regional locality
- Figure 2: Mine and supporting infrastructure conceptual disturbance footprint and Development Envelope
- Figure 3: Development Envelope for the diversion of the access track
- Figure 4: Department of Parks and Wildlife Priority Ecological Community (PEC) boundaries

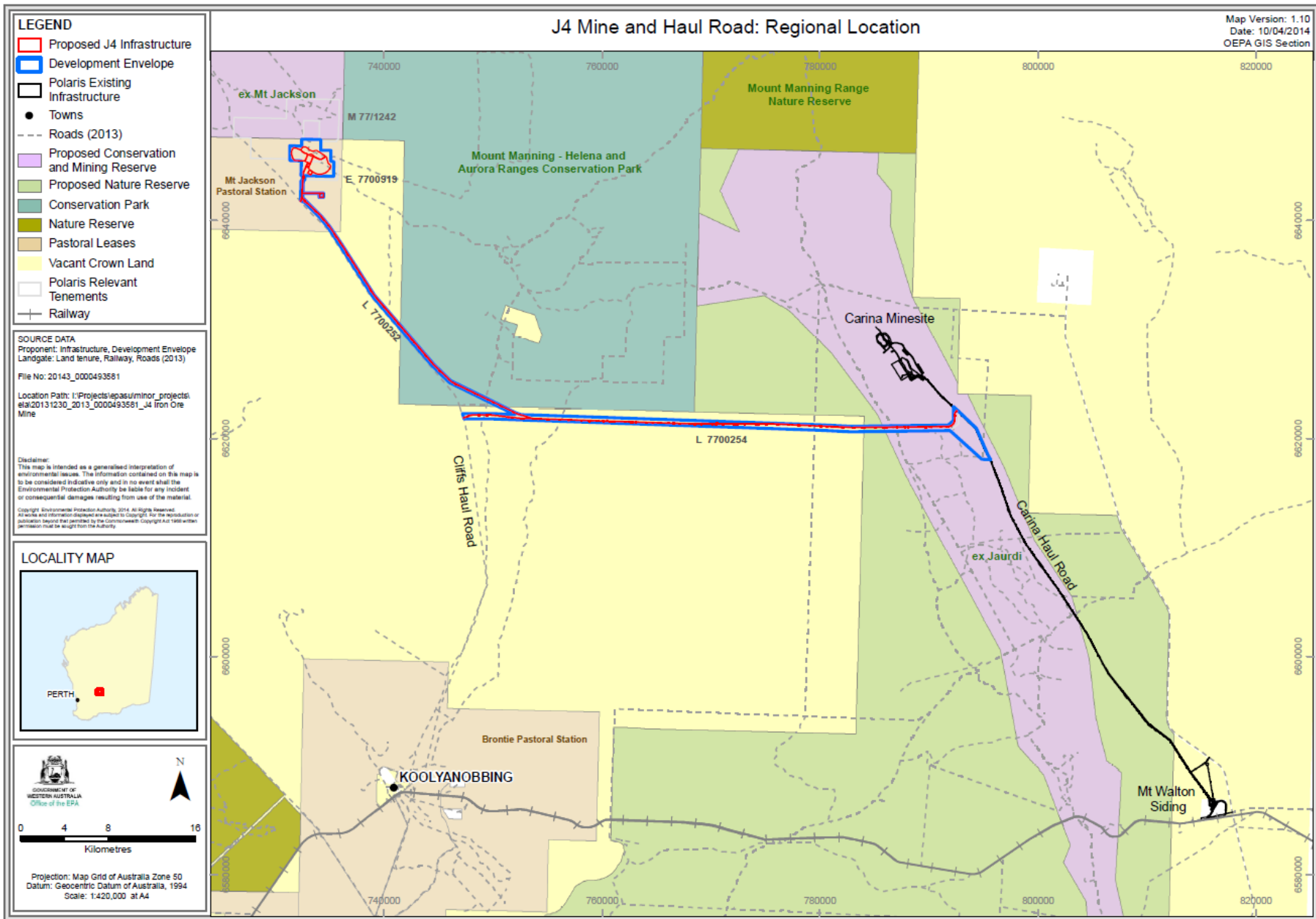


Figure 1: Proposal regional locality



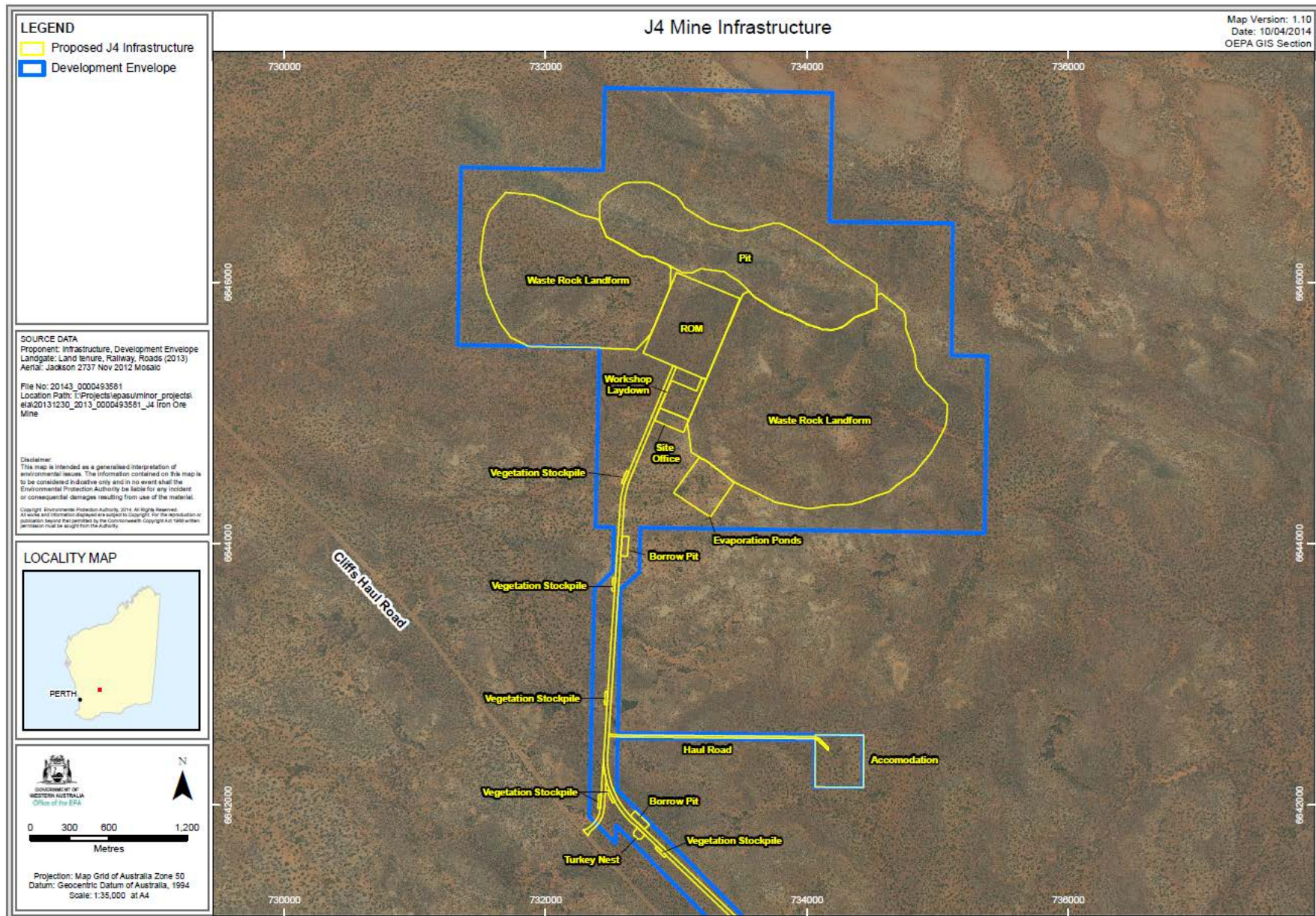


Figure 2: Mine and supporting infrastructure conceptual disturbance footprint and Development Envelope



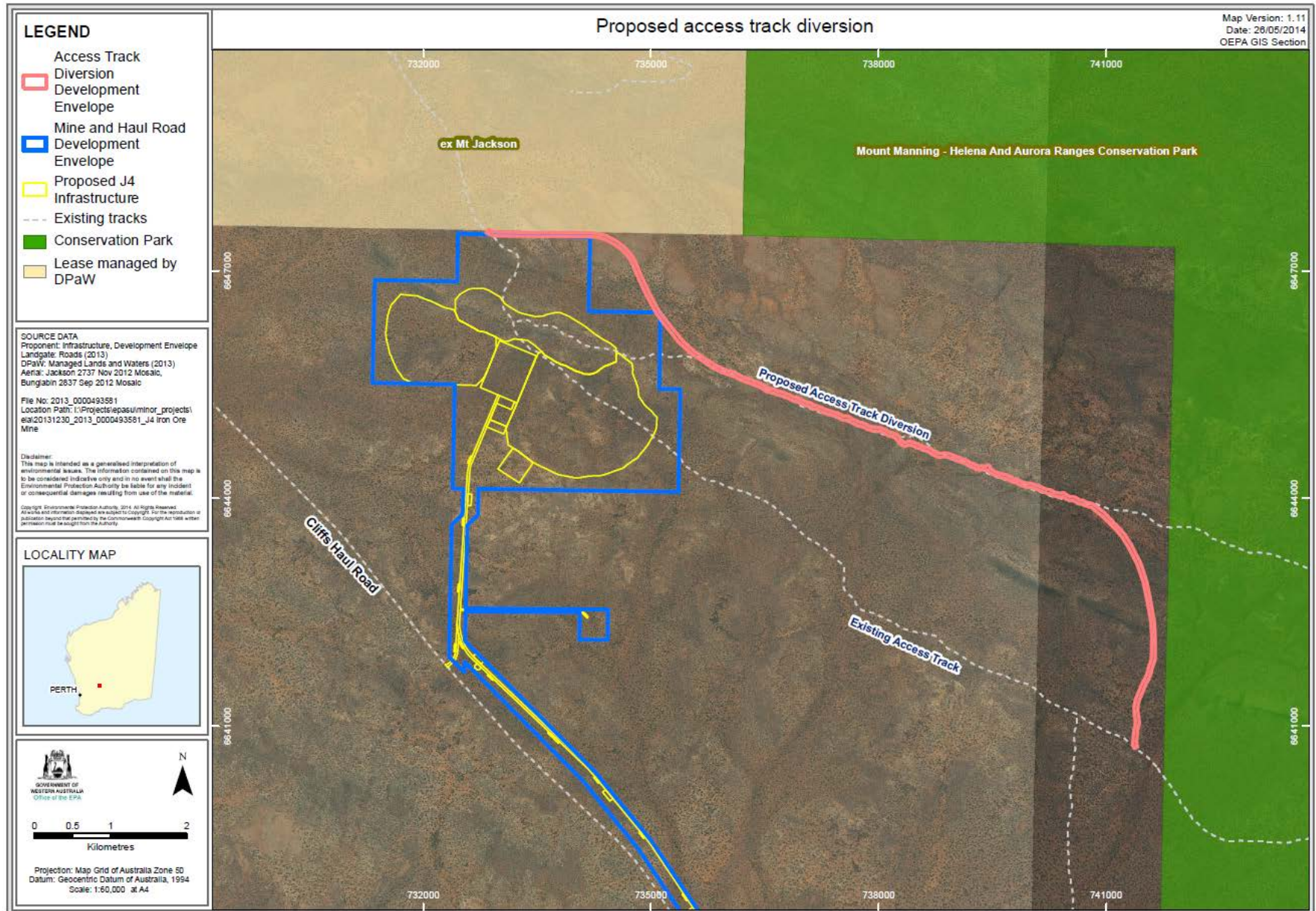


Figure 3: Development Envelope for the diversion of the access track



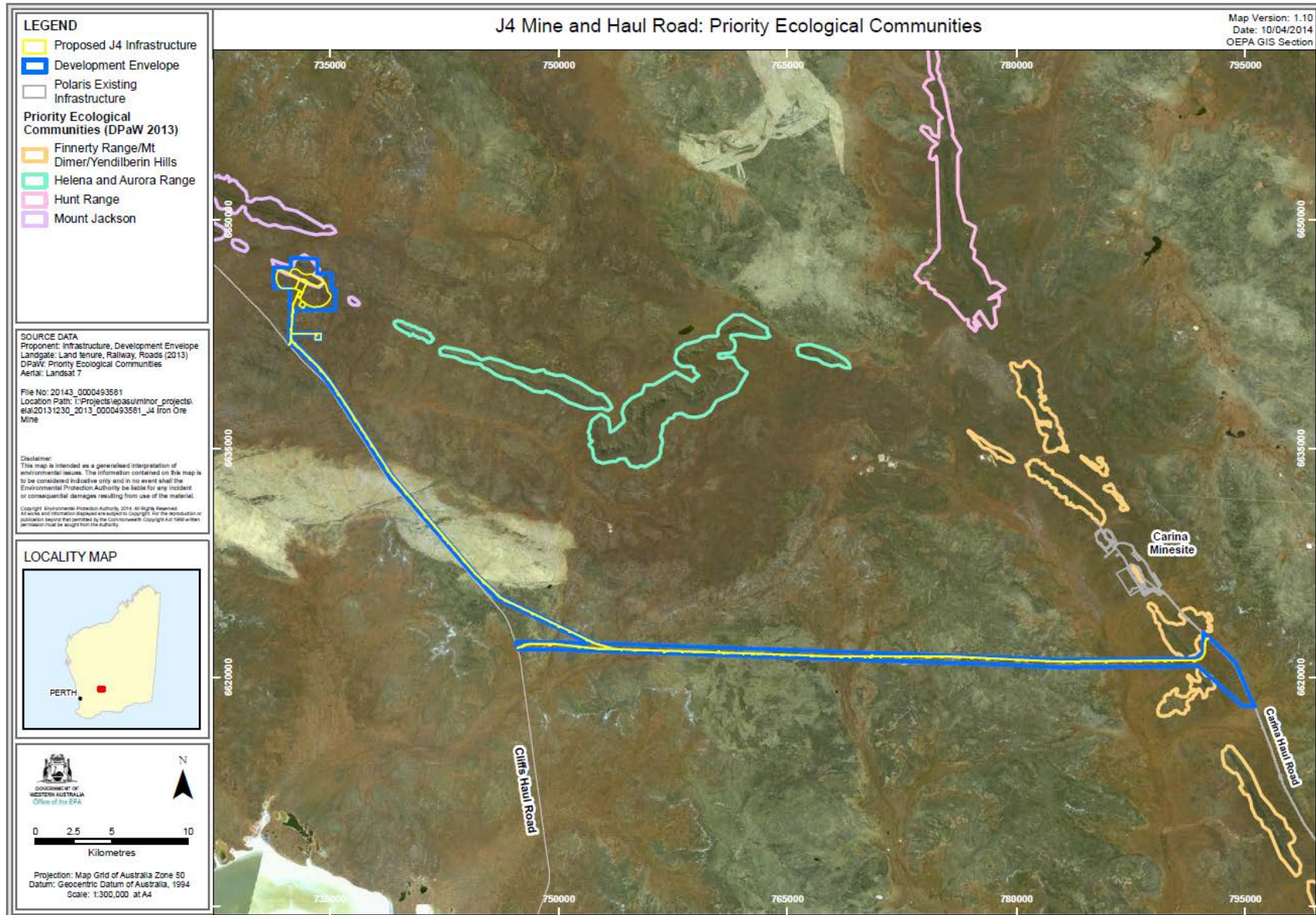


Figure 4: Department of Parks and Wildlife Priority Ecological Community (PEC) boundaries

Table 3: Abbreviations

Abbreviation	Term
CEO	The Chief Executive Officer of the Department of the Public Service of the State responsible for the administration of section 48 of the <i>Environmental Protection Act 1986</i> , or his delegate.
DoL	Department of Lands
Parks and Wildlife	Department of Parks and Wildlife
DRF	Declared Rare Flora – <i>Wildlife Conservation Act 1950</i>
EPA	Environmental Protection Authority
EP Act	<i>Environmental Protection Act 1986</i>
GS	Guidance Statement
ha	hectare
km	kilometre
m	metre
Priority flora	flora species on Parks and Wildlife Priority Flora List
Significant flora and vegetation	as defined in EPA Guidance Statement No. 51 – <i>Terrestrial Flora and Vegetation Surveys for Environmental Impact Assessment in Western Australia</i> , June 2004.
TEC	Threatened Ecological Community – <i>Wildlife Conservation Act 1950</i>

**JACKSON 4 (J4) IRON ORE MINE AND HAUL ROAD ON M77/1242, L77/250,  
L77/252, L77/254**

**Coordinates that define the Proposal Development Envelope**

Coordinates defining the mine, supporting infrastructure and haul road (proposal) Development Envelope as shown in Figure 1 of the Ministerial Statement are held by the Office of the EPA, dated 10 April 2014.

Jackson 4 mine, supporting infrastructure and haul road  
Development Envelope

**Easting (MGA94 z50) Northing (MGA94 z50)**

732382.52	6644125.88	732544.37	6642117.98	782829.17	6620639.33
732411.74	6645497.63	734250.32	6640399.98	779896.96	6620785.81
731325.39	6645520.68	735004.99	6639479.71	750000.00	6621800.00
731354.16	6646878.54	735988.85	6638010.06	747357.65	6621800.00
732440.64	6646855.46	739126.26	6633165.83	747185.05	6622298.90
732451.07	6647345.33	742206.24	6629559.02	750000.00	6622300.00
732454.07	6647486.63	743676.19	6627838.05	752000.00	6622200.00
732592.76	6647483.69	744344.58	6627055.50	752000.00	6622200.00
734196.37	6647449.44	744530.61	6626837.70	749566.45	6623407.63
734175.18	6646461.28	746114.61	6625308.20	745998.57	6625142.23
735115.73	6646448.75	749654.62	6623587.14	744384.70	6626700.58
735108.47	6645439.85	752081.73	6622382.71	743524.12	6627708.16
735384.34	6645433.91	752563.75	6622189.90	742054.15	6629429.14
735359.86	6644080.53	752563.75	6622189.90	738965.58	6633046.01
732724.13	6644120.68	754001.52	6622164.14	735821.80	6637900.07
732724.13	6644120.68	779912.84	6621284.39	734844.19	6639360.40
732717.55	6643776.71	782826.56	6621138.29	734101.65	6640265.87
732572.33	6643645.68	791751.40	6621218.07	732539.32	6641841.95
732552.23	6642547.21	792261.23	6621657.85	732539.32	6641841.95
732552.23	6642547.21	792249.10	6622950.46	732536.78	6641703.29
734429.58	6642532.44	792249.10	6622950.46	732335.30	6641906.16
734426.43	6642132.45	792766.86	6622464.53	732372.38	6643649.93
734055.01	6642135.37	794356.79	6620954.79	732514.10	6643788.27
734057.85	6642496.34	795431.40	6618485.26	732521.24	6644123.77
732551.51	6642508.20	795688.96	6618072.23	732382.52	6644125.88
732551.51	6642508.20	794851.78	6618095.11		
732544.37	6642117.98	791935.93	6620720.82		

## Coordinates that define the diversion of the Access Track Development Envelope

Coordinates defining the Development Envelope where the diversion of the access track will be constructed as shown in Figure 3 of the Ministerial Statement are held by the Office of the EPA, dated 21 May 2014.

### Access Track Development Envelope

#### Easting (MGA94 z50) Northing (MGA94 z50)

732983.45	6647507.86	735105.33	6646466.98	735996.97	6645689.13
733364.57	6647503.22	735236.46	6646293.39	736002.66	6645684.66
734093.62	6647503.26	735412.15	6646073.30	736006.48	6645680.62
734094.56	6647503.24	735573.28	6645930.48	736013.51	6645679.33
734219.53	6647498.56	735790.20	6645791.05	736015.60	6645678.86
734222.06	6647498.34	735790.35	6645790.88	736035.88	6645673.32
734281.83	6647489.97	735791.93	6645789.83	736036.61	6645673.11
734283.19	6647489.74	735806.61	6645778.53	736050.28	6645668.93
734335.12	6647479.55	735807.79	6645777.57	736050.80	6645668.76
734336.74	6647479.18	735819.58	6645767.29	736064.74	6645664.18
734384.42	6647466.47	735831.79	6645760.47	736077.05	6645660.29
734387.68	6647465.36	735846.37	6645754.89	736087.92	6645657.94
734434.33	6647445.76	735849.95	6645753.20	736100.70	6645655.75
734436.02	6647444.98	735850.33	6645752.97	736105.73	6645654.34
734479.86	6647422.60	735863.94	6645744.79	736116.03	6645650.24
734480.17	6647422.44	735870.72	6645740.89	736118.63	6645649.04
734529.61	6647396.31	735877.65	6645738.75	736129.38	6645643.26
734530.43	6647395.86	735878.77	6645738.38	736130.04	6645642.89
734531.35	6647395.30	735891.18	6645733.90	736131.02	6645642.30
734582.66	6647362.66	735892.53	6645733.37	736140.71	6645636.10
734585.25	6647360.78	735907.03	6645727.17	736141.02	6645635.90
734646.82	6647309.47	735908.43	6645726.52	736148.96	6645630.65
734648.92	6647307.52	735922.71	6645719.34	736158.56	6645625.90
734706.75	6647246.88	735923.98	6645718.66	736159.97	6645625.15
734708.63	6647244.68	735927.33	6645716.35	736160.26	6645624.98
734759.95	6647176.58	735938.43	6645707.27	736171.86	6645618.08
734761.64	6647174.04	735944.49	6645703.32	736173.46	6645617.04
734761.96	6647173.46	735952.91	6645701.52	736182.55	6645610.66
734791.81	6647118.42	735963.57	6645699.46	736192.26	6645606.71
734792.80	6647116.39	735979.16	6645696.60	736192.74	6645606.51
734884.99	6646902.21	735985.15	6645694.70	736204.48	6645601.45
734990.86	6646679.32	735994.97	6645690.16	736216.33	6645596.95

736217.02	6645596.68	736549.51	6645449.29	736920.60	6645325.81
736229.69	6645591.43	736561.18	6645451.28	736944.59	6645317.86
736242.28	6645587.35	736565.37	6645451.63	736945.57	6645317.51
736243.95	6645586.75	736576.85	6645448.86	736956.74	6645313.28
736256.98	6645581.48	736590.49	6645441.83	736958.98	6645312.31
736271.10	6645577.05	736607.54	6645437.56	736971.65	6645306.04
736286.28	6645572.46	736610.23	6645436.73	736972.31	6645305.70
736301.66	6645567.94	736621.88	6645432.38	736985.54	6645298.65
736317.92	6645563.16	736622.48	6645432.15	736998.16	6645291.99
736319.89	6645562.49	736646.26	6645422.57	737010.69	6645285.77
736335.93	6645556.27	736669.53	6645414.12	737011.17	6645285.52
736337.73	6645555.49	736676.99	6645412.95	737022.72	6645279.48
736353.75	6645547.79	736683.64	6645410.94	737046.43	6645269.36
736369.81	6645540.44	736689.71	6645408.12	737058.47	6645267.02
736385.49	6645534.52	736692.23	6645408.54	737072.43	6645264.54
736386.59	6645534.07	736696.30	6645408.87	737073.10	6645264.42
736400.60	6645528.00	736703.90	6645407.69	737087.00	6645261.56
736400.72	6645527.95	736717.00	6645403.52	737087.62	6645261.42
736412.45	6645522.81	736721.92	6645401.36	737101.80	6645258.12
736426.93	6645520.79	736723.63	6645400.28	737108.64	6645255.43
736436.00	6645517.70	736728.96	6645396.60	737110.86	6645253.99
736436.07	6645517.66	736743.44	6645392.40	737134.74	6645236.61
736445.58	6645512.13	736755.60	6645390.35	737135.60	6645235.96
736446.62	6645511.48	736761.39	6645388.65	737142.01	6645230.86
736456.87	6645504.82	736775.97	6645382.34	737148.60	6645228.38
736457.86	6645504.15	736778.55	6645381.05	737166.83	6645222.71
736466.29	6645498.09	736781.69	6645378.92	737184.96	6645218.64
736470.46	6645495.92	736791.33	6645371.21	737189.36	6645217.23
736480.83	6645495.26	736804.38	6645366.69	737199.94	6645212.68
736491.75	6645491.97	736814.01	6645364.48	737223.35	6645204.72
736496.18	6645488.73	736825.03	6645362.19	737224.60	6645204.26
736506.34	6645479.38	736832.46	6645359.37	737249.79	6645194.17
736512.01	6645474.45	736832.68	6645359.25	737252.99	6645192.62
736516.47	6645473.21	736843.60	6645352.80	737253.52	6645192.30
736522.27	6645470.79	736845.82	6645351.33	737276.54	6645178.25
736528.08	6645466.20	736860.92	6645340.10	737288.37	6645171.90
736535.89	6645457.82	736874.11	6645335.70	737298.45	6645167.49
736539.26	6645453.29	736881.38	6645335.16	737310.31	6645164.94
736539.94	6645452.02	736885.46	6645334.51	737310.54	6645164.89
736540.97	6645449.99	736907.30	6645329.16	737348.85	6645156.29
736541.53	6645449.77	736918.69	6645326.36	737355.39	6645153.84

737375.07	6645143.08	737761.34	6645000.47	738161.91	6644866.27
737385.00	6645140.93	737774.78	6644998.74	738171.71	6644865.10
737400.49	6645137.86	737780.70	6644997.24	738173.72	6644864.78
737401.82	6645137.56	737794.24	6644991.95	738184.73	6644862.55
737415.73	6645134.00	737795.20	6644991.56	738189.08	6644861.26
737439.37	6645129.51	737809.02	6644985.49	738200.81	6644856.56
737441.82	6645128.92	737835.84	6644974.63	738203.34	6644855.38
737453.10	6645125.58	737838.55	6644973.34	738228.75	6644841.74
737457.94	6645123.58	737850.25	6644966.87	738229.43	6644841.37
737469.51	6645117.30	737850.65	6644966.65	738231.88	6644839.76
737482.03	6645111.93	737852.71	6644965.33	738258.68	6644819.77
737483.28	6645111.36	737864.55	6644956.86	738262.98	6644815.71
737507.46	6645099.40	737864.65	6644956.79	738274.89	6644801.36
737508.88	6645098.65	737871.15	6644952.08	738275.82	6644800.17
737514.41	6645094.34	737883.78	6644948.99	738295.95	6644772.70
737522.13	6645086.31	737887.94	6644947.58	738319.27	6644749.88
737526.21	6645083.15	737897.30	6644943.44	738342.34	6644734.90
737531.45	6645081.77	737909.54	6644939.24	738356.16	6644738.50
737545.35	6645081.29	737929.34	6644939.80	738376.44	6644744.86
737561.69	6645081.15	737930.05	6644939.81	738381.03	6644745.83
737565.87	6645081.49	737931.78	6644939.75	738401.10	6644748.17
737570.51	6645084.01	737957.53	6644937.97	738404.00	6644748.34
737582.46	6645087.03	737960.68	6644937.55	738405.23	6644748.31
737594.98	6645083.69	737980.71	6644933.58	738417.44	6644747.71
737598.30	6645081.41	738000.29	6644932.95	738421.33	6644747.21
737605.69	6645075.39	738003.26	6644932.68	738432.64	6644744.85
737623.46	6645066.82	738021.50	6644929.91	738435.49	6644744.08
737625.10	6645065.96	738030.69	6644929.51	738454.94	6644737.55
737628.96	6645063.23	738042.15	6644926.21	738492.11	6644726.32
737638.95	6645054.60	738044.84	6644924.43	738494.29	6644725.55
737646.73	6645047.97	738056.72	6644915.34	738528.63	6644711.60
737672.63	6645035.44	738062.95	6644913.32	738528.87	6644711.51
737698.13	6645027.53	738088.64	6644907.45	738555.48	6644700.38
737703.23	6645025.32	738095.59	6644904.74	738557.44	6644699.47
737705.25	6645024.03	738100.46	6644901.08	738566.29	6644694.84
737727.24	6645008.36	738110.92	6644890.98	738566.64	6644694.64
737728.93	6645007.05	738111.19	6644890.73	738582.79	6644685.86
737733.03	6645003.57	738118.21	6644883.75	738603.33	6644679.47
737747.45	6645000.64	738124.65	6644879.90	738606.34	6644678.31
737758.07	6645000.68	738133.49	6644875.38	738615.89	6644673.92
737758.14	6645000.68	738141.69	6644871.54	738641.55	6644668.14



738655.69	6644665.09	738997.84	6644562.15	739412.16	6644419.99
738657.78	6644664.54	739007.05	6644556.74	739413.66	6644422.06
738671.73	6644660.24	739009.18	6644555.35	739421.45	6644429.07
738675.01	6644658.98	739015.50	6644550.71	739433.98	6644432.41
738687.39	6644653.16	739025.31	6644547.67	739436.03	6644432.32
738689.26	6644652.19	739025.55	6644547.59	739448.80	6644431.27
738691.90	6644650.44	739039.88	6644542.98	739459.28	6644428.02
738703.92	6644641.30	739054.41	6644538.50	739468.45	6644418.89
738704.32	6644641.00	739055.33	6644538.20	739471.76	6644407.96
738720.25	6644628.38	739083.32	6644528.39	739472.28	6644399.54
738730.02	6644621.68	739085.93	6644527.31	739473.62	6644395.31
738750.88	6644612.73	739109.35	6644515.98	739474.60	6644393.92
738753.38	6644611.50	739136.00	6644509.32	739479.64	6644391.06
738766.40	6644604.11	739141.96	6644507.00	739479.83	6644390.96
738766.55	6644604.02	739156.65	6644498.96	739484.97	6644387.05
738767.09	6644603.70	739170.01	6644492.53	739495.58	6644376.49
738777.03	6644597.63	739171.24	6644491.90	739501.38	6644371.72
738788.69	6644592.70	739197.01	6644477.70	739518.99	6644360.17
738794.68	6644592.24	739197.44	6644477.46	739530.12	6644353.62
738795.46	6644592.17	739198.49	6644476.82	739556.76	6644341.32
738808.19	6644590.80	739215.04	6644466.14	739587.19	6644332.62
738818.62	6644589.88	739225.09	6644462.30	739587.54	6644332.52
738840.40	6644592.76	739237.15	6644458.90	739616.51	6644323.78
738845.42	6644595.35	739239.14	6644458.25	739617.07	6644323.61
738856.90	6644598.12	739266.54	6644447.99	739630.38	6644319.24
738858.73	6644598.05	739270.28	6644446.24	739643.09	6644315.65
738880.25	6644596.47	739271.55	6644445.46	739671.43	6644310.67
738885.66	6644595.47	739285.12	6644436.52	739674.77	6644309.85
738905.06	6644589.62	739285.55	6644436.22	739689.58	6644305.09
738913.57	6644588.83	739297.12	6644428.24	739692.68	6644303.86
738913.77	6644588.81	739306.18	6644424.03	739706.01	6644297.51
738925.00	6644587.68	739316.17	6644422.55	739715.83	6644293.00
738930.47	6644586.51	739328.34	6644422.93	739725.89	6644290.31
738941.08	6644582.96	739350.84	6644427.70	739729.59	6644289.00
738945.63	6644580.92	739356.03	6644428.24	739742.17	6644283.40
738945.83	6644580.80	739361.25	6644427.69	739744.50	6644282.22
738956.15	6644574.71	739375.14	6644424.73	739747.29	6644280.36
738965.69	6644569.18	739375.92	6644424.55	739757.45	6644272.51
738978.66	6644566.24	739390.74	6644420.89	739776.59	6644262.45
738987.29	6644565.50	739400.28	6644418.97	739800.13	6644259.90
738997.67	6644562.25	739408.35	6644418.86	739808.80	6644257.33

739819.74	6644251.76	740219.19	6644117.53	740629.18	6643988.67
739820.24	6644251.51	740228.11	6644114.81	740641.71	6643981.57
739831.65	6644245.38	740242.30	6644111.70	740652.76	6643975.27
739832.32	6644245.01	740246.33	6644111.27	740659.04	6643972.79
739833.07	6644244.56	740268.56	6644106.34	740668.27	6643972.88
739844.42	6644237.48	740269.37	6644106.14	740668.51	6643972.88
739856.40	6644230.72	740279.71	6644103.48	740668.84	6643972.87
739882.74	6644218.39	740285.51	6644101.19	740682.03	6643972.69
739911.46	6644209.74	740295.21	6644095.87	740689.99	6643971.29
739921.65	6644206.79	740295.69	6644095.61	740707.17	6643965.26
739939.05	6644201.74	740297.15	6644094.70	740711.40	6643963.33
739944.02	6644199.70	740306.29	6644088.56	740714.06	6643961.56
739950.82	6644196.01	740325.20	6644078.24	740722.61	6643955.05
739954.42	6644195.19	740333.65	6644074.99	740728.77	6643950.83
739963.78	6644196.81	740344.18	6644072.82	740750.82	6643944.52
739968.03	6644197.17	740355.68	6644070.54	740750.90	6643944.50
739980.55	6644193.83	740379.07	6644066.64	740777.00	6643936.94
739981.89	6644192.92	740379.41	6644066.58	740777.29	6643936.86
739987.98	6644193.74	740386.25	6644065.34	740820.79	6643923.69
739988.78	6644193.72	740398.31	6644066.69	740826.06	6643921.42
740000.23	6644193.35	740414.95	6644069.62	740826.17	6643921.35
740004.71	6644192.80	740419.28	6644070.00	740838.99	6643913.86
740021.28	6644189.23	740420.51	6644069.97	740841.92	6643911.87
740023.15	6644188.76	740432.91	6644069.36	740851.79	6643904.05
740035.34	6644185.12	740444.20	6644066.05	740985.94	6643800.31
740048.24	6644181.58	740444.62	6644065.80	740988.75	6643797.79
740049.70	6644181.13	740468.85	6644051.18	741178.12	6643599.09
740065.36	6644175.79	740471.99	6644048.95	741179.21	6643597.87
740078.01	6644171.52	740488.37	6644035.23	741250.11	6643512.97
740092.13	6644167.17	740510.94	6644025.60	741252.26	6643509.99
740108.84	6644162.45	740511.31	6644025.43	741337.15	6643371.00
740111.91	6644161.36	740520.39	6644021.38	741337.47	6643370.47
740126.88	6644154.93	740549.40	6644019.29	741338.08	6643369.36
740128.13	6644154.36	740551.96	6644018.98	741455.27	6643140.34
740141.59	6644147.68	740577.08	6644014.55	741456.79	6643136.71
740153.73	6644142.18	740580.74	6644013.62	741537.95	6642887.63
740165.34	6644138.19	740590.95	6644010.17	741538.68	6642884.85
740176.43	6644134.72	740593.51	6644009.15	741595.59	6642604.06
740178.31	6644134.06	740614.75	6643999.26	741595.73	6642603.33
740201.68	6644124.67	740616.71	6643998.25	741636.77	6642364.51
740201.80	6644124.62	740619.81	6643996.14	741637.10	6642361.54

741647.37	6642157.24	741416.33	6641240.13	741368.61	6640704.14
741647.40	6642155.99	741413.49	6641234.68	741368.25	6640704.79
741647.40	6642155.83	741415.16	6641219.37	741360.86	6640718.82
741645.75	6641894.12	741415.17	6641219.17	741360.32	6640719.90
741645.73	6641894.06	741417.46	6641196.49	741355.10	6640731.11
741645.44	6641890.39	741417.57	6641194.99	741353.40	6640736.00
741640.74	6641860.66	741419.35	6641150.29	741350.93	6640746.60
741639.27	6641855.34	741424.09	6641127.46	741350.28	6640752.02
741631.32	6641835.34	741428.52	6641110.88	741350.08	6640773.42
741626.64	6641815.09	741429.21	6641107.18	741350.08	6640773.65
741625.53	6641811.55	741431.21	6641089.06	741350.16	6640775.68
741616.23	6641788.00	741431.37	6641086.32	741352.66	6640806.27
741607.75	6641760.06	741431.37	6641086.26	741354.21	6640829.32
741600.38	6641734.48	741431.34	6641072.68	741355.06	6640859.87
741594.30	6641703.48	741433.32	6641051.17	741355.27	6640862.40
741593.23	6641699.68	741433.43	6641048.88	741358.73	6640888.97
741578.38	6641659.30	741433.39	6641047.49	741363.02	6640923.47
741578.19	6641658.80	741431.80	6641019.24	741365.82	6640950.56
741569.73	6641637.25	741431.59	6641017.17	741366.32	6640953.59
741568.81	6641635.21	741427.94	6640991.19	741368.98	6640965.18
741558.78	6641615.12	741427.40	6640988.47	741369.55	6640967.22
741557.69	6641608.18	741421.29	6640964.64	741372.92	6640977.72
741554.64	6641599.58	741420.87	6640963.20	741378.51	6640999.47
741553.45	6641597.74	741417.60	6640953.00	741381.82	6641023.07
741542.14	6641581.61	741415.51	6640943.94	741383.25	6641048.43
741529.22	6641560.96	741412.85	6640918.11	741381.33	6641069.27
741521.42	6641544.93	741412.79	6640917.60	741381.22	6641071.56
741509.76	6641512.39	741408.46	6640882.76	741381.22	6641071.62
741508.68	6641509.85	741408.44	6640882.60	741381.25	6641084.98
741496.34	6641484.61	741405.12	6640857.21	741379.60	6641099.85
741485.11	6641461.33	741404.29	6640827.44	741375.48	6641115.29
741475.06	6641437.95	741404.24	6640826.48	741375.16	6641116.66
741474.78	6641437.34	741402.66	6640802.77	741369.86	6641142.19
741465.92	6641418.17	741402.63	6640802.40	741369.35	6641146.26
741460.48	6641397.44	741400.21	6640772.75	741367.52	6641192.26
741459.31	6641394.04	741400.37	6640755.20	741365.33	6641214.08
741438.00	6641343.73	741401.63	6640749.80	741362.86	6641236.77
741430.38	6641317.06	741405.51	6640741.48	741362.71	6641239.47
741422.98	6641291.14	741412.45	6640728.31	741365.53	6641250.97
741420.72	6641268.37	741415.54	6640722.83	741369.57	6641258.72
741419.06	6641249.45	741372.02	6640698.10	741370.81	6641272.86

741370.84	6641273.13	741546.39	6642594.54	740424.11	6644019.87
741373.32	6641298.25	741489.85	6642873.57	740420.87	6644020.02
741374.16	6641302.65	741409.74	6643119.42	740406.23	6644017.45
741382.19	6641330.76	741293.87	6643345.86	740404.69	6644017.23
741390.22	6641358.86	741210.43	6643482.48	740388.19	6644015.38
741391.25	6641361.74	741141.24	6643565.32	740385.39	6644015.22
741412.45	6641411.81	740953.73	6643762.06	740380.93	6644015.62
741418.00	6641432.93	740820.96	6643864.73	740370.63	6644017.48
741419.50	6641437.06	740820.72	6643864.92	740347.04	6644021.42
741429.13	6641457.90	740812.13	6643871.73	740346.30	6644021.56
741439.26	6641481.49	740803.41	6643876.83	740334.33	6644023.93
741439.71	6641482.48	740762.89	6643889.10	740334.13	6644023.97
741451.21	6641506.29	740736.96	6643896.61	740321.48	6644026.58
741451.27	6641506.40	740711.02	6643904.03	740317.55	6644027.73
741463.03	6641530.47	740705.39	6643906.40	740305.61	6644032.32
741474.69	6641562.99	740703.76	6643907.43	740302.61	6644033.70
741475.75	6641565.49	740693.71	6643914.31	740281.22	6644045.36
741484.72	6641583.93	740692.68	6643915.05	740280.70	6644045.65
741485.54	6641585.49	740686.79	6643919.54	740279.24	6644046.56
741486.01	6641586.25	740677.24	6643922.89	740270.07	6644052.73
741499.98	6641608.56	740668.45	6643923.01	740264.13	6644055.98
741500.70	6641609.64	740654.59	6643922.88	740257.27	6644057.75
741509.07	6641621.59	740654.36	6643922.88	740243.44	6644060.82
741509.86	6641626.64	740645.14	6643924.63	740240.69	6644059.63
741512.20	6641633.92	740632.65	6643929.57	740230.71	6644057.56
741523.47	6641656.46	740629.46	6643931.09	740218.18	6644060.90
741531.42	6641676.73	740616.91	6643938.24	740211.26	6644067.80
741545.50	6641715.01	740602.70	6643946.29	740203.45	6644070.18
741551.41	6641745.12	740602.53	6643946.39	740201.30	6644070.94
741551.92	6641747.21	740599.43	6643948.49	740182.90	6644078.44
741559.63	6641774.00	740590.85	6643955.34	740160.52	6644087.43
741559.73	6641774.34	740573.58	6643963.38	740150.04	6644090.71
741568.56	6641803.42	740566.47	6643965.78	740149.36	6644090.93
741569.23	6641805.34	740544.50	6643969.65	740136.27	6644095.42
741578.22	6641828.11	740512.37	6643971.97	740134.07	6644096.29
741582.91	6641848.39	740503.96	6643974.07	740120.45	6644102.47
741584.04	6641851.98	740491.04	6643979.83	740119.65	6644102.84
741591.66	6641871.15	740465.25	6643990.84	740106.43	6644109.41
741595.64	6641896.31	740462.56	6643992.18	740093.61	6644114.92
741597.28	6642155.45	740459.00	6643994.66	740078.19	6644119.27
741587.13	6642357.56	740441.25	6644009.52	740077.62	6644119.44

740062.90	6644123.98	739684.87	6644252.31	739311.03	6644372.89
740062.26	6644124.18	739684.56	6644252.45	739295.20	6644375.24
740049.20	6644128.60	739672.61	6644258.14	739288.32	6644377.29
740034.22	6644133.70	739661.04	6644261.86	739274.03	6644383.93
740021.79	6644137.11	739633.14	6644266.76	739272.06	6644384.95
740021.25	6644137.26	739630.64	6644267.33	739270.36	6644386.03
740009.72	6644140.71	739616.20	6644271.42	739257.25	6644395.06
739996.33	6644143.59	739615.23	6644271.71	739246.28	6644402.31
739990.97	6644143.76	739601.72	6644276.14	739222.51	6644411.20
739982.99	6644141.58	739573.20	6644284.74	739210.37	6644414.63
739976.36	6644140.69	739541.08	6644293.93	739208.22	6644415.34
739963.83	6644144.02	739537.48	6644295.26	739194.67	6644420.52
739961.25	6644145.77	739507.94	6644308.89	739191.08	6644422.21
739957.98	6644145.20	739505.92	6644309.93	739190.03	6644422.85
739953.73	6644144.84	739505.73	6644310.04	739172.01	6644434.48
739948.17	6644145.46	739493.00	6644317.53	739147.61	6644447.92
739936.30	6644148.16	739491.97	6644318.17	739134.28	6644454.34
739929.90	6644150.57	739472.72	6644330.80	739133.11	6644454.94
739922.44	6644154.62	739470.53	6644332.39	739120.69	6644461.74
739907.68	6644158.90	739462.78	6644338.77	739094.66	6644468.24
739897.35	6644161.90	739461.03	6644340.34	739089.82	6644469.98
739897.11	6644161.97	739451.97	6644349.36	739065.35	6644481.82
739866.51	6644171.18	739444.98	6644353.32	739039.16	6644491.00
739863.12	6644172.47	739444.80	6644353.42	739024.94	6644495.39
739834.26	6644185.98	739436.85	6644360.64	739024.65	6644495.48
739832.57	6644186.84	739430.41	6644369.77	739010.31	6644500.09
739819.27	6644194.33	739429.18	6644371.68	738996.60	6644504.34
739819.04	6644194.46	739428.67	6644372.85	738991.50	6644506.56
739818.29	6644194.91	739418.95	6644369.97	738989.21	6644508.05
739807.17	6644201.87	739411.83	6644368.94	738980.52	6644514.42
739796.72	6644207.47	739411.48	6644368.95	738977.32	6644516.30
739790.14	6644210.82	739397.24	6644369.15	738972.63	6644516.70
739766.43	6644213.39	739392.64	6644369.63	738969.23	6644517.23
739757.46	6644216.11	739380.28	6644372.12	738950.84	6644521.41
739732.15	6644229.42	739379.23	6644372.36	738943.86	6644524.13
739731.28	6644229.89	739364.28	6644376.05	738943.83	6644524.15
739728.50	6644231.75	739356.01	6644377.81	738930.90	6644531.64
739718.99	6644239.09	739336.55	6644373.69	738930.73	6644531.74
739710.97	6644242.65	739332.17	6644373.17	738922.60	6644536.53
739700.76	6644245.39	739315.51	6644372.64	738917.16	6644538.35
739696.77	6644246.83	739314.71	6644372.62	738908.85	6644539.19

738897.92	6644540.20	738420.92	6644696.35	737997.19	6644883.16
738892.98	6644541.16	738413.00	6644698.00	737977.05	6644883.81
738873.81	6644546.94	738404.85	6644698.40	737972.97	6644884.27
738862.13	6644547.80	738389.21	6644696.58	737952.47	6644888.33
738859.52	6644546.45	738370.59	6644690.74	737929.54	6644889.92
738851.32	6644543.90	738369.41	6644690.41	737906.39	6644889.26
738822.46	6644540.09	738344.24	6644683.86	737905.69	6644889.25
738819.18	6644539.87	738337.93	6644683.06	737897.54	6644890.61
738816.98	6644539.97	738325.41	6644686.39	737879.97	6644896.65
738803.54	6644541.15	738324.29	6644687.08	737877.99	6644897.42
738803.05	6644541.20	738289.84	6644709.46	737869.68	6644901.09
738790.46	6644542.56	738285.98	6644712.54	737854.43	6644904.83
738780.78	6644543.30	738259.40	6644738.52	737847.87	6644907.45
738772.93	6644545.19	738256.70	6644741.61	737845.71	6644908.84
738755.77	6644552.44	738235.80	6644770.14	737835.29	6644916.38
738753.00	6644553.81	738226.28	6644781.62	737824.69	6644923.97
738752.46	6644554.13	738203.36	6644798.72	737815.58	6644929.00
738741.26	6644560.97	738180.83	6644810.81	737789.83	6644939.43
738729.81	6644567.47	738172.53	6644814.14	737789.17	6644939.70
738707.96	6644576.84	738164.75	6644815.71	737775.50	6644945.70
738705.31	6644578.16	738154.27	6644816.96	737765.31	6644949.68
738703.66	6644579.20	738150.90	6644817.59	737756.57	6644950.81
738691.14	6644587.78	738126.78	6644823.88	737745.03	6644950.77
738689.76	6644588.79	738122.48	6644825.43	737744.96	6644950.77
738673.35	6644601.80	738111.81	6644830.43	737739.98	6644951.27
738663.64	6644609.18	738111.05	6644830.80	737716.69	6644955.99
738655.25	6644613.12	738101.05	6644835.89	737709.15	6644958.83
738644.03	6644616.58	738099.92	6644836.50	737705.44	6644961.43
738630.84	6644619.42	738099.55	6644836.72	737697.24	6644968.41
738630.62	6644619.47	738089.77	6644842.59	737679.40	6644981.11
738602.27	6644625.86	738085.00	6644846.28	737655.94	6644988.38
738597.31	6644627.54	738075.95	6644855.28	737652.45	6644989.75
738586.83	6644632.36	738070.64	6644860.40	737621.97	6645004.50
738565.48	6644639.00	738050.66	6644864.97	737620.36	6645005.35
738560.96	6644640.91	738048.51	6644865.56	737616.64	6645007.96
738542.83	6644650.77	738037.14	6644869.25	737606.35	6645016.73
738535.12	6644654.81	738032.35	6644871.37	737606.21	6645016.85
738509.62	6644665.47	738029.66	6644873.15	737598.66	6645023.37
738476.47	6644678.94	738020.65	6644880.03	737581.23	6645031.77
738440.05	6644689.94	738017.99	6644880.15	737579.58	6645032.63
738439.32	6644690.17	738015.29	6644880.41	737578.69	6645033.24

737575.25	6645032.23	737152.87	6645174.80	736752.95	6645337.93
737564.65	6645031.36	737132.98	6645181.00	736744.25	6645341.69
737562.60	6645031.27	737131.62	6645181.46	736733.67	6645343.47
737562.38	6645031.27	737120.65	6645185.58	736730.84	6645344.11
737544.58	6645031.43	737116.93	6645187.33	736711.04	6645349.86
737543.93	6645031.45	737113.85	6645189.42	736705.50	6645352.21
737526.90	6645032.04	737104.77	6645196.65	736703.80	6645353.29
737521.41	6645032.84	737085.45	6645210.71	736698.19	6645357.16
737508.50	6645036.23	737076.55	6645212.79	736694.42	6645358.36
737502.33	6645038.75	737063.31	6645215.51	736690.23	6645357.66
737499.50	6645040.64	737049.49	6645217.97	736686.16	6645357.33
737489.94	6645048.06	737049.10	6645218.04	736675.62	6645359.64
737487.23	6645050.48	737034.24	6645220.92	736665.73	6645364.23
737481.28	6645056.67	737029.16	6645222.47	736659.34	6645365.23
737461.63	6645066.38	737002.08	6645234.03	736654.67	6645366.43
737448.67	6645071.94	737000.31	6645234.87	736628.69	6645375.86
737446.57	6645072.95	736988.12	6645241.25	736627.89	6645376.17
737436.29	6645078.52	736975.56	6645247.48	736604.01	6645385.80
737428.75	6645080.76	736975.01	6645247.76	736593.99	6645389.54
737405.58	6645085.16	736962.06	6645254.59	736575.47	6645394.17
737404.03	6645085.50	736961.97	6645254.64	736570.07	6645396.19
737390.03	6645089.09	736949.04	6645261.54	736561.31	6645400.71
737375.01	6645092.07	736937.81	6645267.10	736555.08	6645399.65
737374.60	6645092.16	736928.27	6645270.71	736550.89	6645399.30
737360.90	6645095.12	736905.74	6645278.18	736549.39	6645399.35
737354.17	6645097.61	736895.35	6645280.73	736534.68	6645400.23
737334.41	6645108.42	736875.53	6645285.59	736527.24	6645401.82
737299.67	6645116.22	736867.24	6645286.21	736513.98	6645406.88
737285.43	6645119.27	736861.20	6645287.42	736510.38	6645408.58
737280.64	6645120.81	736841.23	6645294.07	736501.20	6645417.71
737267.30	6645126.64	736836.62	6645296.13	736500.52	6645418.98
737265.47	6645127.52	736834.19	6645297.72	736496.74	6645426.48
737252.14	6645134.69	736816.93	6645310.56	736496.18	6645427.08
737251.49	6645135.05	736810.74	6645314.22	736493.08	6645427.95
737250.97	6645135.37	736803.54	6645315.71	736487.28	6645430.37
737229.16	6645148.68	736803.04	6645315.82	736483.37	6645433.14
737206.55	6645157.74	736791.83	6645318.39	736473.16	6645442.01
737182.84	6645165.80	736789.22	6645319.14	736472.63	6645442.48
737181.02	6645166.49	736770.79	6645325.52	736468.74	6645446.07
737171.69	6645170.50	736766.46	6645327.48	736461.95	6645446.50
737154.84	6645174.29	736763.33	6645329.61	736452.00	6645449.26

736441.53	6645454.70	736089.60	6645607.05	735544.51	6645889.61
736440.56	6645455.23	736078.89	6645608.89	735541.44	6645891.93
736438.45	6645456.59	736077.85	6645609.09	735377.25	6646037.46
736429.03	6645463.36	736065.30	6645611.80	735374.29	6646040.56
736419.80	6645469.36	736063.03	6645612.40	735197.04	6646262.58
736415.10	6645472.09	736049.46	6645616.69	735196.63	6646263.11
736402.07	6645473.90	736049.17	6645616.79	735064.16	6646438.50
736395.46	6645475.77	736035.34	6645621.33	735062.45	6646441.06
736380.60	6645482.29	736022.29	6645625.32	735062.10	6646441.70
736367.18	6645488.10	736003.41	6645630.48	734946.43	6646656.26
736351.27	6645494.11	735989.34	6645633.05	734945.85	6646657.39
736349.71	6645494.76	735981.33	6645635.98	734839.50	6646881.28
736332.65	6645502.56	735975.64	6645640.45	734839.12	6646882.12
736332.21	6645502.77	735969.50	6645646.96	734747.20	6647095.68
736316.85	6645510.15	735966.96	6645648.13	734718.77	6647148.10
736302.71	6645515.64	735954.38	6645650.44	734669.45	6647213.56
736287.50	6645520.11	735954.16	6645650.49	734613.60	6647272.12
736272.03	6645524.65	735943.13	6645652.62	734554.36	6647321.48
736271.83	6645524.71	735942.64	6645652.72	734505.26	6647352.72
736256.43	6645529.37	735929.42	6645655.55	734456.87	6647378.29
736256.20	6645529.45	735922.14	6645658.33	734414.02	6647400.17
736240.99	6645534.22	735920.99	6645659.03	734369.82	6647418.74
736239.09	6645534.89	735909.89	6645666.25	734324.61	6647430.79
736225.95	6645540.20	735907.68	6645667.86	734274.18	6647440.68
736213.26	6645544.32	735897.67	6645676.06	734216.36	6647448.78
736211.40	6645545.00	735886.57	6645681.64	734093.15	6647453.39
736198.16	6645550.48	735873.45	6645687.25	733364.41	6647453.35
736186.14	6645555.05	735862.27	6645691.29	733364.11	6647453.36
736185.11	6645555.46	735853.22	6645694.08	732981.62	6647458.02
736173.11	6645560.63	735848.11	6645696.30	732979.20	6647458.16
736160.99	6645565.56	735848.08	6645696.31	732919.50	6647464.70
736157.90	6645567.06	735838.67	6645701.73	732916.55	6647465.20
736156.00	6645568.26	735838.28	6645701.96	732876.44	6647474.53
736145.35	6645575.75	735826.36	6645709.12	732870.48	6647476.74
736135.43	6645581.66	735812.15	6645714.56	732826.81	6647499.64
736125.30	6645586.67	735808.85	6645716.08	732825.92	6647500.12
736123.88	6645587.42	735792.78	6645725.08	732850.08	6647543.79
736122.60	6645588.21	735792.50	6645725.24	732890.95	6647522.36
736113.50	6645594.22	735788.56	6645728.04	732926.47	6647514.10
736104.77	6645599.81	735775.39	6645739.52	732983.45	6647507.86
736096.12	6645604.46	735762.15	6645749.71		



## Notes

The following notes are provided for information and do not form a part of the implementation conditions of the Statement:

- The proponent for the time being nominated by the Minister for Environment under section 38(6) of the EP Act is responsible for the implementation of the proposal unless and until that nomination has been revoked and another person is nominated.
- If the person nominated by the Minister, ceases to have responsibility for the proposal, that person is required to provide written notice to the EPA of its intention to relinquish responsibility for the proposal and the name of the person to whom responsibility for the proposal will pass or has passed. The Minister for Environment may revoke a nomination made under section 38(6) of the EP Act and nominate another person.
- To initiate a change of proponent, the nominated proponent and proposed proponent are required to complete and submit *Post Assessment Form 1 – Application to Change Nominated Proponent*.
- The General Manager of the Office of the EPA was the CEO of the Department of the Public Service of the State responsible for the administration of section 48 of the EP Act at the time the Statement was signed by the Minister for Environment.