

**THIS DOCUMENT**

This document has been produced by the Office of the Appeals Convenor as an electronic version of the original Statement for the proposal listed below as signed by the Minister and held by this Office. Whilst every effort is made to ensure its accuracy, no warranty is given as to the accuracy or completeness of this document.

The State of Western Australia and its agents and employees disclaim liability, whether in negligence or otherwise, for any loss or damage resulting from reliance on the accuracy or completeness of this document. Copyright in this document is reserved to the Crown in right of the State of Western Australia. Reproduction except in accordance with copyright law is prohibited.

Published on: 18 October 2012

Statement No. 914

**STATEMENT THAT A PROPOSAL MAY BE IMPLEMENTED  
(PURSUANT TO THE PROVISIONS OF THE  
ENVIRONMENTAL PROTECTION ACT 1986)**

**YANDICOOGINA IRON ORE PROJECT – EXPANSION TO INCLUDE JUNCTION SOUTH  
WEST AND OXBOW DEPOSITS**

**Proposal:**

The proposal includes the existing Hamersley Yandicoogina iron ore project and proposed expansion. The existing project includes open pit mining at the Junction Central and Junction South East operations and associated infrastructure, dewatering activities, closure and rehabilitation. The expansion includes the development of new pits at Junction South West and Oxbow, temporary waste landforms, the development of new infrastructure, additional dewatering and water disposal activities. The proposal is located in the central Pilbara region of Western Australia, on mining lease 274SA.

The proposal is further documented in Schedule 1 of this statement.

**Proponent:**

Hamersley Iron Pty. Limited

**Proponent Address:**

Level 22  
Central Park 152-158 St Georges Terrace,  
PERTH WA 6000

**Assessment Number:** 1726

**Previous Assessment Numbers:** 979, 1174, 1590

**Report of the Environmental Protection Authority:** 1448

**Previous Reports of the Environmental Protection Authority:** 809, 946, 1195

**Previous Statement Numbers:** 417, 523, 695 (Published on 25 May 1996, 1 October 1999, 25 October 2005 respectively).

The implementation conditions of this statement supersede the implementation conditions of Statements 417, 523 and 695 in accordance with section 45B of the *Environmental Protection Act 1986*. The proposal referred to in the above reports of the Environmental Protection Authority may be implemented. The implementation of these proposals is subject to the following implementation conditions and procedures, unless specifically stated otherwise within this Statement and Schedule 2 details definitions of terms and phrases used in the implementation conditions and procedures.

## **Proposal Implementation**

- 1-1 When implementing the proposal, the proponent shall not exceed the authorised extent of the proposal as defined in Column 3 of table 2 in Schedule 1, unless amendments to the proposal and the authorised extent of the Proposal has been approved under the EP Act.

## **Contact Details**

- 2-1 The proponent shall notify the CEO of any change of its name, physical address or postal address for the serving of notices or other correspondence within 28 days of such change. Where the proponent is a corporation or an association of persons, whether incorporated or not, the postal address is that of the principal place of business or of the principal office in the State.

## **Time Limit for Proposal Implementation**

- 3-1 The proponent shall not commence implementation of the proposal after the expiration of five years from the date of this statement, and any commencement, within this five year period, must be substantial.
- 3-2 Any commencement of implementation of the proposal, within five years from the date of this statement, must be demonstrated as substantial by providing the CEO with written evidence, on or before the expiration of five years from the date of this statement.

## **Compliance Reporting**

- 4-1 The proponent shall prepare and maintain a compliance assessment plan to the satisfaction of the CEO.
- 4-2 The proponent shall submit to the CEO the compliance assessment plan required by condition 4-1 at least six months prior to the first compliance report required by condition 4-6, or prior to implementation, whichever is sooner.

The compliance assessment plan shall indicate:

- (1) the frequency of compliance reporting;
  - (2) the approach and timing of compliance assessments;
  - (3) the retention of compliance assessments;
  - (4) the method of reporting of potential non-compliances and corrective actions taken;
  - (5) the table of contents of compliance assessment reports; and
  - (6) public availability of compliance assessment reports.
- 4-3 The proponent shall assess compliance with conditions in accordance with the compliance assessment plan required by condition 4-1.

- 4-4 The proponent shall retain reports of all compliance assessments described in the compliance assessment plan required by condition 4-1 and shall make those reports available when requested by the CEO.
- 4-5 The proponent shall advise the CEO of any potential non-compliance within seven days of that non-compliance being known.
- 4-6 The proponent shall submit to the CEO a compliance assessment report by the end of April each year addressing compliance in the previous calendar year. The first compliance assessment report must be submitted by 30 April 2013 addressing compliance for the period from the date of issue of this statement, notwithstanding that the first reporting may be less than 12 months.

The compliance assessment report shall:

- (1) be endorsed by the proponent's Managing Director / General Manager / Chief Executive Officer or a person delegated to sign on the Managing Director's / General Manager's / Chief Executive Officer's behalf;
- (2) include a statement as to whether the proponent has complied with the conditions;
- (3) identify all potential non-compliances and describe corrective and preventative actions taken;
- (4) be made publicly available in accordance with the approved compliance assessment plan; and
- (5) indicate any proposed changes to the compliance assessment plan required by condition 4-1.

#### **Public Availability of Data**

- 5-1 Subject to condition 5-2, within six months of the issue of this statement and for the remainder of the life of the proposal the proponent shall make publicly available, in a manner approved by the CEO, all validated environmental data (including sampling design, sampling methodologies, empirical data and derived information products [e.g. maps]) relevant to the assessment of this proposal and implementation of this statement.
- 5-2 If any data referred to in condition 5-1 contains particulars of:
- (1) a secret formula or process; or
  - (2) confidential commercially sensitive information

The proponent may submit a request for approval from the CEO to not make this data publically available. In making such a request the Proponent shall provide the CEO with an explanation and reasons why the data should not be made publically available.

#### **Surface Water Discharge (Protection of Weeli Wolli Creek)**

- 6-1 The proponent shall ensure that the discharge of excess water from the Yandicoogina Iron Ore Project – Expansion to Include Junction SouthWest and Oxbow Deposits as a result of mining does not cause long term impacts to environmental values of the Weeli Wolli Creek System.

- 6-2 To verify that condition 6-1 is being met, the proponent shall develop an Environmental Values Statement for the Weeli Wolli Creek System that defines the environmental values of the Weeli Wolli Creek System to the satisfaction of the CEO in consultation with the DEC.
- 6-3 The proponent shall ensure that dewatering discharge from the Yandicoogina Iron Ore Project – Expansion to Include Junction South West and Oxbow Deposits does not cause water flow or pooling further than 17 kilometres downstream from the Marillana Creek and Weeli Wolli Creek System Confluence.
- 6-4 The proponent shall ensure that any dewater discharged to the environment does not exceed whichever is greater of the following:
- (1) the default trigger for the protection of marine and freshwater ecosystems as per the Australian and New Zealand Environmental and Conservation Council and Agriculture and Resource Management Council of Australia and New Zealand (ANZECC/ARMCANZ (2000)) *Australian Water Quality Guidelines for Fresh and Marine Waters* and its updates; or
  - (2) baseline levels identified pursuant to condition 6-6(3).
- 6-5 The proponent shall prepare a Water Discharge Monitoring and Management Plan.
- 6-6 The Water Discharge Monitoring and Management Plan required pursuant to condition 6-5 shall:
- (1) when implemented, require the proponent to monitor to substantiate whether condition 6-1, 6-3 and 6-4 are being met;
  - (2) when implemented, require the proponent to manage the implementation of the proposal to meet the requirements of condition 6-1, 6-3 and 6-4;
  - (3) identify water quality baseline levels at the Western tenement boundary for the criteria measured under the Australian and New Zealand Environmental and Conservation Council and Agriculture and Resource Management Council of Australia and New Zealand (ANZECC/ARMCANZ (2000)) *Australian Water Quality Guidelines for Fresh and Marine Waters* and its updates;
  - (4) require the proponent to monitor the hydrology, extent of discharges and ecology of the Weeli Wolli Creek System;
  - (5) include provisions for remediating the Weeli Wolli Creek System to ensure that identified environmental values associated with the Weeli Wolli Creek System and any downstream ecosystems, including the Fortescue Marsh, are maintained.
- 6-7 Prior to commencing groundwater abstraction from or excavation below the water table at Junction South West A, Junction South West C and Oxbow and until advised otherwise by the CEO, the proponent shall implement the approved Water Discharge Monitoring and Management Plan.

- 6-8 Commencing on the date of this statement and until it commences implementation of the approved Water Discharge Monitoring and Management Plan in accordance with condition 6-7, the proponent shall implement Section 1 Groundwater Management Plan and Section 2 Surface Water Management Plan of Part 3 – Management Plans of the *Yandicoogina iron Ore Environmental Management Program (March 2011)*.
- 6-9 The proponent shall annually submit the results of monitoring required by condition 6-6, in the compliance assessment report required by condition 4-6.

### **Riparian Vegetation**

- 7-1 The proponent shall ensure that groundwater abstraction does not cause clearing or loss of vegetation or groundwater dependent ecosystems outside Zones 1, 2, 2a, 3, 3a, 4 and 5 as shown in Figure 1.
- 7-2 The proponent shall ensure that dewatering discharge does not cause clearing or loss of vegetation or groundwater dependent ecosystems outside Zones 1, 2, 2a, 3, 3a, 4 and 5.
- 7-3 The proponent shall manage the proposal in a manner that ensures there is no irreversible impact to riparian vegetation or groundwater dependent ecosystems within Zones 1, 2, 2a, 3, 3a, 4 and 5.
- 7-4 The proponent shall prepare a Vegetation and Groundwater Dependent Ecosystems Monitoring and Management Plan.
- 7-5 The Vegetation and Groundwater Dependent Ecosystems Monitoring and Management Plan required pursuant to condition 7-4 shall:
- (1) when implemented, require the proponent to manage the implementation of the proposal to meet the requirements of conditions 7-1, 7-2, and 7-3;
  - (2) when implemented, require the proposal to monitor to substantiate whether conditions 7-1, 7-2 and 7-3 are being met;
  - (3) require the proponent to minimise impact to riparian vegetation and groundwater dependent ecosystems from groundwater abstraction and dewatering discharge;
  - (4) require the proponent to maintain the abundance, diversity, geographical distribution and productivity of vegetation communities through the avoidance or management of adverse impacts and improvement in knowledge;
  - (5) require the proponent to maintain the flow paths, quantity and quality of water within Marillana, Yandicoogina and Weeli Wolli Creeks and the underlying aquifers to protect the surface water and groundwater dependent ecological systems;
  - (6) identify potential impact monitoring and control sites between the Oxbow pit and the Fortescue Marsh;
  - (7) require the proponent to design a survey to acquire baseline biotic data, including health and abundance parameters and environmental data;
  - (8) define health and abundance parameters;
  - (9) define monitoring frequency and timing;
  - (10) identify criteria to measure any decline in health;
  - (11) define critical correlative environmental parameters, including groundwater drawdown;

- (12) define trigger levels for no impact;
  - (13) define trigger levels for no irreversible impact;
  - (14) provide details of management actions and strategies to be implemented should trigger levels defined pursuant to condition 7-5(12) be exceeded outside Zones 1, 2, 2a, 3, 3a, 4 and 5; and
  - (15) provide details of management actions and strategies to be implemented should trigger levels defined pursuant to condition 7-5(13) be exceeded within Zones 1, 2, 2a, 3, 3a, 4 or 5.
- 7-6 Prior to commencing groundwater abstraction from or excavation below the water table at Junction South West A, Junction South West C and Oxbow and until advised otherwise by the CEO, the proponent shall implement the approved Vegetation and Groundwater Dependent Ecosystems Monitoring and Management Plan.
- 7-7 The proponent shall review and revise the approved Vegetation and Groundwater Dependent Ecosystems Monitoring and Management Plan at intervals not exceeding five years, to the approval of the CEO.
- 7-8 Commencing on the date of this statement and until it commences implementation of the approved Vegetation and Groundwater Dependent Ecosystems Monitoring and Management Plan in accordance with condition 7-6, the proponent shall implement Section 6 Riparian vegetation management Plan Part 3 – Management Plans of the *Yandicoogina Iron Ore Environmental Management Program (March 2011)*.
- 7-9 In the event that monitoring, undertaken pursuant to condition 7-6, identifies that trigger levels for no impact, defined pursuant to condition 7-5(12), have been or are being exceeded outside Zones 1, 2, 2a, 3, 3a, 4 and 5, the proponent shall implement management actions and strategies defined in condition 7-5(14) to the satisfaction of the CEO.
- 7-10 In the event that monitoring, undertaken pursuant to condition 7-6, identifies that trigger levels for no irreversible impact, defined pursuant to condition 7-5(13), have been or are being exceeded within Zones 1, 2, 2a, 3, 3a, 4 or 5, the proponent shall implement management actions and strategies defined in condition 7-5(15) to the satisfaction of the CEO.

## **Weeds**

- 8-1 The proponent shall ensure:
- (1) no increase in the species of weeds (including both declared weeds and environmental weeds) in the proposal area as a result of the implementation of the proposal;
  - (2) the cover of weeds (including both declared weeds and environmental weeds) within the proposal area does not exceed that on comparable, nearby land, determined by the CEO which has not been disturbed during implementation of the proposal; and

- (3) reference sites on nearby land are to be chosen in consultation with the OEPA, on advice from the DEC and established within the proposal area and outside the impact area to the satisfaction of the CEO. The reference sites are to be monitored biennially to determine whether changes in weed cover and type are as a result of proposal implementation or broader regional changes.

## **Decommissioning and Rehabilitation**

- 9-1 Within 12 months following commissioning of the Junction South West or Oxbow pits, whichever is first, the proponent shall prepare and implement a Yandicoogina Decommissioning and Rehabilitation Plan in accordance with the *Guidelines for Preparing Mine Closure Plans, June 2011* and any updates to the requirements of the CEO on advice of the Department of Mines and Petroleum.
- 9-2 The Yandicoogina Decommissioning and Rehabilitation Plan required pursuant to condition 9-1 shall ensure that closure planning and rehabilitation are carried out in a coordinated, progressive manner and are integrated with development planning, consistent with current best practice, and the agreed land uses.
- 9-3 The Yandicoogina Decommissioning and Rehabilitation Plan required pursuant to condition 9-1 shall set out procedures to:
  - (1) manage long-term hydrogeological impacts of mining the channel iron deposit;
  - (2) model the long-term hydrological impacts, particularly the water levels and quality both in the pit void and downstream of waste material landforms;
  - (3) manage over the long-term the surface water systems affected by the open pit;
  - (4) progressively rehabilitate all disturbed areas to a standard suitable for the agreed end land use(s), with consideration and incorporation of:
    - (a) the characteristics of the pre-mining ecosystems within the project area (through research and baseline surveys);
    - (b) the performance of previously rehabilitated areas within the mining lease;
    - (c) the performance of rehabilitation areas at the proponent's other operations in the Pilbara; and
    - (d) best practice rehabilitation techniques used elsewhere in the mining industry.
  - (5) develop and identify completion criteria;
  - (6) monitor rehabilitation to assess the performance of all rehabilitated areas against the completion criteria;
  - (7) report on the rehabilitation and monitoring results;
  - (8) remove all infrastructure;
  - (9) develop management strategies and/or contingency measures in the event that operational experience and/or monitoring identify any significant environmental impact as a result of the proposal;
  - (10) manage and monitor mineral waste including physical characteristics and acid or neutral metalliferous drainage using national and international standards and updates; and
  - (11) develop a 'walk away' solution for the decommissioned mine site.
- 9-4 The proponent shall review and revise the Yandicoogina Decommissioning and Rehabilitation Plan required by condition 9-1 at intervals not exceeding three years.

- 9-5 The proponent shall make revisions of the Yandicoogina Decommissioning and Rehabilitation Plan required by condition 9-1 publicly available.

**Residual Impact and Risk Management Measures**

- 10-1 In view of the significant residual impacts and risks (permanent and temporary) to native vegetation including riparian vegetation as a result of the implementation of the proposal, the proponent shall contribute three million dollars (\$AUD) to a strategic regional conservation initiative for the Pilbara as determined by the Minister for Environment on advice of the Environmental Protection Authority and the DEC.
- 10-2 The contribution shall be paid in full by 31 December 2013, unless otherwise agreed by the CEO.

[Signed 18 October 2012]

**HON BILL MARMION MLA  
MINISTER FOR ENVIRONMENT; WATER**



**Schedule 1**  
**The Proposal (Assessment No. 1725)**

**Table 1: Summary of proposal**

<b>Proposal Title</b>	Yandicoogina Iron Ore Project - Expansion to Include Junction South West and Oxbow Deposits
<b>Short description</b>	<p>The proposal is to develop iron ore deposits, Junction Central, Junction South East, Junction South West and Oxbow, located in the central Pilbara region of Western Australia, on mining lease 274SA.</p> <p>Terrestrial infrastructure includes:</p> <ul style="list-style-type: none"> <li>• ore transport and storage infrastructure (including rail link) - car dumpers, conveyors, stockyards, ore stackers and ore reclaimers, and storage infrastructure, rail loops;</li> <li>• rail corridor allowing for rail lines and associated infrastructure;</li> <li>• construction and operations support infrastructure;</li> <li>• a diesel-fired power station and transmission lines;</li> <li>• accommodation camps;</li> <li>• access roads; and</li> <li>• an airstrip.</li> </ul> <p>The location of the various project components is shown in Figures 1, 2 and 3.</p>

**Table 2: Location and authorised extent of physical and operational elements**

<b>Column 1</b>	<b>Column 2</b>	<b>Column 3</b>
<b>Element</b>	<b>Location</b>	<b>Authorised Extent</b>
Clearing	Figure 2	<ul style="list-style-type: none"> <li>• Up to 5,600 ha within Restricted Clearing Area 1; and</li> <li>• up to 60 ha within Restricted Clearing Area 2.</li> </ul>
Dewatering from Junction South East and Junction Central operations	Figure 3	No more than 35 GL/y
Dewatering from Junction South West A, Junction South West C and Oxbow operations	Figure 3	No more than 18 GL/y
Surface Water Discharge from Junction South West A, Junction South West C and Oxbow operations	Figure 3	Up to 16 GL/y

**Table 3: Abbreviations**

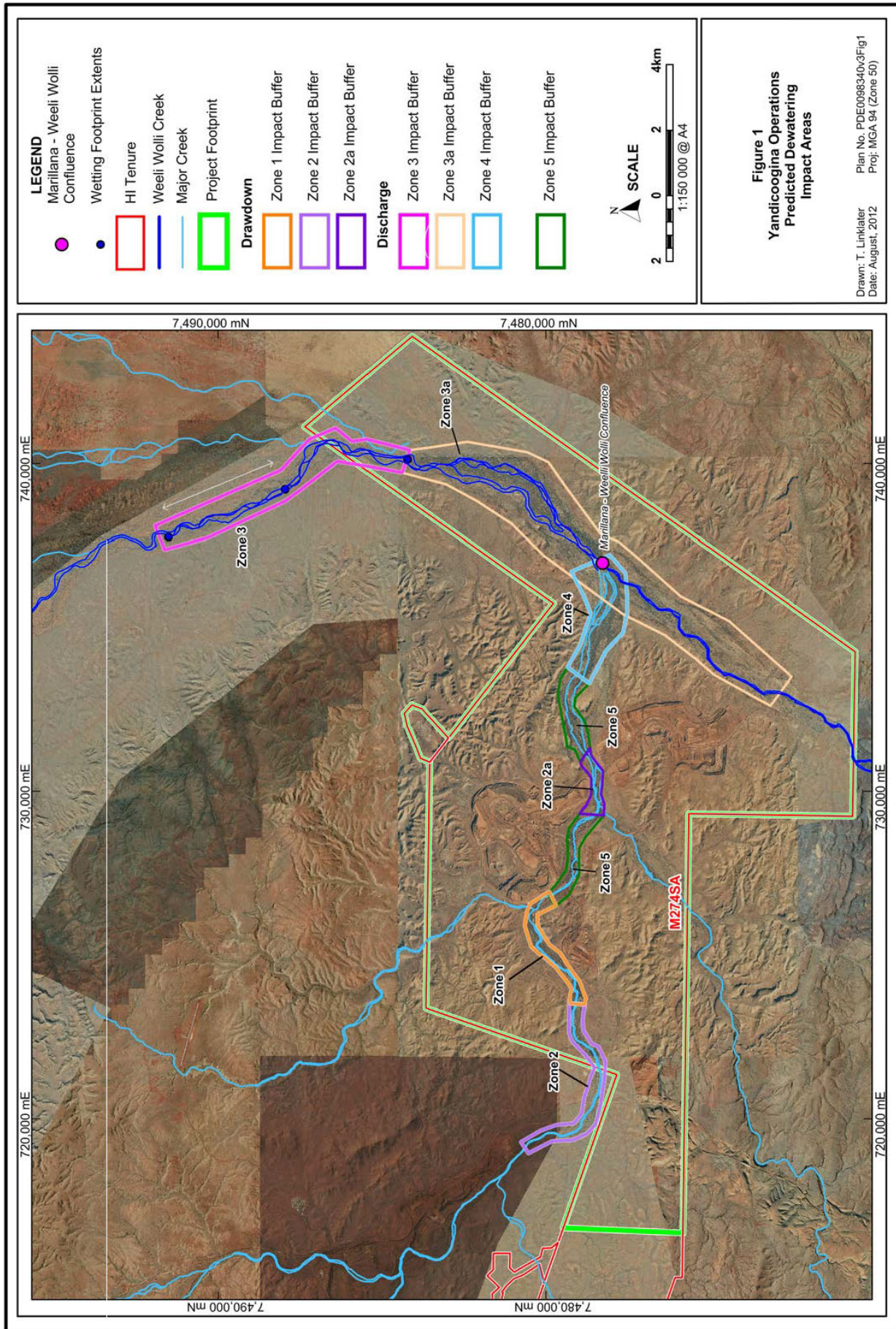
<b>Abbreviation</b>	<b>Term</b>
Ha	hectare
GL/y	Gigalitres per year

**Figures (attached)**

Figure 1: Yandicoogina Operations Development Envelope and Predicted Dewatering Impact Areas

Figure 2: Yandicoogina Operations Proposed Clearing Areas

Figure 3: Location of the Junction South West (JSW A and JSW C), Oxbow, Junction Central and Junction South East pits.

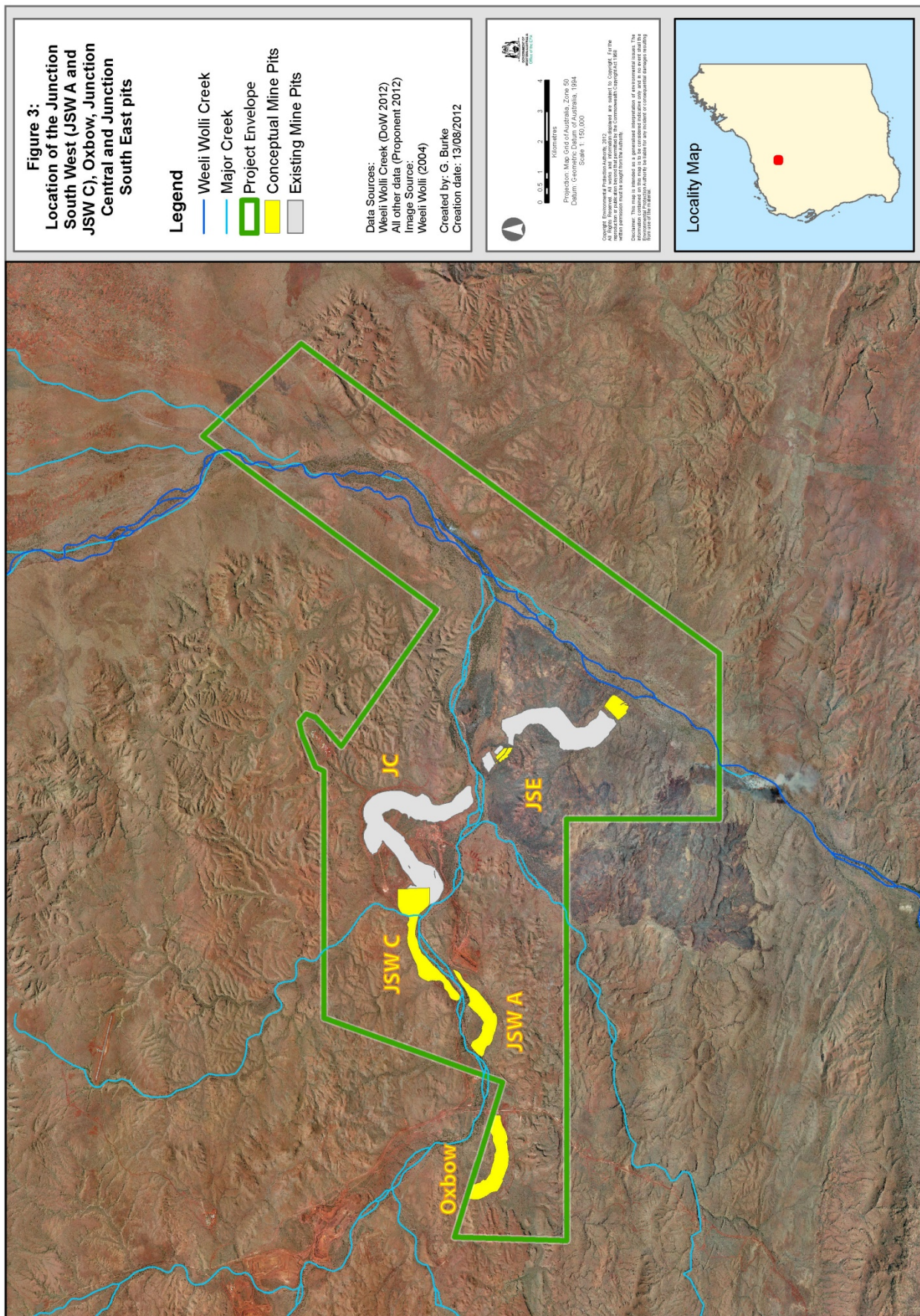


**Figure 1:** Yandicoogina Operations Development Envelope and Predicted Dewatering Impact Areas









**Figure 3:** Location of the Junction South West (JSW A and JSW C), Oxbow, Junction Central and Junction South East Pits

## Schedule 1

Term or Phrase	Definition
Approved Vegetation and Groundwater Dependent Ecosystems Monitoring and Management Plan	The Vegetation and Groundwater Dependent Ecosystems Monitoring and Management Plan for which the proponent has received written notification from the CEO that it meets the requirements of condition 7-5.
Approved Water Discharge Monitoring and Management Plan	The Water Discharge Monitoring and Management Plan for which the proponent has received written notification from the CEO that it meets the requirements of condition 6-6.
CEO	The Chief Executive Officer of the Department of the Public Service of the State responsible for the administration of section 48 of the <i>Environmental Protection Act 1986</i> , or his delegate.
DEC	Department of Environment and Conservation
Junction Central	Delineated in Figure 3 as JC.
Junction South East	Delineated in Figure 3 as JSE.
Junction South West A	Delineated in Figure 3 as JSW A.
Junction South West C	Delineated in Figure 3 as JSW C.
Marillana Creek and Weeli Wolli Creek System Confluence	Delineated in Figure 1 as Marillana – Weeli Wolli Confluence.
MGA	Map Grid of Australia
No Clearing Area	Delineated in Figure 2 as No Clearing Area.
OEPA	Office of the Environmental Protection Authority.
Oxbow	Delineated in Figure 3 as Oxbow.
Proposal Area	Delineated in Figure 1 as Project Footprint.
Restricted Clearing Area 1	Delineated in Figure 2 as Restricted Clearing Area 1.
Restricted Clearing Area 2	Delineated in Figure 2 as Restricted Clearing Area 2.
Riparian Vegetation	The distinctive vegetation associated with a wetland or watercourse. (Department of Environment and Conservation – <i>Native vegetation clearing legislation in Western Australia</i> (Version 2 April 2010)).
'Walk Away' Solution	Means that the site shall either no longer require management at the time the proponent ceases mining operations, or if further management is deemed necessary, the proponent shall make adequate provisions so that the required management is undertaken with no liability to the State.
Weeli Wolli Creek System	Delineated in Figure 1 as Weeli Wolli Creek.
Zone 1	Delineated in Figure 1 as Zone 1 and defined by MGA co-ordinates for Zone 1 in Schedule 2.
Zone 2	Delineated in Figure 1 as Zone 2 and defined by MGA co-ordinates for Zone 2 in Schedule 2.

Zone 2a	Delineated in Figure 1 as Zone 2a and defined by MGA co-ordinates for Zone 2a in Schedule 2.
Zone 3	Delineated in Figure 1 as Zone 3 and defined by MGA co-ordinates for Zone 3 in Schedule 2.
Zone 3a	Delineated in Figure 1 as Zone 3a and defined by MGA co-ordinates for Zone 3a in Schedule 2.
Zone 4	Delineated in Figure 1 as Zone 4 and defined by MGA co-ordinates for Zone 4 in Schedule 2.
Zone 5	Delineated in Figure 1 as Zone 5 and defined by MGA co-ordinates for Zone 5 in Schedule 2.

**Yandicoogina Junction South West and Oxbow  
Zone 1**

***Prepared 14 August 2012***

Co-ordinates defining *Zone 1* are prescribed below, noting that the correct recreation of the boundary requires the sequential connection of the co-ordinates as per its co-ordinate number.

All co-ordinates are listed in Map Grid of Australia Zone 50 (MGA Zone 50), datum of Geodetic Datum of Australia 1994 (GDA94).

**Co-ordinate**

<b>No.</b>	<b>Easting</b>	<b>Northing</b>
1	723522.48	7479273.82
2	723778.20	7479261.64
3	723956.79	7479212.94
4	724151.63	7479322.53
5	724638.70	7479712.19
6	724898.48	7480004.44
7	725052.72	7480219.55
8	725271.90	7480459.04
9	725896.98	7480645.75
10	726351.58	7480564.57
11	726566.69	7480477.78
12	726939.78	7479896.35
13	726516.39	7479693.86
14	726233.87	7480256.09
15	725905.10	7480252.03
16	725308.44	7479882.66
17	725060.84	7479566.07
18	724561.58	7479241.34
19	724192.21	7478969.40
20	723668.61	7478770.51
21	723490.01	7478819.22
22	723522.48	7479273.82

END OF CO-ORDINATE LISTING



**Yandicoogina Junction South West and Oxbow  
Zone 2**

***Prepared 14 August 2012***

Co-ordinates defining Zone 2 are prescribed below, noting that the correct recreation of the boundary requires the sequential connection of the co-ordinates as per its co-ordinate number.

All co-ordinates are listed in Map Grid of Australia Zone 50 (MGA Zone 50), datum of Geodetic Datum of Australia 1994 (GDA94).

**Co-ordinate**

<b>No.</b>	<b>Easting</b>	<b>Northing</b>
1	723522.48	7479277.88
2	723494.07	7478811.09
3	723007.00	7478876.04
4	722698.51	7478855.74
5	722304.79	7478608.14
6	722199.26	7478388.96
7	721752.77	7478173.83
8	721200.74	7478210.36
9	720413.31	7478332.14
10	719828.82	7478478.26
11	719536.57	7478750.21
12	719353.91	7479164.23
13	719317.38	7479817.73
14	719106.32	7480215.50
15	718943.95	7480532.10
16	719288.97	7480755.34
17	719629.93	7480178.97
18	719804.47	7479687.83
19	719861.29	7479147.99
20	720161.65	7478900.39
21	720656.85	7478827.34
22	721322.52	7478604.08
23	721566.06	7478510.73
24	721947.59	7478794.86
25	722373.79	7479204.82
26	722641.69	7479298.17
27	723522.48	7479277.88

END OF CO-ORDINATE LISTING

**Yandicoogina Junction South West and Oxbow  
Zone 2a**

***Prepared 14 August 2012***

Co-ordinates defining *Zone 2a* are prescribed below, noting that the correct recreation of the boundary requires the sequential connection of the co-ordinates as per its co-ordinate number.

All co-ordinates are listed in Map Grid of Australia Zone 50 (MGA Zone 50), datum of Geodetic Datum of Australia 1994 (GDA94).

**Co-ordinate**

<b>No.</b>	<b>Easting</b>	<b>Northing</b>
1	729316.44	7478971.23
2	729469.66	7478861.78
3	729554.09	7478771.10
4	729866.79	7478627.26
5	730204.50	7478611.62
6	730389.00	7478611.62
7	730579.75	7478739.84
8	730776.74	7478908.69
9	730898.70	7478943.08
10	731316.68	7478650.92
11	731120.72	7478624.13
12	730989.38	7478545.95
13	730779.87	7478380.23
14	730617.27	7478258.27
15	730185.75	7478277.04
16	729913.69	7478311.43
17	729619.76	7478214.49
18	729257.02	7478227.00
19	729316.44	7478971.23

END OF CO-ORDINATE LISTING

**Yandicoogina Junction South West and Oxbow  
Zone 3**

***Prepared 14 August 2012***

Co-ordinates defining *Zone 3* are prescribed below, noting that the correct recreation of the boundary requires the sequential connection of the co-ordinates as per its co-ordinate number.

All co-ordinates are listed in Map Grid of Australia Zone 50 (MGA Zone 50), datum of Geodetic Datum of Australia 1994 (GDA94).

<b>Co-ordinate</b>		
<b>No.</b>	<b>Easting</b>	<b>Northing</b>
1	737365.29	7491641.81
2	738101.04	7491917.07
3	739789.09	7488078.97
4	740730.85	7487208.30
5	741086.23	7486408.70
6	740677.53	7485911.17
7	740730.84	7485466.94
8	740411.00	7484152.03
9	739718.02	7484383.03
10	739913.47	7485431.40
11	740056.38	7486354.96
12	739131.64	7487545.90
13	738847.34	7487954.59
14	737745.67	7490282.33
15	737365.29	7491641.81

END OF CO-ORDINATE LISTING

**Yandicoogina Junction South West and Oxbow  
Zone 3a**

***Prepared 14 August 2012***

Co-ordinates defining *Zone 3a* are prescribed below, noting that the correct recreation of the boundary requires the sequential connection of the co-ordinates as per its co-ordinate number.

All co-ordinates are listed in Map Grid of Australia Zone 50 (MGA Zone 50), datum of Geodetic Datum of Australia 1994 (GDA94).

**Co-ordinate**

<b>No.</b>	<b>Easting</b>	<b>Northing</b>
1	732610.18	7473145.31
2	732923.39	7473740.85
3	733560.26	7474876.14
4	734003.30	7475374.56
5	734764.78	7476371.40
6	735401.65	7477645.14
7	736398.49	7478988.10
8	737187.65	7480054.17
9	738170.65	7481051.00
10	738849.05	7482103.22
11	739361.32	7483044.68
12	739719.85	7484391.49
13	740406.58	7484172.12
14	740482.75	7483556.94
15	740658.21	7482396.36
16	740344.29	7480566.42
17	740039.69	7479915.72
18	739278.23	7479389.60
19	737852.20	7478323.54
20	737602.99	7477769.74
21	737104.58	7477174.40
22	735955.44	7475886.82
23	735193.97	7474405.41
24	733501.13	7472501.85
25	732610.18	7473145.31

END OF CO-ORDINATE LISTING

**Yandicoogina Junction South West and Oxbow  
Zone 4**

***Prepared 14 August 2012***

Co-ordinates defining *Zone 4* are prescribed below, noting that the correct recreation of the boundary requires the sequential connection of the co-ordinates as per its co-ordinate number.

All co-ordinates are listed in Map Grid of Australia Zone 50 (MGA Zone 50), datum of Geodetic Datum of Australia 1994 (GDA94).

**Co-ordinate**

<b>No.</b>	<b>Easting</b>	<b>Northing</b>
1	733793.61	7479334.18
2	734462.81	7478946.40
3	735433.52	7478629.57
4	735622.26	7478710.46
5	735972.79	7478845.28
6	736700.81	7479216.04
7	737213.13	7478043.11
8	736646.89	7477571.24
9	735932.35	7477517.31
10	735440.26	7477510.57
11	734840.30	7477638.64
12	734287.54	7478164.45
13	733299.14	7478674.90
14	733793.61	7479334.18

END OF CO-ORDINATE LISTING

**Yandicoogina Junction South West and Oxbow  
Zone 5**

***Prepared 14 August 2012***

Co-ordinates defining *Zone 5* are prescribed below, noting that the correct recreation of the boundary requires the sequential connection of the co-ordinates as per its co-ordinate number.

All co-ordinates are listed in Map Grid of Australia Zone 50 (MGA Zone 50), datum of Geodetic Datum of Australia 1994 (GDA94).

**Co-ordinate**

<b>No.</b>	<b>Easting</b>	<b>Northing</b>
1	731330.05	7478642.02
2	730902.64	7478946.02
3	731276.22	7479115.83
4	731354.96	7479342.36
5	731688.76	7479396.84
6	732490.83	7479544.02
7	732980.39	7479640.01
8	733450.74	7479553.62
9	733796.94	7479336.58
10	733300.72	7478676.22
11	732867.20	7479090.30
12	732587.92	7479131.18
13	732383.56	7478981.32
14	732135.66	7478814.49
15	731732.52	7478699.30
16	731330.05	7478642.02
17	726464.49	7479723.60
18	726886.85	7479925.18
19	727247.41	7479614.83
20	727606.78	7479378.04
21	728048.34	7479320.44
22	728534.86	7479362.78
23	728861.83	7479294.66
24	729318.22	7478967.70
25	729256.92	7478225.20
26	728969.85	7478485.32
27	728582.54	7478804.21
28	728269.20	7478981.33
29	727875.55	7478984.48
30	727472.21	7478974.51
31	726838.85	7479282.04
32	726704.47	7479454.83
33	726464.49	7479723.60

END OF CO-ORDINATE LISTING

## Notes

The following notes are provided for information and do not form a part of the implementation conditions of the statement:

- The proponent for the time being nominated by the Minister for Environment under section 38(6) of the *Environmental Protection Act 1986* is responsible for the implementation of the proposal unless and until that nomination has been revoked and another person is nominated.
- If the person nominated by the Minister, ceases to have responsibility for the proposal, that person is required to provide written notice to the Environmental Protection Authority of its intention to relinquish responsibility for the proposal and the name of the person to whom responsibility for the proposal will pass or has passed. The Minister for Environment may revoke a nomination made under section 38(6) of the *Environmental Protection Act 1986* and nominate another person.
- To initiate a change of proponent, the nominated proponent and proposed proponent are required to complete and submit *Post Assessment Form 1 – Application to Change Nominated Proponent*.
- The General Manager of the Office of the Environmental Protection Authority was the Chief Executive Officer of the Department of the Public Service of the State responsible for the administration of section 48 of the *Environmental Protection Act 1986* at the time the statement was signed by the Minister for Environment.

## **ATTACHMENT 1 TO STATEMENT 914**

### **NOTICE OF CHANGES TO IMPLEMENTATION CONDITIONS**

(section 46C of the *Environmental Protection Act 1986*)

#### **YANDICOOGINA IRON ORE PROJECT – EXPANSION TO INCLUDE JUNCTION SOUTH WEST AND OXBOW DEPOSITS**

Pursuant to section 46C(1)(a) of the *Environmental Protection Act 1986*, the implementation conditions applying to the above proposal are changed in accordance with this Notice. I consider these changes to be of a minor nature and desirable in order to standardise conditions relating to different proposals.

[Signed 9 April 2015]

**HON ALBERT JACOB MLA**  
**MINISTER FOR ENVIRONMENT; HERITAGE**

---

#### **1. Condition 6-4 is deleted, and replaced with:**

6-4 The proponent shall ensure that any dewater discharged to the environment does not exceed whichever is greater of the following:

- (1) the default trigger for the protection of marine and freshwater ecosystems as per the Australian and New Zealand Environmental and Conservation Council and Agriculture and Resource Management Council of Australia and New Zealand (ANZECC/ARMCANZ (2000)) *Australian Water Quality Guidelines for Fresh and Marine Waters* and its updates;
- (2) baseline levels identified pursuant to condition 6-6(3); or
- (3) other criteria agreed by the CEO on the advice of the Department of Environment Regulation.



## Attachment 2 to Ministerial Statement 914

### Change to proposal approved under section 45C of the *Environmental Protection Act 1986*

This Attachment replaces Schedule 1 of Ministerial Statement 914

**Proposal:** Yandicoogina Iron Ore Project – Expansion to Include Junction South West and Oxbow Deposits

**Proponent:** Hamersley Iron - Yandi Pty Limited

**Changes:**

- Above and below water table mining of an additional small satellite pit at Oxbow East (Oxbow East Pitlet);
- Amalgamation of dewatering limits and removal of surface water discharge limit from Table 2;
- Amendment to the Clearing Avoidance Area as defined in Figure 2;
- Revised Figure 3; and
- Amalgamated Abbreviations and Definitions Table (Table 3).

**Table 1: Summary of the Proposal**

Proposal Title	Yandicoogina Iron Ore Project – Expansion to Include Junction South West and Oxbow Deposits
Short Description	<p>The proposal is to develop iron ore deposits, Junction Central, Junction South East, Junction South West and Oxbow, located in the central Pilbara region of Western Australia, on mining lease 274SA. The proposal includes groundwater abstraction to dewater pits and discharge of surplus dewater into the Weeli Wolli Creek System.</p> <p>Terrestrial infrastructure includes:</p> <ul style="list-style-type: none"><li>• Ore transport and storage infrastructure (including rail link) – car dumpers, conveyors, stockyards, ore stackers and ore reclaimers, and storage infrastructure, rail loops;</li><li>• Rail corridor allowing for rail lines and associated infrastructure;</li><li>• Construction and operations support infrastructure;</li><li>• A diesel-fired power station and transmission lines;</li><li>• Accommodation camps;</li><li>• Access roads; and</li><li>• An airstrip.</li></ul> <p>The location of the various project components is shown in Figures 1, 2 and 3.</p>

**Table 2: Location and authorised extent of physical and operational elements**

Column 1	Column 2	Column 3	Column 4
Element	Location	Authorised Extent	Previously Authorised Extent
Clearing	Figure 2	Up to 5,600 ha within <b>Clearing Area 1</b> ; and	Up to 5,600 ha within Restricted Clearing Area 1; and

Column 1 Element	Column 2 Location	Column 3 Authorised Extent	Column 4 Previously Authorised Extent
		Up to 60 ha within Restricted Clearing Area 2.	Up to 60 ha within Restricted Clearing Area 2.
Dewatering from Junction South East and Junction Central operations	Figure 3	<b>Element replaced by “Dewatering from the Yandicoogina Iron Ore Project”</b>	No more than 35 GL/y
Dewatering from Junction South West A, Junction South West C and Oxbow operations	Figure 3	<b>Element replaced by “Dewatering from the Yandicoogina Iron Ore Project”</b>	No more than 18 GL/y
<b>Dewatering</b>	<b>Figure 3</b>	<b>Groundwater abstraction of up to 53 GL/y</b>	N/A
Surface Water Discharge from Junction South West A, Junction South West C and Oxbow operations	Figure 3	<b>Removed – discharge authorised through condition 6-3.</b>	Up to 16 GL/y

Note: Text in **bold** in Table 2 indicates a change to the proposal.

**Table 3: Abbreviations and Definitions**

Acronym or Abbreviation	Definition or Term
Approved Vegetation and Groundwater Dependent Ecosystems Monitoring and Management Plan	The Vegetation and Groundwater Dependent Ecosystems Monitoring and Management Plan for which the proponent has received written notification from the CEO that it meets the requirements of condition 7-5
Approved Water Discharge Monitoring and Management Plan	The Water Discharge Monitoring and Management Plan for which the proponent has received written notification from the CEO that it meets the requirements of condition 6-6
CEO	The Chief Executive Officer of the Department of the Public Service of the State responsible for the administration of section 48 of the Environmental Protection Act 1986, or his delegate
<b>Clearing Avoidance Area</b>	<b>Delineated in Figure 2 as Clearing Avoidance Area</b>
DEC	Department of Environment and Conservation
GL/y	Gigalitres per year
Ha	Hectare
Junction Central	Delineated in Figure 3 as JC
Junction South East	Delineated in Figure 3 as JSE
Junction South West A	Delineated in Figure 3 as JSW A
Junction South West C	Delineated in Figure 3 as JSW C
Km	Kilometre
Marillana Creek and Weeli Wolli Creek System Confluence	Delineated in Figure 1 as Marillana – Weeli Wolli Confluence
MGA	Map Grid of Australia

Acronym or Abbreviation	Definition or Term
OEPA	Office of the Environmental Protection Authority
Oxbow	Delineated in Figure 3 as Oxbow, <b>and Oxbow East</b>
<b>Oxbow East Pitlet</b>	<b>Delineated in Figure 3 as Oxbow East</b>
<b>Yandicoogina Iron Ore Project – Expansion to Include Junction SouthWest and Oxbow Deposits</b>	<b>Boundary delineated in Figure 3 as Development Envelope</b>
<b>Clearing Area 1</b>	Delineated in Figure 2 as Clearing Area 1
Restricted Clearing Area 2	Delineated in Figure 2 as Restricted Clearing Area 2
Riparian Vegetation	The distinctive vegetation associated with a wetland or watercourse. [Department of Environment and Conservation – <i>Native vegetation clearing legislation in Western Australia</i> (Version 2 April 2010)].
‘Walk Away’ Solution	Means that the site shall either no longer require management at the time the proponent ceases mining operations, or if further management is deemed necessary, the proponent shall make adequate provisions so that the required management is undertaken with no liability to the State.
Weeli Wolli Creek System	Delineated in Figure 1 as Weeli Wolli Creek.
Zone 1	Delineated in Figure 1 as Zone 1 and defined by MGA co-ordinates for Zone 1 in Schedule 2.
Zone 2	Delineated in Figure 1 as Zone 2 and defined by MGA co-ordinates for Zone 2 in Schedule 2.
Zone 2a	Delineated in Figure 1 as Zone 2a and defined by MGA co-ordinates for Zone 2a in Schedule 2.
Zone 3	Delineated in Figure 1 as Zone 3 and defined by MGA co-ordinates for Zone 3 in Schedule 2.
Zone 3a	Delineated in Figure 1 as Zone 3a and defined by MGA co-ordinates for Zone 3a in Schedule 2.
Zone 4	Delineated in Figure 1 as Zone 4 and defined by MGA co-ordinates for Zone 4 in Schedule 2.
Zone 5	Delineated in Figure 1 as Zone 5 and defined by MGA co-ordinates for Zone 5 in Schedule 2.

### Figures and Tables (attached)

Figure 1 Development envelope and predicted dewatering impact areas

Figure 2 Clearing areas and clearing avoidance area

Figure 3 Location of pits

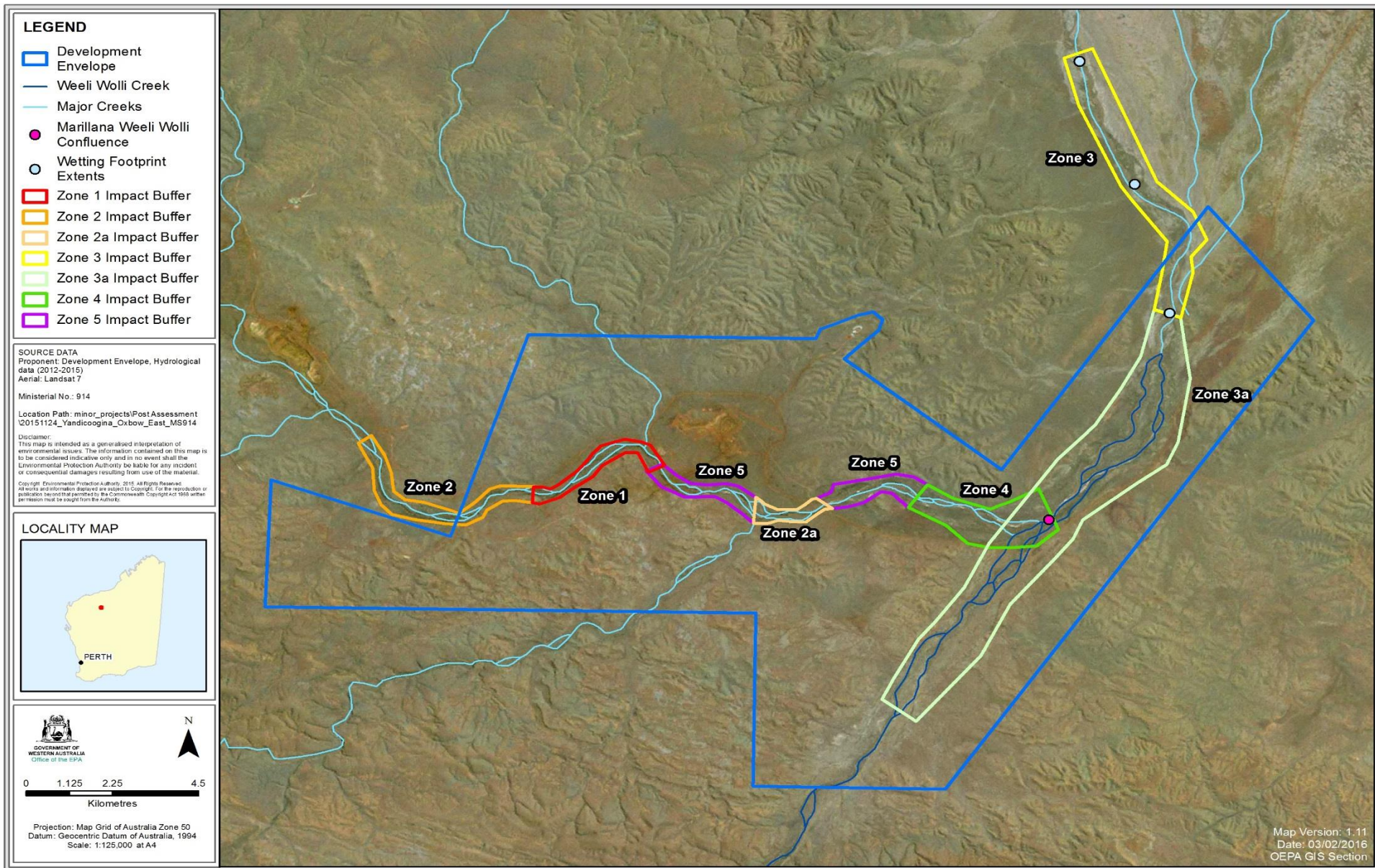
[Signed 3 March 2016]

**Robert Harvey**

DEPUTY CHAIRMAN

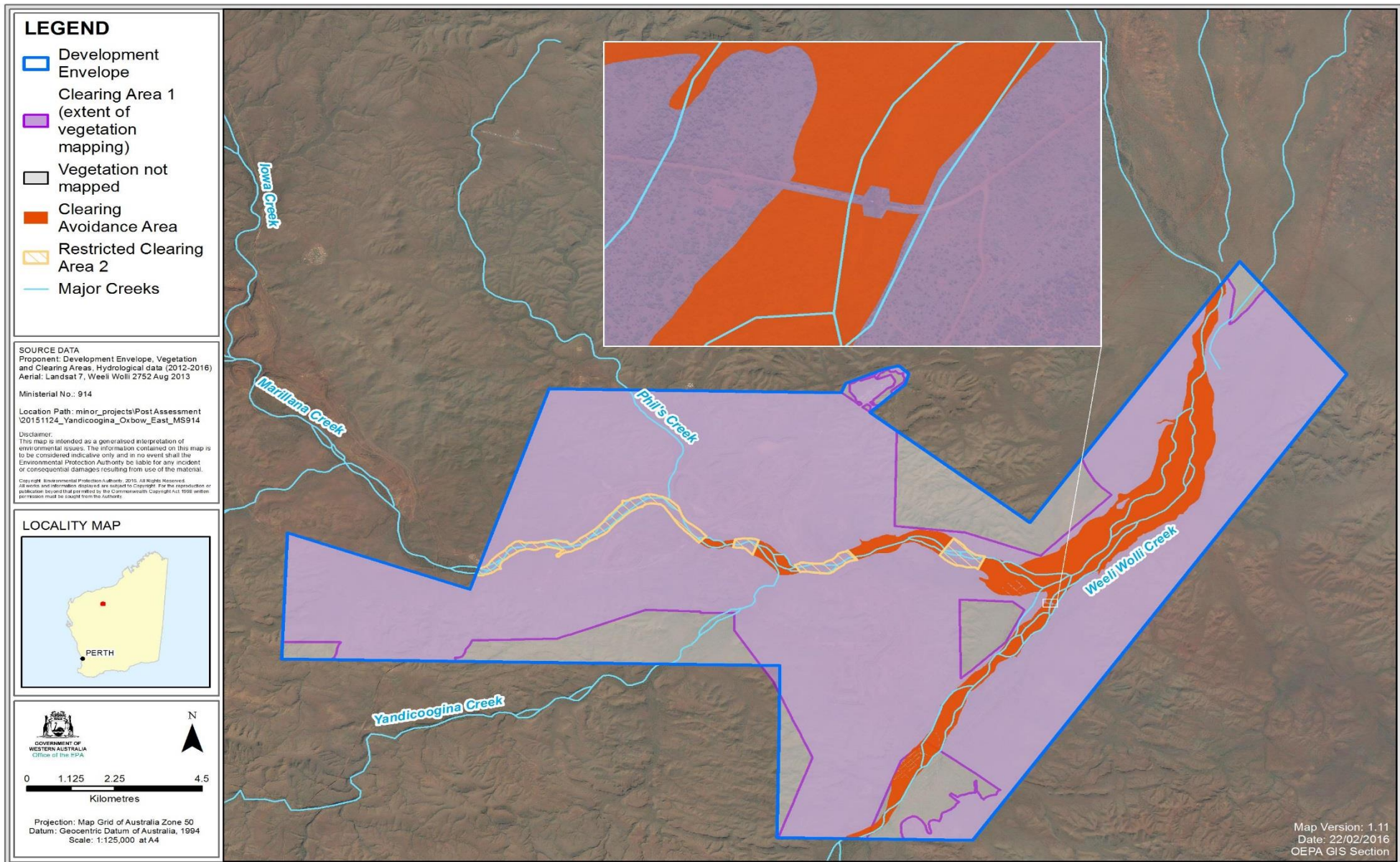
Environmental Protection Authority  
under delegated authority

Approval date: \_\_\_\_\_



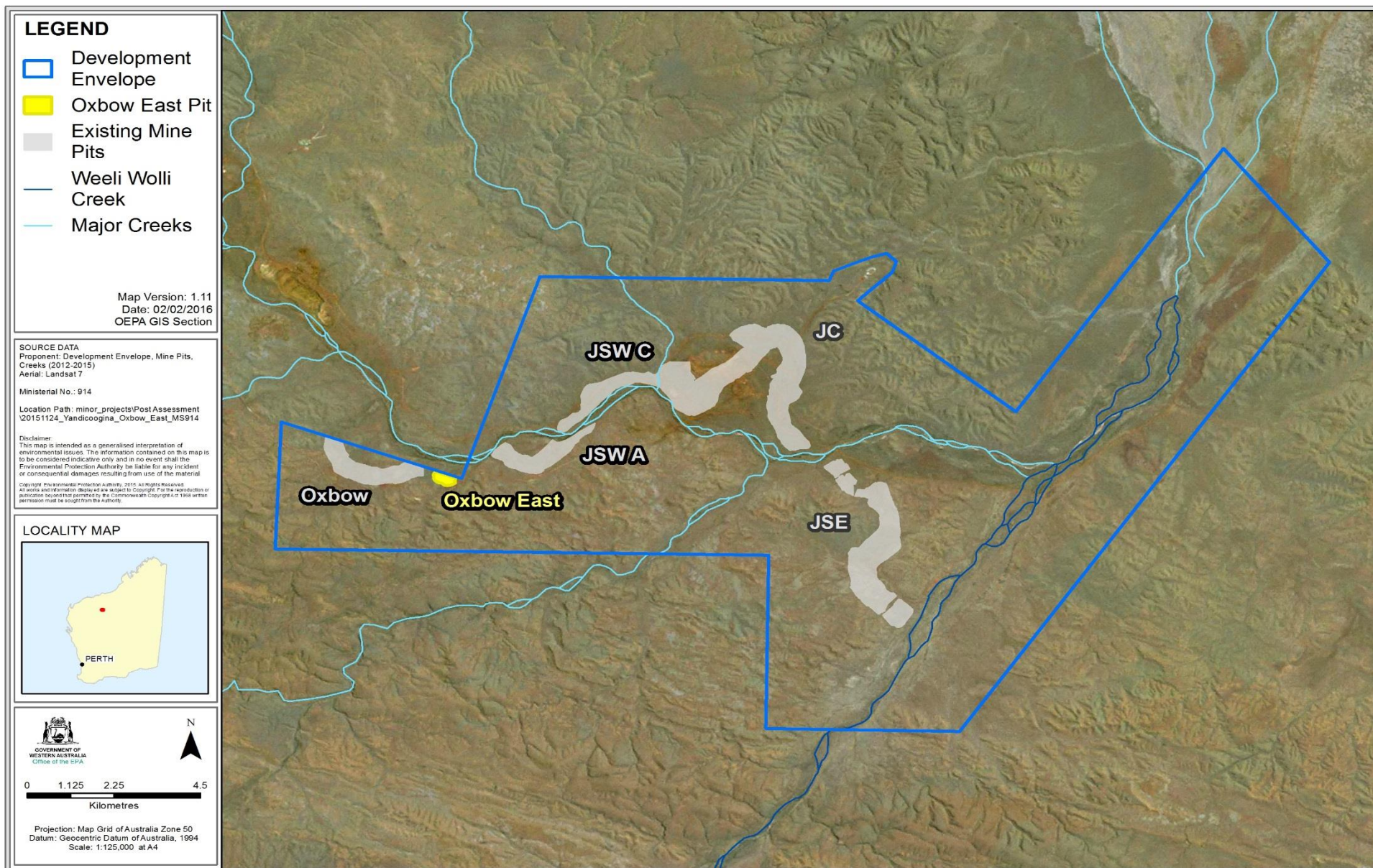
**Figure 1** Development envelope and predicted dewatering impact areas





**Figure 2** Clearing areas and Clearing Avoidance Area





**Figure 3 Location of pits**