

THIS DOCUMENT

This document has been produced by the Office of the Appeals Convenor as an electronic version of the original Statement for the proposal listed below as signed by the Minister and held by this Office. Whilst every effort is made to ensure its accuracy, no warranty is given as to the accuracy or completeness of this document.

The State of Western Australia and its agents and employees disclaim liability, whether in negligence or otherwise, for any loss or damage resulting from reliance on the accuracy or completeness of this document.

Copyright in this document is reserved to the Crown in right of the State of Western Australia. Reproduction except in accordance with copyright law is prohibited.

Published on: 1 September 2016

Statement No. 1034

STATEMENT THAT A PROPOSAL MAY BE IMPLEMENTED
(*Environmental Protection Act 1986*)

WINGELLINA NICKEL PROJECT

Proposal: To mine nickeliferous limonite ore from the Wingellina deposit located approximately 1,400 km north-east of Perth.

Proponent: Hinckley Range Pty Ltd
Australian Company Number 052 098 496

Proponent address: 18-32 Parliament Place, WEST PERTH WA 6005

Assessment number: 1986

Report of the Environmental Protection Authority: 1568

Pursuant to section 45 of the *Environmental Protection Act 1986* it has been agreed that the proposal described and documented in Tables 1 and 2 of Schedule 1 may be implemented and that the implementation of the proposal is subject to the following implementation conditions and procedures:

1 Proposal implementation

1-1 When implementing the proposal, the proponent shall not exceed the authorised extent of the proposal as defined in Table 2 in Schedule 1, unless amendments to the proposal and the authorised extent of the proposal have been approved under the EP Act.

2 Contact details

2-1 The proponent shall notify the CEO of any change of its name, physical address or postal address for the serving of notices or other correspondence within twenty eight (28) days of such change. Where the proponent is a corporation or an association of persons, whether incorporated or not, the postal address is that of the principal place of business or of the principal office in the State.

3 Time limit for proposal implementation

- 3-1 The proponent shall not commence implementation of the proposal after five (5) years from the date on this Statement, and any commencement, prior to this date, must be substantial.
- 3-2 Any commencement of implementation of the proposal, on or before five (5) years from the date of this Statement, must be demonstrated as substantial by providing the CEO with written evidence, on or before the expiration of five (5) years from the date of this Statement.

4 Compliance reporting

- 4-1 The proponent shall prepare, submit and maintain a Compliance Assessment Plan to the CEO at least six (6) months prior to the first Compliance Assessment Report required by condition 4-6, or prior to implementation, whichever is sooner.
- 4-2 The Compliance Assessment Plan shall indicate:
 - (1) the frequency of compliance reporting;
 - (2) the approach and timing of compliance assessments;
 - (3) the retention of compliance assessments;
 - (4) the method of reporting of potential non-compliances and corrective actions taken;
 - (5) the table of contents of Compliance Assessment Reports; and
 - (6) public availability of Compliance Assessment Reports.
- 4-3 After receiving notice in writing from the CEO that the Compliance Assessment Plan satisfies the requirements of condition 4-2 the proponent shall assess compliance with conditions in accordance with the Compliance Assessment Plan required by condition 4-1.
- 4-4 The proponent shall retain reports of all compliance assessments described in the Compliance Assessment Plan required by condition 4-1 and shall make those reports available when requested by the CEO.
- 4-5 The proponent shall advise the CEO of any potential non-compliance within seven (7) days of that non-compliance being known.
- 4-6 The proponent shall submit to the CEO the first Compliance Assessment Report fifteen (15) months from the date of issue of this Statement addressing the twelve (12) month period from the date of issue of this Statement and then annually from the date of submission of the first Compliance Assessment Report, or as otherwise agreed in writing by the CEO.

The Compliance Assessment Report shall:

- (1) be endorsed by the proponent's Chief Executive Officer or a person delegated to sign on the Chief Executive Officer's behalf;

- (2) include a statement as to whether the proponent has complied with the conditions;
- (3) identify all potential non-compliances and describe corrective and preventative actions taken;
- (4) be made publicly available in accordance with the approved Compliance Assessment Plan; and
- (5) indicate any proposed changes to the Compliance Assessment Plan required by condition 4-1.

5 Public availability of data

5-1 Subject to condition 5-2, within a reasonable time period approved by the CEO of the issue of this Statement and for the remainder of the life of the proposal the proponent shall make publicly available, in a manner approved by the CEO, all validated environmental data (including sampling design, sampling methodologies, empirical data and derived information products (e.g. maps)) relevant to the assessment of this proposal and implementation of this Statement.

5-2 If any data referred to in condition 5-1 contains particulars of:

- (1) a secret formula or process; or
- (2) confidential commercially sensitive information;

the proponent may submit a request for approval from the CEO to not make these data publicly available. In making such a request the proponent shall provide the CEO with an explanation and reasons why the data should not be made publicly available.

6 Conservation significant flora [*Goodenia* sp. aff. *quasilibera* (L. Ransom 868)]

6-1 Prior to the commencement of ground disturbing activities, the proponent shall prepare and submit a survey plan to the satisfaction of the CEO. This plan shall demonstrate that the following environmental outcome will be met:

- (1) The proponent shall implement the proposal in a manner that avoids, or where avoidance is not practicable, minimises the impact on the flora species *Goodenia* sp. aff. *quasilibera* (L. Ransom 868).

6-2 The survey plan shall:

- (1) when implemented, determine the presence of *Goodenia* sp. aff. *quasilibera* (L. Ransom 868) within the Water Supply Pipeline Corridor Route Development Envelope and the Central Officer Basin Borefield Development Envelope; and
- (2) detail the proposed methodology for the targeted flora survey.

- 6-3 After receiving notice in writing from the CEO that the survey plan satisfies the requirements of condition 7-2(2), the proponent shall undertake the targeted flora survey in accordance with the survey plan.
- 6-4 On completion of the targeted flora survey, the proponent shall report to the CEO on the following:
- (1) completion of the targeted flora survey in accordance with the survey plan; and
 - (2) the results of the targeted flora survey, including an infrastructure map which shows:
 - (a) locations of all known records of *Goodenia* sp. aff. *quasilibera* (L. Ransom 868), required by condition 7-2(1);
 - (b) the final alignment, dimensions, and locations of the infrastructure within the Water Supply Pipeline Corridor Route Development Envelope and the Central Officer Basin Borefield Development Envelope that demonstrates that all known records of *Goodenia* sp. aff. *quasilibera* (L. Ransom 868) will be avoided and impacts minimised.
- 6-5 After receiving notice in writing from the CEO that condition 7-4(2)(b) satisfies the requirements of condition 7-1, the proponent shall implement the proposal consistent with condition 7-4(2)(b).

[Signed 1 September 2016]

Albert Jacob MLA
MINISTER FOR ENVIRONMENT; HERITAGE

Table 1: Summary of the proposal

Proposal title	Wingellina Nickel Project
Short description	<p>The proposal is to mine nickeliferous limonite ore from the Wingellina deposit located approximately 1,400 km north-east of Perth, and use a HPAL process to produce a mixed nickel-cobalt hydroxide product.</p> <p>The proposal also includes a water supply borefield in the Central Officer Basin located approximately 100 km to the south-west, and an overland pipeline adjacent to and aligned with existing roads connecting the borefield and the mine site.</p>

Table 2: Location and authorised extent of physical and operational elements

Column 1	Column 2	Column 3
Element	Location	Authorised extent
Mine pits, supporting mine infrastructure (including HPAL processing plant), topsoil and waste rock storage areas, and tailings storage facility	Figure 1	Clearing of no more than 2,762 ha within the 5,875 ha Mine Site Area Development Envelope
Borefield and associated infrastructure	Figure 2	Clearing of no more than 94 ha within the 2,009 ha Central Officer Basin Borefield Development Envelope
Water supply pipeline and associated infrastructure	Figure 2	Clearing of no more than 117 ha within the 234 ha Water Supply Pipeline Corridor Route Development Envelope
Mine dewatering	Figure 1	Up to 0.5 GLpa of groundwater abstraction within the Mine Site Area Development Envelope.
Water supply	Figure 2	Up to 12 GLpa of groundwater abstraction within the Central Officer Basin Borefield Development Envelope

Table 3: Abbreviations and definitions

Acronym or abbreviation	Definition or term
CEO	The Chief Executive Officer of the Department of the Public Service of the State responsible for the administration of section 48 of the <i>Environmental Protection Act 1986</i> , or his delegate.
EPA	Environmental Protection Authority
EP Act	<i>Environmental Protection Act 1986</i>
GLpa	Gigalitres per annum
ha	Hectare
HPAL	High pressure acid leach
km	Kilometres
Mtpa	Million tonnes per annum
OEPA	Office of the Environmental Protection Authority

Figures (attached)

Figure 1 Mine Site Area Development Envelope

Figure 2 Central Officer Basin Borefield and Water Supply Pipeline Corridor Route Development Envelopes

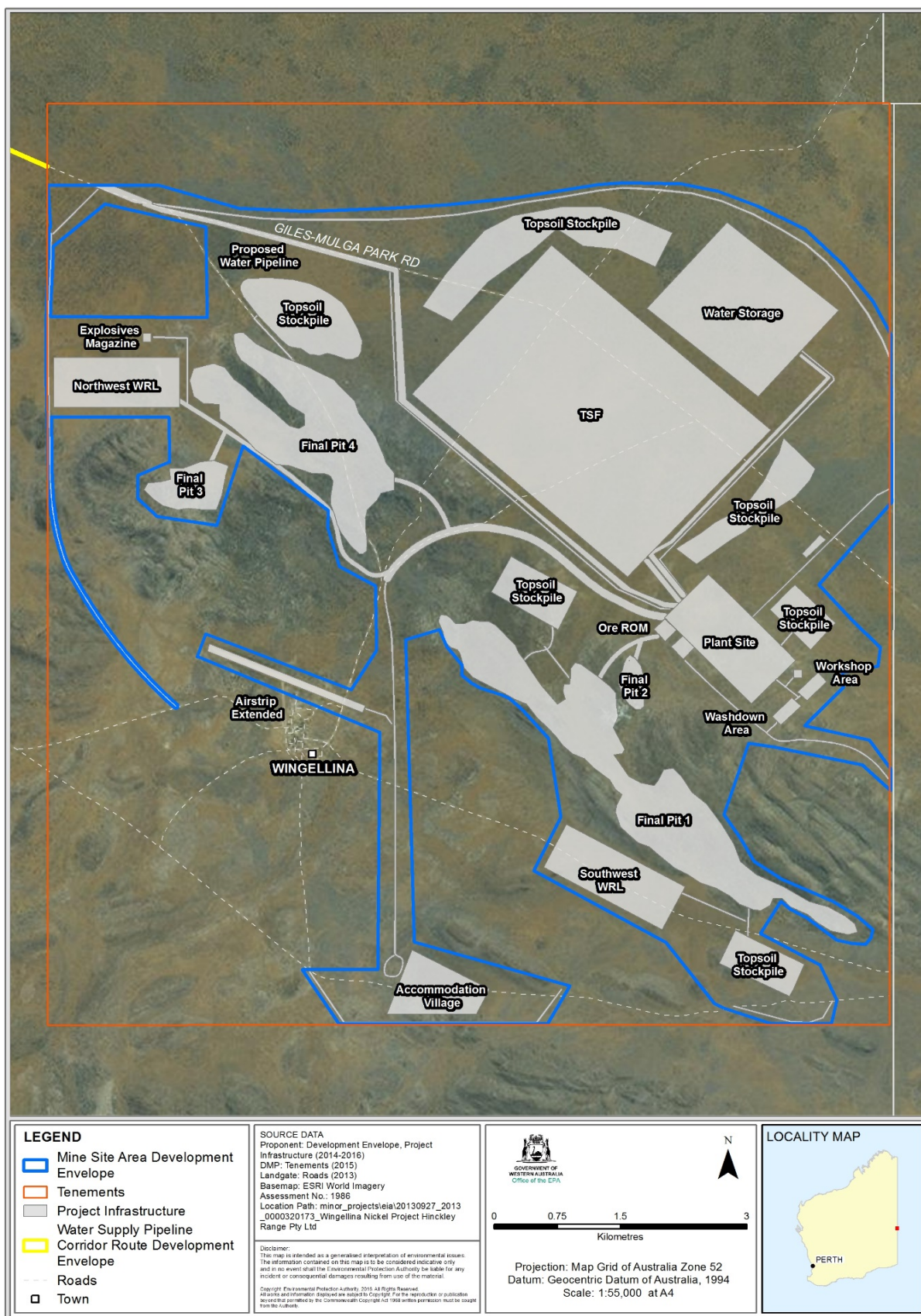


Figure 1: Mine Site Area Development Envelope

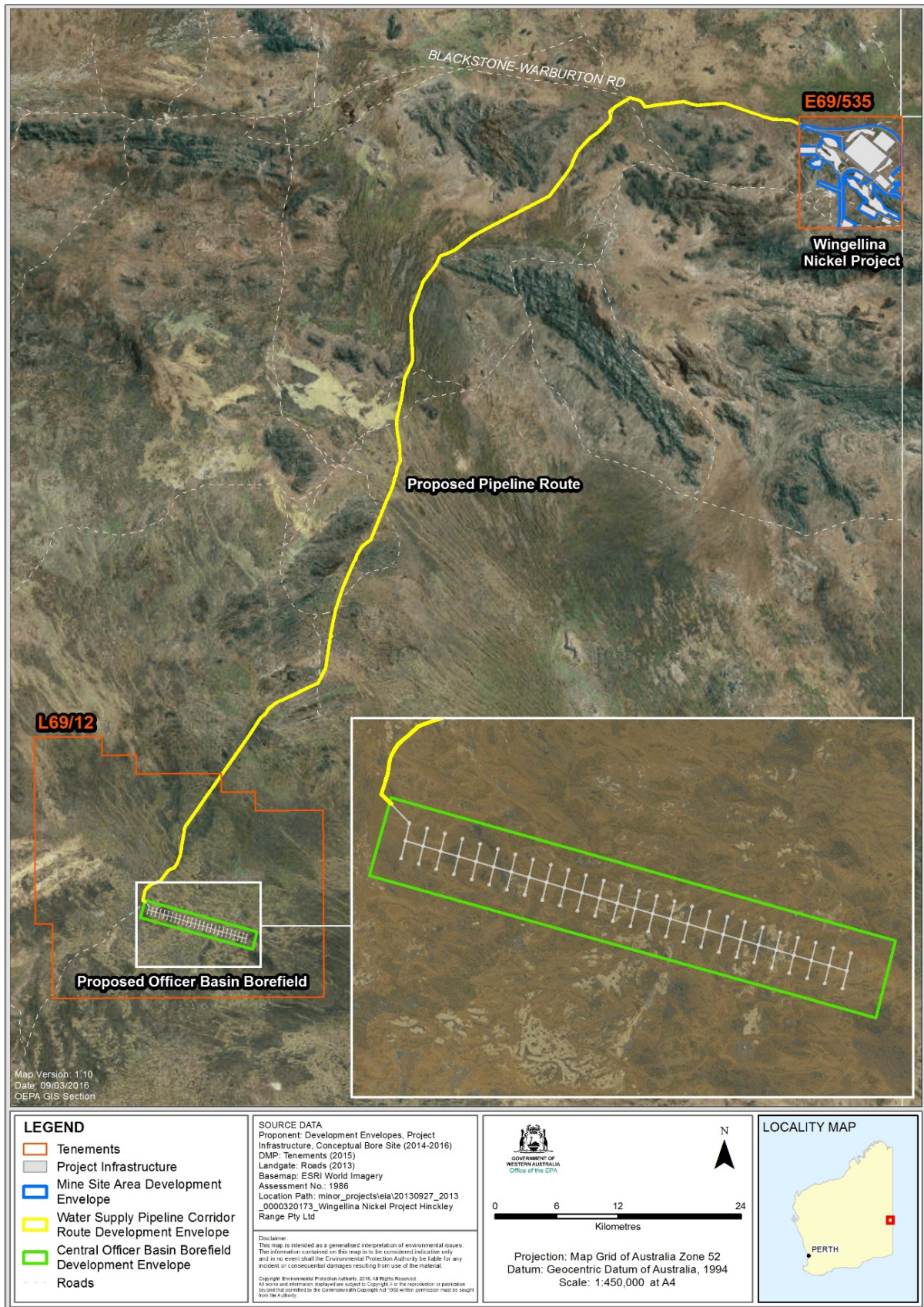


Figure 2: Central Officer Basin Borefield and Water Supply Pipeline Corridor Route Development Envelopes

Schedule 2

Coordinates defining the three Wingellina Nickel Project development envelopes are held by the Office of the Environmental Protection Authority:

- Mine Site Area Development Envelope – Document reference number (2016-1452564315106).
- Central Officer Basin Borefield Development Envelope – Document reference number (2015-1449805493763).
- Water supply Pipeline Corridor Route Development Envelope – Document reference number (2015-14409805495375).