

STATUS OF THIS DOCUMENT

This document has been produced by the Office of the Appeals Convenor as an electronic version of the original Statement for the proposal listed below as signed by the Minister and held by this Office. Whilst every effort is made to ensure its accuracy, no warranty is given as to the accuracy or completeness of this document. The State of Western Australia and its agents and employees disclaim liability, whether in negligence or otherwise, for any loss or damage resulting from reliance on the accuracy or completeness of this document. Copyright in this document is reserved to the Crown in right of the State of Western Australia. Reproduction except in accordance with copyright law is prohibited.

Published on 21 November 2007

Statement No. 756

**STATEMENT THAT A PROPOSAL MAY BE IMPLEMENTED
(PURSUANT TO THE PROVISIONS OF THE
ENVIRONMENTAL PROTECTION ACT 1986)**

**MESA A / WARRAMBOO IRON ORE PROJECT
43 KM WEST OF PANNAWONICA, SHIRE OF ASHBURTON**

Proposal: The proposal is to mine iron ore at Mesa A / Warrambo in the Robe Valley, Pilbara. The proposal involves the development of mine pits at Mesa A and Warrambo; a primary sizer processing plant; associated mine infrastructure; and the construction of a rail line to link into existing Mesa J mining operations.

Proponent: Robe River Mining Co. Pty. Ltd.

Proponent Address: 152-158 St George's Terrace, PERTH WA 6000

Assessment Number: 1574

Reports of the Environmental Protection Authority: Bulletins 1264 and 1251

The proposal referred to in the above reports of the Environmental Protection Authority may be implemented. The implementation of that proposal is subject to the following conditions and procedures:

1 Proposal Implementation

1-1 The proponent shall implement the proposal as documented and described in schedule 1 of this statement subject to the condition and procedures of this statement.

2 Proponent Nomination and Contact Details

2-1 The proponent for the time being nominated by the Minister for the Environment under sections 38(6) or 38(7) of the *Environmental Protection Act 1986* is responsible for the implementation of the proposal.

- 2-2 The proponent shall notify the Chief Executive Officer of the Department of Environment and Conservation (CEO) of any change of the name and address of the proponent for the serving of notices or other correspondence within 30 days of such change.

3 Time Limit of Authorisation

- 3-1 The authorisation to implement the proposal provided for in this statement shall lapse and be void within five years after the date of this statement if the proposal to which this statement relates is not substantially commenced.
- 3-2 The proponent shall provide the CEO with written evidence which demonstrates that the proposal has substantially commenced on or before the expiration of five years from the date of this statement.

4 Compliance Reporting

- 4-1 The proponent shall submit to the CEO environmental compliance reports annually reporting on the previous twelve-month period, unless required by the CEO to report more frequently.
- 4-2 The environmental compliance reports shall address each element of an audit program approved by the CEO and shall be prepared and submitted in a format acceptable to the CEO.
- 4-3 The environmental compliance reports shall:
1. be endorsed by signature of the proponent's Managing Director or a person, approved in writing by the CEO, delegated to sign on behalf of the proponent's Managing Director;
 2. state whether the proponent has complied with each condition and procedure contained in this statement;
 3. provide verifiable evidence of compliance with each condition and procedure contained in this statement;
 4. state whether the proponent has complied with each key action contained in any environmental management plan or program required by this statement;
 5. provide verifiable evidence of conformance with each key action contained in any environmental management plan or program required by this statement;
 6. identify all non-compliances and non-conformances and describe the corrective and preventative actions taken in relation to each non-compliance or non-conformance;

7. review the effectiveness of all corrective and preventative actions taken;
and
 8. describe the state of implementation of the proposal.
- 4-4 The proponent shall make the environmental compliance reports required by condition 4-1 publicly available in a manner approved by the CEO.

5 Troglobitic Fauna Monitoring

- 5-1 Prior to commencement of productive mining (See note 3 below), the proponent shall prepare and submit a Troglobitic Fauna Monitoring Program for approval of the Department of Environment and Conservation.

The objective of this Program is to gather information about the response of troglobitic fauna species and populations to direct and indirect impacts of mining, both during the mining process and after mining has ceased.

- 5-2 The Troglobitic Fauna Monitoring Program required by condition 5-1 shall incorporate periodic sampling of:

1. troglobitic fauna species and populations; and
2. key habitat parameters, including humidity within the underground spaces which form the habitat of the troglobitic fauna;

and shall provide for studies on:

3. the impacts of blasting and mining on the integrity of the troglobitic fauna habitat; and
4. the effectiveness of re-creating troglobitic fauna habitat through such measures as replacement of waste rock.

- 5-3 The proponent shall implement the Troglobitic Fauna Monitoring Program required by condition 5-1 before the start of productive mining and shall continue through the active mining phase of the project and into the post-mining phase, until such time as the CEO determines that monitoring may be discontinued.

- 5-4 The proponent shall make the Troglobitic Fauna Monitoring Program required by condition 5-1 publicly available in a manner approved by the CEO.

- 5-5 The proponent shall report annually to the CEO
1. the results of the monitoring program, and
 2. based on the results of that monitoring, an assessment of the risk to the survival of remaining populations of troglobitic fauna.

- 5-6 Should the monitoring show that the risk to these populations is increasing, the proponent is required to develop and implement mitigation measures to reduce that risk to the requirements of the Minister.

6 Troglobitic fauna habitat to be retained under the pit floor after mining

- 6-1 Prior to commencement of productive mining, the proponent shall provide to the Department of Environment and Conservation (DEC) an accurate 3-dimensional plan of the proposed final contours of the mine pit following mining and rehabilitation that would ensure the depth of material suitable for troglobitic fauna habitat that would be retained under the pit floor after mining would be as proposed and shown in Figure 3.
- 6-2 The proponent is required to carry out works consistent with the plan referred to in Condition 6-1 unless otherwise authorised under condition 6-6.
- 6-3 12 months after commencement of productive mining and every 12 months after that the proponent is to carryout an annual audit to determine the actual pit shell contours for the area of the project where mining and rehabilitation has been completed and compare that to the plan referred to in Condition 6-1. In locations where the actual pit shell is deeper than the plan referred to in Condition 6-1 (operational error), the proponent is to carryout such remedial works as to return the removed habitat.
- 6-4 Any operational error referred to in Condition 6-3 is to be no more than 2m and that the total area of mining that is subject to operation error in any one year should not exceed 5% of the actual area mined in any one year.
- 6-5 Within 15 months of commencement of productive mining and every 12 months after that the proponent is to report to the DEC on
1. how the actual pit shell contours for the area of the project where mining and rehabilitation has been completed and any remediation required by Condition 6-3 has been carried out compares with the planned pit shell following any remedial works, and
 2. the extent of any operations errors that occurred in the reporting period.
- 6-6 The CEO may agree to minor changes to the plan referred to in Condition 6-1 if the proponent can demonstrate that such a change is consistent with, or provides more troglobitic fauna habitat than, that proposed to be retained under the pit floor after mining shown in Figure 3.

7 Protection of the Sand Sheet Vegetation Community

- 7-1 Prior to ground-disturbing activity and until such time as the CEO determines, the proponent shall ensure that the Sand Sheet Vegetation Community as shown in Figure 2 is not significantly adversely affected through either direct or indirect impacts from the implementation of the proposal.

- 7-2 The proponent shall carry out a suitable program of environmental monitoring to ensure that the Sand Sheet Vegetation Community is not adversely affected by either direct or indirect impacts of the proposal.

This monitoring program shall commence prior to ground-disturbing activity and continue until such time as the CEO determines that monitoring may be discontinued.

- 7-3 In the event that monitoring referred to in condition 7-2 detects adverse direct or indirect impacts on the Sand Sheet Vegetation Community resulting from the proposal, the proponent shall take prompt remedial action and shall advise the CEO of the action taken as soon as practicable.

8 Mine Closure and Rehabilitation

- 8-1 Prior to commencement of productive mining, the proponent shall prepare and submit a Mine Closure and Rehabilitation Plan for approval of the Department of Environment and Conservation.

The proponent shall consult with the Department of Industry and Resources in the preparation of this plan.

The objectives of this Plan are:

1. To ensure that an intact Mining Exclusion Zone (MEZ) is retained as indicated in Figure 2;
 2. To ensure that waste rock is carefully placed after mining both to protect and support any projecting “fingers” of rock and to maximise survival of, and possible re-colonisation by, troglobitic fauna;
 3. To ensure that an adequate mass of intact material suitable for troglobitic fauna habitat is retained under the pit floor after mining and which is contiguous with the MEZ. This mass of material below the pit floor is to be a continuous block of material, not less than 15 metres deep and containing a total volume of suitable material not less than the volume of the MEZ. This mass of material below the pit floor is to retain adequate connectivity to the MEZ to allow movement of troglobitic fauna between the material below the pit floor and the MEZ; and
 4. To provide successful progressive rehabilitation of all areas disturbed by mining with vegetation composed of native species of local provenance.
- 8-2 The proponent shall implement the Mine Closure and Rehabilitation Plan required by condition 8-1 until such time as the CEO determines that the proponent’s mine closure and rehabilitation responsibilities have been fulfilled.
- 8-3 The proponent shall make the Mine Closure and Rehabilitation Plan required by condition 8-1 publicly available in a manner approved by the CEO.

9. Mining Exclusion Zone (MEZ)

- 9-1 Prior to productive mining, the proponent is to lodge with the CEO data, including in an appropriate Geographic Information System (GIS) format, which accurately depicts the Mining Exclusion Zone (MEZ) shown in Figure 2.
- 9-2 The proponent shall ensure that the mining activities are carried out so that the MEZ as defined by condition 9-1 is not mined and not affected by mining activities, other than minor unintended operational errors.
- 9-3 Any minor unintended operational errors referred to in Condition 9-2 shall be less than 5m and in any one year should not exceed 5% of the MEZ isolated because of mining.
- 9-4 In locations where the MEZ is less wide than as required by Condition 9-2 the proponent is to carryout such remedial works as to return the removed habitat.
- 9-5 The proponent shall report annually to the CEO, including in an appropriate Geographic Information System (GIS) format, the geographic extent of the MEZ isolated because of mining in that year and how that compares with the data provide as part of Condition 9-1.

Notes

1. The Minister for the Environment will determine any dispute between the proponent and the Environmental Protection Authority or the Department of Environment and Conservation over the fulfilment of the requirements of the conditions.
2. The proponent is required to apply for a Works Approval and Licence for this project under the provisions of Part V of the *Environmental Protection Act 1986*.
3. “Productive mining” means the mining of shippable ore.
4. The annual reporting required of Conditions 5-5, 6-5 and 9-5 may be included as one report to the CEO.

David Templeman MLA
MINISTER FOR THE ENVIRONMENT; CLIMATE CHANGE; PEEL

Schedule 1

The Proposal (Assessment No. 1574)

General Description

The proposal is to mine iron ore at Mesa A / Warramboos in the Robe Valley, Pilbara. The proposal involves the development of mine pits at Mesa A and Warramboos, a primary sizer processing plant, associated mine infrastructure and the construction of a rail line to link into existing Mesa J mining operations.

The original proposal is described in section 3 of the proponent's Public Environmental Review document, *Mesa A / Warramboos Iron Ore Project: Public Environmental Review*, Strategen (July 2006). Reference should also be made to the information provided in Environmental Protection Authority Bulletin 1251 in relation to modifications made to the proposal between the release of the Public Environmental Review document and release of Bulletin 1251.

In an appeal against the Environmental Protection Authority's report and recommendations as set out in Bulletin 1251, the proponent further modified the proposal such that the area of escarpment to be retained after mining (the Mining Exclusion Zone or "MEZ") to be as defined in Condition 9. The Minister, in determining the appeal, remitted the proposal to the EPA for re-assessment of the factors 'Subterranean Fauna' and 'Landforms, Closure Planning and Rehabilitation'. Bulletin 1264 contains the EPA's re-assessment of these two factors.

Other aspects of the proposal remain as described in the Public Environmental Review document (but including the modifications as noted in Bulletin 1251).

Summary Description

A summary of the key proposal characteristics is presented in Table 1 below.

Table 1 – Summary of Key Proposal Characteristics

Element	Description
Project life	Approximately 10 years
Clearing of native vegetation	Not more than 2900 hectares (Note: vegetation in the Mining Exclusion Zone to be retained other than that required to be cleared for haul road and associated infrastructure as shown in Figure 4.)
Ore location	Above water table
Processing	Primary sizer located at Mesa A
Transport of product	By road from Warramboos to Mesa A By rail (on new spurline) to existing Mesa J mine

Figures (attached)

Figure 1: Regional Location of Mesa A / Warramboos Mine Site.

Figure 2: Mesa A updated Mining Exclusion Zone and cross-section locations.

- Figure 3: Proposed depth of material suitable for troglobitic fauna habitat that would be retained under the pit floor after mining
- Figure 4: Mine layout showing MEZ and the 2 breaks in the MEZ for infrastructure.

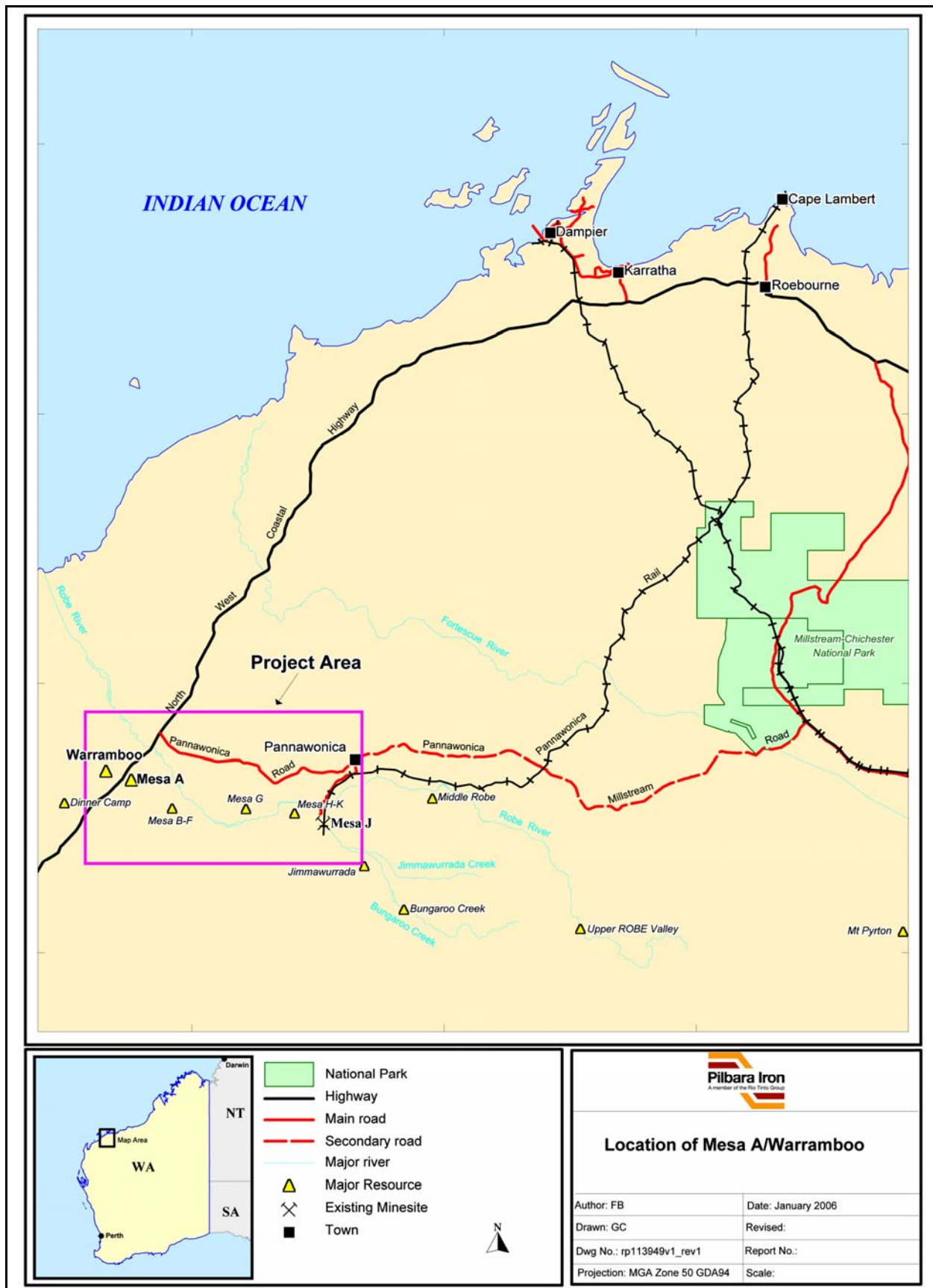


Figure 1: Regional Location of Mesa A / Warrambo Mine Site

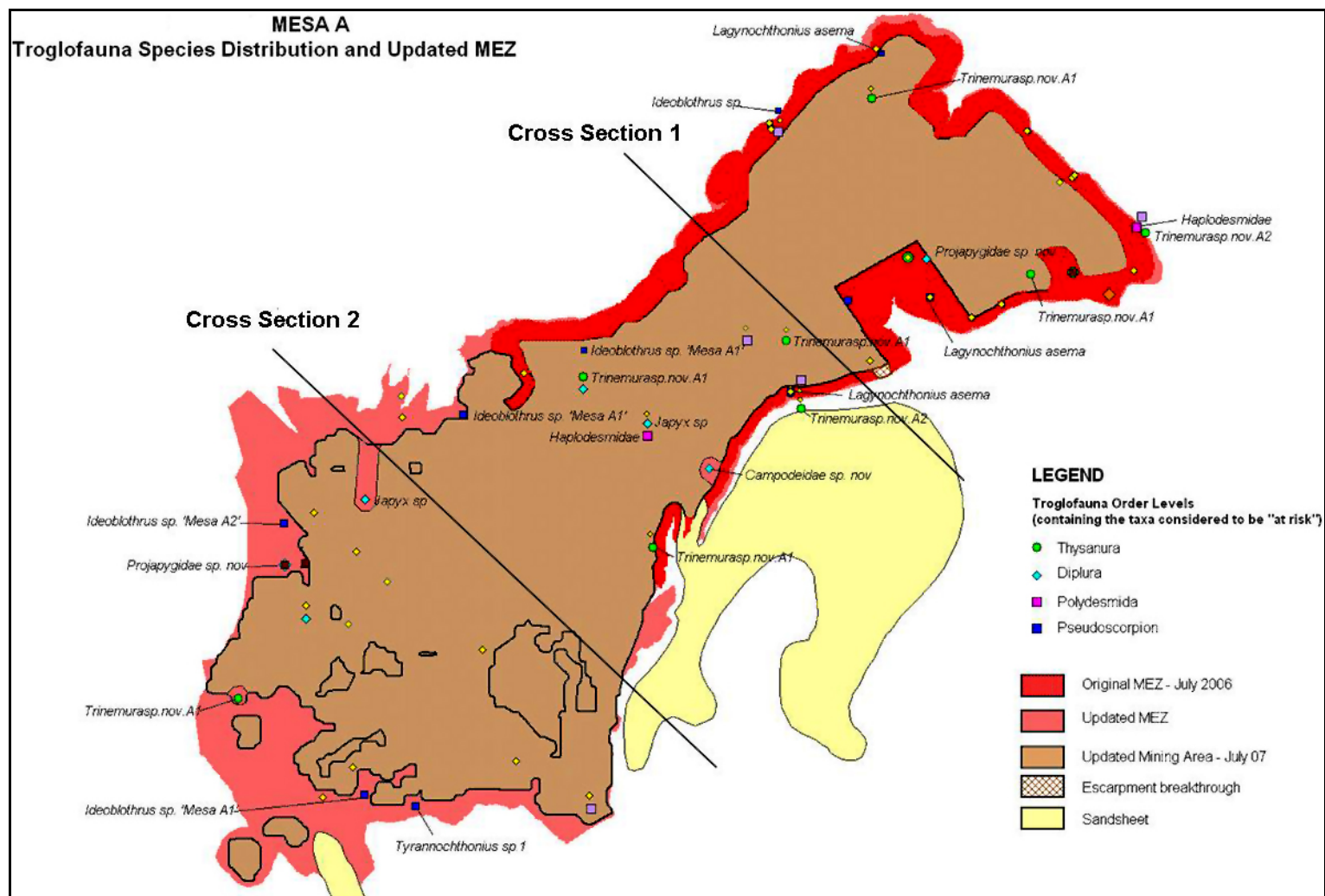


Figure 2: Mesa A updated MEZ and cross-section locations

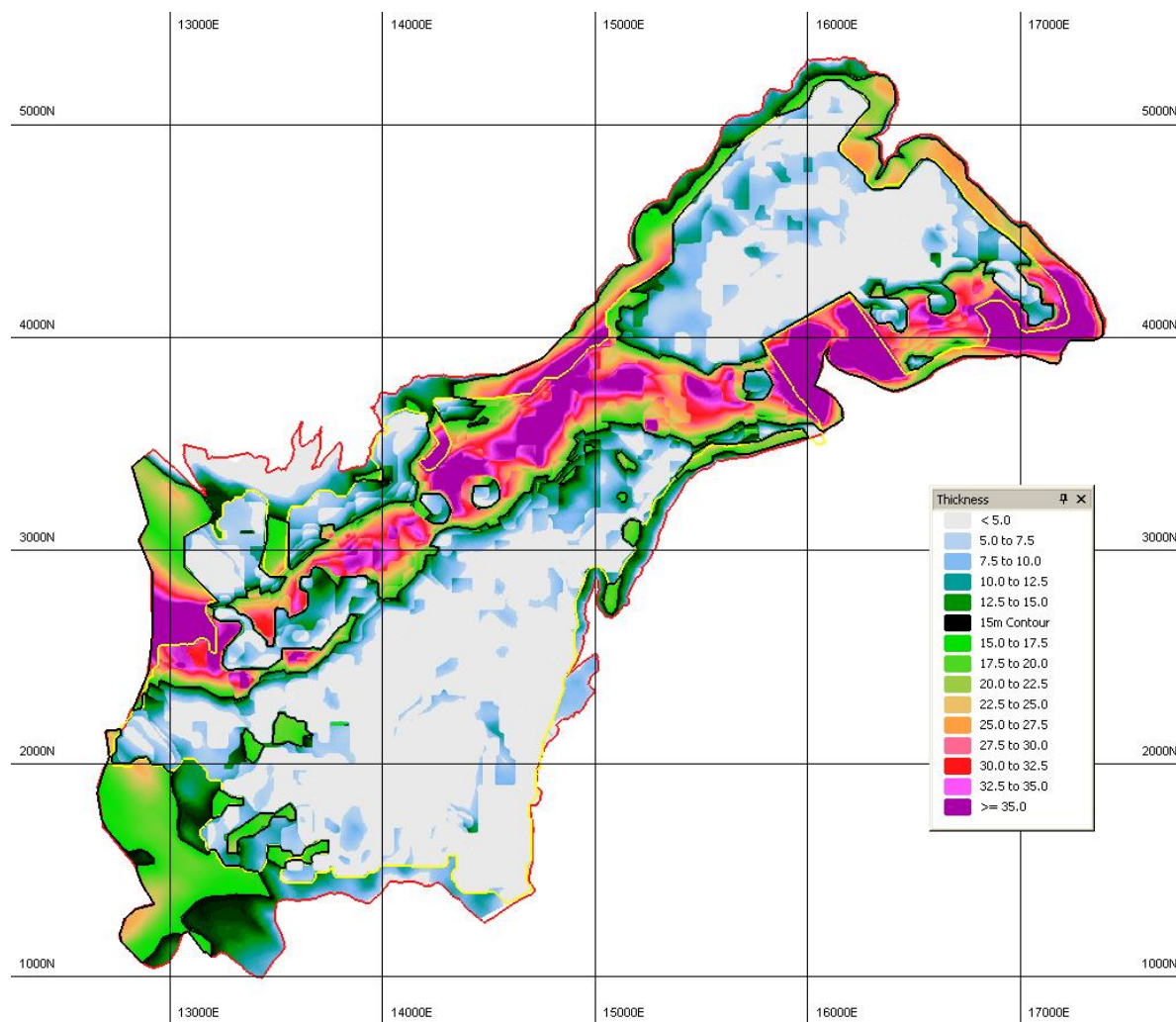


Figure 3: *Proposed depth of material suitable for troglobitic fauna habitat that would be retained under the pit floor after mining*

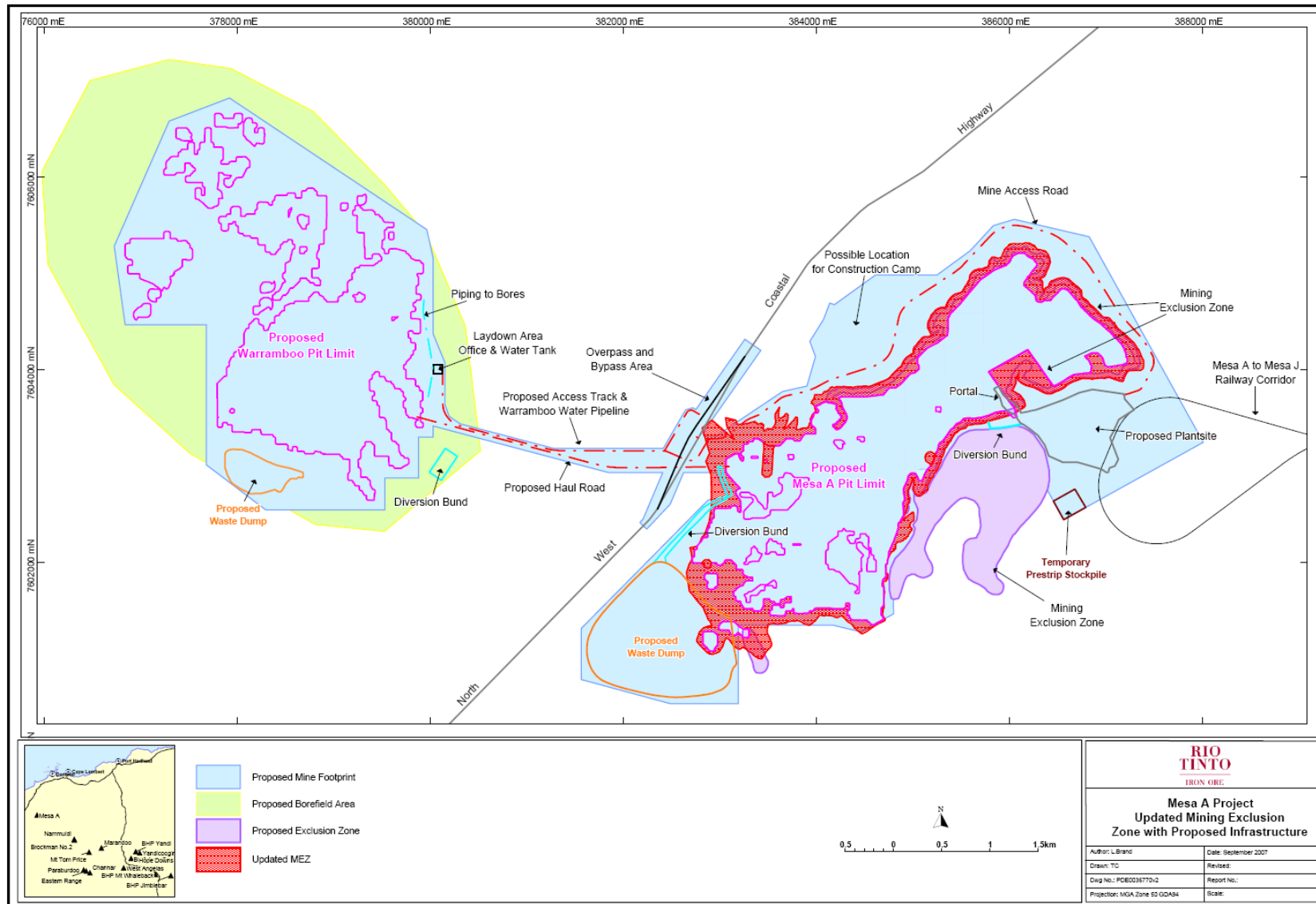


Figure 4: Mine layout showing MEZ and the 2 breaks in the MEZ for infrastructure

Attachment 1 to Statement 756

Change to Proposal

Proposal: Mesa A/Warramboe Iron Ore Project, 43 km west of Pannawonica, Shire of Ashburton

Proponent: Robe River Mining Co. Pty. Ltd

Change:

Components of original Proposal as implemented:

Component	Quantities/Description
Orientation of the escarpment breakthrough portal	As shown in Figure 1 (attached). Width 50 m

Components of changed Proposal:

Component	Quantities/Description
Orientation of the escarpment breakthrough portal	As shown in Figure 2 and 3 (attached). Width 110m. Additional clearing of 0.71 ha of vegetation with the potential to disturb up to an additional 0.3 ha in the buffer area.

Figure 1: Site layout as approved

Figure 2: Proposed change to site layout

Figure 3: Proposed change to original portal

**Approved under delegation
from Minister for the Environment:**

Delegation under section 18 of
the Environmental Protection Act
Dated 24 November 2004

S45C Approval Date: 25.7.08

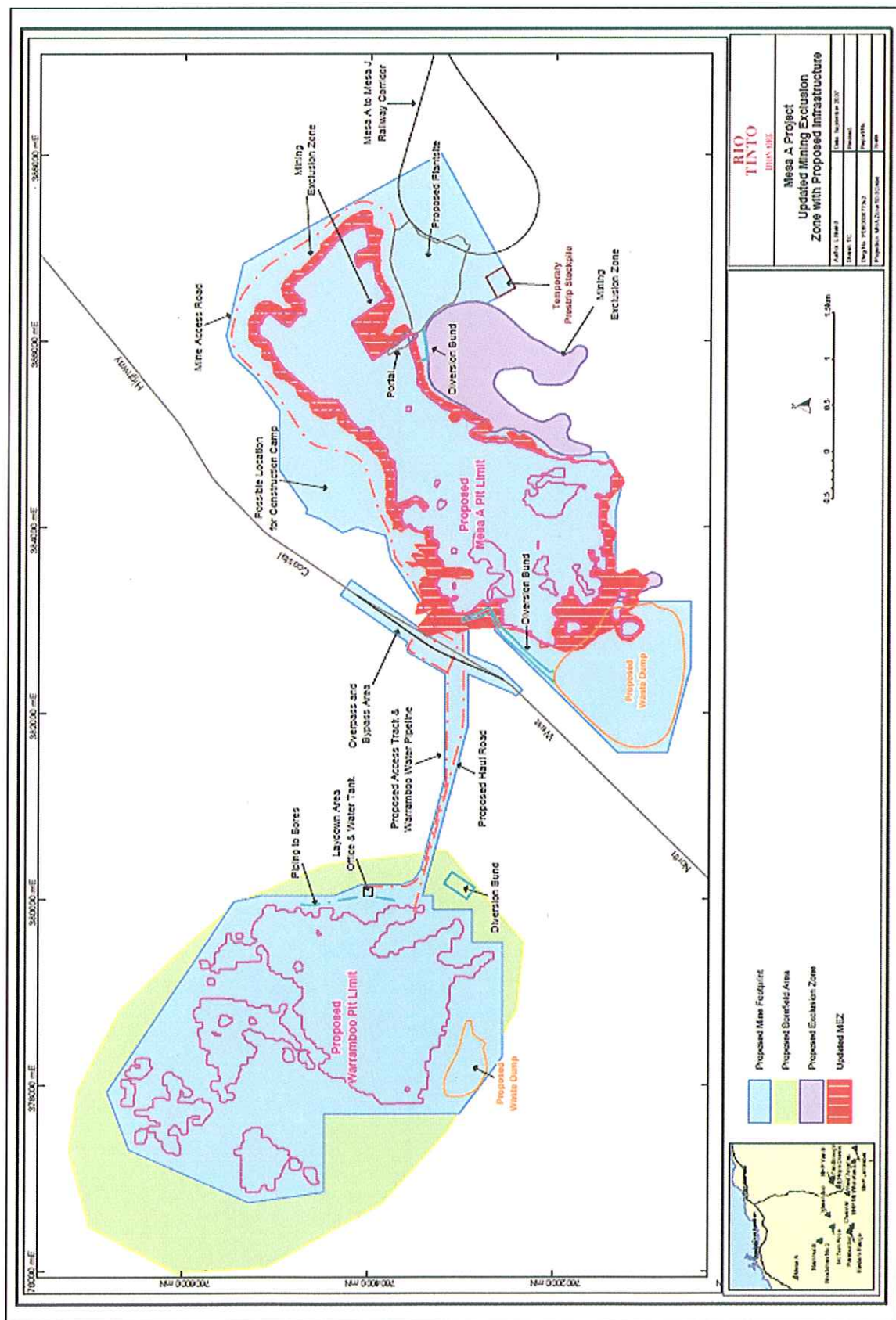


Figure 1: Site layout as approved

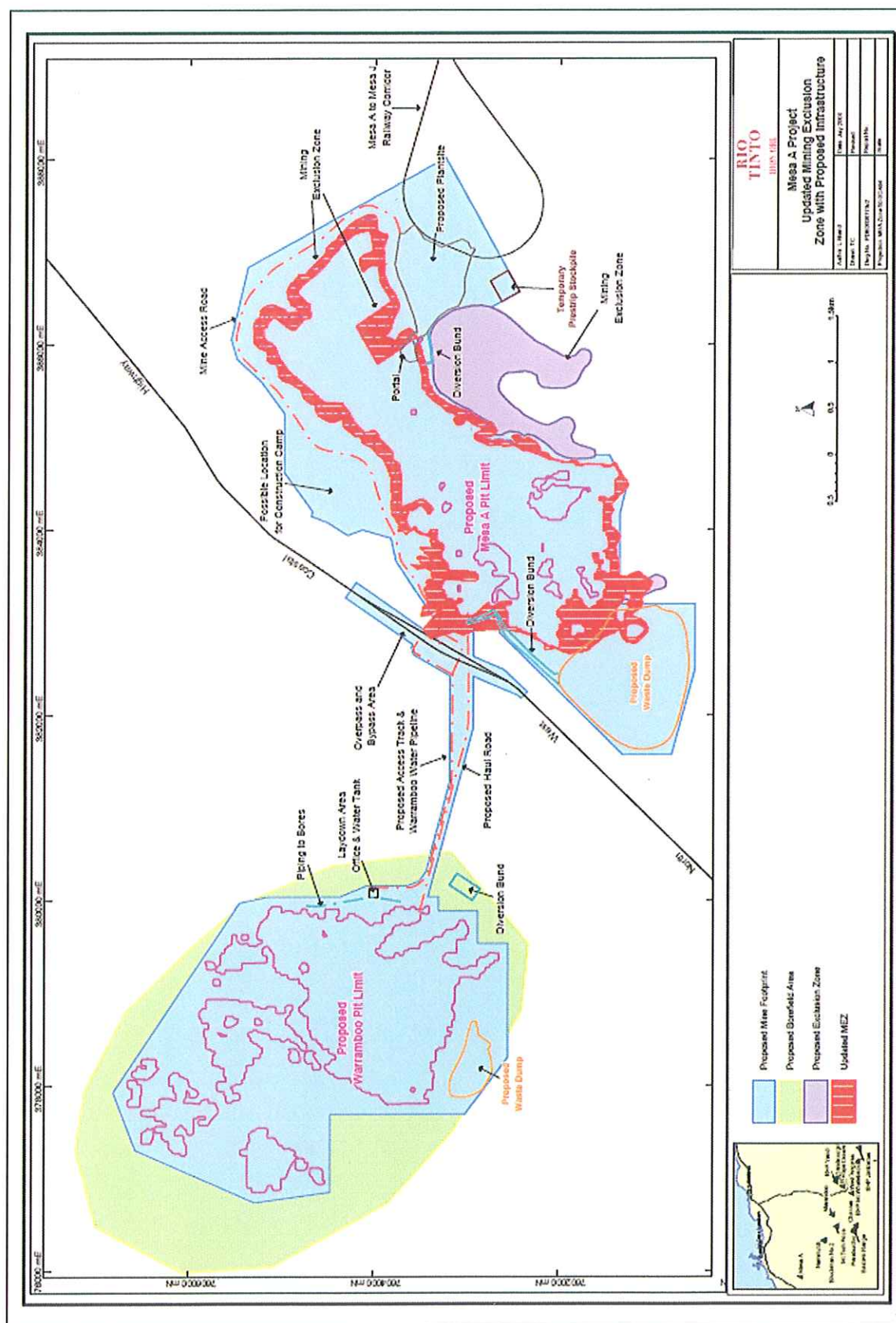


Figure 2: Proposed change to site layout

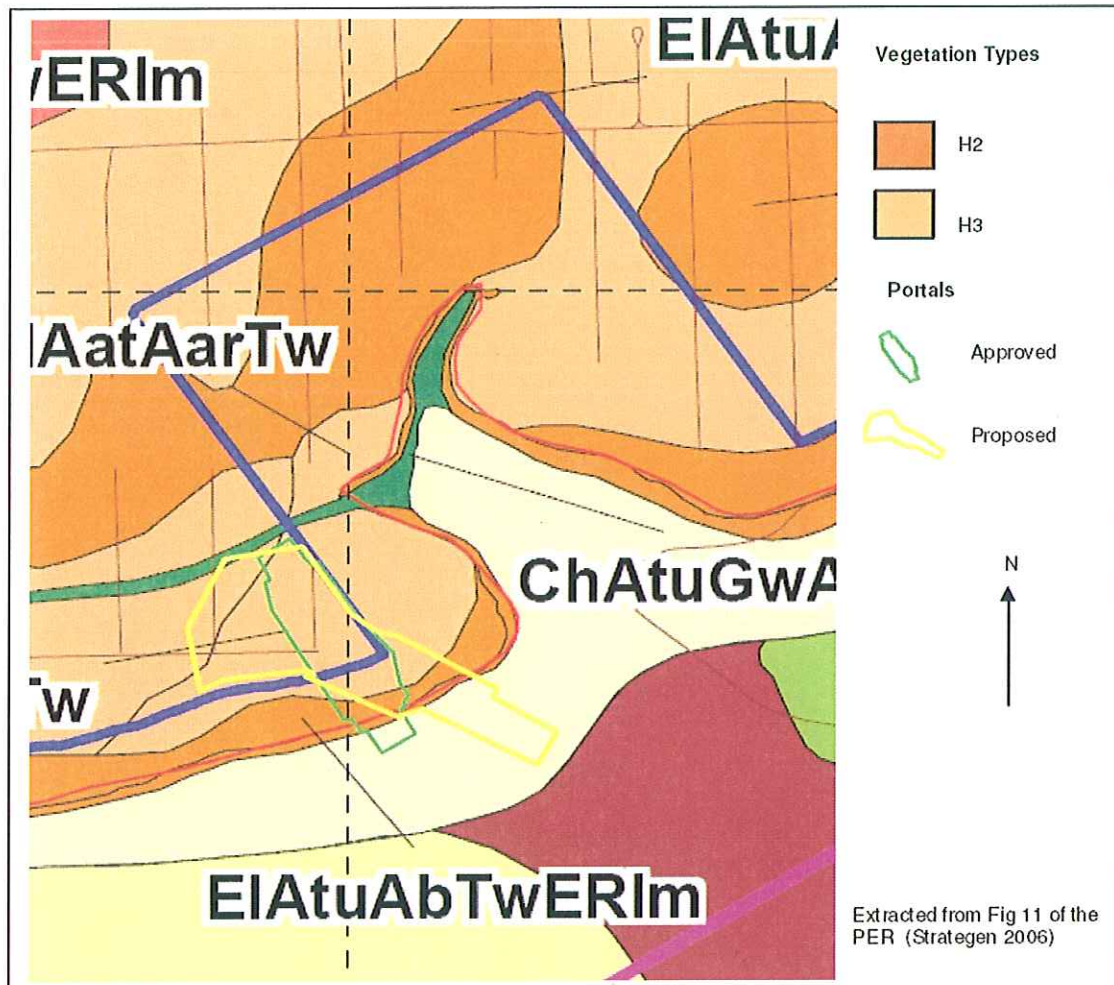


Figure 3: Proposed change to original portal

Attachment 2 to Statement 756

Change to Proposal

Proposal: Mesa A / Warramboe Iron Ore Project 43 km West of Pannawonica, Shire of Ashburton

Proponent: Robe River Mining Co. Pty. Ltd.

Change: Alteration to the mining pit shell and the MEZ at Mesa A, plus an increase to the groundwater abstraction rate at the Warramboe borefield

Key Characteristics Table:

Element	Description of proposal	Description of approved change to proposal
Project Life	Approximately 10 years	Approximately 10 years
Clearing of native vegetation	Not more than 2900 hectares (Note: vegetation in the Mining Exclusion Zone to be retained other than that required to be cleared for haul road and associated infrastructure as shown in figure 4.)	Not more than 2900 hectares (Note: vegetation in the Mining Exclusion Zone to be retained other than that required to be cleared for haul road and associated infrastructure as shown in figures 2 & 4.)
Ore location	Above water table	Above water table
Processing	Primary sizer located at Mesa A	Primary sizer located at Mesa A
Transport of Product	By road from Warramboe to Mesa A By rail (on new spurline) to existing Mesa J mine	By road from Warramboe to Mesa A By rail (on new spurline) to existing Mesa J mine
Orientation of the escarpment breakthrough portal	As shown in Figure 2 and 3 (attached). Width 110m. Additional clearing of 0.71 ha of vegetation with the potential to disturb up to an additional 0.3 ha in the buffer area.	As shown in Figure 2 and 3 (attached). Width 110m. Additional clearing of 0.71 ha of vegetation with the potential to disturb up to an additional 0.3 ha in the buffer area.
dewatering	1.5 Gigalitres per annum	3 Gigalitres per annum

List of Figures:

Figure 2 (updated) – Mesa A Proposed Pit Shell and Safety Road

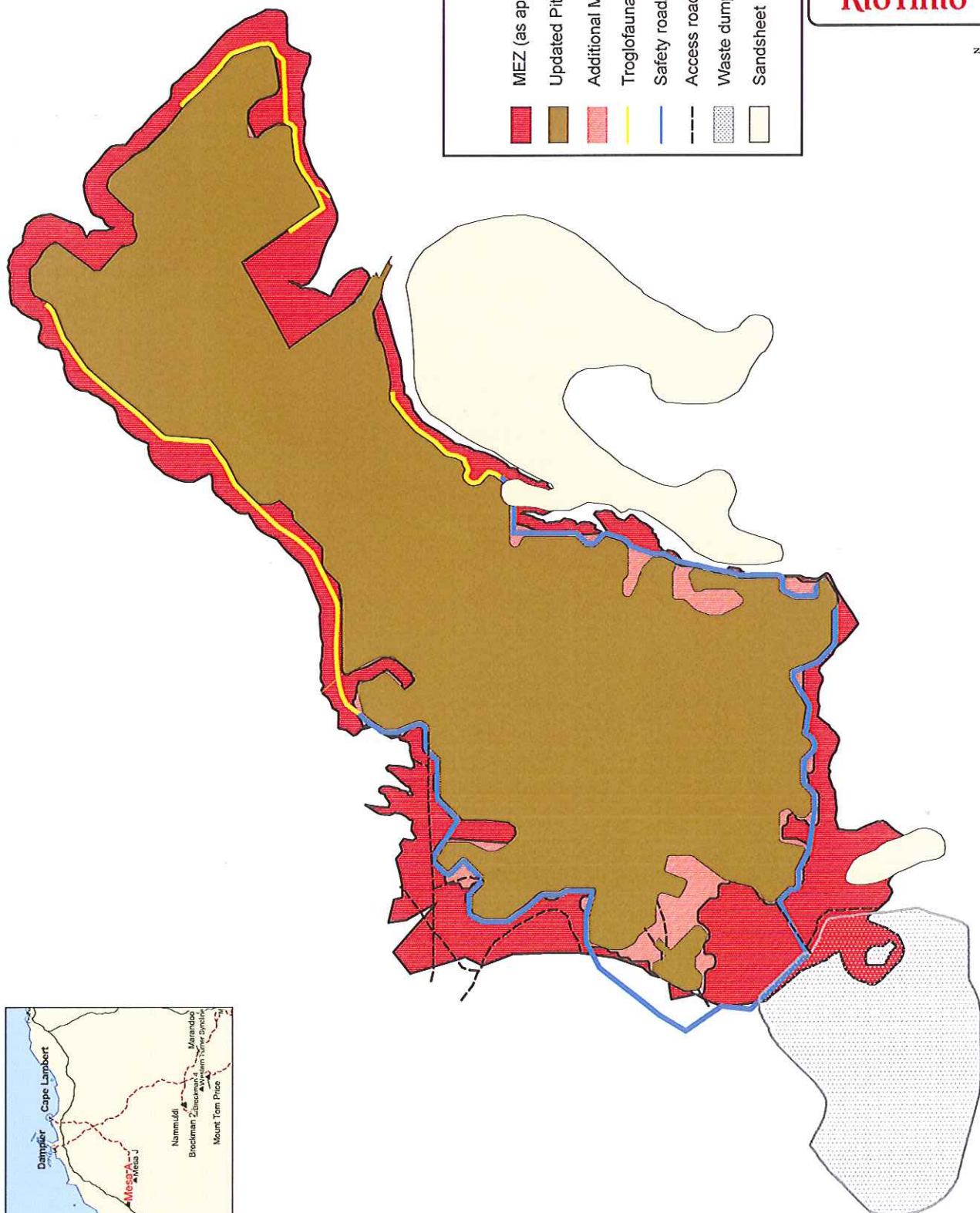
Figure 3 (updated) – Pitshell V-13 (3D pitshell contours post-mining, pre-rehabilitation)

Dr Paul Vogel

CHAIRMAN

Environmental Protection Authority
under delegated authority

Approval date: 17 December 2010



LEGEND

- MEZ (as approved in MS756)
- Updated Pit shell (V_13)
- Additional MEZ (Dec 2010)
- Troglofauna access roads
- Safety road/abandonment bund
- Access roads on MEZ
- Waste dump location
- Sandsheet

MESA A
Updated Pit Shell (V_13)
and MEZ

RioTinto

FIGURE 2

Drawn: M.J.B.
Date: Nov 2010
Proj:



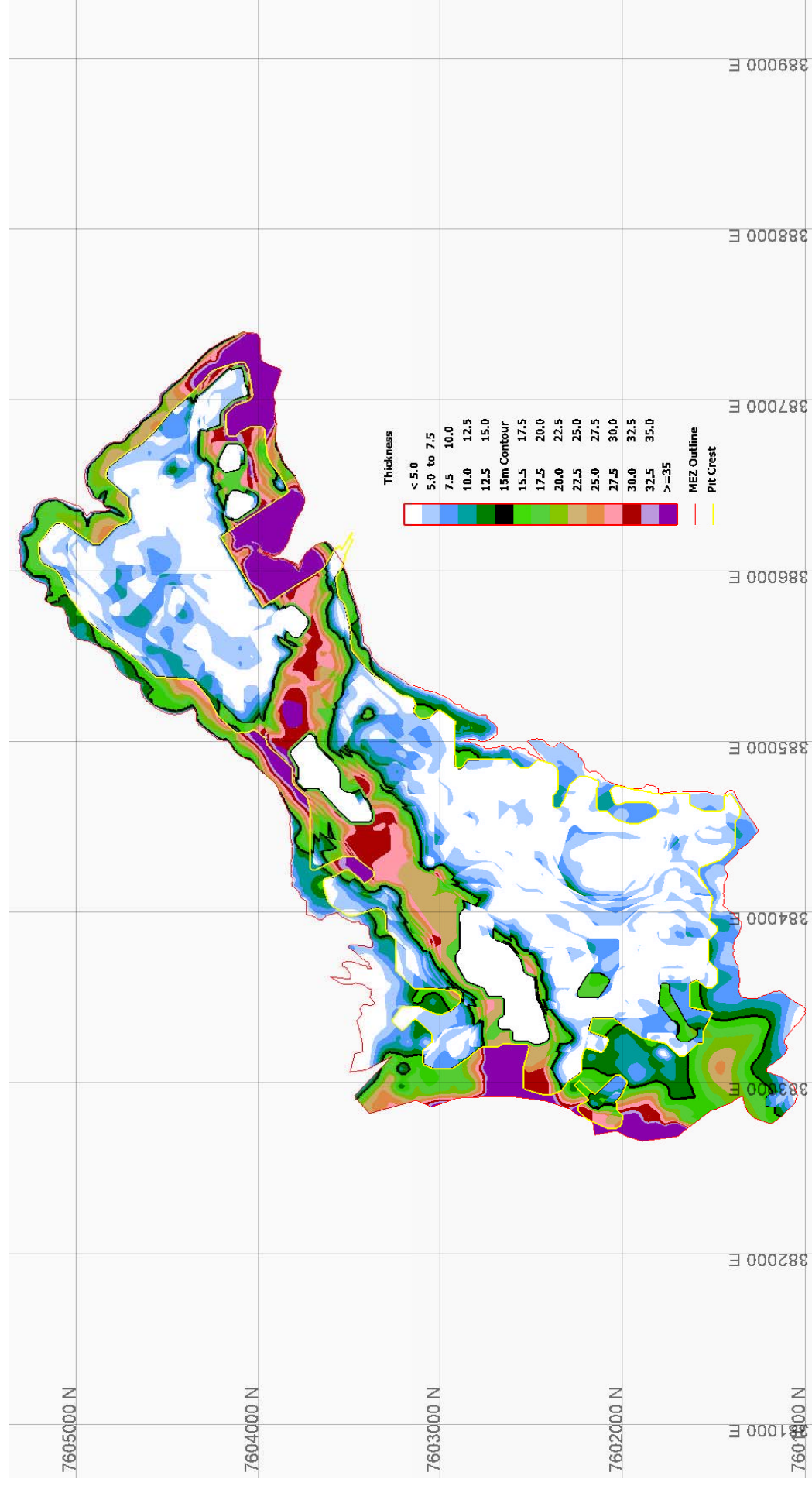


Figure 3: Depth of material suitable for troglobitic habitat which would be retained under the pit floor after mining with Pit shell V_13

Attachment 3 to Ministerial Statement 756

Change to proposal under s45C of the *Environmental Protection Act 1986*

Proposal: Mesa A Remnant Mining Operation

Proponent: Rio Tinto Iron Ore Pty Ltd

Change: Increase in disturbance footprint and removal of 10 year mine life limit.

Key Characteristics Table: This table replaces Table 1 in Schedule 1 as amended by Attachment 2 and Attachment 3

<u>Element</u>	<u>Description of proposal</u>	<u>Description of approved change to proposal</u>
General		
Project life	Approximately 10 years	Removed as not a key characteristic relevant to the environment
Clearing of native vegetation	Not more than 2900 hectares (Note: L vegetation in the Mining Exclusion Zone to be retained other than that required to be cleared for haul road and associated infrastructure as shown in figure 2 & 4.)	Not more than 3680 ha (with the exception of clearing in Mining Exclusion Zone, MEZ, other than the approved portal breakthrough and other approved infrastructure as per Figure 2 and Figure 4)
Ore location	Above watertable	Removed as not a significant characteristic relevant to the environment. Replaced with 'Mining depth'
Processing	Primary sizer located at Mesa A	Removed as not a key characteristic relevant to the environment
Transport of Product	By road from Warrambo to Mesa A By rail (on new spurline) to existing Mesa J mine	Removed as not a key characteristic relevant to the environment
Mining depth	Not in original schedule	Above watertable
Orientation of escarpment breakthrough portal	As shown in Figure 2 and 3 (attached). Width 110m. Additional clearing of 0.71 ha of vegetation with the potential to disturb up to an additional 0.3 ha in the buffer area	Removed and incorporated into the 'Clearing of native vegetation' element
dewatering	3 Gigalitres per annum	Removed as managed under <i>Rights in Water and Irrigation Act 1914</i>

Note: Text in **bold** in the Key Characteristics Table, indicates change/s to the proposal.

List of Replacement Figures and Schedules:

**Figures 1, 2, and 3 of Attachment 1 are deleted and replaced with Figure 4 -
Approved Mine footprint and Warrambo Expansion**

Dr Paul Vogel

CHAIRMAN

Environmental Protection Authority
under delegated authority

Approval date: 27 March 2013

Figure 4: Approved Mine Footprint and Warrambo Expansion

LEGEND

- Approved Mine Footprint (as amended)
- Borefield Area
- Exclusion Zone
- Approved Mez (as amended)
- Warrambo Expansion Area
- Approved Pit Extension
- Approved Waste Dump Extension
- Approved Portal Boundary

SOURCE DATA
Rio Tinto: All proposal data
Landgate: Roads (2004)

Location Path: I:\epas\minor_projects\compliance\20130218_MesaK_s45c
Map Create Date: 12/03/2013
Map Created By: G.Burke

LOCALITY MAP



0 500 1,000 2,000
Metres

Projection: Map Grid of Australia Zone 50
Datum: Geocentric Datum of Australia, 1994
Scale: 1:55,000

Disclaimer:
This map is intended as a generalised interpretation of environmental issues. The information contained on this map is to be considered indicative only and in no event shall the Environmental Protection Authority be liable for any incident or consequential damages resulting from use of the material.
Copyright: Environmental Protection Authority, 2013. All Rights Reserved.
All data and information contained herein are subject to Copyright. No reproduction or publication beyond that permitted by the Commonwealth Copyright Act 1959 without permission is permitted.

