

THIS DOCUMENT

This document has been produced by the Department of Water and Environmental Regulation as an electronic version of the original Statement for the proposal listed below as signed by the Chair of the Environmental Protection Authority under delegation from the Minister for Environment and held by the Department of Water and Environmental Regulation. Whilst every effort is made to ensure its accuracy, no warranty is given as to the accuracy or completeness of this document.

The State of Western Australia and its agents and employees disclaim liability, whether in negligence or otherwise, for any loss or damage resulting from reliance on the accuracy or completeness of this document.

Copyright in this document is reserved to the Crown in right of the State of Western Australia. Reproduction except in accordance with copyright law is prohibited.

Published on: 28 August 2025

Statement No. 1036 as amended

**AMENDMENT OF AN APPROVED PROPOSAL AND CONDITIONS WITHOUT
INQUIRY OR ASSESSMENT
(*Environmental Protection Act 1986*)**

Perth-Darwin National Highway (Swan Valley Section)

Proposal: The proposal is to construct and operate a dual carriageway highway from the intersection of Tonkin Highway and Reid Highway in Malaga to the intersection of the Great Northern Highway and Brand Highway in Muchea.

Proponent: Commissioner for Main Roads Western Australia
Australian Business Number 50 860 676 021

Proponent Address: Don Aitken Centre, Waterloo Crescent
EAST PERTH WA 6004

Assessment Number: 1994 and 2188

Report of the Environmental Protection Authority: 1569 and 1652

Introduction: Pursuant to section 45C(1)(c) of the *Environmental Protection Act 1986*, an amendment to the proposal and to the implementation conditions was approved on (28 August 2025), and the amended proposal must be implemented in accordance with the following implementation conditions and procedures.

Note: A description of the proposal (the existing proposal approved on 20 September 2016, as amended by Ministerial Statement 1116 issued on 20 November 2019 and by the amendments approved on 28 August 2025) is contained in the Proposal Content Document (July 2025).

Conditions 1, 2, 3, 4, 5, 6, 7, 8, 9, 10, 11, 12, 13, 14, 15 and 16 of Ministerial statement 1036 issued on 20 September 2016 as amended by Ministerial statement 1116 issued on 20 November 2019 have been deleted and replaced with the following conditions and procedures:

Conditions and procedures

Part A: Proposal extent

Part B: Environmental outcomes, prescriptions and objectives

Part C: Environmental management plans and monitoring

Part D: Compliance and other conditions

PART A: PROPOSAL EXTENT**A1 Limitations and Extent of Proposal**

A1-1 The proponent must ensure that the proposal is implemented in such a manner that the following limitations or maximum extents are not exceeded:

Proposal element	Location	Maximum extent
Physical elements		
Development envelope	Figure 1.	1,012.81 ha
Clearing and disturbance	Within the development envelope shown in Figure 1.	792.3 ha of which up to 206 ha is native vegetation

PART B – ENVIRONMENTAL OUTCOMES, PRESCRIPTIONS AND OBJECTIVES

B1 Flora and Vegetation

B1-1 The proponent must ensure the implementation of the proposal achieves the following environmental outcomes:

- (1) **disturb** no more than the following environmental values:
 - (a) 116.3 **ha** of Bush Forever areas;
 - (b) 7.65 **ha** of Class A Nature Reserves, of which:
 - (i) 0.4 **ha** is Class A Nature Reserve 46920;
 - (ii) 0.2 **ha** is Class A Nature Reserve 46919;
 - (c) 32.6 **ha** of Gngangara-Moore River State Forest No. 65;
 - (d) 4 **ha** of **SCP 20a TEC**;
 - (e) 31.9 **ha** of *Caladenia huegelii* critical habitat;
 - (f) 1.6 **ha** of *Grevillea curviloba subsp. incurva* critical habitat;
 - (g) 4.1 **ha** of **Yanga vegetation complex**; and
 - (h) 14.6 **ha** of wetland vegetation from **Conservation Category Wetlands**; and
- (2) maintain or improve the condition of the remaining extent of **SCP 20a TEC** as shown in Figure 2.

B1-2 During **construction activities**, the proponent must:

- (1) undertake weed control and management to prevent the introduction or spread of **environmental weeds**;
- (2) implement hygiene protocols consistent with the *Management of Phytophthora cinnamomi for Biodiversity Conservation in Australia, Part 2 National Best Practice Guidelines* and subsequent versions as amended or replaced from time to time, to ensure *Phytophthora cinnamomi* is not introduced into disease free areas;
- (3) undertake dust control and management to ensure no **adverse impacts** to areas of retained flora and vegetation from dust; and
- (4) not undertake clearing or construct laydown areas or stockpiles within:
 - (a) the 50 **m** buffer of *Caladenia huegelii* individuals; or

- (b) the 10 m buffer of *Grevillea curviloba subsp. incurva* and *Darwinia foetida* individuals.

B1-3 The proponent must:

- (1) **rehabilitate** with locally native species:
 - (a) all areas of native vegetation **disturbed**, but not reasonably expected to be required for ongoing operations or other approved future development(s), within the development envelope; and
 - (b) the section of Beechboro Road North from Jules Steiner Memorial Drive to Gnangara Road, excluding that area required for ongoing operation of the road carriageway;
- (2) ensure the **rehabilitation** required by condition B1-3(1)(a):
 - (a) is implemented within twenty-four (24) months from the completion of **construction activities**; and
 - (b) achieves **pre-construction vegetation density**;
- (3) ensure the **rehabilitation** required by condition B1-3(1)(b) achieves the completion criteria within the approved **Condition Environmental Management Plan - Flora and Vegetation - Progressive Rehabilitation**; and
- (4) not plant known **black cockatoo foraging habitat** species, including but not limited to, *Banksia* spp., *Hakea* spp., *Grevillea* spp. and *Eucalyptus* spp. within ten (10) m of the constructed road carriageway.

B2 Terrestrial Fauna

B2-1 The proponent must ensure the implementation of the proposal achieves the following environmental outcome:

- (1) **disturb** no more than the following environmental values:
 - (a) 207.2 ha of *Zanda latirostris* (Carnaby's cockatoo) foraging habitat; and
 - (b) 120.5 ha of *Calyptorhynchus banksii naso* (forest red-tailed black cockatoo) foraging habitat.

B2-2 Prior to **construction activities**, the proponent must undertake the following actions to minimise impacts to terrestrial fauna:

- (1) within seven (7) days prior to clearing, using a **fauna handler** with experience in surveying for **black cockatoos**, inspect all **potential nesting trees** with **suitable hollows** within the proposal development

envelope to determine if any hollows are being used for nesting by **black cockatoos**;

- (2) if any hollows are in use by **black cockatoos**, the proponent shall not **disturb** the **nesting tree**, or vegetation within a ten (10) m radius of the **nesting tree**, until after the **black cockatoos** have naturally completed nesting and a **fauna handler** has verified that the hollow(s) are no longer being used by **black cockatoos**; and
- (3) using a **fauna handler**, undertake a trapping and relocation program for **ground-dwelling fauna** prior to clearing.

B2-3 During **construction activities**, the proponent must undertake the following actions to minimise impacts to terrestrial fauna:

- (1) ensure the presence of a **fauna handler** during clearing;
- (2) clear trapped vertebrate fauna from within open **trenches** using a **fauna handler**:
 - (a) prior to commencing **construction activities**; and
 - (b) no more than one hour prior to backfilling of **trenches**; and
- (3) immediately following clearing activities, install temporary fencing to limit vertebrate fauna movement into cleared or construction areas, inclusive of excavated areas and **trenches**.

B2-4 The proponent must design and construct **fauna crossings**, using best practice guidelines and in consultation with suitably qualified technical experts, at the following locations:

- (1) **Whiteman Park 2**; and
- (2) **Whiteman Park 3**.

B2-5 The proponent must ensure the **fauna crossings** required by condition B2-4 are:

- (1) designed to minimise the potential risk of predation;
- (2) able to be utilised by a variety of native fauna; and
- (3) of dimensions that can accommodate those fauna species expected to occur in the vicinity of the **fauna crossing**.

B3 Inland Waters

B3-1 The proponent must ensure the implementation of the proposal achieves the following environmental outcomes:

- (1) **disturb** no more than 14.6 ha of **Conservation Category Wetlands**;
- (2) no **adverse impact** to the water quality of the **GUWPCA**;
- (3) no **adverse impact** to the water quality of the Ellen Brook as confirmed by monitoring for a period of five years post construction;
- (4) no indirect impacts to *Communities of Tumulus Springs (Organic Mound Springs, Swan Coastal Plain)* and **Conservation Category Wetlands**;
- (5) no change to surface or groundwater quality within the **GUWPCA**;
- (6) predevelopment surface water flows to *Darwinia foetida*, and *Communities of Tumulus Springs (Organic Mound Springs, Swan Coastal Plain)* are maintained; and
- (7) the water quality and surface water flows of wetlands and/or watercourses within or adjacent to the development envelope reflect predevelopment condition.

B3-2 The proponent must not:

- (1) construct laydown areas, stockpiles or store chemicals:
 - (a) within fifty (50) m of **Conservation Category Wetlands**; or
 - (b) within the well head protection zones in the **GUWPCA**; and
- (2) construct infiltration basins, including bio-retention basins, within 100 m of drinking water production wells within the **GUWPCA**.

B4 Social Surroundings (Noise)

B4-1 The proponent must ensure the implementation of the proposal is consistent with *State Planning Policy 5.4 Road and Rail Noise*.

B5 Environmental Offsets

B5-1 The proponent must implement offsets to counterbalance the significant residual impacts of the proposal on the following environmental values:

- (1) **SCP 20a TEC**;
- (2) **Yanga vegetation complex**;
- (3) *Caladenia huegelii* critical habitat;
- (4) Bush Forever areas;
- (5) Class A Nature Reserves;
- (6) foraging habitat for *Zanda latirostris* (Carnaby's cockatoo);

- (7) foraging habitat for *Calyptorhynchus banksii naso* (forest red-tailed black cockatoo); and
- (8) **Conservation Category Wetlands.**

B5-2 The proponent must ensure the implementation of the offsets achieves the following environmental outcomes:

- (1) counterbalance the significant residual impacts to the environmental values identified in condition B5-1;
- (2) ensure **on-ground management** maintains or improves the conservation status of *Caladenia huegelii* at:
 - (a) Class A Nature Reserves 23756, 46919 and 46875; and
 - (b) Bush Forever Site 300;
- (3) protect, manage and/or rehabilitate for conservation or enhancement an area or areas of **SCP 20a TEC**, or habitat necessary to maintain or enhance **SCP 20a TEC**;
- (4) acquire, or fully fund the acquisition of, Lot 2091 Ippolo Road for the purpose of conservation to counterbalance the significant residual impacts to:
 - (a) Class A Nature Reserves;
 - (b) foraging habitat for *Zanda latirostris* (Carnaby's cockatoo); and
 - (c) foraging habitat for *Calyptorhynchus banksii naso* (forest red-tailed black cockatoo);
- (5) ensure **land acquisition, rehabilitation and/or on-ground management** is undertaken in an area or areas capable of protecting, managing and/or restoring for conservation or enhancement the following environmental values:
 - (a) **Yanga Vegetation Complex;**
 - (b) Bush Forever sites;
 - (c) foraging habitat for *Zanda latirostris* (Carnaby's cockatoo);
 - (d) foraging habitat for *Calyptorhynchus banksii naso* (forest red-tailed black cockatoo); and
 - (e) **Conservation Category Wetlands;**

- (6) ensure **land acquisition, rehabilitation** and/or **on-ground management** offset areas required by condition B5-2(5) contain:
 - (a) no less than three (3) times the extent of wetlands impacted which are of the same quality at the time of acquisition or after rehabilitation as the **Conservation Category Wetlands** impacted;
 - (b) the equivalent extent of **Yanga Vegetation Complex** as impacted; and
 - (c) the same vegetation communities and/or vegetation complexes as the Bush Forever areas being impacted; and
- (7) ensure lands proposed for acquisition, **on-ground management** and/or **rehabilitation** in accordance with conditions B5-2(4) and B5-2(5) contain sufficient areas in total to counterbalance the significant residual impacts to:
 - (a) Bush Forever areas;
 - (b) foraging habitat for *Zanda latirostris* (Carnaby's cockatoo); and
 - (c) foraging habitat for *Calyptrorhynchus banksii naso* (forest red-tailed black cockatoo).

Caladenia huegelii Habitat Management Plan (Environmental Management Plan)

B5-3 The proponent must implement the **Caladenia huegelii Habitat Management Plan** (Environmental Management Plan) with the purpose of demonstrating how achievement of the environmental outcomes in condition B5-2(1) and condition B5-2(2) will be monitored and substantiated.

SCP 20a Offsets Strategy (Environmental Management Plan)

B5-4 The proponent must implement the **SCP 20a Offsets Strategy** (Environmental Management Plan) with the purpose of demonstrating how achievement of the environmental outcomes in condition B5-2(1) and condition B5-2(3) will be monitored and substantiated.

Ioppolo Road Site Land Acquisition and Management Plan (Environmental Management Plan)

B5-5 The proponent must implement the **Ioppolo Road Site Land Acquisition and Management Plan** (Environmental Management Plan) with the purpose of demonstrating how achievement of the environmental outcomes in condition B5-2(1), condition B5-2(4) and condition B5-2(7) will be monitored and substantiated.

Land Acquisition and Rehabilitation Offsets Strategy (Environmental Management Plan)

B5-6 The proponent must implement the **Land Acquisition and Rehabilitation Offsets Strategy** (Environmental Management Plan) with the purpose of demonstrating how achievement of the environmental outcomes in condition B5-2(1), condition B5-2(5), condition B5-2(6) and condition B5-2(7) will be monitored and substantiated.

PART C – ENVIRONMENTAL MANAGEMENT PLANS AND MONITORING

C1 Environmental Management Plans: Conditions Relating to Approval, Implementation, Review and Publication

C1-1 Upon being required to implement an environmental management plan under Part B, the proponent must:

- (1) implement the most recent version of the **confirmed** environmental management plan; and
- (2) continue to implement the **confirmed** environmental management plan referred to in condition C1-1(1), other than for any period which the **CEO** confirms by notice in writing that it has been demonstrated that the relevant requirements for the environmental management plan have been met, or are able to be met under another statutory decision-making process, in which case the implementation of the environmental management plan is no longer required for that period.

C1-2 The proponent:

- (1) may review and revise a **confirmed** environmental management plan provided it meets the relevant requirements of that environmental management plan, including any consultation that may be required when preparing the environmental management plan;
- (2) must review and revise a **confirmed** environmental management plan and ensure it meets the relevant requirements of that environmental management plan, including any consultation that may be required when preparing the environmental management plan, as and when directed by the **CEO**; and
- (3) must revise and submit to the **CEO** the **confirmed** Environmental Management Plan if there is a material risk that the outcomes or objectives it is required to achieve will not be complied with, including but not limited to as a result of a change to the proposal.

C1-3 Despite condition C1-1, but subject to conditions C1-4 and C1-5, the proponent may implement minor revisions to an environmental management plan if the revisions will not result in new or increased **adverse impacts** to the environment or result in a risk to the achievement of the limits, outcomes or objectives which the environmental management plan is required to achieve.

C1-4 If the proponent is to implement minor revisions to an environmental management plan under condition C1-3, the proponent must provide the **CEO** with the following at least twenty (20) business days before it implements the revisions:

- (1) the revised environmental management plan clearly showing the minor revisions;
- (2) an explanation of and justification for the minor revisions; and
- (3) an explanation of why the minor revisions will not result in new or increased **adverse impacts** to the environment or result in a risk to the achievement of the limits, outcomes or objectives which the environmental management plan is required to achieve.

C1-5 The proponent must cease to implement any revisions which the **CEO** notifies the proponent (at any time) in writing may not be implemented.

C1-6 **Confirmed** environmental management plans, and any revised environmental management plans under condition C1-4(1), must be published on the proponent's website and provided to the **CEO** in electronic form suitable for on-line publication by the Department of Water and Environmental Regulation within twenty (20) business days of being implemented, or being required to be implemented (whichever is earlier).

C2 Conditions Related to Monitoring

C2-1 The proponent must undertake monitoring capable of:

- (1) substantiating whether the proposal limitations and extents in Part A are exceeded; and
- (2) **detecting** and substantiating whether the environmental outcomes identified in Part B are achieved (excluding any environmental outcomes in Part B where an environmental management plan is expressly required to monitor achievement of that outcome).

C2-2 The proponent must submit as part of the Compliance Assessment Report required by condition D2 and to the other decision-making authority, a compliance monitoring report that:

- (1) outlines the monitoring that was undertaken during the implementation of the proposal;
- (2) identifies why the monitoring was capable of substantiating whether the proposal limitation and extents in Part A are exceeded;
- (3) for any environmental outcomes to which condition C1-1(2) applies, identifies why the monitoring was scientifically robust and capable of **detecting** whether the environmental outcomes in Part B are met;
- (4) outlines the results of the monitoring;

- (5) reports whether the proposal limitations and extents in Part A were exceeded and (for any environmental outcomes to which condition C2-1(2) applies) whether the environmental outcomes in Part B were achieved, based on analysis of the results of the monitoring; and
- (6) reports any actions taken by the proponent to remediate any potential non-compliance.

C3 Environmental Management Plans: Conditions Related to Management Actions and Targets for Outcome Based Conditions

C3-1 The environmental management plans required under condition B5-3, condition B5-4, condition B5-5 and condition B5-6 must contain provisions which enable the achievement of the relevant outcomes of the conditions, and must include:

- (1) spatial identification of the areas within which the offset measures will be implemented;
- (2) demonstration of application of the principles of the WA Environmental Offsets Policy, the *WA Environmental Offsets Metric and the WA Offsets Template*, as described in the *WA Environmental Offsets Guidelines*, and the *Environment Protection and Biodiversity Conservation Act 1999 Environmental Offsets Policy Assessment Guide*, or any subsequent revisions of these documents;
- (3) for the **land acquisition** offset measures:
 - (a) demonstrate that the **Proposed Offset Conservation Areas** contain the environmental values required to counterbalance the significant residual impacts to the environmental values relevant to the environmental management plan;
 - (b) identify how the **Proposed Offset Conservation Areas** will be protected, being either the sites are ceded to the Crown for the purpose of management for conservation, or the sites are managed under a Conservation Covenant in perpetuity;
 - (c) specify the quantum of works associated with establishing the **Proposed Offset Conservation Areas**, including a contribution of funds for the management of the areas for no less than seven years; and
 - (d) identify the **relevant management body** for the **Proposed Offset Conservation Areas**;
- (4) for **on-ground management** offset measures:

- (a) state the objectives and targets for each environmental value to be achieved by the **on-ground management**, including completion criteria;
 - (b) demonstrate the consistency of the objectives and targets required by condition C3-1(4)(a) with the environmental outcomes in condition B5-2, and the objectives of any relevant guidance, including but not limited to, recovery plans or area management plans;
 - (c) detail the **on-ground management** actions, and associated timeframes for the implementation and completion; and
 - (d) state the funding arrangements and timing for **on-ground management** actions;
- (5) for **rehabilitation** offset measures:
- (a) detail the completion criteria, and the associated timeframes for the implementation and completion of the **rehabilitation** actions; and
 - (b) detail the funding arrangements for the implementation of the **rehabilitation** actions;
- (6) for all offset measures:
- (a) detail the monitoring, reporting and evaluation mechanisms for the targets and actions identified under condition C3-1(3), condition C3-1(4) and condition C3-1(5); and
 - (b) define the role of the proponent and/or any third parties.
- C3-2 Without limiting condition C2-1, the failure to achieve an environmental outcome represents a non-compliance with these conditions.

PART D – COMPLIANCE, TIME LIMITS, AUDITS AND OTHER CONDITIONS

D1 Non-compliance Reporting

D1-1 If the proponent becomes aware of a potential non-compliance, the proponent must:

- (1) report this to the **CEO** within seven (7) days;
- (2) implement **contingency measures**;
- (3) investigate the cause;
- (4) investigate environmental impacts;
- (5) advise rectification measures to be implemented;
- (6) advise any other measures to be implemented to ensure no further impact;
- (7) advise timeframe in which contingency, rectification and other measures have and/or will be implemented; and
- (8) provide a report to the **CEO** within twenty-one (21) days of being aware of the potential non-compliance, detailing the measures required in conditions D1-1(1) to D1-1(7) above.

D1-2 Failure to comply with the requirements of a condition, or with the content of an environmental management plan required under a condition, constitutes a non-compliance with these conditions, regardless of whether the **contingency measures**, rectification or other measures in condition D1-1 above have been or are being implemented.

D2 Compliance Reporting

D2-1 The proponent must provide an annual Compliance Assessment Report to the **CEO** for the purpose of determining whether the implementation conditions are being complied with.

D2-2 Unless a different date or frequency is approved by the **CEO**, the first annual Compliance Assessment Report must be submitted within fifteen (15) months of the date of this Statement, and subsequent reports must be submitted annually from that date.

D2-3 Each annual Compliance Assessment Report must be endorsed by the proponent's Chief Executive Officer, or a person approved by proponent's Chief Executive Officer to be delegated to sign on the Chief Executive Officer's behalf.

D2-4 Each annual Compliance Assessment Report must:

- (1) state whether each condition of this Statement has been complied with, including:
 - (a) exceedance of any proposal limits and extents;
 - (b) achievement of environmental outcomes;
 - (c) achievement of environmental objectives;
 - (d) requirements to implement the content of environmental management plans;
 - (e) monitoring requirements;
 - (f) implement **contingency measures**;
 - (g) requirements to implement adaptive management; and
 - (h) reporting requirements;
- (2) include the results of any monitoring (inclusive of any raw data) that has been required under Part C in order to demonstrate that the limits in Part A, and any outcomes or any objectives are being met;
- (3) provide evidence to substantiate statements of compliance, or details of where there has been a non-compliance;
- (4) include the corrective, remedial and preventative actions taken in response to any potential non-compliance;
- (5) be provided in a form suitable for publication on the proponent's website and online by the Department of Water and Environmental Regulation; and
- (6) be prepared and published consistent with the latest version of the Compliance Assessment Plan required by condition D2-5 which the **CEO** has confirmed by notice in writing satisfies the relevant requirements of Part C and Part D.

D2-5 The proponent must prepare a Compliance Assessment Plan which is submitted to the **CEO** at least six (6) months prior to the first Compliance Assessment Report required by condition D2-2, or prior to implementation of the proposal, whichever is sooner.

D2-6 The Compliance Assessment Plan must include:

- (1) what, when and how information will be collected and recorded to assess compliance;
- (2) the methods which will be used to assess compliance;

- (3) the methods which will be used to validate the adequacy of the compliance assessment to determine whether the implementation conditions are being complied with;
- (4) the retention of compliance assessments;
- (5) the table of contents of Compliance Assessment Reports, including audit tables; and
- (6) how and when Compliance Assessment Reports will be made publicly available, including usually being published on the proponent's website within sixty (60) days of being provided to the **CEO**.

D3 Contact Details

- D3-1 The proponent must notify the **CEO** of any change of its name, physical address or postal address for the serving of notices or other correspondence within twenty-eight (28) days of such change. Where the proponent is a corporation or an association of persons, whether incorporated or not, the postal address is that of the principal place of business or of the principal office in the State.

D4 Public Availability of Data

- D4-1 Subject to condition D5-2, within a reasonable time period approved by the **CEO** upon the issue of this Statement and for the remainder of the life of the proposal, the proponent must make publicly available, in a manner approved by the **CEO**, all validated environmental data collected before and after the date of this Statement relevant to the proposal (including sampling design, sampling methodologies, monitoring and other empirical data and derived information products (e.g. maps)), environmental management plans and reports relevant to the assessment of this proposal and implementation of this Statement.

- D4-2 If:

- (1) any data referred to in condition D4-1 contains trade secrets; or
- (2) any data referred to in condition D4-1 contains particulars of confidential information (other than trade secrets) that has commercial value to a person that would be, or could reasonably be expected to be, destroyed or diminished if the confidential information were published,

the proponent may submit a request for approval from the **CEO** to not make this data publicly available and the **CEO** may agree to such a request if the **CEO** is satisfied that the data meets the above criteria.

- D4-3 In making such a request the proponent must provide the **CEO** with an explanation and reasons why the data should not be made publicly available.

D5 Independent Audit

- D5-1 The proponent must arrange for an independent audit of compliance with the conditions of this statement, including achievement of the environmental outcomes and/or the environmental objectives and/ or environmental performance with the conditions of this statement, as and when directed by the **CEO**.
- D5-2 The independent audit must be carried out by a person with appropriate qualifications who is nominated or approved by the **CEO** to undertake the audit under condition D6-1.
- D5-3 The proponent must submit the independent audit report with the Compliance Assessment Report required by condition D2, or at any time as and when directed in writing by the **CEO**. The audit report is to be supported by credible evidence to substantiate its findings.
- D5-4 The independent audit report required by condition D6-1 is to be made publicly available in the same timeframe, manner and form as a Compliance Assessment Report, or as otherwise directed by the **CEO**.

[signed on 28 August 2025]

Darren Walsh

CHAIR

Delegate of the Environmental Protection Authority

For the Minister for Environment under Notice of Delegation under section 18 of the Environmental Protection Act 1986

Table 1: Abbreviations and definitions

Acronym or abbreviation	Definition or term
Adverse impact / adversely impacted	Negative change that is neither trivial nor negligible that could result in a reduction in health, diversity or abundance of the receptor/s being impacted, or a reduction in environmental value. Adverse impacts can arise from direct or indirect impacts, or other impacts from the proposal.
Black cockatoo/s	Carnaby's cockatoo (<i>Zanda latirostris</i>), forest red-tailed black cockatoo (<i>Calyptorhynchus banksii naso</i>), and Baudin's cockatoo (<i>Zanda baudinii</i>).
<i>Caladenia huegelii</i> Habitat Management Plan	The approved <i>Caladenia huegelii</i> Habitat Management Plan (Revision 5, December 2019).
CEO	The Chief Executive Officer of the Department of the Public Service of the State responsible for the administration of section 48 of the <i>Environmental Protection Act 1986</i> , or the CEO's delegate.
Condition Environmental Management Plan - Flora and Vegetation - Progressive Rehabilitation	The approved Condition Environmental Management Plan - Flora and Vegetation - Progressive Rehabilitation (Revision 4, August 2018).
Confirmed	In relation to a plan required to be made and submitted to the CEO , means, at the relevant time, the plan that the CEO confirmed, by notice in writing, meets the requirements of the relevant condition. In relation to a plan required to be implemented without the need to be first submitted to the CEO , means that plan until it is revised, and then means, at the relevant time, the plan that the CEO confirmed, by notice in writing, meets the requirements of the relevant condition.
Conservation Category Wetland	Wetlands classified as conservation management category wetlands in the Geomorphic Wetlands, Swan Coastal Plain dataset maintained by the DBCA.
Construction activities	Activities that are associated with the substantial implementation of a proposal including but not limited to, earthmoving, vegetation clearing, grading or construction of right of way. Construction activities do not include geotechnical investigations (including potholing for services and the installation of piezometers) and other preconstruction activities where no clearing of vegetation is required.
Contingency measures	Planned actions for implementation if it is identified that an environmental outcome, environmental objective, threshold

	criteria, or management target are likely to be, or are being, exceeded. Contingency measures include changes to operations or reductions in disturbance or adverse impacts to reduce impacts and must be decisive actions that will quickly bring the impact to below any relevant threshold, management target and to ensure that the environmental outcome and/or objective can be met.
Detecting/ Detectable	The smallest statistically discernible effect size that can be achieved with a monitoring strategy designed to achieve a statistical power value of at least 0.8 or an alternative value as determined by the CEO .
Disturb/ disturbed	Means directly has or materially contributes to the disturbance effect on health, diversity or abundance of the receptor/s being impacted or on an environmental value. In relation to flora, vegetation or fauna habitat, includes to result in the death, destruction, removal, severing or doing substantial damage to the detriment of the flora, vegetation or fauna habitat. In relation to fauna, includes to have the effect of altering the natural behaviour of fauna to its detriment. In relation to wetlands, includes to result in a change of hydrological processes to the detriment of wetlands.
Environmental weeds	Any plant declared under section 22(2) of the <i>Biosecurity and Agriculture Management Act 2007</i> , any plant listed on the Weeds of National Significance List and any weeds listed on the Department of Biodiversity, Conservation and Attractions' Swan Region Impact and Invasiveness Ratings list, as amended, or replaced from time to time.
Fauna crossing/s	Infrastructure designed to reduce fauna vehicle strike, habitat fragmentation and facilitate fauna movement.
Fauna handler/s	A person who holds a current and suitable licence under the <i>Biodiversity Conservation Act 2016</i> .
Ground-dwelling fauna	Terrestrial vertebrate fauna species that undertake biological behaviours at natural ground level for extended periods of time.
GUWPCA	Gnangara Underground Water Pollution Control Area as delineated in the <i>Metropolitan Water Supply, Sewage and Drainage By-laws 1981</i> or its revisions.
Ha	Hectares
L	Litre
Ippolo Road Site Land Acquisition and Management Plan	The approved Ippolo Road Site Land Acquisition and Management Plan (Revision 2, January 2017)
Land acquisition	The protection of environmental values on an area of initially unprotected land for the purpose of conservation through improved security of tenure or restricting the use of land (e.g. ceding land to the Crown or perpetual conservation covenants).

	This includes upfront costs of establishing the offset site and the on-going management costs of maintaining the offset site.
Land Acquisition and Rehabilitation Offsets Strategy	The approved Land Acquisition and Rehabilitation Offsets Strategy (Revision 3, December 2018).
m	Metre
Nesting tree/s	Any existing tree with a hollow exhibiting evidence of use for nesting by black cockatoos .
On-ground management	This may include revegetation (re-establishment of native vegetation in degraded areas) and rehabilitation (in the context of repair of ecosystem processes including actions such as, but not limited to, management of weeds, disease, or feral animals) with the objective of achieving a tangible improvement to the environmental values in the offset area.
Potential nesting tree/s	Trees of a species known to support black cockatoo that have a suitable diameter at breast height (DBH) to develop a nest hollow, but do not currently have suitable hollows. Trees suitable to develop a nest hollow in the future are 500 mm DBH or greater, or for <i>Eucalyptus wandoo</i> 300 mm or greater.
Pre-construction vegetation density	The number of individual plants of a defined group that are present in a given area prior to construction activities (for example, stems per ha).
Proposed Offset Conservation Areas	The areas of land identified at condition C3-1(1), within which offset measures will be implemented.
Relevant management body	A party or parties that has a role in the establishment and/or on-going management of the Proposed Offset Conservation Areas . Note: This includes the role of the proponent.
Rehabilitate/ Rehabilitation	To maximise the return of biodiversity by reinstating self-sustaining and functional ecosystems based on local species.
Revegetate/ Revegetation	Re-establishment of native vegetation/habitat in degraded areas.
SCP 20a Offsets Strategy	The approved SCP 20a Offsets Strategy (Revision 4, May 2019).
SCP 20a TEC	Swan Coastal Plain Floristic Community Type 20a ' <i>Banksia attenuata</i> woodlands over species rich dense shrublands' Threatened Ecological Community, listed as Critically Endangered under the <i>Biodiversity Conservation Act 2016</i> .
Suitable hollows	Any hollow with dimensions suitable for use for breeding by black cockatoos . Characteristics of hollows used by each species is available in the SPRAT database: https://www.environment.gov.au/cgi-bin/sprat/public/sprat.pl
Tangible improvement	A perceptible, measurable and definable improvement that provides additional ecological benefit and/or value.

Trench/trenches	Any excavation that is of sufficient depth that would cause vertebrate fauna to be become trapped and unable to escape and would include, but not be limited to, trenches or pits for utilities, pipelines, dewatering pits or bell holes.
Whiteman Park 2/ Whiteman Park 3	As specified in Figure 3A of the approved Condition Environmental Management Plan – Fauna – Construction (Revision 4, January 2019).
Yanga vegetation complex	Occurrences of the Yanga vegetation complex occurring outside the Swan Coastal Plain portion of the Perth Metropolitan Region (outside the Bush Forever Study Area).

Figures (attached)

Figure 1 Perth-Darwin National Highway Development Envelope (This figure is a representation of the co-ordinates referenced in Schedule 1)

Figure 2 Remaining extent of Floristic Community Type SCP 20a outside the development envelope

Figure 3 *Grevillea curviloba subsp. incurva* and *Darwinia foetida* 10 m buffer

Figure 4 *Caladenia huegelii* 50 m buffer

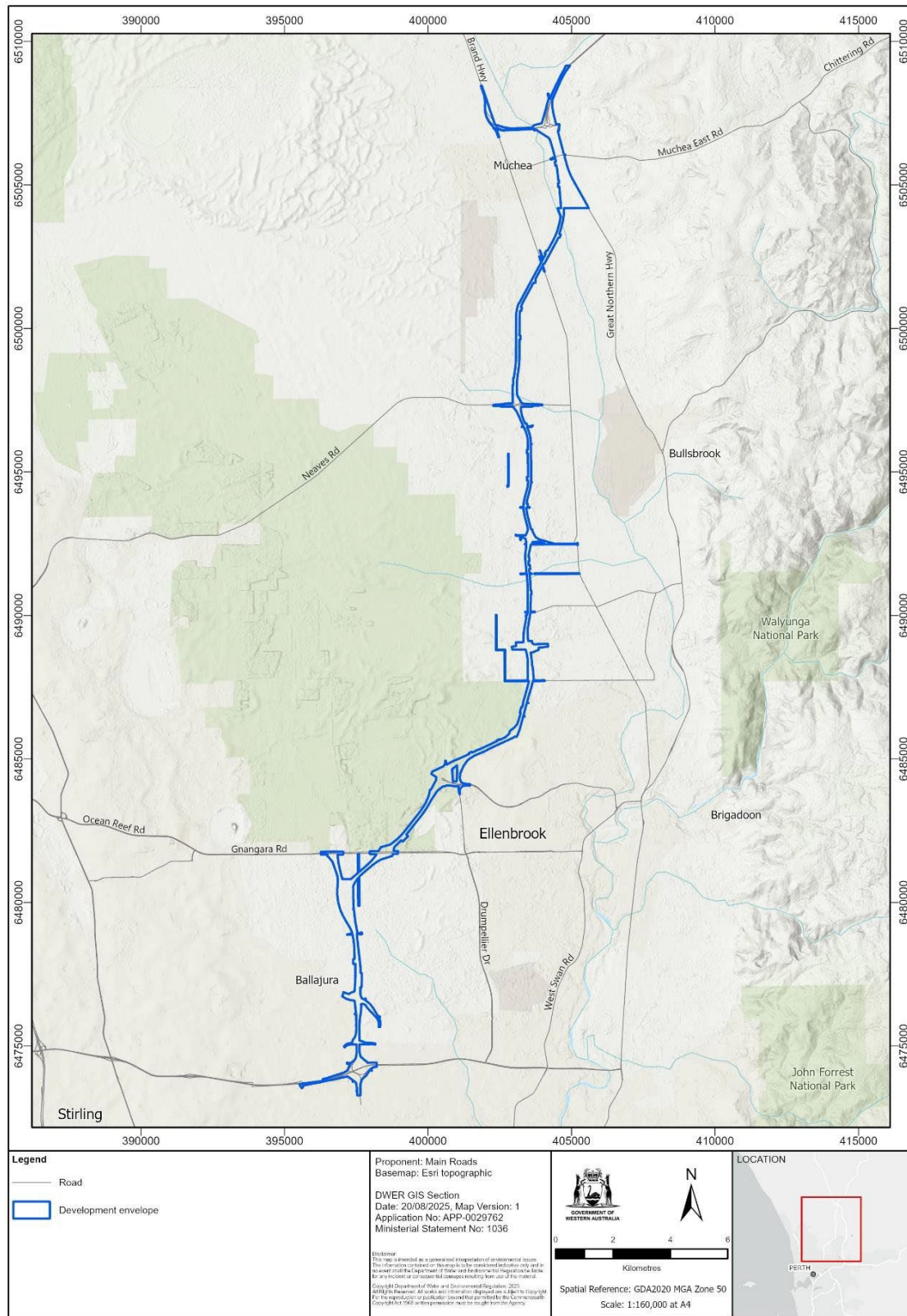


Figure 1. Perth-Darwin National Highway development envelope

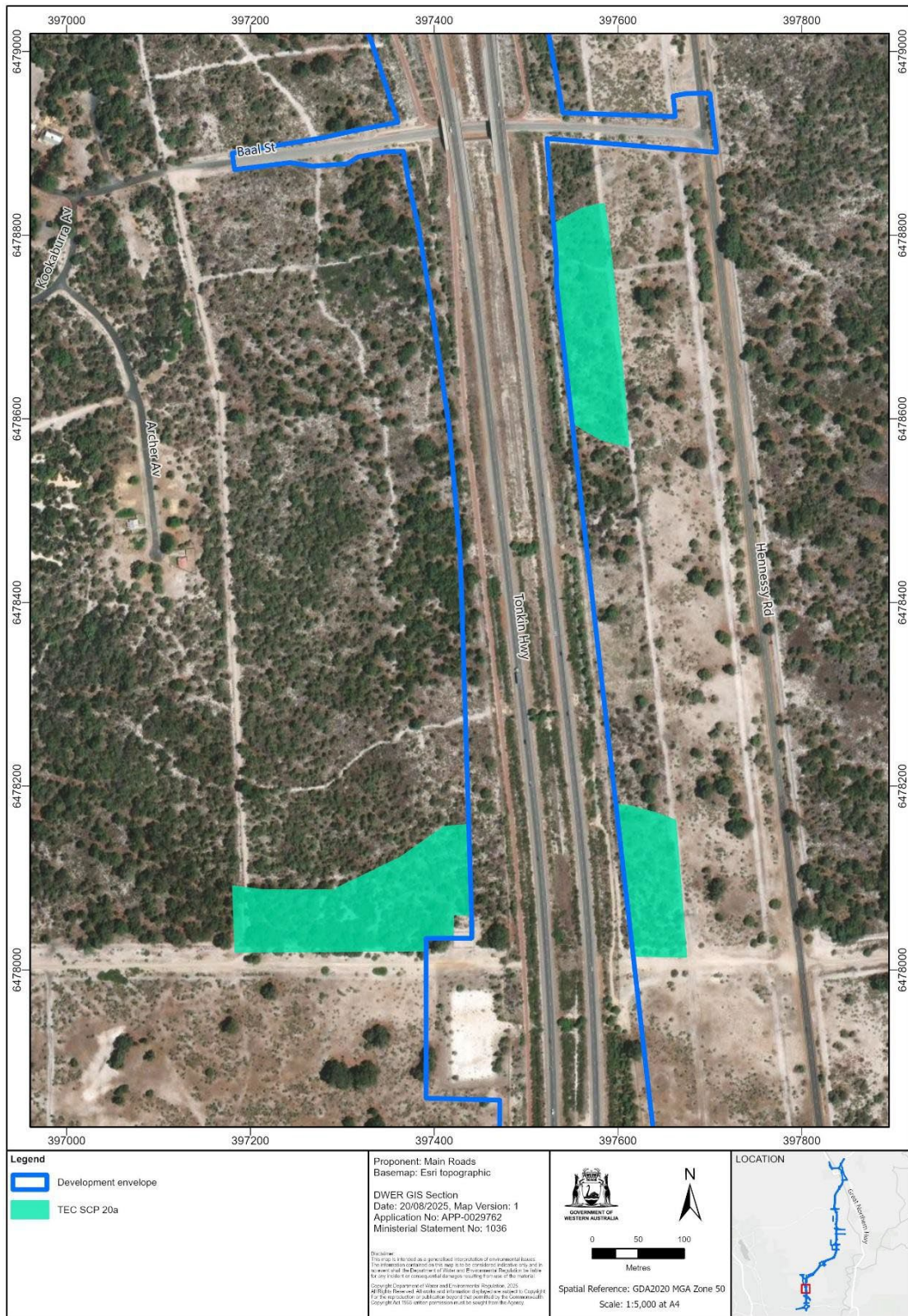


Figure 2. Remaining extent of Floristic Community Type SCP 20a outside the development envelope

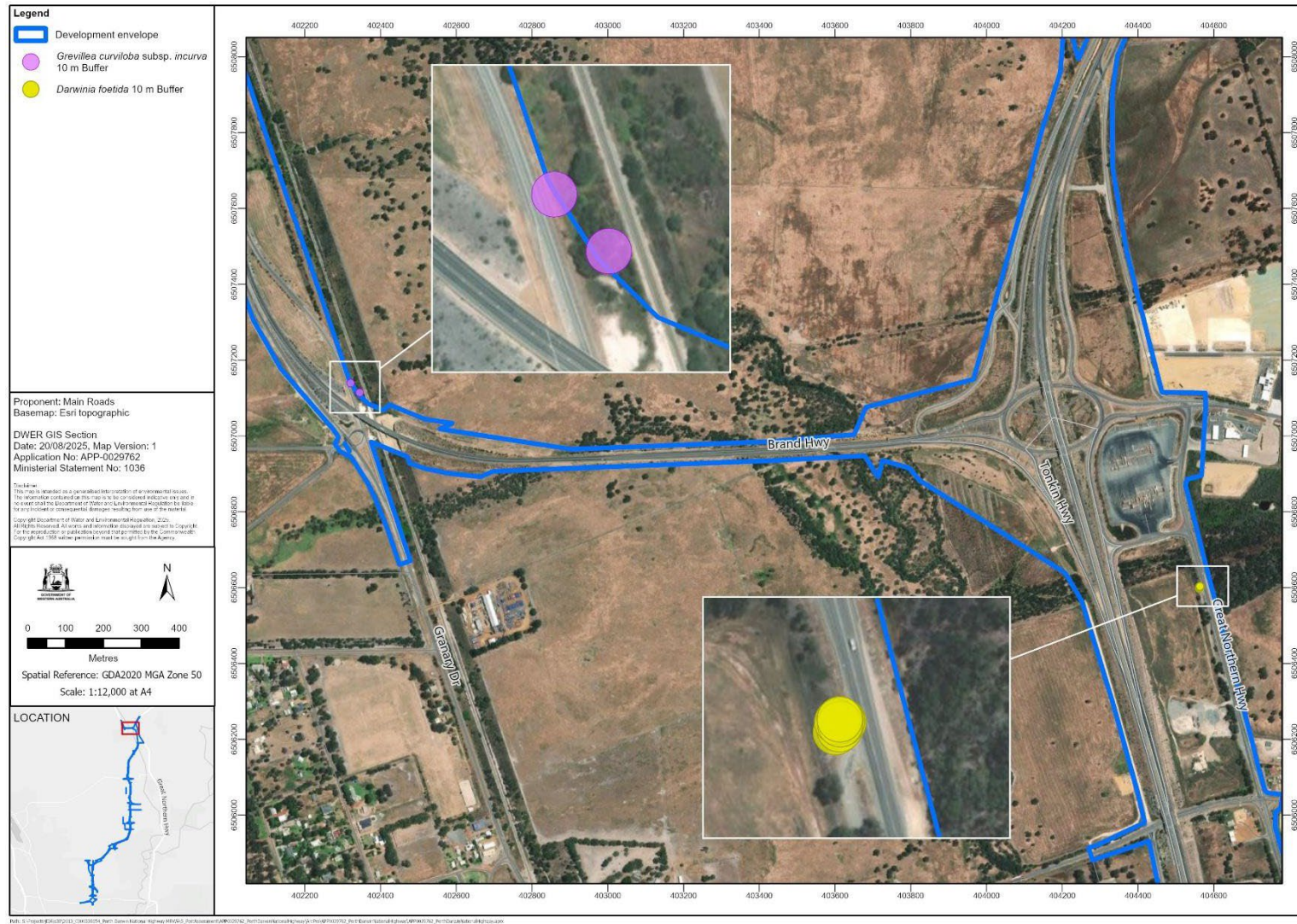


Figure 3. *Grevillea curviloba* subsp. *incurva* and *Darwinia foetida* 10 m buffer



Figure 4. *Caladenia huegelii* 50 m buffer

Schedule 1

All co-ordinates are in metres, listed in Map Grid of Australia Zone 50 (MGA Zone 50), datum of Geocentric Datum of Australia 2020 (GDA2020).

Coordinates and spatial data depicting the figures are held by the Department of Water and Environmental Regulation. Record No. APP-0029762.