

THIS DOCUMENT

This document has been produced by the Office of the Appeals Convenor as an electronic version of the original Statement for the proposal listed below as signed by the Minister and held by this Office. Whilst every effort is made to ensure its accuracy, no warranty is given as to the accuracy or completeness of this document.

The State of Western Australia and its agents and employees disclaim liability, whether in negligence or otherwise, for any loss or damage resulting from reliance on the accuracy or completeness of this document.

Copyright in this document is reserved to the Crown in right of the State of Western Australia.

Reproduction except in accordance with copyright law is prohibited.

Published on: 8 December 2025

Statement No. 1262

STATEMENT THAT A PROPOSAL MAY BE IMPLEMENTED
(Environmental Protection Act 1986)

JIMBLEBAR HUB SIGNIFICANT AMENDMENT

Proposal: For the expansion and amalgamation of existing BHP Iron Ore Pty Ltd iron ore mining operations (Ministerial Statement 1126, 439/1012 and 1021).

Proponent: BHP Iron Ore Pty Ltd
Australian Company Number 008 700 981

Proponent address: 125 St Georges Terrace
PERTH WA 6000

Assessment number: 2397

Report of the Environmental Protection Authority: 1793

Introduction: The proposal is a significant amendment to the following existing proposals:

- Jimblebar Optimisation Project under Ministerial Statement (MS) 1126 (Report 1663, EPA Assessment Number 2223)
- Orebody 18 Iron Ore Mine under MS 439 (Report 840, EPA Assessment Number 978) and MS 1012 (Report 1550, EPA Assessment Number 2051)
- Orebody 31 Iron Ore Mine under MS 1021 (Report 1559, EPA Assessment Number 2047).

Pursuant to section 45 of the *Environmental Protection Act 1986*, it is now agreed that:

1. The significant amendment proposal described and documented in the proponent's Proposal Content Document (January 2025), may be implemented;
2. Ministerial Statement 1126, 439, 1012 and 1021 for the above existing proposals are superseded under section 40AA (6) (b) of the *Environmental Protection Act 1986*; and

3. the implementation of the significant amended proposal (being the existing approved proposal as amended by the significant amendment proposal as shown in Figure 1) is subject to the following implementation conditions and procedures.

Conditions and procedures

Part A: Proposal extent

Part B: Environmental outcomes, prescriptions and objectives

Part C: Environmental management plans and monitoring

Part D: Compliance and other conditions

PART A: PROPOSAL EXTENT

A1 Limitations and Extent of Proposal

A1-1 The proponent must ensure that the **proposal** is implemented in such a manner that the following limitations or maximum extents / capacities / ranges are not exceeded:

Proposal element	Location	Maximum extent
Physical elements		
Development envelope	Figure 1	Development envelope of 24,684 ha.
Direct disturbance of native vegetation	Figure 1	<p>Clearing of no more than 12,262 ha of native vegetation within the development envelope of 24,684 ha.</p> <p>Clearing of no more than 6,521 ha of 'Good' to 'Excellent' condition native vegetation.</p> <p>Disturbance limit of 52.6 ha of riparian vegetation.</p> <p>Disturbance limit of 2.5 ha of breakaway/cliff habitat for the significant amendment.</p> <p>Disturbance limit of 7.6 ha of gorge/gully habitat for the significant amendment.</p>
Operational elements		
Groundwater abstraction - mine pit dewatering and water supply	-	Groundwater abstraction of up to 69.2 GL/a .
Surplus water management – discharge to Ophthalmia Dam MAR system	Figure 1	Discharge of up to 32.625 GL/a surplus water to the Ophthalmia Dam system.
Aquifer injection	Figure 1	<p>Caramulla MAR</p> <p>Groundwater injection of up to 10.95 GL/a surplus water in the Caramulla MAR area. Ground water level to be no higher than 25 m below ground level.</p> <p>Orebody 18 (Ninga) MAR</p>

		Groundwater injection of up to 13.14 GL/a surplus water in the Orebody 18 (Ninga) MAR area. Ground water level to be no higher than 10 m below ground level.
Surface water discharge to watercourses	Figure 1	<p>Caramulla Creek Controlled discharge of up to 27.375 GL/a surplus water from the Caramulla Creek discharge point. Surplus water must not extend further than 34 km along Caramulla Creek from the Caramulla discharge point, during natural, no-flow conditions.</p> <p>Jimblebar Creek Controlled discharge of up to 4 GL surplus water for a maximum three months per year for contingency purposes and must not extend further than 16 km along Jimblebar Creek from the Orebody 31 discharge point, during natural no-flow conditions.</p> <p>Controlled discharge of up to 2.19 GL/a surplus water must not extend further along Jimblebar Creek than 200 m from the upstream extent of Innawally Pool, during natural no-flow conditions.</p>
Proposal element	Location	Limitation or maximum extent
Tailings storage – in-pit tailings storage facilities	-	Option to dispose of tailings at mine pit voids at Orebody 17/18, Orebody 31 and Jimblebar.
Mine pit voids and pit lakes	-	Option for open voids and formation of pit lake/s.
Timing elements		
Project life	-	Approximately 46 years (construction , operation, decommissioning and closure (to rehabilitation execution)) from the date of issue of this Statement.

PART B – ENVIRONMENTAL OUTCOMES, PRESCRIPTIONS AND OBJECTIVES

B1 Flora and Vegetation

B1-1 The proponent must ensure the implementation of the **proposal** achieves the following environmental **outcome** for the **proposal**:

- (1) **disturb** no more than 6,521 ha of 'Good' to 'Excellent' condition **native vegetation**;
- (2) **disturb** no more than 52.6 ha of **riparian vegetation**;
- (3) disturb no more than 5,360 individuals of *Eremophila capricornica* (P1);
- (4) no **adverse impacts** to *Eremophila capricornica* (P1) populations as shown in Figure 8-7 of the Jimblebar Hub Iron Ore Mining Operations Significant Amendment Environmental Review Document – referral supplementary report (BHP 2025);
- (5) no **disturbance** to *Acacia corusca* (P1) within the **Mining Exclusion Zones** as shown in Figures 4a and 4b;
- (6) no **adverse impacts** to *Acacia corusca* populations; and
- (7) maintain the **viability** of *Acacia corusca* at the population level.

B1-2 The proponent must ensure the implementation of the **proposal** achieves the following environmental **outcomes** for the **significant amendment**:

- (1) no **disturbance**, including mining activities, pits, excavations, waste dumps and permanent structures, within the **Mining Exclusion Zone** as shown Figure 4a.

B1-3 Prior to **clearing** each area to be disturbed within the **conceptual footprint** of the **significant amendment**, the proponent must undertake **pre-clearance survey(s)** of unsurveyed areas shown in Figure 5, in accordance with *Technical Guidance – Flora and Vegetation Surveys for Environmental Impact Assessment* (EPA 2016) (or any approved updates of these guidelines). **Pre-clearance surveys** shall target the following species:

- (1) *Acacia corusca* (P1); and
- (2) *Eremophila capricornica* (P1).

B1-4 The proponent shall implement appropriate management measures to achieve the following environmental **objectives** for the **significant amendment**:

- (1) minimise **disturbances** to flora and vegetation including but not limited to impacts from, altered groundwater and surface water regimes, bushfire, dust, and environmental weeds; and

- (2) minimise **disturbances** on remaining extents of significant vegetation and **priority flora**.
- B1-5 The proponent must ensure the implementation of the **proposal** achieves the following environmental **objective** for the **proposal**:
- (1) minimise direct and indirect impacts on flora taxa listed as **priority flora**.
- B1-6 The proponent must review and update the Jimblebar Hub Flora and Vegetation Management Plan – FINAL (December 2023, Version 1) that satisfies the requirements of condition C4 and C5 and demonstrates how achievement of the environmental **outcomes** and **objectives** in conditions B1-1(4), B1-1(6), B1-1(7) and B1-5 will be monitored and substantiated, and submit it to the **CEO**.
- B1-7 The proponent shall, within twelve (12) months of the date of this Statement, or otherwise agreed to by the **CEO**, prepare and submit an *Acacia corusca* Conservation and Research Plan to the satisfaction of the **CEO**, on advice from **DBCA**.
- B1-8 The *Acacia corusca* Conservation and Research Plan identified in condition B1-7 shall include:
- (1) results of targeted flora surveys or where surveys have not been completed, to provide further information on the conservation and baseline conservation status of *Acacia corusca* within the region;
 - (2) details of suitable conservation measures such as seed collection and germplasm storage, seeding or translocation trials to be undertaken to determine the likelihood of successful establishment, during mine site **rehabilitation** or other suitable measures, for conservation of the species;
 - (3) details on research to be undertaken into the habitat, biology and conservation of the species;
 - (4) timeframes and responsibilities for the implementation of proposed conservation measures; and
 - (5) a monitoring programme and criteria for determining the efficacy of the proposed conservation measures.
- B1-9 The proponent shall submit a report to the **CEO** documenting the results of the *Acacia corusca* Conservation and Research Plan, identifying the success of the conservation measures required by condition B1-8(2) and the findings of the research required by condition B1-8(3) within six (6) months of completion of the measures set out in the approved plan.

B2 Terrestrial Fauna

B2-1 The proponent must ensure the implementation of the **proposal** achieves the following environmental **outcomes**:

- (1) for the **significant amendment, disturb** no more than:
 - (a) 2.5 **ha** of fauna habitat identified as **breakaway/cliff habitat** as shown in Figure 6;
 - (b) 7.6 **ha** of fauna habitat identified as **gorge/gully habitat** as shown in Figure 6; and
 - (c) one (1) ghost bat cave (category 4) as shown in Figure 7.
- (2) no **disturbance** to ghost bat (*Macroderma gigas*) within the **Mining Exclusion Zones** in Figure 8 attributable to the **significant amendment**; and
- (3) no detectable increase in feral cat abundance in the **development envelope** from baseline levels during the life of the **proposal** relative to suitable reference sites.

B2-2 The proponent must undertake targeted feral cat control within the **development envelope**, including at the entrance of ghost bat diurnal roosts, to achieve the outcome in condition B2-1(3); and

B2-3 The proponent must avoid, and where unavoidable, minimise impacts to **critical habitat** attributable to the **significant amendment**, including from dust emissions, spread or introduction of environmental weeds, fire, altered hydrological regimes, habitat fragmentation and contamination.

Clearing for ground disturbance activities

B2-4 Prior to **ground disturbing activities** for the **significant amendment** the proponent shall undertake the following actions:

- (1) within seven (7) days prior to **clearing gorge/gully** and **breakaway/cliff habitat types** or **supporting habitat**, using a **fauna spotter**, undertake **pre-clearance inspection(s)** of the areas to be cleared to **detect** presence of northern quoll (*Dasyurus hallucatus*);
- (2) within seven (7) days prior to **clearing** cave CJIM-04, using a **fauna spotter**, undertake **pre-clearance inspection(s)** to **detect** presence of ghost bat (*Macroderma gigas*);
- (3) within seven (7) days prior to **clearing major drainage line** habitat type, using a **fauna spotter**, undertake **pre-clearance inspection(s)** to **detect** the presence of grey falcon (*Falco hypoleucos*) occupied nests;

- (4) where northern quoll (*Dasyurus hallucatus*), ghost bat (*Macroderma gigas*), and grey falcon (*Falco hypoleucos*) occupied nests are detected, **ground disturbing activities** shall not commence until either:
- (a) the finding has been notified to the **CEO** and **DBCA**; and
 - (b) either:
 - (i) the individual has been relocated by a licensed **fauna handler** to a **critical habitat**; or
 - (ii) grey falcons (*Falco hypoleucos*) are no longer using the nest during the **maternity season**; or
 - (iii) the individual has been observed by the **fauna spotter** to have moved on from the area to adjoining **critical habitat**; and
 - (iv) the **fauna spotter** considers that the individual no longer occurs in the area to be cleared/disturbed.
 - (c) once ghost bats (*Macroderma gigas*) individual(s) are **confirmed** to be completely excluded from the cave CJIM-04, the cave entrance needs to be sealed, or exclusion devices (light and/or noise emitting) shall be installed, to prevent them from returning prior to **ground disturbing activities**.

B2-5 The proponent must submit as part of the Compliance Assessment Report required by condition D2, a report on fauna management undertaken, in line with condition B2-4. The report shall include the following:

- (1) details of fauna inspections;
- (2) dates and details of **clearing activities** for each area inspected;
- (3) the number and type of fauna removed and relocated and actions taken;
- (4) details of the **fauna spotter** and **fauna handler** commissioned;
- (5) results of the **pre-clearance surveys** and **pre-clearance inspections**; and
- (6) vertebrate fauna mortalities.

B2-6 In the event of change in the **conceptual footprint**, and where survey has not been completed, the proponent must undertake surveys for **threatened fauna** within the new unsurveyed **conceptual footprint** and submit findings and mitigation measures to the **CEO** for approval prior to the **ground disturbing activities** within the new unsurveyed **conceptual footprint**.

Haul road/ infrastructure fencing

B2-7 Barbed wire fencing, where it is demonstrated to be required for the **significant amendment**, must be installed with the top strand as a single strand wire and with suitable **bat deflectors**.

Speed limits

B2-8 During **ground disturbing activities** and operational activities, vehicle and machinery speed limits within the **development envelope** must not exceed:

- (1) 60 **km/hr** within 1 **km** of **gorge/gully** and **breakaway/cliff habitat types** during day time hours and on unsealed roads during night-time hours.

B3 Inland Waters and Subterranean Fauna

B3-1 The proponent must implement the **proposal** to achieve the following environmental **outcomes**:

- (1) maintain habitat, groundwater levels and water quality in the Ethel Gorge aquifer to support the stygofauna habitat of the **Ethel Gorge TEC**;
- (2) maintain the current (altered) ephemeral surface water regime to the Fortescue River downstream of Ophthalmia Dam as a result of releases of water from Ophthalmia Dam.

B3-2 The proponent must implement the **proposal** to achieve the following environmental **outcomes**:

- (1) no **adverse impacts** to Innawally Pool;
- (2) groundwater level to rise no more than 25 **mbgl** in the regional aquifer from groundwater injection of surplus water in the Caramulla **MAR** area;
- (3) groundwater level to rise no more than 10 **mbgl** in the regional aquifer from groundwater injection of surplus water in the Orebody 18 (Ninga) **MAR** area;
- (4) surface water flow along Caramulla Creek from controlled discharge of surplus water to extend no further than 34.6 **km** from Caramulla Creek discharge point under natural no-flow conditions;
- (5) surface water flow along Jimblebar Creek to extend no further than 200 **m** from the upstream extent of Innawally Pool under natural no-flow conditions;
- (6) surface water flow along Jimblebar Creek from controlled discharge of surplus water to extend no further than 16 **km** from Orebody 31 Creek discharge point under natural no-flow conditions;

- (7) no **adverse impacts** to the riparian tree species along Caramulla due to the controlled discharge of surplus water into Caramulla Creek; and
- (8) no **adverse impacts** to the riparian tree species along Jimblebar Creek due to the controlled discharge of surplus water into Orebody 31 Creek.

B3-3 The proponent must implement the Eastern Pilbara Water Resource Management Plan, with the purpose of ensuring the environmental **outcomes** in condition B3-1 are achieved, monitored and substantiated.

B3-4 The proponent must implement the Jimblebar Hub Water Management Plan, with the purpose of ensuring the environmental **outcomes** in condition B3-2(1), B3-2(2), B3-2(3), B3-2(4), B3-2(5) and B3-2(6) are achieved, monitored and substantiated.

B3-5 The proponent must implement the Flora and Vegetation Management Plan with the purpose of ensuring the environmental **outcomes** in condition B3-2(7) and B3-2(8) are achieved, monitored and substantiated.

B4 Greenhouse Gas Emissions

B4-1 The proponent must notify the **CEO** in writing within one (1) month of it becoming aware that implementation of the **proposal** will not be or is not expected to be regulated under the **Safeguard Legislation** as a designated large facility (the notifiable event) and such notice must briefly describe the reasons for and expected duration of the notifiable event.

B4-2 The proponent must, if requested in writing by the **CEO**, provide the **CEO** with a report on the implications for the **proposal** of any amendment or proposed amendment to the **Safeguard Legislation**, or a decision or proposed decision made under the **Safeguard Legislation** that is specified in the **CEO's** request.

B4-3 The report required by condition B4-2 must:

- (1) be submitted to the **CEO** within three (3) months of the date of the **CEO's** request or such longer period as the **CEO** agrees to in writing; and
- (2) explain the implication that the specified amendment or decision has had or is expected to have on:
 - (a) the obligation to reduce net Scope 1 **greenhouse gas emissions** from implementation of the **proposal** under the **Safeguard Legislation**; and
 - (b) the quantity of actual net Scope 1 **greenhouse gas emissions** likely to result from the future implementation of the **proposal**.

B5 Aboriginal cultural heritage

B5-1 The proponent must implement the **proposal** to meet the following environmental **outcomes** for the **significant amendment**:

- (1) no disturbance of the **Aboriginal sites** or to **Aboriginal cultural heritage** in the **proposal** disturbance footprint other than where consent is granted for the use of the land under the *Aboriginal Heritage Act 1972*; and
- (2) subject to reasonable health and safety requirements, no interruption of ongoing access to land utilised for traditional use or custom by the **native title party/parties**.

B5-2 The proponent must implement the **proposal** to meet the following environmental **objective**:

- (1) avoid, and where unavoidable, minimise **adverse impacts** to **Aboriginal cultural heritage** within and surrounding the **proposal development envelope**.

B5-3 The proponent must undertake ongoing consultation and engagement with the **native title party/parties** about the achievement of the outcomes and objectives in condition B5-1 and condition B5-2 for the life of the proposal.

B5-4 The proponent must undertake **reasonable steps to consult** with the **native title party/parties** about:

- (1) the design of waste rock landforms, pit voids and lakes as part of the Mine Closure Plan required under condition B7-2.

B6 Rehabilitation

B6-1 The proponent must ensure the implementation of the **proposal** achieves the following environmental **outcomes**:

- (1) flora and vegetation within rehabilitated areas are comparable with ecosystem structure and composition within suitable analogue or reference sites;
- (2) rehabilitated ecosystems are **self-sustaining**;
- (3) rehabilitated landforms are stable, do not cause **pollution** or **environmental harm**;
- (4) rehabilitated drainage lines are stable and support ecological processes with no erosion features present that compromise rehabilitated landform stability;

- (5) the post-mining profile, for ex pit rehabilitated landforms, will be designed in consideration of visually integrating into the surrounding undisturbed landscape, continuing the surrounding contours of the low hills and slopes; and
 - (6) pits will be backfilled above post mining recovered water levels where there is a closure acid and/or metalliferous drainage risk and a demonstratable moderate or high risk of that drainage **disturbing** sensitive environmental or cultural heritage receptors.
- B6-2 The proponent must ensure that the **rehabilitation** of ecosystems to achieve the **outcomes** in condition B6-1 is undertaken in a **progressive manner** during the **rehabilitation** planning phase, during **operations**, and as soon as practicable upon closure, to increase the rates of **rehabilitation** and deliver improved **outcomes**.
- B6-3 The proponent must commence **rehabilitation** for areas cleared for infrastructure, roads or access within eighteen (18) months of that infrastructure, road or access no longer being required.
- B6-4 The proponent must ensure that the process for rehabilitating ecosystems to achieve the **outcomes** in condition B6-1:
- (1) uses seed of **local provenance** which also contains *Acacia corusca* and *Eremophila capricornica*;
 - (2) incorporates relevant and contemporary scientific **outcomes**;
 - (3) incorporates regeneration or revegetation strategies which may be required for *Acacia corusca* and components of communities, including further investigations to determine appropriate regeneration methodologies, if the completion criteria for this species are not being achieved;
 - (4) develops and implements management and/or mitigation actions to address any failure in achieving the completion criteria;
 - (5) includes relevant research, investigations, trials and monitoring programs, targeting key issues in **rehabilitation**, to improve **rehabilitation** techniques, practices and **outcomes**; and
 - (6) ensures **outcomes** from previous research, investigations, trials and monitoring programs have been incorporated into **rehabilitation** techniques and practices.
- B6-5 The proponent must prepare a Rehabilitation Strategy and submit to the **CEO**. The Rehabilitation Strategy must:

- (1) detail the types of ecosystems and total area of **rehabilitation** that the proponent will be required to rehabilitate across the **development envelope** consistent with the **outcomes** in condition B6-1;
- (2) outline the Rehabilitation Strategy for the **proposal** that satisfies the requirements of conditions B6-2, B6-3 and B6-4 and demonstrates how achievement of the **outcomes** in condition B6-1 will be monitored and substantiated; and
- (3) provide the expected timing and hectares of **rehabilitation** over the life of the **proposal** to demonstrate the achievement of condition B6-2.

B6-6 The proponent must prepare a Rehabilitation Performance Report and submit to the **CEO**. The Rehabilitation Performance Report must:

- (1) provide an analysis of the **rehabilitation** processes and **outcomes** that the proponent has undertaken for the **proposal** since the commencement of mining, and those required by condition B6-4, and how these processes have been incorporated into past **rehabilitation**;
- (2) provide historical rates of **rehabilitation** for the **proposal**, an explanation of these rates and an analysis of the demonstrated success of that **rehabilitation** over time against the completion criteria;
- (3) provide evidence-based and effective completion criteria that demonstrate the achievement of the **outcomes** in condition B6-1;
- (4) provide annual reporting, commencing no later than the date of this Statement, on:
 - (a) hectares rehabilitated; and
 - (b) **rehabilitation outcomes** against the completion criteria.
- (5) detail the locations and hectares to be rehabilitated over the next five (5) years;
- (6) discuss the likely success of future **rehabilitation** activities in establishing **self-sustaining** ecosystems in consideration of:
 - (a) relevant contemporary scientific evidence and **outcomes**;
 - (b) **outcomes** of research, investigations, trials and monitoring programs; and
 - (c) the types of ecosystems to be rehabilitated.

- (7) discuss future **rehabilitation** processes to be implemented to ensure the likely success of future **rehabilitation** activities in establishing **self-sustaining** ecosystems.

B7 Mine Closure

B7-1 The proponent must ensure the implementation of the **proposal** achieves the following environmental **outcomes**:

- (1) Mining activities are rehabilitated and closed in a manner to make them physically safe to humans and animals, geotechnically stable, geochemically non-polluting/non-contaminating, and capable of sustaining an agreed post-mining land use, with consideration for cultural values.

B7-2 The proponent must review and update the Mine Closure Plan in accordance with the Department of Mines, Petroleum and Exploration's Guideline for Mine Closure Plans March 2025 (or any subsequent revisions of the guidelines) and submit to the **CEO**.

B8 Pilbara Environmental Offsets Fund

B8-1 The proponent must contribute funds to the **Pilbara Environmental Offsets Fund** calculated pursuant to condition 8-8(2), to achieve the **objective** of counterbalancing the significant residual impacts to the following environmental values:

- (1) **'Good' to 'Excellent' condition native vegetation;**
- (2) **Riparian vegetation;**
- (3) **Critical habitat** for northern quoll (*Dasyurus hallucatus*) subject to any reduction approved by the **CEO** under condition B8-9; and
- (4) **Supporting habitat** for greater bilby (*Macrotis lagotis*), northern quoll (*Dasyurus hallucatus*), ghost bat (*Macroderma gigas*) and Pilbara olive python (*Liasis olivaceus barroni*), subject to any reduction approved by the **CEO** under condition B8-9.

B8-2 The proponent's contribution to the **Pilbara Environmental Offsets Fund** must be paid biennially, with the amount to be contributed calculated based on the **clearing** undertaken in each year of the biennial reporting period in accordance with the rates in condition B8-3. The first biennial reporting period must commence from **ground disturbing activities** of the **environmental value(s)** identified in condition B8-3.

B8-3 Calculated on the 2023-2024 financial year, the contribution rates are:

- (1) \$986 (excluding GST) per hectare of **'Good' to 'Excellent' condition native vegetation** cleared as a result of the **proposal** within the Hamersley **IBRA** subregion;
- (2) \$1,972 AUD (excluding GST) per hectare of **riparian vegetation** and important vegetation types, including potentially restricted vegetation, cleared as a result of the **proposal** within the Hamersley **IBRA** subregion;
- (3) \$986 AUD (excluding GST) per hectare of **supporting habitat** for the following values cleared in the Hamersley **IBRA** subregion as a result of the **proposal**:
 - (a) northern quoll (*Dasyurus hallucatus*) **supporting habitat**;
 - (b) ghost bat (*Macroderma gigas*) **supporting habitat**;
 - (c) Pilbara olive phyton (*Liasis olivaceus barroni*) **supporting habitat**; and
 - (d) bilby (*Macrotis lagotis*) **supporting habitat**.
- (4) \$1,972 AUD (excluding GST) per hectare of **critical habitat** for the following values cleared in the Hamersley **IBRA** subregion as a result of the **proposal**:
 - (a) northern quoll (*Dasyurus hallucatus*) **critical habitat**.
- (5) \$1,972 (excluding GST) per hectare of **'Good' to 'Excellent' condition native vegetation** cleared as a result of the **proposal** within the Fortescue **IBRA** subregion;
- (6) \$3,944 (excluding GST) per hectare of **riparian vegetation** cleared as a result of the **proposal** within the Fortescue **IBRA** subregion;
- (7) \$1,972 (excluding GST) per hectare of **supporting habitat** for the following values cleared in the Fortescue **IBRA** subregion as a result of the **proposal**:
 - (a) northern quoll (*Dasyurus hallucatus*) **supporting habitat**;
 - (b) ghost bat (*Macroderma gigas*) **supporting habitat**;
 - (c) Pilbara olive phyton (*Liasis olivaceus barroni*) **supporting habitat**; and
 - (d) bilby (*Macrotis lagotis*) **supporting habitat**.

(8) \$3,944 (excluding GST) per hectare of **critical habitat** for the following values cleared in the Fortescue **IBRA** subregion as a result of the **proposal**:

(a) northern quoll (*Dasyurus hallucatus*) **critical habitat**.

B8-4 The rates in condition B8-3 change annually each subsequent financial year in accordance with the percentage change in the **CPI** applicable to that financial year.

B8-5 To achieve the **objective** in condition B8-1, the proponent must review and revise the Impact Reconciliation Procedure - Jimblebar Hub Iron Ore Mining Operations, December 2023 and submit to the **CEO** for approval. This procedure must:

- (1) spatially define the **environmental values** identified in condition B8-1;
- (2) spatially define the areas where offsets required by condition B8-1 are to be exempt;
- (3) include a methodology to calculate the amount of **clearing** undertaken during each year of the biennial reporting period for each of the **environmental values** identified in condition B8-3;
- (4) state that **clearing** calculation for the first biennial reporting period will commence from **ground disturbing activities** in accordance with condition B8-2 and end on the second 30 June following commencement of **ground disturbing activities**;
- (5) state that **clearing** calculations for each subsequent biennial reporting period will commence on 1 July of the required reporting period, unless otherwise agreed by the **CEO**; and
- (6) be prepared in accordance with Instructions on how to prepare *Environmental Protection Act 1986 Part IV Impact Reconciliation Procedures and Impact Reconciliation Reports* (or any subsequent revisions).

B8-6 The proponent must review, revise and submit an Impact Reconciliation Report in accordance with the **confirmed** Impact Reconciliation Procedure in condition B8-5.

B8-7 The Impact Reconciliation Report required pursuant to condition B8-6 must:

- (1) provide the location and spatial extent of the **clearing** undertaken as a result of the **proposal** during each year of each biennial reporting period; and

- (2) include evidence that **clearing** undertaken in any area was necessary for the commencement of **proposal**-related activities or **operations** in that cleared area within six (6) months of the **clearing** having occurred.

B8-8 The proponent may apply in writing and seek the written approval of the **CEO** to reduce all or part of the contribution payable under condition B8-2 where:

- (1) a payment has been made to satisfy a condition of an approval under the *Environment Protection and Biodiversity Conservation Act 1999* in relation to the **proposal**; and
- (2) the payment is made for the purpose of counterbalancing impacts of the **proposal** on matters of national environmental significance.

B8-9 The **CEO** may grant approval to discount the amount payable under condition B8-1(3) and condition B8-1(4) if the **CEO** is satisfied that the payment will offset the significant residual impacts of the **proposal**.

B8-10 The **clearing** of native vegetation authorised under Ministerial Statement 439 prior to 3 February 2015 and the 4,644 ha of **clearing** of native vegetation previously approved under Ministerial Statements 683, 809 and 857 prior to 22 October 2015 is exempt from the requirement to offset under condition B8-1.

B8-11 Condition C2 applies to the **confirmed** Impact Reconciliation Procedure required by condition B8-5 as if it were an environmental management plan.

B8-12 Failure to implement a **confirmed** Impact Reconciliation Procedure or submit an Impact Reconciliation Report as required by condition B8-6 represents a non compliance with these conditions.

PART C – ENVIRONMENTAL MANAGEMENT PLANS AND MONITORING

C1 Environmental Management Plans: Conditions Related to Commencement of Implementation of the Proposal

C1-1 The proponent must:

- (1) within twelve (12) months of the date of this Statement, or otherwise agreed to by the **CEO**, revise and submit the Environmental Management Plan required by conditions B1-6, B3-3, B3-4 and B3-5 to meet the requirements of those conditions;
- (2) within twelve (12) months of the date of this Statement, or otherwise agreed to by the **CEO**, submit the *Acacia corusca* Conservation and Research Plan required by condition B1-7 that meets the requirements of that condition;
- (3) within twelve (12) months of the date of this Statement, or otherwise agreed to by the **CEO**, submit the Rehabilitation Strategy required by condition B6-5, that meets the requirements of that condition;
- (4) within twelve (12) months of the date of this Statement, or otherwise agreed to by the **CEO**, and five-yearly thereafter, submit the Rehabilitation Performance Report required by condition B6-6 that meets the requirement of that condition;
- (5) within twelve (12) months of the date of this Statement and every five (5) years thereafter, or otherwise agreed to by the **CEO**, revise and submit the Mine Closure Plan required by condition B7-2 that meets the requirements of that condition, until the **CEO**, on advice of the Department of Mines, Petroleum and Exploration; the Department of Water and Environmental Regulation and the **DBCA**, has **confirmed** in writing that the Mine Closure Plan required by condition B7-2 meets the requirement of that condition; and
- (6) within twelve (12) months of the date of this Statement revise and submit the Impact Reconciliation Procedure (Offsets) required by condition B7-6 that meets the requirements of that condition.

C2 Environmental Management Plans: Conditions Relating to Approval, Implementation, Review and Publication

C2-1 Upon being required to implement an environmental management plan under Part B, or after receiving notice in writing from the **CEO** under condition C1-1 that the environmental management plan(s) required by conditions B6-5, B6-6 and B7-2 satisfies the relevant requirements, or after receiving notice in writing

from the **CEO**, on advice from **DBCA**, under condition C1-1 that the environmental management plan(s) required under condition B1-6 and B6-5 satisfies the relevant requirements, the proponent must:

- (1) implement the most recent version of the **confirmed** environmental management plan; and
- (2) continue to implement the **confirmed** environmental management plan referred to in condition C2-1(1), other than for any period which the **CEO** confirms by notice in writing that it has been demonstrated that the relevant requirements for the environmental management plan have been met, or are able to be met under another statutory decision-making process, in which case the implementation of the environmental management plan is no longer required for that period.

C2-2 The proponent:

- (1) may review and revise a **confirmed** environmental management plan provided it meets the relevant requirements of that environmental management plan, including any consultation that may be required when preparing the environmental management plan;
- (2) must review and revise a **confirmed** environmental management plan and ensure it meets the relevant requirements of that environmental management plan, including any consultation that may be required when preparing the environmental management plan, as and when directed by the **CEO**; and
- (3) must revise and submit to the **CEO** the **confirmed** Environmental Management Plan if there is a material risk that the **outcomes** or **objectives** it is required to achieve will not be complied with, including but not limited to as a result of a change to the **proposal**.

C2-3 Despite condition C2-1, but subject to conditions C2-4 and C2-5, the proponent may implement minor revisions to an environmental management plan if the revisions will not result in new or increased **adverse impacts** to the environment or result in a risk to the achievement of the limits, **outcomes** or **objectives** which the environmental management plan is required to achieve.

C2-4 If the proponent is to implement minor revisions to an environmental management plan under condition C2-3, the proponent must provide the **CEO** with the following at least twenty (20) business days before it implements the revisions:

- (1) the revised environmental management plan clearly showing the minor revisions;

- (2) an explanation of and justification for the minor revisions; and
- (3) an explanation of why the minor revisions will not result in new or increased **adverse impacts** to the environment or result in a risk to the achievement of the limits, **outcomes** or **objectives** which the environmental management plan is required to achieve.

C2-5 The proponent must cease to implement any revisions which the **CEO** notifies the proponent (at any time) in writing may not be implemented.

C2-6 **Confirmed** environmental management plans, and any revised environmental management plans under condition C2-4(1), must be published on the proponent's website and provided to the **CEO** in electronic form suitable for on-line publication by the Department of Water and Environmental Regulation within twenty (20) business days of being implemented, or being required to be implemented (whichever is earlier).

C3 Conditions Related to Monitoring

C3-1 The proponent must undertake monitoring capable of:

- (1) substantiating whether the **proposal** limitations and extents in Part A are exceeded; and
- (2) **detecting** and substantiating whether the environmental **outcomes** identified in Part B are achieved (excluding any environmental **outcomes** in Part B where an environmental management plan is expressly required to monitor achievement of that outcome).

C3-2 The proponent must submit as part of the Compliance Assessment Report required by condition D2, a compliance monitoring report that:

- (1) outlines the monitoring that was undertaken during the implementation of the **proposal**;
- (2) identifies why the monitoring was capable of substantiating whether the **proposal** limitation and extents in Part A are exceeded;
- (3) for any environmental **outcomes** to which condition C3-1(2) applies, identifies why the monitoring was scientifically robust and capable of **detecting** whether the environmental **outcomes** in Part B are met;
- (4) outlines the results of the monitoring;
- (5) reports whether the **proposal** limitations and extents in Part A were exceeded and (for any environmental **outcomes** to which condition C3-1(2) applies) whether the environmental **outcomes** in Part B were achieved, based on analysis of the results of the monitoring; and

- (6) reports any actions taken by the proponent to remediate any potential non-compliance.

C4 Environmental Management Plans: Conditions Relating to Monitoring and Adaptive Management for Outcomes Based Conditions

C4-1 The environmental management plans required under conditions B1-6, B3-3, B3-4, B3-5, B6-5 and B7-2 must contain provisions which enable the substantiation of whether the relevant **outcomes** of those conditions are met, and must include:

- (1) **threshold criteria** that provide a limit beyond which the environmental **outcomes** are not achieved;
- (2) **trigger criteria** that will provide an early warning that the environmental **outcomes** are not likely to be met;
- (3) monitoring parameters, sites, control/reference sites, methodology, timing and frequencies which will be used to measure **threshold criteria** and **trigger criteria**. Include methodology for determining alternate monitoring sites as a contingency if proposed sites are not suitable in the future;
- (4) baseline data;
- (5) data collection and analysis methodologies;
- (6) adaptive management methodology;
- (7) **contingency measures** which will be implemented if **threshold criteria** or **trigger criteria** are not met; and
- (8) reporting requirements.

C4-2 Without limiting condition C3-1, failure to achieve an environmental outcome, or the exceedance of a **threshold criteria**, regardless of whether **threshold contingency measures** have been or are being implemented, represents a non-compliance with these conditions.

C5 Environmental Management Plans: Conditions Related to Management Actions and Targets for Objective Based Conditions

C5-1 The environmental management plan required under condition B1-6 must contain provisions which enable the achievement of the relevant **objectives** of those conditions and substantiation of whether the **objectives** are reasonably likely to be met, and must include:

- (1) **management actions**;

- (2) **management targets;**
- (3) **contingency measures** if **management targets** are not met; and
- (4) reporting requirements.

C5-2 Without limiting condition C2-1, the failure to achieve an environmental **objective**, or implement a **management action**, regardless of whether **contingency measures** have been or are being implemented, represents a non-compliance with these conditions.

PART D – COMPLIANCE, TIME LIMITS, AUDITS AND OTHER CONDITIONS

D1 Non-compliance Reporting

D1-1 If the proponent becomes aware of a potential non-compliance, the proponent must:

- (1) report this to the **CEO** within seven (7) days;
- (2) implement **contingency measures**;
- (3) investigate the cause;
- (4) investigate environmental impacts;
- (5) advise rectification measures to be implemented;
- (6) advise any other measures to be implemented to ensure no further impact;
- (7) advise timeframe in which contingency, rectification and other measures have and/or will be implemented; and
- (8) provide a report to the **CEO** within twenty-one (21) days of being aware of the potential non-compliance, detailing the measures required in conditions D1-1(1) to D1-1(7) above.

D1-2 Failure to comply with the requirements of a condition, or with the content of an environmental management plan required under a condition, constitutes a non-compliance with these conditions, regardless of whether the **contingency measures**, rectification or other measures in condition D1-1 above have been or are being implemented.

D2 Compliance Reporting

D2-1 The proponent must provide an annual Compliance Assessment Report to the **CEO** for the purpose of determining whether the implementation conditions are being complied with.

D2-2 Unless a different date or frequency is approved by the **CEO**, the first annual Compliance Assessment Report must be submitted within fifteen (15) months of the date of this Statement, and subsequent reports must be submitted annually from that date.

D2-3 Each annual Compliance Assessment Report must be endorsed by the proponent's Chief Executive Officer, or a person approved by proponent's Chief Executive Officer to be delegated to sign on the Chief Executive Officer's behalf.

D2-4 Each annual Compliance Assessment Report must:

- (1) state whether each condition of this Statement has been complied with, including:
 - (a) exceedance of any **proposal** limits and extents;
 - (b) achievement of environmental **outcomes**;
 - (c) achievement of environmental **objectives**;
 - (d) requirements to implement the content of environmental management plans;
 - (e) monitoring requirements;
 - (f) implement **contingency measures**;
 - (g) requirements to implement adaptive management; and
 - (h) reporting requirements;
- (2) include the results of any monitoring (inclusive of any raw data) that has been required under Part C in order to demonstrate that the limits in Part A, and any **outcomes** or any **objectives** are being met;
- (3) provide evidence to substantiate statements of compliance, or details of where there has been a non-compliance;
- (4) include the corrective, remedial and preventative actions taken in response to any potential non-compliance;
- (5) be provided in a form suitable for publication on the proponent's website and online by the Department of Water and Environmental Regulation; and
- (6) be prepared and published consistent with the latest version of the Compliance Assessment Plan required by condition D2-5 which the **CEO** has **confirmed** by notice in writing satisfies the relevant requirements of Part C and Part D.

D2-5 The proponent must prepare a Compliance Assessment Plan which is submitted to the **CEO** at least six (6) months prior to the first Compliance Assessment Report required by condition D2-2, or prior to implementation of the **proposal**, whichever is sooner.

D2-6 The Compliance Assessment Plan must include:

- (1) what, when and how information will be collected and recorded to assess compliance;
- (2) the methods which will be used to assess compliance;

- (3) the methods which will be used to validate the adequacy of the compliance assessment to determine whether the implementation conditions are being complied with;
- (4) the retention of compliance assessments;
- (5) the table of contents of Compliance Assessment Reports, including audit tables; and
- (6) how and when Compliance Assessment Reports will be made publicly available, including usually being published on the proponent's website within sixty (60) days of being provided to the **CEO**.

D3 Contact Details

D3-1 The proponent must notify the **CEO** of any change of its name, physical address or postal address for the serving of notices or other correspondence within twenty-eight (28) days of such change. Where the proponent is a corporation or an association of persons, whether incorporated or not, the postal address is that of the principal place of business or of the principal office in the State.

D4 Time Limit for Proposal Implementation

D4-1 The **proposal** must be **substantially commenced** within five (5) years from the date of this Statement.

D4-2 The proponent must provide to the **CEO** documentary evidence demonstrating that they have complied with condition D4-1 no later than thirty (30) days after **substantial commencement**.

D4-3 If the **proposal** has not been **substantially commenced** within the period specified in condition D4-1, implementation of the **proposal** must not be commenced or continued after the expiration of that period.

D5 Public Availability of Data

D5-1 Subject to condition D5-2, within a reasonable time period approved by the **CEO** upon the issue of this Statement and for the remainder of the life of the **proposal**, the proponent must make publicly available, in a manner approved by the **CEO**, all validated environmental data collected before and after the date of this Statement relevant to the **proposal** (including sampling design, sampling methodologies, monitoring and other empirical data and derived information products (e.g. maps)), environmental management plans and reports relevant to the assessment of this **proposal** and implementation of this Statement.

D5-2 If:

- (1) any data referred to in condition D5-1 contains trade secrets; or

- (2) any data referred to in condition D5-1 contains particulars of confidential information (other than trade secrets) that has commercial value to a person that would be, or could reasonably be expected to be, destroyed or diminished if the confidential information were published,

the proponent may submit a request for approval from the **CEO** to not make this data publicly available and the **CEO** may agree to such a request if the **CEO** is satisfied that the data meets the above criteria.

- D5-3 In making such a request the proponent must provide the **CEO** with an explanation and reasons why the data should not be made publicly available.

D6 Independent Audit

- D6-1 The proponent must arrange for an independent audit of compliance with the conditions of this Statement, including achievement of the environmental **outcomes** and/or the environmental **objectives** and/or environmental performance with the conditions of this Statement, as and when directed by the **CEO**.

- D6-2 The independent audit must be carried out by a person with appropriate qualifications who is nominated or approved by the **CEO** to undertake the audit under condition D6-1.

- D6-3 The proponent must submit the independent audit report with the Compliance Assessment Report required by condition D2, or at any time as and when directed in writing by the **CEO**. The audit report is to be supported by credible evidence to substantiate its findings.

- D6-4 The independent audit report required by condition D6-1 is to be made publicly available in the same timeframe, manner and form as a Compliance Assessment Report, or as otherwise directed by the **CEO**.

[signed on 8 December 2025]

Hon. Matthew Swinbourn BA LLB MLC
MINISTER FOR THE ENVIRONMENT; COMMUNITY SERVICES; HOMELESSNESS

Key decision-making authorities consulted under section 45(2):
Minister for Aboriginal Affairs Minister for Mines and Petroleum Minister for State Development

Table 1: Abbreviations and definitions

Acronym or abbreviation	Definition or term
Aboriginal cultural heritage	Means the tangible and intangible elements that are important to the Aboriginal people of the state, and are recognised through social, spiritual, historical, scientific or aesthetic values, as part of Aboriginal tradition to the extent they directly affect or are affected by physical or biological surroundings.
Aboriginal site(s)	As defined in section 4 and 5 under the <i>Aboriginal Heritage Act 1972</i> .
Adverse impact(s)	Negative change that is neither trivial nor negligible that could result in a reduction in health, diversity or abundance of the receptor/s being impacted, or a reduction in environmental value. Adverse impacts can arise from direct or indirect impacts, or other impacts from the proposal .
Bat deflectors	Suitable design, feature or modification to barbed wire fencing to increase its visibility and reduce bat collision and entanglement.
CEO	The Chief Executive Officer of the Department of the Public Service of the State responsible for the administration of section 48 of the <i>Environmental Protection Act 1986</i> , or the CEO's delegate.
Clearing / clearing activities	Has the same meaning as in section 51A of the <i>Environmental Protection Act 1986</i> .
Conceptual footprint	Refers to the current indicative layout of the direct disturbance footprint of the proposal , which includes key elements such as mine pits and waste rock landforms, as well as infrastructure.
Confirmed	<p>In relation to a plan required to be made and submitted to the CEO, means, at the relevant time, the plan that the CEO confirmed, by notice in writing, meets the requirements of the relevant condition.</p> <p>In relation to a plan required to be implemented without the need to be first submitted to the CEO, means that plan until it is revised, and then means, at the relevant time, the plan that the CEO confirmed, by notice in writing, meets the requirements of the relevant condition.</p>
Construction	Activities that are associated with the substantial implementation of a proposal including but not limited to, earthmoving, vegetation clearing , grading or construction of right of way. Construction activities do not include Geotechnical investigations (including potholing for services and the installation of piezometers) and other preconstruction activities where no clearing of vegetation is required.
Contingency measures	Planned actions for implementation if it is identified that an environmental outcome, environmental objectives , threshold criteria , or management target are likely to be, or are being,

Acronym or abbreviation	Definition or term
	exceeded. Contingency measures include changes to operations or reductions in disturbance or adverse impacts to reduce impacts and must be decisive actions that will quickly bring the impact to below any relevant threshold, management target and to ensure that the environmental outcome and/or objective can be met.
CPI	The All Groups Consumer Price Index numbers for Perth compiled and published by the Australian Bureau of Statistics.
Critical habitat	Refers to gorge/gully and breakaway/cliff habitats shown in Figure 6.
DBCA	Means the Department responsible for administration of the <i>Biodiversity Conservation Act 2016</i> which at the time of writing is the Department of Biodiversity, Conservation and Attractions (DBCA).
Detect / detecting	The smallest statistically discernible effect size that can be achieved with a monitoring strategy designed to achieve a statistical power value or measure of at least 0.8 or an alternative value as determined by the CEO .
Development envelope	The maximum area within which the proposal will be located, and consistent with the Proposal Content Document for the proposal as referred to in the Introduction to this Statement.
Disturb / disturbing / disturbance	<p>Means directly has or materially contributes to the disturbance effect on health, diversity or abundance of the receptor/s being impacted or on an environmental value.</p> <p>In relation to flora, vegetation or fauna habitat, includes to result in the death, destruction, removal, severing or doing substantial damage to.</p> <p>In relation to fauna, includes to have the effect of altering the natural behaviour of fauna to its detriment.</p>
Disturbance footprint	The location within which the physical proposal elements will occur.
EMP	Environmental Management Plan.
Environmental harm	Has the meaning provided by section 3A(2) of the <i>Environmental Protection Act 1986</i> .
Environmental value	A beneficial use, or ecosystem health condition.
Ethel Gorge TEC	The Ethel Gorge aquifer stygobiont community known from the Ethel Gorge (Ophthalmia Basin) alluvium calcrete aquifer on the Fortescue River in the vicinity of the town of Newman, listed as threatened under the <i>Biodiversity Conservation Act 2016</i> .
Fauna handler	A person who is qualified and has attained the appropriate licence/s and authorisation/s under section 40 of the <i>Biodiversity</i>

Acronym or abbreviation	Definition or term
	<i>Conservation Act 2016</i> and the Biodiversity Conservation Regulations 2018.
Fauna spotter	A person who is suitably trained in species identification, who does not perform any handling of animals where a licence to do so is required.
GL/a	Gigalitres per annum
'Good' to 'Excellent' condition native vegetation	Means vegetation that has been rated 'good', 'excellent' or any value between these ratings, in accordance with the <i>Technical Guidance – Flora and Vegetation Surveys for Environmental Impact Assessment</i> (EPA 2016) including any revision to this technical guidance.
Gorge/gully habitat	The area defined as the habitat type “gorge/gully” in the report and supporting spatial data in the Jimblebar Hub Iron Ore Mining Operations Significant Amendment Environmental Review Document (BHP 2025) (Figure 9-3 and 9-4).
Greenhouse gas emissions	Greenhouse gas emissions expressed as tonnes of carbon dioxide equivalent (CO ₂ -e) as calculated in accordance with the definition of 'carbon dioxide equivalence in Section 7 of the <i>National Greenhouse and Energy Reporting Act 2007</i> (Cth) or, if that definition is amended or repealed, the meaning set out in an Act, regulation or instrument concerning greenhouse gases as specified by the Minister.
Ground disturbing activities	Any activity or activities undertaken in the implementation of the proposal , including any clearing , civil works or construction .
Ha	Hectare
Hillcrest/hillslope habitat	The area defined as the habitat type “hillcrest/hillslope” in the report and supporting spatial data in the Jimblebar Hub Iron Ore Mining Operations Significant Amendment Environmental Review Document (BHP 2025) (Figures 9-3 and 9-4).
IBRA	Interim Biogeographic Regionalisation for Australia.
km	kilometre
km/hr	Kilometre(s) per hour.
Local provenance	Refers to the Hamersley and Fortescue IBRA subregions as delineated by the PIL03 of Interim Biogeographic Regionalisation for Australia, Version 7 (DCCEEW).
m	Metres
Major Drainage Line	The area defined as the habitat type “major drainage line” in the report and supporting spatial data in the Jimblebar Hub Iron Ore Mining Operations Significant Amendment Environmental Review Document (BHP 2025) (Figures 9-3 and 9-4).

Acronym or abbreviation	Definition or term
Management action(s)	The identified actions implemented with the intent of achieving the environmental objective .
Management target(s)	A type of indicator to evaluate whether an environmental objective is being achieved.
MAR	Managed aquifer recharge.
Maternity season	Period between 1 October to 31 December for ghost bats (<i>Macroderma gigas</i>) and 1 June to 30 November for grey falcons (<i>Falco hypoleucos</i>).
mbgl	Meters below ground level.
Mining Exclusion Zones	Mining Exclusion Zones apply within 50 m of individuals of <i>Acacia corusca</i> (P1) for the proposal and to within 300 m for the significant amendment , as shown in Figures 4a and 4b. Mining Exclusion Zones apply to within 50 m and 100 m of ghost bat category 3 and 4 caves, as shown in Figure 8.
Native title party/parties	As defined in section 18(1AA) under the <i>Aboriginal Heritage Act 1972</i> .
Objectives	An objective is the proposal -specific desired state for an environmental factor(s) to be achieved from the implementation of management actions .
Operations / Commencement of operations	Operation of the plant infrastructure for the proposal and includes pre-commissioning, commissioning, start-up and operation of the plant infrastructure for the proposal .
Outcomes	A proposal-specific result to be achieved when implementing the proposal .
Pilbara Environmental Offsets Fund	A special purpose account created pursuant to section 16(1)(d) of the <i>Financial Management Act 2006</i> by the Department of Water and Environmental Regulation.
Pollution	Has the meaning provided by section 3A(1) of the <i>Environmental Protection Act 1986</i> .
Pre-clearance survey(s)	Surveys designed to identify the presence or evidence of threatened and priority flora and fauna species listed under the <i>Biodiversity Conservation Act 2016</i> prior to ground disturbing activities in accordance with the relevant EPA Guidance.
Pre-clearance inspection(s)	Means a search of immediate impact areas prior to clearing to locate fauna. The pre-clearance inspections should focus on locating nests, burrows, recent foraging signs, fresh tracks and scats. Refer to DBCA guidelines.
Priority flora	Flora listed as priority by DBCA .

Acronym or abbreviation	Definition or term
Progressive manner	In relation to rehabilitation , the stage treatment of disturbed areas during exploration, construction , development and mining operation as soon as these areas become available.
Proposal	The proposal is the entire proposal , which includes the existing approved proposal , plus the expansion (significant amendment).
Reasonable steps to consult	As outlined in the EPA's <i>Technical Guidance Environmental impact assessment of Social Surroundings – Aboriginal cultural heritage</i> , as amended from time to time.
Rehabilitation	A process which aims to maximise the return of biodiversity to disturbed land by reinstating self-sustaining and functional ecosystems based on local species.
Riparian vegetation	Vegetation type identified as MA EcrEv AciApypMg CcEuaTt in Table 8-3 of the Jimblebar Hub Iron Ore Mining Operations Significant Amendment Environmental Review Document – referral supplementary report (BHP 2025).
Safeguard Legislation	The Commonwealth <i>National Greenhouse and Energy Reporting Act 2007 and associated National Greenhouse and Energy Reporting (Safeguard Mechanism) Rule 2015</i> .
Self-sustaining	Vegetation that can survive without intervention such as water or maintenance. A self-sustaining ecosystem has the potential to persist indefinitely under existing environmental conditions, but its composition, structure and function may fluctuate in response to periodic stress or disturbance , or may evolve as environmental conditions change (adapted from SER 2004).
Significant amendment	Is the expansion of the approved proposal as described and documented in Table 2 of the proponents Proposal Content Document dated 15 (December 2023).
Substantially commenced/ substantial commencement	Substantial commencement is more than the preparatory works for a proposal and generally includes ground disturbance activities which are solely attributed to proposal elements described in the proposal content document, and a substantial portion of the total disturbance and infrastructure works physically commenced.
Supporting habitat	Fauna habitat mapped as sand plain and mulga woodland habitats for greater bilby (<i>Macrotis lagotis</i>). Fauna habitat mapped as major drainage line , minor drainage line, hillcrest/hillslope and stony plain habitats for northern quoll (<i>Dasyurus hallucatus</i>). Fauna habitat mapped as drainage area/floodplain, major drainage line , minor drainage line, breakaway/cliff, hillcrest/hillslope , gorge/gully , mulga woodland, sand plain and stony plain habitats for ghost bat (<i>Macroderma gigas</i>).

Acronym or abbreviation	Definition or term
	Fauna habitat mapped as hillcrest/hillslope, gorge/gully, major drainage line and breakaway/cliff habitats for Pilbara olive python (<i>Liasis olivaceus barroni</i>).
Threatened fauna	Fauna listed as threatened under the <i>Biodiversity Conservation Act 2016</i> or the Commonwealth <i>Environment Protection and Biodiversity Conservation Act 1999</i> .
Threshold criteria	The indicators that have been selected to represent limits of impact beyond which the environmental outcome is not being met.
Trigger criteria	Indicators that have been selected for monitoring to provide a warning that, if exceeded, the environmental outcome may not be achieved. They are intended to forewarn of the approach of the threshold criteria and trigger response actions.
Viability	In relation to flora, where there is evidence of seed germination and growth, and the population remains within natural variation.

Figures (attached)

- Figure 1 Jimblebar Hub Significant Amendment
- Figure 2 Jimblebar Hub - approved proposals
- Figure 3 Jimblebar Hub Proposal Assessment Area
- Figure 4a *Acacia corusca*, and related Mining Exclusion Zone for the significant amendment
- Figure 4b *Acacia corusca*, and related Mining Exclusion Zone for the approved proposal
- Figure 5 Pre-clearance priority flora survey areas
- Figure 6 Fauna habitats within the development envelope
- Figure 7 Impacted ghost bat cave (CJIM-04) within the development
- Figure 8 Ghost bat Mining Exclusion Zones

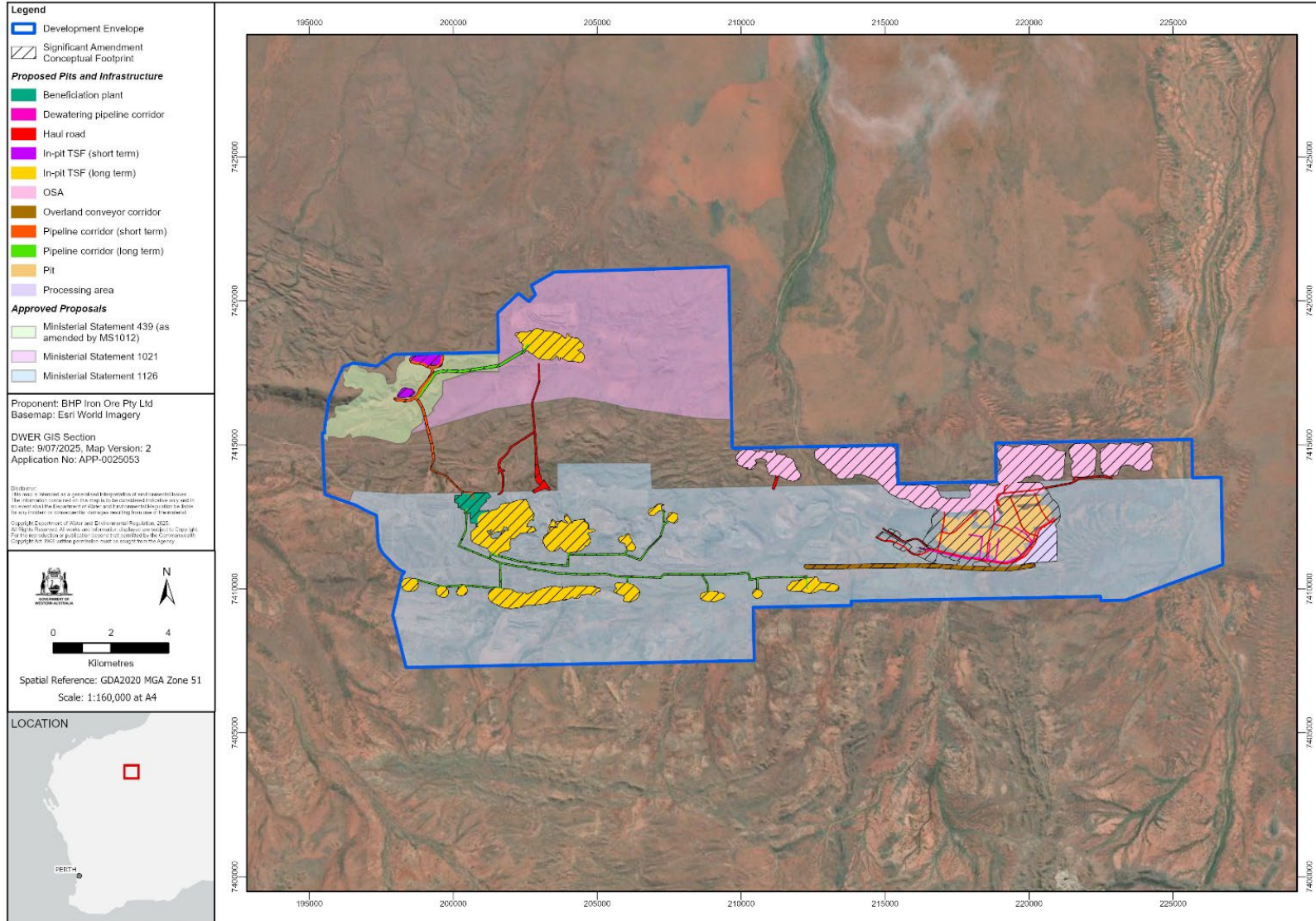


Figure 1: Jimblebar Hub Significant Amendment

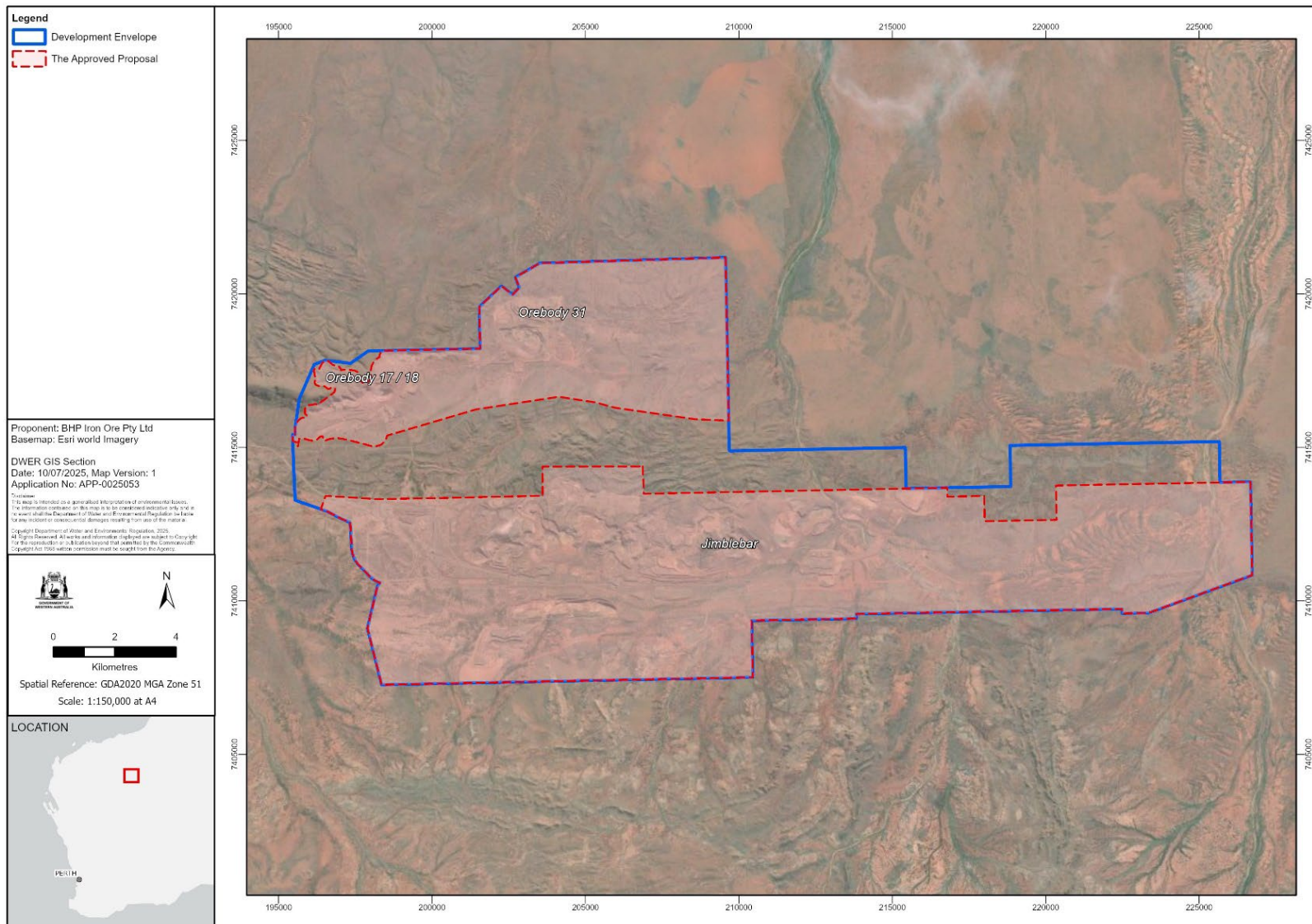


Figure 2: Jimblebar Hub - approved proposals

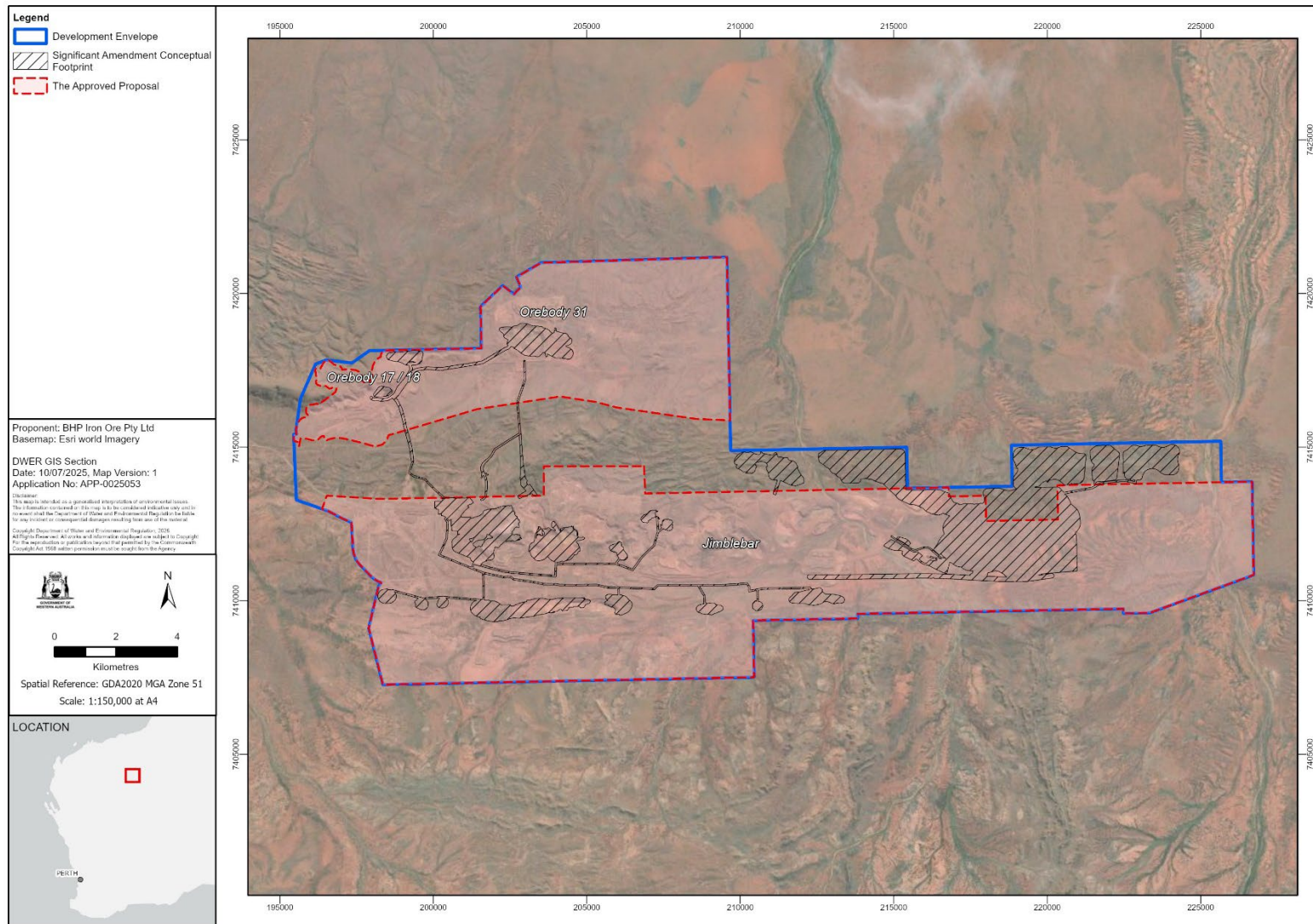


Figure 3: Jimblebar Hub Proposal Assessment Area

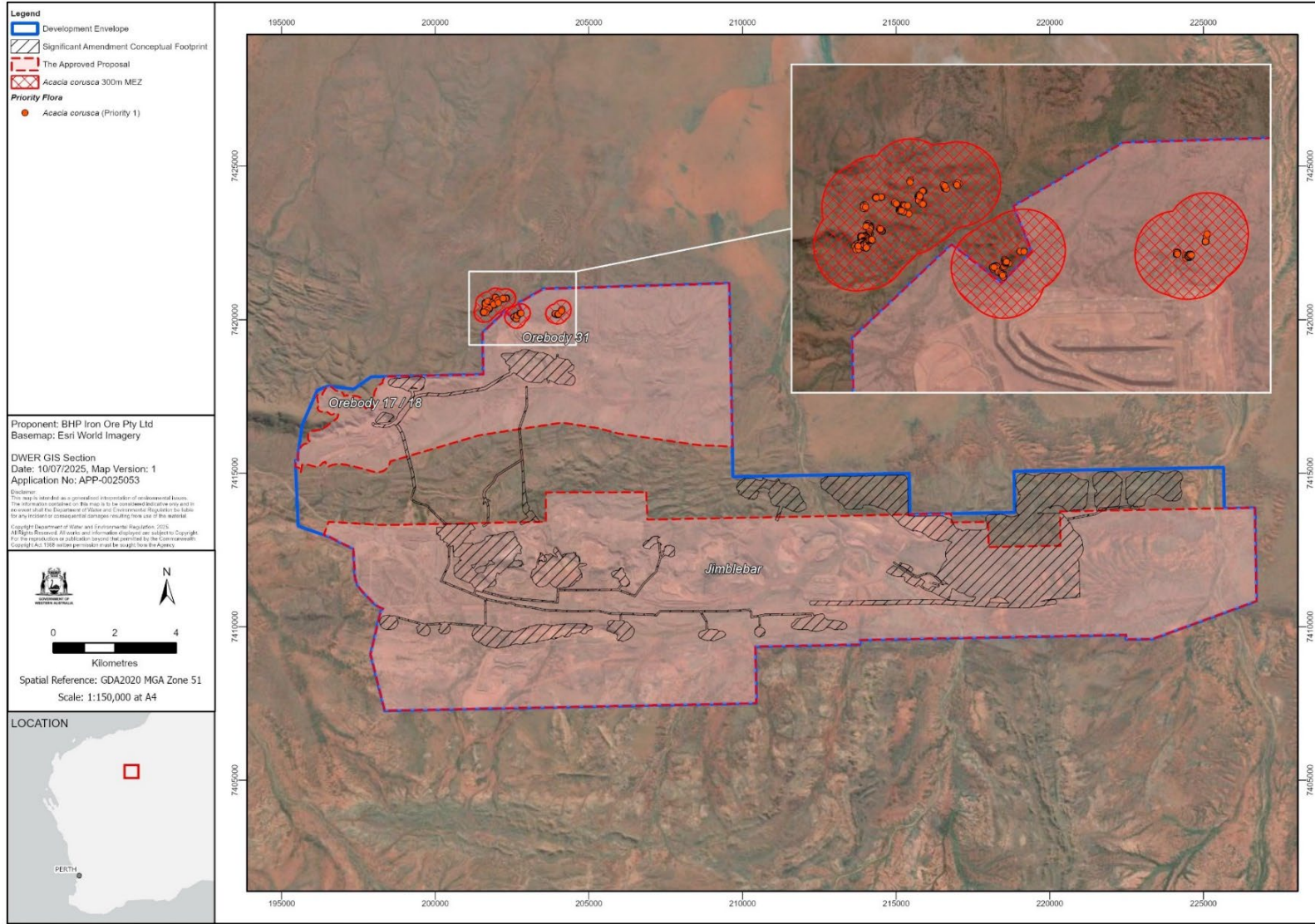
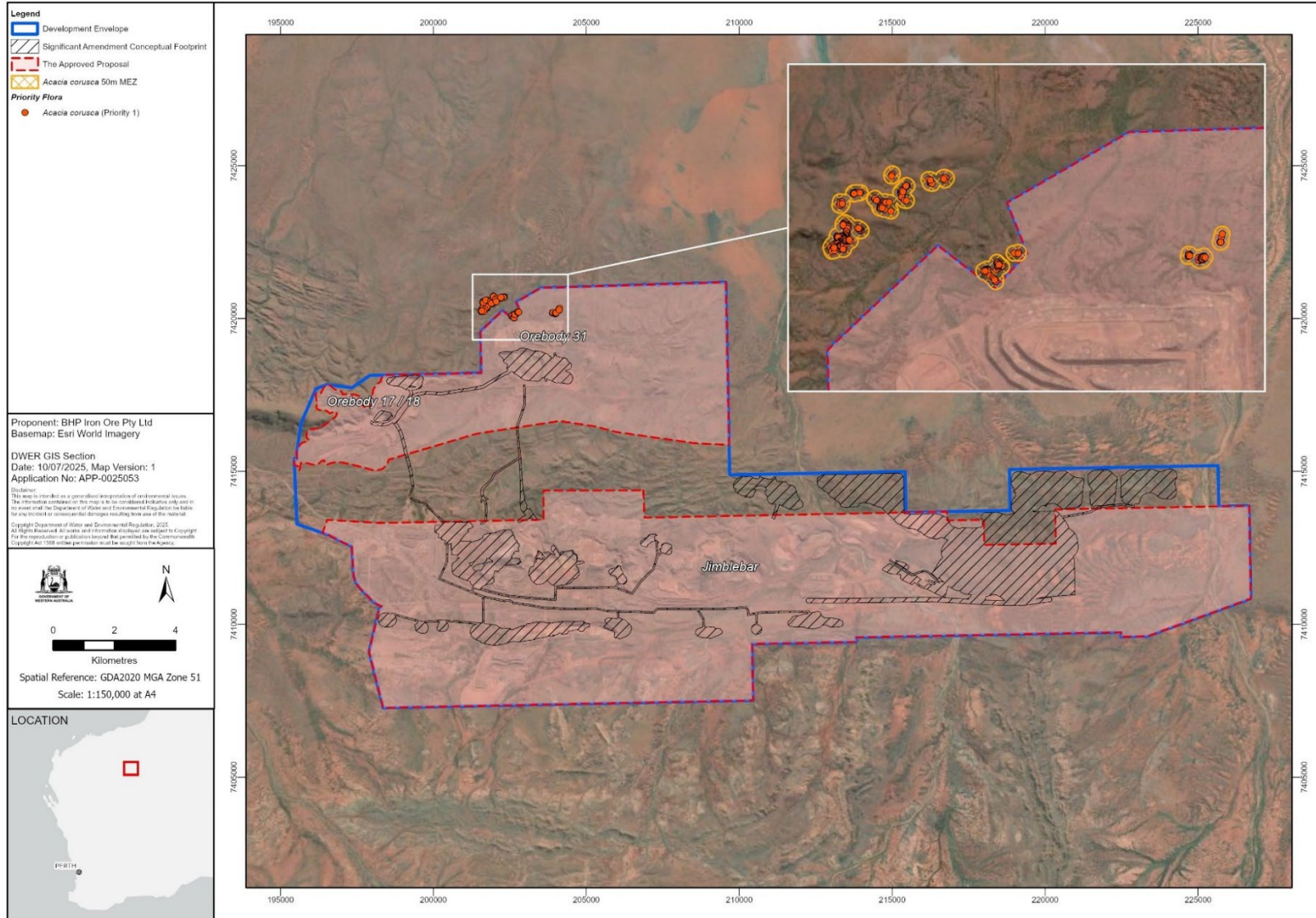


Figure 4a: *Acacia corusca*, and related Mining Exclusion Zone for the significant amendment



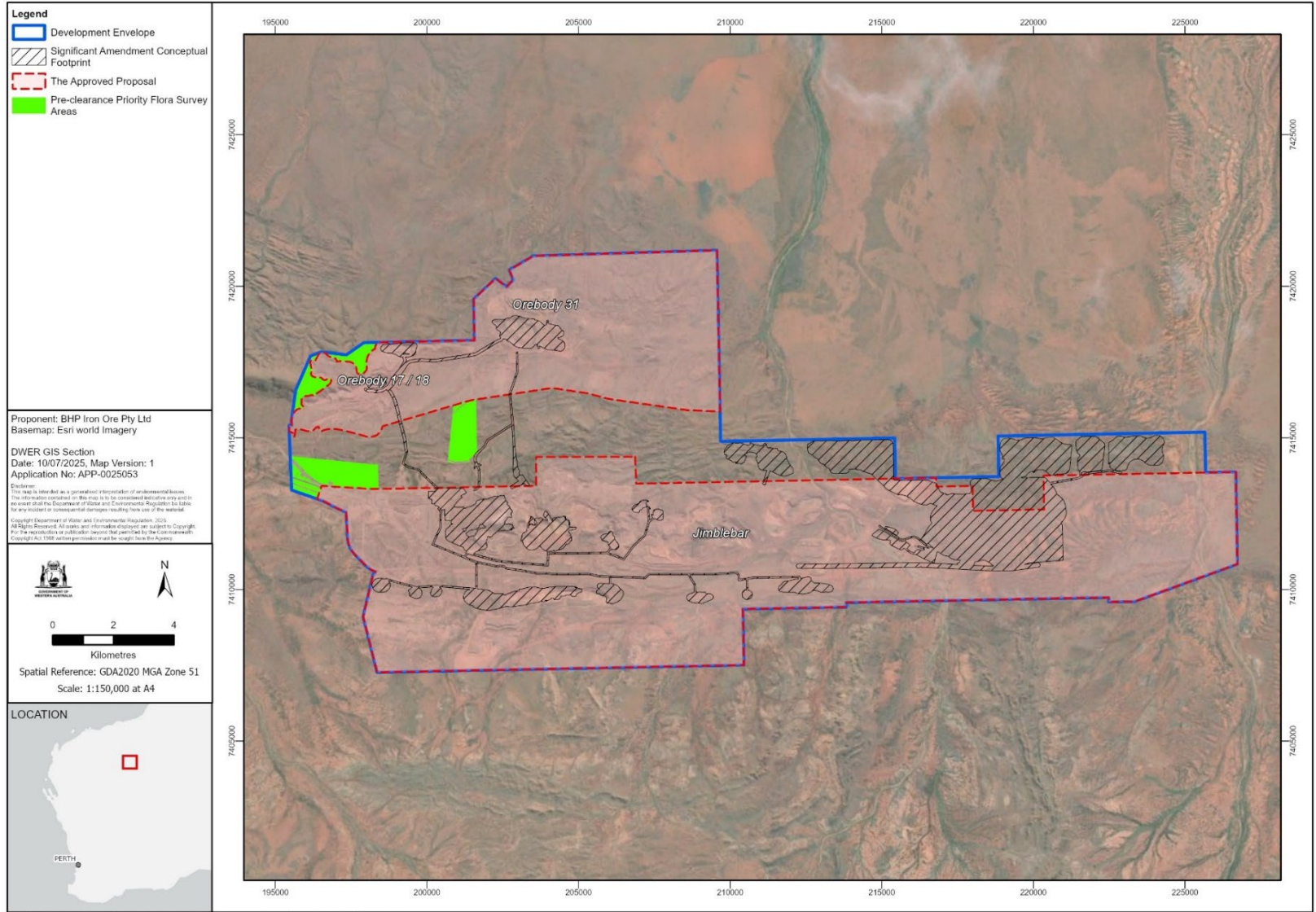


Figure 5: Pre-clearance priority flora survey areas

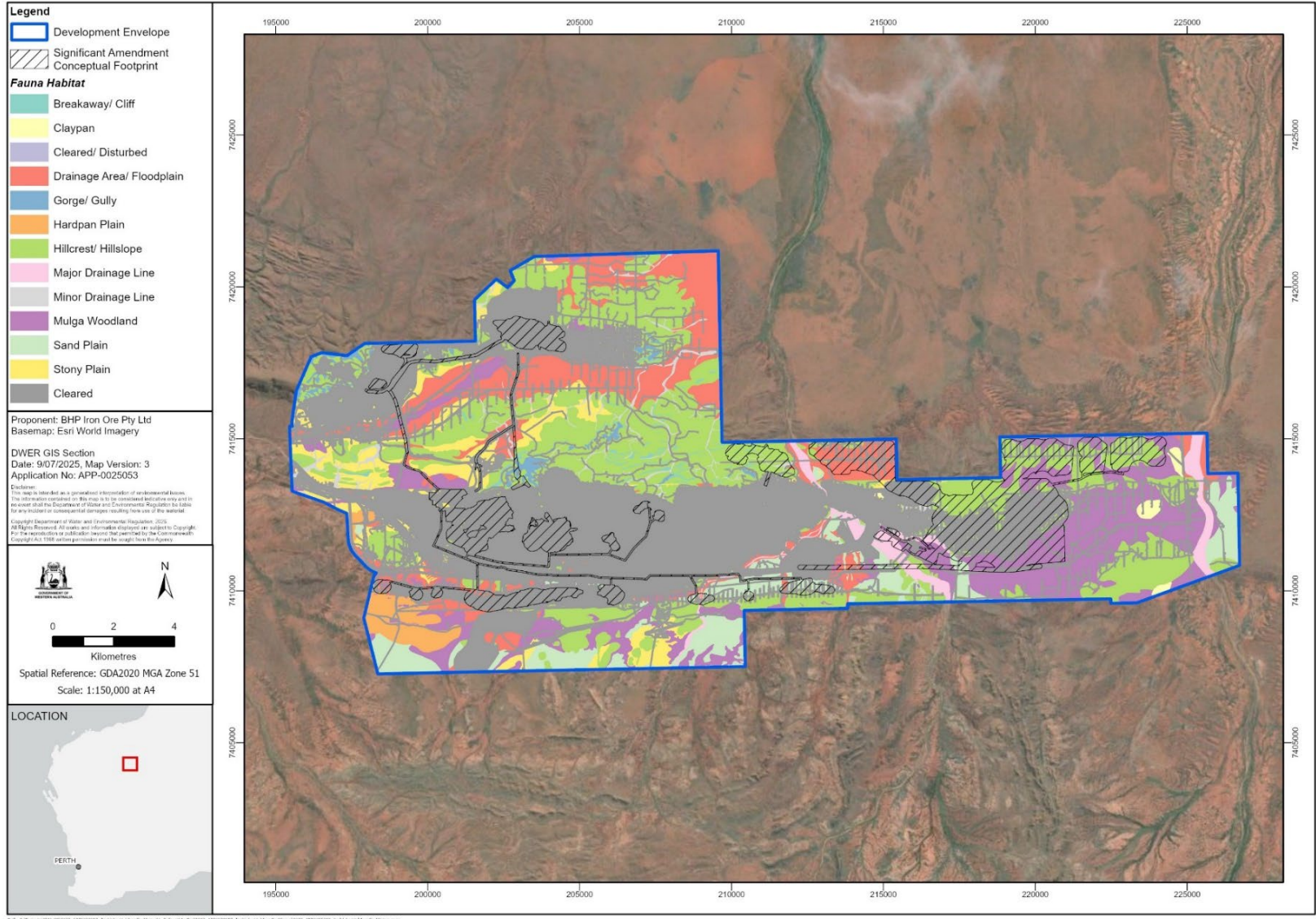


Figure 6: Fauna habitats within the development envelope

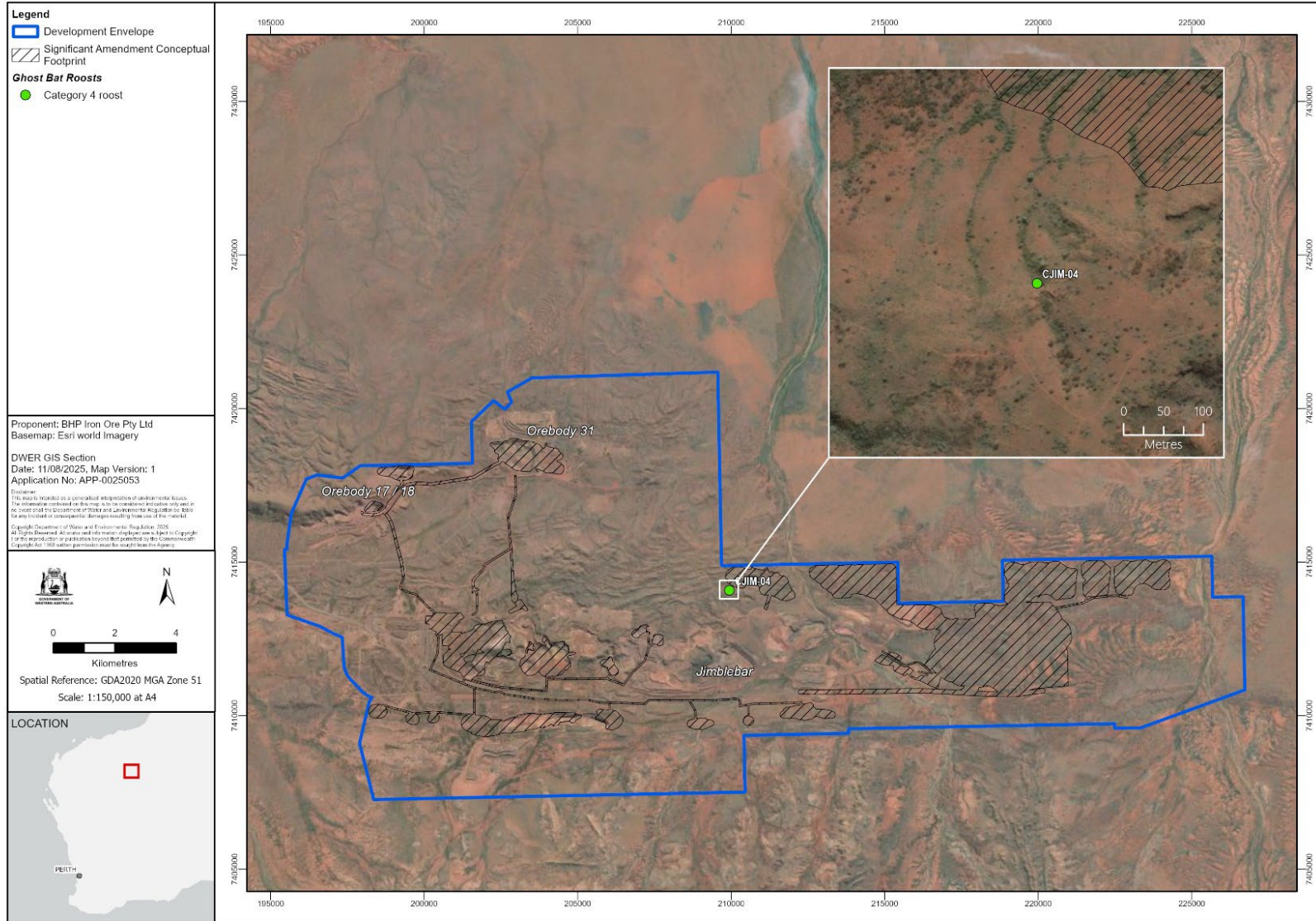


Figure 7: Impacted ghost bat cave (CJIM-04) within the development envelope

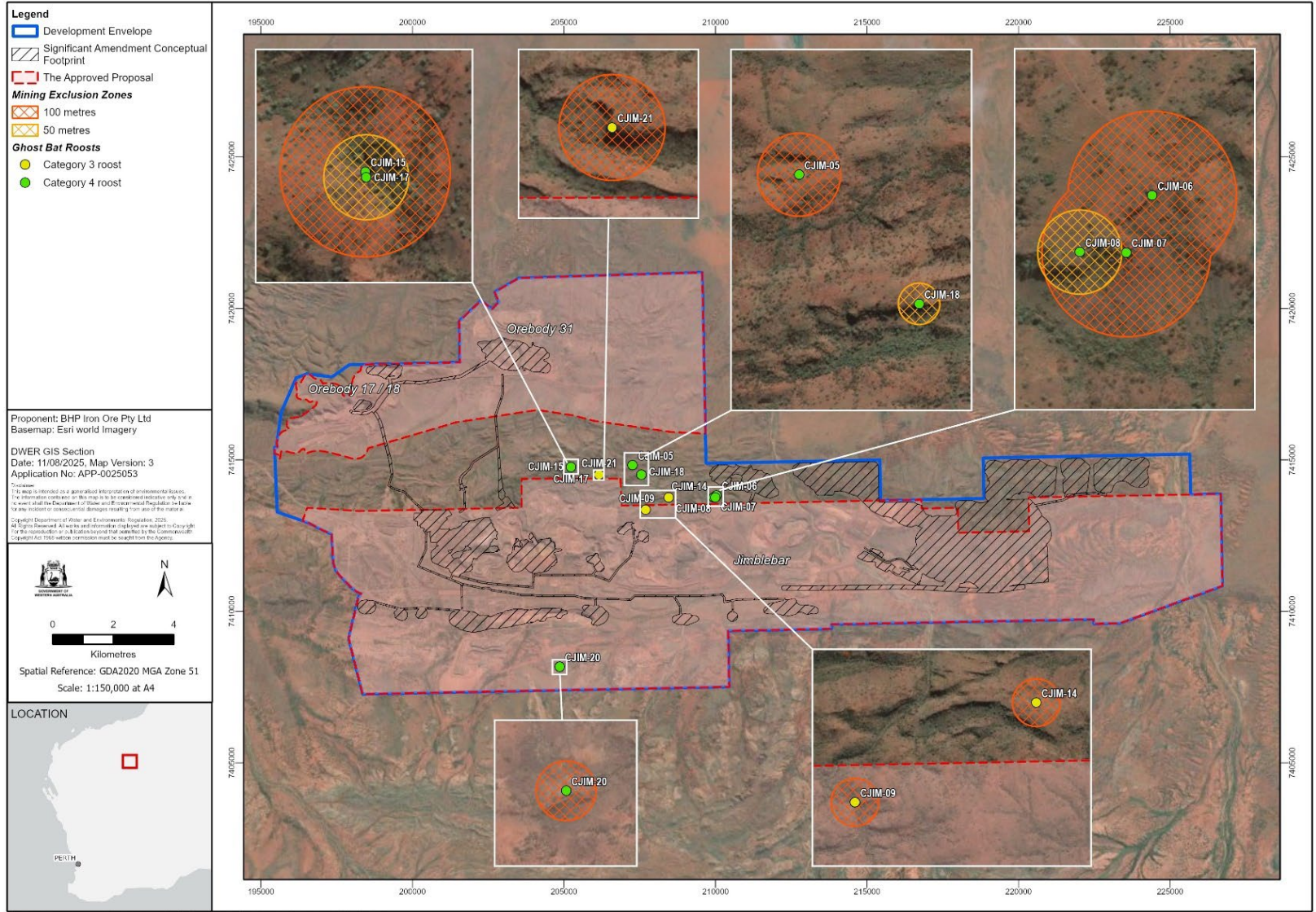


Figure 8: Ghost bat Mining Exclusion Zones

Schedule 1

All co-ordinates are in metres, listed in Map Grid of Australia Zone 51 (MGA Zone 51), datum of Geocentric Datum of Australia 2020 (GDA20).

Spatial data depicting the figures are held by the Department of Water and Environmental Regulation. Record no. DWERDT1199040.