

STATUS OF THIS DOCUMENT

This document has been produced by the Office of the Appeals Convenor as an electronic version of the original Statement for the proposal listed below as signed by the Minister and held by this Office. Whilst every effort is made to ensure its accuracy, no warranty is given as to the accuracy or completeness of this document. The State of Western Australia and its agents and employees disclaim liability, whether in negligence or otherwise, for any loss or damage resulting from reliance on the accuracy or completeness of this document. Copyright in this document is reserved to the Crown in right of the State of Western Australia. Reproduction except in accordance with copyright law is prohibited.

Published on: 28 October 2010

Statement No: 844

**STATEMENT THAT A PROPOSAL MAY BE IMPLEMENTED
(PURSUANT TO THE PROVISIONS OF THE
ENVIRONMENTAL PROTECTION ACT 1986)**

**MACEDON GAS DEVELOPMENT
SHIRE OF ASHBURTON**

Proposal: The proposal is to construct and operate a subsea pipeline, onshore gas treatment and compression plant, and sales gas pipeline. The subsea pipeline from the Macedon Gas Field (100 kilometres west of Onslow) connects to the onshore gas treatment and compression plant at Ashburton North (15 kilometres southwest of Onslow). The sales gas pipeline connects the onshore facility to the Dampier to Bunbury Natural Gas (DBNG) Pipeline.

The proposal is further documented in schedule 1 of this statement.

Proponent: BHP Billiton Petroleum Pty Ltd

Proponent Address: Central Park, 152-158 St Georges Terrace
PERTH WA 6000

Assessment Number: 1838

Appeal determinations: 72 and 73 of 2010

Report of the Environmental Protection Authority: Report 1360

The proposal referred to in the above report of the EPA may be implemented. The implementation of that proposal is subject to the following conditions and procedures:

1 Proposal Implementation

1-1 The proponent shall implement the proposal as documented and described in schedule 1 of this statement subject to the conditions and procedures of this statement.

2 Proponent Nomination and Contact Details

2-1 The proponent for the time being nominated by the Minister under sections 38(6) or 38(7) of the Act is responsible for the implementation of the proposal.

- 2-2 The proponent shall notify the CEO of any change of the name and address of the proponent for the serving of notices or other correspondence within 30 days of such change.

3 Time Limit of Authorisation

- 3-1 The authorisation to implement the proposal provided for in this statement shall lapse and be void five years after the date of this statement if the proposal to which this statement relates is not substantially commenced.
- 3-2 The proponent shall provide the CEO with written evidence which demonstrates that the proposal has substantially commenced on or before the expiration of five years from the date of this statement.

4 Compliance Reporting

- 4-1 The proponent shall prepare and maintain a compliance assessment plan to the satisfaction of the CEO.
- 4-2 The proponent shall submit to the CEO the compliance assessment plan required by condition 4-1 at least six months prior to the first compliance report required by condition 4-6, or prior to implementation, whichever is sooner.

The compliance assessment plan shall indicate:

- 1 the frequency of compliance reporting;
 - 2 the approach and timing of compliance assessments;
 - 3 the retention of compliance assessments;
 - 4 the method of reporting of potential non-compliances and corrective actions taken;
 - 5 the table of contents of compliance assessment reports; and
 - 6 public availability of compliance assessment reports.
- 4-3 The proponent shall assess compliance with conditions in accordance with the compliance assessment plan required by condition 4-1.
- 4-4 The proponent shall retain reports of all compliance assessments described in the compliance assessment plan required by condition 4-1 and shall make those reports available when requested by the CEO.
- 4-5 The proponent shall advise the CEO of any potential non-compliance within seven days of that non-compliance being known.
- 4-6 The proponent shall submit to the CEO the first compliance assessment report fifteen months from the date of issue of this Statement addressing the twelve month

period from the date of issue of this Statement and then annually from the date of submission of the first compliance assessment report.

The compliance assessment report shall:

- 1 be endorsed by the proponent's Managing Director or a person delegated to sign on the Managing Director's behalf;
- 2 include a statement as to whether the proponent has complied with the conditions;
- 3 identify all potential non-compliances and describe corrective and preventative actions taken;
- 4 be made publicly available in accordance with the approved compliance assessment plan; and
- 5 indicate any proposed changes to the compliance assessment plan required by condition 4-1.

5 Non-Indigenous Marine Species

- 5-1 Prior to mobilisation of vessels and submersible equipment for the construction of the Macedon Gas Project marine pipeline and umbilical, the proponent shall update the Introduced Marine Pest Management Procedure contained in Appendix Q of the Final EPS to be consistent with the Commonwealth and State guidelines approved and published at that time, to the satisfaction of the CEO on advice from the Department of Fisheries.
- 5-2 The proponent shall implement the updated Introduced Marine Pest Management Procedure for the construction and maintenance of the Macedon Gas Project marine pipeline and umbilical.

6 Marine Fauna

- 6-1 The proponent shall not cause physical damage to turtles, disrupt turtle nesting behaviour or cause a change to hatchling orientation in waters and/or beaches adjacent to the pipeline shore crossing during construction.
- 6-2 If the pipeline shore crossing is to take place between 1 November and 30 April the proponent shall prepare a marine turtle impacts management protocol to the satisfaction of the CEO on advice from the DEC prior to undertaking the shore crossing. The protocol shall include:
 1. employment of a suitably qualified marine fauna observer;
 2. indicators for determining if and when there is potential for impacts on turtle nesting or hatchling emergence;
 3. management responses to evidence of turtle activity; and

4. triggers for stopping construction activities pending further consultation with the DEC; and
 5. when resumption of activities can take place, on advice of the DEC.
- 6-3 The proponent shall implement the marine turtle impacts management protocol if undertaking the pipeline shore crossing between 1 November and 30 April.
- 6A Pipeline route – State waters**
- 6-1A Subject to complying with the separation distances in condition 7-1, the pipeline within State waters shall be laid/constructed within the corridor delineated by the coordinates specified in Schedule 2.
- 7 Benthic Primary Producer Habitat**
- 7-1 The proponent shall undertake all works in a manner that ensures that the loss of Benthic Primary Producer Habitat within the Local Assessment Area, as defined in Figure 3, does not exceed 1% for any habitat type and is minimised by maintaining the following separation distances during construction of the marine pipeline and umbilical :
- (1) pipeline to primary feature – 700 metres;
 - (2) pipeline to secondary feature – 600 metres;
 - (3) vessel movement/anchor to primary feature – 200 metres; and
 - (4) vessel movement/anchor to secondary feature – 100 metres.
- Note: “loss” is loss that does not recover within 5 years, “primary feature” and “secondary feature” are as defined in Figure 18 of the Final EPS and not a feature for which proposed impacts are described in section 8.4.4.5 of the Final EPS.
- 7-2 The proponent shall survey the direct loss of Benthic Primary Producer Habitat against the criteria in condition 7-1 starting within one month of completion of the marine pipeline and umbilical.
- 7-3 Notwithstanding condition 7-1, if monitoring detects that construction activities have contributed to a loss of greater than 1% in any habitat type within the management unit, as defined in Figure 3, the proponent shall notify the CEO of the strategies to be implemented to enhance recovery and rehabilitate the impacted Benthic Primary Producer Habitat.
- 8 Terrestrial Vegetation**
- 8-1 Within two months following completion of construction of the gas plant and associated pipelines, the proponent shall commence rehabilitation of the temporarily cleared areas of the site that are no longer being utilised to achieve re-establishment of vegetation, such that the following criteria are met across the distribution of the disturbance footprint within three years of commencement of rehabilitation:

- (1) Species diversity is not less than 60 percent of the known original species diversity;
- (2) Weed coverage is equal to or less than that of pre-cleared levels.

Note: The original species diversity and weed coverage must be determined prior to clearing or from analogue sites approved by the CEO on advice from the DEC.

- 8-2 In liaison with the DEC, the proponent shall monitor progressively the performance of rehabilitation for a range of sites against the criteria in condition 8-1 based on appropriately timed surveys after rain, until the completion criteria are met. The surveys shall be conducted annually unless otherwise agreed by the CEO.
- 8-3 The proponent shall include a rehabilitation monitoring report in the compliance assessment report referred to in condition 4-6 commencing from the date rehabilitation was commenced. The report shall address in the report the following:
1. The progress made towards meeting the criteria required by condition 8-1; and
 2. Contingency management measures in the event that the criteria required by condition 8-1 are unlikely to be met.

9 Terrestrial Fauna

- 9-1 The proponent shall prevent the death of fauna that becomes entrapped in the onshore pipeline trenches by employing a fauna clearing person or persons to remove trapped fauna from any open pipeline trench.
- 9-2 The length of open trenches shall not exceed a length capable of being inspected and cleared by a fauna clearing person within the time frame specified in condition 9-4.
- 9-3 Fauna refuges providing suitable shelter from the sun and predators for trapped fauna shall be placed in the trench at intervals not exceeding 50 metres.
- 9-4 Inspection and clearing of fauna from trenches by a fauna clearing person shall occur twice daily and not more than half an hour prior to the backfilling of trenches, with the first daily inspection and clearing to be undertaken no later than 3.5 hours after sunrise, and the second inspection and clearing to be undertaken daily between the hours of 3:00 pm and 6:00 pm.
- 9-5 In the event of rainfall, the proponent shall, following the clearing of fauna from the trench, pump out significant pooled water in the open trench (with the exception of groundwater) and discharge it to adjacent vegetated areas in a manner that does not cause erosion.

10 Emissions to Air

- 10-1 The proponent shall install equipment and manage ongoing operations such that best practice for a petroleum gas/condensate facility in respect to volatile organic compounds and oxides of nitrogen emissions is achieved.
- 10-2 The proponent shall provide reports showing the basis on which 'best practice' was determined, to the satisfaction of the CEO, as follows:
1. for plant and equipment – prior to applying for a Works Approval under Part V of the Act; and
 2. for ongoing management of operations – prior to applying for a Licence under Part V of the Act.

11 Greenhouse Gas Abatement

- 11-1 For the life of the project, the proponent shall include in the compliance assessment reports referred to in Condition 4-6 the following:
1. annual greenhouse gas emissions and intensity resulting from the operation of the project in comparison to the annual emissions predicted in the Final EPS and reasons for any variance;
 2. details of improvements in equipment, technology or procedures investigated by the proponent that would reduce greenhouse gas emissions; and
 3. details of improvements in equipment, technology or procedures implemented by the proponent that will reduce greenhouse gas emissions.

12 Decommissioning

- 12-1 At least six months prior to the anticipated date of closure, the proponent shall submit a Final Decommissioning Plan designed to ensure that the site is suitable for future land uses, for approval of the CEO. The Final Decommissioning Plan shall set out procedures and measures for:
1. removal or, if appropriate, retention of plant and infrastructure; and
 2. remediation or rehabilitation of all disturbed areas to a standard suitable for the agreed new land use(s).
- 12-2 The proponent shall implement the Final Decommissioning Plan required by condition 12-1 from the date of closure until such time as the Minister determines, on advice of the CEO, that the proponent's decommissioning responsibilities have been fulfilled.
- 12-3 The proponent shall make the Final Decommissioning Plan required by condition 12-1 publicly available in a manner approved by the CEO.

13 Definitions

13-1 In these conditions:

“Act” means the *Environmental Protection Act 1986*;

“Best practice” has the same meaning as defined in Guidance Statement No. 55 *Implementing Best Practice in Proposals Submitted to the Environmental Impact Assessment Process*, EPA, December 2003;

“CEO” means the Chief Executive Officer of the Office of the EPA;

“DEC” means the Department of Environment and Conservation;

“EPA” means the Environmental Protection Authority;

“fauna clearing person” means a person who meets the requirements of the Department of Environment and Conservation to undertake fauna handling;

“Final EPS” means the *Final Macedon Gas Project Environmental Protection Statement*, BHP Billiton Petroleum, July 2010;

“Minister” means the Minister responsible for the administration of the Act;

“Significant pooled water” means pooled water that would prevent survival of fauna between fauna clearing events.

[Signed 28 October 2010]

Hon Donna Faragher JP MLC
MINISTER FOR ENVIRONMENT; YOUTH

Schedule 1

The Proposal (Assessment No. 1838)

The proposal is to construct a subsea pipeline, onshore gas treatment and compression plant, and sales gas pipeline. The subsea pipeline from the Macedon Gas Field (100 kilometres west of Onslow) connects to the onshore gas treatment and compression plant at Ashburton North (15 kilometres southwest of Onslow). The sales gas pipeline connects the onshore facility to the Dampier to Bunbury Natural Gas (DBNG) Pipeline.

The location of the various project components is shown in Figures 1, 2 and 3.

The main characteristics of the proposal are summarised in Table 1 below. A detailed description of the proposal is provided in Section 4 of the Final EPS.

Table 1: Summary of Key Proposal Characteristics

Element	Description
Offshore wet gas pipeline and umbilical	Subsea pipeline and umbilical avoiding all marine reserves, islands and named reef structures with a shore crossing at Urala.
Shore crossing	Urala Station adjacent to Griffin Gas Project shore crossing. Construction using coffer dam/ open trench method at shore and horizontal directional drilling through the sand dunes.
Onshore wet gas pipeline and umbilical	15 kilometre buried pipeline and umbilical, crossing the Ashburton River at the Griffin pipeline location.
Plant location	Ashburton North approximately 15 kilometres south east of Onslow on the Urala pastoral lease.
Production - gas - condensate	Single train, 200 million standard cubic feet per day. 250-3200 litres per day
Sales gas pipeline	67 kilometre 500mm diameter buried pipeline from the plant to Onslow Rd and then parallel to Onslow Rd to the Dampier Bunbury Natural Gas Pipeline
Condensate storage and transport	Bunded 80 cubic metre tank with approximately monthly transport by road tanker to Perth or Dampier.
Pressure relief and blowdown	Low pressure and high pressure ground-flares
Water of condensation	Small volume of WoC and up to 160 cubic metres

Element	Description
(WoC) and produced formation water (PFW)	per day of PFW toward the end of the well life.
Waste water disposal	Onsite evaporation pond
Power supply	Primary supply from gas turbine generators,. Standby supply from diesel powered generator.
Water supply	From deep groundwater aquifer (Birdrong formation) for construction and operations. Desalination for potable water supply.
Vegetation clearing	Total - up to 516 hectares <u>Indicative components</u> Wet gas pipeline - 60 hectares (15km x 30m) Access road - 120 hectares (13km x 80m) Plant site - 105 hectares Communications/utilities – 6 hectares (2km x 30m) Sales gas pipeline – 225 hectares (67km x typically 30m)



Figure 1 Location plan

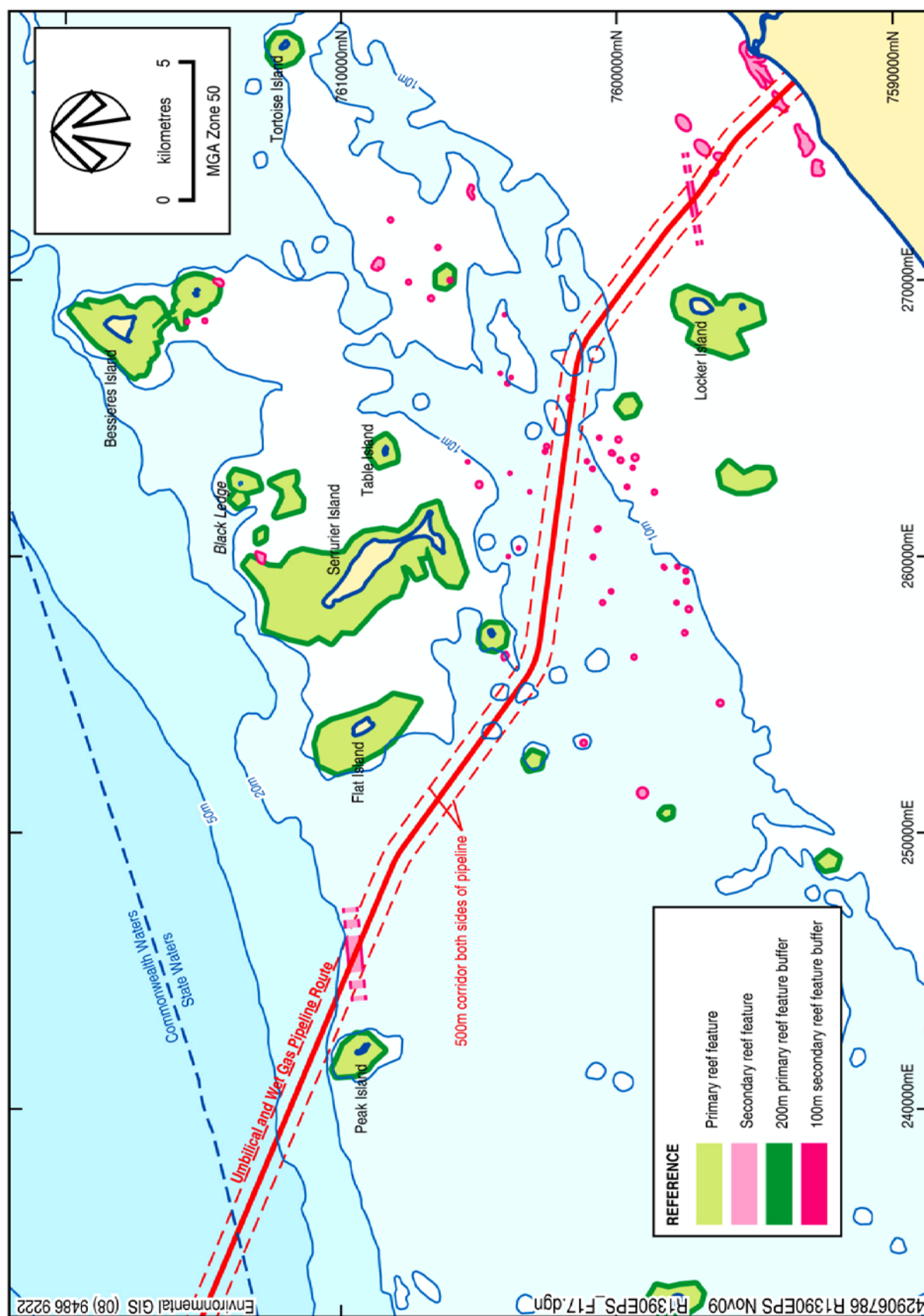


Figure 2 Offshore pipeline and umbilical route and shore crossing

Schedule 2

Coordinates for pipeline corridor, State waters

(Source: BHP Billiton Petroleum, October 2010; data form: GDA 94 MGA Zone 50)

Easting	Northing
234603.0485	7613609.199
236208.8723	7614014.966
249011.9542	7608591.313
249015.4748	7608589.806
249057.6524	7608571.556
249064.6585	7608568.461
249106.5515	7608549.567
249113.5093	7608546.365
249155.108	7608526.832
249162.016	7608523.523
249203.3106	7608503.355
249210.1671	7608499.941
249251.148	7608479.143
249257.9513	7608475.625
249298.6088	7608454.201
249305.3575	7608450.579
249345.6819	7608428.535
249352.3743	7608424.81
249392.3564	7608402.151
249398.991	7608398.323
249438.6213	7608375.055
249445.1964	7608371.126
249484.4656	7608347.253
249490.9798	7608343.224
249529.8787	7608318.752
249536.3304	7608314.624
249574.8499	7608289.56
249581.2376	7608285.333
249619.3686	7608259.681
249625.6909	7608255.357
249663.4244	7608229.124
249669.6797	7608224.704
249707.007	7608197.896
249710.109	7608195.65
255804.3234	7603747.729
255838.8603	7603722.948
255872.1304	7603699.883
255905.7696	7603677.359
255939.7691	7603655.383
255974.12	7603633.961

Easting	Northing
256008.8132	7603613.098
256043.8398	7603592.799
256079.1905	7603573.07
256114.856	7603553.916
256150.827	7603535.342
256187.094	7603517.354
256223.6476	7603499.954
256260.4781	7603483.149
256297.5759	7603466.943
256334.9313	7603451.339
256372.5345	7603436.342
256410.3755	7603421.956
256448.4446	7603408.185
256486.7316	7603395.032
256525.2267	7603382.501
256563.9196	7603370.595
256602.8002	7603359.316
256641.8583	7603348.669
256681.0838	7603338.656
256720.4662	7603329.279
256759.9953	7603320.541
256799.6607	7603312.445
256839.452	7603304.992
256879.3588	7603298.184
256921.3713	7603291.715
267026.3231	7601819.466
267030.2678	7601818.875
267077.5756	7601811.597
267085.4503	7601810.321
267132.6359	7601802.288
267140.4893	7601800.887
267187.5408	7601792.103
267195.3708	7601790.576
267242.2761	7601781.043
267250.0807	7601779.392
267296.828	7601769.111
267304.6053	7601767.335
267351.1826	7601756.31
267358.9306	7601754.411
267405.3261	7601742.644
267413.0428	7601740.621
267459.2447	7601728.115
267466.9281	7601725.97
267512.9245	7601712.728
267520.5728	7601710.46

Easting	Northing
267566.3521	7601696.487
267573.9632	7601694.097
267619.5138	7601679.396
267627.0857	7601676.885
267672.396	7601661.458
267679.9269	7601658.827
267724.9852	7601642.679
267732.4733	7601639.928
267777.2682	7601623.063
267784.7114	7601620.193
267829.2316	7601602.616
267836.628	7601599.627
267880.8622	7601581.342
267888.21	7601578.236
267932.1467	7601559.248
267939.444	7601556.024
267983.0722	7601536.337
267990.3172	7601532.998
268033.6258	7601512.618
268040.8166	7601509.163
268083.7945	7601488.094
268090.9292	7601484.526
268133.5655	7601462.774
268140.6424	7601459.092
268182.9262	7601436.663
268189.9435	7601432.868
268231.8641	7601409.767
268238.8199	7601405.861
268280.3666	7601382.094
268287.2592	7601378.078
268328.4214	7601353.651
268335.2491	7601349.525
268376.0164	7601324.445
268382.7774	7601320.211
268423.1393	7601294.483
268429.8319	7601290.141
268469.7782	7601263.773
268476.4007	7601259.325
268515.9212	7601232.323
268522.4719	7601227.77
268561.5566	7601200.141
268568.0338	7601195.484
268606.6727	7601167.234
268609.8832	7601164.867
272007.7617	7598638.788

Easting	Northing
272010.6563	7598636.62
272045.2965	7598610.476
272051.0382	7598606.077
272085.2966	7598579.435
272090.9741	7598574.953
272124.8435	7598547.819
272130.4556	7598543.255
272163.9289	7598515.633
272169.4744	7598510.99
272202.5447	7598482.886
272205.2921	7598480.534
273341.7425	7597500.53
273370.7705	7597475.863
273398.7542	7597452.774
273427.07	7597430.094
273455.712	7597407.827
273484.674	7597385.978
273513.9501	7597364.552
273543.534	7597343.552
273574.9138	7597321.956
275128.3492	7596269.382
275131.5487	7596267.196
275169.8405	7596240.815
275176.1882	7596236.369
275214.0665	7596209.397
275220.3446	7596204.853
275257.8003	7596177.298
275264.0071	7596172.657
275301.0313	7596144.525
275307.1655	7596139.789
275343.7491	7596111.086
275349.8092	7596106.255
275385.9436	7596076.988
275391.928	7596072.064
275427.6044	7596042.241
275433.5118	7596037.225
275468.7217	7596006.852
275474.5506	7596001.745
275509.2856	7595970.83
275515.0346	7595965.633
275549.2862	7595934.184
275554.954	7595928.898
275588.7141	7595896.922
275594.2993	7595891.549
275627.5597	7595859.054

Easting	Northing
275633.0609	7595853.595
275665.8136	7595820.588
275668.5324	7595817.826
277536.758	7593905.069
276821.482	7593206.227
274954.61	7595117.599
274925.9515	7595146.48
274898.2347	7595173.56
274870.1015	7595200.206
274841.5586	7595226.414
274812.613	7595252.176
274783.2716	7595277.486
274753.5414	7595302.338
274723.4296	7595326.727
274692.9434	7595350.646
274662.0901	7595374.089
274630.8772	7595397.052
274599.3121	7595419.528
274565.8068	7595442.611
273012.4738	7596495.116
273009.4777	7596497.162
272973.6149	7596521.843
272967.6678	7596526
272932.1669	7596551.199
272926.2808	7596555.442
272891.1493	7596581.154
272885.3253	7596585.482
272850.5707	7596611.7
272844.8101	7596616.112
272810.4396	7596642.833
272804.7436	7596647.327
272770.7645	7596674.544
272765.1344	7596679.121
272731.5537	7596706.827
272725.9906	7596711.486
272692.8156	7596739.677
272690.0595	7596742.036
271553.6048	7597722.044
271524.6684	7597746.635
271496.7741	7597769.653
271468.5497	7597792.265
271440.0012	7597814.467
271409.6911	7597837.342
268014.8644	7600361.153
267981.0554	7600385.871

Easting	Northing
267948.485	7600408.896
267915.5514	7600431.398
267882.263	7600453.371
267848.6283	7600474.811
267814.6558	7600495.711
267780.3542	7600516.067
267745.7321	7600535.873
267710.7985	7600555.123
267675.5622	7600573.814
267640.0322	7600591.941
267604.2175	7600609.498
267568.1273	7600626.482
267531.7707	7600642.888
267495.1569	7600658.712
267458.2954	7600673.949
267421.1955	7600688.597
267383.8666	7600702.65
267346.3182	7600716.107
267308.5599	7600728.962
267270.6013	7600741.214
267232.4521	7600752.858
267194.122	7600763.892
267155.6207	7600774.314
267116.958	7600784.119
267078.1438	7600793.307
267039.188	7600801.874
267000.1005	7600809.819
266960.8911	7600817.139
266921.57	7600823.832
266880.1759	7600830.201
256775.1946	7602302.454
256771.1909	7602303.054
256723.1764	7602310.447
256715.1843	7602311.744
256667.2958	7602319.914
256659.3257	7602321.34
256611.5758	7602330.284
256603.6298	7602331.839
256556.031	7602341.555
256548.1112	7602343.238
256500.676	7602353.724
256492.7845	7602355.535
256445.5253	7602366.787
256437.6642	7602368.727
256390.5934	7602380.742

Easting	Northing
256382.7647	7602382.809
256335.8946	7602395.585
256328.1004	7602397.778
256281.4434	7602411.312
256273.6857	7602413.63
256227.2539	7602427.918
256219.5348	7602430.362
256173.3405	7602445.399
256165.662	7602447.968
256119.7172	7602463.752
256112.0813	7602466.444
256066.3982	7602482.97
256058.8068	7602485.785
256013.3973	7602503.049
256005.8525	7602505.987
255960.7285	7602523.983
255953.2323	7602527.043
255908.4056	7602545.768
255900.9599	7602548.949
255856.4423	7602568.397
255849.0491	7602571.698
255804.8522	7602591.865
255797.5135	7602595.285
255753.649	7602616.164
255746.3666	7602619.703
255702.8459	7602641.29
255695.6218	7602644.947
255652.4563	7602667.235
255645.2924	7602671.008
255602.4935	7602693.993
255595.3916	7602697.882
255552.9705	7602721.556
255545.9325	7602725.559
255503.9004	7602749.918
255496.9281	7602754.034
255455.2959	7602779.07
255448.3912	7602783.299
255407.1699	7602809.006
255400.3346	7602813.346
255359.5349	7602839.717
255352.7708	7602844.167
255312.4035	7602871.196
255305.7123	7602875.755
255265.7879	7602903.433
255259.1715	7602908.1

Easting	Northing
255219.7006	7602936.421
255216.4209	7602938.794
249122.1182	7607386.78
249089.4569	7607410.237
249058.0125	7607432.098
249026.2368	7607453.474
248994.1374	7607474.362
248961.7219	7607494.755
248928.9977	7607514.649
248895.9727	7607534.039
248862.6545	7607552.921
248829.051	7607571.291
248795.17	7607589.144
248761.0195	7607606.476
248726.6075	7607623.282
248691.9421	7607639.56
248657.0315	7607655.304
248620.1262	7607671.272
234603.0485	7613609.199

END

Attachment 1 to Ministerial Statement 844

Change to Proposal

Proposal: Macedon Gas Development Shire of Ashburton

Proponent: BHP Billiton Petroleum

Change: Offshore Pipeline realignment and change to water supply

Key Characteristics Table:

<u>Element</u>	<u>Description of proposal</u>	<u>Description of approved change to proposal</u>
Offshore wet gas pipeline and umbilical	Subsea pipeline and umbilical avoiding all marine reserves, islands and named reef structures with a shore crossing at Urala.	Subsea pipeline and umbilical avoiding all marine reserves, islands and named reef structures with a shore crossing at Urala.
Shore crossing	Urala Station adjacent to Griffin Gas Project shore crossing. Construction using coffer dam/ open trench method at shore and horizontal directional drilling through the sand dunes.	Urala Station adjacent to Griffin Gas Project shore crossing. Construction using coffer dam/ open trench method at shore and horizontal directional drilling through the sand dunes.
Onshore wet gas pipeline and umbilical	15 kilometre buried pipeline and umbilical, crossing the Ashburton River at the Griffin pipeline location.	15 kilometre buried pipeline and umbilical, crossing the Ashburton River at the Griffin pipeline location.
Plant location	Ashburton North approximately 15 kilometres south east of Onslow on the Urala pastoral lease.	Ashburton North approximately 15 kilometres south west of Onslow on the Urala pastoral lease.
Production - gas - condensate	Single train, 200 million standard cubic feet per day. 250-3200 litres per day.	Single train, 200 million standard cubic feet per day. 250-3200 litres per day.
Sales gas pipeline	67 kilometre 500mm diameter buried pipeline from the plant to Onslow Rd and then parallel to Onslow Rd to the Dampier Bunbury Natural Gas Pipeline	67 kilometre 500mm diameter buried pipeline from the plant to Onslow Rd and then parallel to Onslow Rd to the Dampier Bunbury Natural Gas Pipeline
Condensate storage and transport	Bunded 80 cubic metre tank with approximately monthly transport by road tanker to Perth or Dampier.	Bunded 80 cubic metre tank with approximately monthly transport by road tanker to Perth or Dampier.
Pressure relief and blowdown	Low pressure and high pressure ground-flares	Low pressure and high pressure ground-flares

Water of condensation (WoC) and produced formation water (PFW)	Small volume of WoC and up to 160 cubic metres per day of PFW toward the end of the well life.	Small volume of WoC and up to 160 cubic metres per day of PFW toward the end of the well life.
Waste water disposal	Onsite evaporation pond	Onsite evaporation pond
Power supply	Primary supply from gas turbine generators. Standby supply from diesel powered generator.	Primary supply from gas turbine generators. Standby supply from diesel powered generator.
Water supply	From deep groundwater aquifer (Birdrong formation) for construction and operations. Desalination for potable water supply.	From deep groundwater aquifer (Birdrong formation) and the Ashburton River for construction and operations. Desalination for potable water supply.
Vegetation clearing	Total - up to 516 hectares Indicative components Wet gas pipeline - 60 hectares (15km x 30m) Access road - 120 hectares (13km x 80m) Plant site - 105 hectares Communications/utilities – 6 hectares (2km x 30m) Sales gas pipeline – 225 hectares (67km x typically 30m)	Total - up to 516 hectares Indicative components Wet gas pipeline - 60 hectares (15km x 30m) Access road - 120 hectares (13km x 80m) Plant site - 105 hectares Communications/utilities – 6 hectares (2km x 30m) Sales gas pipeline – 225 hectares (67km x typically 30m)

Note: Text in bold in the Key Characteristics Table, indicates change/s to the proposal.

List of Replacement Figures and Schedules:

- Figure 1: Location Plan
Figure 2: Offshore pipeline and umbilical route and shore crossing
Figure 3: BPPH local assessment areas and pipeline length
Schedule 2: Coordinates for pipeline corridor, State Waters

Dr Paul Vogel
CHAIRMAN
Environmental Protection Authority
under delegated authority

Approval date: 17 January 2012



Figure 1 **Location Plan**

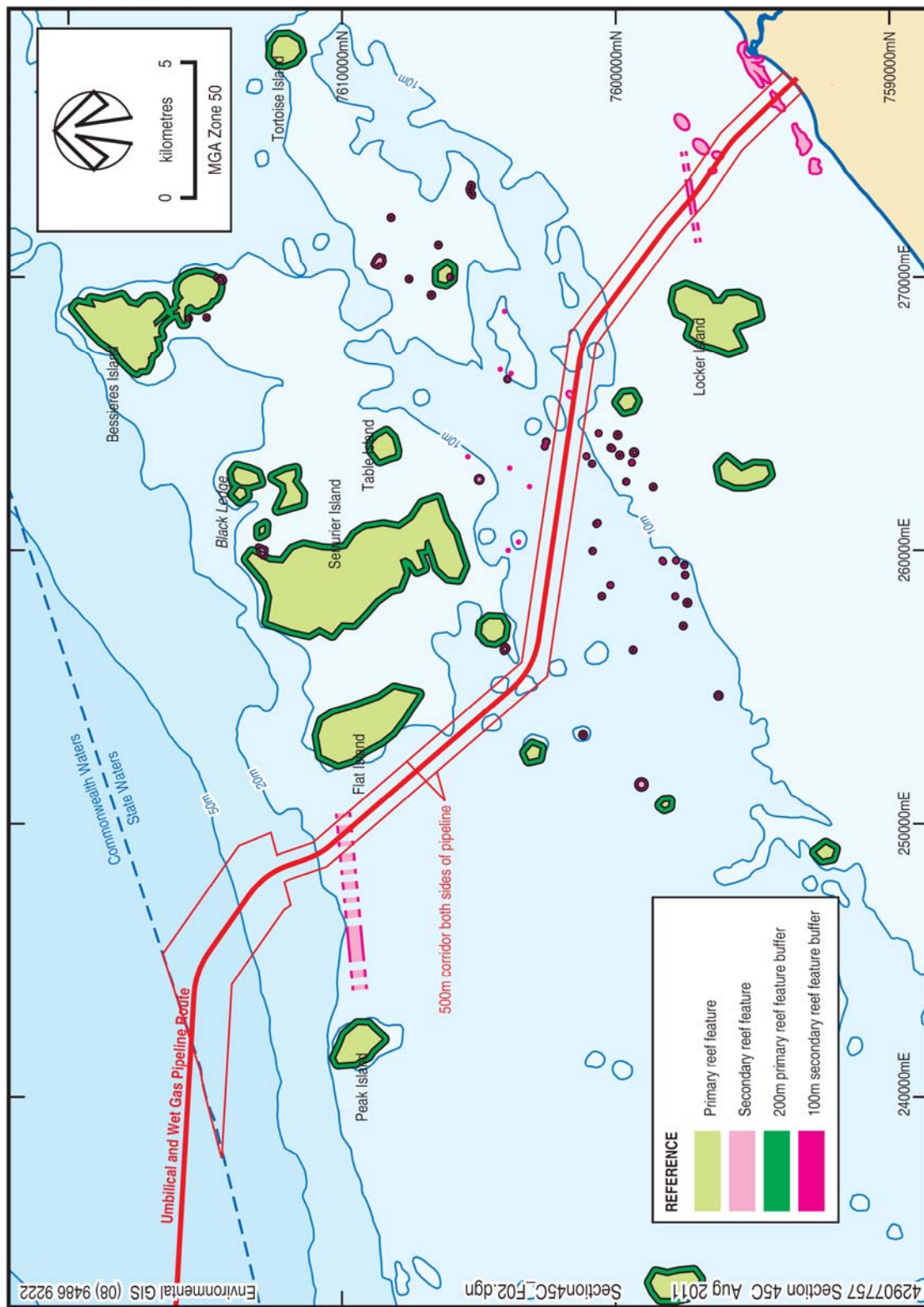


Figure 2 Offshore pipeline and umbilical route and shore crossing

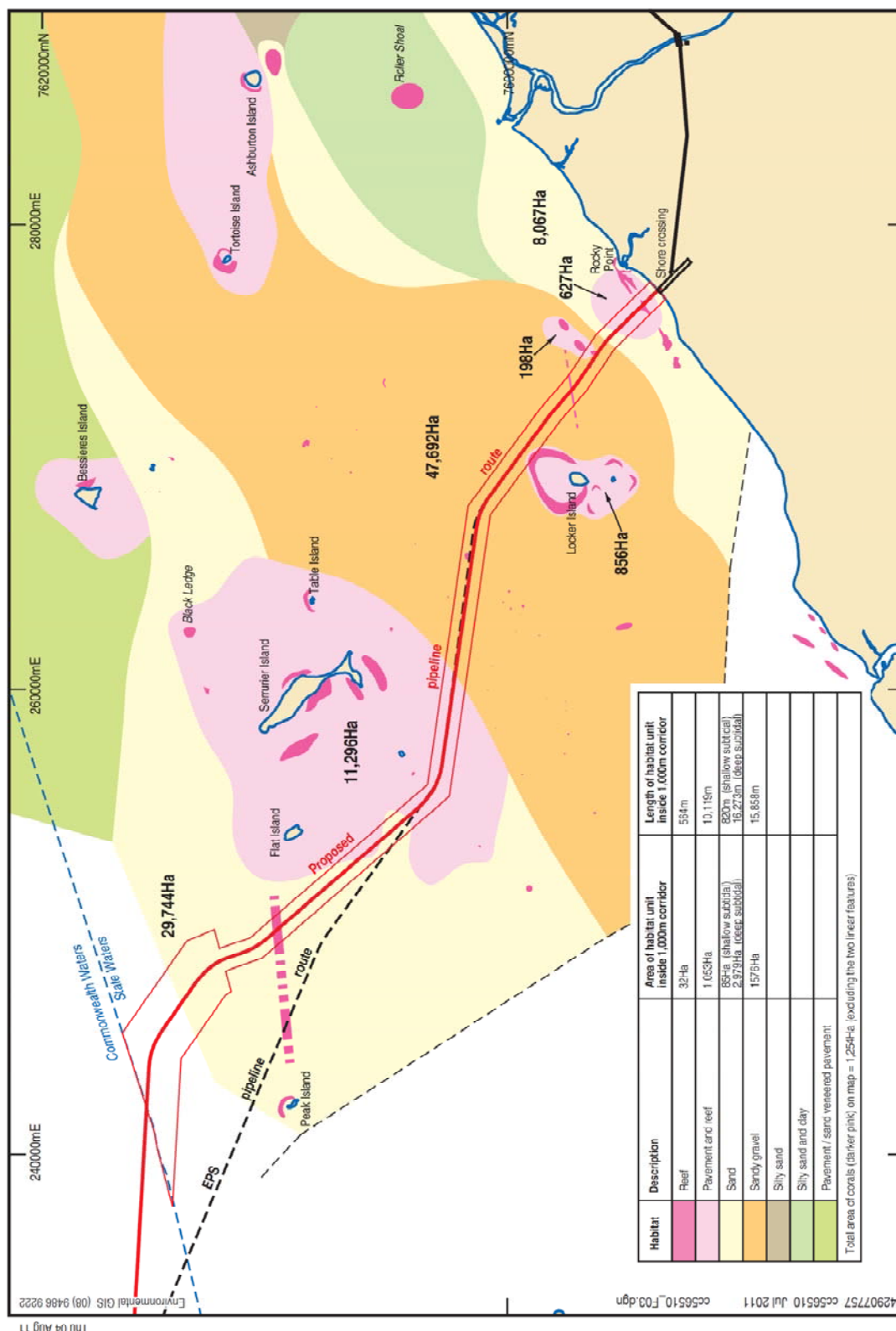


Figure 3 BPPH local assessment areas and pipeline lengths

Schedule 2

Coordinates for pipeline corridor, State Waters

(Source: BHP Billiton Petroleum, August 2011; data form: GDA 94 MGA Zone 50)

Easting	Northing
256683.42	7602315.82
255391.98	7602503.98
254539.01	7603491.75
248869.43	7610057.02
248425.08	7610571.58
248205.67	7611215.07
248021.69	7611754.65
247958.34	7611940.46
247866.75	7612114.11
247015.57	7611881.97
246846.96	7612127.47
246603.17	7612298.53
244510.90	7613766.57
244126.86	7614036.03
243658.51	7614063.13
237752.88	7614396.18
240291.16	7615060.97
240935.29	7615168.33
245229.22	7616552.20
246061.69	7615976.78
248153.96	7614508.74
249192.34	7613780.16
249676.35	7612607.64
248848.23	7612381.79
248915.33	7612232.39
248968.19	7612077.37
249152.17	7611537.79
249308.89	7611078.15
249626.28	7610710.62
255295.86	7604145.34
255905.13	7603439.78
256827.60	7603305.37
267026.29	7601819.47
267900.72	7601692.08
268609.89	7601164.86
272007.76	7598638.78
272109.39	7598563.23

Easting	Northing
272205.29	7598480.53
273343.12	7597499.34
273453.14	7597404.47
273573.40	7597322.98
274997.15	7596358.28
275290.06	7596159.81
275537.33	7595906.73
277534.72	7593862.38
276795.23	7593188.32
274822.05	7595207.88
274645.44	7595388.65
274436.22	7595530.42
273012.46	7596495.12
272844.09	7596609.21
272690.06	7596742.03
271552.24	7597723.22
271483.74	7597782.29
271411.14	7597836.26
268013.27	7600362.34
267506.72	7600738.92
266882.11	7600829.92