



MINISTER FOR THE ENVIRONMENT;
LABOUR RELATIONS

Statement No.

000535

STATEMENT THAT A PROPOSAL MAY BE IMPLEMENTED
(PURSUANT TO THE PROVISIONS OF THE
ENVIRONMENTAL PROTECTION ACT 1986)

UPGRADE OF MARINE SERVICES FACILITY, KING BAY, DAMPIER

Proposal: Upgrading of existing facilities to service marine vessels and provide a protected anchorage to allow safe berthing, cargo handling, maintenance and shelter from extreme weather events, as documented in schedule 1 of this statement.

Proponent: Mermaid Marine Australia Pty Ltd

Proponent Address: Eagle Jetty
20 Mews Road
FREMANTLE WA 6160

Assessment Number: 1303

Report of the Environmental Protection Authority: Bulletin 964

The proposal to which the above report of the Environmental Protection Authority relates may be implemented subject to the following conditions and procedures:

Procedures

1 Implementation

- 1-1 Subject to these conditions and procedures, the proponent shall implement the proposal as documented in schedule 1 of this statement.
- 1-2 Where the proponent seeks to change any aspect of the proposal as documented in schedule 1 of this statement in any way that the Minister for the Environment determines, on advice of the Environmental Protection Authority, is substantial, the proponent shall refer the matter to the Environmental Protection Authority.
- 1-3 Where the proponent seeks to change any aspect of the proposal as documented in schedule 1 of this statement in any way that the Minister for the Environment determines, on advice of the Environmental Protection Authority, is not substantial, those changes may be effected.

2 Proponent Commitments

- 2-1 The proponent shall implement the consolidated environmental management commitments documented in schedule 2 of this statement.

Published on

24 JAN 2000

- 2-2 The proponent shall implement subsequent environmental management commitments which the proponent makes as part of the fulfilment of conditions and procedures in this statement.

3 Proponent

- 3-1 The proponent for the time being nominated by the Minister for the Environment under section 38(6) or (7) of the Environmental Protection Act 1986 is responsible for the implementation of the proposal until such time as the Minister for the Environment has exercised the Minister's power under section 38(7) of the Act to revoke the nomination of that proponent and nominate another person in respect of the proposal.
- 3-2 Any request for the exercise of that power of the Minister referred to in condition 3-1 shall be accompanied by a copy of this statement endorsed with an undertaking by the proposed replacement proponent to carry out the proposal in accordance with the conditions and procedures set out in the statement.
- 3-3 The proponent shall notify the Department of Environmental Protection of any change of proponent contact name and address within 30 days of such change.

4 Commencement

- 4-1 The proponent shall provide evidence to the Minister for the Environment within five years of the date of this statement that the proposal has been substantially commenced.
- 4-2 Where the proposal has not been substantially commenced within five years of the date of this statement, the approval to implement the proposal as granted in this statement shall lapse and be void. The Minister for the Environment will determine any question as to whether the proposal has been substantially commenced.
- 4-3 The proponent shall make application to the Minister for the Environment for any extension of approval for the substantial commencement of the proposal beyond five years from the date of this statement at least six months prior to the expiration of the five year period referred to in conditions 4-1 and 4-2.
- 4-4 Where the proponent demonstrates to the requirements of the Minister for the Environment on advice of the Environmental Protection Authority that the environmental parameters of the proposal have not changed significantly, then the Minister may grant an extension not exceeding five years for the substantial commencement of the proposal.

5 Compliance Auditing

- 5-1 The proponent shall submit periodic Compliance Reports, in accordance with an audit program prepared in consultation between the proponent and the Department of Environmental Protection.
- 5-2 Unless otherwise specified, the Chief Executive Officer of the Department of Environmental Protection is responsible for assessing compliance with the conditions, procedures and commitments contained in this statement and for issuing formal written advice that the requirements have been met.
- 5-3 Where compliance with any condition, procedure or commitment is in dispute, the matter will be determined by the Minister for the Environment.

Environmental conditions

6 Environmental Management System

- 6-1 In order to manage the environmental impacts of the project, and to fulfil the requirements of the conditions and procedures in this statement, prior to construction, the proponent shall demonstrate to the requirements of the Environmental Protection Authority on advice of the Department of Environmental Protection that there is in place an environmental management system which includes the following elements:
- 1 An environmental policy and corporate commitment to it;
 - 2 Mechanisms and processes to ensure:
 - (1) planning to meet environmental requirements;
 - (2) implementation and operation of actions to meet environmental requirements, including environmental reporting;
 - (3) measurement and evaluation of environmental performance and reporting; and
 - 3 Review and improvement of environmental outcomes.
- 6-2 The proponent shall implement the environmental management system referred to in condition 6-1.

7 Performance Review

- 7-1 For the six years following the commencement of construction, the proponent shall submit triennial Performance Reviews to the Department of Environmental Protection:
- to document the outcomes, beneficial or otherwise;
 - to review the success of goals, objectives and targets; and
 - to evaluate the environmental performance over each three year period;
- relevant to the following:
- 1 environmental objectives reported on in Environmental Protection Authority Bulletin 964;
 - 2 proponent's consolidated environmental management commitments documented in schedule 2 of this statement and those arising from the fulfilment of conditions and procedures in this statement;
 - 3 environmental management system environmental performance targets;
 - 4 environmental management programs and plans; and/or
 - 5 environmental performance indicators;
- to the requirements of the Environmental Protection Authority on advice of the Department of Environmental Protection.

Note 1: Following the end of this six year period, a revised timing for Performance Review is to be negotiated between the Environmental Protection Authority and the proponent.

Note 2: The Environmental Protection Authority may recommend changes and actions to the Minister for the Environment following consideration of the Performance Review.

8 Decommissioning Plan

- 8-1 At least six months prior to decommissioning, the proponent shall prepare a Decommissioning Plan to ensure the site is left in a suitable condition to the requirements of the Environmental Protection Authority on advice of the Department of Environmental Protection.

This Plan shall address:

- 1 removal or, if appropriate, retention of plant and infrastructure;
 - 2 (final) rehabilitation of all disturbed areas to a standard suitable for agreed new land use(s); and
 - 3 identification of contaminated areas, including provision of evidence of notification to relevant statutory authorities.
- 8-2 The proponent shall implement the Decommissioning Plan required by condition 8-1 until such time as the Minister for the Environment determines that decommissioning is complete.
- 8-3 The proponent shall make the Decommissioning Plan required by condition 8-1 publicly available, to the requirements of the Environmental Protection Authority.

Note

- 1 The proponent is required to apply for a Works Approval and Licence for this project under the provisions of Part V of the Environmental Protection Act.

CHERYL EDWARDES (Mrs) MLA
MINISTER FOR THE ENVIRONMENT

24 JAN 2000

Schedule 1

The Proposal

The marine facilities are located on the northern shore of King Bay in Dampier, on the current Mermaid Marine Australia lease, incorporating vacant lease land to the east of the site and extending into King Bay (Figure 1). The facility will provide protected anchorage to allow safe berthing, cargo handling, maintenance and shelter from extreme weather events. A plan of the layout of the facilities and the surrounding environment is included in Figure 2. The proposal includes:

- slipway for vessels up to 80 metres;
- 300 metres long quay wall;
- laydown and storage areas;
- 240 metres long breakwater;
- 12 cyclone moorings;
- 8 boat pens; and
- dredging.

The key characteristics of the proposal are summarised in the table below.

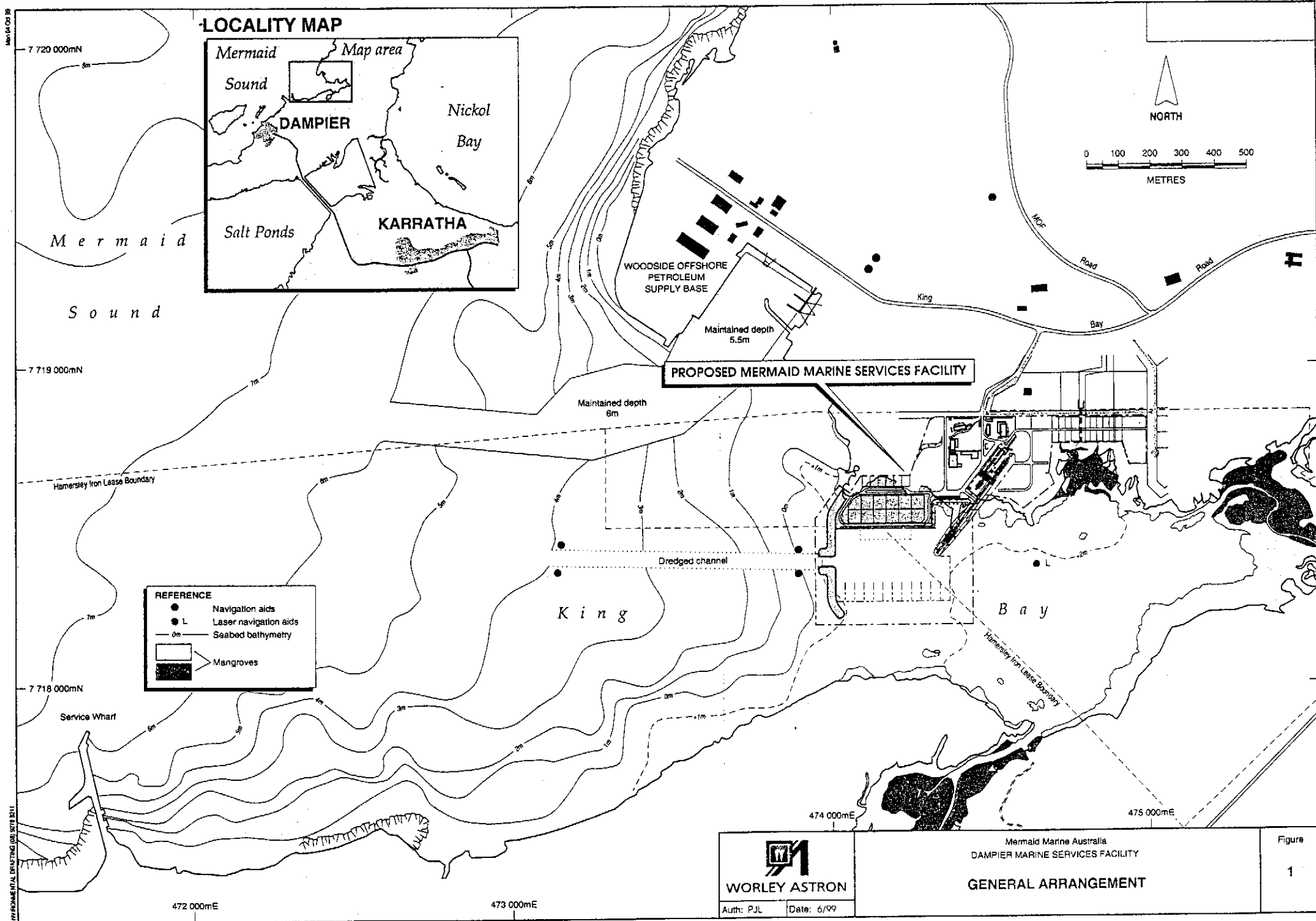
Key Characteristics Table

Element	Quantities/Description
Slipway	To service vessels up to 80 metres and 4000 tonne displacement
Quay wall	300 metres steel sheet pile
Breakwater	240 metres long rock armour
Cyclone moorings	12 spread mooring positions
Boat pens	8 pens with pylon supported access catwalk
Dredging	Approach channel, and mooring basin, approximately 600 000 cubic metres.
Workshop / offices	Incorporating current facilities.
Vessel access towers	As required.

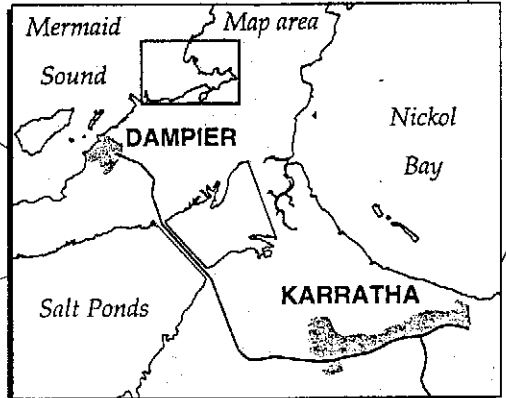
Figures (attached)

Figure 1 Location of proposal

Figure 2 Plan of layout of the facilities



LOCALITY MAP



REFERENCE

- Navigation aids
- L Laser navigation aids
- 0m Seabed bathymetry
- Mangroves

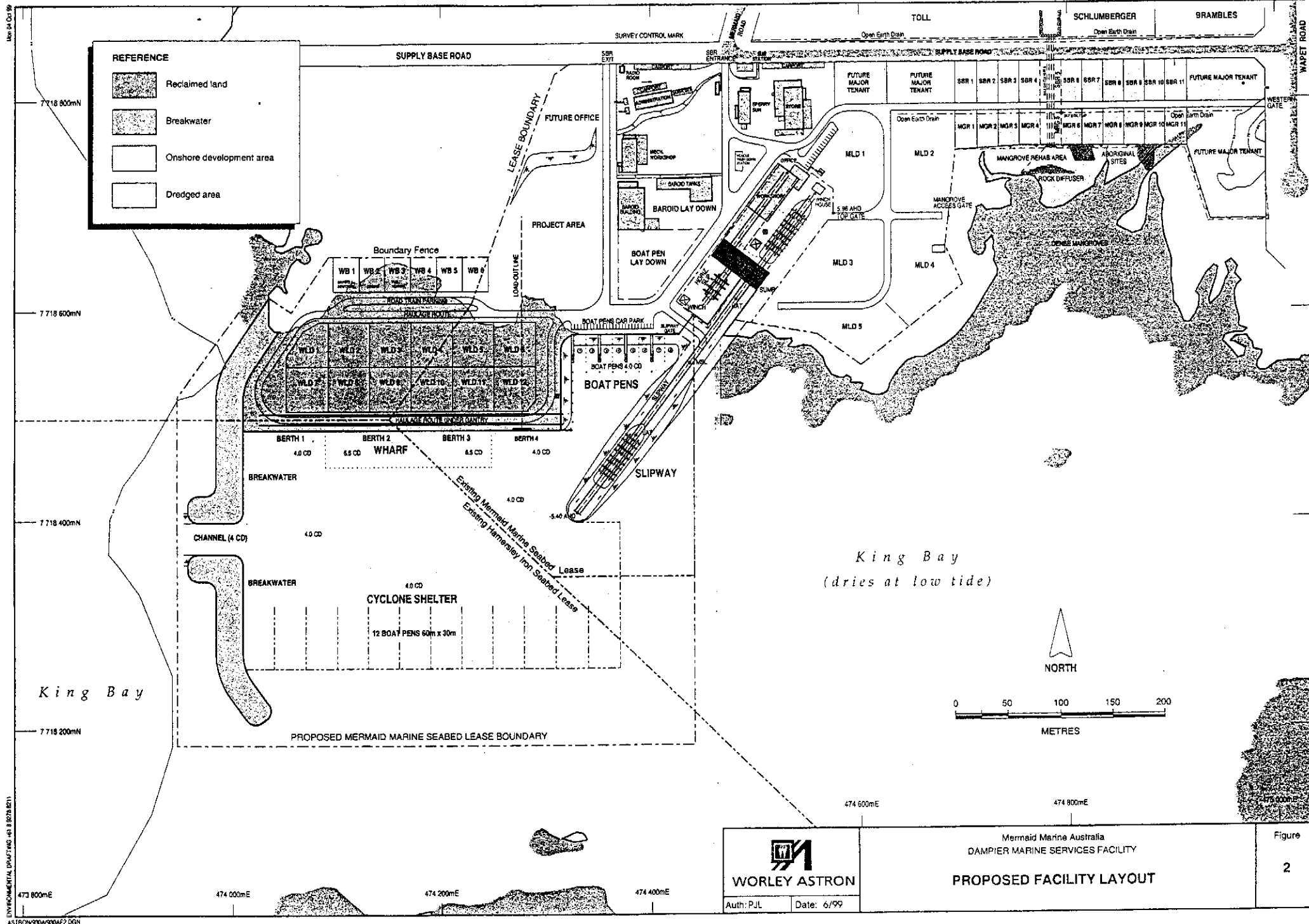
WORLEY ASTRON

Auth: P.J.L. Date: 6/99

Mermaid Marine Australia
DAMPIER MARINE SERVICES FACILITY

GENERAL ARRANGEMENT

Figure
1



Schedule 2

**Proponent's Consolidated Environmental Management
Commitments**

December 1999

**Upgrade of Marine Services Facility, King Bay, Dampier
(1303)**

Mermaid Marine Australia Pty Ltd

Proponent's Consolidated Environmental Management Commitments (Mermaid Marine Australia, Pty Ltd)

No.	Topic	Commitment/Action	Objective/s	Timing	Advising Agency	Measurement/ compliance criteria
1.	Vegetation	Develop and implement mangrove monitoring plan. Plan to include a program to extend over a six year period, including baseline monitoring.	Maintain abundance and diversity of undisturbed mangrove population	Pre-construction phase and ongoing for six years, including construction and post-construction phases	CALM	Submission of monitoring programme to satisfaction of DEP. Subject to re-evaluation after six year period
2.	Vegetation	Report results of mangrove monitoring program.	Maintain abundance and diversity of undisturbed mangrove population	Annual reporting for unexpected or negative impacts. Otherwise triennial reports.		Submission of monitoring reports to DEP
3.	Vegetation	Develop and implement mangrove revegetation plan detailing a program for a minimum of six years	Rehabilitate 500 m ² of degraded mangroves	Pre-construction	Murdoch University CALM	Submission of revegetation plan to satisfaction of DEP.
4.	Vegetation	Report results of mangrove rehabilitation programme	Rehabilitate 500 m ² of degraded mangroves	Annual reporting for unexpected or negative impacts. Otherwise triennial reports.		Submission of monitoring reports to DEP
5.	Vegetation	Develop and implement landscaping plan.	Maintain or increase abundance of priority plant species	Pre-construction, construction and operational phases	CALM	Submission of landscaping program to DEP
6.	Vegetation	Develop and implement weed control plan. Plan to include provision for post construction monitoring as appropriate.	Prevent spread of weeds from site	Pre-construction, construction and operational phase as required.	CALM Agriculture WA	Submission of weed control program to satisfaction of DEP
7.	Water and sediment quality	Develop and implement water and sediment quality monitoring programme in King Bay. Program to include provisions for revaluation and modification as seen appropriate by proponent and/or DEP.	Maintain pre-construction water quality in accordance with draft Australian water quality guidelines (ANZECC and ARMCANZ 1999)	Pre-construction, construction and operational phases		Submission of water and sediment quality monitoring program to satisfaction of DEP
8.	Water and sediment quality	Report results of water and sediment quality monitoring	Maintain pre-construction water quality	Annually		Submission of water and sediment quality monitoring reports to DEP for review.
9.	Water quality	Develop a dredging and breakwater construction plan. Implement the above plan, ensuring dredging and breakwater construction methods will use the best practically available techniques to minimise turbidity.	Maintain pre-construction water quality	Pre-construction Construction phase	Port and Harbour Consultants	Submission of dredging and breakwater construction plan to satisfaction of DEP.

Proponent's Consolidated Environmental Management Commitments (Mermaid Marine Australia, Pty Ltd)

No.	Topic	Commitment/Action	Objective/s	Timing	Advising Agency	Measurement/ compliance criteria
10.	Water quality	Develop and implement a program to monitor and report long term erosion around dredged basin	Confirm predictions of digital modelling. Determine remedial action if necessary. Ensure stability of dredged basin with reference to <i>Shore Protection Manual, US Army Corps of Engineers</i>	Operational phase	Port and Harbour Consultants	Submission of monitoring program to reporting requirements of the DEP.
11.	Water quality	Develop site drainage plan	Maintain pre-construction water quality	Pre-construction		Submission of design documentation to satisfaction of DEP.
12.	Water quality	Establish and maintain a competent system of pollutant entrapment (eg. oil and sediment traps and sand filter system)	Maintain a competent system of pollutant entrapment to maintain pre-construction water quality	Pre-construction, construction and operational.		Submission of design documentation to satisfaction of DEP.
13.	Water quality	TBT-based antifouling paints will not be used on any Mermaid vessel	Maintain pre-construction water quality	Ongoing		Conformance with compliance and performance review requirements as specified by the DEP.
14.	Landfill	Monitor subsidence of fill	Prevent marine contamination Prevent degradation of facilities	Construction, ongoing	Port and Harbour Consultants	Reporting of negative impacts if occur.
15.	Waste management	Store solid wastes in closed top skips or bunded areas and dispose off-site in acceptable manner	Prevent soil and water contamination in accordance with relevant National Environmental Protection Measures and appropriate requirements of the Australian Water Quality Guidelines (<i>ANZECC and ARMCA NZ 1999</i>).	Construction and operational phases	Shire of Roebourne and Health Dept of WA	Submission of waste management plan to satisfaction of DEP, Shire of Roebourne and Health Department of WA.
16.	Waste management	Contaminated liquid waste removed from site by commercial service provider	Prevent soil and water contamination in accordance with requirements of Commitment 15.	Construction and operational phases	Shire of Roebourne and Health Dept of WA	Submission of waste management plan to satisfaction of DEP, Shire of Roebourne and Health Department of WA.
17.	Waste management	No wastes will be burnt on site	Maintain air quality	Construction and operational phases	Shire of Roebourne and Health Dept of WA	Submission of waste management plan to satisfaction of DEP, Shire of Roebourne and Health Department of WA.
18.	Waste management	On-site treatment of sewage wastes using appropriate aerated wastewater treatment facility. Re-use wastewater if possible	Prevent soil and water contamination in accordance with requirements of Commitment 15.	Construction and operational phases	Shire of Roebourne and Health Dept of WA	Submission of waste management plan to satisfaction of DEP, Shire of Roebourne and Health Department of WA.
19.	Dust management	Develop and implement dust monitoring program	Control and minimise dust generation in accordance with DEP guidelines	Pre-construction and operational phases		Submission of dust management plan to satisfaction of DEP
20.	Accidental pollution prevention	Possible contaminants on site (including oil, fuel and chemicals) will be stored and transferred in bunded areas	Minimise potential for pollution and meet requirements in accordance with the <i>Explosives and Dangerous Goods Act 1961</i> and <i>Dangerous Goods Regulations 1992</i> .	Construction, ongoing	DME	Submission of chemical and fuel storage management plan to satisfaction of DME and DEP.
21.	Accidental pollution prevention	All storage areas for liquids will be above the 100 year storm surge level	Minimise potential for pollution	Construction, ongoing	DME	Submission of chemical and fuel storage management plan to satisfaction of DME and DEP.

Proponent's Consolidated Environmental Management Commitments (Mermaid Marine Australia, Pty Ltd)

No.	Topic	Commitment/Action	Objective/s	Timing	Advising Agency	Measurement/ compliance criteria
22.	Accidental pollution prevention	Develop spill clean up procedures, including mechanism for implementation	Minimise potential for pollution	Pre-construction	DME	Submission of spill response strategy to satisfaction of DEP and DME.
23.	Fire	Proponent will ensure the site has an appropriate fire fighting system and that its staff are trained in its use	Ensure the safety of personnel, equipment and neighbouring facilities	Operational phase	local emergency services	Submission of emergency response strategy to relevant local authority and emergency services.

Abbreviations

CALM Department of Conservation and Land Management
 DEP Department of Environmental Protection
 DME Department of Minerals and Energy

Attachment 1 to Statement 535

Change to Proposal

Proposal: Upgrade of Marine Services Facility, King Bay, Dampier

Proponent: Mermaid Marine Australia Pty Ltd

Change: to facilities at the Mermaid Marine Supply Base, King Bay, as shown in Figure 2.

Features of previously approved Proposal as implemented:

Element	Quantities/Description
HLO Wharf and finger pier	The supply base currently has a 70m Finger Pier extending from the have load out (HLO) area.
Ramp	The ramp is currently 20m wide.
Barge Pocket	The existing barge pocket is sheet piled however they are not suitable for current operations and require strengthening/replacement.
Area A	Areas A, B and C areas and the Bone Yards are all currently lay down areas which have been cleared of vegetation and built up using fill however they are not sealed or hard stood.
Area B	
Area C	
Bone Yards	

Features of changed Proposal:

Element	Quantities/Description
Finger pier extending from the HLO Wharf	<p>The current Finger Pier extending from the HLO wharf is to be extended. The Finger Pier will be doubled to a width of 30 m (an extension of 30 m) and then extended another 70 m in an easterly direction (see Figure 3).</p> <p>The extension of the wharf will be constructed as the current finger pier using steel piles with a concrete deck.</p>
Barge Landing Ramp	Widening of the existing ramp to the west to a width of 60 m from original 20 m

	The ramp widening will allow docking of up to three Landing Craft at a time.
Barge Pocket	The existing sheet piles at the barge pockets will be removed and replaced with new sheet piling to facilitate a barge of 5400 dwt.
Area A	Area A which is 1.7 ha will be hard stood to a depth of 300 mm using cement stabilisation and sealed to be used as a Lay down area. This area also to be provided with a wash down area for trucks. A mud tank farm of approx 100m2 area will be constructed in the north east corner adjacent to Area A.
Area B	Area B which is 1.10 ha will be hard stood to a depth of 300 mm using cement stabilisation and sealed.
Area C	Area C which is 0.22 ha will be hard stood to a depth of 300 mm using cement stabilisation and used for barge loading and unloading operations.
Bone Yards	The bone yards which are 0.18 ha and 0.75 ha will be hard stood to a depth of 300 mm using cement stabilisation and used as a Lay down area.
Storage Shed along the slipway	A new storage shed to be constructed to provide undercover storage of 2250m2. It will be a steel structure constructed with a concrete slab floor. The shed will comprise five bays with access from the side by forklift. An apron along the shed will be installed to facilitate access by trucks to be loaded and unloaded.
Boat Shed and associated facilities	Boat Shed and associated facilities at the land side end of the slipway area to be constructed. It will be a steel structure constructed with a concrete slab floor.
General site improvements	Grading and sealing of existing roads; the construction of wash down pad

	(including drains, sumps and associated utilities), sealing of existing lay down areas and amending the drainage and construction of various buildings including amenities.
--	---

Figure 2. Overall Proposed Expansion

**Approved under delegation
from Minister for the Environment:**

Approval Date: 13.2.08

Attachment 2 to Statement 535

Change to Proposal

Proposal: Upgrade of Marine Services Facility, King Bay, Dampier.

Proponent: Mermaid Marine Australia Pty Ltd.

Change: Expansion of barge berth by 15 metres and minor changes to land-based facilities.

Key Characteristics Table:

Component	Description of approved proposal	Description of approved changes to proposal
HLO Wharf and Finger Pier	The current Finger Pier extending from the HLO wharf is to be extended. The Finger Pier will be doubled to a width of 30 m (an extension of 30 m) and then extended another 70 m in an easterly direction (see Figure 3).	Removed – Works Completed
Storage Shed along the slipway	A new storage shed to be constructed to provide undercover storage of 2250 m ² . It will be a steel structure constructed with a concrete slab floor. The shed will comprise five bays with access from the side by forklift. An apron along the shed will be installed to facilitate access by trucks to be loaded and unloaded.	Removed – Works Completed
Barge Landing Ramp	Widening of the existing ramp to the west to a width of 60 m from original 20 m.	Widening of the existing ramp to the west to a width of 60 metres from original 20 metres.
Barge Pocket	The existing sheet piles at the barge pockets will be removed and replaced with new sheet piling to facilitate a barge of 5400 dwt.	To expand the existing Barge Berth southward to a length of 65 metres from original 50 metres.
Area A	Area A which is 1.7 hectares (ha) will be hard stood to a depth of 300 millimetres (mm)	To undertake general upgrades and repairs of seawalls and other minor

	<p>using cement stabilisation and sealed to be used as a Lay down area. This area also to be provided with a wash down area for trucks.</p> <p>A mud tank farm of approx 100 m² area will be constructed in the north east corner adjacent to Area A.</p>	changes to facilities in Area A which is 1.7 hectares.
Area B	Area B which is 1.10 ha will be hard stood to a depth of 300 mm using cement stabilisation and sealed.	To undertake general upgrades and repairs of seawalls and other minor changes to facilities in Area B which is 1.82 hectares (includes former Area C, 0.22 hectares).
Area C	Area C which is 0.22 ha will be hard stood to a depth of 300 mm using cement stabilisation and used and used for barge loading and unloading operations.	To undertake general upgrades and repairs in Area C which is 2.92 hectares (includes former Bone Yard, 0.75 hectares).
Bone Yards	The bone yards which are 0.18 ha and 0.75 will be hard stood to a depth of 300 mm using cement stabilisation and used as a Lay down area.	To undertake general upgrades and repairs in Bone Yard, which is 0.18 hectares.
General site improvements	Grading and sealing of existing roads; the construction of wash down pad (including drains, sumps and associated utilities), sealing of existing lay down areas and amending the drainage and construction of various buildings including amenities.	To undertake general site improvements within approved project area.

Dr Paul Vogel
CHAIRMAN
Environmental Protection Authority
under delegated authority

Approval date: 24.4.09

Attachment 3 to Ministerial Statement 535

Change to Proposal under s45C of the *Environmental Protection Act 1986*

Proposal: Upgrade of Marine Services Facility, King Bay, Dampier.

Proponent: Mermaid Marine Australia Limited.

Revised Proposal Description

The marine facilities are located on the northern shore of King Bay in Dampier, on the current Mermaid Marine Australia lease and extending into King Bay. The facility provides protected anchorage to allow safe berthing, cargo handling, maintenance and shelter from extreme weather events. A plan of the facilities and surrounding environment is shown in Figure 1.

The proposal includes:

- slipway for vessels up to 80 metres;
- 300 metres long quay wall;
- Laydown and storage areas;
- 240 metres long breakwater;
- 12 cyclone moorings; and
- dredging.

Change: Extension of existing slipway groyne by 50 metres and deletion of a number of elements as they have been completed or are not environmentally significant.

Key Characteristics Table: This table replaces the Key Characteristics Table in Attachment 2

Element	Description of approved proposal	Description of approved changes to proposal
Barge Landing Ramp	Widening of the existing ramp to the west to a width of 60 m from original 20 m.	Removed – works Completed April 2009
Barge Pocket	To expand the existing Barge Berth southward to a length of 65 metres from original 50 metres.	Removed - works Completed January 2010
Area A	To undertake general upgrades and repairs of seawalls and other minor changes to facilities in Area A which is 1.7 hectares.	Removed - works Completed September 2009

Area B	To undertake general upgrades and repairs of seawalls and other minor changes to facilities in Area B which is 1.82 hectares (includes former Area C, 0.22 hectares).	Removed- works Completed August 2009
Area C	To undertake general upgrades and repairs in Area C which is 2.92 hectares (includes former Bone Yard, 0.75 hectares).	Removed - works Completed September 2009
Bone Yards	To undertake general upgrades and repairs in Bone Yard, which is 0.18 hectares.	Removed - works Completed April 2011
General site improvements	To undertake general site improvements within approved project area.	Removed as not environmentally significant
Slipway	Slipway for vessels up to 80 m and 4,000 tonne displacement	Extension of the 7 m wide rock groyne on the eastern side of the slipway by 50 m.

Note: Text in **bold** in the Key Characteristics Table, indicates change/s to the proposal.

List of Replacement Figures and Schedules:

Figure 1 Facility Layout and proposed groyne extension
Replaces Figures 1 and 2 in Schedule 1

Dr Paul Vogel
CHAIRMAN
Environmental Protection Authority
under delegated authority

Approval date: 26 February 2013

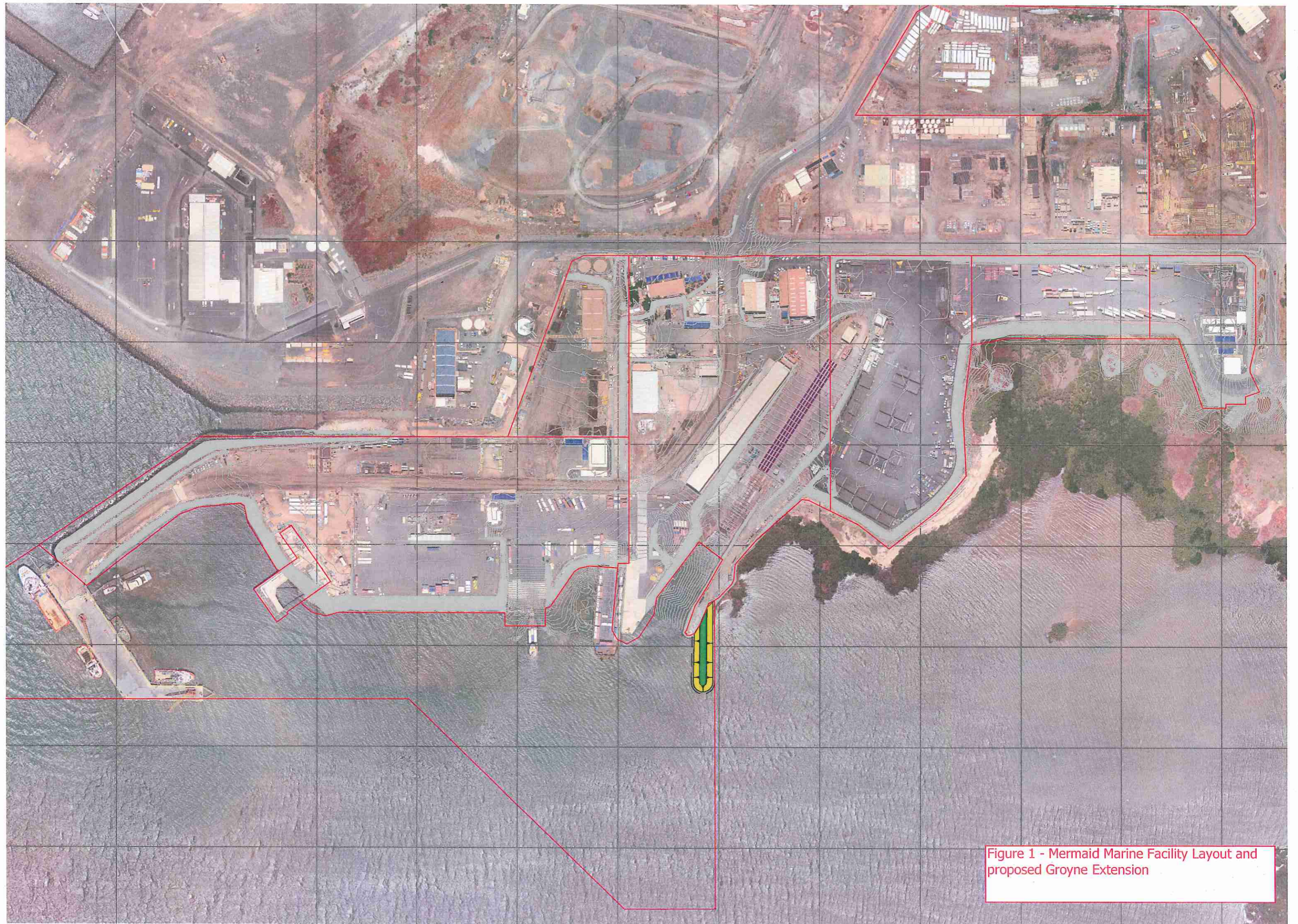


Figure 1 - Mermaid Marine Facility Layout and proposed Groyne Extension