

APPENDIX A

Part 5: Figures 10-11 (part 5 of 8)

Figure 1 Proposal Area

Figure 2 Locations of proposed bridge structures within the Proposal Area

Figure 3 Greater Bunbury Region Scheme (GBRS) regional roads

Figure 4 Previous assessment areas for BORR Northern Section

Figure 5 Vegetation and flora survey locations

Figure 6 Vegetation types

Figure 7 Vegetation condition, dieback and weeds

Figure 8 Threatened and Priority Ecological Communities and Flora

Figure 9 Dieback status and Protectable areas

Figure 10 Fauna habitat types and SW ecological linkages

Figure 11 Threatened Fauna observations within the Proposal Area and contextual sites

Figure 12 Geomorphic Wetlands, rivers and surface water sample locations within the Proposal Area

Figure 13 Geological Mapping (Environmental Geology Series of Bunbury - Burekup)

Figure 14 Acid Sulfate Soils Risk Mapping

Figure 15 BORR ITP groundwater and soil test locations

Figure 16 North Collie Catchment Flood Depth 1 % AEP Pre-Development

Figure 17 Millars Creek Flood Depth 1 % AEP Pre-Development

Figure 18 Gavin's Gully Catchment Flood Depth 1 % AEP Pre-Development

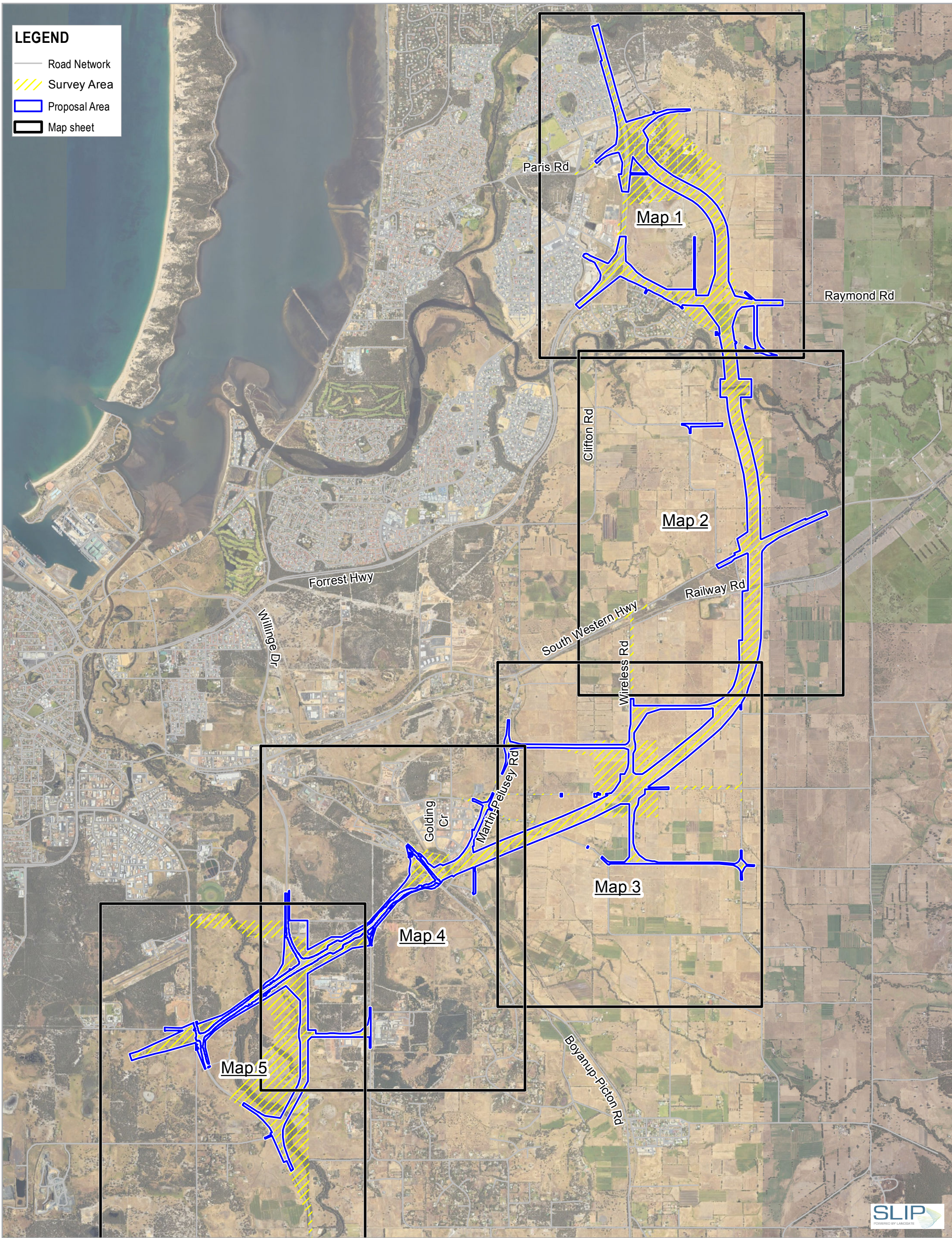
Figure 19 State Register and Municipal Inventory Places within 5 km of the Proposal Area

Figure 20 Existing land use

Figure 21 Forecast traffic noise $L_{Aeq, day}$ Existing 2018 noise levels at the most affected façade (dBA)

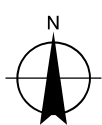
Figure 22 Forecast traffic noise $LA_{eq, day}$ Build 2041 noise levels at the most affected façade - No treatment

Figure 23 Forecast $LA_{eq, day}$ Build 2041 noise levels at the most affected façade - With barriers to meet the 60 dB noise limit at properties adversely affected by the new roads



Paper Size ISO A3
0 420 840 1,260 1,680
Metres

Map Projection: Transverse Mercator
Horizontal Datum: GDA 1994
Grid: GDA 1994 Perth Coastal Grid 1994

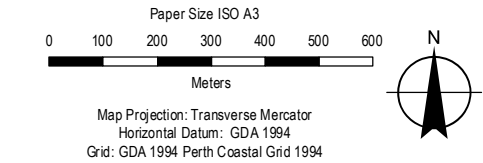
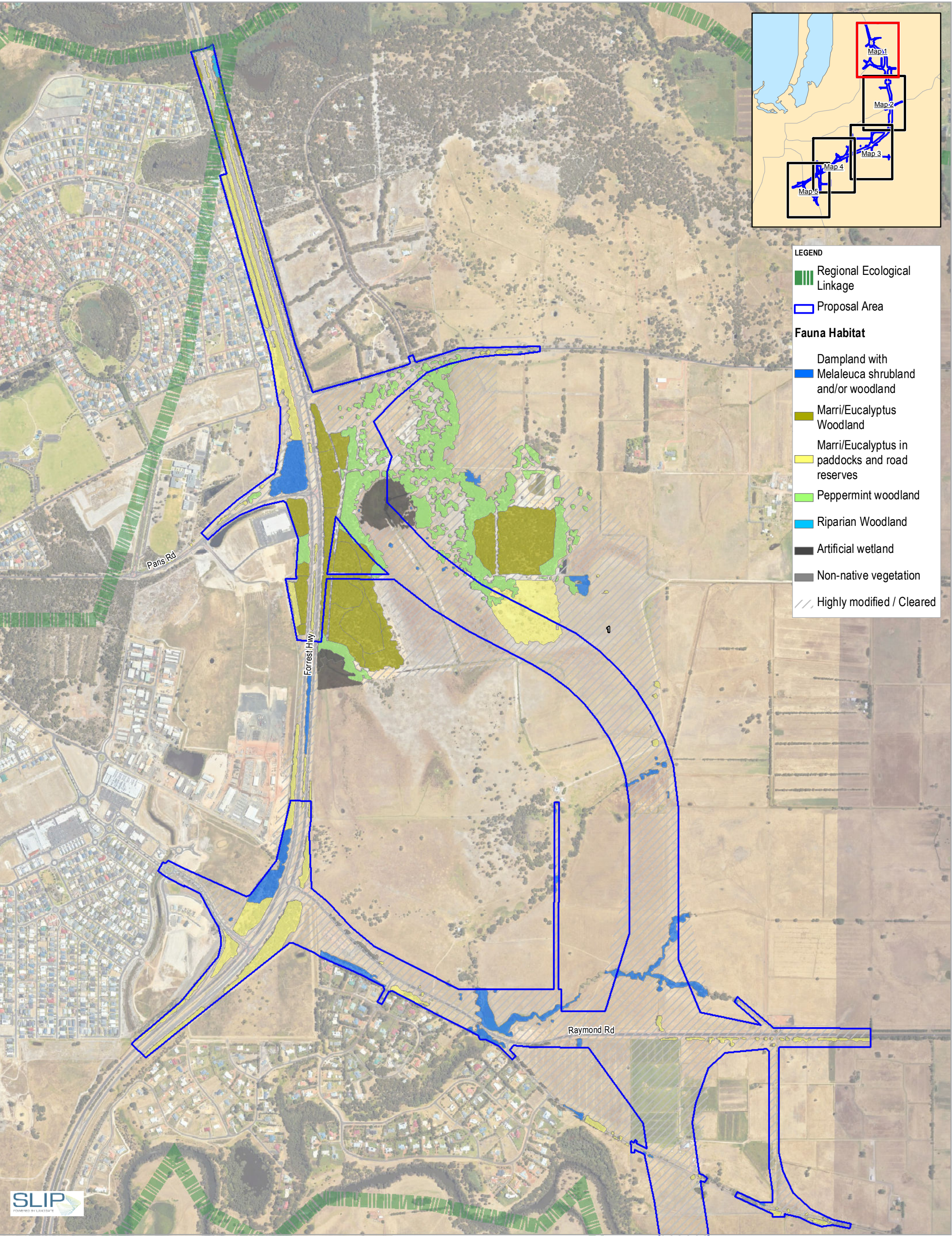


Main Roads Western Australia
Bunbury Outer Ring Road Northern and Central Section
Environmental Referral Supporting Document

Fauna Habitat Types and
SW Ecological Linkages

Project No. 61-37041
Revision No. 0
Date 15/05/2019

FIGURE 10
OVERVIEW



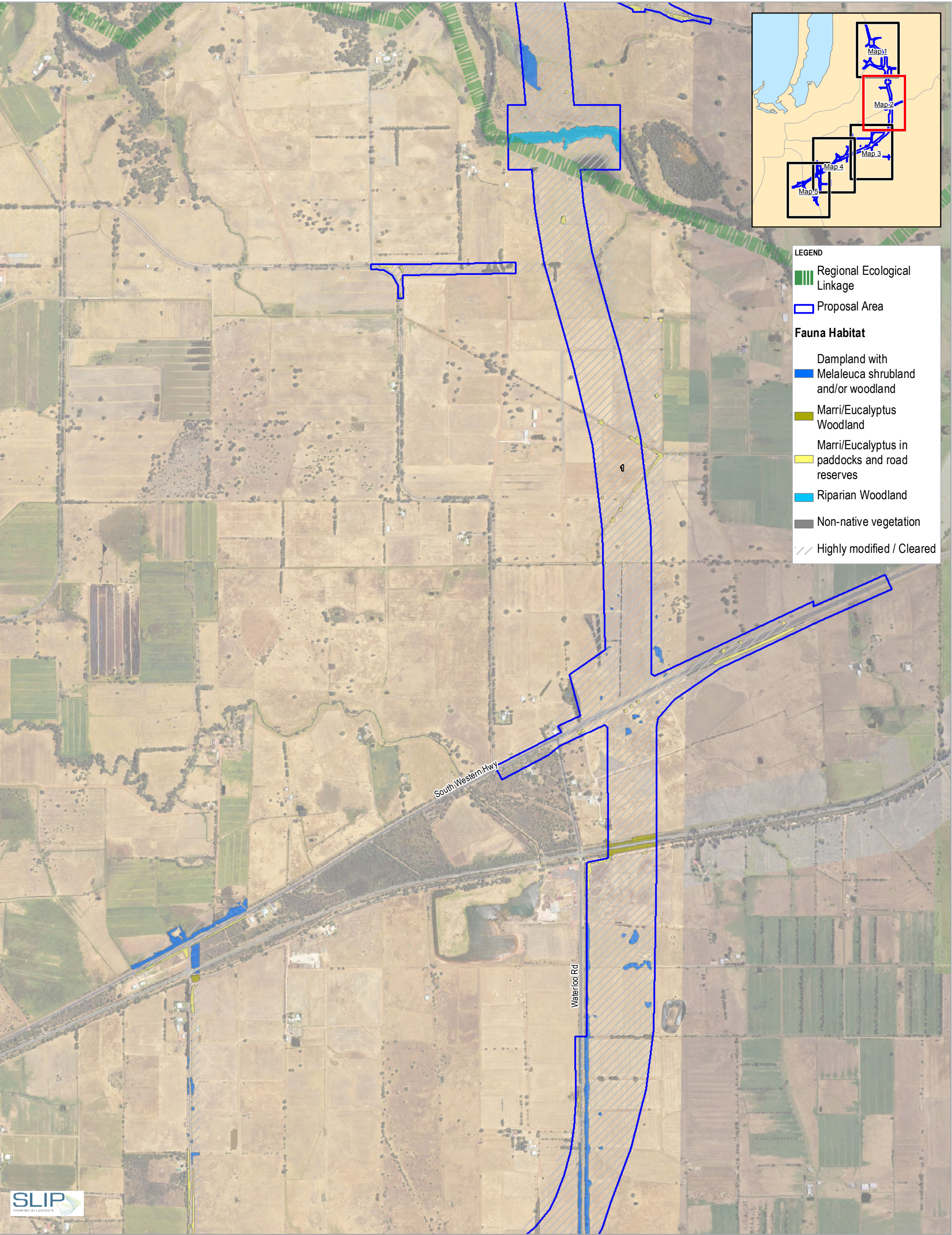
Main Roads Western Australia
Bunbury Outer Ring Road Northern and Central Section
Environmental Referral Supporting Document

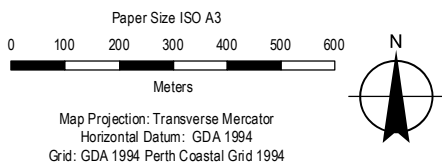
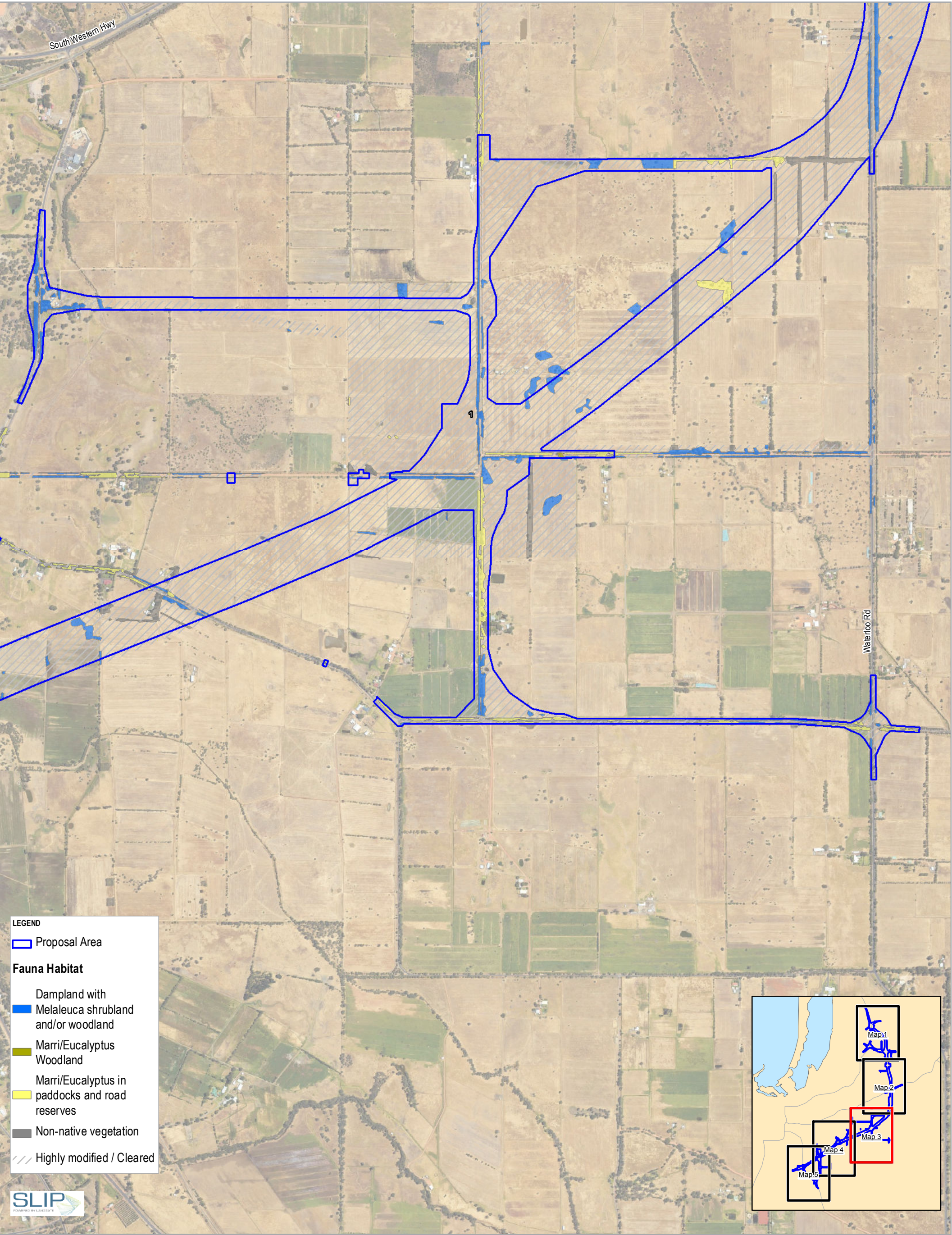
Fauna Habitat Types and
SW Ecological Linkages

Project No. 61-37041
Revision No. 0
Date 13/05/2019

Page 1 of 5

FIGURE 10





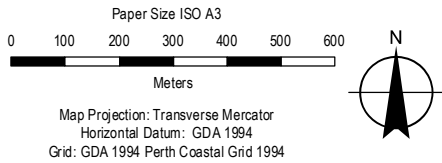
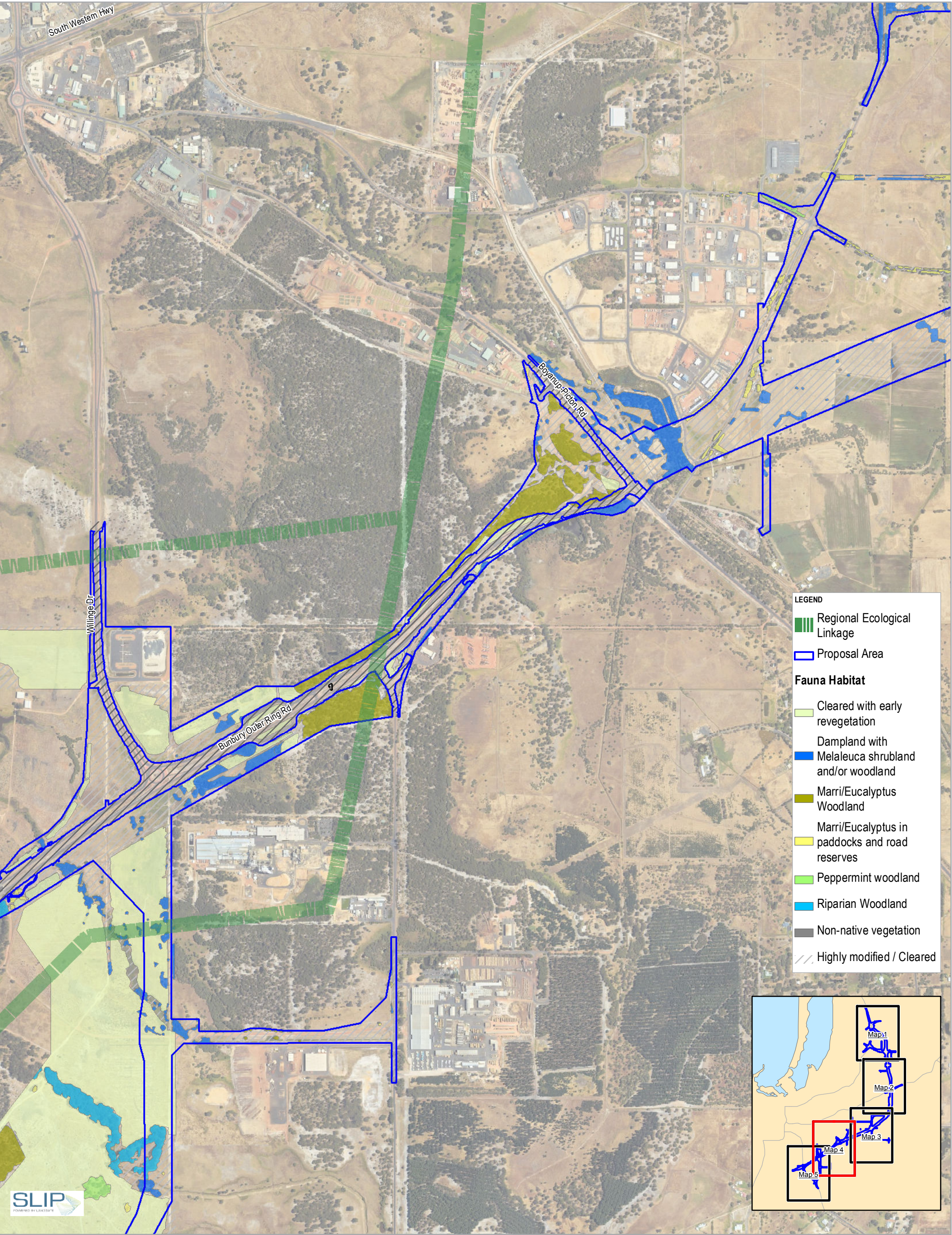
Main Roads Western Australia
Bunbury Outer Ring Road Northern and Central Section
Environmental Referral Supporting Document

**Fauna Habitat Types and
SW Ecological Linkages**

Project No. 61-37041
Revision No. 0
Date 13/05/2019

Page 3 of 5

FIGURE 10



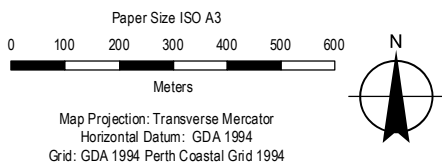
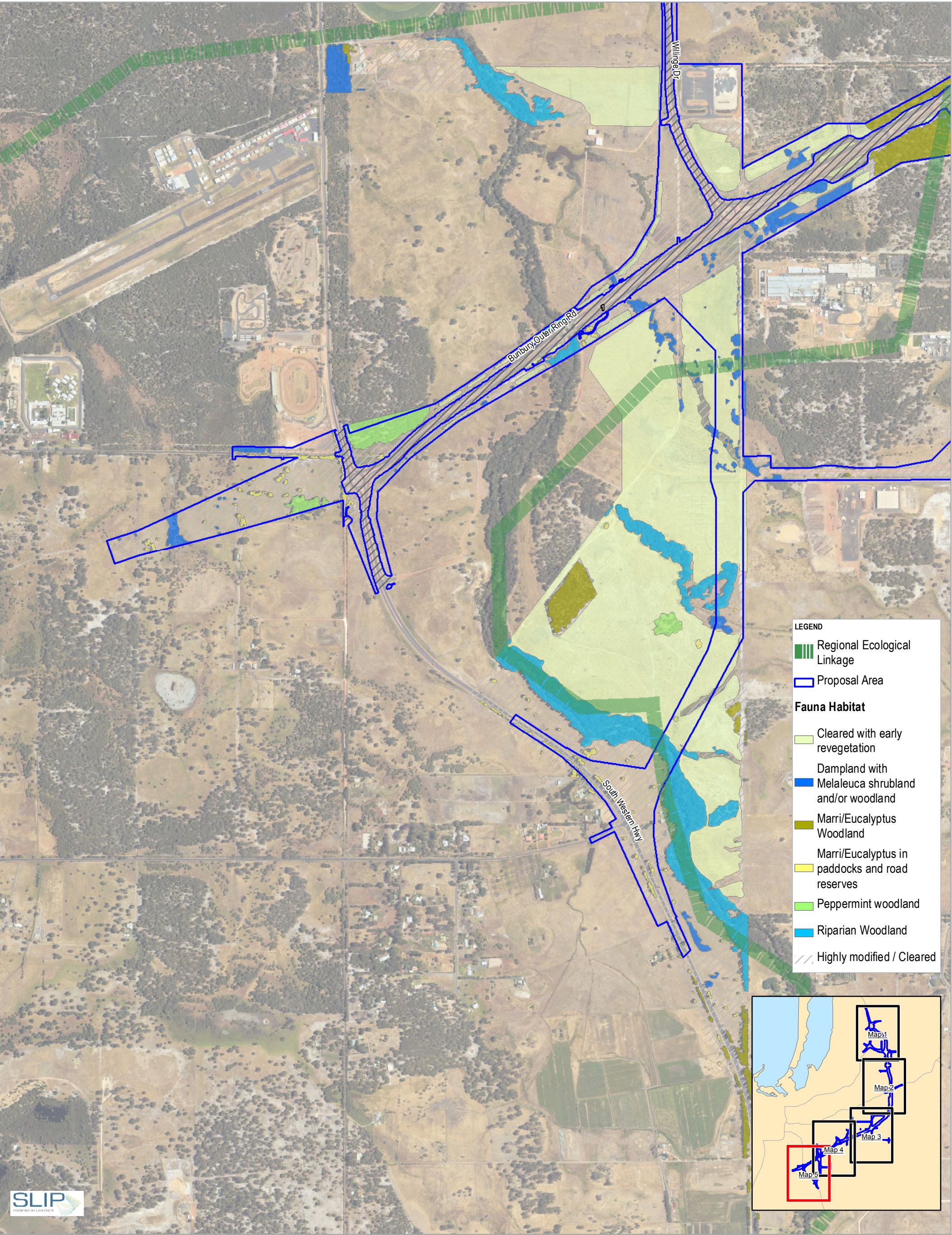
Main Roads Western Australia
Bunbury Outer Ring Road Northern and Central Section
Environmental Referral Supporting Document

Fauna Habitat Types and
SW Ecological Linkages

Project No. 61-37041
Revision No. 0
Date 13/05/2019

Page 4 of 5

FIGURE 10



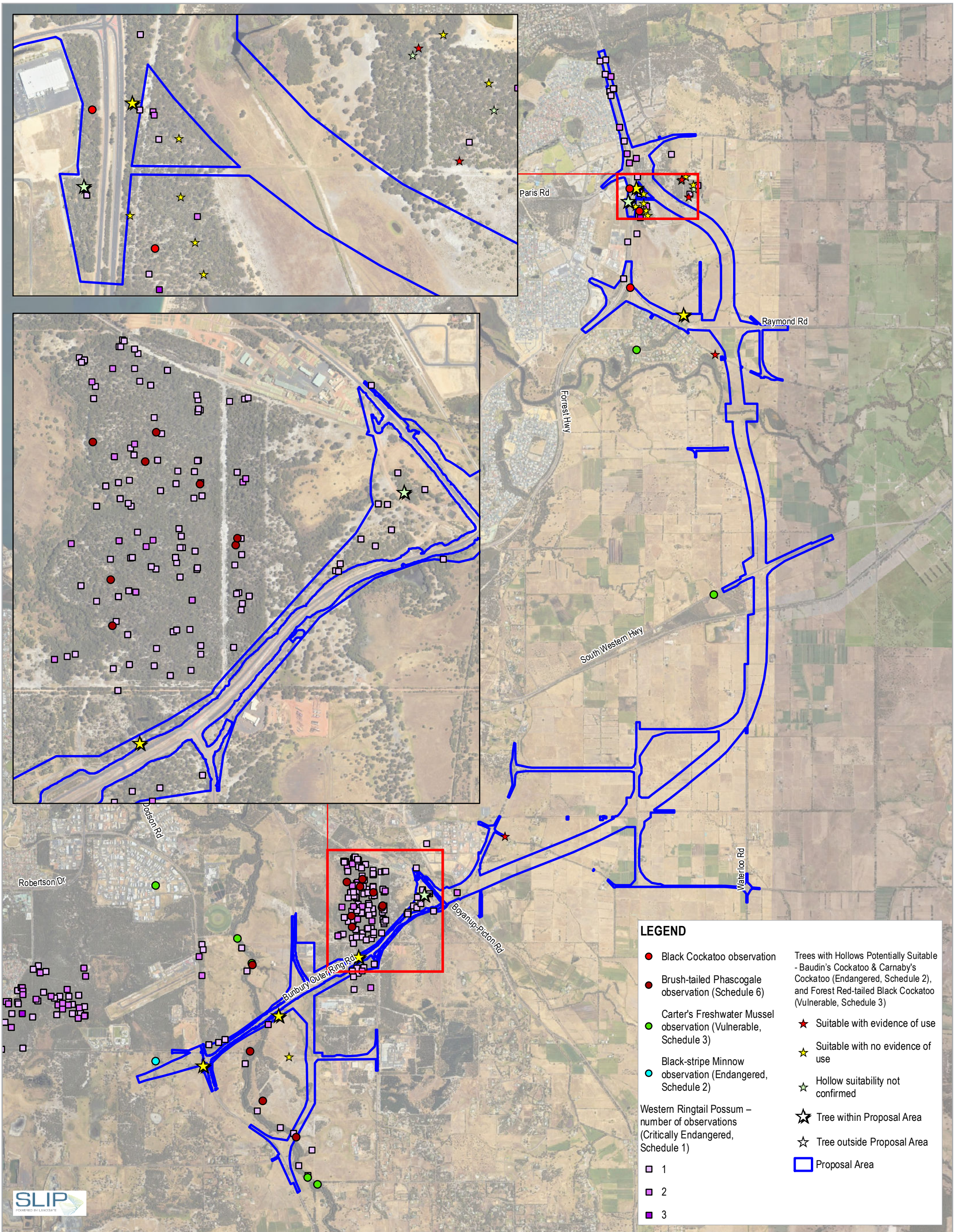
Main Roads Western Australia
Bunbury Outer Ring Road Northern and Central Section
Environmental Referral Supporting Document

Fauna Habitat Types and
SW Ecological Linkages

Project No. 61-37041
Revision No. 0
Date 13/05/2019

Page 5 of 5

FIGURE 10



Paper Size ISO A3
0 560 1,120 1,680 2,240
Metres

Map Projection: Transverse Mercator
Horizontal Datum: GDA 1994
Grid: GDA 1994 Perth Coastal Grid 1994



Main Roads Western Australia
Bunbury Outer Ring Road Northern and Central Section
Environmental Referral Supporting Document

**Threatened Fauna Observations
within the Proposal Area & Contextual Sites**

Project No. 61-37041
Revision No. 0
Date 28/05/2019

FIGURE 11