

## APPENDIX A

---

# Part 4: Figure 7-9 (part 4 of 8)

Figure 1 Proposal Area

Figure 2 Locations of proposed bridge structures within the Proposal Area

Figure 3 Greater Bunbury Region Scheme (GBRS) regional roads

Figure 4 Previous assessment areas for BORR Northern Section

Figure 5 Vegetation and flora survey locations

Figure 6 Vegetation types

Figure 7 Vegetation condition, dieback and weeds

Figure 8 Threatened and Priority Ecological Communities and Flora

Figure 9 Dieback status and Protectable areas

Figure 10 Fauna habitat types and SW ecological linkages

Figure 11 Threatened Fauna observations within the Proposal Area and contextual sites

Figure 12 Geomorphic Wetlands, rivers and surface water sample locations within the Proposal Area

Figure 13 Geological Mapping (Environmental Geology Series of Bunbury - Burekup)

Figure 14 Acid Sulfate Soils Risk Mapping

Figure 15 BORR ITP groundwater and soil test locations

Figure 16 North Collie Catchment Flood Depth 1 % AEP Pre-Development

Figure 17 Millars Creek Flood Depth 1 % AEP Pre-Development

Figure 18 Gavin's Gully Catchment Flood Depth 1 % AEP Pre-Development

Figure 19 State Register and Municipal Inventory Places within 5 km of the Proposal Area

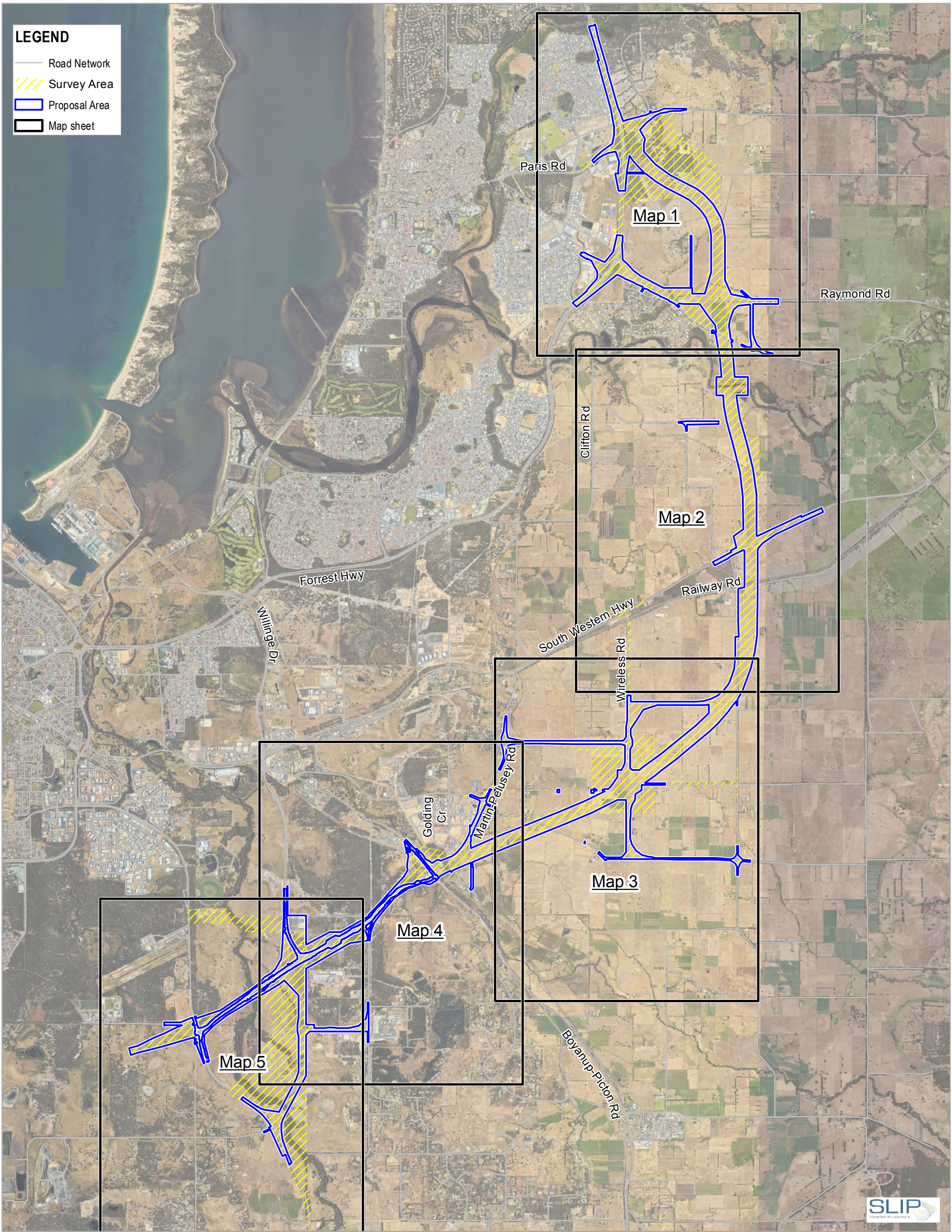
Figure 20 Existing land use

Figure 21 Forecast traffic noise  $L_{Aeq, day}$  Existing 2018 noise levels at the most affected façade (dBA)

**Figure 22 Forecast traffic noise  $LA_{eq, day}$  Build 2041 noise levels at the most affected façade - No treatment**

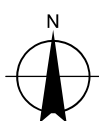
**Figure 23 Forecast  $LA_{eq, day}$  Build 2041 noise levels at the most affected façade - With barriers to meet the 60 dB noise limit at properties adversely affected by the new roads**





Paper Size ISO A3  
0 420 840 1,260 1,680  
Metres

Map Projection: Transverse Mercator  
Horizontal Datum: GDA 1994  
Grid: GDA 1994 Perth Coastal Grid 1994



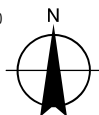
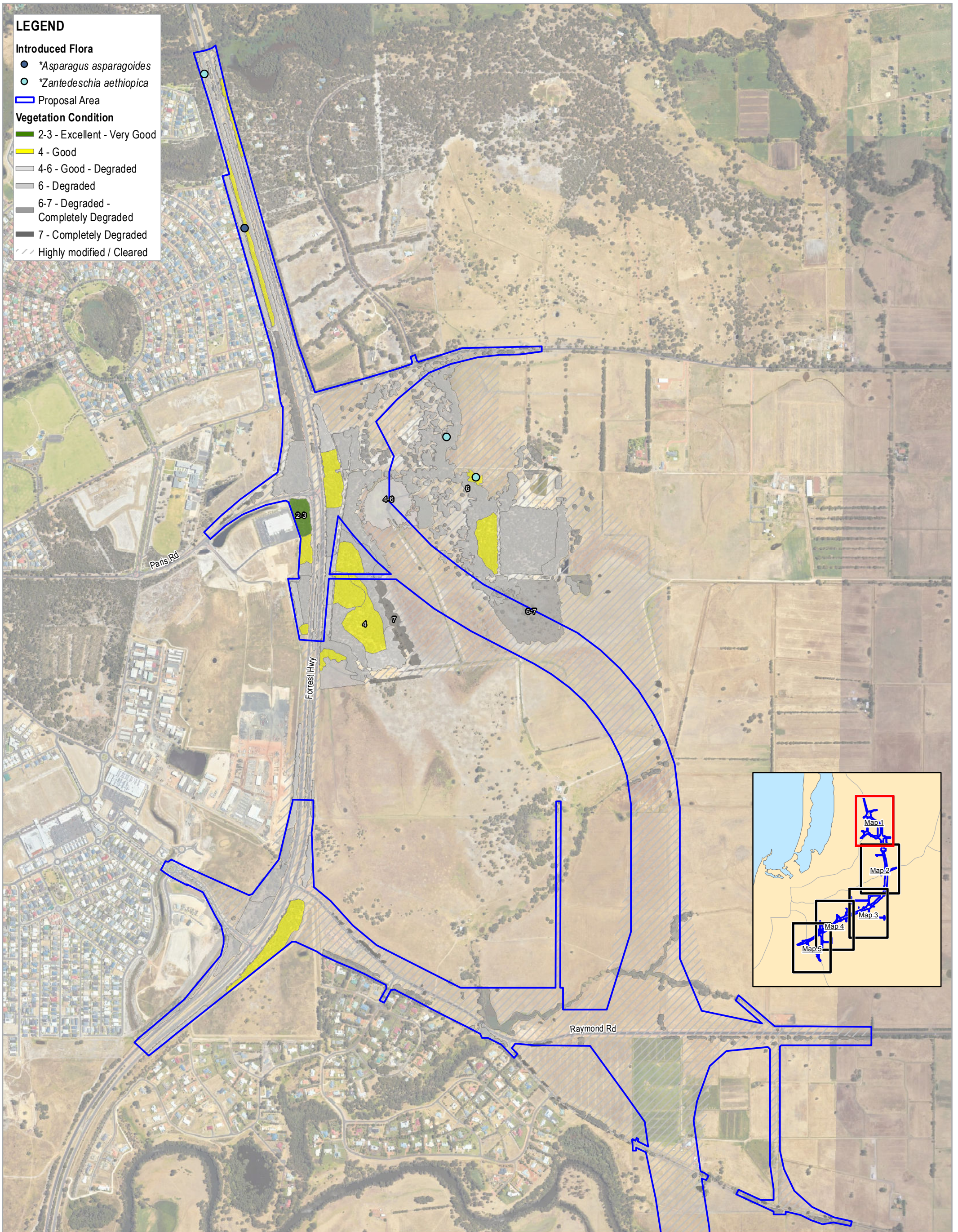
Main Roads Western Australia  
Bunbury Outer Ring Road Northern and Central Section  
Environmental Referral Supporting Document

**Vegetation Condition and Weeds**

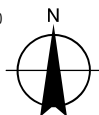
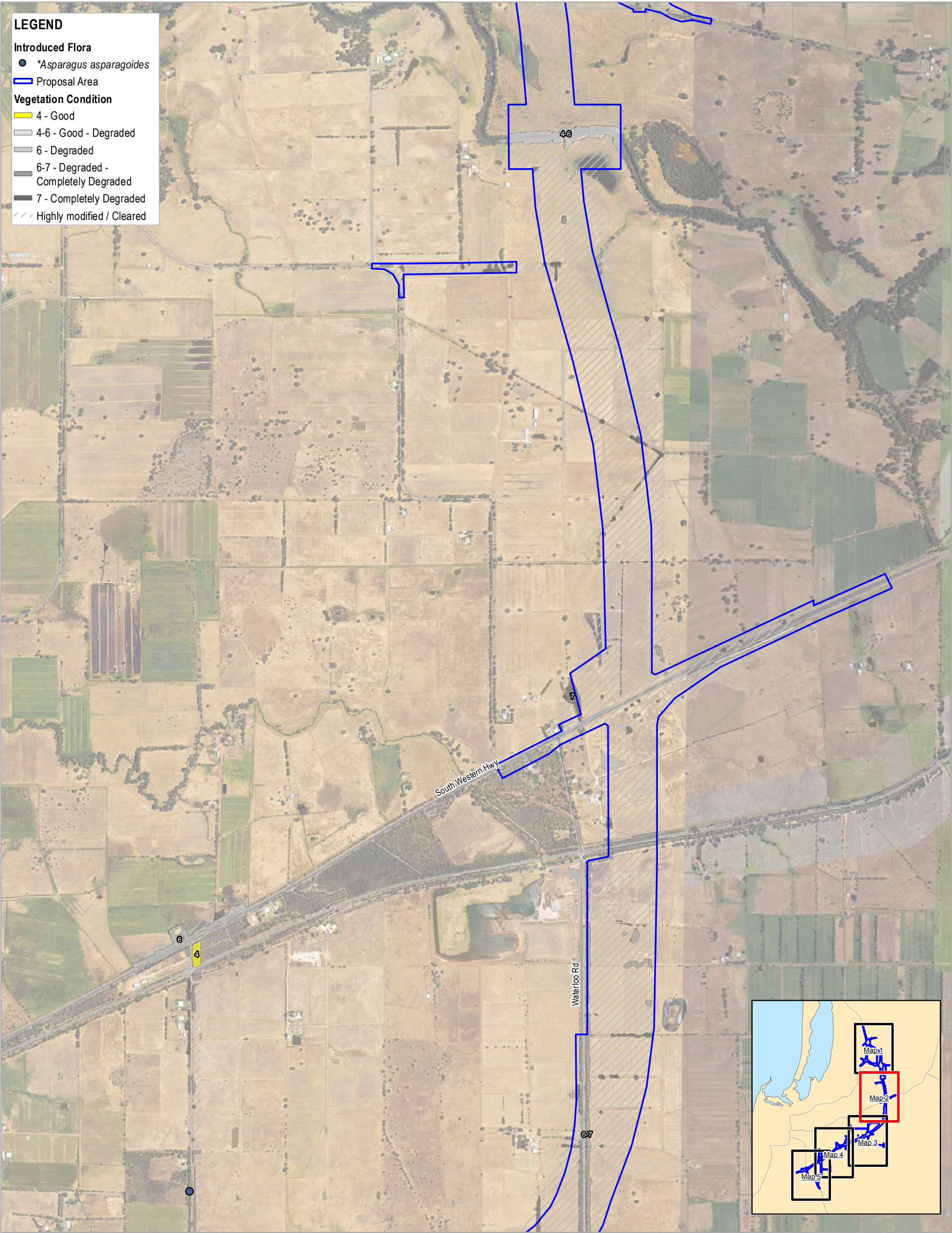
Project No. 61-37041  
Revision No. 0  
Date 09/05/2019

**FIGURE 7**  
**OVERVIEW**

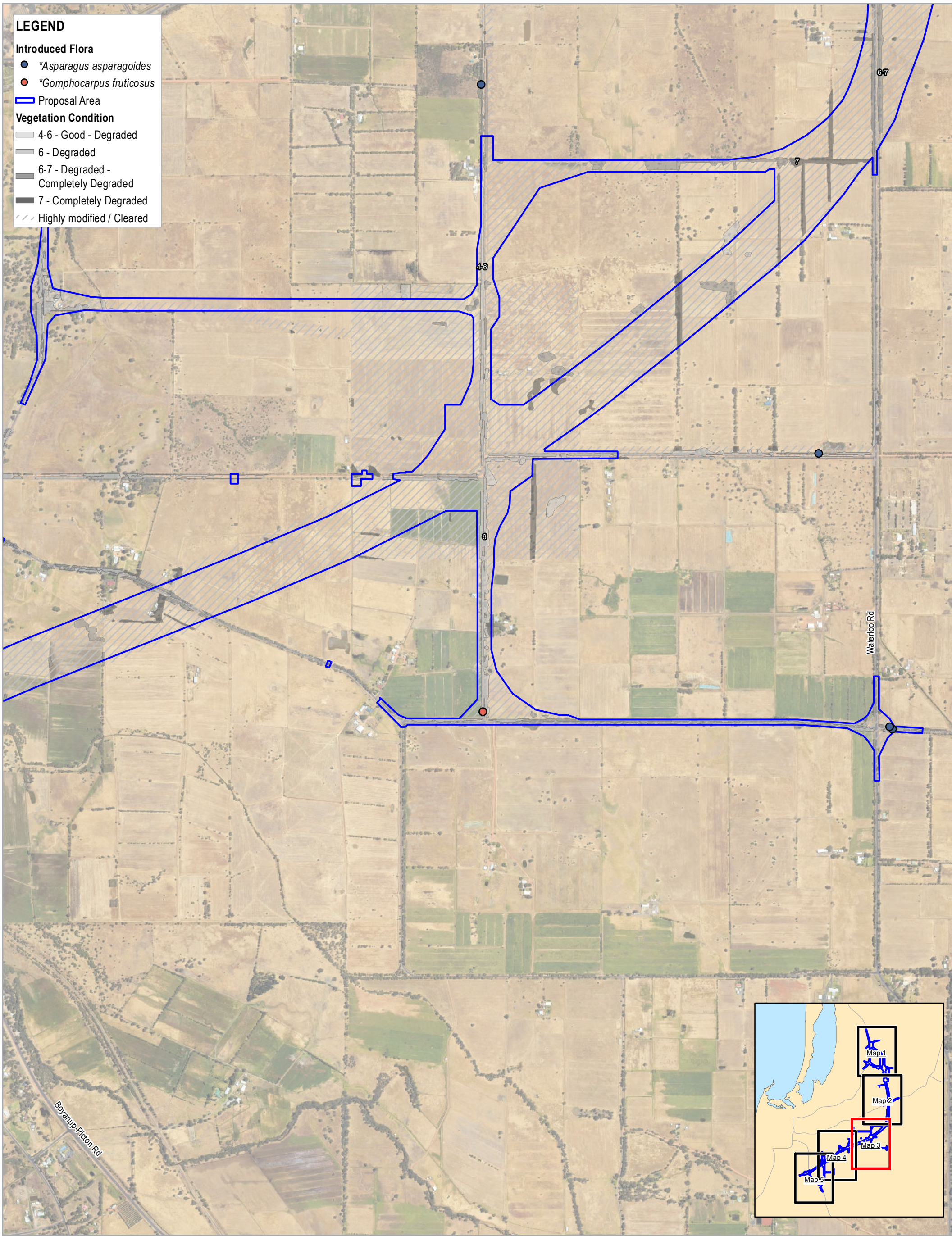




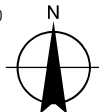
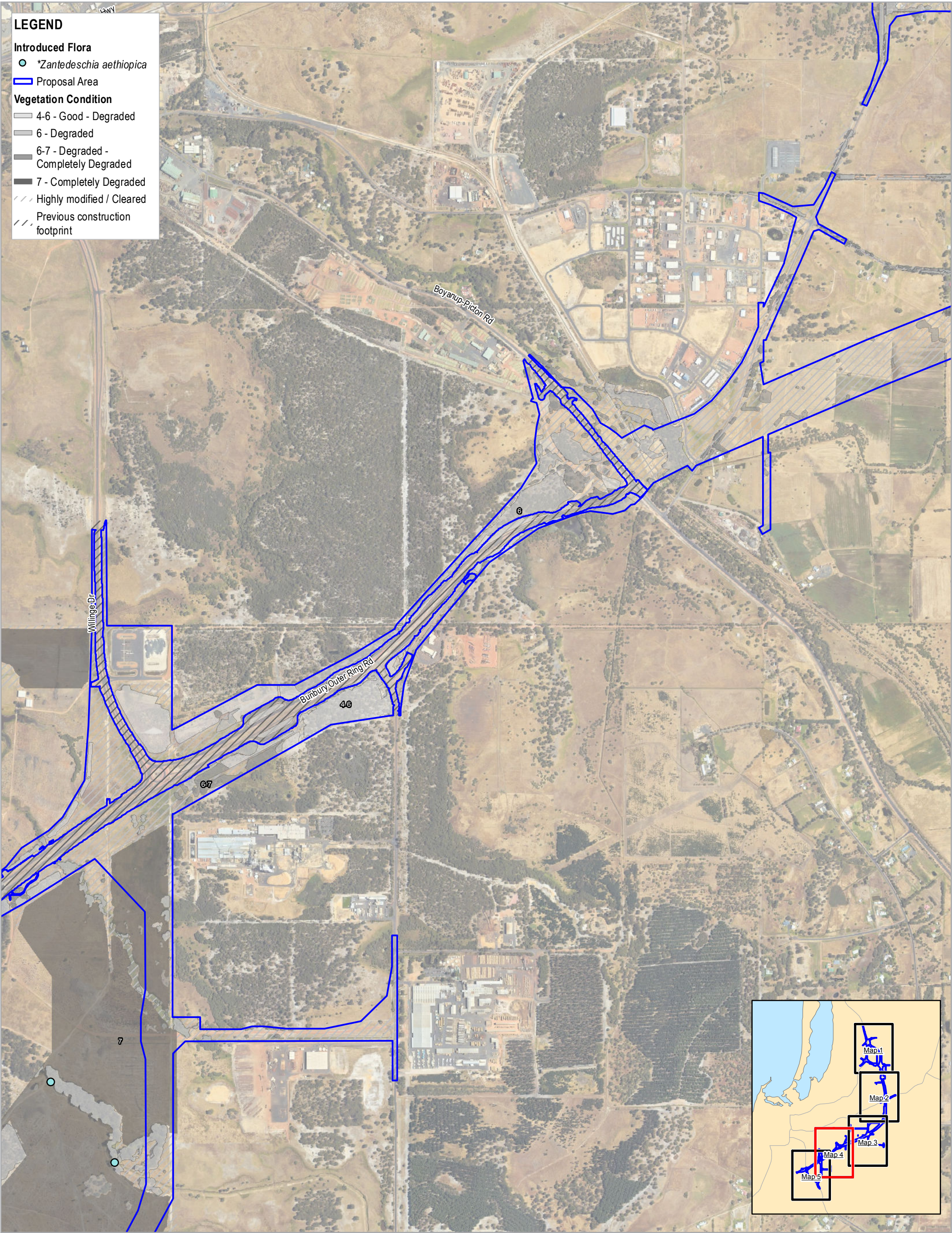




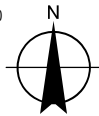
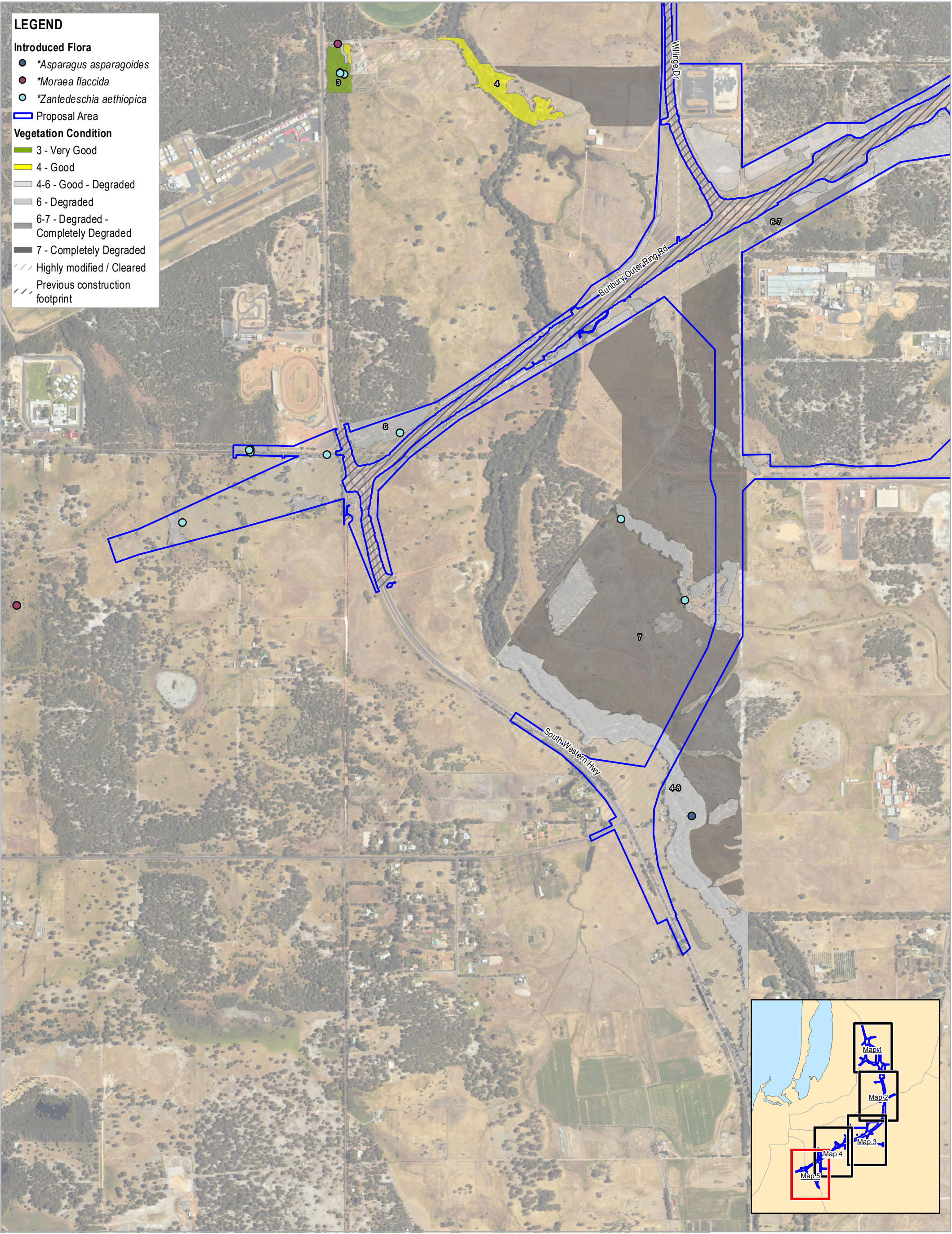




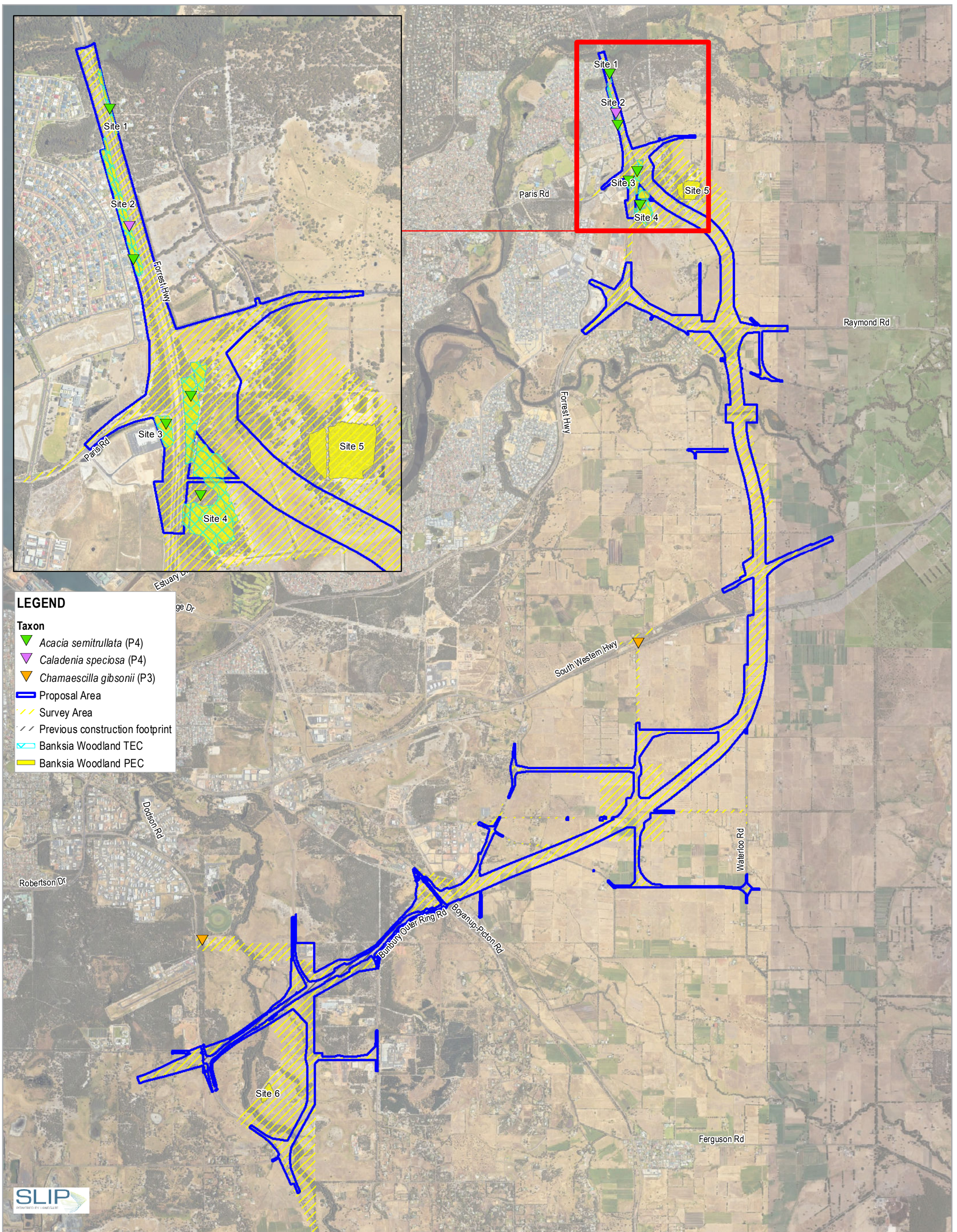






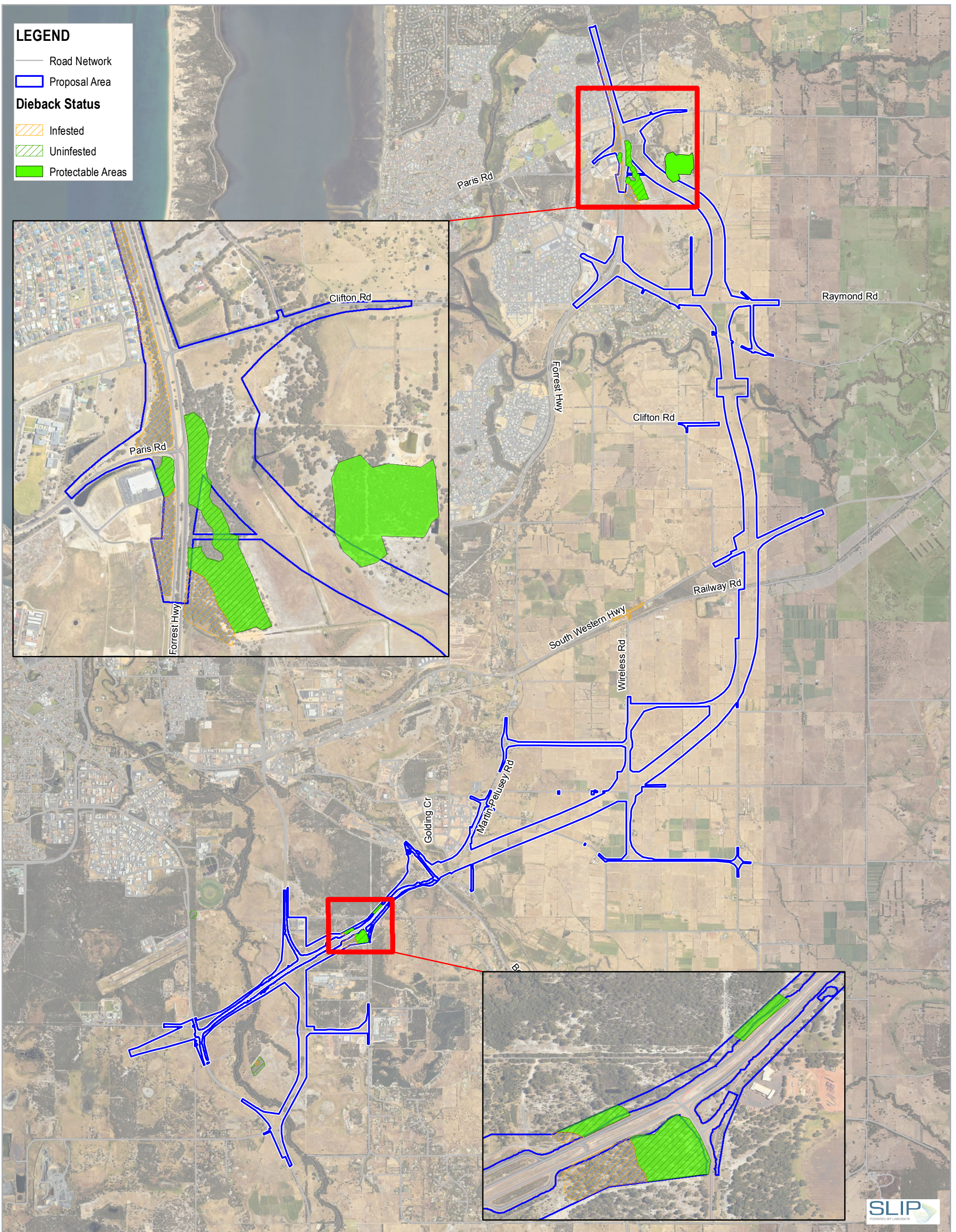






**FIGURE 8**



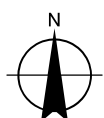


Paper Size ISO A3

0 420 840 1,260 1,680

Metres

Map Projection: Transverse Mercator  
Horizontal Datum: GDA 1994  
Grid: GDA 1994 Perth Coastal Grid 1994



Main Roads Western Australia  
Bunbury Outer Ring Road Northern and Central Section  
Environmental Referral Supporting Document

Dieback Status and Protectable Areas

Project No. 61-37041  
Revision No. 0  
Date 13/05/2019

FIGURE 9