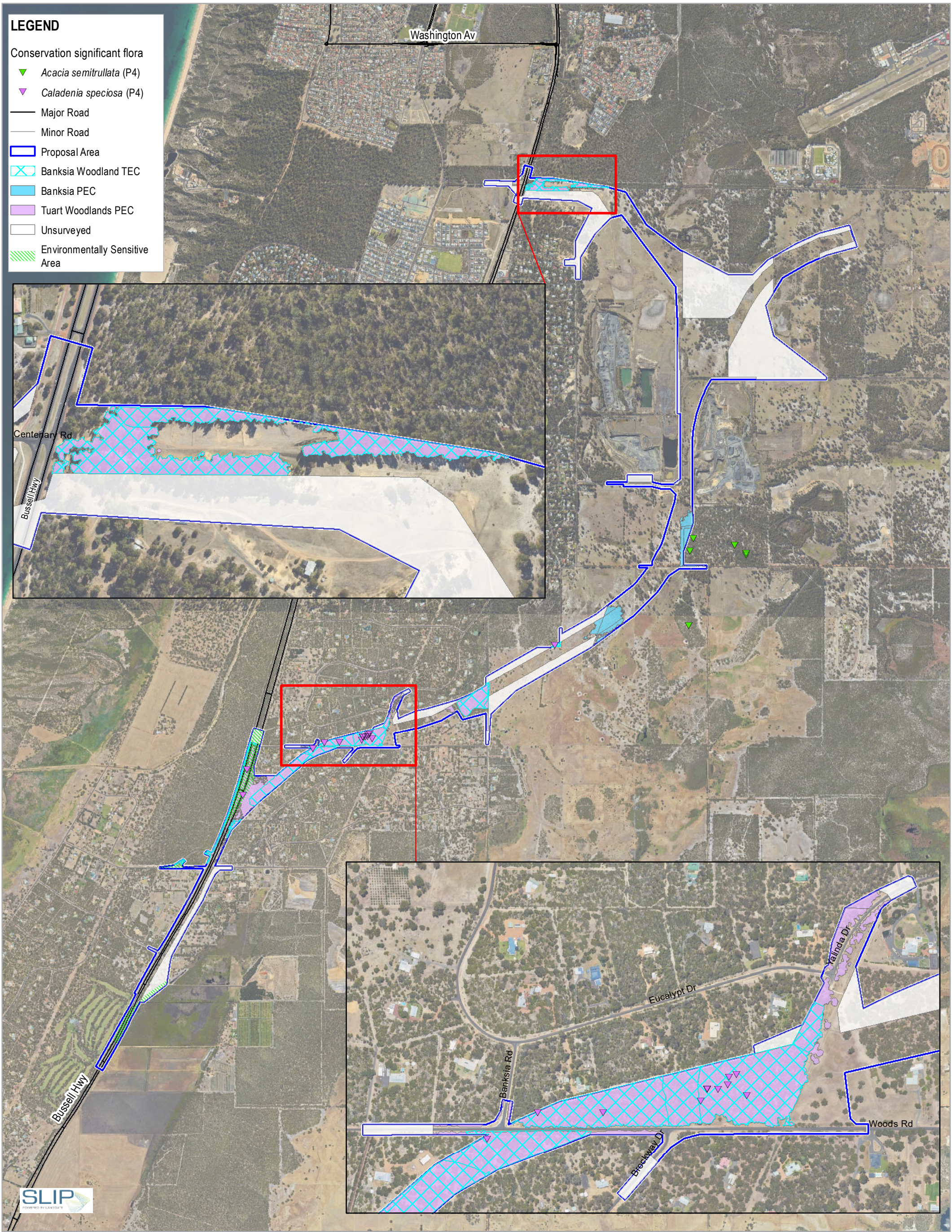


APPENDIX A

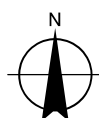
Figures (7-9)

| | |
|-----------|---|
| Figure 1 | Proposal Area |
| Figure 2 | Proposed Bridge Structures |
| Figure 3 | Current Proposal Area and 2012 EP Act Referral Proposal Area |
| Figure 4 | Surveyed and Unsurveyed areas |
| Figure 5 | Vegetation Types |
| Figure 6 | Vegetation Condition |
| Figure 7 | Threatened and Priority Ecological Communities and Flora |
| Figure 8 | Fauna Habitat Types and South West Ecological Linkages |
| Figure 9 | Threatened Fauna Observations within the Proposal Area & Contextual Sites |
| Figure 10 | Hydrology and Surface Water Sample Locations |
| Figure 11 | Acid Sulfate Soil Risk Mapping |
| Figure 12 | Groundwater Test Locations |
| Figure 13 | Bunbury annual rainfall recorded at BoM stations 9514 (1877-1985); 9885 (1985-1995); 9965 (1995-2018) |
| Figure 14 | Temperature recorded at Bunbury BoM station for years 1995 to 2018 |
| Figure 15 | Rainfall recorded at Bunbury BoM station for years 1995 to 2018 |
| Figure 16 | Relative humidity recorded at Bunbury BoM station for years 1995 to 2018 |
| Figure 17 | Aboriginal and European Heritage Sites within 5 km of the Proposal Area |
| Figure 18 | Existing Land Use |
| Figure 19 | Landscape Character Unit Mapping (BORR IPT, 2018) |
| Figure 20 | Visual analysis Mapping (BORR IPT, 2018) |



Paper Size ISO A3
0 200 400 600
Metres

Map Projection: Transverse Mercator
Horizontal Datum: GDA 1994
Grid: GDA 1994 Perth Coastal Grid 1994



Main Roads Western Australia
Southern Section
Environmental Referral Supporting Document

Project No. 61-37041
Revision No. 1
Date 13-Sep-19

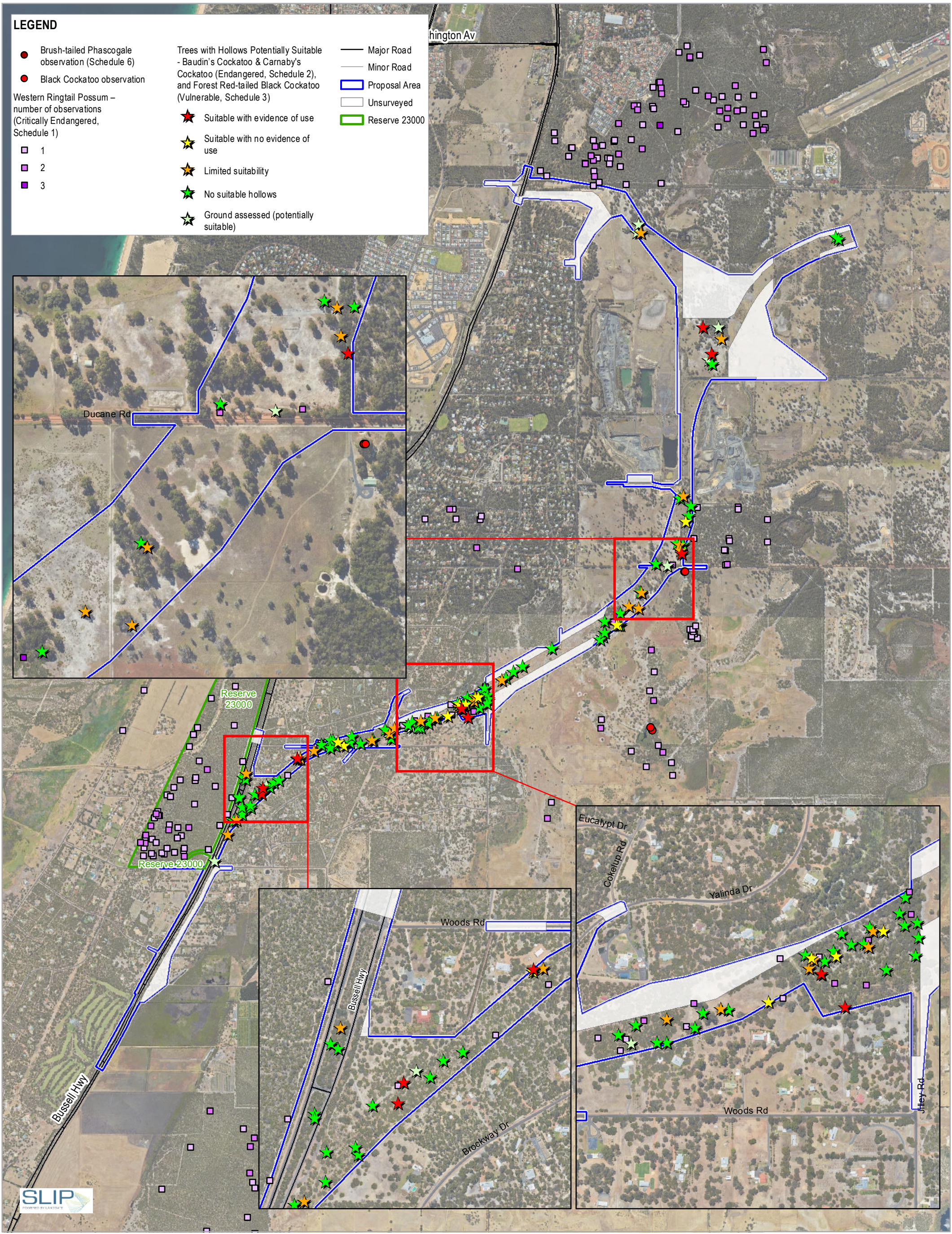
Threatened and Priority
Ecological Communities and Flora

FIGURE 7



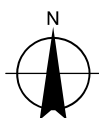






Paper Size ISO A3
0 200 400 600
Metres

Map Projection: Transverse Mercator
Horizontal Datum: GDA 1994
Grid: GDA 1994 Perth Coastal Grid 1994



Main Roads Western Australia
Southern Section
Environmental Referral Supporting Document

Threatened Fauna Observations
within the Proposal Area & Contextual Sites

Project No. 61-37041
Revision No. 1
Date 13/08/2019

FIGURE 9