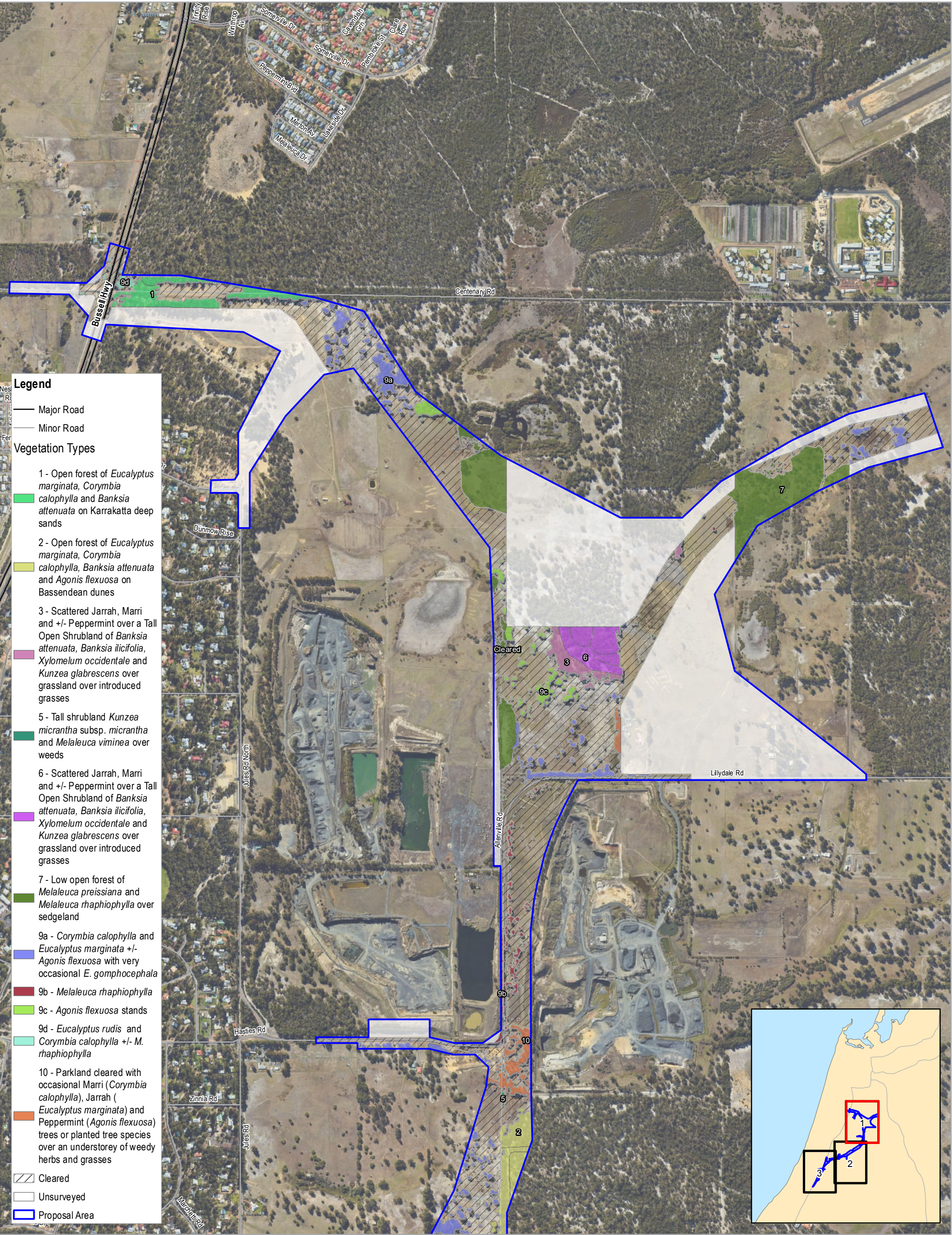
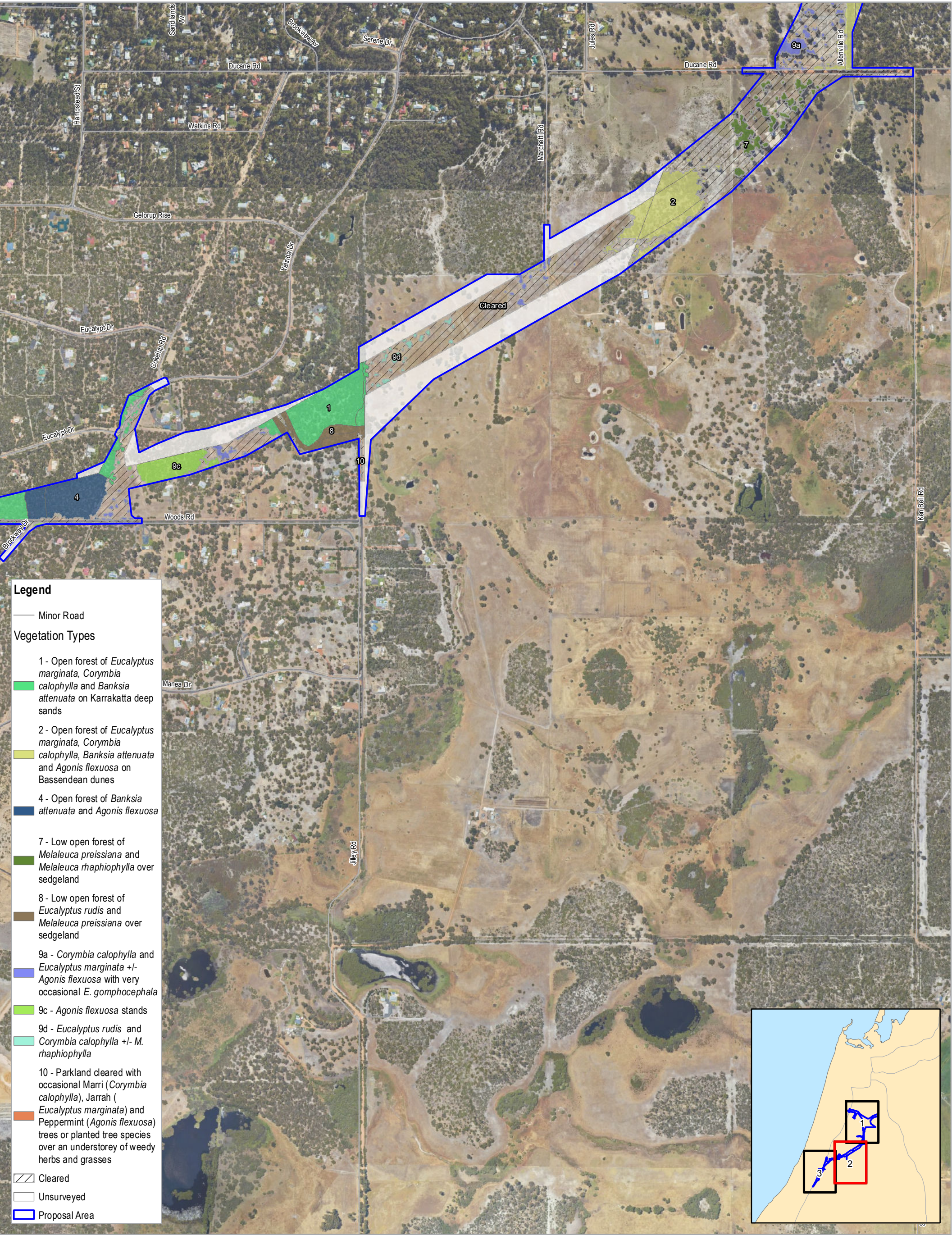


APPENDIX A

Figures (5-6)

Figure 1	Proposal Area
Figure 2	Proposed Bridge Structures
Figure 3	Current Proposal Area and 2012 EP Act Referral Proposal Area
Figure 4	Surveyed and Unsurveyed areas
Figure 5	Vegetation Types
Figure 6	Vegetation Condition
Figure 7	Threatened and Priority Ecological Communities and Flora
Figure 8	Fauna Habitat Types and South West Ecological Linkages
Figure 9	Threatened Fauna Observations within the Proposal Area & Contextual Sites
Figure 10	Hydrology and Surface Water Sample Locations
Figure 11	Acid Sulfate Soil Risk Mapping
Figure 12	Groundwater Test Locations
Figure 13	Bunbury annual rainfall recorded at BoM stations 9514 (1877-1985); 9885 (1985-1995); 9965 (1995-2018)
Figure 14	Temperature recorded at Bunbury BoM station for years 1995 to 2018
Figure 15	Rainfall recorded at Bunbury BoM station for years 1995 to 2018
Figure 16	Relative humidity recorded at Bunbury BoM station for years 1995 to 2018
Figure 17	Aboriginal and European Heritage Sites within 5 km of the Proposal Area
Figure 18	Existing Land Use
Figure 19	Landscape Character Unit Mapping (BORR IPT, 2018)
Figure 20	Visual analysis Mapping (BORR IPT, 2018)





Legend

Minor Road

Vegetation Types

1 - Open forest of *Eucalyptus marginata*, *Corymbia calophylla* and *Banksia attenuata* on Karakatta deep sands

2 - Open forest of *Eucalyptus marginata*, *Corymbia calophylla*, *Banksia attenuata* and *Agonis flexuosa* on Bassendean dunes

4 - Open forest of *Banksia attenuata* and *Agonis flexuosa*

7 - Low open forest of *Melaleuca preissiana* and *Melaleuca raphiophylla* over sedgeland

8 - Low open forest of *Eucalyptus rudis* and *Melaleuca preissiana* over sedgeland

9a - *Corymbia calophylla* and *Eucalyptus marginata* +/- *Agonis flexuosa* with very occasional *E. gomphocephala*

9c - *Agonis flexuosa* stands

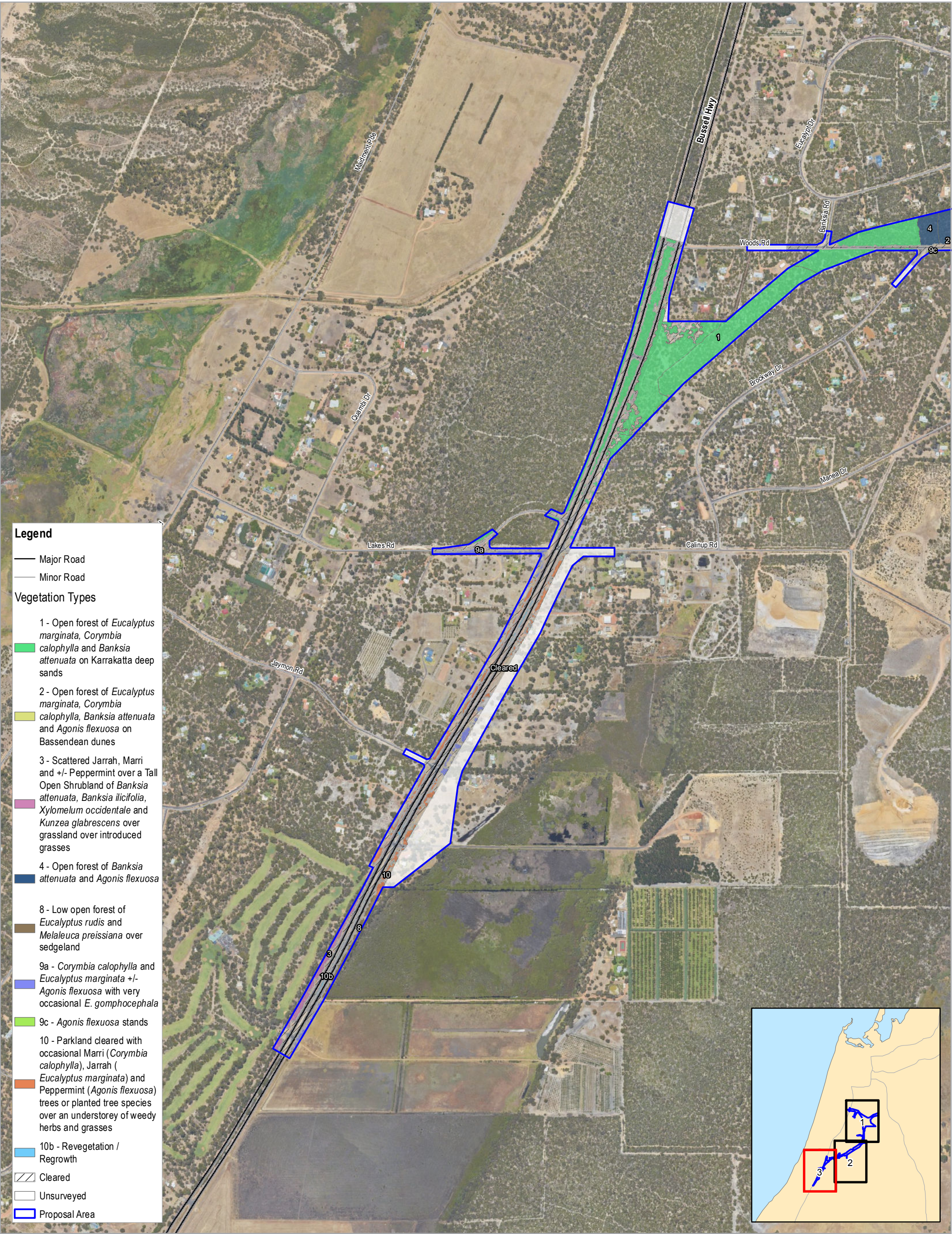
9d - *Eucalyptus rudis* and *Corymbia calophylla* +/- *M. raphiophylla*

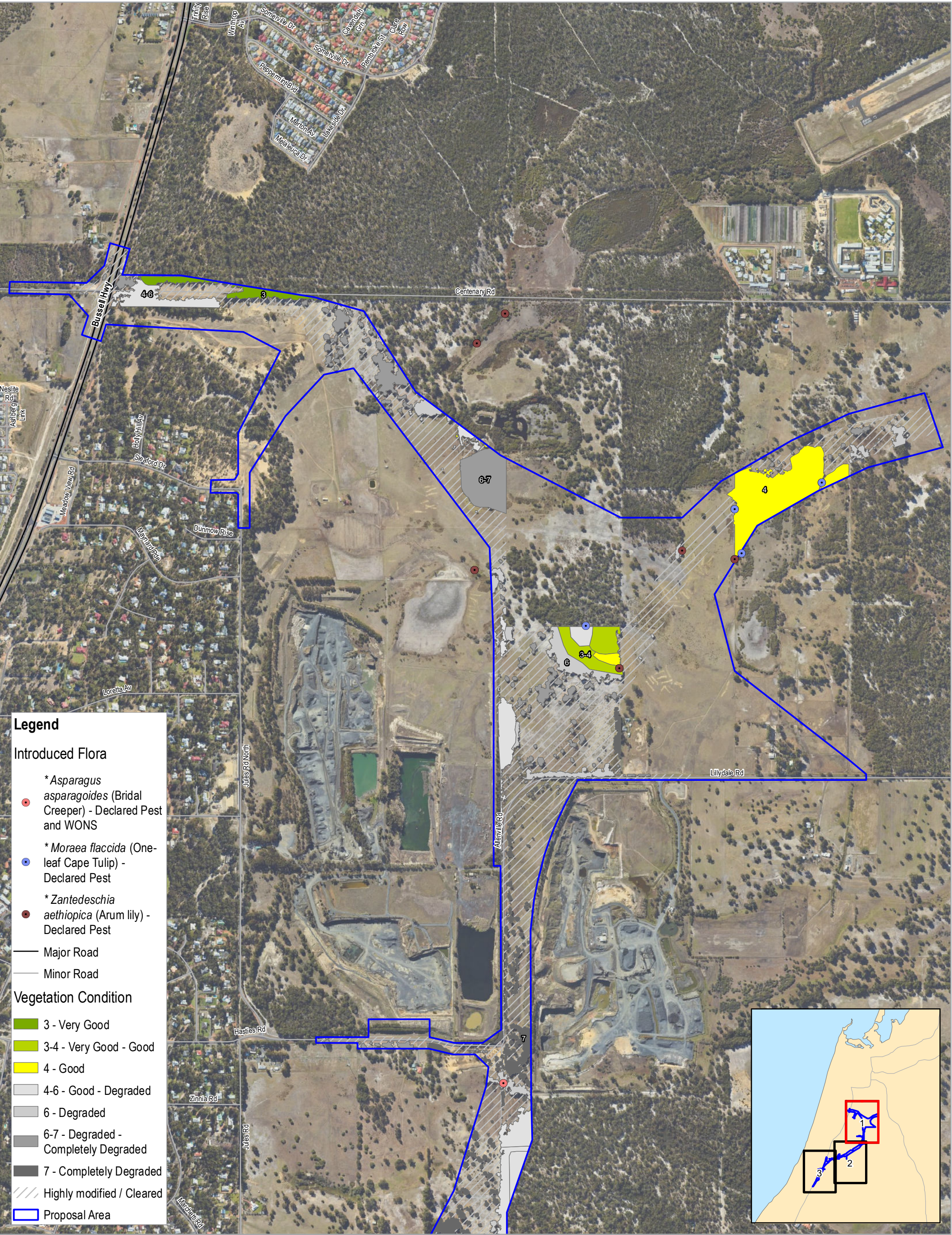
10 - Parkland cleared with occasional Marri (*Corymbia calophylla*), Jarrah (*Eucalyptus marginata*) and Peppermint (*Agonis flexuosa*) trees or planted tree species over an understorey of weedy herbs and grasses

Cleared

Unsurveyed

Proposal Area





Legend

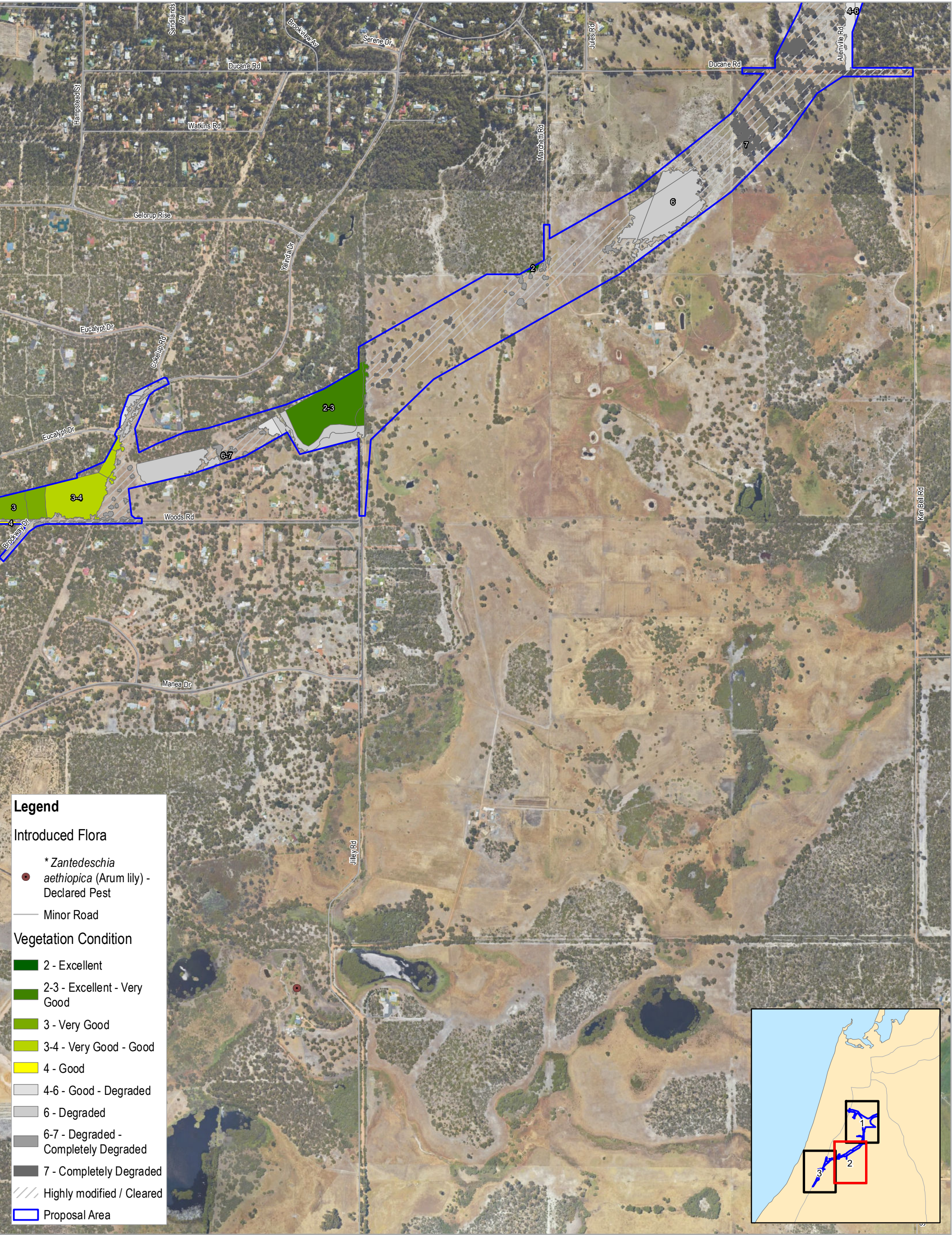
Introduced Flora

- * *Asparagus asparagoides* (Bridal Creeper) - Declared Pest and WONS
- * *Moraea flaccida* (One-leaf Cape Tulip) - Declared Pest
- * *Zantedeschia aethiopica* (Arum lily) - Declared Pest

- Major Road
- Minor Road

Vegetation Condition

- 3 - Very Good
- 3-4 - Very Good - Good
- 4 - Good
- 4-6 - Good - Degraded
- 6 - Degraded
- 6-7 - Degraded - Completely Degraded
- 7 - Completely Degraded
- Highly modified / Cleared
- Proposal Area



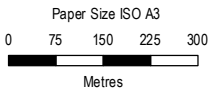
Legend

Introduced Flora

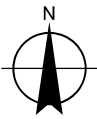
- * *Zantedeschia aethiopica* (Arum lily) - Declared Pest
- Minor Road

Vegetation Condition

- 2 - Excellent
- 2-3 - Excellent - Very Good
- 3 - Very Good
- 3-4 - Very Good - Good
- 4 - Good
- 4-6 - Good - Degraded
- 6 - Degraded
- 6-7 - Degraded - Completely Degraded
- 7 - Completely Degraded
- Highly modified / Cleared
- Proposal Area



Map Projection: Transverse Mercator
Horizontal Datum: GDA 1994
Grid: GDA 1994 Perth Coastal Grid 1994



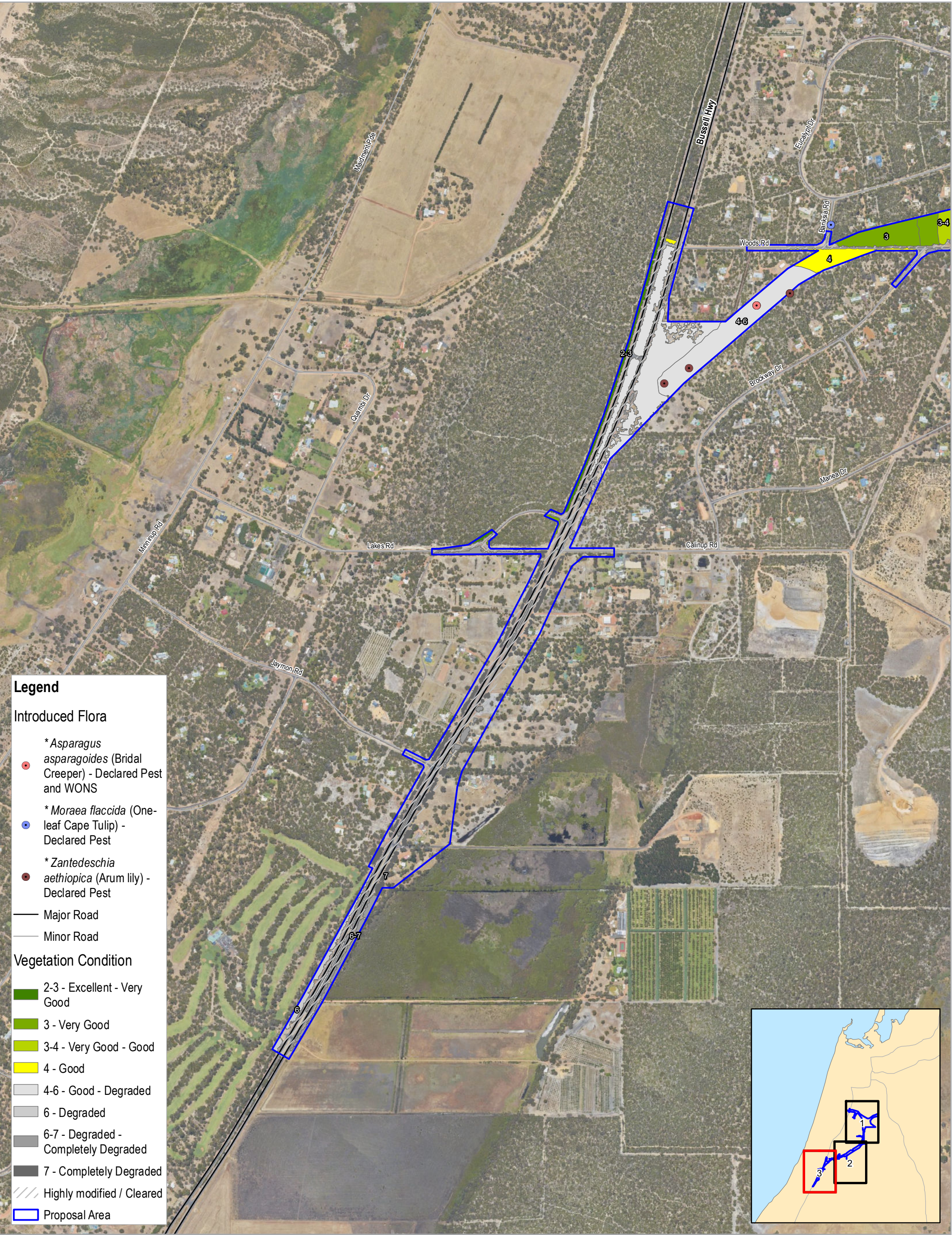
Main Roads Western Australia
Southern Section
Environmental Referral Supporting Document

Project No. 61-37041
Revision No. 2
Date 13-Sep-19

Vegetation Condition

Page 2 of 3

FIGURE 6



Legend

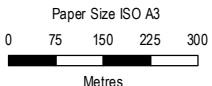
Introduced Flora

- * *Asparagus asparagoides* (Bridal Creeper) - Declared Pest and WONS
- * *Moraea flaccida* (One-leaf Cape Tulip) - Declared Pest
- * *Zantedeschia aethiopica* (Arum lily) - Declared Pest

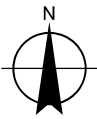
— Major Road
— Minor Road

Vegetation Condition

- 2-3 - Excellent - Very Good
- 3 - Very Good
- 3-4 - Very Good - Good
- 4 - Good
- 4-6 - Good - Degraded
- 6 - Degraded
- 6-7 - Degraded - Completely Degraded
- 7 - Completely Degraded
- Highly modified / Cleared
- Proposal Area



Map Projection: Transverse Mercator
Horizontal Datum: GDA 1994
Grid: GDA 1994 Perth Coastal Grid 1994



Main Roads Western Australia
Southern Section
Environmental Referral Supporting Document

Project No. 61-37041
Revision No. 2
Date 13-Sep-19

Vegetation Condition

Page 3 of 3

FIGURE 6