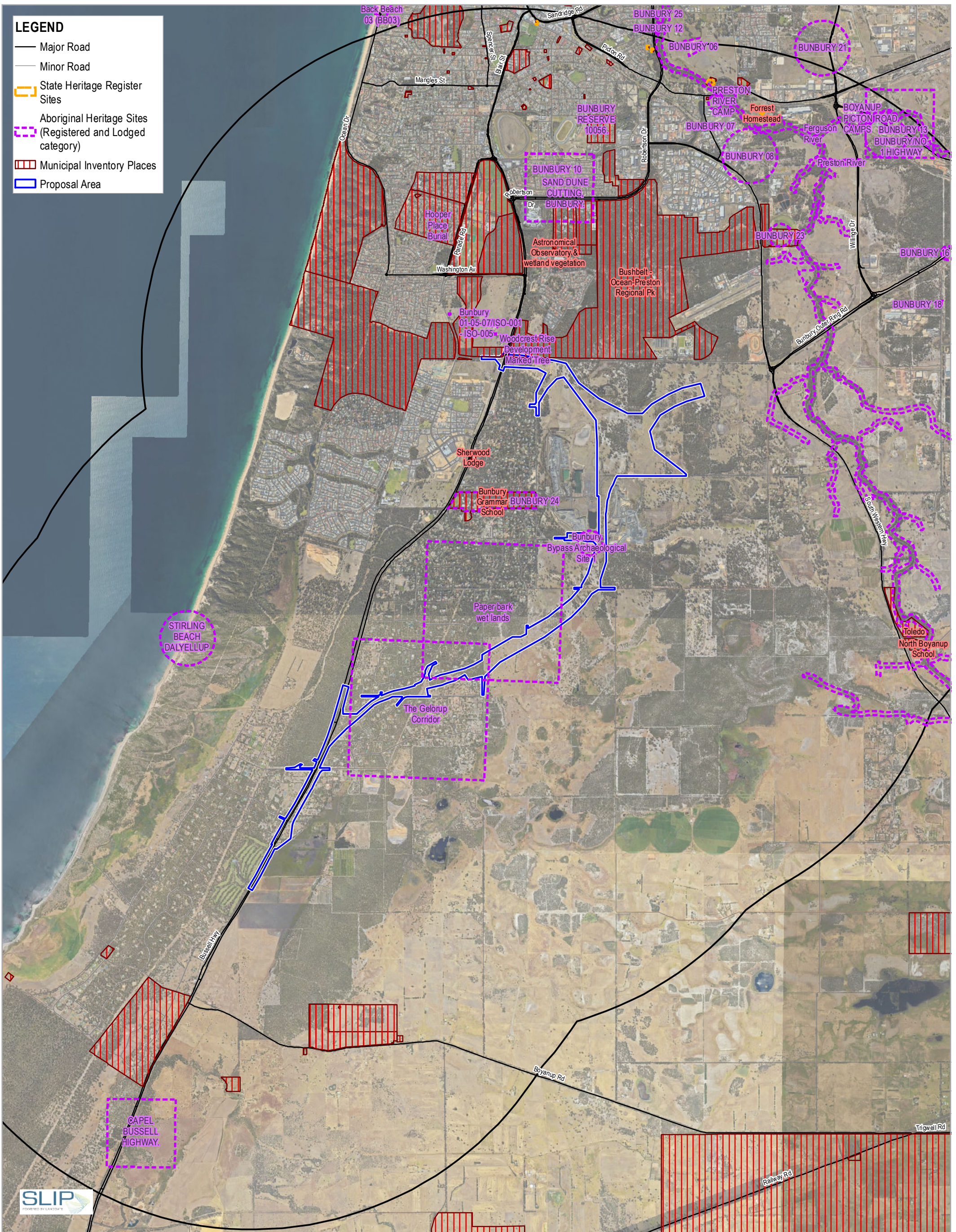


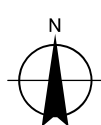
APPENDIX A

Figures (17-20)

Figure 1	Proposal Area
Figure 2	Proposed Bridge Structures
Figure 3	Current Proposal Area and 2012 EP Act Referral Proposal Area
Figure 4	Surveyed and Unsurveyed areas
Figure 5	Vegetation Types
Figure 6	Vegetation Condition
Figure 7	Threatened and Priority Ecological Communities and Flora
Figure 8	Fauna Habitat Types and South West Ecological Linkages
Figure 9	Threatened Fauna Observations within the Proposal Area & Contextual Sites
Figure 10	Hydrology and Surface Water Sample Locations
Figure 11	Acid Sulfate Soil Risk Mapping
Figure 12	Groundwater Test Locations
Figure 13	Bunbury annual rainfall recorded at BoM stations 9514 (1877-1985); 9885 (1985-1995); 9965 (1995-2018)
Figure 14	Temperature recorded at Bunbury BoM station for years 1995 to 2018
Figure 15	Rainfall recorded at Bunbury BoM station for years 1995 to 2018
Figure 16	Relative humidity recorded at Bunbury BoM station for years 1995 to 2018
Figure 17	Aboriginal and European Heritage Sites within 5 km of the Proposal Area
Figure 18	Existing Land Use
Figure 19	Landscape Character Unit Mapping (BORR IPT, 2018)
Figure 20	Visual analysis Mapping (BORR IPT, 2018)



Paper Size ISO A3
0 0.5 1 1.5 2
Kilometres
Map Projection: Transverse Mercator
Horizontal Datum: GDA 1994
Grid: GDA 1994 Perth Coastal Grid 1994

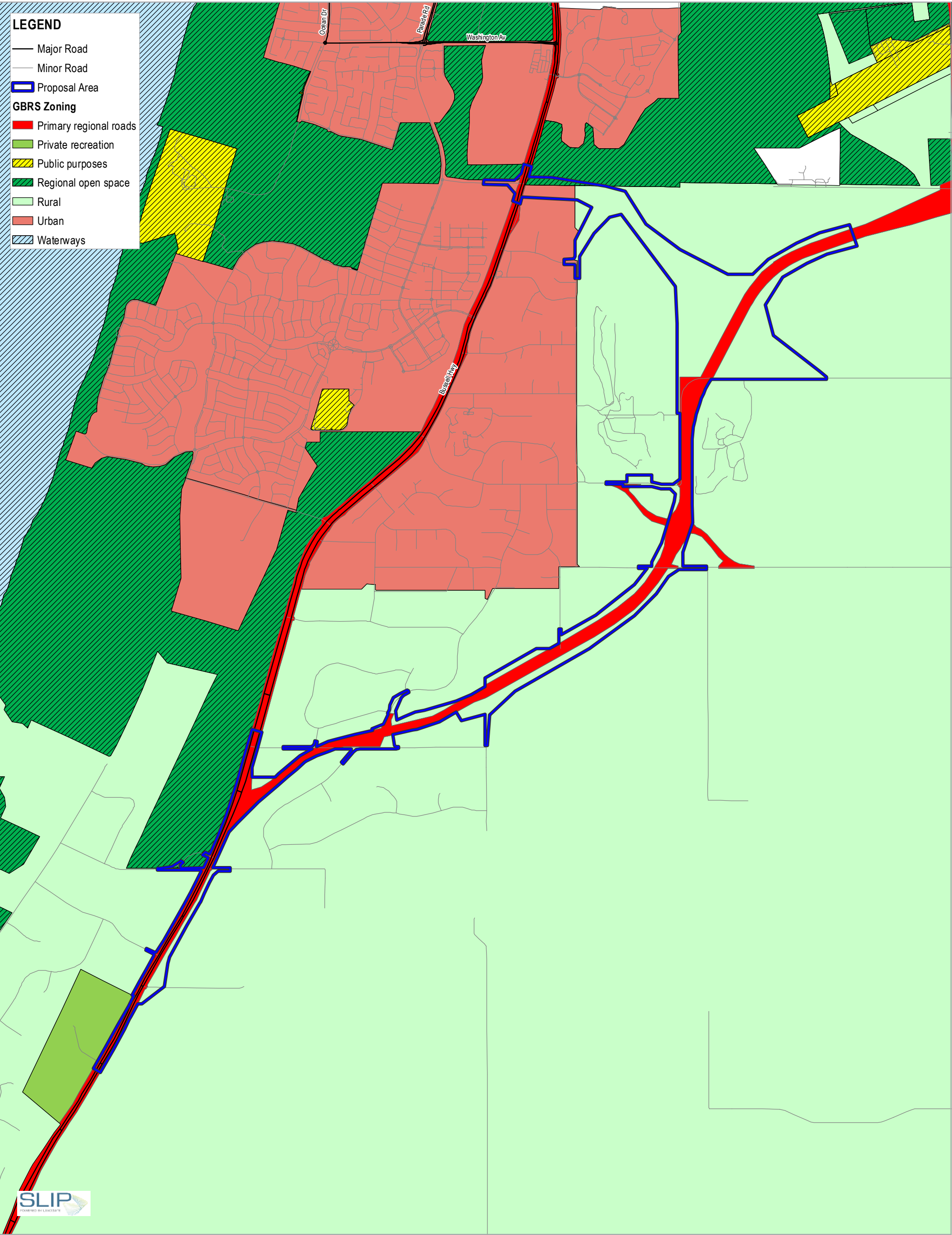


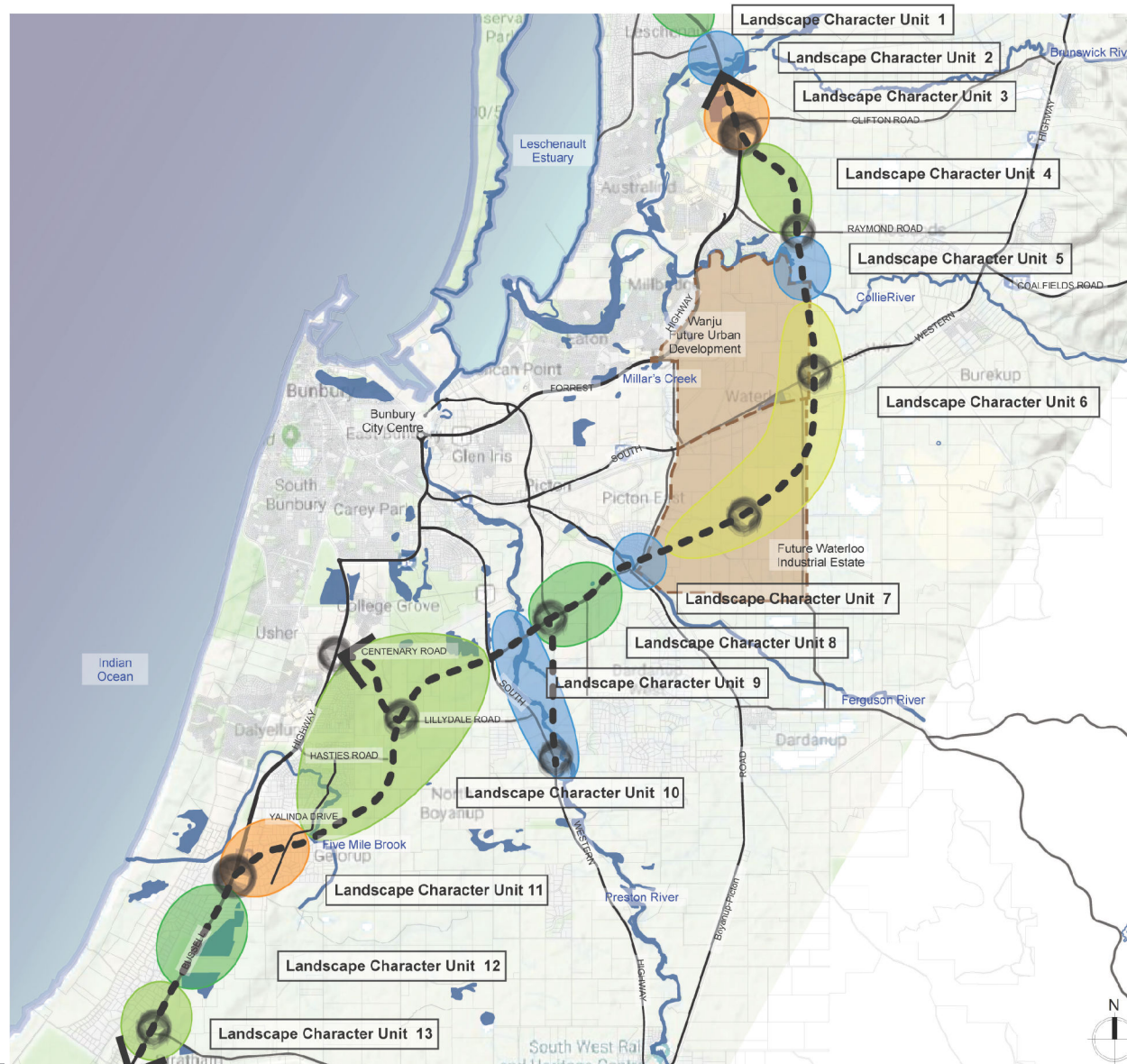
Main Roads Western Australia
Southern Section
Environmental Referral Supporting Document

Project No. 61-37041
Revision No. 0
Date 16/07/2019

Aboriginal and European Heritage Sites
within 5 km of the Proposal Area

FIGURE 17





LANDSCAPE CHARACTER UNITS

The BORR corridor is long and traverses a range of natural and cultural landscapes. Each landscape has distinct characteristics and requires a specific landscape response. This section describes the landscape character units of the corridor. The BORR corridor can be divided into 13 landscape character unit areas. These are:

- Landscape Character Unit 1 - Forrest Highway (Northern approach)
- Landscape Character Unit 2 - Brunswick River and foreshore
- Landscape Character Unit 3 - Forrest Highway
- Landscape Character Unit 4 - Clifton Road to Collie River
- Landscape Character Unit 5 - Collie River and foreshore
- Landscape Character Unit 6 - Collie River to Fergusson River
- Landscape Character Unit 7 - Fergusson River and foreshore
- Landscape Character Unit 8 - Fergusson River to Preston River
- Landscape Character Unit 9 - Preston River and foreshore
- Landscape Character Unit 10 - Preston River to Five Mile Brook
- Landscape Character Unit 11 - Five Mile Brook to Bussell Highway
- Landscape Character Unit 12 - Bussell Highway - Woods Road to Capel Golf Course
- Landscape Character Unit 13 - Bussell Highway - Capel Golf Course South (Southern approach)

The following pages describe each of these character areas in detail.

Paper Size ISO A4














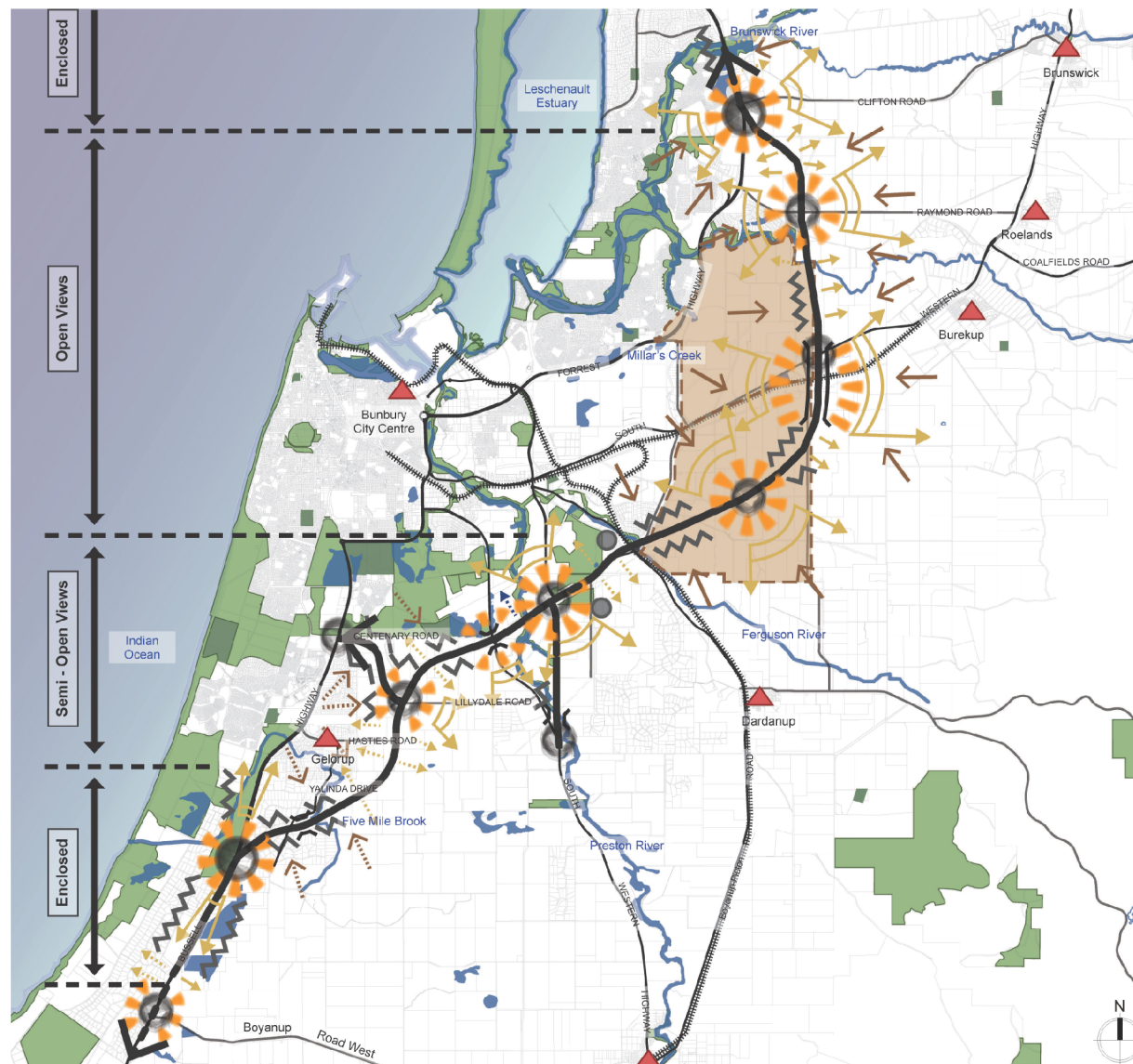
Main Roads Western Australia
Southern Section
Environmental Referral Supporting Document
Landscape Character Unit Mapping
(BORR IPT, 2018)

Project No. 61-37041
Revision No. 0
Date 22/08/2019

FIGURE 19

LEGEND

-  BORR Alignment
-  BORR Connections
-  Bridges / Retaining Walls
-  High Points
-  Long Views (Elevated)
-  Short Views
-  Filtered Views
-  Feature to be Screened
-  Future Development to be Screened
-  Open Views of Highway
-  Filtered Views of Highway



Paper Size ISO A4



Main Roads Western Australia
Southern Section
Environmental Referral Supporting Document

Visual Analysis Mapping
(BORR IPT, 2018)

Project No. 61-37041
Revision No. 0
Date 22/08/2019

FIGURE 20