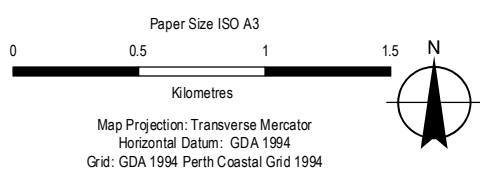
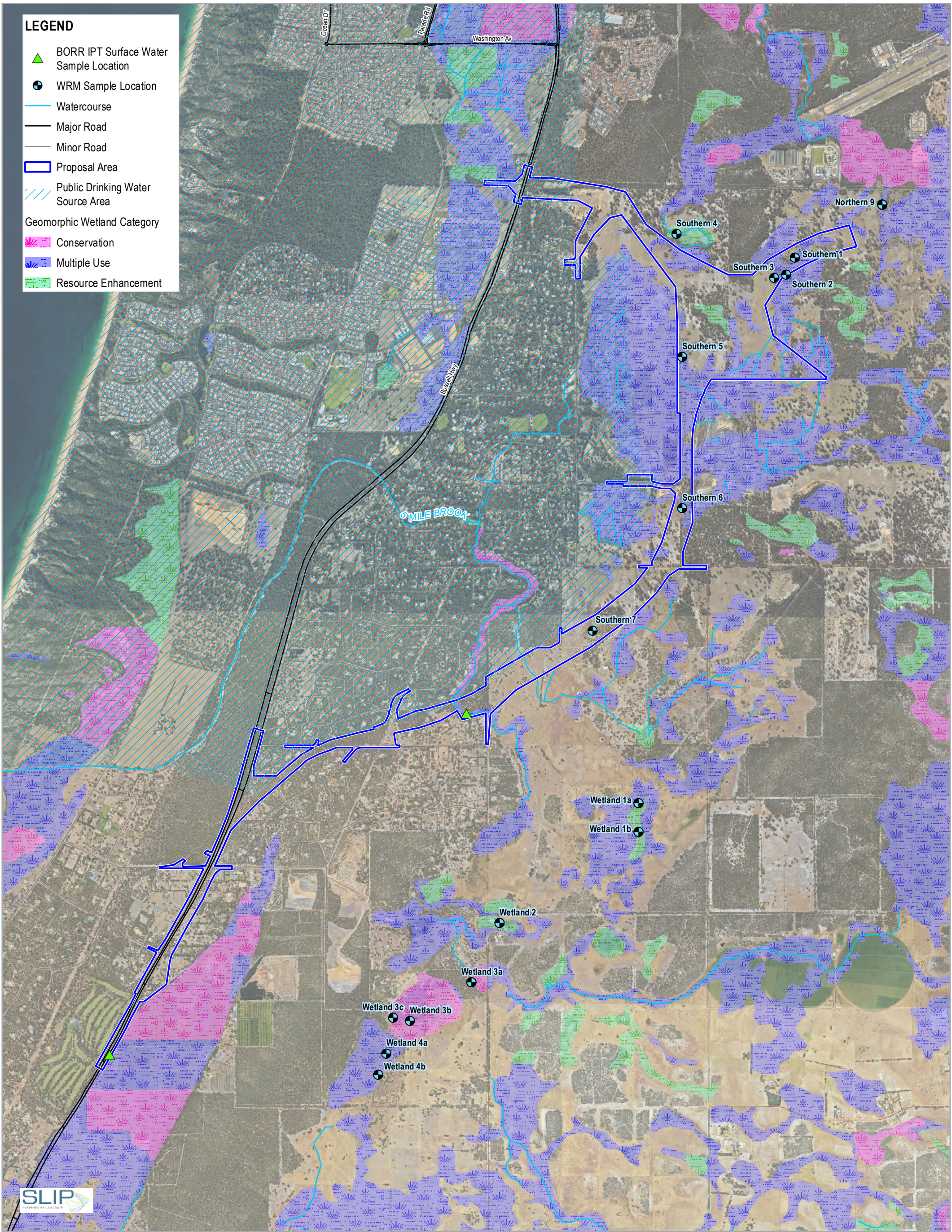


APPENDIX A

Figures (10-16)

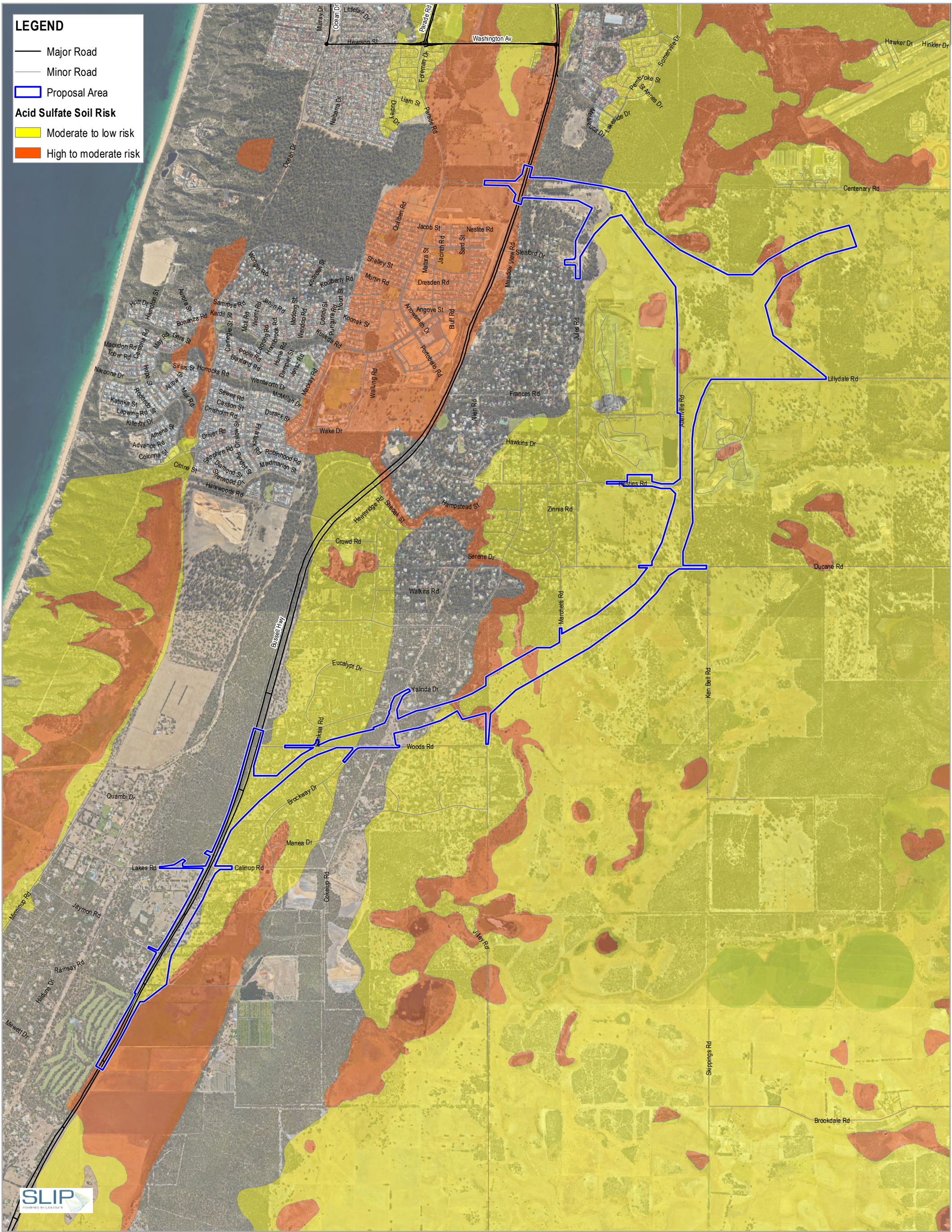
Figure 1	Proposal Area
Figure 2	Proposed Bridge Structures
Figure 3	Current Proposal Area and 2012 EP Act Referral Proposal Area
Figure 4	Surveyed and Unsurveyed areas
Figure 5	Vegetation Types
Figure 6	Vegetation Condition
Figure 7	Threatened and Priority Ecological Communities and Flora
Figure 8	Fauna Habitat Types and South West Ecological Linkages
Figure 9	Threatened Fauna Observations within the Proposal Area & Contextual Sites
Figure 10	Hydrology and Surface Water Sample Locations
Figure 11	Acid Sulfate Soil Risk Mapping
Figure 12	Groundwater Test Locations
Figure 13	Bunbury annual rainfall recorded at BoM stations 9514 (1877-1985); 9885 (1985-1995); 9965 (1995-2018)
Figure 14	Temperature recorded at Bunbury BoM station for years 1995 to 2018
Figure 15	Rainfall recorded at Bunbury BoM station for years 1995 to 2018
Figure 16	Relative humidity recorded at Bunbury BoM station for years 1995 to 2018
Figure 17	Aboriginal and European Heritage Sites within 5 km of the Proposal Area
Figure 18	Existing Land Use
Figure 19	Landscape Character Unit Mapping (BORR IPT, 2018)
Figure 20	Visual analysis Mapping (BORR IPT, 2018)



Main Roads Western Australia
Southern Section
Environmental Referral Supporting Document
Hydrology and Surface Water
Sample Locations

Project No. 61-37041
Revision No. 0
Date 16/07/2019

FIGURE 10



LEGEND

— Major Road
— Minor Road
□ Proposal Area

Acid Sulfate Soil Risk

■ Moderate to low risk
■ High to moderate risk

Paper Size ISO A3

0 0.5 1 1.5

Kilometres

Map Projection: Transverse Mercator
Horizontal Datum: GDA 1994
Grid: GDA 1994 Perth Coastal Grid 1994

N

 **BORR Team**

 Australian Government
BUILDING OUR FUTURE

 **mainroads**
WESTERN AUSTRALIA

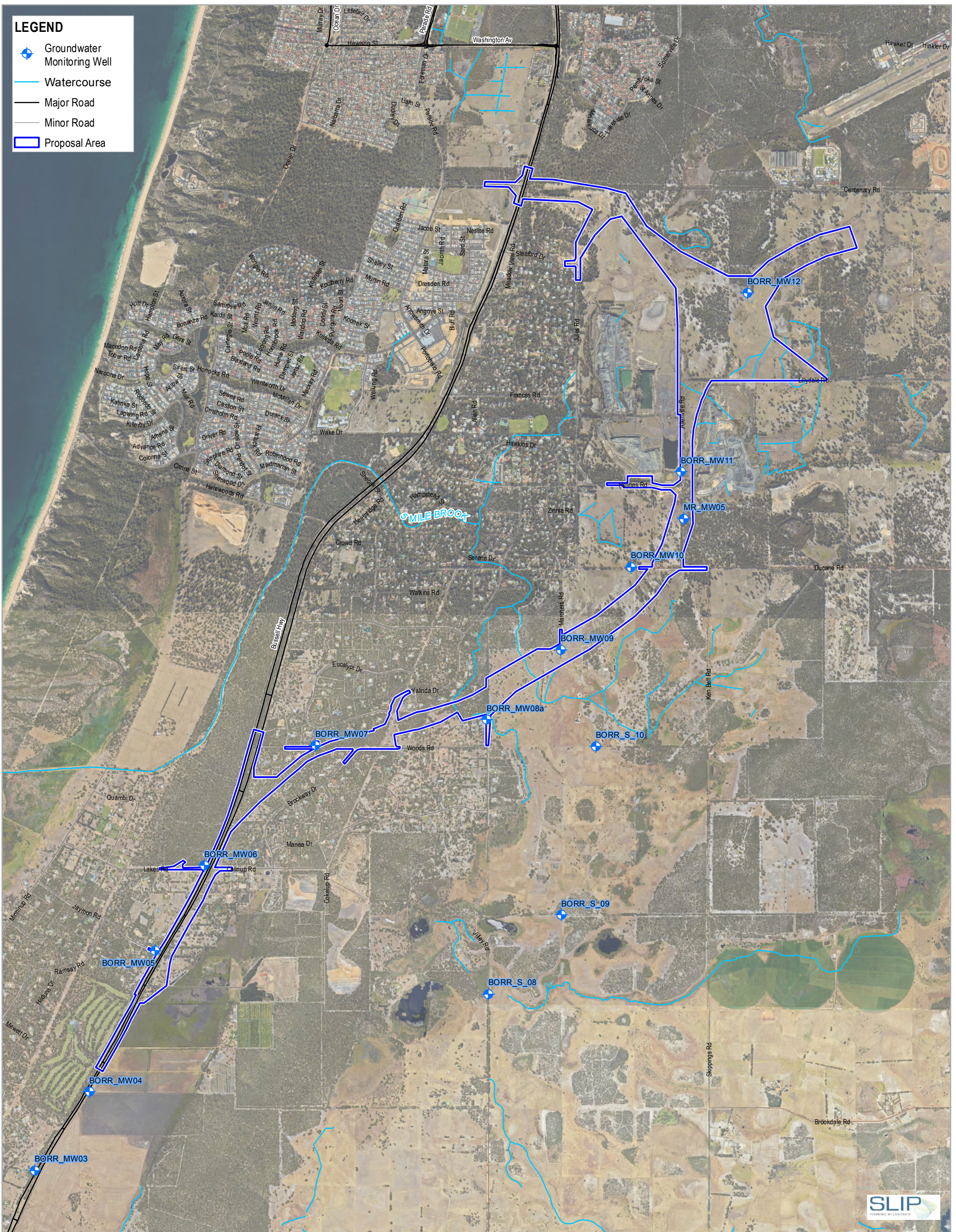
BUNBURY OUTER RING ROAD | PLANNING AND DEVELOPMENT

Main Roads Western Australia
Southern Section
Environmental Referral Supporting Document

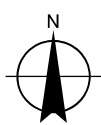
**Acid Sulfate Soils Risk Mapping
(GoWA, 2018c)**

Project No. 61-37041
Revision No. 0
Date 16/07/2019

FIGURE 11



Paper Size ISO A3
0 0.5 1
Kilometres
Map Projection: Transverse Mercator
Horizontal Datum: GDA 1994
Grid: GDA 1994 Perth Coastal Grid 1994



Main Roads Western Australia
Southern Section
Environmental Referral Supporting Document

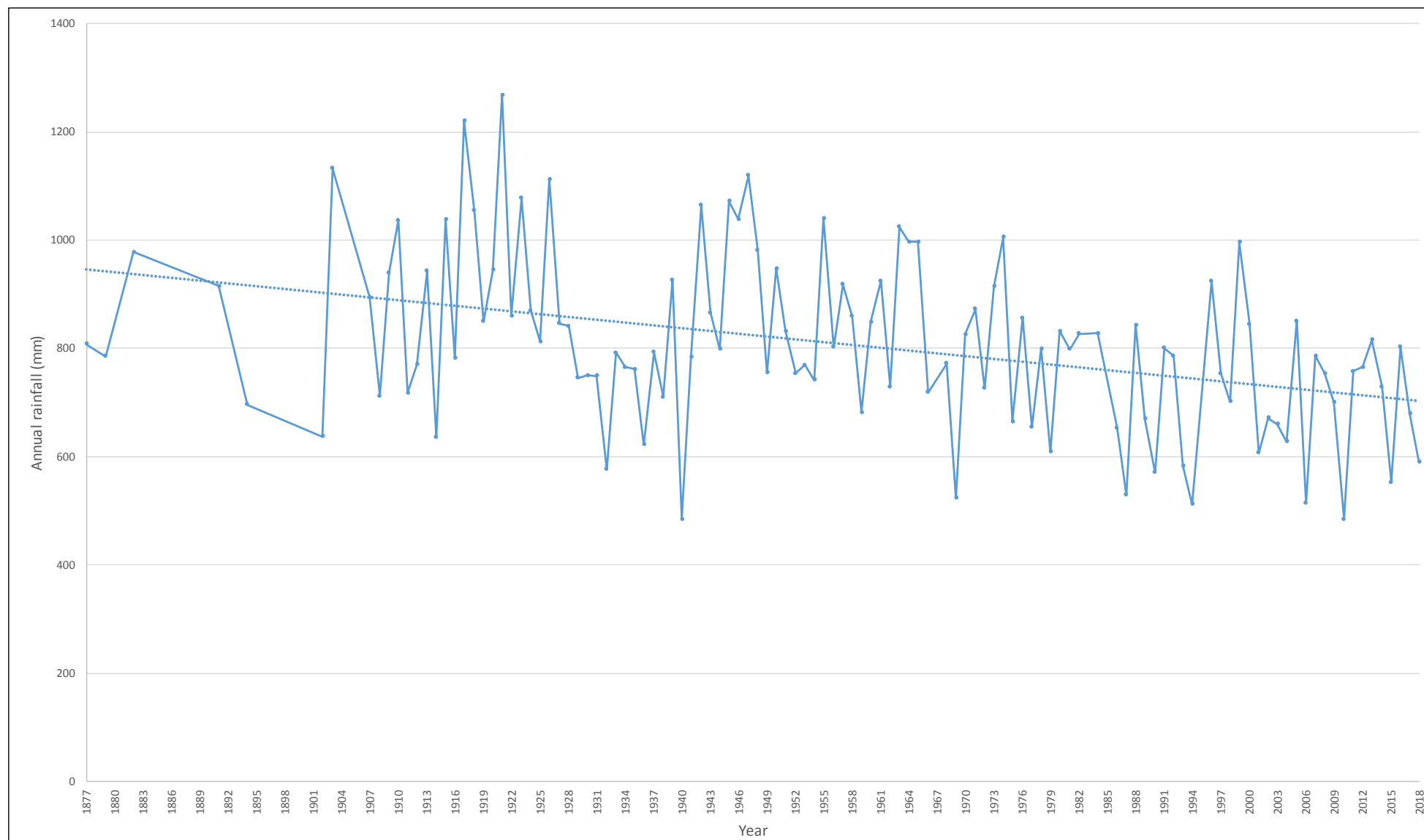
Groundwater and Soil Test Locations
(BORR IPT, 2019a)

Project No. 61-37041
Revision No. 0
Date 16/07/2019

FIGURE 12

G:\6137041\19_0_GIS\Maps\Working\BORR South Environmental Referral Supporting Document\6137041_012_GWTesting_Rev0.mxd
Print date: 13 Aug 2019 - 17:01

Data source: BORR JV. Groundwater monitoring wells - 2019, Surface water monitoring locations - 20190321, Proposal Area - 20190705, Landgate: Roads, Rivers - 2018, Aerial photography - WA Now accessed 20190716. Created by: mmikonen



Paper Size ISO A4

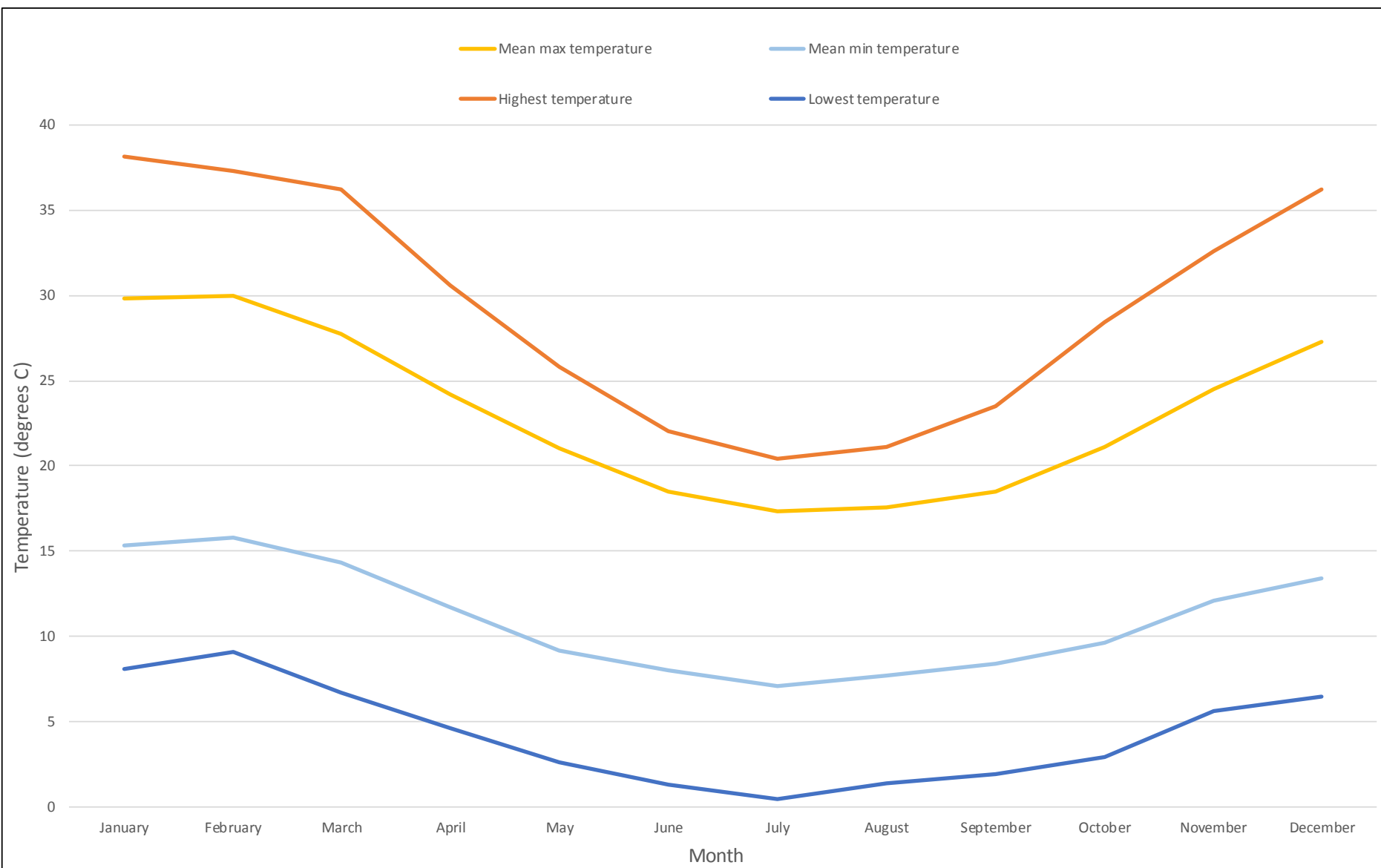


**Main Roads Western Australia
Southern Section
Environmental Referral Supporting Document**

**Bunbury annual rainfall recorded at
BoM stations 9514 (1877-1985);
9885 (1985-1995); 9965 (1995-2016)**

Project No. **61-37041**
Revision No. **0**
Date **22/08/2019**

FIGURE 13



Paper Size ISO A4

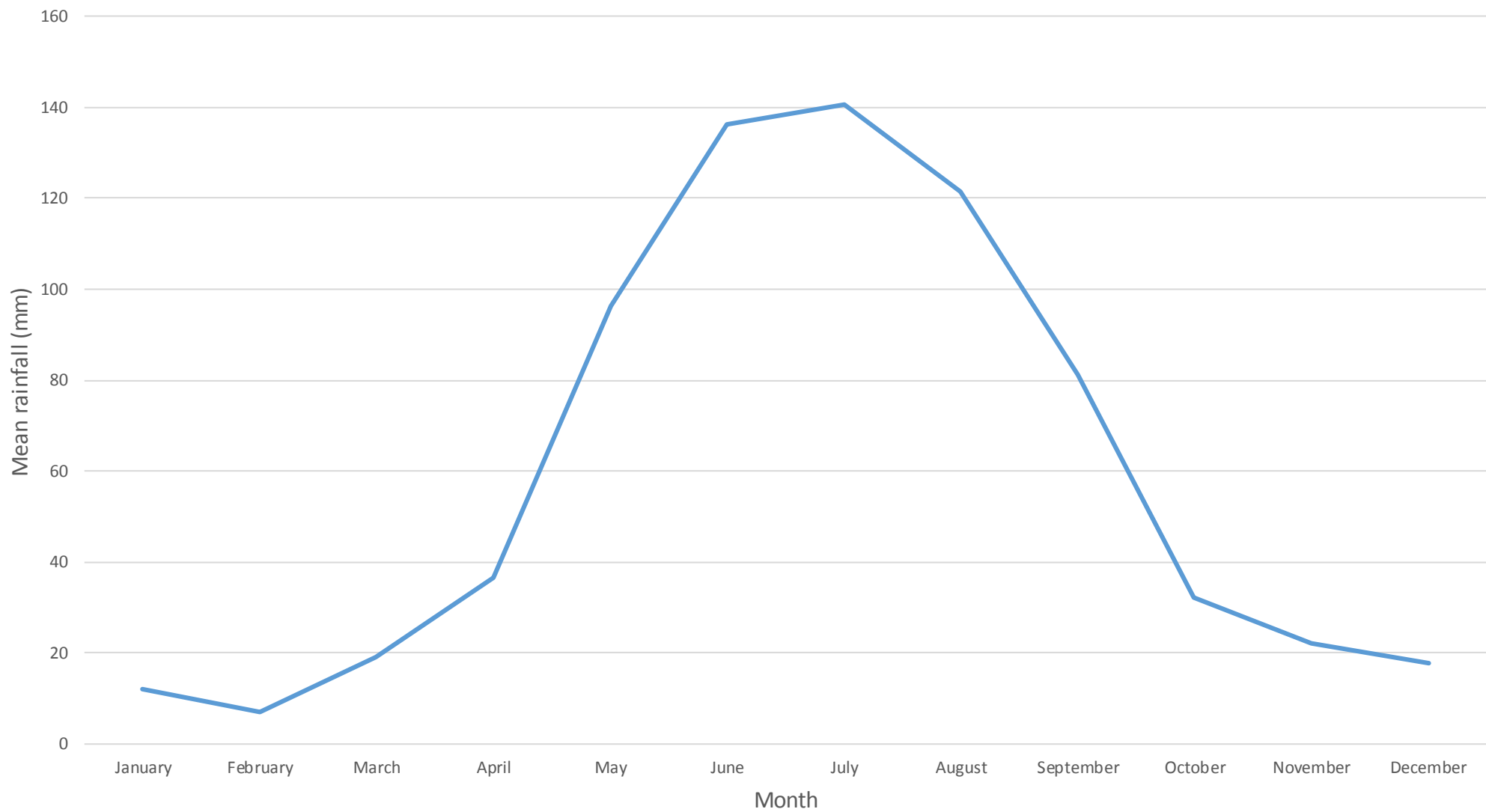


**Main Roads Western Australia
Southern Section
Environmental Referral Supporting Document**

**Temperature recorded at Bunbury BoM
station for years 1995 to 2018**

Project No. **61-37041**
Revision No. **0**
Date **14/08/2019**

FIGURE 14



Paper Size ISO A4

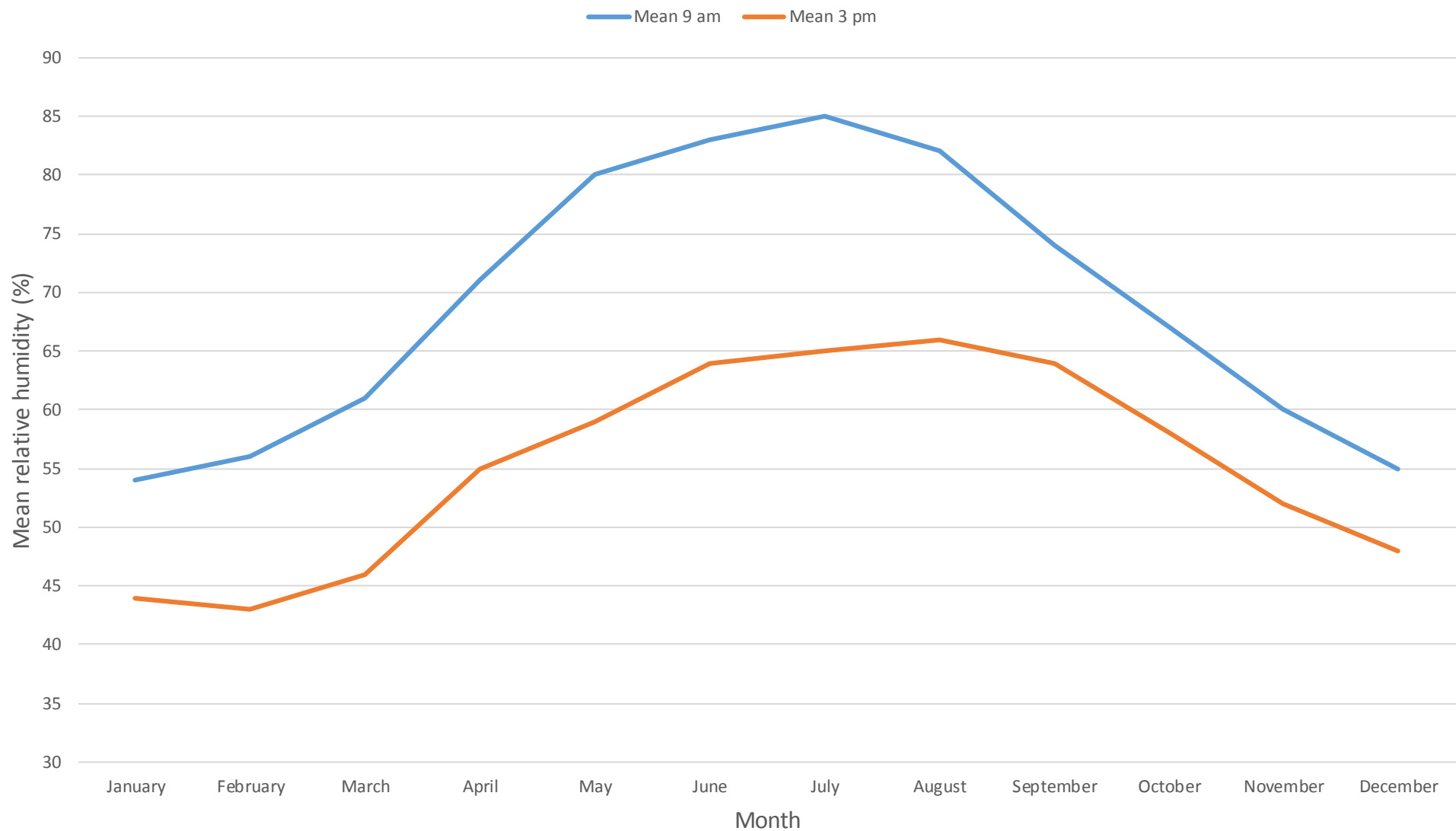


**Main Roads Western Australia
Southern Section
Environmental Referral Supporting Document**

**Rainfall recorded at Bunbury BoM station
for years 1995 to 2018**

Project No. **61-37041**
Revision No. **0**
Date **14/08/2019**

FIGURE 15



Paper Size ISO A4



**Main Roads Western Australia
Southern Section
Environmental Referral Supporting Document**

**Relative humidity recorded at Bunbury
BoM station for years 1995 to 2018**

Project No. **61-37041**
Revision No. **0**
Date **14/08/2019**

FIGURE 16