

Figure 9-1: Vegetation Types

N

Scale 1:12,500 at A3

0 100 200 m

Coordinate System: GDA 1994 MGA Zone 50

Date: 18/03/2019

Legend

Development Area Footprint

Major Road

Minor Road

Track

Vegetation Type

BaEpDf

BsMOS

BsMs

CcMOF

Cleared

EgBaXp

EgHhAb

EgMOF

EmHIMp

MhMS

Paddock

Planted

Q:\Consult\2018\WCO\WCO18379\01_GIS_documents\ArcMap_documents\WCO18379_G025_RevC.mxd

© 2018. Whilst every care has been taken to prepare this map, Strategen makes no representations or warranties about its accuracy, reliability, completeness or suitability for any particular purpose and cannot accept liability and responsibility of any kind (whether in contract, tort or otherwise) for any expenses, losses, damages and/or costs (including indirect or consequential damage) which are or may be incurred by any party as a result of the map being inaccurate, incomplete or unsuitable in any way and for any reason.

Data source: Service Layer Credits: Source: Esri, DigitalGlobe, GeoEye, Earthstar Geographics, CNES/Airbus DS, USDA, USGS, AeroGRID, IGN, and the GIS User Community. Client: Water Corporation Project area, 07/2018. Created by: c.thatcher

WATER CORPORATION

strategen ENVIRONMENTAL

info@strategen.com.au | www.strategen.com.au



Figure 9-1: Vegetation Types

N

Scale 1:10,500 at A3

0 100 m

Coordinate System: GDA 1994 MGA Zone 50

Date: 18/03/2019

Legend

Development Area Footprint

Minor Road

Track

Vegetation Type

BaSIAn

BsMs

Cleared

EmGtPo

EmHIMp

ErAcEc

Paddock

Q:\Consult\2018\WCO\WCO18379\01_GIS_documents\ArcMap_documents\WCO18379_G025_RevC.mxd

© 2018. Whilst every care has been taken to prepare this map, Strategen makes no representations or warranties about its accuracy, reliability, completeness or suitability for any particular purpose and cannot accept liability and responsibility of any kind (whether in contract, tort or otherwise) for any expenses, losses, damages and/or costs (including indirect or consequential damage) which are or may be incurred by any party as a result of the map being inaccurate, incomplete or unsuitable in any way and for any reason.

Data source: Service Layer Credits: Source: Esri, DigitalGlobe, GeoEye, Earthstar Geographics, CNES/Airbus DS, USDA, USGS, AeroGRID, IGN, and the GIS User Community. Client: Water Corporation Project area, 07/2018. Created by: c.thatcher

info@strategen.com.au | www.strategen.com.au



Figure 9-1: Vegetation Types

Scale 1:19,000 at A3

0 100 200 300 m

Coordinate System: GDA 1994 MGA Zone 50

Date: 18/03/2019

Legend

- Development Area Footprint
- Minor Road
- Track

Vegetation Type

- AfHhMp
- BaSIAn
- BaSIAn No Access
- BaXpAc No Access
- BsMs
- Cleared
- EmGtPo
- ErAcEc
- Paddock
- Planted

Q:\Consult\2018\WCO\WCO18379\01_GIS_documents\ArcMap_documents\WCO18379_G025_RevC.mxd

© 2018. Whilst every care has been taken to prepare this map, Strategen makes no representations or warranties about its accuracy, reliability, completeness or suitability for any particular purpose and cannot accept liability and responsibility of any kind (whether in contract, tort or otherwise) for any expenses, losses, damages and/or costs (including indirect or consequential damage) which are or may be incurred by any party as a result of the map being inaccurate, incomplete or unsuitable in any way and for any reason.

Data source: Service Layer Credits: Source: Esri, DigitalGlobe, GeoEye, Earthstar Geographics, CNES/Airbus DS, USDA, USGS, AeroGRID, IGN, and the GIS User Community. Client: Water Corporation Project area, 07/2018. Created by: c.thatcher

info@strategen.com.au | www.strategen.com.au

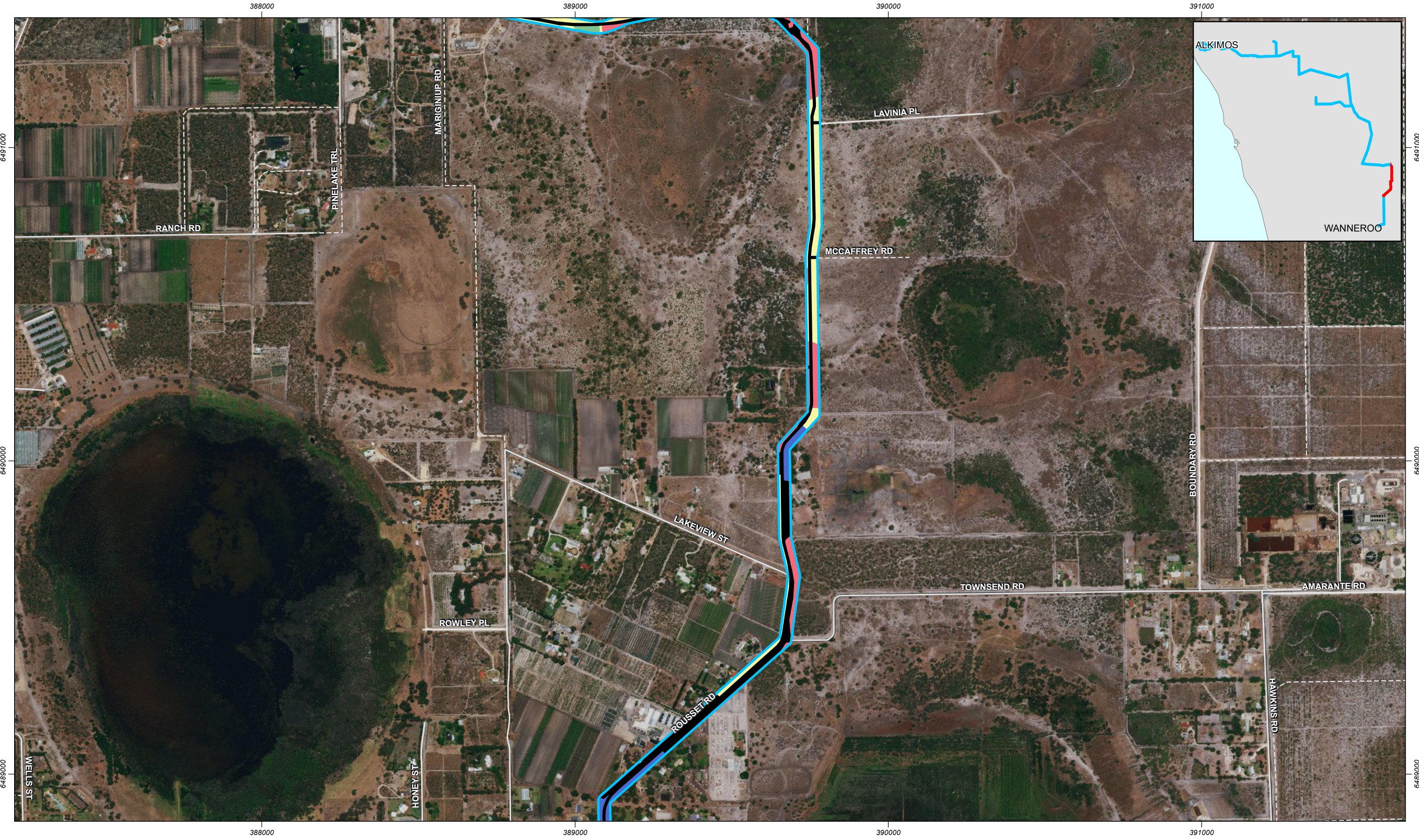


Figure 9-1: Vegetation Types

Scale 1:11,000 at A3

0 100 200 m

Coordinate System: GDA 1994 MGA Zone 50

Date: 18/03/2019

Legend

- Development Area Footprint
- Minor Road
- Track

Vegetation Type

- Cleared
- EmXpDb
- MpHaEc

- Paddock
- Planted

Q:\Consult\2018\WCO\WCO18379\01_GIS_documents\ArcMap_documents\WCO18379_G025_RevC.mxd

© 2018. Whilst every care has been taken to prepare this map, Strategen makes no representations or warranties about its accuracy, reliability, completeness or suitability for any particular purpose and cannot accept liability and responsibility of any kind (whether in contract, tort or otherwise) for any expenses, losses, damages and/or costs (including indirect or consequential damage) which are or may be incurred by any party as a result of the map being inaccurate, incomplete or unsuitable in any way and for any reason.

Data source: Service Layer Credits: Source: Esri, DigitalGlobe, GeoEye, Earthstar Geographics, CNES/Airbus DS, USDA, USGS, AeroGRID, IGN, and the GIS User Community. Client: Water Corporation Project area, 07/2018. Created by: c.thatcher

info@strategen.com.au | www.strategen.com.au